

DRAWING NO.	MODEL
187618-01	R42QD,R42QL,R42GD
187618-02	R42HD,R42HL

RELEASE	REV/DATE	DWG NO	187618
REV ZONE	REVISION RECORD	DATE	DTR-ORIG

	R-SERIES	ITEM
CABLE ASM (YEL) FROM COACH BATTERY FUSE TO STUD-JUMP START,RED	175207-52-076	1
CABLE ASM (YEL) FROM STUD-JUMP START,RED TO COACH SIDE OF AUX START SOLENOID	175207-52-004	2
CABLE ASM (ORG) FROM COACH BATTERY TO INVERTER FUSE	175207-66-005	3
CABLE ASM (BLK) FROM STUD-JUMP START,BLK TO FRAME RAIL GROUND	175211-01-006	4
CABLE ASM (ORG) FROM INVERTER FUSE TO INVERTER DISCONNECT	175207-67-024	5
CABLE ASM (ORG) FROM INVERTER DISCONNECT TO INVERTER	175207-65-004	17
CABLE ASM (BLK) FROM BATTERY TO INVERTER	175211-01-027	6
CABLE ASM (BLK) FROM COACH BATTERY TO FRAME RAIL GROUND	175211-02-081	7
CABLE ASM (PUR) FROM DISCONNECT SOLENOID TO ISOLATED STUD	175207-15-004	8
CABLE ASM (RED) FROM BATTERY SIDE OF DISCONNECT SOLENOID TO CHASSIS BATTERY FUSE	175207-35-007	9
CABLE ASM (BLU) FROM CHASSIS DISCONNECTED POWER FUSE TO LEVELING SYSTEM POWER	141416-26-115	10
CABLE ASM (BLK) FROM LEVELING SYSTEM TO FRAME RAIL GROUND	133567-11-004	1
CABLE ASM (GRN) FROM BAT DISC RELAY TO PASS THRU STUD	175207-42-138	11
CABLE ASM (GRN) FROM PASS THRU STUD TO GENERATOR	175207-42-031	2
CABLE ASM (BLK) FROM GENERATOR TO FRAME RAIL GROUND	175211-02-022	2
CABLE ASM (YEL) JUMPER BETWEEN POSITIVE POSTS ON COACH BATTERY	141417-52-004	12
	141417-51-002 (4)	13
CABLE ASM (BLK) JUMPER BETWEEN NEGATIVE POSTS ON COACH BATTERY	133568-12-004	14
	133568-11-002 (4)	15
CABLE ASM (RED) JUMPER BETWEEN POSITIVE POSTS IN LEFT FRONT COMPT	141417-32-002	3
CABLE ASM-TEMPERATURE,BATTERY	175385-03-000	16
CABLE ASM-COACH BATTERY FUSE (YEL)	175207-52-007	18
CABLE ASM-CHASSIS BATTERY FUSE (RED)	175207-35-005	19
CABLE ASM (FROM COACH DISCONNECT TO MULTIPLEX PANEL)	TAB 01: 189044-01-060 TAB 02: 189044-01-040	

- 265 CODES/STANDARDS-CSA/CMVSS
- 1B1 CODES/STANDARDS USA
- 1B1 265

WINNEBAGO COPYRIGHT 2014 WINNEBAGO INDUSTRIES, INC.

ALL DIMENSIONS ARE IN MILLIMETERS

15 R-SERIES

UNSPECIFIED TOLERANCES ARE:
 WHOLE DIM (X) : 3
 ONE-PLACE (X.X) : 1.5
 TWO-PLACE (X.XX) : 0.50
 ANGLE : 1°

THIRD ANGLE PROJECTION

DO NOT SCALE DRAWING REFER TO ES0018 FOR FASTENER TIGHTENING GUIDELINES

TITLE: **BATTERY INSTL**

SHEET 1 OF 4 PART NO **187618** REV

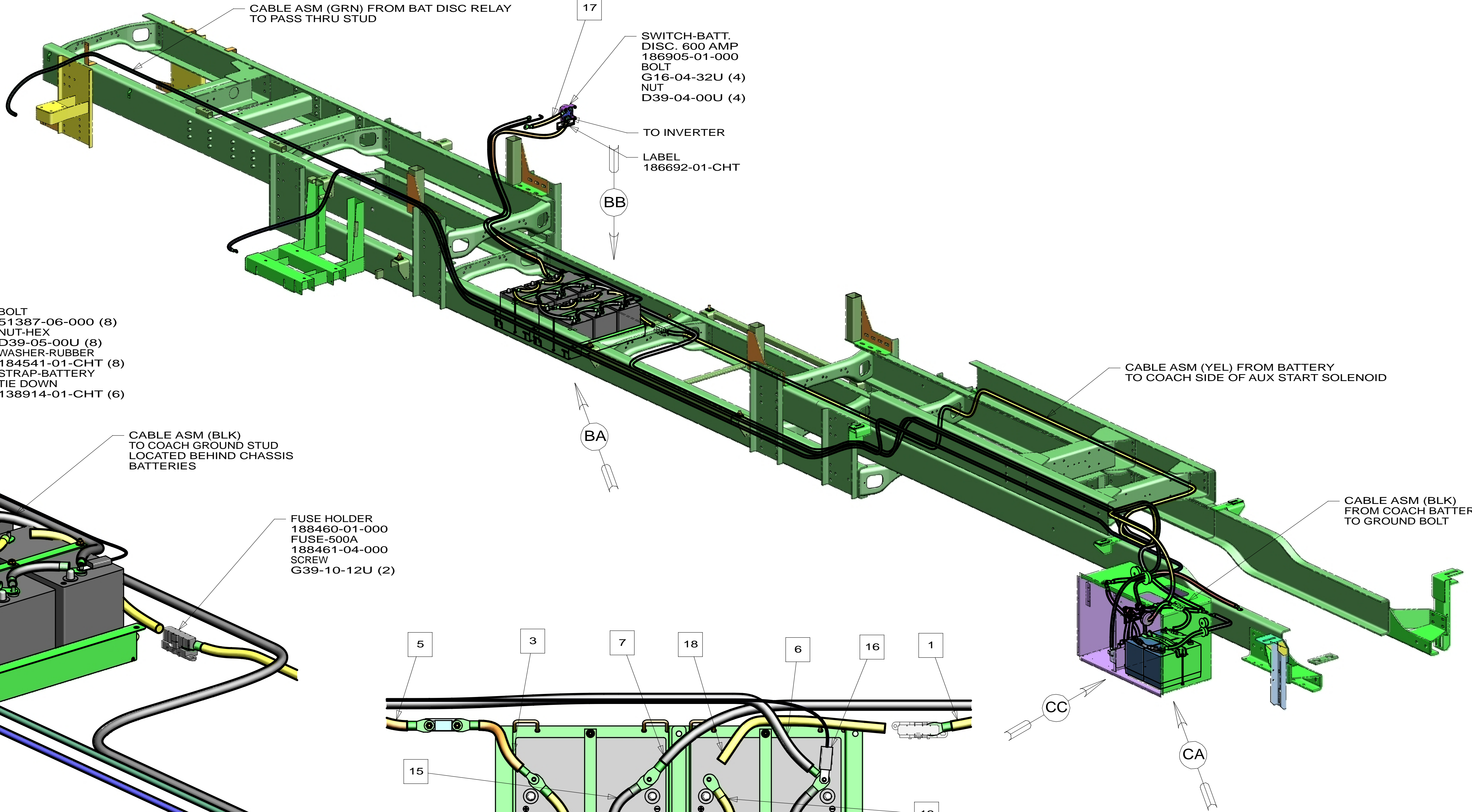
REF: 1 18-Aug-2014

- NOTES:
- 3 SEE WIRING INSTL-FRONT END FOR ADDITIONAL INFORMATION.
 - 2 SEE WIRING INSTL-CHASSIS FOR ADDITIONAL INFORMATION.
 - 1 SEE LEVELING SYSTEM INSTL FOR ADDITIONAL INFORMATION.

FOR ELECTRICAL TORQUE SPECIFICATIONS SEE DWG NO. 128783-01-000

FOR ELECTRICAL CALLOUTS SEE DWG NO. 121339-01-000

* 187618 * A



HOLDER-FUSE
115187-02-000
FUSE-400 AMP
115187-05-000
SCREW
G39-10-16B (2)

BATTERY-12V
174923-01-000 (6)

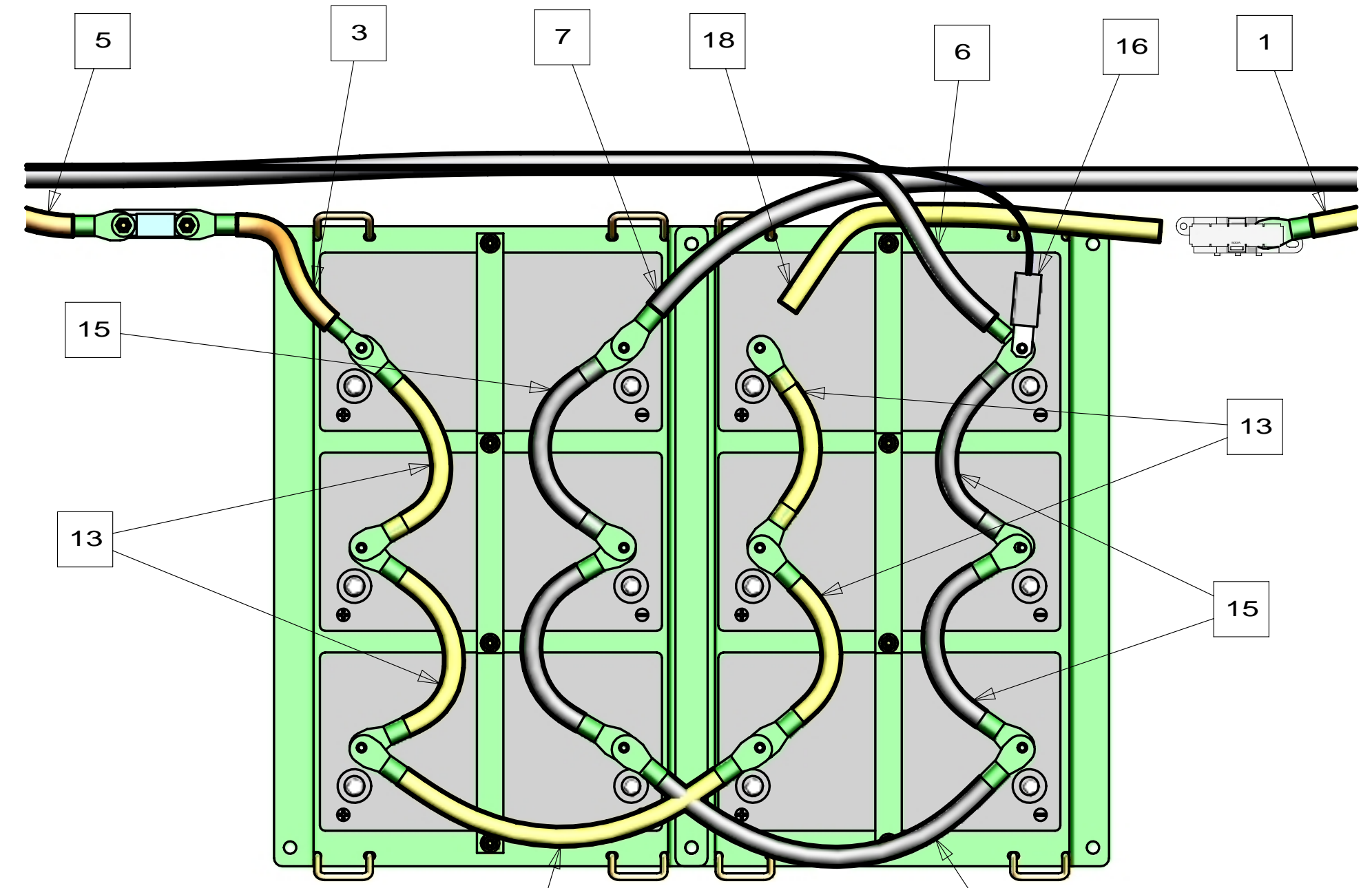
BOLT
51387-06-000 (8)
NUT-HEX
D39-05-00U (8)
WASHER-RUBBER
184541-01-CHT (8)
STRAP-BATTERY
TIE DOWN
138914-01-CHT (6)

CABLE ASM (BLK)
TO COACH GROUND STUD
LOCATED BEHIND CHASSIS
BATTERIES

FUSE HOLDER
188460-01-000
FUSE-500A
188461-04-000
SCREW
G39-10-12U (2)

TRAY ASM-BATTERY
176166-01-CHT (2)
NUT-HEX
D39-06-00B (6)

VIEW BA



VIEW BB

FOR ELECTRICAL
TORQUE
SPECIFICATIONS
SEE DWG NO.
128783-01-000

X-X
FOR
ELECTRICAL
CALLOUTS
SEE DWG NO.
121339-01-000

265 CODES/STANDARDS-CSA/CMVSS
1B1 CODES/STANDARDS USA

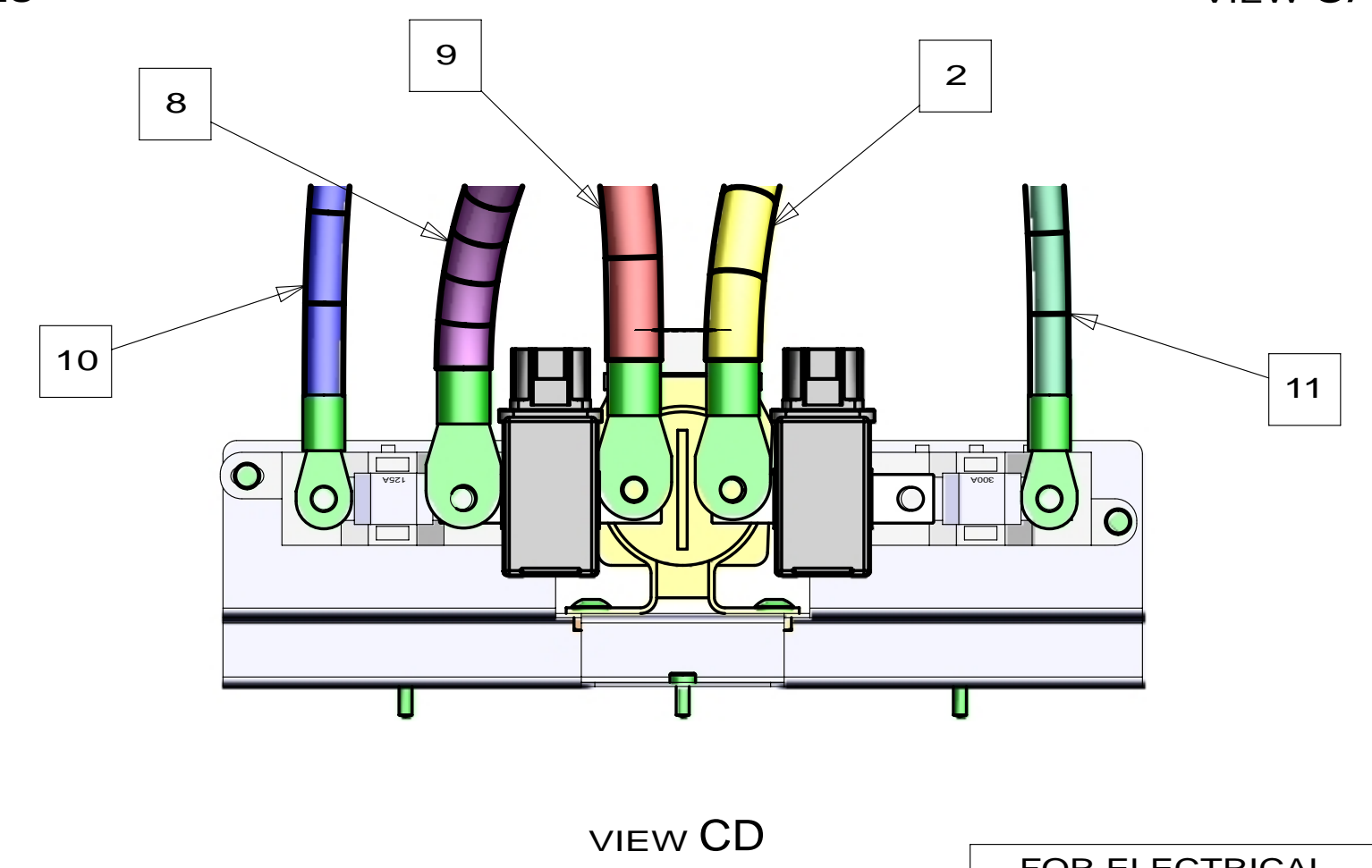
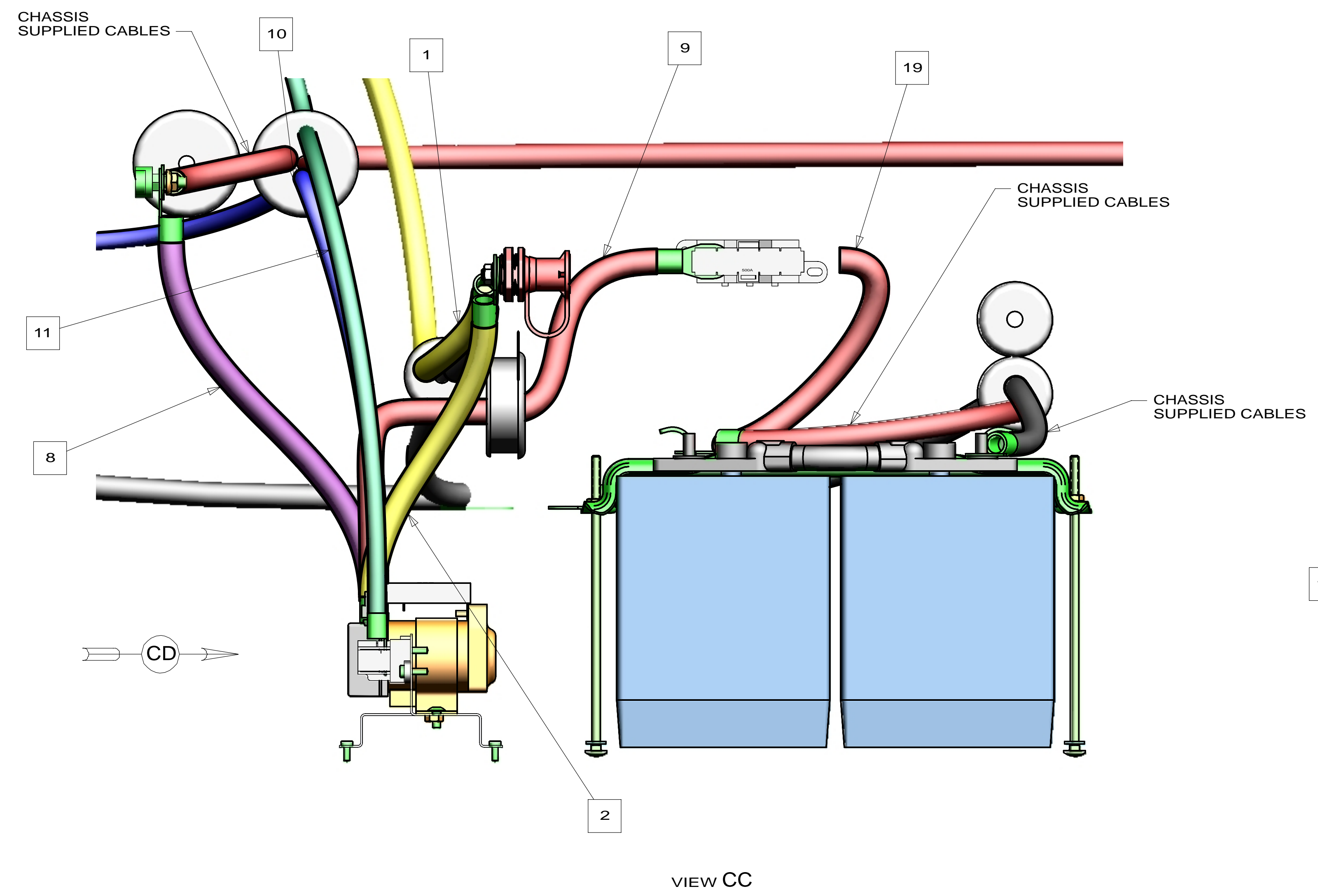
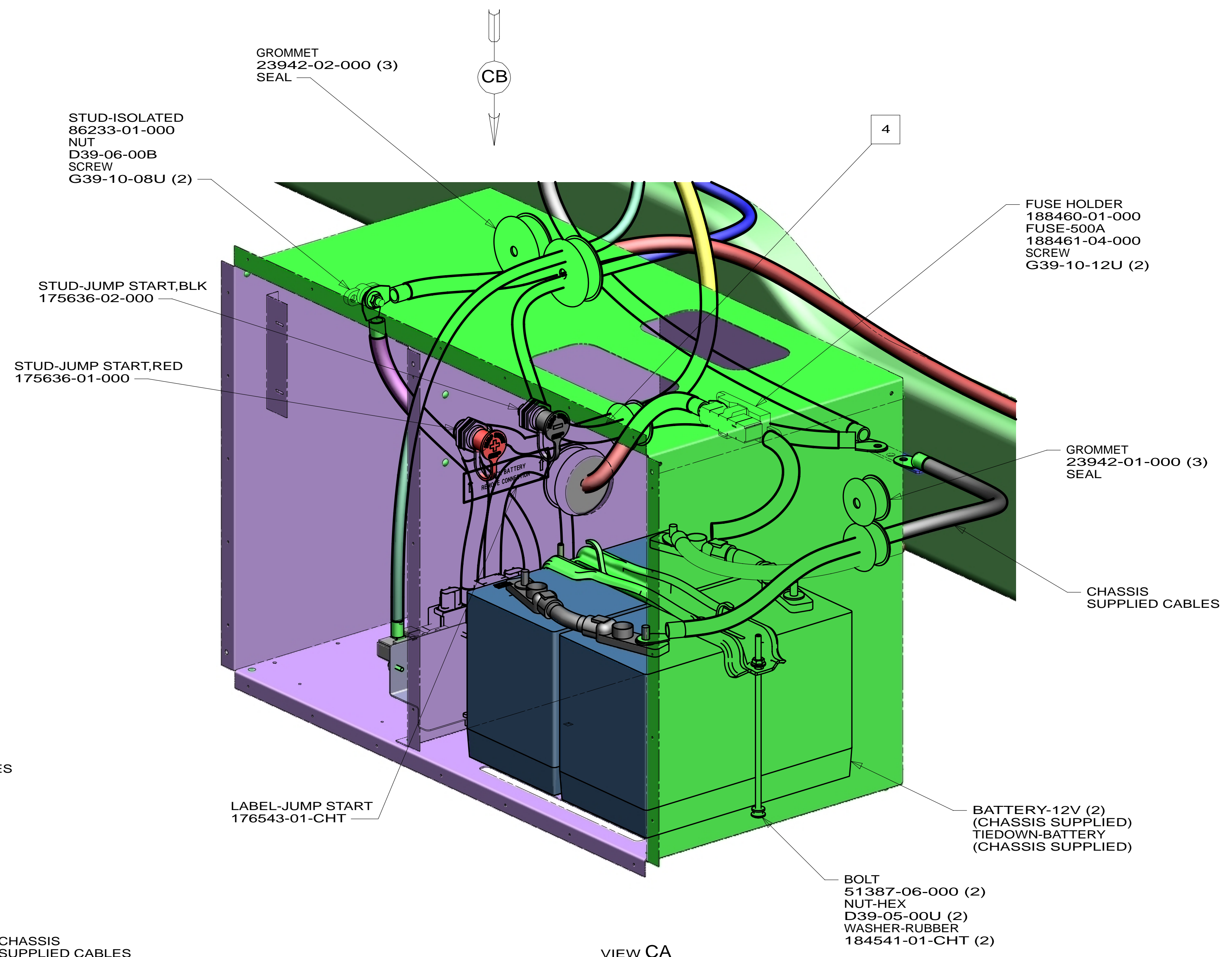
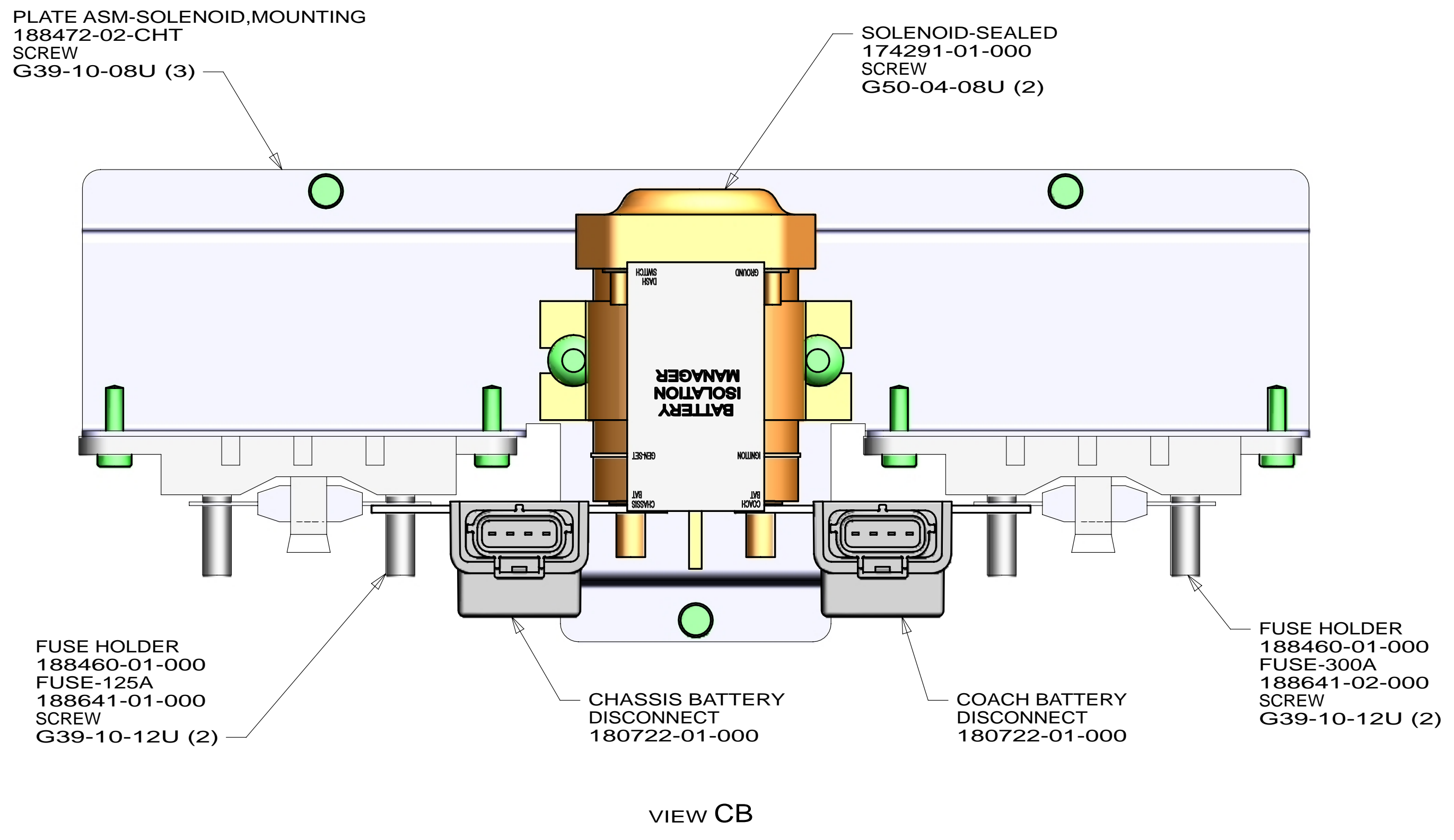
1B1 265

FIRST USED
15 R-SERIES

DO NOT SCALE DRAWING

TITLE:
BATTERY INSTL

SHEET 2 PART NO **187618** REV

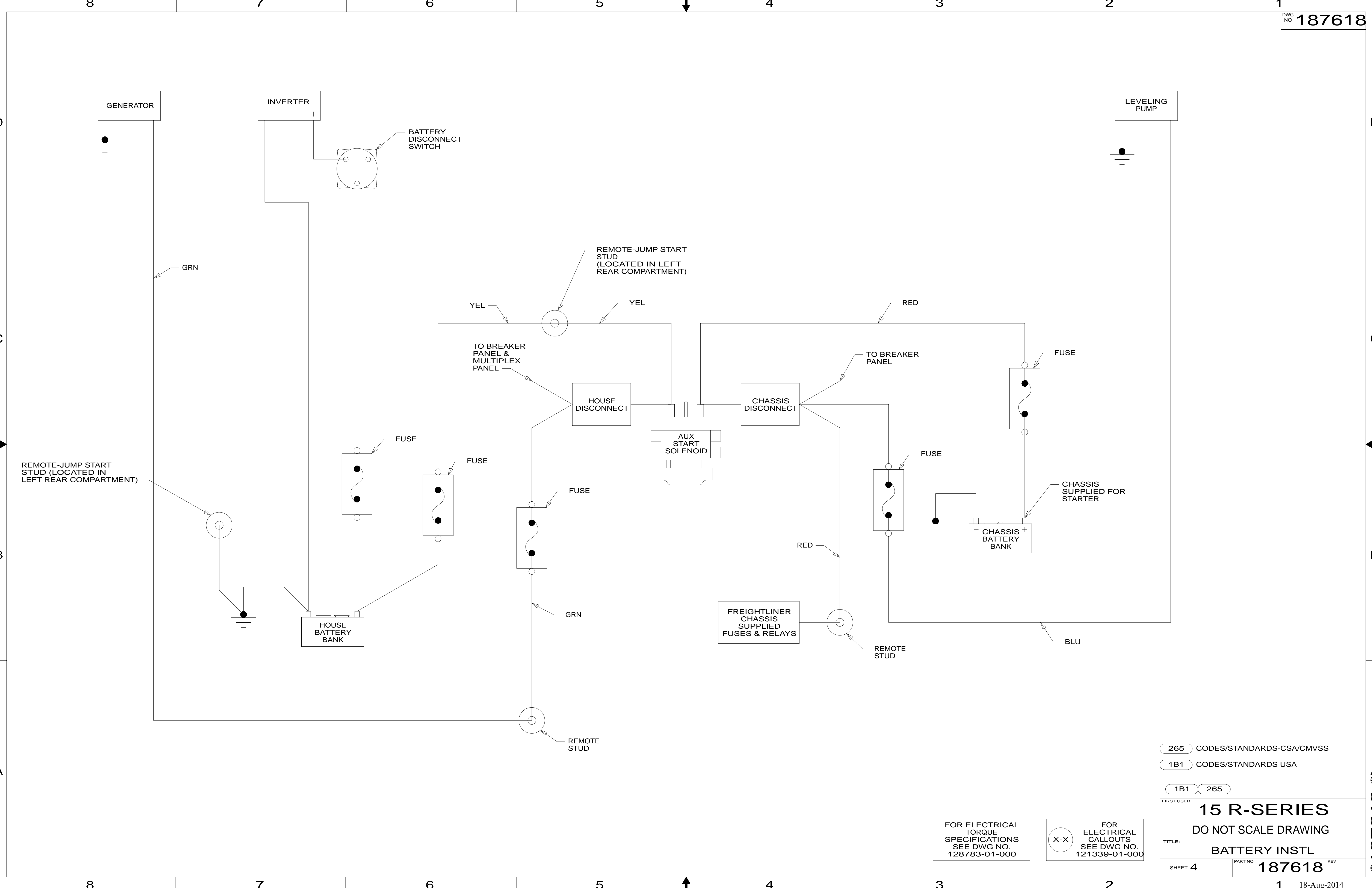


FOR ELECTRICAL TORQUE SPECIFICATIONS SEE DWG NO. 128783-01-000

FOR ELECTRICAL CALLOUTS SEE DWG NO. 121339-01-000

265 CODES/STANDARDS-CSA/CMVSS
1B1 CODES/STANDARDS USA
1B1 265

FIRST USED	15 R-SERIES	
TITLE:	DO NOT SCALE DRAWING	
	BATTERY INSTL	
SHEET 3	PART NO	187618
	REV	



265 CODES/STANDARDS-CSA/CMVSS
 1B1 CODES/STANDARDS USA

1B1 265

FIRST USED
15 R-SERIES

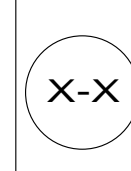
DO NOT SCALE DRAWING

TITLE:
BATTERY INSTL

SHEET 4 PART NO **187618** REV

FOR ELECTRICAL TORQUE SPECIFICATIONS SEE DWG NO. 128783-01-000

FOR ELECTRICAL CALLOUTS SEE DWG NO. 121339-01-000



* 187618 * A