

8 7 6 5 4 3 2 1

D

D

C

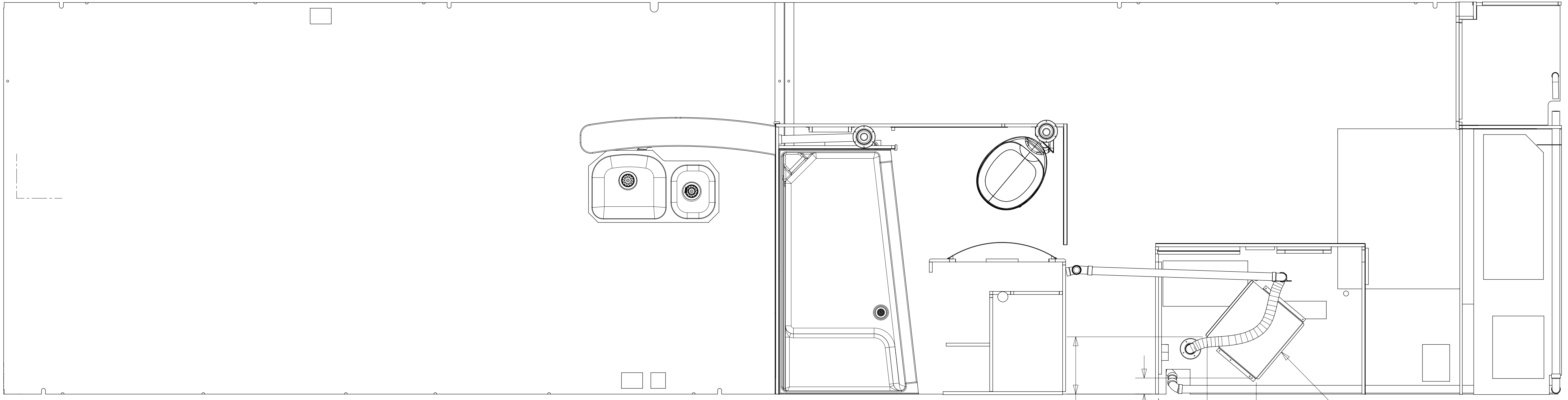
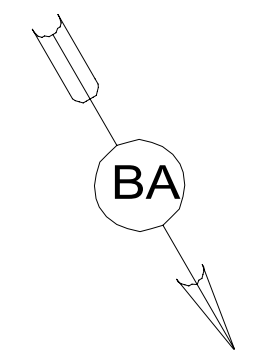
C

B

B

A

A



357 100 304 610
 PANEL-COVER 193514-01-CHT
 CA

- 12** CUT TO FIT.
- 11** ADD TEFLON TAPE 010405-01-000.
- 10** APPLY PRIMER 126427-02-000 AND CEMENT 126427-01-000 BETWEEN ELBOW AND FLEX PIPE.
9. SEE DRAWING 061607 FOR INSTALLATION OF GROMMETS.
8. SECURE DRAINAGE PIPES TO CABINET USING WIRE TIE 108046-02-000, AND SCREW 000G67-10-12U AT INTERVALS OF NOT MORE THAN 4 FEET APART.
- 7** SECURE VENT PIPE TO GROMMET WITH CLAMP 062401-02-000.
- 6** VENT PIPE MUST PROJECT 51 MIN AND 64 MAX ABOVE ROOF FOR PROPER FIT AND FUNCTION. ADD S-1 (116666-01-CHT SEAL-VENT PIPE) AROUND PIPE ON ROOF BEFORE VENT CAP IS INSTALLED.
5. SEAL AROUND SHOWER WITH SILICONE.
- 4** USE SMOOTH PLUMBERS PUTTY 167459-01-000 TO SEAL STRAINER (0.2 PER STRAINER).
3. ALL PIPE AND FITTINGS TO BE ASSEMBLED WITH SOLVENT 004020-01-000 (USA), 004020-02-000 (CAN)
2. SLOPE OF TRAP ARM MUST BE 6 PER 305 mm.
1. SLOPE OF HORIZONTAL PIPING TO BE MINIMUM OF 3 PER 305 mm.

- 265** CODES/STANDARDS-CSA/CMVSS
- 1B1** CODES/STANDARDS USA
- 21M** WASHER/DRYER PREP
- 21S** WASHER & DRYER-PAIR

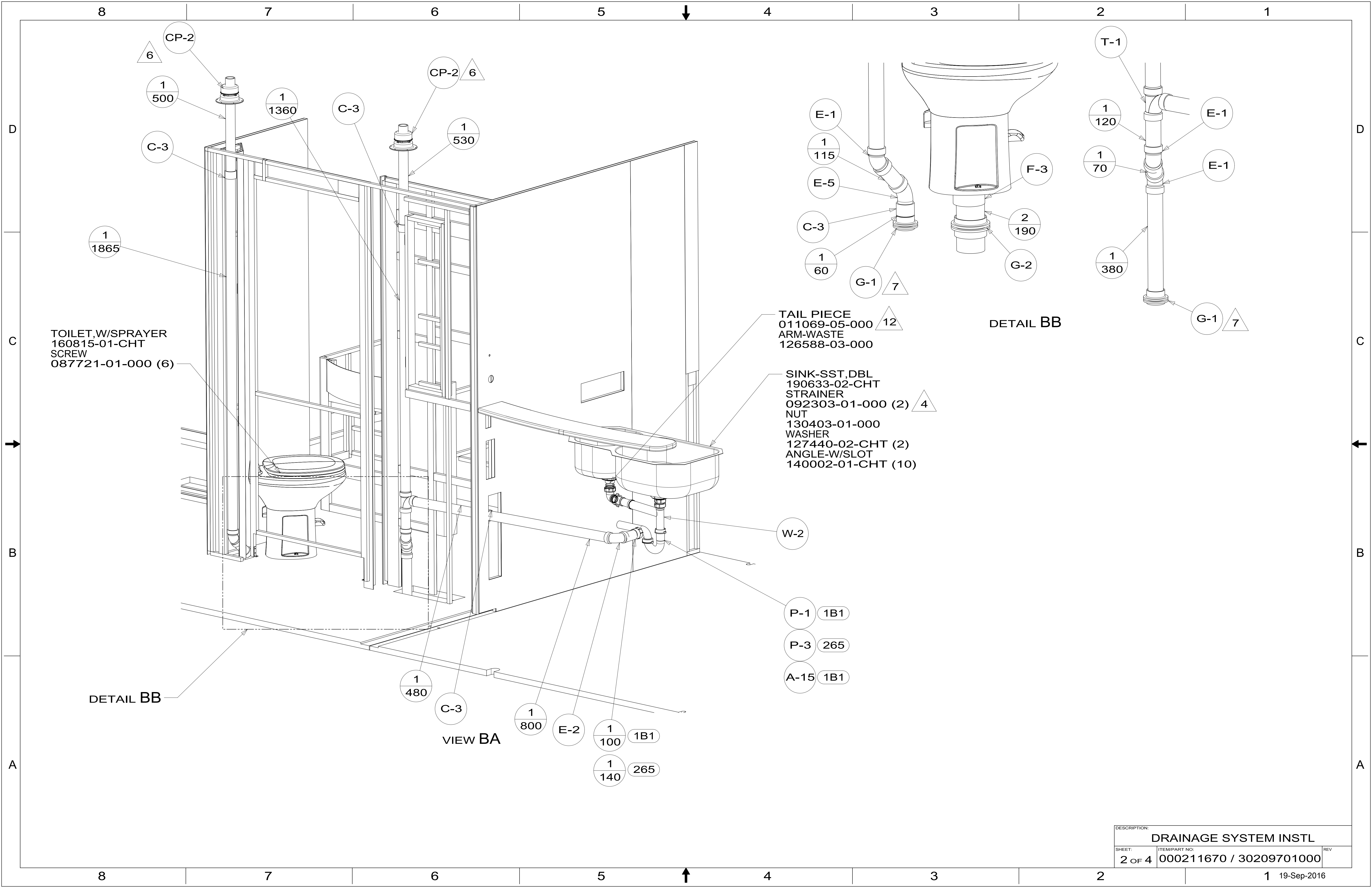


DSNR:		ALL DIMENSIONS ARE IN MILLIMETERS	
DIFFR:		MATERIAL:	
UNSPECIFIED TOLERANCES:			
WHOLE DIM (X)	3		
ONE-PLACE (X.X)	1.5		
TWO-PLACE (X.XX)	0.50		
ANGLE	1°		
REFER TO ES0018 FOR FASTENER TIGHTENING GUIDELINES		WEIGHT: (LBS)	FIRST USED: (REF)
DESCRIPTION: DRAINAGE SYSTEM INSTL			
SHEET: 1 OF 4	ITEM/PART NO: 000211670 / 30209701000	REV	

X-X
 FOR DRAINAGE CALLOUTS SEE DWG NO. 116229-01-000

NOTES:

8 7 6 5 4 3 2 1 REF: 1 19-Sep-2016



CP-2 6
1 500
1 1360
C-3

CP-2 6
1 530

1 1865

E-1
1 115
E-5
C-3
1 60
G-1 7

F-3
2 190
G-2

T-1
1 120
E-1
1 70
E-1
1 380
G-1 7

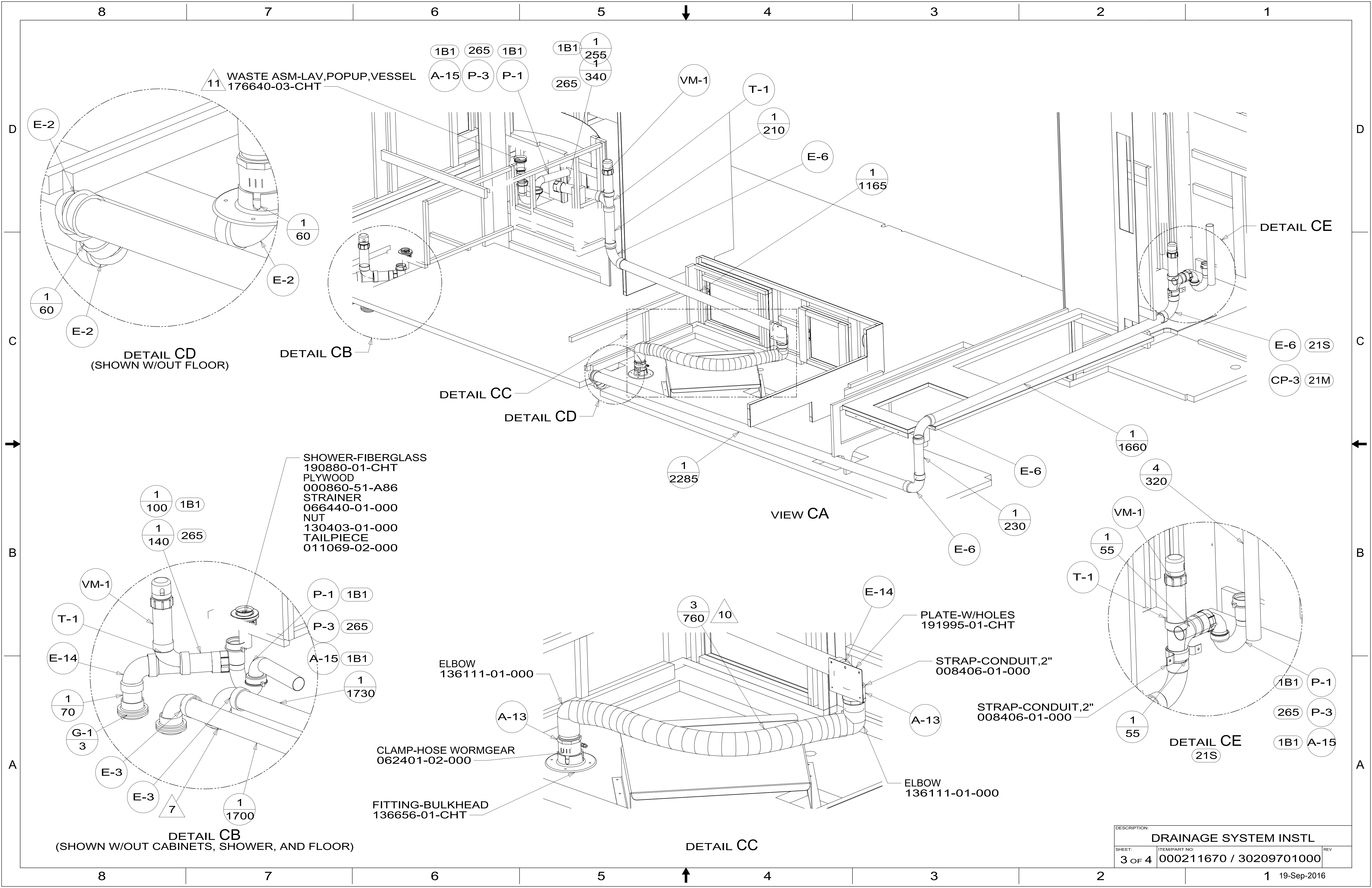
12

4

W-2
P-1 1B1
P-3 265
A-15 1B1

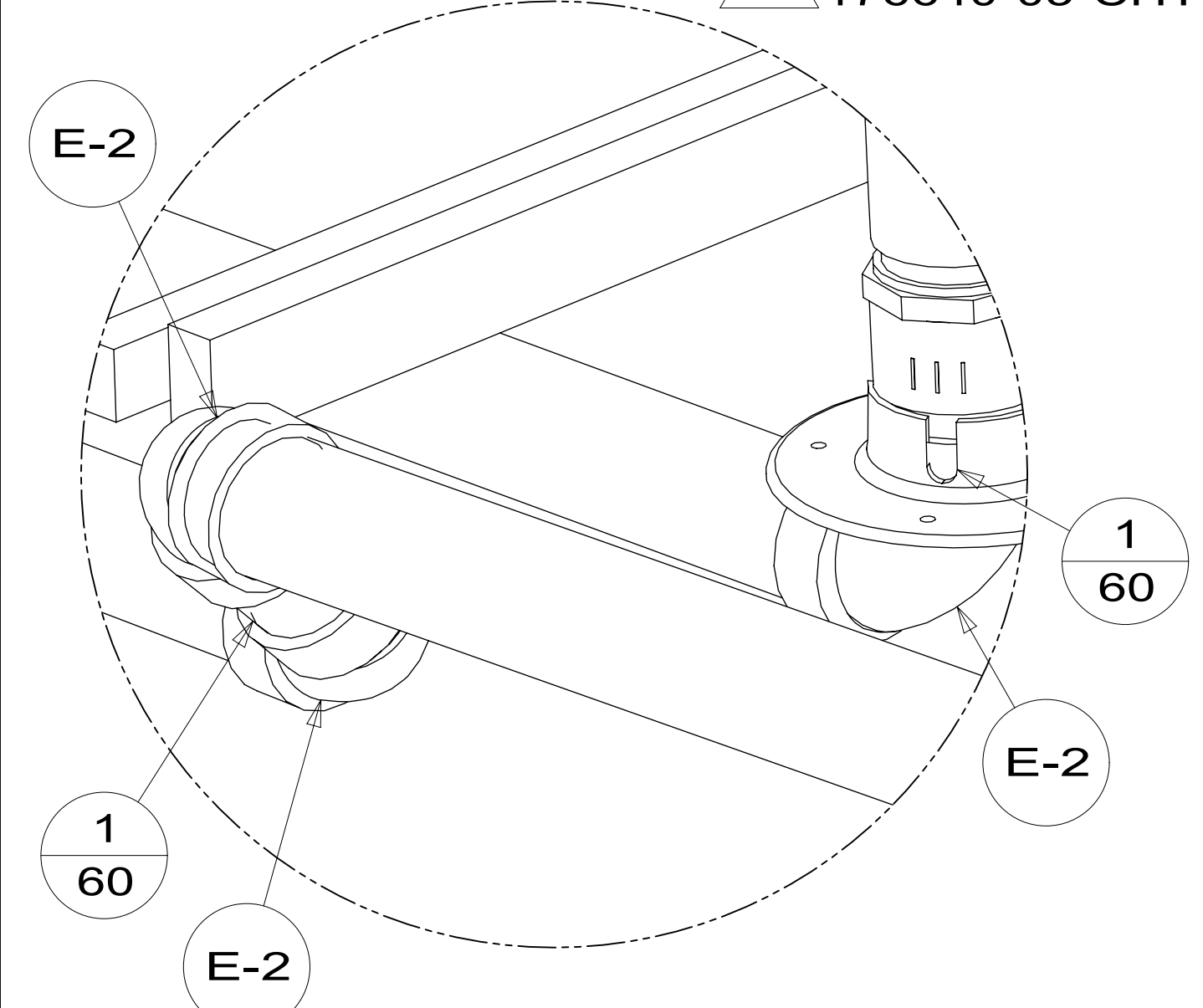
1 480
C-3
1 800
E-2
1 100 1B1
1 140 265

DESCRIPTION: DRAINAGE SYSTEM INSTL		
SHEET: 2 OF 4	ITEM/PART NO: 000211670 / 30209701000	REV

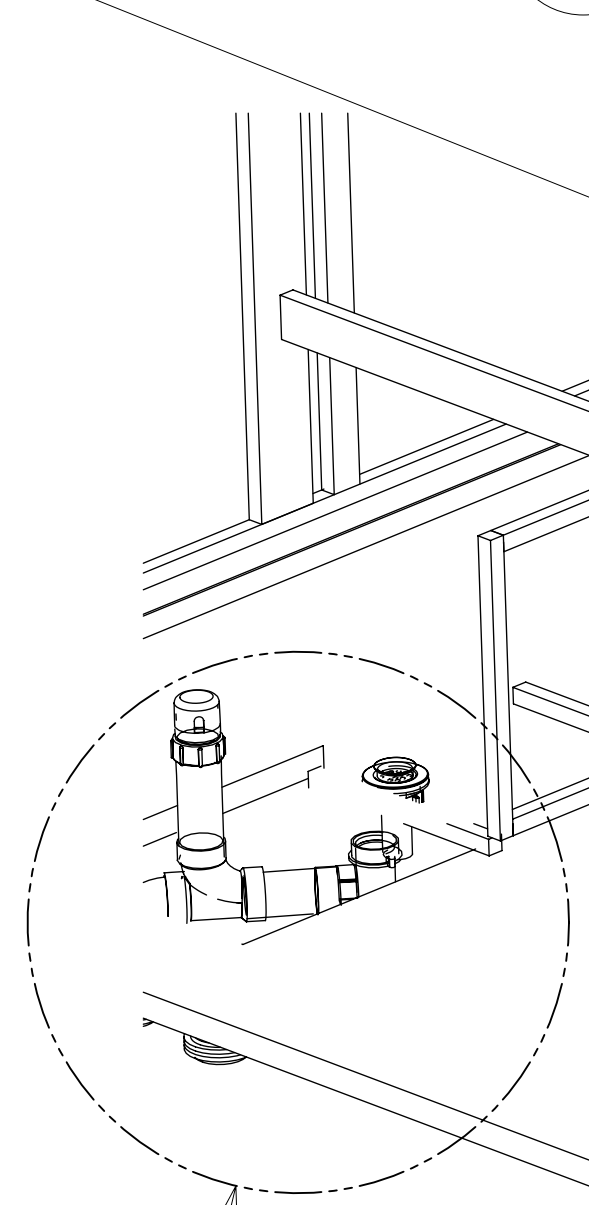


11 WASTE ASM-LAV, POPUP, VESSEL
176640-03-CHT

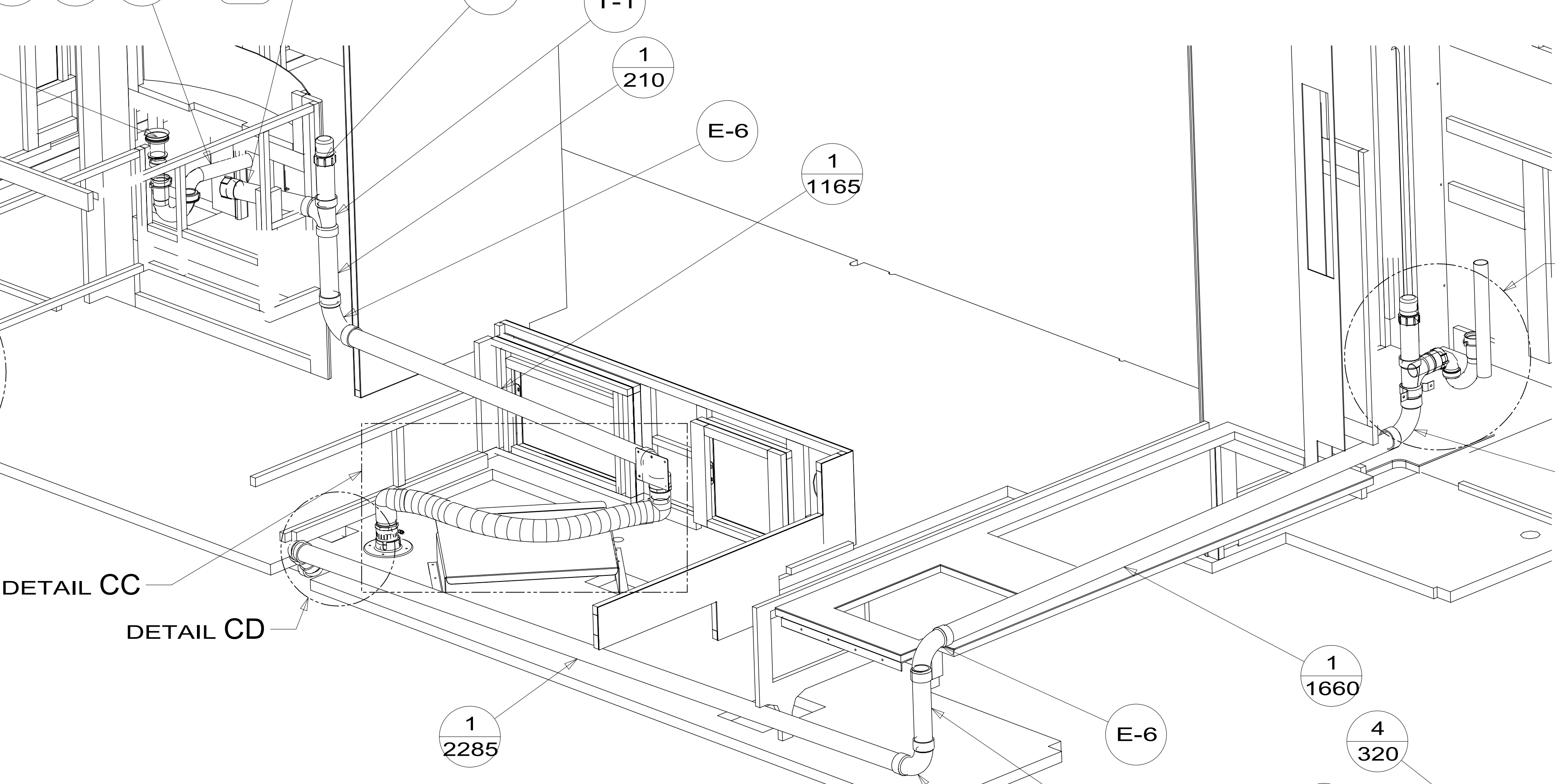
1B1 265 1B1
A-15 P-3 P-1
1B1 255 1
265 340



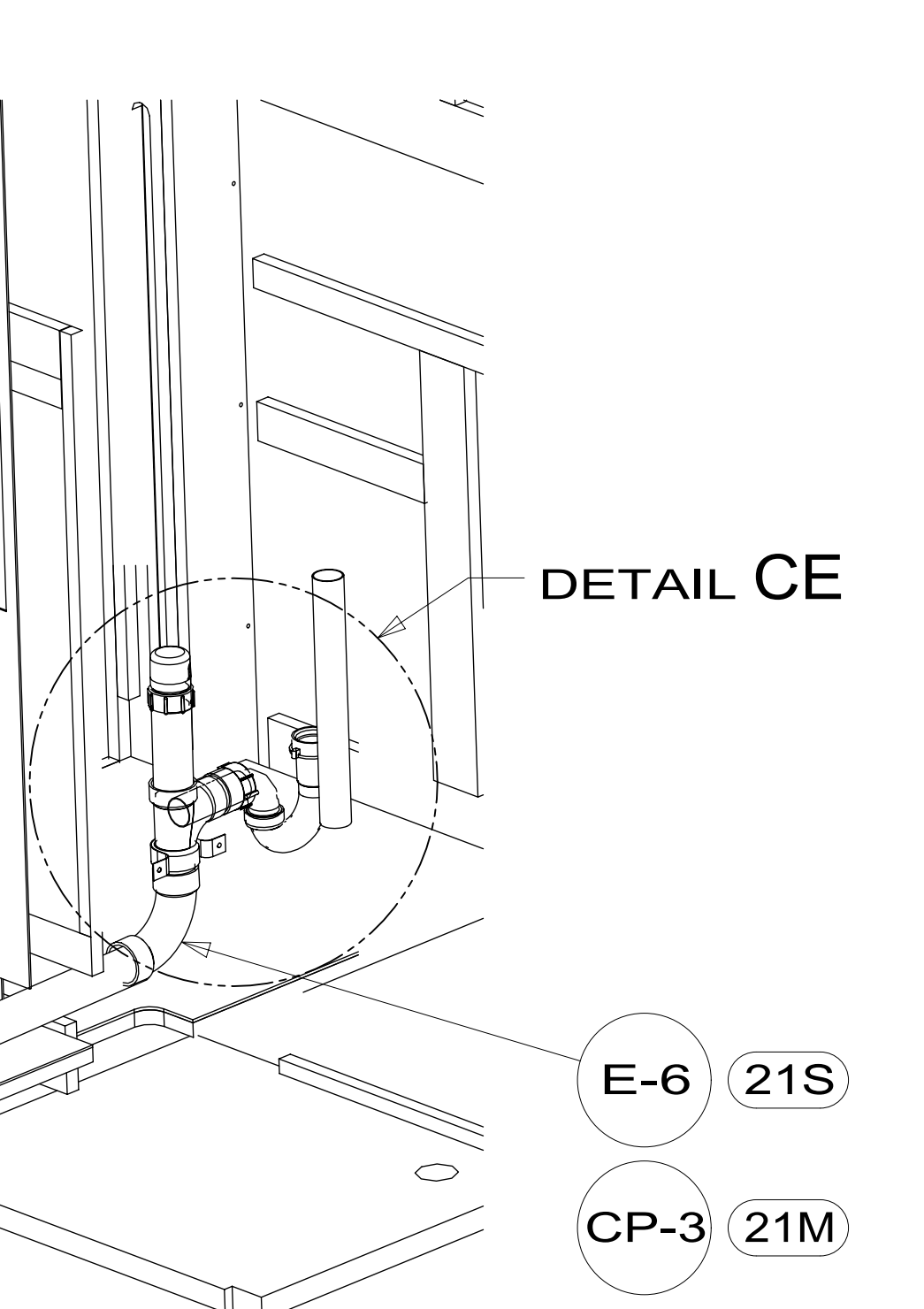
DETAIL CD
(SHOWN W/OUT FLOOR)



DETAIL CB



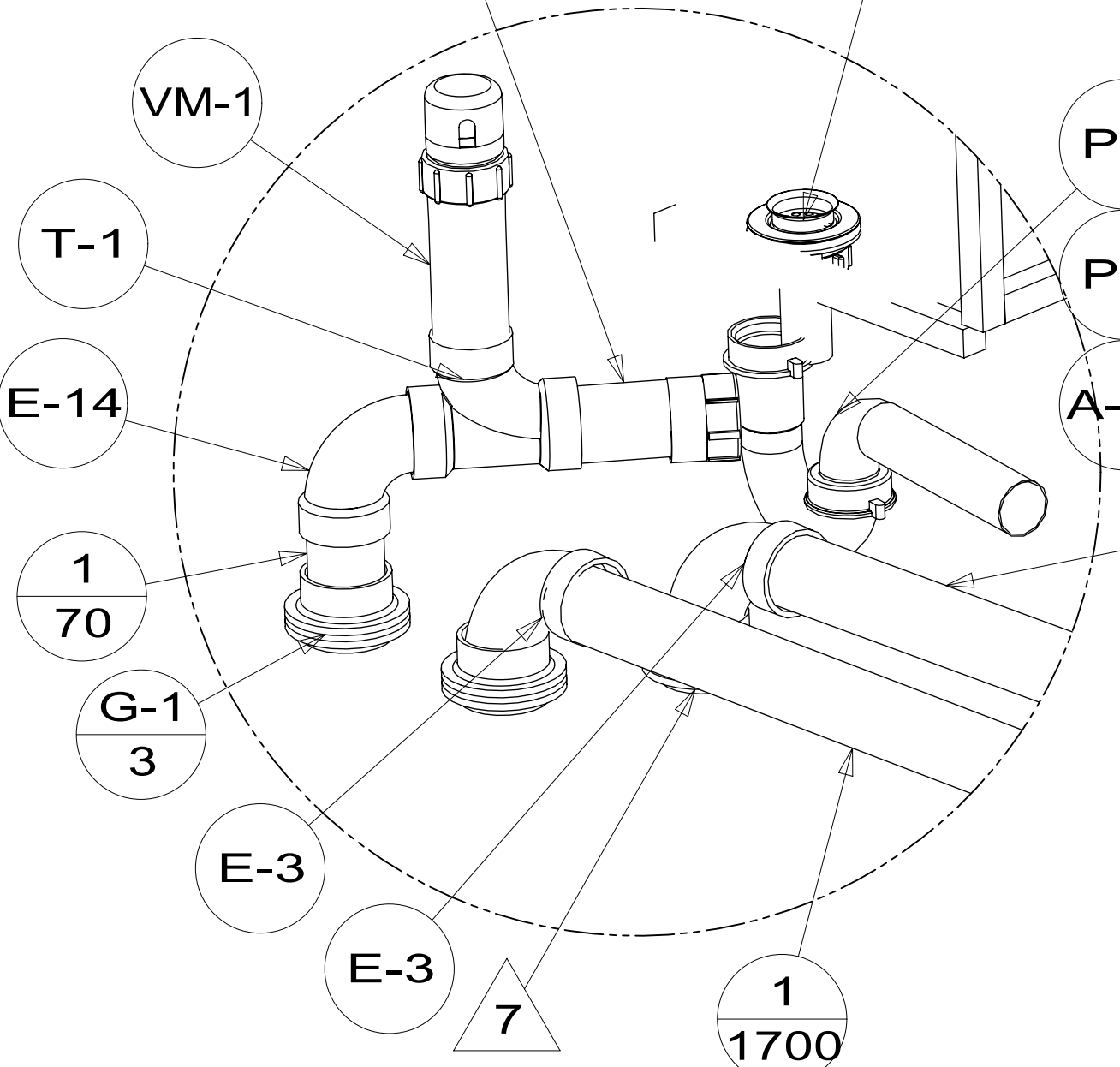
VIEW CA



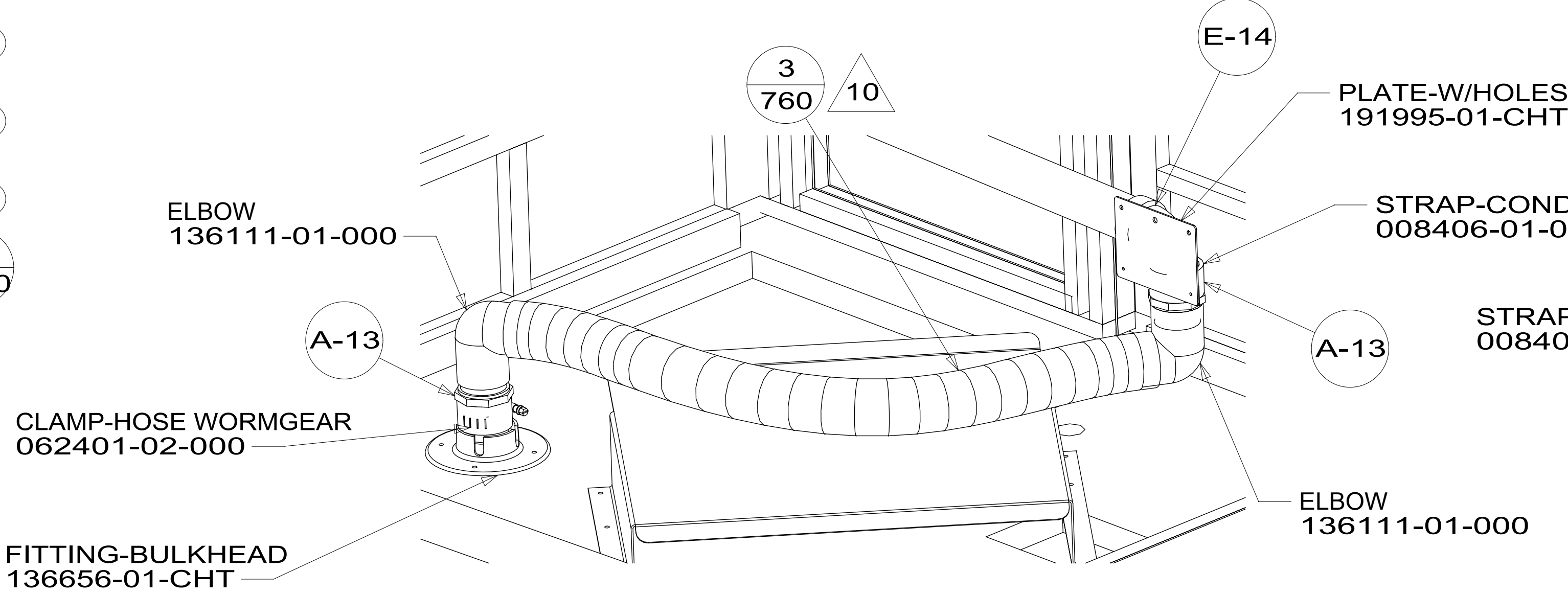
DETAIL CE

SHOWER-FIBERGLASS
190880-01-CHT
PLYWOOD
000860-51-A86
STRAINER
066440-01-000
NUT
130403-01-000
TAILPIECE
011069-02-000

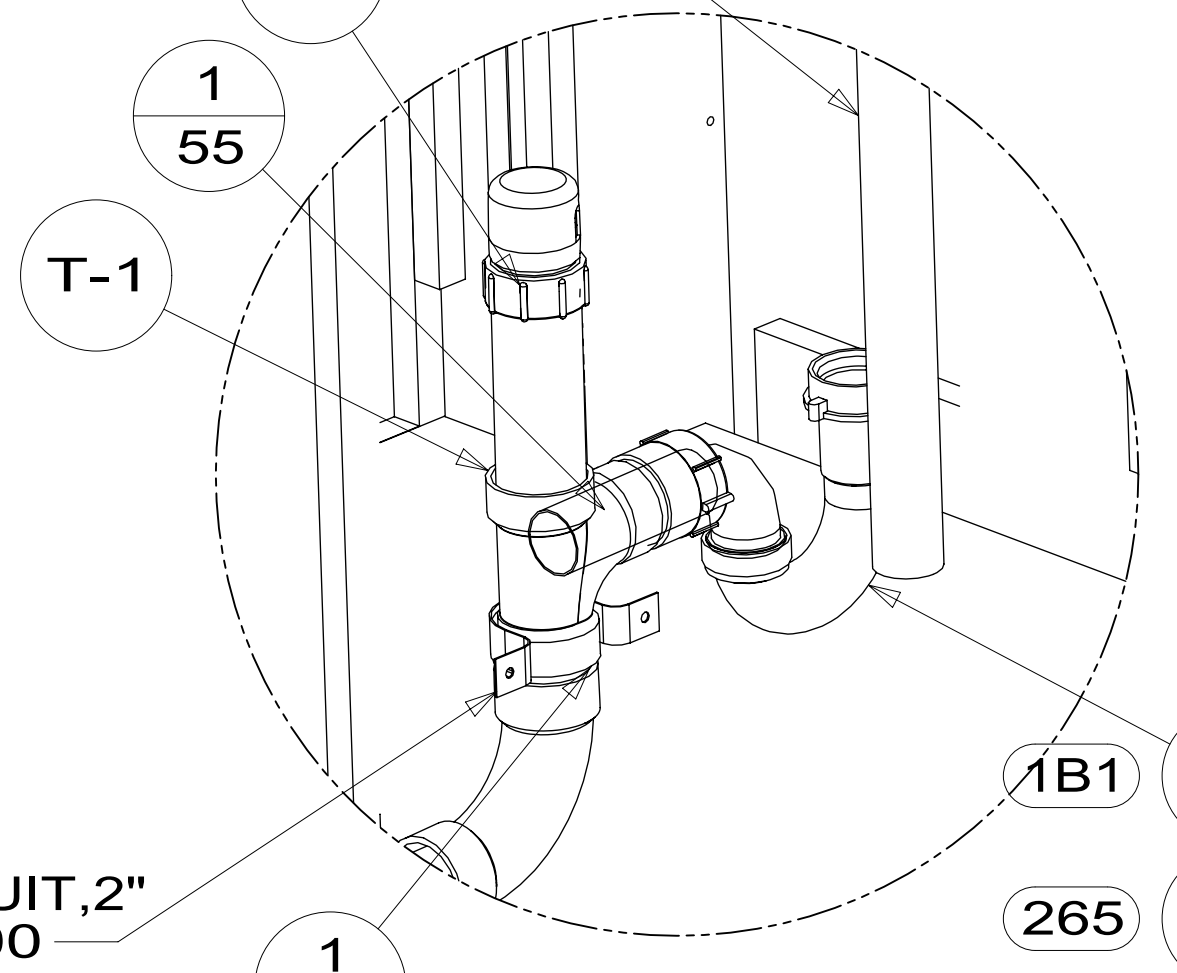
1/100 1B1
1/140 265



DETAIL CB
(SHOWN W/OUT CABINETS, SHOWER, AND FLOOR)



DETAIL CC



DETAIL CE
21S

DESCRIPTION:		
DRAINAGE SYSTEM INSTL		
SHEET:	ITEM/PART NO.:	REV
3 OF 4	000211670 / 30209701000	

8

7

6

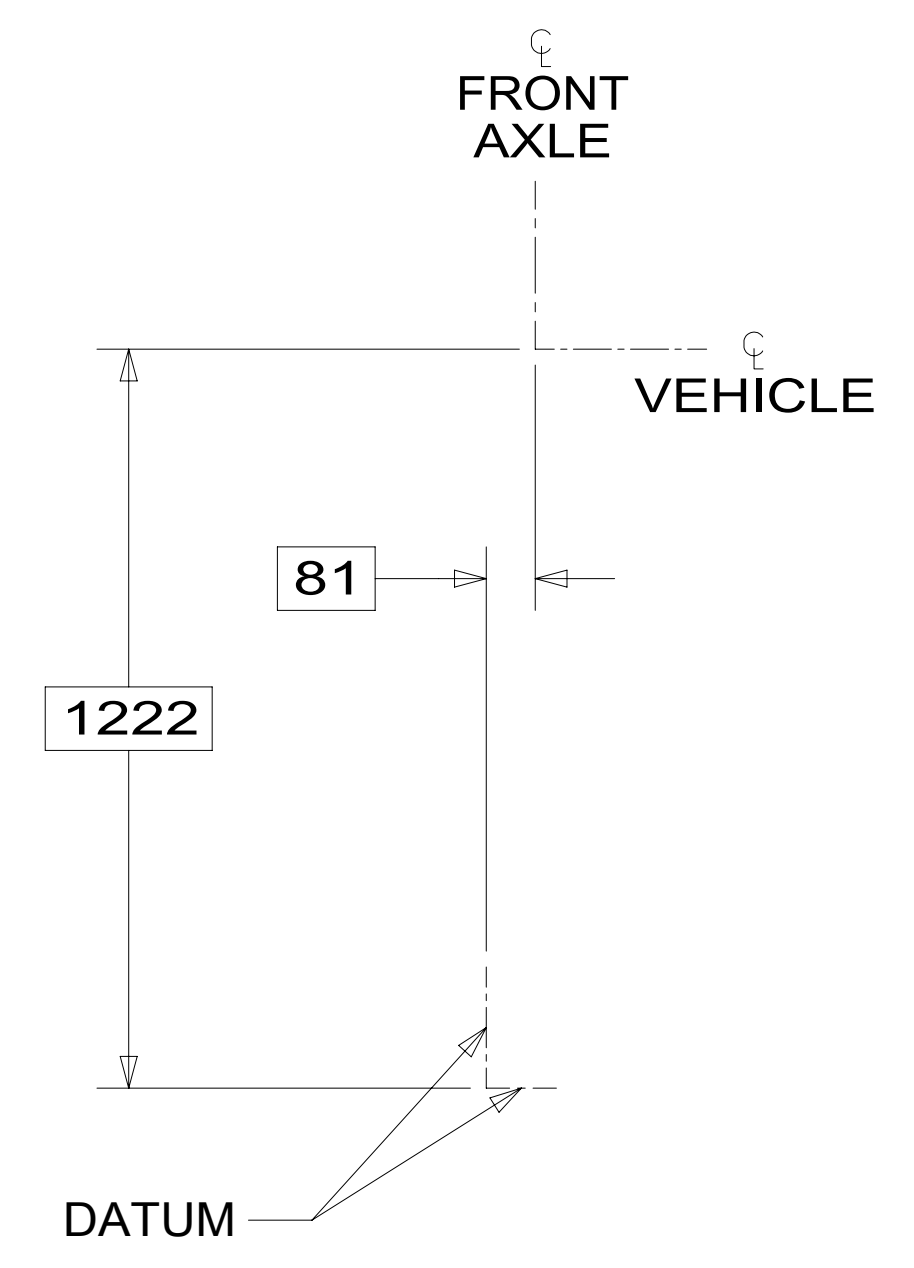
5

4

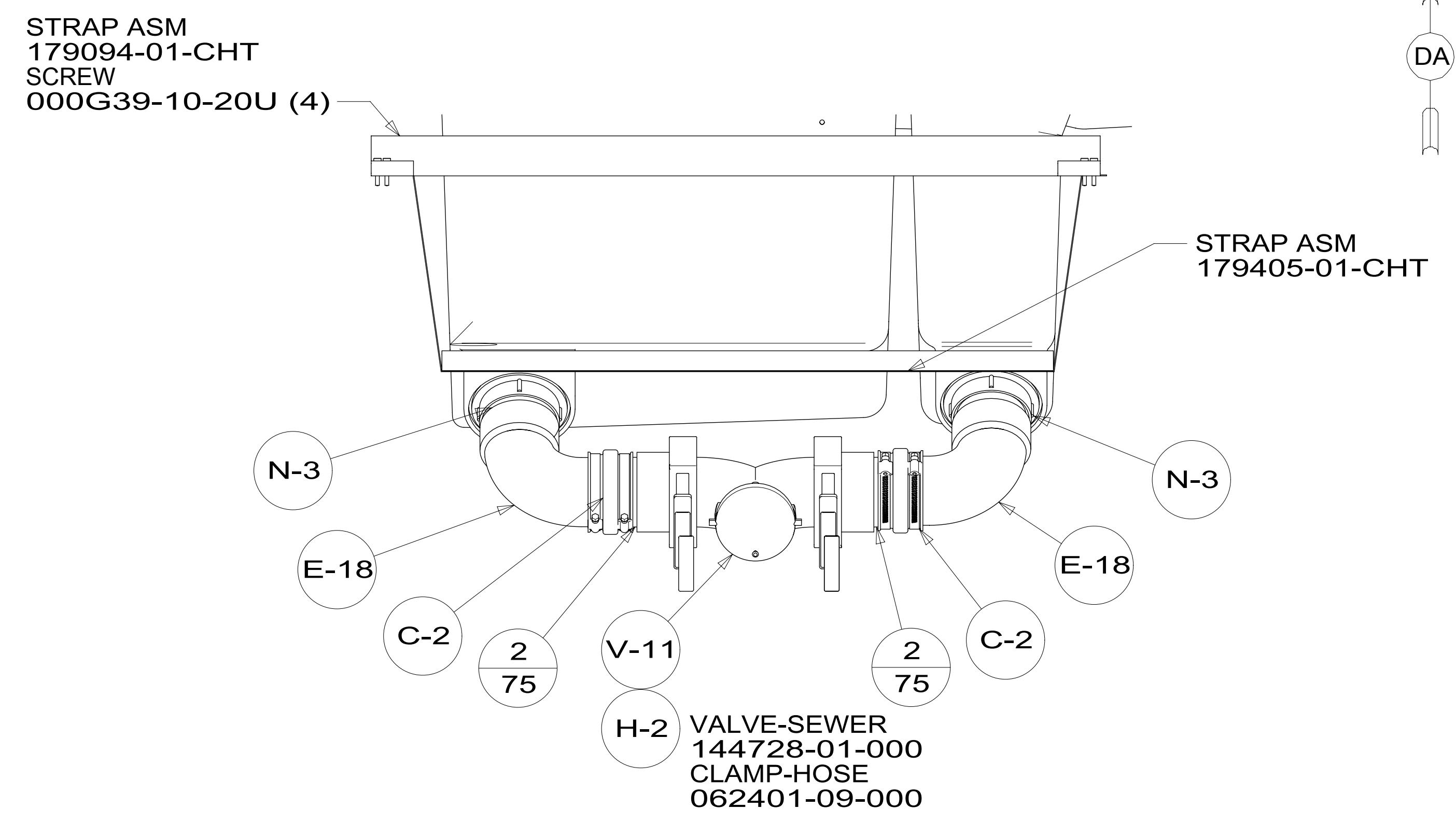
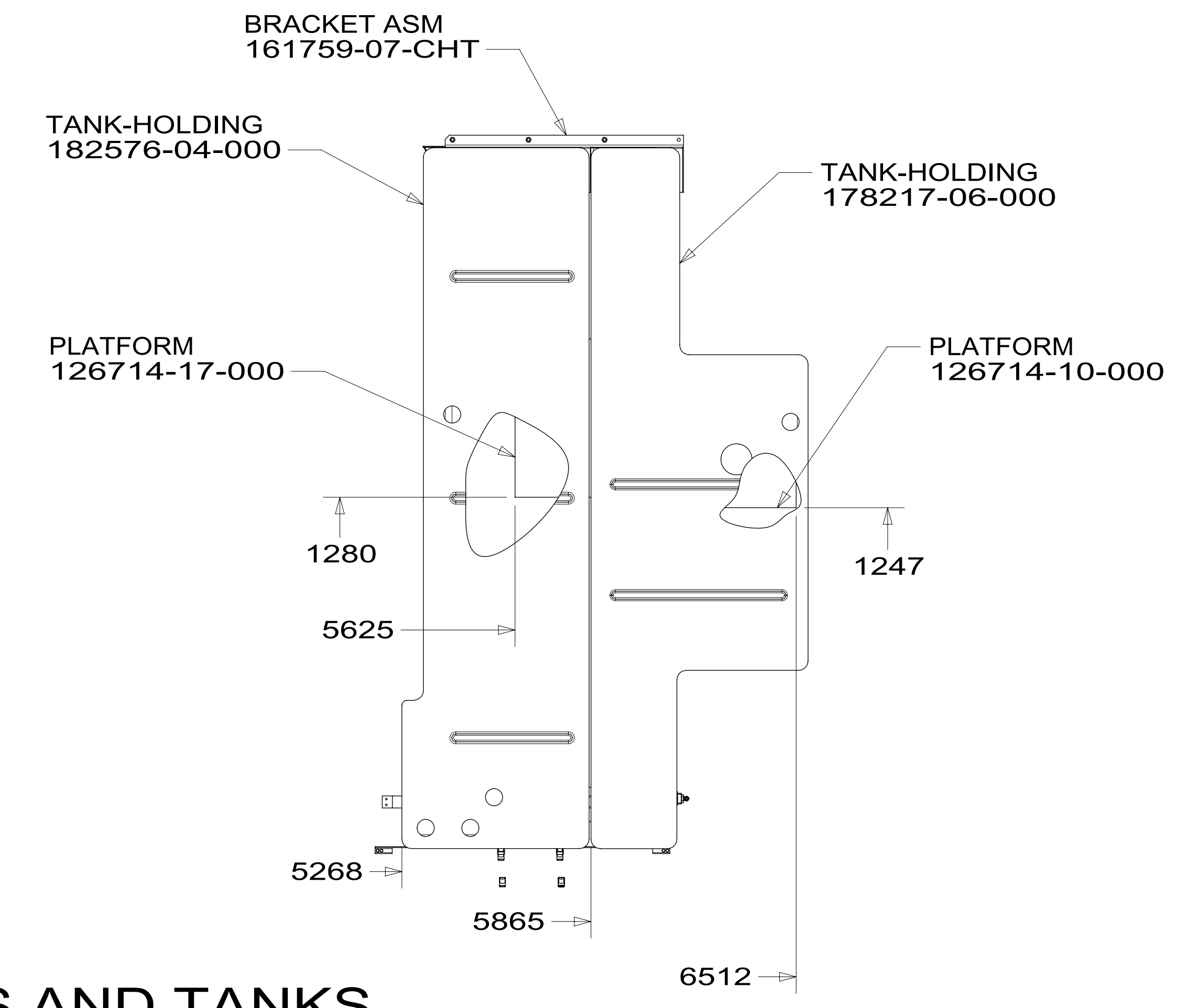
3

2

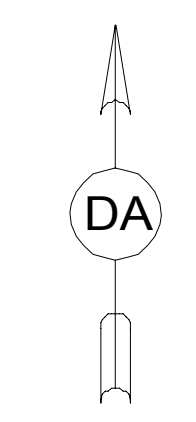
1



TOP VIEW SHOWING ONLY DRAINS AND TANKS



VIEW DA



DESCRIPTION:		
DRAINAGE SYSTEM INSTL		
SHEET:	ITEM/PART NO:	REV
4 OF 4	000211670 / 30209701000	

8

7

6

5

4

3

2

1

19-Sep-2016