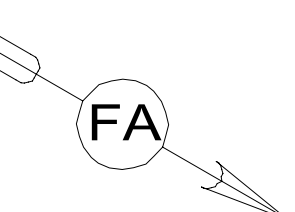


3
 FAN-DEFROSTER
 154851-01-000
 TAPE-FOAM
 99069-01-000
 (120)(4)
 (45)(2)
 SCREW
 G11-08-12U (6)
 PANEL-PLENUM
 170841-04-CHT
 SCREW
 G39-10-12U (6)
 HOSE
 179183-01-000
 (650)
 ADAPTOR-HOSE
 171749-01-CHT (2)

6
 TO SUNVISOR SHADE
 (6) BUTT SPLICES
 HHK-BLK
 HHL-BLK/GRY
 HHM-BLK
 HHN-BLK/GRY
 KE-BRN (2)

SPEAKER
 171547-01-CHT (2)
 SCREW
 G11-08-20U (8)

8 15D
 RECEIVER-SATELLITE RADIO
 181908-05-000



RECEPTACLE-12V
 111414-01-000
 DETAIL AA

WIRE ASM-IP,MAIN
 000022748 / 31453601000

6 PIN HOUSING
 TO LEFT MIRROR

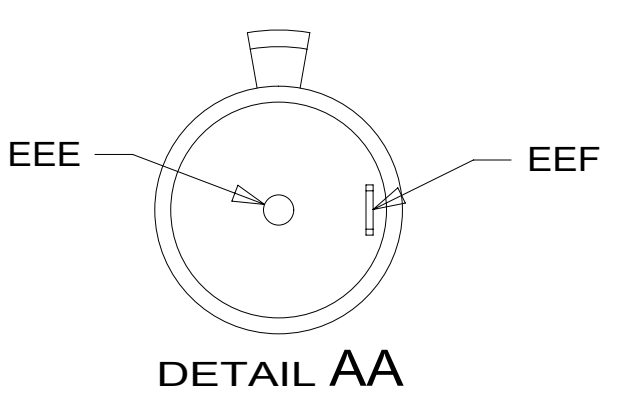
ALARM-JACKS DOWN
 160876-01-000
 BRACKET-BUZZER
 173102-01-CHT
 SCREW
 G39-10-12U (2)

RECEPTACLE-12V
 111414-01-000
 DETAIL AA

BRACKET-RELAY PANEL
 145448-01-CHT
 SCREW
 G67-10-08U (4)

12V BREAKER PANEL
 DETAIL CA

DOOR ASM
 145066-03-CHT
 SCREW
 G67-06-10U (6)
 SCREW
 G67-10-08U (4)



- 8 WIRE TIE SAT TUNER TO DASH RADIO WIRING.
- 7 TUCK IN GROOVE ON BOTTOM SIDE OF COUNTER TOP.
- 6 CUT VISOR WIRING TO 300MM BEFORE CONNECTING.
- 5 SEE WIRING INSTL-BODY, 12V FOR ADDITIONAL INFORMATION.
- 4 USE TAPE 8363-03-000 TO SECURE WIRES IN A-POST.
- 3 APPLY FOAM TAPE TO BOTTTOM OF FAN TO SEAL FAN TO PANEL.

- 2. USE SEAL-TRIM 093305-01-CHT TO PROTECT WIRES FROM SHARP EDGES.
- 1. SEE WIRING INSTL-CHASSIS FOR ADDITIONAL INFORMATION.

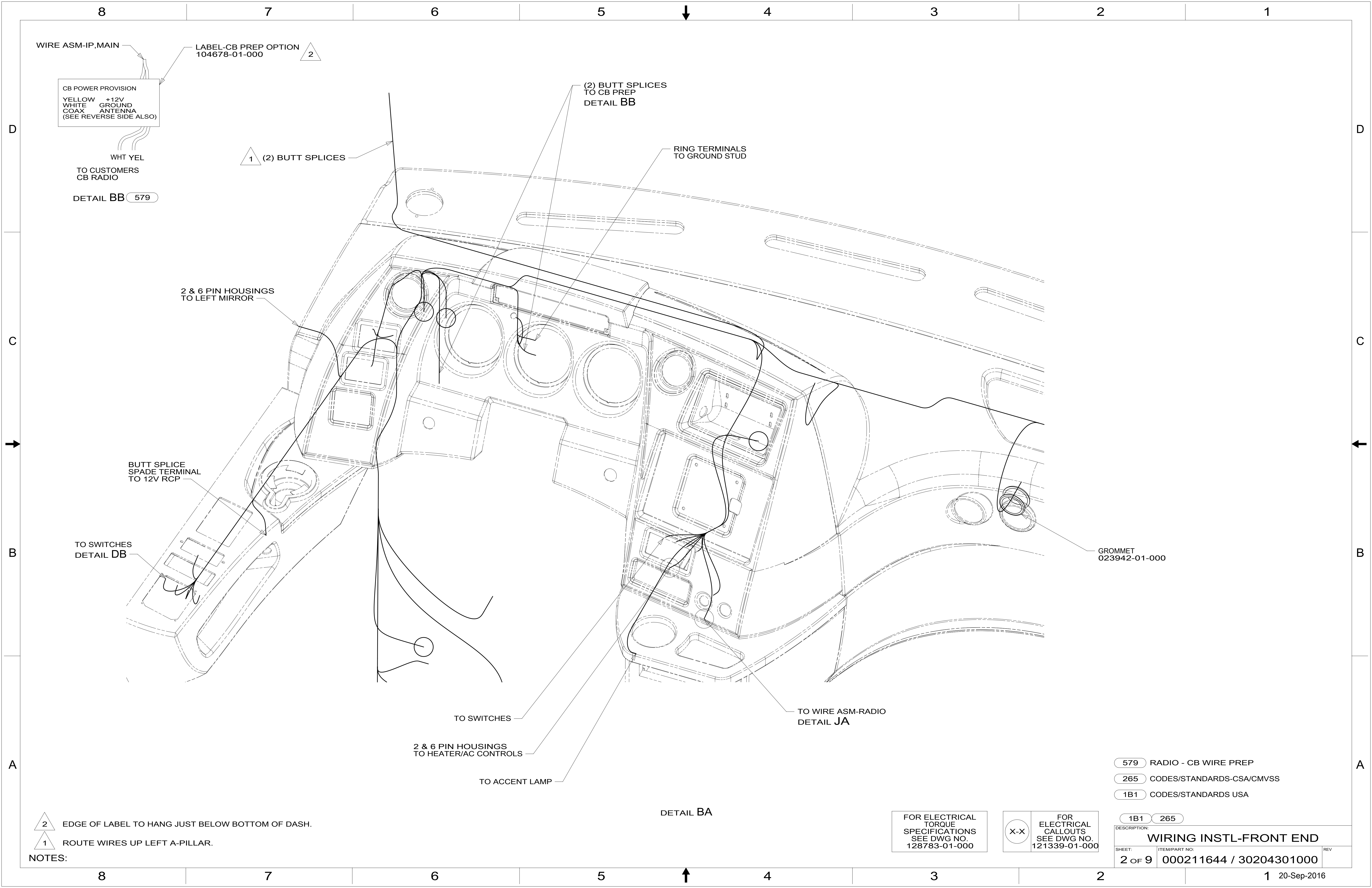
NOTES:

FOR ELECTRICAL TORQUE SPECIFICATIONS SEE DWG NO. 128783-01-000

FOR ELECTRICAL CALLOUTS SEE DWG NO. 121339-01-000

- 15D INFOTAINMENT CENTER/GPS
- 265 CODES/STANDARDS-CSA/CMVSS
- 1B1 CODES/STANDARDS USA

WINNEBAGO COPYRIGHT 2016 WINNEBAGO INDUSTRIES, INC.	
DSNR:	ALL DIMENSIONS ARE IN MILLIMETERS
DFFR:	
UNSPECIFIED TOLERANCES:	MATERIAL:
WHOLE DIM (X) : 3	
ONE-PLACE (X.X) : 1.5	
TWO-PLACE (X.XX) : 0.50	
ANGLE : 1°	
REFER TO ES0018 FOR FASTENER TIGHTENING GUIDELINES	WEIGHT: (LBS) FIRST USED:
	16 P-SER
WIRING INSTL-FRONT END	
SHEET: 1 OF 9	ITEM/PART NO: 000211644 / 30204301000
REF:	REV: 1 20-Sep-2016



WIRE ASM-IP,MAIN
 CB POWER PROVISION
 YELLOW +12V
 WHITE GROUND
 COAX ANTENNA
 (SEE REVERSE SIDE ALSO)

LABEL-CB PREP OPTION
 104678-01-000

(2) BUTT SPLICES
 TO CB PREP
 DETAIL BB

RING TERMINALS
 TO GROUND STUD

1 (2) BUTT SPLICES

WHT YEL
 TO CUSTOMERS
 CB RADIO
 DETAIL BB 579

2 & 6 PIN HOUSINGS
 TO LEFT MIRROR

BUTT SPLICE
 SPADE TERMINAL
 TO 12V RCP

GROMMET
 023942-01-000

TO SWITCHES
 DETAIL DB

TO WIRE ASM-RADIO
 DETAIL JA

TO SWITCHES

2 & 6 PIN HOUSINGS
 TO HEATER/AC CONTROLS

TO ACCENT LAMP

DETAIL BA

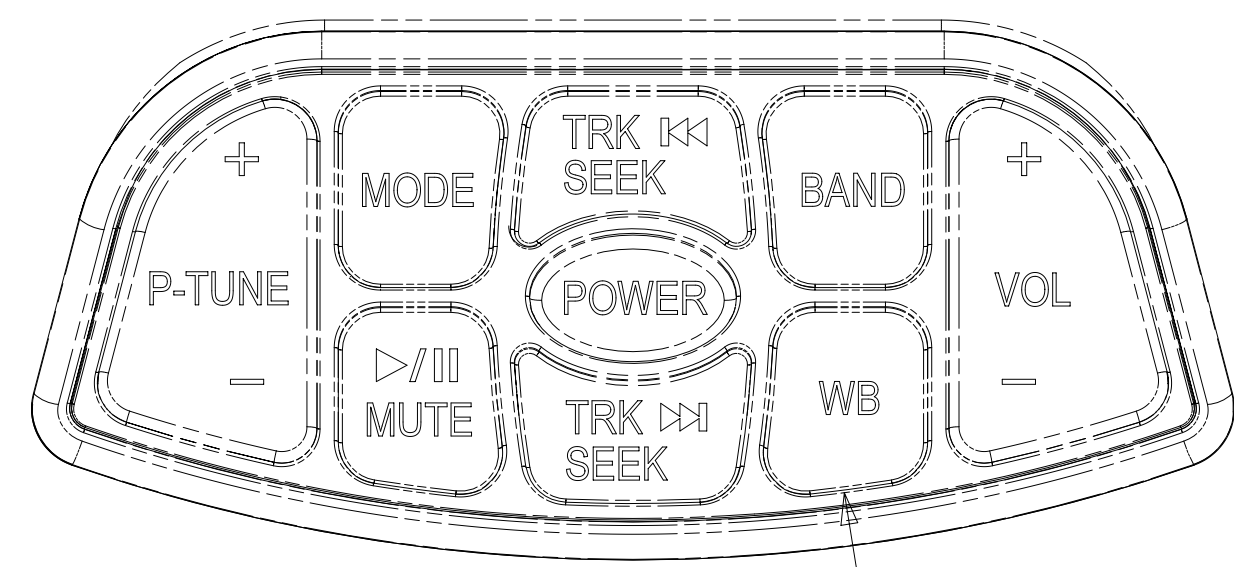
- 579 RADIO - CB WIRE PREP
- 265 CODES/STANDARDS-CSA/CMVSS
- 1B1 CODES/STANDARDS USA

- 2 EDGE OF LABEL TO HANG JUST BELOW BOTTOM OF DASH.
- 1 ROUTE WIRES UP LEFT A-PILLAR.

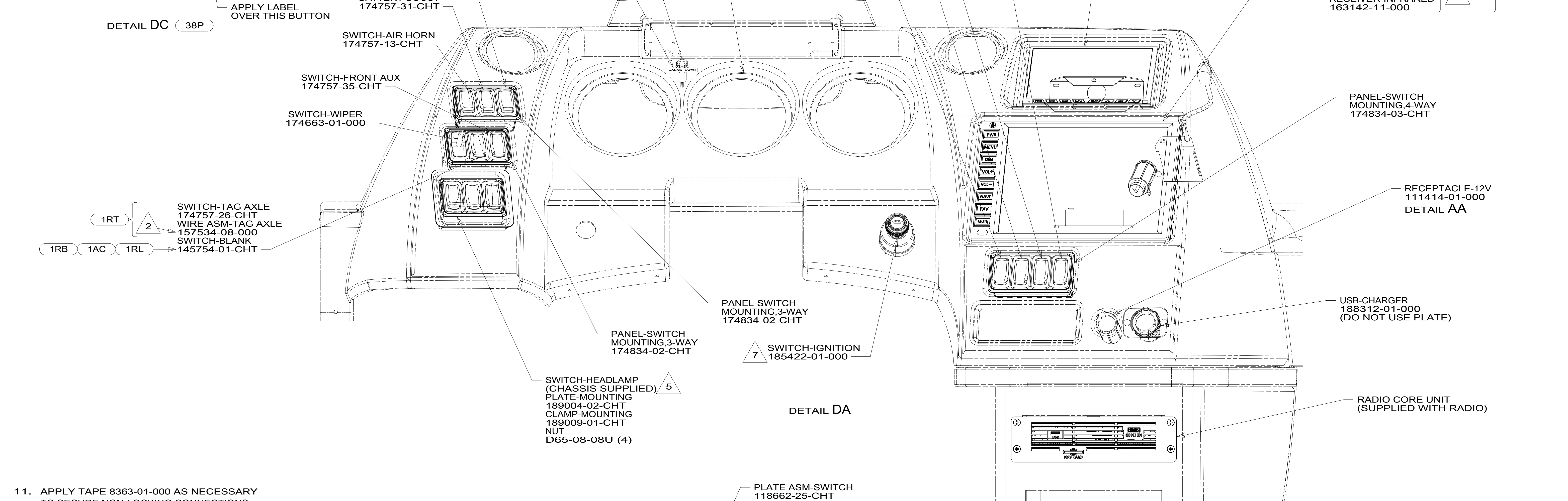
FOR ELECTRICAL
 TORQUE
 SPECIFICATIONS
 SEE DWG NO.
 128783-01-000

FOR ELECTRICAL
 CALLOUTS
 SEE DWG NO.
 121339-01-000

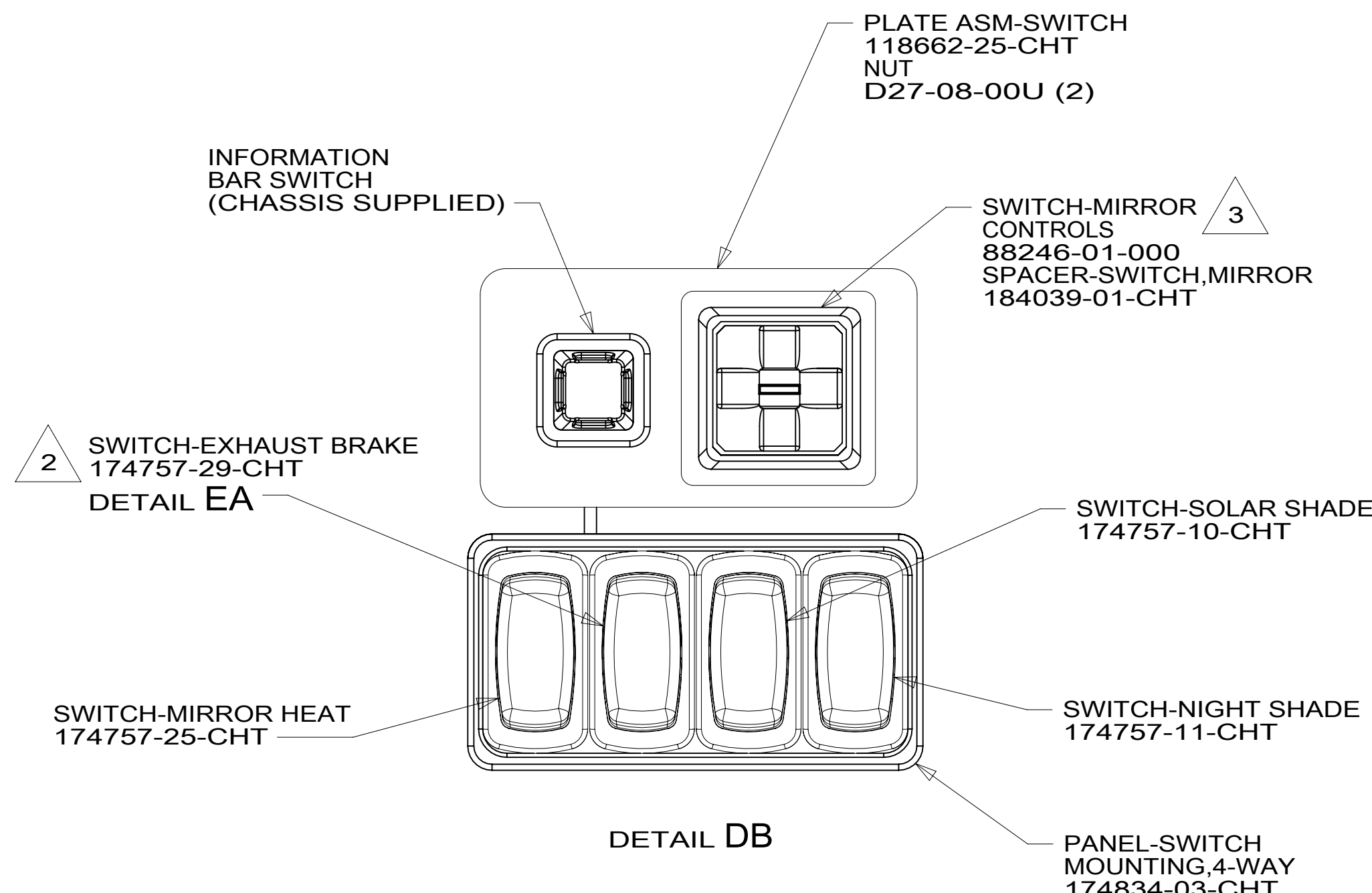
DESCRIPTION:	
WIRING INSTL-FRONT END	
SHEET:	ITEM/PART NO:
2 OF 9	000211644 / 30204301000
REV	
	1 20-Sep-2016



DETAIL DC 38P



11. APPLY TAPE 8363-01-000 AS NECESSARY TO SECURE NON-LOCKING CONNECTIONS.
10. MOUNT GPS ANTENNA ON TOP OF DEFROST PLENUM.
9. APPLY LABEL OVER "WB" BUTTON. SEE DETAIL DC.
8. ROUTE TEMP SENSOR THRU HOLE IN BULKHEAD TO BRACKET (SEE SHEET 6).
7. REMOVE AND REPLACE CHASSIS SUPPLIED IGNITION SWITCH.
6. INSTALL PER DRAWING 170205.
5. CHASSIS SUPPLIED ROCKER SWITCHES. DOME LAMP SWITCH NOT USED. SEE DETAIL DD FOR SWITCH POSITION.
4. SEE SHEET 5 FOR GAUGE PLACEMENT.
3. MOUNT SWITCH SO WHEN ACTUATOR IS PUSHED LEFT, THE LETTER L IS SHOWING.
2. CONNECT TO MATING LABELED CONNECTOR ON CHASSIS SUPPLIED WIRING.
1. CONNECT POSITIVE WIRE TO TERMINAL MARKED WITH RED, YEL-WINNEBAGO WIRING RED-HWH WIRING



DETAIL DB



DETAIL DD

FOR ELECTRICAL TORQUE SPECIFICATIONS SEE DWG NO. 128783-01-000

FOR ELECTRICAL CALLOUTS SEE DWG NO. 121339-01-000

- 1RL FRTL 38,320 400 8.9L 6 SPD
- 1RT FRTL 44,320 450 8.9L 6 SPD
- 1RB FRTL 38,320 380 8.9L 6 SPD
- 1AC FRTL 32,350 360HP 6.7L 6 SPD
- 38P STEERING WHEEL-CUSTOM
- 15D GPS-NAVIGATION SYSTEM
- 265 CODES/STANDARDS-CSA/CMVSS
- 1B1 CODES/STANDARDS USA

DESCRIPTION:		1B1 265
WIRING INSTL-FRONT END		
SHEET:	ITEM/PART NO.:	REV
4 OF 9	000211644 / 30204301000	

8

7

6

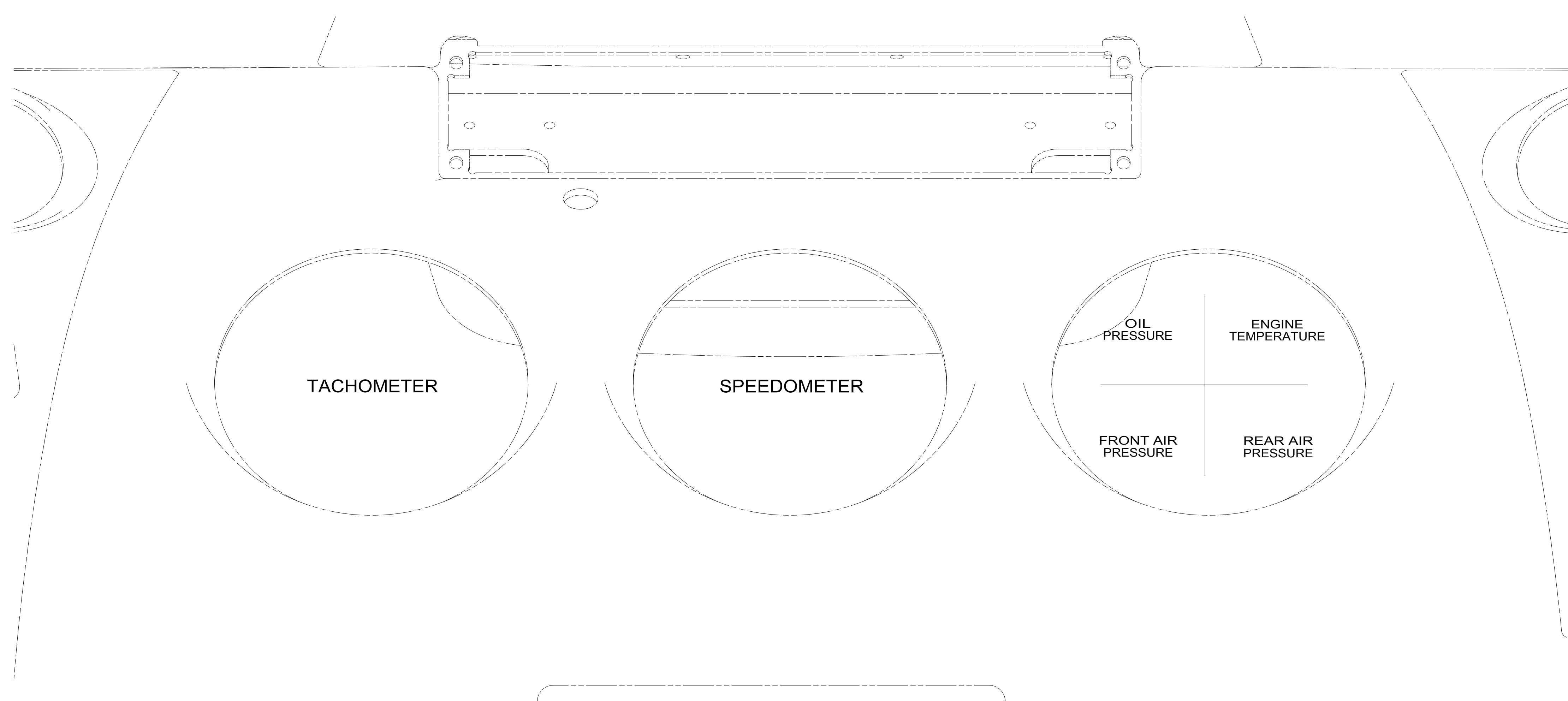
5

4

3

2

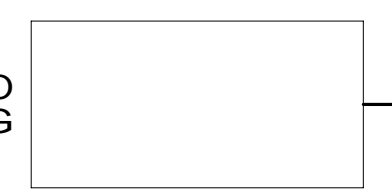
1



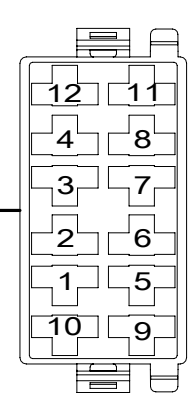
FREIGHTLINER CLUSTER LOCATION

WIRE ASM-EXHAUST BRAKE SWITCH
000026468 / 315655-01-000

1
CONNECTS TO
CHASSIS WIRING



DETAIL EA



FOR ELECTRICAL
TORQUE
SPECIFICATIONS
SEE DWG NO.
128783-01-000

FOR
ELECTRICAL
CALLOUTS
SEE DWG NO.
121339-01-000

- 265 CODES/STANDARDS-CSA/CMVSS
- 1B1 CODES/STANDARDS USA

1B1 265

DESCRIPTION:
WIRING INSTL-FRONT END

SHEET: 5 OF 9	ITEM/PART NO.: 000211644 / 30204301000	REV
------------------	---	-----

1 CHASSIS WIRING HAS MATING CONNECTOR AND IS LABELED "ENGINE BRAKE SWITCH"

NOTES:

8

7

6

5

4

3

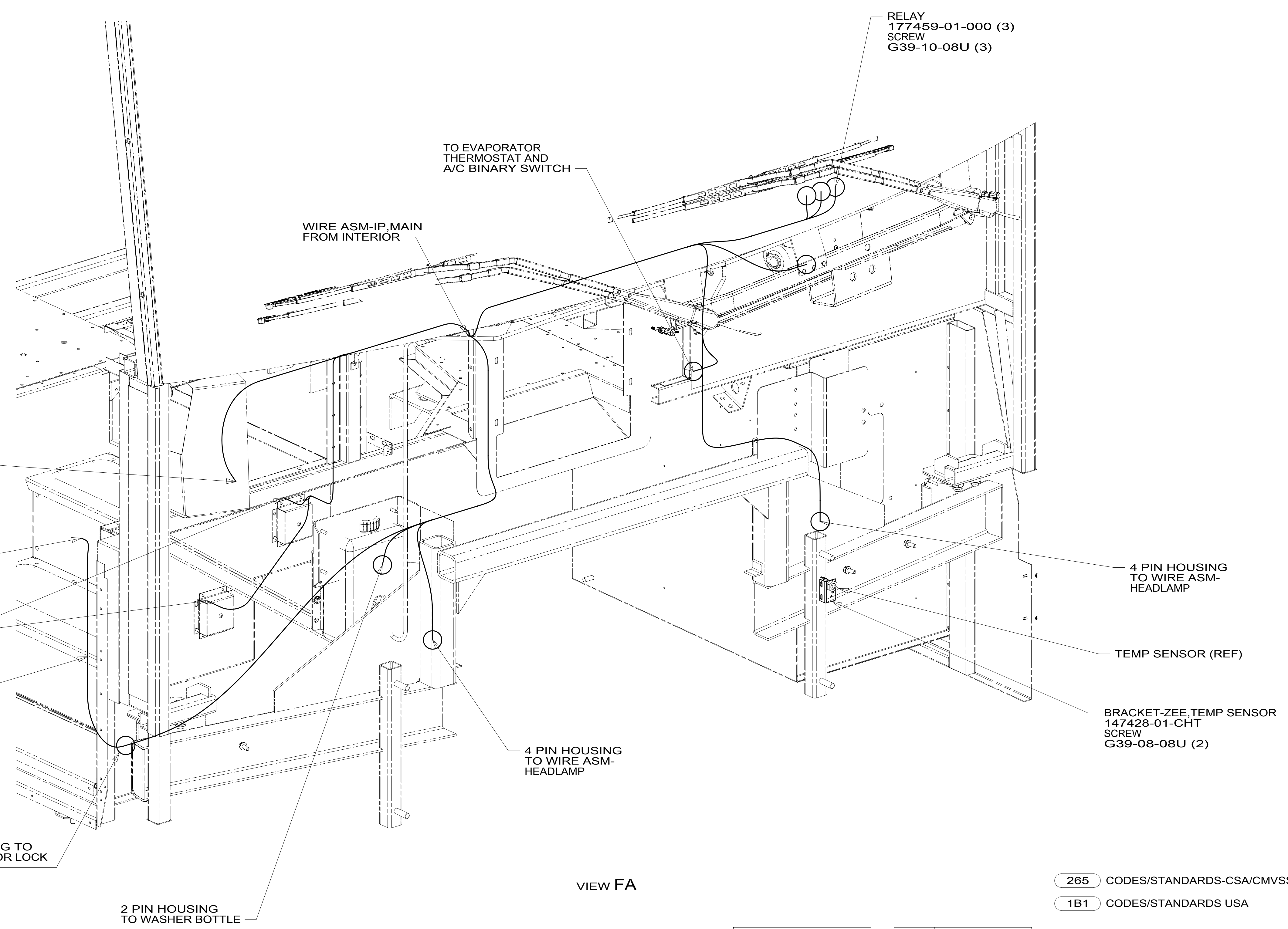
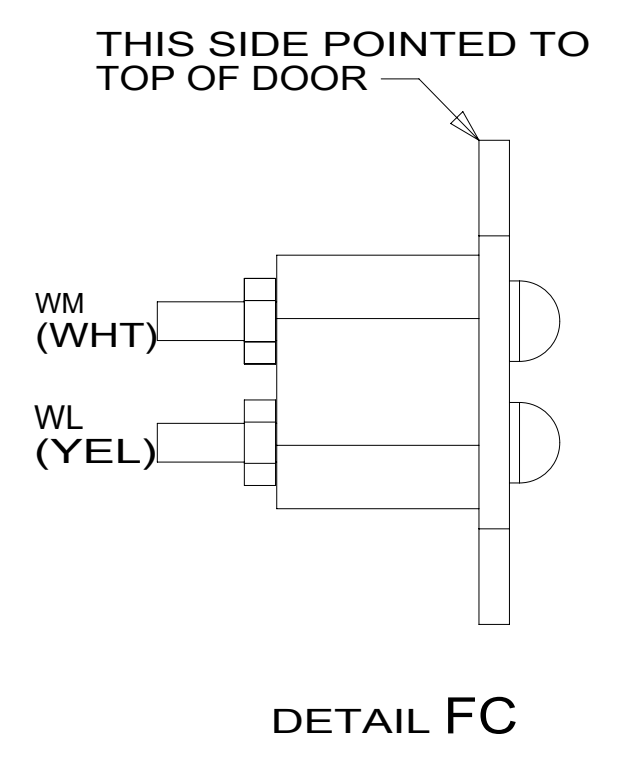
2

1



1 20-Sep-2016

8 7 6 5 4 3 2 1



265 CODES/STANDARDS-CSA/CMVSS

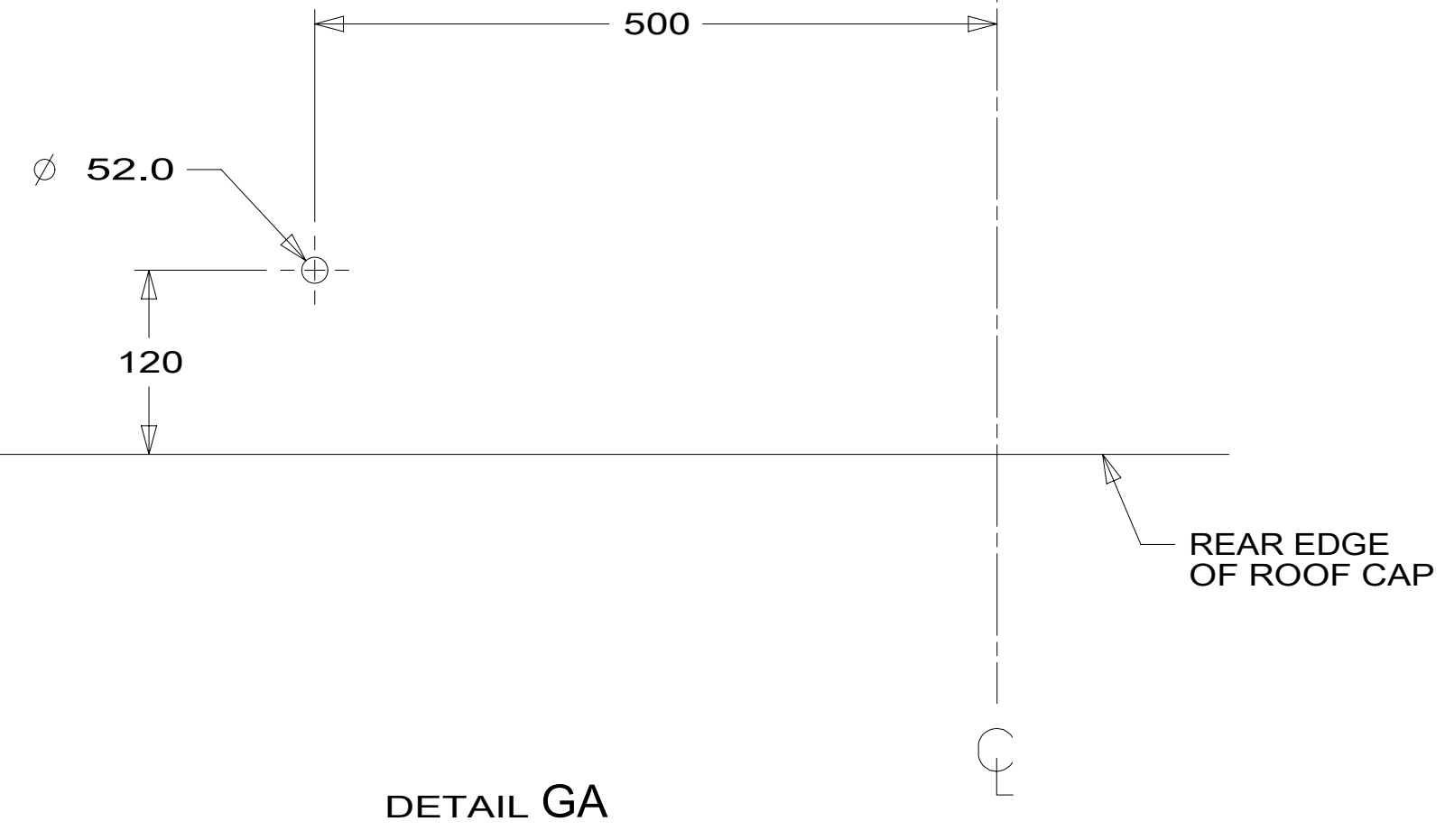
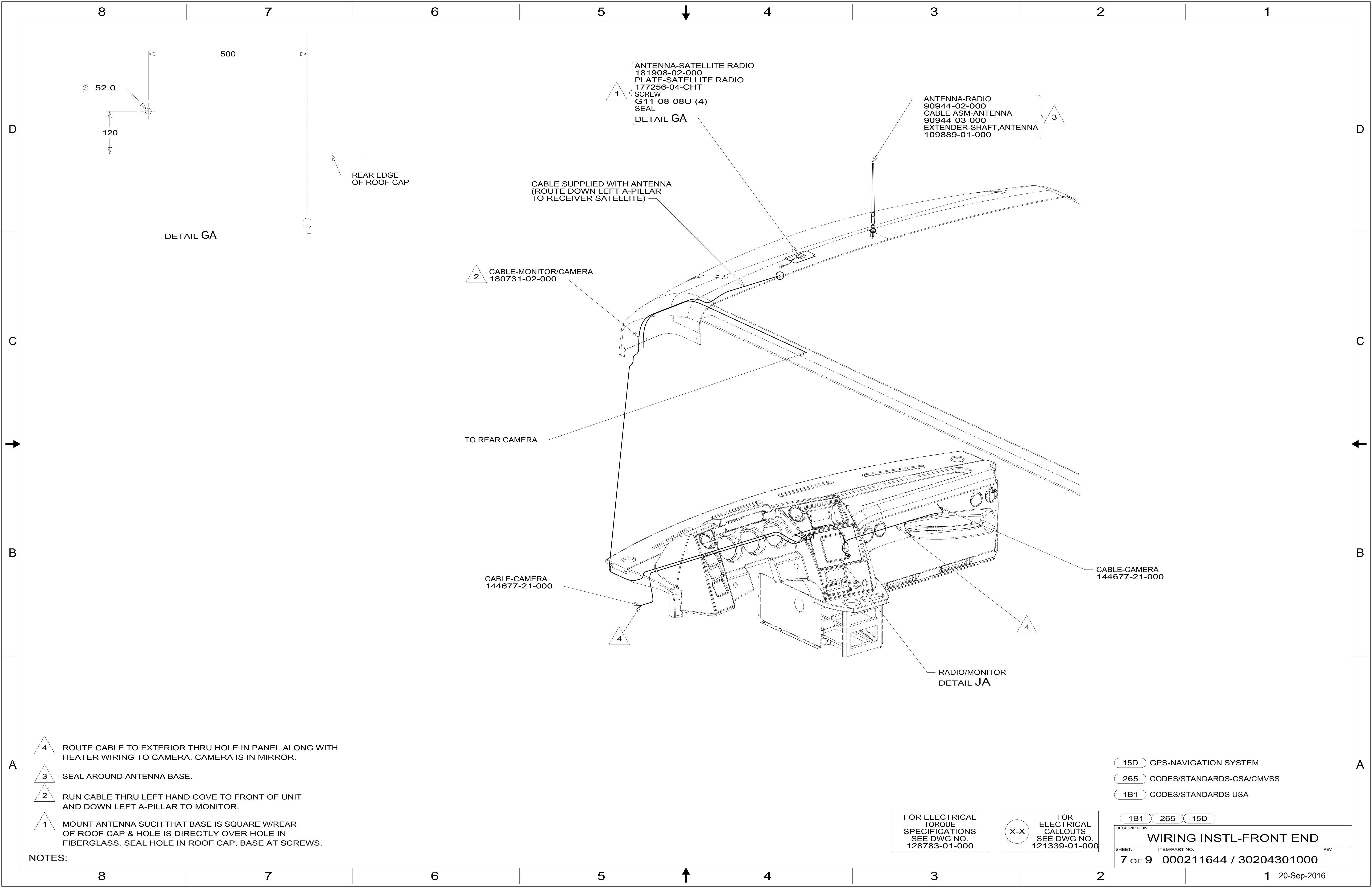
1B1 CODES/STANDARDS USA

FOR ELECTRICAL TORQUE SPECIFICATIONS SEE DWG NO. 128783-01-000

FOR ELECTRICAL CALLOUTS SEE DWG NO. 121339-01-000

1B1	265	
DESCRIPTION:		
WIRING INSTL-FRONT END		
SHEET:	ITEM/PART NO:	REV
6 OF 9	000211644 / 30204301000	

8 7 6 5 4 3 2 1 20-Sep-2016



1
 ANTENNA-SATELLITE RADIO
 181908-02-000
 PLATE-SATELLITE RADIO
 177256-04-CHT
 SCREW
 G11-08-08U (4)
 SEAL
 DETAIL GA

3
 ANTENNA-RADIO
 90944-02-000
 CABLE ASM-ANTENNA
 90944-03-000
 EXTENDER-SHAFT, ANTENNA
 109889-01-000

2
 CABLE-MONITOR/CAMERA
 180731-02-000

CABLE SUPPLIED WITH ANTENNA
 (ROUTE DOWN LEFT A-PILLAR
 TO RECEIVER SATELLITE)

TO REAR CAMERA

4
 CABLE-CAMERA
 144677-21-000

4
 CABLE-CAMERA
 144677-21-000

4
 RADIO/MONITOR
 DETAIL JA

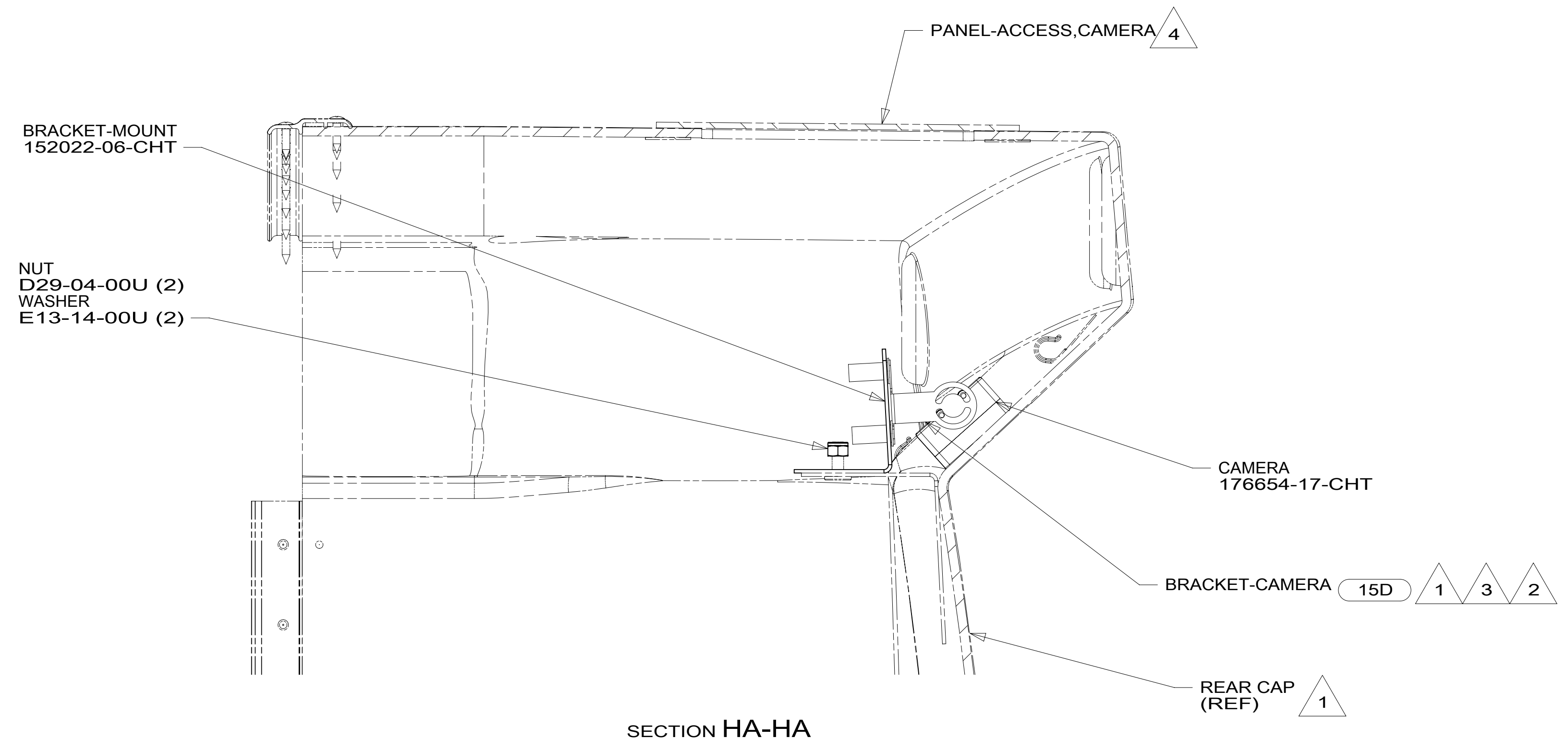
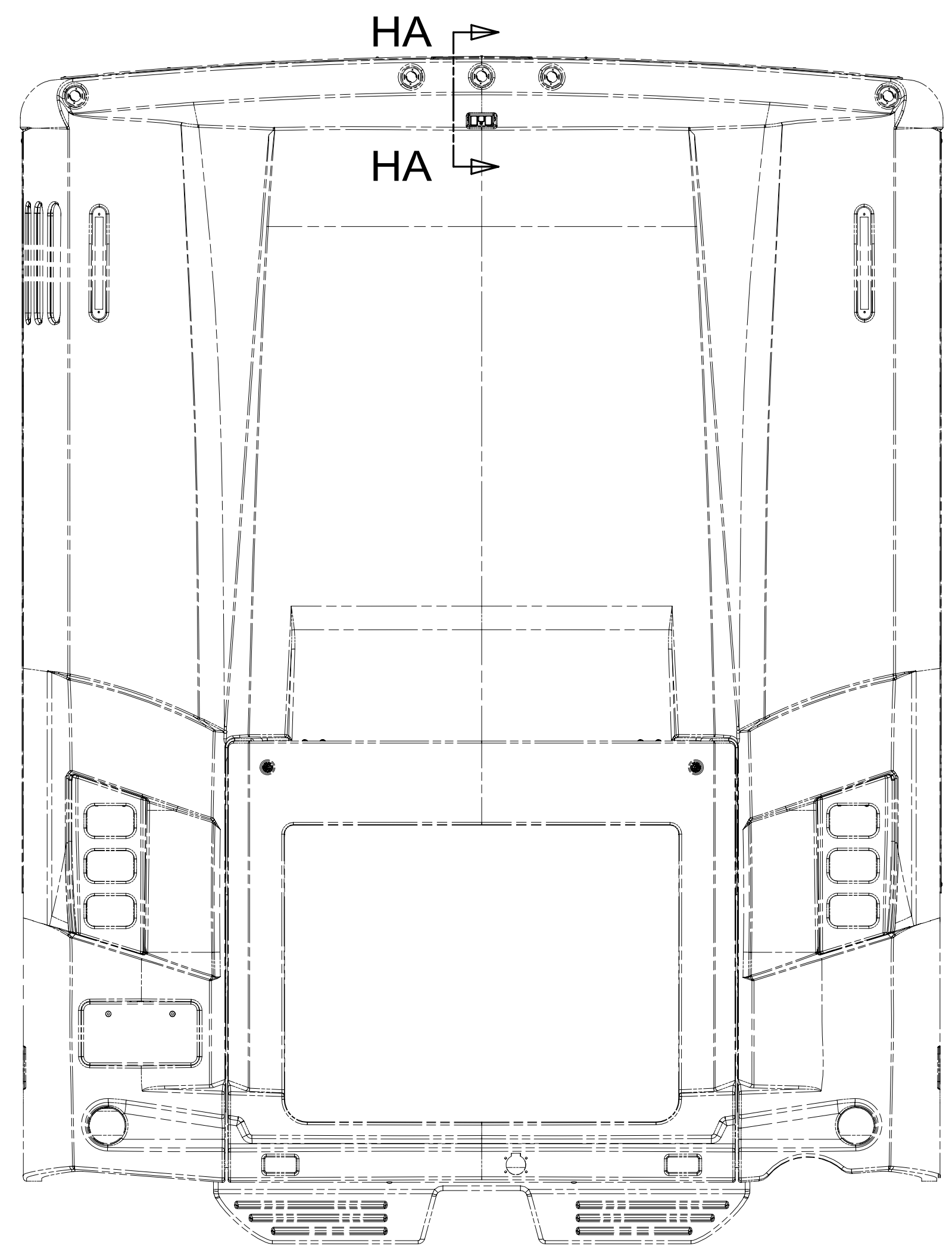
- NOTES:
- 4 ROUTE CABLE TO EXTERIOR THRU HOLE IN PANEL ALONG WITH HEATER WIRING TO CAMERA. CAMERA IS IN MIRROR.
 - 3 SEAL AROUND ANTENNA BASE.
 - 2 RUN CABLE THRU LEFT HAND COVE TO FRONT OF UNIT AND DOWN LEFT A-PILLAR TO MONITOR.
 - 1 MOUNT ANTENNA SUCH THAT BASE IS SQUARE W/REAR OF ROOF CAP & HOLE IS DIRECTLY OVER HOLE IN FIBERGLASS. SEAL HOLE IN ROOF CAP, BASE AT SCREWS.

- 15D GPS-NAVIGATION SYSTEM
- 265 CODES/STANDARDS-CSA/CMVSS
- 1B1 CODES/STANDARDS USA

FOR ELECTRICAL TORQUE SPECIFICATIONS SEE DWG NO. 128783-01-000

X-X
 FOR ELECTRICAL CALLOUTS SEE DWG NO. 121339-01-000

DESCRIPTION: WIRING INSTL-FRONT END		
1B1	265	15D
SHEET: 7 OF 9	ITEM/PART NO: 000211644 / 30204301000	REV



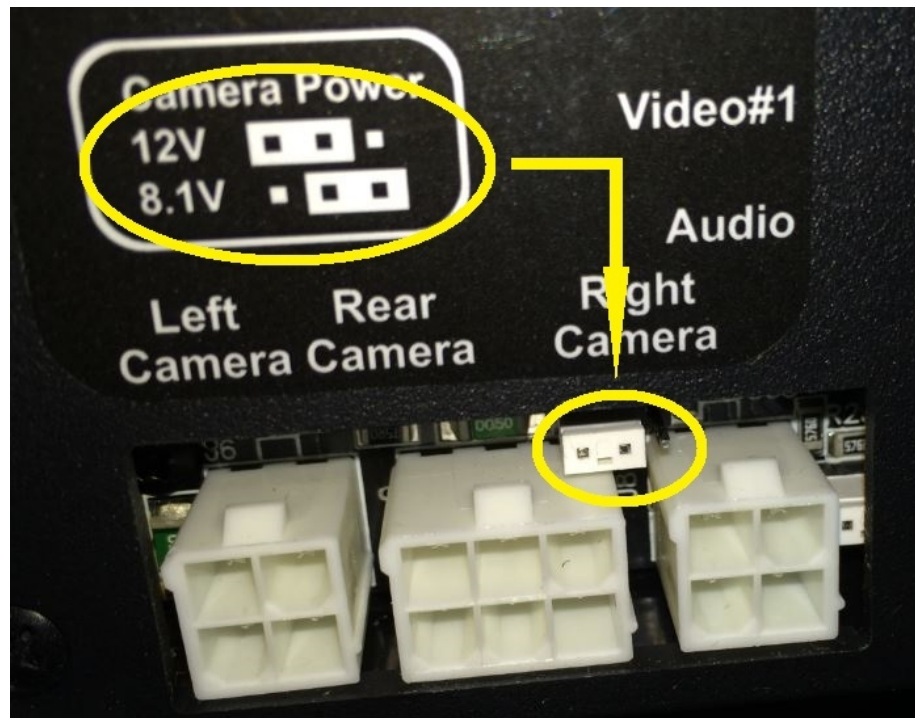
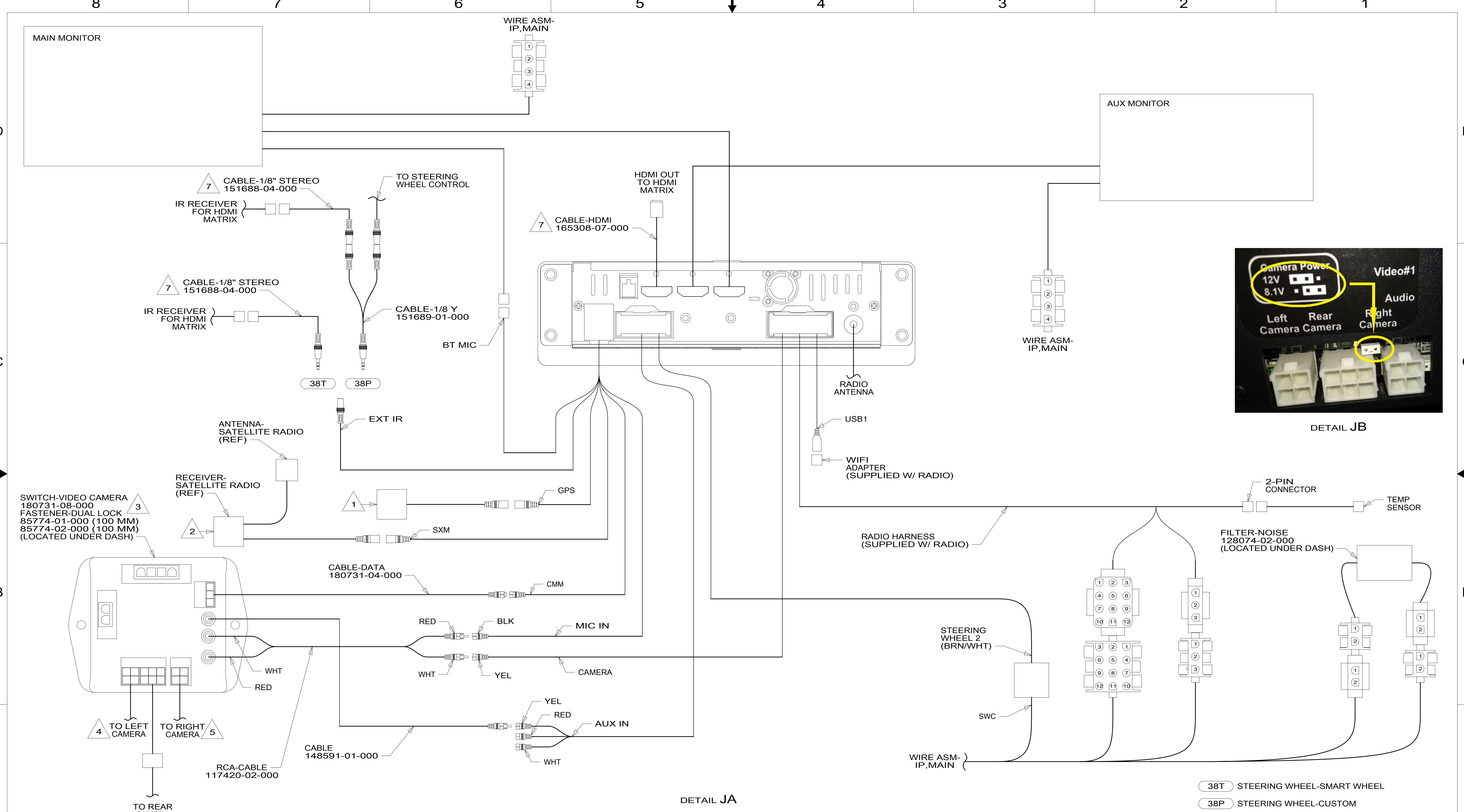
- NOTES:
- 4 SEE PANEL-REAR CAP FOR LOCATION.
 - 3 ALIGN CAMERA IN CENTER OF OPENING AND ADJUST CAMERA VIEWING SO BACKWALL IS JUST VISIBLE IN MONITOR.
 - 2 APPLY TAPE 180131-01-CHT TO SEAL CAMERA CONNECTOR, THEN COVER WITH TAPE 8363-01-000 WITH 15D
 - 1 PARTS SUPPLIED WITH REAR CAMERA

- 15D INFOTAINMENT CENTER/GPS
- 265 CODES/STANDARDS-CSA/CMVSS
- 1B1 CODES/STANDARDS USA

FOR ELECTRICAL TORQUE SPECIFICATIONS SEE DWG NO. 128783-01-000

FOR ELECTRICAL CALLOUTS SEE DWG NO. 121339-01-000

DESCRIPTION:	
WIRING INSTL-FRONT END	
SHEET:	ITEM/PART NO. REV
8 OF 9	000211644 / 30204301000



DETAIL JB

DETAIL JA

- NOTES:
- 3 ENSURE CAMERA POWER JUMPER IS IN 12 VOLT POSITION. MOVE TO 12 VOLT POSITION IF NECESSARY. SEE DEAL HB.
 - 2 WIRE TIE RECEIVER-SATELLITE RADIO AND SWITCH-VIDEO CAMERA TO DASH RADIO WIRING BEHIND THE RADIO.
 - 1 MOUNT TO DEFROST PLENUM NEAR WINDSHIELD.

- 7 ROUTE UP RIGHT A-POST.
- 6. APPLY TAPE 8363-01-000 AS NECESSARY TO SECURE NON-LOCKING CONNECTIONS.
- 5 MARK LEFT CABLE WITH WHITE TAPE 900000-08-000 NEXT TO CONNECTOR.
- 4 MARK LEFT CABLE WITH YELLOW TAPE 900000-07-000 NEXT TO CONNECTOR.

- 38T STEERING WHEEL-SMART WHEEL
- 38P STEERING WHEEL-CUSTOM
- 15D GPS-NAVIGATION SYSTEM
- 265 CODES/STANDARDS-CSA/CMVSS
- 1B1 CODES/STANDARDS USA

FOR ELECTRICAL TORQUE SPECIFICATIONS SEE DWG NO. 128783-01-000

FOR ELECTRICAL CALLOUTS SEE DWG NO. 121339-01-000

DESCRIPTION:	1B1 265 15D	
WIRING INSTL-FRONT END		
SHEET:	ITEM/PART NO:	REV
9 OF 9	000211644 / 30204301000	