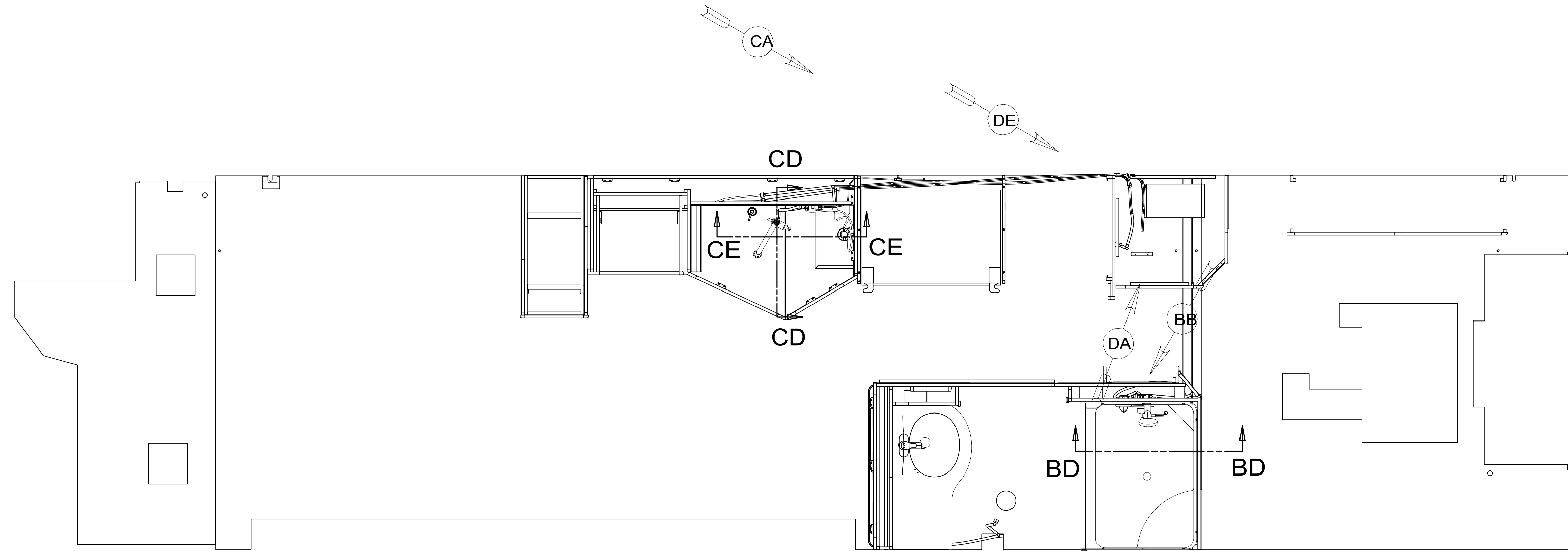


REV	ZONE	REVISION RECORD	DATE	DFTR-ORIG
A	---	INITIAL RELEASE	11/04/15	3650
B	---	ADD NUMBER ON SER. CTR SHTT5	11-5-15	1600-1600



12. FOR INSTALLATION USE SILICON ADHESIVE 131264-05-CHT. APPLY ON TOP OF PLATE, PLACE COVER ON, AND POT ADHESIVE AROUND COVER.

11. VALVE MUST REMAIN OPEN AFTER WATER TEST.

10. INSTALL FAUCET W/OUT BASEPLATE.

9. ELBOW TO BE TURN 45° BELOW HORIZONTAL LINE.

8. ALL CRIMP FITTINGS TO 1/2" PEX TUBING REQUIRE 1/2" CLAMP 140171-03-000.

7. ALL CRIMP FITTINGS TO 5/8" PEX TUBING REQUIRE 5/8" CLAMP 140171-04-000.

6. LABEL HOT AND COLD SUPPLY TUBES AND TAPE FITTING TO TUBE BEFORE CABINET SET TO PREVENT MOVEMENT.

5. ADD PIPE WRAP (LADDER SCRAP 110157-02-000) INSULATION.

4. ADD TEFLON TAPE 010405-02-000.

3. ALL TUBING TO BE SECURED AT 1200 INTERVALS MAXIMUM WITH CLAMP 010495-01-000 AND SCREW 000G67-10-12U OR EQUIVALENT.

2. TUBING TO BE INSTALLED WITH SUFFICIENT SLOPE TO PROVIDE DRAINAGE TO NEAREST VALVE.

1. PLASTIC FITTINGS TO BE SEALED WITH SEALANT 084456-01-000.

NOTES:

- (1B2) WTR HTR-10GAL/ELEC/LP/MTR AID
- (1BT) WATER HEATER, TANKLESS
- (21M) WASHER/DRYER PREP
- (21S) WASHER & DRYER-PAIR
- (15L) REFR/FRZR 2DOOR RESIDENTIAL
- (79W) REFRIGERATOR-4 DOOR
- (WIN) WINNEBAGO ONLY
- (ITA) ITASCA ONLY

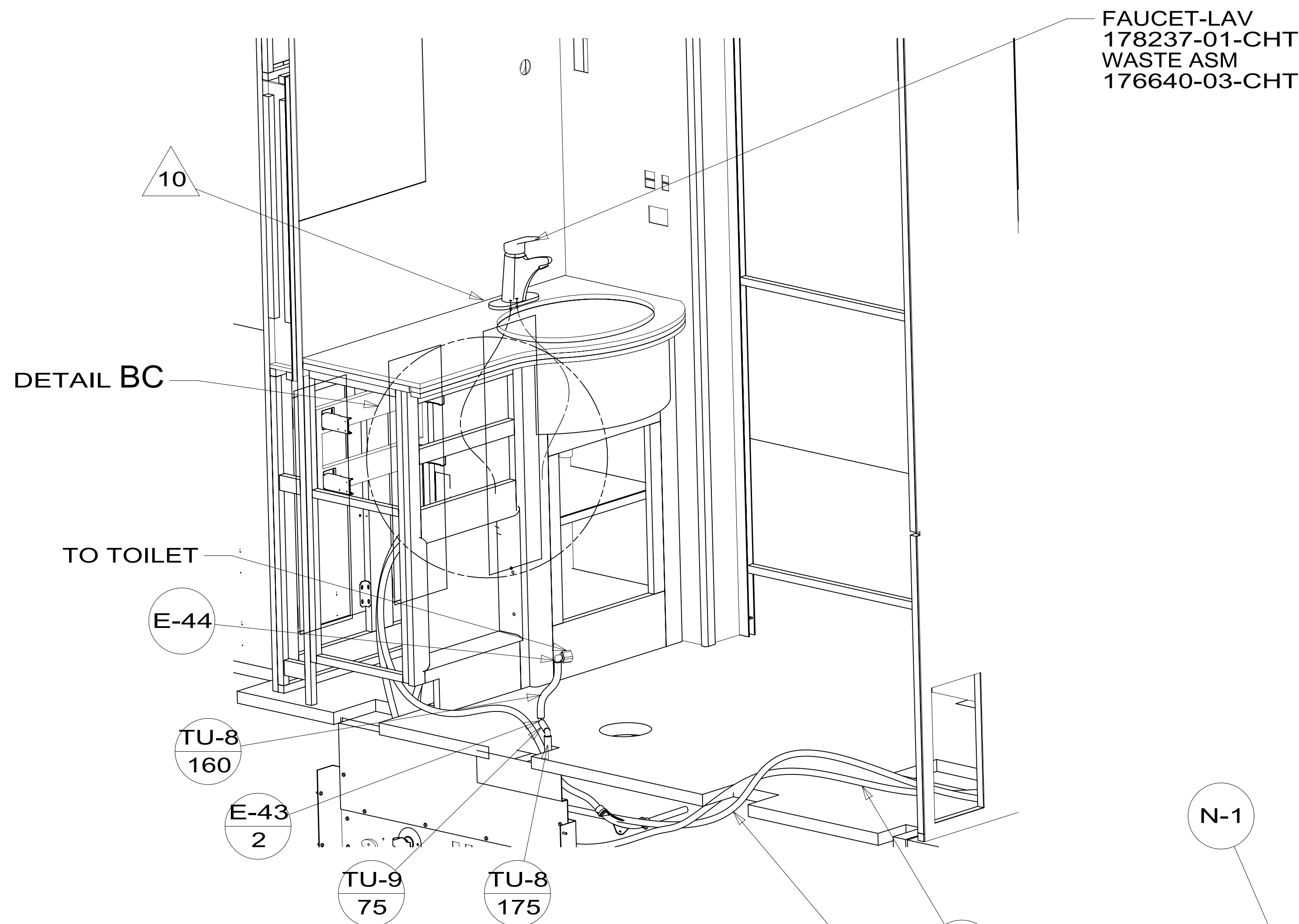


DSNR:		ALL DIMENSIONS ARE IN MILLIMETERS	
DFTR:		MATERIAL:	
UNSPECIFIED TOLERANCES:			
WHOLE DIM (X)	3		
ONE-PLACE (X.X)	1.5		
TWO-PLACE (X.XX)	0.50		
ANGLE	1°		
REFER TO ES0018 FOR FASTENER TIGHTENING GUIDELINES		WEIGHT: (LBS)	FIRST USED: (REF)
DESCRIPTION: WATER SYSTEM INSTL			
SHEET: 1 OF 5	ITEM/PART NO: 000211640 / 30203701000	REV:	
REF:		1 01-Feb-2017	

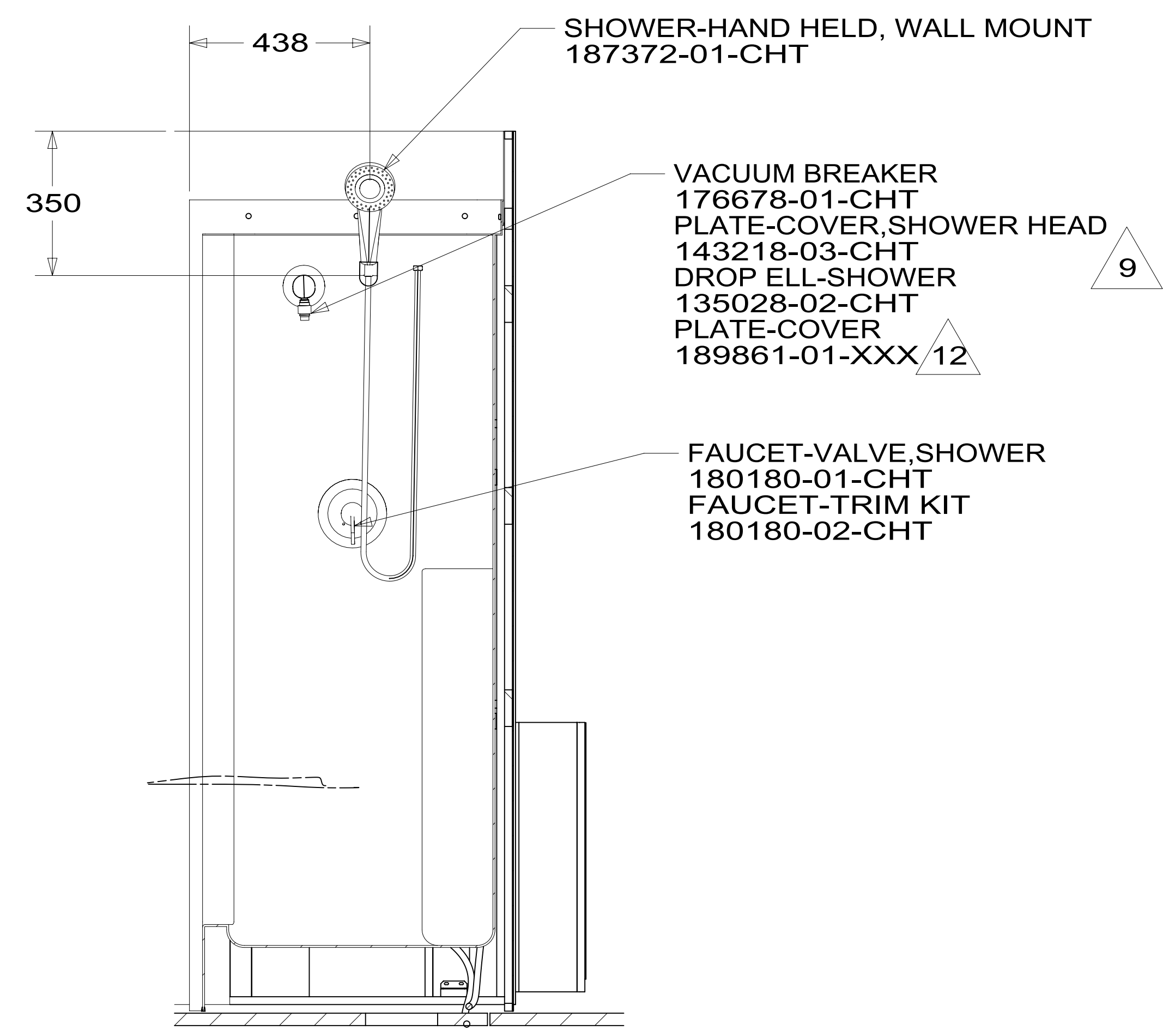
X-X
FOR WATER CALLOUTS SEE DWG NO. 116230-01-000

*302037 *A

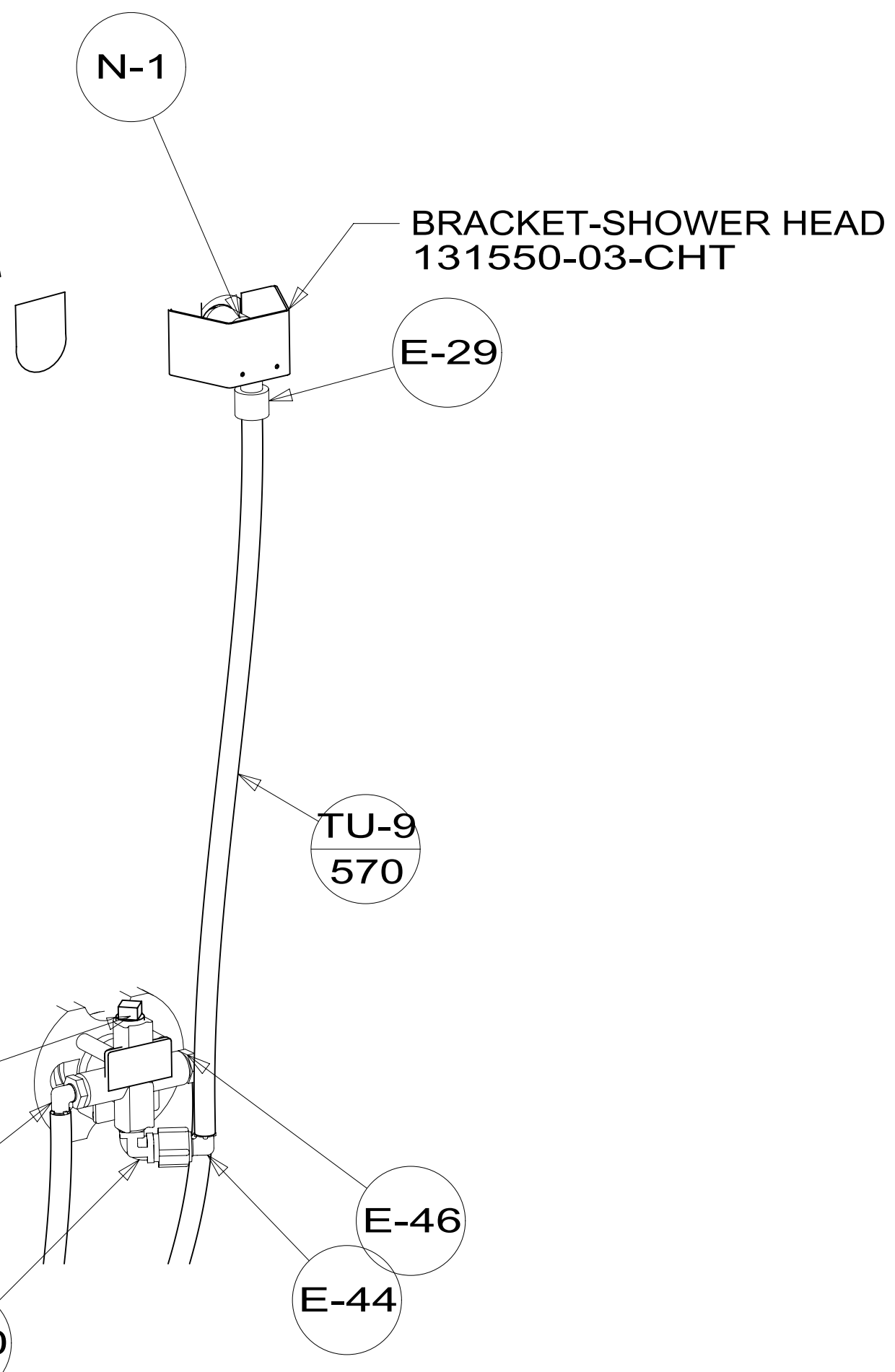
8 7 6 5 4 3 2 1



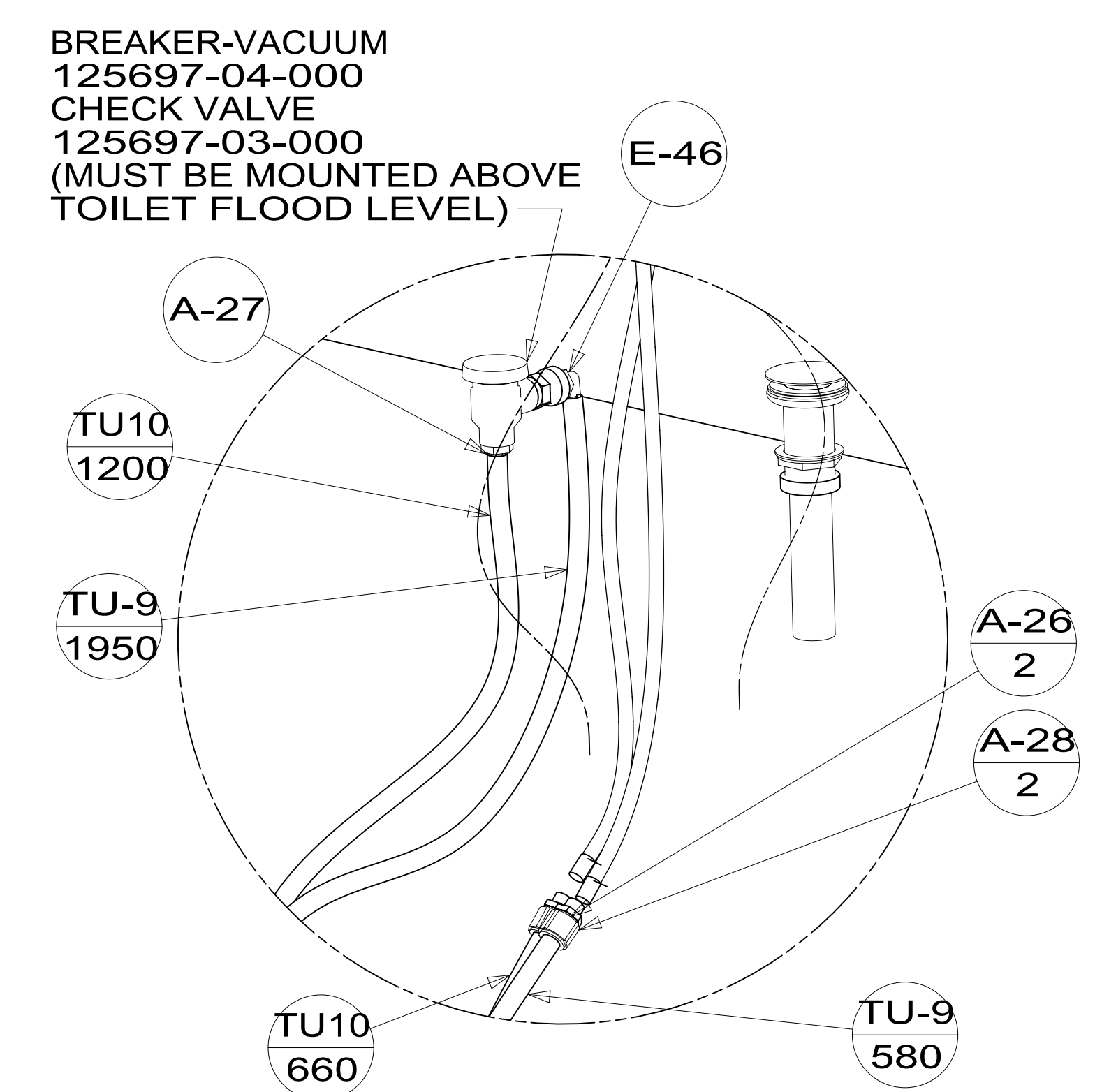
VIEW BA



SECTION BD-BD



VIEW BB
(SHOWN W/OUT CABINETS)

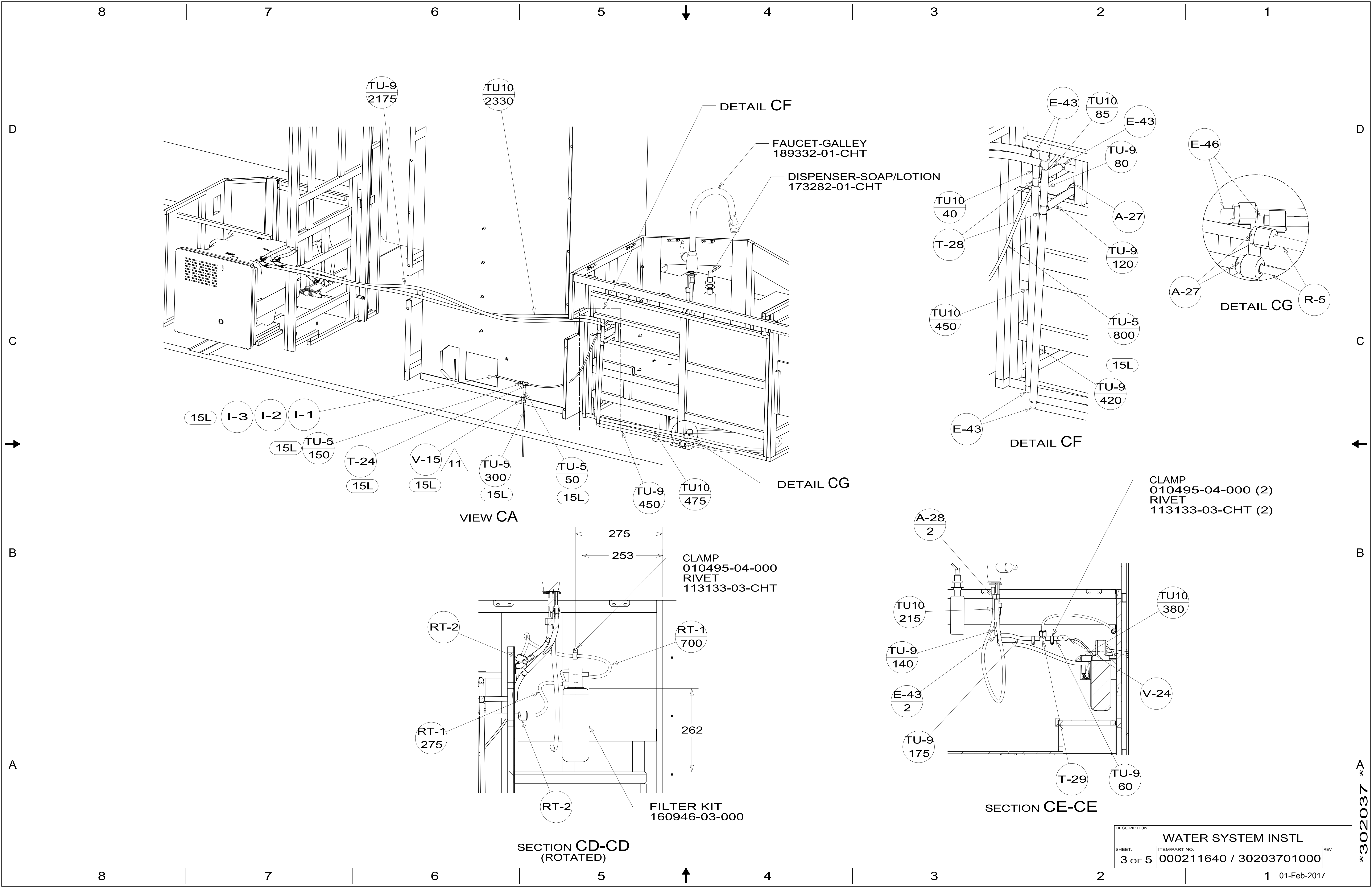


DETAIL BC
(SHOWN W/OUT CABINETS)

DESCRIPTION:		
WATER SYSTEM INSTL		
SHEET:	ITEM/PART NO.:	REV
2 OF 5	000211640 / 30203701000	

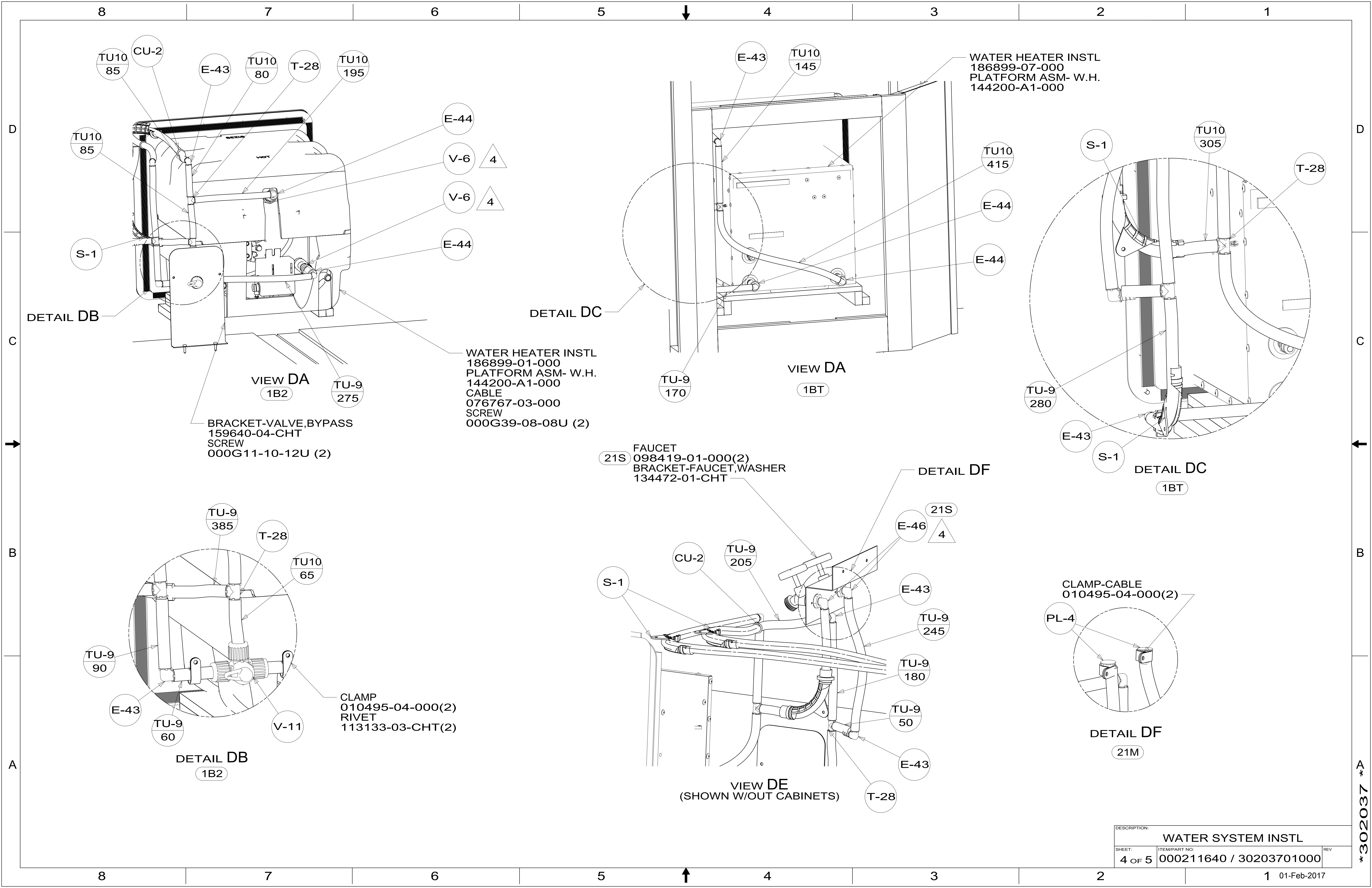
8 7 6 5 4 3 2 1 01-Feb-2017

302037



DESCRIPTION:		
WATER SYSTEM INSTL		
SHEET:	ITEM/PART NO.:	REV
3 OF 5	000211640 / 30203701000	

302037



DETAIL DB

VIEW DA
1B2

BRACKET-VALVE,BYPASS
159640-04-CHT
SCREW
000G11-10-12U (2)

WATER HEATER INSTL
186899-01-000
PLATFORM ASM- W.H.
144200-A1-000
CABLE
076767-03-000
SCREW
000G39-08-08U (2)

DETAIL DC

VIEW DA
1BT

WATER HEATER INSTL
186899-07-000
PLATFORM ASM- W.H.
144200-A1-000

DETAIL DC
1BT

21S FAUCET
098419-01-000(2)
BRACKET-FAUCET,WASHER
134472-01-CHT

DETAIL DF

VIEW DE
(SHOWN W/OUT CABINETS)

CLAMP-CABLE
010495-04-000(2)

DETAIL DF
21M

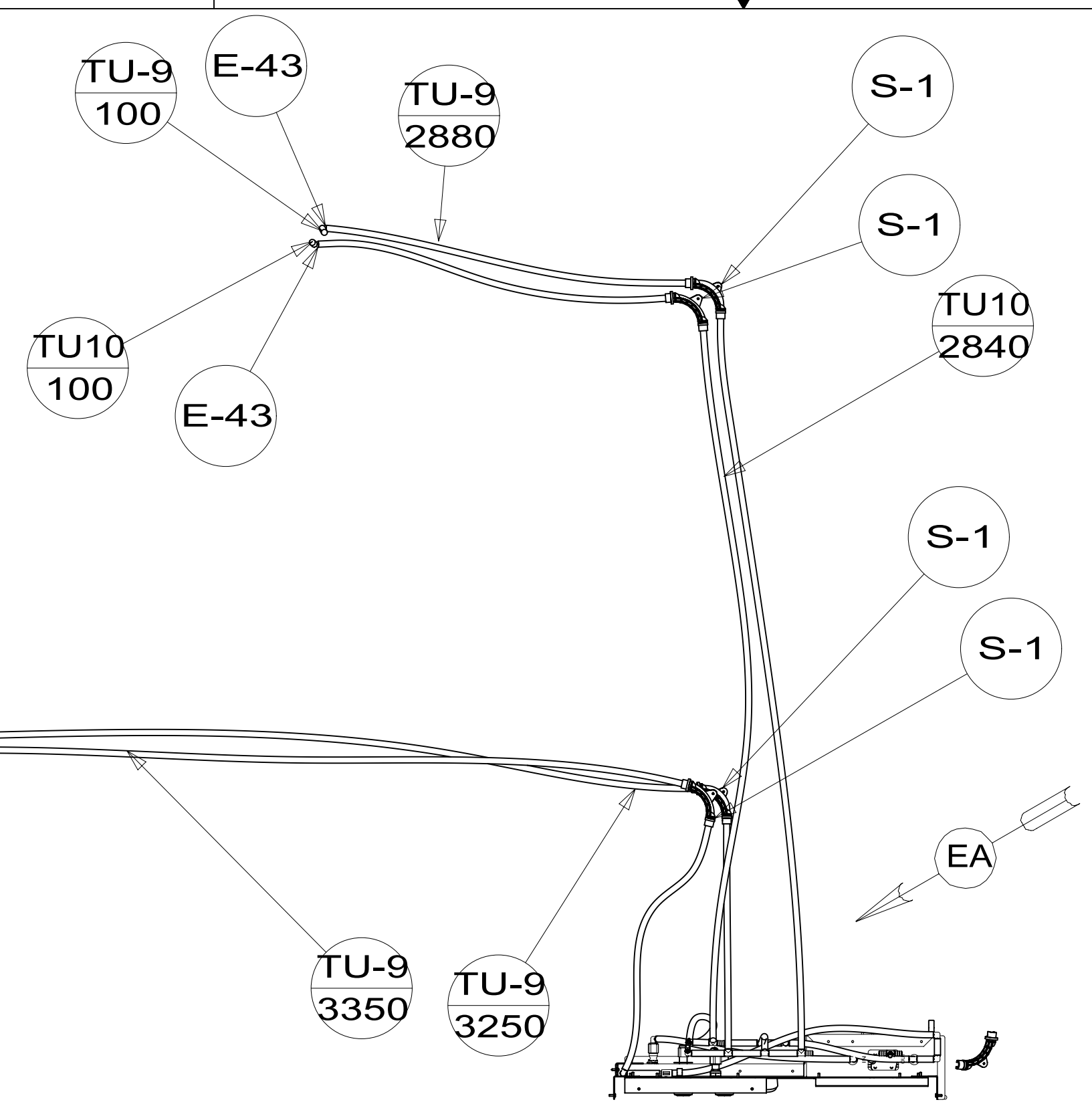
DESCRIPTION:		
WATER SYSTEM INSTL		
SHEET:	ITEM/PART NO:	REV
4 OF 5	000211640 / 30203701000	

*302037

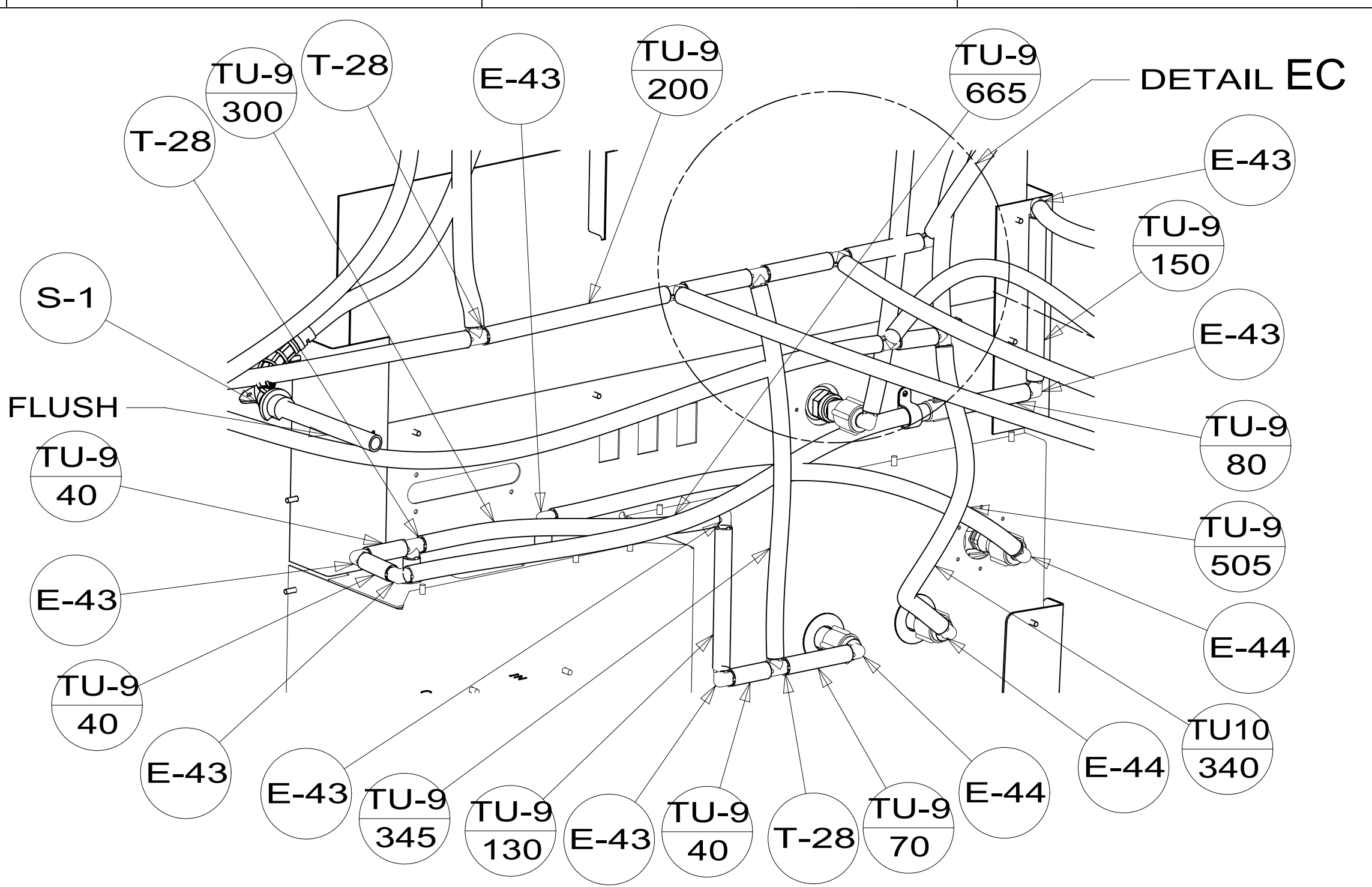
8 7 6 5 4 3 2 1

WATER PUMP CENTER ASM
182945-01-XXX

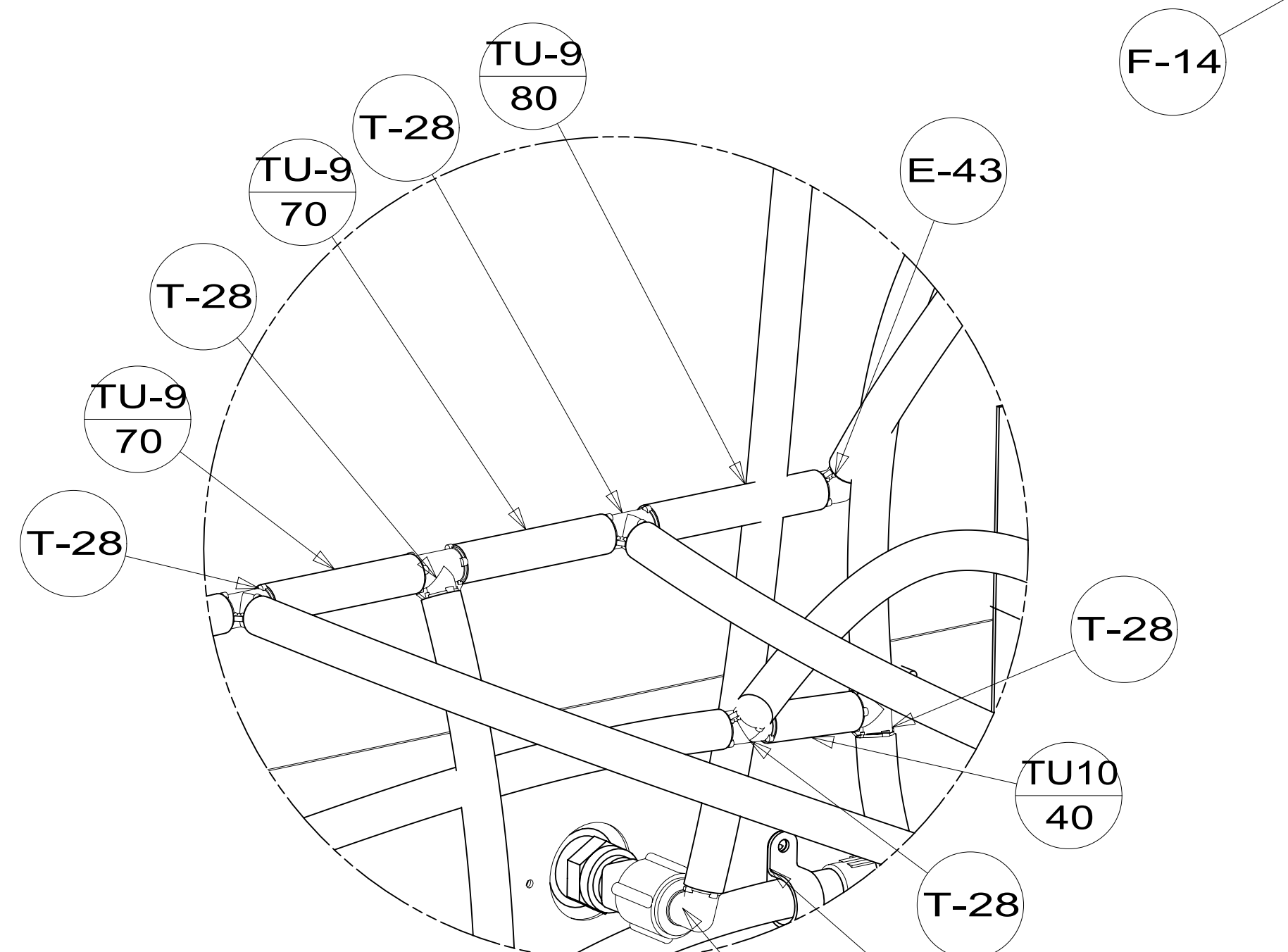
TOP VIEW SHOWING LINE UNDER FLOOR



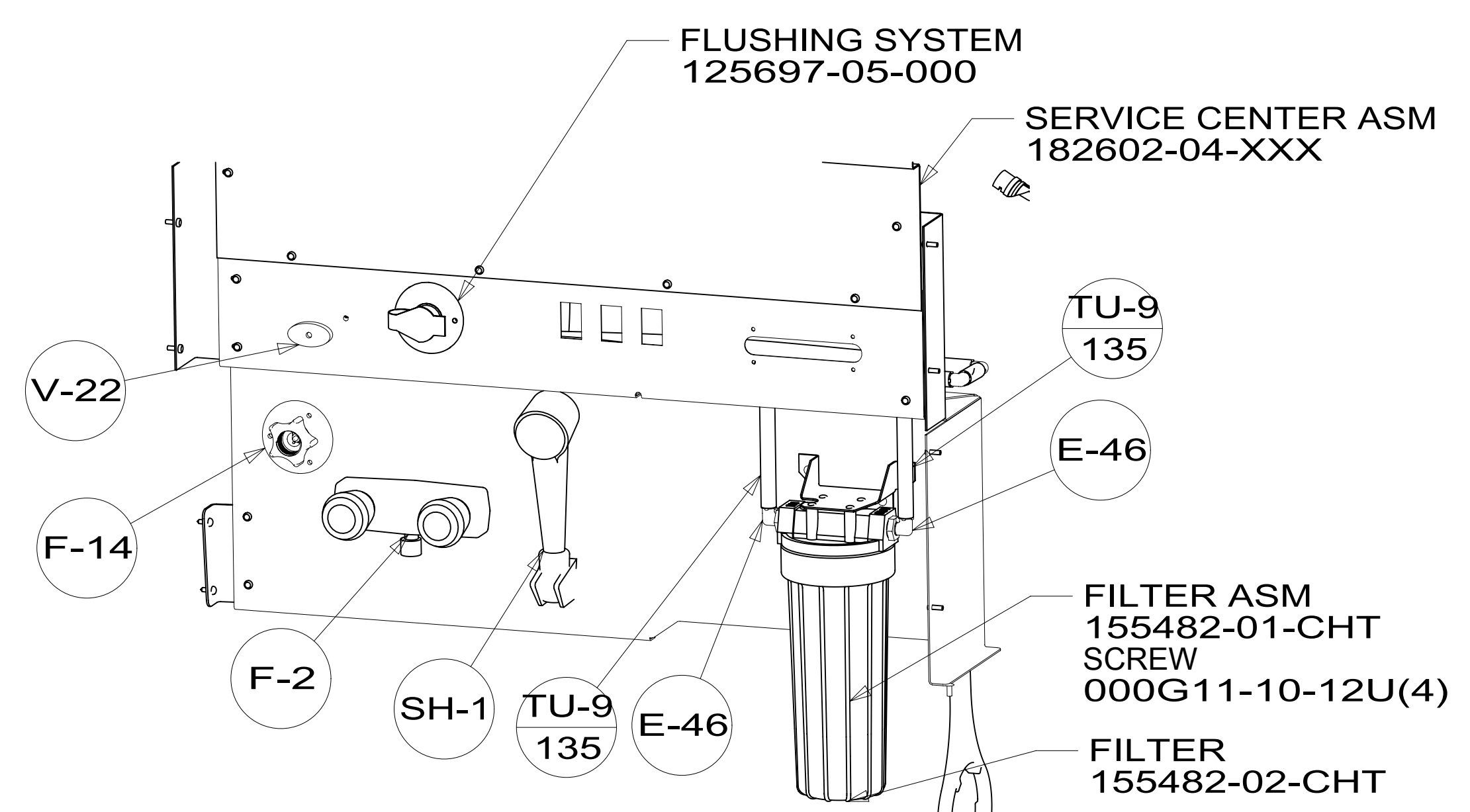
TO TANK FLUSH



VIEW EA



DETAIL EC
CLAMP
010495-04-000
RIVET
113133-03-CHT



VIEW EB

DESCRIPTION:		
WATER SYSTEM INSTL		
SHEET:	ITEM/PART NO:	REV
5 OF 5	000211640 / 30203701000	

8 7 6 5 4 3 2 1 01-Feb-2017

302037