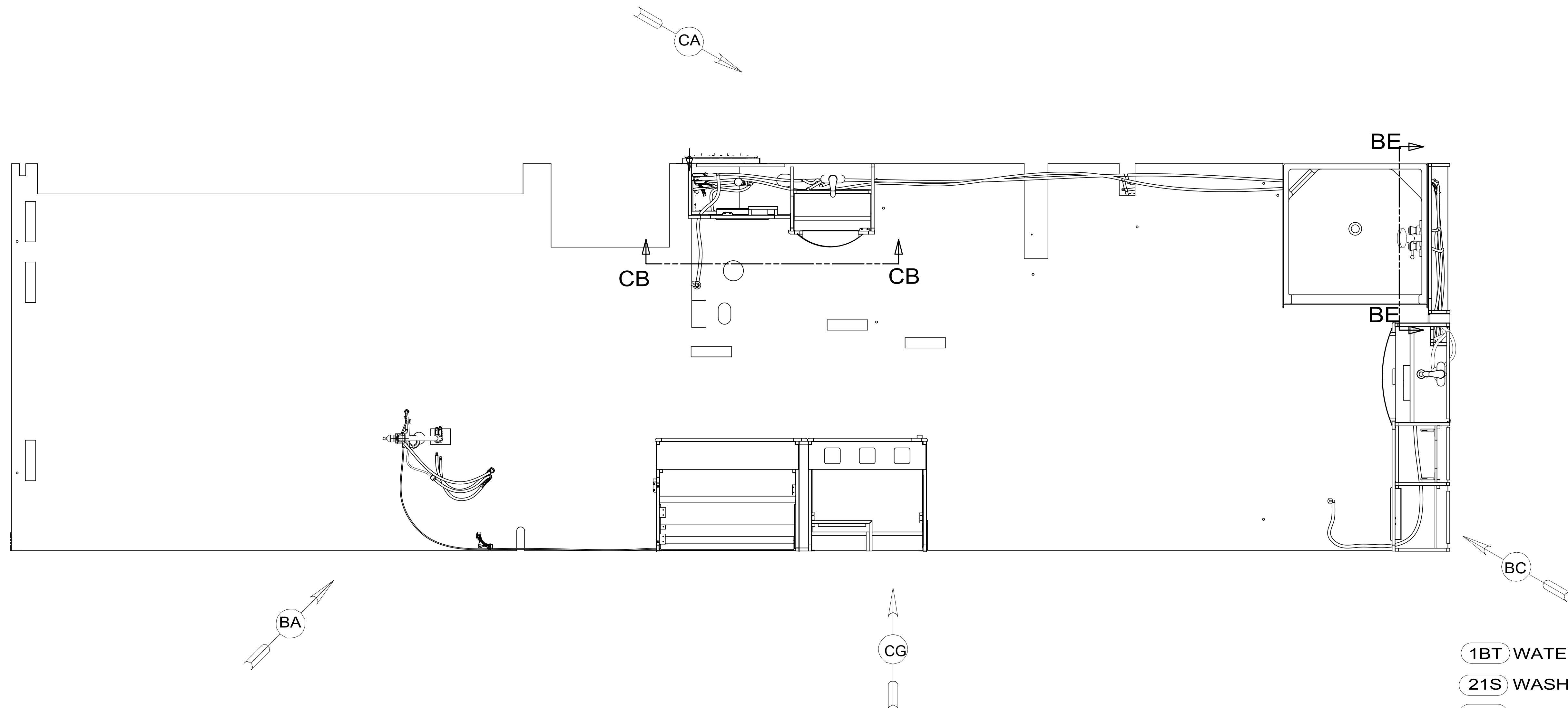


REV	ZONE	REVISION RECORD	DATE	DFTR-ORIG
A	---	INITIAL RELEASE	11/03/15	3660
B	---	REPL TANK SHT4	3-7-16	1600-3508



- 1BT WATER HEATER, TANKLESS
- 21S WASHER & DRYER-PAIR
- 21M WASHER/DRYER PREP
- 79W REFRIGERATOR-4 DOOR
- 15L RESIDENTIAL REFRIGERATOR PKG
- 1B2 WTR HTR-10 GAL/ELEC/LP/MTRAIID
- 53E WATER SYS WINTERIZATION PKG

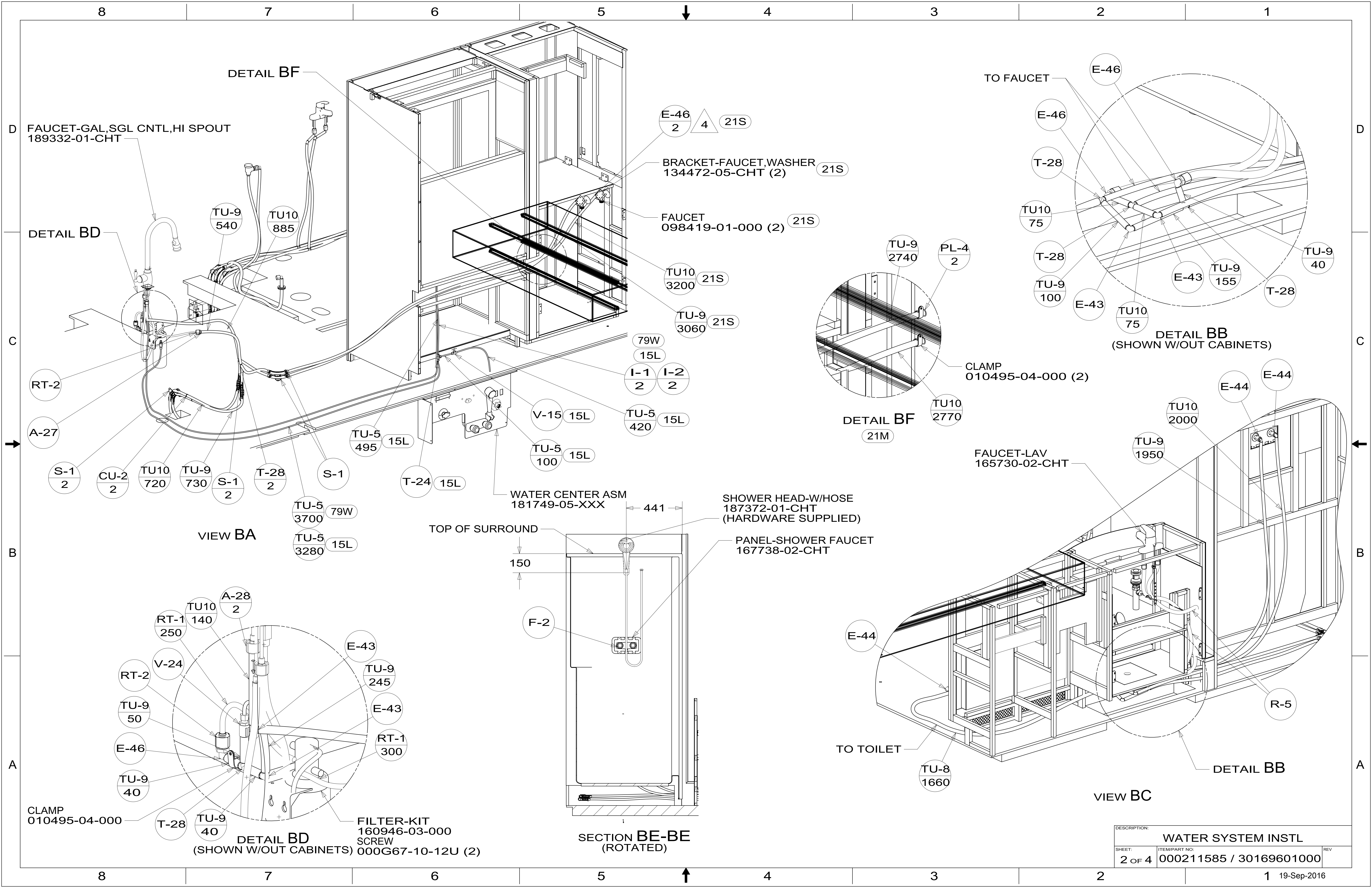
- NOTES:
9. ALL CRIMP FITTINGS TO 3/4" PEX TUBING REQUIRE 3/4" CLAMP 140171-05-000.
 8. ALL CRIMP FITTINGS TO 1/2" PEX TUBING REQUIRE 1/2" CLAMP 140171-03-000.
 7. ALL CRIMP FITTINGS TO 5/8" FLEX TUBING REQUIRE 5/8" CLAMP 140171-04-000.
 - 6 LABEL HOT AND COLD SUPPLY TUBES AND TAPE FITTING TO TUBE BEFORE CABINET SET TO PREVENT MOVEMENT.
 - 5 ADD PIPE WRAP (LADDER SCRAP 110157-02-000) INSULATION.
 - 4 ADD TEFLON TAPE 010405-02-000.
 3. ALL TUBING TO BE SECURED AT 1200 INTERVALS MAXIMUM WITH CLAMP 010495-01-000 AND SCREW 000G67-10-12U OR EQUIVALENT.
 2. TUBING TO BE INSTALLED WITH SUFFICIENT SLOPE TO PROVIDE DRAINAGE TO NEAREST VALVE.
 1. PLASTIC FITTINGS TO BE SEALED WITH SEALANT 084456-01-000.

X-X

FOR
WATER
CALLOUTS
SEE DWG NO.
000209446 /
303369-01-000

COPYRIGHT 2016 WINNEBAGO INDUSTRIES, INC.

DSNR:		ALL DIMENSIONS ARE IN MILLIMETERS	
DFTR:			
UNSPECIFIED TOLERANCES:		MATERIAL:	
WHOLE DIM (X)	3		
ONE-PLACE (X.X)	1.5		
TWO-PLACE (X.XX)	0.50		
ANGLE	1°		
REFER TO ES0018 FOR FASTENER TIGHTENING GUIDELINES		WEIGHT: (LBS)	FIRST USED: (REF)
			16 J37F
DESCRIPTION:			
WATER SYSTEM INSTL			
SHEET:	ITEM/PART NO.:	REV	
1 OF 4	000211585 / 30169601000		
REF:		1 19-Sep-2016	



FAUCET-GAL,SGL CNTL,HI SPOUT
189332-01-CHT

DETAIL BD

DETAIL BF

E-46
2 4 21S

BRACKET-FAUCET,WASHER
134472-05-CHT (2) 21S

FAUCET
098419-01-000 (2) 21S

TU10
3200 21S

TU-9
3060 21S

79W
15L

I-1
2 I-2
2

TU-5
420 15L

TU-5
100 15L

WATER CENTER ASM
181749-05-XXX

SHOWER HEAD-W/HOSE
187372-01-CHT
(HARDWARE SUPPLIED)

PANEL-SHOWER FAUCET
167738-02-CHT

TO FAUCET

E-46

T-28

TU10
75

T-28

TU-9
100

E-43

TU10
75

E-43

TU-9
155

T-28

TU-9
40

DETAIL BB
(SHOWN W/OUT CABINETS)

CLAMP
010495-04-000 (2)

DETAIL BF
21M

PL-4
2

TU-9
2740

TU10
2770

FAUCET-LAV
165730-02-CHT

TU-9
1950

TU10
2000

E-44

E-44

RT-2

A-27

S-1
2

CU-2
2

TU10
720

TU-9
730

S-1
2

T-28
2

S-1

TU-5
495 15L

T-24 15L

TU-5
3700 79W

TU-5
3280 15L

VIEW BA

TOP OF SURROUND

150

F-2

SECTION BE-BE
(ROTATED)

TO TOILET

TU-8
1660

E-44

DETAIL BB

R-5

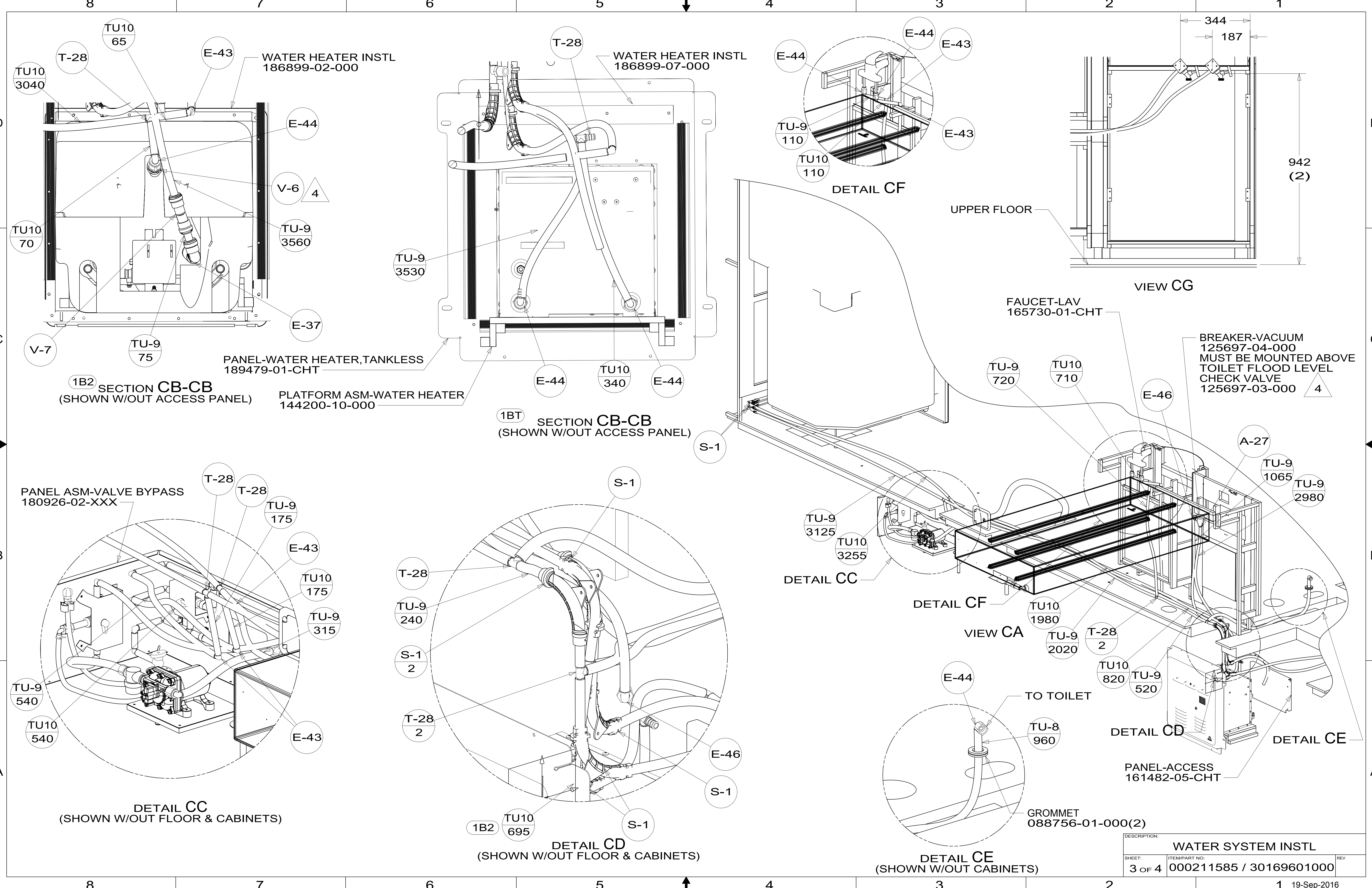
VIEW BC

CLAMP
010495-04-000

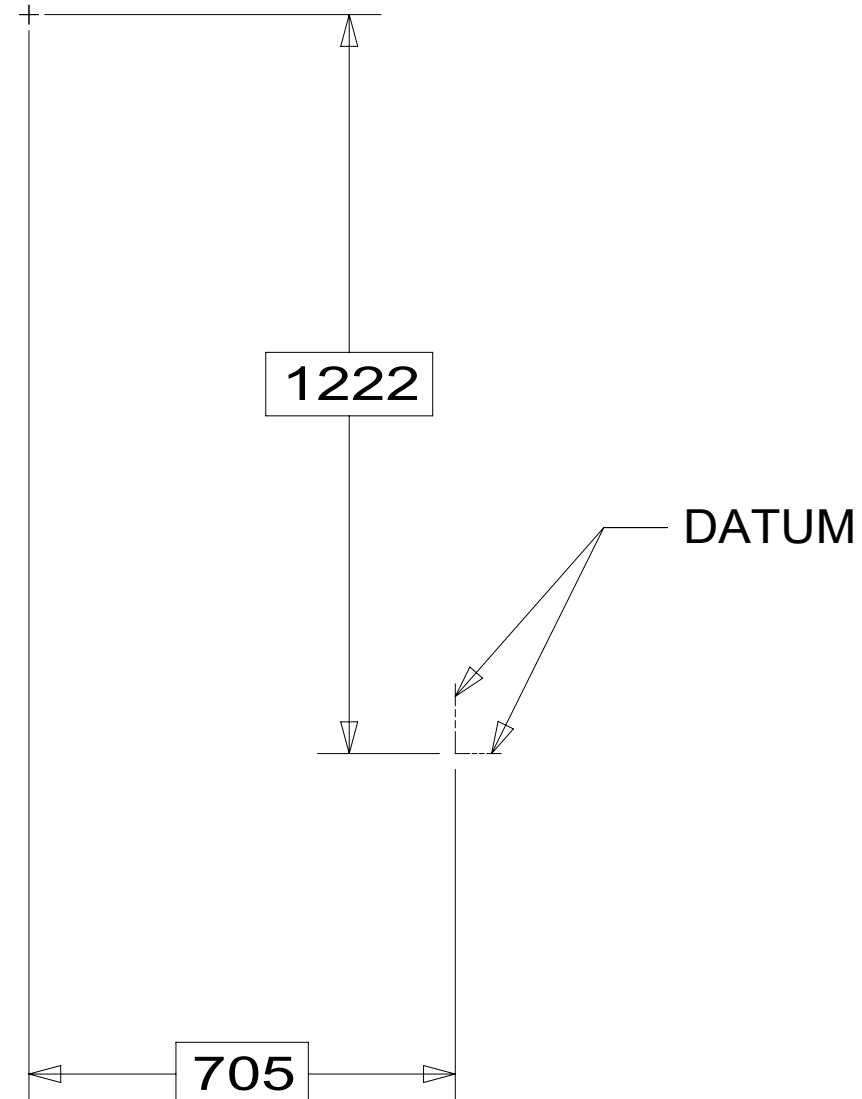
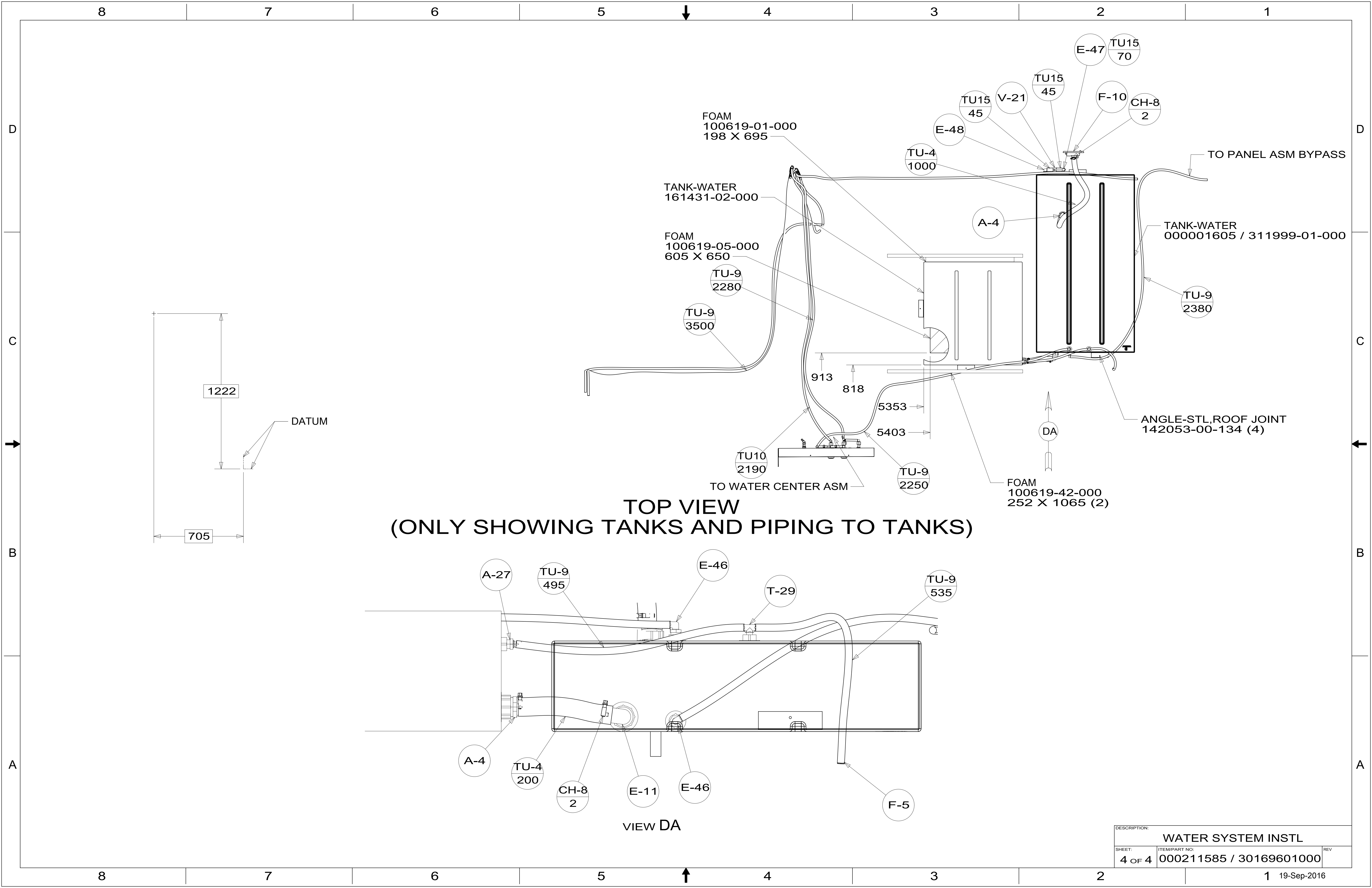
DETAIL BD
(SHOWN W/OUT CABINETS)

FILTER-KIT
160946-03-000
SCREW
000G67-10-12U (2)

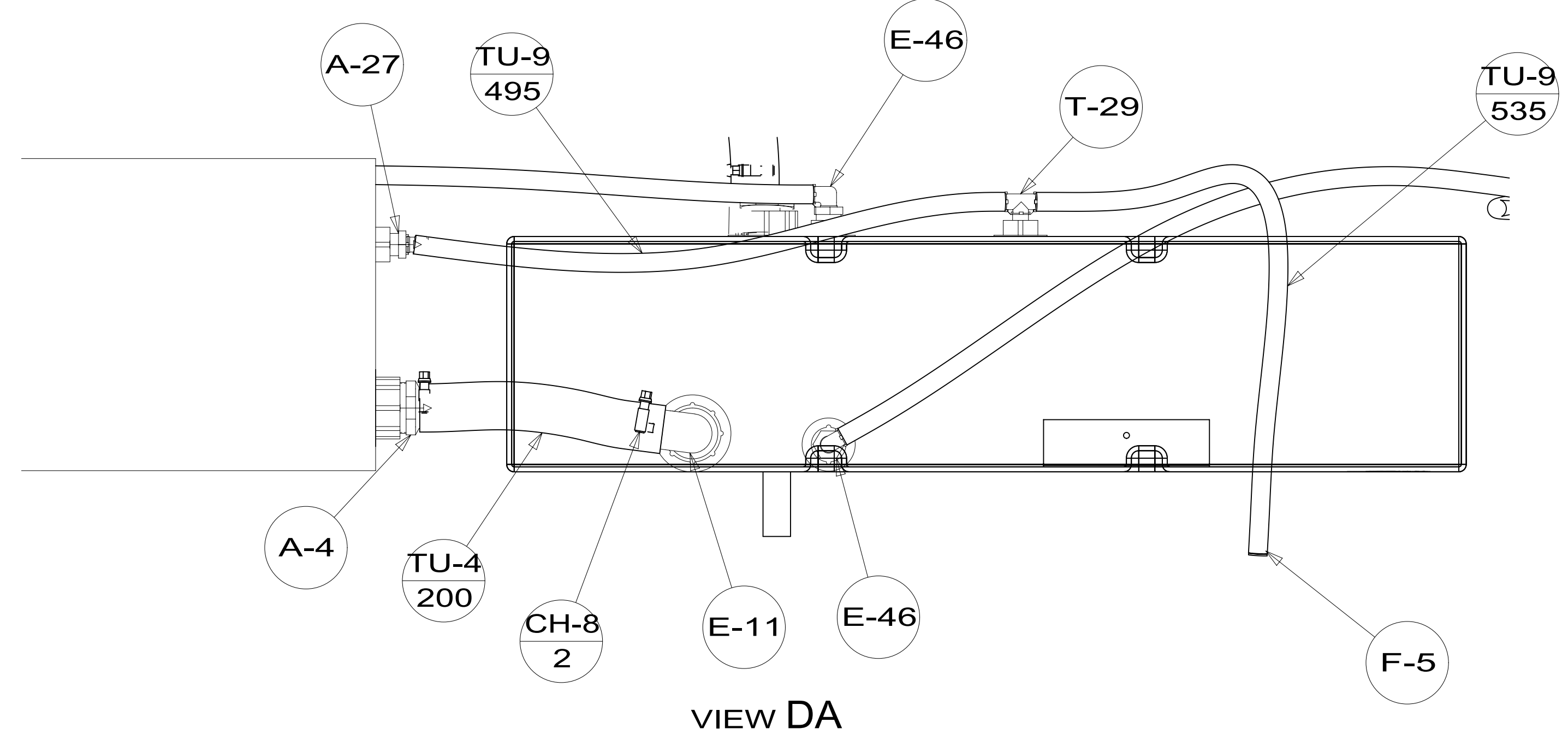
DESCRIPTION:		
WATER SYSTEM INSTL		
SHEET:	ITEM/PART NO.:	REV
2 OF 4	000211585 / 30169601000	
19-Sep-2016		



DESCRIPTION:		
WATER SYSTEM INSTL		
SHEET:	ITEM/PART NO:	REV
3 OF 4	000211585 / 30169601000	
		19-Sep-2016



**TOP VIEW
(ONLY SHOWING TANKS AND PIPING TO TANKS)**



DESCRIPTION:		
WATER SYSTEM INSTL		
SHEET:	ITEM/PART NO.:	REV
4 OF 4	000211585 / 30169601000	