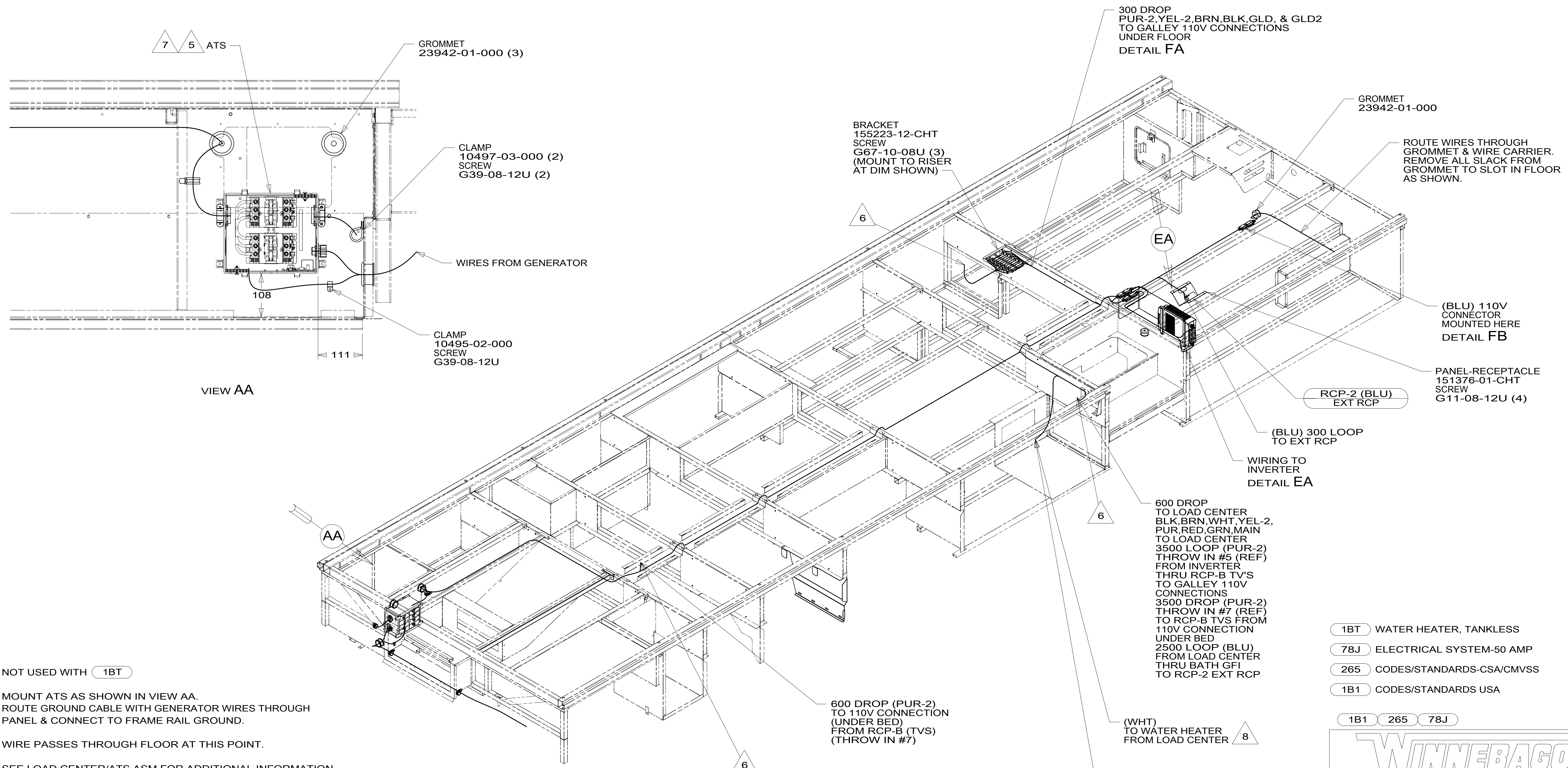


DRAWING NO.	FEATURE
301665-01	-----
301665-12	1B1 78J
301665-16	265 78J



- 8 NOT USED WITH 1BT
- 7 MOUNT ATS AS SHOWN IN VIEW AA. ROUTE GROUND CABLE WITH GENERATOR WIRES THROUGH PANEL & CONNECT TO FRAME RAIL GROUND.
- 6 WIRE PASSES THROUGH FLOOR AT THIS POINT.
- 5 SEE LOAD CENTER/ATS ASM FOR ADDITIONAL INFORMATION.
- 4. SEE WIRING DIAGRAM-BODY, 110V FOR ADDITIONAL INFORMATION.
- 3. ALL GROUND WIRE TO BE COVERED WITH TUBING 8041-02-000.
- 2. ALL 110V WIRE TO BE CLAMPED WITH CLAMP 10497-05-000 WITHIN 200MM OF OUTLET BOXES, USE SCREW G67-10-12U.
- 1. AT MINIMUM ALL WIRES TO BE SUPPORTED AND SECURED PER CODE REQUIREMENTS. USE CLAMP 10495 OR 10497 OR WIRE TIE 8343 OR 108046 AND SCREW G67-XX-XXX OR G56-XX-XXX AS APPROPRIATE FOR INSTALLATION.

NOTES:

- 1BT WATER HEATER, TANKLESS
- 78J ELECTRICAL SYSTEM-50 AMP
- 265 CODES/STANDARDS-CSA/CMVSS
- 1B1 CODES/STANDARDS USA

WINNEBAGO
COPYRIGHT 2016 WINNEBAGO INDUSTRIES, INC.

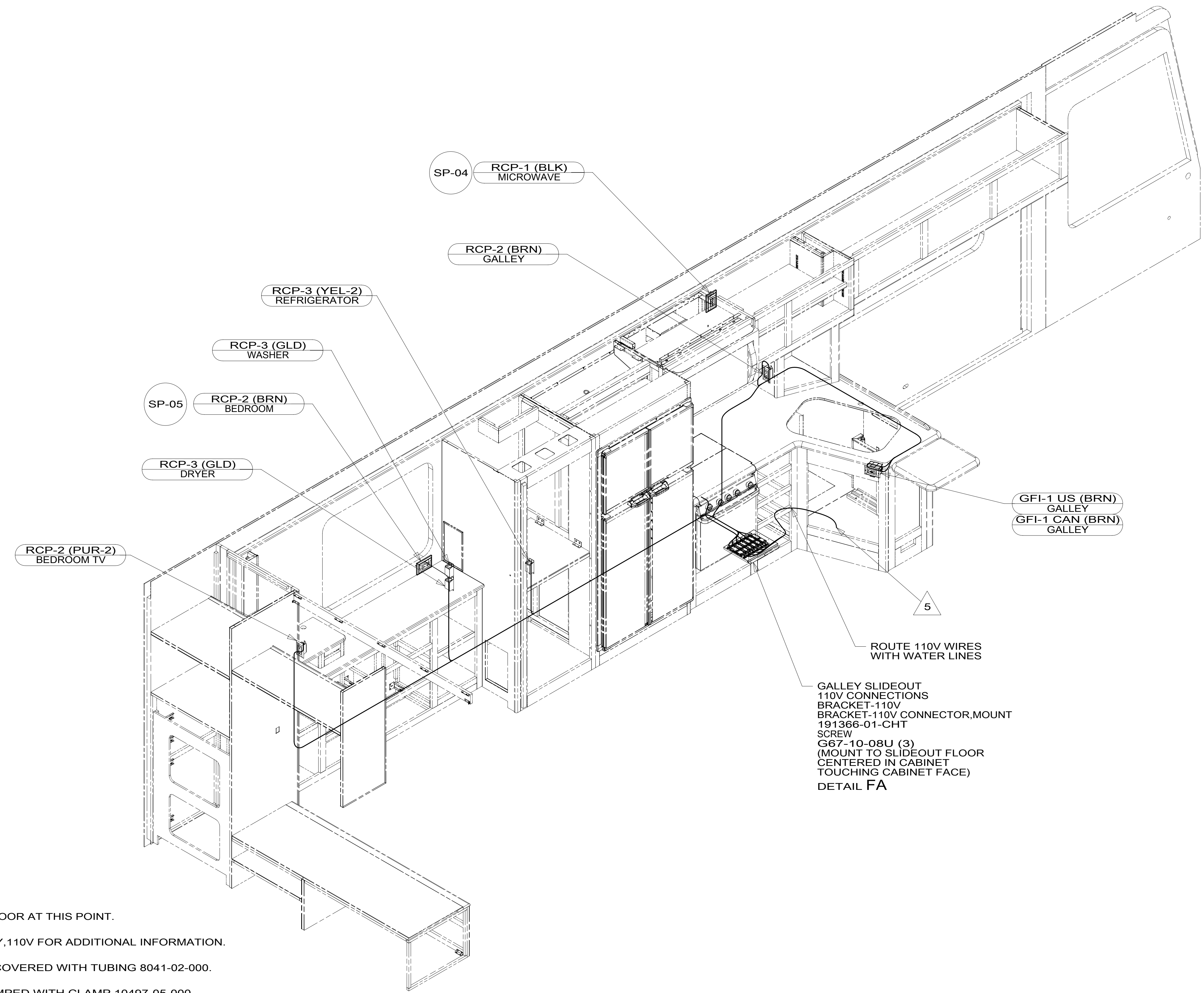
DSNR:	ALL DIMENSIONS ARE IN MILLIMETERS
DIFFR:	
UNSPECIFIED TOLERANCES:	MATERIAL:
WHOLE DIM (X) : 3	
ONE-PLACE (X.X) : 1.5	
TWO-PLACE (X.XX) : 0.50	
ANGLE : 1°	
REFER TO ES0018 FOR FASTENER TIGHTENING GUIDELINES	WEIGHT: (LBS) FIRST USED: 16 J35P
DESCRIPTION: WIRING INSTL-BODY, 110V	
SHEET: 1 OF 8	ITEM/PART NO: 000211567 / 30166501000
REF:	REV: 1 20-Sep-2016

FOR ELECTRICAL TORQUE SPECIFICATIONS SEE DWG NO. 128783-01-000

FOR ELECTRICAL CALLOUTS SEE DWG NO. 121339-01-000

8 7 6 5 4 3 2 1

D
C
B
A



5 WIRE ROUTED THROUGH FLOOR AT THIS POINT.

- 4. SEE WIRING DIAGRAM-BODY, 110V FOR ADDITIONAL INFORMATION.
- 3. ALL GROUND WIRE TO BE COVERED WITH TUBING 8041-02-000.
- 2. ALL 110V WIRE TO BE CLAMPED WITH CLAMP 10497-05-000 WITHIN 200MM OF OUTLET BOXES, USE SCREW G67-10-12U.
- 1. AT MINIMUM ALL WIRES TO BE SUPPORTED AND SECURED PER CODE REQUIREMENTS. USE CLAMP 10495 OR 10497 OR WIRE TIE 8343 OR 108046 AND SCREW G67-XX-XXX OR G56-XX-XXX AS APPROPRIATE FOR INSTALLATION.

NOTES:

5
 GALLEY SLIDEOUT
 110V CONNECTIONS
 BRACKET-110V
 BRACKET-110V CONNECTOR, MOUNT
 191366-01-CHT
 SCREW
 G67-10-08U (3)
 (MOUNT TO SLIDEOUT FLOOR
 CENTERED IN CABINET
 TOUCHING CABINET FACE)
 DETAIL FA

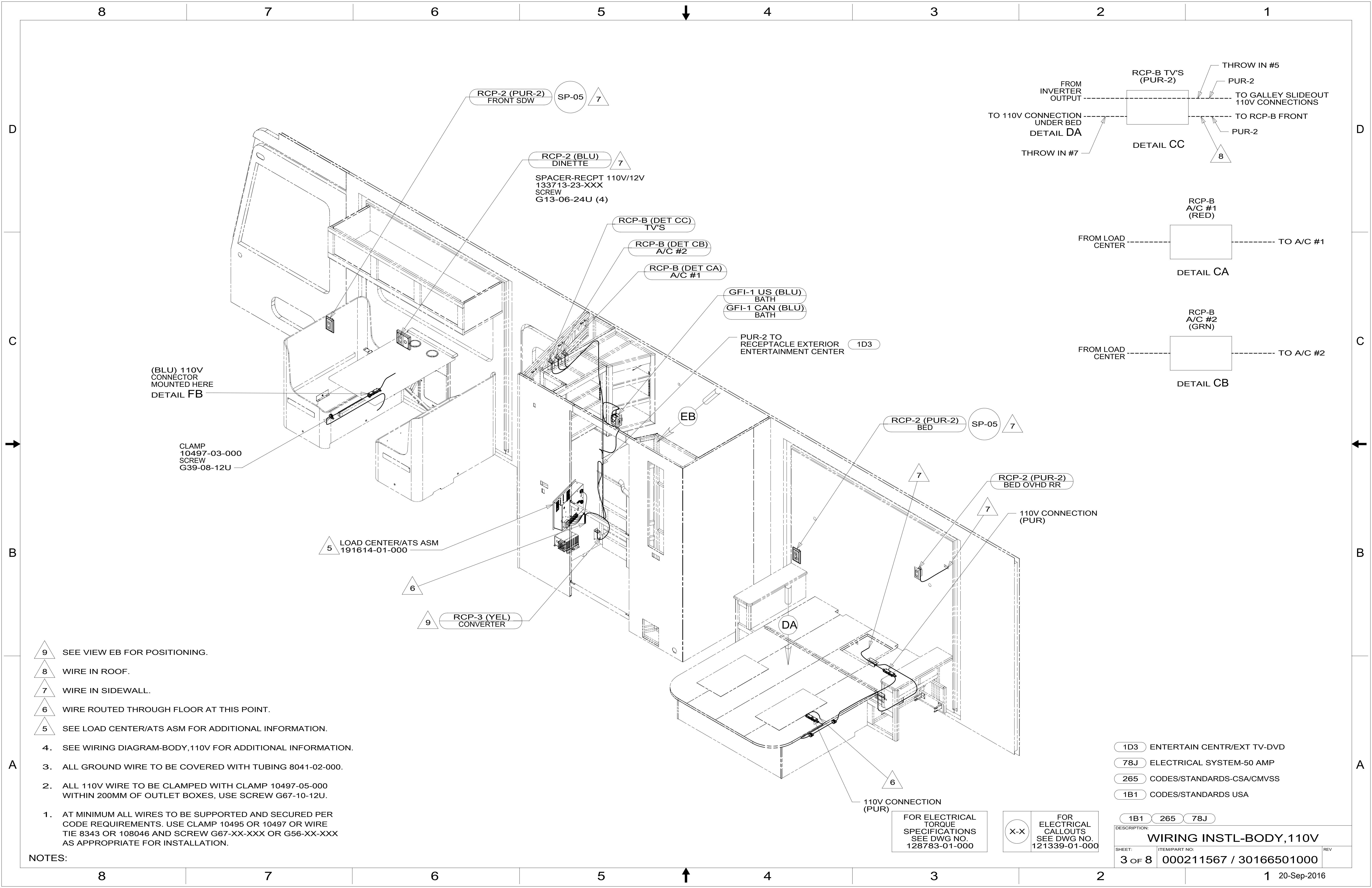
FOR ELECTRICAL
 TORQUE
 SPECIFICATIONS
 SEE DWG NO.
 128783-01-000

FOR
 ELECTRICAL
 CALLOUTS
 SEE DWG NO.
 121339-01-000

- 78J ELECTRICAL SYSTEM-50 AMP
- 265 CODES/STANDARDS-CSA/CMVSS
- 1B1 CODES/STANDARDS USA

DESCRIPTION: WIRING INSTL-BODY, 110V		
SHEET: 2 OF 8	ITEM/PART NO: 000211567 / 30166501000	REV

8 7 6 5 4 3 2 1 20-Sep-2016



- 9 SEE VIEW EB FOR POSITIONING.
- 8 WIRE IN ROOF.
- 7 WIRE IN SIDEWALL.
- 6 WIRE ROUTED THROUGH FLOOR AT THIS POINT.
- 5 SEE LOAD CENTER/ATS ASM FOR ADDITIONAL INFORMATION.
- 4. SEE WIRING DIAGRAM-BODY, 110V FOR ADDITIONAL INFORMATION.
- 3. ALL GROUND WIRE TO BE COVERED WITH TUBING 8041-02-000.
- 2. ALL 110V WIRE TO BE CLAMPED WITH CLAMP 10497-05-000 WITHIN 200MM OF OUTLET BOXES, USE SCREW G67-10-12U.
- 1. AT MINIMUM ALL WIRES TO BE SUPPORTED AND SECURED PER CODE REQUIREMENTS. USE CLAMP 10495 OR 10497 OR WIRE TIE 8343 OR 108046 AND SCREW G67-XX-XXX OR G56-XX-XXX AS APPROPRIATE FOR INSTALLATION.

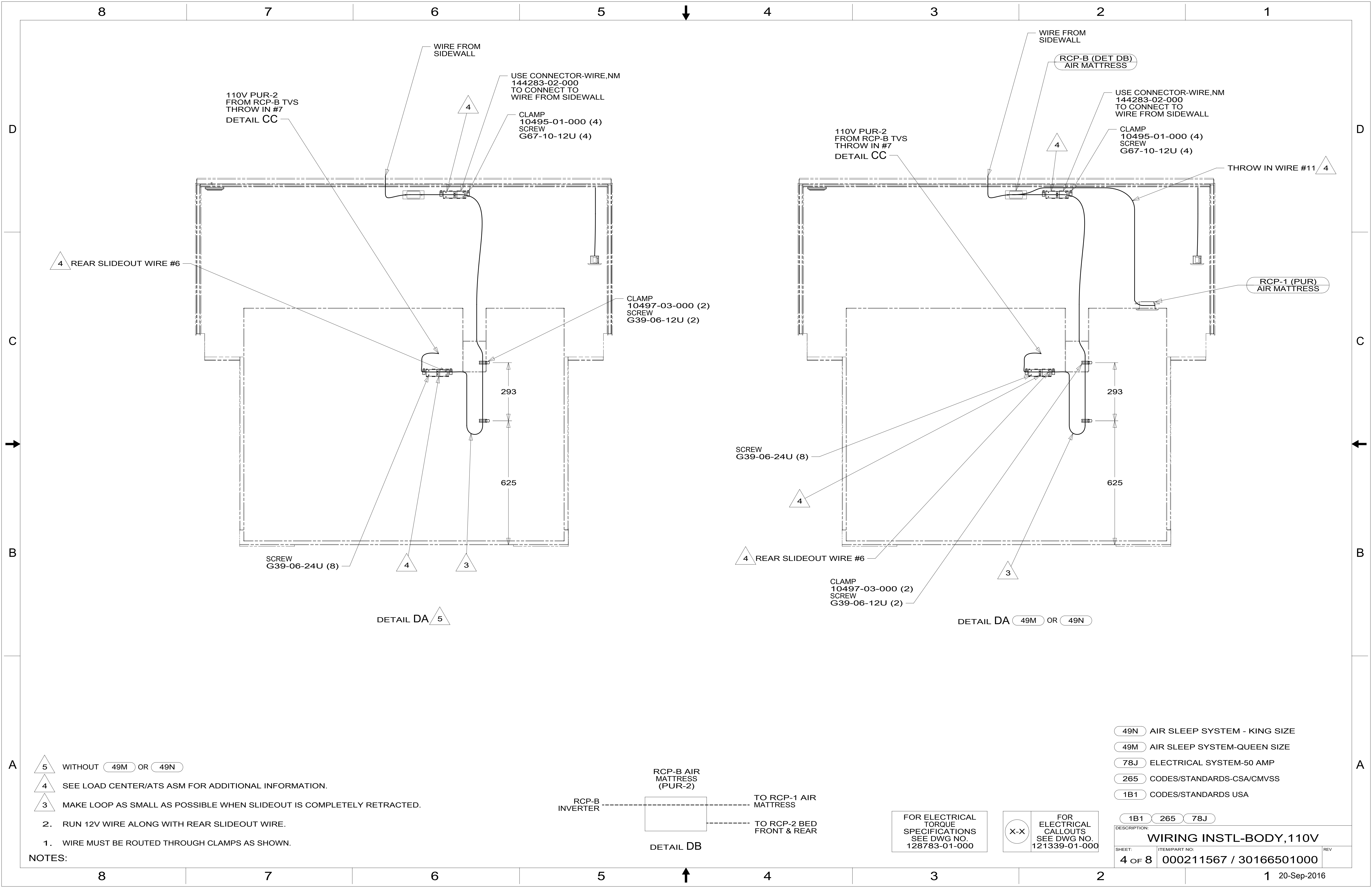
NOTES:

- 1D3 ENTERTAIN CENTR/EXT TV-DVD
- 78J ELECTRICAL SYSTEM-50 AMP
- 265 CODES/STANDARDS-CSA/CMVSS
- 1B1 CODES/STANDARDS USA

FOR ELECTRICAL TORQUE SPECIFICATIONS SEE DWG NO. 128783-01-000

FOR ELECTRICAL CALLOUTS SEE DWG NO. 121339-01-000

DESCRIPTION:		
1B1 265 78J		
WIRING INSTL-BODY, 110V		
SHEET:	ITEM/PART NO.:	REV:
3 OF 8	000211567 / 30166501000	



110V PUR-2 FROM RCP-B TVS THROW IN #7
DETAIL CC

WIRE FROM SIDEWALL

USE CONNECTOR-WIRE,NM 144283-02-000 TO CONNECT TO WIRE FROM SIDEWALL

CLAMP 10495-01-000 (4)
SCREW G67-10-12U (4)

CLAMP 10497-03-000 (2)
SCREW G39-06-12U (2)

SCREW G39-06-24U (8)

DETAIL DA 5

293

625

110V PUR-2 FROM RCP-B TVS THROW IN #7
DETAIL CC

WIRE FROM SIDEWALL
RCP-B (DET DB) AIR MATTRESS

USE CONNECTOR-WIRE,NM 144283-02-000 TO CONNECT TO WIRE FROM SIDEWALL

CLAMP 10495-01-000 (4)
SCREW G67-10-12U (4)

RCP-1 (PUR) AIR MATTRESS

SCREW G39-06-24U (8)

DETAIL DA 49M OR 49N

293

625

THROW IN WIRE #11 4

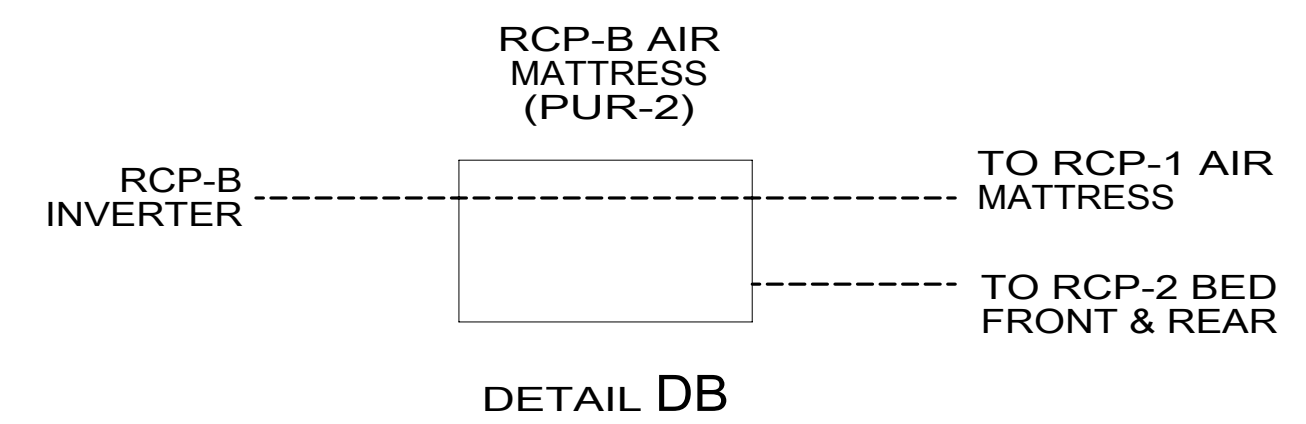
REAR SLIDEOUT WIRE #6 4

CLAMP 10497-03-000 (2)
SCREW G39-06-12U (2)

- 5 WITHOUT 49M OR 49N
- 4 SEE LOAD CENTER/ATS ASM FOR ADDITIONAL INFORMATION.
- 3 MAKE LOOP AS SMALL AS POSSIBLE WHEN SLIDEOUT IS COMPLETELY RETRACTED.

- 2. RUN 12V WIRE ALONG WITH REAR SLIDEOUT WIRE.
- 1. WIRE MUST BE ROUTED THROUGH CLAMPS AS SHOWN.

NOTES:



FOR ELECTRICAL TORQUE SPECIFICATIONS SEE DWG NO. 128783-01-000

FOR ELECTRICAL CALLOUTS SEE DWG NO. 121339-01-000

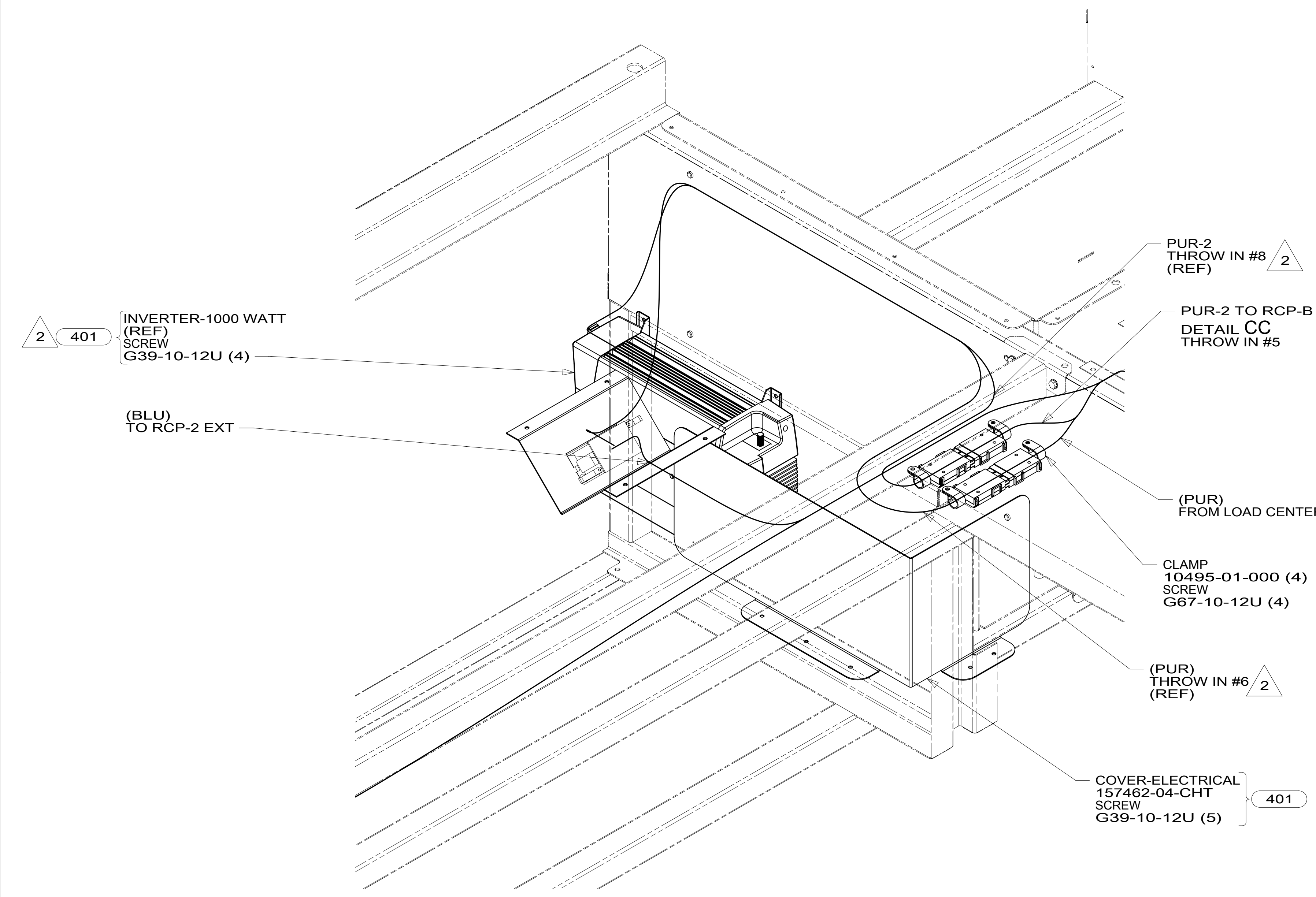
- 49N AIR SLEEP SYSTEM - KING SIZE
- 49M AIR SLEEP SYSTEM-QUEEN SIZE
- 78J ELECTRICAL SYSTEM-50 AMP
- 265 CODES/STANDARDS-CSA/CMVSS
- 1B1 CODES/STANDARDS USA

DESCRIPTION: WIRING INSTL-BODY, 110V		
SHEET: 4 OF 8	ITEM/PART NO: 000211567 / 30166501000	REV

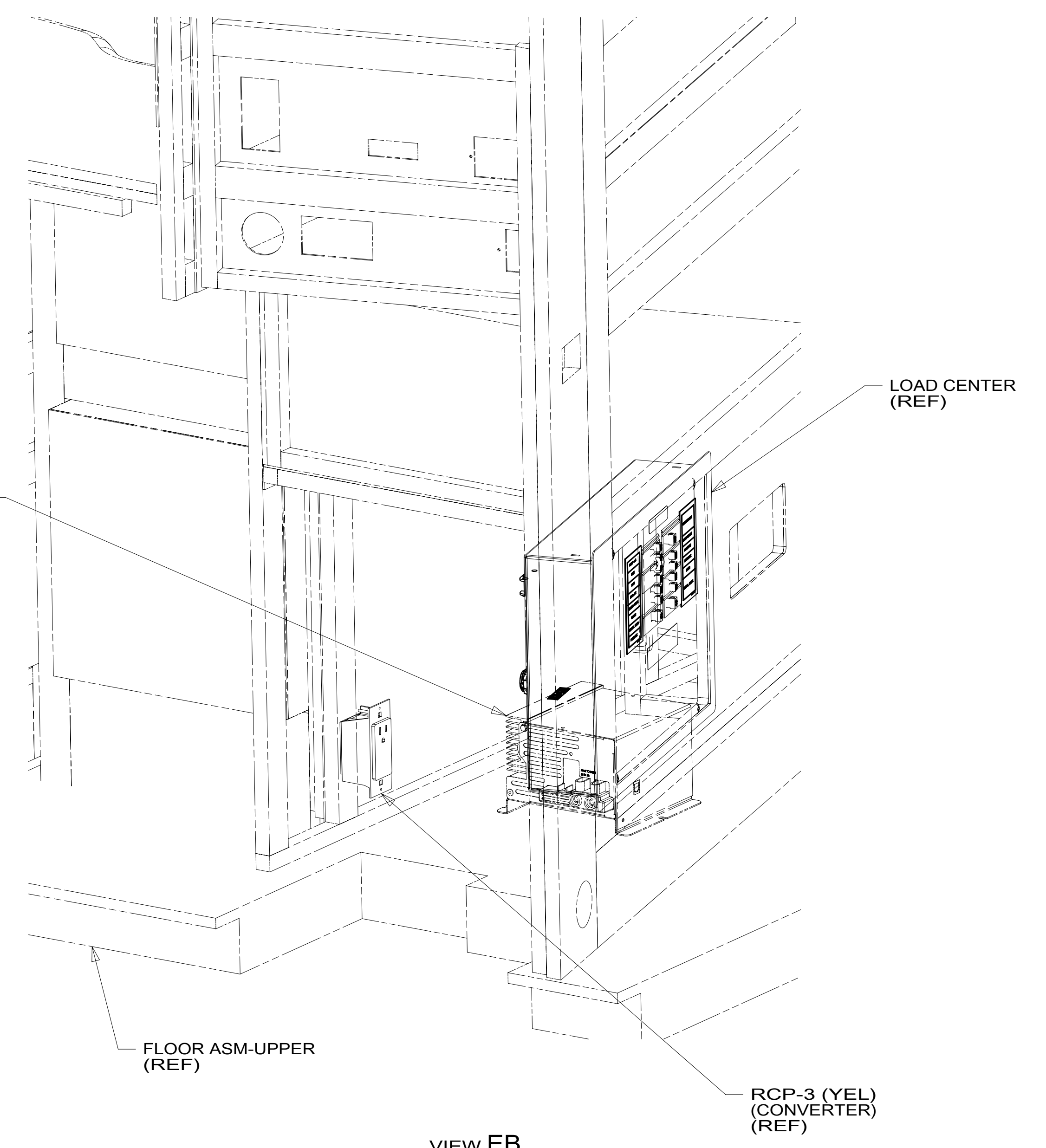
8 7 6 5 4 3 2 1

D
C
B
A

D
C
B
A



VIEW EA



VIEW EB

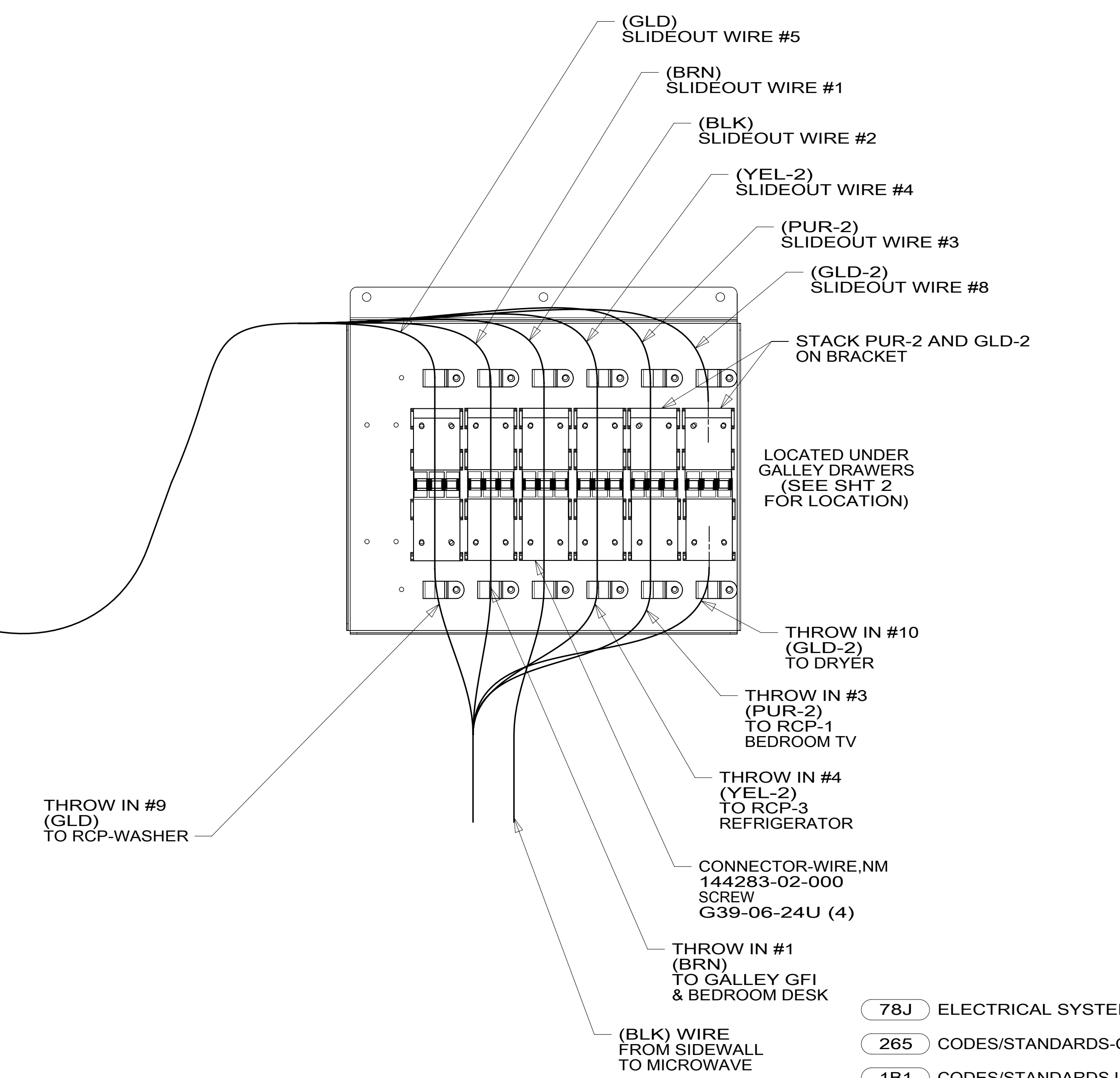
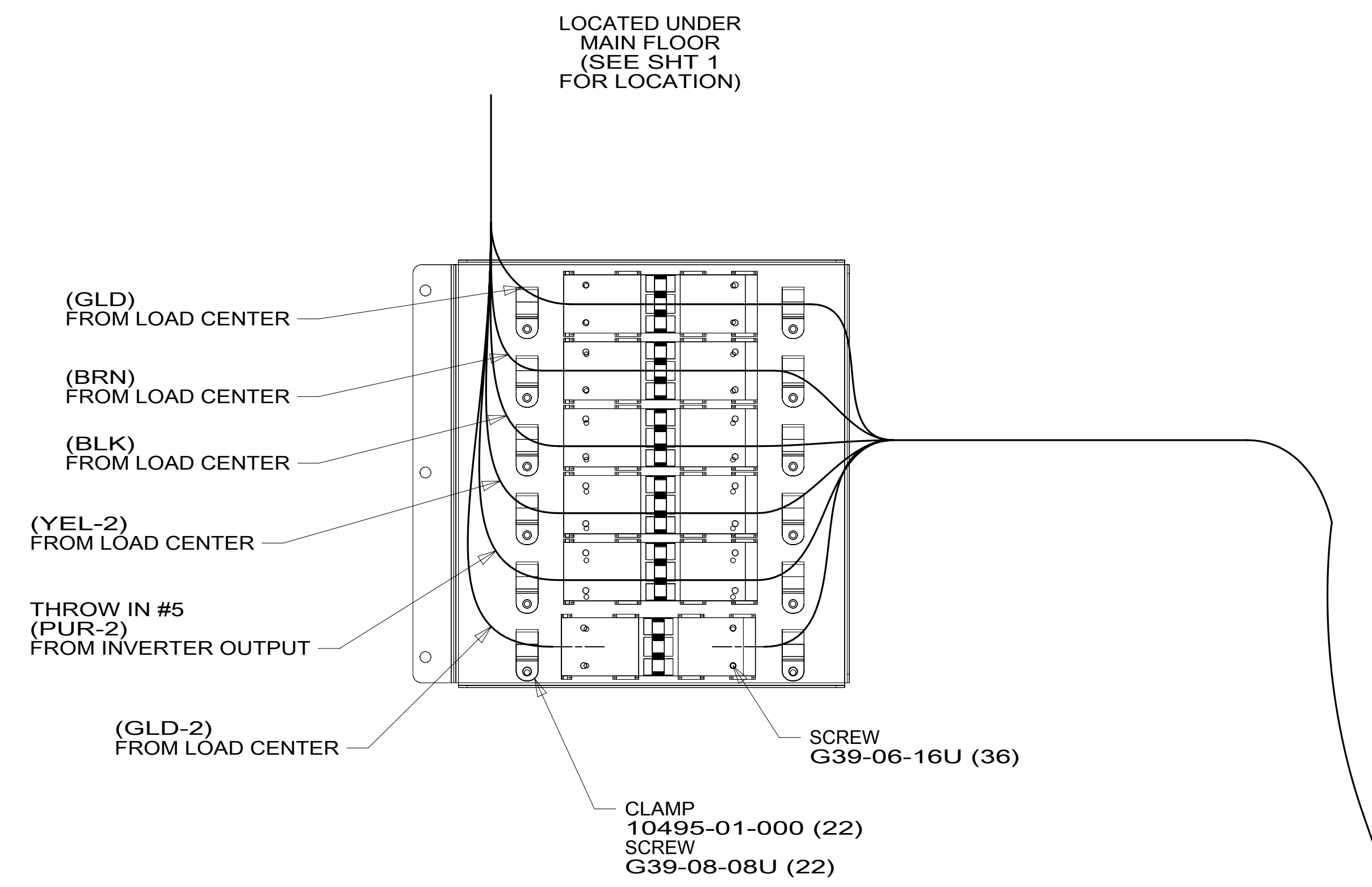
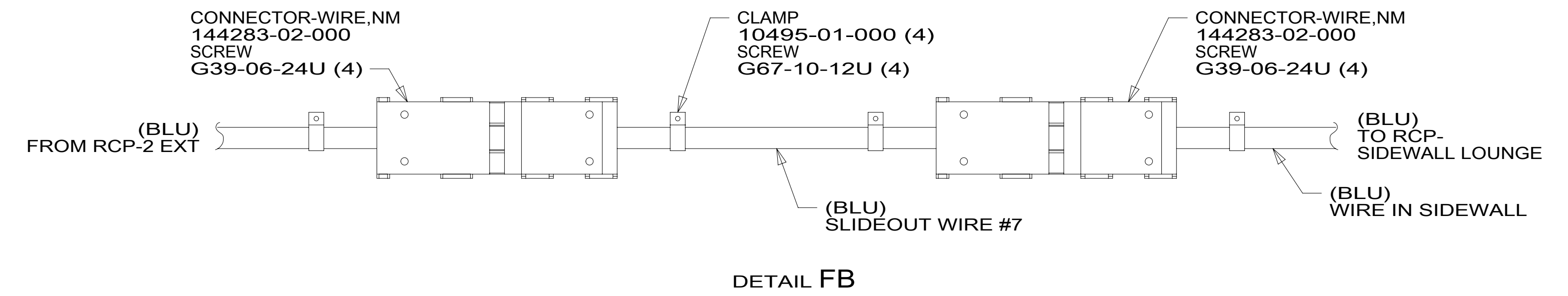
- NOTES:
- 2 SEE LOAD CENTER/ATS ASM FOR ADDITIONAL INFORMATION.
 - 1 SEE WIRING INSTL-BODY, 12V FOR ADDITIONAL INFORMATION.

FOR ELECTRICAL TORQUE SPECIFICATIONS SEE DWG NO. 128783-01-000

FOR ELECTRICAL CALLOUTS SEE DWG NO. 121339-01-000

- 401 INVERTER-DC/AC, 1000 WATT
- 78J ELECTRICAL SYSTEM-50 AMP
- 265 CODES/STANDARDS-CSA/CMVSS
- 1B1 CODES/STANDARDS USA

DESCRIPTION:		
WIRING INSTL-BODY, 110V		
SHEET:	ITEM/PART NO.:	REV:
5 OF 8	000211567 / 30166501000	



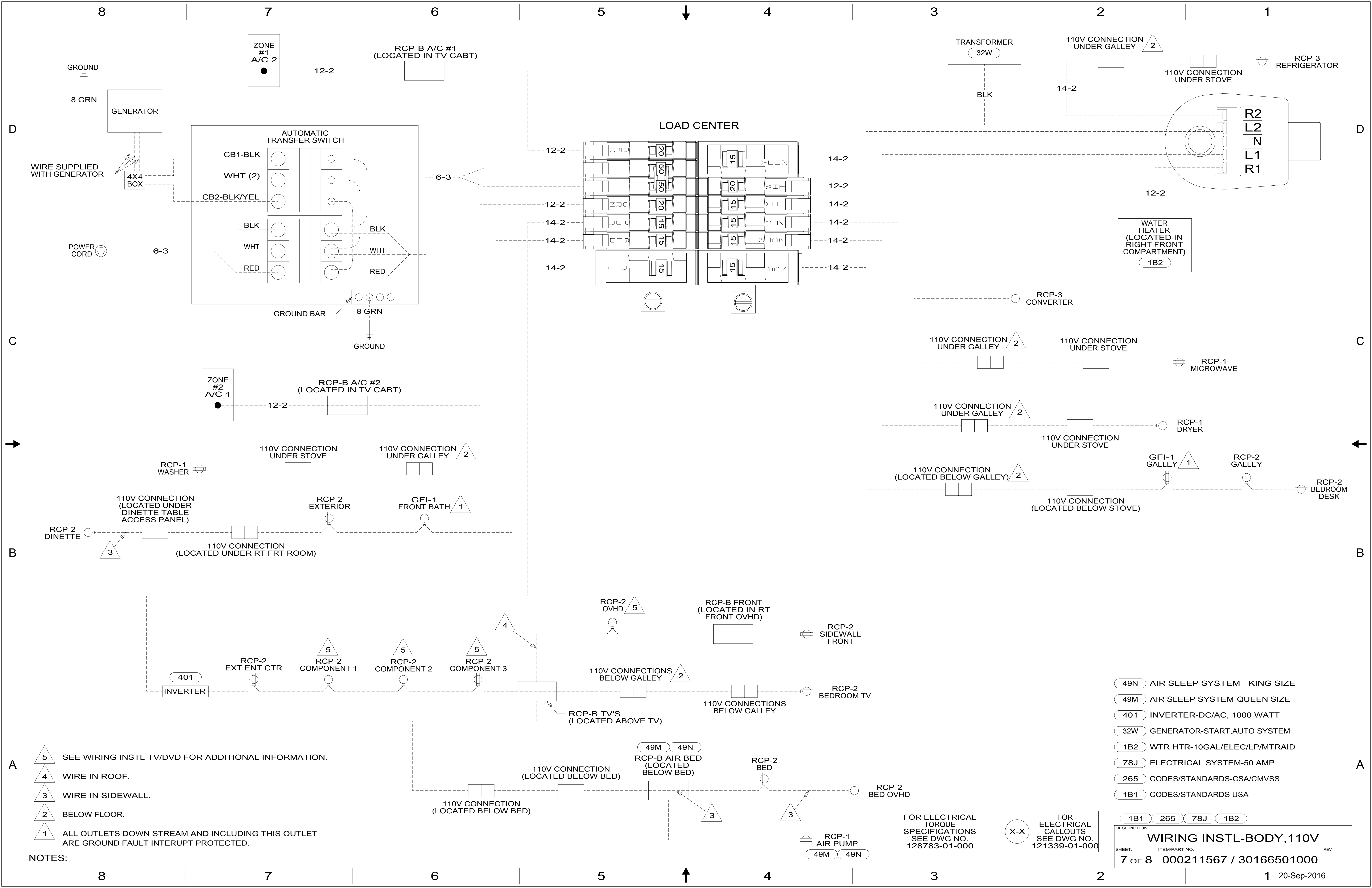
DETAIL FA

- 78J ELECTRICAL SYSTEM-50 AMP
- 265 CODES/STANDARDS-CSA/CMVSS
- 1B1 CODES/STANDARDS USA

FOR ELECTRICAL TORQUE SPECIFICATIONS SEE DWG NO. 128783-01-000

FOR ELECTRICAL CALLOUTS SEE DWG NO. 121339-01-000

DESCRIPTION:	1B1 265 78J	
WIRING INSTL-BODY, 110V		
SHEET:	ITEM/PART NO:	REV
6 OF 8	000211567 / 30166501000	



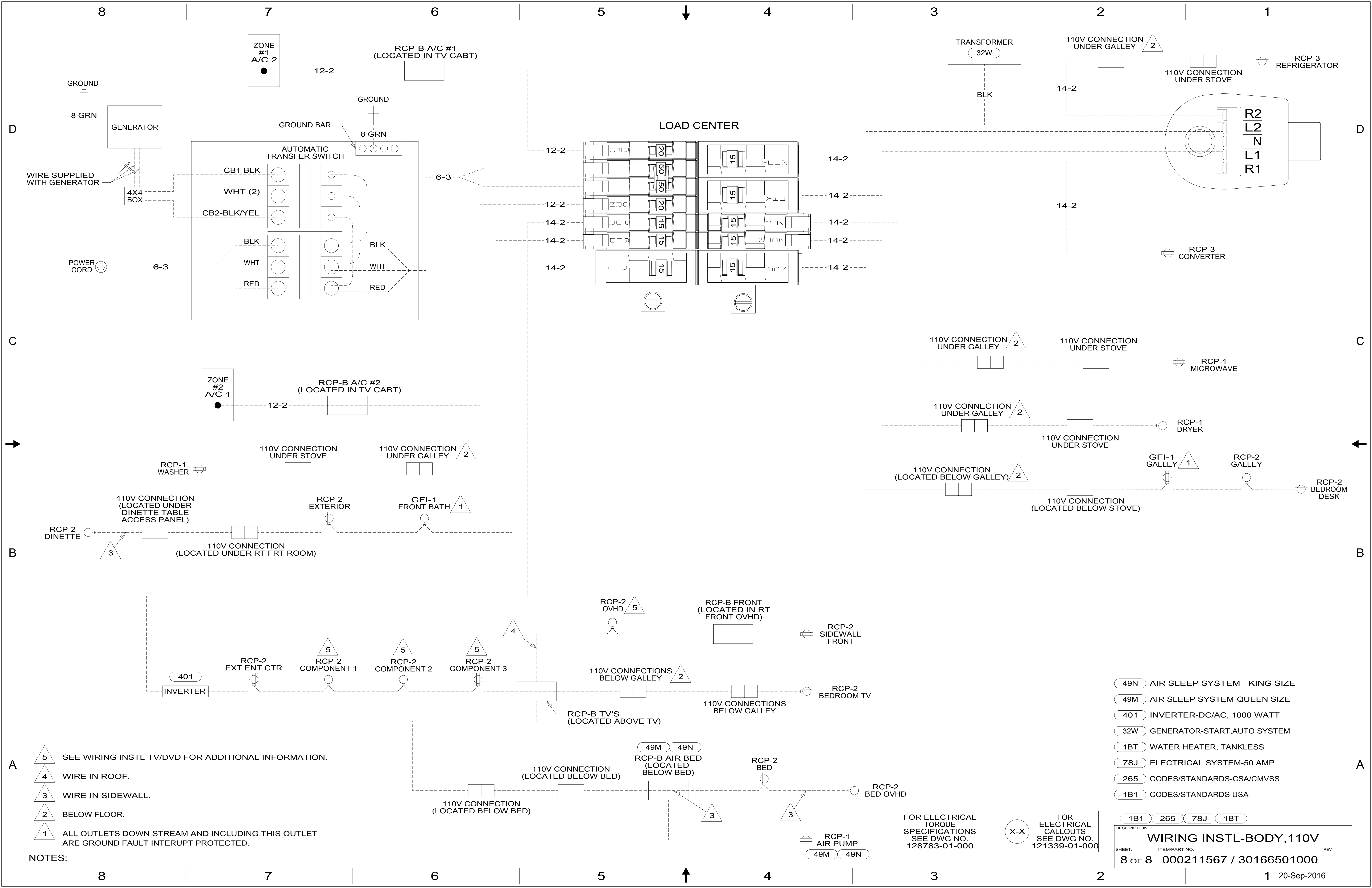
- NOTES:
- 5 SEE WIRING INSTL-TV/DVD FOR ADDITIONAL INFORMATION.
 - 4 WIRE IN ROOF.
 - 3 WIRE IN SIDEWALL.
 - 2 BELOW FLOOR.
 - 1 ALL OUTLETS DOWN STREAM AND INCLUDING THIS OUTLET ARE GROUND FAULT INTERRUPT PROTECTED.

FOR ELECTRICAL TORQUE SPECIFICATIONS SEE DWG NO. 128783-01-000

FOR ELECTRICAL CALLOUTS SEE DWG NO. 121339-01-000

- 49N AIR SLEEP SYSTEM - KING SIZE
- 49M AIR SLEEP SYSTEM-QUEEN SIZE
- 401 INVERTER-DC/AC, 1000 WATT
- 32W GENERATOR-START,AUTO SYSTEM
- 1B2 WTR HTR-10GAL/ELEC/LP/MTRAIID
- 78J ELECTRICAL SYSTEM-50 AMP
- 265 CODES/STANDARDS-CSA/CMVSS
- 1B1 CODES/STANDARDS USA

DESCRIPTION: WIRING INSTL-BODY, 110V		
SHEET: 7 OF 8	ITEM/PART NO: 000211567 / 30166501000	REV



- NOTES:**
- 5 SEE WIRING INSTL-TV/DVD FOR ADDITIONAL INFORMATION.
 - 4 WIRE IN ROOF.
 - 3 WIRE IN SIDEWALL.
 - 2 BELOW FLOOR.
 - 1 ALL OUTLETS DOWN STREAM AND INCLUDING THIS OUTLET ARE GROUND FAULT INTERRUPT PROTECTED.

- 49N AIR SLEEP SYSTEM - KING SIZE
- 49M AIR SLEEP SYSTEM-QUEEN SIZE
- 401 INVERTER-DC/AC, 1000 WATT
- 32W GENERATOR-START,AUTO SYSTEM
- 1BT WATER HEATER, TANKLESS
- 78J ELECTRICAL SYSTEM-50 AMP
- 265 CODES/STANDARDS-CSA/CMVSS
- 1B1 CODES/STANDARDS USA

FOR ELECTRICAL TORQUE SPECIFICATIONS SEE DWG NO. 128783-01-000

FOR ELECTRICAL CALLOUTS SEE DWG NO. 121339-01-000

DESCRIPTION: WIRING INSTL-BODY, 110V		
SHEET: 8 OF 8	ITEM/PART NO: 000211567 / 30166501000	REV
1 20-Sep-2016		