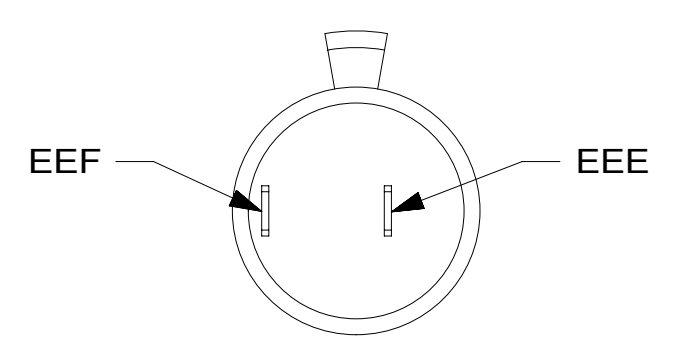
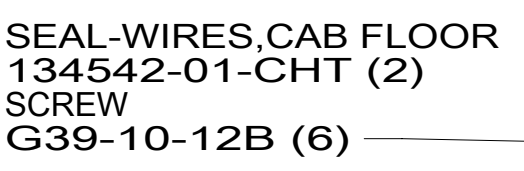
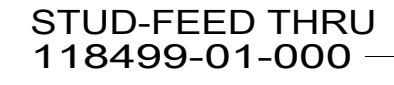
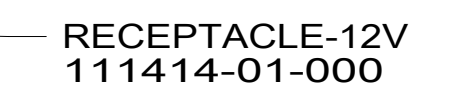
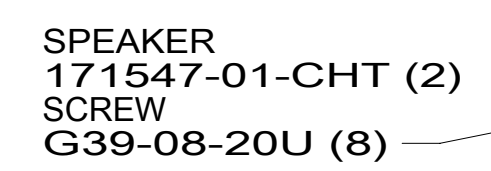
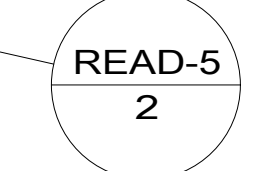
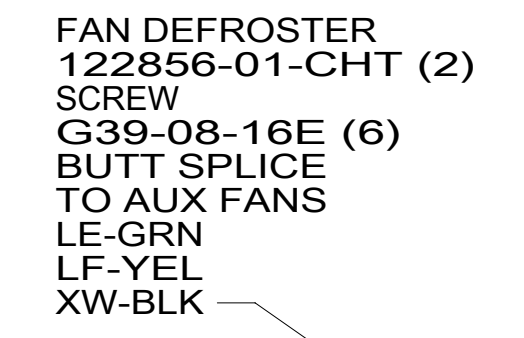
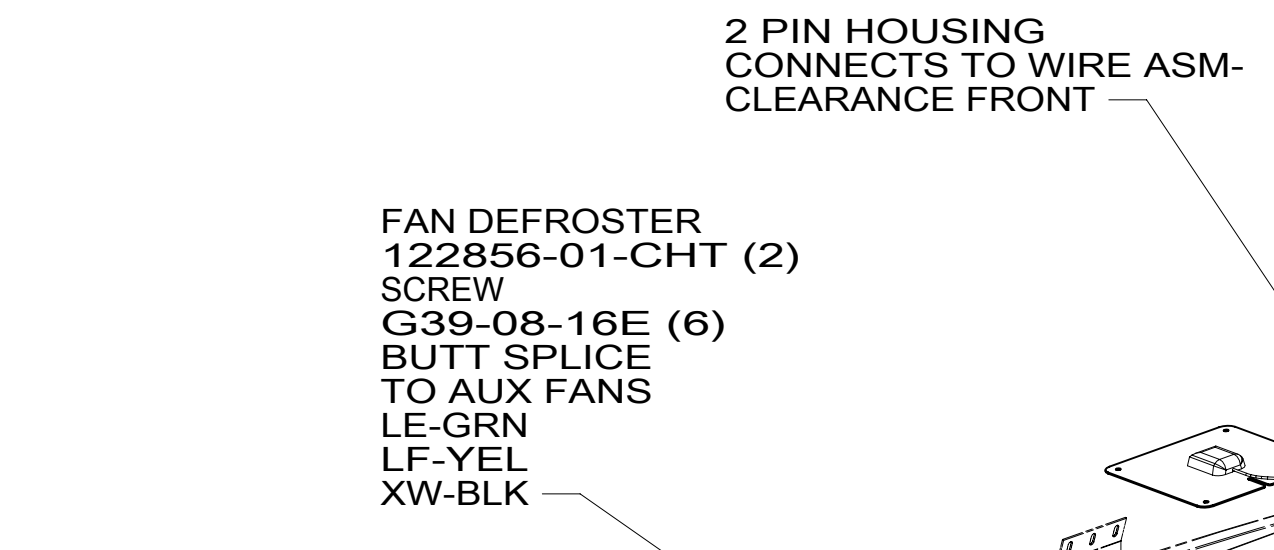


DETAIL AA



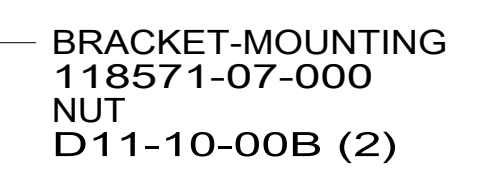
DETAIL AB



- 6 USE TAPE 8363-03-000 TO SECURE WIRES IN A-POST.
- 5 CUT VISOR WIRING TO 300MM BEFORE CONNECTING.
- 4 EDGE OF LABEL TO HANG JUST BELOW BOTTOM OF DASH.
- 3 CONNECT CABLE SUPPLIED WITH SATELLITE RADIO TO RECEIVER & PLUG INTO BACK OF RADIO.
- 2 COVER EACH SPEAKER GRILL WITH TAPE-CLEAR 114187-01-000 (600 MM).

1. WINNEBAGO WIRE ASSEMBLIES ARE SHOWN FOR CLARITY.

NOTES:



FOR ELECTRICAL TORQUE SPECIFICATIONS SEE DWG NO. 128783-01-000

FOR ELECTRICAL CALLOUTS SEE DWG NO. 121339-01-000

- 16A FORD 26,000#-22.5 AL WHL
- 16Z FORD 24,000#-22.5 ALUM WHEEL
- 16L FORD 22,000#-22.5 AL WHL
- 265 CODES/STANDARDS-CSA/CMVSS
- 1B1 CODES/STANDARDS USA

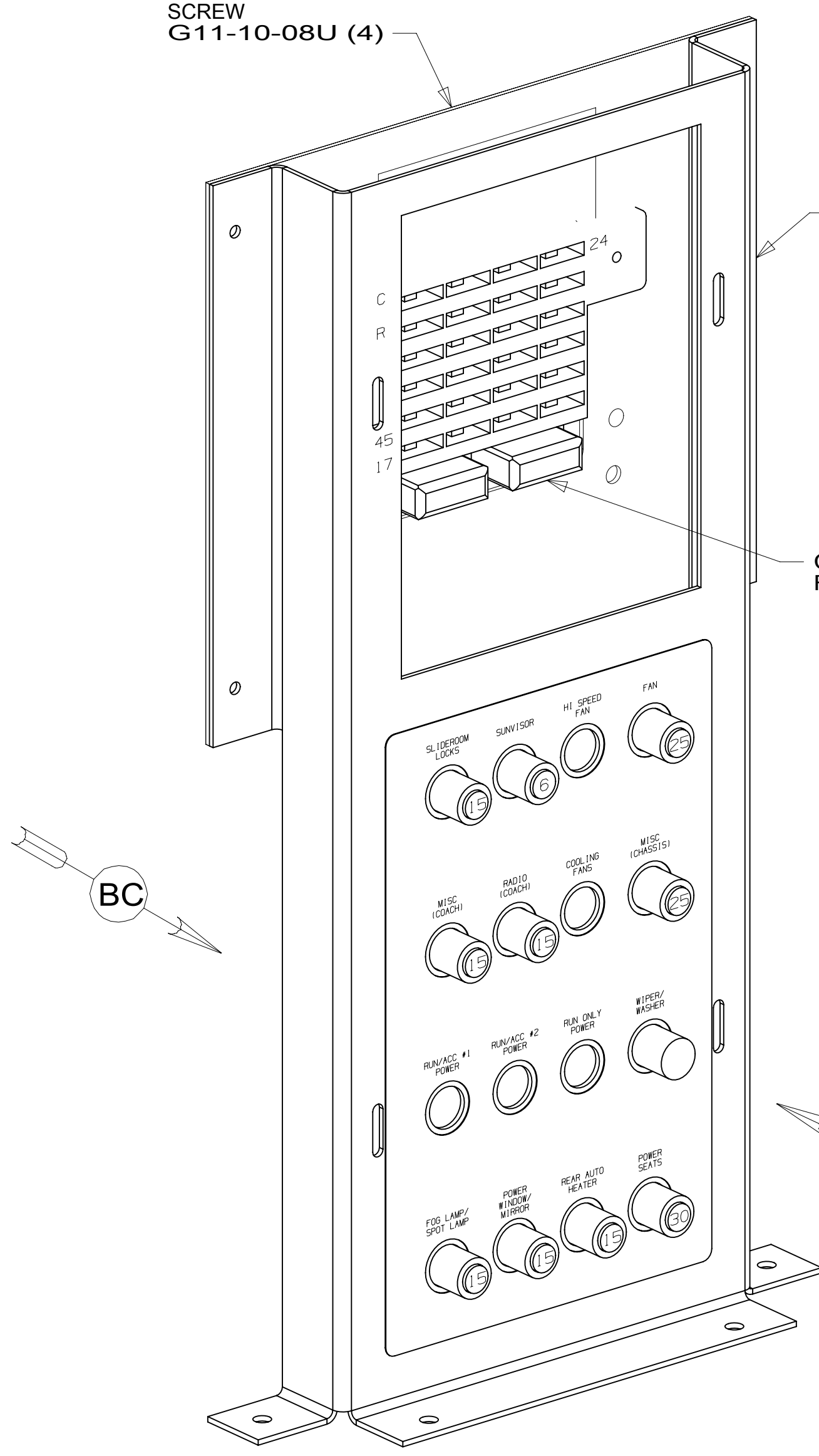
WINNEBAGO
COPYRIGHT 2016 WINNEBAGO INDUSTRIES, INC.

DSNR:		ALL DIMENSIONS ARE IN MILLIMETERS
DFFR:		
UNSPECIFIED TOLERANCES:		MATERIAL:
WHOLE DIM (X)	3	
ONE-PLACE (X.X)	1.5	
TWO-PLACE (X.XX)	0.50	
ANGLE	1°	
REFER TO ES0018 FOR FASTENER TIGHTENING GUIDELINES	WEIGHT: (LBS)	FIRST USED:
		16 J-SER
DESCRIPTION:		
WIRING INSTL-FRONT END		
SHEET:	ITEM/PART NO.:	REV:
1 OF 8	000211553 / 30162001000	

BRACKET-FUSE PANEL
149690-02-CHT
SCREW
G11-10-08U (4)

BRACKET-CIRCUIT BREAKER
149689-01-CHT
SCREW
G11-10-08U (4)

CHASSIS SUPPLIED
FUSE PANEL ²



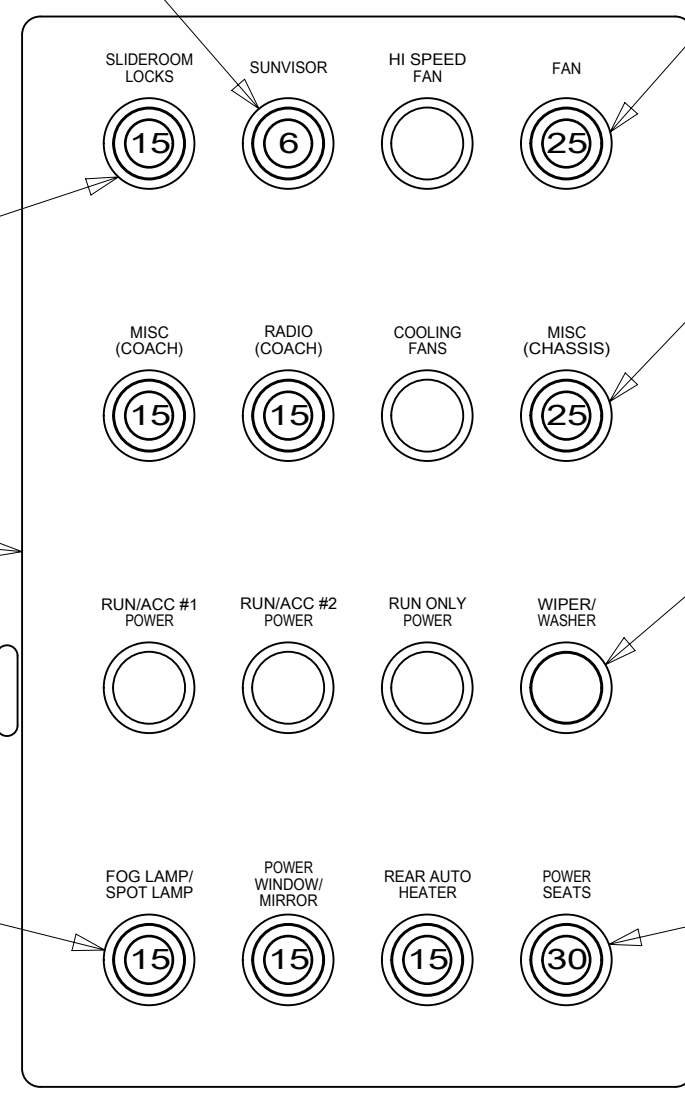
DETAIL BA

CIRCUIT BREAKER-6 AMP
93654-01-000
SCREW
G52-06-05U

CIRCUIT BREAKER-15 AMP
93654-02-000 (5)
SCREW
G52-06-05U (5)

LABEL-CIRCUIT BREAKER
93236-66-000

CIRCUIT BREAKER-15 AMP
93654-02-000
SCREW
G52-06-05U



VIEW BB

CIRCUIT BREAKER-25 AMP
93655-01-000
SCREW
G52-06-04U
G52-06-05U
LOCKWASHER
OME02B-04-071

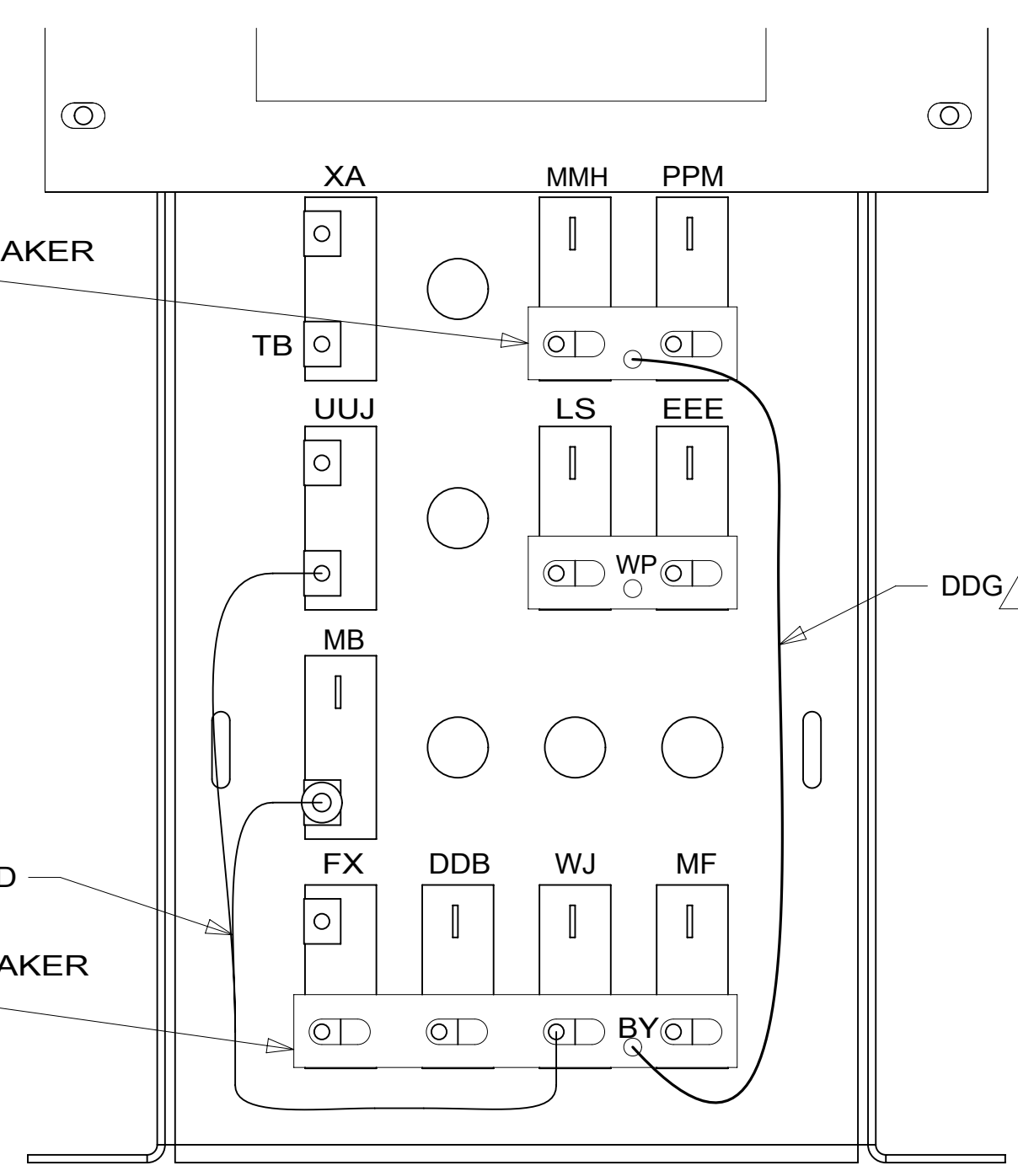
CIRCUIT BREAKER-25 AMP
93655-01-000
SCREW
G52-06-04U
G52-06-05U
LOCKWASHER
OME02B-04-071

BREAKER-SELF
RESET, 20 AMP
182283-01-000
SCREW
G52-06-04U
WASHER-LOCK
OME02B-04-071

CIRCUIT BREAKER-30 AMP
93655-02-000
SCREW
G52-06-04U
G52-06-05U

BUSS BAR CIRCUIT BREAKER
141744-01-000 (2)

BUSS BAR CIRCUIT BREAKER
141744-03-000



VIEW BC ¹

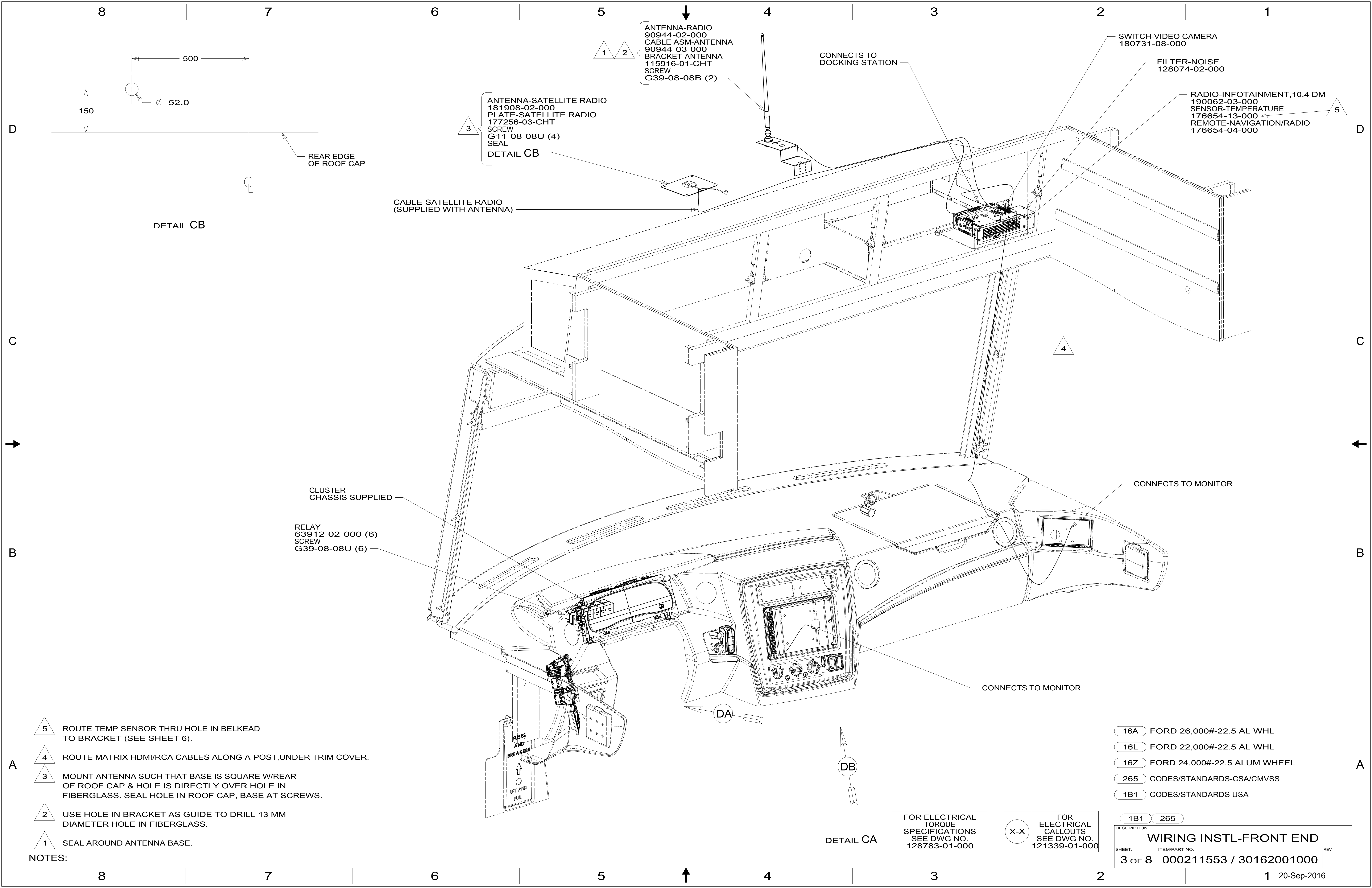
- NOTES:
- ³ CONNECT DDG TO HOLE IN BUSS BAR OR TO BOTTOM LUG OF 30 AMP BREAKER.
 - ² WORKHORSE PANEL SHOWN.
 - ¹ ALL CIRCUITS ARE IN WIRE ASM-IP,MAIN.

FOR ELECTRICAL
TORQUE
SPECIFICATIONS
SEE DWG NO.
128783-01-000

FOR
ELECTRICAL
CALLOUTS
SEE DWG NO.
121339-01-000

- 16A FORD 26,000#-22.5 AL WHL
- 16Z FORD 24,000#-22.5 ALUM WHEEL
- 16L FORD 22,000#-22.5 AL WHL
- 265 CODES/STANDARDS-CSA/CMVSS
- 1B1 CODES/STANDARDS USA

DESCRIPTION:	1B1 265	
WIRING INSTL-FRONT END		
SHEET:	ITEM/PART NO:	REV
2 OF 8	000211553 / 30162001000	



ANTENNA-RADIO
 90944-02-000
 CABLE ASM-ANTENNA
 90944-03-000
 BRACKET-ANTENNA
 115916-01-CHT
 SCREW
 G39-08-08B (2)

ANTENNA-SATELLITE RADIO
 181908-02-000
 PLATE-SATELLITE RADIO
 177256-03-CHT
 SCREW
 G11-08-08U (4)
 SEAL
 DETAIL CB

SWITCH-VIDEO CAMERA
 180731-08-000

FILTER-NOISE
 128074-02-000

RADIO-INFOTAINMENT, 10.4 DM
 190062-03-000
 SENSOR-TEMPERATURE
 176654-13-000
 REMOTE-NAVIGATION/RADIO
 176654-04-000

CABLE-SATELLITE RADIO
 (SUPPLIED WITH ANTENNA)

CLUSTER
 CHASSIS SUPPLIED

RELAY
 63912-02-000 (6)
 SCREW
 G39-08-08U (6)

FOR ELECTRICAL
 TORQUE
 SPECIFICATIONS
 SEE DWG NO.
 128783-01-000

FOR ELECTRICAL
 CALLOUTS
 SEE DWG NO.
 121339-01-000

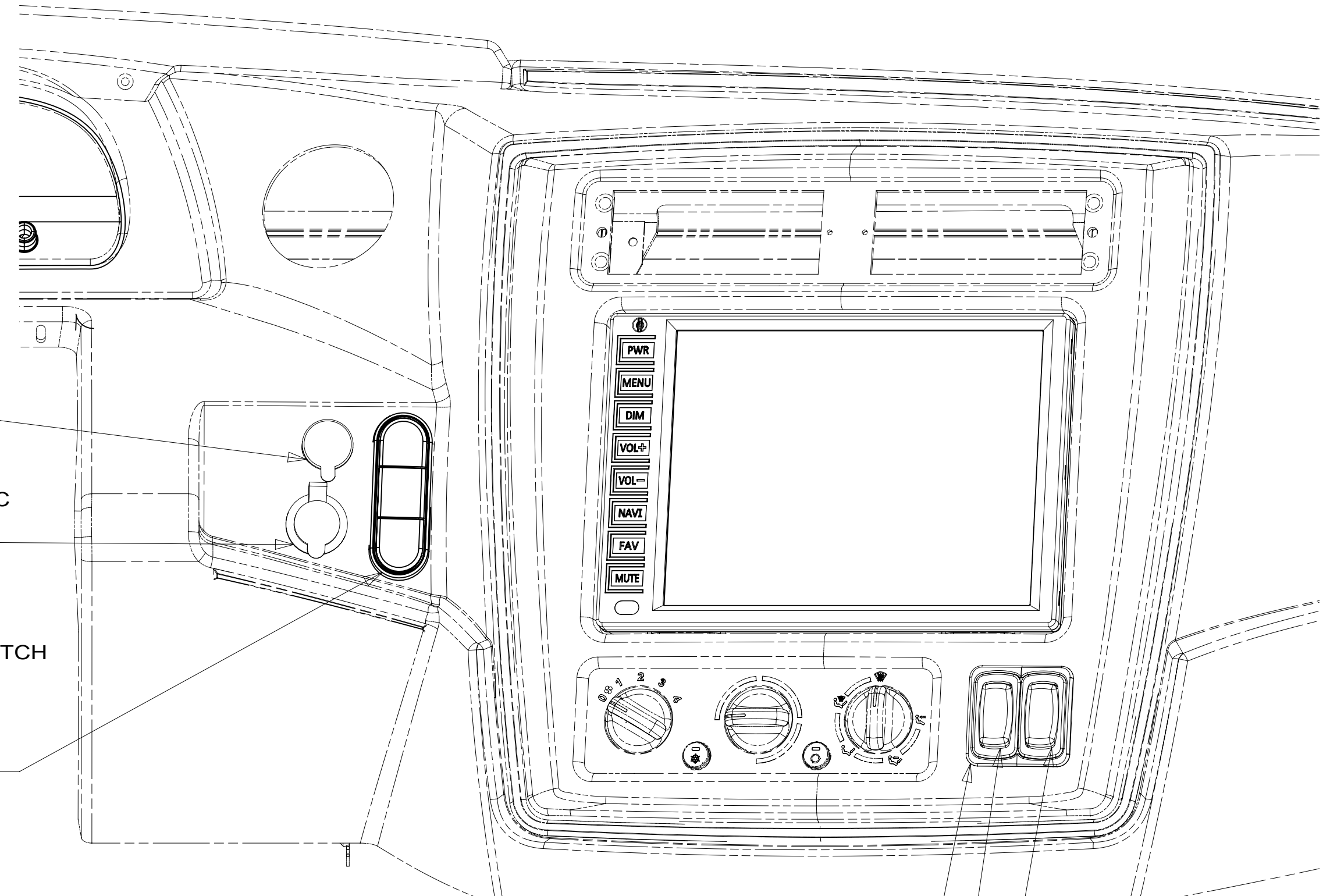
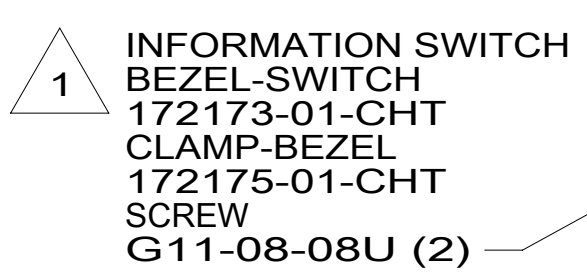
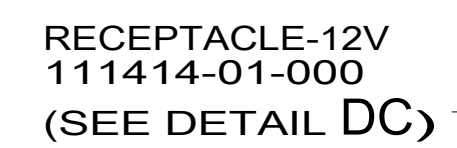
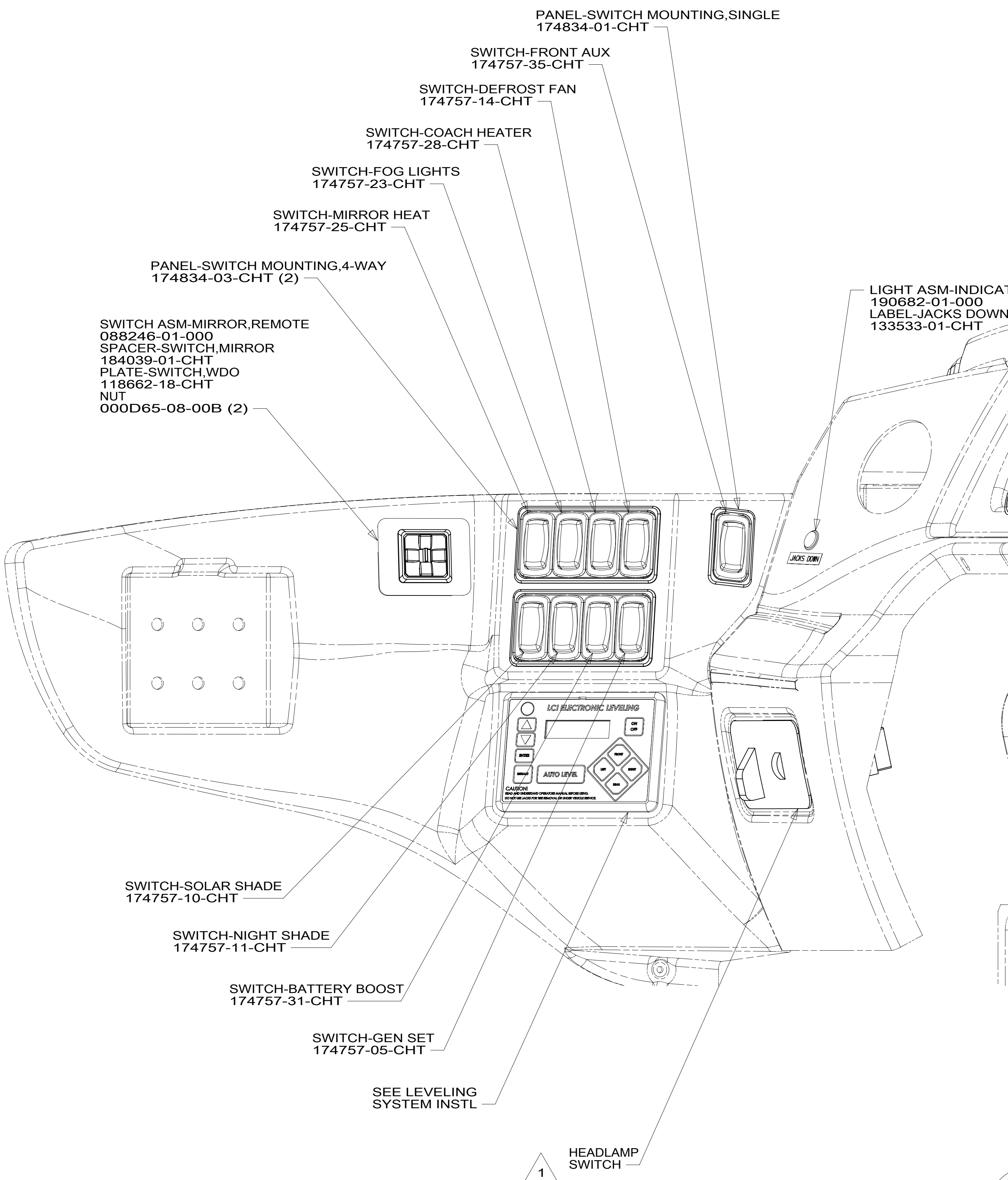
- 16A FORD 26,000#-22.5 AL WHL
- 16L FORD 22,000#-22.5 AL WHL
- 16Z FORD 24,000#-22.5 ALUM WHEEL
- 265 CODES/STANDARDS-CSA/CMVSS
- 1B1 CODES/STANDARDS USA

DESCRIPTION:	
WIRING INSTL-FRONT END	
SHEET:	ITEM/PART NO:
3 OF 8	000211553 / 30162001000
REV	

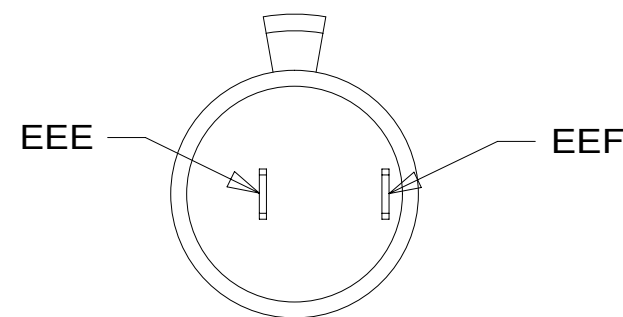
- NOTES:
- 5 ROUTE TEMP SENSOR THRU HOLE IN BELKEAD TO BRACKET (SEE SHEET 6).
 - 4 ROUTE MATRIX HDMI/RCA CABLES ALONG A-POST, UNDER TRIM COVER.
 - 3 MOUNT ANTENNA SUCH THAT BASE IS SQUARE W/REAR OF ROOF CAP & HOLE IS DIRECTLY OVER HOLE IN FIBERGLASS. SEAL HOLE IN ROOF CAP, BASE AT SCREWS.
 - 2 USE HOLE IN BRACKET AS GUIDE TO DRILL 13 MM DIAMETER HOLE IN FIBERGLASS.
 - 1 SEAL AROUND ANTENNA BASE.

DETAIL CB

DETAIL CA



DETAIL DB



DETAIL DA

DETAIL DC

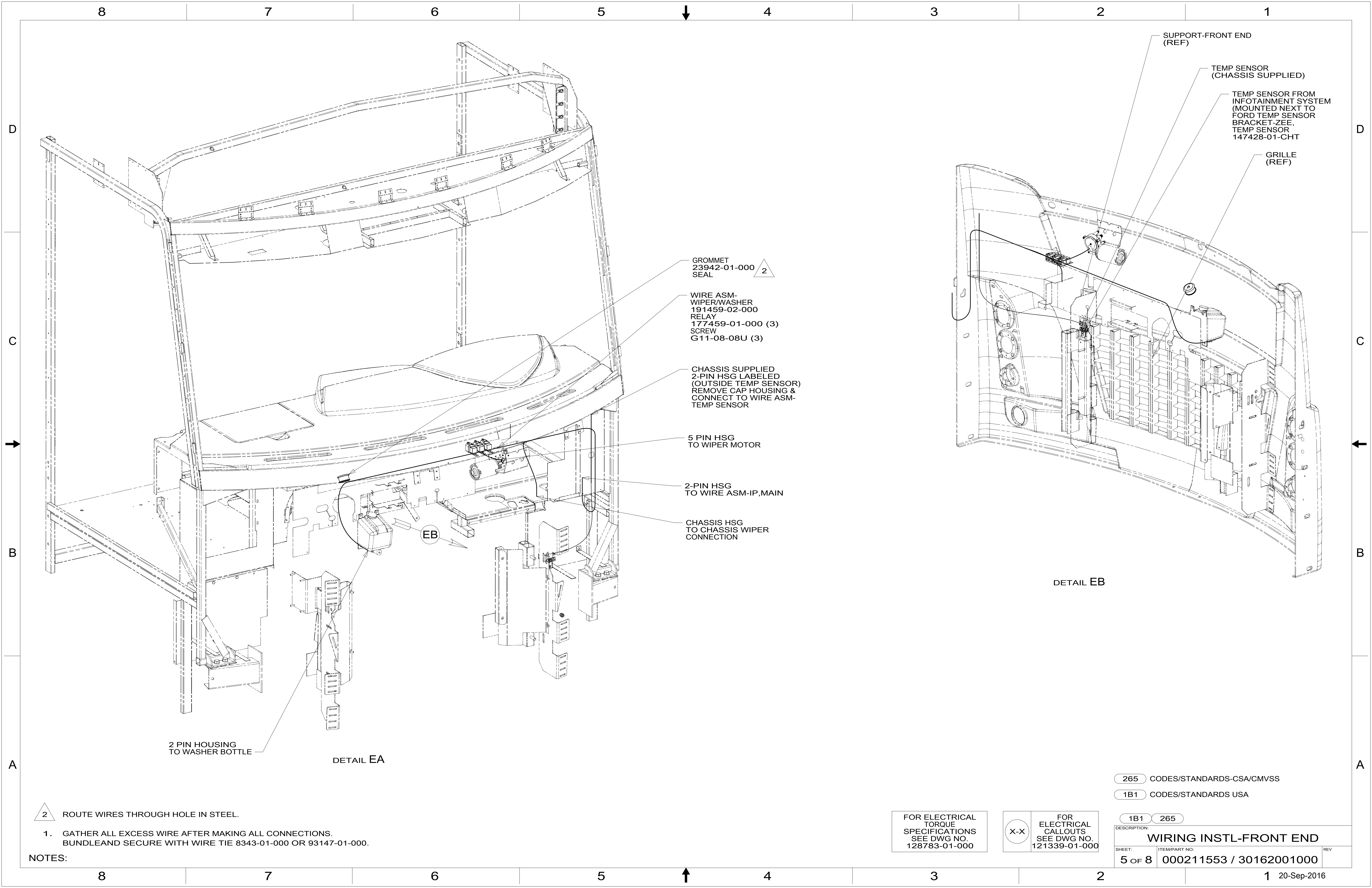
- NOTES:
- 3 WIRING FROM LEVELING SYSTEM. SEE LEVELING SYSTEM INSTL. FOR ADDITIONAL INFORMATION.
 - 2 CONNECT POSITIVE WIRE TO TERMINAL MARKED WITH "RED".
 - 1 CHASSIS SUPPLIED

- 16A FORD 26,000#-22.5 AL WHL
- 16L FORD 22,000#-22.5 AL WHL
- 16Z FORD 24,000#-22.5 ALUM WHEEL
- 265 CODES/STANDARDS-CSA/CMVSS
- 1B1 CODES/STANDARDS USA

FOR ELECTRICAL TORQUE SPECIFICATIONS SEE DWG NO. 128783-01-000

FOR ELECTRICAL CALLOUTS SEE DWG NO. 121339-01-000

1B1 265
 DESCRIPTION:
WIRING INSTL-FRONT END
 SHEET: 4 OF 8 ITEM/PART NO: 000211553 / 30162001000 REV



SUPPORT-FRONT END (REF)

TEMP SENSOR (CHASSIS SUPPLIED)

TEMP SENSOR FROM INFOTAINMENT SYSTEM (MOUNTED NEXT TO FORD TEMP SENSOR BRACKET-ZEE, TEMP SENSOR 147428-01-CHT)

GRILLE (REF)

GROMMET 23942-01-000 SEAL 2

WIRE ASM-WIPER/WASHER 191459-02-000 RELAY 177459-01-000 (3) SCREW G11-08-08U (3)

CHASSIS SUPPLIED 2-PIN HSG LABELED (OUTSIDE TEMP SENSOR) REMOVE CAP HOUSING & CONNECT TO WIRE ASM-TEMP SENSOR

5 PIN HSG TO WIPER MOTOR

2-PIN HSG TO WIRE ASM-IP,MAIN

CHASSIS HSG TO CHASSIS WIPER CONNECTION

2 PIN HOUSING TO WASHER BOTTLE

DETAIL EA

DETAIL EB

- 2 ROUTE WIRES THROUGH HOLE IN STEEL.
- GATHER ALL EXCESS WIRE AFTER MAKING ALL CONNECTIONS. BUNDLE AND SECURE WITH WIRE TIE 8343-01-000 OR 93147-01-000.

NOTES:

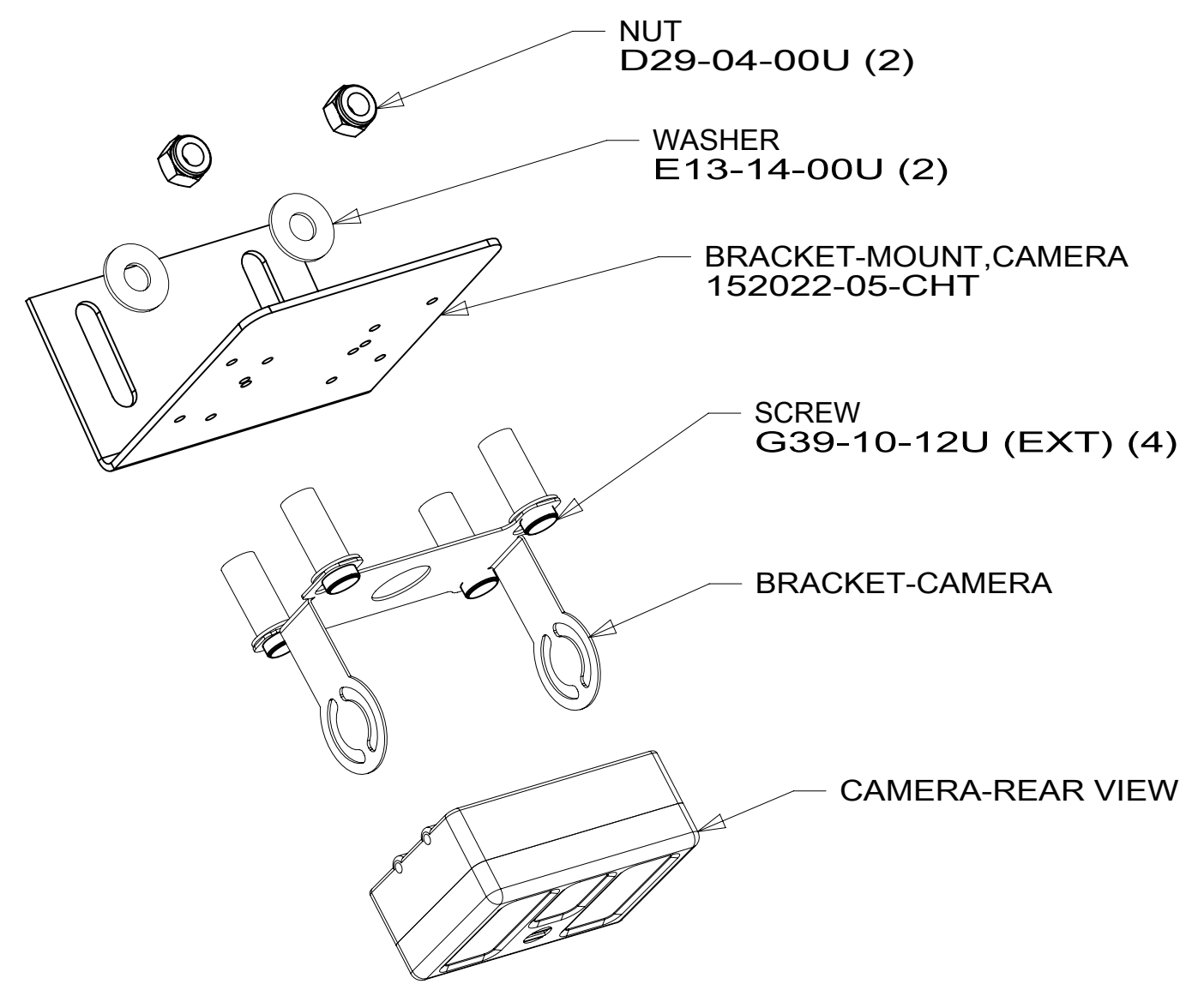
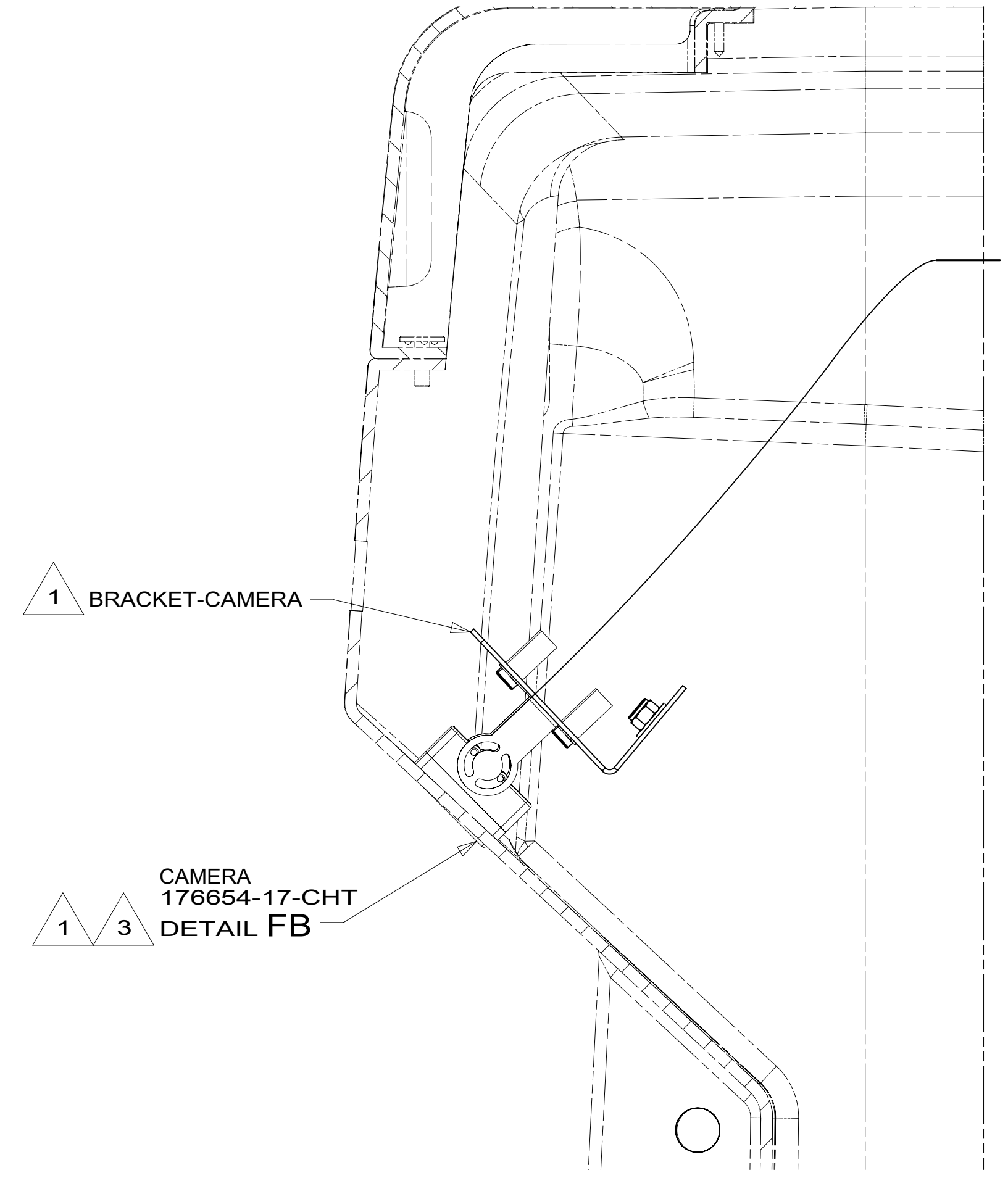
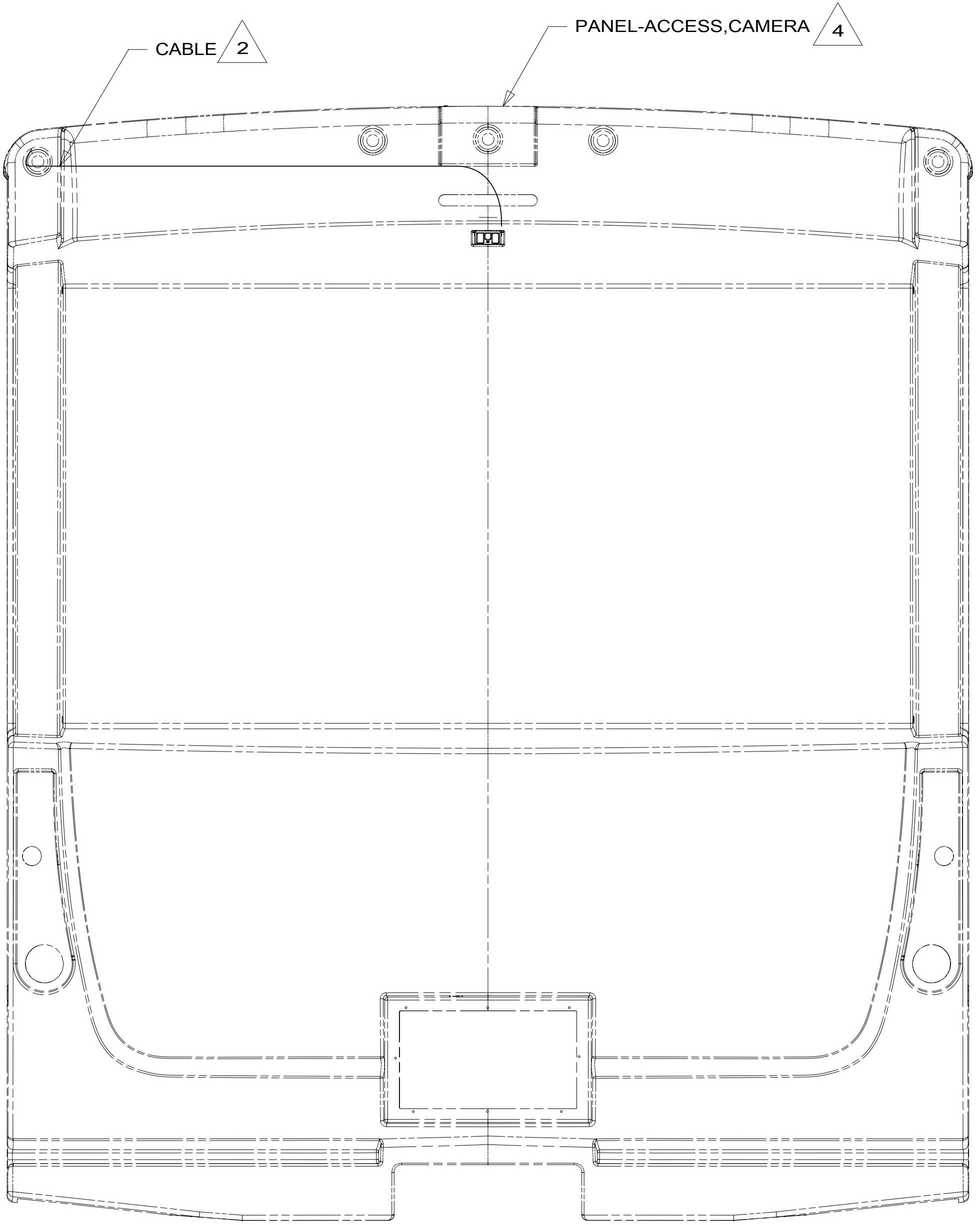
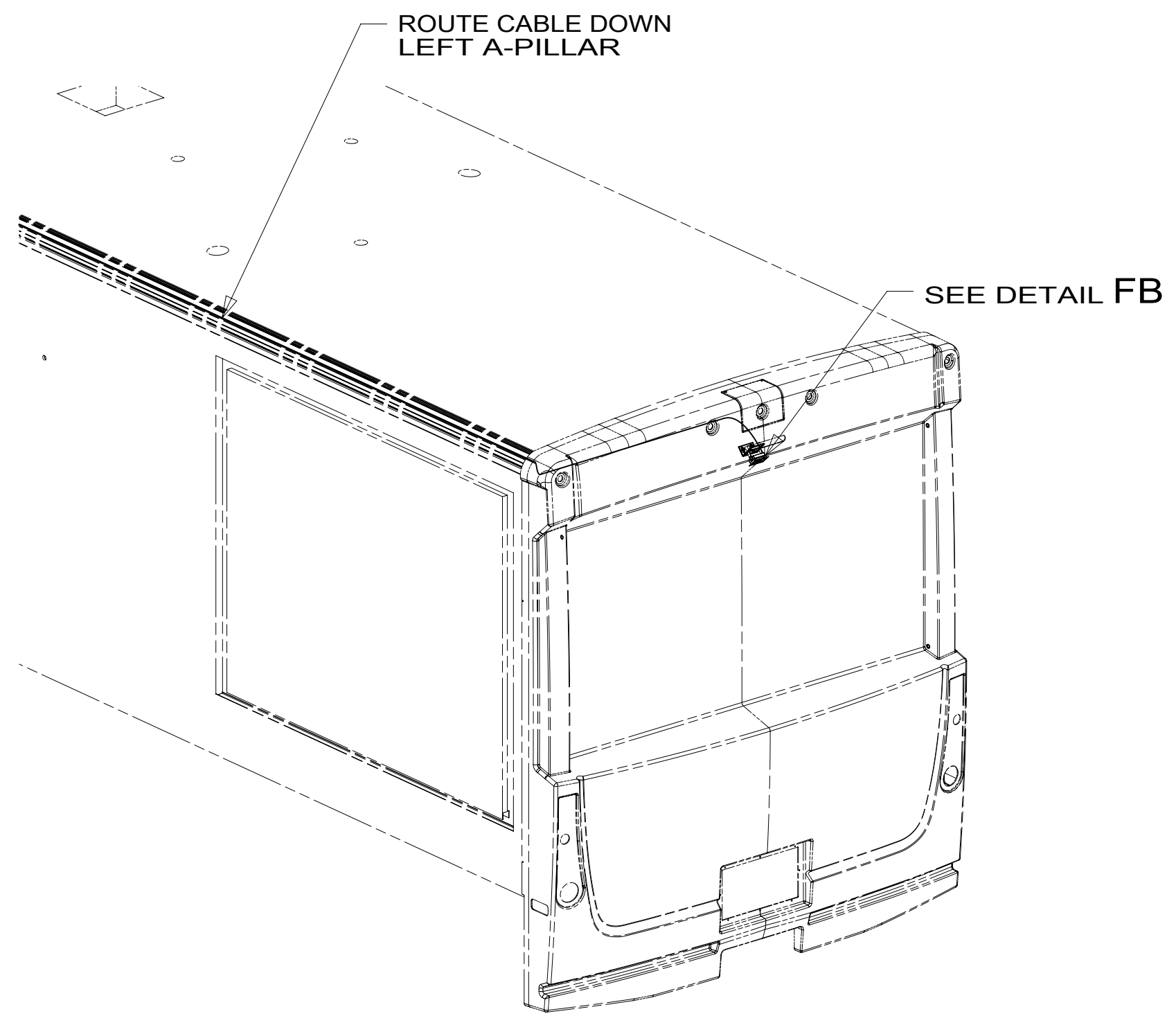
FOR ELECTRICAL TORQUE SPECIFICATIONS SEE DWG NO. 128783-01-000

FOR ELECTRICAL CALLOUTS SEE DWG NO. 121339-01-000

265 CODES/STANDARDS-CSA/CMVSS

1B1 CODES/STANDARDS USA

1B1 265	
DESCRIPTION:	
WIRING INSTL-FRONT END	
SHEET:	ITEM/PART NO:
5 OF 8	000211553 / 30162001000
REV	



DETAIL FB

- NOTES:
- 4 SEE PANEL-REAR CAP FOR LOCATION.
 - 3 ALIGN CAMERA IN CENTER OF OPENING AND ADJUST CAMERA VIEWING SO BACKWALL IS JUST VISIBLE IN MONITOR.
 - 2 RUN CABLE THRU LEFT-HAND COVE TO REAR OF UNIT. STANDARD ON ALL UNITS.
 - 1 PARTS SUPPLIED WITH CAMERA.

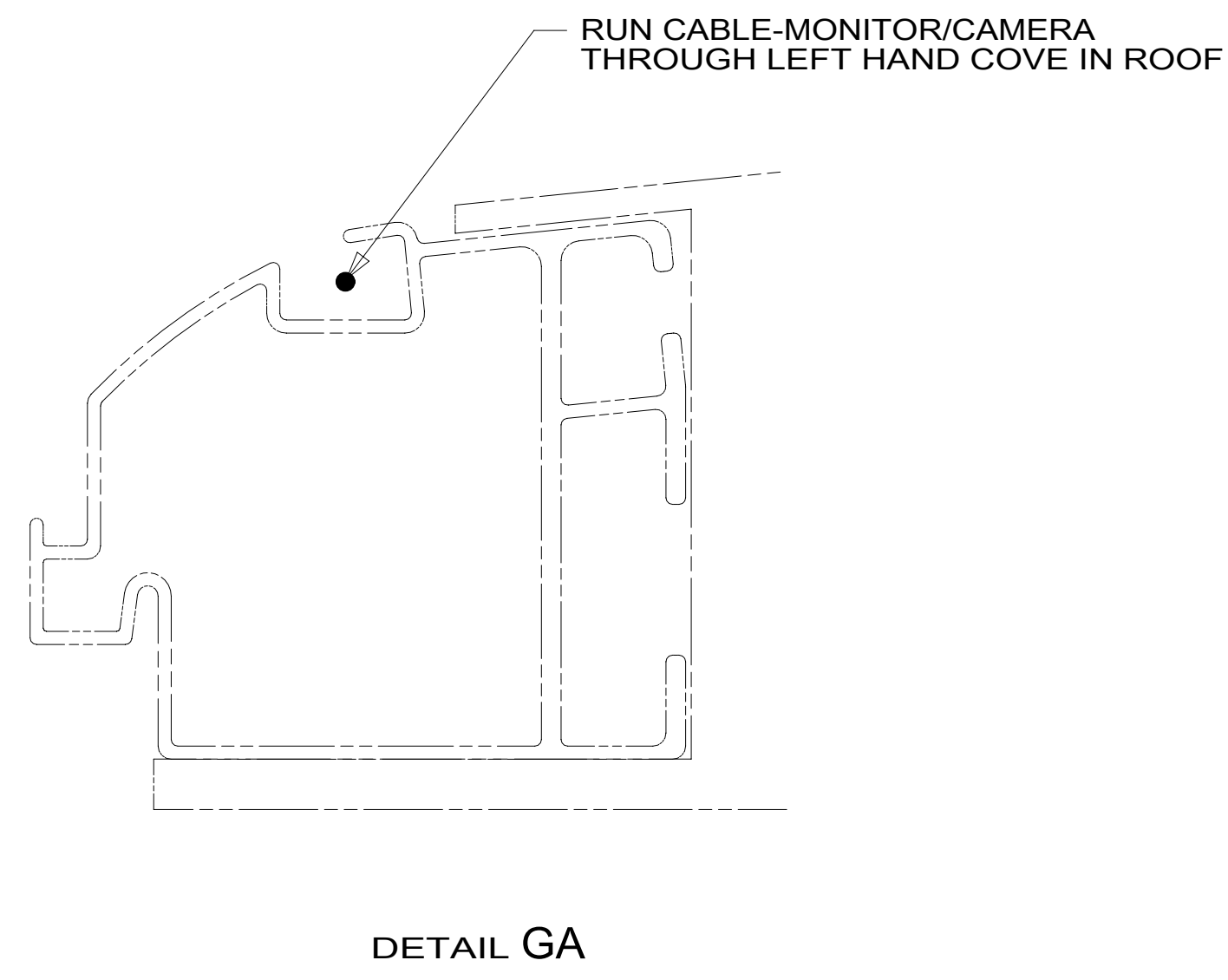
FOR ELECTRICAL TORQUE SPECIFICATIONS SEE DWG NO. 128783-01-000

FOR ELECTRICAL CALLOUTS SEE DWG NO. 121339-01-000

265 CODES/STANDARDS-CSA/CMVSS
1B1 CODES/STANDARDS USA

DESCRIPTION:	
WIRING INSTL-FRONT END	
SHEET: 6 OF 8	ITEM/PART NO: 000211553 / 30162001000
REV	

8 7 6 5 4 3 2 1



1 CABLE-MONITOR/CAMERA
180731-02-000
DETAIL GA

FILTER-NOISE
(REF)

TO SPLITTER
SEE DETAIL HA

2 TO CAMERA-SIDE
(PART OF MIRROR)
CABLE-CAMERA
144677-21-000

2 TO CAMERA-SIDE
(PART OF MIRROR)
CABLE-CAMERA
144677-21-000

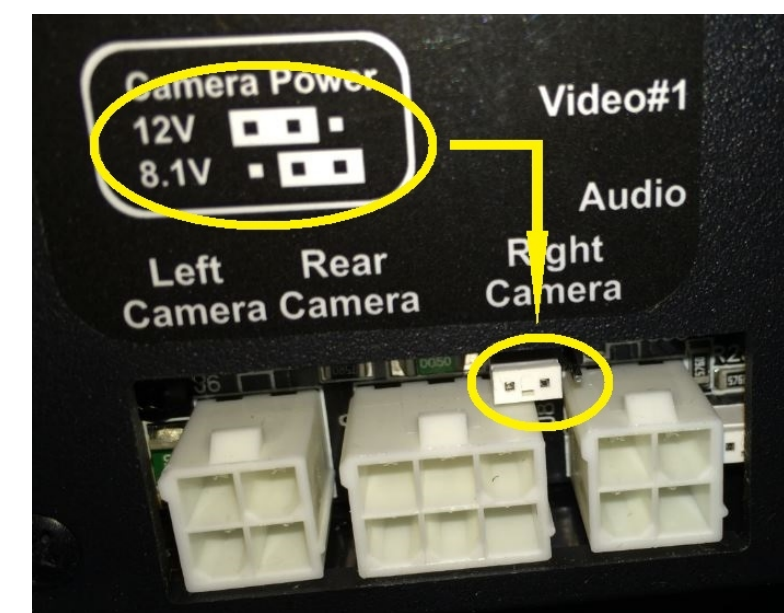
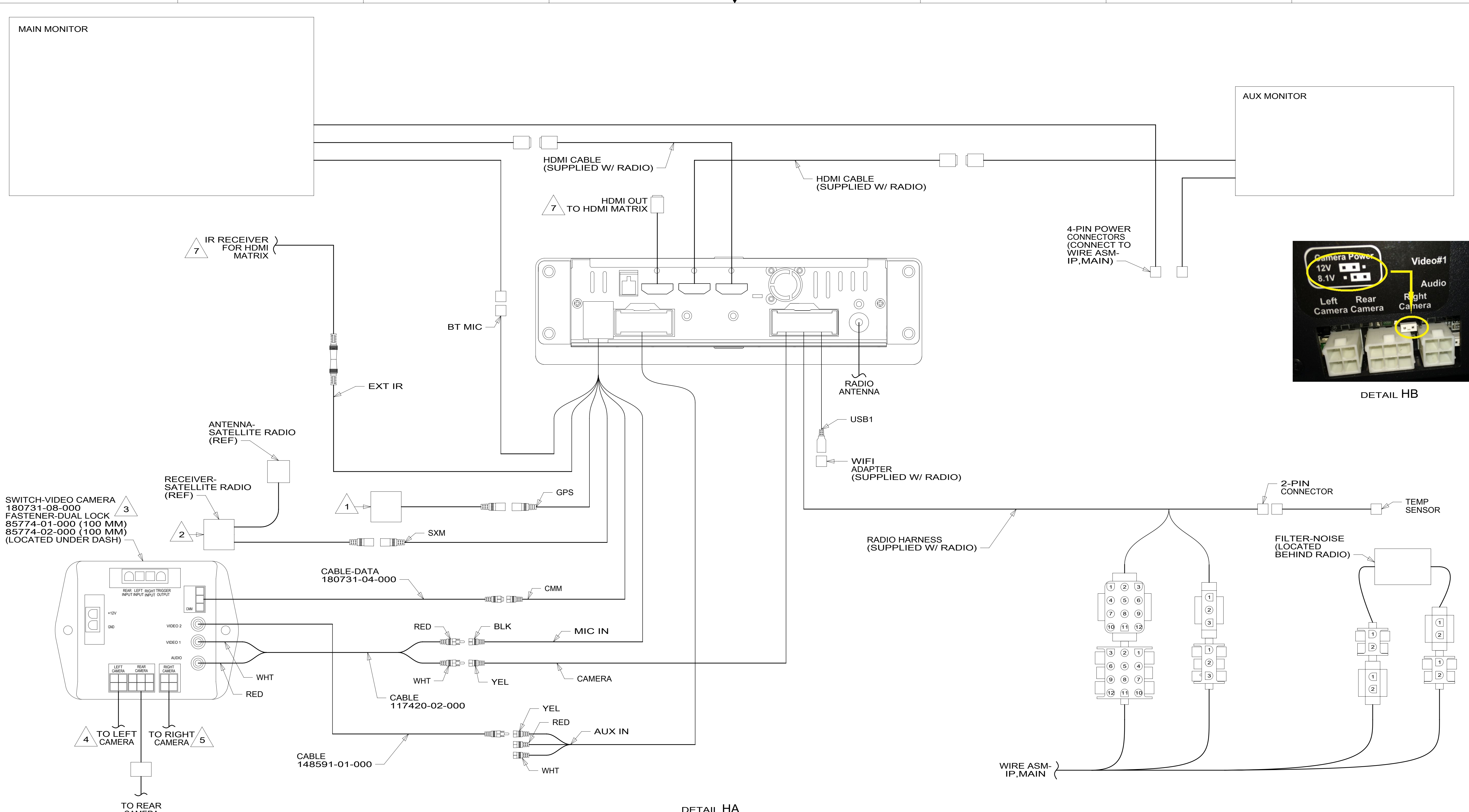
- NOTES:
- 2 CONNECT CABLE TO SIDE MOUNTED MIRROR.
 - 1 RUN CABLE FROM REAR CAMERA THRU LEFT HAND COVE TO FRONT OF UNIT AND DOWN LEFT A-PILLAR TO MONITOR.

FOR ELECTRICAL
TORQUE
SPECIFICATIONS
SEE DWG NO.
128783-01-000

FOR
ELECTRICAL
CALLOUTS
SEE DWG NO.
121339-01-000

DESCRIPTION: WIRING INSTL-FRONT END		
SHEET: 7 OF 8	ITEM/PART NO: 000211553 / 30162001000	REV

8 7 6 5 4 3 2 1



DETAIL HA

- NOTES:**
- 4 MARK LEFT CABLE WITH YELLOW TAPE 900000-07-000 NEXT TO CONNECTOR.
 - 3 ENSURE CAMERA POWER JUMPER IS IN 12 VOLT POSITION. MOVE TO 12 VOLT POSITION IF NECESSARY. SEE DEAL HB.
 - 2 WIRE TIE RECEIVER-SATELLITE RADIO AND SWITCH-VIDEO CAMERA TO DASH RADIO WIRING BEHIND THE RADIO.
 - 1 MOUNT TO DEFROST PLENUM NEAR WINDSHIELD.
 - 7 SEE WIRING INSTL-TV/DVD FOR ADDITIONAL INFORMATION.
 - 6. APPLY TAPE 8363-01-000 AS NECESSARY TO SECURE NON-LOCKING CONNECTIONS.
 - 5 MARK RIGHT CABLE WITH WHITE TAPE 900000-08-000 NEXT TO CONNECTOR.

- 15D GPS-NAVIGATION SYSTEM
- 265 CODES/STANDARDS-CSA/CMVSS
- 1B1 CODES/STANDARDS USA

FOR ELECTRICAL TORQUE SPECIFICATIONS SEE DWG NO. 128783-01-000

FOR ELECTRICAL CALLOUTS SEE DWG NO. 121339-01-000

DESCRIPTION: **WIRING INSTL-FRONT END**

SHEET: 8 OF 8 ITEM/PART NO.: 000211553 / 30162001000 REV: 1

20-Sep-2016