

- 4 SEE LOAD CENTER/ATS ASM FOR ADDITIONAL INFORMATION.
- 3 WIRE PASSES THROUGH FLOOR AT THIS POINT.

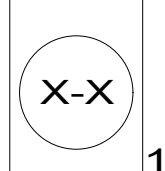
2. SEE WIRING DIAGRAM-BODY, 12V FOR ADDITIONAL INFORMATION.

1. ALL WIRES TO BE CLAMPED WITH CLAMP 10495-01-000 OR WIRE TIE 8343-02-000 EVERY 600MM UNLESS OTHERWISE SPECIFIED.

NOTES:

FOR ELECTRICAL TORQUE SPECIFICATIONS SEE DWG NO. 128783-01-000

FOR ELECTRICAL CALLOUTS SEE DWG NO. 121339-01-000



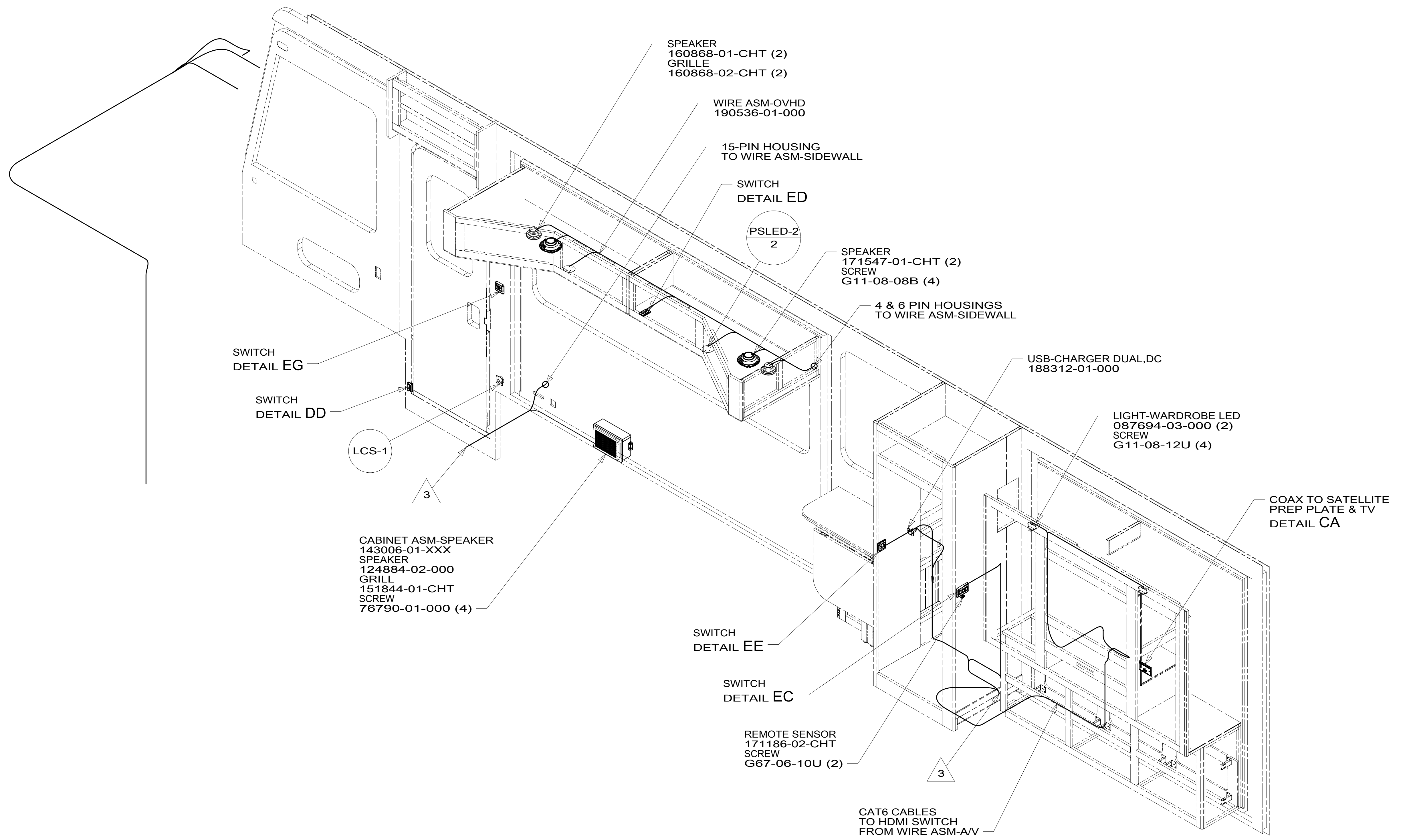
CONNECT ALL GROUNDS TO GROUND BAR

NEGATIVE BAR
 140031-01-CHT BOLT
 C26-06-12B (6)
 NUT
 D39-06-00B (6)
 STUD-ISOLATED
 86233-01-000 (2)
 NUT
 D34-06-00B (2) 265
 SCREW
 G67-10-12B (4) 1B1

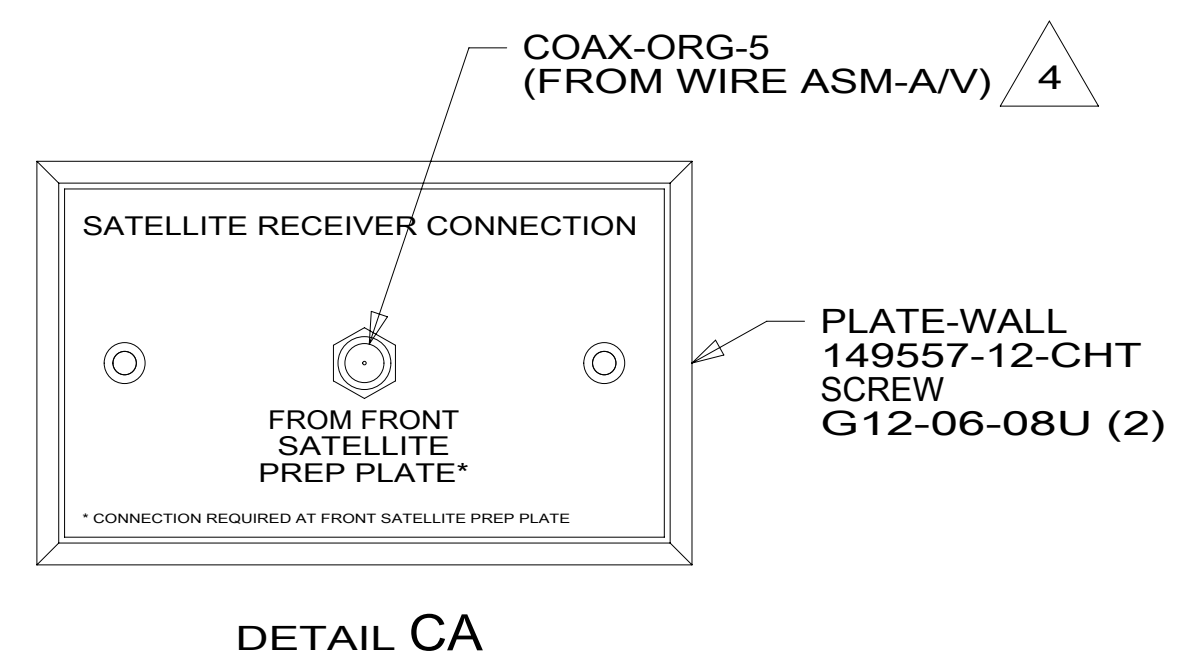
CODES/STANDARDS-CSA/CMVSS
 CODES/STANDARDS USA

DESCRIPTION:		1B1	265
WIRING INSTL-BODY, 12V			
SHEET:	ITEM/PART NO.:	REV:	
2 OF 8	000211551 / 30161701000		

8 7 6 5 4 3 2 1



- NOTES:
- 4 CONNECTS TO REAR OF SATELLITE PREP PLATE.
 - 3 WIRE PASSES THROUGH FLOOR AT THIS POINT.
 - 2. SEE WIRING DIAGRAM-BODY, 12V FOR ADDITIONAL INFORMATION.
 - 1. ALL WIRES TO BE CLAMPED WITH CLAMP 10495-01-000 OR WIRE TIE 8343-02-000 EVERY 600MM UNLESS OTHERWISE SPECIFIED.



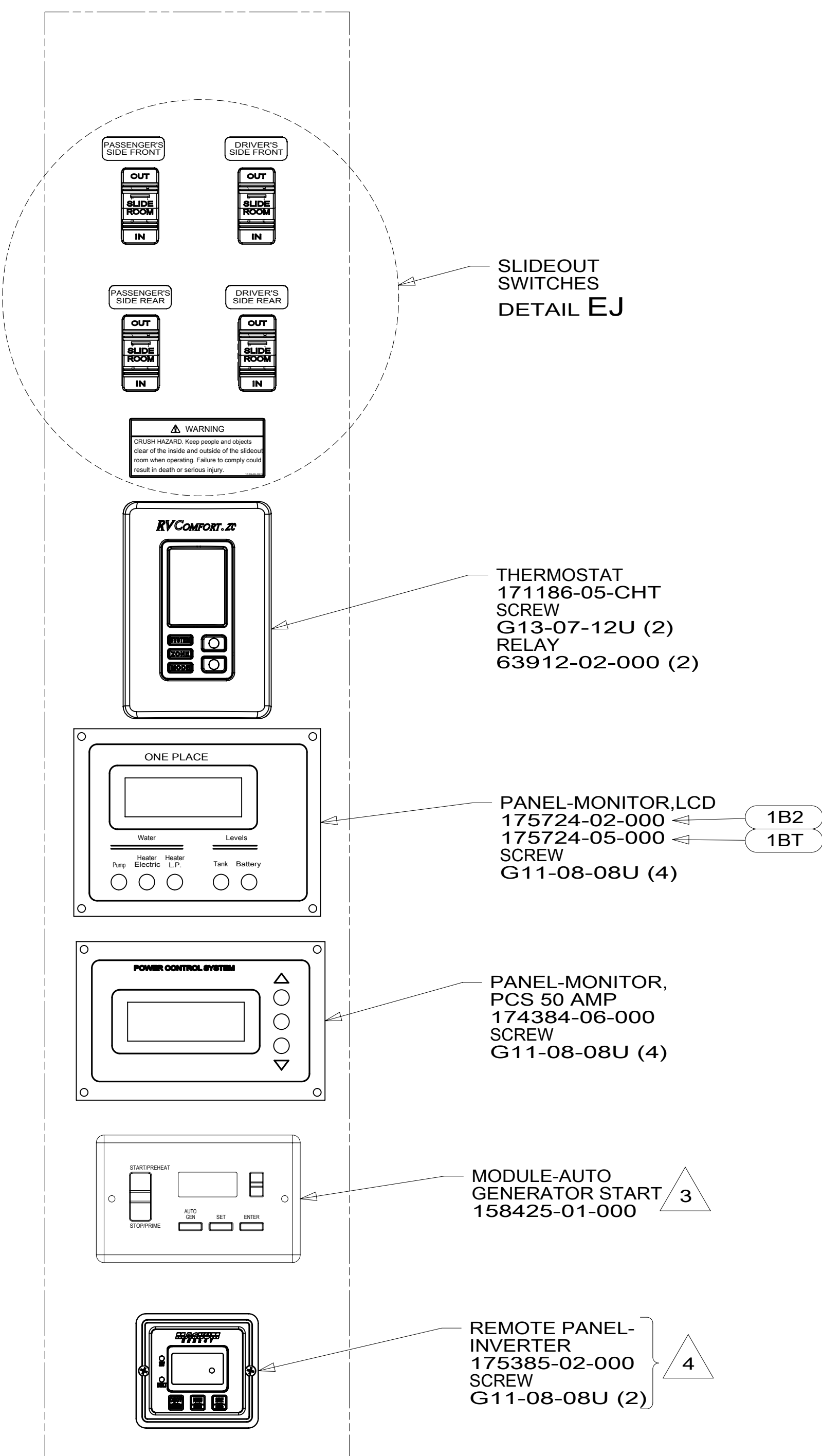
FOR ELECTRICAL TORQUE SPECIFICATIONS SEE DWG NO. 128783-01-000

FOR ELECTRICAL CALLOUTS SEE DWG NO. 121339-01-000

- 265 CODES/STANDARDS-CSA/CMVSS
- 1B1 CODES/STANDARDS USA

DESCRIPTION:		1B1 265	
WIRING INSTL-BODY, 12V			
SHEET:	ITEM/PART NO.:	REV	
3 OF 8	000211551 / 30161701000		

8 7 6 5 4 3 2 1 07-Oct-2016



SLIDEOUT SWITCHES
DETAIL EJ

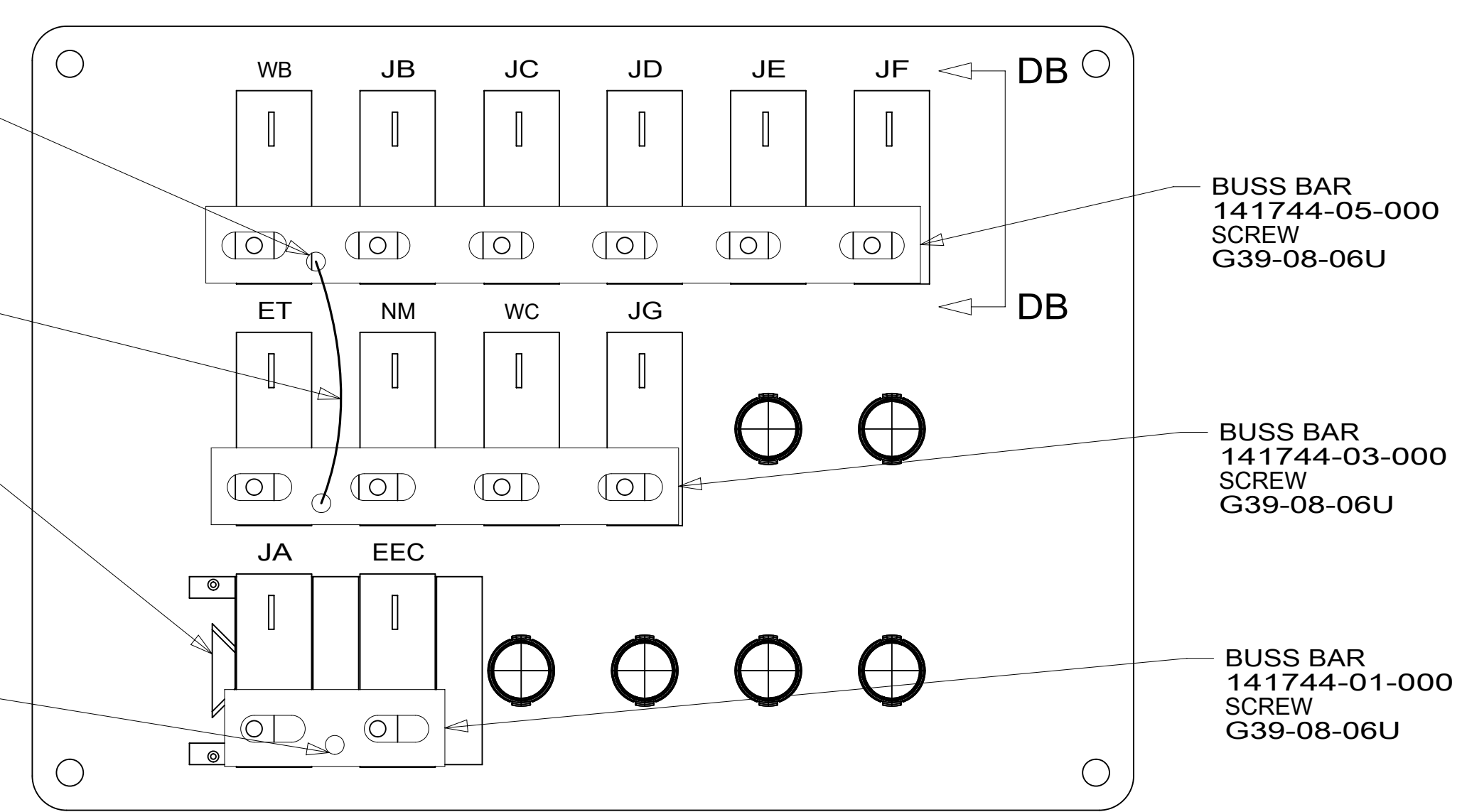
THERMOSTAT
171186-05-CHT
SCREW
G-13-07-12U (2)
RELAY
63912-02-000 (2)

PANEL-MONITOR,LCD
175724-02-000
175724-05-000
SCREW
G11-08-08U (4)

PANEL-MONITOR,
PCS 50 AMP
174384-06-000
SCREW
G11-08-08U (4)

MODULE-AUTO
GENERATOR START
158425-01-000

REMOTE PANEL-
INVERTER
175385-02-000
SCREW
G11-08-08U (2)



J 6 BLK
FROM WIRE
ASM-CHASSIS
SCREW
G39-08-06U

M 6 BLK
FROM WIRE
ASM-COACH
SCREW
G39-08-06U

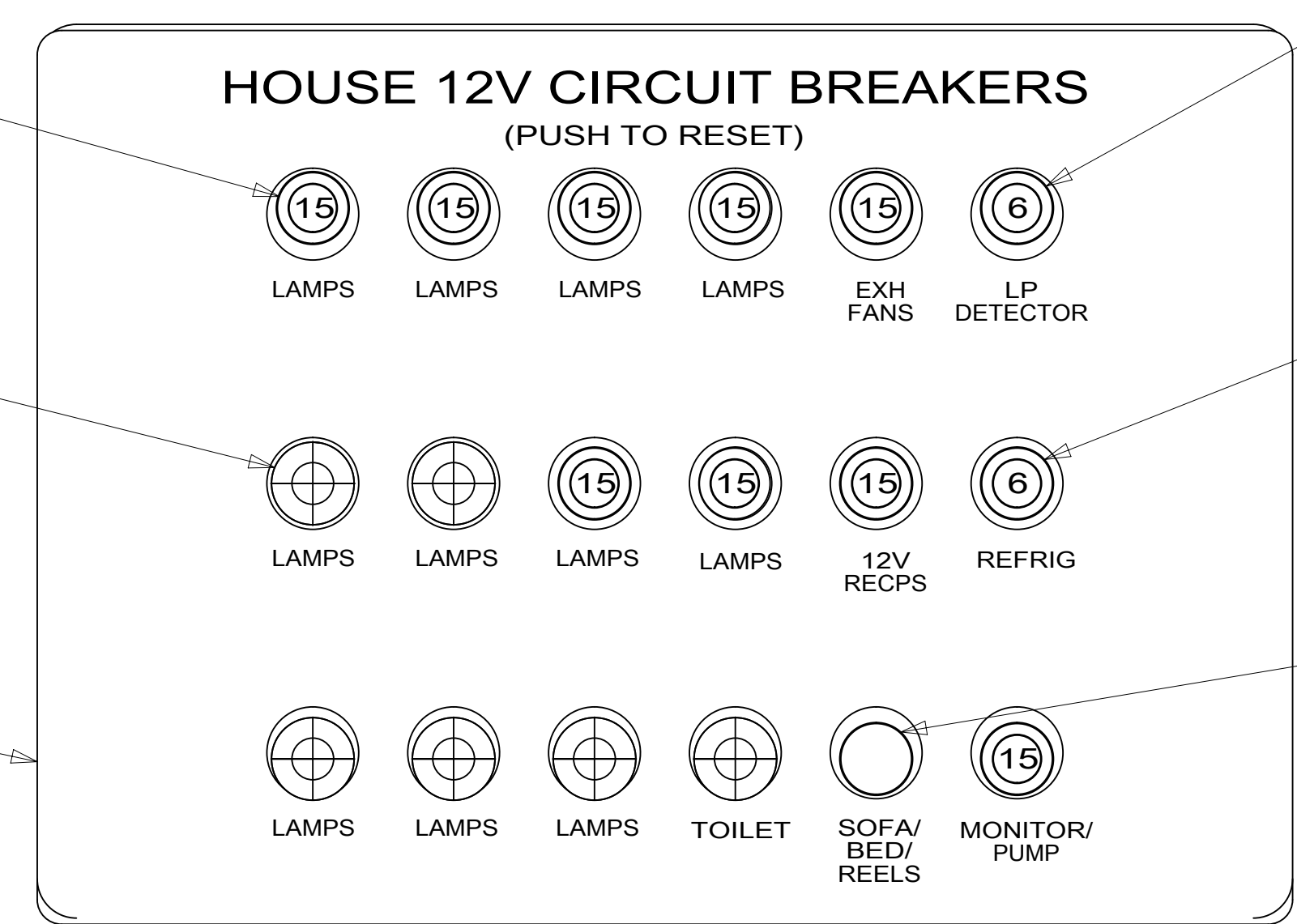
SPACER
141789-01-000 (2)

K 8 BLK
FROM WIRE
ASM-CHASSIS
SCREW
G39-08-06U

BUSS BAR
141744-05-000
SCREW
G39-08-06U

BUSS BAR
141744-03-000
SCREW
G39-08-06U

BUSS BAR
141744-01-000
SCREW
G39-08-06U



CIRCUIT BREAKER
93654-02-000 (9)
(15 AMP)
SCREW
G52-06-04U (9)

PLUG
81211-06-000 (6)

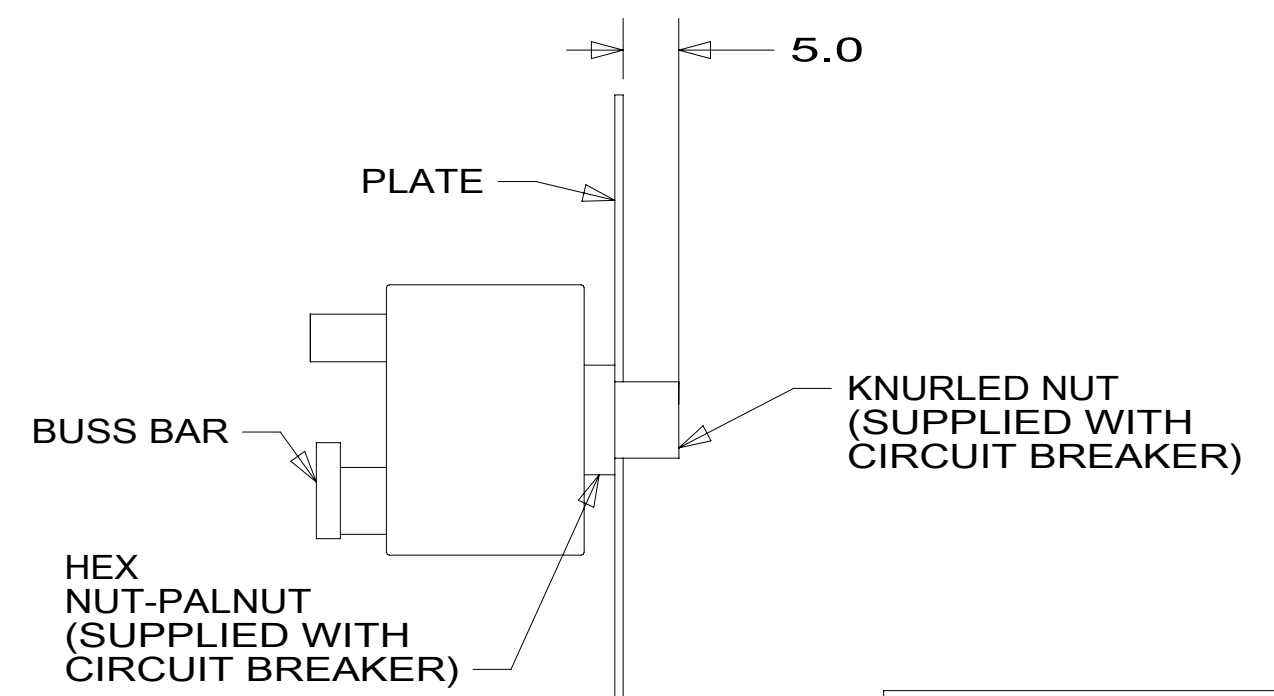
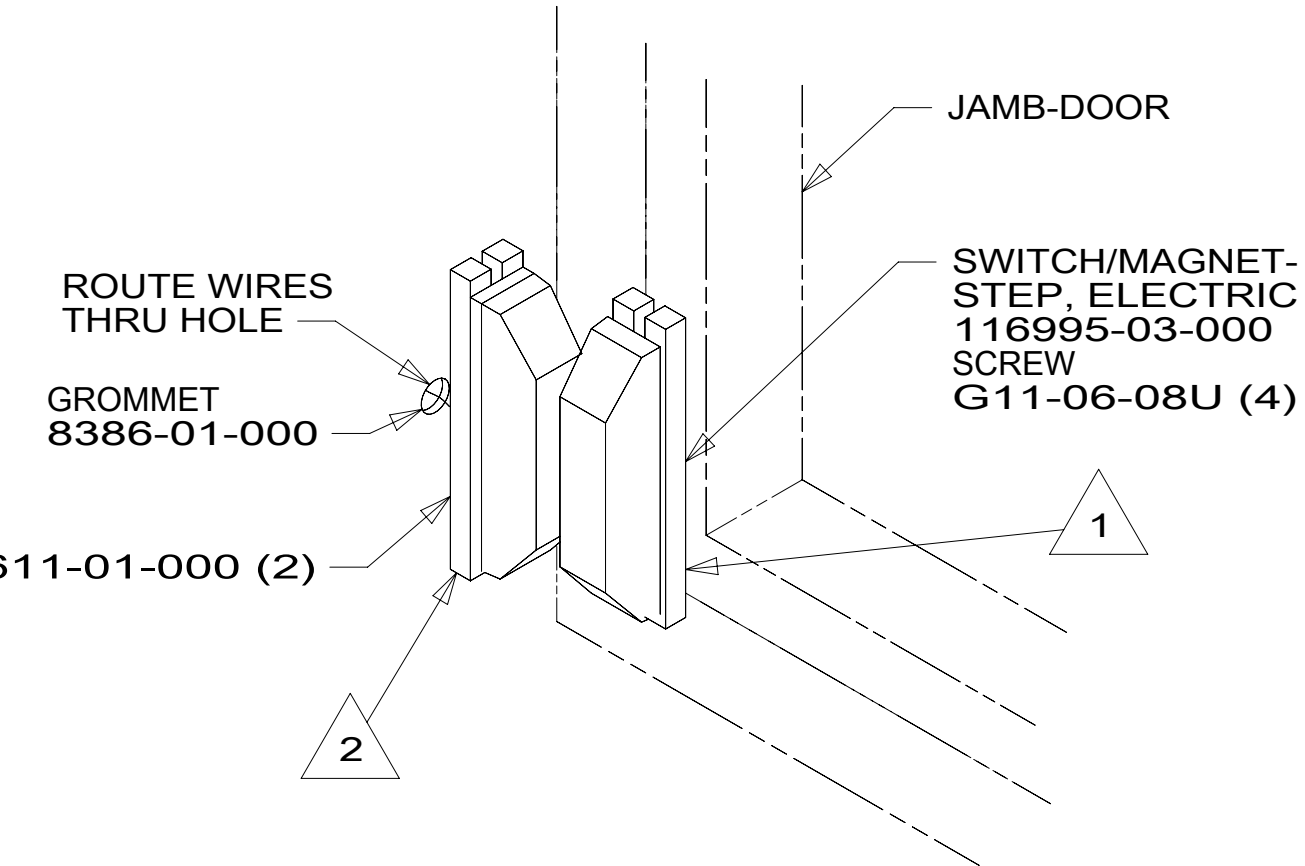
PLATE
139067-06-CHT
LABEL
92547-15-000
SCREW
G11-10-12U (4)

CIRCUIT BREAKER
93654-01-000
(6 AMP)
SCREW
G52-06-04U

CIRCUIT BREAKER
93654-01-000
(6 AMP)
SCREW
G52-06-04U
PLUG
81211-06-000

CIRCUIT BREAKER
182283-01-000
(20 AMP)
SCREW
G52-06-04U

- NOTES:
- 5 REMOVE SCREWS FROM MAGNET SWITCH TO INSTALL LOCK WASHER AND RING TERMINALS.
 - 4 SET 'BAT TYPE' TO 'AGM2'
SET 'LBCO' TO '11VDC'
SET 'BAT AHRS' TO '200 AH' WITH 79W
SET 'BAT AHRS' TO '400 AH' WITH 15L
SEE OPERATORS MANUAL FOR SETUP PROCEDURE.
 - 3 SET 'GEN TYPE' TO 'GAS/LP'
SET 'SAFE TYPE' TO 'IGNITION'
SET 'SPSENSE' TO 'AFTER'
SEE OPERATORS MANUAL FOR SETUP PROCEDURE.
 - 2 MOUNT SWITCH AND SPACER TO BLOCK ON JAMB
ADJUST HEIGHT TO MATCH MAGNET.
 - 1 MOUNT MAGNET USING PILOT HOLES IN SCREEN
DOOR FRAME. MOUNT WITH MAGNET TOWARD SWITCH.



FOR ELECTRICAL
TORQUE
SPECIFICATIONS
SEE DWG NO.
128783-01-000

FOR ELECTRICAL
CALLOUTS
SEE DWG NO.
121339-01-000

- 79W REFRIGERATOR-4 DOOR
- 15L RESIDENTIAL REFRIGERATOR PKG
- 1B2 WTR HTR-10GAL/ELEC/LP/MTRAD
- 1BT WATER HEATER, TANKLESS
- 79W REFRIGERATOR-4 DOOR
- 15L RESIDENTIAL REFRIGERATOR PKG
- 265 CODES/STANDARDS-CSA/CMVSS
- 1B1 CODES/STANDARDS USA

DESCRIPTION: WIRING INSTL-BODY, 12V	
SHEET: 4 OF 8	ITEM/PART NO: 000211551 / 30161701000
REV 07-Oct-2016	

8 7 6 5 4 3 2 1

D

D

C

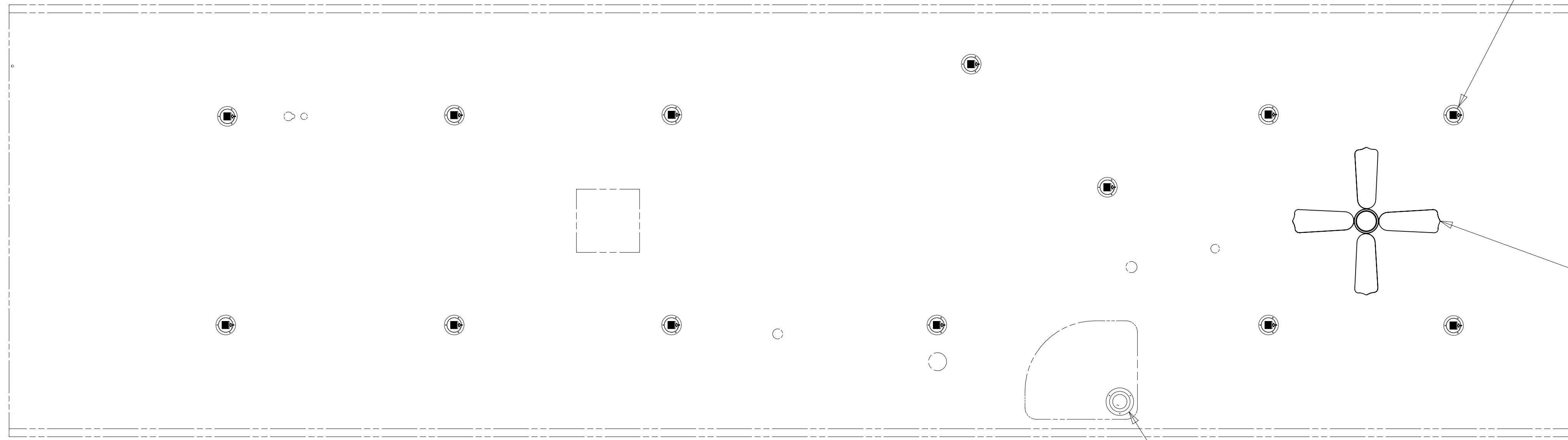
C

B

B

A

A

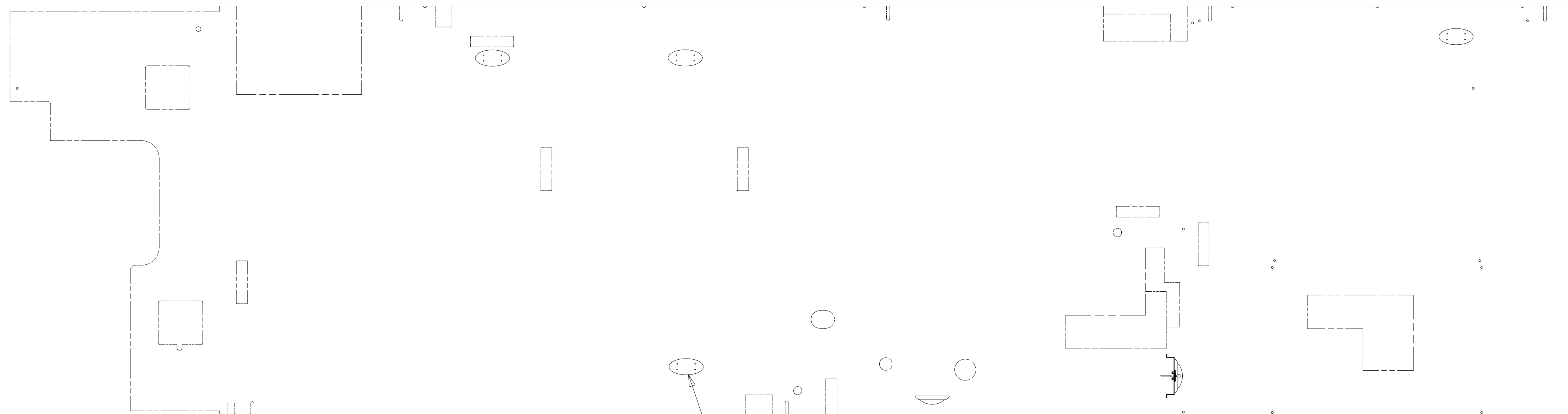


PRLED-4
13

LSH-3

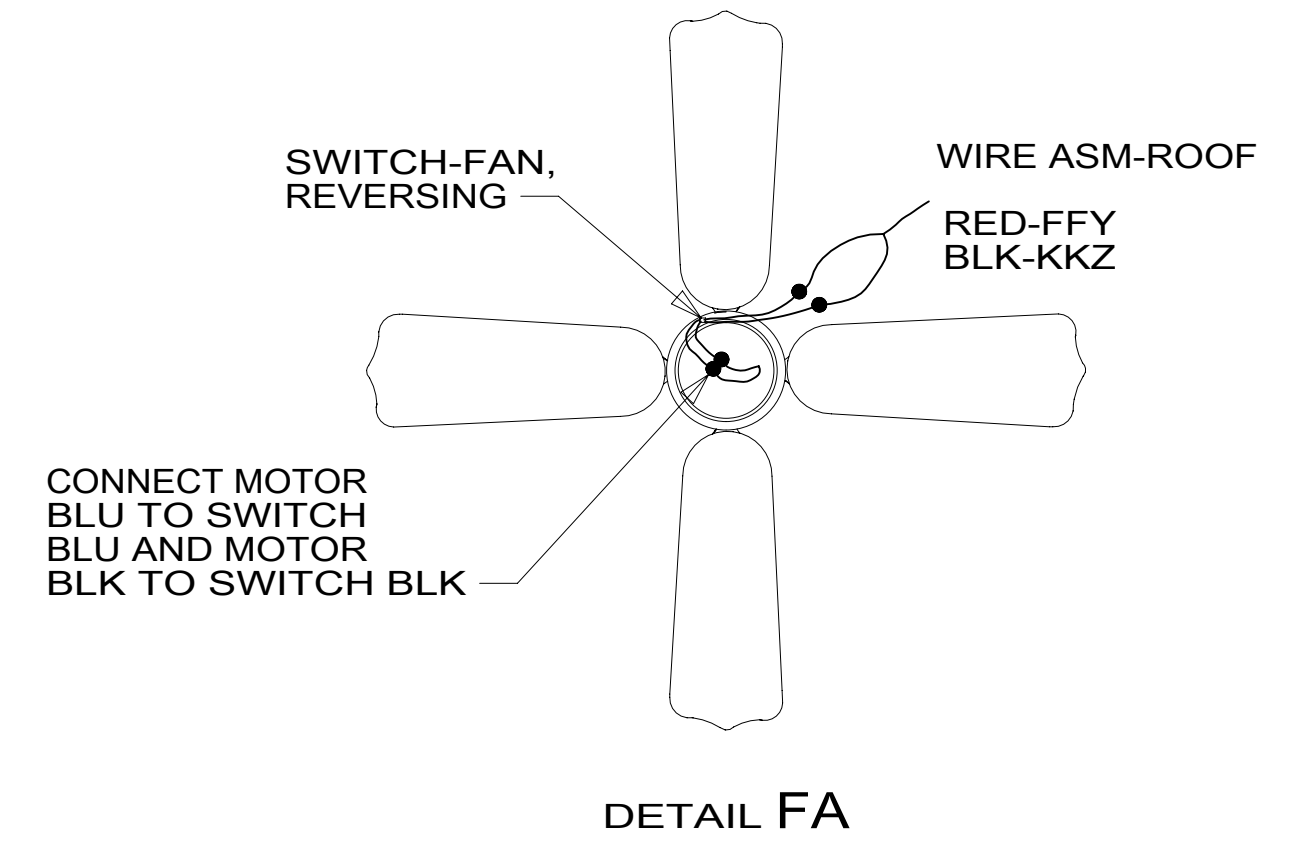
FAN-CEILING
139134-01-CHT
SCREW
G11-10-16B (3)
CONNECTOR
58028-01-000 (2)
DETAIL FA

41Y 1 2



LO1-3
6

WASHER-PLASTIC
180671-02-CHT (4)
SCREW
G11-08-08U (4)



DETAIL FA

- NOTES:
- 2 CENTER FAN OVER 25MM HOLE IN ROOF.
 - 1 APPLY LOCTITE P/N 62917-06-000 TO FAN BLADE MOUNTING NUT THREADS.

FOR ELECTRICAL TORQUE SPECIFICATIONS SEE DWG NO. 128783-01-000

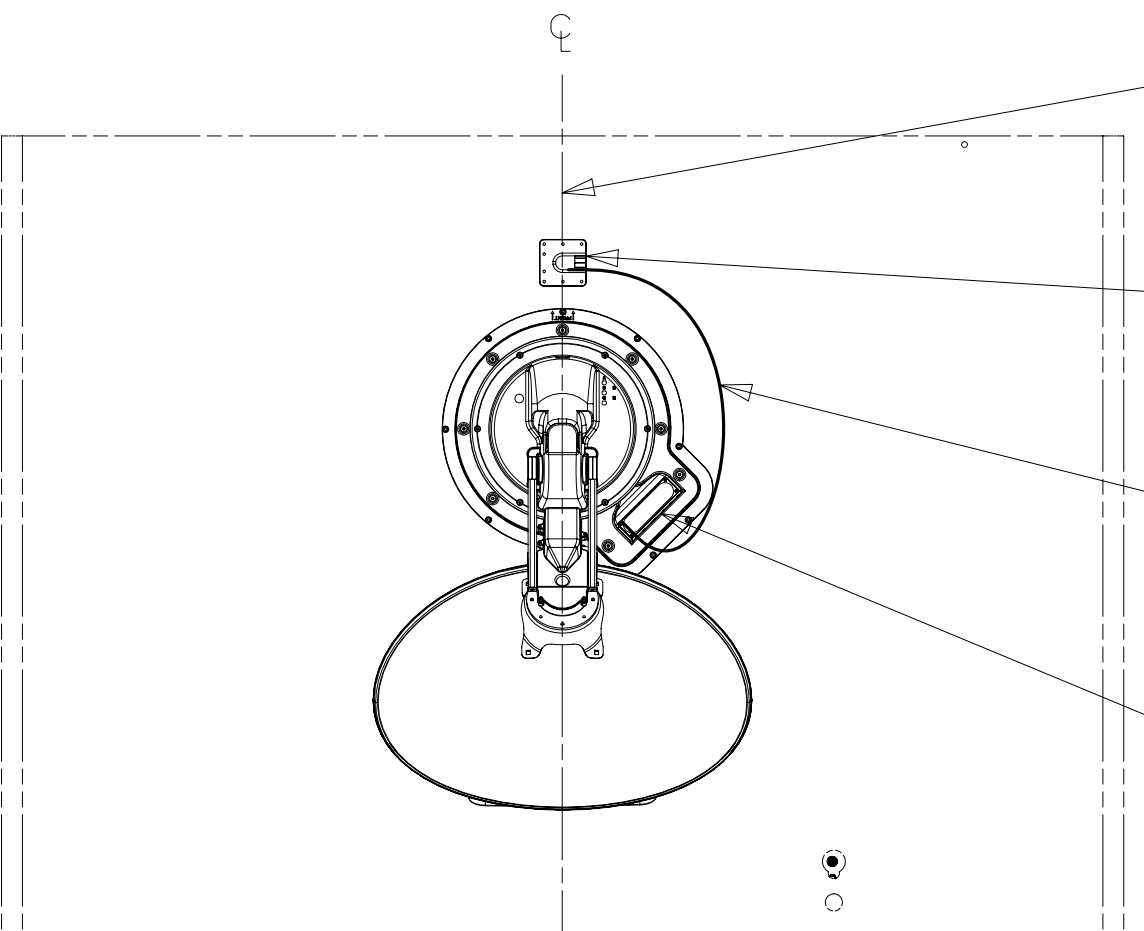
FOR ELECTRICAL CALLOUTS SEE DWG NO. 121339-01-000

- 41Y FAN - CEILING_BEDROOM
- 265 CODES/STANDARDS-CSA/CMVSS
- 1B1 CODES/STANDARDS USA

DESCRIPTION:		1B1 265	
WIRING INSTL-BODY, 12V			
SHEET:	ITEM/PART NO.:	REV	
6 OF 8	000211551 / 30161701000		

8 7 6 5 4 3 2 1 07-Oct-2016

8 7 6 5 4 3 2 1



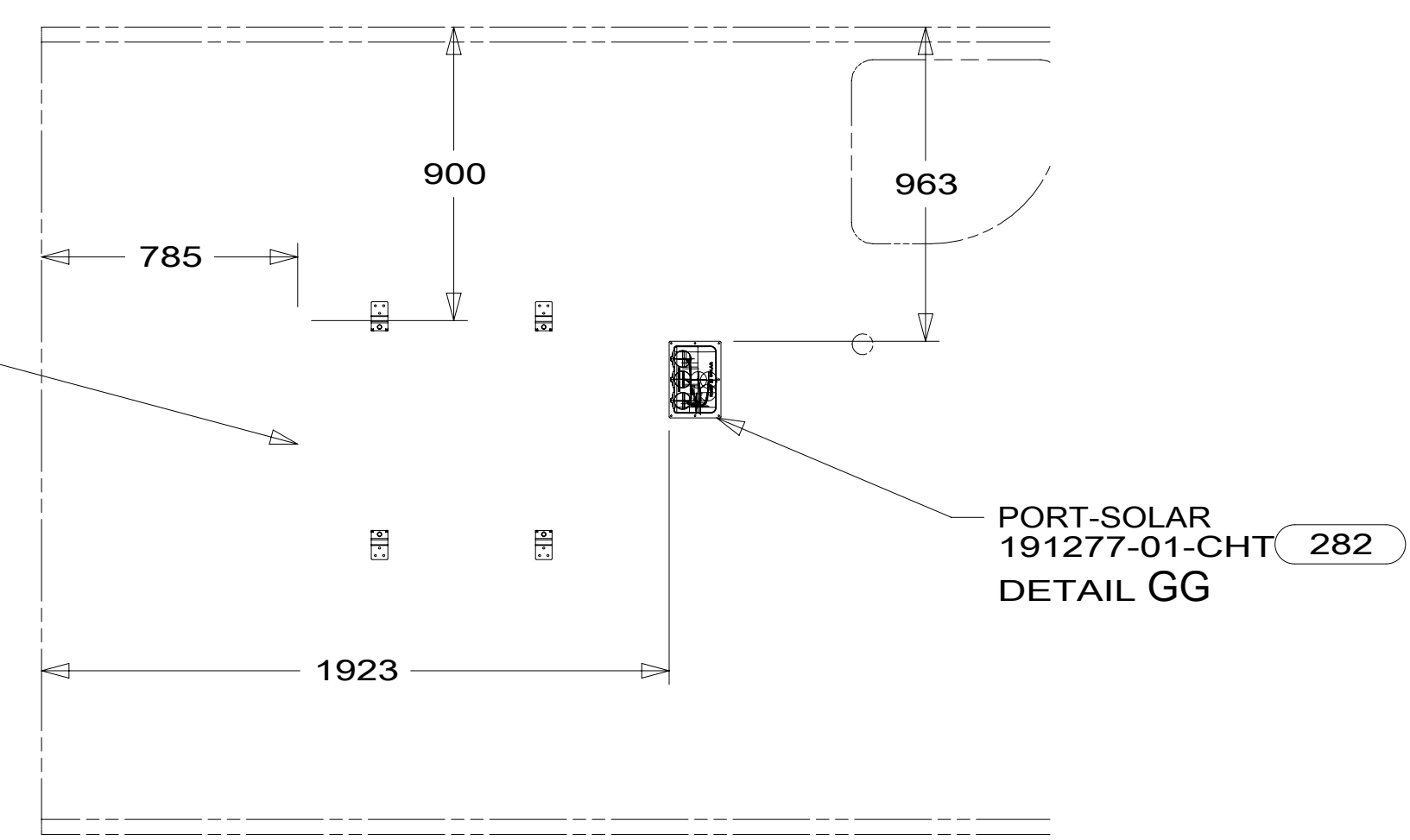
THE SATELLITE DISH AND WIRE CONNECTIONS ARE TO BE PLACED ON THE CENTERLINE OF THE MOTORHOME FACING FORWARD.

SEPARATE CABLES AND INSTALL WIRE COVER OVER HOLE IN ROOF ASM WITH CABLES EXITING ON PASSENGERS SIDE.

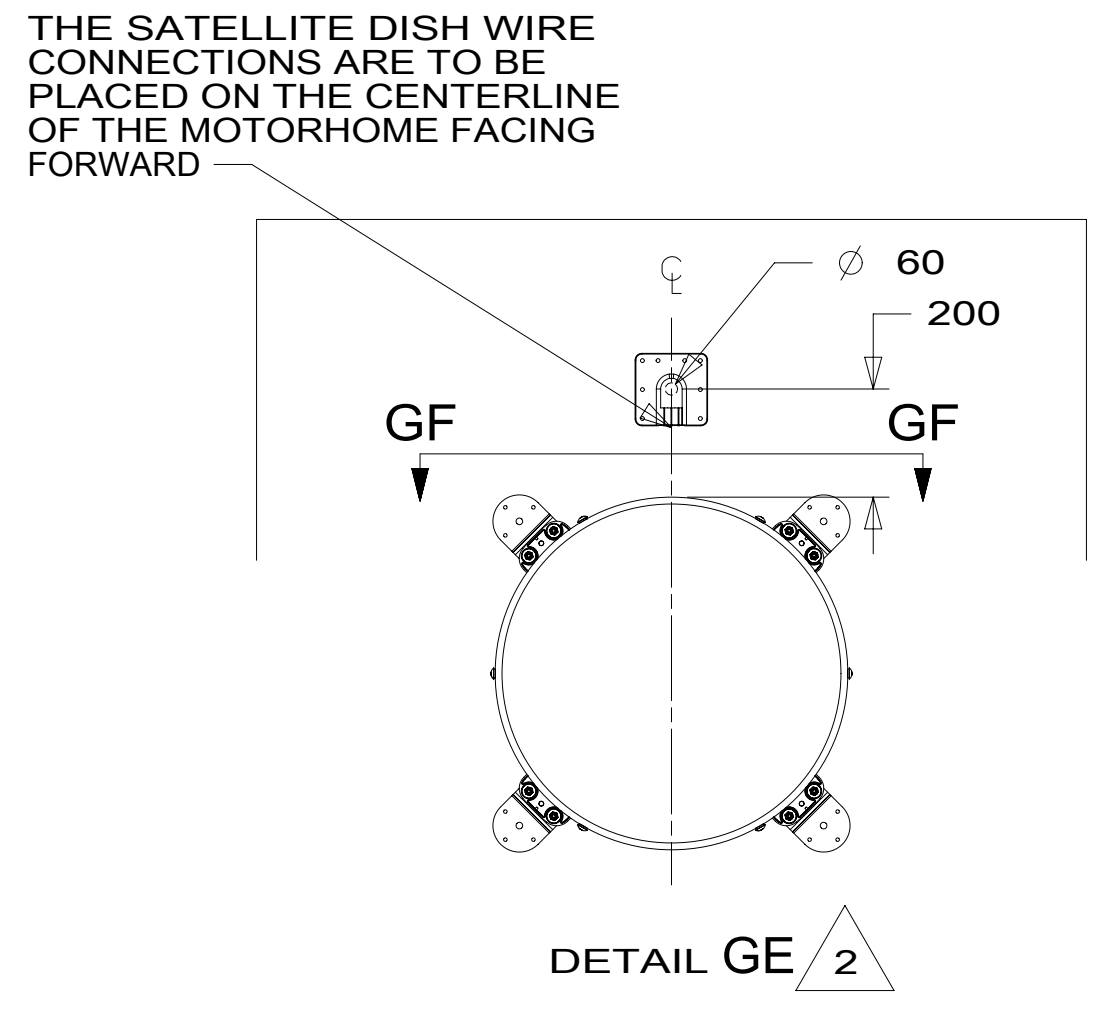
WHEN APPLYING ROOF SEALANT TO SATELLITE DISH, PLACE ROOF SEALANT HERE (APPROX. 75MM WIDE) AND PUSH THE CABLES INTO THE SEALANT TO STABILIZE THEM.

CONNECT CABLE ASM-COAX FROM ROOF ASM TO COAX CABLES ON SATELLITE DISH AND CONNECT 10' CABLE-DATA FROM ROOF ASM TO DATA CABLE FROM SATELLITE DISH AND PLACE ALL CONNECTIONS BACK INTO ROOF ASM.

DETAIL GB

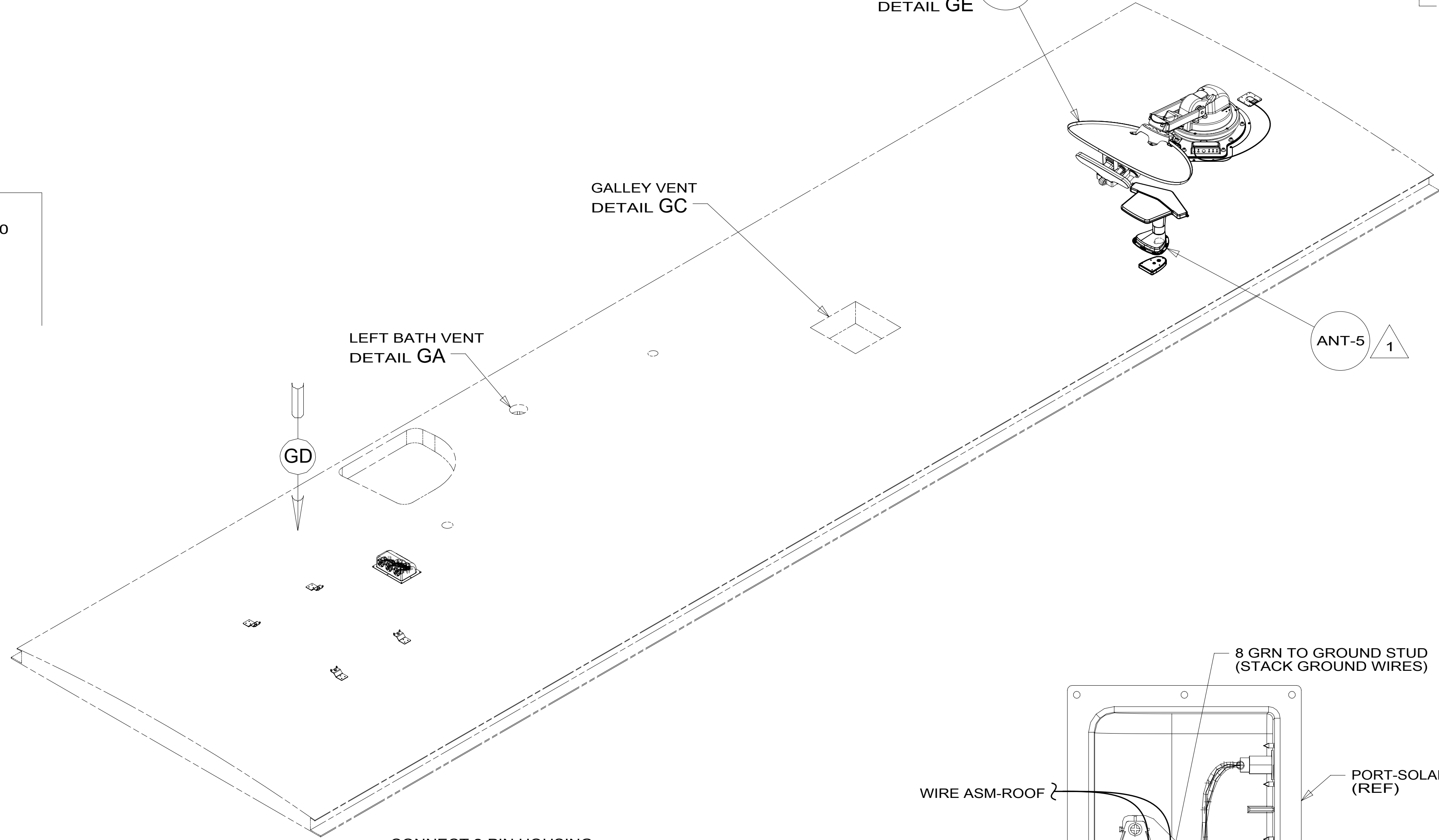


DETAIL GD



THE SATELLITE DISH WIRE CONNECTIONS ARE TO BE PLACED ON THE CENTERLINE OF THE MOTORHOME FACING FORWARD

DETAIL GE 2



GALLEY VENT
DETAIL GC

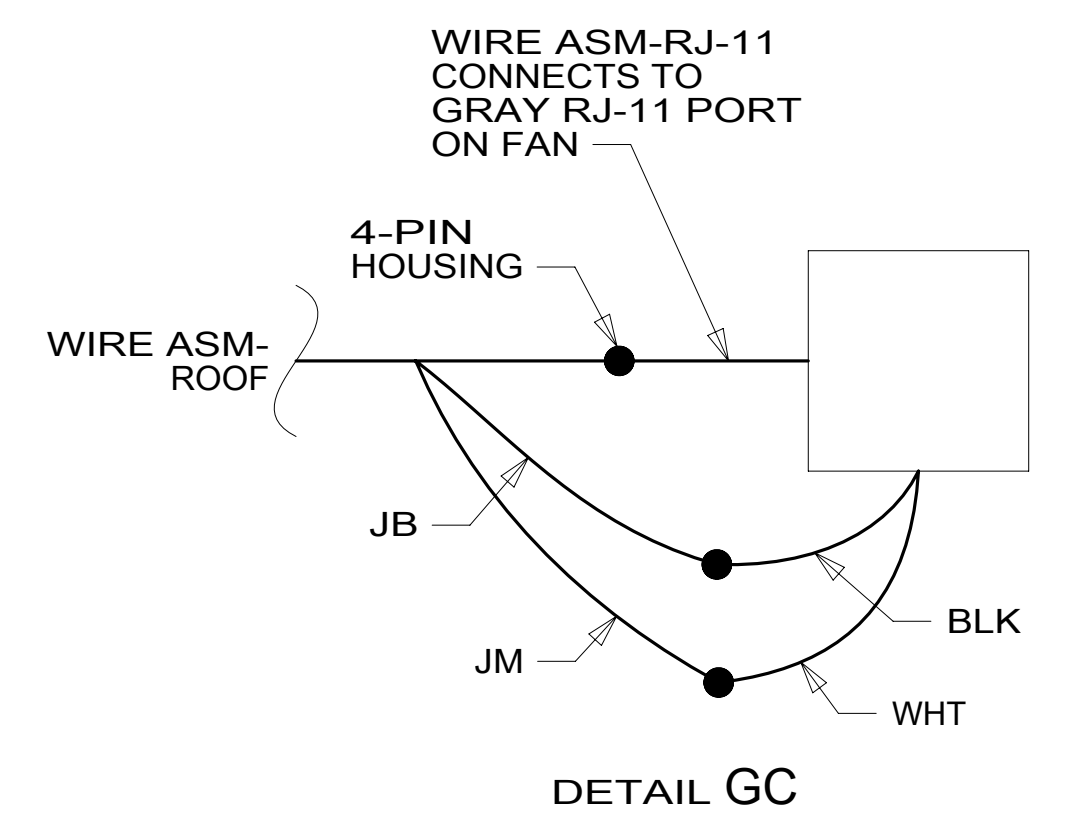
LEFT BATH VENT
DETAIL GA

GD

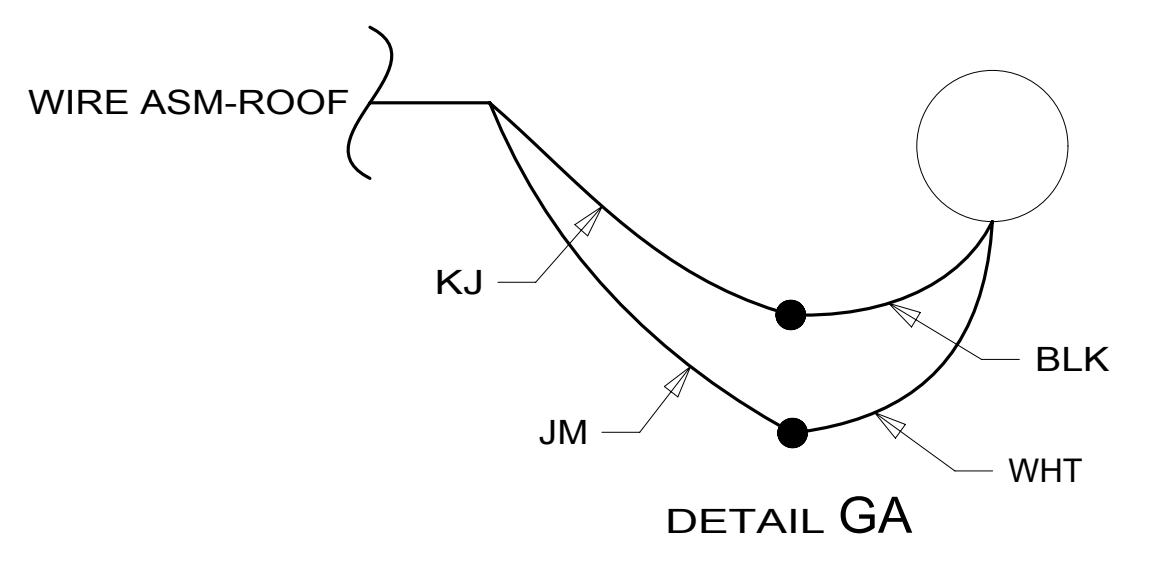
783 DA-4 1
DETAIL GB

48P DI-3 1
DETAIL GE

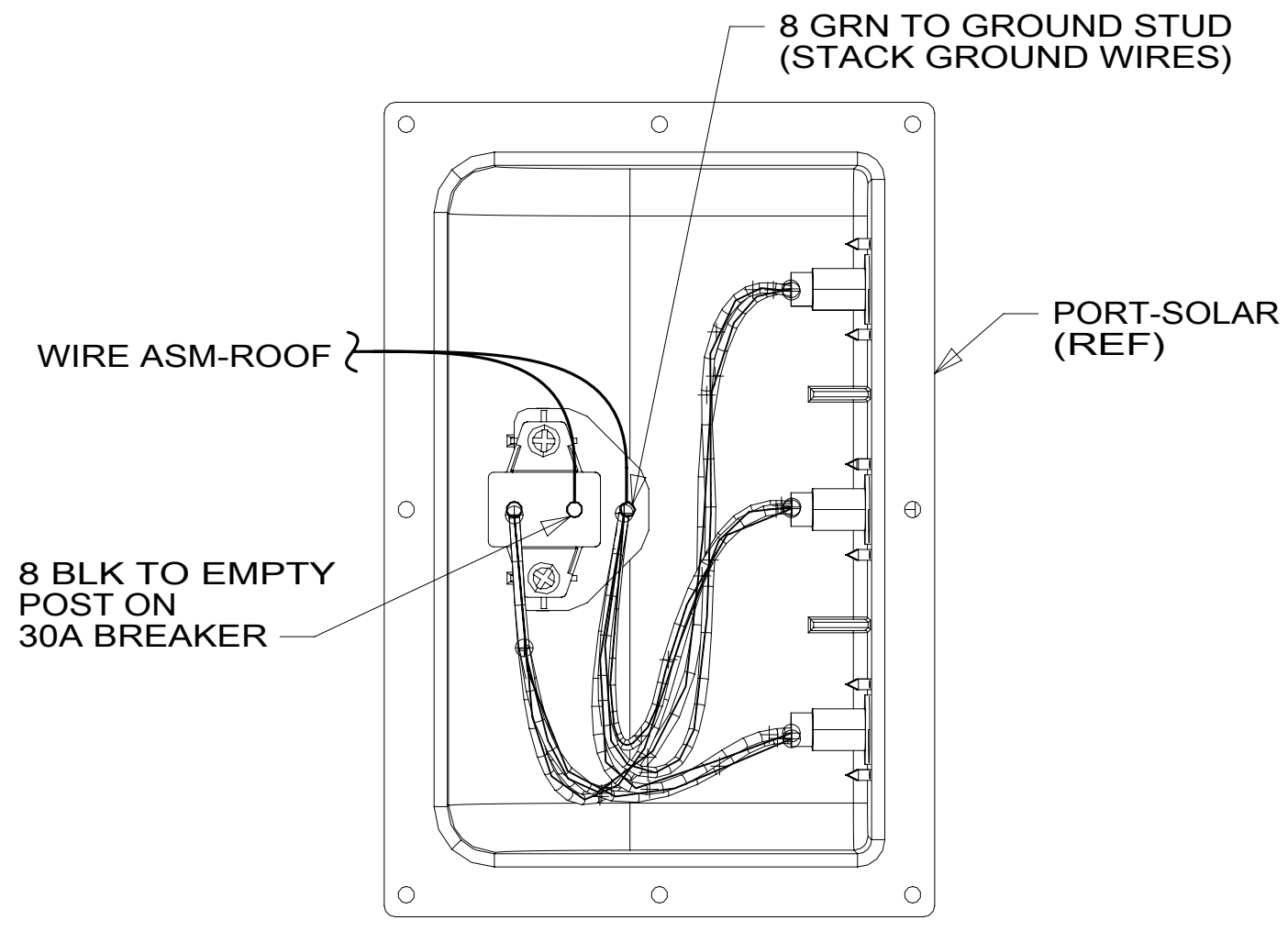
ANT-5 1



DETAIL GC



DETAIL GA

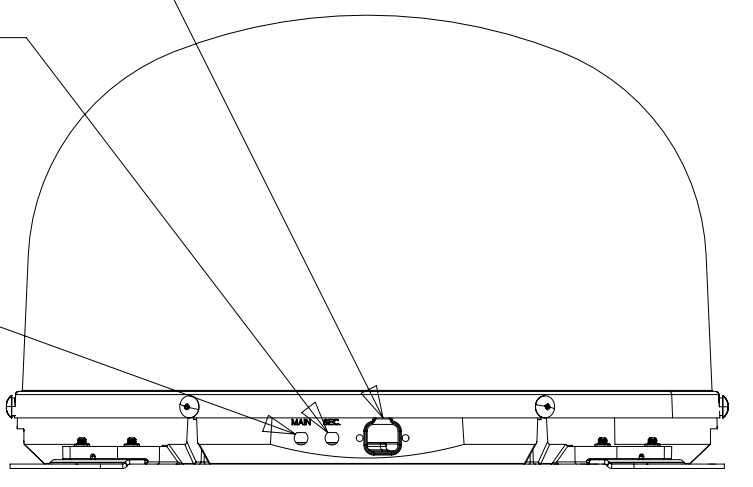


DETAIL GG

CONNECT 2-PIN HOUSING FROM ROOF ASM TO SATELLITE DISH HERE AND ADD CONVOLUTED TUBING

CONNECT CABLE ASM COAX (ORG-2) FROM ROOF ASM TO SEC INPUT ON SATELLITE DISH

CONNECT CABLE ASM COAX (ORG) FROM ROOF ASM TO MAIN INPUT ON SATELLITE DISH



VIEW GF-GF

FOR ELECTRICAL TORQUE SPECIFICATIONS SEE DWG NO. 128783-01-000

FOR ELECTRICAL CALLOUTS SEE DWG NO. 121339-01-000

- 282 SOLAR PANEL - 100 WATT
- 783 SATELLITE HD TV SYSTEM AUTOC
- 48P SAT TV SYSTEM IN-MOTION
- 265 CODES/STANDARDS-CSA/CMVSS
- 1B1 CODES/STANDARDS USA

- NOTES:
- 2 REMOVE ALL SHIPPING RESTRAINTS AS SPECIFIED IN THE INSTALLATION PROCESS.
 - 1 SEE ANTENNA INSTALLATION MANUAL FOR CORRECT INSTALLATION PROCEDURE.

DESCRIPTION: WIRING INSTL-BODY, 12V		
SHEET: 7 OF 8	ITEM/PART NO.: 000211551 / 30161701000	REV

8 7 6 5 4 3 2 1 07-Oct-2016

