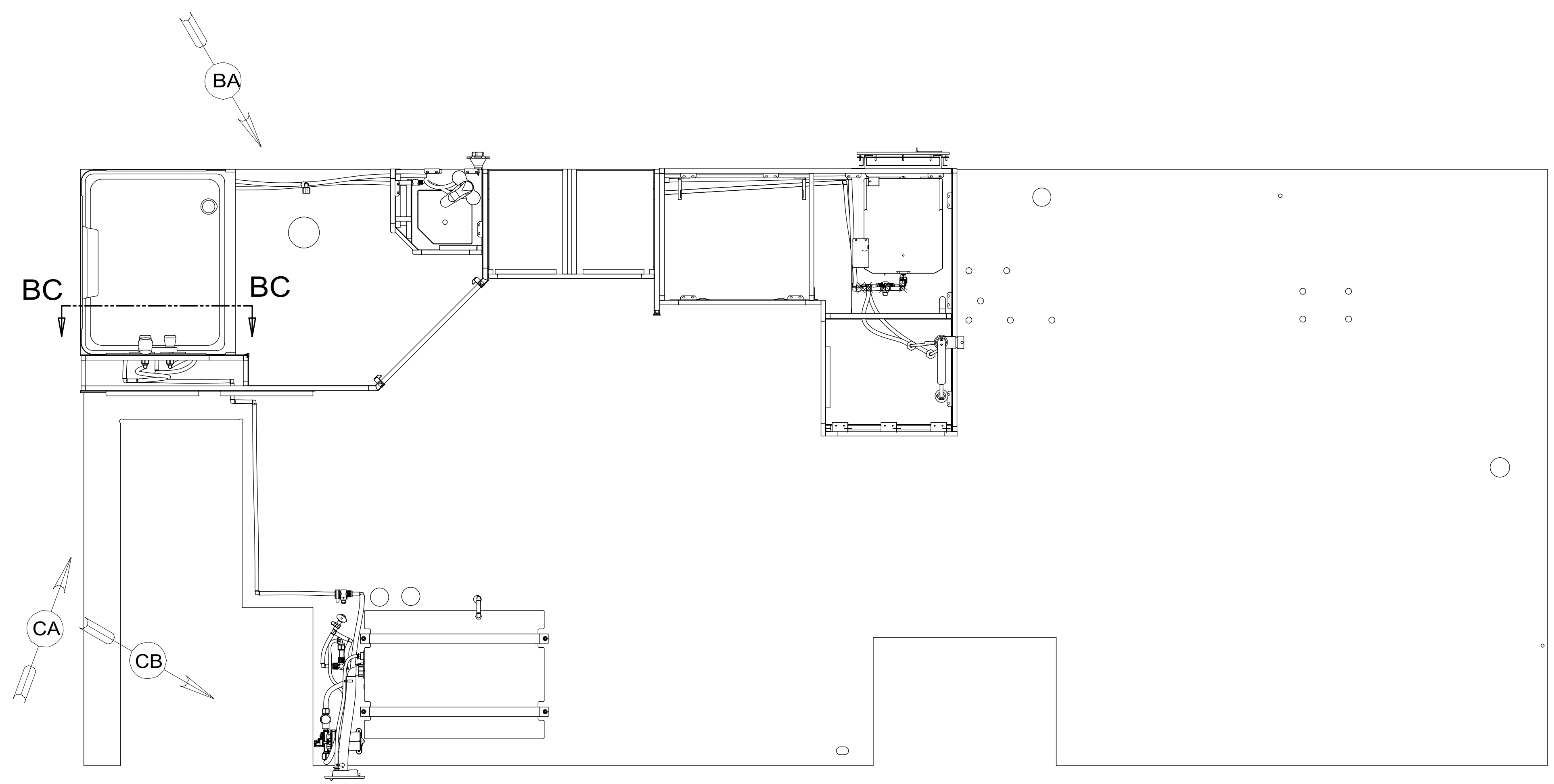


REV	ZONE	REVISION RECORD	DATE	DFTR-ORIG
A	---	INITIAL RELEASE	11/04/15	3650



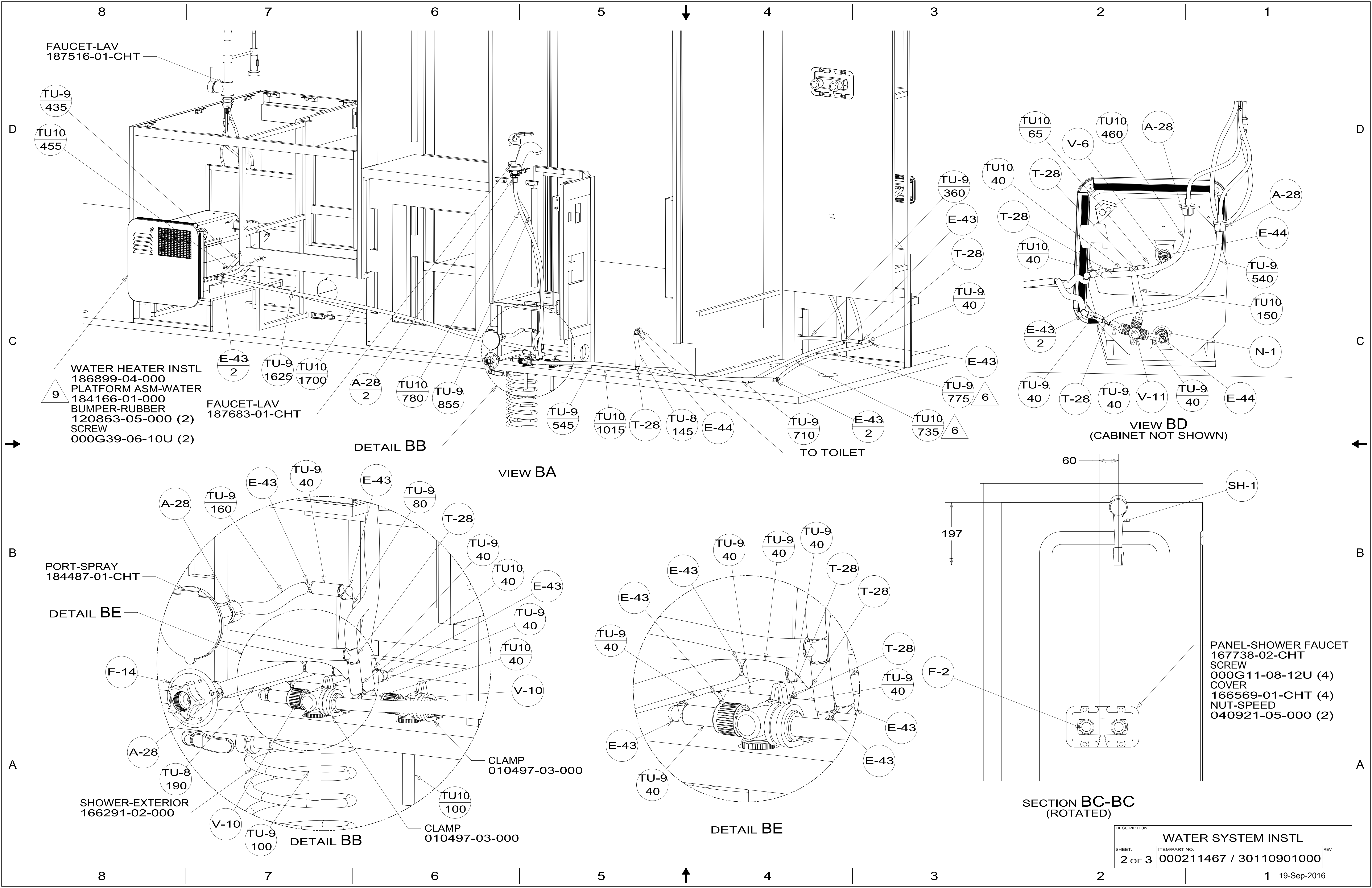
9. FASTEN PLATFORM TO FLOOR AFTER SIDEWALL IS SET AND HEATER IS ATTACHED TO WALL.
8. ALL CRIMP FITTINGS TO 1/2" PEX TUBING REQUIRE 1/2" CLAMP 140171-03-000.
7. ALL CRIMP FITTINGS TO 5/8" PEX TUBING REQUIRE 5/8" CLAMP 140171-04-000.
6. LABEL HOT AND COLD SUPPLY TUBES AND TAPE FITTING TO TUBE BEFORE CABINET SET TO PREVENT MOVEMENT.
5. ADD PIPE WRAP (LADDER SCRAP 110157-02-000) INSULATION.
4. ADD TEFLON TAPE 010405-02-000.
3. ALL TUBING TO BE SECURED AT 1200 INTERVALS MAXIMUM WITH CLAMP 010495-01-000 AND SCREW 000G67-10-12U OR EQUIVALENT.
2. TUBING TO BE INSTALLED WITH SUFFICIENT SLOPE TO PROVIDE DRAINAGE TO NEAREST VALVE.
1. PLASTIC FITTINGS TO BE SEALED WITH SEALANT 084456-01-000.

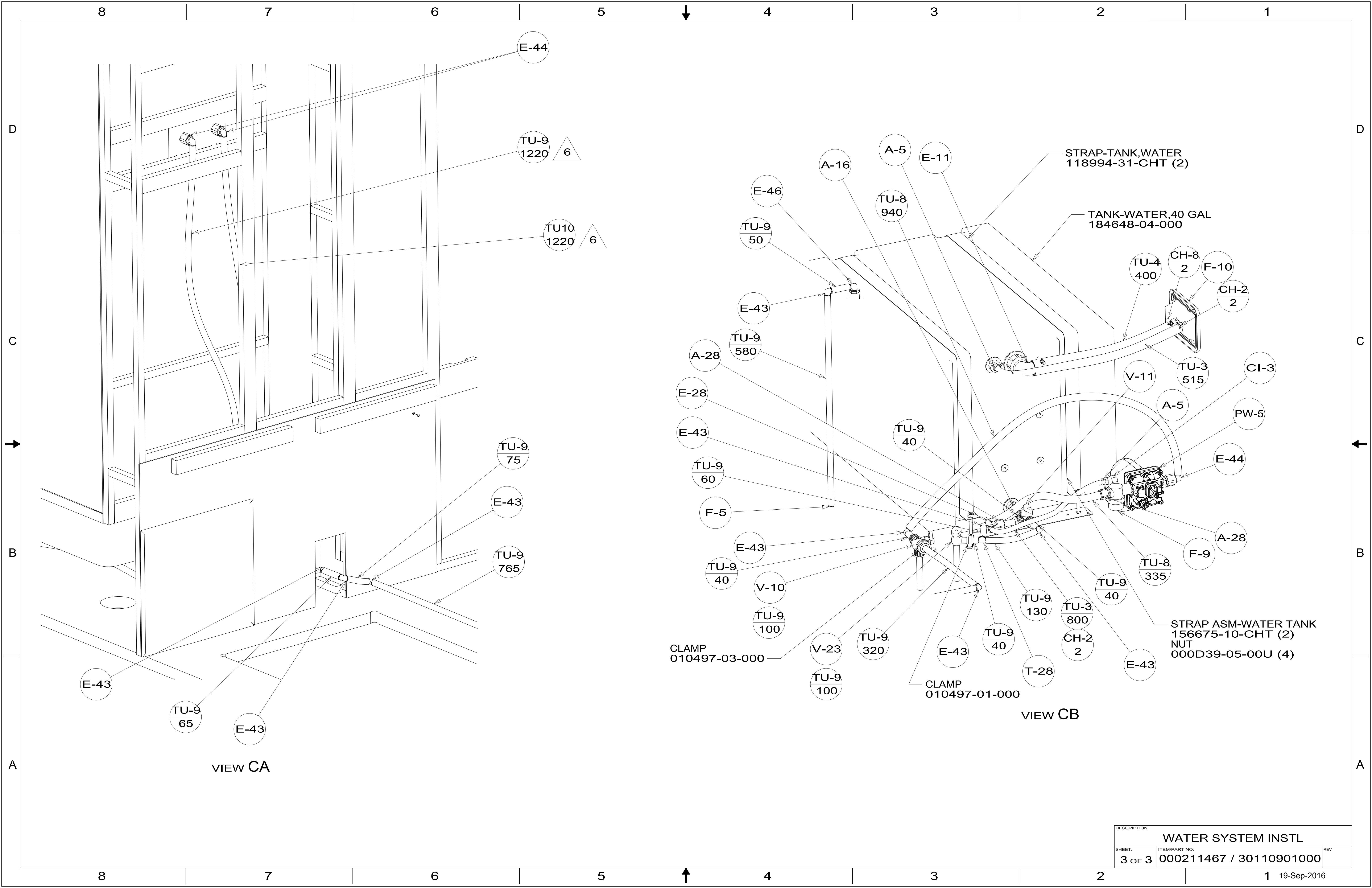
NOTES:

X-X
FOR WATER CALLOUTS SEE DWG NO. 116230-01-000

WINNEBAGO
COPYRIGHT 2016 WINNEBAGO INDUSTRIES, INC.

DSNR:	ALL DIMENSIONS ARE IN MILLIMETERS	
DFTR:	MATERIAL:	
UNSPECIFIED TOLERANCES:	WHOLE DIM (X) :	3
	ONE-PLACE (X.X) :	1.5
	TWO-PLACE (X.XX) :	0.50
	ANGLE :	1°
REFER TO ES0018 FOR FASTENER TIGHTENING GUIDELINES	WEIGHT: (LBS)	FIRST USED: (REF)
DESCRIPTION: WATER SYSTEM INSTL		
SHEET: 1 OF 3	ITEM/PART NO: 000211467 / 30110901000	REV:
REF:		1 19-Sep-2016





E-44

TU-9
1220 6

TU10
1220 6

TU-9
75

E-43

TU-9
765

E-43

TU-9
65

E-43

VIEW CA

E-46

TU-9
50

E-43

A-28

TU-9
580

E-28

E-43

TU-9
60

F-5

E-43

TU-9
40

V-10

TU-9
100

E-43

TU-9
100

V-23

TU-9
320

E-43

TU-9
40

TU-9
130

TU-3
800

CH-2
2

T-28

TU-9
40

TU-8
335

V-11

A-5

TU-3
515

PW-5

E-44

F-9

A-28

TU-4
400

CH-8
2

F-10

CH-2
2

CI-3

STRAP-TANK,WATER
118994-31-CHT (2)

TANK-WATER,40 GAL
184648-04-000

STRAP ASM-WATER TANK
156675-10-CHT (2)
NUT
000D39-05-00U (4)

VIEW CB