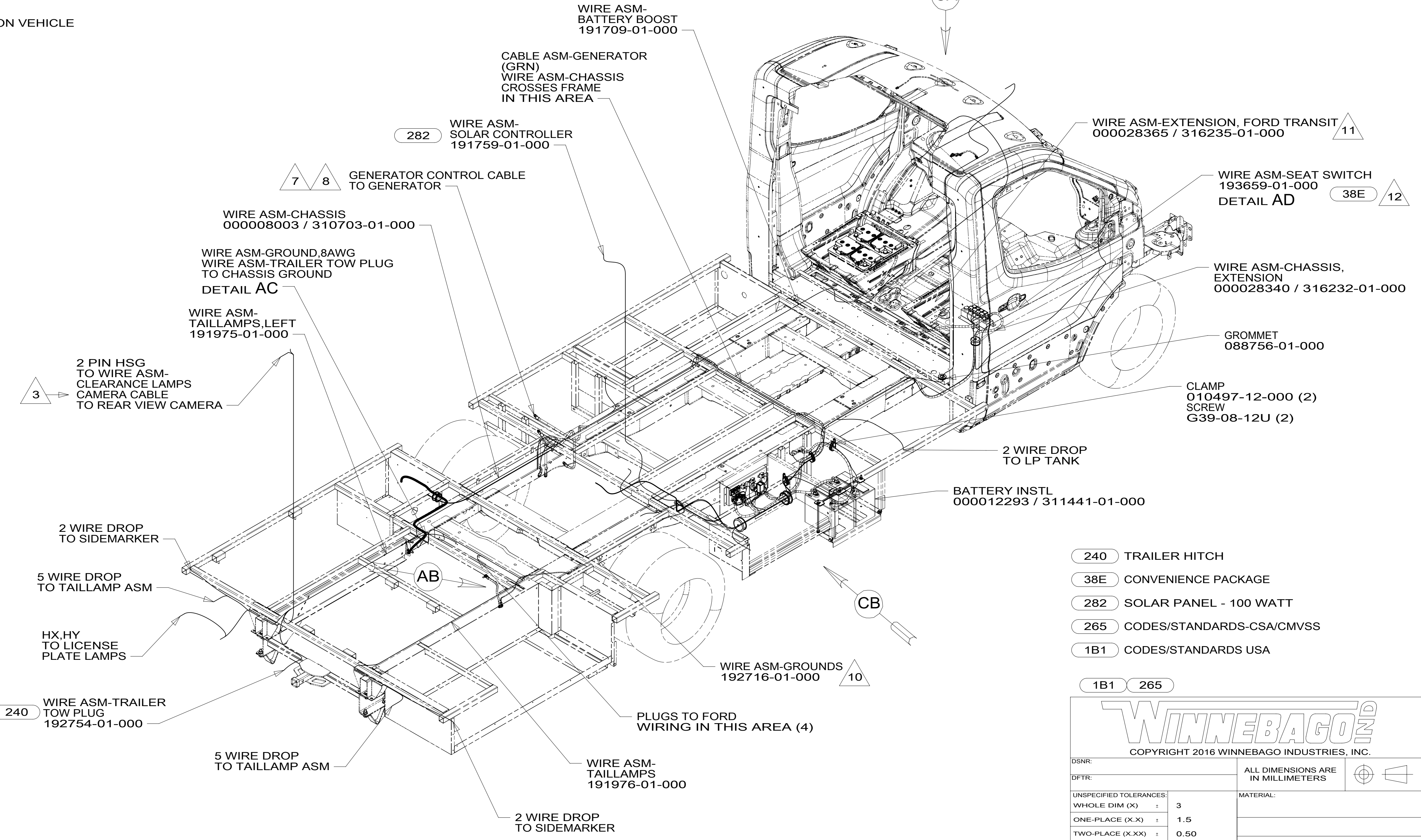
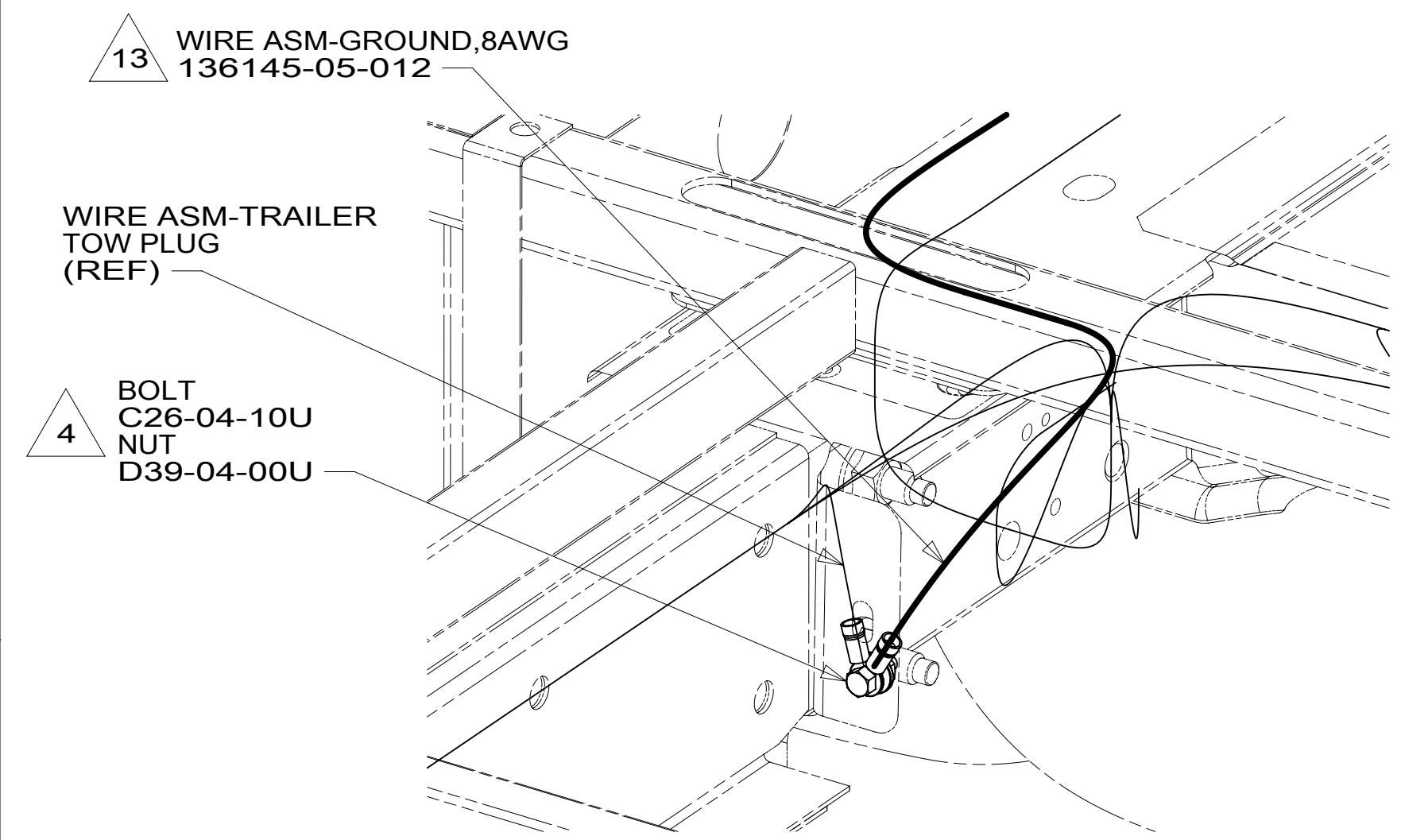
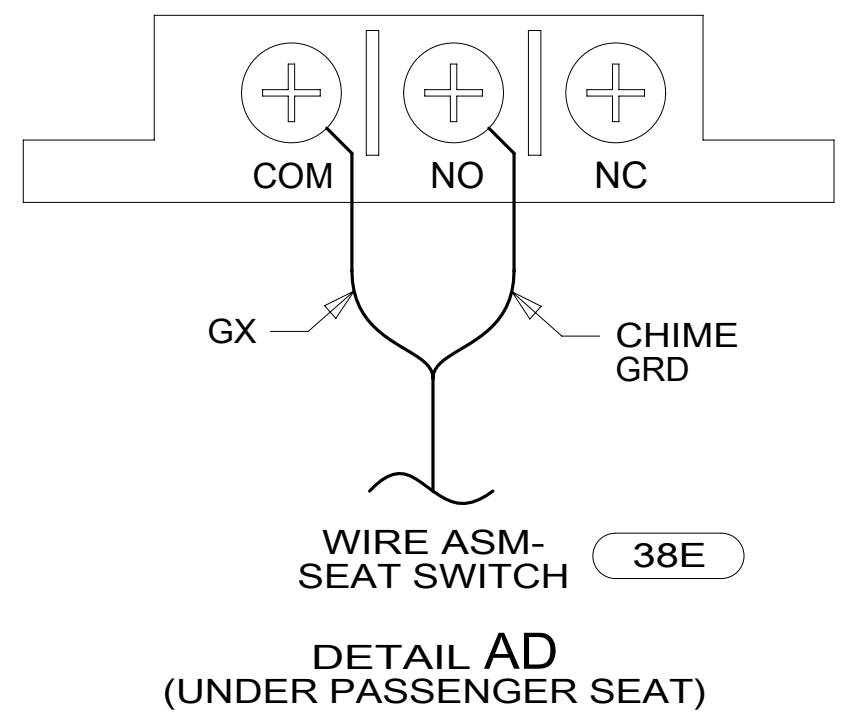
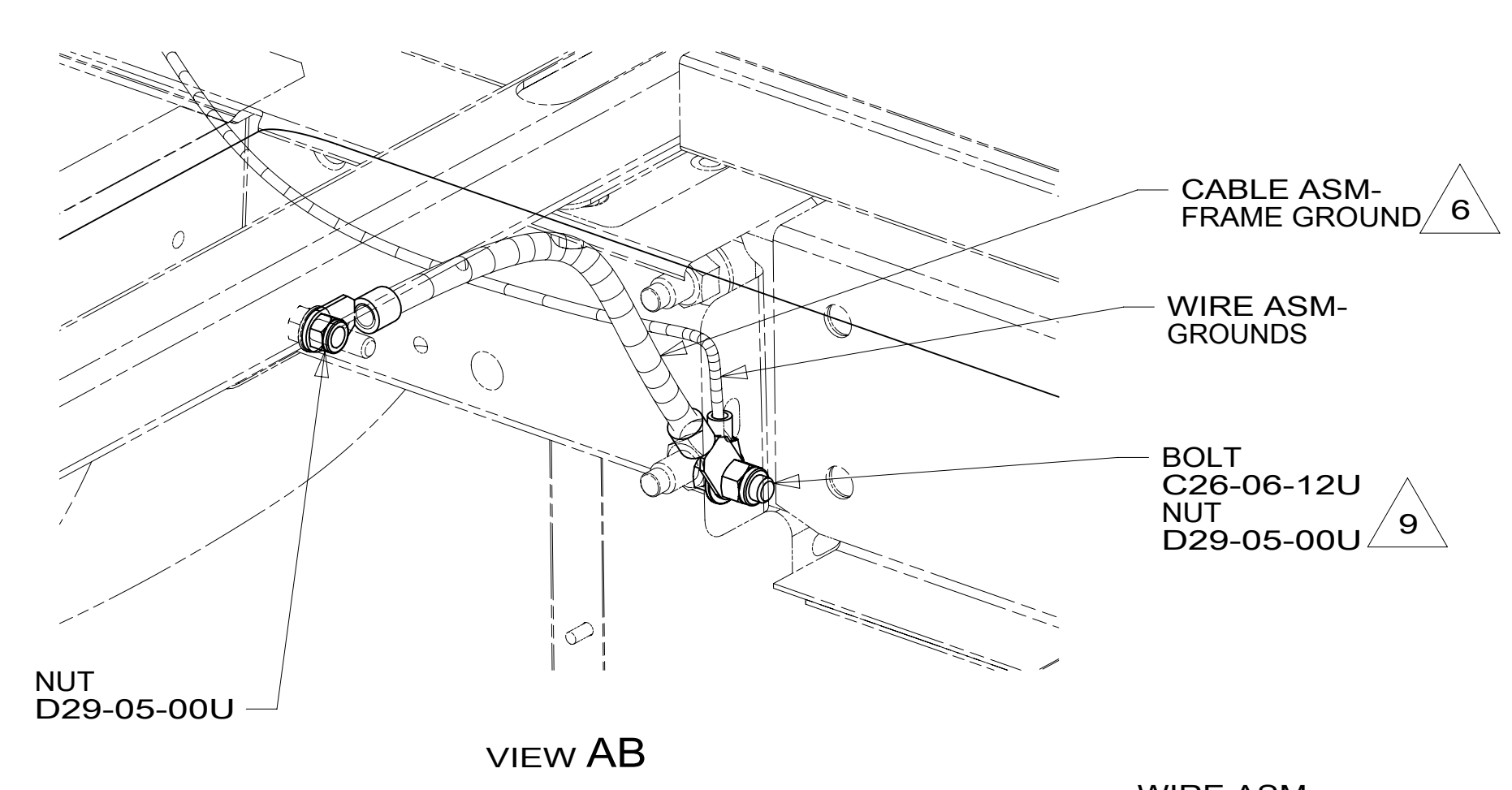


SOCKET 29 - CIRCUIT FR
 SOCKET 30 - CIRCUIT DY
 SOCKET 32 - CIRCUIT BW
 SOCKET 43 - CIRCUIT GZ



- 11 SEE DETAIL AA FOR CONNECTION OF WIRE ASM TO FORD SUPPLIED CONNECTOR LOCATED BEHIND GLOVE BOX.
- 10 SEE DETAIL AB FOR CONNECTION OF CABLE ASM TO CHASSIS RAIL.
- 9 DRILL 10.4 MM HOLE IN CHASSIS RAIL FLANGE. CLEAN PANT FROM FLANGE APPROXIMATELY 10 MM AROUND HOLE. BOLT AND NUT GROUND TERMINAL TO FLANGE.
- 8 ROUTE GENERATOR CABLE ALONG WITH WIRE ASM-CHASSIS TO AND THROUGH FLOOR TO WIRE ASM-RIGHT. ROUTE UP TO MONITOR PANEL AREA.
- 7 10 PIN HSG CONNECTS TO GENERATOR.
- 6 SEE BATTERY INSTL FOR ADDITIONAL INFORMATION.
- 5 WIRING IS PART OF WIRE ASM-POWER MIRRORS.
- 4 DRILL 6.35 MM HOLE IN CHASSIS RAIL FLANGE. CLEAN PANT FROM FLANGE APPROXIMATELY 10 MM AROUND HOLE. BOLT AND NUT GROUND RING FROM WIRE ASM-TRAILER TOW PLUG TO FLANGE.
- 3 SEE RADIO/MONITOR INSTL FOR ADDITIONAL INFORMATION.
2. USE WIRE TIES 8343-04-000 AND 116673-02-000 APPROXIMATELY 600MM ON CENTER UNLESS OTHERWISE SPECIFIED.
1. SECURE CONDUIT 41953, TAB AS REQUIRED, OVER ALL WIRES IN CONTACT WITH SHARP EDGES.

- 13 SEE LOAD CENTER/ATS ASM FOR ADDITIONAL INFORMATION.
- 12 SEE INTERIOR INSTL-FRONT FOR ADDITIONAL INFORMATION.

FOR ELECTRICAL TORQUE SPECIFICATIONS SEE DWG NO. 128783-01-000

FOR ELECTRICAL CALLOUTS SEE DWG NO. 121339-01-000

- 240 TRAILER HITCH
- 38E CONVENIENCE PACKAGE
- 282 SOLAR PANEL - 100 WATT
- 265 CODES/STANDARDS-CSA/CMVSS
- 1B1 CODES/STANDARDS USA

WINNEBAGO
 COPYRIGHT 2016 WINNEBAGO INDUSTRIES, INC.

DSNR:	ALL DIMENSIONS ARE IN MILLIMETERS
DFFR:	
UNSPECIFIED TOLERANCES:	MATERIAL:
WHOLE DIM (X) : 3	
ONE-PLACE (X.X) : 1.5	
TWO-PLACE (X.XX) : 0.50	
ANGLE : 1°	
REFER TO ES0018 FOR FASTENER TIGHTENING GUIDELINES	WEIGHT: (LBS) FIRST USED: 16 423T
DESCRIPTION: WIRING INSTL-CHASSIS	
SHEET: 1 OF 3	ITEM/PART NO: 000211437 / 30101901000
REF:	1 09-May-2017

8 7 6 5 4 3 2 1

D

D

C

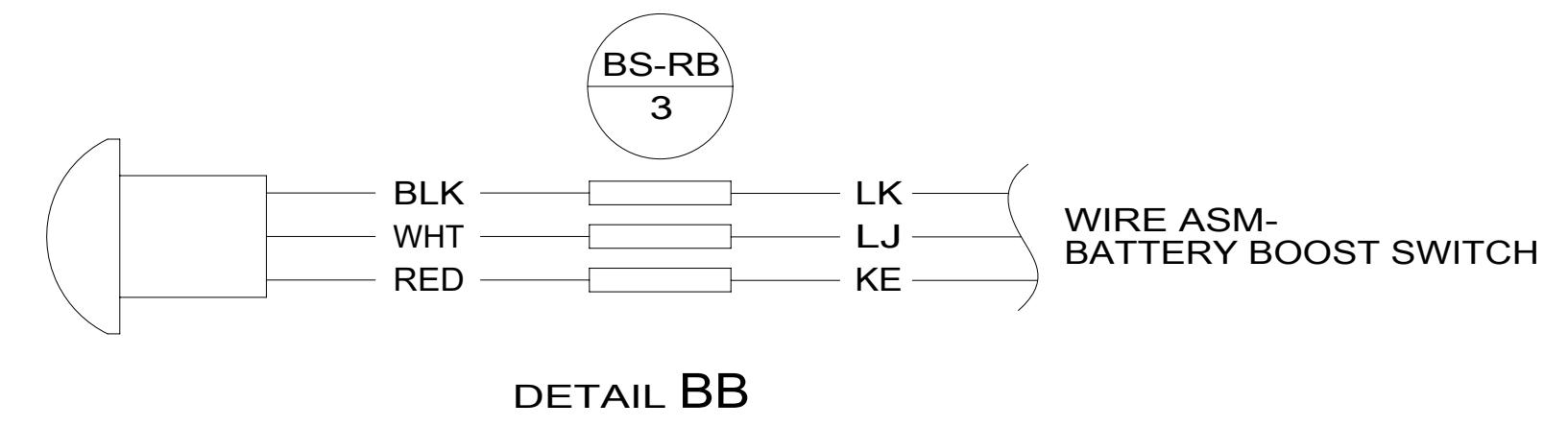
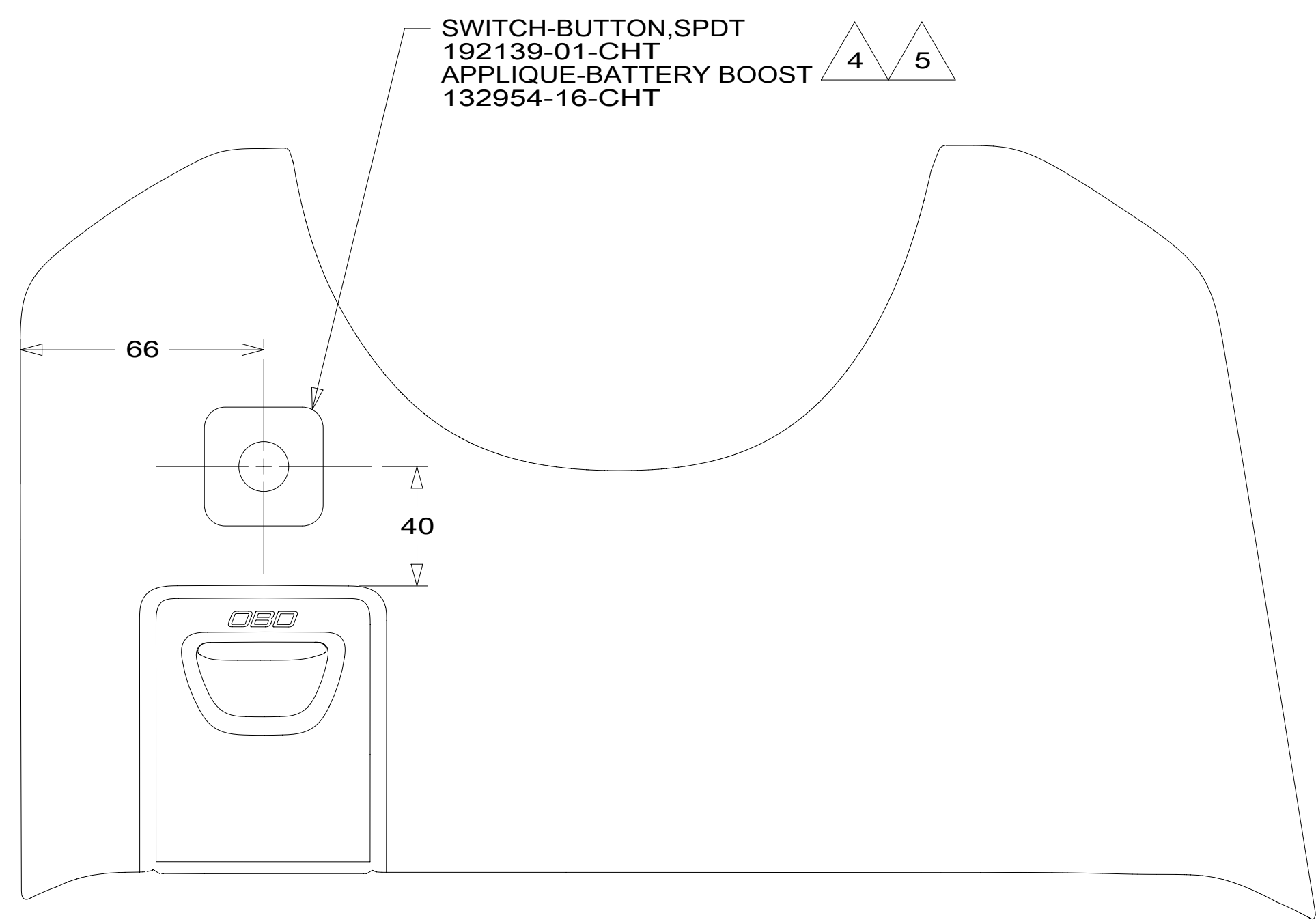
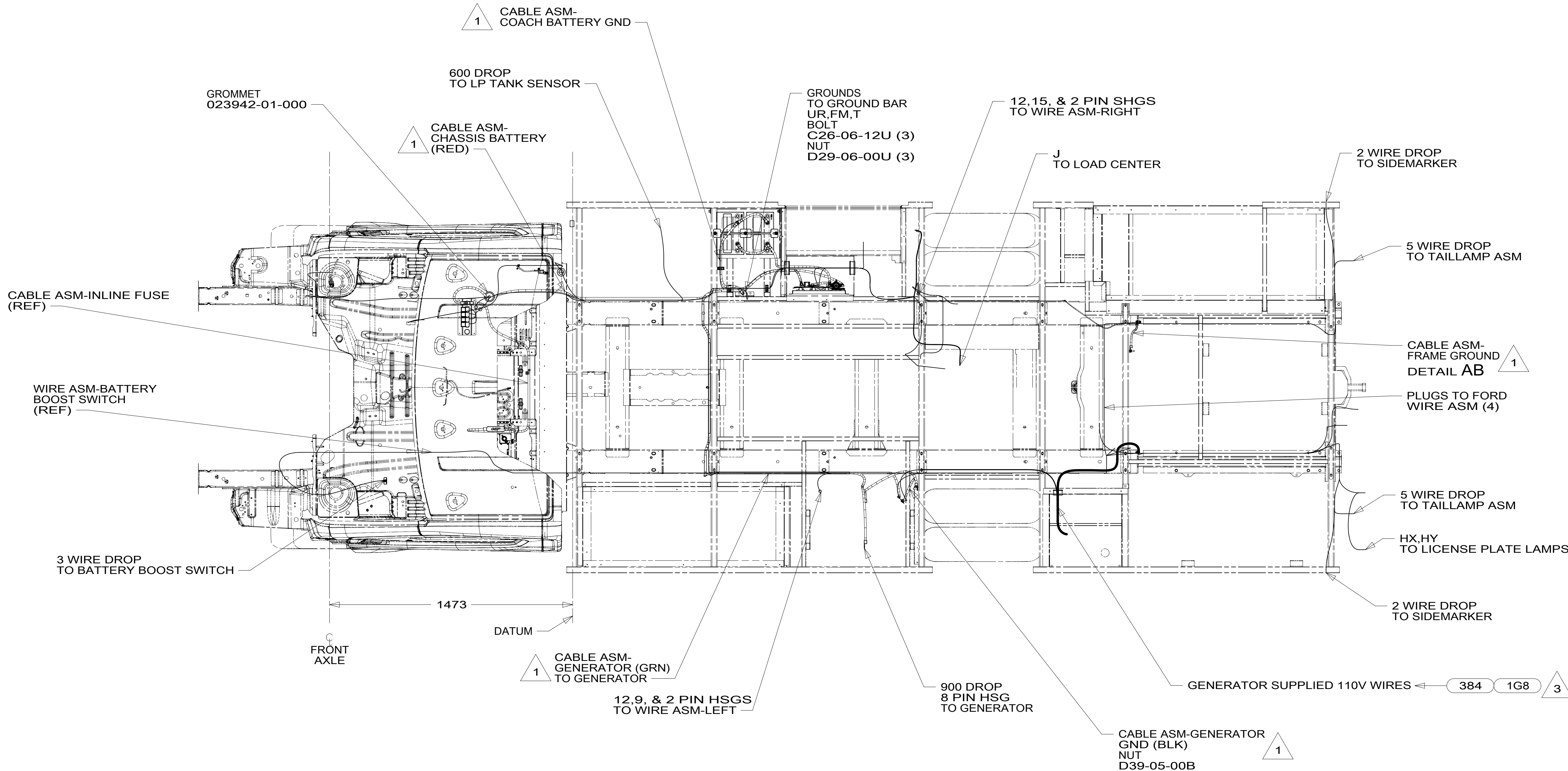
C

B

B

A

A



- NOTES:
- 5 DRILL 12.3 MM HOLE INTO DASH PANEL.
 - 4 SEE DETAIL **BB** FOR CONNECTION OF BUTTON SWITCH.
 - 3 SEE GENERATOR INSTL FOR ADDITIONAL INFORMATION.
 - 2 SEE LOAD CENTER/ATS ASM FOR ADDITIONAL INFORMATION.
 - 1 SEE BATTERY INSTL FOR ADDITIONAL INFORMATION.

- 1G8 GEN-2.8KW ONAN GAS
- 384 GEN 2.5KW ONAN-MICROLITE
- 265 CODES/STANDARDS-CSA/CMVSS
- 1B1 CODES/STANDARDS USA

FOR ELECTRICAL TORQUE SPECIFICATIONS SEE DWG NO. 128783-01-000

FOR ELECTRICAL CALLOUTS SEE DWG NO. 121339-01-000

DESCRIPTION: WIRING INSTL-CHASSIS		
SHEET: 2 OF 3	ITEM/PART NO: 000211437 / 30101901000	REV

8 7 6 5 4 3 2 1 09-May-2017

