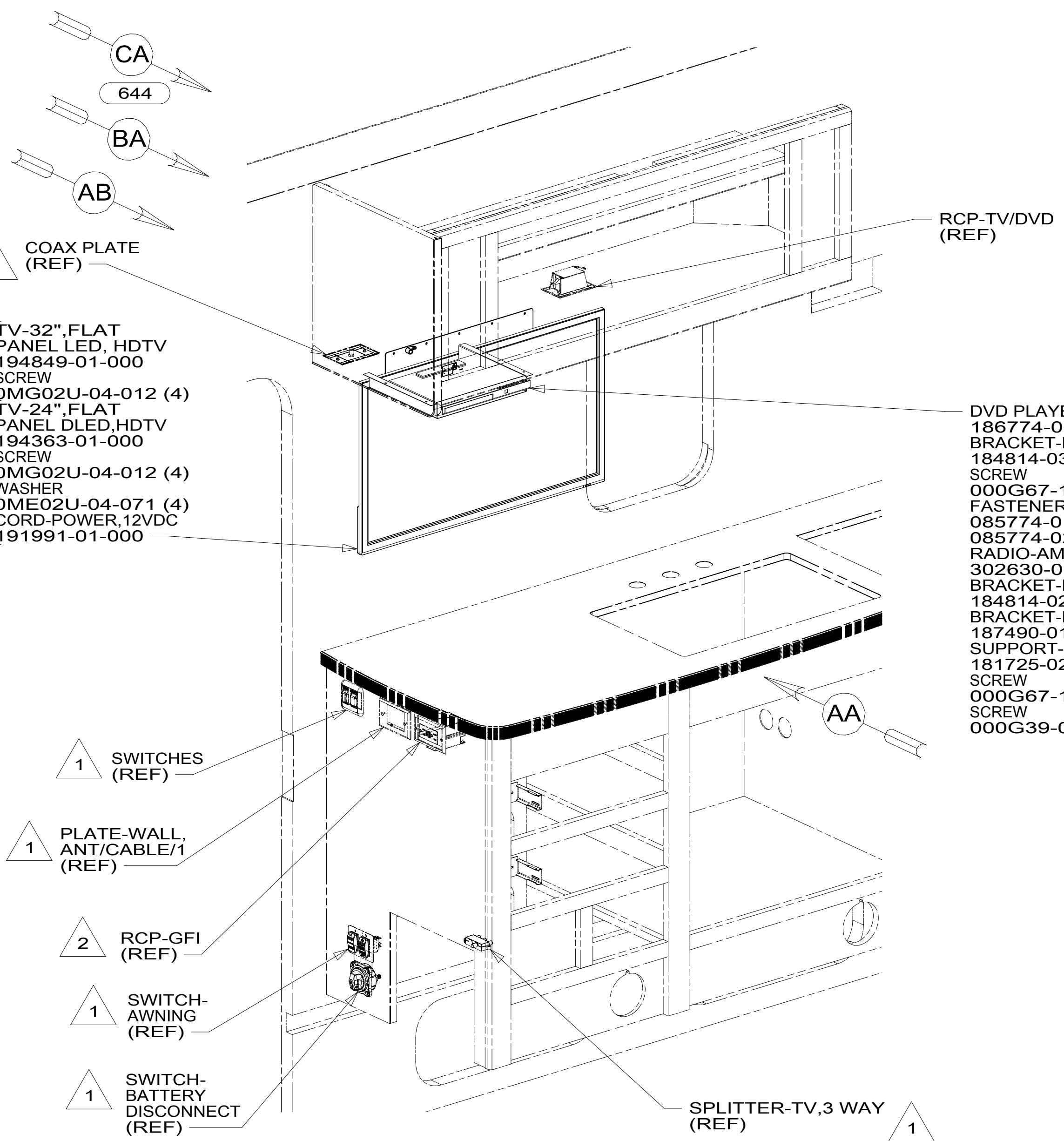


D

C

B

A



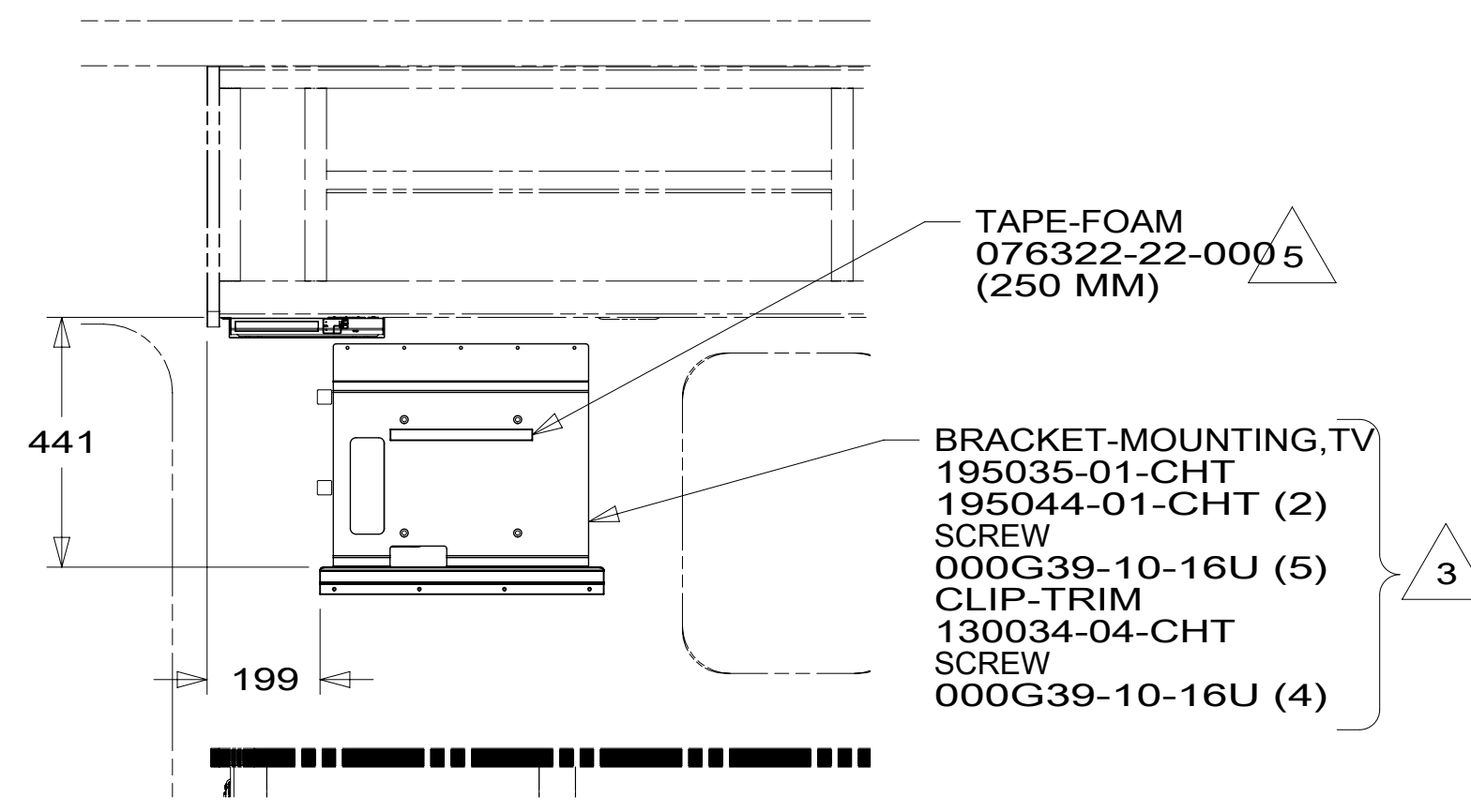
68Y  
09A

644

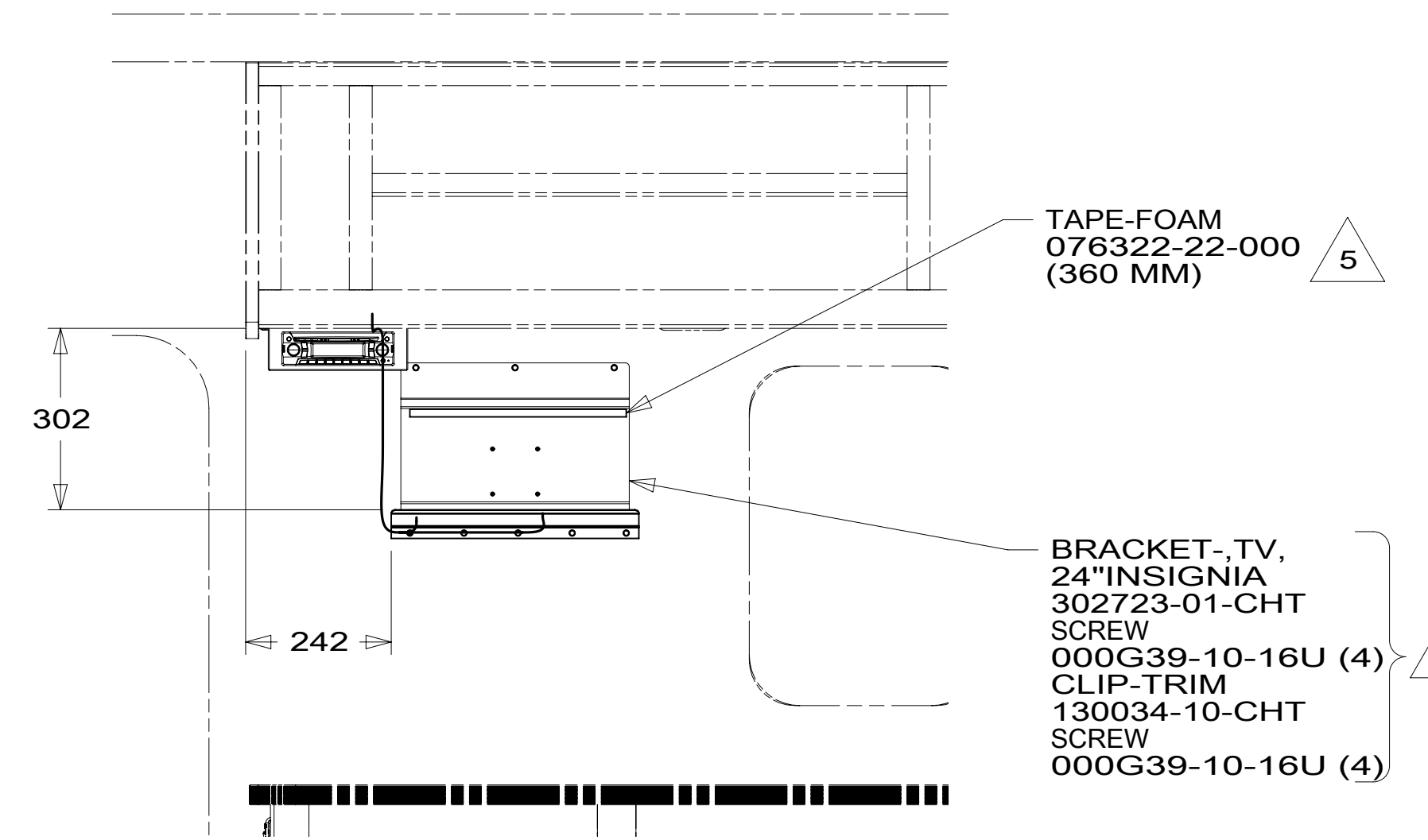
09A  
68Y

644

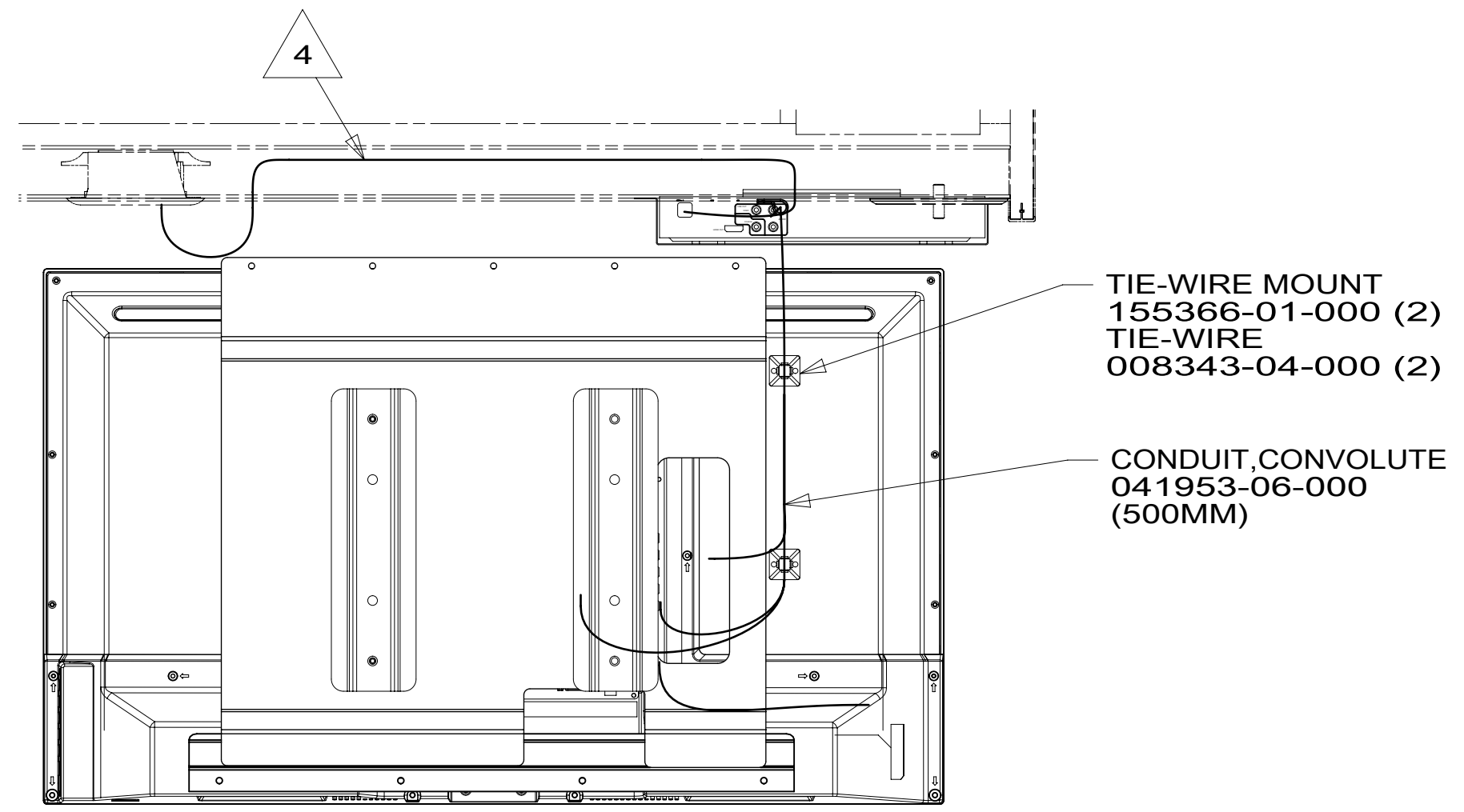
- NOTES:
- 5 PREP SURFACE WITH ADHESIVE PROMOTER 87211-01-000.
  - 4 DVD 110V POWER CORD TO BE ROUTED IN BOTTOM OF OVHD CABINET OUT OF HOLE NEXT TO 110V RCP AND PLUGGED INTO RECP.
  - 3 TV BRACKET AND CLIP TO BE CENTERED ON OVHD CABT. MOUNT CLIP AT DIMENSION SHOWN TO TOP EDGE OF CLIP.
  - 2 SEE WIRING INSTL-BODY, 110V FOR ADDITIONAL INFORMATION.
  - 1 SEE WIRING INSTL-BODY, 12V FOR ADDITIONAL INFORMATION.



VIEW AA (TV NOT SHOWN) 09A 68Y



VIEW AA (TV NOT SHOWN) 644



VIEW AB 09A 68Y

FOR ELECTRICAL TORQUE SPECIFICATIONS SEE DWG NO. 128783-01-000

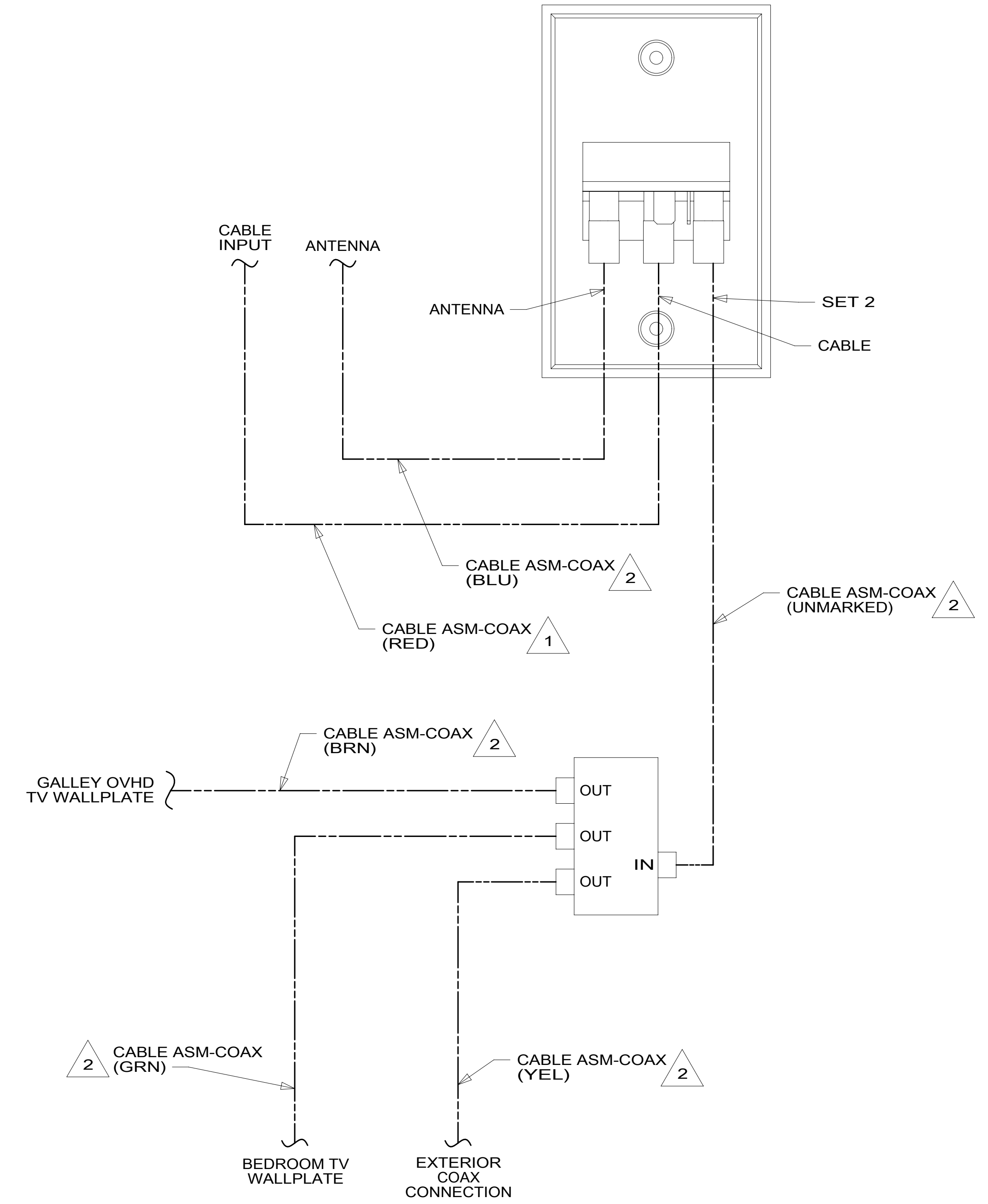
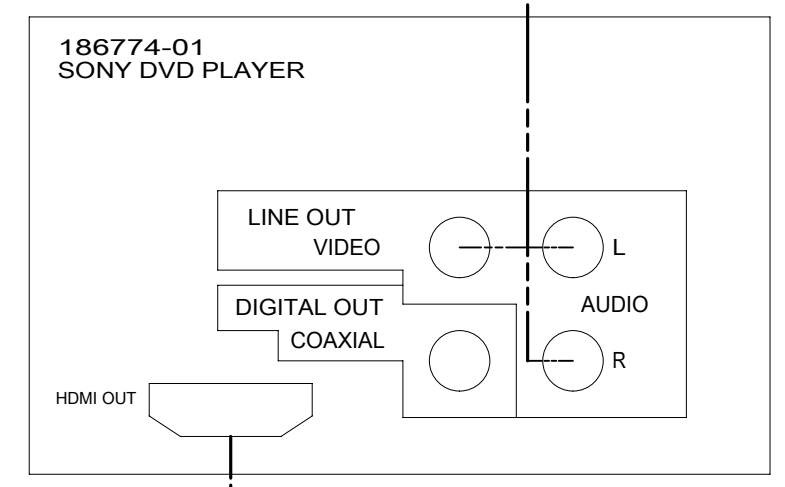
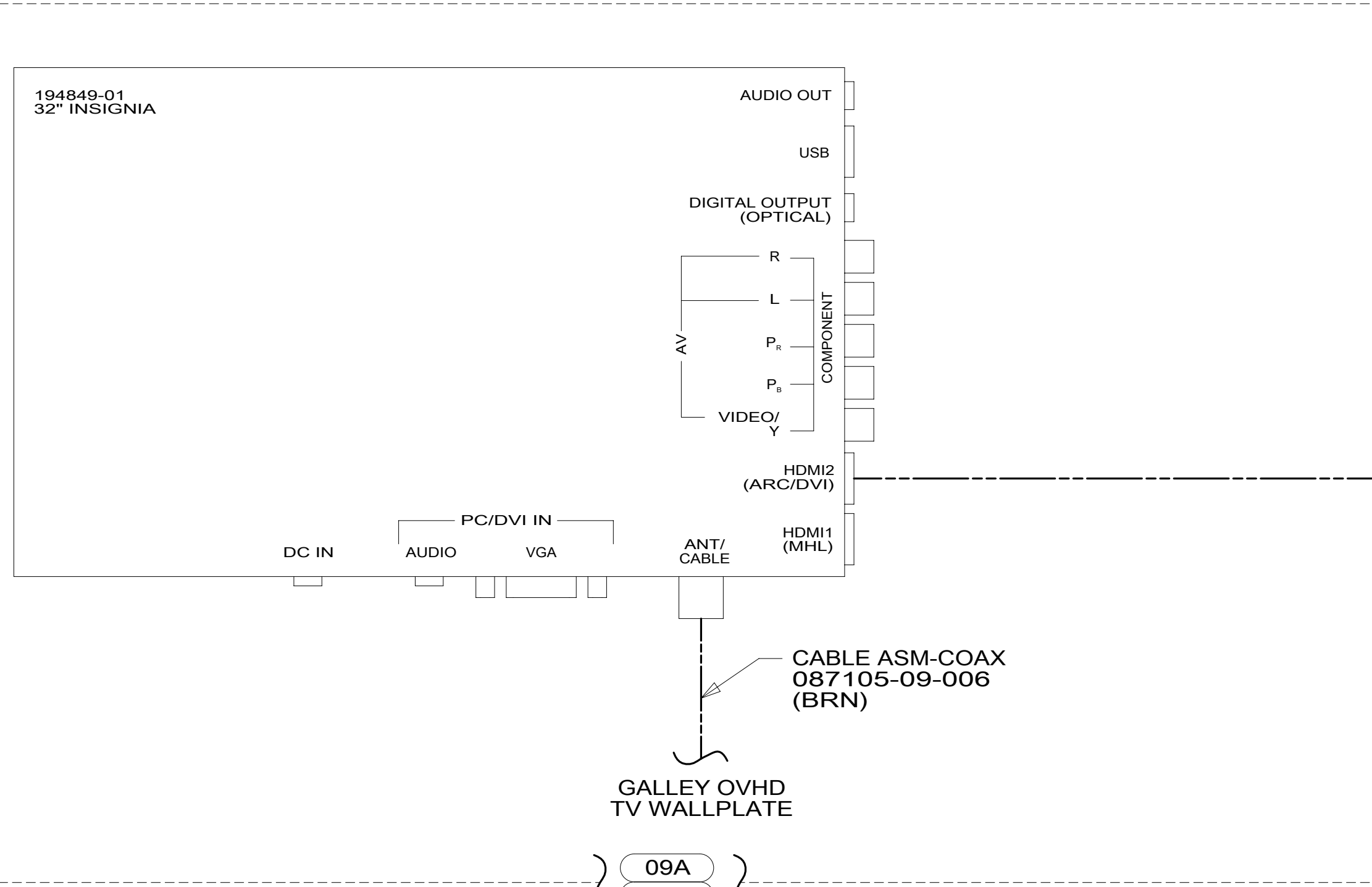
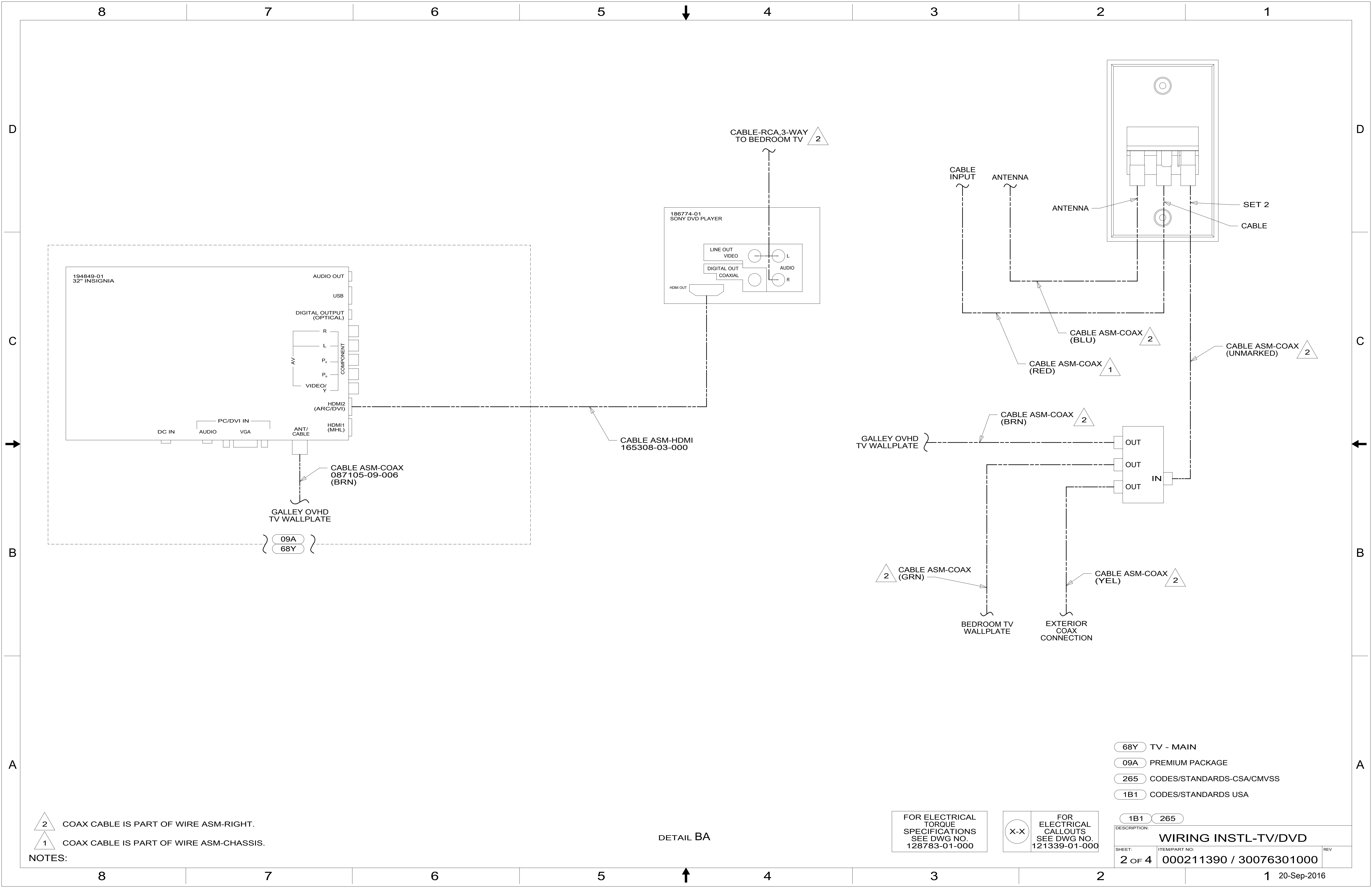
FOR ELECTRICAL CALLOUTS SEE DWG NO. 121339-01-000

- 68Y CONVENIENCE & APPEARANCE PKG
- 644 GREAT ALASKAN RENTAL PACKAGE
- 09A PREMIUM PACKAGE
- 265 CODES/STANDARDS-CSA/CMVSS
- 1B1 CODES/STANDARDS USA

1B1 265

**WINNEBAGO**  
COPYRIGHT 2016 WINNEBAGO INDUSTRIES, INC.

DSNR:	ALL DIMENSIONS ARE IN MILLIMETERS	
DFFR:		
UNSPECIFIED TOLERANCES:	MATERIAL:	
WHOLE DIM (X) : 3		
ONE-PLACE (X.X) : 1.5		
TWO-PLACE (X.XX) : 0.50		
ANGLE : 1°		
REFER TO ES0018 FOR FASTENER TIGHTENING GUIDELINES	WEIGHT: (LBS)	FIRST USED: 16 327Q
DESCRIPTION: <b>WIRING INSTL-TV/DVD</b>		
SHEET: 1 OF 4	ITEM/PART NO: 000211390 / 30076301000	REV:



NOTES:  
 2 COAX CABLE IS PART OF WIRE ASM-RIGHT.  
 1 COAX CABLE IS PART OF WIRE ASM-CHASSIS.

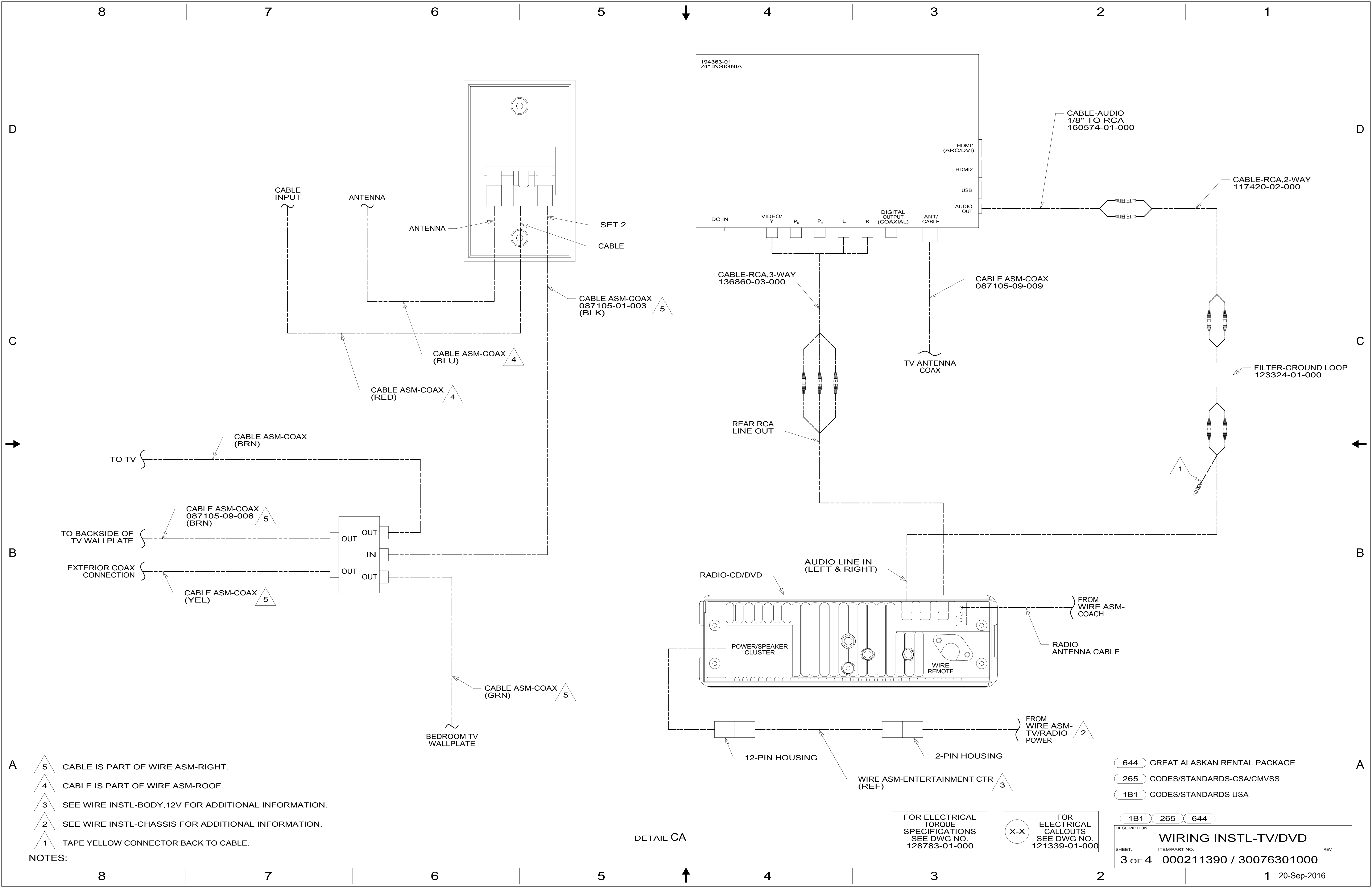
DETAIL BA

FOR ELECTRICAL TORQUE SPECIFICATIONS SEE DWG NO. 128783-01-000

FOR ELECTRICAL CALLOUTS SEE DWG NO. 121339-01-000

- 68Y TV - MAIN
- 09A PREMIUM PACKAGE
- 265 CODES/STANDARDS-CSA/CMVSS
- 1B1 CODES/STANDARDS USA

DESCRIPTION: <b>WIRING INSTL-TV/DVD</b>	
SHEET: 2 OF 4	ITEM/PART NO: 000211390 / 30076301000
REV 1 20-Sep-2016	



- NOTES:
- 5 CABLE IS PART OF WIRE ASM-RIGHT.
  - 4 CABLE IS PART OF WIRE ASM-ROOF.
  - 3 SEE WIRE INSTL-BODY, 12V FOR ADDITIONAL INFORMATION.
  - 2 SEE WIRE INSTL-CHASSIS FOR ADDITIONAL INFORMATION.
  - 1 TAPE YELLOW CONNECTOR BACK TO CABLE.

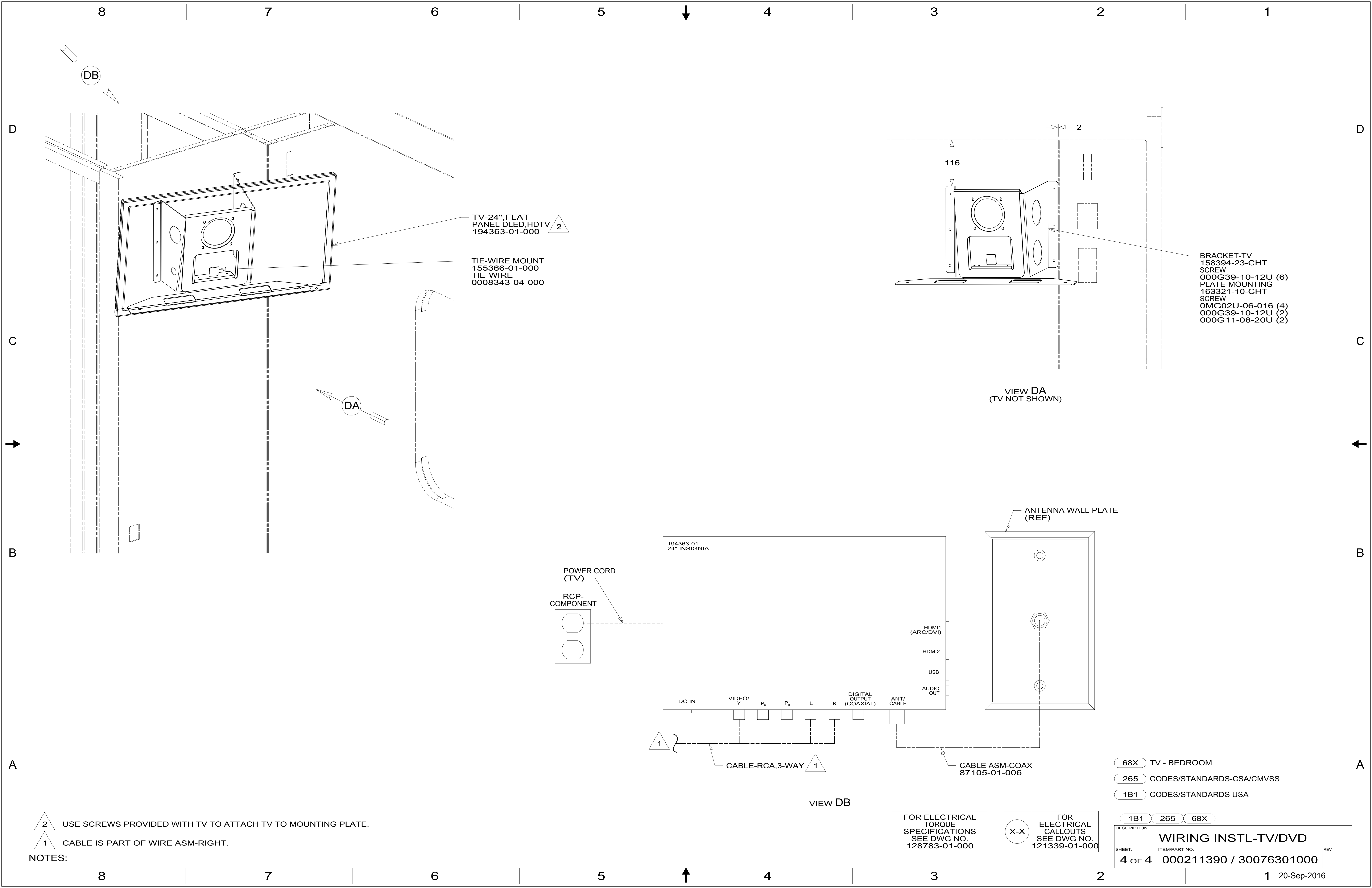
DETAIL CA

FOR ELECTRICAL TORQUE SPECIFICATIONS SEE DWG NO. 128783-01-000

FOR ELECTRICAL CALLOUTS SEE DWG NO. 121339-01-000

- 644 GREAT ALASKAN RENTAL PACKAGE
- 265 CODES/STANDARDS-CSA/CMVSS
- 1B1 CODES/STANDARDS USA

DESCRIPTION:	1B1 265 644	
<b>WIRING INSTL-TV/DVD</b>		
SHEET:	ITEM/PART NO:	REV
3 OF 4	000211390 / 30076301000	



2 USE SCREWS PROVIDED WITH TV TO ATTACH TV TO MOUNTING PLATE.

1 CABLE IS PART OF WIRE ASM-RIGHT.

NOTES:

FOR ELECTRICAL  
TORQUE  
SPECIFICATIONS  
SEE DWG NO.  
128783-01-000

FOR ELECTRICAL  
CALLOUTS  
SEE DWG NO.  
121339-01-000

DESCRIPTION:	<b>WIRING INSTL-TV/DVD</b>	
SHEET:	4 OF 4	ITEM/PART NO: 000211390 / 30076301000
REV		