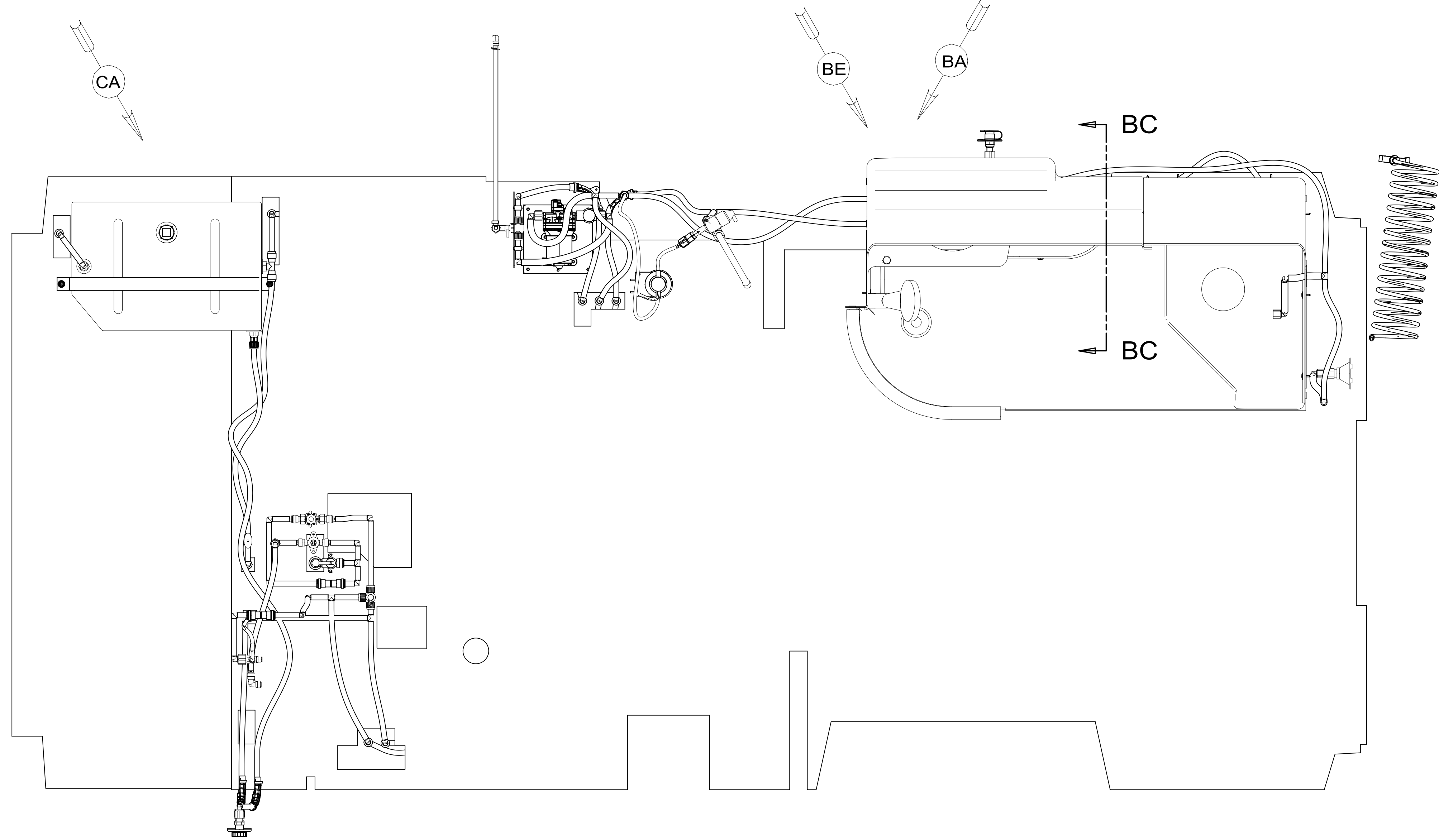


REV	ZONE	REVISION RECORD	DATE	DFTR-ORIG
A	---	INITIAL RELEASE	11/03/15	3650
B	S3D5	CHG F-14 TO F-15	11/17/15	7786-5643
C	---	CHG LENGTH SH2	2-10-16	1600-0428
D	---	NUT SERT SHT3	5-9-16	1600-6437



FRONT OF COACH

- 10 INSTALL BYPASS PLUG FOR SYSTEM TESTING AND SHIPPING.
- △ PARTS TO BE ASSEMBLED AND ABLE TO BE REMOVED AND STORED AS A SINGLE ASM.
8. ALL CRIMP FITTINGS TO 1/2" PEX TUBING REQUIRE 1/2" CLAMP 140171-03-000.
7. ALL CRIMP FITTINGS TO 5/8" PEX TUBING REQUIRE 5/8" CLAMP 140171-04-000.
- △ LABEL HOT AND COLD SUPPLY TUBES AND TAPE FITTING TO TUBE BEFORE CABINET SET TO PREVENT MOVEMENT.
- △ ADD PIPE WRAP (LADDER SCRAP 110157-02-000) INSULATION.
- △ ADD TEFLON TAPE 010405-02-000.
3. ALL TUBING TO BE SECURED AT 1200 INTERVALS MAXIMUM WITH CLAMP 010495-01-000 AND SCREW 000G67-10-12U OR EQUIVALENT.
2. TUBING TO BE INSTALLED WITH SUFFICIENT SLOPE TO PROVIDE DRAINAGE TO NEAREST VALVE.
1. PLASTIC FITTINGS TO BE SEALED WITH SEALANT 084456-01-000.

NOTES:

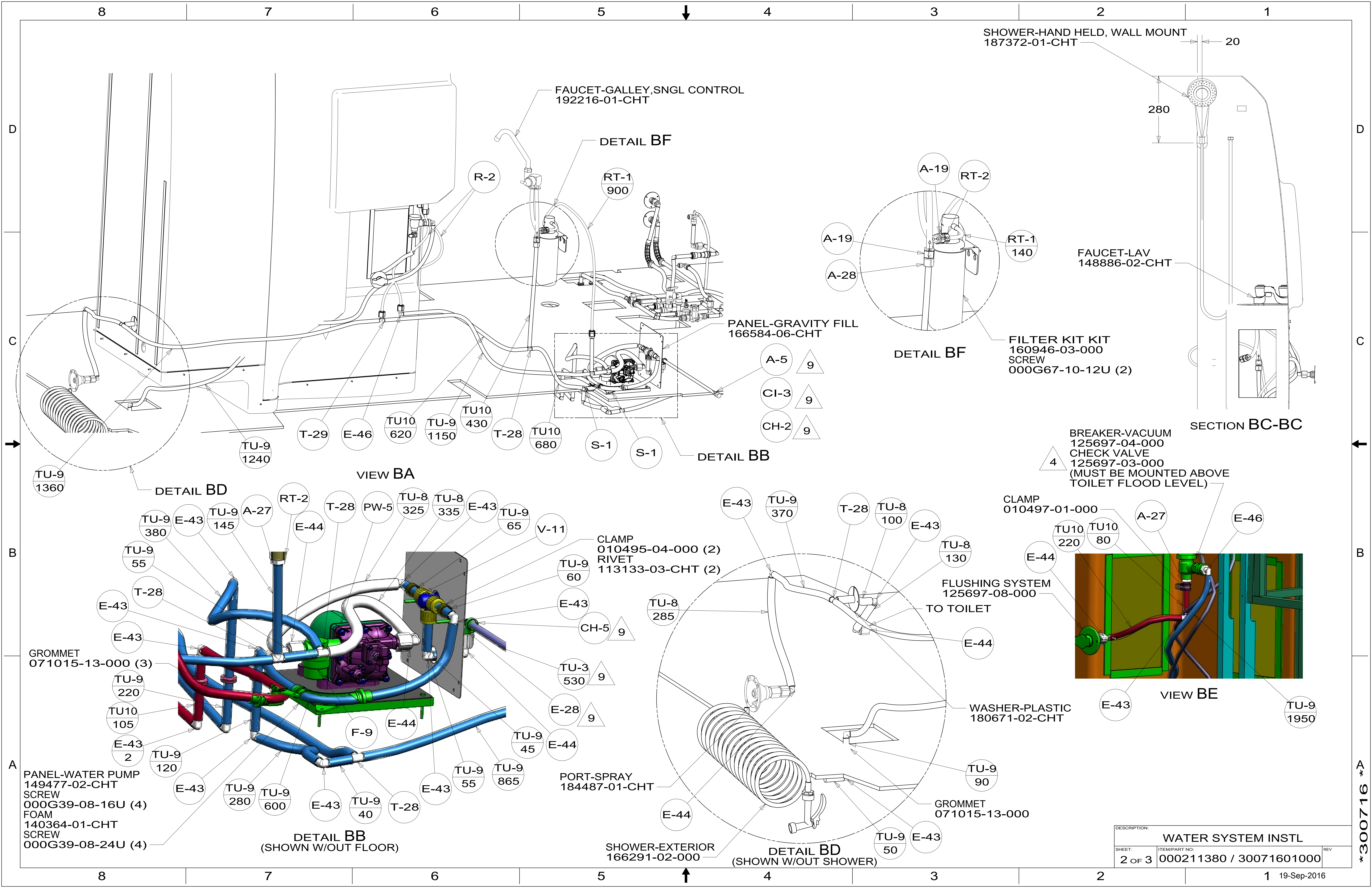
X-X

FOR WATER CALLOUTS SEE DWG NO. 000209446 / 303369-01-000

WINNEBAGO
COPYRIGHT 2016 WINNEBAGO INDUSTRIES, INC.

DSNR:	ALL DIMENSIONS ARE IN MILLIMETERS	
DFTR:	MATERIAL:	
UNSPECIFIED TOLERANCES:		
WHOLE DIM (X)	3	
ONE-PLACE (X.X)	1.5	
TWO-PLACE (X.XX)	0.50	
ANGLE	1°	
REFER TO ES0018 FOR FASTENER TIGHTENING GUIDELINES	WEIGHT: (LBS)	FIRST USED: (REF)
		16 259G
DESCRIPTION:		
WATER SYSTEM INSTL		
SHEET: 1 OF 3	ITEM/PART NO: 000211380 / 30071601000	REV:
REF:		1 19-Sep-2016

*300716 *A



SHOWER-HAND HELD, WALL MOUNT
187372-01-CHT

20

280

FAUCET-GALLEY, SNGL CONTROL
192216-01-CHT

DETAIL BF

RT-1
900

A-19 RT-2

FAUCET-LAV
148886-02-CHT

A-19

RT-1
140

A-28

FILTER KIT KIT
160946-03-000
SCREW
000G67-10-12U (2)

DETAIL BF

SECTION BC-BC

BREAKER-VACUUM
125697-04-000
CHECK VALVE
125697-03-000
(MUST BE MOUNTED ABOVE
TOILET FLOOD LEVEL)

4

CLAMP
010497-01-000

TU-10
220

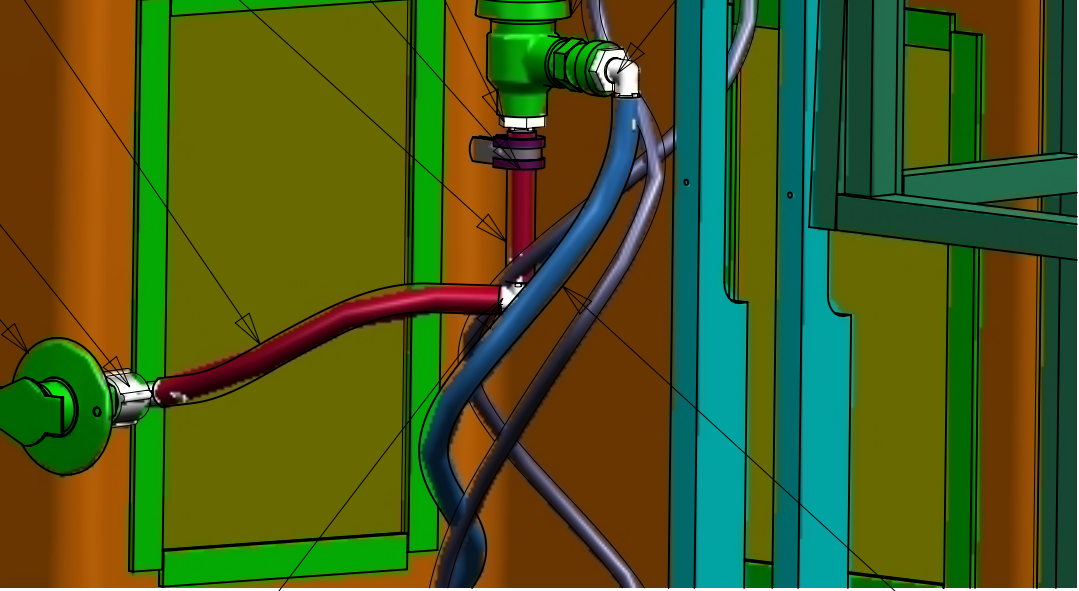
TU-10
80

A-27

E-46

FLUSHING SYSTEM
125697-08-000

TO TOILET



VIEW BE

WASHER-PLASTIC
180671-02-CHT

E-43

TU-9
1950

TU-9
90

GROMMET
071015-13-000

TU-9
50

E-43

DETAIL BF

PANEL-GRAVITY FILL
166584-06-CHT

A-5 9

CI-3 9

CH-2 9

DETAIL BB

S-1

S-1

TU-10
680

T-28

TU-10
430

TU-9
1150

TU-9
620

T-29

TU-9
1240

VIEW BA

DETAIL BD

RT-2

A-27

TU-9
145

E-43

TU-9
380

E-43

E-44

T-28

PW-5

TU-8
325

TU-8
335

E-43

V-11

TU-9
65

CLAMP
010495-04-000 (2)

RIVET
113133-03-CHT (2)

TU-9
60

E-43

CH-5 9

TU-3
530 9

E-28 9

E-44

TU-9
45

E-44

F-9

E-44

TU-9
55

TU-9
865

E-43

T-28

E-43

TU-9
120

TU-9
280

TU-9
600

E-43

T-28

PORT-SPRAY
184487-01-CHT

SHOWER-EXTERIOR
166291-02-000

DETAIL BD
(SHOWN W/OUT SHOWER)

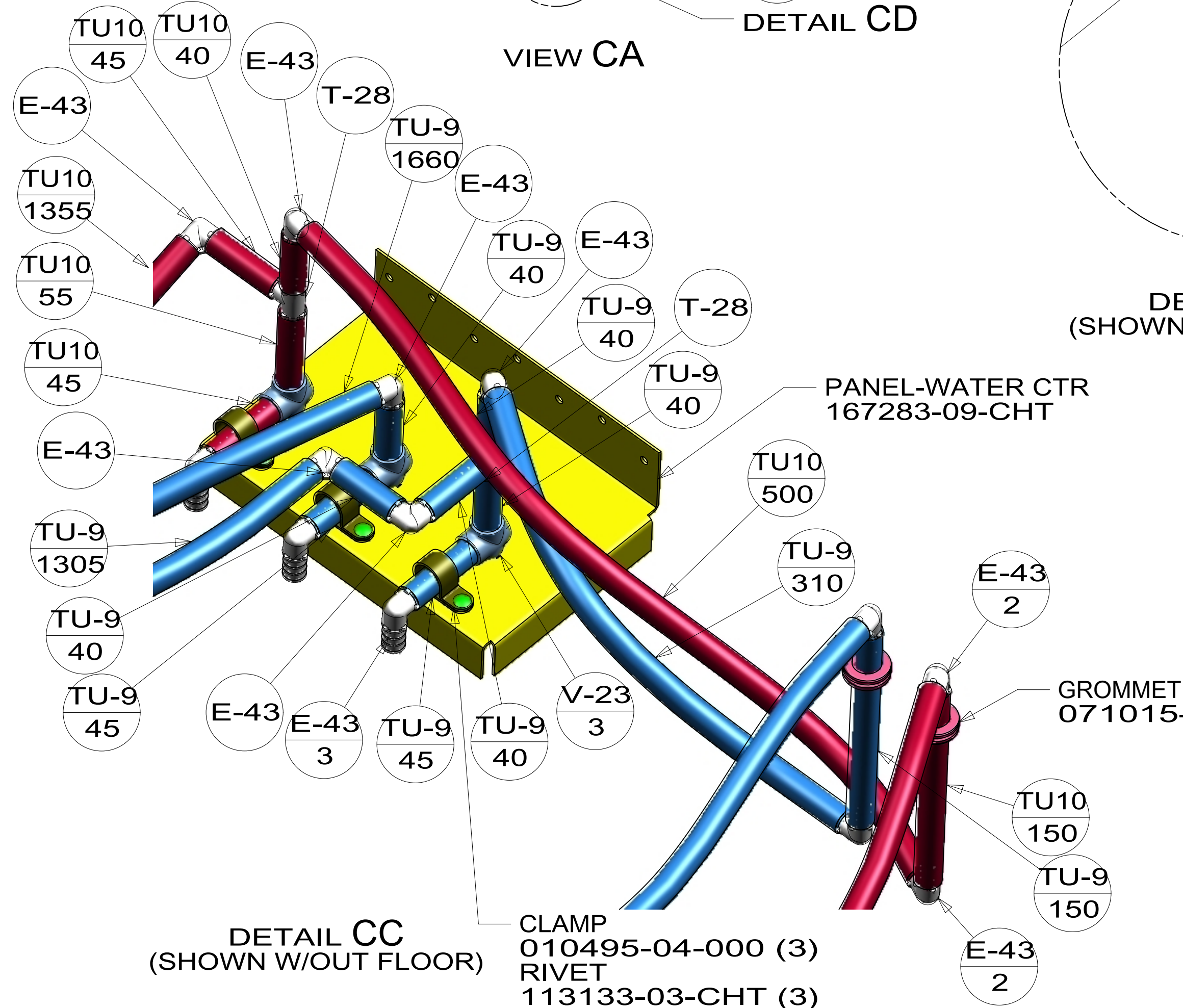
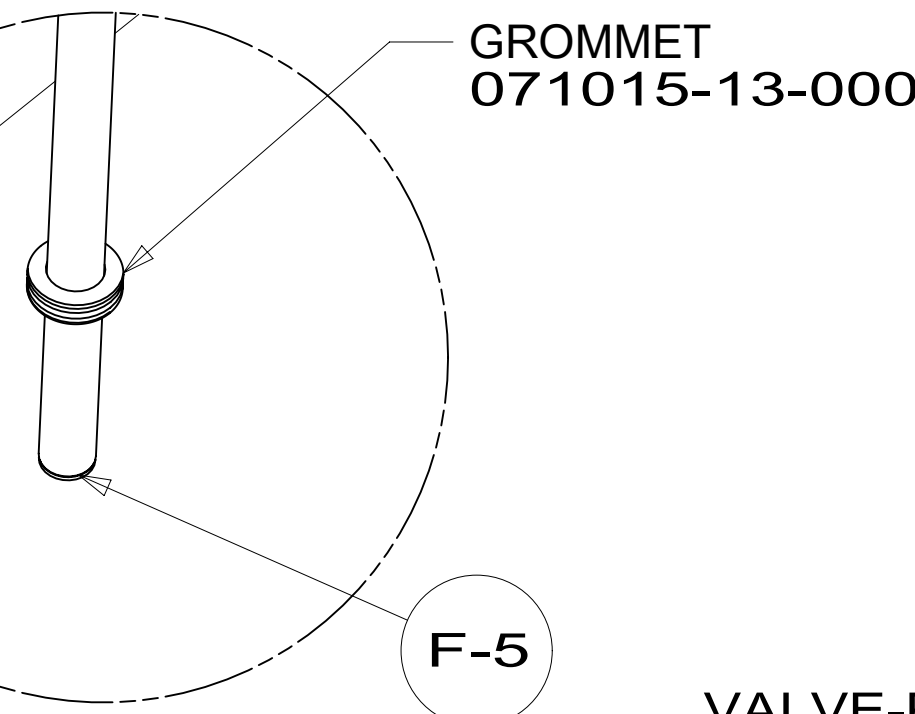
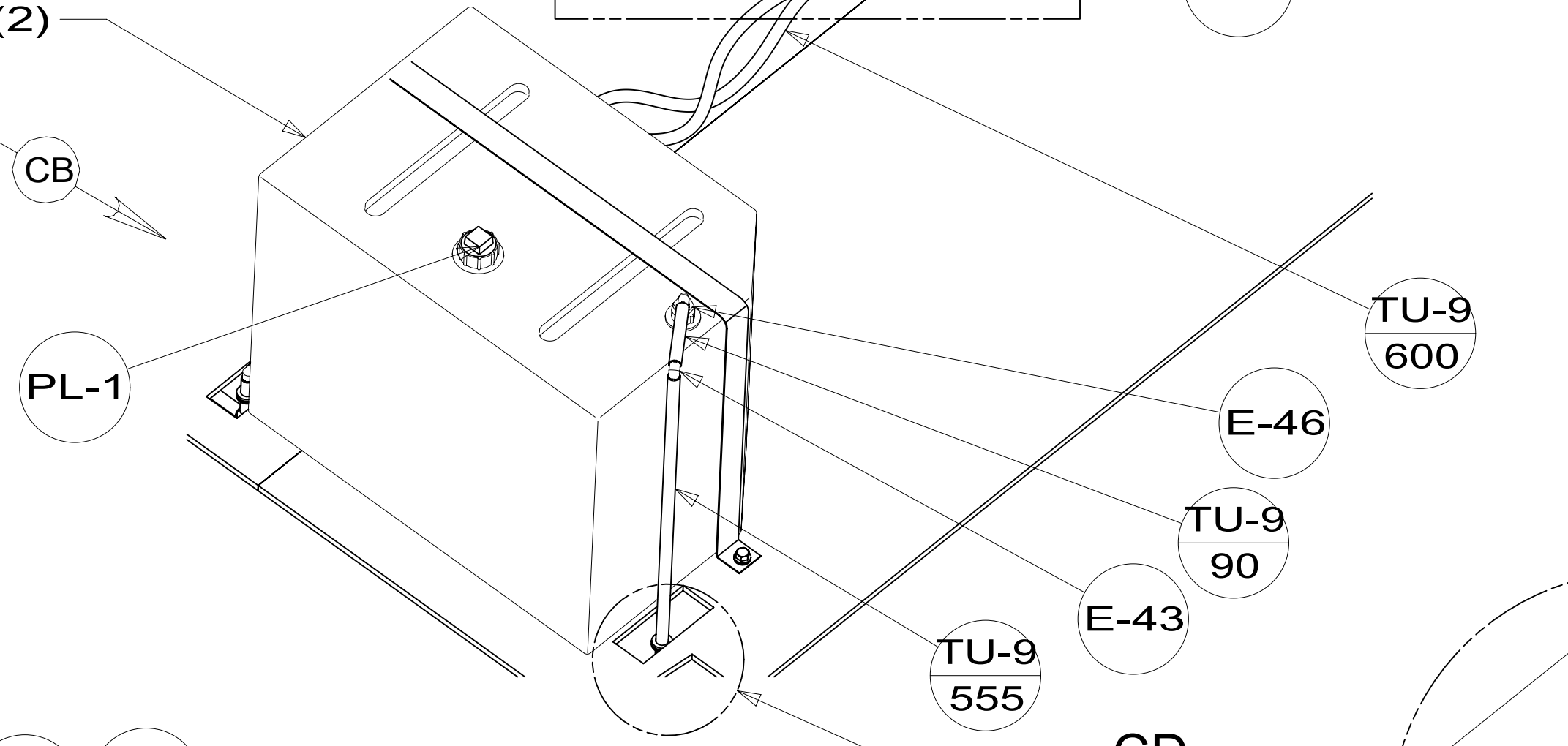
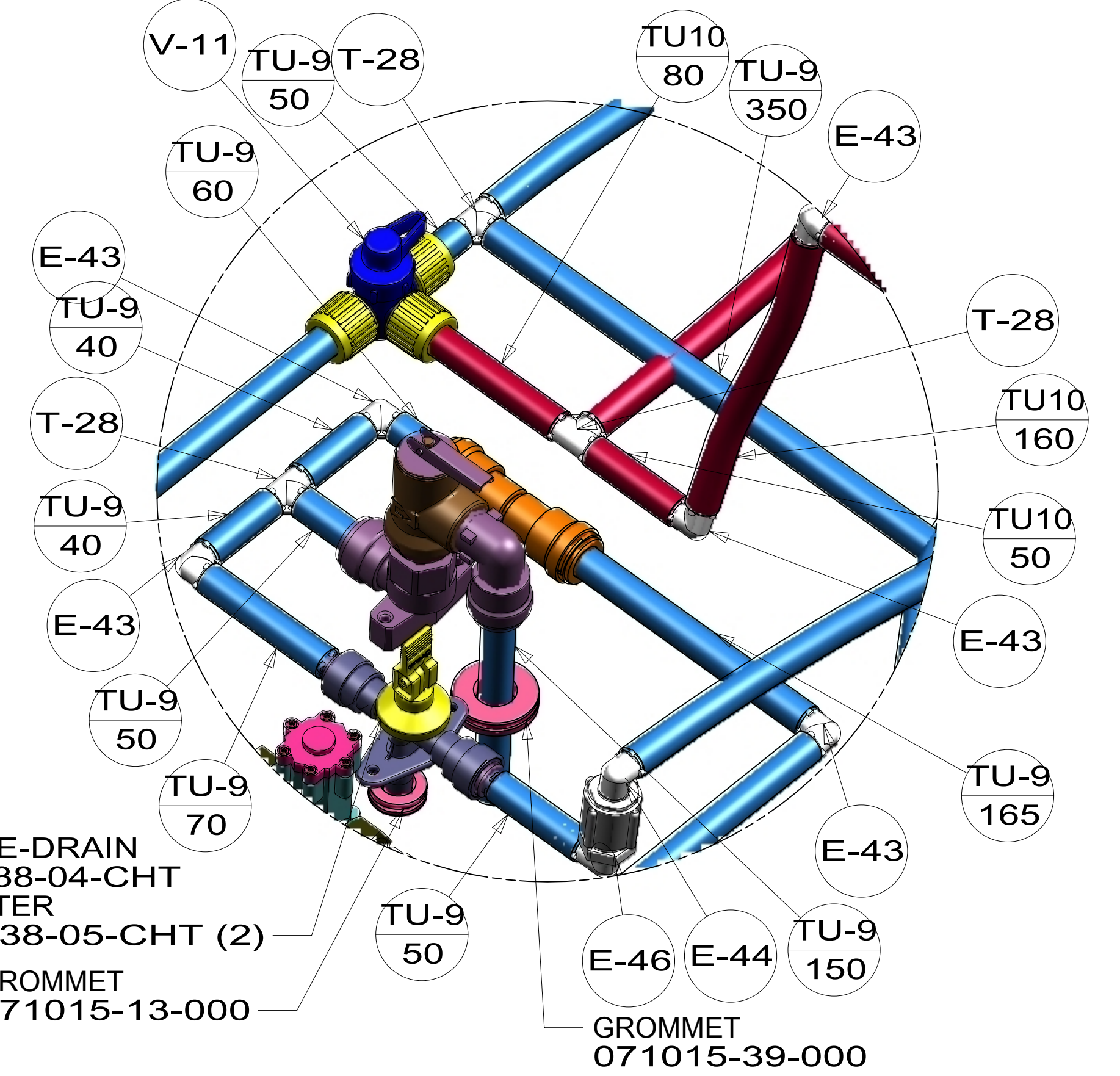
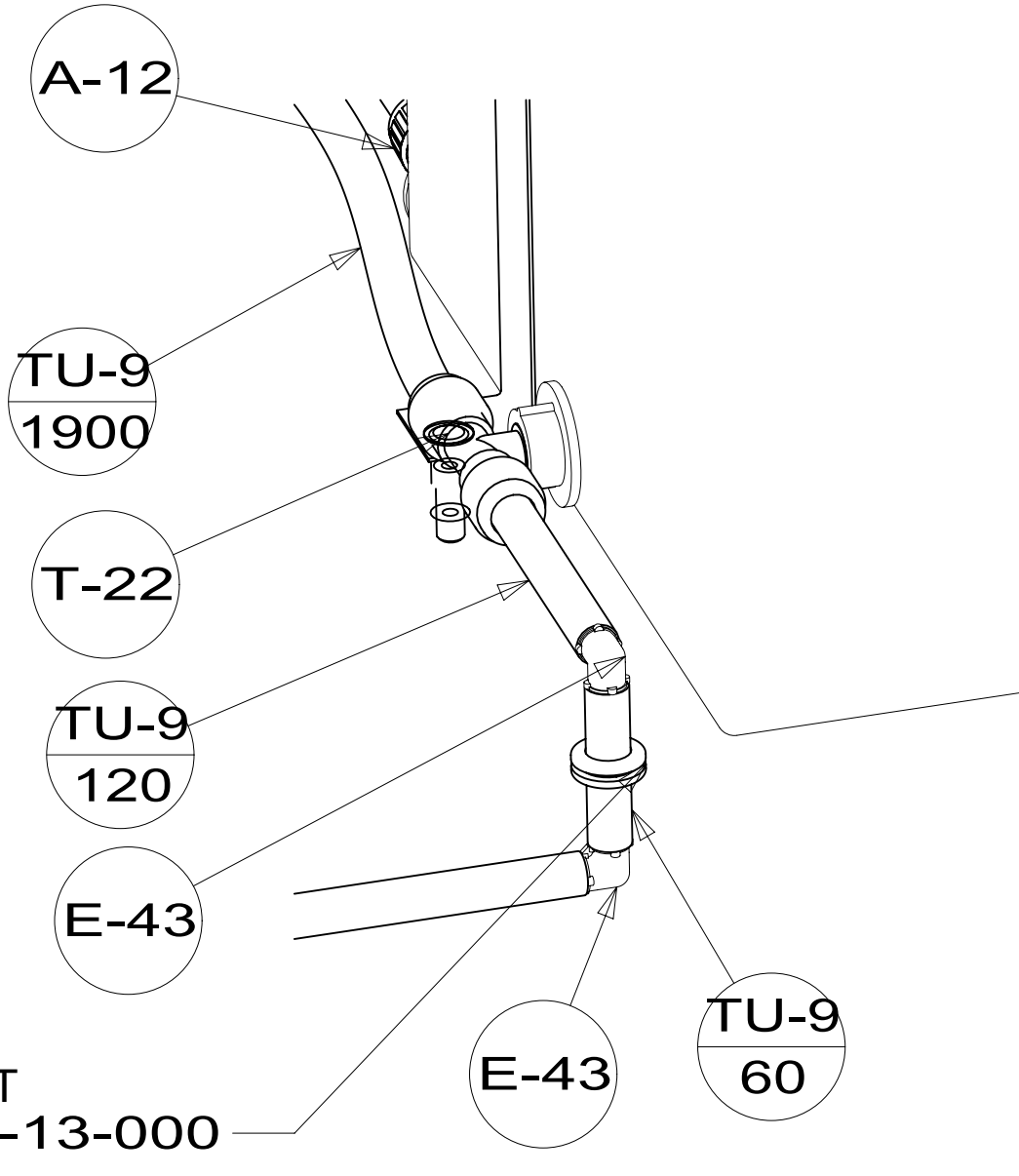
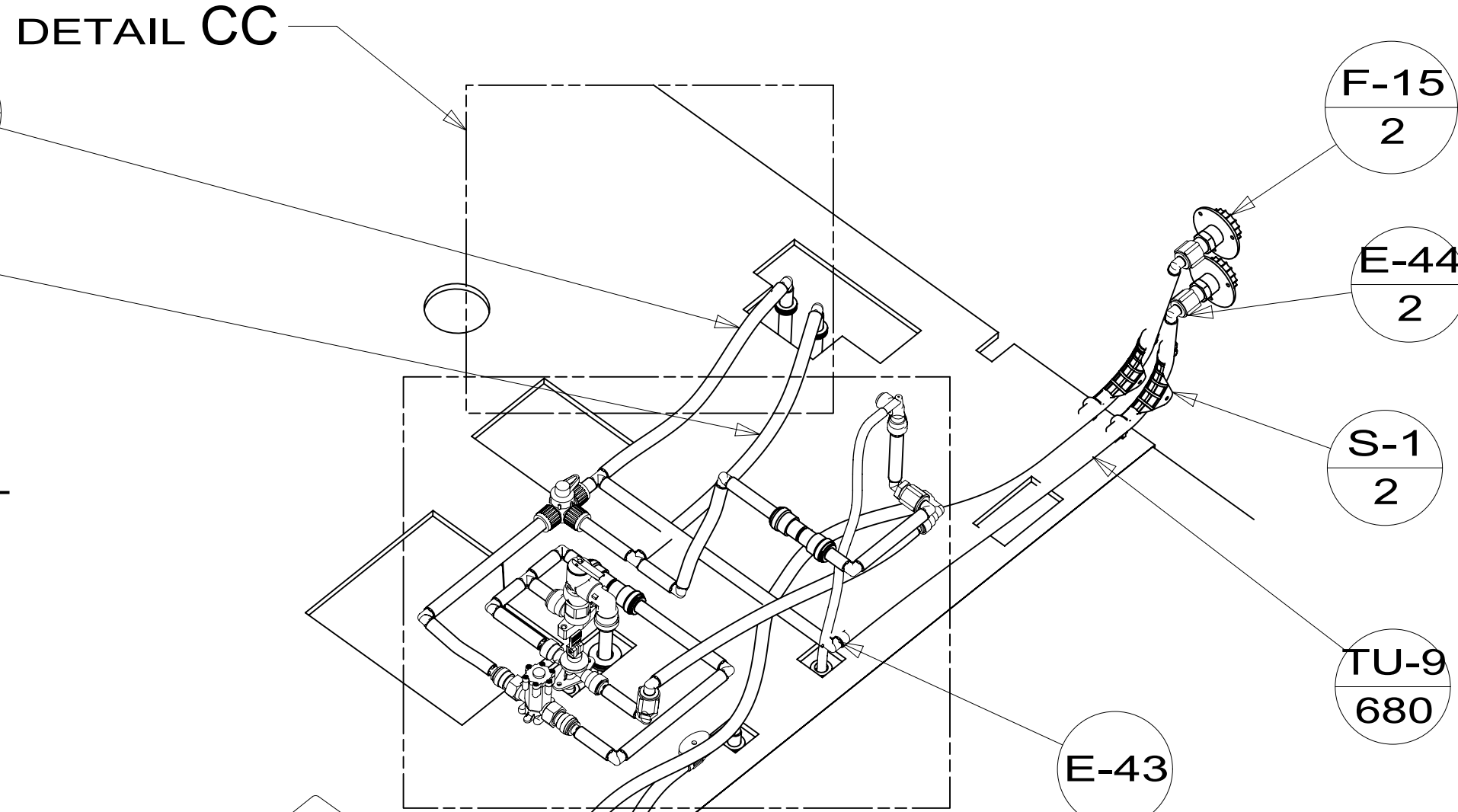
DETAIL BB
(SHOWN W/OUT FLOOR)

PANEL-WATER PUMP
149477-02-CHT
SCREW
000G39-08-16U (4)
FOAM
140364-01-CHT
SCREW
000G39-08-24U (4)

DESCRIPTION:		
WATER SYSTEM INSTL		
SHEET:	ITEM/PART NO:	REV
2 OF 3	000211380 / 30071601000	

300716

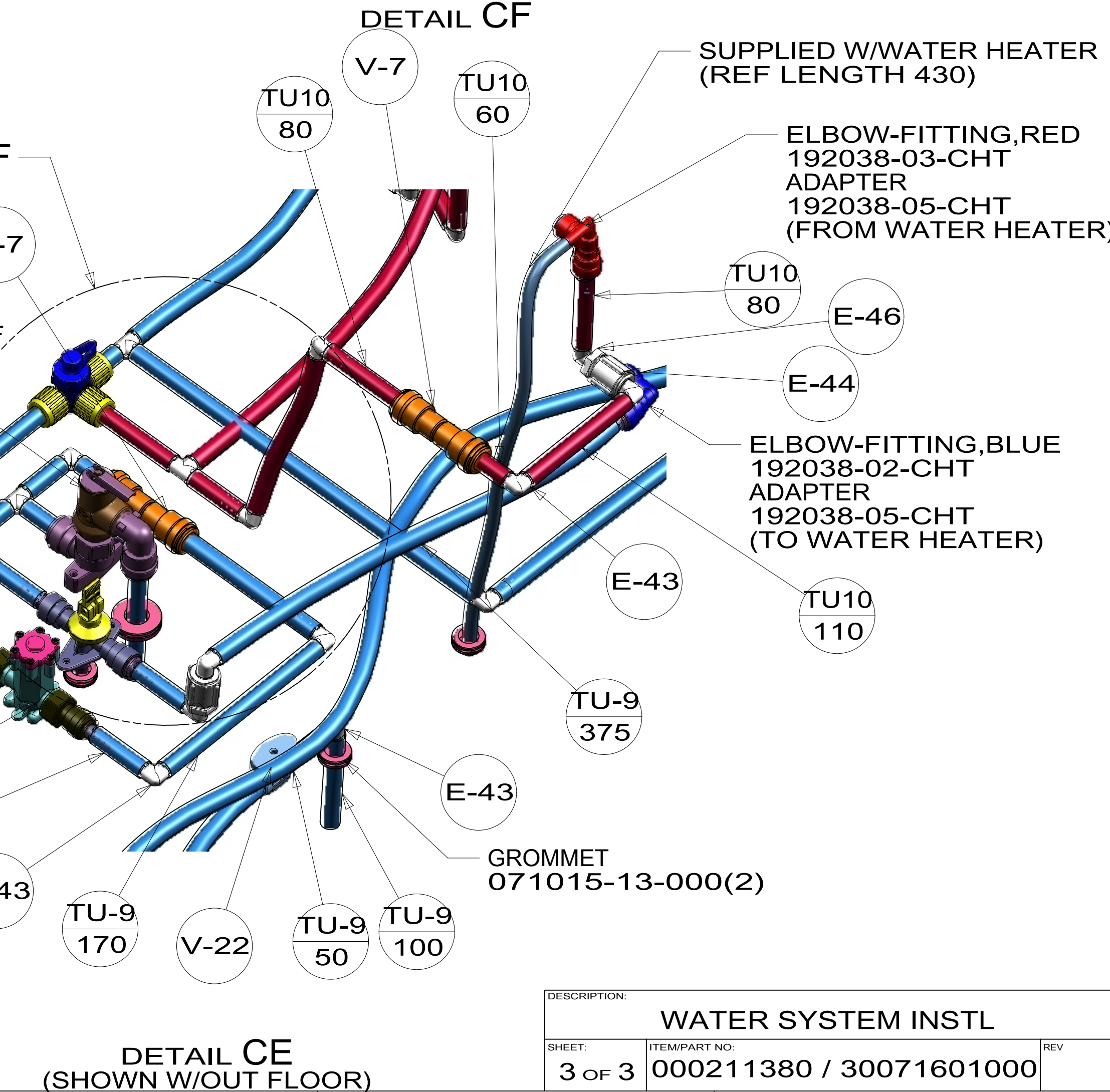
TANK ASM-WATER,23 GAL
 186664-02-000
 STRAP
 118994-09-CHT
 BOLT
 000C26-06-28U(2)
 RIVNUT
 063729-11-000(2)
 NUT-SERT
 039715-06-000(2)



PRESSURE REDUCER
 192038-06-CHT
 ADAPTER
 192038-05-CHT (2)

VALVE-PRESSURE RELIEF
 192038-08-CHT

DETAIL CF



DETAIL CF

SUPPLIED W/WATER HEATER
 (REF LENGTH 430)

ELBOW-FITTING,RED
 192038-03-CHT
 ADAPTER
 192038-05-CHT
 (FROM WATER HEATER)

ELBOW-FITTING,BLUE
 192038-02-CHT
 ADAPTER
 192038-05-CHT
 (TO WATER HEATER)

DESCRIPTION: WATER SYSTEM INSTL		
SHEET: 3 OF 3	ITEM/PART NO: 000211380 / 30071601000	REV