

△ 2 LOCATED IN SLIDEOUT ROOF.

1. AT MINIMUM ALL WIRES TO BE SUPPORTED AND SECURED PER CODE REQUIREMENTS. USE CLAMP 10495 OR 10497 OR WIRE TIE 8343 OR 108046 AND SCREW G67-XX-XXX OR G56-XX-XXX AS APPROPRIATE FOR INSTALLATION.

NOTES:

265 CODES/STANDARDS-CSA/CMVSS

1B1 CODES/STANDARDS USA

1B1 265

FOR ELECTRICAL TORQUE SPECIFICATIONS SEE DWG NO. 128783-01-000

FOR ELECTRICAL CALLOUTS SEE DWG NO. 121339-01-000

DESCRIPTION:

WIRING INSTL-BODY, 12V

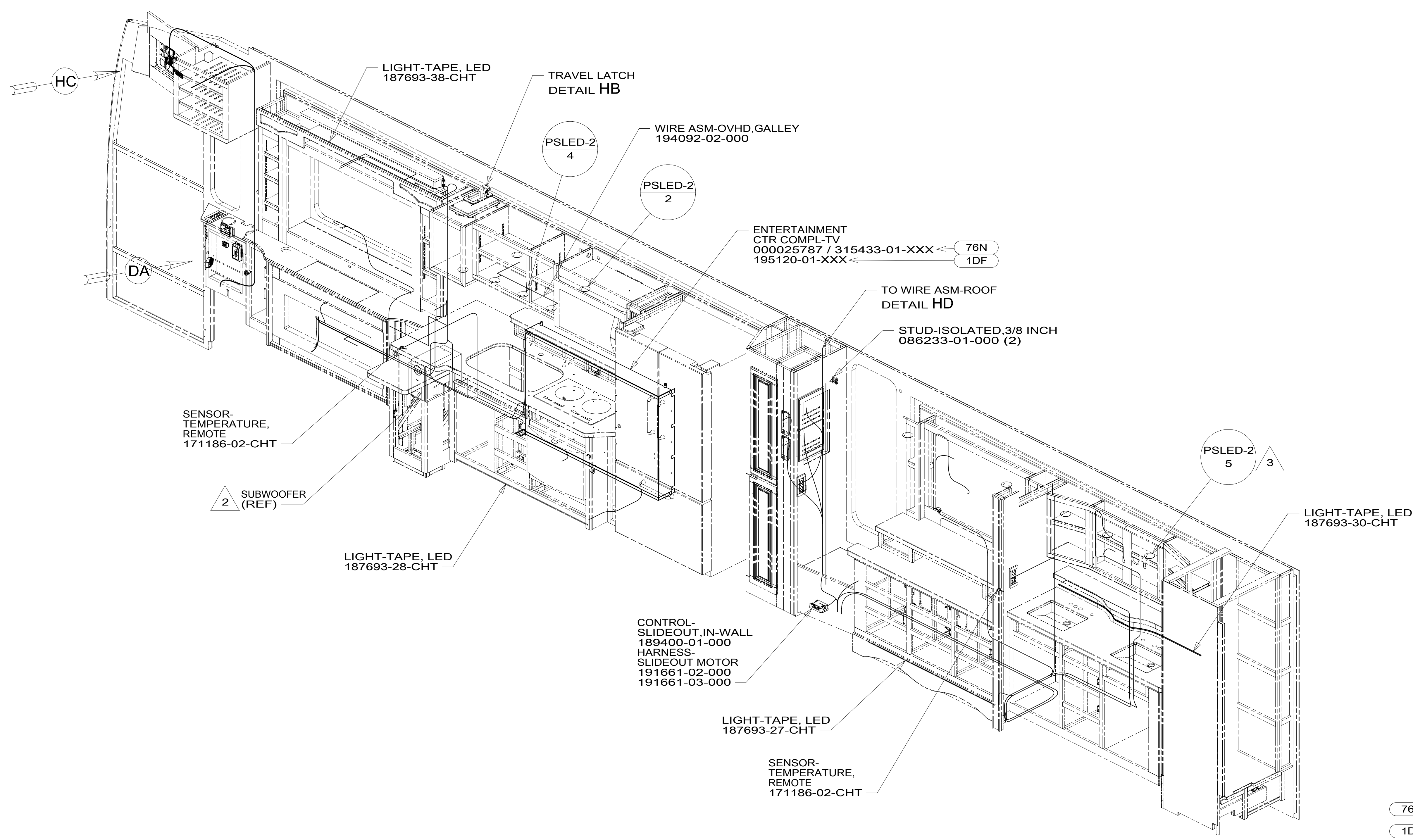
SHEET: 2 OF 9

ITEM/PART NO: 000210493 / 30237901000

REV

8 7 6 5 4 3 2 1

D
C
B
A



- 3 LOCATED IN SLIDEOUT ROOF.
- 2 SEE WIRING INSTL-TV/DVD FOR ADDITIONAL INFORMATION.

1. AT MINIMUM ALL WIRES TO BE SUPPORTED AND SECURED PER CODE REQUIREMENTS. USE CLAMP 10495 OR 10497 OR WIRE TIE 8343 OR 108046 AND SCREW G67-XX-XXX OR G56-XX-XXX AS APPROPRIATE FOR INSTALLATION.

NOTES:

- 76N EXT ENTERTAIN CTR-UPGRADE
- 1DF EXT TV ENTERTAINMENT CENTER
- 265 CODES/STANDARDS-CSA/CMVSS
- 1B1 CODES/STANDARDS USA

FOR ELECTRICAL TORQUE SPECIFICATIONS SEE DWG NO. 128783-01-000

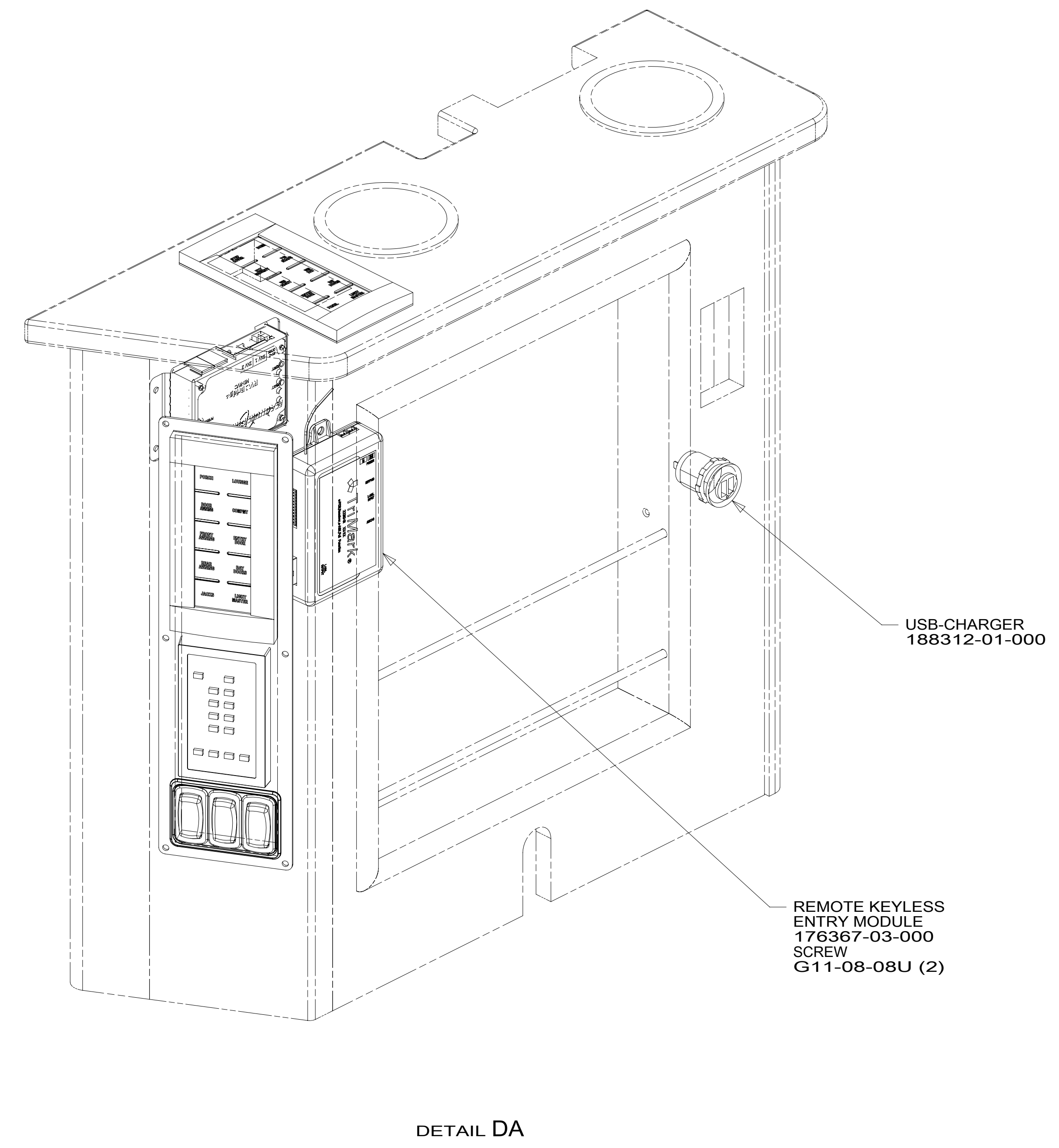
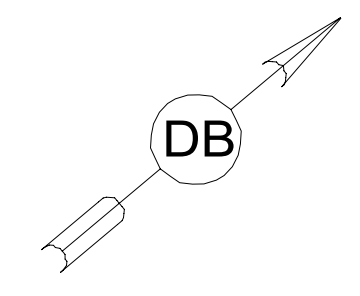
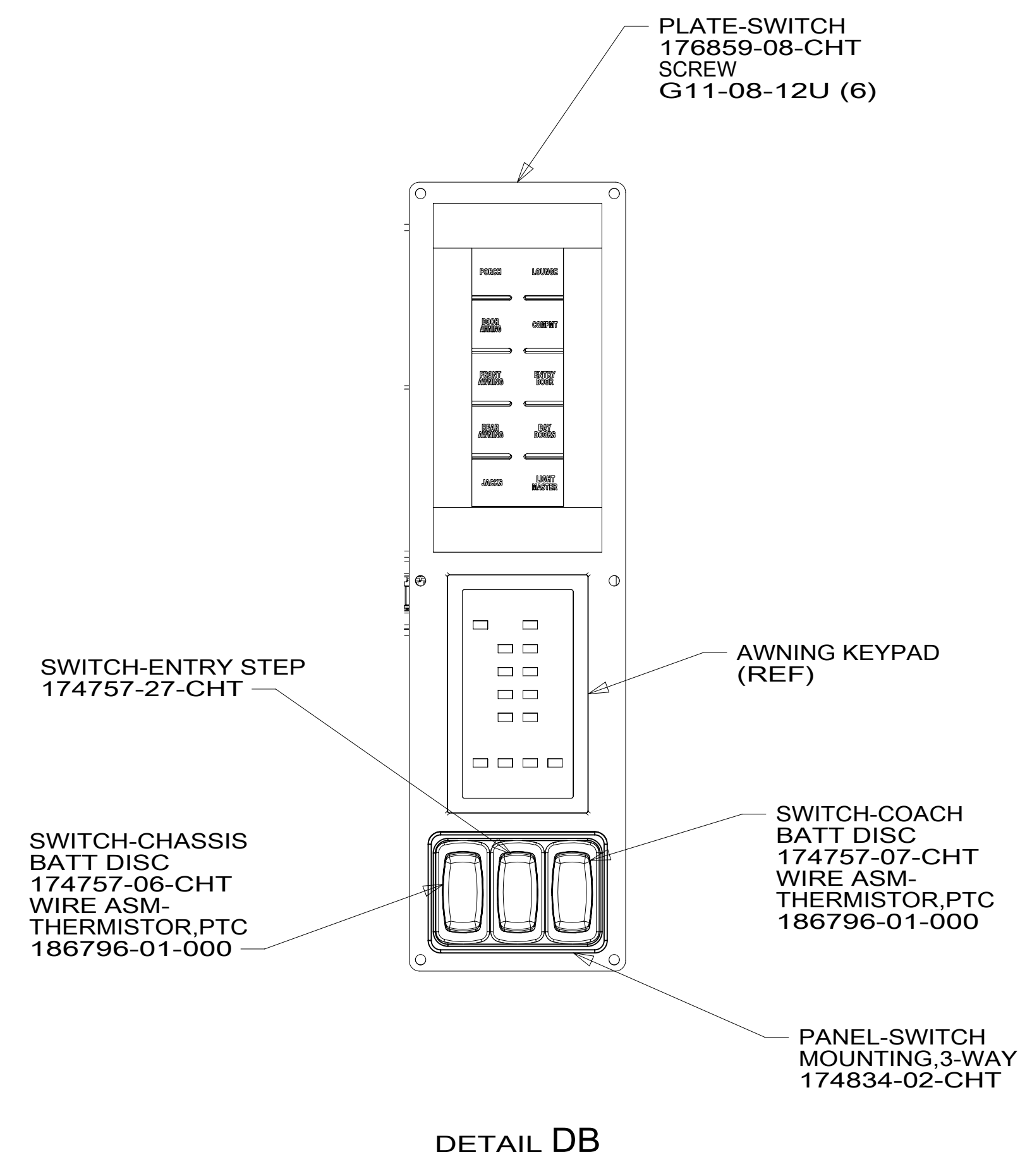
FOR ELECTRICAL CALLOUTS SEE DWG NO. 121339-01-000

DESCRIPTION:	1B1 265	
WIRING INSTL-BODY, 12V		
SHEET:	ITEM/PART NO:	REV
3 OF 9	000210493 / 30237901000	

8 7 6 5 4 3 2 1 24-Oct-2016

8 7 6 5 4 3 2 1

D
C
B
A



NOTES:

1. AT MINIMUM ALL WIRES TO BE SUPPORTED AND SECURED PER CODE REQUIREMENTS. USE CLAMP 10495 OR 10497 OR WIRE TIE 8343 OR 108046 AND SCREW G67-XX-XXX OR G56-XX-XXX AS APPROPRIATE FOR INSTALLATION.

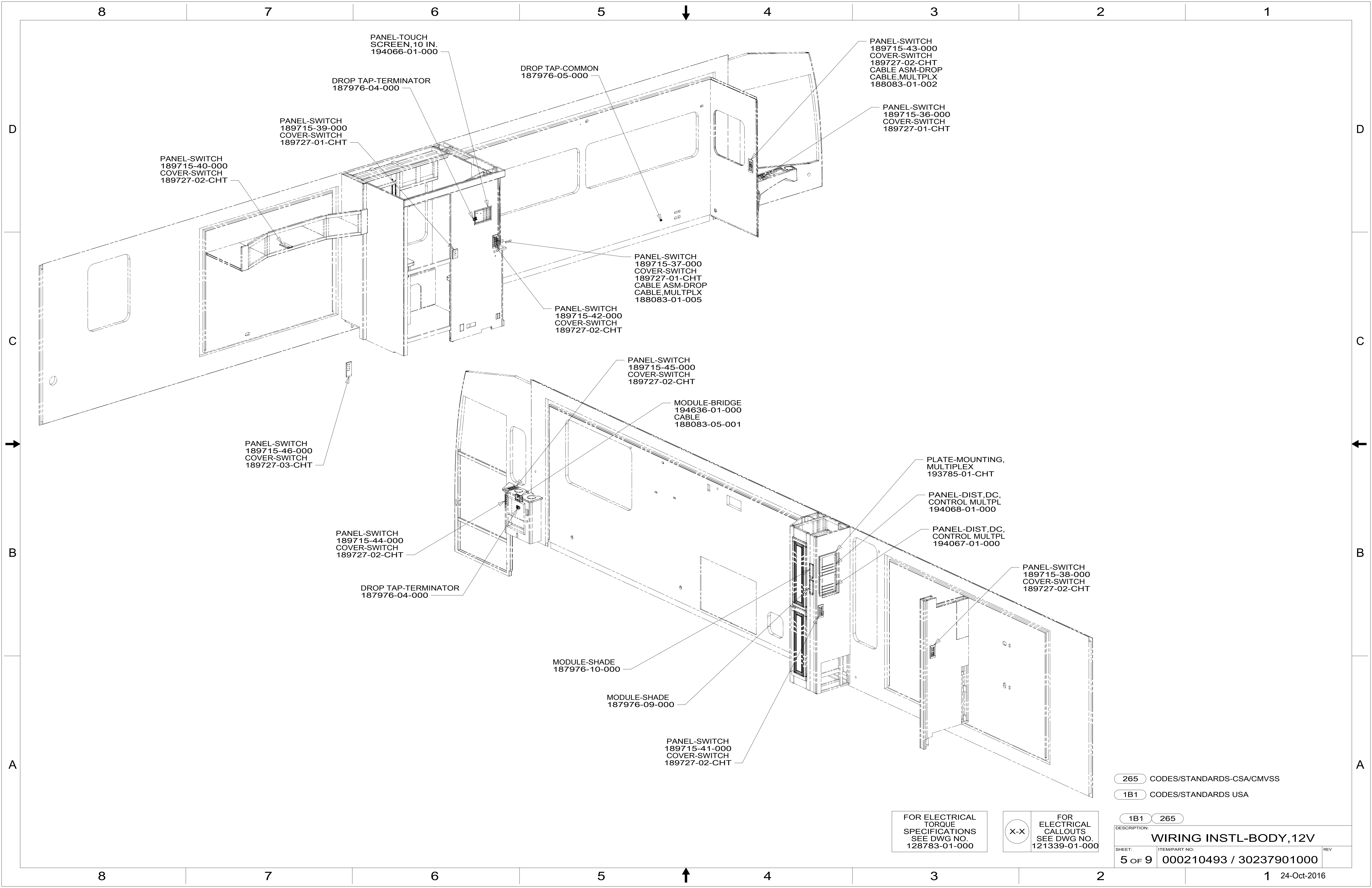
FOR ELECTRICAL TORQUE SPECIFICATIONS SEE DWG NO. 128783-01-000

FOR ELECTRICAL CALLOUTS SEE DWG NO. 121339-01-000

265 CODES/STANDARDS-CSA/CMVSS
1B1 CODES/STANDARDS USA

DESCRIPTION: WIRING INSTL-BODY, 12V	
SHEET: 4 OF 9	ITEM/PART NO: 000210493 / 30237901000
REV 1 24-Oct-2016	

8 7 6 5 4 3 2 1



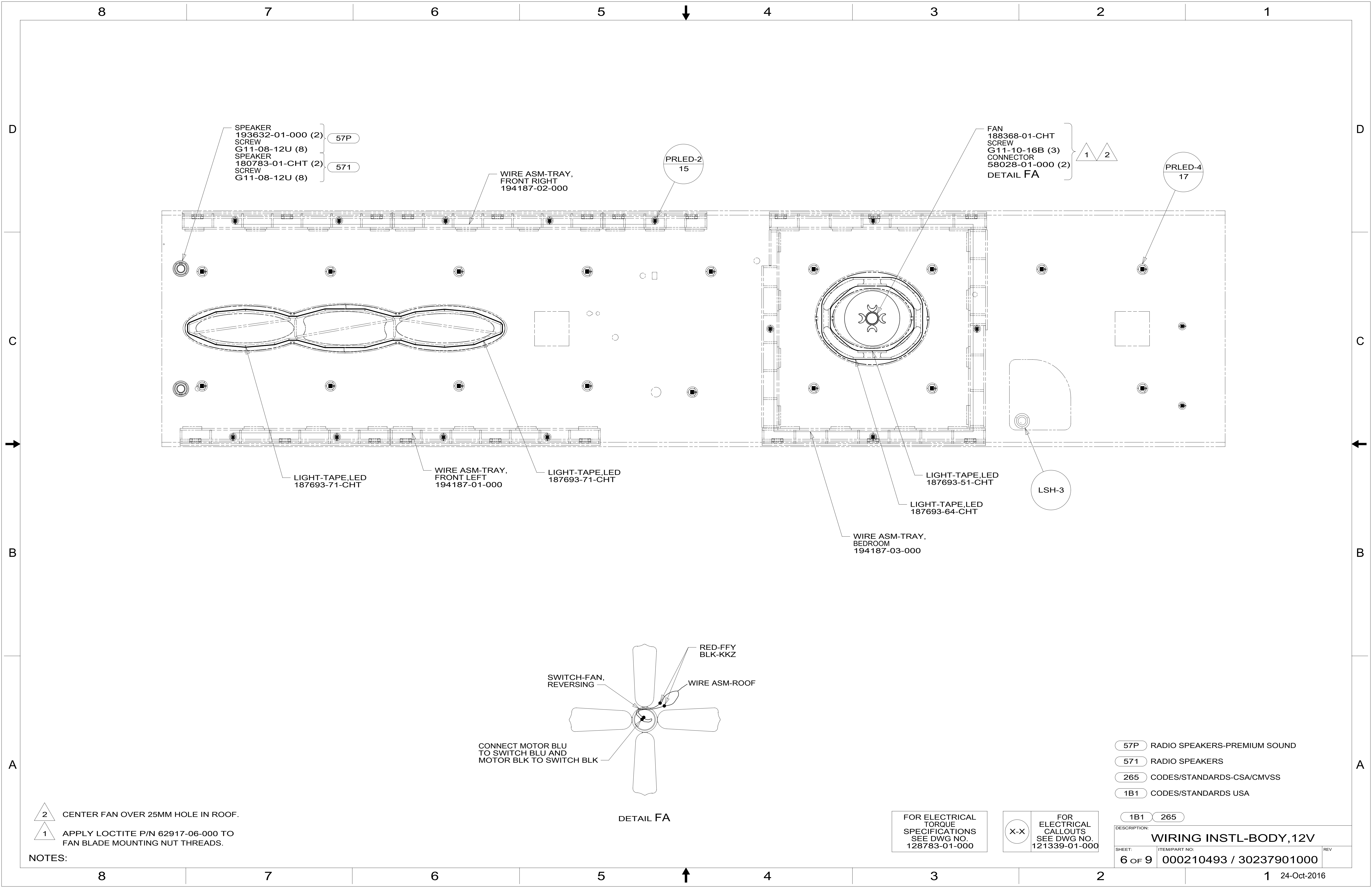
265 CODES/STANDARDS-CSA/CMVSS
 1B1 CODES/STANDARDS USA

FOR ELECTRICAL TORQUE SPECIFICATIONS SEE DWG NO. 128783-01-000

X-X

FOR ELECTRICAL CALLOUTS SEE DWG NO. 121339-01-000

DESCRIPTION:	1B1 265	
WIRING INSTL-BODY, 12V		
SHEET:	ITEM/PART NO.:	REV
5 OF 9	000210493 / 30237901000	



SPEAKER
193632-01-000 (2) } 57P
SCREW
G11-08-12U (8)
SPEAKER
180783-01-CHT (2) } 571
SCREW
G11-08-12U (8)

WIRE ASM-TRAY,
FRONT RIGHT
194187-02-000

PRLED-2
15

FAN
188368-01-CHT
SCREW
G11-10-16B (3)
CONNECTOR
58028-01-000 (2)
DETAIL FA

1 2

PRLED-4
17

LIGHT-TAPE,LED
187693-71-CHT

WIRE ASM-TRAY,
FRONT LEFT
194187-01-000

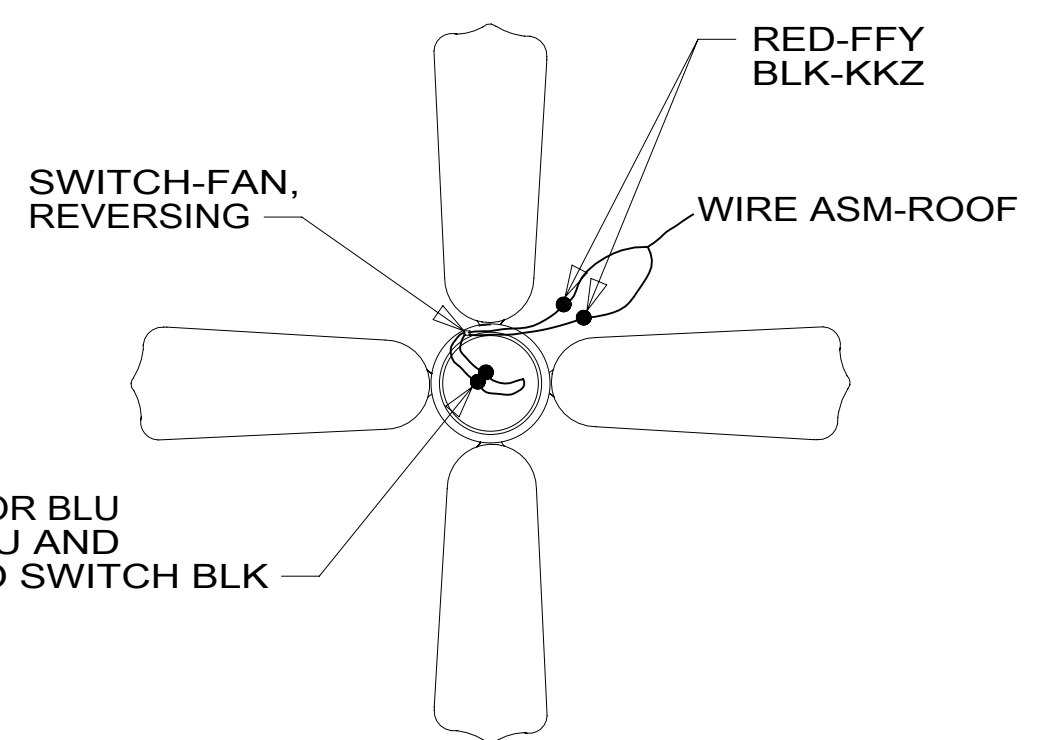
LIGHT-TAPE,LED
187693-71-CHT

LIGHT-TAPE,LED
187693-51-CHT

LSH-3

LIGHT-TAPE,LED
187693-64-CHT

WIRE ASM-TRAY,
BEDROOM
194187-03-000



DETAIL FA

- 57P RADIO SPEAKERS-PREMIUM SOUND
- 571 RADIO SPEAKERS
- 265 CODES/STANDARDS-CSA/CMVSS
- 1B1 CODES/STANDARDS USA

NOTES:

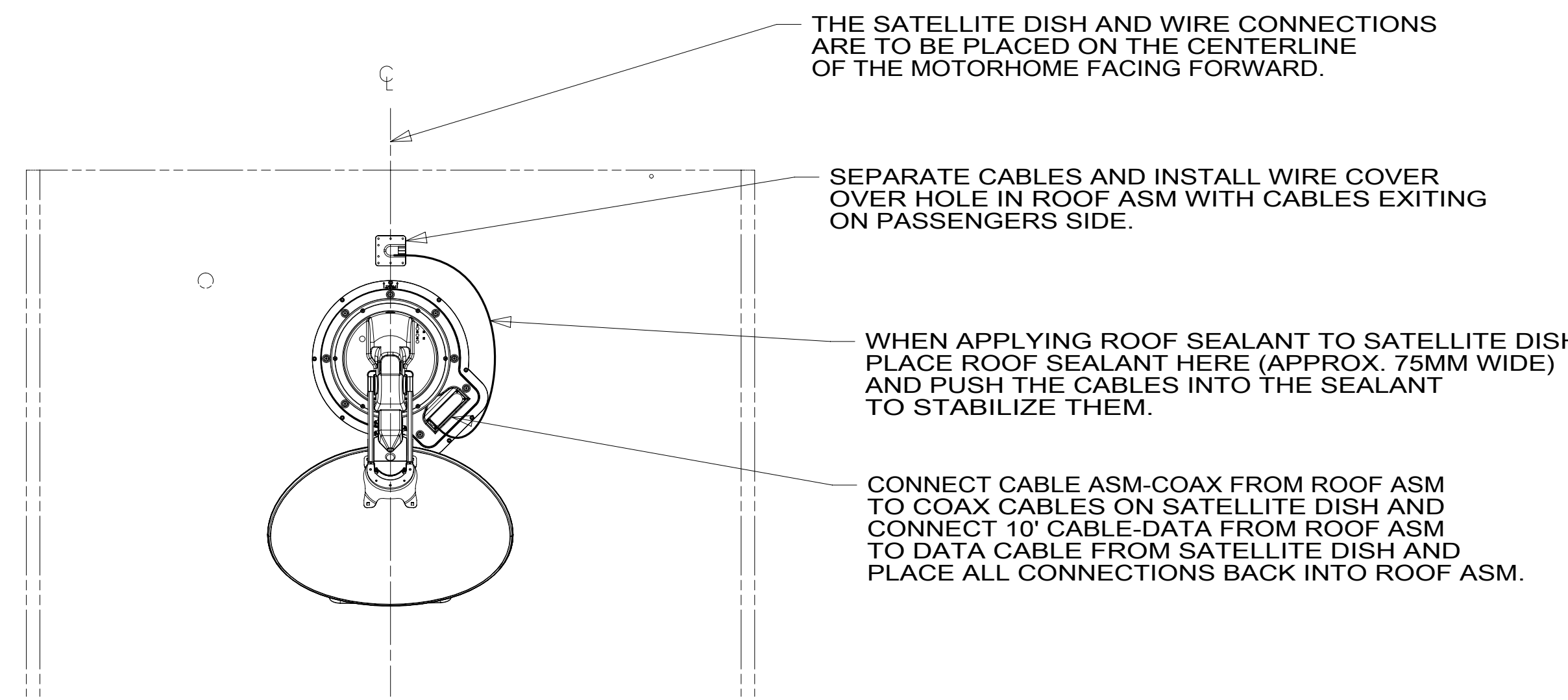
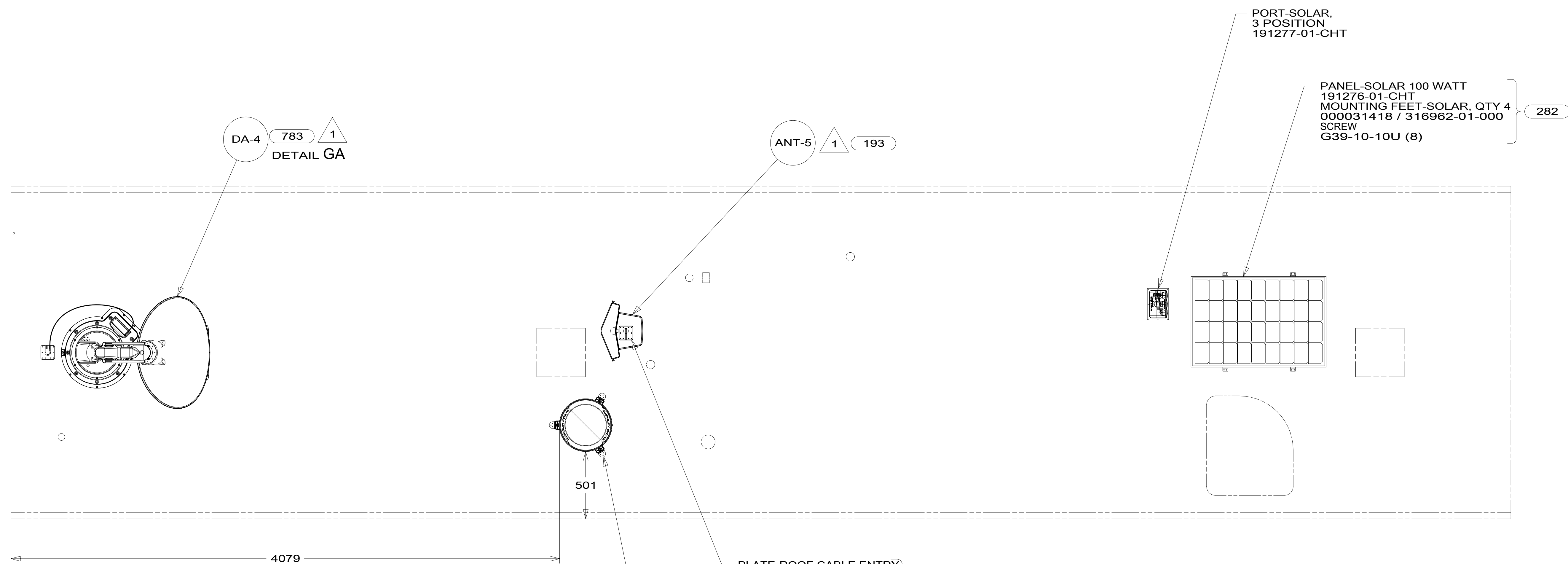
2 CENTER FAN OVER 25MM HOLE IN ROOF.

1 APPLY LOCTITE P/N 62917-06-000 TO FAN BLADE MOUNTING NUT THREADS.

FOR ELECTRICAL
TORQUE
SPECIFICATIONS
SEE DWG NO.
128783-01-000

FOR ELECTRICAL
CALLOUTS
SEE DWG NO.
121339-01-000

DESCRIPTION: WIRING INSTL-BODY, 12V		
SHEET: 6 OF 9	ITEM/PART NO: 000210493 / 30237901000	REV
1B1 265		
24-Oct-2016		



THE SATELLITE DISH AND WIRE CONNECTIONS ARE TO BE PLACED ON THE CENTERLINE OF THE MOTORHOME FACING FORWARD.

SEPARATE CABLES AND INSTALL WIRE COVER OVER HOLE IN ROOF ASM WITH CABLES EXITING ON PASSENGERS SIDE.

WHEN APPLYING ROOF SEALANT TO SATELLITE DISH, PLACE ROOF SEALANT HERE (APPROX. 75MM WIDE) AND PUSH THE CABLES INTO THE SEALANT TO STABILIZE THEM.

CONNECT CABLE ASM-COAX FROM ROOF ASM TO COAX CABLES ON SATELLITE DISH AND CONNECT 10' CABLE-DATA FROM ROOF ASM TO DATA CABLE FROM SATELLITE DISH AND PLACE ALL CONNECTIONS BACK INTO ROOF ASM.

DETAIL GA

- 196 TV ANT-AUTO,DIRECTIONAL AMPL
- 193 TV ANT-DIGITAL AMPLIFIED
- 783 SATELLITE HD TV SYSTEM AUTOC
- 282 SOLAR PANEL - 100 WATT
- 265 CODES/STANDARDS-CSA/CMVSS
- 1B1 CODES/STANDARDS USA

1 SEE MANUFACTURER'S INSTALLATION FOR ADDITIONAL INFORMATION.

FOR ELECTRICAL TORQUE SPECIFICATIONS SEE DWG NO. 128783-01-000

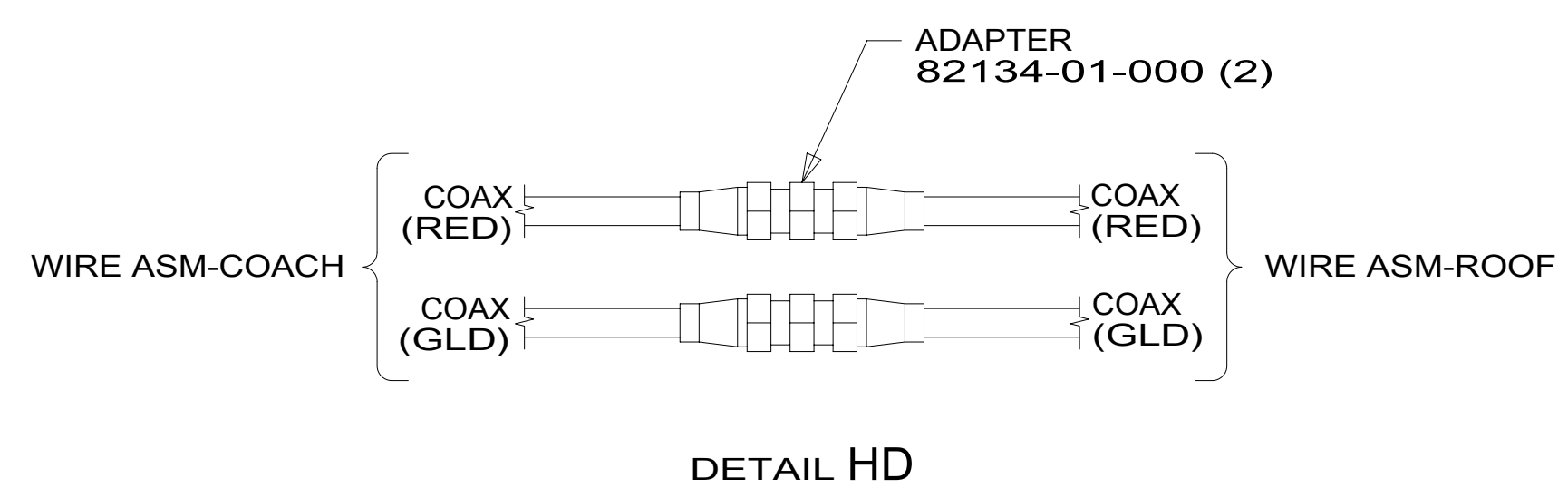
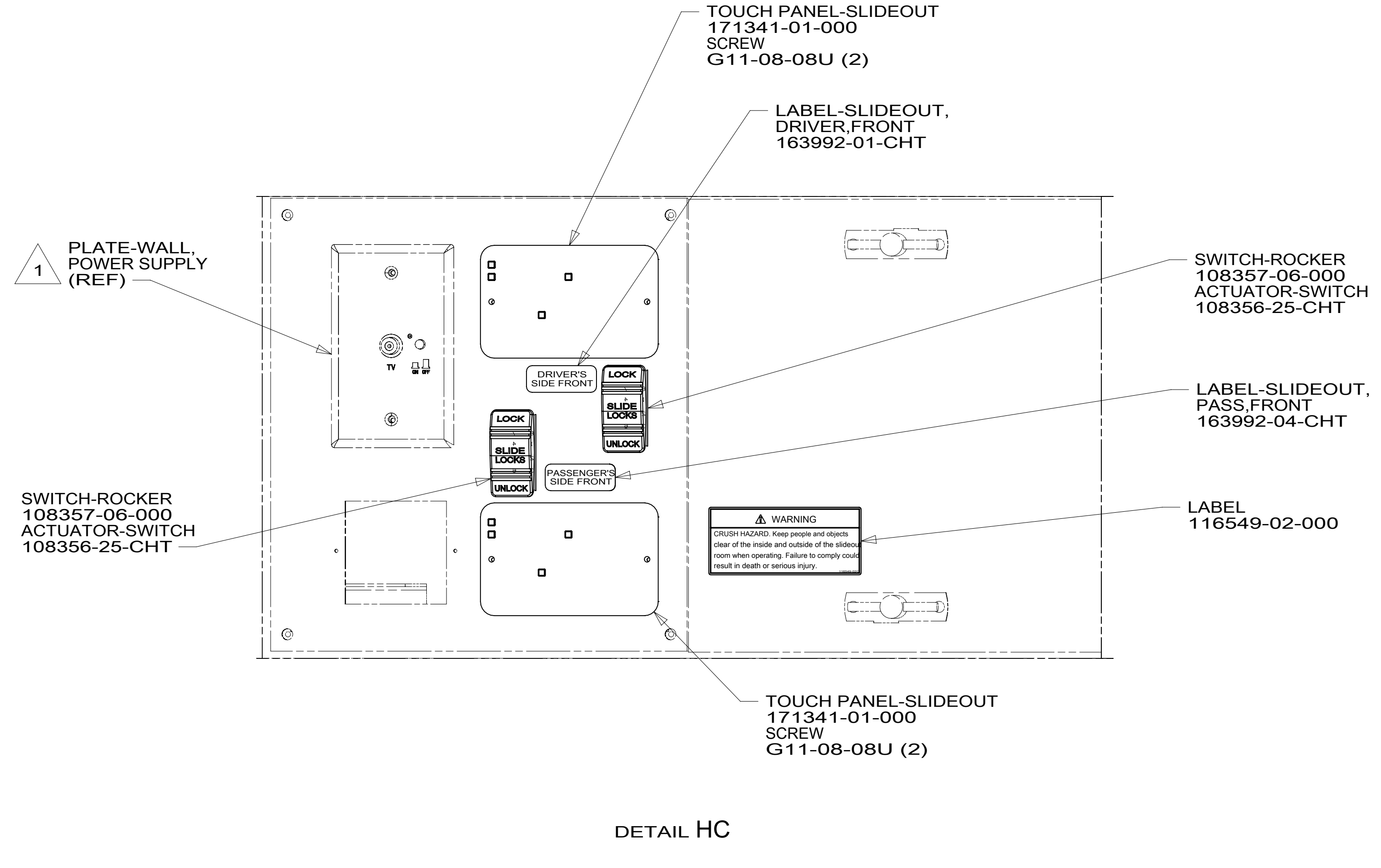
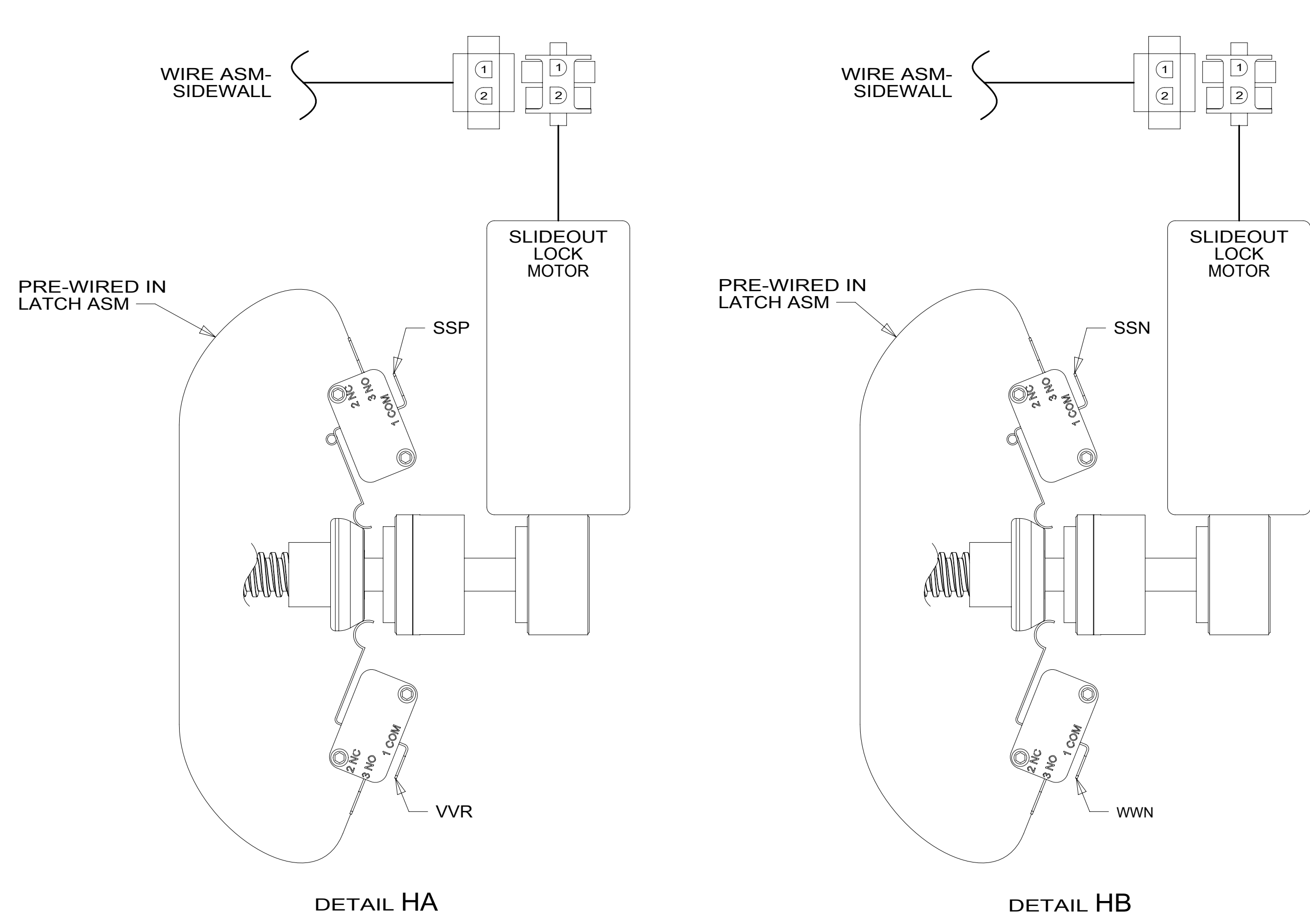
FOR ELECTRICAL CALLOUTS SEE DWG NO. 121339-01-000

DESCRIPTION:	1B1 265	
WIRING INSTL-BODY, 12V		
SHEET:	ITEM/PART NO:	REV
7 OF 9	000210493 / 30237901000	

8 7 6 5 4 3 2 1

D

D



1 SEE WIRING INSTL-TV/DVD FOR ADDITIONAL INFORMATION.

NOTES:

FOR ELECTRICAL TORQUE SPECIFICATIONS SEE DWG NO. 128783-01-000

FOR ELECTRICAL CALLOUTS SEE DWG NO. 121339-01-000

265 CODES/STANDARDS-CSA/CMVSS

1B1 CODES/STANDARDS USA

DESCRIPTION:		1B1 265
WIRING INSTL-BODY, 12V		
SHEET:	ITEM/PART NO.:	REV
8 OF 9	000210493 / 30237901000	

8 7 6 5 4 3 2 1 24-Oct-2016

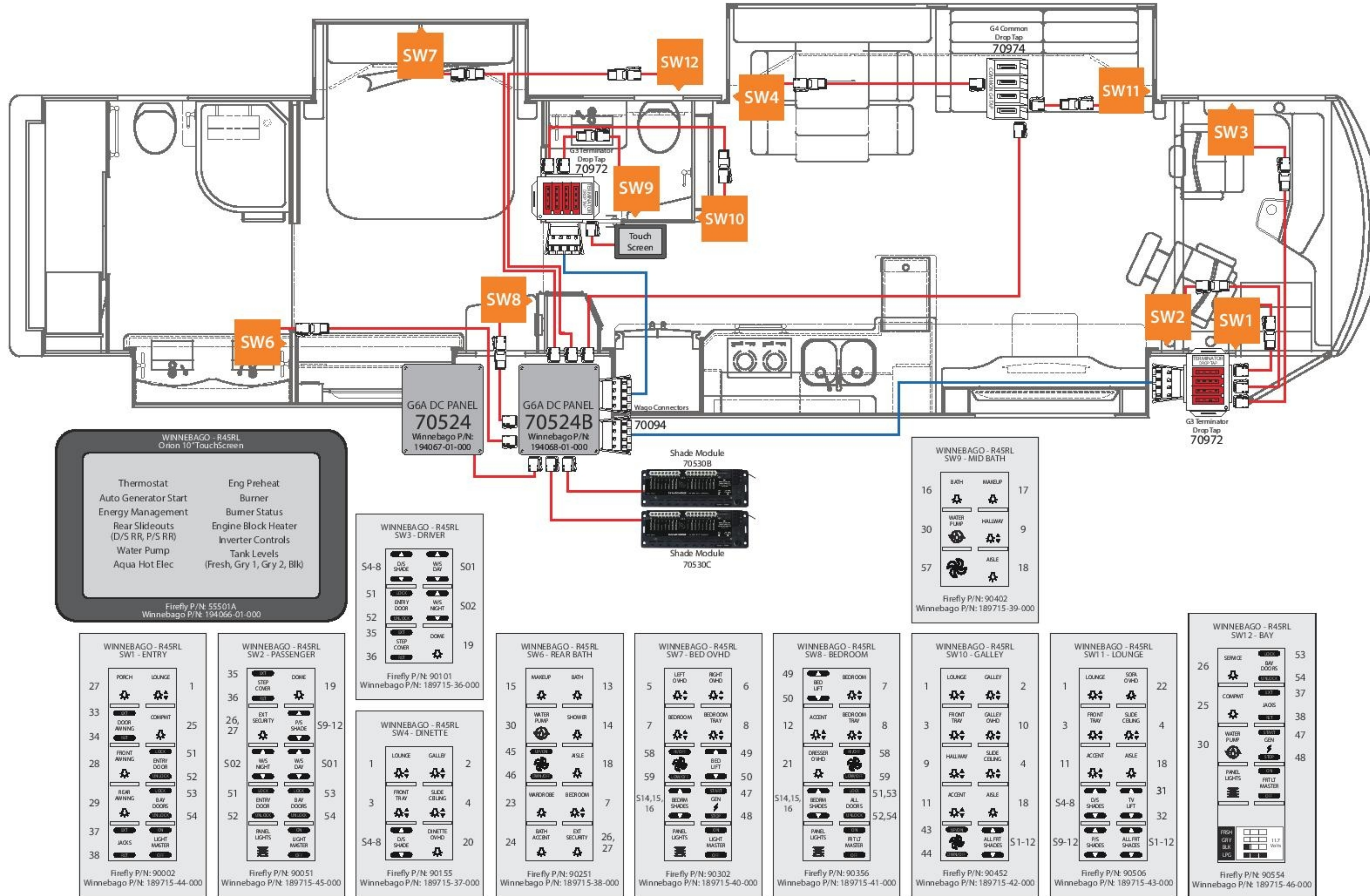
WINNEBAGO - R45RL
 SSP-14 NETWORK WIRING DIAGRAM
 SWITCH PANEL LAYOUT
 REV 1v2 6/23/15

Drop Cable Connections



NETWORK LEGEND

- TRUNK CABLE —
- DROP CABLE —
- SWITCH POSITION ■



WINNEBAGO - R45RL
Orion 10" TouchScreen

Thermostat	Eng Preheat
Auto Generator Start	Burner
Energy Management	Burner Status
Rear Slideouts (D/S RR, P/S RR)	Engine Block Heater
Water Pump	Inverter Controls
Aqua Hot Elec	Tank Levels (Fresh, Gry 1, Gry 2, Blk)

Firefly P/N: 55501A
Winnebago P/N: 194066-01-000

WINNEBAGO - R45RL
SW3 - DRIVER

54-8	DIS SHADE	WS DAY	501
51	ENTRY DOOR	WS NIGHT	502
52	STEP COVER	DOHIE	19
36			

Firefly P/N: 90101
Winnebago P/N: 189715-36-000

WINNEBAGO - R45RL
SW9 - MID BATH

16	BATH	WATER PUMP	17
30	WATER PUMP	HALLWAY	9
57		ASLE	18

Firefly P/N: 90402
Winnebago P/N: 189715-39-000

WINNEBAGO - R45RL
SW1 - ENTRY

27	PORCH	1
33	DOOR AWNING	25
34	FRONT AWNING	51
28	FRONT AWNING	52
29	REAR AWNING	53
37	JACKS	54
38	LIGHT MASTER	

Firefly P/N: 90002
Winnebago P/N: 189715-44-000

WINNEBAGO - R45RL
SW2 - PASSENGER

35	STEP COVER	DOHIE	19
36	EXT SECURITY	FR SHADE	S9-12
26, 27	WS NIGHT	WS DAY	501
51	ENTRY DOOR	BAY DOORS	53
52	PANEL LIGHTS	LIGHT MASTER	54

Firefly P/N: 90051
Winnebago P/N: 189715-45-000

WINNEBAGO - R45RL
SW4 - DINETTE

1	LOUNGE	GALLEY	2
3	FRONT TRAY	SLIDE CEILING	4
S4-8	DIS SHADE	DINETTE O/H/D	20

Firefly P/N: 90155
Winnebago P/N: 189715-37-000

WINNEBAGO - R45RL
SW6 - REAR BATH

15	WATER PUMP	SHOWER	13
30	WATER PUMP	ASLE	14
45	WATER PUMP	WATER PUMP	18
46	WATER PUMP	WATER PUMP	7
23	WATER PUMP	WATER PUMP	26, 27

Firefly P/N: 90251
Winnebago P/N: 189715-38-000

WINNEBAGO - R45RL
SW7 - BED O/H/D

5	LEFT O/H/D	RIGHT O/H/D	6
7	BEDROOM	BEDROOM TRAY	8
58	BEDROOM	BED LIFT	49
59	BEDROOM	GEN	50
S14,15,16	BEDROOM SHADES	ALL DOORS	47
16	PANEL LIGHTS	LIGHT MASTER	48

Firefly P/N: 90302
Winnebago P/N: 189715-40-000

WINNEBAGO - R45RL
SW8 - BEDROOM

49	BED LIFT	BEDROOM	7
50	ACCENT	BEDROOM TRAY	8
12	DRESSER O/H/D		58
21	BEDROOM SHADES	ALL DOORS	59
S14,15,16	BEDROOM SHADES	ALL DOORS	51,53
16	PANEL LIGHTS	LIGHT MASTER	52,54

Firefly P/N: 90356
Winnebago P/N: 189715-41-000

WINNEBAGO - R45RL
SW10 - GALLEY

1	LOUNGE	GALLEY	2
3	FRONT TRAY	GALLEY O/H/D	10
9	HALLWAY	SLIDE CEILING	4
11	ACCENT	ASLE	18
43		ALL FRIT SHADES	S1-12
44			

Firefly P/N: 90452
Winnebago P/N: 189715-42-000

WINNEBAGO - R45RL
SW11 - LOUNGE

1	LOUNGE	SOFA O/H/D	22
3	FRONT TRAY	SLIDE CEILING	4
11	ACCENT	ASLE	18
S4-8	DIS SHADES	TV LIFT	31
S9-12	DIS SHADES	ALL FRIT SHADES	S1-12

Firefly P/N: 90506
Winnebago P/N: 189715-43-000

WINNEBAGO - R45RL
SW12 - BAY

26	SERVICE BAY DOORS	53	
25	CONPAT	JACKS	37
30	WATER PUMP	GEN	47
	PANEL LIGHTS	FRIT MASTER	48
	FRESH GRAY BAY LUG		

Firefly P/N: 90554
Winnebago P/N: 189715-46-000

265 CODES/STANDARDS-CSA/CMVSS

1B1 CODES/STANDARDS USA

FOR ELECTRICAL TORQUE SPECIFICATIONS SEE DWG NO. 128783-01-000

FOR ELECTRICAL CALLOUTS SEE DWG NO. 121339-01-000

1B1	265	
DESCRIPTION:		
WIRING INSTL-BODY, 12V		
SHEET:	ITEM/PART NO:	REV
9 OF 9	000210493 / 30237901000	