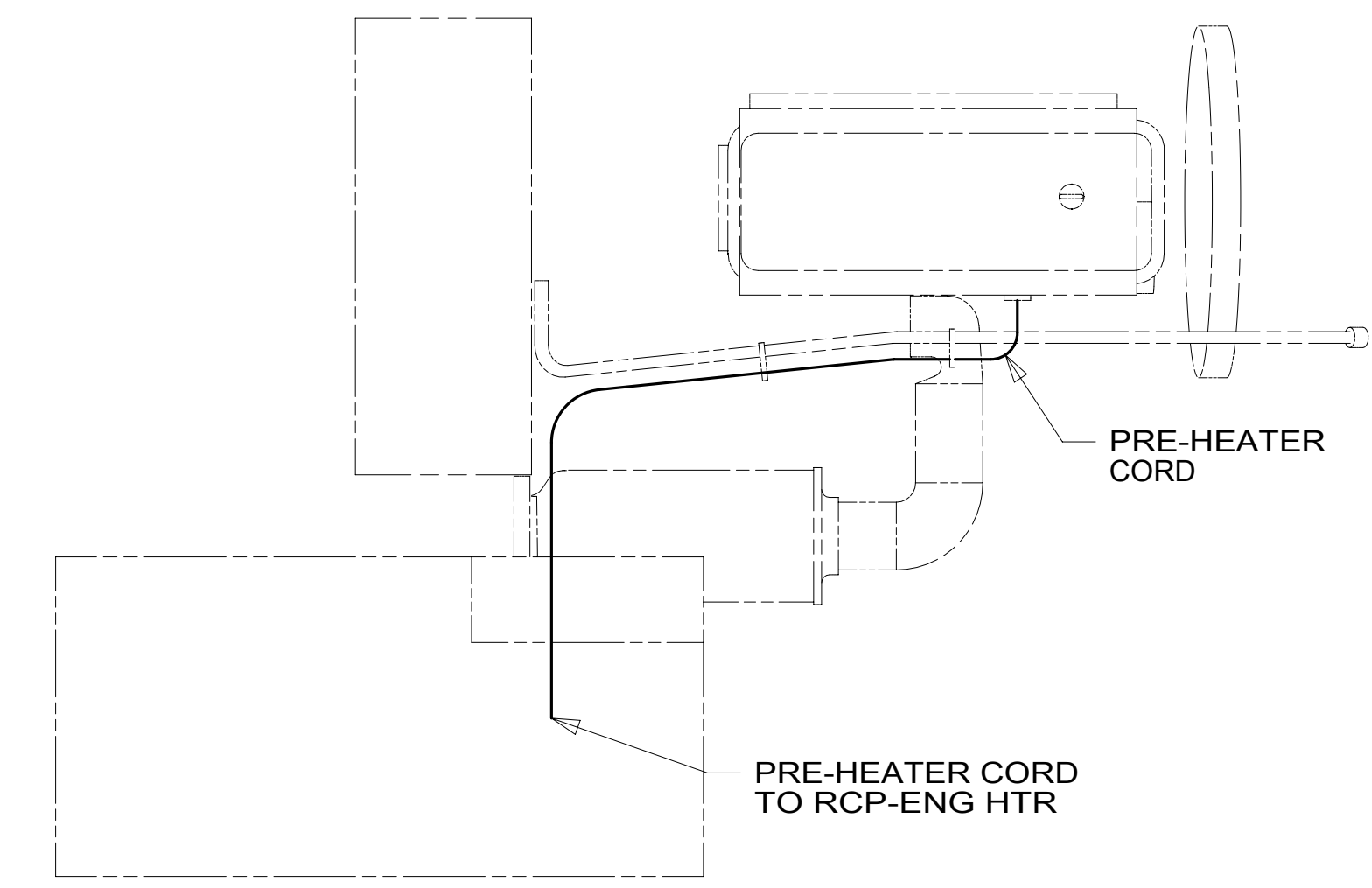


- NOTES:
- 8 SEE BATTERY INSTL FOR ADDITIONAL INFORMATION
 - 7 REST WIRE IN FRAME RAIL WHEN APPLICABLE.
 - 6 CLAMP 83610-01-000, SCREW G39-08-12U
 - 5 CLAMP 10497-03-000, SCREW G39-08-12U
 - 4 USE TIE-WIRE 8343-04-000 TO SECURE WIRES TO FLOOR SUPPORT FRAME AT LEAST ONCE EVERY 600MM.
 - 3 SECURE CORD AWAY FROM ALL MOVING PARTS AND EXHAUST WITH WIRE-TIE 93147-01-000 AS REQUIRED
 - 2 SEE WIRING INSTL-FRONT END FOR ADDITIONAL INFORMATION.
 - 1 SEE SHEET 5 FOR ADDITIONAL INFORMATION.



- 282 SOLAR PANEL - 100 WATT
- 265 CODES/STANDARDS-CSA/CMVSS
- 1B1 CODES/STANDARDS USA

WINNEBAGO COPYRIGHT 2016 WINNEBAGO INDUSTRIES, INC.	
DSNR:	ALL DIMENSIONS ARE IN MILLIMETERS
DFFR:	
UNSPECIFIED TOLERANCES:	MATERIAL:
WHOLE DIM (X) :	3 X
ONE-PLACE (X.X) :	1.5 X
TWO-PLACE (X.XX) :	0.50 X
ANGLE :	1° X
REFER TO ES0018 FOR FASTENER TIGHTENING GUIDELINES	WEIGHT: (LBS) FIRST USED:
	X
DESCRIPTION: WIRING INSTL-CHASSIS	
SHEET: 1 OF 4	ITEM/PART NO: 000210450 / 30211301000
REF:	REV

FOR ELECTRICAL TORQUE SPECIFICATIONS SEE DWG NO. 128783-01-000

FOR ELECTRICAL CALLOUTS SEE DWG NO. 121339-01-000

8 7 6 5 4 3 2 1

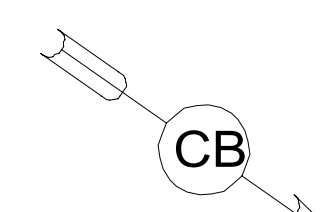
D
C
B
A

RELAY
063912-02-000

PANEL-CLOSEOUT
175347-08-CHT
SCREW
G11-08-12U (4)

CIRCUIT BREAKERS
DETAIL CA

PANEL-CLOSEOUT,
ELECTRICAL
175347-02-CHT (2)
SCREW
G39-10-12U (4)



CC

CHASSIS
BATTERIES
(REF)

FUSE BLOCK
(CHASSIS SUPPLIED)
(REF)

FREIGHTLINER
STARTER CABLE

VIEW BA

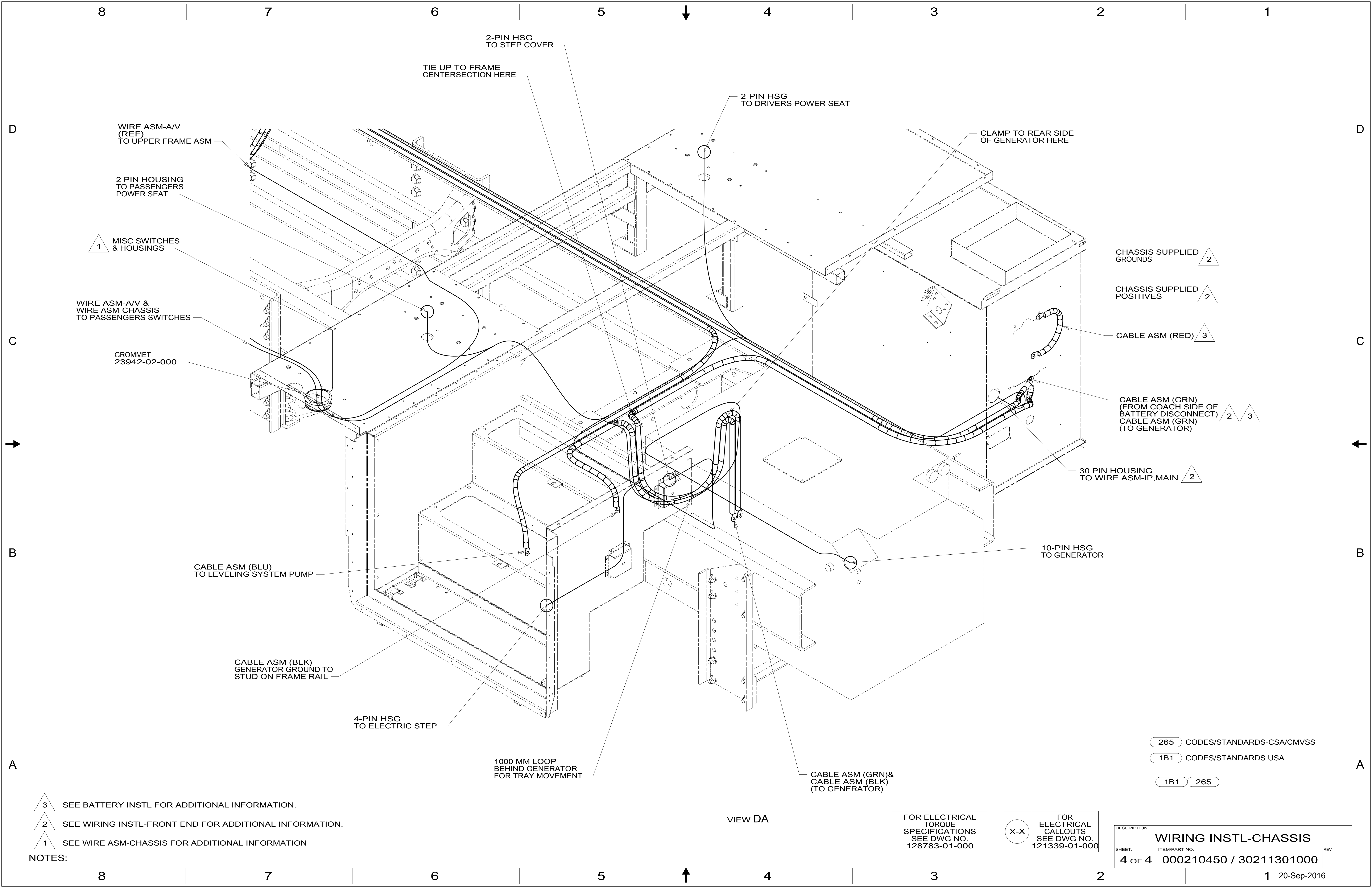
FOR ELECTRICAL
TORQUE
SPECIFICATIONS
SEE DWG NO.
128783-01-000

FOR
ELECTRICAL
CALLOUTS
SEE DWG NO.
121339-01-000

265 CODES/STANDARDS-CSA/CMVSS
1B1 CODES/STANDARDS USA

DESCRIPTION:		1B1	265
WIRING INSTL-CHASSIS			
SHEET:	ITEM/PART NO.:	REV	
2 OF 4	000210450 / 30211301000		

8 7 6 5 4 3 2 1 20-Sep-2016



WIRE ASM-A/V (REF) TO UPPER FRAME ASM

2 PIN HOUSING TO PASSENGERS POWER SEAT

1 MISC SWITCHES & HOUSINGS

WIRE ASM-A/V & WIRE ASM-CHASSIS TO PASSENGERS SWITCHES

GROMMET 23942-02-000

CABLE ASM (BLU) TO LEVELING SYSTEM PUMP

CABLE ASM (BLK) GENERATOR GROUND TO STUD ON FRAME RAIL

4-PIN HSG TO ELECTRIC STEP

1000 MM LOOP BEHIND GENERATOR FOR TRAY MOVEMENT

2-PIN HSG TO STEP COVER

TIE UP TO FRAME CENTERSECTION HERE

2-PIN HSG TO DRIVERS POWER SEAT

CLAMP TO REAR SIDE OF GENERATOR HERE

CHASSIS SUPPLIED GROUNDS 2

CHASSIS SUPPLIED POSITIVES 2

CABLE ASM (RED) 3

CABLE ASM (GRN) (FROM COACH SIDE OF BATTERY DISCONNECT) CABLE ASM (GRN) (TO GENERATOR) 2 3

30 PIN HOUSING TO WIRE ASM-IP,MAIN 2

10-PIN HSG TO GENERATOR

CABLE ASM (GRN) & CABLE ASM (BLK) (TO GENERATOR)

- NOTES:
- 3 SEE BATTERY INSTL FOR ADDITIONAL INFORMATION.
 - 2 SEE WIRING INSTL-FRONT END FOR ADDITIONAL INFORMATION.
 - 1 SEE WIRE ASM-CHASSIS FOR ADDITIONAL INFORMATION

VIEW DA

FOR ELECTRICAL TORQUE SPECIFICATIONS SEE DWG NO. 128783-01-000

FOR ELECTRICAL CALLOUTS SEE DWG NO. 121339-01-000

265	CODES/STANDARDS-CSA/CMVSS
1B1	CODES/STANDARDS USA
1B1	265

DESCRIPTION: WIRING INSTL-CHASSIS		
SHEET: 4 OF 4	ITEM/PART NO: 000210450 / 30211301000	REV
		1 20-Sep-2016