

1 CABLE ASM (BLK) GENERATOR GROUND

4 PIN HOUSING TO ELECTRIC STEP

2 PIN HOUSING TO STEP COVER

10 PIN HOUSING TO GENERATOR

(2) 2-PIN HOUSINGS TO FOG LAMPS

CABLE ASM (GRN) FROM GENERATOR AND CABLE ASM (GRN) FROM COACH DISCONNECT

DATUM FRONT AXLE

30 PIN HOUSING TO WIRE ASM-IP, MAIN

CABLES TO ISOLATED STUDS

CABLE ASM (BLU) 1

TO PASSENGER SWITCHES

CABLE ASM 188087-01-012

TO PASSENGER SEAT GROMMET 71015-20-000

2 PIN HOUSING TO COOLING FAN

WIRE ASM-A/V TO MAIN TV (BRN) 5

WIRE ASM-A/V 181769-06-000

WIRES ROUTE THROUGH FLOOR IN THIS AREA

BATTERY INSTL 191913-03-000

WIRE ASM-A/V TO EXTERIOR TV (COIL ABOVE FLOOR)

CABLE ASM-INVERTER NEGATIVE (BLK) 1

CABLE ASM-INVERTER (ORG) 1

WIRE ASM-A/V TO BEDROOM TV (COIL ABOVE FLOOR)

CABLE ASM (YEL) COACH BATTERY 1

WIRE ASM-CHASSIS 000006504 / 310373-01-000 7

ZZD TO BATTERY GROUND POST (SOLAR PANEL GROUND) 282

CABLE ASM (BLU) FROM ISOLATED STUD TO LEVELING SYSTEM PUMP

CABLE ASM (GRN) FROM COACH DISCONNECT TO PASS THROUGH STUD

MISC HSG TO WIRE ASM-COACH

MP, JT TO LP TANK

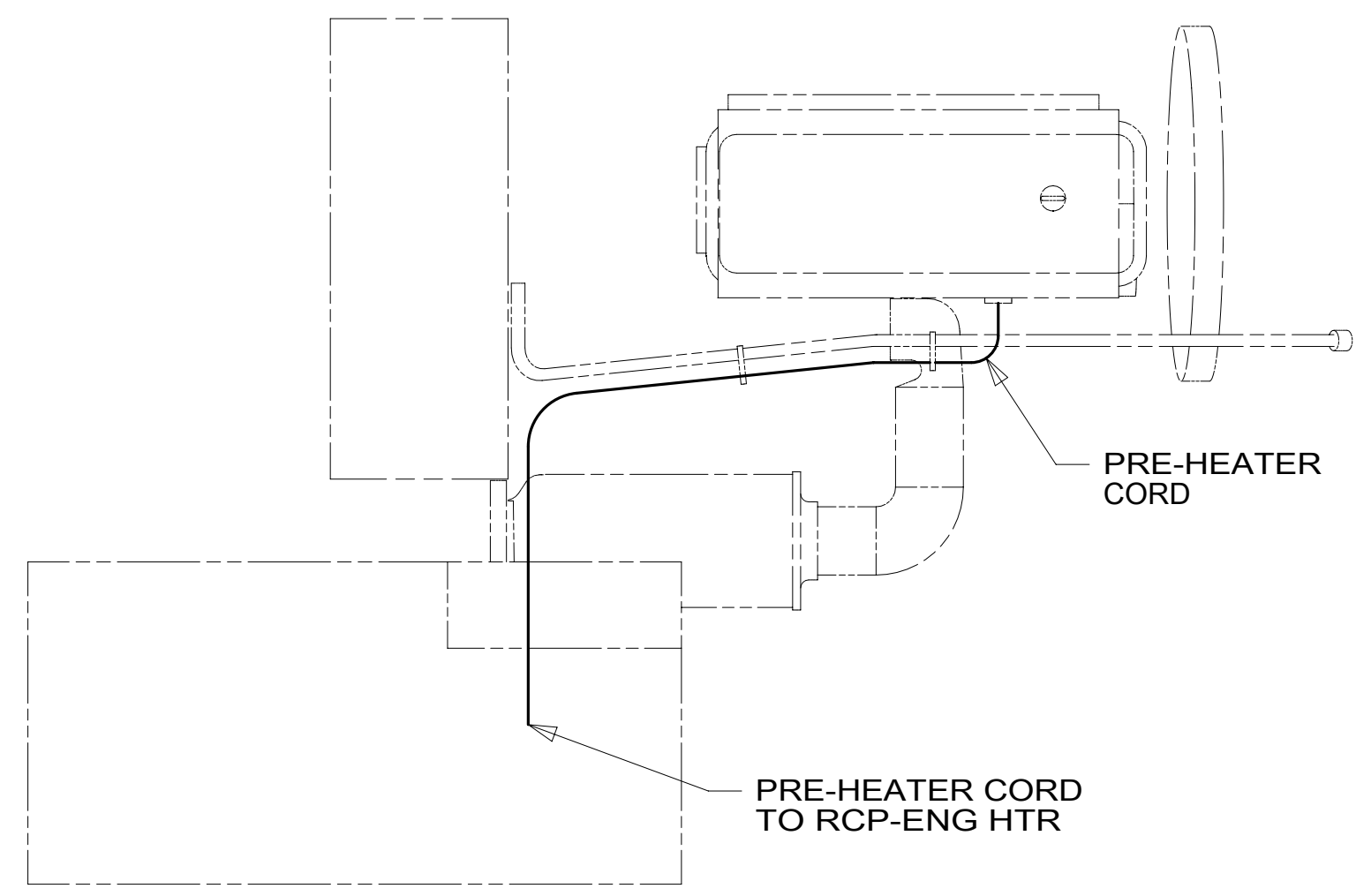
TO DRIVER SEAT GROMMET 71015-20-000

CABLE ASM (BLK) COACH GROUND

DETAIL AA

2 PIN HSG TO WIRE ASM-BACKWALL

- NOTES:
- 7 REST WIRE IN FRAME RAIL WHEN APPLICABLE.
 - 6 CLAMP 83610-01-000, SCREW G39-08-12B
 - 5 CLAMP 10497-03-000, SCREW G39-08-12B
 - 4 USE TIE-WIRE 8343-04-000 TO SECURE WIRES TO FLOOR SUPPORT FRAME AT LEAST ONCE EVERY 600MM.
 - 3 SECURE CORD AWAY FROM ALL MOVING PARTS AND EXHAUST WITH WIRE-TIE 93147-01-000 AS REQUIRED
 - 2 SEE WIRING INSTL-FRONT END FOR ADDITIONAL INFORMATION.
 - 1 SEE BATTERY INSTL FOR ADDITIONAL INFORMATION



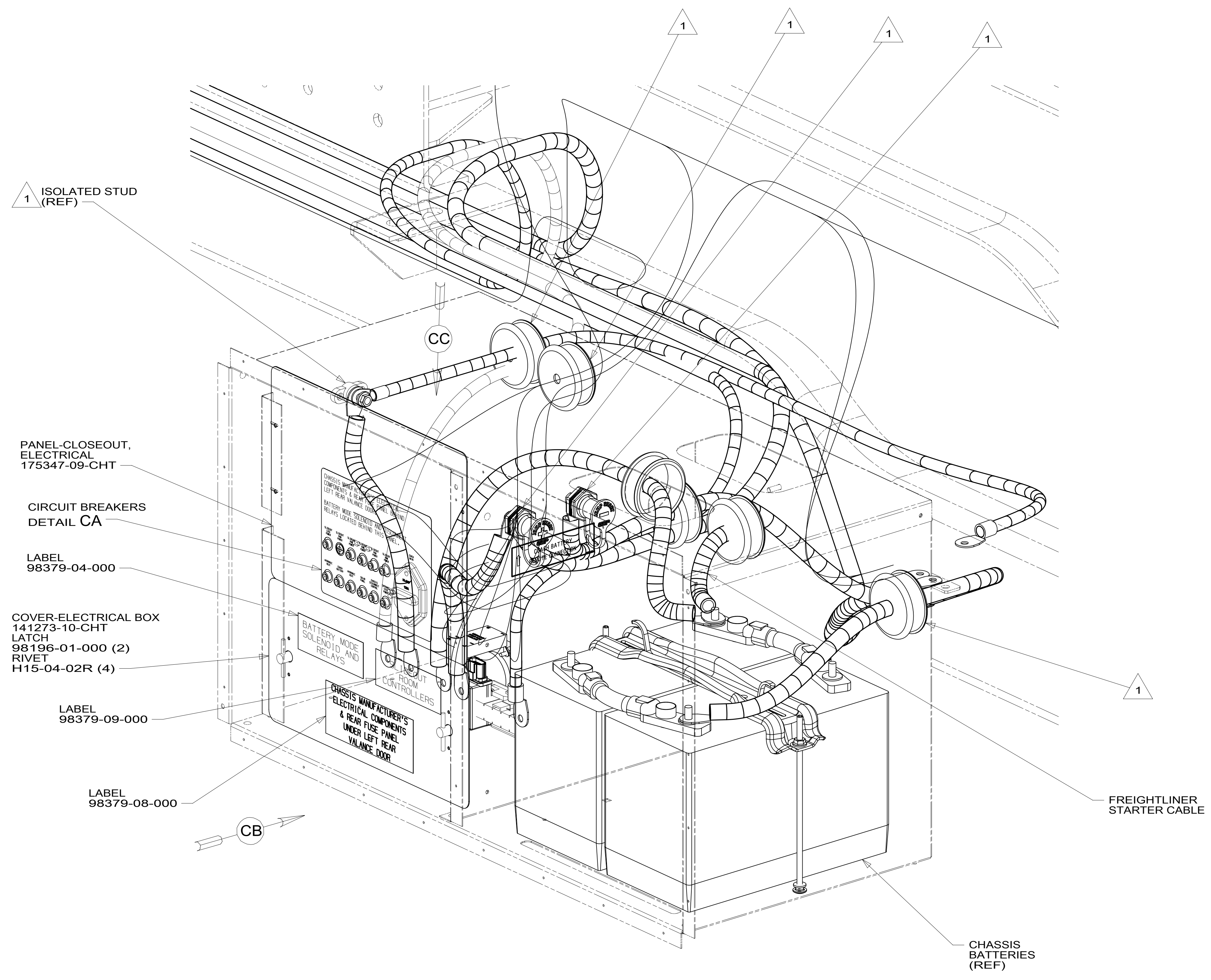
DETAIL AA 3

FOR ELECTRICAL TORQUE SPECIFICATIONS SEE DWG NO. 128783-01-000

FOR ELECTRICAL CALLOUTS SEE DWG NO. 121339-01-000

- 282 SOLAR PANEL - 100 WATT
- 1LE FRTL 44,320 400HP 6SPD TAG
- 265 CODES/STANDARDS-CSA/CMVSS
- 1B1 CODES/STANDARDS USA

WINNEBAGO COPYRIGHT 2016 WINNEBAGO INDUSTRIES, INC.		ALL DIMENSIONS ARE IN MILLIMETERS
DSNR:		
DFFR:		MATERIAL:
UNSPECIFIED TOLERANCES:		
WHOLE DIM (X) :	3	
ONE-PLACE (X.X) :	1.5	
TWO-PLACE (X.XX) :	0.50	WEIGHT: (LBS) FIRST USED:
ANGLE :	1°	
REFER TO ES0018 FOR FASTENER TIGHTENING GUIDELINES		16 P42E
DESCRIPTION:		
WIRING INSTL-CHASSIS		
SHEET:	ITEM/PART NO.:	REV:
1 OF 5	000210443 / 30209301000	
REF:		1 20-Sep-2016



VIEW BA

1 SEE BATTERY INSTL FOR ADDITIONAL INFORMATION.

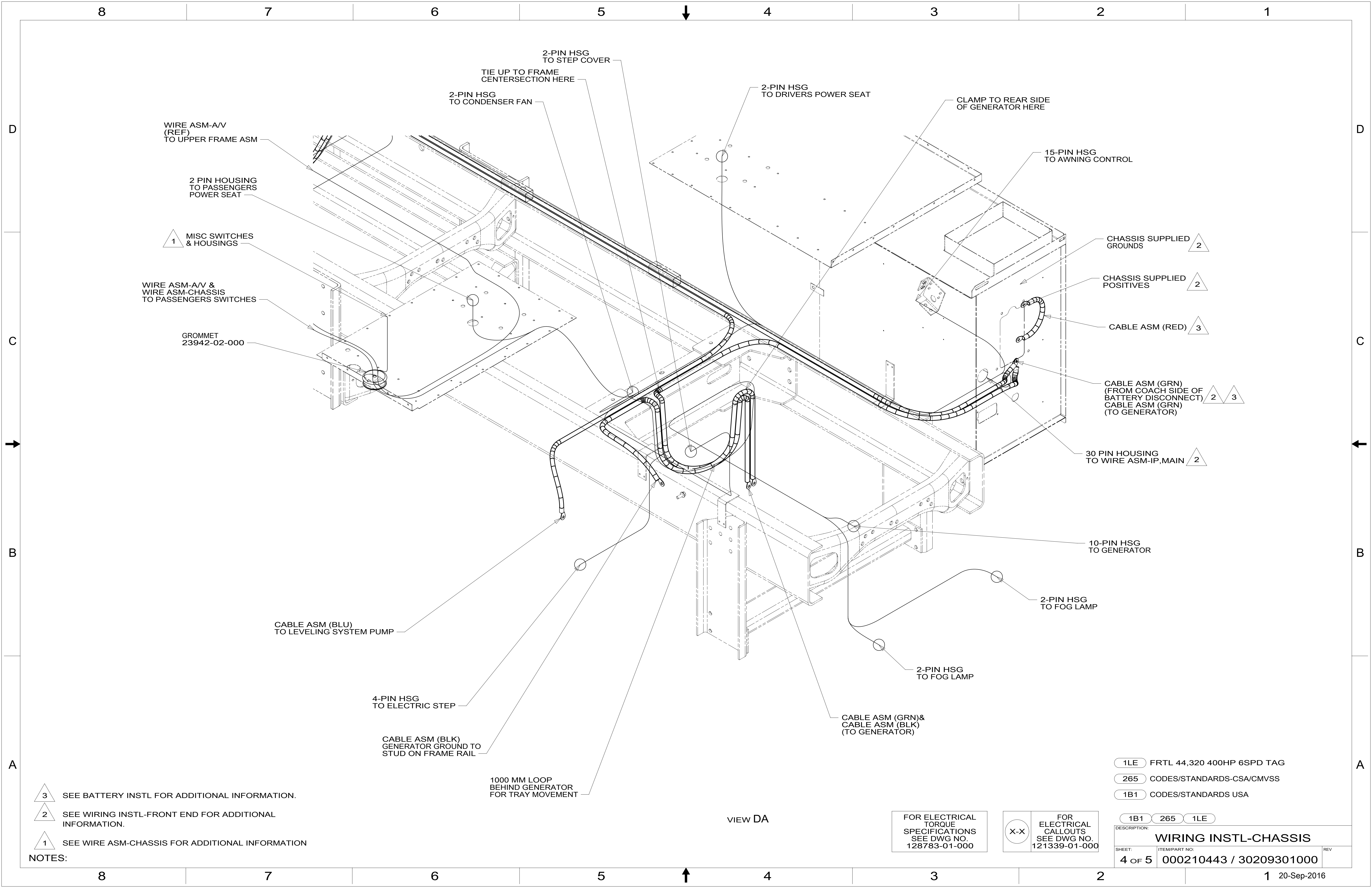
NOTES:

FOR ELECTRICAL TORQUE SPECIFICATIONS SEE DWG NO. 128783-01-000

FOR ELECTRICAL CALLOUTS SEE DWG NO. 121339-01-000

- 1LE FRTL 44,320 400HP 6SPD TAG
- 265 CODES/STANDARDS-CSA/CMVSS
- 1B1 CODES/STANDARDS USA

DESCRIPTION:		
WIRING INSTL-CHASSIS		
SHEET:	ITEM/PART NO.:	REV:
2 OF 5	000210443 / 30209301000	



- NOTES:
- 3 SEE BATTERY INSTL FOR ADDITIONAL INFORMATION.
 - 2 SEE WIRING INSTL-FRONT END FOR ADDITIONAL INFORMATION.
 - 1 SEE WIRE ASM-CHASSIS FOR ADDITIONAL INFORMATION

- 1LE FRTL 44,320 400HP 6SPD TAG
- 265 CODES/STANDARDS-CSA/CMVSS
- 1B1 CODES/STANDARDS USA

FOR ELECTRICAL TORQUE SPECIFICATIONS SEE DWG NO. 128783-01-000

FOR ELECTRICAL CALLOUTS SEE DWG NO. 121339-01-000

DESCRIPTION:		
WIRING INSTL-CHASSIS		
SHEET:	ITEM/PART NO.:	REV:
4 OF 5	000210443 / 30209301000	

VIEW DA