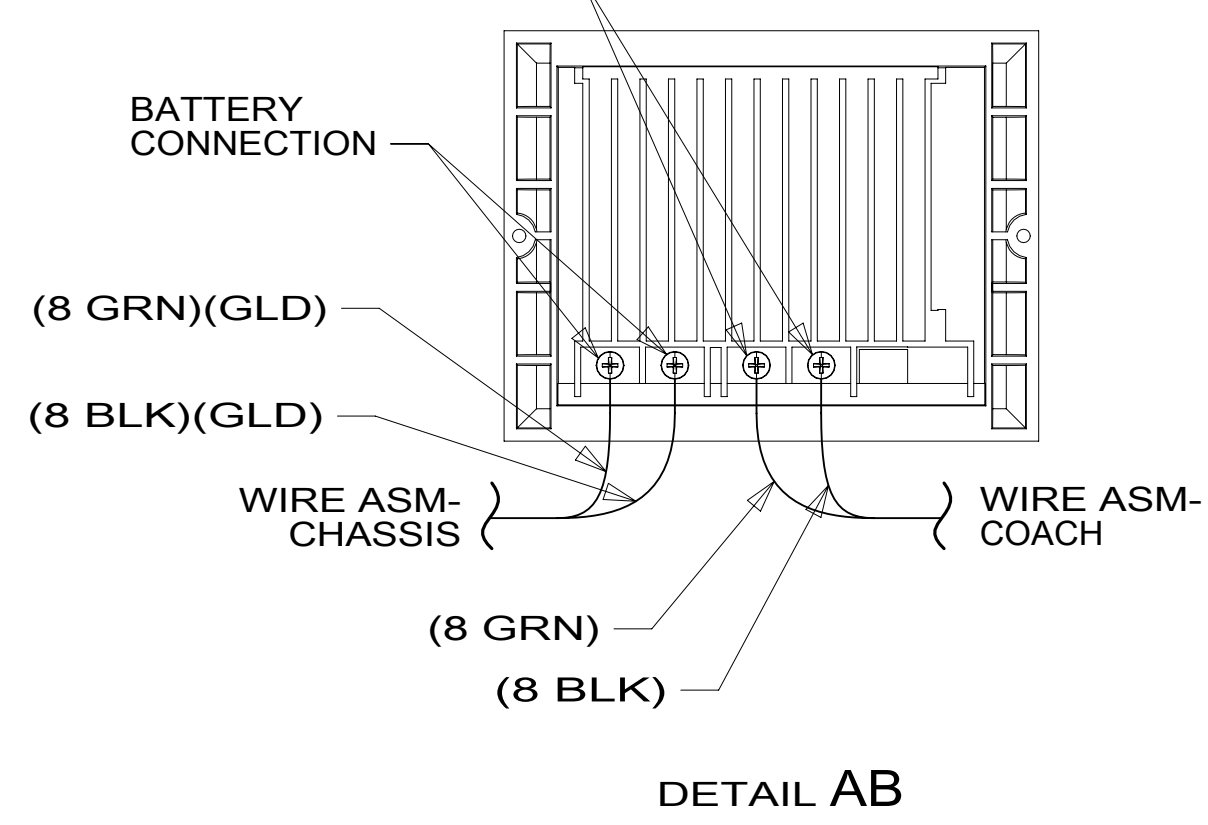


- 4 ADD CONDUIT TO COVER CAPILLARY TUBE COMPLETELY. CLAMP OR WIRE TIE TO FRAME TUBES.
- 3 WIRE PASSES UP THRU FLOOR IN THIS AREA.
2. ROUTE TANK SENSOR WIRES SO THEY DO NOT PASS OVER SENSORS. USE WIRE TIE MOUNT 155366-01-000 AND WIRE TIE 8343-01-000 AS NEEDED. TANK SURFACE MUST BE CLEANED USING ISOPROPYL ALCOHOL AND PRIMED WITH PRIMER 94.
1. AT MINIMUM ALL WIRES TO BE SUPPORTED AND SECURED PER CODE REQUIREMENTS. USE CLAMP 10495 OR 10497 OR WIRE TIE 8343 OR 108046 AND SCREW G67-XX-XXX OR G56-XX-XXX AS APPROPRIATE FOR INSTALLATION.

NOTES:



FOR ELECTRICAL TORQUE SPECIFICATIONS SEE DWG NO. 128783-01-000

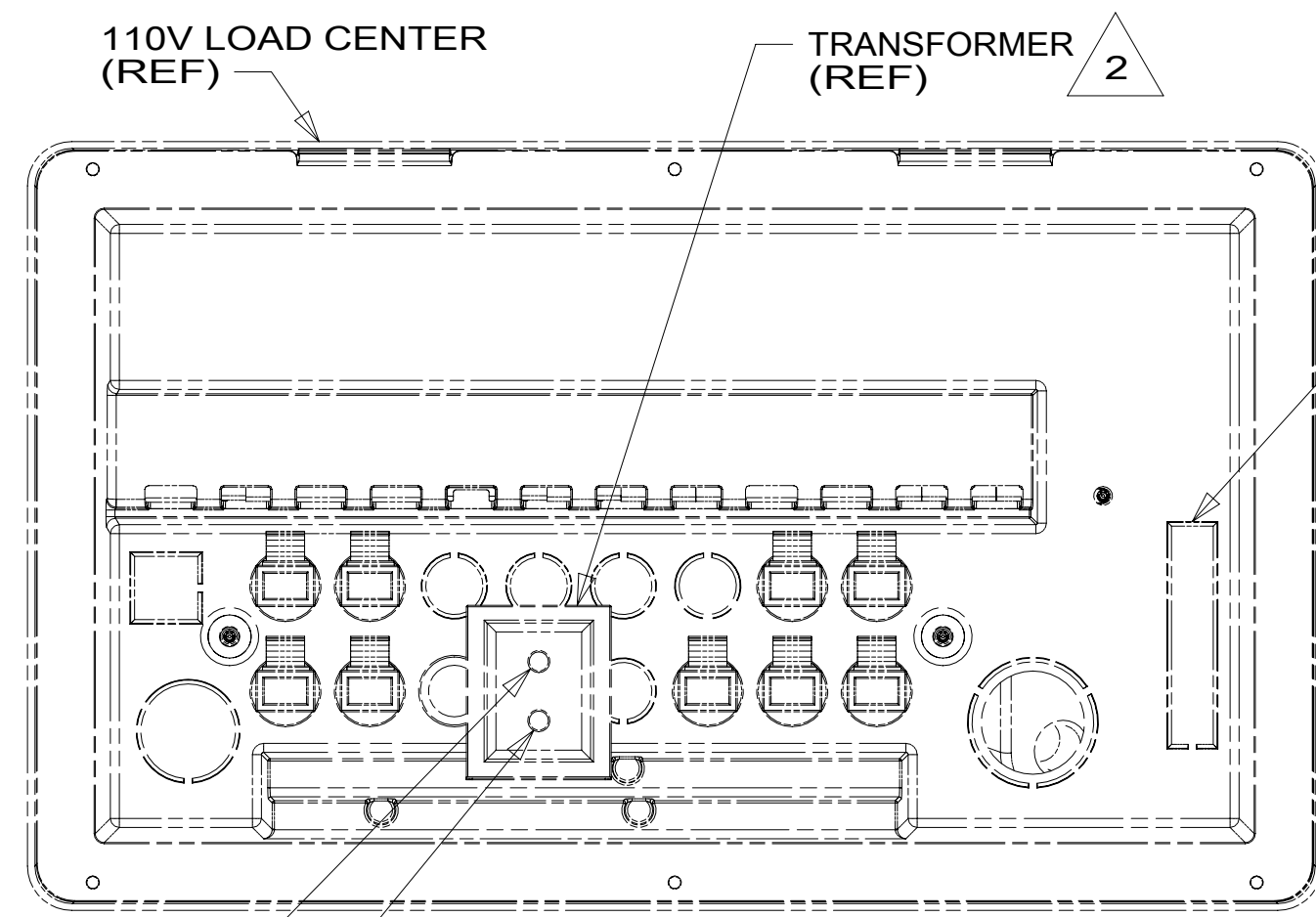
FOR ELECTRICAL CALLOUTS SEE DWG NO. 121339-01-000

- 11E REFRIGERATOR/FREEZER PORTABL
- 265 CODES/STANDARDS-CSA/CMVSS
- 1B1 CODES/STANDARDS USA

1B1 265

WINNEBAGO
COPYRIGHT 2016 WINNEBAGO INDUSTRIES, INC.

| | |
|--|--|
| DSNR: | ALL DIMENSIONS ARE IN MILLIMETERS |
| DIFFR: | MATERIAL: |
| UNSPECIFIED TOLERANCES: | |
| WHOLE DIM (X) : | 3 |
| ONE-PLACE (X.X) : | 1.5 |
| TWO-PLACE (X.XX) : | 0.50 |
| ANGLE : | 1° |
| REFER TO ES0018 FOR FASTENER TIGHTENING GUIDELINES | WEIGHT: (LBS) FIRST USED: 16 P42E |
| DESCRIPTION: WIRING INSTL-BODY, 12V | |
| SHEET: 1 OF 11 | ITEM/PART NO.: 000210442 / 30209201000 |
| REF: 1 | 20-Sep-2016 |



VIEW BC

SSG
SSH

WIRE ASM-COACH
REMOVE KNOCKOUT
DETAIL BD

WIRE ASM-OVHD
193397-02-000

TEMP SENSOR
171186-02-CHT
SCREW
G67-06-10T (2)
(CONNECTS TO
CIRCUITS WWU & WWT)

MAIN 12V DROP TO
WIRE ASM-ROOF
DETAIL FB

RELAY
63912-02-000 (3)
SCREW
G12-08-12U (3)

LIGHT-MAKE UP,3 BULB
190703-01-CHT (2)
CONNECTOR
58028-01-000 (4)

PSLED-2
2

WIRE ASM-OVHD
193397-03-000

3 PIN HSG
TO SLIDEOUT
WIRE ASM-SIDEWALL

LIGHT-MAKE UP,3 BULB
190703-01-CHT
CONNECTOR
58028-01-000 (2)

SUB POS AND SUB NEG
TO SUBWOOFER

SUB SUPPLIED WITH
HOME THEATER
BRACE
172938-01-CHT (2)
SCREW
G39-08-12U (8)

6-PIN HSG
TO SIDEWALL

RELAY
063912-02-000 (7)
(BEHIND ONE-PLACE
PANEL)

2 PIN HSG
TO SIDEWALL
SERVICE LAMP

LIGHT-COURTESY
108354-01-CHT

DETECTOR-LP GAS
150138-03-CHT

WIRE ASM-RESISTOR
173852-01-000
(INSTALL IN-LINE WITH
BATT. HEATER FAN)

12V WIRES TO
CONTROLS IN 110V
LOAD CENTER
DETAIL BC

WIRE ASM-COACH
TO RIGHT SIDE

2-PIN HSG
TO SOFA

REMOTE

MAGNUM INVERTER

12VDC

12-PIN
HOUSING

WIRE ASM-
COACH

DATA CABLE
(NO TAPE)

DATA CABLE
(GREEN TAPE)

DETAIL BD

2 SEE LOAD CENTER/ATS ASM FOR ADDITIONAL INFORMATION.

1. AT MINIMUM ALL WIRES TO BE SUPPORTED AND SECURED PER CODE REQUIREMENTS. USE CLAMP 10495 OR 10497 OR WIRE TIE 8343 OR 108046 AND SCREW G67-XX-XXX OR G56-XX-XXX AS APPROPRIATE FOR INSTALLATION.

NOTES:

- 1BT WATER HEATER, TANKLESS
- 265 CODES/STANDARDS-CSA/CMVSS
- 1B1 CODES/STANDARDS USA

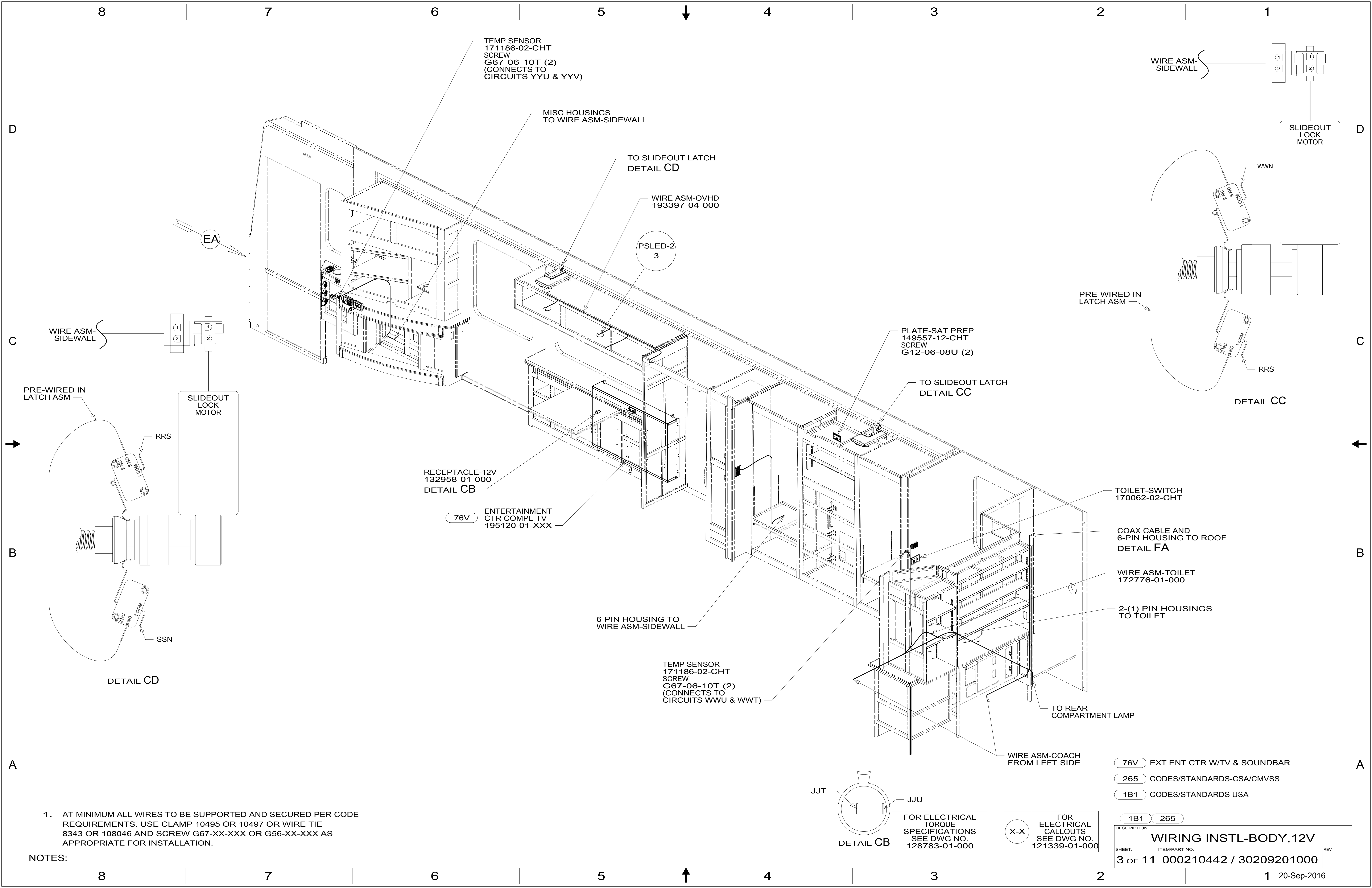
FOR ELECTRICAL
TORQUE
SPECIFICATIONS
SEE DWG NO.
128783-01-000

FOR
ELECTRICAL
CALLOUTS
SEE DWG NO.
121339-01-000

1B1 265

DESCRIPTION:
WIRING INSTL-BODY, 12V

SHEET: 2 OF 11 ITEM/PART NO: 000210442 / 30209201000 REV



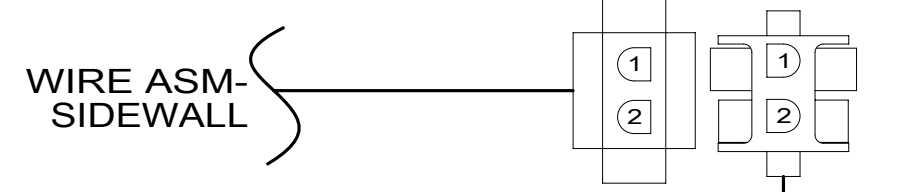
TEMP SENSOR
171186-02-CHT
SCREW
G67-06-10T (2)
(CONNECTS TO
CIRCUITS YYU & YYV)

MISC HOUSINGS
TO WIRE ASM-SIDEWALL

TO SLIDEOUT LATCH
DETAIL CD

WIRE ASM-OVHD
193397-04-000

PSLED-2
3



SLIDEOUT
LOCK
MOTOR

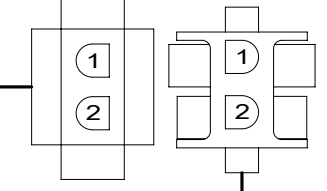
WWN

PRE-WIRED IN
LATCH ASM

RRS

DETAIL CC

WIRE ASM-
SIDEWALL



SLIDEOUT
LOCK
MOTOR

RRS

PRE-WIRED IN
LATCH ASM

SSN

DETAIL CD

RECEPTACLE-12V
132958-01-000
DETAIL CB

76V

ENTERTAINMENT
CTR COMPL-TV
195120-01-XXX

PLATE-SAT PREP
149557-12-CHT
SCREW
G12-06-08U (2)

TO SLIDEOUT LATCH
DETAIL CC

TOILET-SWITCH
170062-02-CHT

COAX CABLE AND
6-PIN HOUSING TO ROOF
DETAIL FA

WIRE ASM-TOILET
172776-01-000

2-(1) PIN HOUSINGS
TO TOILET

6-PIN HOUSING TO
WIRE ASM-SIDEWALL

TEMP SENSOR
171186-02-CHT
SCREW
G67-06-10T (2)
(CONNECTS TO
CIRCUITS WWU & WWT)

TO REAR
COMPARTMENT LAMP

WIRE ASM-COACH
FROM LEFT SIDE

76V EXT ENT CTR W/TV & SOUNDBAR

265 CODES/STANDARDS-CSA/CMVSS

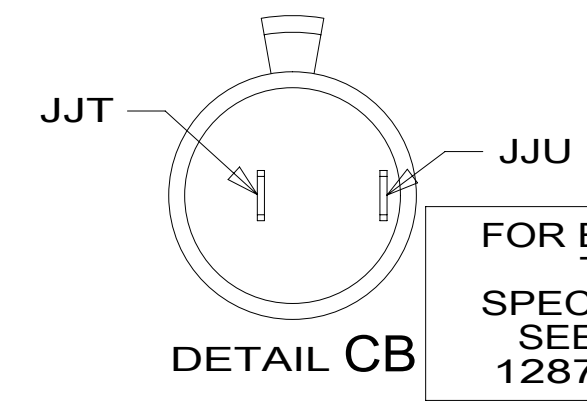
1B1 CODES/STANDARDS USA

1B1 265

DESCRIPTION:
WIRING INSTL-BODY, 12V

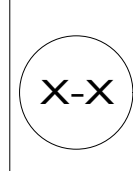
SHEET: 3 OF 11 ITEM/PART NO: 000210442 / 30209201000 REV

NOTES:
1. AT MINIMUM ALL WIRES TO BE SUPPORTED AND SECURED PER CODE REQUIREMENTS. USE CLAMP 10495 OR 10497 OR WIRE TIE 8343 OR 108046 AND SCREW G67-XX-XXX OR G56-XX-XXX AS APPROPRIATE FOR INSTALLATION.



DETAIL CB

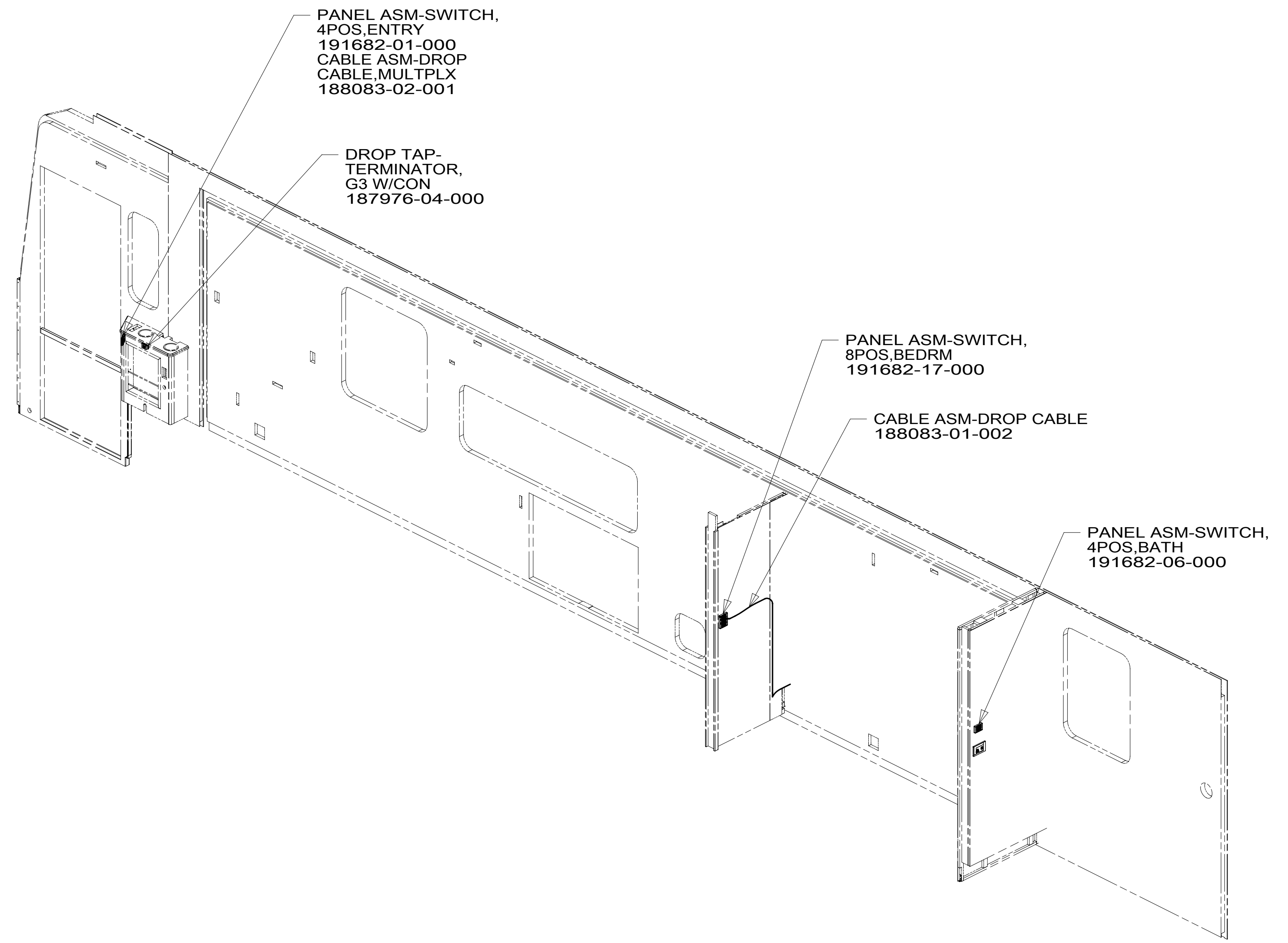
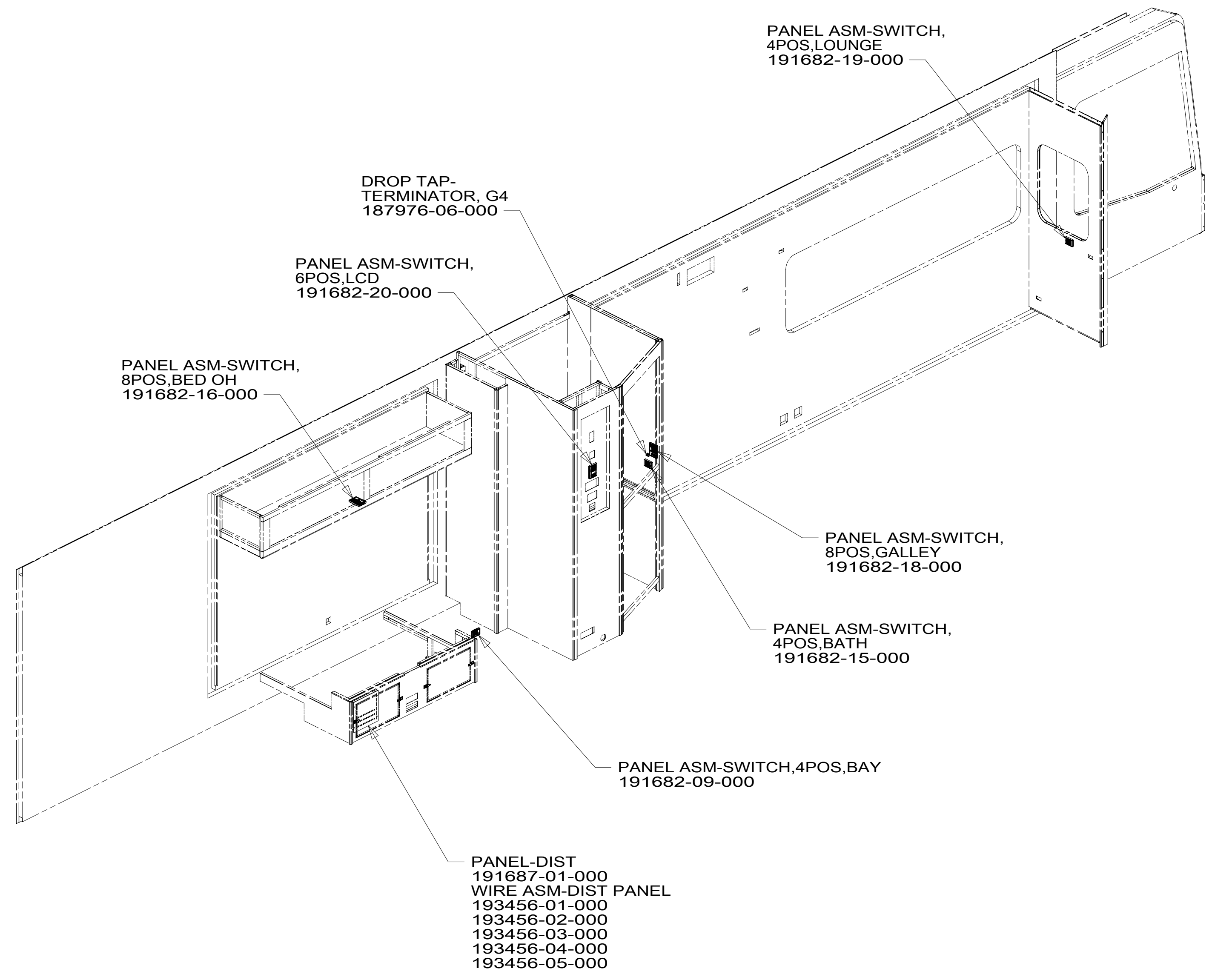
FOR ELECTRICAL
TORQUE
SPECIFICATIONS
SEE DWG NO.
128783-01-000



FOR ELECTRICAL
CALLOUTS
SEE DWG NO.
121339-01-000

8 7 6 5 4 3 2 1

D
C
B
A



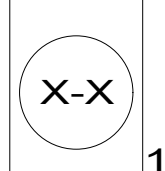
8 7 6 5 4 3 2 1

D
C
B
A

- 265 CODES/STANDARDS-CSA/CMVSS
- 1B1 CODES/STANDARDS USA

FOR ELECTRICAL TORQUE SPECIFICATIONS SEE DWG NO. 128783-01-000

FOR ELECTRICAL CALLOUTS SEE DWG NO. 121339-01-000



| | |
|-------------------------------|-------------------------|
| DESCRIPTION: | |
| WIRING INSTL-BODY, 12V | |
| SHEET: | ITEM/PART NO.: |
| 4 OF 11 | 000210442 / 30209201000 |
| REV | |

D

C

B

A

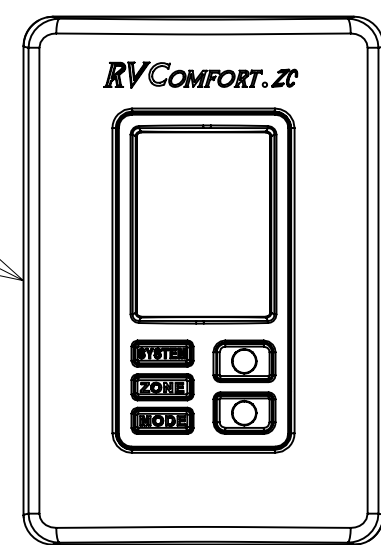
D

C

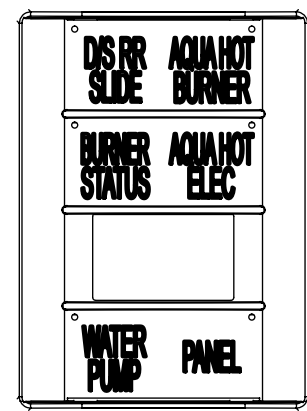
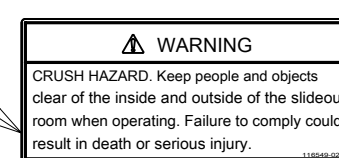
B

A

THERMOSTAT-ZONE,2-STAGE
171186-05-CHT
SCREW
G11-08-08U (2)
RELAY
63912-02-000 (2)

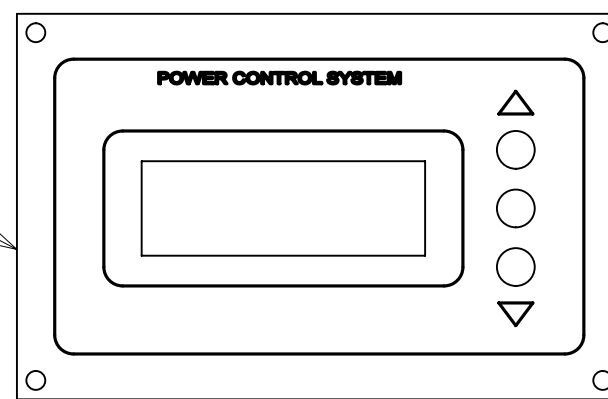


LABEL
116549-02-000

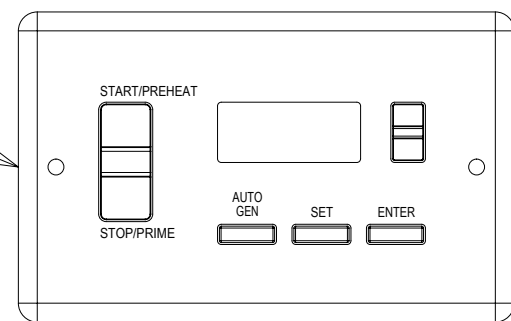


MULTIPLEX SWITCH
(REF)

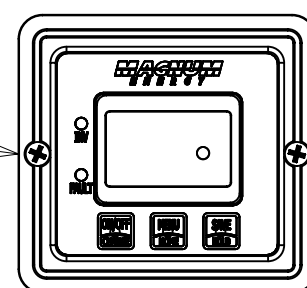
MONITOR-PANEL EMS
174384-06-000
SCREW
G11-08-08U (4)



2 MODULE-AUTO
GENERATOR START
158425-01-000
SCREW
G11-08-08U (2)



1 REMOTE PANEL
175385-02-000
SCREW
G11-08-08U (2)



DETAIL EL

SWITCH-STEP COVER
174757-08-CHT
(CIRCUITS GX,HHC,
KA,KA,HHD,GX,MC,ML)

PANEL-SWITCH MOUNTING,SINGLE
174834-01-CHT (2)

SWITCH-ENTRY DOOR LOCK
174757-02-CHT
(CIRCUITS PY,MK,PX,MC,ML)

PLATE-SWITCH
176859-10-CHT
SCREW
G67-10-12U (4)

MULTIPLEX SWITCH
(REF)

PLATE-SWITCH
191990-01-CHT
SCREW
G67-10-12U (6)

PANEL-SWITCH,3-WAY
174834-02-CHT (3)

SWITCH-AWNING POWER
174757-19-CHT
(CIRCUITS FFD,FFT,MC,FFT,ML)

SWITCH-DOOR AWNING
174757-09-CHT
(CIRCUITS FFS,FFF,FFE,
FFE,FFG,FFT,MC,ML)

SWITCH-AWNING WIND SENSOR
174757-18-CHT
(CIRCUITS UUK,UUL,UUM,MC,ML)

SWITCH-CHASS BATT DISC
174757-06-CHT
(CIRCUITS UUC,TTY,
UUB,TTZ,UUC,MK)
WIRE ASM-THERM
186796-01-000

SWITCH-ENTRY STEP
174757-27-CHT
(CIRCUITS ES,ER,MC,ML)

KEYLESS ENTRY MODULE
176367-04-000
SCREW
G11-08-08U (2)

RECEPTACLE-12V
132958-01-000
DETAIL CB

AWNING CONTROL BOX
166642-02-CHT
SCREW
G39-08-12U (2)

RELAY-LIGHTING/AWNING
063912-02-000 (2)

SWITCH-PATIO AWNING
174757-03-CHT
(CIRCUITS FFN,FFP,FFR,MC,ML)

SWITCH-BLANK
145754-01-CHT

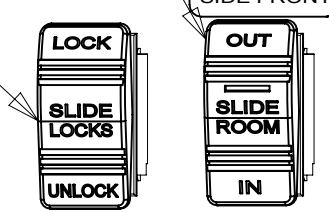
SWITCH-COACH BATT DISC
174757-07-CHT
(CIRCUITS KF,LG,LJ,LH,KF,WC)
WIRE ASM-THERM
186796-01-000

DETAIL EB

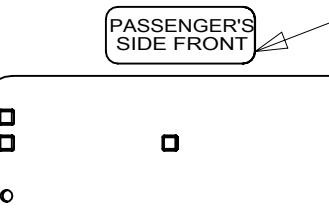
SWITCH
108357-18-CHT
ACTUATOR
108356-31-CHT
(CIRCUITS DR,DU,DT)

SWITCH
108357-06-000
ACTUATOR
108356-25-CHT
CIRCUITS
PPP,PPV,PPR,PPU

LABEL-SLIDEOUT,
DRIVER,FRONT
163992-01-CHT

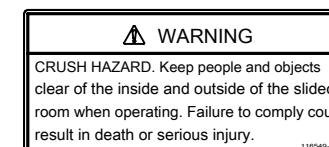


LABEL
163992-04-CHT



LABEL
116549-02-000

SWITCH ASM-SLIDEOUT
171341-01-000
SCREW
76790-05-000 (2)
CIRCUITS
SSN,HHF,NNN,
NNP,HHE,NNR,
WWR,WWP



DETAIL EB

3 SEE AWNING INSTL FOR ADDITIONAL INFORMATION.

2 SET 'GEN TYPE' TO 'QD 6-8'.
SET 'SAFE TYPE' TO 'IGNITION'
SET 'SP SENSE' TO 'AFTER'
SEE OWNERS MANUAL FOR SETUP PROCEDURE.

1 SET 'BAT TYPE' TO 'AGM2'
SET 'LBCO' TO '11VDC'
SET 'BAT AHRS' TO '600 AH'
SEE OWNERS MANUAL FOR SETUP PROCEDURE.

NOTES:

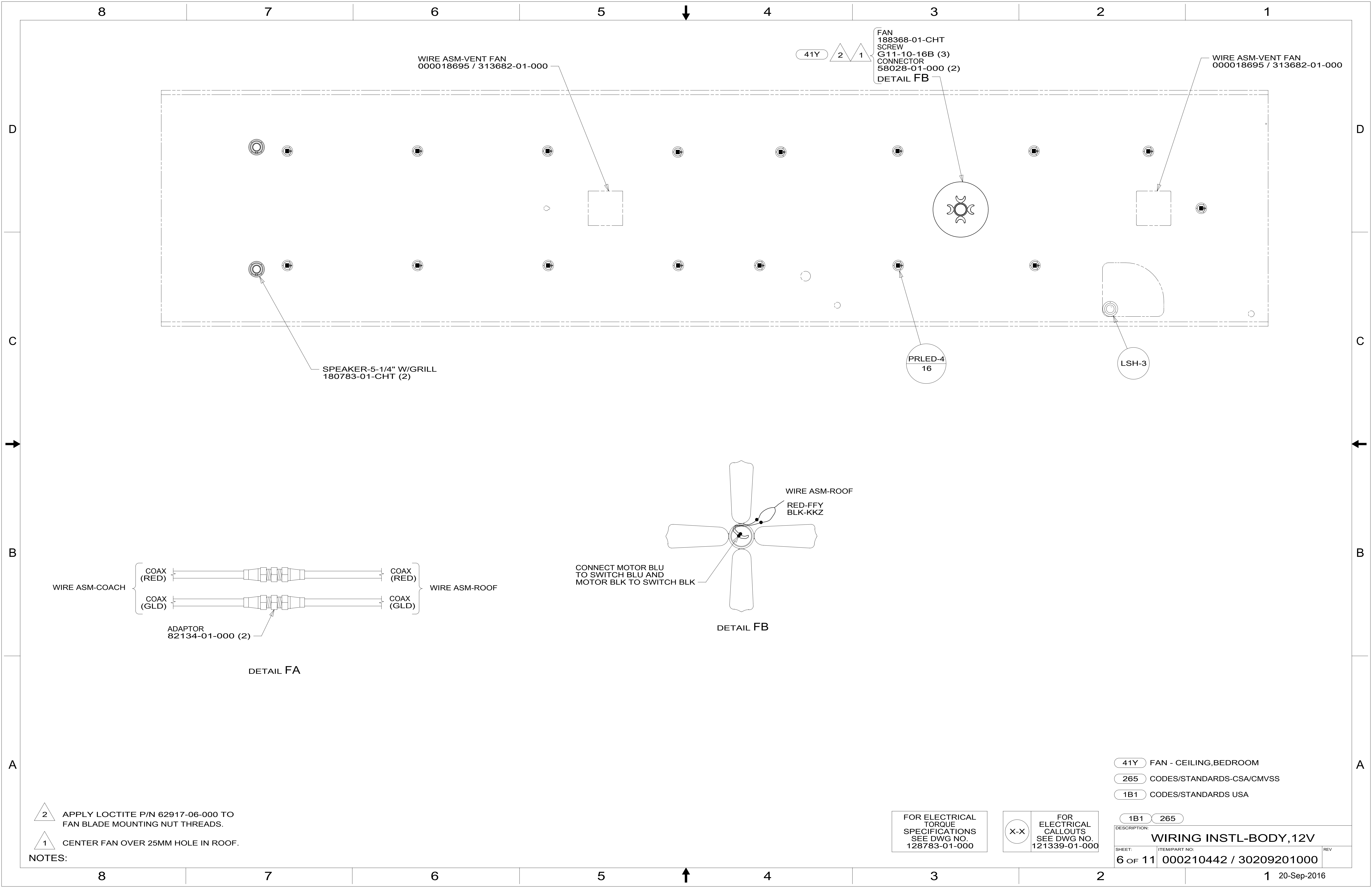
- 1B2 WTR HTR-10GAL/ELEC/LP/MTRAD
- 1BT WATER HEATER, TANKLESS
- 41Y FAN - CEILING,BEDROOM
- 265 CODES/STANDARDS-CSA/CMVSS
- 1B1 CODES/STANDARDS USA

FOR ELECTRICAL
TORQUE
SPECIFICATIONS
SEE DWG NO.
128783-01-000

FOR ELECTRICAL
CALLOUTS
SEE DWG NO.
121339-01-000

DESCRIPTION:
WIRING INSTL-BODY, 12V

SHEET: 5 of 11 ITEM/PART NO: 000210442 / 30209201000 REV



WIRE ASM-VENT FAN
000018695 / 313682-01-000

FAN
188368-01-CHT
SCREW
G11-10-16B (3)
CONNECTOR
58028-01-000 (2)
DETAIL FB

WIRE ASM-VENT FAN
000018695 / 313682-01-000

SPEAKER-5-1/4" W/GRILL
180783-01-CHT (2)

PRLED-4
16

LSH-3

WIRE ASM-ROOF
RED-FFY
BLK-KKZ

CONNECT MOTOR BLU
TO SWITCH BLU AND
MOTOR BLK TO SWITCH BLK

DETAIL FB

WIRE ASM-COACH

COAX (RED)

COAX (GLD)

ADAPTOR
82134-01-000 (2)

WIRE ASM-ROOF

COAX (RED)

COAX (GLD)

DETAIL FA

2 APPLY LOCTITE P/N 62917-06-000 TO
FAN BLADE MOUNTING NUT THREADS.

1 CENTER FAN OVER 25MM HOLE IN ROOF.

NOTES:

FOR ELECTRICAL
TORQUE
SPECIFICATIONS
SEE DWG NO.
128783-01-000

FOR ELECTRICAL
CALLOUTS
SEE DWG NO.
121339-01-000

41Y FAN - CEILING,BEDROOM

265 CODES/STANDARDS-CSA/CMVSS

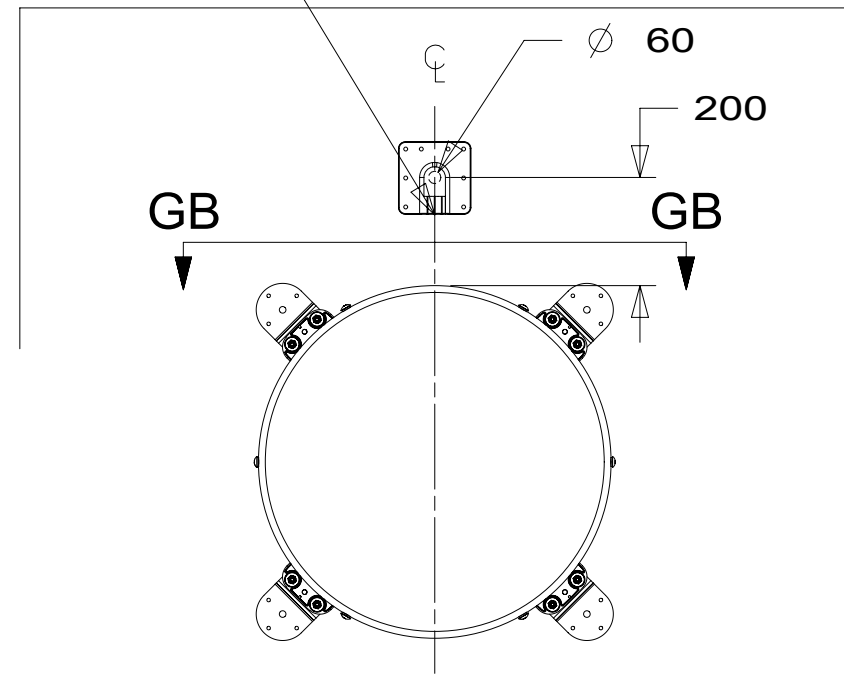
1B1 CODES/STANDARDS USA

1B1 265

DESCRIPTION:
WIRING INSTL-BODY, 12V

SHEET: 6 OF 11 ITEM/PART NO: 000210442 / 30209201000 REV

THE SATELLITE DISH WIRE CONNECTIONS ARE TO BE PLACED ON THE CENTERLINE OF THE MOTORHOME FACING FORWARD

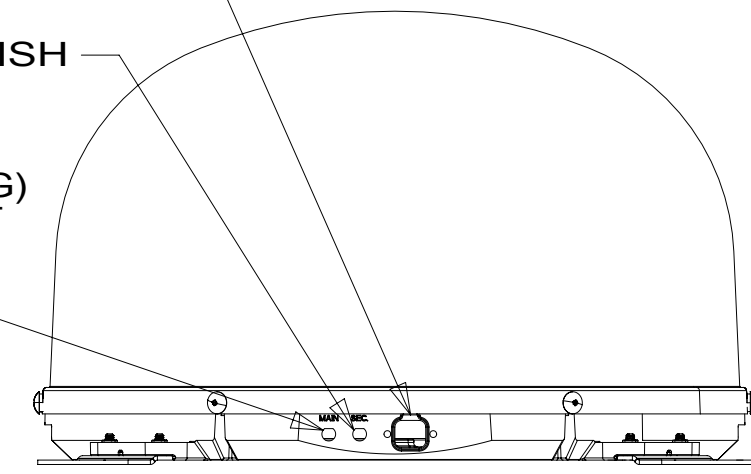


DETAIL GA 2

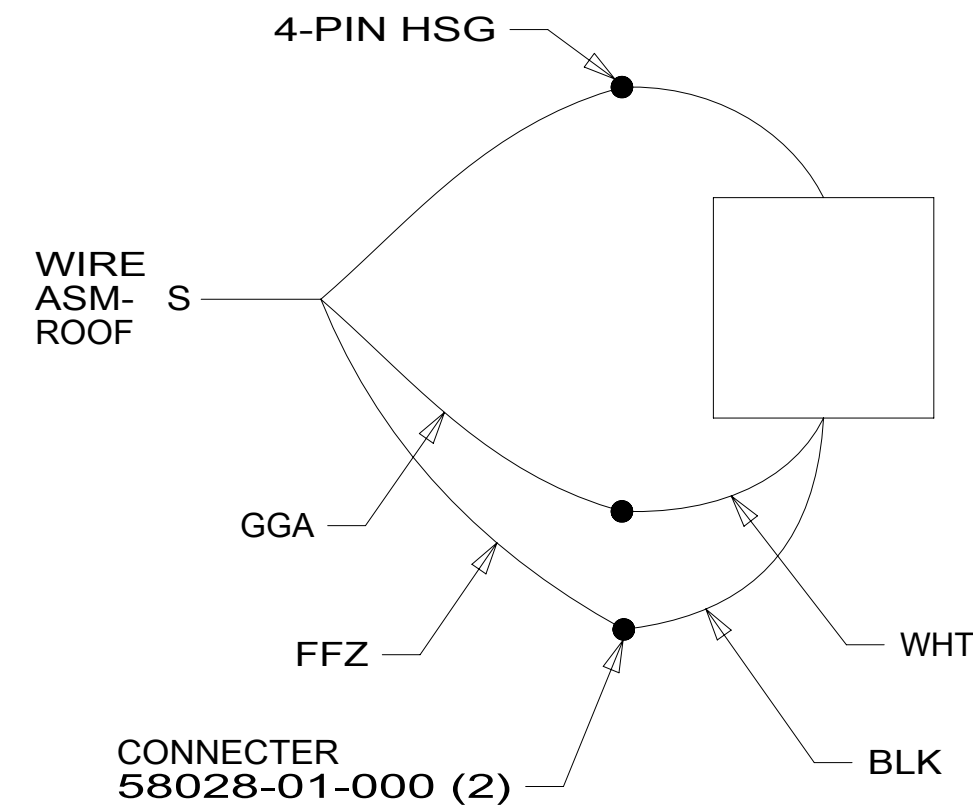
CONNECT 2-PIN HOUSING FROM ROOF ASM TO SATELLITE DISH HERE AND ADD CONVOLUTED TUBING

CONNECT CABLE ASM COAX (ORG-2) FROM ROOF ASM TO SEC INPUT ON SATELLITE DISH

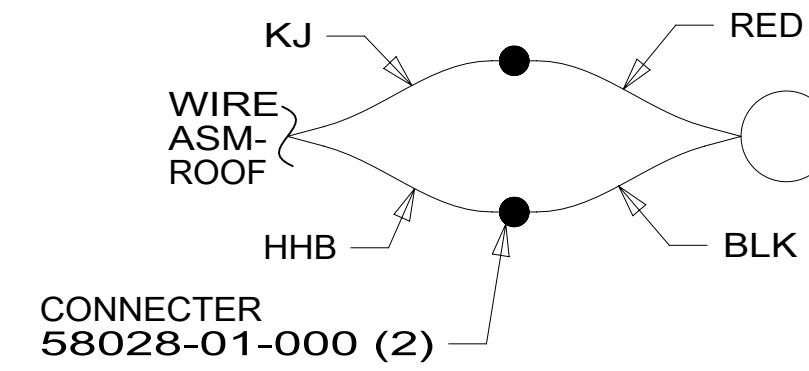
CONNECT CABLE ASM COAX (ORG) FROM ROOF ASM TO MAIN INPUT ON SATELLITE DISH



VIEW GB-GB



DETAIL GF

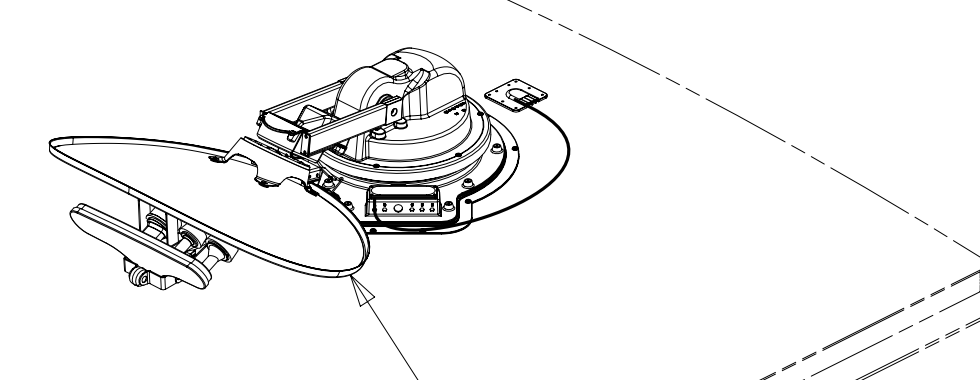


DETAIL GG

WIRING DETAIL GF

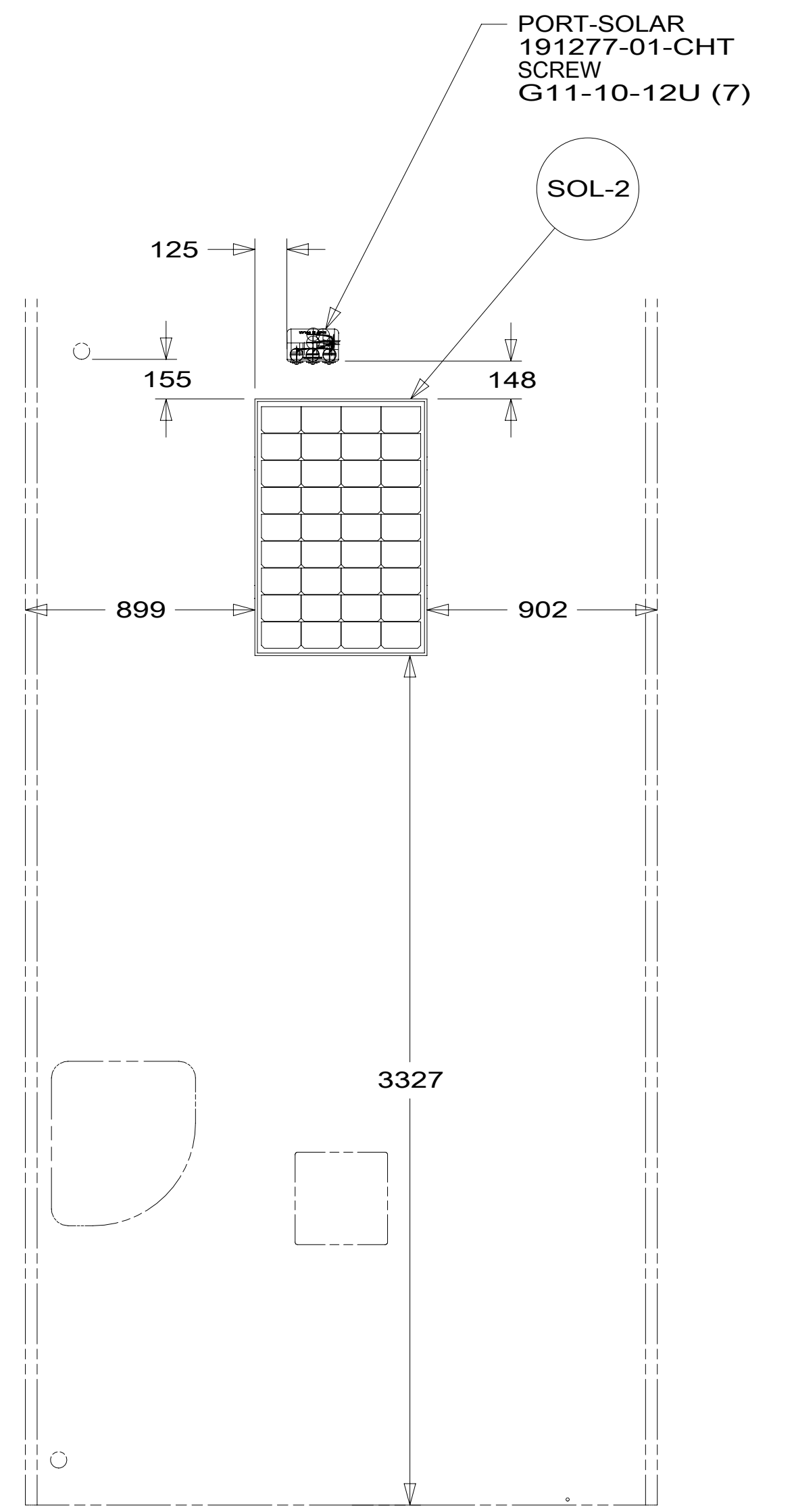
WIRING DETAIL GG

WIRING DETAIL GF



- DA-4 783 1 DETAIL GC
- DI-3 48P 1 DETAIL GA

- ANT-5 193 1



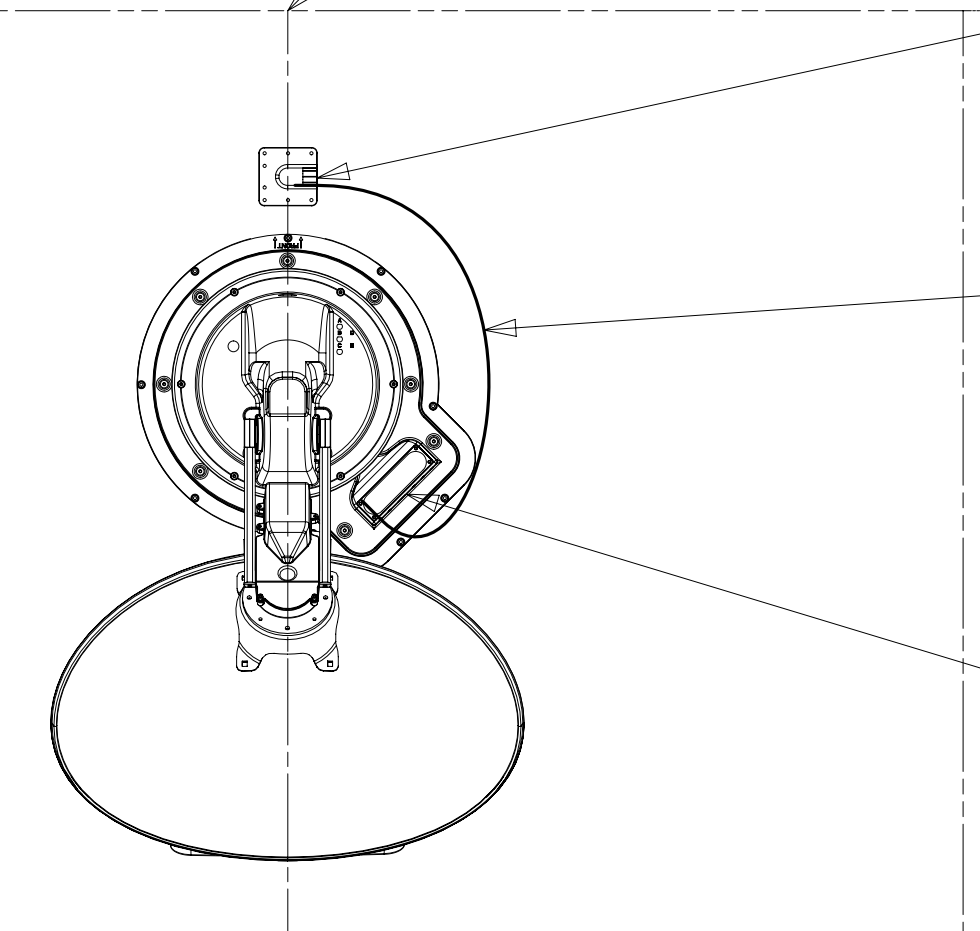
DETAIL GJ 282

THE SATELLITE DISH AND WIRE CONNECTIONS ARE TO BE PLACED ON THE CENTERLINE OF THE MOTORHOME FACING FORWARD.

SEPARATE CABLES AND INSTALL WIRE COVER OVER HOLE IN ROOF ASM WITH CABLES EXITING ON PASSENGERS SIDE.

WHEN APPLYING ROOF SEALANT TO SATELLITE DISH, PLACE ROOF SEALANT HERE (APPROXIMATELY 75MM WIDE) AND PUSH THE CABLES INTO THE SEALANT TO STABILIZE THEM.

CONNECT CABLE ASM-COAX FROM ROOF ASM TO COAX CABLES ON SATELLITE DISH AND CONNECT 10' CABLE-DATA FROM ROOF ASM TO DATA CABLE FROM SATELLITE DISH AND PLACE ALL CONNECTIONS BACK INTO ROOF ASM.



DETAIL GC

FOR ELECTRICAL TORQUE SPECIFICATIONS SEE DWG NO. 128783-01-000

FOR ELECTRICAL CALLOUTS SEE DWG NO. 121339-01-000

- 282 SOLAR PANEL - 100 WATT
- 783 SATELLITE HD TV SYSTEM AUTOC
- 193 TV ANTENNA-AMPLIFIED SYSTEM
- 48P SAT TV SYSTEM IN-MOTION
- 265 CODES/STANDARDS-CSA/CMVSS
- 1B1 CODES/STANDARDS USA

2 REMOVE ALL SHIPPING RESTRAINTS AND FIRMLY INSERT THE SUPPLIED PLUGS INTO THE APPROPRIATE SIZED HOLES AS SPECIFIED IN THE INSTALLATION PROCESS.

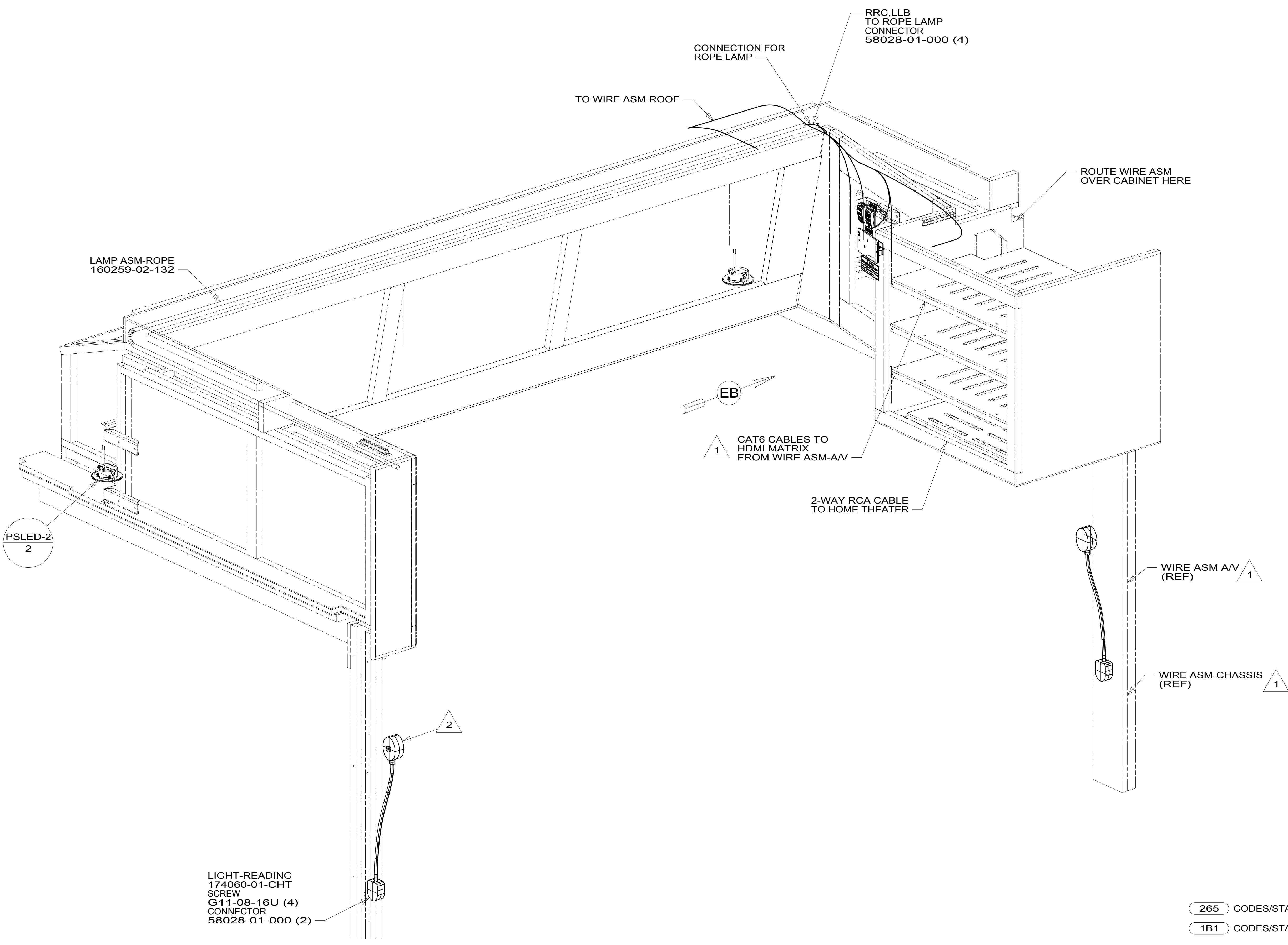
1 SEE MANUFACTURER'S INSTALLATION FOR ADDITIONAL INFORMATION.

NOTES:

| | | |
|---|--|-----|
| DESCRIPTION: WIRING INSTL-BODY, 12V | | |
| SHEET: 7 of 11 | ITEM/PART NO: 000210442 / 30209201000 | REV |

8 7 6 5 4 3 2 1

D
C
B
A



2 WIRE IS FROM WIRE ASM-IP,MAIN. SEE WIRING INSTL-FRONT END FOR ADDITIONAL INFORMATION.

1 SEE WIRING INSTL-CHASSIS FOR ADDITIONAL INFORMATION.

NOTES:

FOR ELECTRICAL TORQUE SPECIFICATIONS SEE DWG NO. 128783-01-000

FOR ELECTRICAL CALLOUTS SEE DWG NO. 121339-01-000

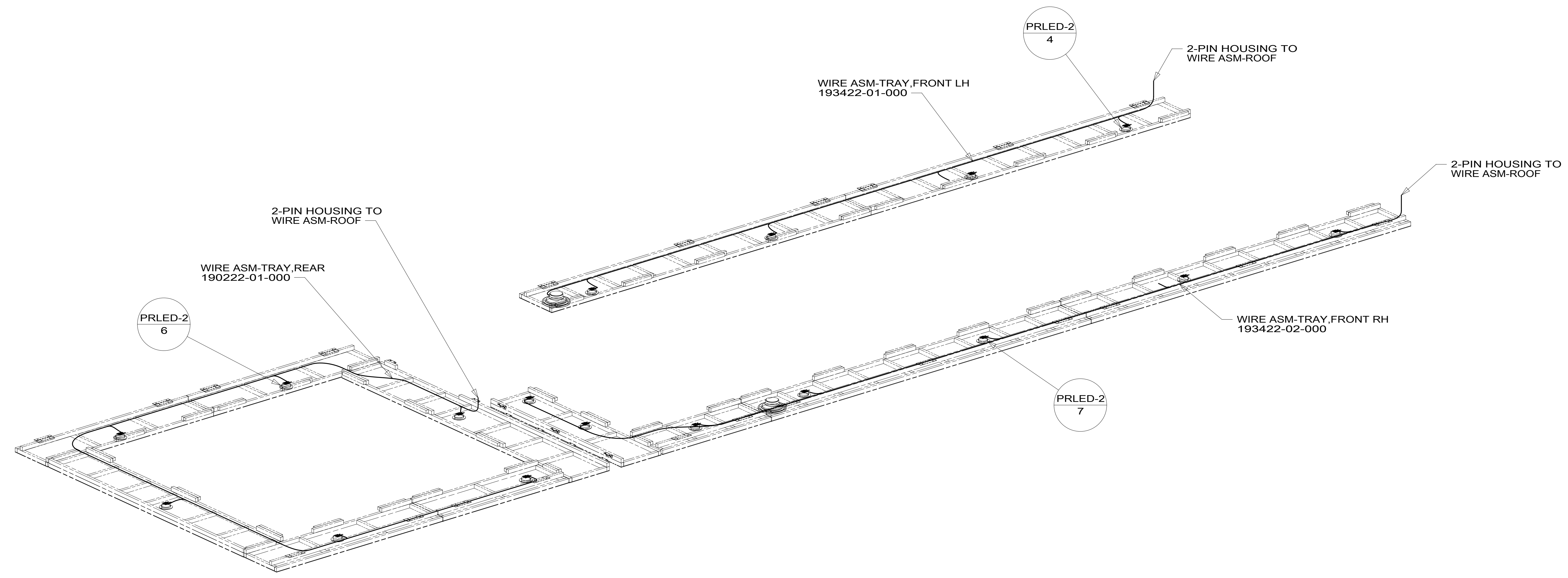
265 CODES/STANDARDS-CSA/CMVSS
1B1 CODES/STANDARDS USA

| | | | |
|-------------------------------|-------------------------|---------|--|
| DESCRIPTION: | | 1B1 265 | |
| WIRING INSTL-BODY, 12V | | | |
| SHEET: | ITEM/PART NO.: | REV | |
| 8 OF 11 | 000210442 / 30209201000 | | |

8 7 6 5 4 3 2 1 20-Sep-2016

8 7 6 5 4 3 2 1

D
C
B
A



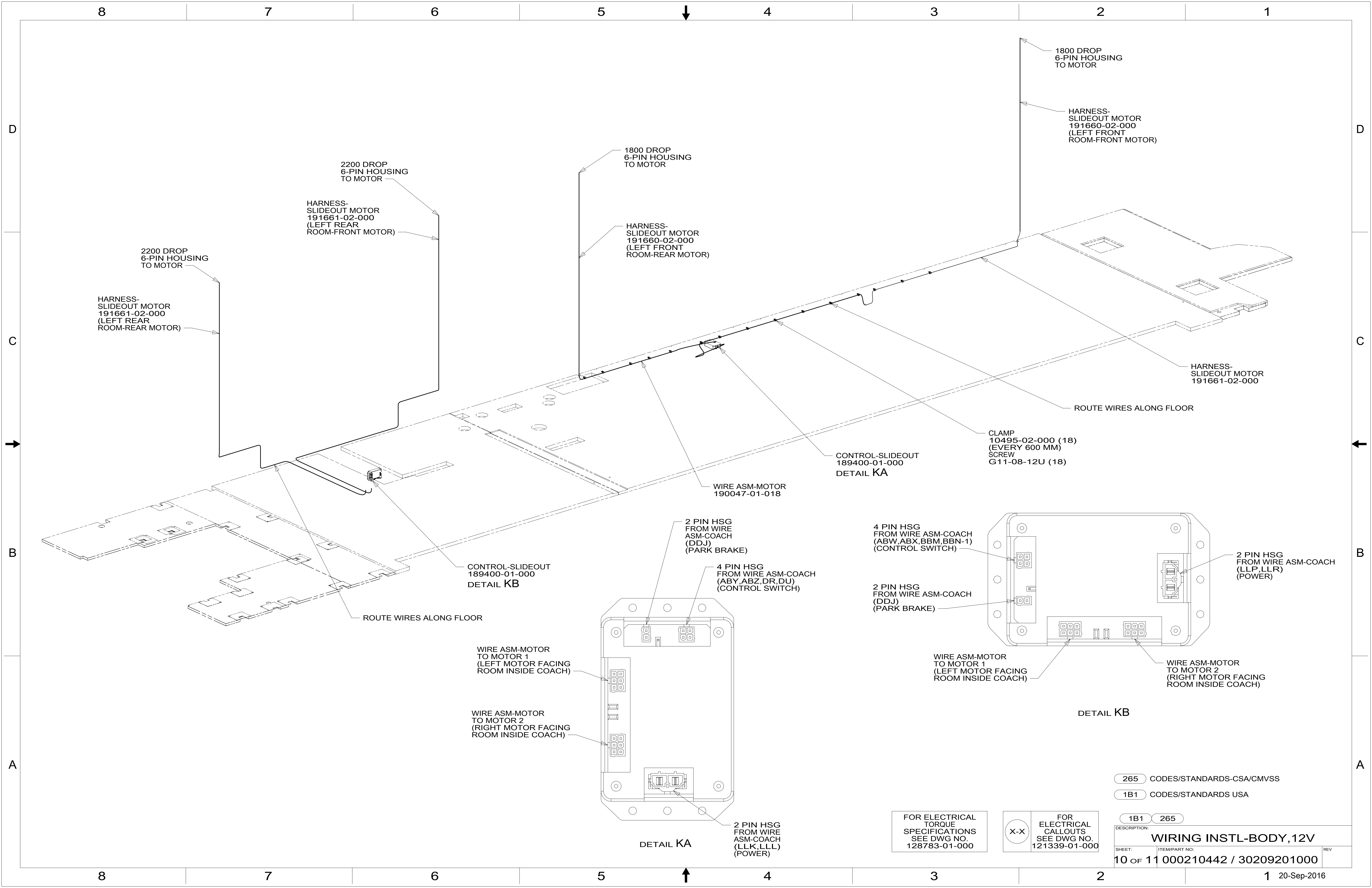
265 CODES/STANDARDS-CSA/CMVSS
 1B1 CODES/STANDARDS USA

FOR ELECTRICAL
 TORQUE
 SPECIFICATIONS
 SEE DWG NO.
 128783-01-000

FOR ELECTRICAL
 CALLOUTS
 SEE DWG NO.
 121339-01-000

1B1 265
 DESCRIPTION:
WIRING INSTL-BODY, 12V
 SHEET: 9 OF 11 ITEM/PART NO: 000210442 / 30209201000 REV

8 7 6 5 4 3 2 1 20-Sep-2016



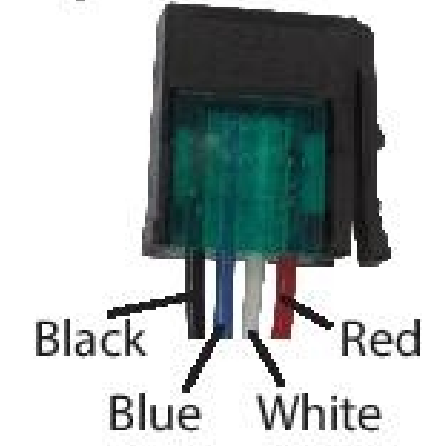
WINNEBAGO - P42E

SSP -15 NETWORK WIRING DIAGRAM

SWITCH PANEL LAYOUT

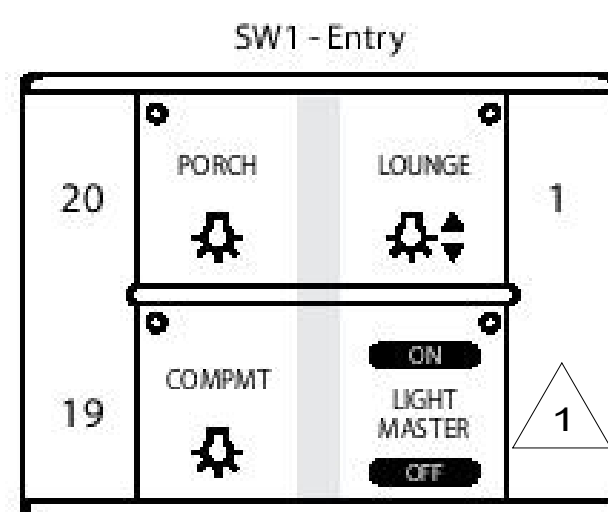
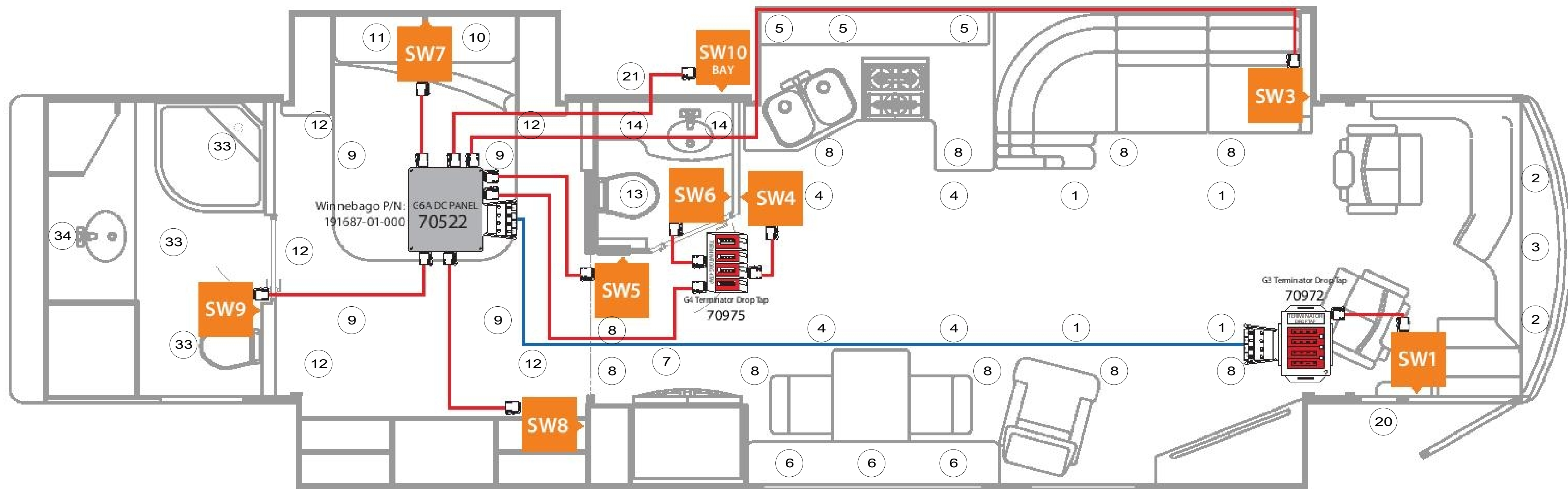
REVISION 1v7 3/4/15

Drop Cable Connections

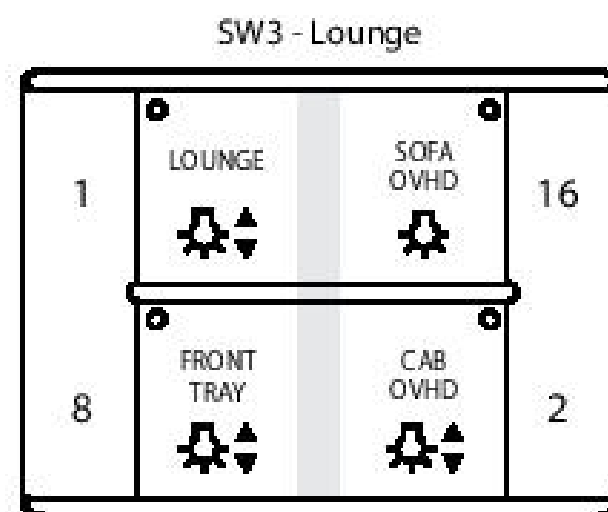


NETWORK LEGEND

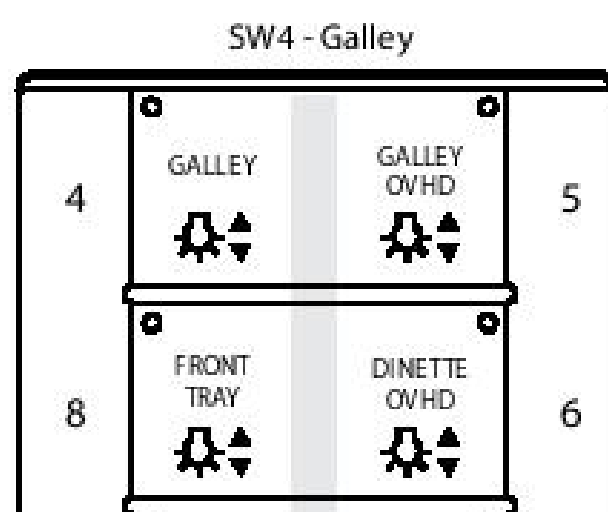
TRUNK CABLE 
 DROP CABLE 
 SWITCH POSITION 



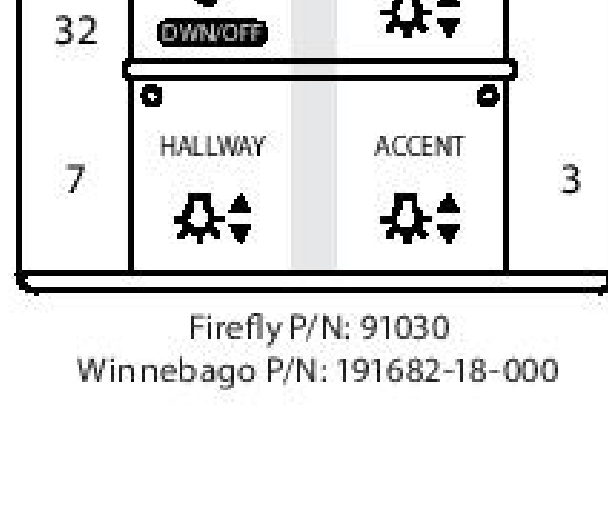
Firefly P/N: 91001
Winnebago P/N: 191682-01-000



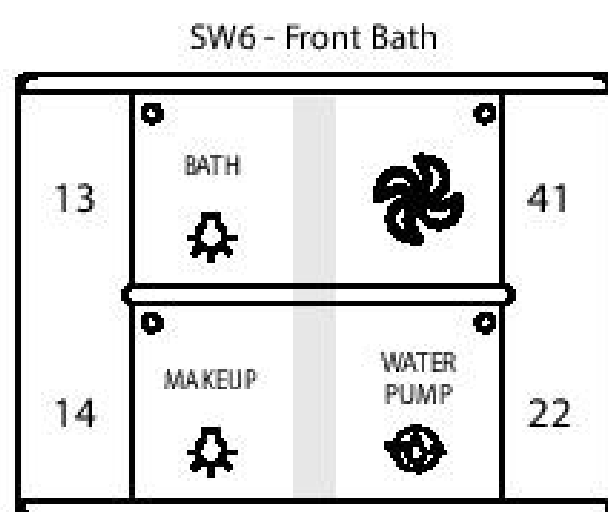
Firefly P/N: 91020
Winnebago P/N: 191682-19-000



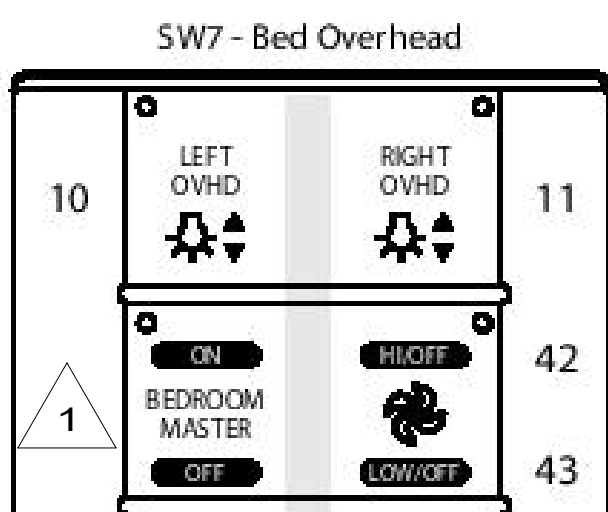
Firefly P/N: 91030
Winnebago P/N: 191682-18-000



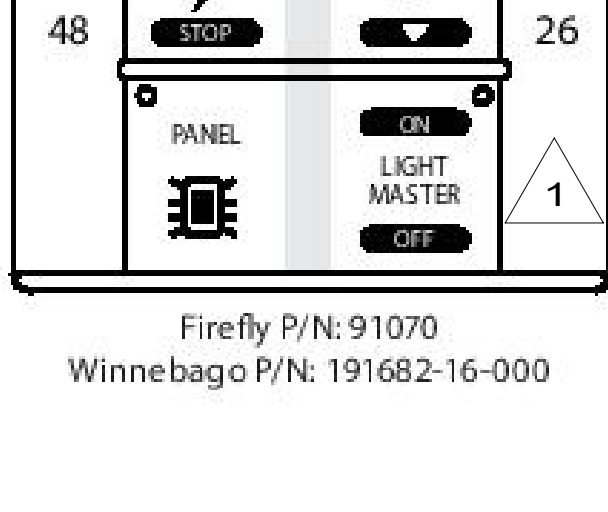
Firefly P/N: 91040
Winnebago P/N: 191682-20-000



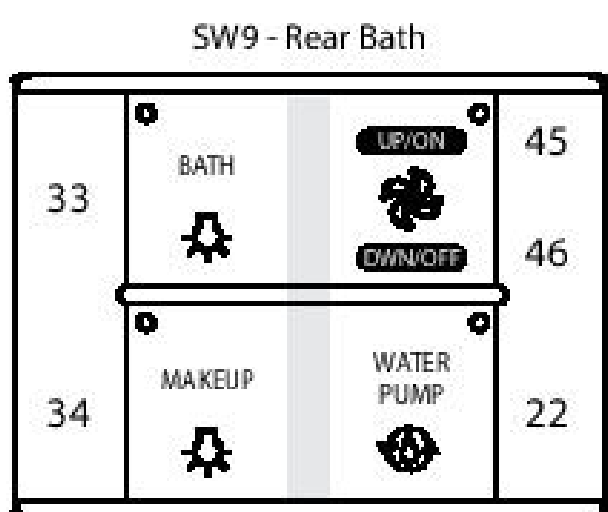
Firefly P/N: 91060
Winnebago P/N: 191682-15-000



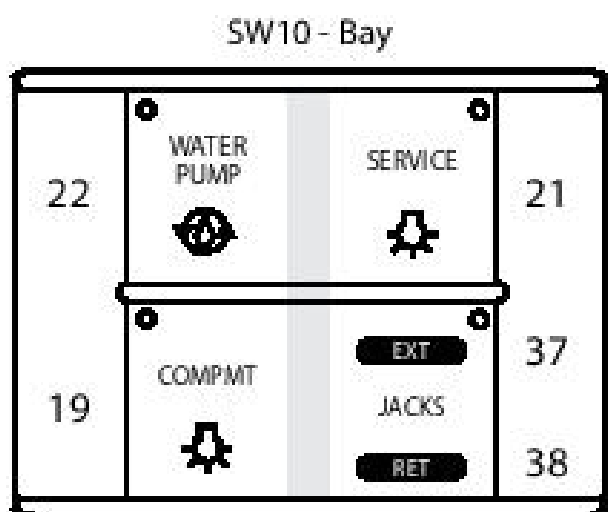
Firefly P/N: 91070
Winnebago P/N: 191682-16-000



Firefly P/N: 91080
Winnebago P/N: 191682-17-000



Firefly P/N: 91061
Winnebago P/N: 191682-06-000



Firefly P/N: 91095
Winnebago P/N: 191682-09-000

NOTES:
 1 LIGHT MASTER: ON: 1-17; OFF: 1-18,33,34,32,46
 FRONT MASTER (LIGHT): ON: 1-8,13,14,16,17; OFF: 1-8,13,14,16,17
 BEDROOM MASTER (LIGHT): ON: 9-12; OFF: 9-12,18

THIS SHEET FOR REFERENCE ONLY

FOR ELECTRICAL TORQUE SPECIFICATIONS SEE DWG NO. 128783-01-000

FOR ELECTRICAL CALLOUTS SEE DWG NO. 121339-01-000

265 CODES/STANDARDS-CSA/CMVSS

1B1 CODES/STANDARDS USA

1B1 265

DESCRIPTION:
WIRING INSTL-BODY, 12V

SHEET: 11 OF 11 ITEM/PART NO: 000210442 / 30209201000 REV