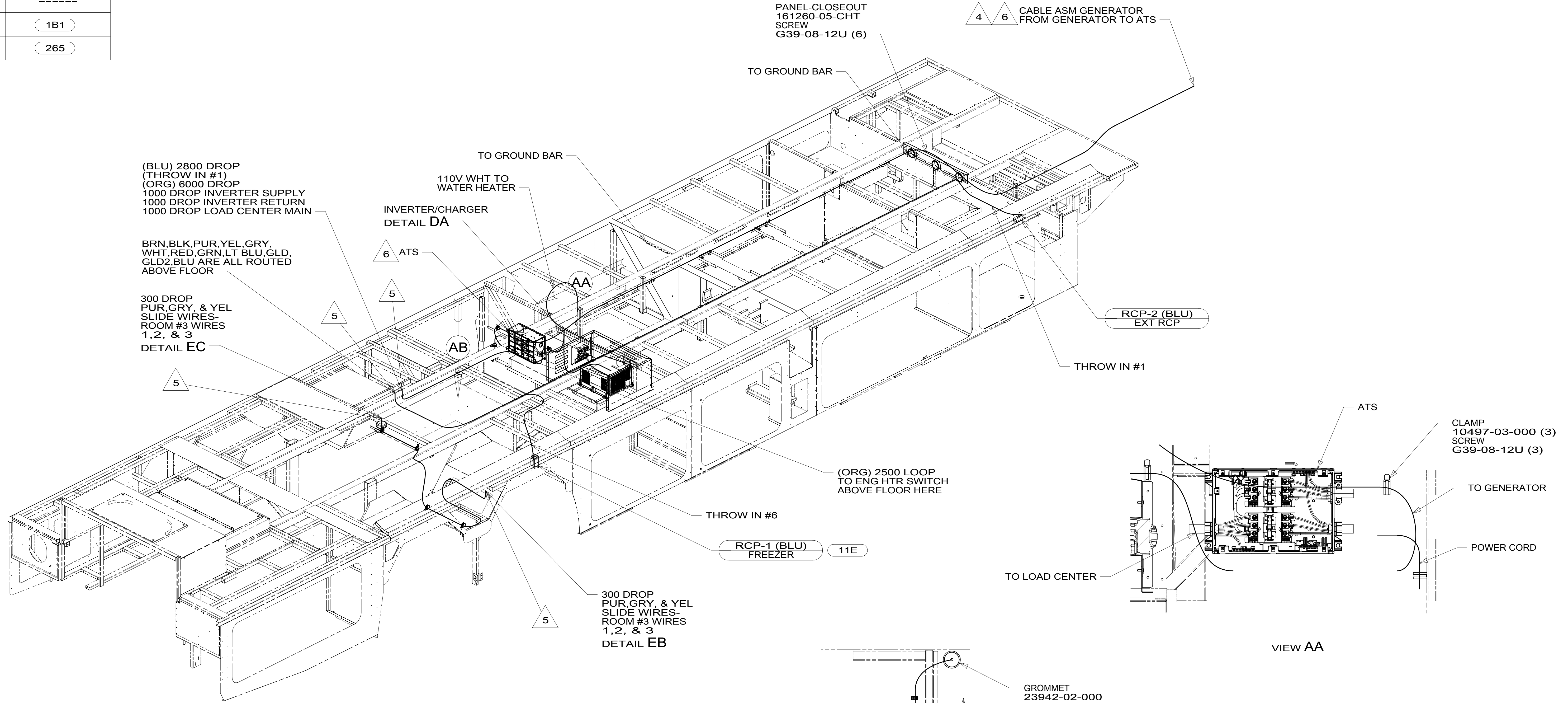


DRAWING NO	FEATURE
302091-01	-----
302091-12	1B1
302091-16	265

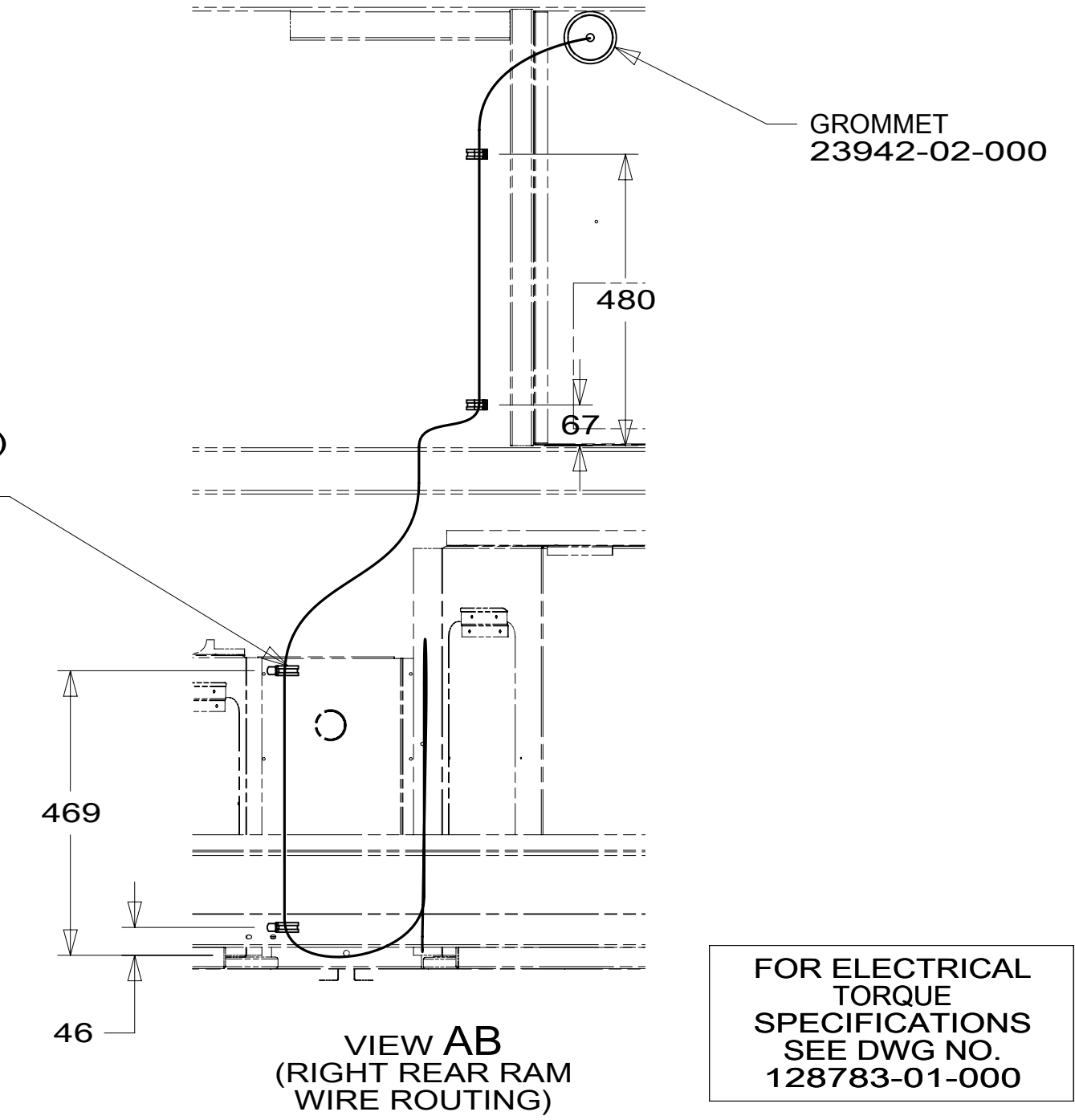


- 6 SEE LOAD CENTER/ATS ASM FOR ADDITIONAL INFORMATION.
- 5 TO ABOVE FLOOR.
- 4 SEE GENERATOR INSTALLATION FOR ADDITIONAL INFORMATION.

3. WIRES THAT REST ON WIRE TRAYS ARE TO BE TIED DOWN WITH WIRE TIE 8343-04-000.
2. CLAMP TO FLOOR SUPPORT TUBES AS NECESSARY WITH CLAMP 10497-01-000.
1. AT MINIMUM ALL WIRES TO BE SUPPORTED AND SECURED PER CODE REQUIREMENTS. USE CLAMP 10495 OR 10497 OR WIRE TIE 8343 OR 108046 AND SCREW G67-XX-XXX OR G56-XX-XXX AS APPROPRIATE FOR INSTALLATION.

NOTES:

CLAMP  
10497-03-000 (4)  
SCREW  
G39-08-12U (4)



FOR ELECTRICAL TORQUE SPECIFICATIONS SEE DWG NO. 128783-01-000

FOR ELECTRICAL CALLOUTS SEE DWG NO. 121339-01-000

- 11E REFRIGERATOR/FREEZER PORTABL
- 265 CODES/STANDARDS-CSA/CMVSS
- 1B1 CODES/STANDARDS USA

**WINNEBAGO**  
COPYRIGHT 2016 WINNEBAGO INDUSTRIES, INC.

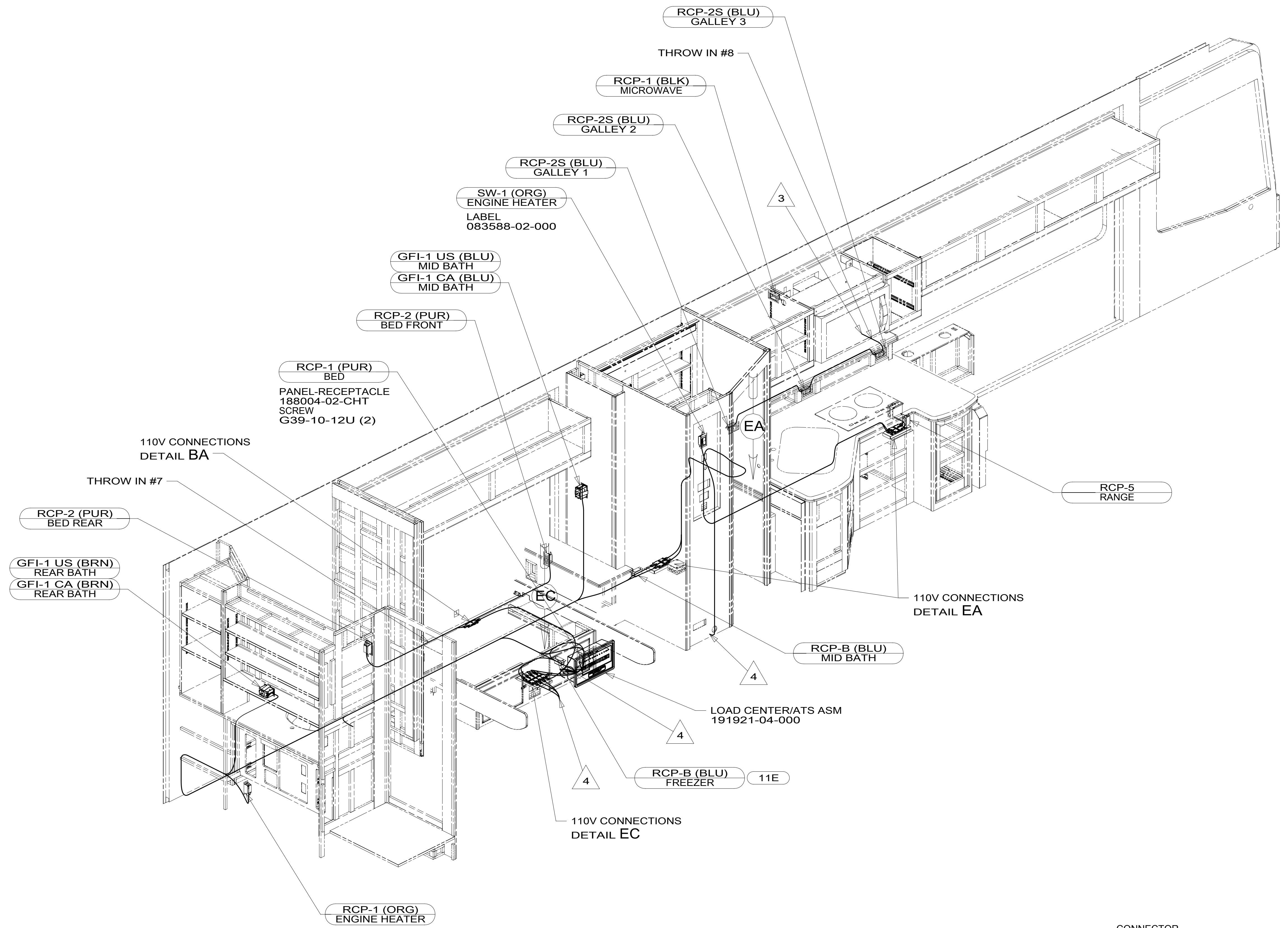
DSNR:	ALL DIMENSIONS ARE IN MILLIMETERS
DFFR:	MATERIAL:
UNSPECIFIED TOLERANCES:	WEIGHT: (LBS)
WHOLE DIM (X) :	FIRST USED:
ONE-PLACE (X.X) :	
TWO-PLACE (X.XX) :	
ANGLE :	

REFER TO ES0018 FOR FASTENER TIGHTENING GUIDELINES

**WIRING INSTL-BODY, 110V**

SHEET:	ITEM/PART NO:	REV:
1 OF 6	000210441 / 30209101000	

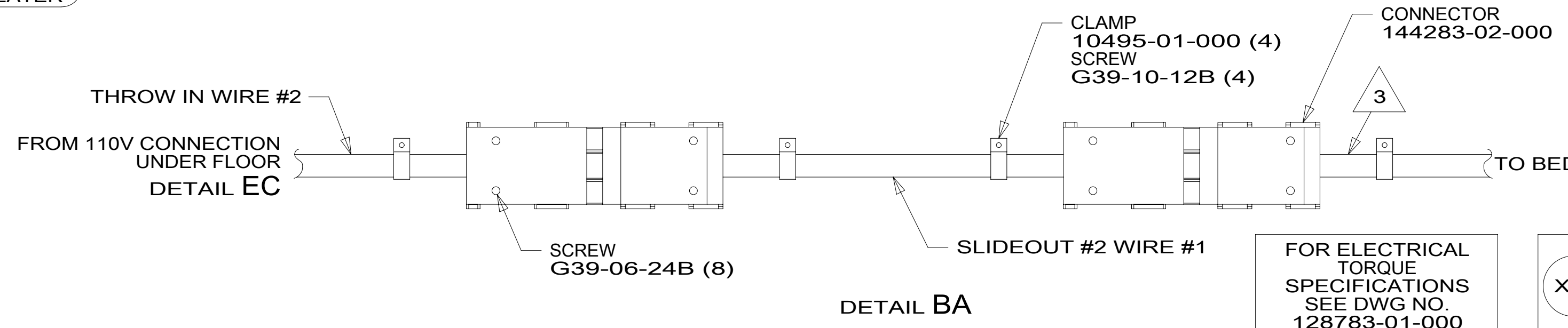
REF: 1 20-Sep-2016



- 4 TO BELOW FLOOR.
- 3 WIRE ROUTED IN SIDEWALL.

2. ALL 110V WIRES TO BE CLAMPED WITH CLAMP 10495-05-000 WITHIN 200MM OF OUTLET BOXES, USE SCREW G67-10-12B.
1. AT MINIMUM ALL WIRES TO BE SUPPORTED AND SECURED PER CODE REQUIREMENTS. USE CLAMP 10495 OR 10497 OR WIRE TIE 8343 OR 108046 AND SCREW G67-XX-XXX OR G56-XX-XXX AS APPROPRIATE FOR INSTALLATION.

NOTES:

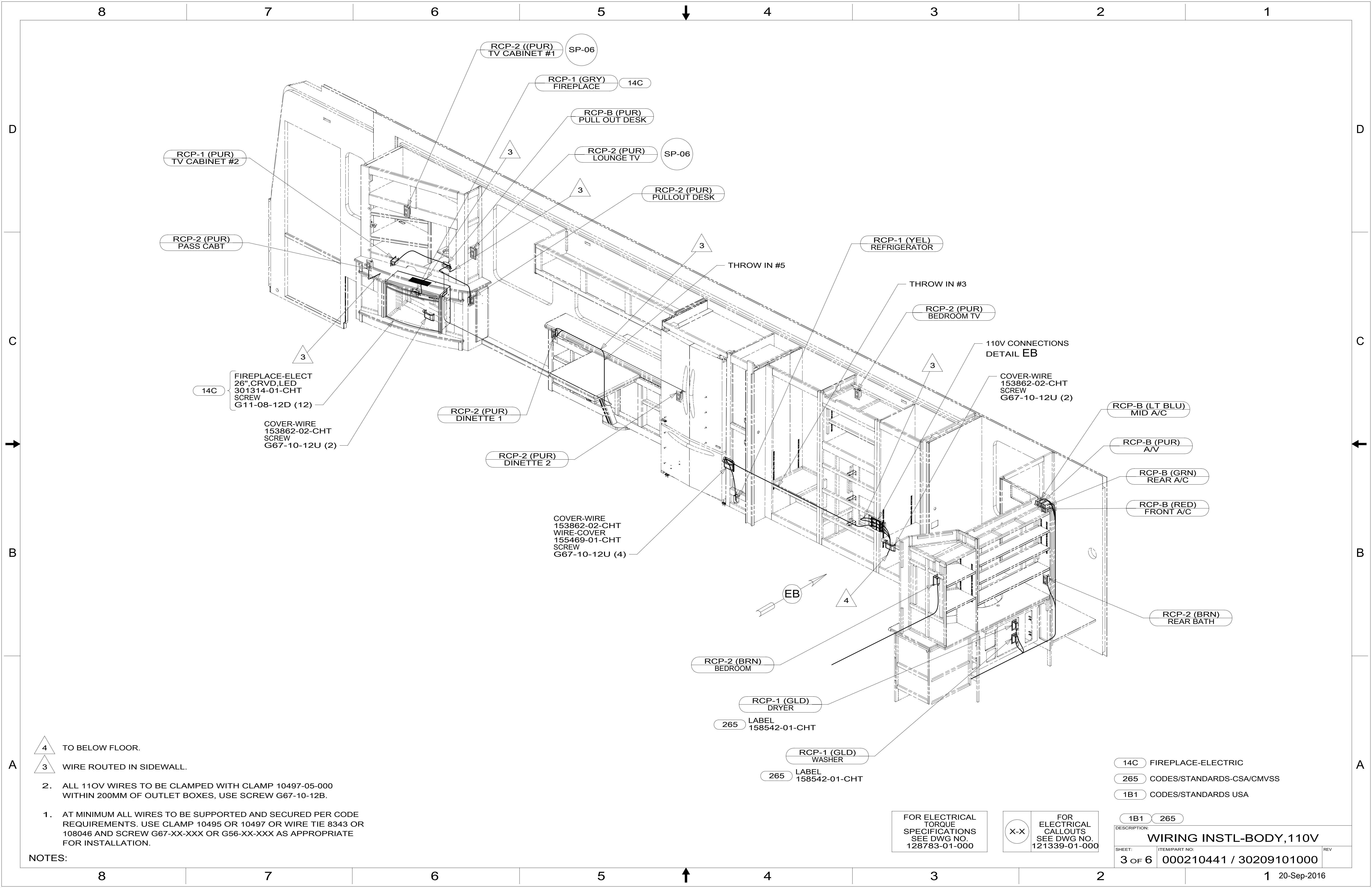


FOR ELECTRICAL TORQUE SPECIFICATIONS SEE DWG NO. 128783-01-000

FOR ELECTRICAL CALLOUTS SEE DWG NO. 121339-01-000

- 11E REFRIGERATOR/FREEZER PORTABL
- 265 CODES/STANDARDS-CSA/CMVSS
- 1B1 CODES/STANDARDS USA

DESCRIPTION:		1B1 265	
<b>WIRING INSTL-BODY, 110V</b>			
SHEET:	ITEM/PART NO.:	REV	
2 OF 6	000210441 / 30209101000		



RCP-1 (PUR)  
TV CABINET #2

RCP-2 (PUR)  
PASS CABT

FIREPLACE-ELECT  
26",CRVD,LED  
301314-01-CHT  
SCREW  
G11-08-12D (12)

COVER-WIRE  
153862-02-CHT  
SCREW  
G67-10-12U (2)

RCP-2 ((PUR)  
TV CABINET #1

RCP-1 (GRY)  
FIREPLACE

RCP-B (PUR)  
PULL OUT DESK

RCP-2 (PUR)  
LOUNGE TV

RCP-2 (PUR)  
PULLOUT DESK

RCP-1 (YEL)  
REFRIGERATOR

RCP-2 (PUR)  
BEDROOM TV

110V CONNECTIONS  
DETAIL EB

COVER-WIRE  
153862-02-CHT  
SCREW  
G67-10-12U (2)

RCP-B (LT BLU)  
MID A/C

RCP-B (PUR)  
A/V

RCP-B (GRN)  
REAR A/C

RCP-B (RED)  
FRONT A/C

RCP-2 (PUR)  
DINETTE 1

RCP-2 (PUR)  
DINETTE 2

COVER-WIRE  
153862-02-CHT  
WIRE-COVER  
155469-01-CHT  
SCREW  
G67-10-12U (4)

RCP-2 (BRN)  
BEDROOM

RCP-1 (GLD)  
DRYER

265 LABEL  
158542-01-CHT

RCP-1 (GLD)  
WASHER

265 LABEL  
158542-01-CHT

RCP-2 (BRN)  
REAR BATH

- 4 TO BELOW FLOOR.
- 3 WIRE ROUTED IN SIDEWALL.

2. ALL 110V WIRES TO BE CLAMPED WITH CLAMP 10497-05-000 WITHIN 200MM OF OUTLET BOXES, USE SCREW G67-10-12B.
1. AT MINIMUM ALL WIRES TO BE SUPPORTED AND SECURED PER CODE REQUIREMENTS. USE CLAMP 10495 OR 10497 OR WIRE TIE 8343 OR 108046 AND SCREW G67-XX-XXX OR G56-XX-XXX AS APPROPRIATE FOR INSTALLATION.

NOTES:

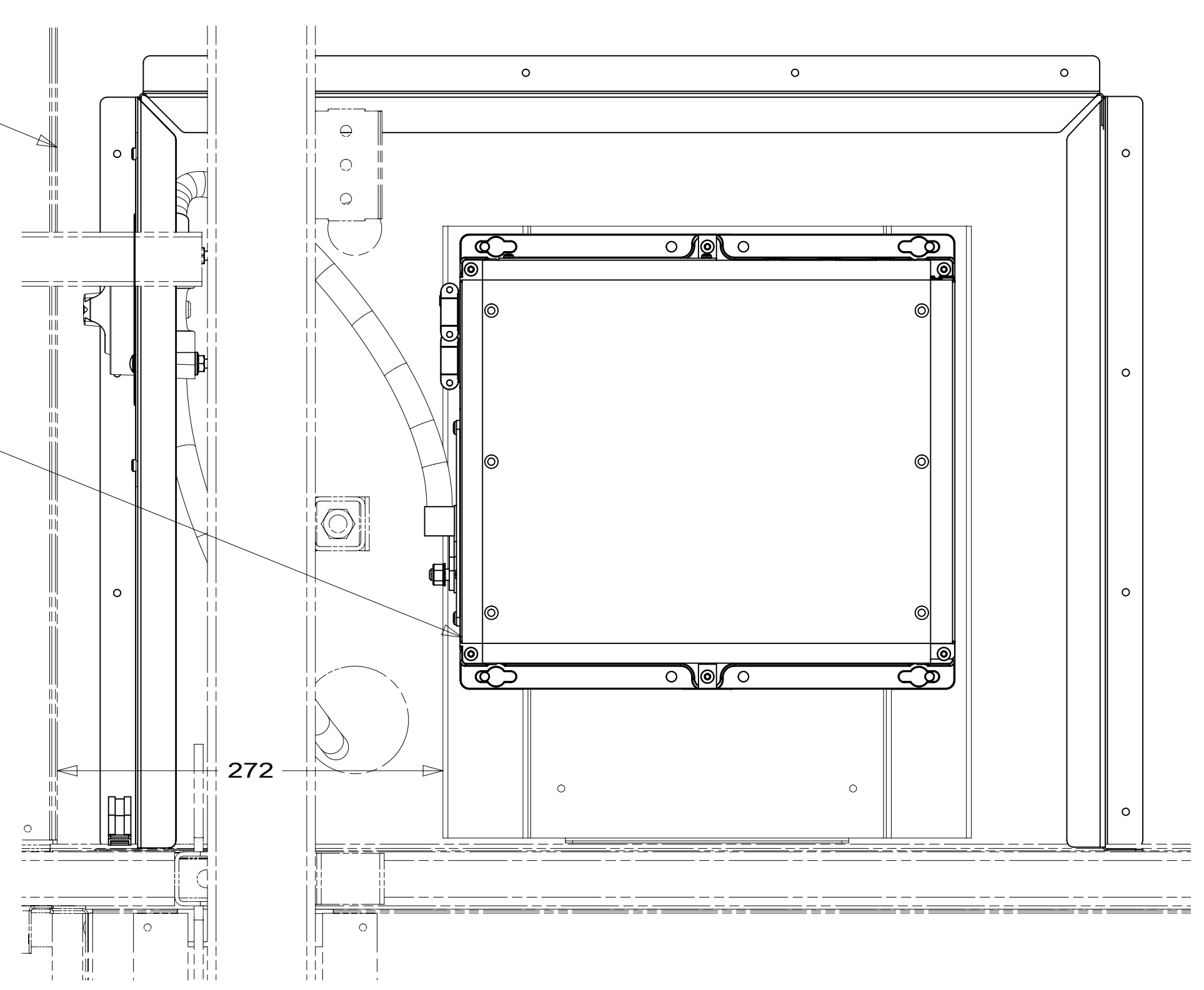
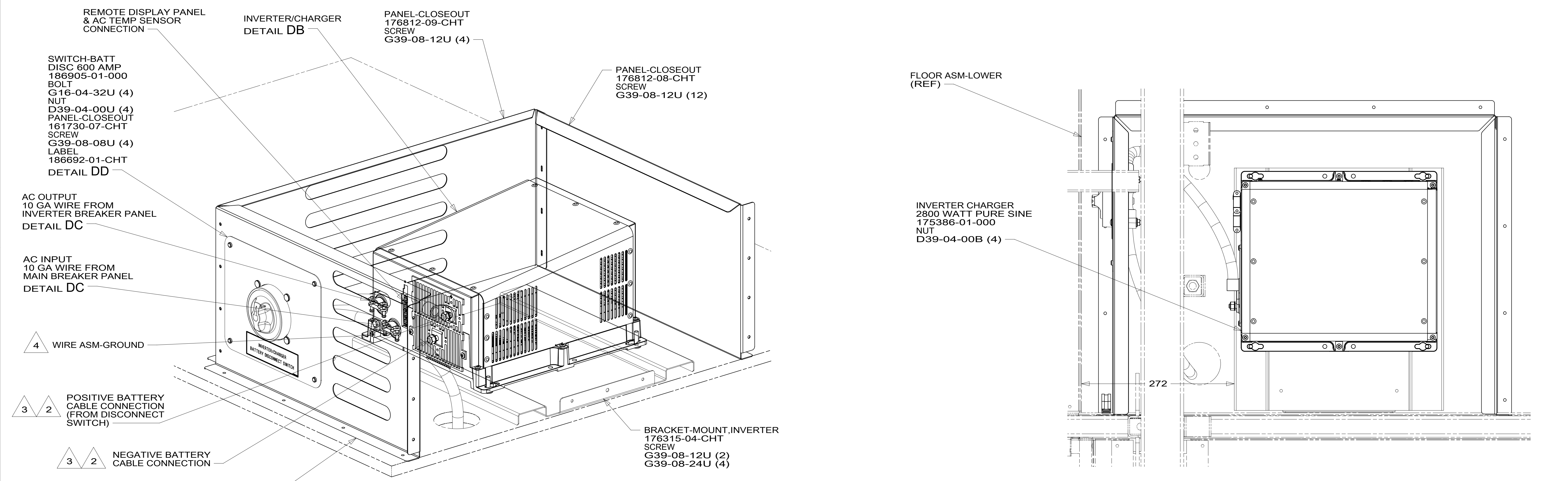
FOR ELECTRICAL  
TORQUE  
SPECIFICATIONS  
SEE DWG NO.  
128783-01-000

FOR  
ELECTRICAL  
CALLOUTS  
SEE DWG NO.  
121339-01-000

- 14C FIREPLACE-ELECTRIC
- 265 CODES/STANDARDS-CSA/CMVSS
- 1B1 CODES/STANDARDS USA

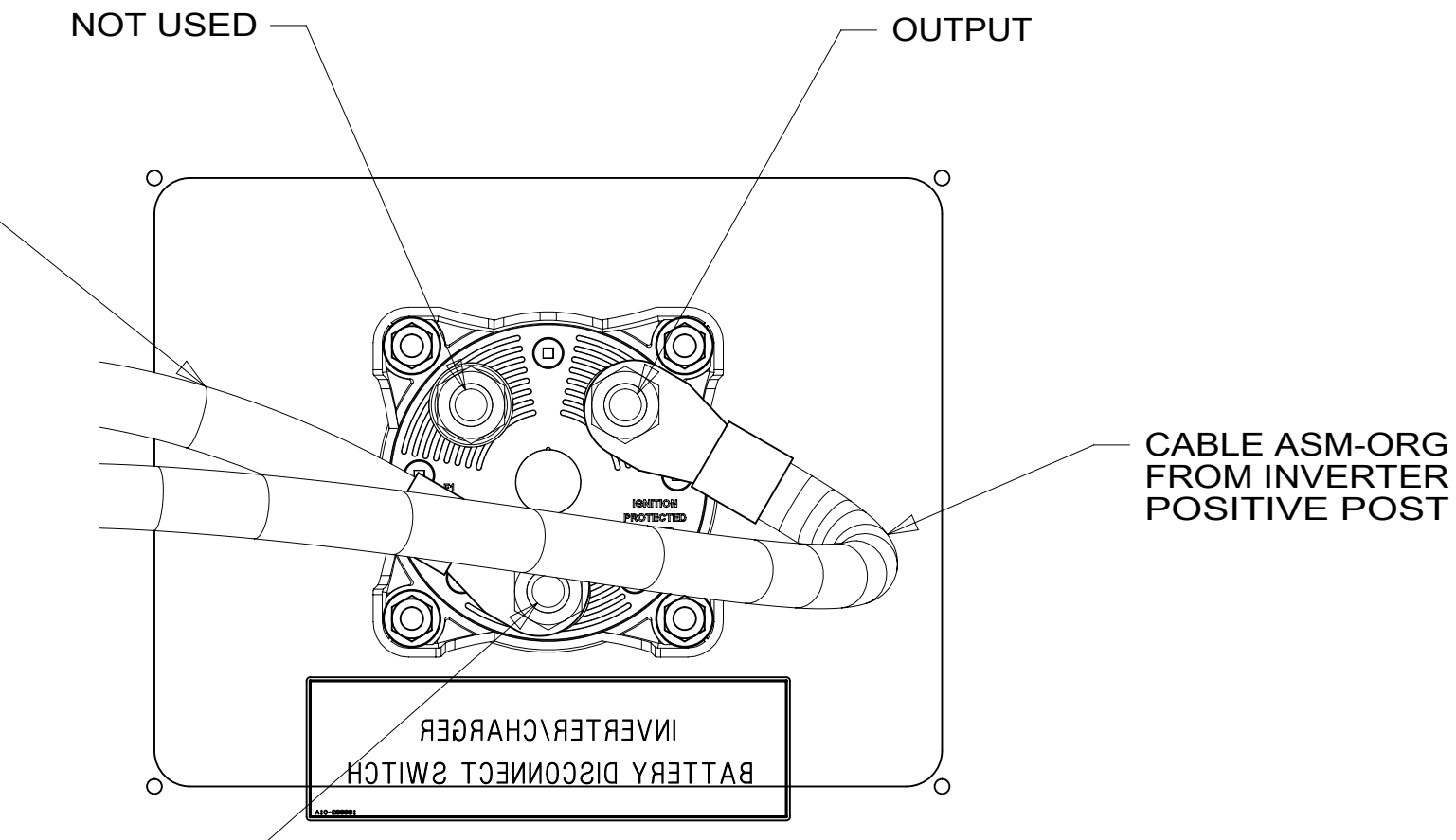
DESCRIPTION: <b>WIRING INSTL-BODY, 110V</b>	
SHEET: 3 OF 6	ITEM/PART NO: 000210441 / 30209101000
REV	

8 7 6 5 4 3 2 1

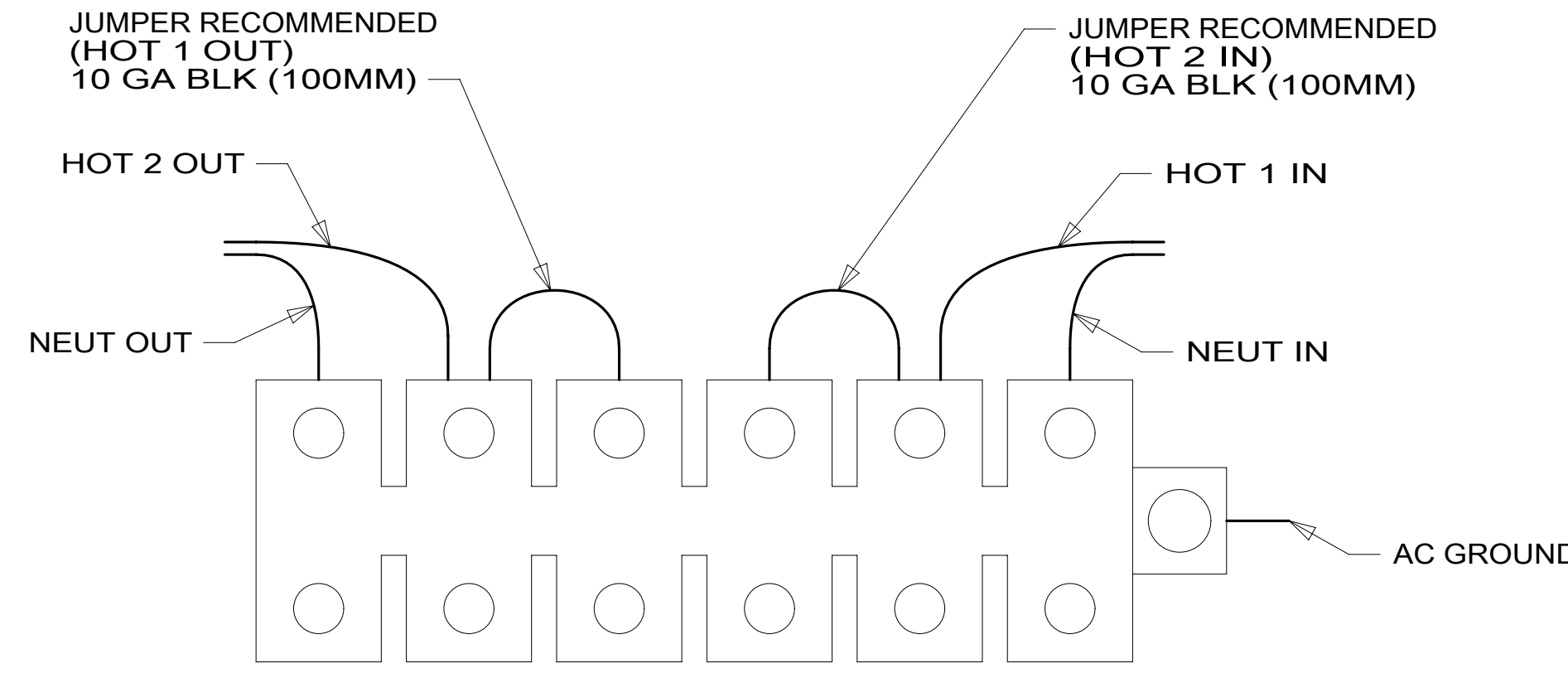


DETAIL DA

DETAIL DB



DETAIL DD



DETAIL DC

- 4 SEE LOAD CENTER/ATS ASM FOR ADDITIONAL INFORMATION.
- 3 DO NOT USE POWER/AIR TOOL TO INSTALL NUT. TORQUE TO 10-12 FT LBS.
- 2 SEE WIRING INSTL-CHASSIS FOR ADDITIONAL INFORMATION.

NOTES:  
1. WIRE MUST BE ROUTED THROUGH CLAMPS AS SHOWN.

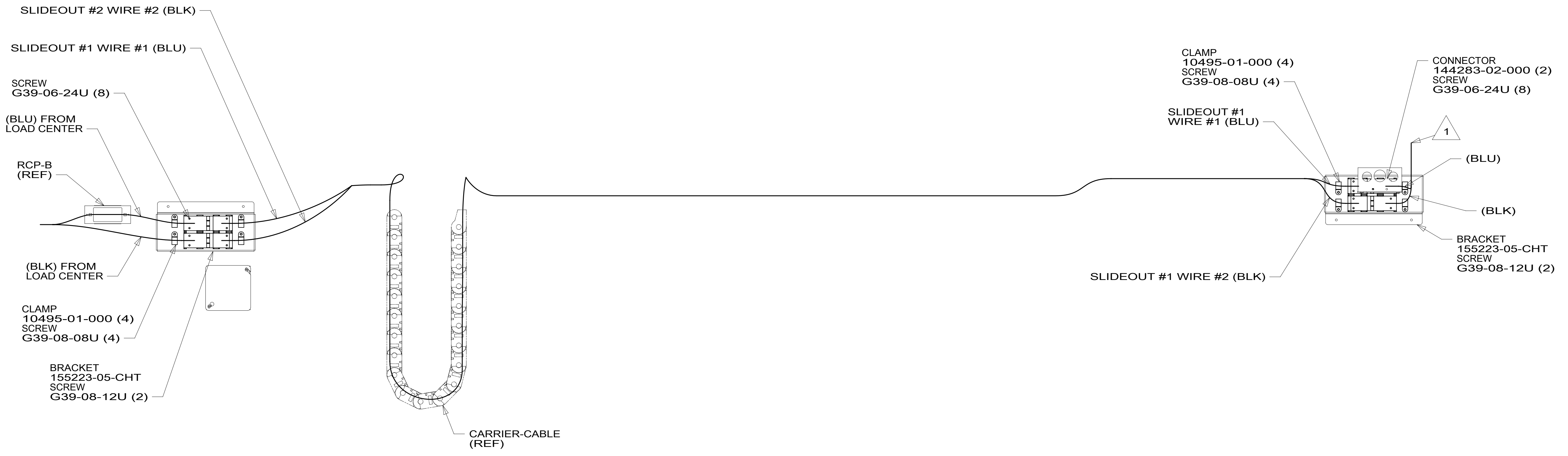
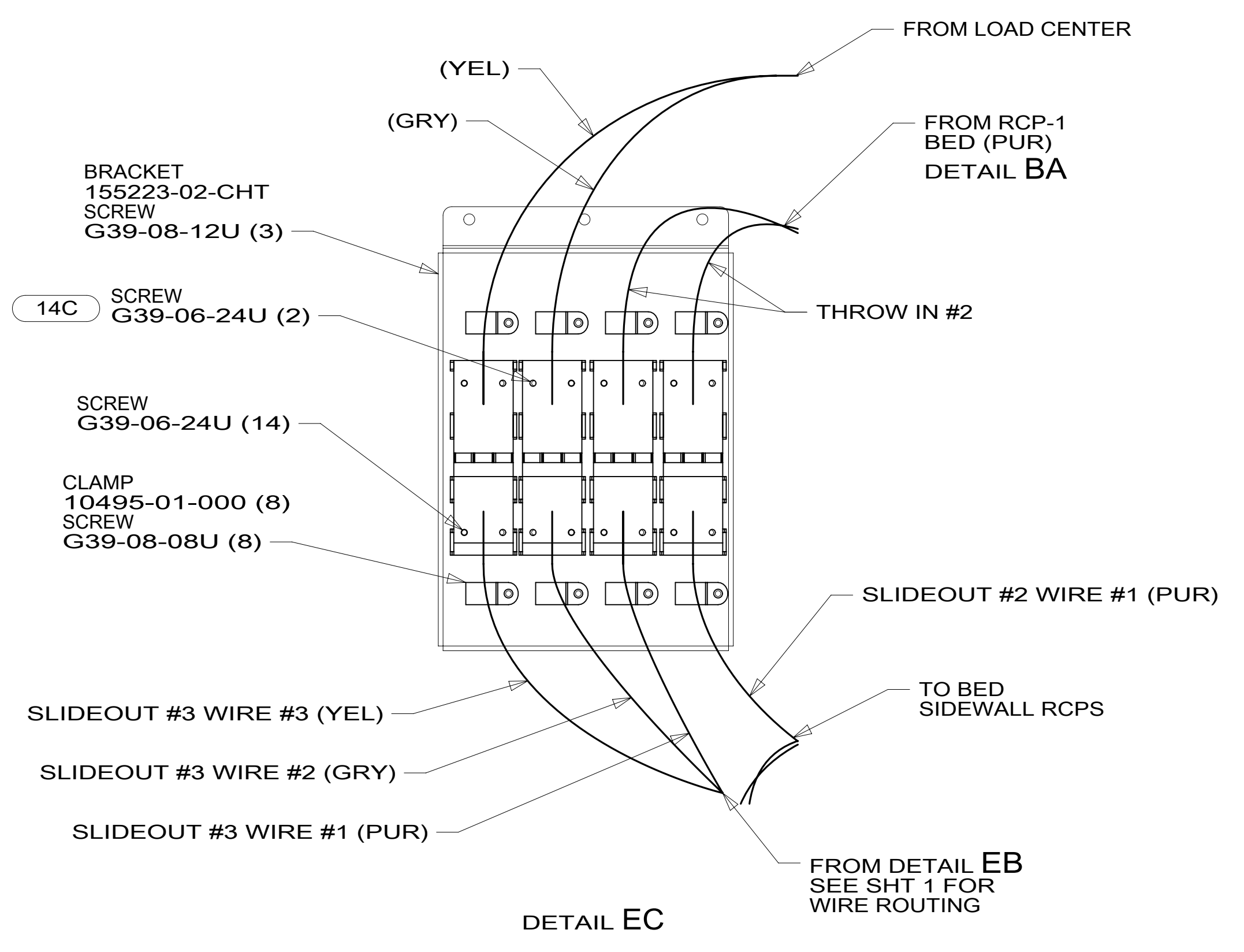
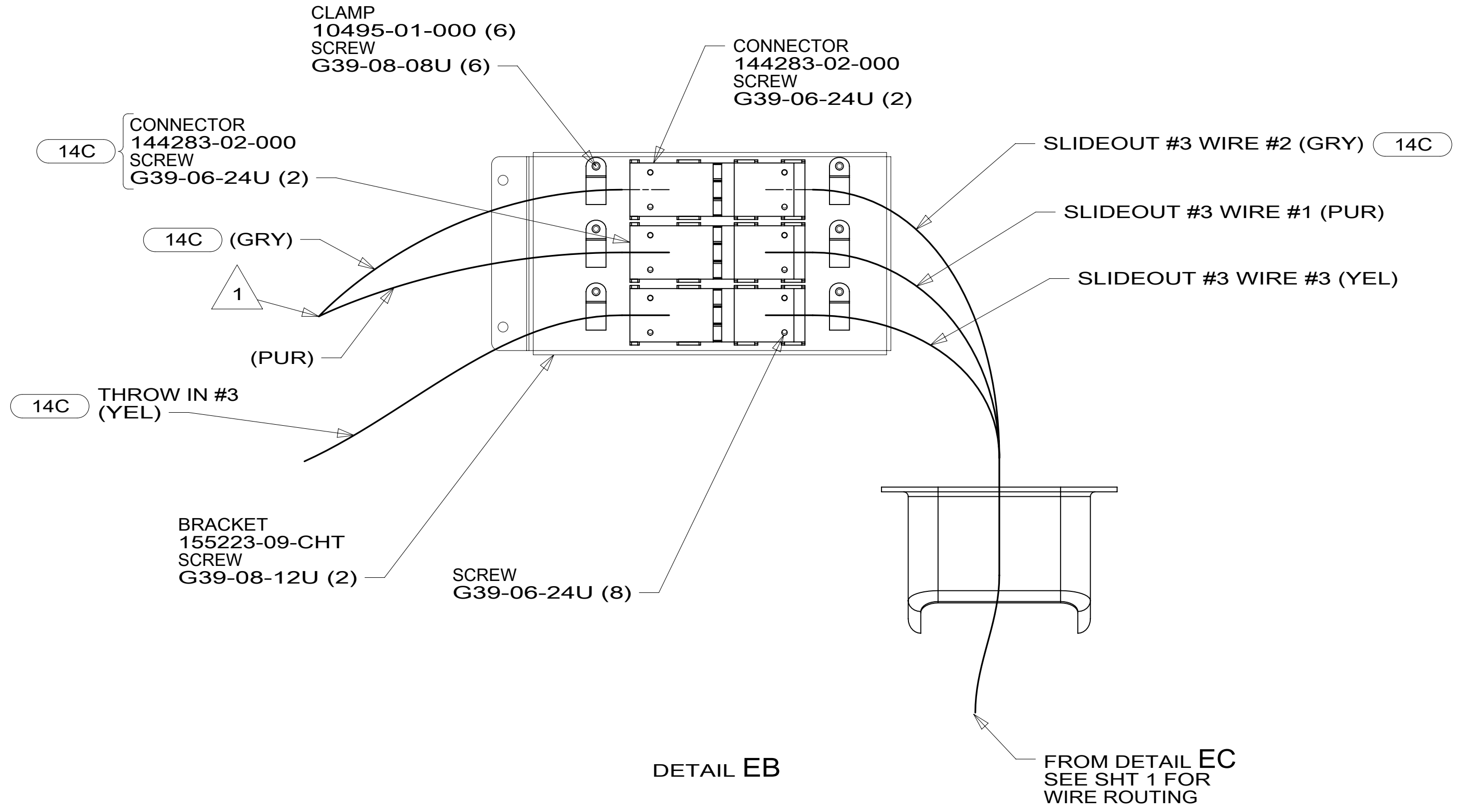
FOR ELECTRICAL TORQUE SPECIFICATIONS SEE DWG NO. 128783-01-000

FOR ELECTRICAL CALLOUTS SEE DWG NO. 121339-01-000

- 265 CODES/STANDARDS-CSA/CMVSS
- 1B1 CODES/STANDARDS USA

DESCRIPTION:	
<b>WIRING INSTL-BODY, 110V</b>	
SHEET:	ITEM/PART NO.:
4 OF 6	000210441 / 30209101000
REV	

8 7 6 5 4 3 2 1 20-Sep-2016



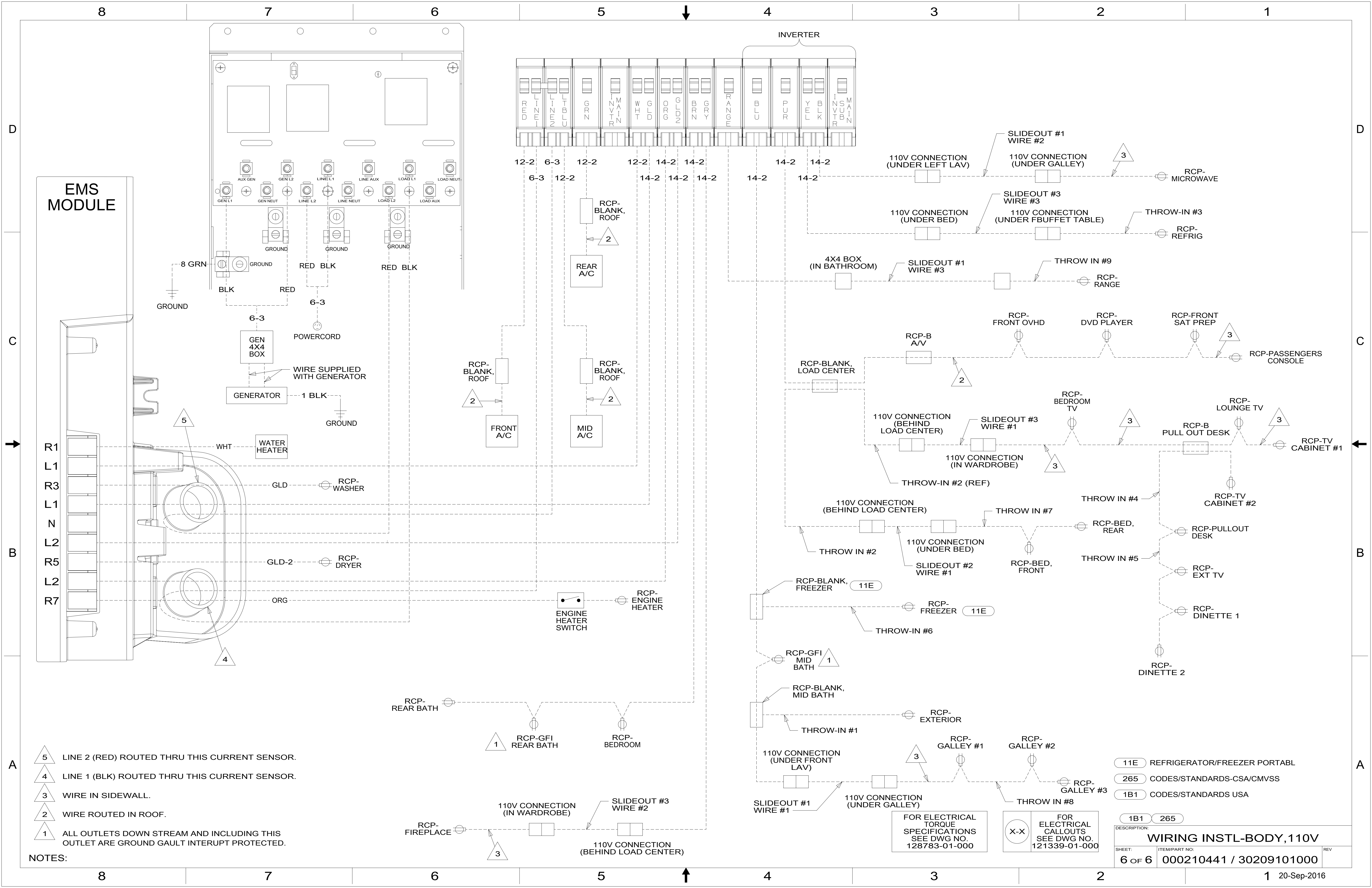
1 WIRE ROUTED IN SIDEWALL.

FOR ELECTRICAL TORQUE SPECIFICATIONS SEE DWG NO. 128783-01-000

FOR ELECTRICAL CALLOUTS SEE DWG NO. 121339-01-000

- 14C FIREPLACE-ELECTRIC
- 265 CODES/STANDARDS-CSA/CMVSS
- 1B1 CODES/STANDARDS USA

DESCRIPTION:	
<b>WIRING INSTL-BODY, 110V</b>	
SHEET:	ITEM/PART NO:
5 OF 6	000210441 / 30209101000
REV	
	1 20-Sep-2016



**EMS MODULE**

**INVERTER**

- NOTES:**
- 5 LINE 2 (RED) ROUTED THRU THIS CURRENT SENSOR.
  - 4 LINE 1 (BLK) ROUTED THRU THIS CURRENT SENSOR.
  - 3 WIRE IN SIDEWALL.
  - 2 WIRE ROUTED IN ROOF.
  - 1 ALL OUTLETS DOWN STREAM AND INCLUDING THIS OUTLET ARE GROUND GAULT INTERRUPT PROTECTED.

FOR ELECTRICAL TORQUE SPECIFICATIONS SEE DWG NO. 128783-01-000

FOR ELECTRICAL CALLOUTS SEE DWG NO. 121339-01-000

- 11E REFRIGERATOR/FREEZER PORTABL
- 265 CODES/STANDARDS-CSA/CMVSS
- 1B1 CODES/STANDARDS USA

DESCRIPTION: <b>WIRING INSTL-BODY, 110V</b>		
SHEET: 6 OF 6	ITEM/PART NO: 000210441 / 30209101000	REV
1 20-Sep-2016		