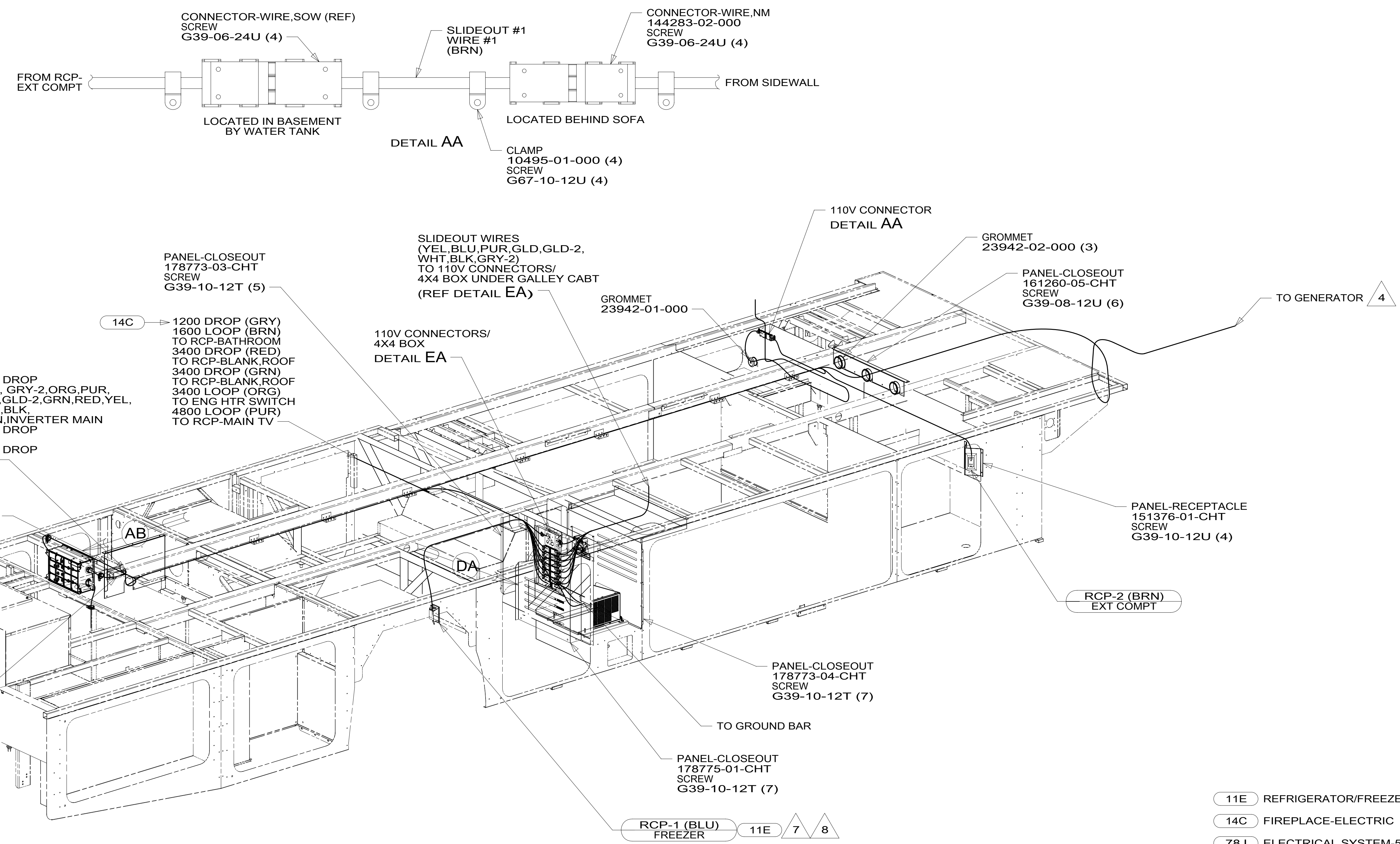
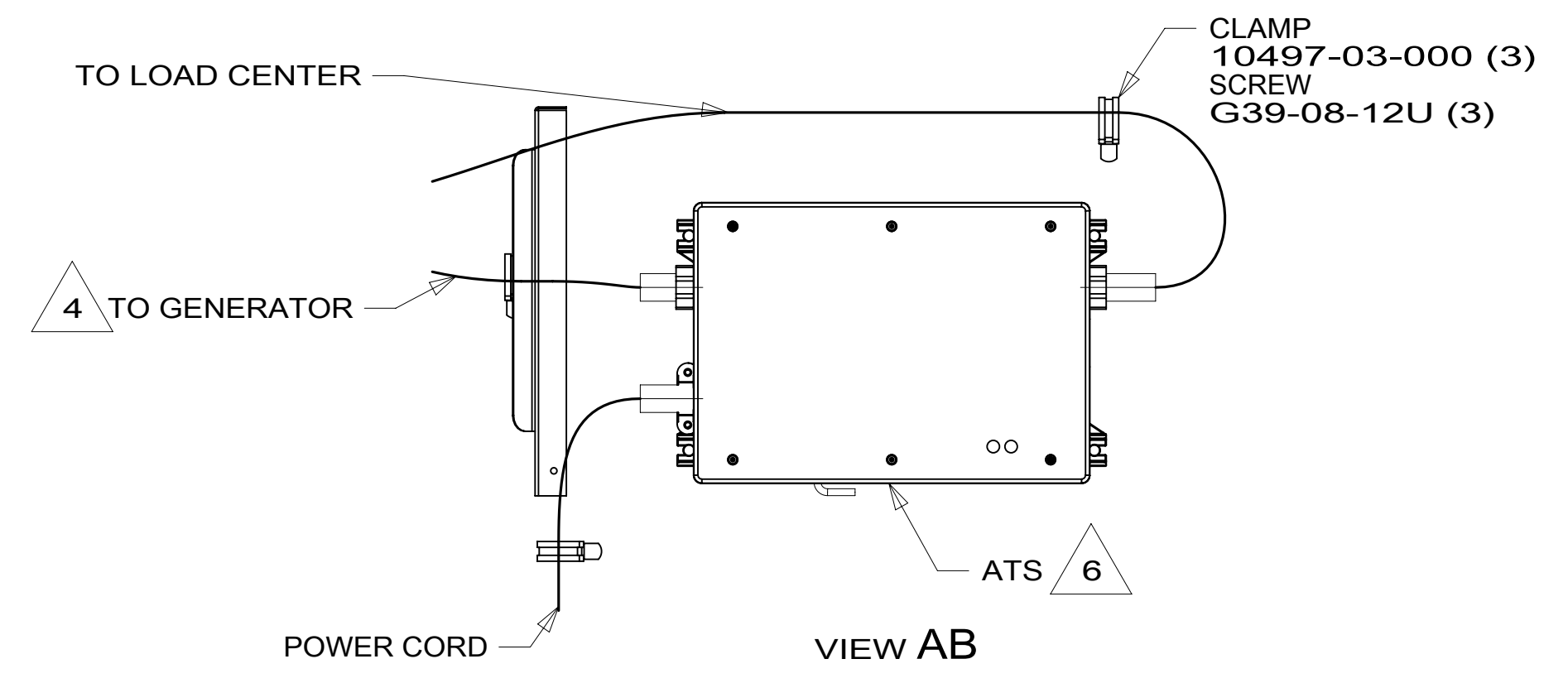


DRAWING NO.	FEATURES
302039-01	-----
302039-12	1B1 78J
302039-16	265 78J



- 8 SEE WIRING INSTL-BODY, 12V FOR ADDITIONAL INFORMATION.
- 7 COIL EXCESS WIRE HERE WITHOUT 11E
- 6 SEE LOAD CENTER/ATS ASM FOR ADDITIONAL INFORMATION.
- 5 TO ABOVE FLOOR.
- 4 SEE GENERATOR INSTL FOR ADDITIONAL INFORMATION.
3. WIRES THAT REST ON WIRE TRAYS ARE TO BE TIED DOWN WITH WIRE TIE 8343-04-000.
2. CLAMP TO FLOOR SUPPORT TUBES AS NECESSARY WITH CLAMP 10497-01-000.
1. AT MINIMUM ALL WIRES TO BE SUPPORTED AND SECURED PER CODE REQUIREMENTS. USE CLAMP 10495 OR 10497 OR WIRE TIE 8343 OR 108046 AND SCREW G67-XX-XXX OR G56-XX-XXX AS APPROPRIATE FOR INSTALLATION.



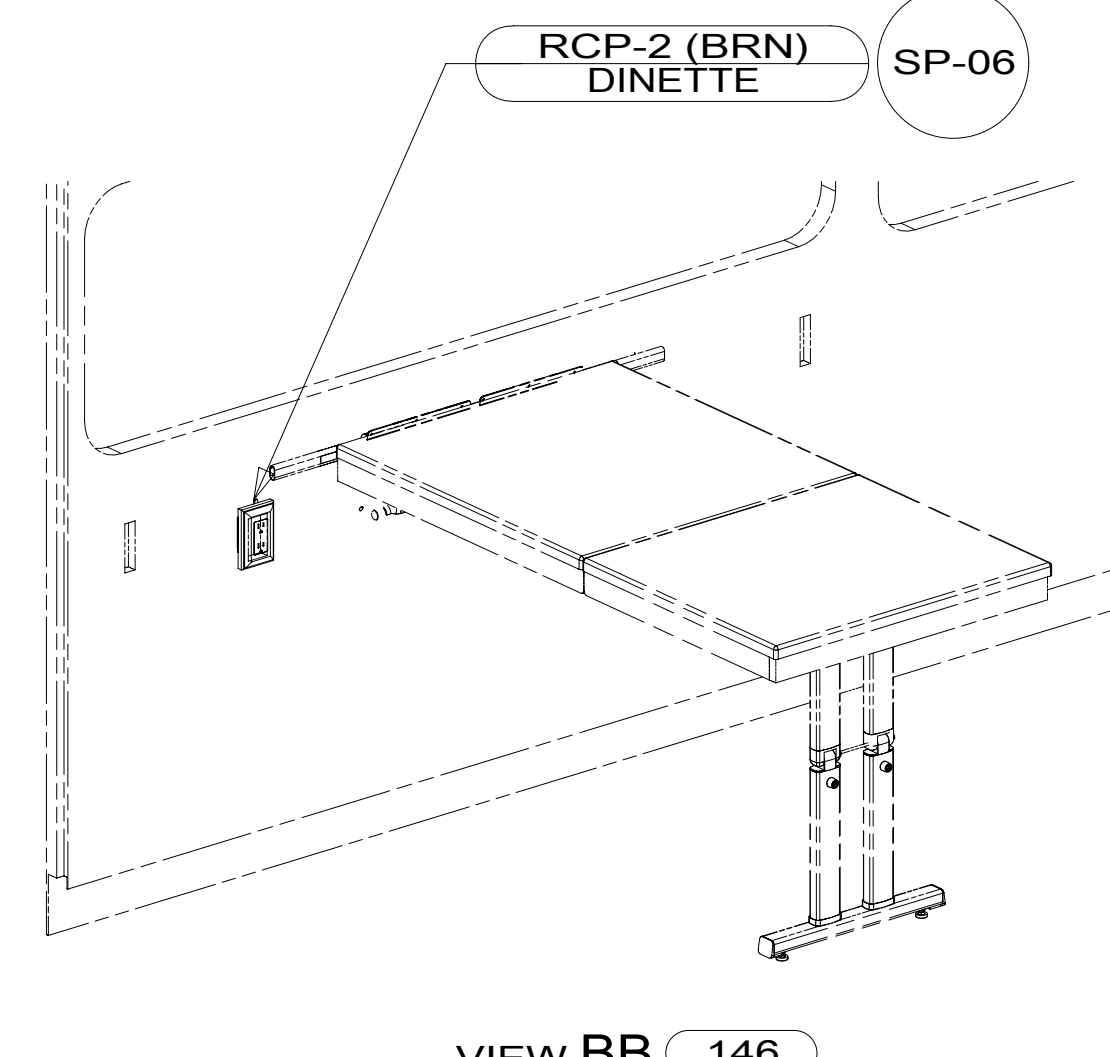
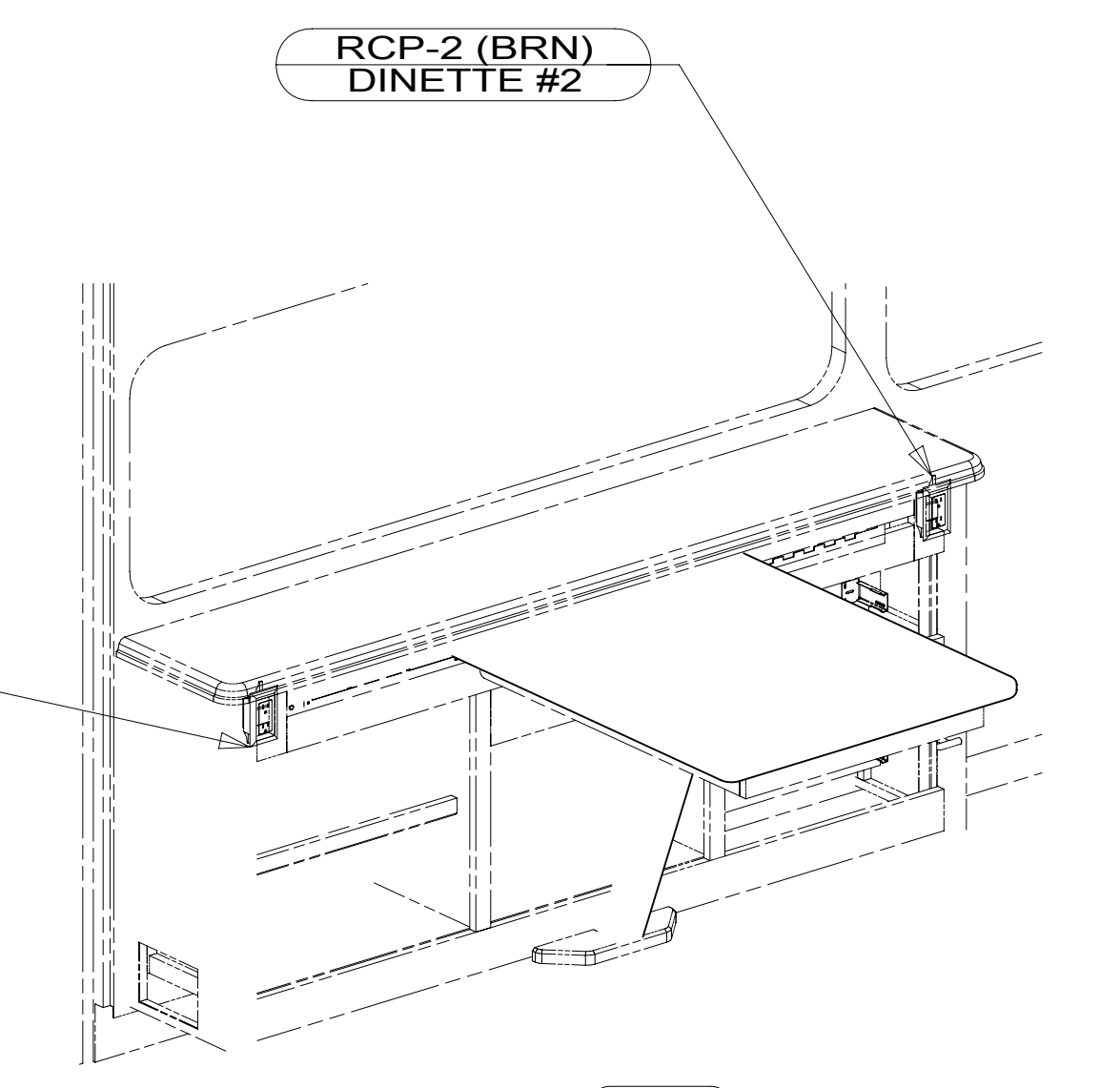
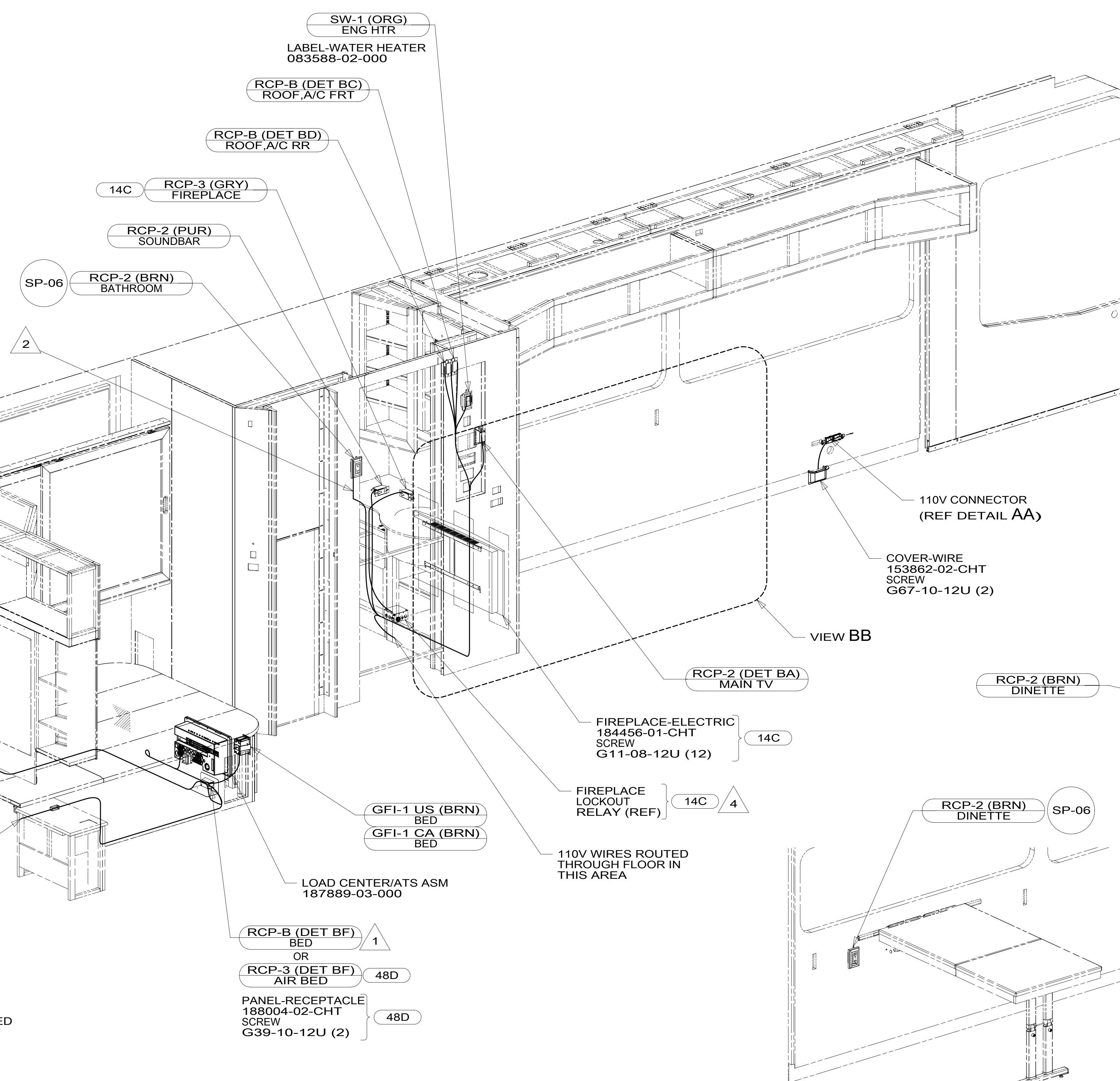
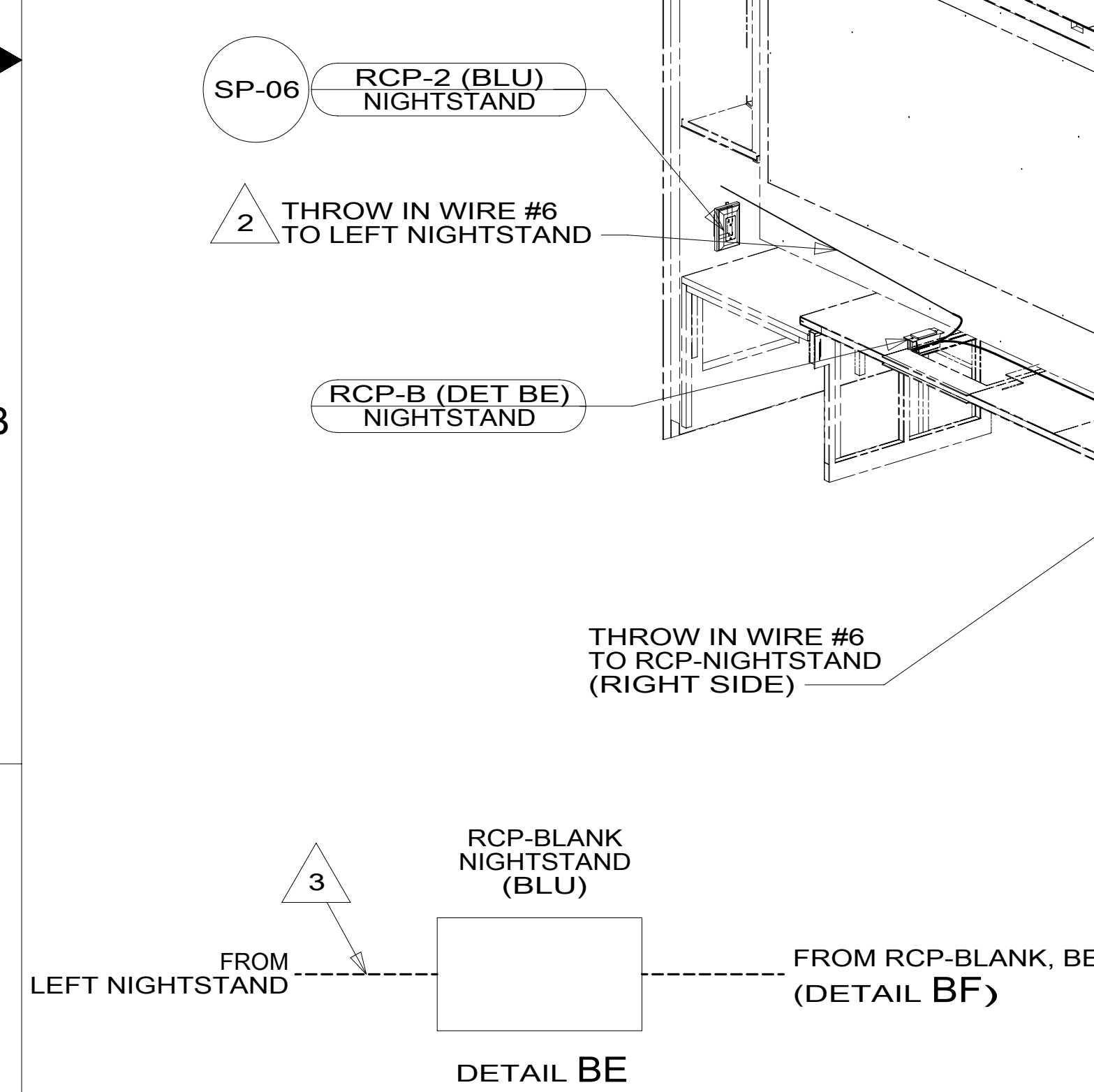
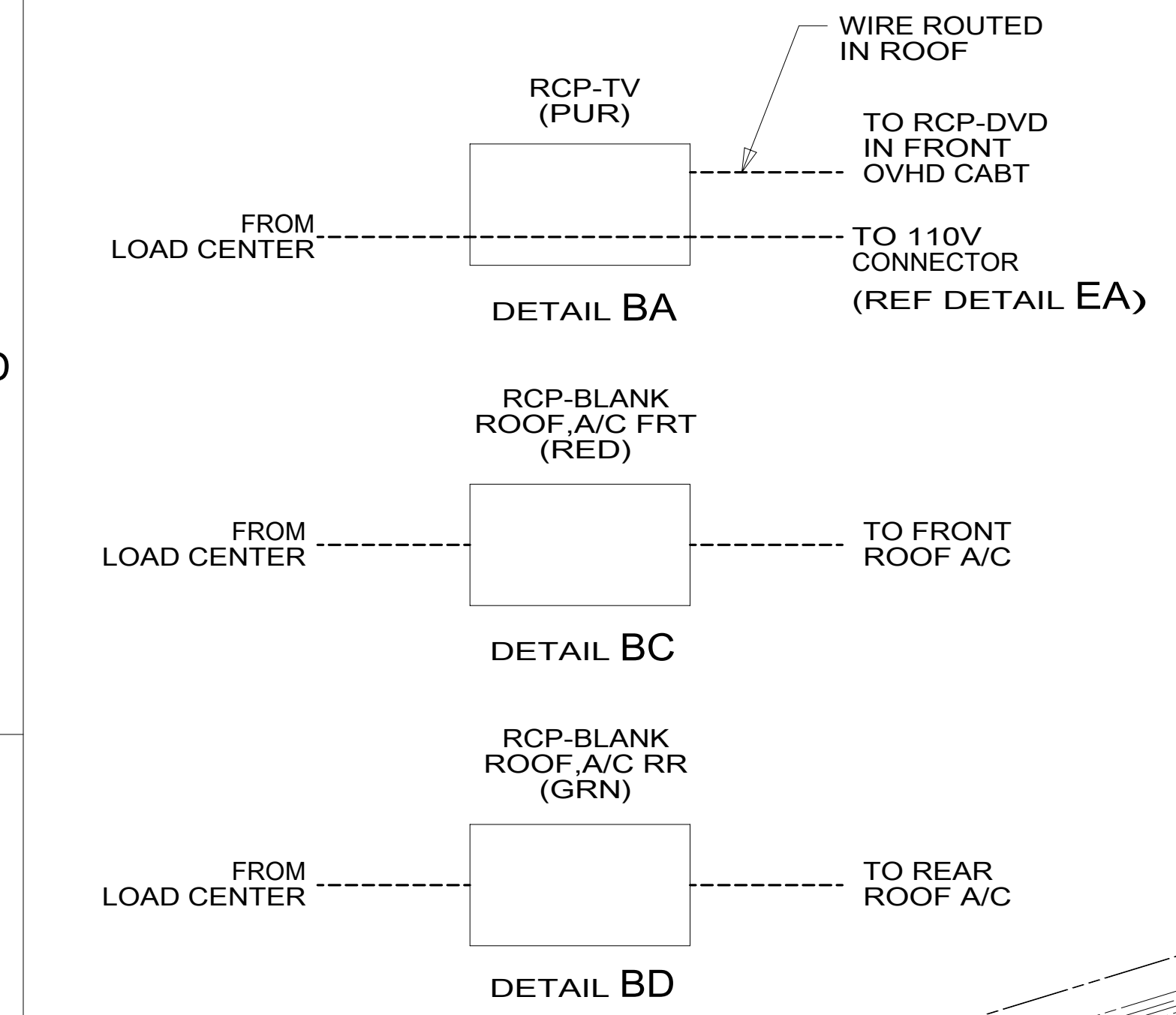
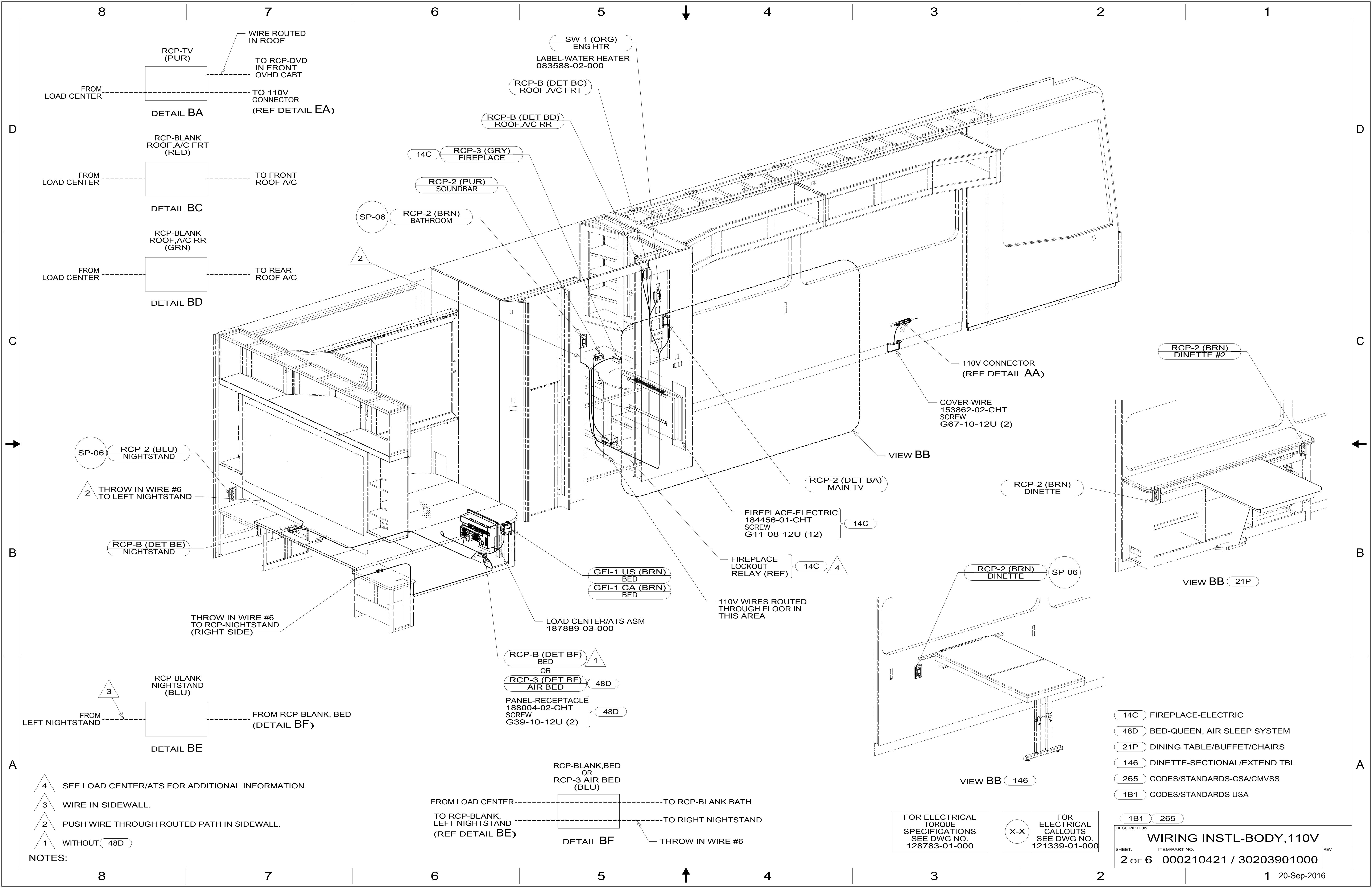
- 11E REFRIGERATOR/FREEZER PORTABL
- 14C FIREPLACE-ELECTRIC
- 78J ELECTRICAL SYSTEM-50 AMP
- 265 CODES/STANDARDS-CSA/CMVSS
- 1B1 CODES/STANDARDS USA

WINNEBAGO
COPYRIGHT 2016 WINNEBAGO INDUSTRIES, INC.

DSNR:	ALL DIMENSIONS ARE IN MILLIMETERS
DIFTR:	
UNSPECIFIED TOLERANCES:	MATERIAL:
WHOLE DIM (X) :	3
ONE-PLACE (X.X) :	1.5
TWO-PLACE (X.XX) :	0.50
ANGLE :	1°
REFER TO ES0018 FOR FASTENER TIGHTENING GUIDELINES	WEIGHT: (LBS) FIRST USED:
DESCRIPTION: WIRING INSTL-BODY, 110V	
SHEET: 1 OF 6	ITEM/PART NO: 000210421 / 30203901000
REF:	1 20-Sep-2016

FOR ELECTRICAL TORQUE SPECIFICATIONS SEE DWG NO. 128783-01-000

FOR ELECTRICAL CALLOUTS SEE DWG NO. 121339-01-000



NOTES:

4 SEE LOAD CENTER/ATS FOR ADDITIONAL INFORMATION.

3 WIRE IN SIDEWALL.

2 PUSH WIRE THROUGH ROUTED PATH IN SIDEWALL.

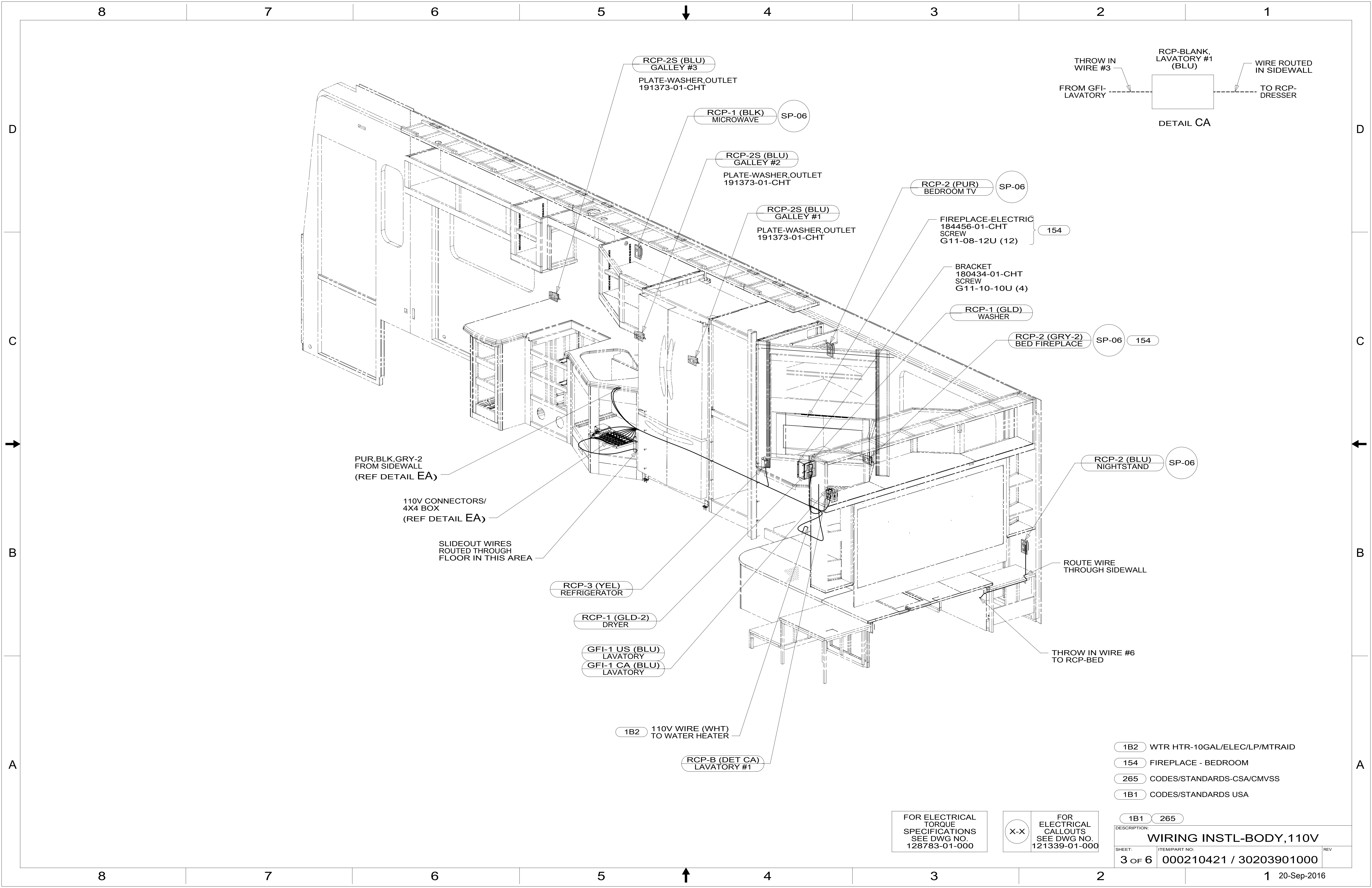
1 WITHOUT 48D

- 14C FIREPLACE-ELECTRIC
- 48D BED-QUEEN, AIR SLEEP SYSTEM
- 21P DINING TABLE/BUFFET/CHAIRS
- 146 DINETTE-SECTIONAL/EXTEND TBL
- 265 CODES/STANDARDS-CSA/CMVSS
- 1B1 CODES/STANDARDS USA

FOR ELECTRICAL TORQUE SPECIFICATIONS SEE DWG NO. 128783-01-000

FOR ELECTRICAL CALLOUTS SEE DWG NO. 121339-01-000

DESCRIPTION: WIRING INSTL-BODY, 110V		
SHEET: 2 OF 6	ITEM/PART NO.: 000210421 / 30203901000	REV



RCP-2S (BLU)
GALLEY #3
PLATE-WASHER,OUTLET
191373-01-CHT

RCP-1 (BLK)
MICROWAVE
SP-06

RCP-2S (BLU)
GALLEY #2
PLATE-WASHER,OUTLET
191373-01-CHT

RCP-2S (BLU)
GALLEY #1
PLATE-WASHER,OUTLET
191373-01-CHT

RCP-2 (PUR)
BEDROOM TV
SP-06

FIREPLACE-ELECTRIC
184456-01-CHT
SCREW
G11-08-12U (12) 154

BRACKET
180434-01-CHT
SCREW
G11-10-10U (4)

RCP-1 (GLD)
WASHER

RCP-2 (GRY-2)
BED FIREPLACE
SP-06 154

RCP-2 (BLU)
NIGHTSTAND
SP-06

PUR,BLK,GRY-2
FROM SIDEWALL
(REF DETAIL EA)

110V CONNECTORS/
4X4 BOX
(REF DETAIL EA)

SLIDEOUT WIRES
ROUTED THROUGH
FLOOR IN THIS AREA

RCP-3 (YEL)
REFRIGERATOR

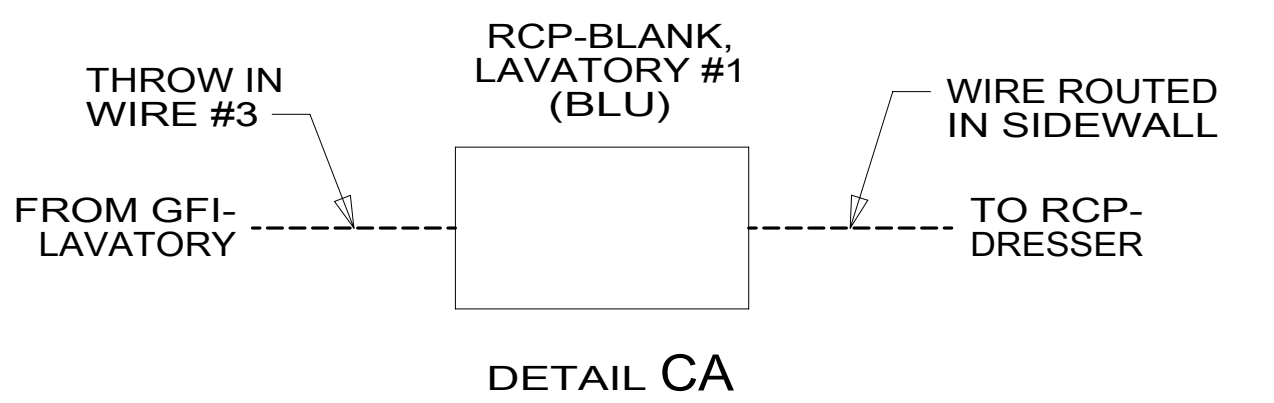
RCP-1 (GLD-2)
DRYER

GFI-1 US (BLU)
LAVATORY

GFI-1 CA (BLU)
LAVATORY

1B2 110V WIRE (WHT)
TO WATER HEATER

RCP-B (DET CA)
LAVATORY #1



ROUTE WIRE
THROUGH SIDEWALL

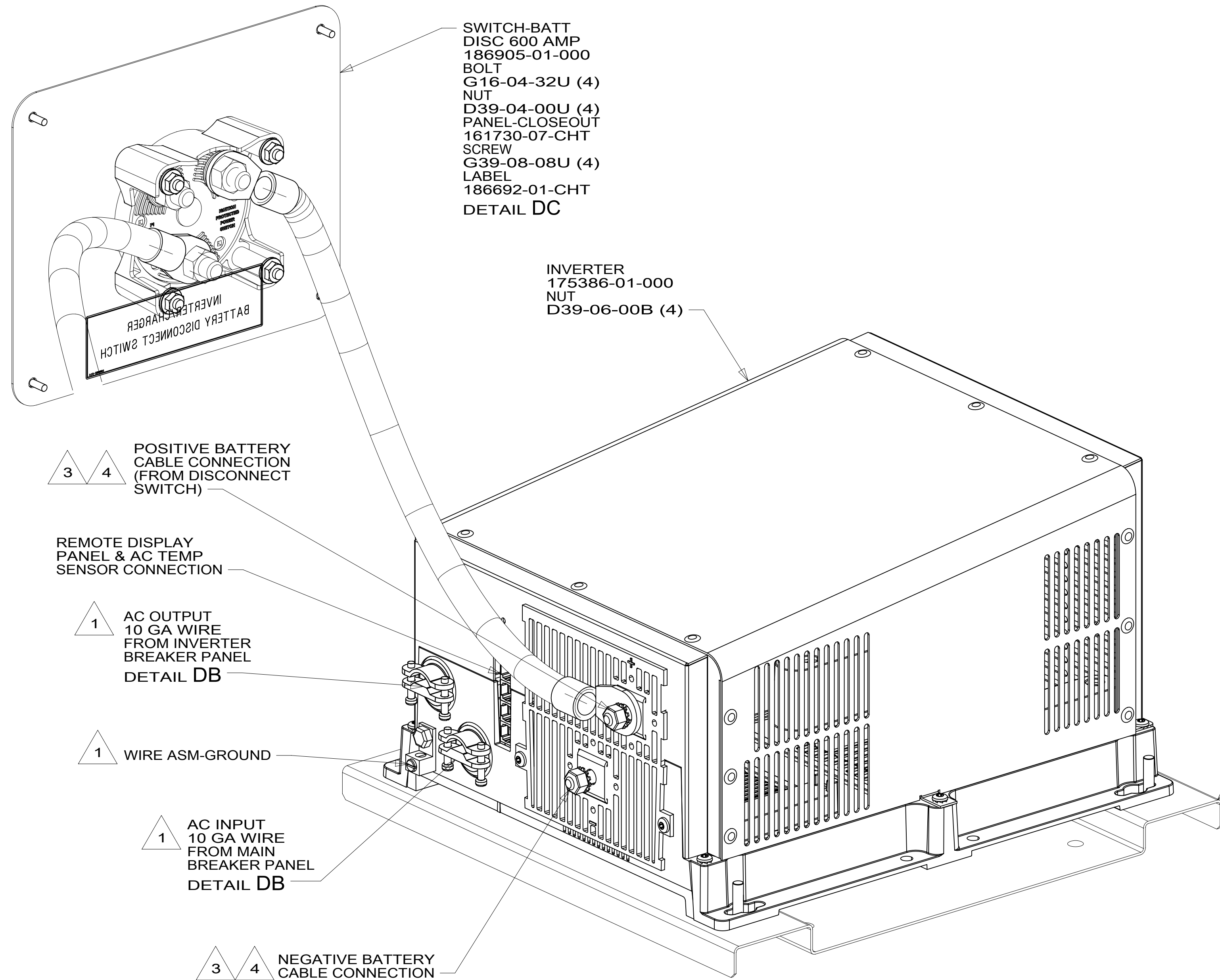
THROW IN WIRE #6
TO RCP-BED

- 1B2 WTR HTR-10GAL/ELEC/LP/MTRAIID
- 154 FIREPLACE - BEDROOM
- 265 CODES/STANDARDS-CSA/CMVSS
- 1B1 CODES/STANDARDS USA

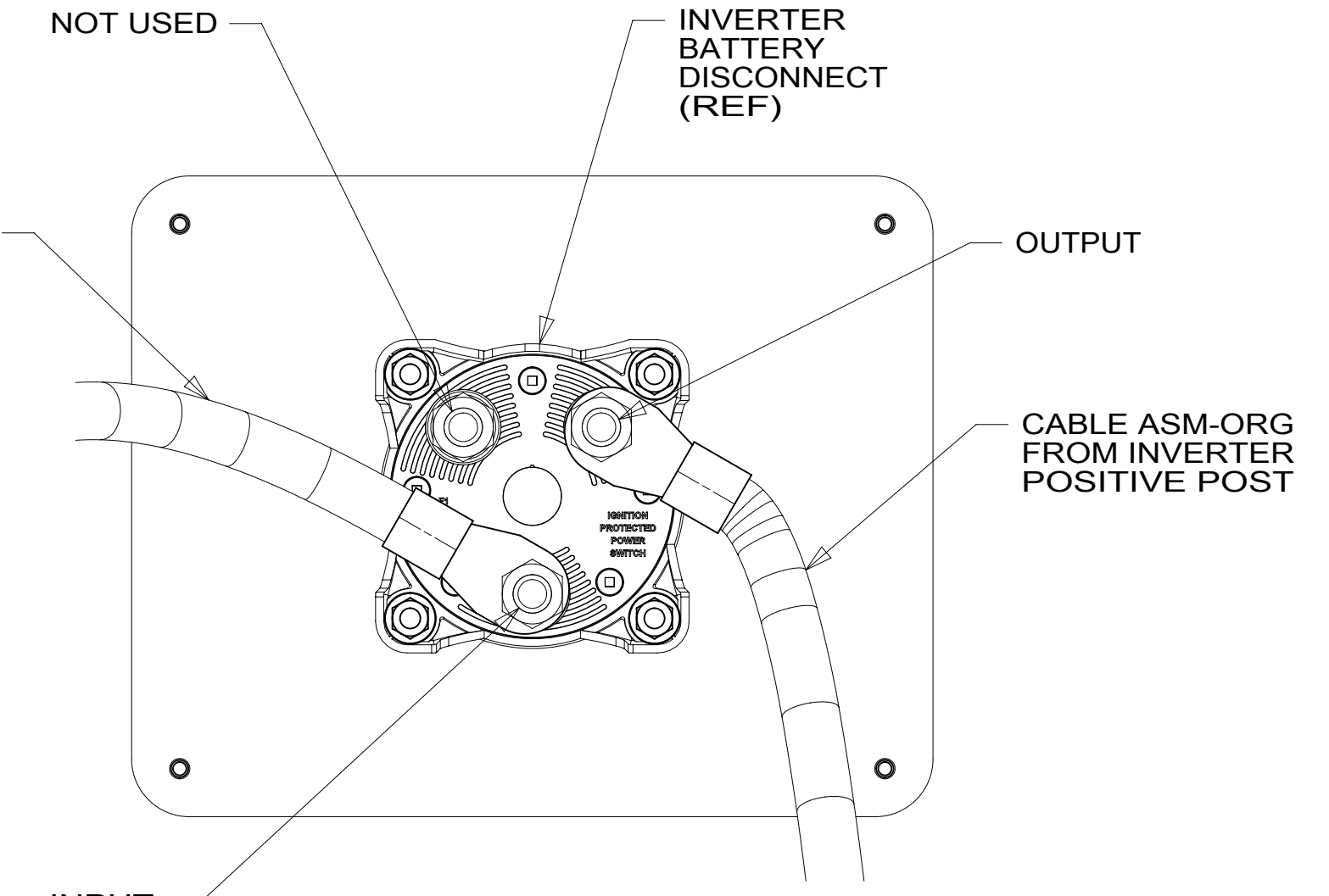
FOR ELECTRICAL
TORQUE
SPECIFICATIONS
SEE DWG NO.
128783-01-000

FOR
ELECTRICAL
CALLOUTS
SEE DWG NO.
121339-01-000

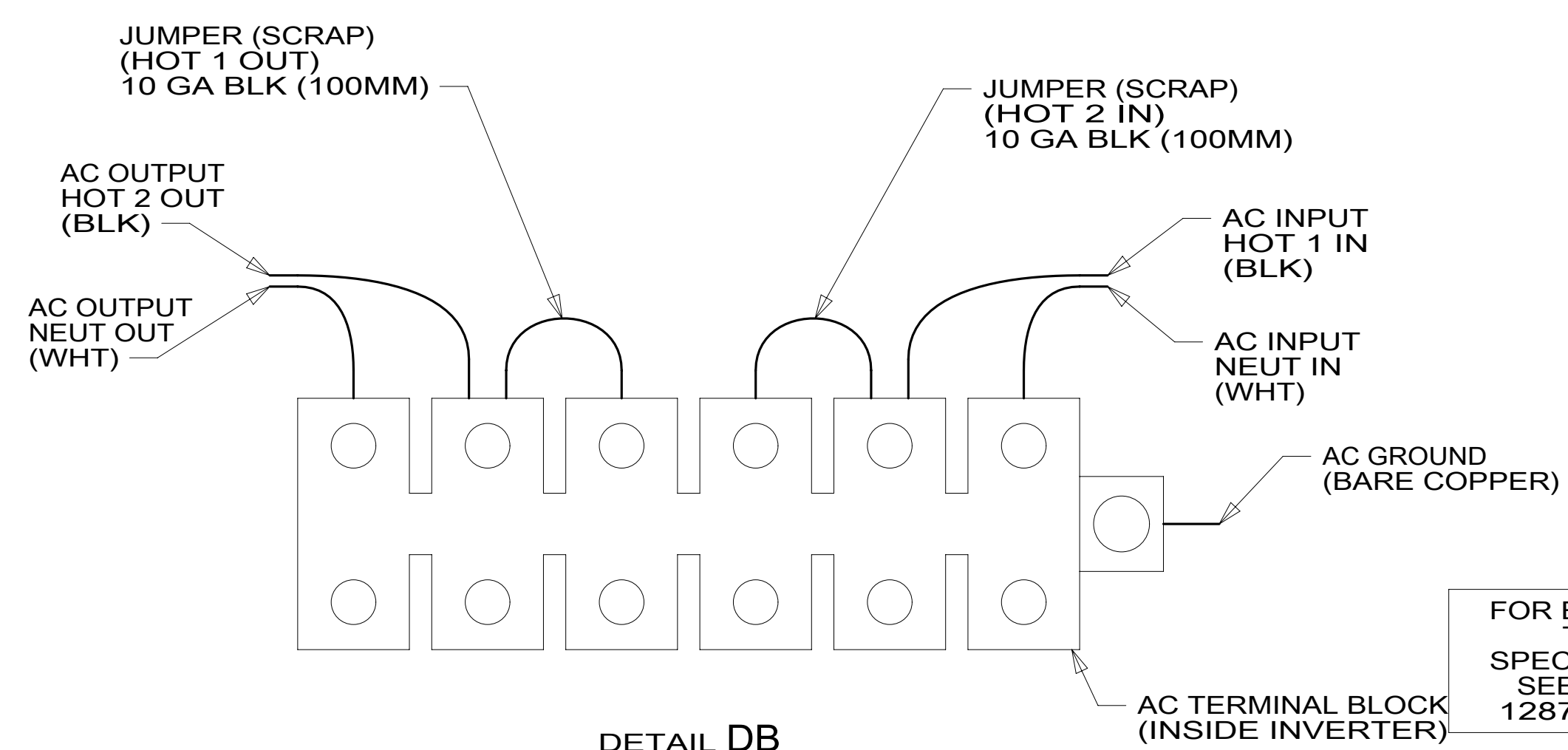
DESCRIPTION:		1B1 265	
WIRING INSTL-BODY, 110V			
SHEET:	ITEM/PART NO.:	REV	
3 OF 6	000210421 / 30203901000		



VIEW DA



DETAIL DC



DETAIL DB

- NOTES:
- 4 DO NOT USE POWER/AIR TOOL TO INSTALL NUT. TORQUE TO 10-12 FT LBS.
 - 3 SEE WIRING INSTL-CHASSIS FOR ADDITIONAL INFORMATION.
 - 2 BRACKET IS LOCATED BY HOLES ON PANEL.
 - 1 SEE LOAD CENTER/ATS ASM FOR ADDITIONAL INFORMATION.

265 CODES/STANDARDS-CSA/CMVSS
 1B1 CODES/STANDARDS USA

FOR ELECTRICAL TORQUE SPECIFICATIONS SEE DWG NO. 128783-01-000

FOR ELECTRICAL CALLOUTS SEE DWG NO. 121339-01-000

DESCRIPTION:	
WIRING INSTL-BODY, 110V	
SHEET:	ITEM/PART NO.:
4 OF 6	000210421 / 30203901000
REV	

