

FOR ELECTRICAL TORQUE SPECIFICATIONS SEE DWG NO. 128783-01-000

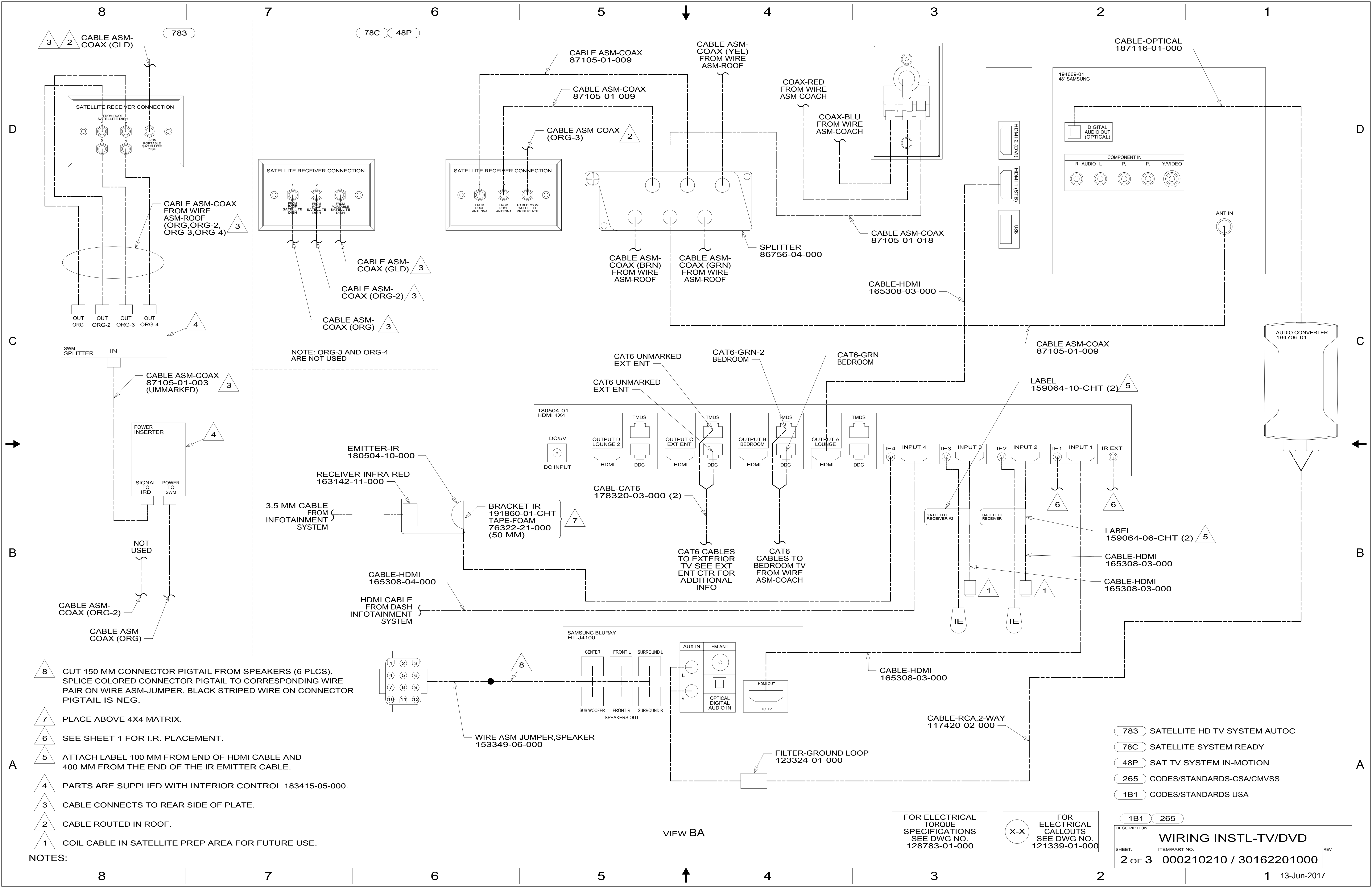
FOR ELECTRICAL CALLOUTS SEE DWG NO. 121339-01-000

- 783 SATELLITE HD TV SYSTEM AUTOC
- 25M HOME THEATER SYSTEM, BLU-RAY
- 48P SAT TV SYSTEM IN-MOTION
- 78C SATELLITE SYSTEM READY
- 265 CODES/STANDARDS-CSA/CMVSS
- 1B1 CODES/STANDARDS USA

WINNEBAGO
COPYRIGHT 2016 WINNEBAGO INDUSTRIES, INC.

DSNR:	ALL DIMENSIONS ARE IN MILLIMETERS
DFFR:	MATERIAL:
UNSPECIFIED TOLERANCES:	
WHOLE DIM (X) :	3
ONE-PLACE (X.X) :	1.5
TWO-PLACE (X.XX) :	0.50
ANGLE :	1°
REFER TO ES0018 FOR FASTENER TIGHTENING GUIDELINES	WEIGHT: (LBS) FIRST USED: 16 J35P
DESCRIPTION: WIRING INSTL-TV/DVD	
SHEET: 1 OF 3	ITEM/PART NO: 000210210 / 30162201000
REF:	1 13-Jun-2017

- NOTES:
- 6 CLEAN & APPLY ADHESIVE PROMOTER 87211-01-000 TO MOUNTING SURFACE.
 - 5 PLACE I.R. RECEIVER ON TOP OF 4X4 MATRIX FACING OPENING.
 - 4 INTERIOR CONTROL CONNECTS TO SATELLITE DATA CABLE. SEE ROOF ASM FOR ADDITIONAL INFORMATION.
 - 3 PLACE I.R.E. IN FRONT OF THE BLU-RAY PLAYER AS SHOWN. (150 MM FROM RIGHT SIDE)
 - 2 SET DVD PLAYER FOR AUDIO ON HDMI AND MAX VIDEO OUTPUT TO 1080i.
 - 1 SEE ROOF ASM FOR ADDITIONAL INFORMATION.



- NOTES:**
- 8 CUT 150 MM CONNECTOR PIGTAIL FROM SPEAKERS (6 PLCS). SPLICE COLORED CONNECTOR PIGTAIL TO CORRESPONDING WIRE PAIR ON WIRE JUMPER. BLACK STRIPED WIRE ON CONNECTOR PIGTAIL IS NEG.
 - 7 PLACE ABOVE 4X4 MATRIX.
 - 6 SEE SHEET 1 FOR I.R. PLACEMENT.
 - 5 ATTACH LABEL 100 MM FROM END OF HDMI CABLE AND 400 MM FROM THE END OF THE IR EMITTER CABLE.
 - 4 PARTS ARE SUPPLIED WITH INTERIOR CONTROL 183415-05-000.
 - 3 CABLE CONNECTS TO REAR SIDE OF PLATE.
 - 2 CABLE ROUTED IN ROOF.
 - 1 COIL CABLE IN SATELLITE PREP AREA FOR FUTURE USE.

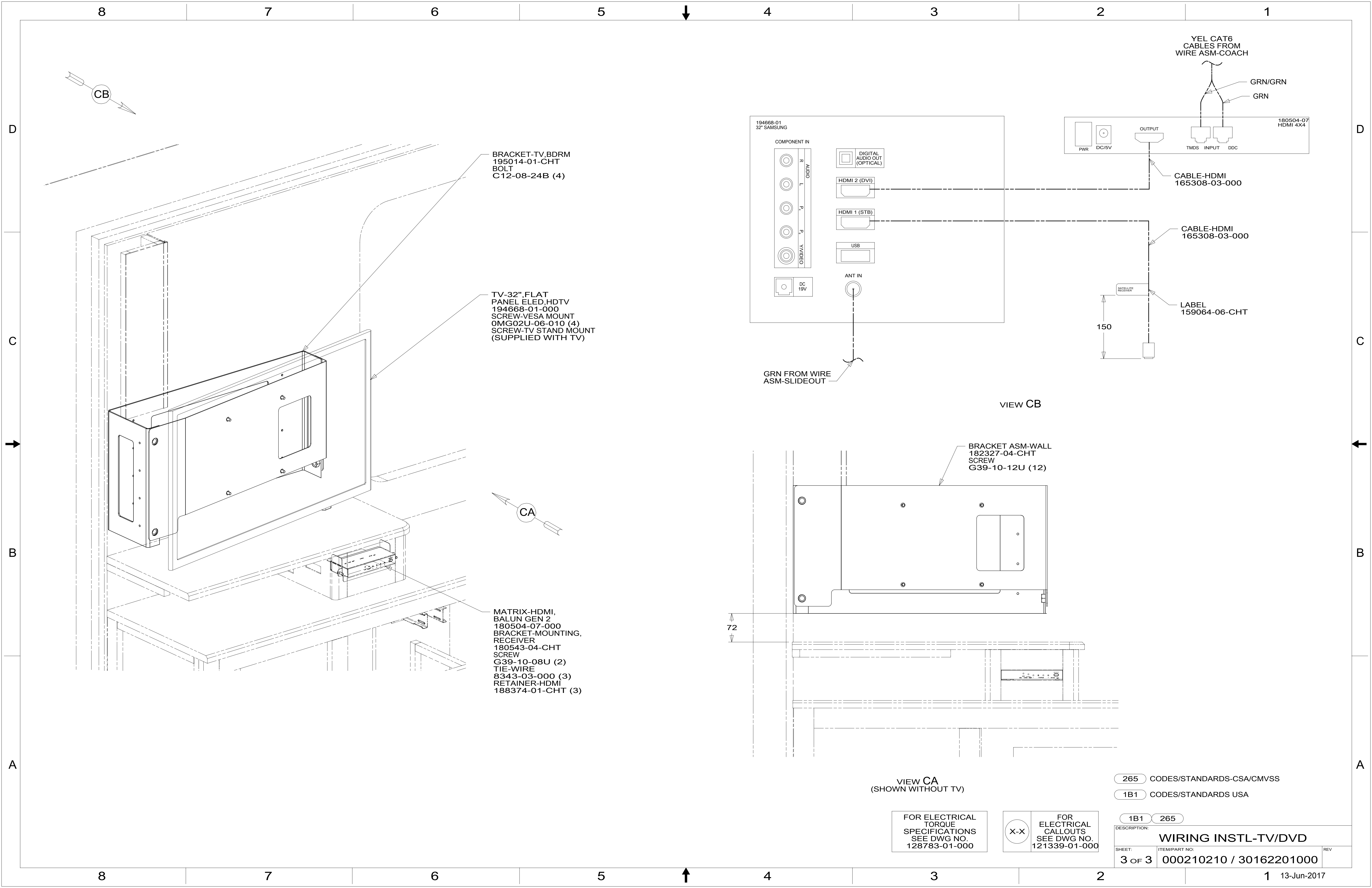
- 783 SATELLITE HD TV SYSTEM AUTOC
- 78C SATELLITE SYSTEM READY
- 48P SAT TV SYSTEM IN-MOTION
- 265 CODES/STANDARDS-CSA/CMVSS
- 1B1 CODES/STANDARDS USA

FOR ELECTRICAL TORQUE SPECIFICATIONS SEE DWG NO. 128783-01-000

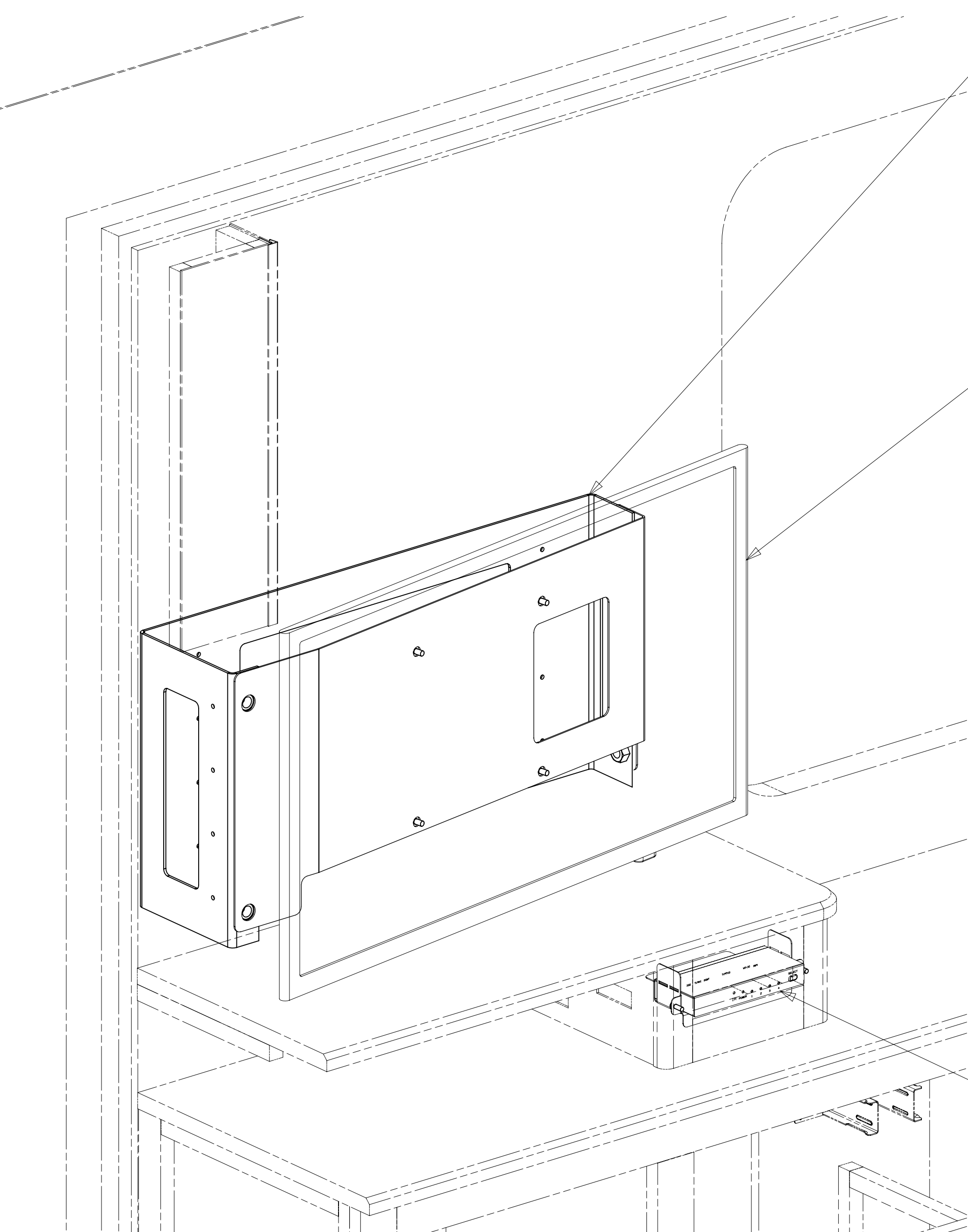
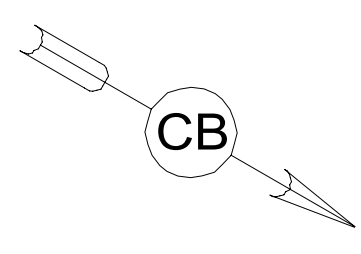
FOR ELECTRICAL CALLOUTS SEE DWG NO. 121339-01-000

1B1	265
DESCRIPTION:	
WIRING INSTL-TV/DVD	
SHEET:	ITEM/PART NO:
2 OF 3	000210210 / 30162201000
REV	
13-Jun-2017	

VIEW BA



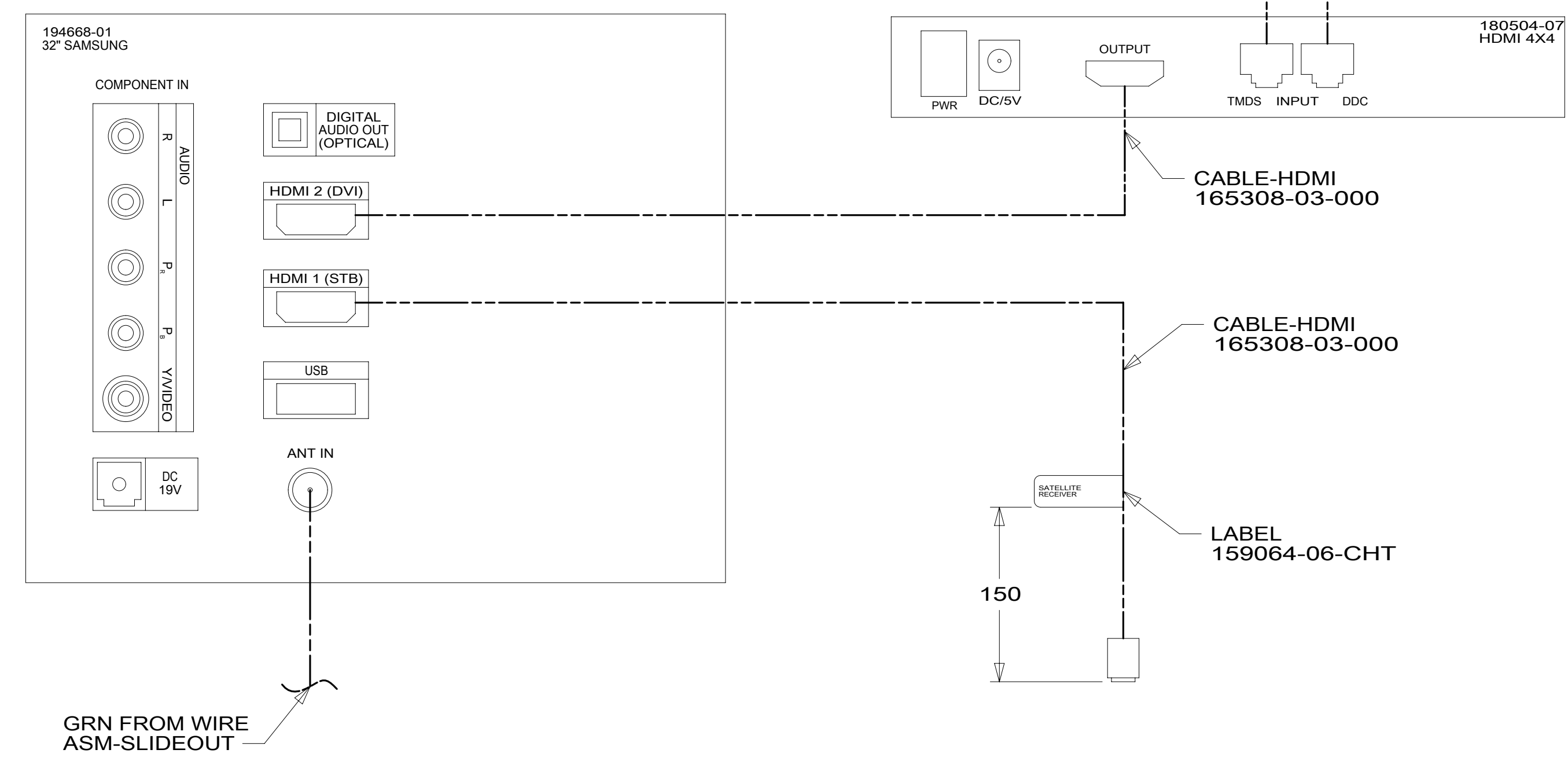
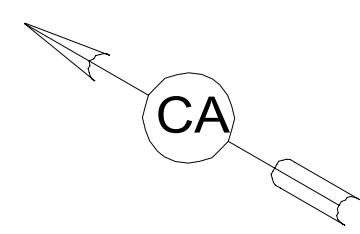
8 7 6 5 4 3 2 1



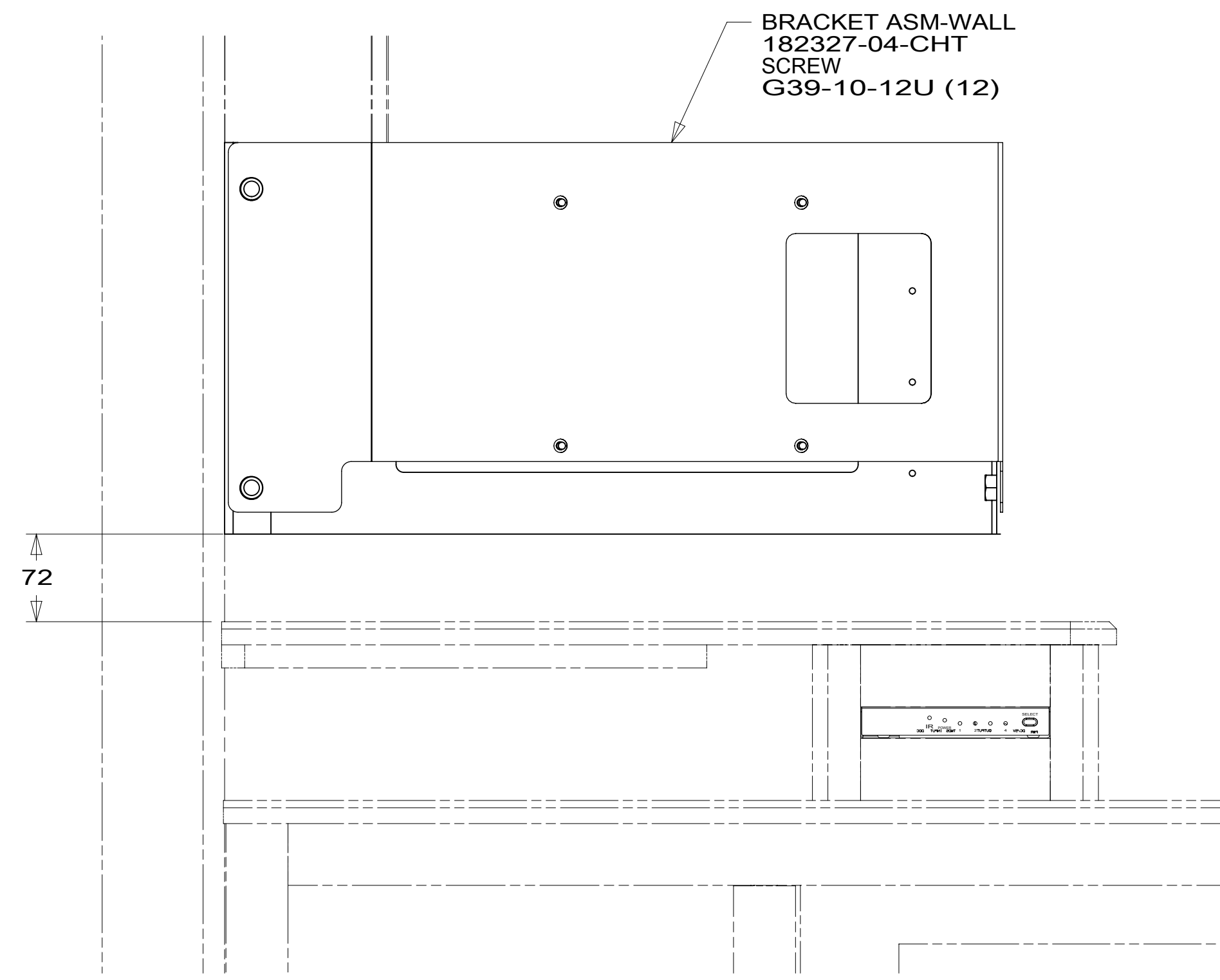
BRACKET-TV,BDRM
195014-01-CHT
BOLT
C12-08-24B (4)

TV-32".FLAT
PANEL ELED,HDTV
194668-01-000
SCREW-VESA MOUNT
0MG02U-06-010 (4)
SCREW-TV STAND MOUNT
(SUPPLIED WITH TV)

MATRIX-HDMI,
BALUN GEN 2
180504-07-000
BRACKET-MOUNTING,
RECEIVER
180543-04-CHT
SCREW
G39-10-08U (2)
TIE-WIRE
8343-03-000 (3)
RETAINER-HDMI
188374-01-CHT (3)



VIEW CB



VIEW CA
(SHOWN WITHOUT TV)

FOR ELECTRICAL
TORQUE
SPECIFICATIONS
SEE DWG NO.
128783-01-000

FOR
ELECTRICAL
CALLOUTS
SEE DWG NO.
121339-01-000

265 CODES/STANDARDS-CSA/CMVSS
1B1 CODES/STANDARDS USA

DESCRIPTION:		1B1	265
WIRING INSTL-TV/DVD			
SHEET:	ITEM/PART NO.:	REV	
3 OF 3	000210210 / 30162201000		

8 7 6 5 4 3 2 1 13-Jun-2017