

- 8 SECURE SO WIRES DO NOT CONTACT EXHAUST.
  - 7 SUPPLIED WITH CHASSIS.
  - 6 SEE WIRING INSTL-FRONT END FOR ADDITIONAL INFORMATION.
  - 5 SEE BATTERY INSTL FOR ADDITIONAL INFORMATION.
  - 4 CLAMP 83610-03-000, SCREW G39-08-12U.
  - 3 CLAMP 83610-01-000, SCREW G39-08-12U.
  - 2 COVER SHARP EDGES WHERE WIRE CROSSES FRAME RAILS.
1. SECURE CONDUIT 41953-09, -10, -11, -13, AND -14 OVER ALL WIRES IN CONTACT WITH SHARP EDGES.

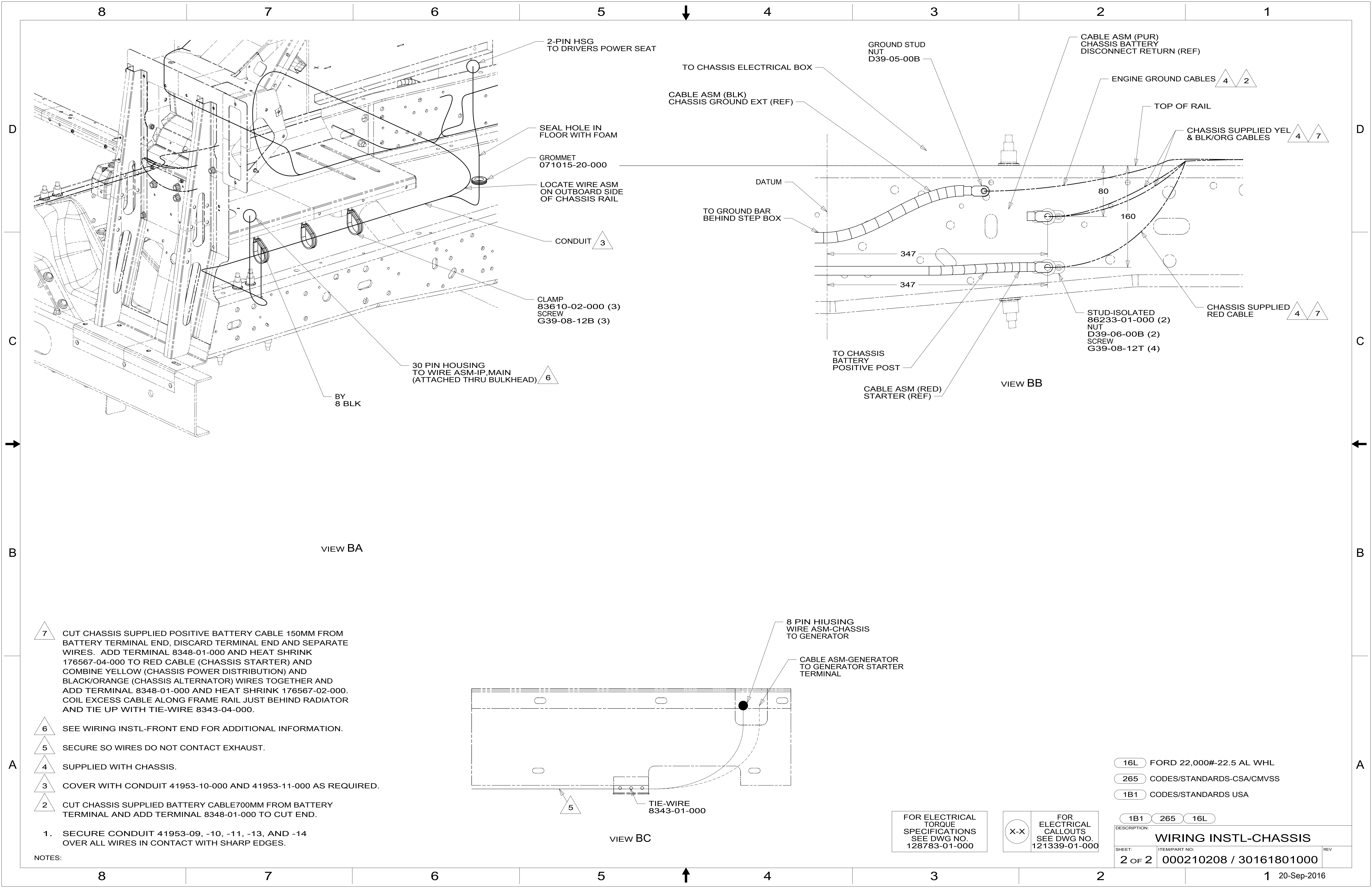
NOTES:

FOR ELECTRICAL TORQUE SPECIFICATIONS SEE DWG NO. 128783-01-000

FOR ELECTRICAL CALLOUTS SEE DWG NO. 121339-01-000

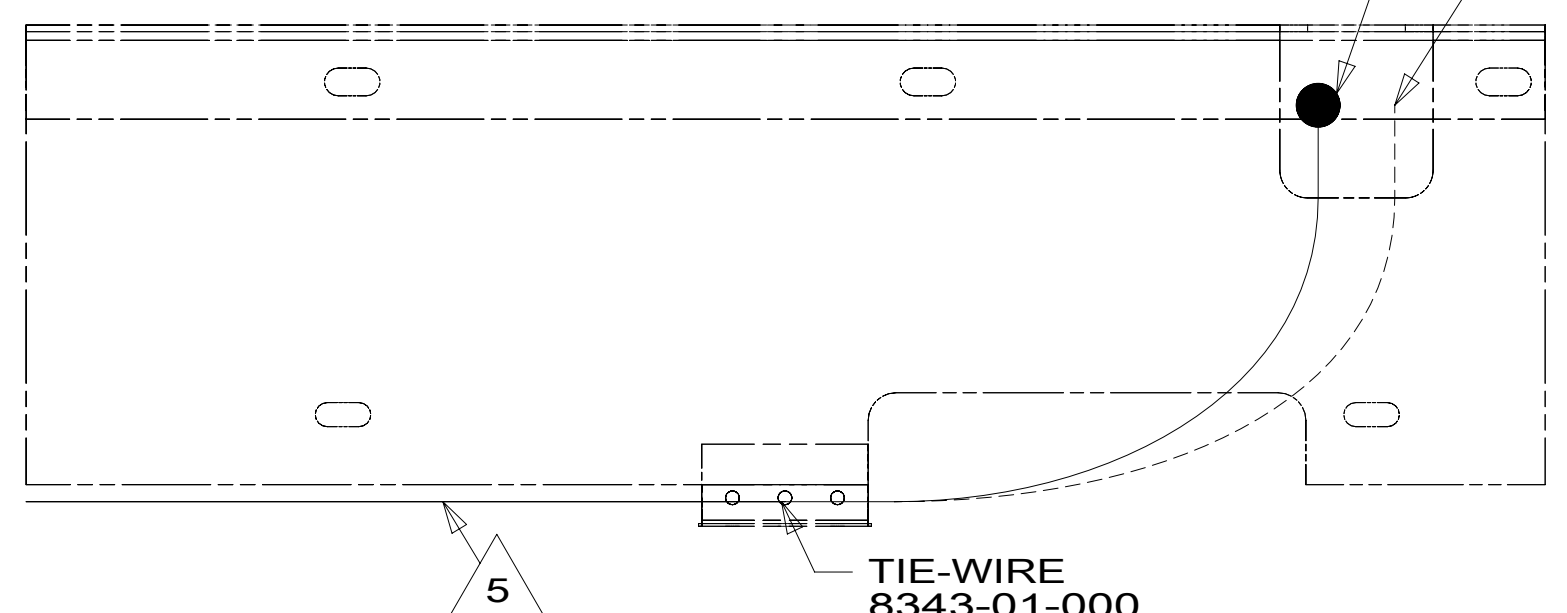
- 16L FORD 22,000#-22.5 AL WHL
- 265 CODES/STANDARDS-CSA/CMVSS
- 1B1 CODES/STANDARDS USA

|   |                                       |
|---|---------------------------------------|
| <b>WINNEBAGO</b><br>COPYRIGHT 2016 WINNEBAGO INDUSTRIES, INC. |                                       |
| DSNR:   | ALL DIMENSIONS ARE IN MILLIMETERS     |
| DFFR:   |                                       |
| UNSPECIFIED TOLERANCES:                                       | MATERIAL:                             |
| WHOLE DIM (X) :   | 3                                     |
| ONE-PLACE (X.X) :   | 1.5                                   |
| TWO-PLACE (X.XX) :  | 0.50                                  |
| ANGLE :   | 1°                                    |
| REFER TO ES0018 FOR FASTENER TIGHTENING GUIDELINES            | WEIGHT: (LBS) FIRST USED:             |
| <b>WIRING INSTL-CHASSIS</b>                                   |                                       |
| SHEET: 1 OF 2   | ITEM/PART NO: 000210208 / 30161801000 |
| REF:  | 1 20-Sep-2016                         |



VIEW BA

VIEW BB



VIEW BC

- 7 CUT CHASSIS SUPPLIED POSITIVE BATTERY CABLE 150MM FROM BATTERY TERMINAL END, DISCARD TERMINAL END AND SEPARATE WIRES. ADD TERMINAL 8348-01-000 AND HEAT SHRINK 176567-04-000 TO RED CABLE (CHASSIS STARTER) AND COMBINE YELLOW (CHASSIS POWER DISTRIBUTION) AND BLACK/ORANGE (CHASSIS ALTERNATOR) WIRES TOGETHER AND ADD TERMINAL 8348-01-000 AND HEAT SHRINK 176567-02-000. COIL EXCESS CABLE ALONG FRAME RAIL JUST BEHIND RADIATOR AND TIE UP WITH TIE-WIRE 8343-04-000.
- 6 SEE WIRING INSTL-FRONT END FOR ADDITIONAL INFORMATION.
- 5 SECURE SO WIRES DO NOT CONTACT EXHAUST.
- 4 SUPPLIED WITH CHASSIS.
- 3 COVER WITH CONDUIT 41953-10-000 AND 41953-11-000 AS REQUIRED.
- 2 CUT CHASSIS SUPPLIED BATTERY CABLE 700MM FROM BATTERY TERMINAL AND ADD TERMINAL 8348-01-000 TO CUT END.

1. SECURE CONDUIT 41953-09, -10, -11, -13, AND -14 OVER ALL WIRES IN CONTACT WITH SHARP EDGES.

NOTES:

- 8 PIN HIUSING WIRE ASM-CHASSIS TO GENERATOR
- CABLE ASM-GENERATOR TO GENERATOR STARTER TERMINAL

FOR ELECTRICAL TORQUE SPECIFICATIONS SEE DWG NO. 128783-01-000

FOR ELECTRICAL CALLOUTS SEE DWG NO. 121339-01-000

- 16L FORD 22,000#-22.5 AL WHL
- 265 CODES/STANDARDS-CSA/CMVSS
- 1B1 CODES/STANDARDS USA

|                             |                         |     |
|-----------------------------|-------------------------|-----|
| DESCRIPTION:                | 1B1 265 16L             |     |
| <b>WIRING INSTL-CHASSIS</b> |                         |     |
| SHEET:                      | ITEM/PART NO:           | REV |
| 2 OF 2                      | 000210208 / 30161801000 |     |