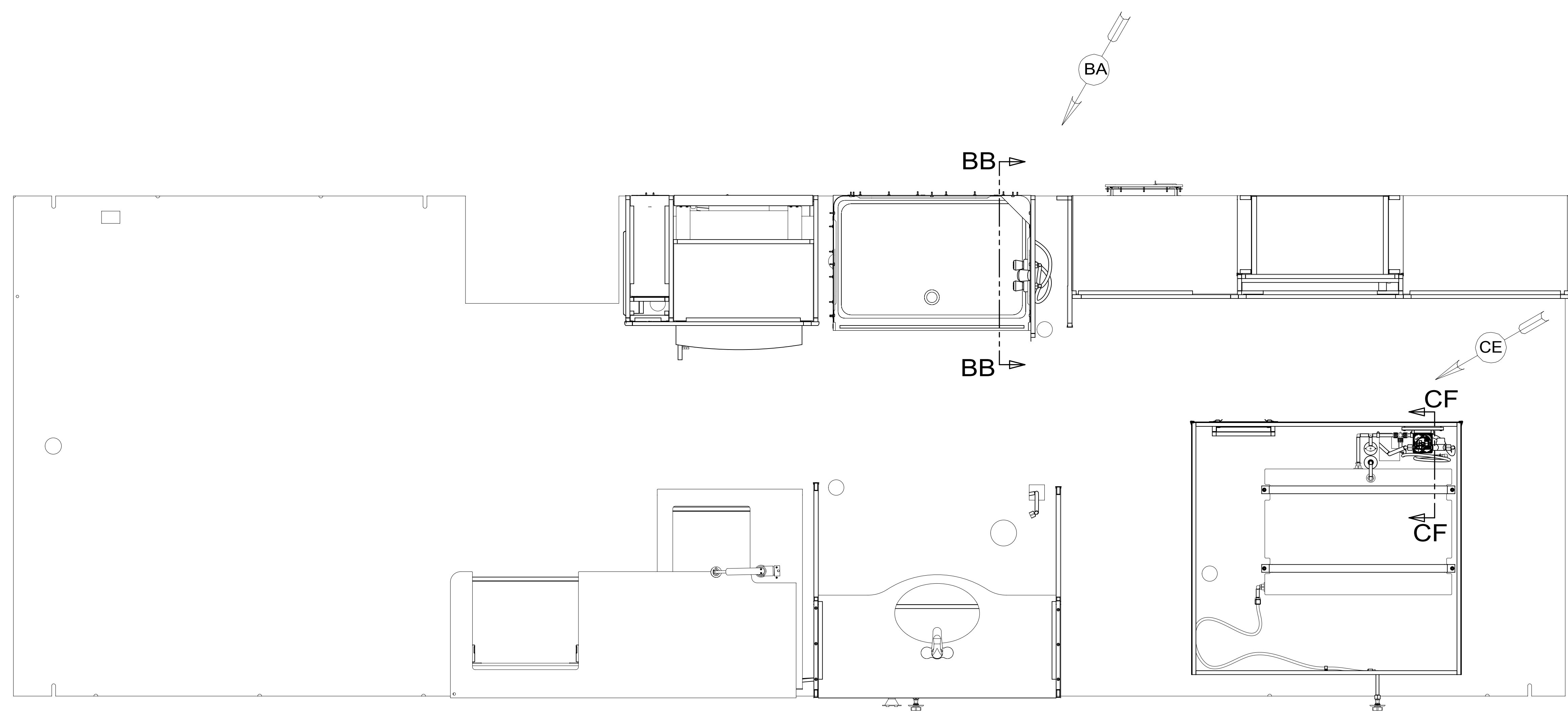


REV	ZONE	REVISION RECORD	DATE	DFTR-ORIG
A	---	INITIAL RELEASE	11/04/15	3660
B	---	CORRECTING PARTS LOADED IN THE MODEL	12/07/15	3660



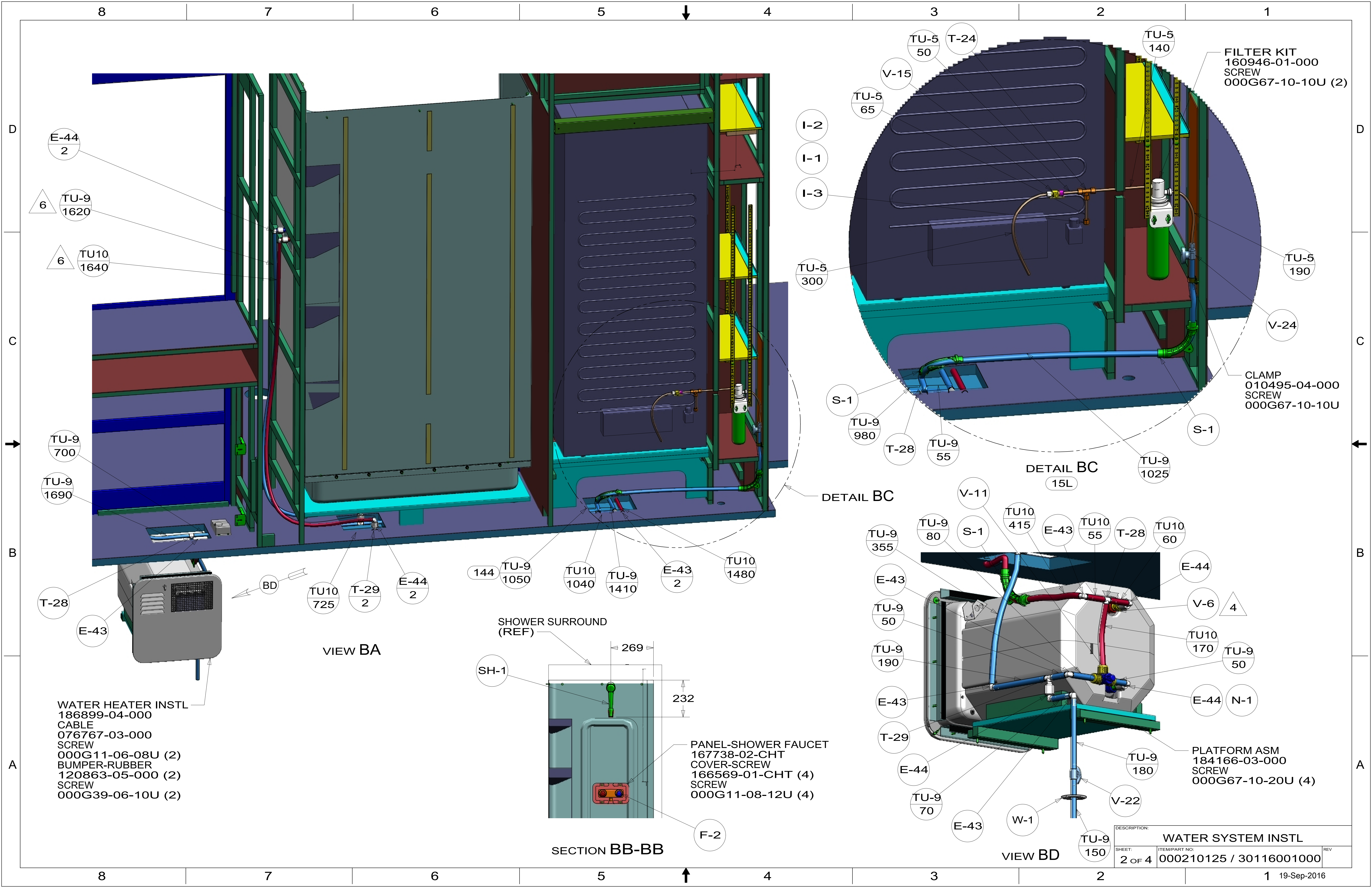
- 9 CLAMP LINES TO EDGE OF GALLEY CABINET FLOOR.  
 8. ALL CRIMP FITTINGS TO PEX TUBING REQUIRE 1/2" CLAMP 140171-03-000.  
 7. ALL CRIMP FITTINGS TO PEX TUBING REQUIRE 5/8" CLAMP 140171-04-000.  
 6 LABEL HOT AND COLD SUPPLY TUBES AND TAPE FITTING TO TUBE BEFORE CABINET SET TO PREVENT MOVEMENT.  
 5 ADD PIPE WRAP (LADDER SCRAP 110157-02-000) INSULATION.  
 4 ADD TEFLON TAPE 010405-02-000.  
 3. ALL TUBING TO BE SECURED AT 1200 INTERVALS MAXIMUM WITH CLAMP 010495-01-000 AND SCREW 000G67-10-12U OR EQUIVALENT.  
 2. TUBING TO BE INSTALLED WITH SUFFICIENT SLOPE TO PROVIDE DRAINAGE TO NEAREST VALVE.  
 1. PLASTIC FITTINGS TO BE SEALED WITH SEALANT 084456-01-000.

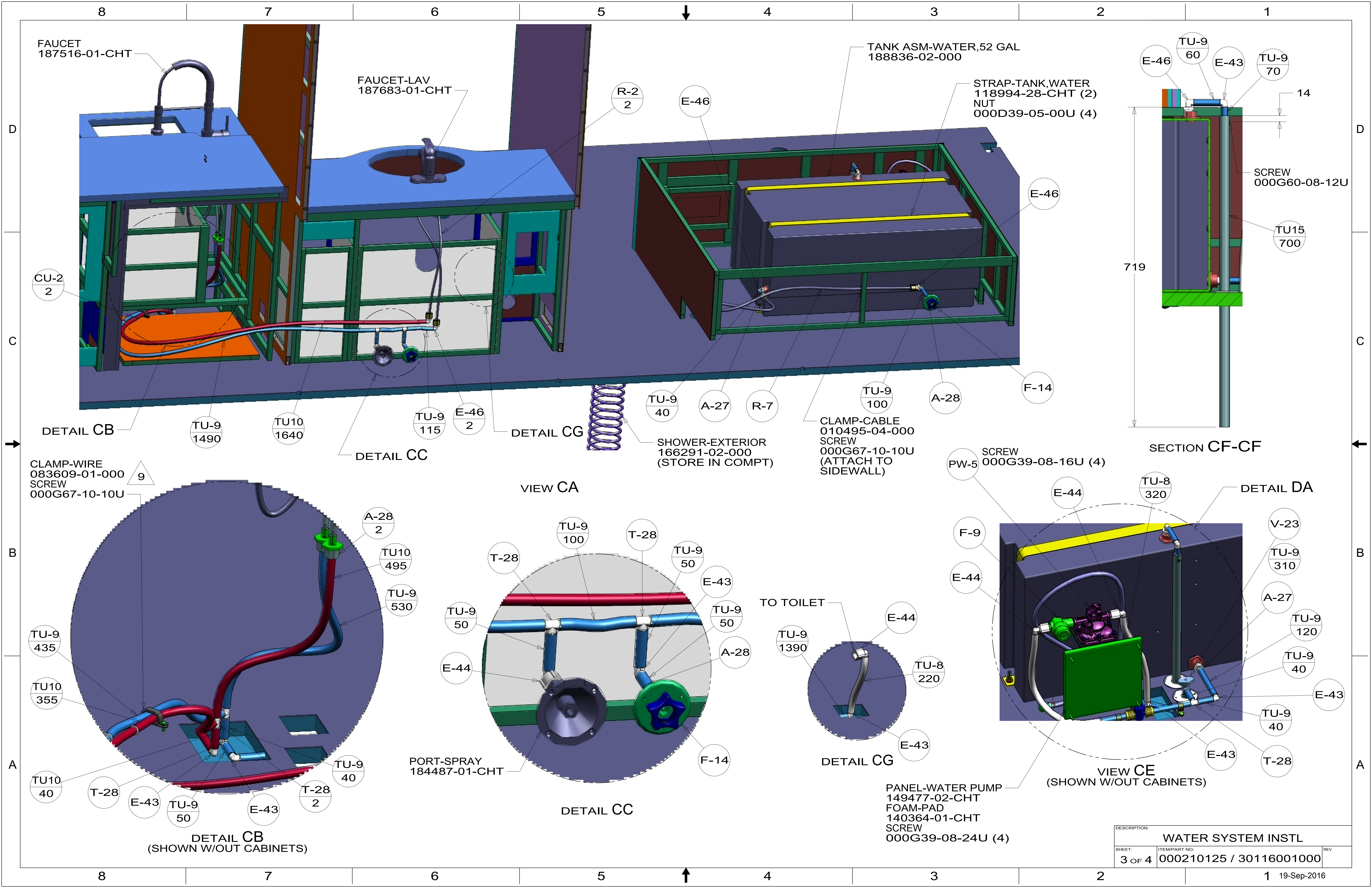
- 144 REFRIGERATOR-DOUBLE DOOR  
 15L RESIDENTIAL REFRIGERATOR PKG

X-X  
 FOR WATER CALLOUTS SEE DWG NO. 116230-01-000

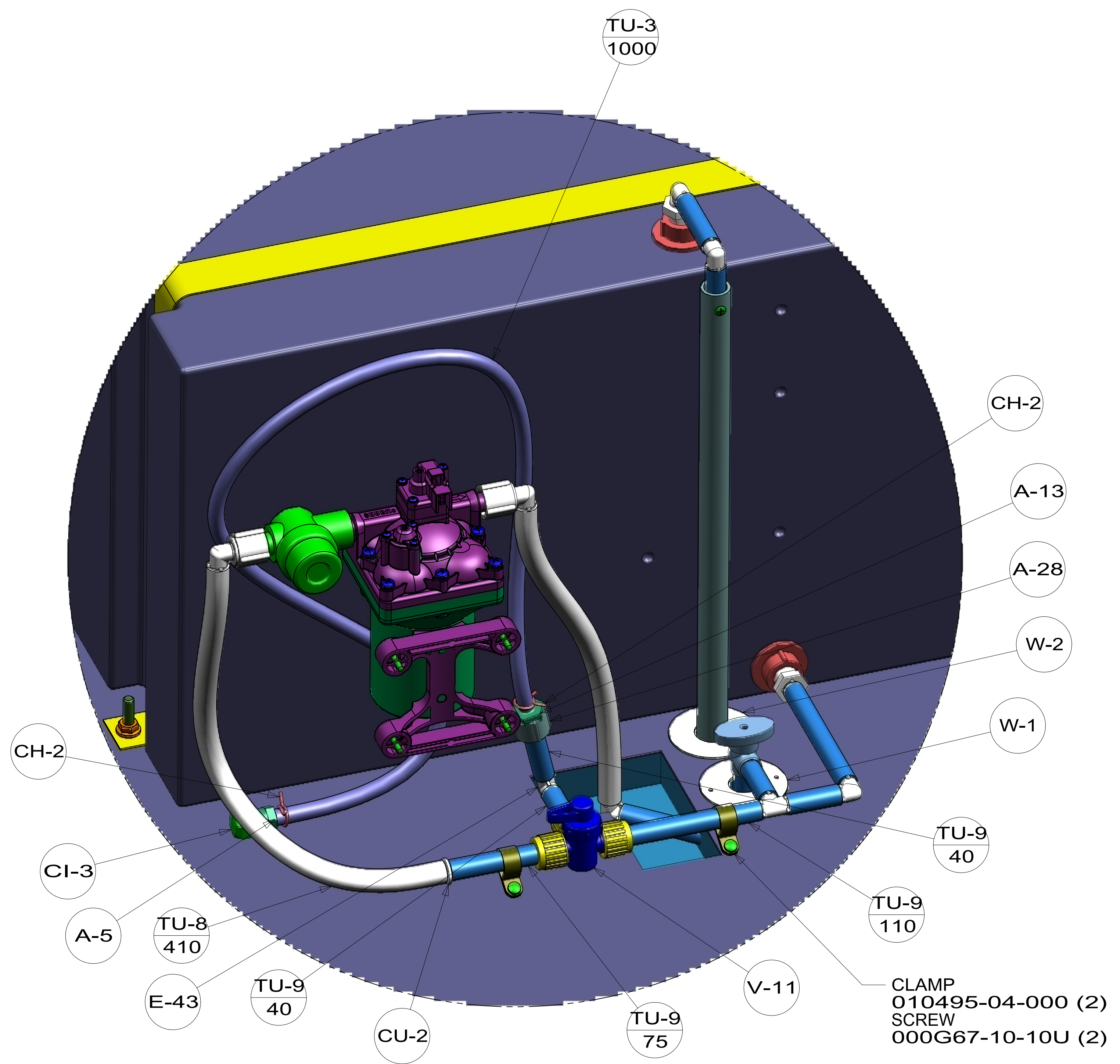
**WINNEBAGO**  
COPYRIGHT 2016 WINNEBAGO INDUSTRIES, INC.

DSNR:	ALL DIMENSIONS ARE IN MILLIMETERS	
DFTR:	MATERIAL:	
UNSPECIFIED TOLERANCES:	WHOLE DIM (X)	3
	ONE-PLACE (X.X)	1.5
	TWO-PLACE (X.XX)	0.50
	ANGLE	1°
REFER TO ES0018 FOR FASTENER TIGHTENING GUIDELINES	WEIGHT: (LBS)	FIRST USED: (REF)
DESCRIPTION: <b>WATER SYSTEM INSTL</b>		
SHEET: 1 OF 4	ITEM/PART NO: 000210125 / 30116001000	REV





DESCRIPTION:		
<b>WATER SYSTEM INSTL</b>		
SHEET:	ITEM/PART NO.:	REV
3 OF 4	000210125 / 30116001000	



DETAIL DA  
(SHOWN W/OUT CABINETS & PANEL)

DESCRIPTION:		
WATER SYSTEM INSTL		
SHEET:	ITEM/PART NO:	REV
4 OF 4	000210125 / 30116001000	