

- NOTES:
- 8 SEE WIRE ASM-CHASSIS FOR ADDITIONAL INFORMATION.
 - 7 ROUTE CAMERA CABLE UP B-PILLAR.
 - 6 INSTALL ON BACK SIDE OF RADIO.
 - 5 REMOVE ANTENNA FROM CHASSIS CAB ROOF AND RELOCATE TO MAIN ROOF. USE ANTENNA EXTENSION BETWEEN CHASSIS ANTENNA CABLE AND ANTENNA WHEN RELOCATING ANTENNA. SECURE BOTH ENDS OF ANTENNA EXTENSION WITH TAPE.
 - 4 SECURE RECEIVER TO DASH RADIO WIRING USING WIRE TIES.
 - 3 ROUTE ANTENNA CABLES DOWN B-PILLAR.
 - 2 ROUTE REAR MONITOR CAMERA CABLE ALONG FRAME RAIL WITH WIRE ASM-CHASSIS. SEE WIRING INSTL-CHASSIS FOR ADDITIONL INFORMATION.
 - 1 WRAP BRACKET LEGS AROUND ANTENNA BASE.

FOR ELECTRICAL TORQUE SPECIFICATIONS SEE DWG NO. 128783-01-000

FOR ELECTRICAL CALLOUTS SEE DWG NO. 121339-01-000

- 265 CODES/STANDARDS-CSA/CMVSS
- 1B1 CODES/STANDARDS USA
- 1B1 265

WINNEBAGO
COPYRIGHT 2016 WINNEBAGO INDUSTRIES, INC.

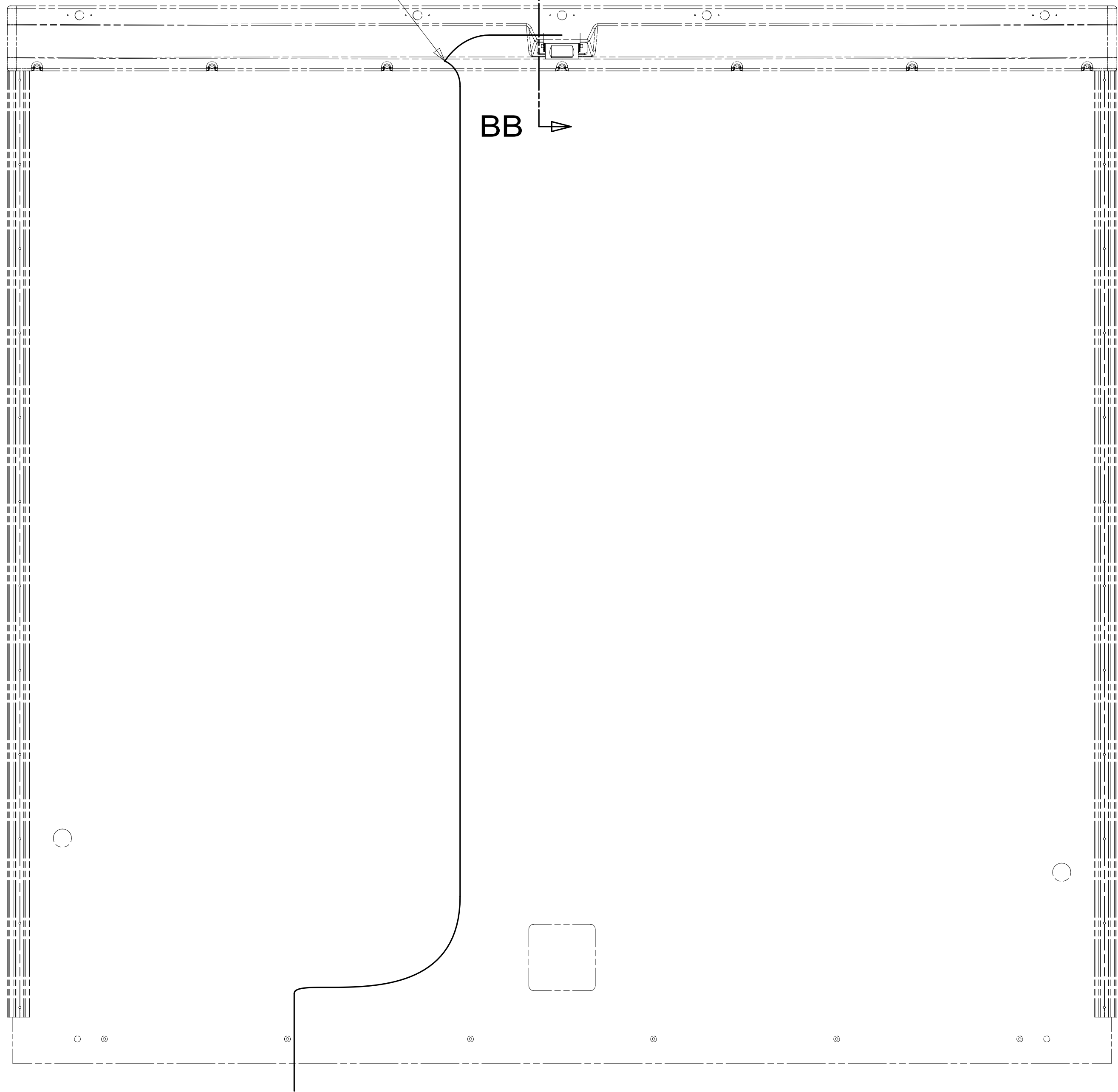
DSNR:	ALL DIMENSIONS ARE IN MILLIMETERS
DFFR:	MATERIAL:
UNSPECIFIED TOLERANCES:	
WHOLE DIM (X) :	3
ONE-PLACE (X.X) :	1.5
TWO-PLACE (X.XX) :	0.50
ANGLE :	1°
REFER TO ES0018 FOR FASTENER TIGHTENING GUIDELINES	WEIGHT: (LBS) FIRST USED:
DESCRIPTION: RADIO/MONITOR INSTL	
SHEET: 1 OF 3	ITEM/PART NO: 000210069 / 30092001000
REF:	REV:

8 7 6 5 4 3 2 1

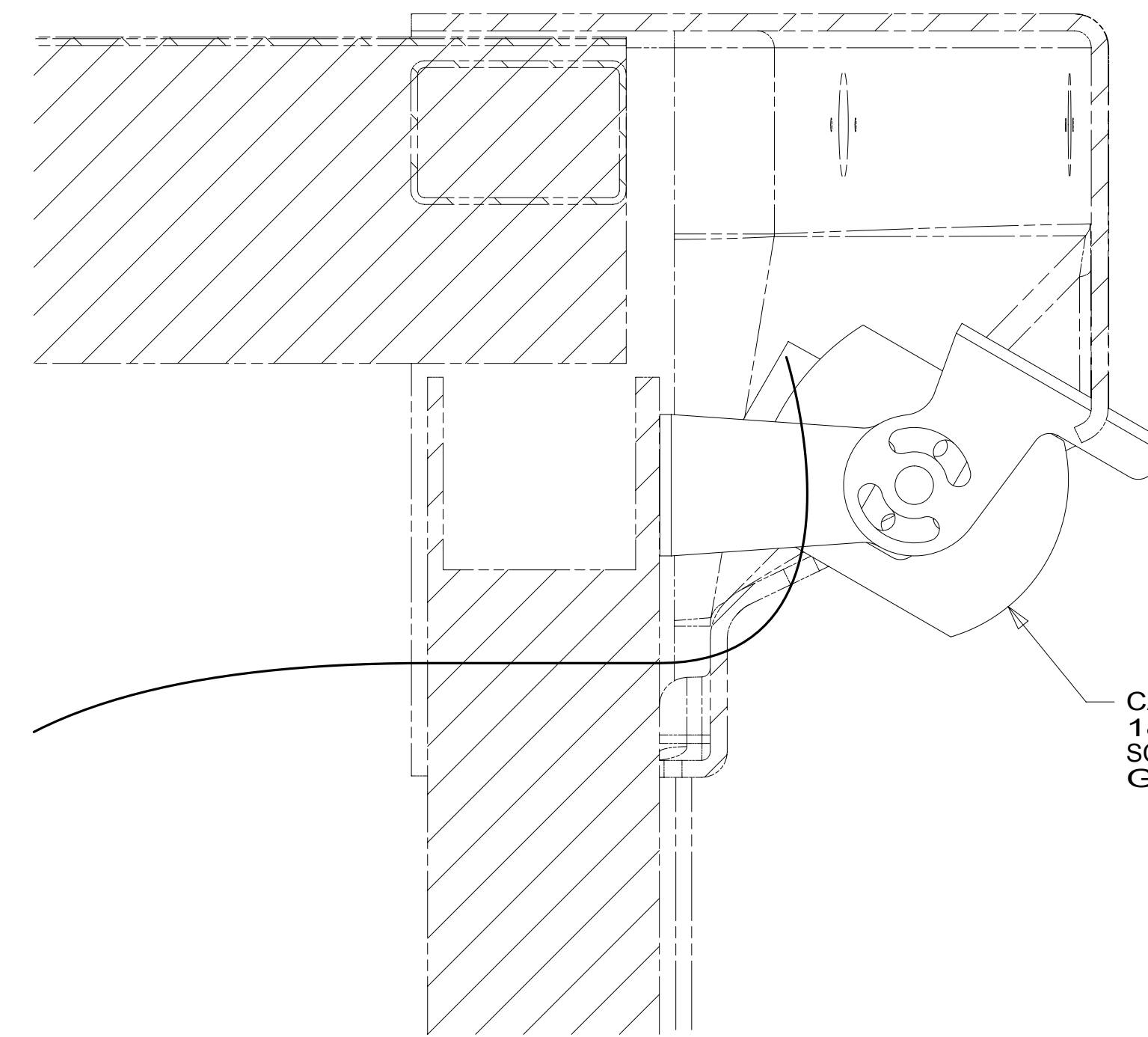
ROUTE CAMERA CABLE THROUGH BACKWALL

BB

BB



VIEW BA



CAMERA-REAR VIEW
183822-01-000
SCREW
G39-10-12U (5)

SECTION BB-BB

265 CODES/STANDARDS-CSA/CMVSS

1B1 CODES/STANDARDS USA

1B1 265

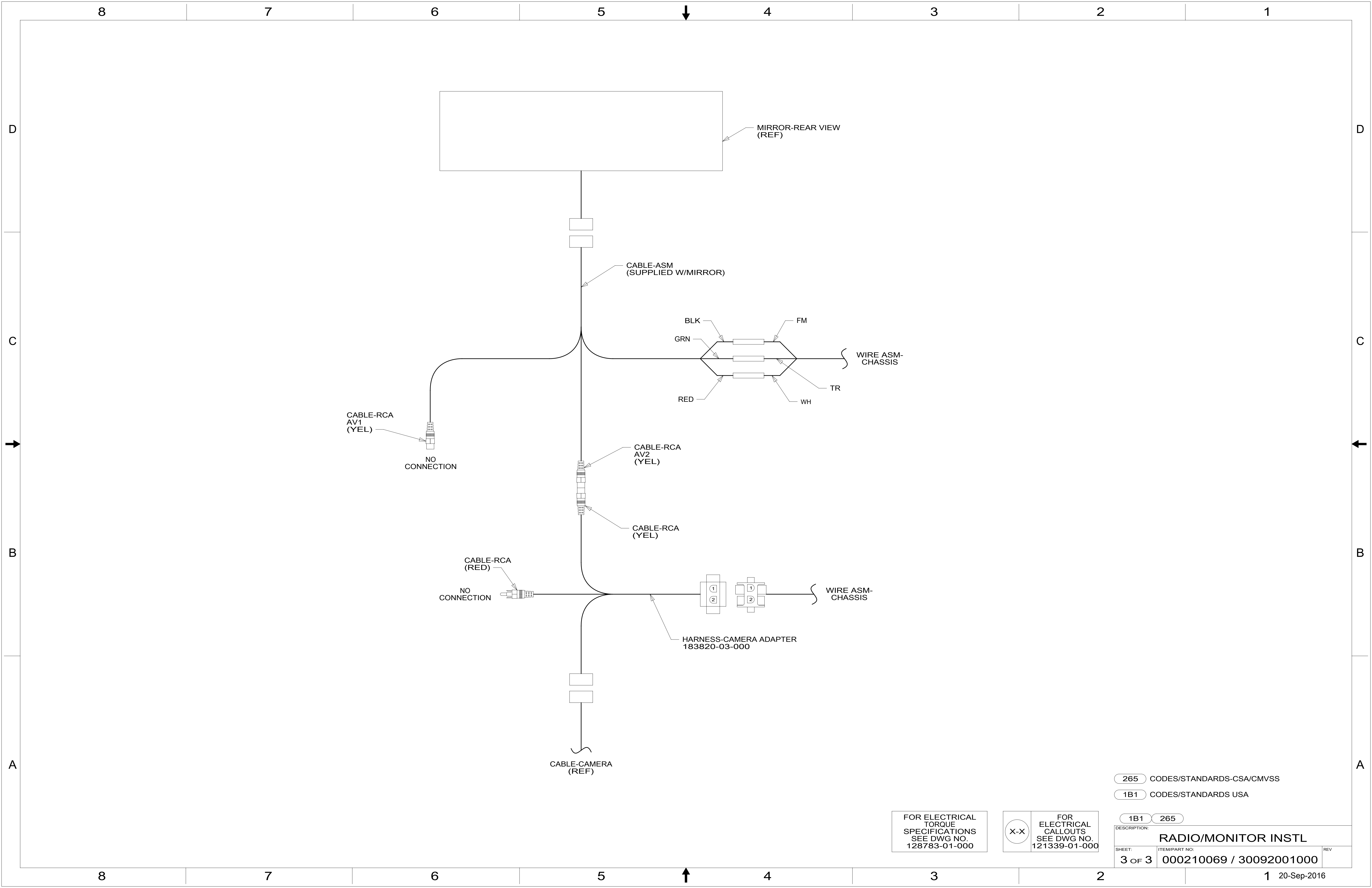
FOR ELECTRICAL
TORQUE
SPECIFICATIONS
SEE DWG NO.
128783-01-000

FOR
ELECTRICAL
CALLOUTS
SEE DWG NO.
121339-01-000

DESCRIPTION:
RADIO/MONITOR INSTL

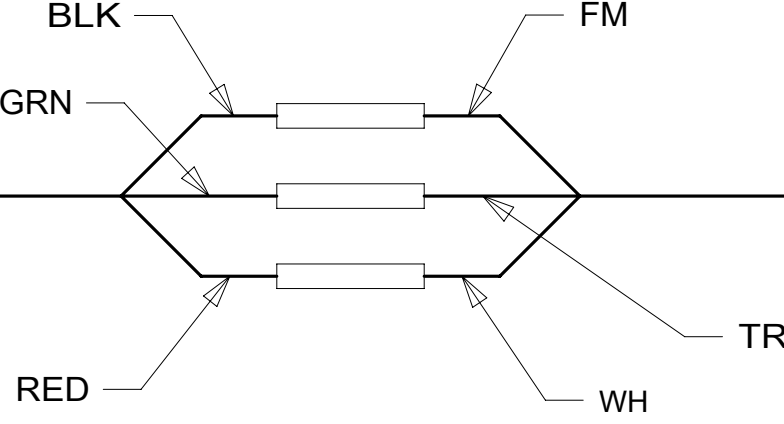
SHEET: 2 OF 3 ITEM/PART NO: 000210069 / 30092001000 REV

8 7 6 5 4 3 2 1 20-Sep-2016



MIRROR-REAR VIEW (REF)

CABLE-ASM (SUPPLIED W/MIRROR)



WIRE ASM-CHASSIS

CABLE-RCA AV1 (YEL)

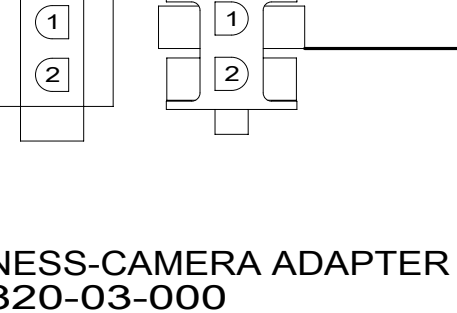
NO CONNECTION

CABLE-RCA AV2 (YEL)

CABLE-RCA (YEL)

CABLE-RCA (RED)

NO CONNECTION



HARNES-CAMERA ADAPTER 183820-03-000

WIRE ASM-CHASSIS

CABLE-CAMERA (REF)

265 CODES/STANDARDS-CSA/CMVSS

1B1 CODES/STANDARDS USA

1B1 265

FOR ELECTRICAL TORQUE SPECIFICATIONS SEE DWG NO. 128783-01-000

FOR ELECTRICAL CALLOUTS SEE DWG NO. 121339-01-000

DESCRIPTION: RADIO/MONITOR INSTL		
SHEET: 3 OF 3	ITEM/PART NO.: 000210069 / 30092001000	REV