

- NOTES:
- 9 FASTEN PLATFORM TO FLOOR AFTER SIDEWALL IS SET AND HEATER IS ATTACHED TO WALL.
 - 8. ALL CRIMP FITTINGS TO 1/2" PEX TUBING REQUIRE 1/2" CLAMP 140171-03-000.
 - 7. ALL CRIMP FITTINGS TO 5/8" PEX TUBING REQUIRE 5/8" CLAMP 140171-04-000.
 - 6 LABEL HOT AND COLD SUPPLY TUBES AND TAPE FITTING TO TUBE BEFORE CABINET SET TO PREVENT MOVEMENT.
 - 5 ADD PIPE WRAP (LADDER SCRAP 110157-02-000) INSULATION.
 - 4 ADD TEFLON TAPE 010405-02-000.
 - 3. ALL TUBING TO BE SECURED AT 1200 INTERVALS MAXIMUM WITH CLAMP 010495-01-000 AND SCREW 000G67-10-12U OR EQUIVALENT.
 - 2. TUBING TO BE INSTALLED WITH SUFFICIENT SLOPE TO PROVIDE DRAINAGE TO NEAREST VALVE.
 - 1. PLASTIC FITTINGS TO BE SEALED WITH SEALANT 084456-01-000.

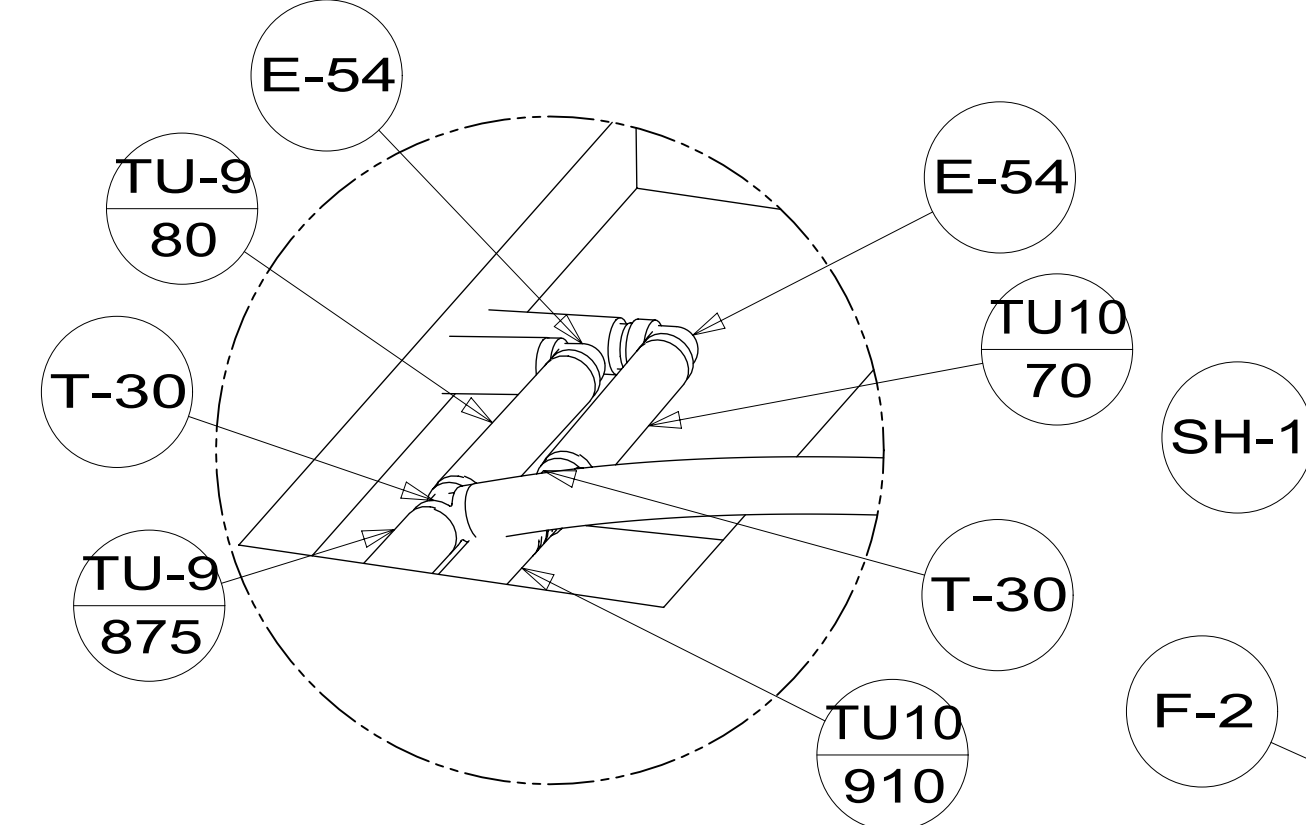
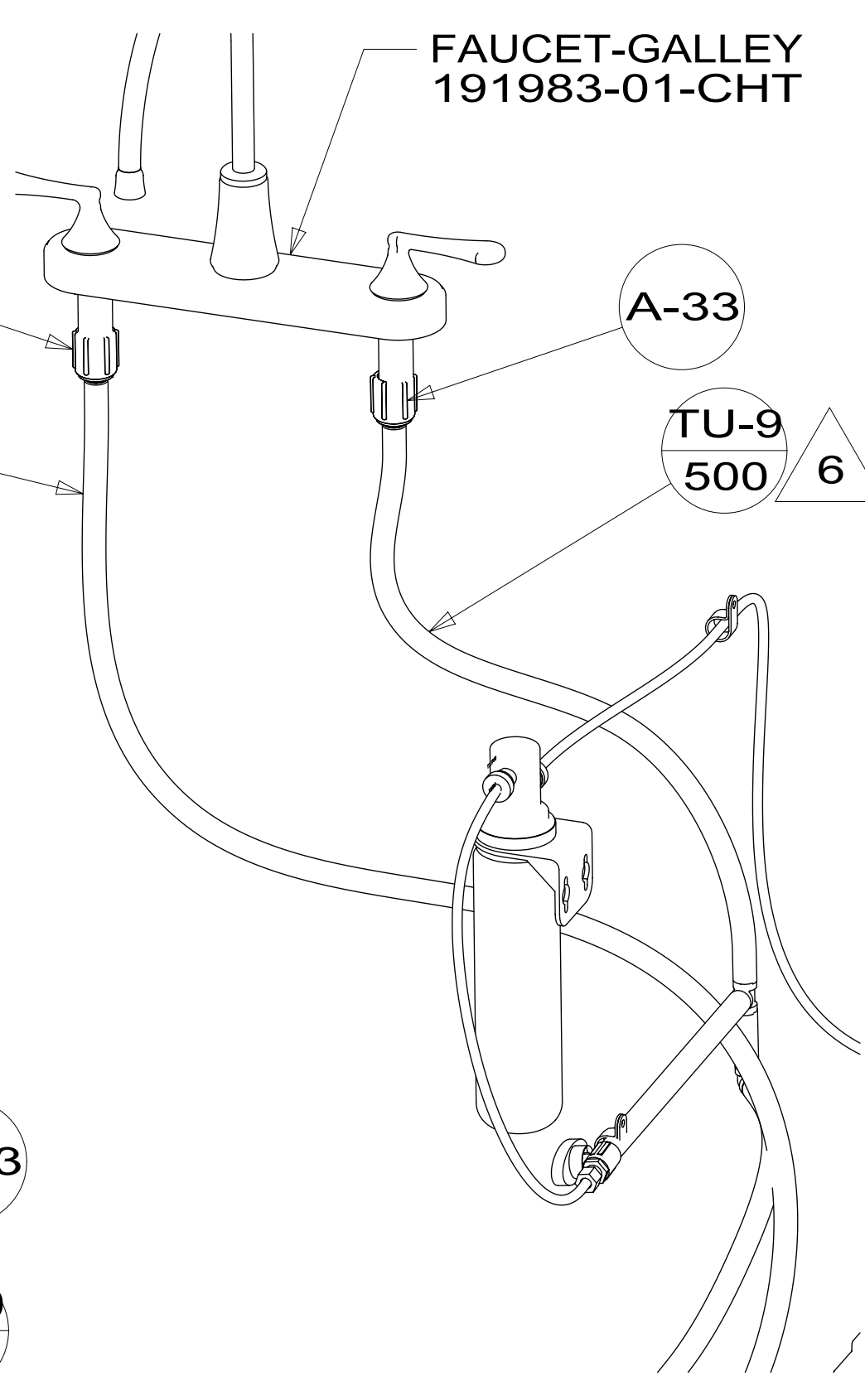
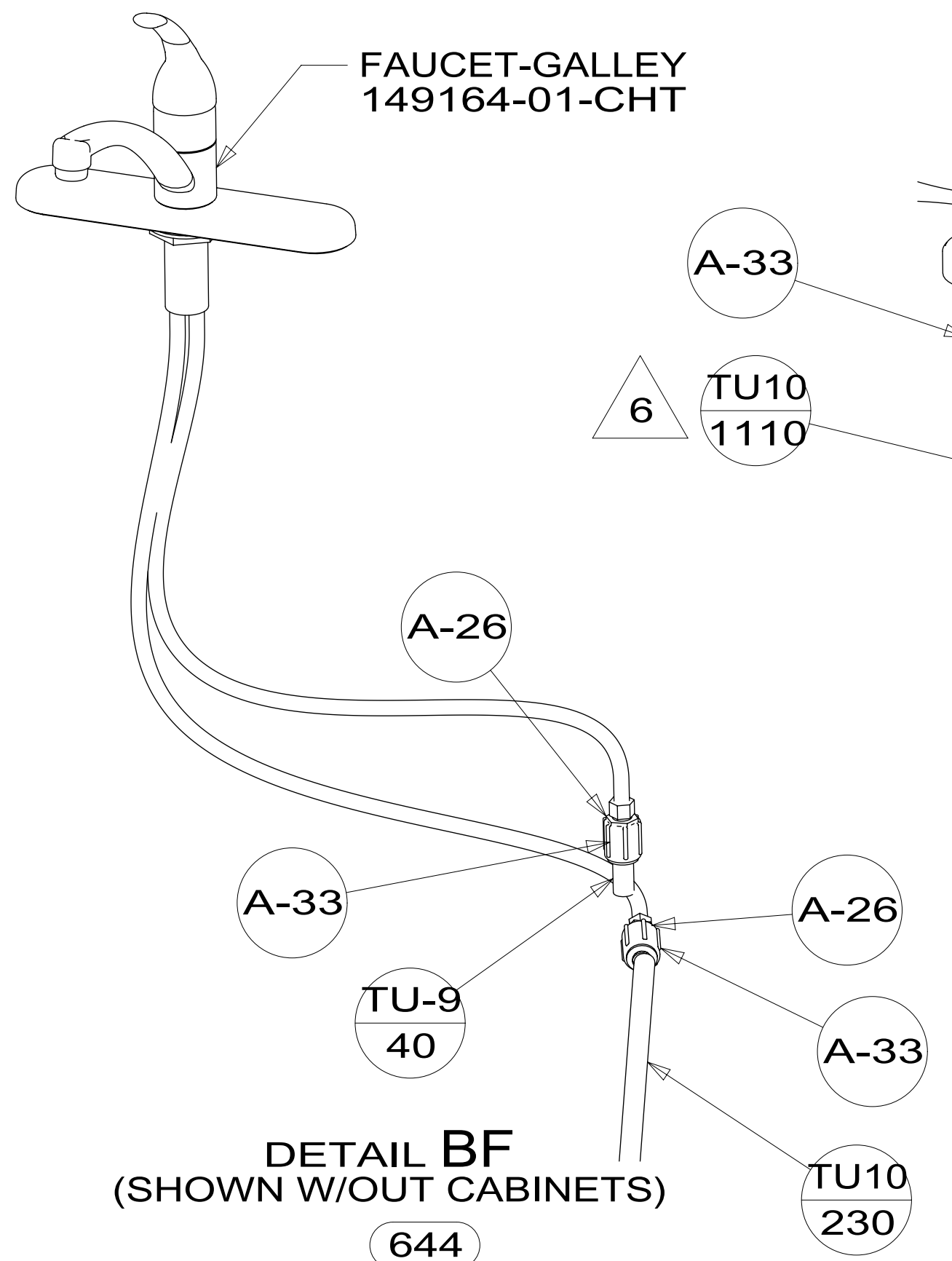
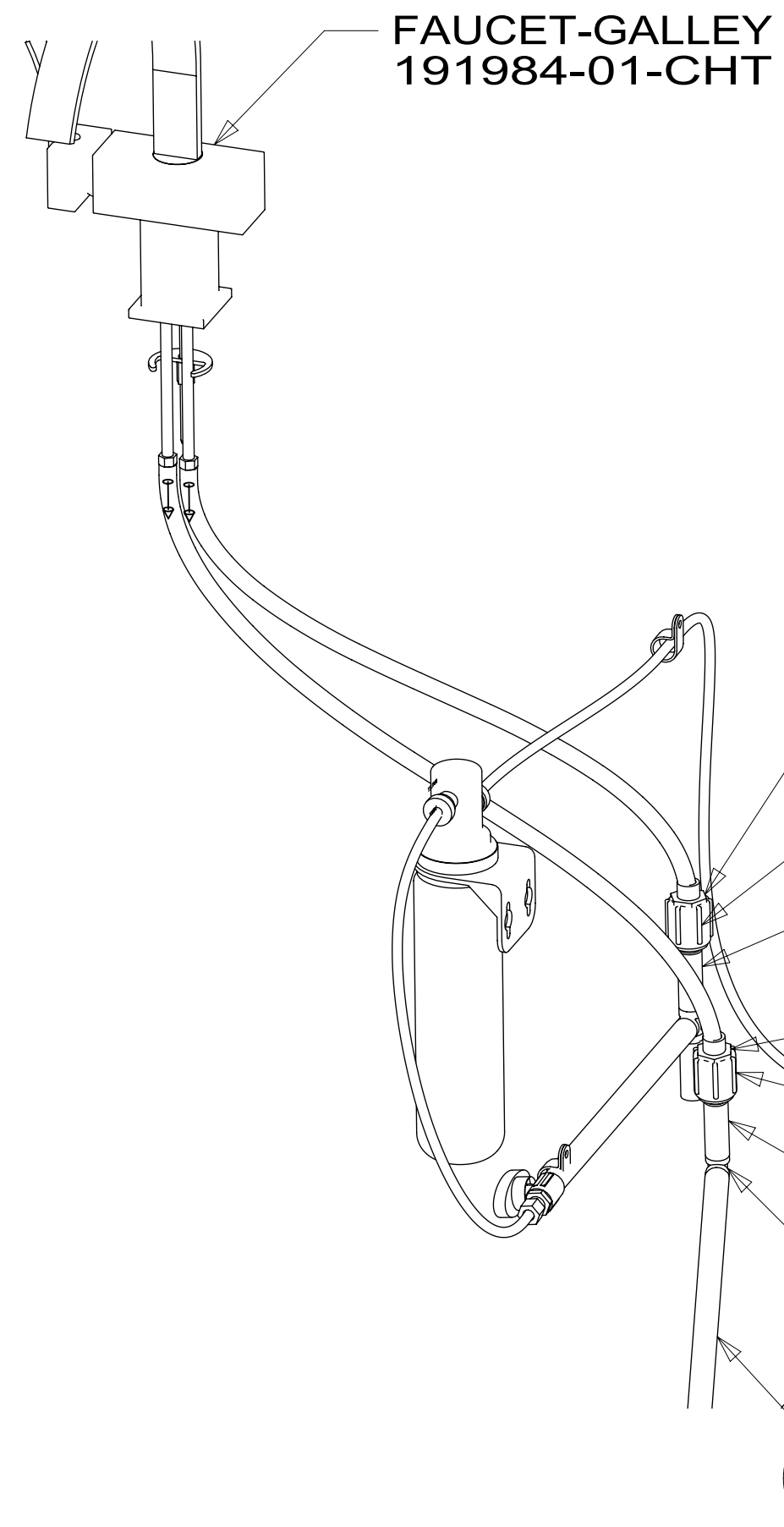
- 093 PREMIUM PACKAGE WITHOUT
- 09A PREMIUM PACKAGE
- 38E CONVENIENCE PACKAGE
- 640 RENTAL - GAH WITHOUT
- 644 GREAT ALASKAN RENTAL PACKAGE
- 501 WATER PURIFIER WITHOUT
- 79W REFRIGERATOR-4 DOOR

X-X
FOR WATER
CALLOUTS
SEE DWG NO.
000209446 /
303369-01-000

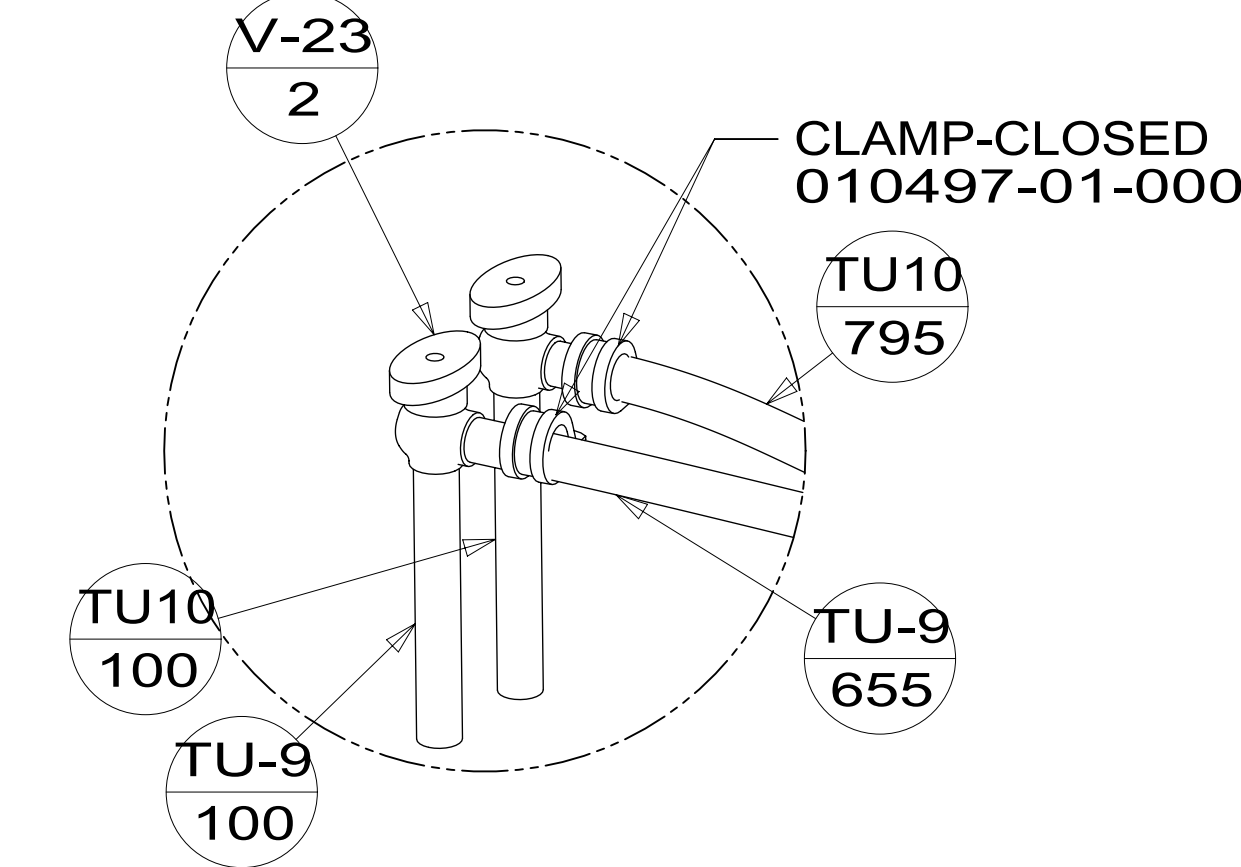
WINNEBAGO
COPYRIGHT 2016 WINNEBAGO INDUSTRIES, INC.

| | | | |
|--|---------------------------------------|-----------------------------------|-------------------|
| DSNR: | | ALL DIMENSIONS ARE IN MILLIMETERS | |
| DIFTR: | | | |
| UNSPECIFIED TOLERANCES: | | MATERIAL: | |
| WHOLE DIM (X) | 3 | | |
| ONE-PLACE (X.X) | 1.5 | | |
| TWO-PLACE (X.XX) | 0.50 | | |
| ANGLE | 1° | | |
| REFER TO ES0018 FOR FASTENER TIGHTENING GUIDELINES | | WEIGHT: (LBS) | FIRST USED: (REF) |
| | | | 16 331K |
| DESCRIPTION: WATER SYSTEM INSTL | | | |
| SHEET: 1 OF 4 | ITEM/PART NO: 000210052 / 30082101000 | REV: | |
| REF: | | 1 19-Sep-2016 | |

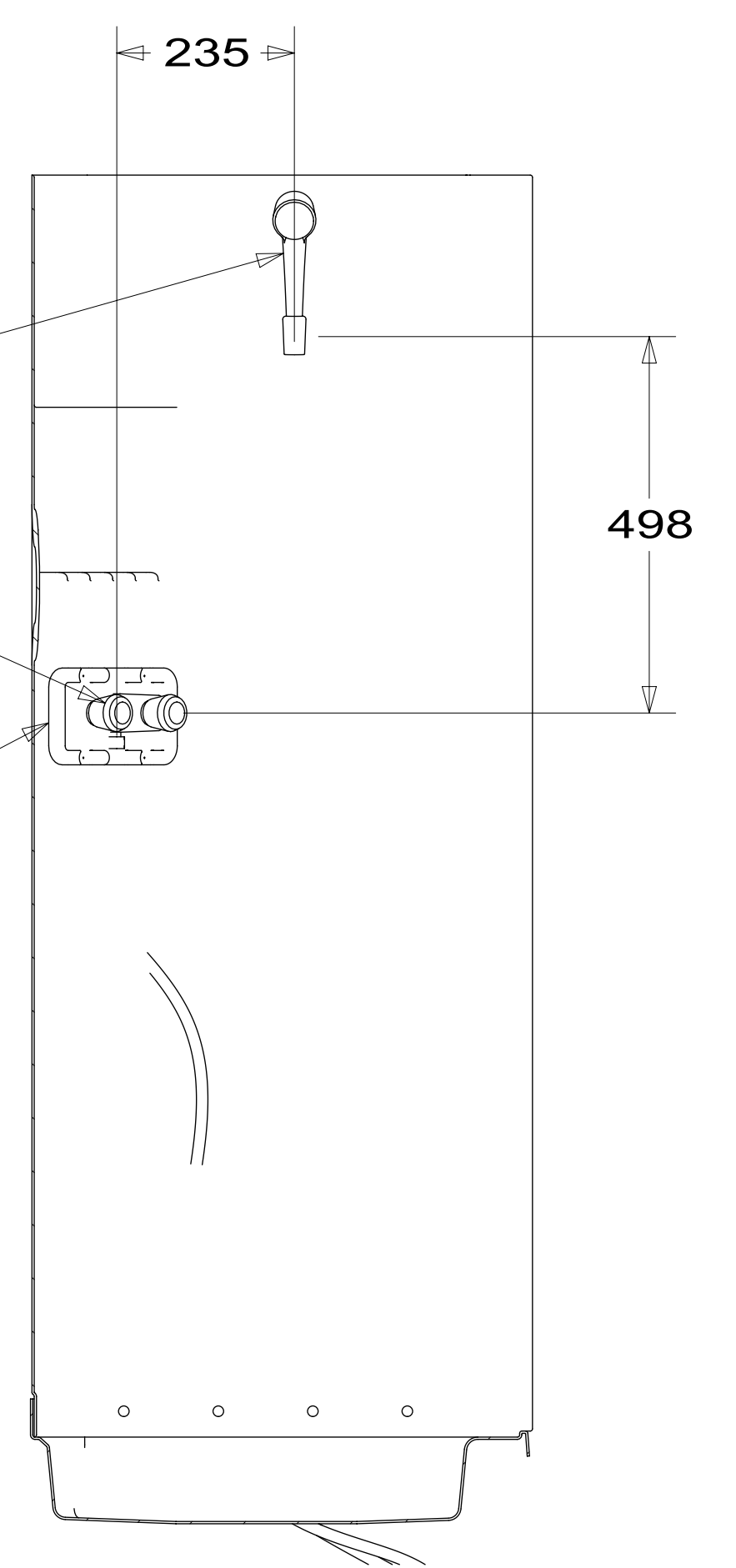
*300821*A



DETAIL BB PANEL-SH FAUCET
167738-02-CHT



DETAIL BC
(SHOWN W/OUT CABINETS & FLOOR)

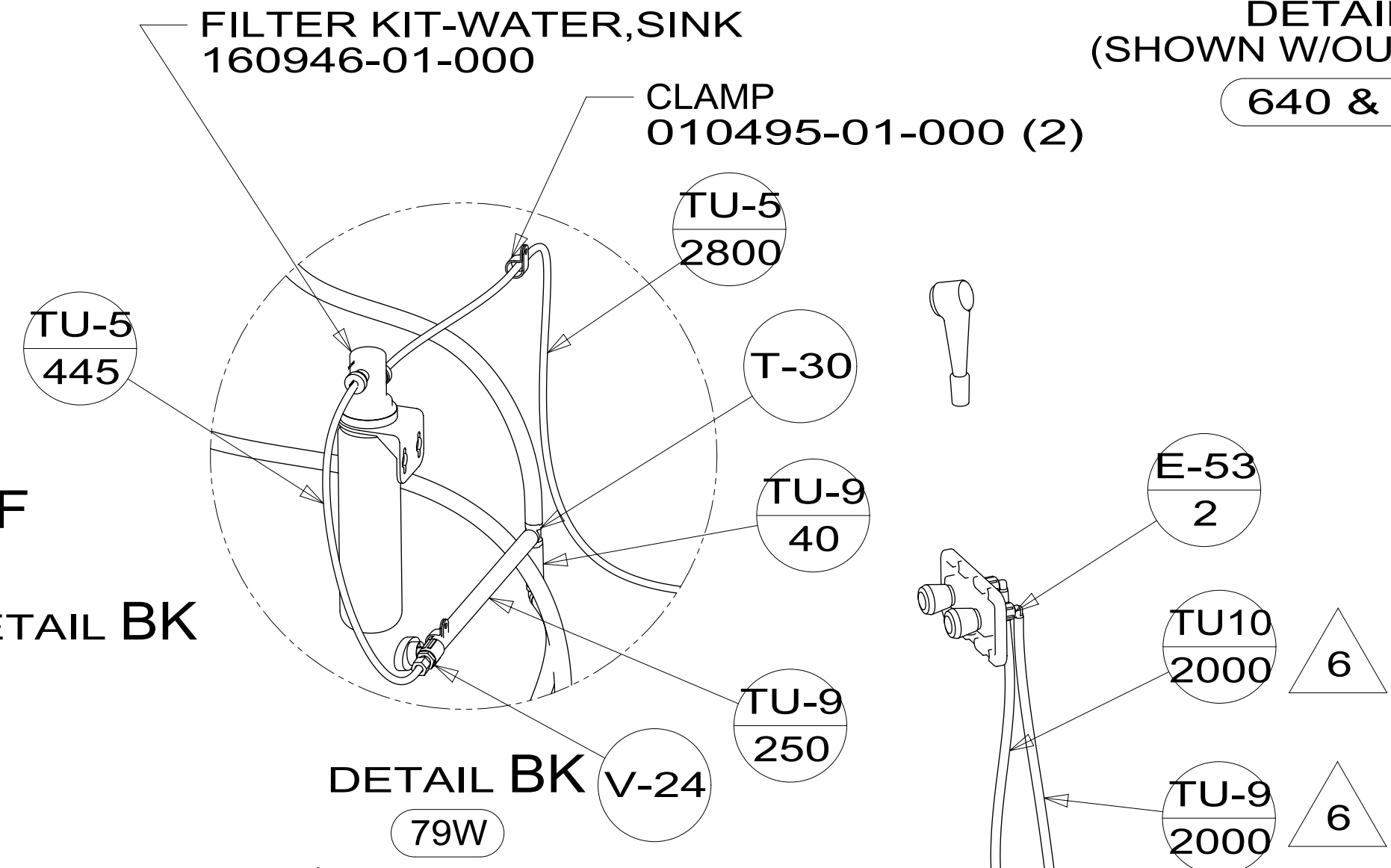


SECTION BE-BE

DETAIL BF
(SHOWN W/OUT CABINETS)
640 & 09A

DETAIL BF
(SHOWN W/OUT CABINETS)
644

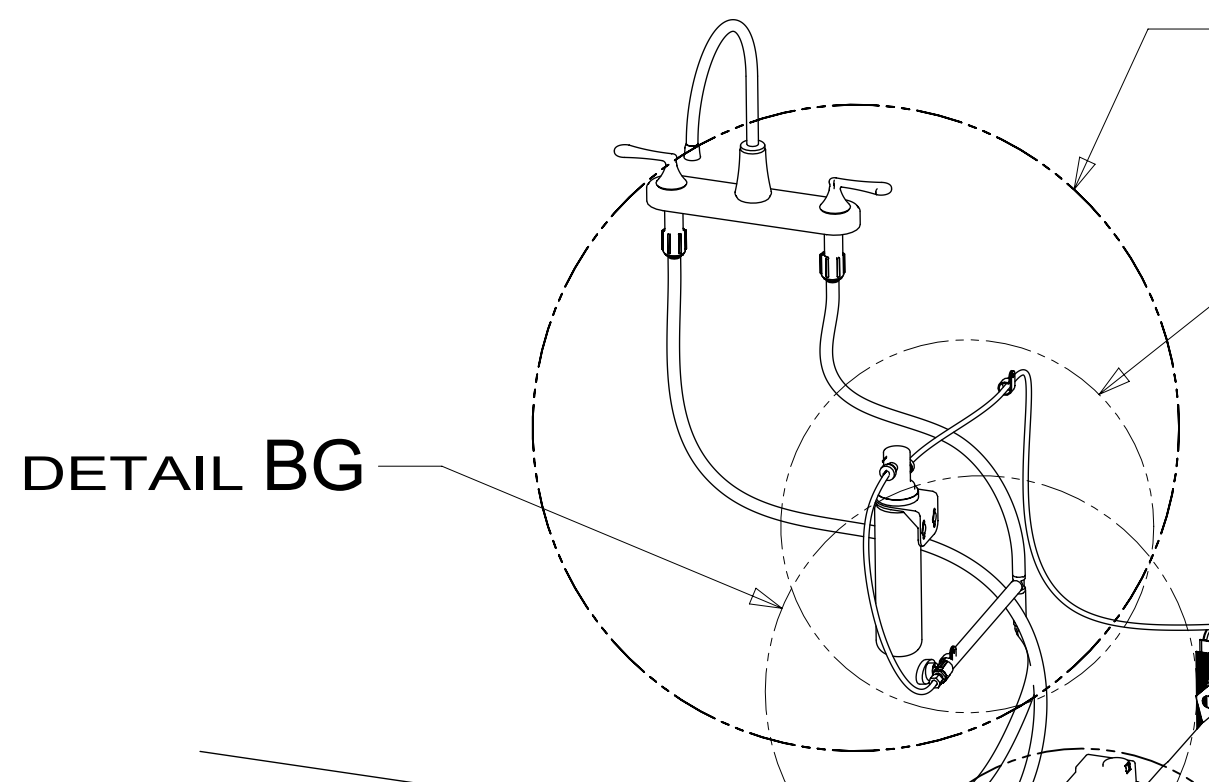
DETAIL BF
(SHOWN W/OUT CABINETS)
640 & 093



DETAIL BK
79W

DETAIL BF

DETAIL BK



DETAIL BD
(SHOWN W/OUT CABINETS)

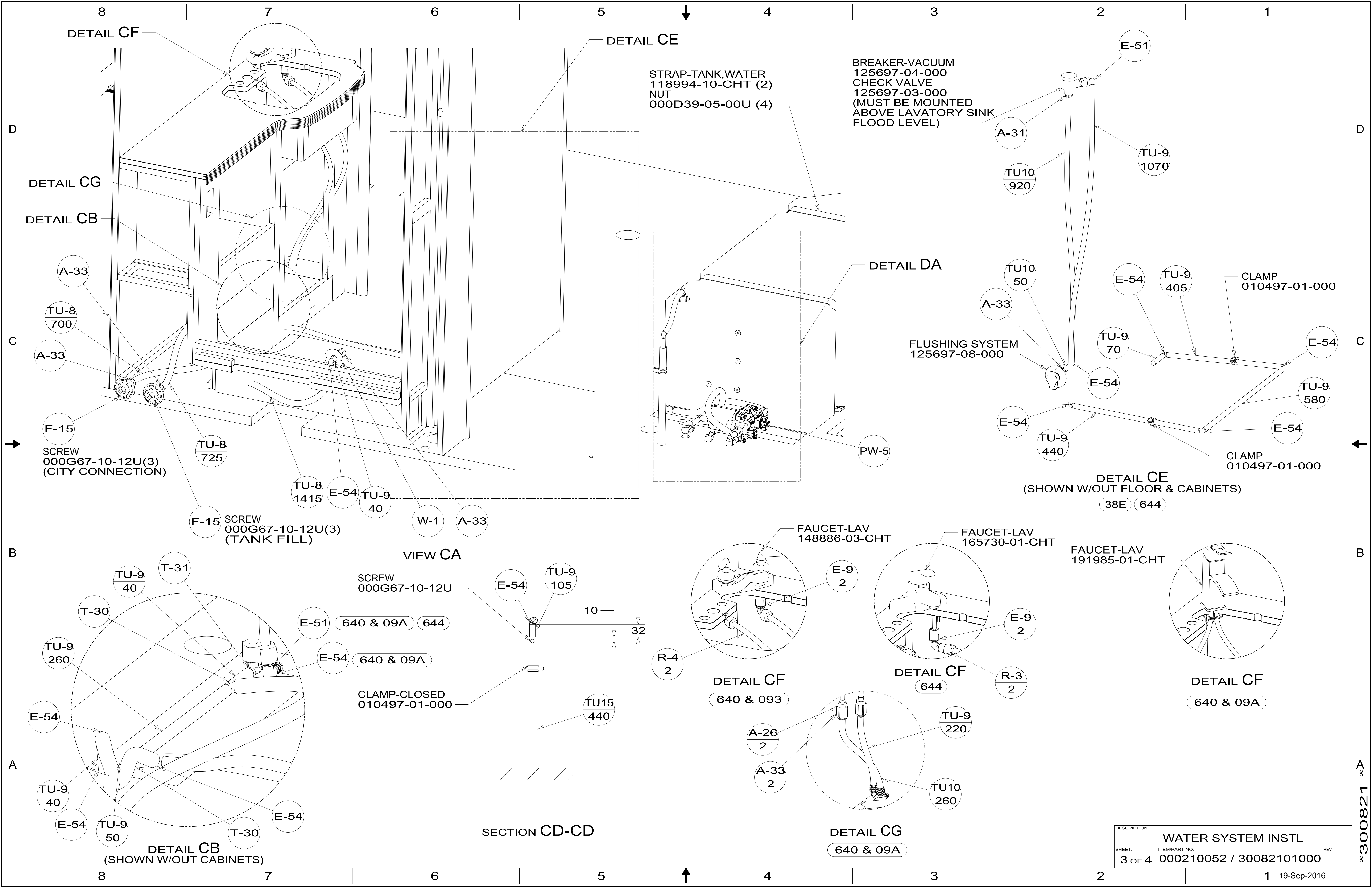
DETAIL BG
SCALE 1:5
(SHOWN W/OUT CABINETS)

VIEW BA

DETAIL BB

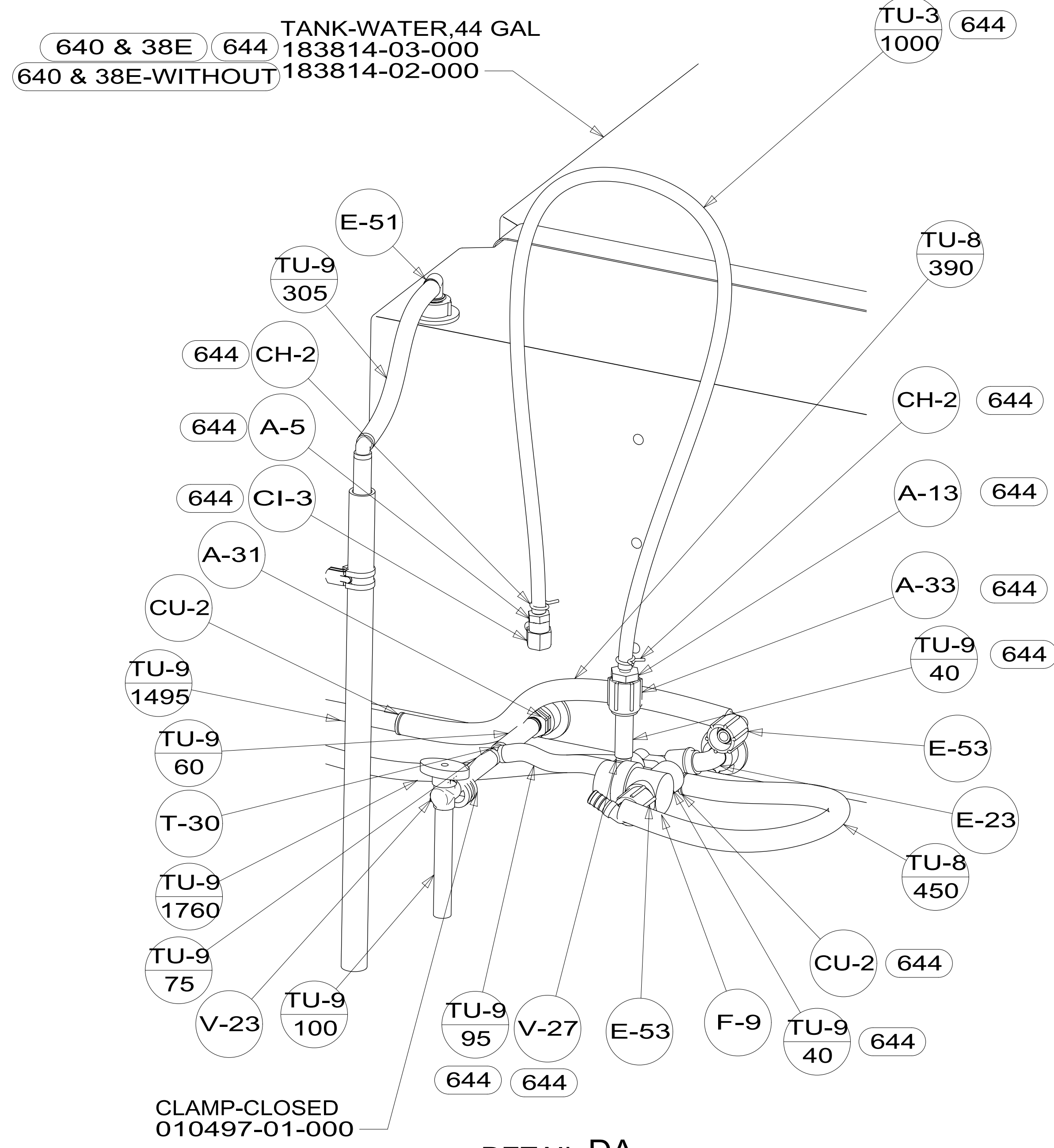
| | | |
|------------------------------------|--|-------------------|
| DESCRIPTION: WATER SYSTEM INSTL | | |
| SHEET: 2 OF 4 | ITEM/PART NO: 000210052 / 30082101000 | REV 093 09A |

*300821



| | | |
|--------------------|-------------------------|-----|
| DESCRIPTION: | | |
| WATER SYSTEM INSTL | | |
| SHEET: | ITEM/PART NO: | REV |
| 3 OF 4 | 000210052 / 30082101000 | |

300821



DETAIL DA
 (SHOWN W/OUT FLOOR & PUMP-WATER)

| | | |
|--------------------|-------------------------|------|
| DESCRIPTION: | | |
| WATER SYSTEM INSTL | | |
| SHEET: | ITEM/PART NO: | REV: |
| 4 OF 4 | 000210052 / 30082101000 | |

300821