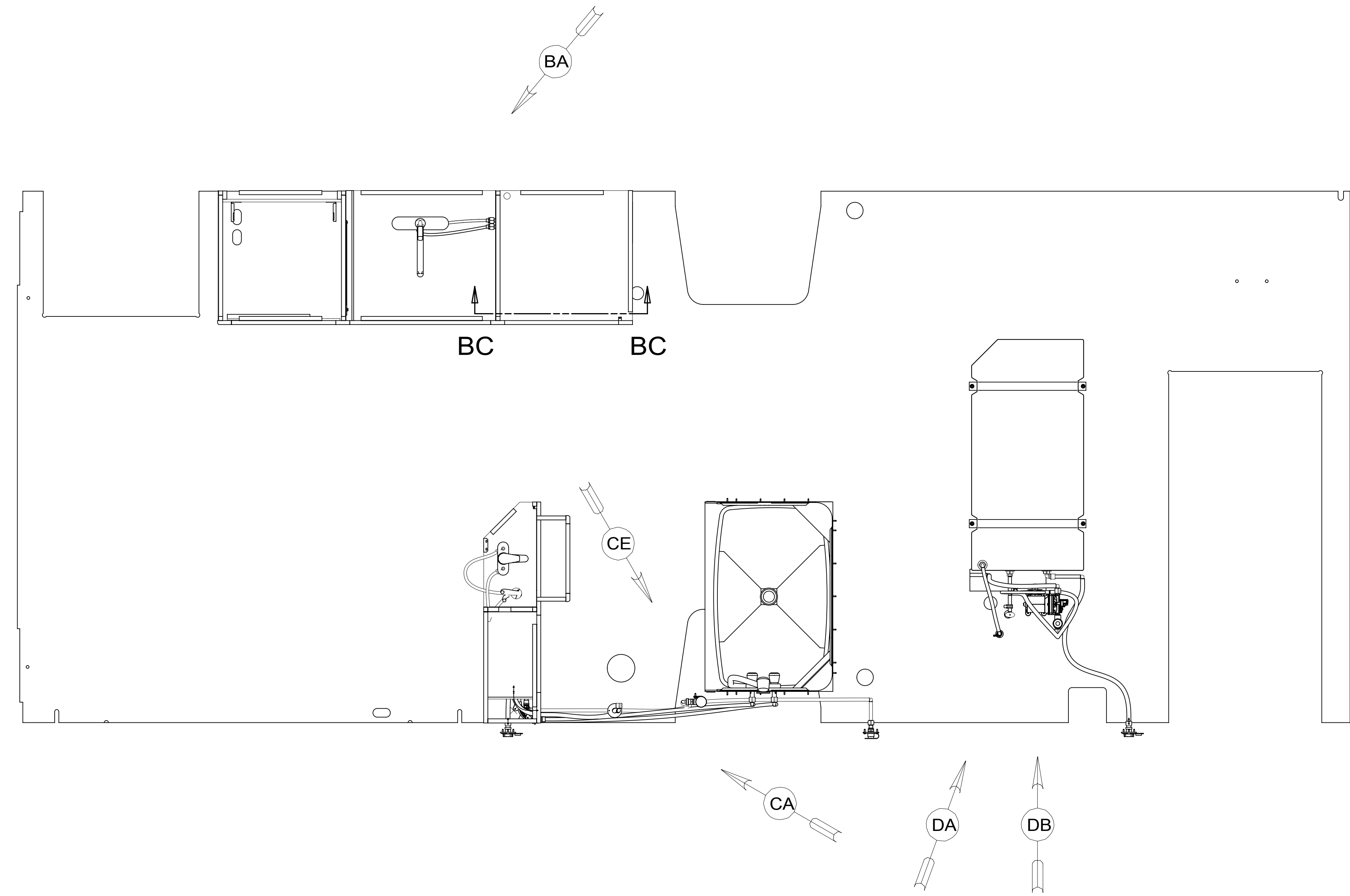


REV	ZONE	REVISION RECORD	DATE	DFTR-ORIG
A	---	INITIAL RELEASE	11/03/15	3650
B	SHT3&4	REPLACE 192406-01 WITH F-15	11/13/15	0750-1600
C	SHT3	ADD 644 NOTES TO COMPONENTS	01/12/16	6018
D	S3B1	CORRECTING PARTS LOADED IN MODEL. ADD MISSING CALLOUTS	01/27/16	3660



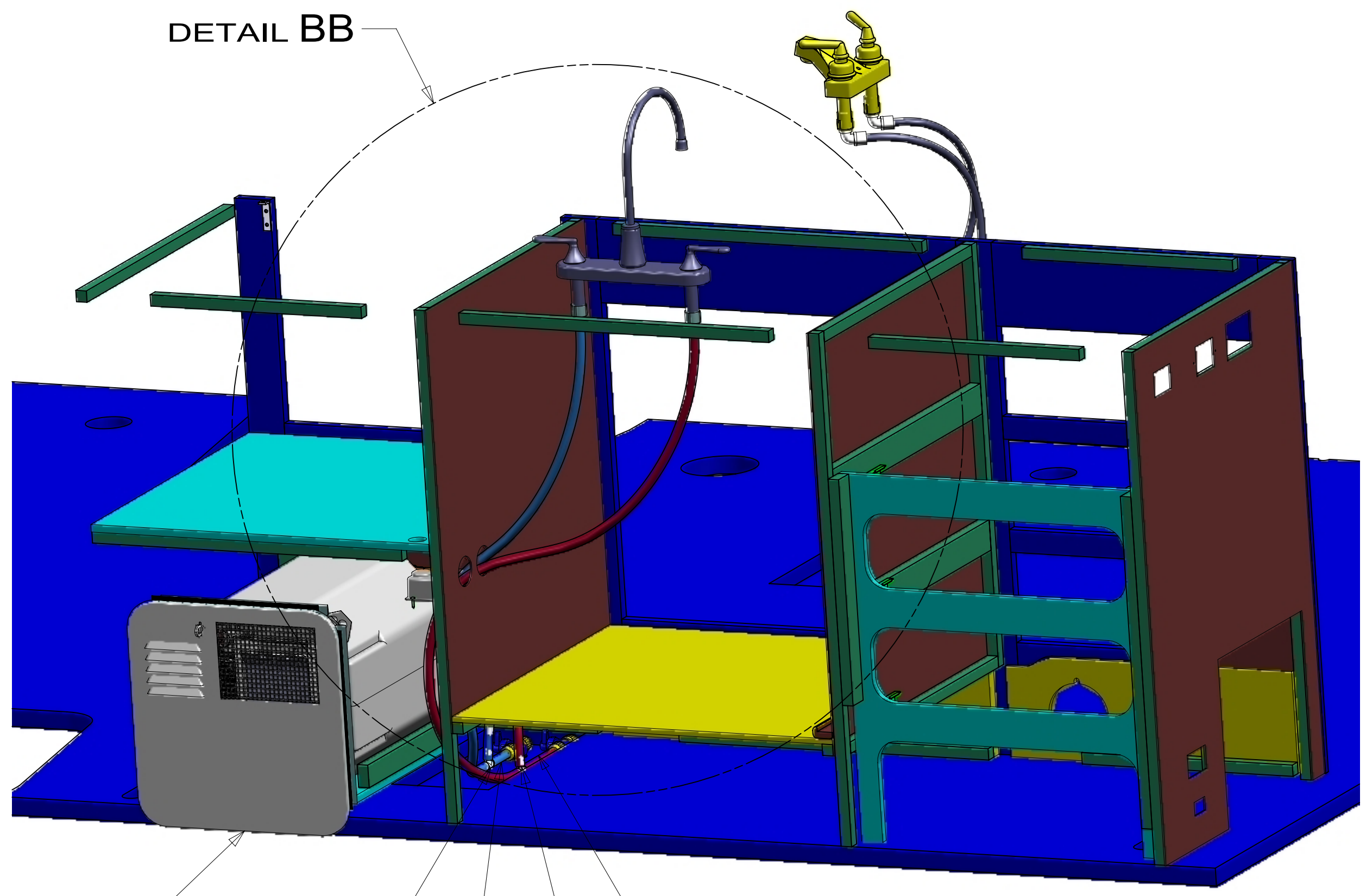
- 9 FASTEN PLATFORM TO FLOOR AFTER SIDEWALL IS SET AND HEATER IS ATTACHED TO WALL.
 8. ALL CRIMP FITTINGS TO 1/2" PEX TUBING REQUIRE 1/2" CLAMP 140171-03-000.
 7. ALL CRIMP FITTINGS TO 5/8" PEX TUBING REQUIRE 5/8" CLAMP 140171-04-000.
 6 LABEL HOT AND COLD SUPPLY TUBES AND TAPE FITTING TO TUBE BEFORE CABINET SET TO PREVENT MOVEMENT.
 5 ADD PIPE WRAP (LADDER SCRAP 110157-02-000) INSULATION.
 4 ADD TEFLON TAPE 010405-02-000.
 3. ALL TUBING TO BE SECURED AT 1200 INTERVALS MAXIMUM WITH CLAMP 010495-01-000 AND SCREW 000G67-10-12U OR EQUIVALENT.
 2. TUBING TO BE INSTALLED WITH SUFFICIENT SLOPE TO PROVIDE DRAINAGE TO NEAREST VALVE.
 1. PLASTIC FITTINGS TO BE SEALED WITH SEALANT 084456-01-000.

- 093 PREMIUM PACKAGE WITHOUT
- 09A PREMIUM PACKAGE
- 38E CONVENIENCE PACKAGE
- 640 RENTAL - GAH WITHOUT
- 644 GREAT ALASKAN RENTAL PACKAGE



DSNR:		ALL DIMENSIONS ARE IN MILLIMETERS	
DFTR:		MATERIAL:	
UNSPECIFIED TOLERANCES:			
WHOLE DIM (X)	3		
ONE-PLACE (X.X)	1.5		
TWO-PLACE (X.XX)	0.50		
ANGLE	1°		
REFER TO ES0018 FOR FASTENER TIGHTENING GUIDELINES		WEIGHT: (LBS)	FIRST USED: (REF)
DESCRIPTION: WATER SYSTEM INSTL			
SHEET:	ITEM/PART NO.:	REV:	
1 OF 4	000210048 / 30080501000		

X-X
 FOR WATER CALLOUTS SEE DWG NO. 116230-01-000

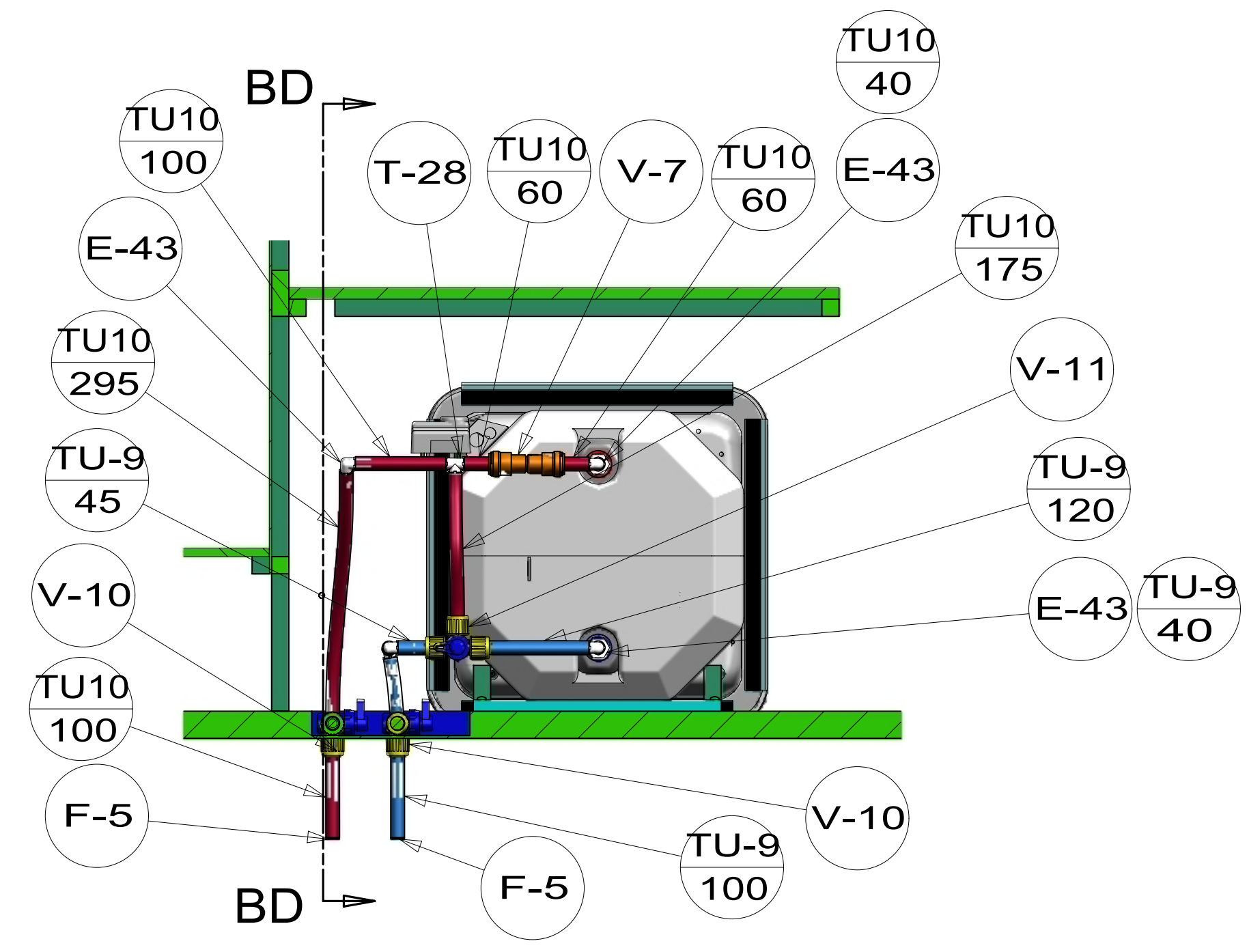


T-28 TU-9 70 T-28 TU10 125

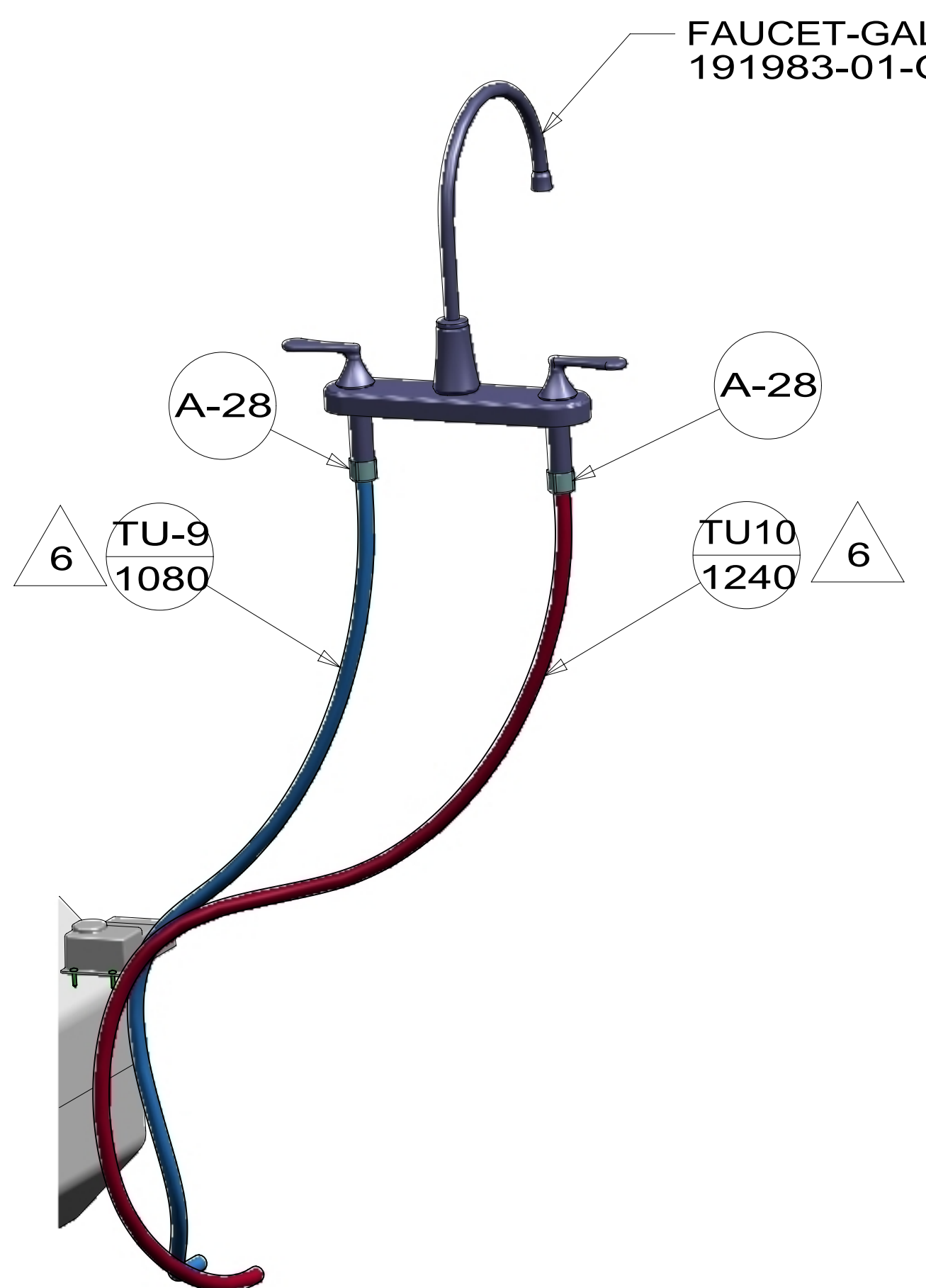
VIEW BA

- WATER HEATER INSTL-6 GAL 186899-04-000 093
- WATER HEATER INSTL-6 GAL 186899-10-000 09A
- PLATFORM 184166-01-000
- SCREW 000G67-10-16U (2)

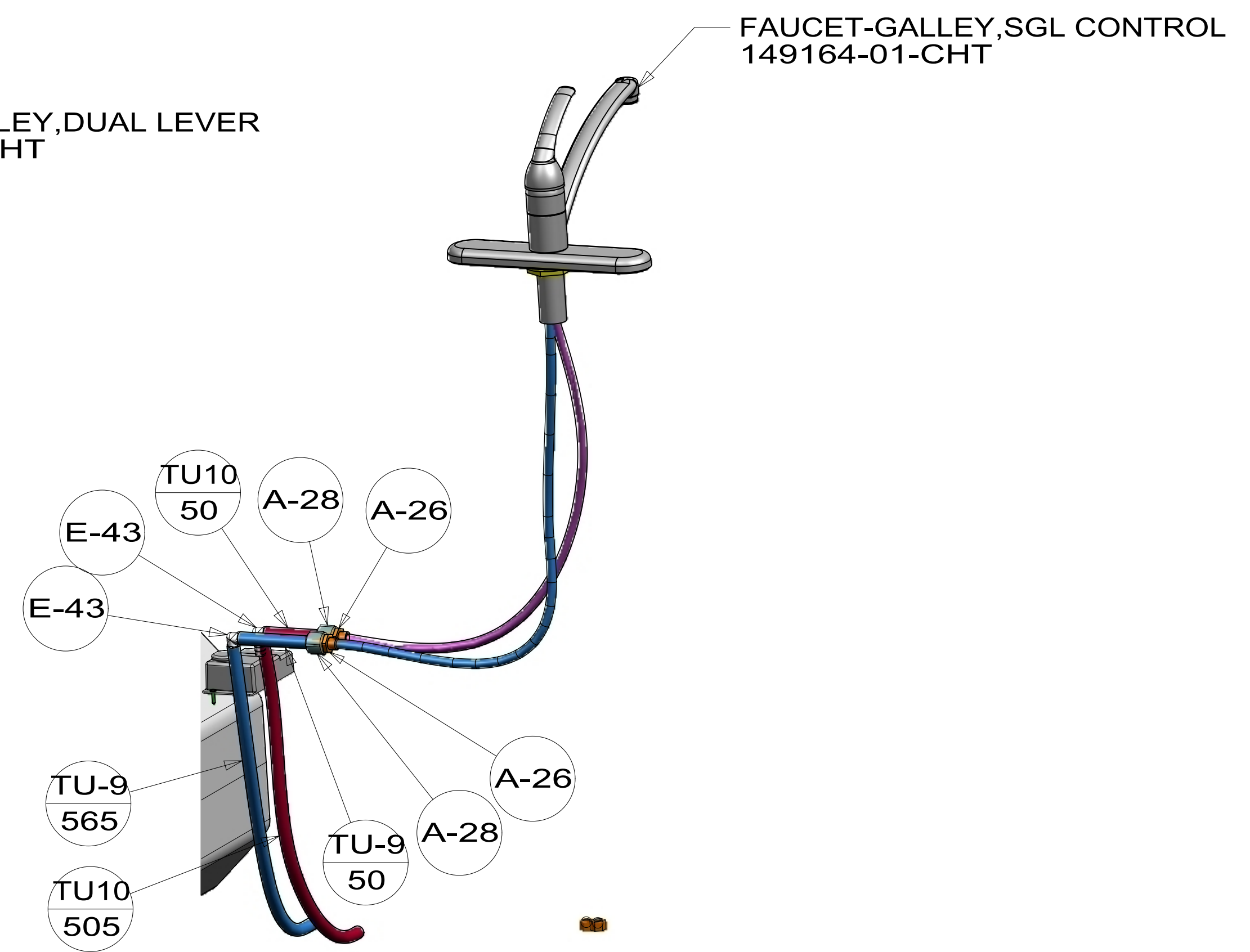
9



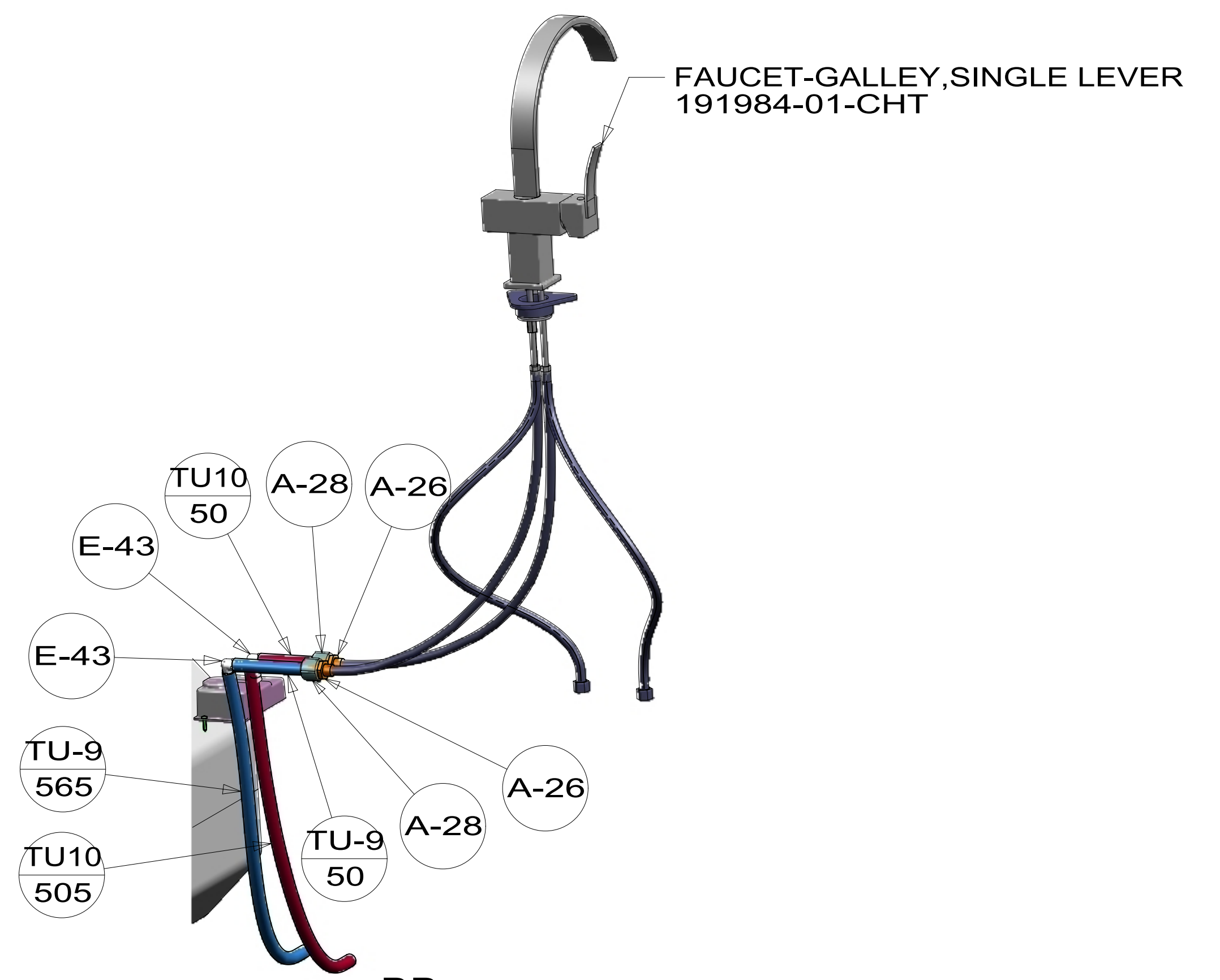
SECTION BC-BC



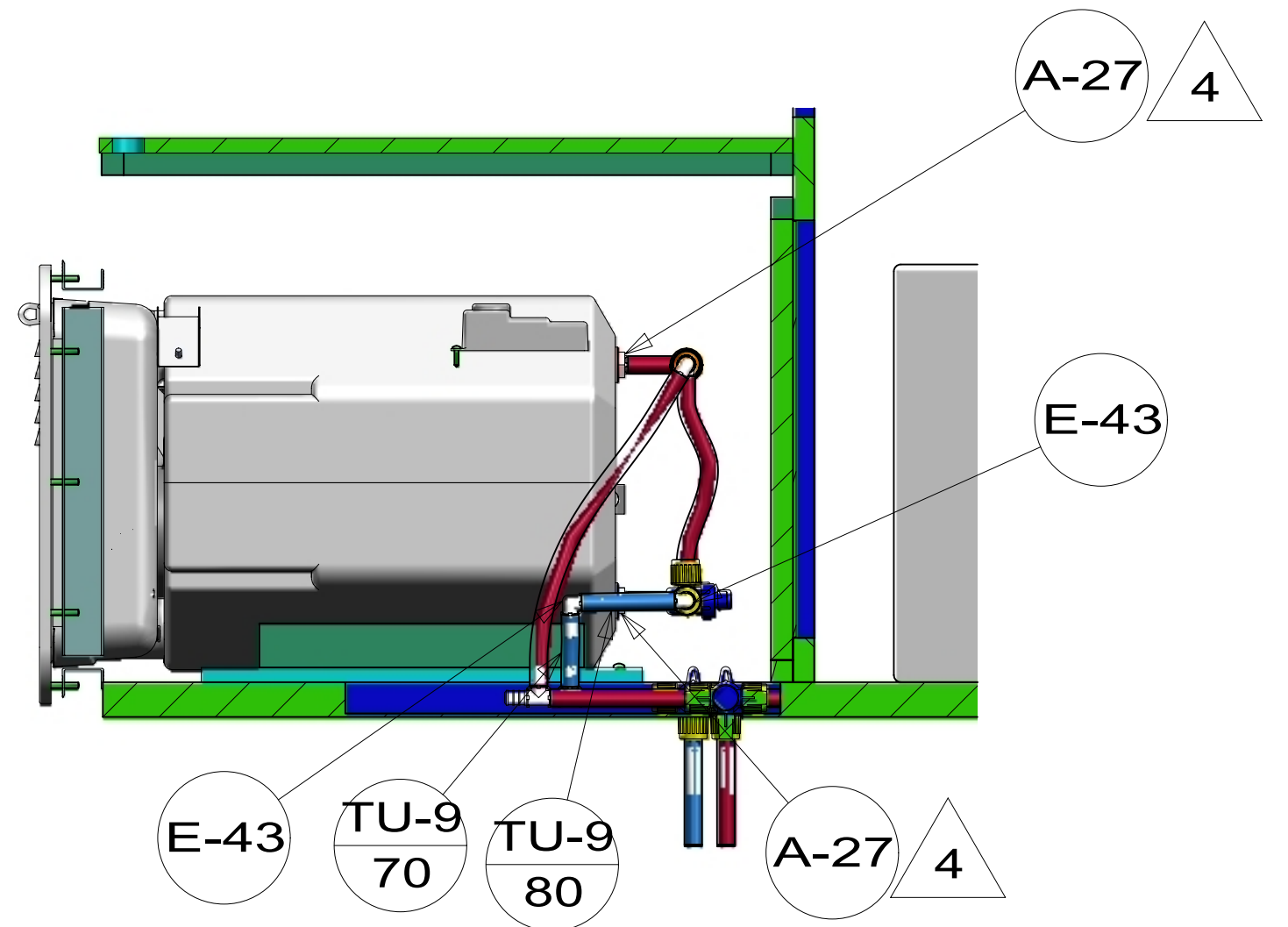
DETAIL BB (SHOWN W/O CABINETS) 640 & 093



DETAIL BB (SHOWN W/O CABINETS) 644



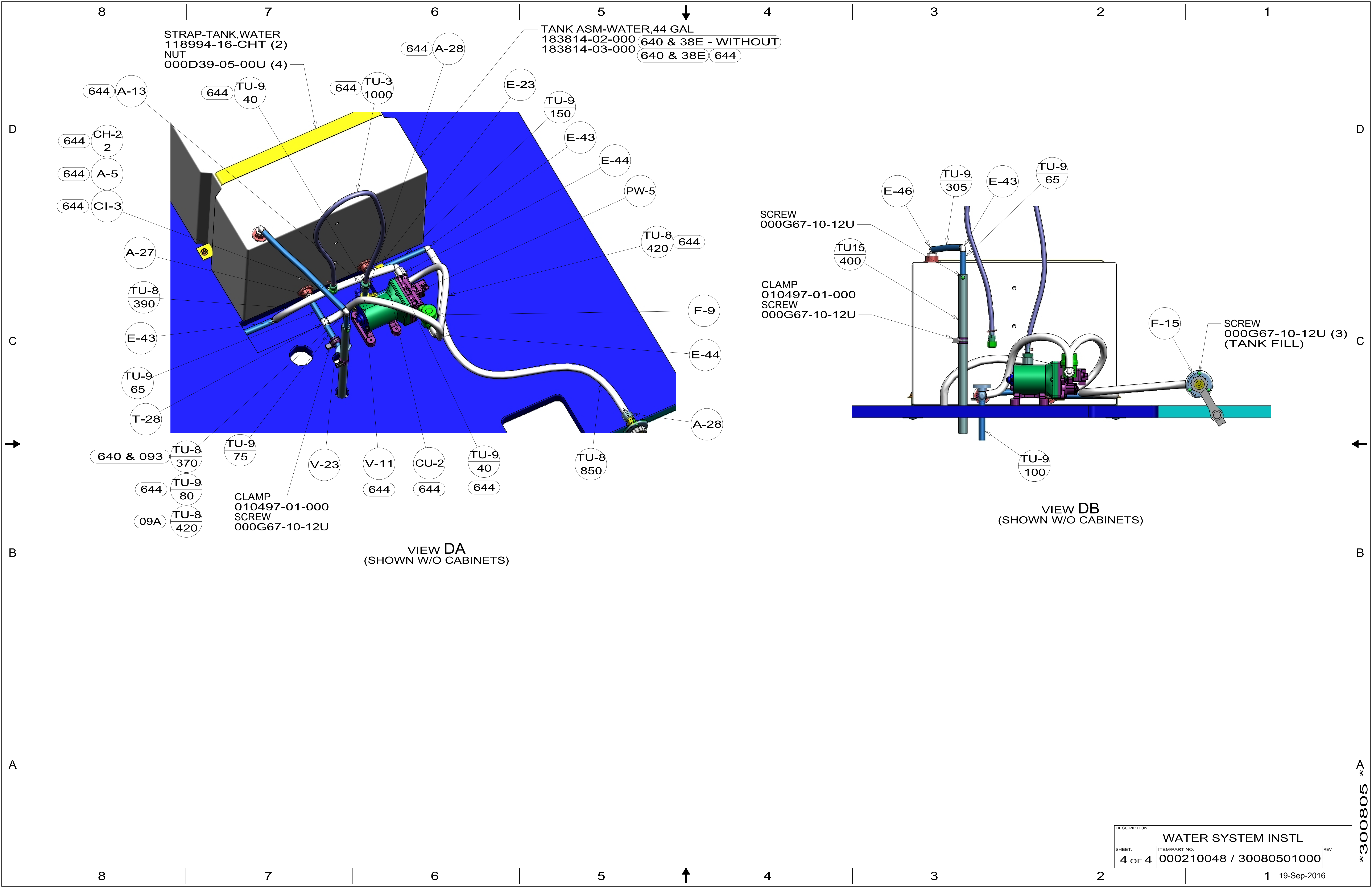
DETAIL BB (SHOWN W/O CABINETS) 640 & 09A



SECTION BD-BD

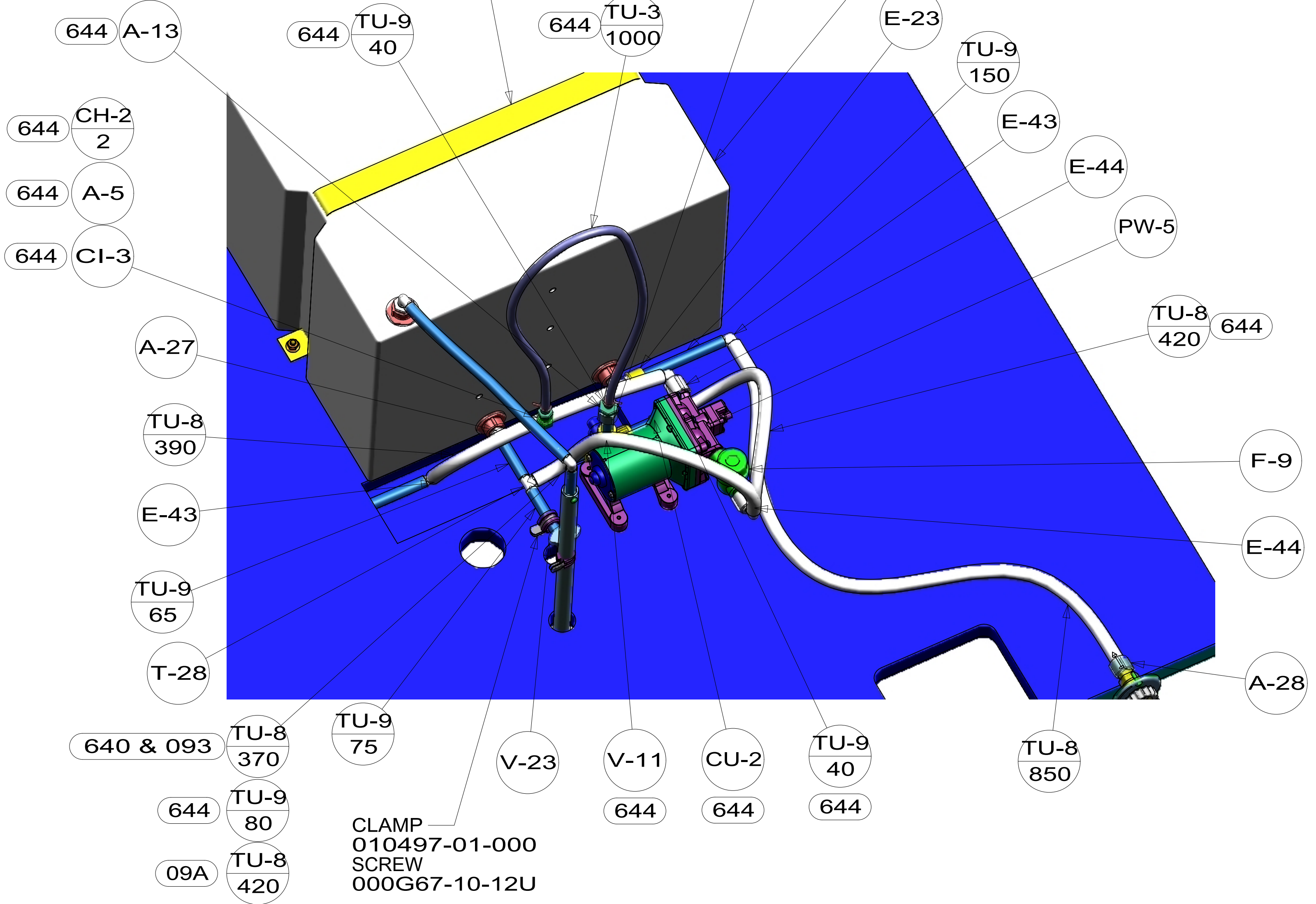
DESCRIPTION:		
WATER SYSTEM INSTL		
SHEET:	ITEM/PART NO.:	REV
2 OF 4	000210048 / 30080501000	

*300805

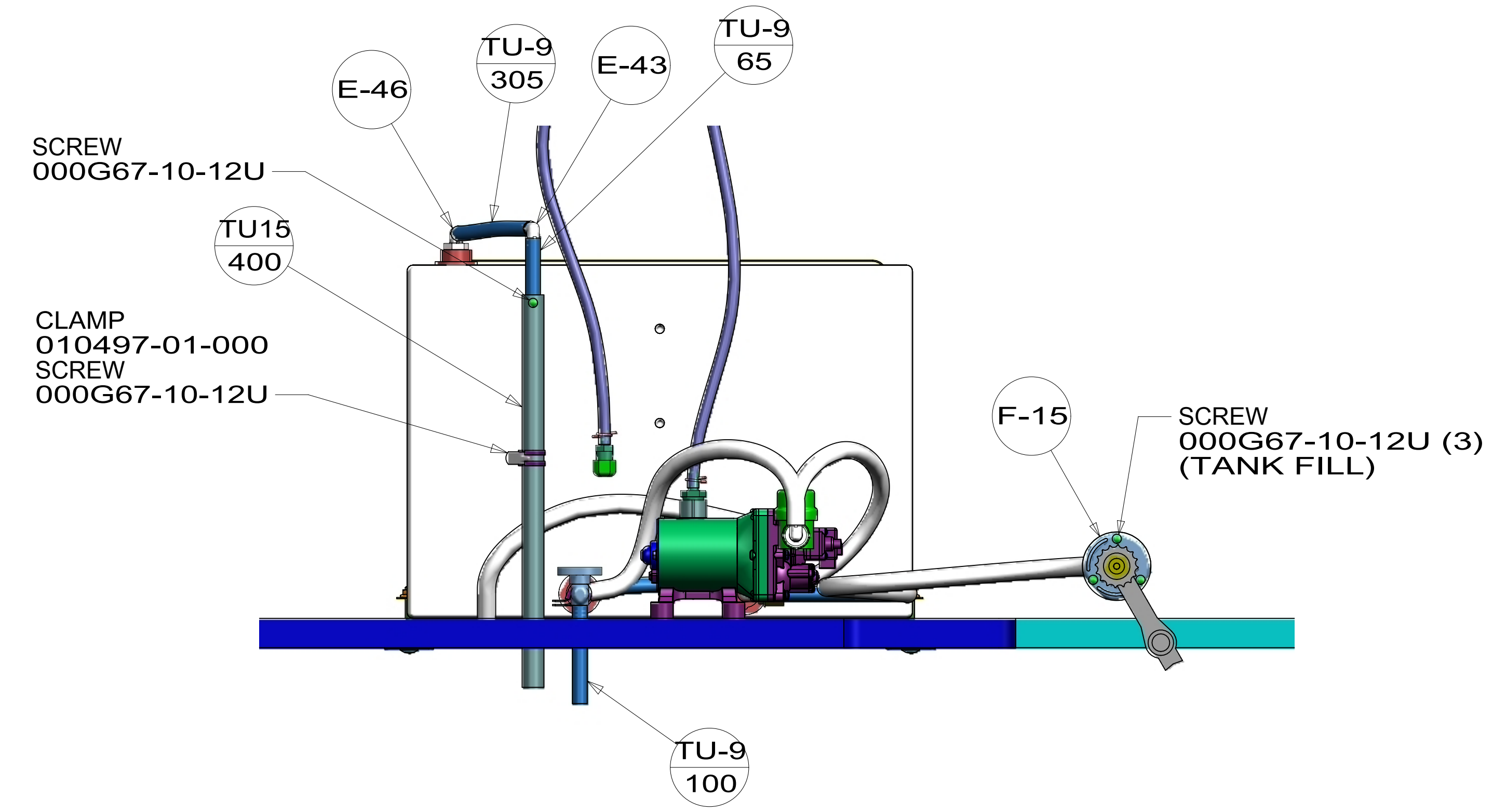


STRAP-TANK,WATER
118994-16-CHT (2)
NUT
000D39-05-00U (4)

TANK ASM-WATER,44 GAL
183814-02-000 640 & 38E - WITHOUT
183814-03-000 640 & 38E 644



VIEW DA
(SHOWN W/O CABINETS)



VIEW DB
(SHOWN W/O CABINETS)

DESCRIPTION:		
WATER SYSTEM INSTL		
SHEET:	ITEM/PART NO.:	REV
4 OF 4	000210048 / 30080501000	

300805