

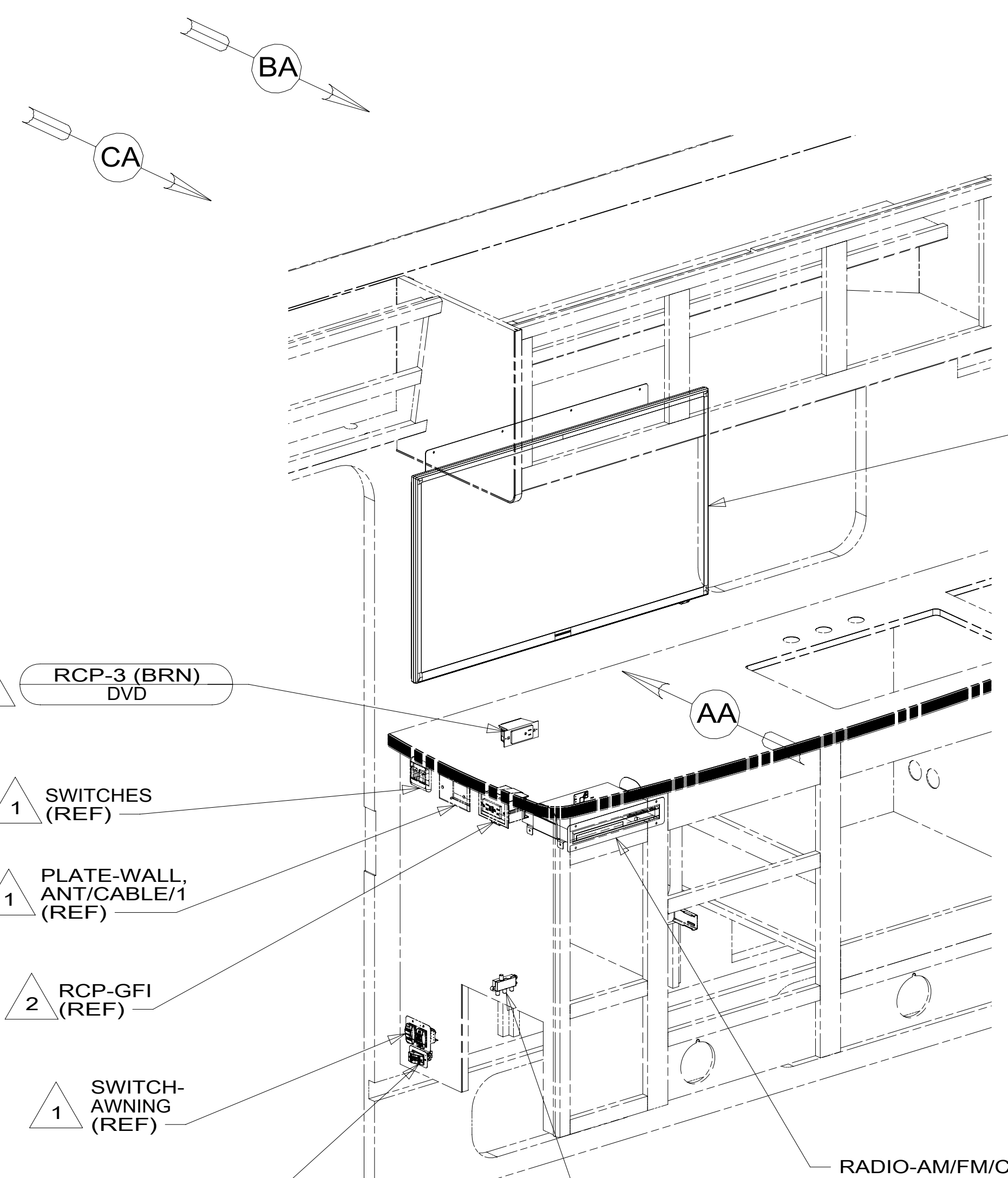
8 7 6 5 4 3 2 1

D

C

B

A



- TV-32", FLAT PANEL DLED, HDTV 194849-01-000 SCREW OMG02U-04-012 (4) (VESA MOUNT) 68Y
- TV-40", FLAT PANEL DLED, HDTV 194364-01-000 SCREW (SUPPLIED WITH TV) TV-24", FLAT PANEL DLED, HDTV 194363-01-000 SCREW OMG02U-04-012 (4) WASHER OME02U-04-071 (4) CORD-POWER, 12VDC 191991-01-000 09A
- 644

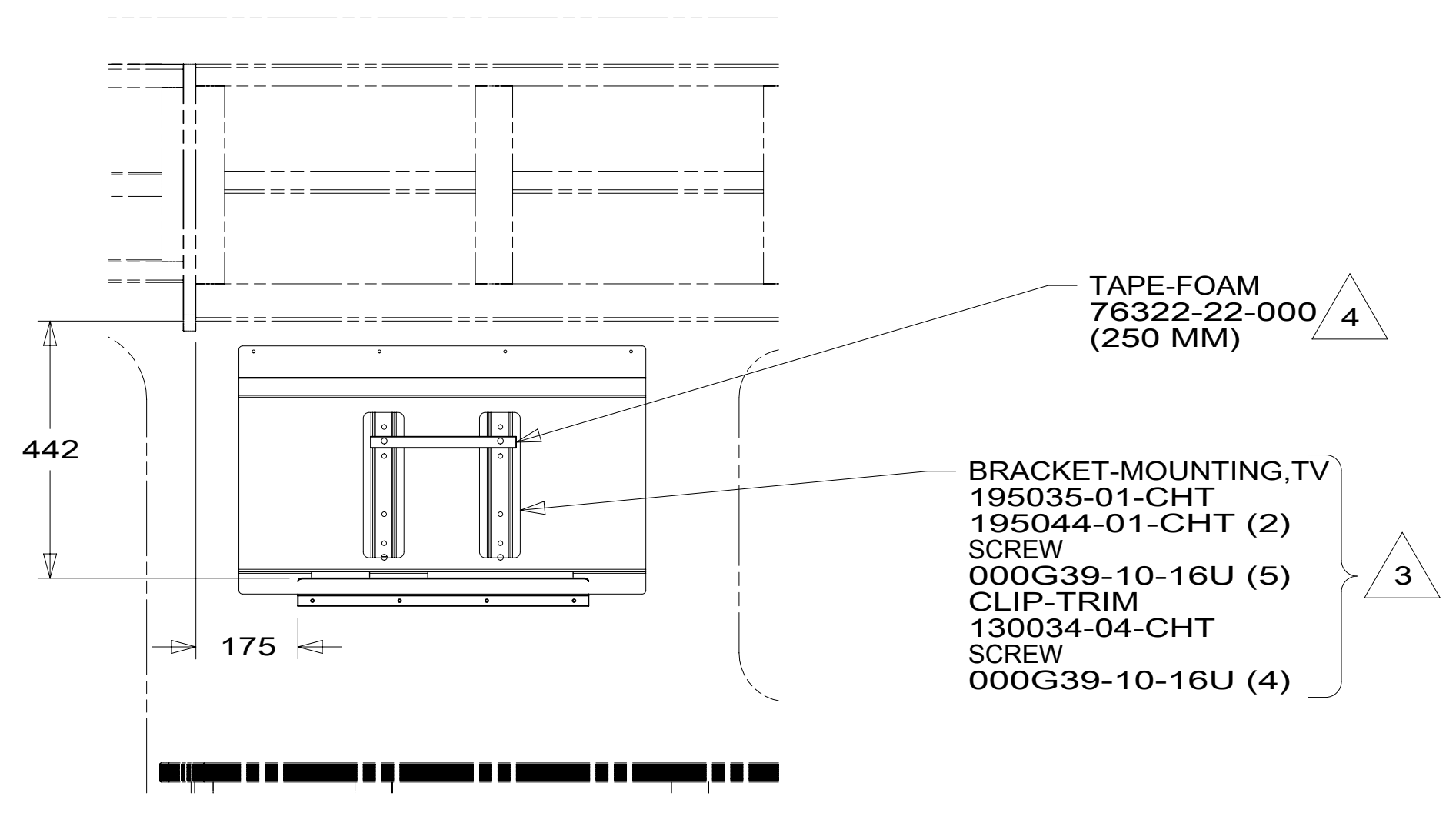
- 2 RCP-3 (BRN) DVD
- 1 SWITCHES (REF)
- 1 PLATE-WALL, ANT/CABLE/1 (REF)
- 2 RCP-GFI (REF)
- 1 SWITCH-AWNING (REF)
- 1 SWITCH-BATTERY DISCONNECT (REF)

- RADIO-AM/FM/CD/DVD/RMT 302630-01-000 BRACKET-DVD PLAYER 156586-11-CHT SUPPORT-RADIO, REAR 181725-02-CHT SCREW 000G67-10-12U (5) TRIM RING-RADIO 164740-06-CHT SCREW 000G67-10-12U (4) DVD PLAYER W/HDMI OUT 186774-01-000 TRIM RING-RADIO 164740-05-CHT SCREW 000G67-10-12U (4) BRACKET-DVD PLAYER 156586-12-CHT SCREW 000G67-10-12U (4) 644
- 68Y 09A

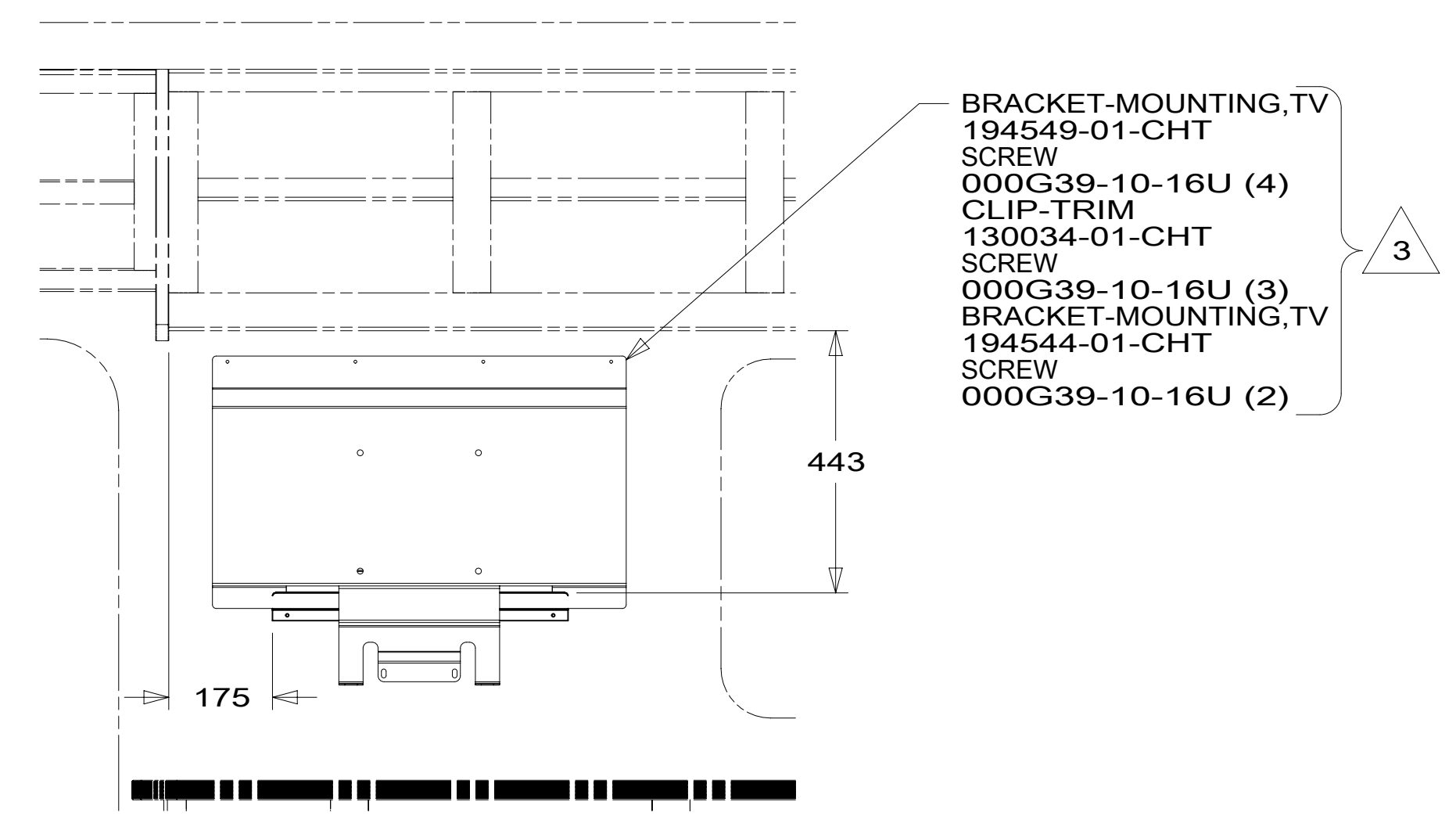
SPLITTER (REF) 1

- 4 PREP SURFACE WITH ADHESIVE PROMOTER 87211-01-000.
- 3 TV BRACKET AND CLIP TO BE CENTERED ON OVHD CABT. MOUNT CLIP AT DIMENSION SHOWN TO TOP EDGE OF CLIP.
- 2 SEE WIRING INSTL-BODY, 110V FOR ADDITIONAL INFORMATION.
- 1 SEE WIRING INSTL-BODY, 12V FOR ADDITIONAL INFORMATION.

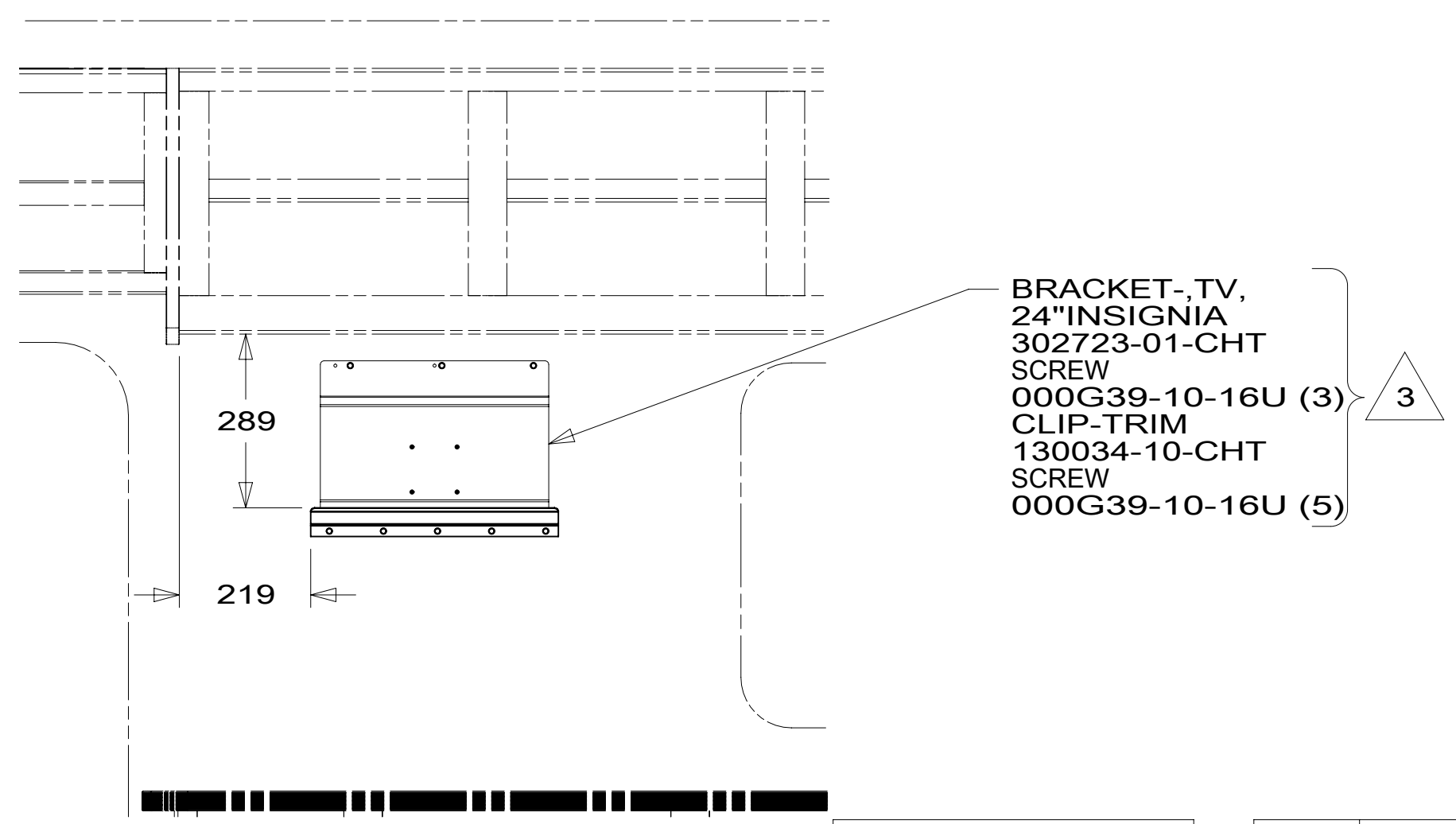
NOTES:



VIEW AA (TV NOT SHOWN) 68Y



VIEW AA (TV NOT SHOWN) 09A



VIEW AA (TV NOT SHOWN) 644

FOR ELECTRICAL TORQUE SPECIFICATIONS SEE DWG NO. 128783-01-000

FOR ELECTRICAL CALLOUTS SEE DWG NO. 121339-01-000

- 68Y TV - MAIN
- 644 GREAT ALASKAN RENTAL PACKAGE
- 09A PREMIUM PACKAGE
- 265 CODES/STANDARDS-CSA/CMVSS
- 1B1 CODES/STANDARDS USA

- 1B1 265



DSNR:	ALL DIMENSIONS ARE IN MILLIMETERS	
DIFTR:		
UNSPECIFIED TOLERANCES:	MATERIAL:	
WHOLE DIM (X) : 3		
ONE-PLACE (X.X) : 1.5		
TWO-PLACE (X.XX) : 0.50		
ANGLE : 1°		
REFER TO ES0018 FOR FASTENER TIGHTENING GUIDELINES	WEIGHT: (LBS)	FIRST USED: 16 331K

DESCRIPTION: WIRING INSTL-TV/DVD		
SHEET: 1 OF 4	ITEM/PART NO: 000210042 / 30076401000	REV:

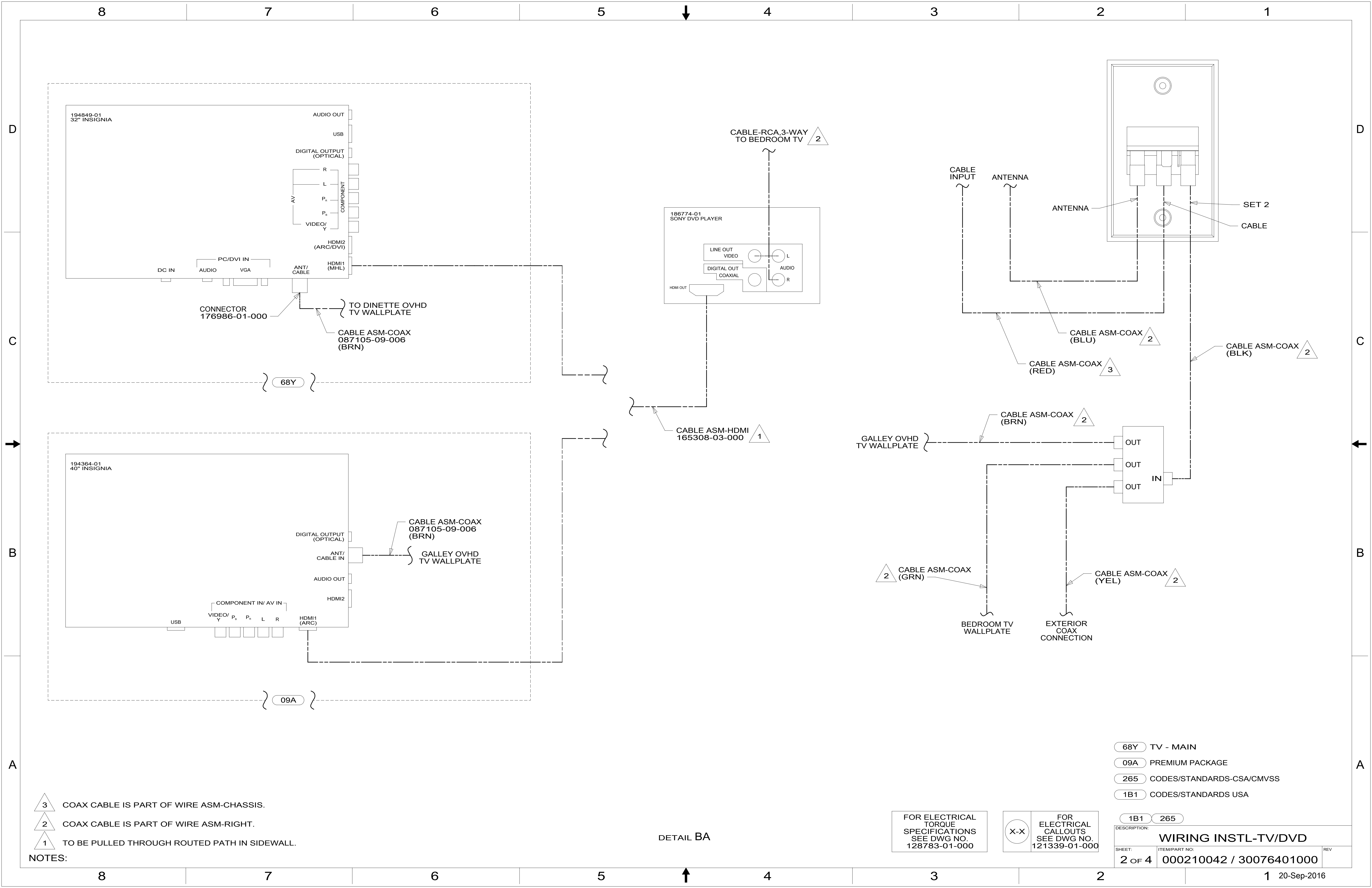
8 7 6 5 4 3 2 1

D

C

B

A



- NOTES:
- 3 COAX CABLE IS PART OF WIRE ASM-CHASSIS.
 - 2 COAX CABLE IS PART OF WIRE ASM-RIGHT.
 - 1 TO BE PULLED THROUGH ROUTED PATH IN SIDEWALL.

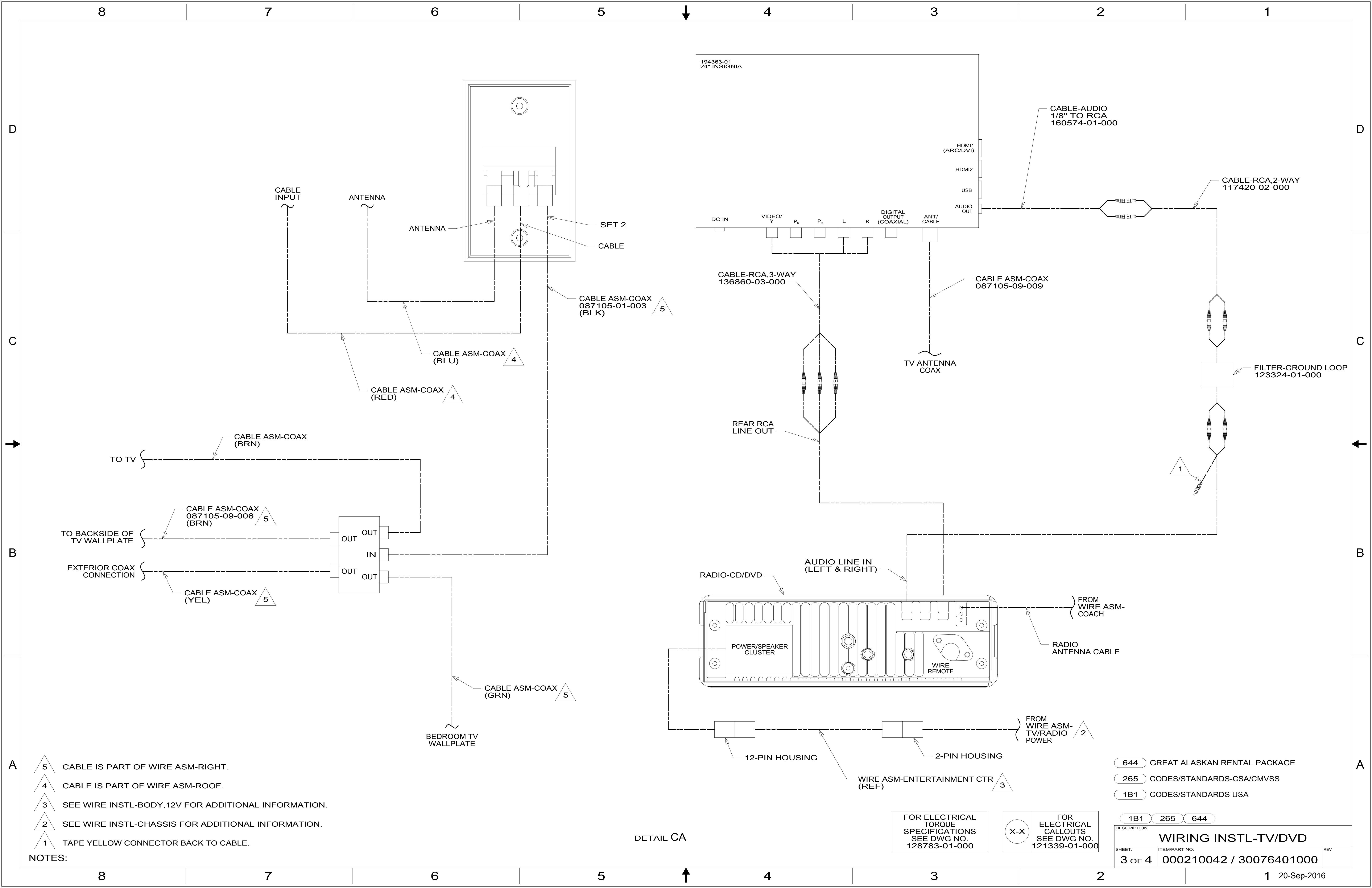
DETAIL BA

FOR ELECTRICAL TORQUE SPECIFICATIONS SEE DWG NO. 128783-01-000

FOR ELECTRICAL CALLOUTS SEE DWG NO. 121339-01-000

- 68Y TV - MAIN
- 09A PREMIUM PACKAGE
- 265 CODES/STANDARDS-CSA/CMVSS
- 1B1 CODES/STANDARDS USA

DESCRIPTION:		WIRING INSTL-TV/DVD	
SHEET:	ITEM/PART NO.:	REV	
2 OF 4	000210042 / 30076401000		



- NOTES:
- 5 CABLE IS PART OF WIRE ASM-RIGHT.
 - 4 CABLE IS PART OF WIRE ASM-ROOF.
 - 3 SEE WIRE INSTL-BODY, 12V FOR ADDITIONAL INFORMATION.
 - 2 SEE WIRE INSTL-CHASSIS FOR ADDITIONAL INFORMATION.
 - 1 TAPE YELLOW CONNECTOR BACK TO CABLE.

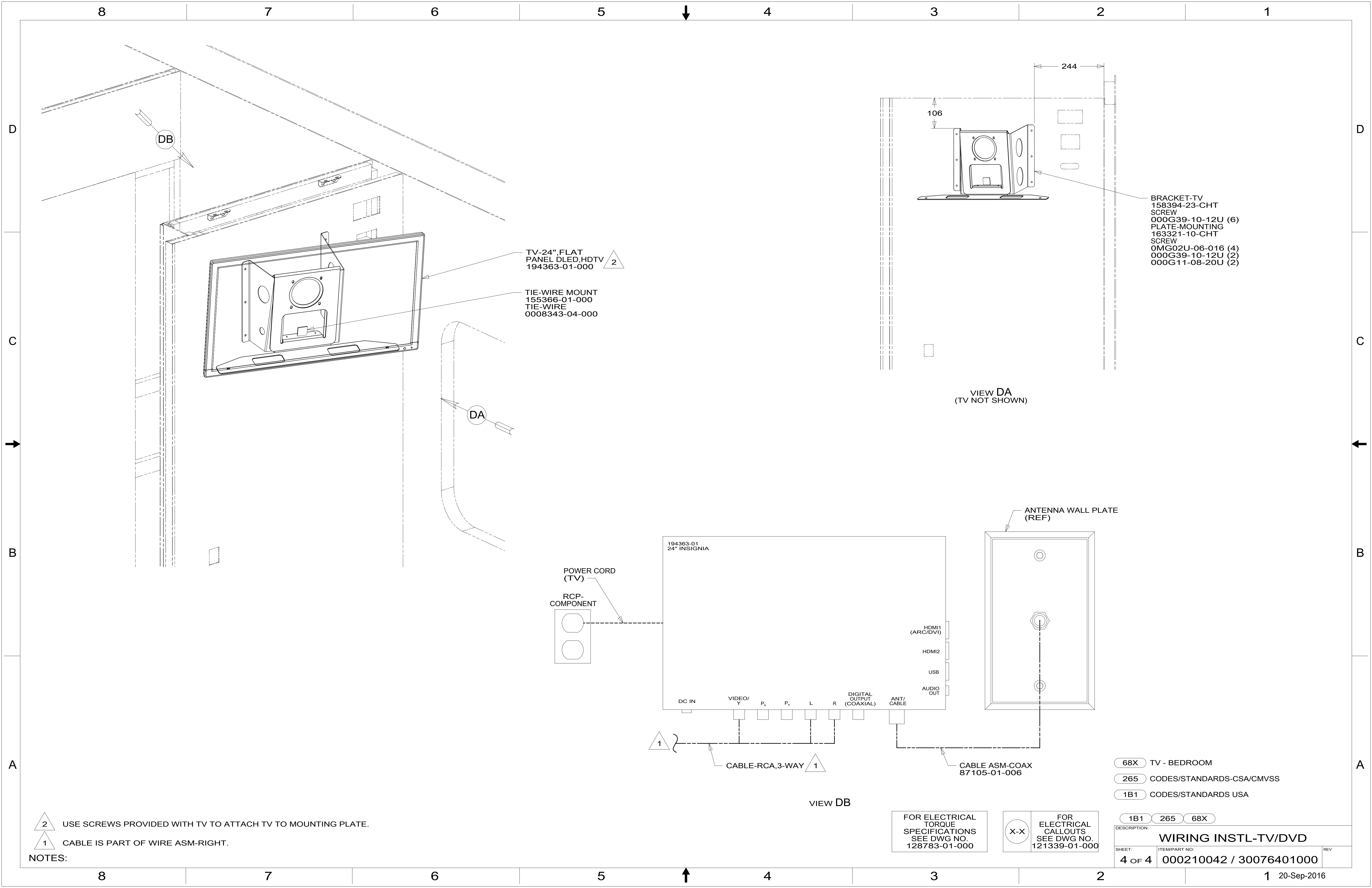
DETAIL CA

FOR ELECTRICAL TORQUE SPECIFICATIONS SEE DWG NO. 128783-01-000

FOR ELECTRICAL CALLOUTS SEE DWG NO. 121339-01-000

- 644 GREAT ALASKAN RENTAL PACKAGE
- 265 CODES/STANDARDS-CSA/CMVSS
- 1B1 CODES/STANDARDS USA

DESCRIPTION:	1B1 265 644	
WIRING INSTL-TV/DVD		
SHEET:	ITEM/PART NO.:	REV
3 OF 4	000210042 / 30076401000	

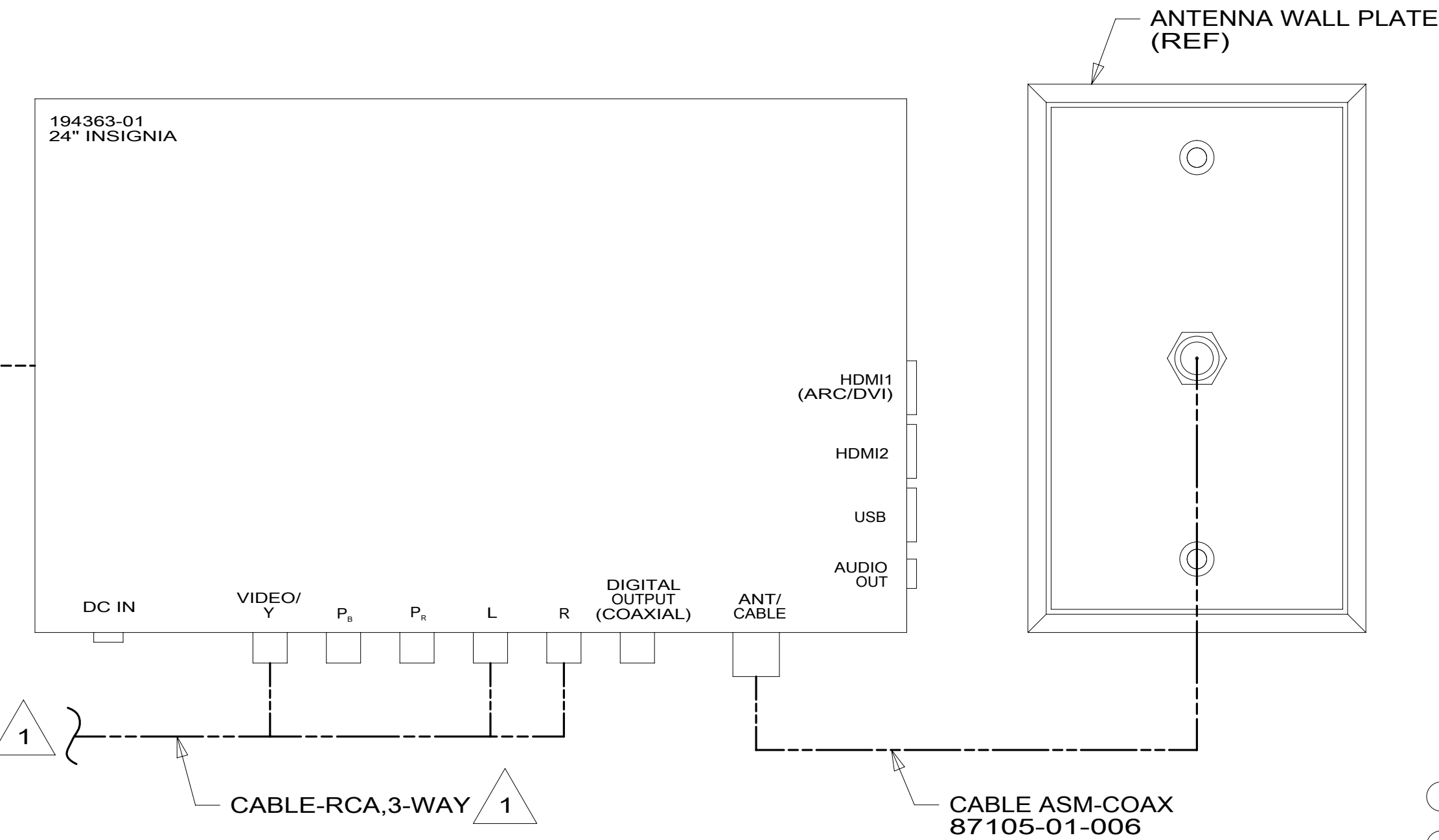
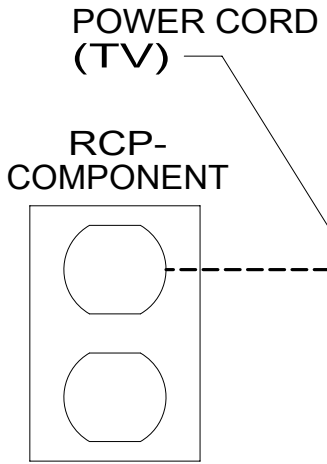


TV-24" FLAT
PANEL DLED,HDTV
194363-01-000 2

TIE-WIRE MOUNT
155366-01-000
TIE-WIRE
0008343-04-000

BRACKET-TV
158394-23-CHT
SCREW
000G39-10-12U (6)
PLATE-MOUNTING
163321-10-CHT
SCREW
0MG02U-06-016 (4)
000G39-10-12U (2)
000G11-08-20U (2)

VIEW DA
(TV NOT SHOWN)



VIEW DB

- 2 USE SCREWS PROVIDED WITH TV TO ATTACH TV TO MOUNTING PLATE.
1 CABLE IS PART OF WIRE ASM-RIGHT.

NOTES:

FOR ELECTRICAL
TORQUE
SPECIFICATIONS
SEE DWG NO.
128783-01-000

FOR ELECTRICAL
CALLOUTS
SEE DWG NO.
121339-01-000

- 68X TV - BEDROOM
- 265 CODES/STANDARDS-CSA/CMVSS
- 1B1 CODES/STANDARDS USA

1B1 265 68X		
DESCRIPTION: WIRING INSTL-TV/DVD		
SHEET:	ITEM/PART NO.:	REV:
4 OF 4	000210042 / 30076401000	