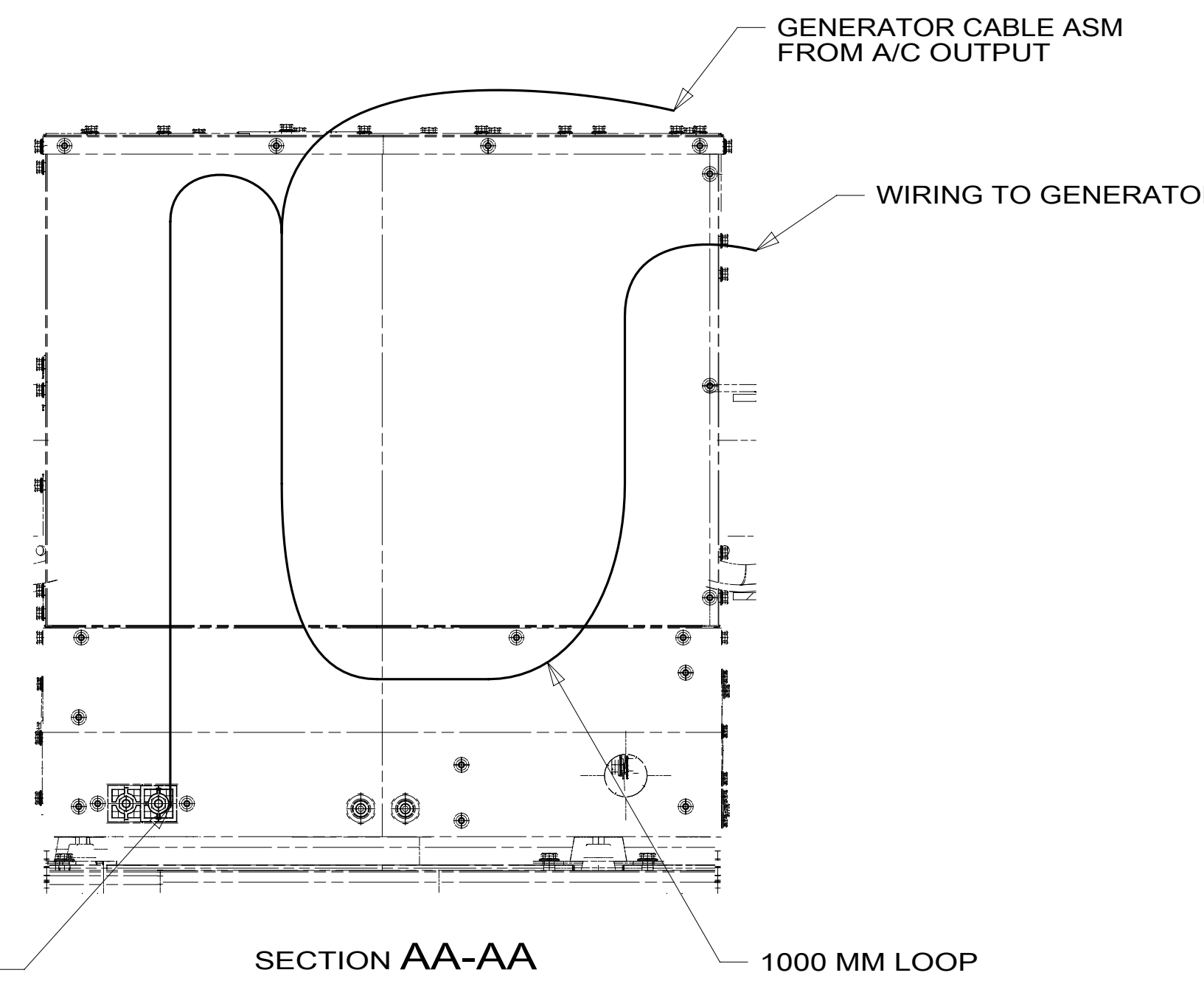


- 9 MHP TO INSTALL ON VALVE STEMS PER MANUFACTURING INSTRUCTIONS.
- 8 MOUNT ANTENNA WITH SUPPLIED BRACKET. ROUTE ANTENNA WIRE ALONG D/S FRAME RAIL AND SECURE WITH OTHER LOOMS. ROUTE UP D/S A-PILLAR AND COIL EXCESS AT TOP.
- 7 REST WIRE IN FRAME RAIL WHEN APPLICABLE.
- 6 CLAMP 83610-01-000, SCREW G39-08-12B
- 5 CLAMP 10497-03-000, SCREW G39-08-12B
- 4 USE TIE-WIRE 8343-04-000 TO SECURE WIRES TO FLOOR SUPPORT FRAME AT LEAST ONCE EVERY 600MM.
- 3 SEE BATTERY INSTL FOR ADDITIONAL INFORMATION.
- 2 SEE WIRING INSTL-FRONT END FOR ADDITIONAL INFORMATION.
- 1 SEE WIRE ASM-CHASSIS FOR ADDITIONAL INFORMATION.

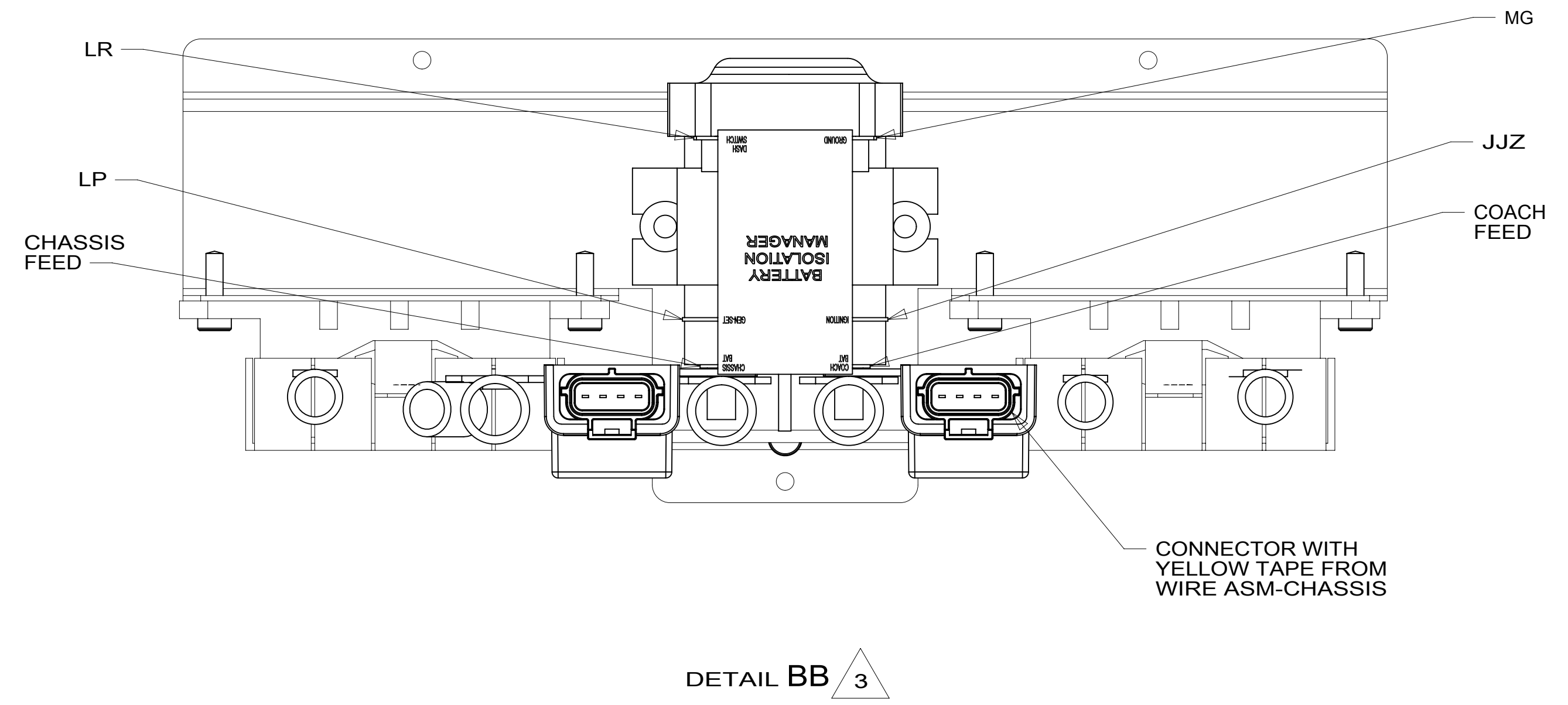
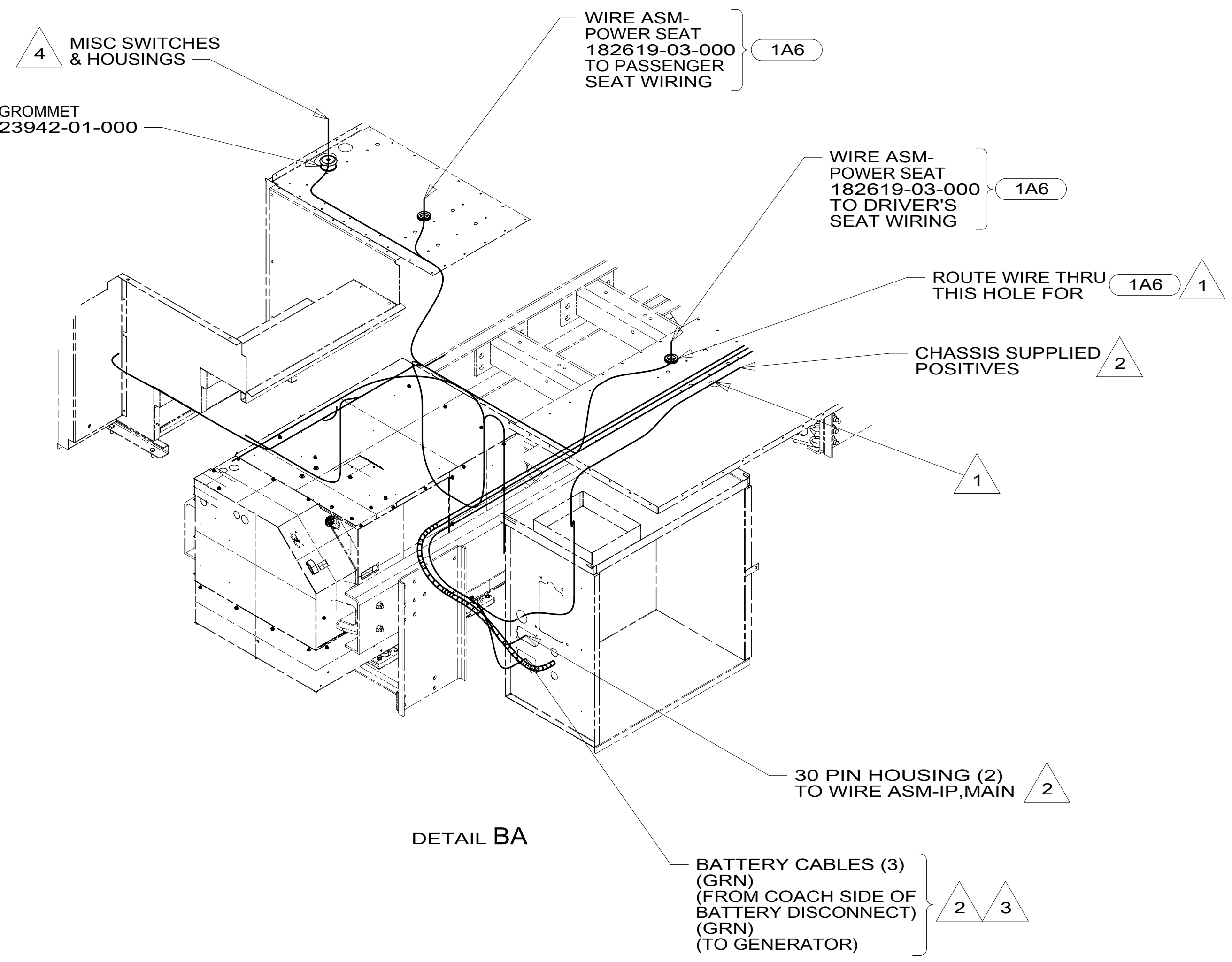


38M TIRE MONITORING SYSTEM	
265 CODES/STANDARDS-CSA/CMVSS	
1B1 CODES/STANDARDS USA	
1B1 265	
<b>WINNEBAGO</b> COPYRIGHT 2016 WINNEBAGO INDUSTRIES, INC.	
DSNR:	ALL DIMENSIONS ARE IN MILLIMETERS
DFFR:	MATERIAL:
UNSPECIFIED TOLERANCES:	WEIGHT: (LBS)
WHOLE DIM (X) : 3	FIRST USED:
ONE-PLACE (X.X) : 1.5	16 R45RL
TWO-PLACE (X.XX) : 0.50	
ANGLE : 1°	
REFER TO ES0018 FOR FASTENER TIGHTENING GUIDELINES	
DESCRIPTION: <b>WIRING INSTL-CHASSIS</b>	
SHEET: 1 OF 3	ITEM/PART NO: 000209847 / 30238001000
REF:	REV: 1 23-Nov-2016

FOR ELECTRICAL TORQUE SPECIFICATIONS SEE DWG NO. 128783-01-000

FOR ELECTRICAL CALLOUTS SEE DWG NO. 121339-01-000

8 7 6 5 4 3 2 1



- NOTES:
- 4 SEE WIRE ASM-CHASSIS FOR ADDITIONAL INFORMATION.
  - 3 SEE BATTERY INSTL FOR ADDITIONAL INFORMATION.
  - 2 SEE WIRING INSTL-FRONT END FOR ADDITIONAL INFORMATION.
  - 1 USE PLUG-PLASTIC 61420-12-000 FOR UNUSED HOLE & SEAL.

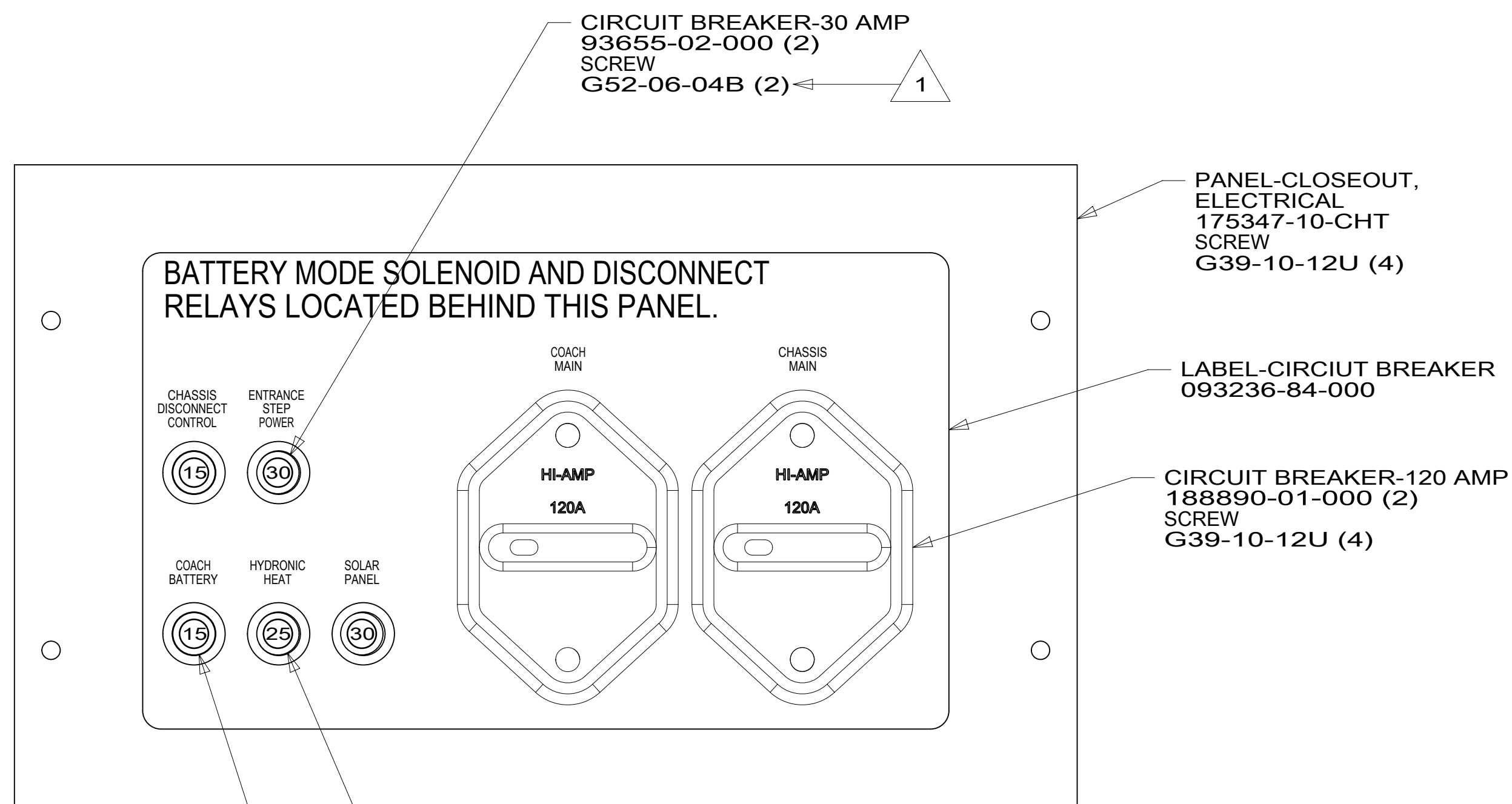
- 1A6 SEATS-DRIVER/PASSENGER
- 265 CODES/STANDARDS-CSA/CMVSS
- 1B1 CODES/STANDARDS USA

FOR ELECTRICAL TORQUE SPECIFICATIONS SEE DWG NO. 128783-01-000

FOR ELECTRICAL CALLOUTS SEE DWG NO. 121339-01-000

DESCRIPTION: <b>WIRING INSTL-CHASSIS</b>		
SHEET: 2 OF 3	ITEM/PART NO: 000209847 / 30238001000	REV

8 7 6 5 4 3 2 1 23-Nov-2016



CIRCUIT BREAKER-30 AMP  
93655-02-000 (2)  
SCREW  
G52-06-04B (2) ← 1

PANEL-CLOSEOUT,  
ELECTRICAL  
175347-10-CHT  
SCREW  
G39-10-12U (4)

LABEL-CIRCUIT BREAKER  
093236-84-000

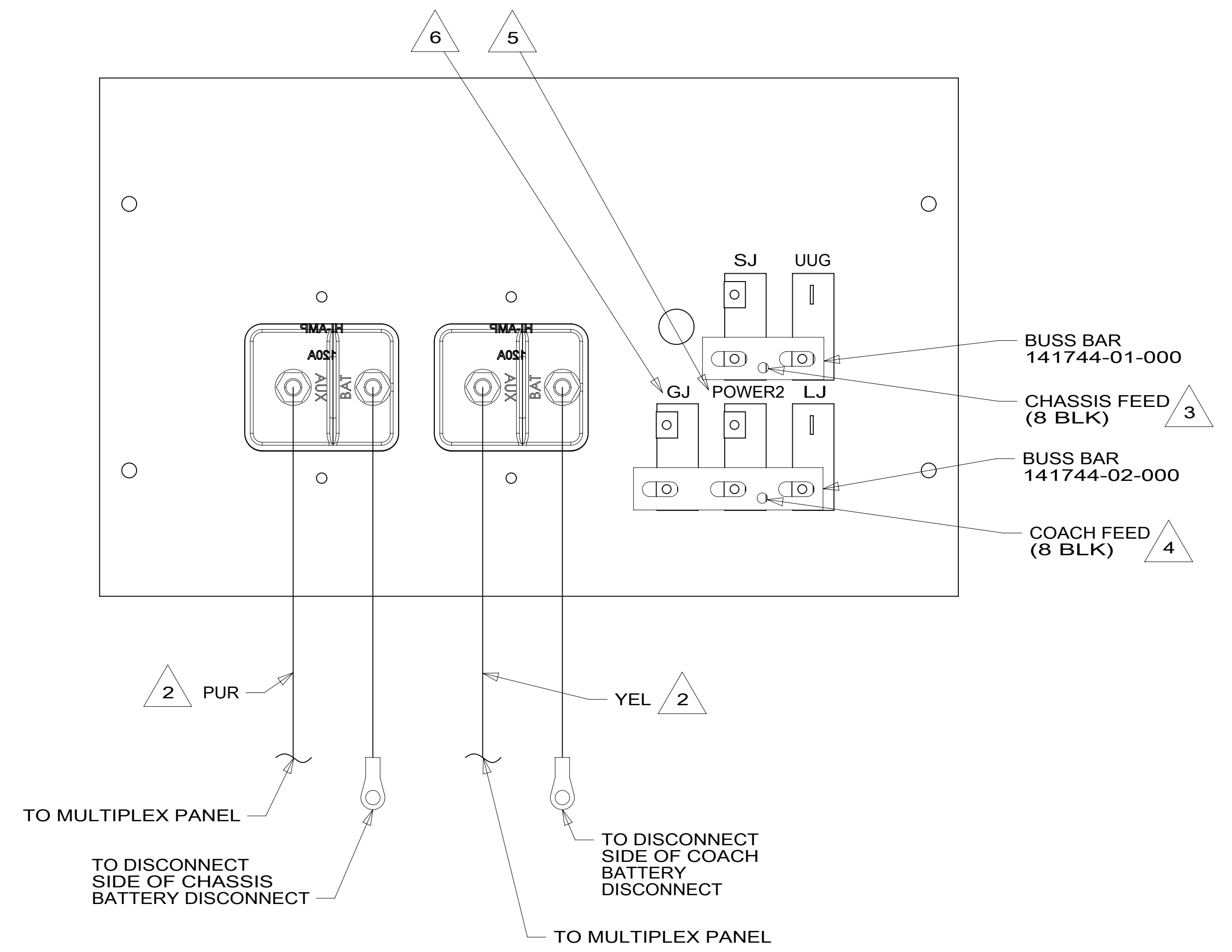
CIRCUIT BREAKER-120 AMP  
188890-01-000 (2)  
SCREW  
G39-10-12U (4)

CIRCUIT BREAKER-25 AMP  
93655-01-000  
SCREW  
G52-06-04B ← 1

CIRCUIT BREAKER-15 AMP  
93654-02-000 (2)  
SCREW  
G52-06-05B (2) ← 1

RELAY  
63912-02-000  
SCREW  
G39-08-08B

DETAIL CA



BUSS BAR  
141744-01-000

CHASSIS FEED  
(8 BLK) ← 3

BUSS BAR  
141744-02-000

COACH FEED  
(8 BLK) ← 4

← 2 PUR

← 2 YEL

TO MULTIPLEX PANEL

TO DISCONNECT  
SIDE OF CHASSIS  
BATTERY DISCONNECT

TO DISCONNECT  
SIDE OF COACH  
BATTERY DISCONNECT

TO MULTIPLEX PANEL

DETAIL CB

- NOTES:
- 6 MARKED WITH WHITE TAPE.
  - 5 MARKED WITH GREEN TAPE.
  - 4 MARKED WITH YELLOW TAPE.
  - 3 MARKED WITH BLUE TAPE.
  - 2 SEE BATTERY INSTL FOR ADDITIONAL INFORMATION.
  - 1 REPLACE EXISTING SCREW TO PROPERLY ATTACH BREAKER TO BUSS BAR.

265 CODES/STANDARDS-CSA/CMVSS  
1B1 CODES/STANDARDS USA

FOR ELECTRICAL  
TORQUE  
SPECIFICATIONS  
SEE DWG NO.  
128783-01-000

FOR ELECTRICAL  
CALLOUTS  
SEE DWG NO.  
121339-01-000

DESCRIPTION: <b>WIRING INSTL-CHASSIS</b>	
SHEET: 3 OF 3	ITEM/PART NO: 000209847 / 30238001000
REV 1 23-Nov-2016	