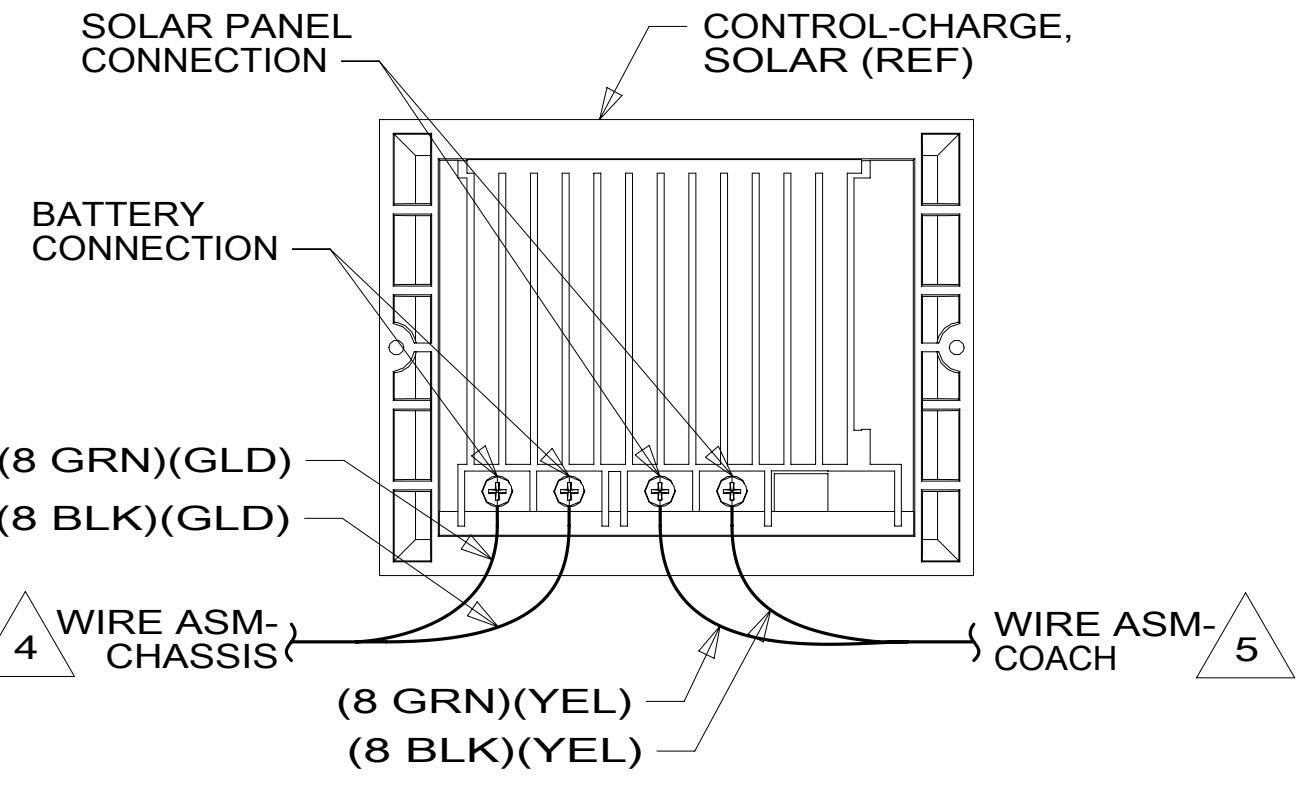


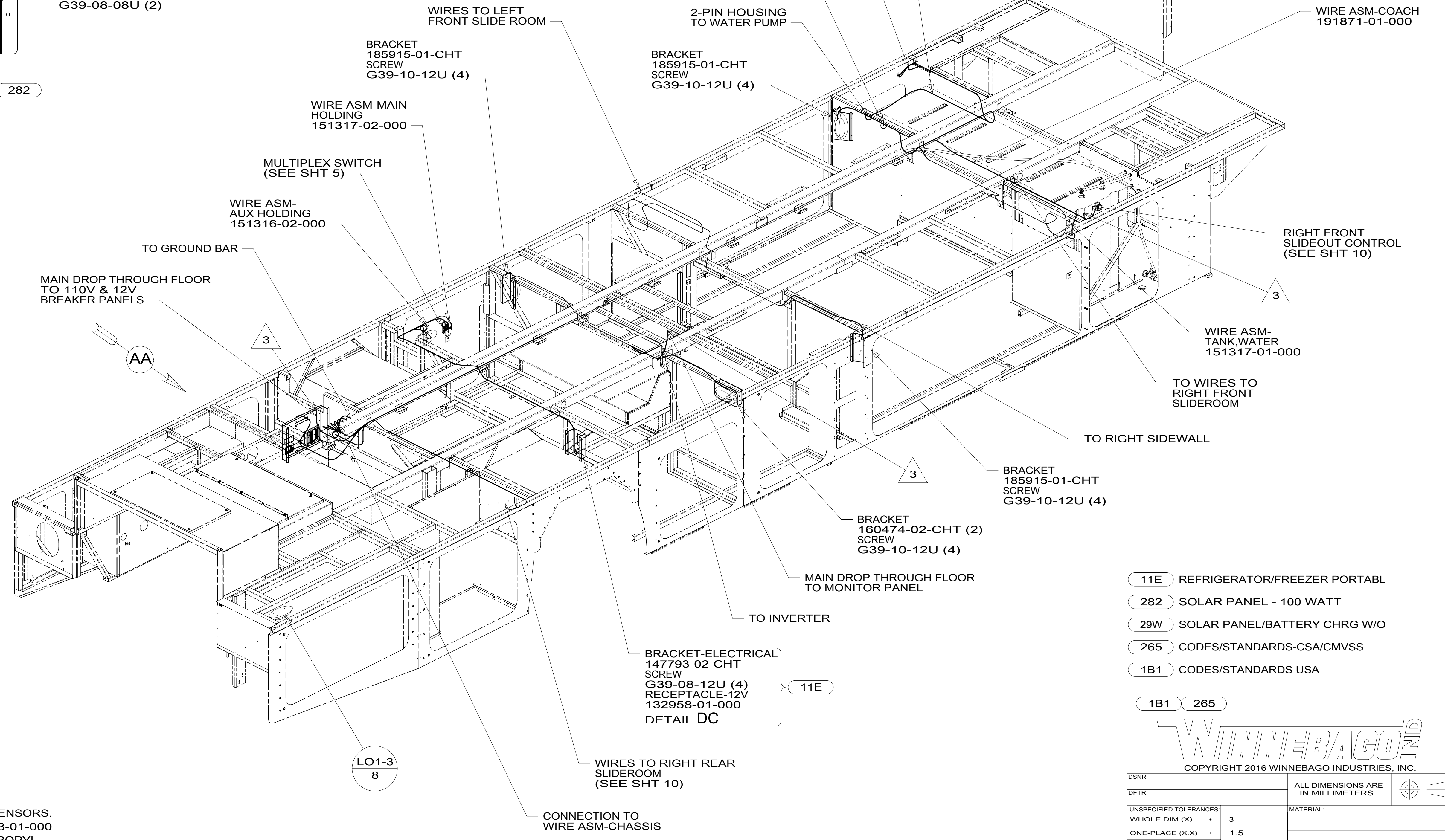
- PANEL-LIGHT
132862-14-CHT (29W)
132862-15-CHT (282)
SCREW
G39-10-12U (4)
- PORT-SOLAR,SINGLE
191558-01-000 (282)
- PLATE-WALL
149557-03-CHT
SCREW
G39-08-08U (2)

CONTROL-CHARGE,
SOLAR 30 AMP
191278-01-000 (282)
DETAIL AB

VIEW AA



DETAIL AB



- 5 WIRE TO BE MARKED BY WRAP OF YEL TAPE 19 MM WIDE WITHIN 50 MM OF END.
- 4 WIRE TO BE MARKED BY WRAP OF GRN TAPE 19 MM WIDE WITHIN 50 MM OF END.
- 3 WIRE PASSES UP THROUGH FLOOR IN THIS AREA.

2. ROUTE TANK SENSOR WIRES SO THEY DO NOT PASS OVER SENSORS. USE WIRE TIE MOUNT 155366-01-000 AND WIRE TIE 8343-01-000 AS NEEDED. TANK SURFACE MUST BE CLEANED USING ISOPROPYL ALCOHOL AND PRIMED WITH PRIMER 94.

1. AT MINIMUM ALL WIRES TO BE SUPPORTED AND SECURED PER CODE REQUIREMENTS. USE CLAMP 10495 OR 10497 OR WIRE TIE 8343 OR 108046 AND SCREW G67-XX-XXX OR G56-XX-XXX AS APPROPRIATE FOR INSTALLATION.

NOTES:

FOR ELECTRICAL TORQUE SPECIFICATIONS SEE DWG NO. 128783-01-000

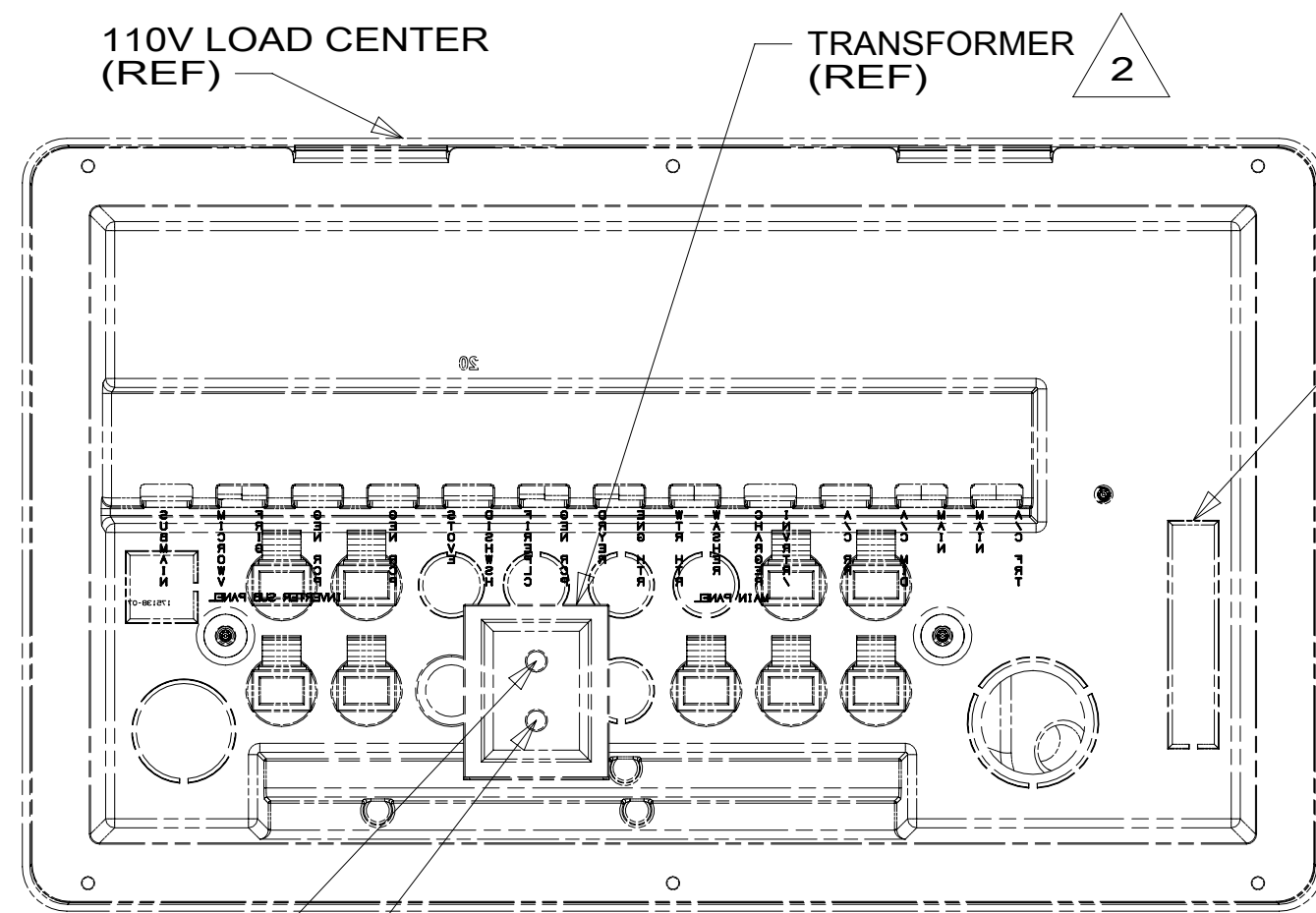
FOR ELECTRICAL CALLOUTS SEE DWG NO. 121339-01-000

- 11E REFRIGERATOR/FREEZER PORTABLE
- 282 SOLAR PANEL - 100 WATT
- 29W SOLAR PANEL/BATTERY CHRG W/O
- 265 CODES/STANDARDS-CSA/CMVSS
- 1B1 CODES/STANDARDS USA

1B1 265

COPYRIGHT 2016 WINNEBAGO INDUSTRIES, INC.

DSNR:		ALL DIMENSIONS ARE IN MILLIMETERS
DFFR:		
UNSPECIFIED TOLERANCES:		MATERIAL:
WHOLE DIM (X)	3	
ONE-PLACE (X.X)	1.5	
TWO-PLACE (X.XX)	0.50	
ANGLE	1°	
REFER TO ES0018 FOR FASTENER TIGHTENING GUIDELINES	WEIGHT: (LBS)	FIRST USED:
		16 P38P
DESCRIPTION: WIRING INSTL-BODY, 12V		
SHEET: 1 OF 11	ITEM/PART NO: 000209808 / 30211201000	REV:



VIEW BC

SSG
SSH

WIRE ASM-COACH
REMOVE KNOCKOUT
DETAIL BD

WIRE ASM-OVHD
192371-01-000

MULTIPLEX SWITCH
(SEE SHT 5)

PRLED-2
2

TO WIRE ASM-
SIDEWALL

SUBWOOFER-SUPPLIED
W/ SOUND BAR
BRACE
172938-01-CHT (2)
SCREW
G39-08-12U (8)

WIRES FROM SIDEWALL

TO WIRE ASM-
SIDEWALL

MULTIPLEX SWITCH
(SEE SHT 5)

PRLED-4
2

PRLED-2
2

WIRE ASM-OVHD
192370-01-000

MULTIPLEX SWITCH
(SEE SHT 5)

TO WIRE ASM-
SIDEWALL

TO WIRE ASM-
SIDEWALL

TO WIRE ASM-
SIDEWALL

4-PIN HSG
TO WATER HEATER
WIRE ASM-
WATER HEATER
188043-01-000

1BT

TO RIGHT SIDE

12V WIRES TO CONTROLS
IN 110V LOAD CENTER
DETAIL BC

MULTIPLEX DISTRIBUTION PANEL
(SEE SHT 5)

4-PIN HSG
TO WATER HEATER

THERMOSTAT-ZONE
171186-02-CHT

LIGHT-COURTESY
108354-01-CHT

DA

DETECTOR-LP GAS
150138-03-CHT

MULTIPLEX SWITCH
(SEE SHT 5)

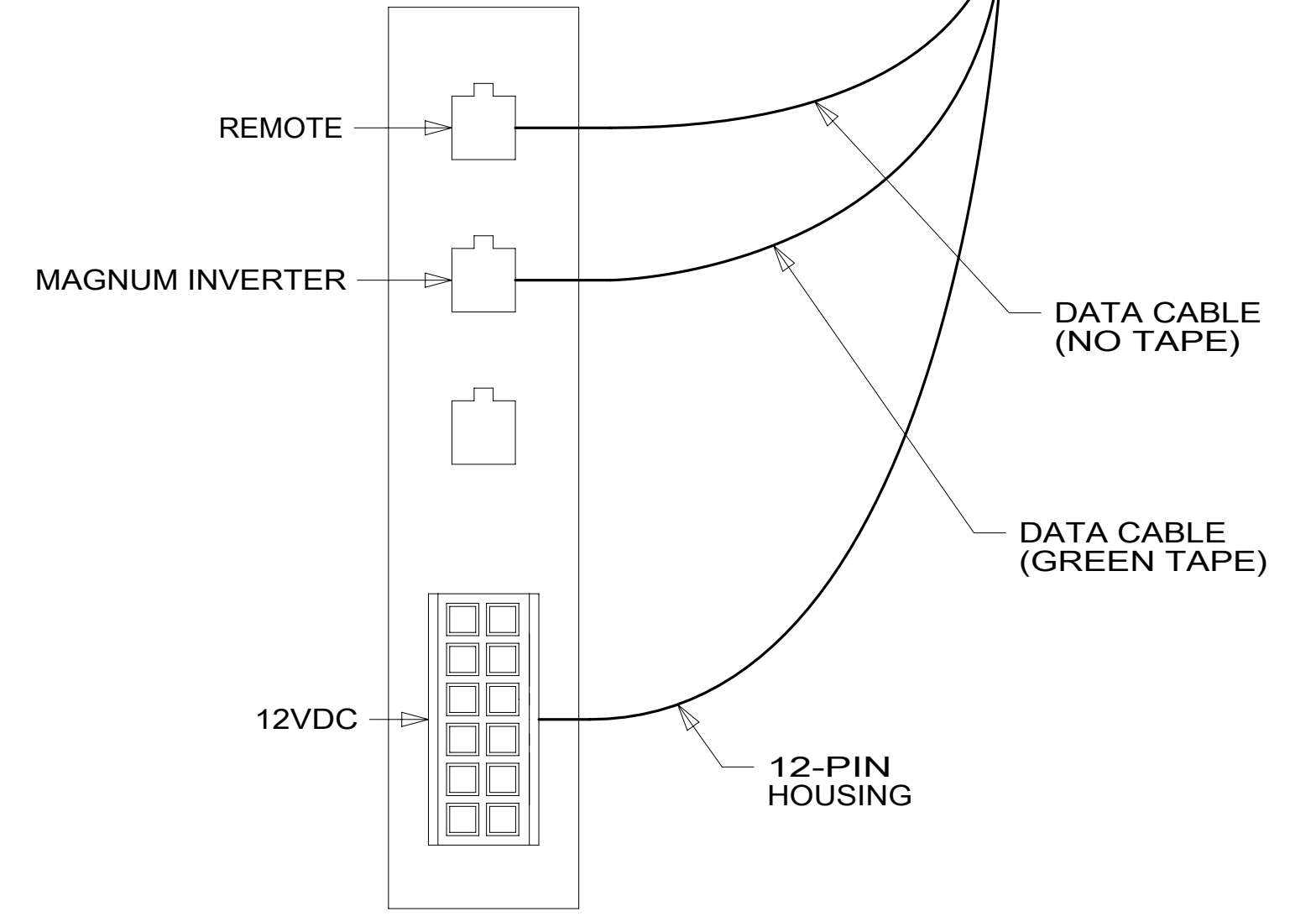
THERMOSTAT-ZONE
171186-02-CHT

THERMOSTAT-ZONE
171186-02-CHT

WIRE ASM-SLIDEOUT
192368-01-000

4-PIN HSG TO
FRONT FURNACE

WIRE ASM-
COACH



DETAIL BD

2 SEE LOAD CENTER/ATS ASM FOR ADDITIONAL INFORMATION.

1. AT MINIMUM ALL WIRES TO BE SUPPORTED AND SECURED PER CODE REQUIREMENTS. USE CLAMP 10495 OR 10497 OR WIRE TIE 8343 OR 108046 AND SCREW G67-XX-XXX OR G56-XX-XXX AS APPROPRIATE FOR INSTALLATION.

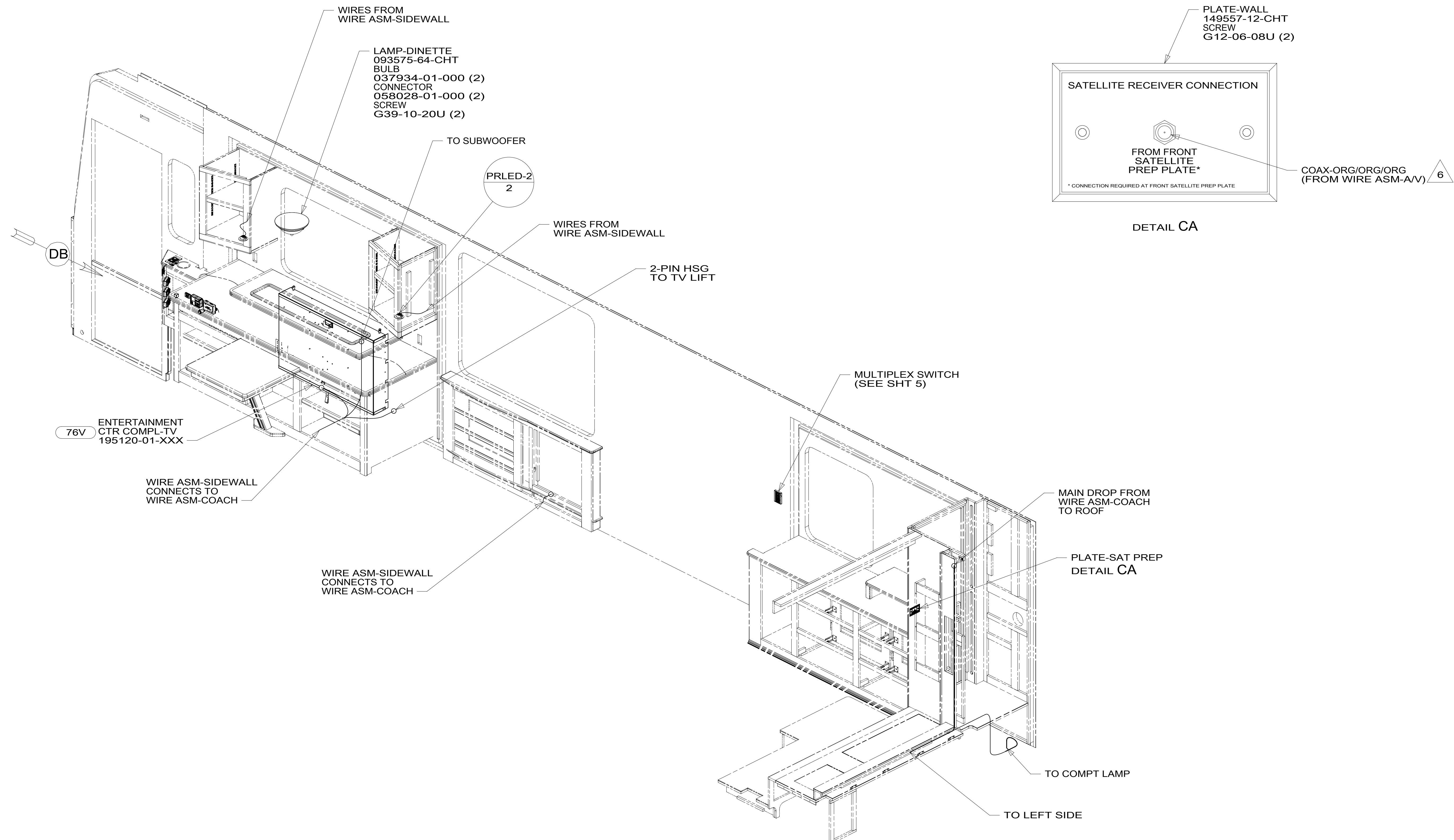
NOTES:

FOR ELECTRICAL
TORQUE
SPECIFICATIONS
SEE DWG NO.
128783-01-000

FOR
ELECTRICAL
CALLOUTS
SEE DWG NO.
121339-01-000

- 1BT WATER HEATER, TANKLESS
- 265 CODES/STANDARDS-CSA/CMVSS
- 1B1 CODES/STANDARDS USA

DESCRIPTION:		1B1 265	
WIRING INSTL-BODY, 12V			
SHEET:	ITEM/PART NO.:	REV	
2 OF 11	000209808 / 30211201000		



- 6 CABLE CONNECTS TO REAR OF PREP PLATE.
- 5 WIRES ROUTED THROUGH FLOOR.
- 4 SEE WIRING INSTL-TV/DVD FOR ADDITIONAL INFORMATION.
- 3 MOUNT SWITCH AND SPACER TO BLOCK ON JAMB, ADJUST HEIGHT TO MATCH MAGNET.
- 2 MOUNT MAGNET USING PILOT HOLES IN SCREEN DOOR FRAME. MOUNT WITH MAGNET TOWARD SWITCH.

1. AT MINIMUM ALL WIRES TO BE SUPPORTED AND SECURED PER CODE REQUIREMENTS. USE CLAMP 10495 OR 10497 OR WIRE TIE 8343 OR 108046 AND SCREW G67-XX-XXX OR G56-XX-XXX AS APPROPRIATE FOR INSTALLATION.

NOTES:

- 76V EXT ENT CTR W/TV & SOUNDBAR
- ITA ITASCA ONLY
- WIN WINNEBAGO ONLY
- 265 CODES/STANDARDS-CSA/CMVSS
- 1B1 CODES/STANDARDS USA

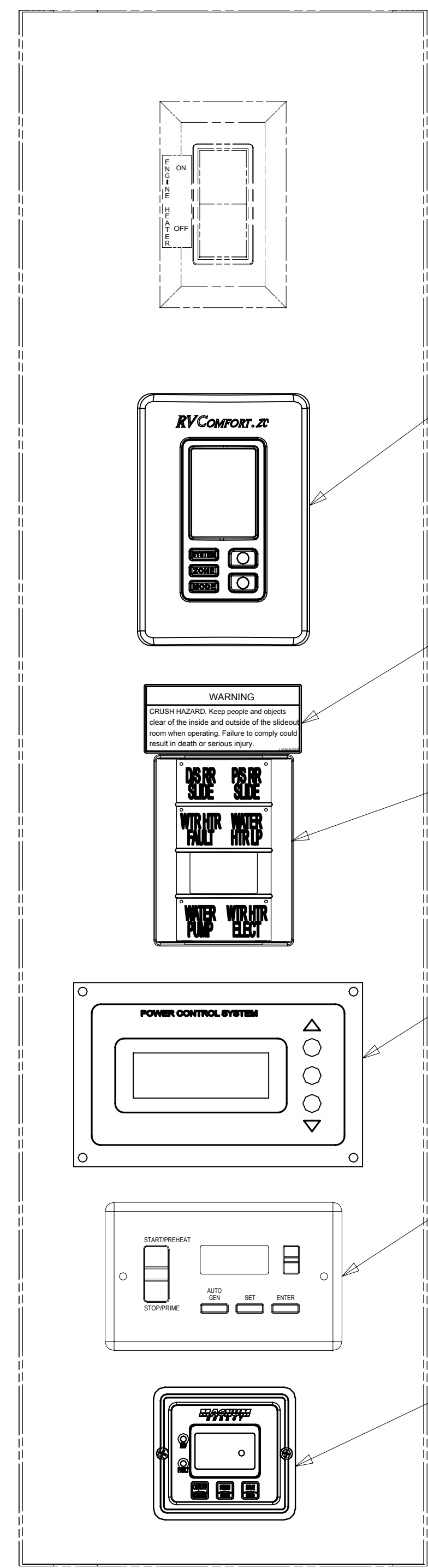
FOR ELECTRICAL TORQUE SPECIFICATIONS SEE DWG NO. 128783-01-000

FOR ELECTRICAL CALLOUTS SEE DWG NO. 121339-01-000

DESCRIPTION:	1B1 265	
WIRING INSTL-BODY, 12V		
SHEET:	ITEM/PART NO.:	REV:
3 OF 11	000209808 / 30211201000	

8 7 6 5 4 3 2 1

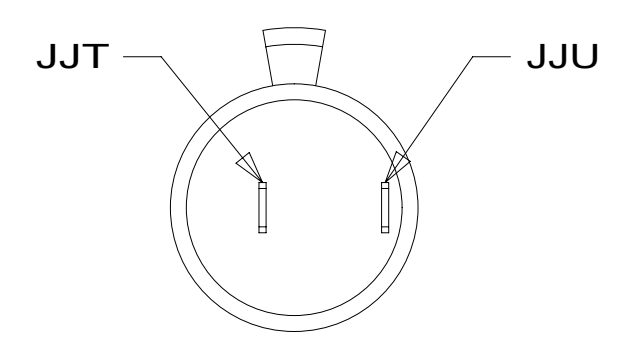
8 7 6 5 4 3 2 1 23-Nov-2016



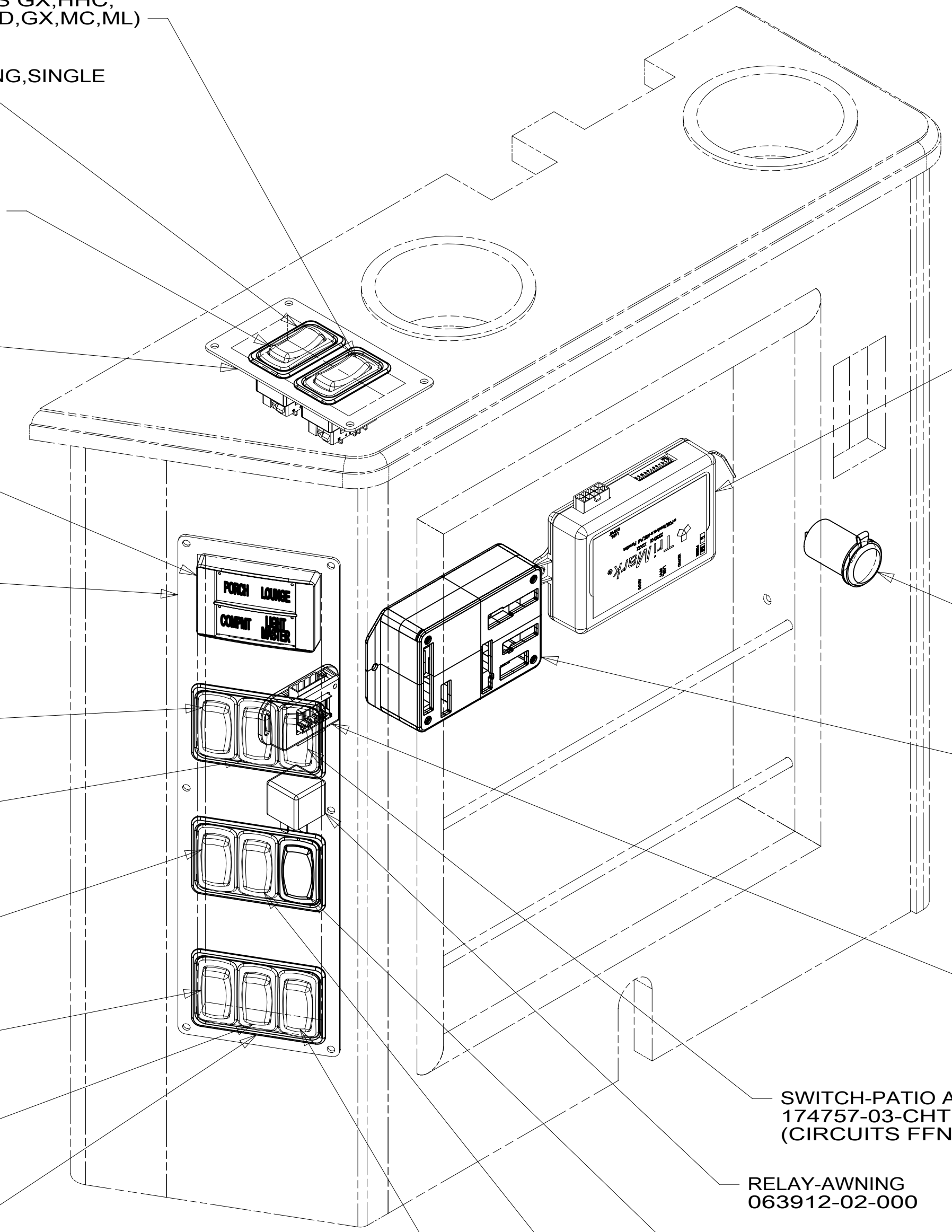
VIEW DA

- THERMOSTAT-ZONE,2-STAGE
171186-05-CHT
SCREW
G11-08-08U (2)
RELAY
63912-02-000 (2)
- LABEL-WARNING,SLIDEOUT
116549-02-000
- MULTIPLEX SWITCH
(SEE SHT 5)
- PANEL-MONITOR
174384-06-000
SCREW
G11-08-08U (4)
- MODULE-AUTO
GENERATOR START
158425-01-000
SCREW
G11-08-08U (2)
- REMOTE PANEL
175385-02-000
SCREW
G11-08-08U (2)

- NOTES:
- 3 SET 'GEN TYPE' TO 'QD 6-8'
SET 'SAFE TYPE' TO 'IGNITION'
SET 'SP SENSE' TO 'AFTER'
SEE OWNERS MANUAL FOR SETUP PROCEDURE.
 - 2 SET 'BAT TYPE' TO 'AGM2'
SET 'BAT AHRS' TO '600 AH'
SET 'LBCO' TO '11VDC'
SEE OWNERS MANUAL FOR SETUP PROCEDURE.
 - 1 SEE AWNING INSTL FOR ADDITIONAL INFORMATION.



DETAIL DC



VIEW DB

- SWITCH-STEP COVER
174757-08-CHT
(CIRCUITS GX,HHC,
KA,KA,HHD,GX,MC,ML)
- PANEL-SWITCH MOUNTING,SINGLE
174834-01-CHT (2)
- SWITCH-ENTRY DOOR LOCK
174757-02-CHT
(CIRCUITS PY,MK,PX,MC,ML)
- PLATE-SWITCH
176859-10-CHT
SCREW
G67-10-12U (4)
- MULTIPLEX SWITCH
(SEE SHT 5)
- PLATE-SWITCH
191990-01-CHT
SCREW
G67-10-12U (6)
- SWITCH-AWNING POWER
174757-19-CHT
(CIRCUITS FFD,FFT,MC,FFT,ML)
- SWITCH-DOOR AWNING
174757-09-CHT
(CIRCUITS FFS,FFF,FFE,
FFE,FFG,FFT,MC,ML)
- SWITCH-AWNING WIND SENSOR
174757-18-CHT
(CIRCUITS UUK,UUL,UUM,MC,ML)
- SWITCH-CHASS BATT DISC
174757-06-CHT
(CIRCUITS UUC,TTY,
UUB,TTZ,UUC,MK)
WIRE ASM-THERM
186796-01-000
- SWITCH-ENTRY STEP
174757-27-CHT
(CIRCUITS ES,ER,MC,ML)
- PANEL-SWITCH
MOUNTING,3-WAY
174834-02-CHT (3)
- SWITCH-PATIO AWNING
174757-03-CHT
(CIRCUITS FFN,FFP,FFR,MC,ML)
- RELAY-AWNING
063912-02-000
- SWITCH-BLANK
145754-01-CHT
- SWITCH-AWNING LIGHT
174757-38-CHT
(CIRCUITS ZZK,JF,MC,WC)
- SWITCH-COACH BATT DISC
174757-07-CHT
(CIRCUITS KF,LG,LJ,LH,KF,WC)
WIRE ASM-THERM
186796-01-000
- KEYLESS ENTRY MODULE
176367-04-000
SCREW
G11-08-08U (2)
- RECEPTACLE-12V
132958-01-000
DETAIL DC
- AWNING CONTROL BOX
SCREW
G39-08-12U (2)
- DROP TAP-TERMINATOR
(SEE SHT 5)

265 CODES/STANDARDS-CSA/CMVSS
1B1 CODES/STANDARDS USA

FOR ELECTRICAL TORQUE SPECIFICATIONS SEE DWG NO. 128783-01-000

FOR ELECTRICAL CALLOUTS SEE DWG NO. 121339-01-000

DESCRIPTION:	1B1 265	
WIRING INSTL-BODY, 12V		
SHEET:	ITEM/PART NO:	REV
4 of 11	000209808 / 30211201000	

1B2 191682-04-000
 1BT 191682-05-000

PANEL ASM-SWITCH, 4POS, BATH
 191682-06-000

PANEL ASM-SWITCH, 8POS, BED OH
 191682-07-000

PANEL ASM-SWITCH, 8POS, LOUNGE
 191682-02-000

PANEL ASM-SWITCH, 4POS, GALLEY
 191682-03-000

DROP TAP-TERMINATOR, G4
 187976-06-000

PANEL ASM-SWITCH, 4POS, BAY
 191682-09-000

PANEL-DIST, DC, CONTROL MULTPL
 191687-01-000

PANEL ASM-SWITCH, 4POS, ENTRY
 191682-01-000

DROP TAP-TERMINATOR, G3 W/CON
 187976-04-000

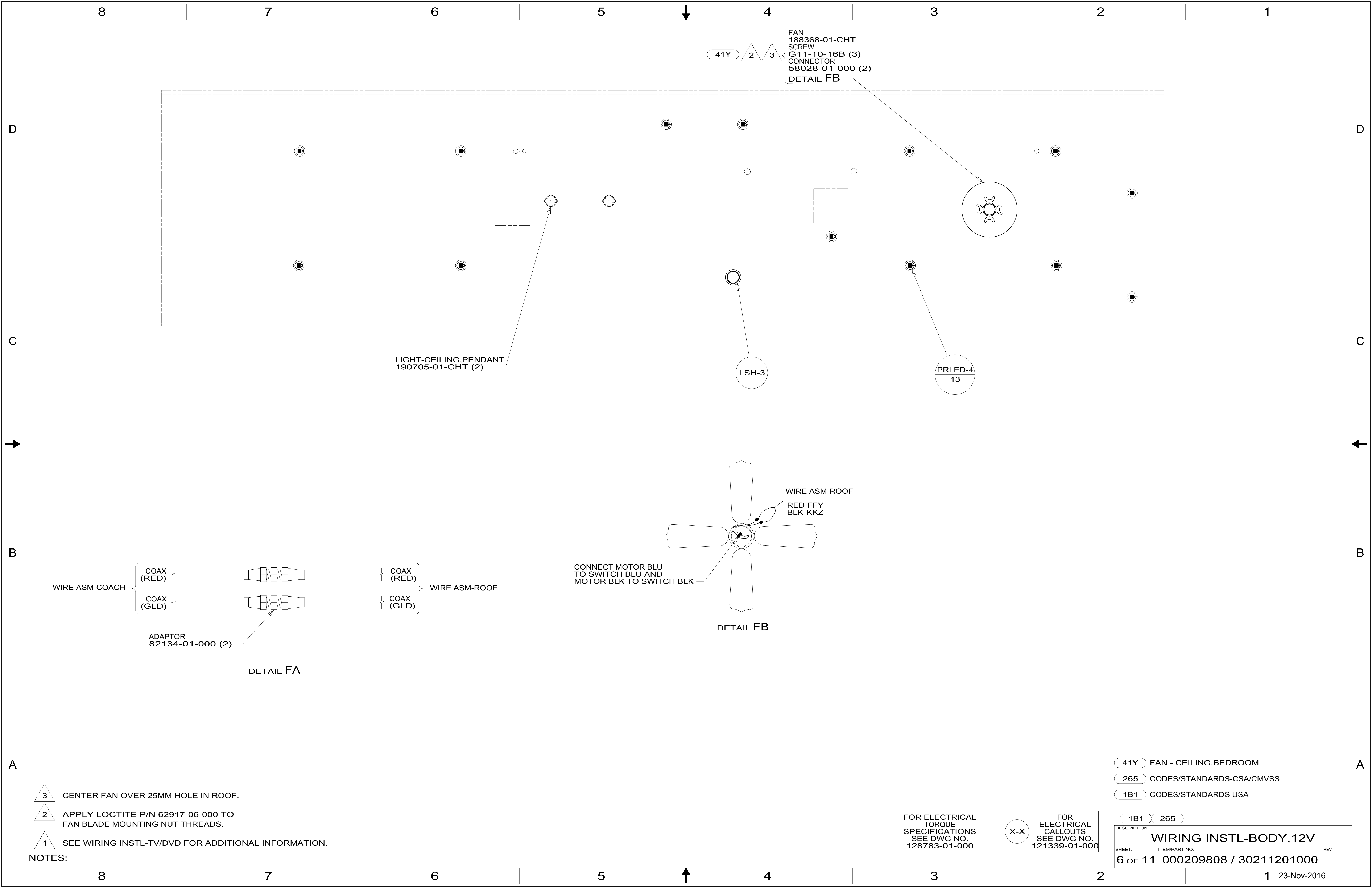
PANEL ASM-SWITCH, 8POS, BEDRM
 191682-08-000

- 1B2 WTR HTR-10GAL/ELEC/LP/MTRAIID
- 1BT WATER HEATER, TANKLESS
- 265 CODES/STANDARDS-CSA/CMVSS
- 1B1 CODES/STANDARDS USA

FOR ELECTRICAL TORQUE SPECIFICATIONS SEE DWG NO. 128783-01-000

FOR ELECTRICAL CALLOUTS SEE DWG NO. 121339-01-000

DESCRIPTION:	1B1 265	
WIRING INSTL-BODY, 12V		
SHEET:	ITEM/PART NO:	REV
5 of 11	000209808 / 30211201000	

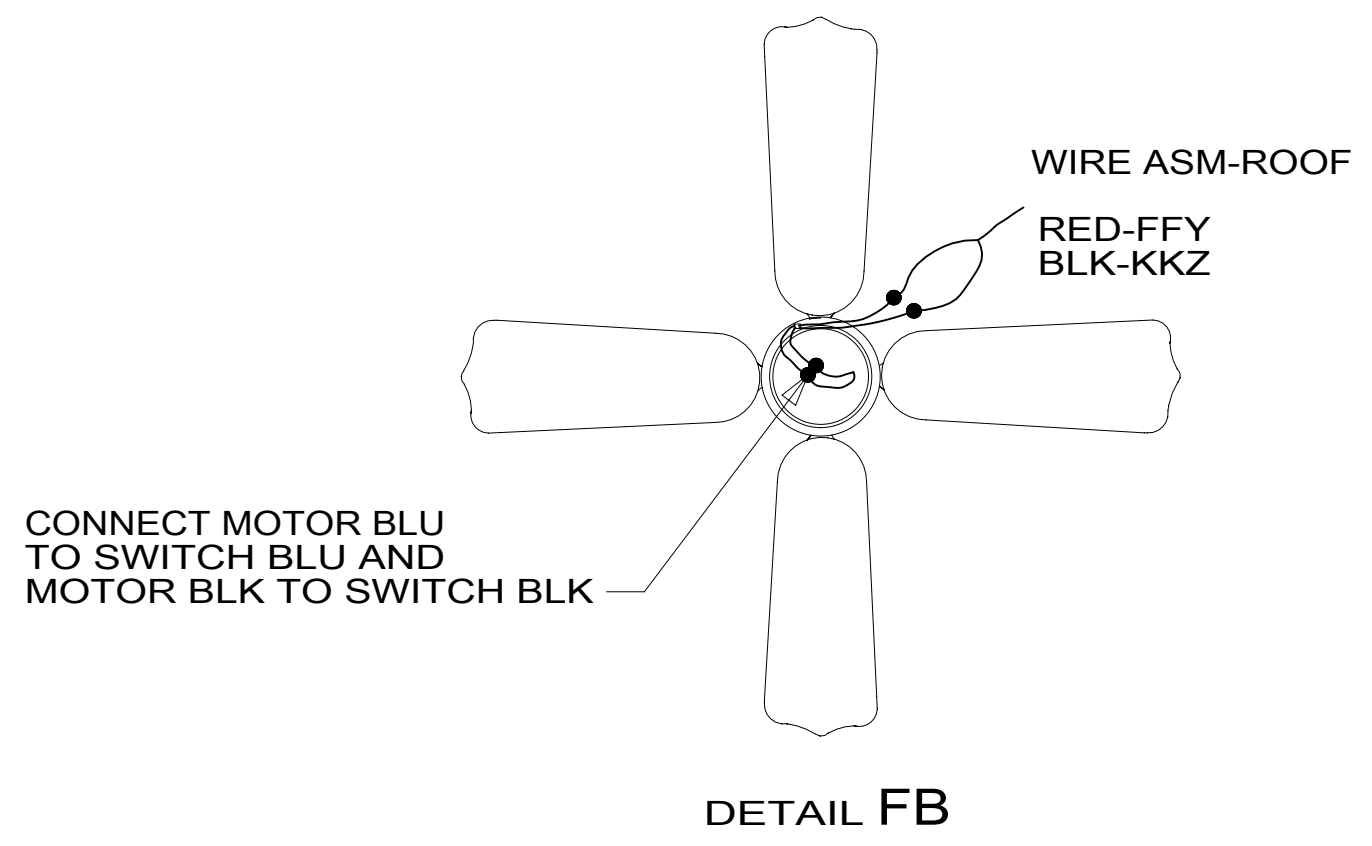
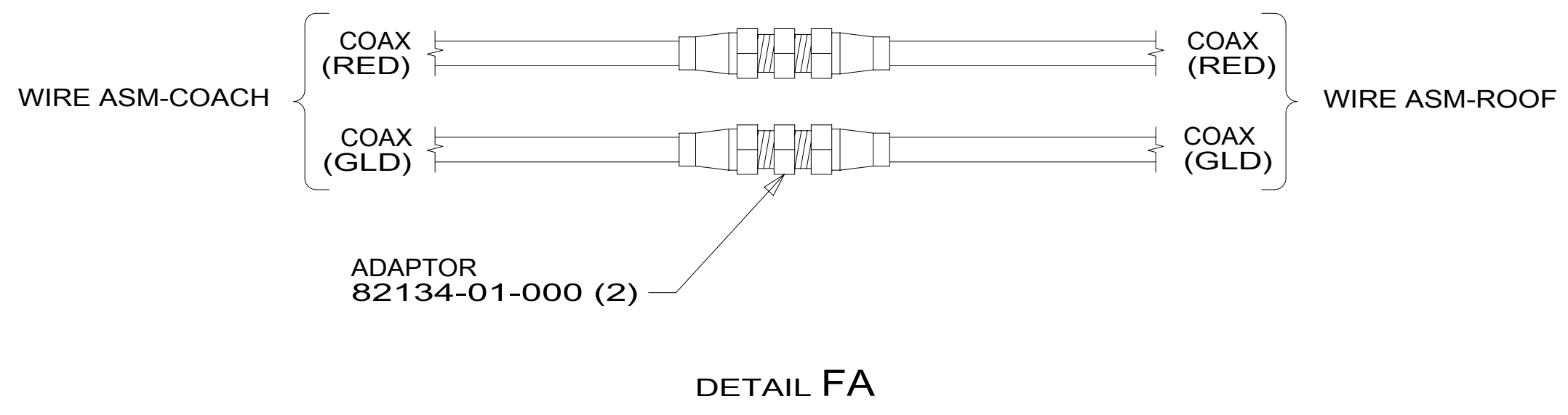


- FAN 188368-01-CHT
- SCREW G11-10-16B (3)
- CONNECTOR 58028-01-000 (2)
- DETAIL FB

LIGHT-CEILING, PENDANT
190705-01-CHT (2)

LSH-3

PRLED-4
13



- NOTES:
- 3 CENTER FAN OVER 25MM HOLE IN ROOF.
 - 2 APPLY LOCTITE P/N 62917-06-000 TO FAN BLADE MOUNTING NUT THREADS.
 - 1 SEE WIRING INSTL-TV/DVD FOR ADDITIONAL INFORMATION.

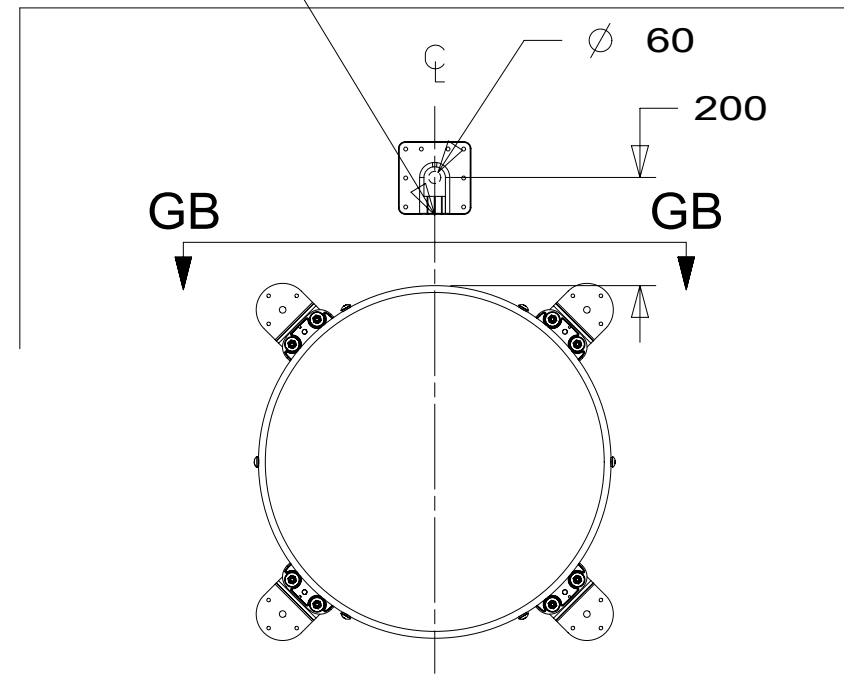
- 41Y FAN - CEILING,BEDROOM
- 265 CODES/STANDARDS-CSA/CMVSS
- 1B1 CODES/STANDARDS USA

FOR ELECTRICAL TORQUE SPECIFICATIONS SEE DWG NO. 128783-01-000

FOR ELECTRICAL CALLOUTS SEE DWG NO. 121339-01-000

DESCRIPTION:	
WIRING INSTL-BODY, 12V	
SHEET: 6 OF 11	ITEM/PART NO: 000209808 / 30211201000
REV	

THE SATELLITE DISH WIRE CONNECTIONS ARE TO BE PLACED ON THE CENTERLINE OF THE MOTORHOME FACING FORWARD

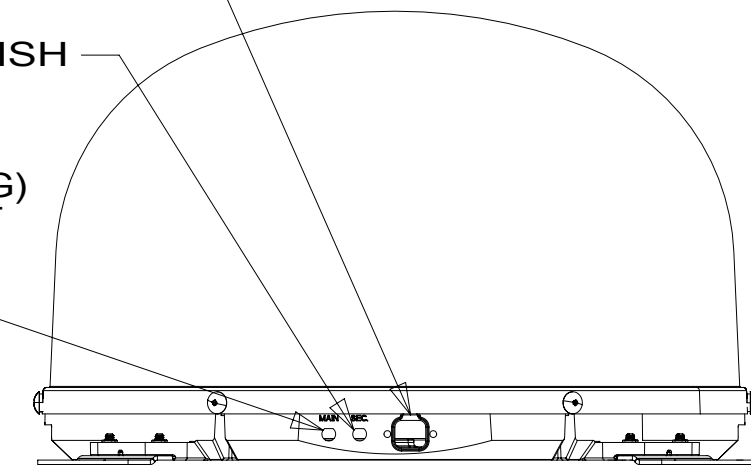


DETAIL GA 2

CONNECT 2-PIN HOUSING FROM ROOF ASM TO SATELLITE DISH HERE AND ADD CONVOLUTED TUBING

CONNECT CABLE ASM COAX (ORG-2) FROM ROOF ASM TO SEC INPUT ON SATELLITE DISH

CONNECT CABLE ASM COAX (ORG) FROM ROOF ASM TO MAIN INPUT ON SATELLITE DISH

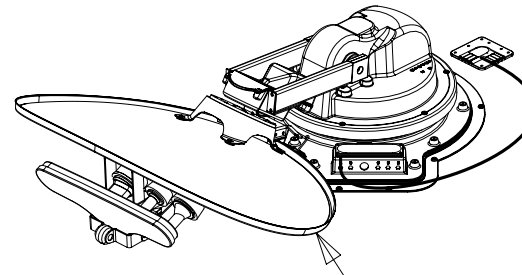


VIEW GB-GB

GD

WIRING
DETAIL GE

WIRING
DETAIL GE



- DA-4 783 1
DETAIL GC
- DI-3 48P 1
DETAIL GA

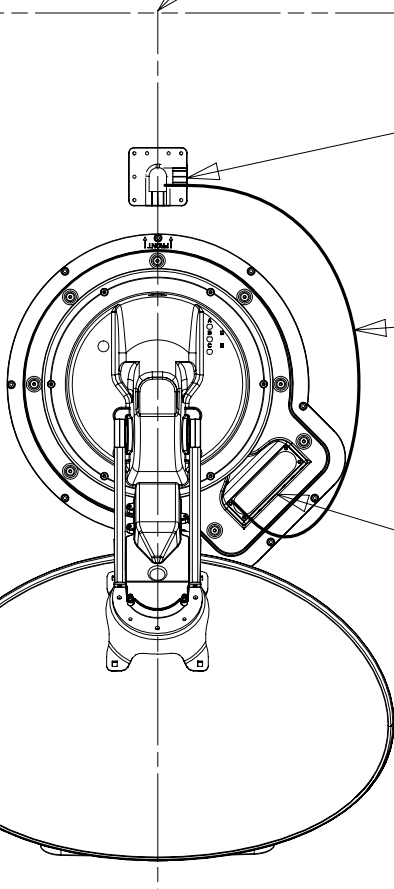
ANT-5 193 1

THE SATELLITE DISH AND WIRE CONNECTIONS ARE TO BE PLACED ON THE CENTERLINE OF THE MOTORHOME FACING FORWARD.

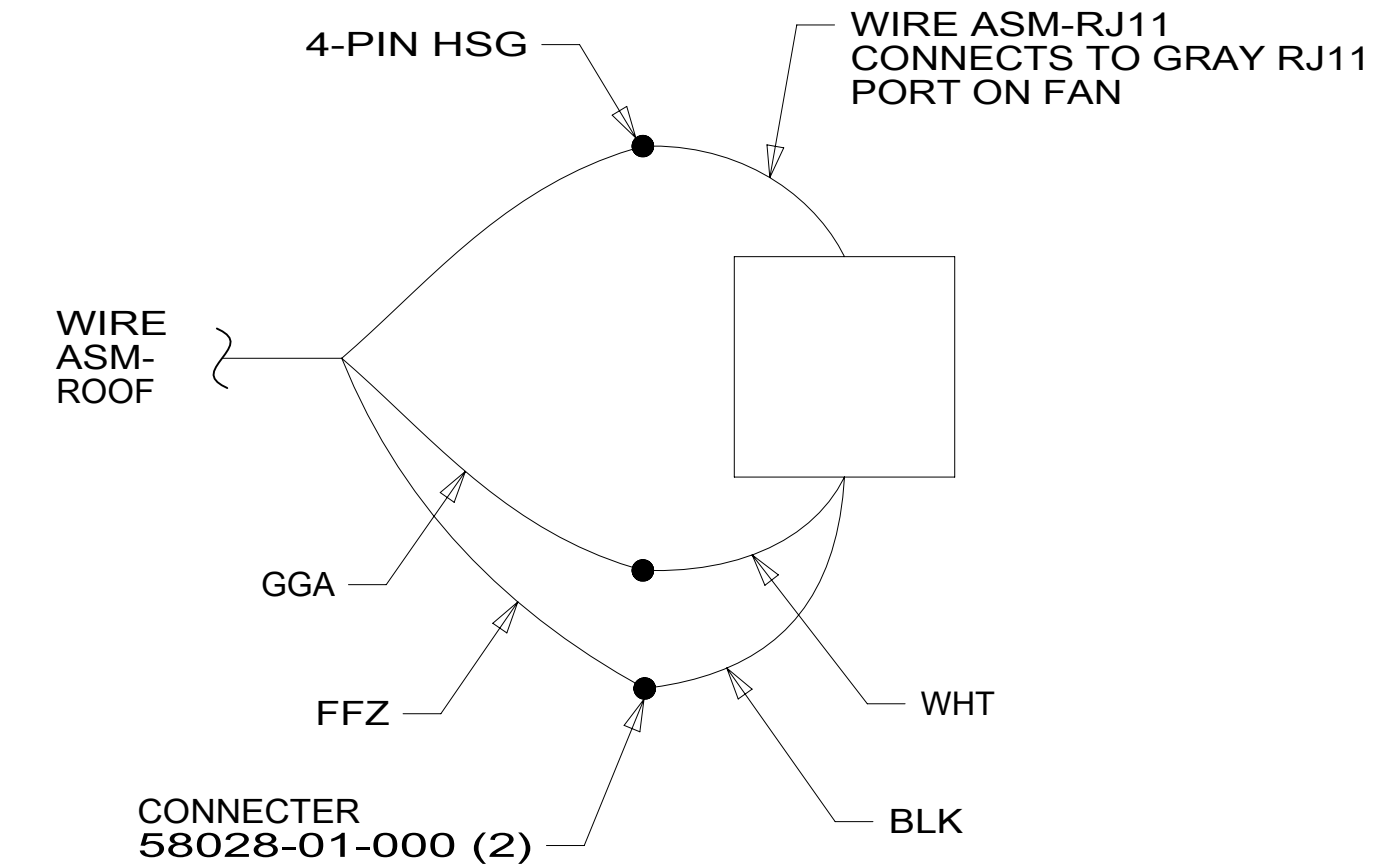
SEPARATE CABLES AND INSTALL WIRE COVER OVER HOLE IN ROOF ASM WITH CABLES EXITING ON PASSENGERS SIDE.

WHEN APPLYING ROOF SEALANT TO SATELLITE DISH, PLACE ROOF SEALANT HERE (APPROXIMATELY 75MM WIDE) AND PUSH THE CABLES INTO THE SEALANT TO STABILIZE THEM.

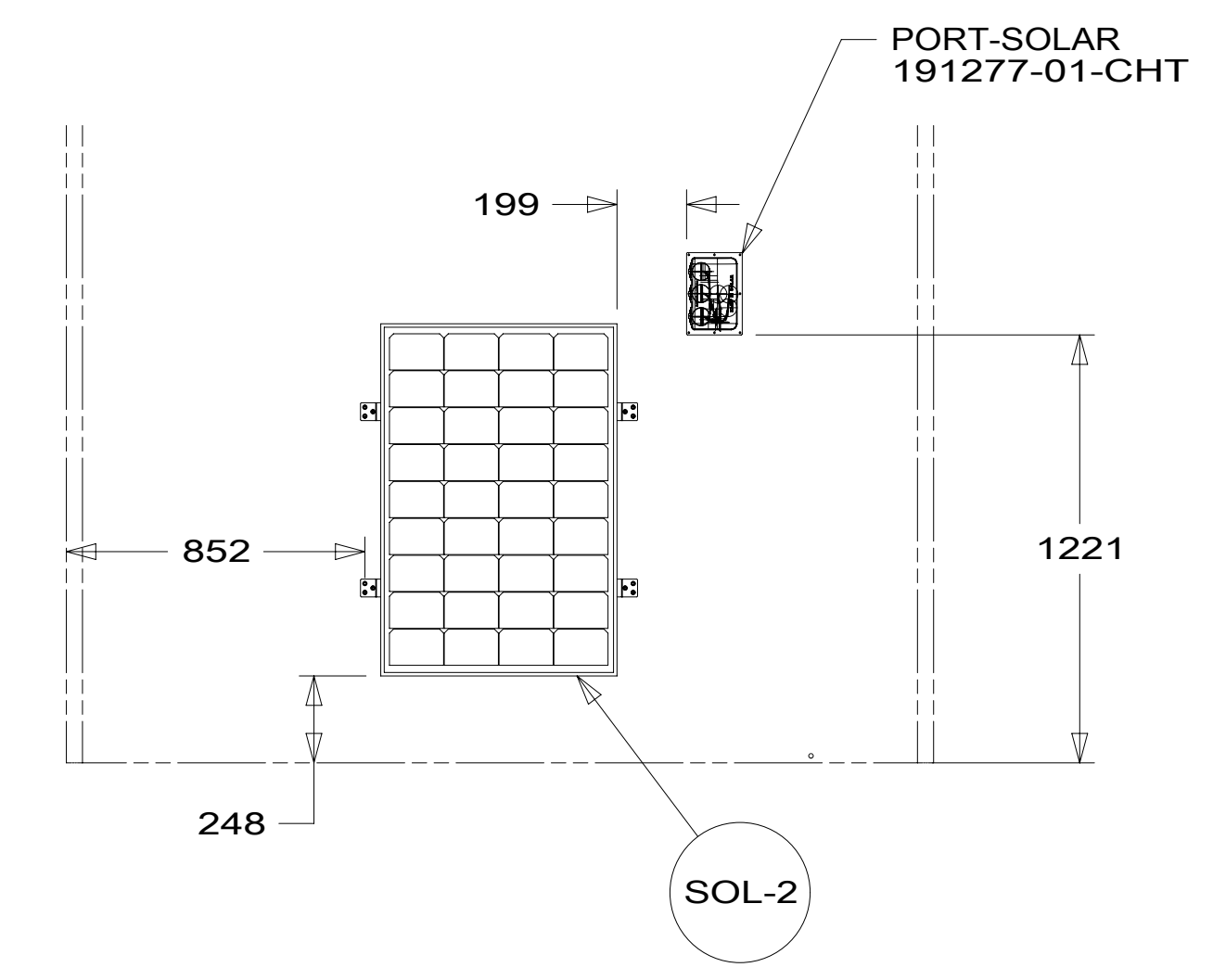
CONNECT CABLE ASM-COAX FROM ROOF ASM TO COAX CABLES ON SATELLITE DISH AND CONNECT 10' CABLE-DATA FROM ROOF ASM TO DATA CABLE FROM SATELLITE DISH AND PLACE ALL CONNECTIONS BACK INTO ROOF ASM.



DETAIL GC



DETAIL GE



DETAIL GD 282

- NOTES:
- 2 REMOVE ALL SHIPPING RESTRAINTS AND FIRMLY INSERT THE SUPPLIED PLUGS INTO THE APPROPRIATE SIZED HOLES AS SPECIFIED IN THE INSTALLATION PROCESS.
 - 1 SEE MANUFACTURER'S INSTALLATION FOR ADDITIONAL INFORMATION.

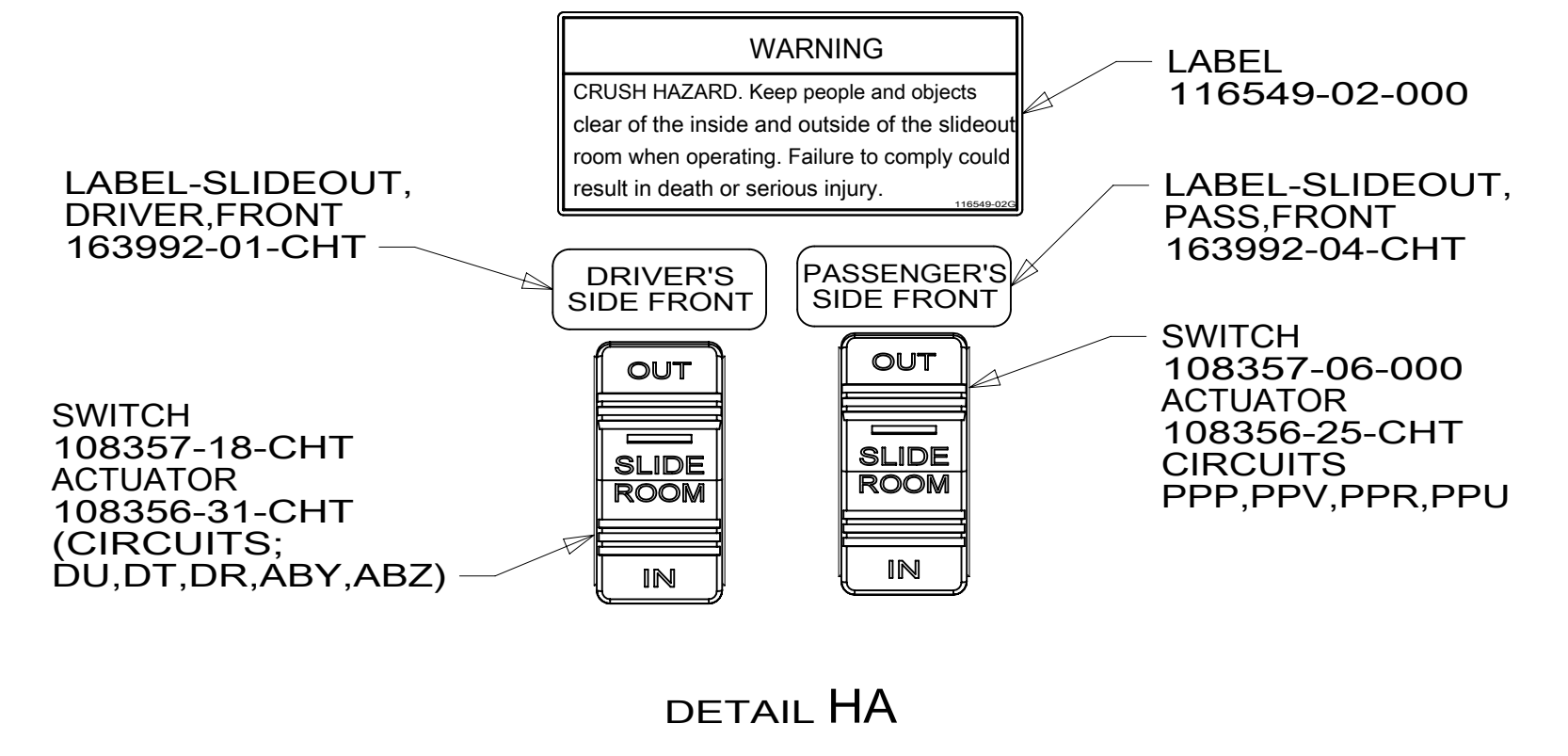
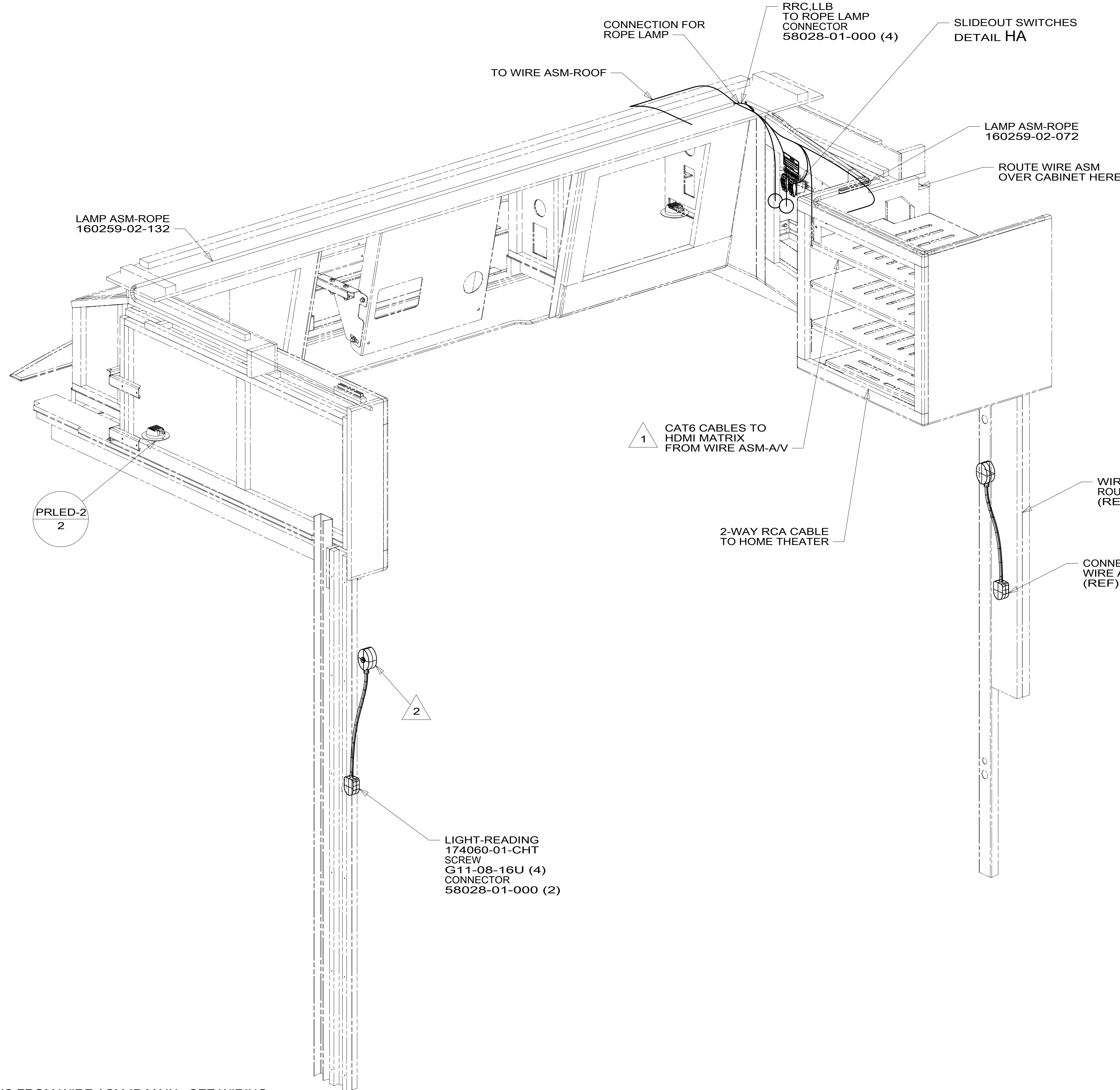
FOR ELECTRICAL TORQUE SPECIFICATIONS SEE DWG NO. 128783-01-000

FOR ELECTRICAL CALLOUTS SEE DWG NO. 121339-01-000

- 282 SOLAR PANEL - 100 WATT
- 783 SATELLITE HD TV SYSTEM AUTOC
- 193 TV ANTENNA-AMPLIFIED SYSTEM
- 48P SAT TV SYSTEM IN-MOTION
- 29Q SOLAR PANEL - 10 WATT
- 25D STEREO SYSTEM/W/CD/DVD REAR
- 1D3 ENTERTAIN CENTR/EXT TV-DVD
- 265 CODES/STANDARDS-CSA/CMVSS
- 1B1 CODES/STANDARDS USA

DESCRIPTION:	1B1 265	
WIRING INSTL-BODY, 12V		
SHEET:	ITEM/PART NO:	REV
7 of 11	000209808 / 30211201000	

8 7 6 5 4 3 2 1



1

1

1

2

2

1

WIRE IS FROM WIRE ASM-IP,MAIN. SEE WIRING INSTL-FRONT END FOR ADDITIONAL INFORMATION.

SEE WIRING INSTL-CHASSIS FOR ADDITIONAL INFORMATION.

NOTES:

FOR ELECTRICAL TORQUE SPECIFICATIONS SEE DWG NO. 128783-01-000

FOR ELECTRICAL CALLOUTS SEE DWG NO. 121339-01-000

- 61E TV(FRONT)-26" COLOR STEREO
- 32V GENERATOR-START,AUTO SYS W/O
- 32W GENERATOR-START,AUTO SYSTEM
- 265 CODES/STANDARDS-CSA/CMVSS
- 1B1 CODES/STANDARDS USA

1B1 265

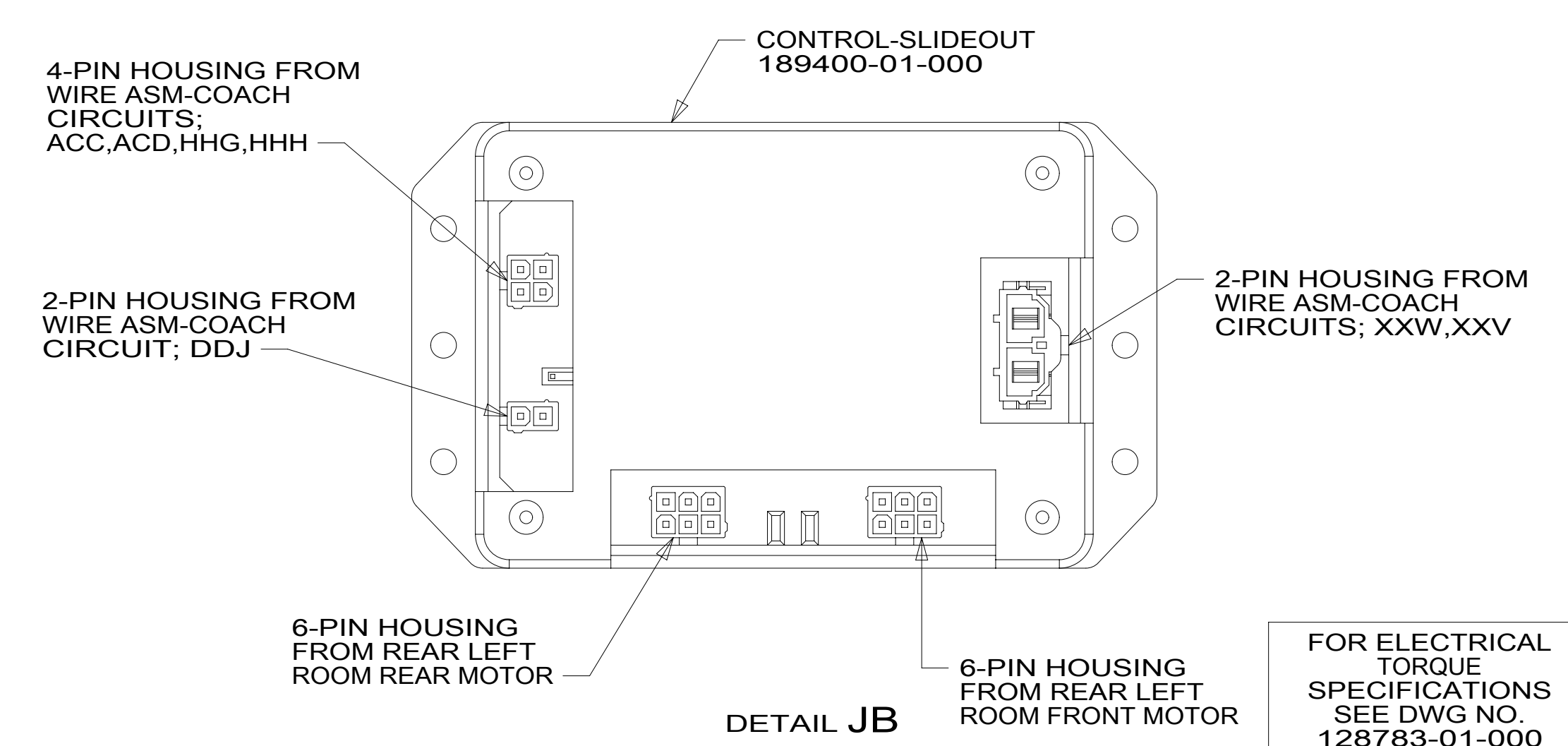
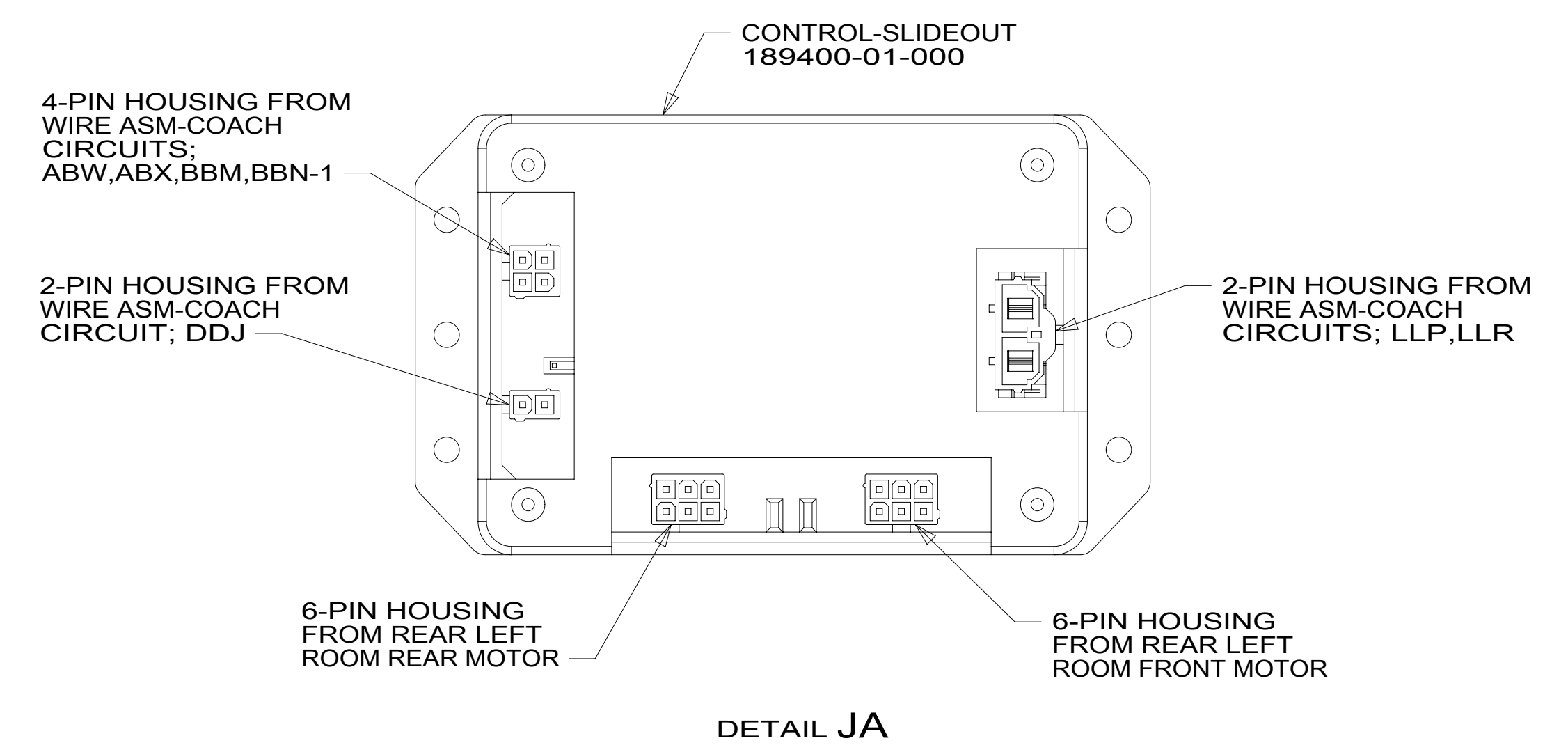
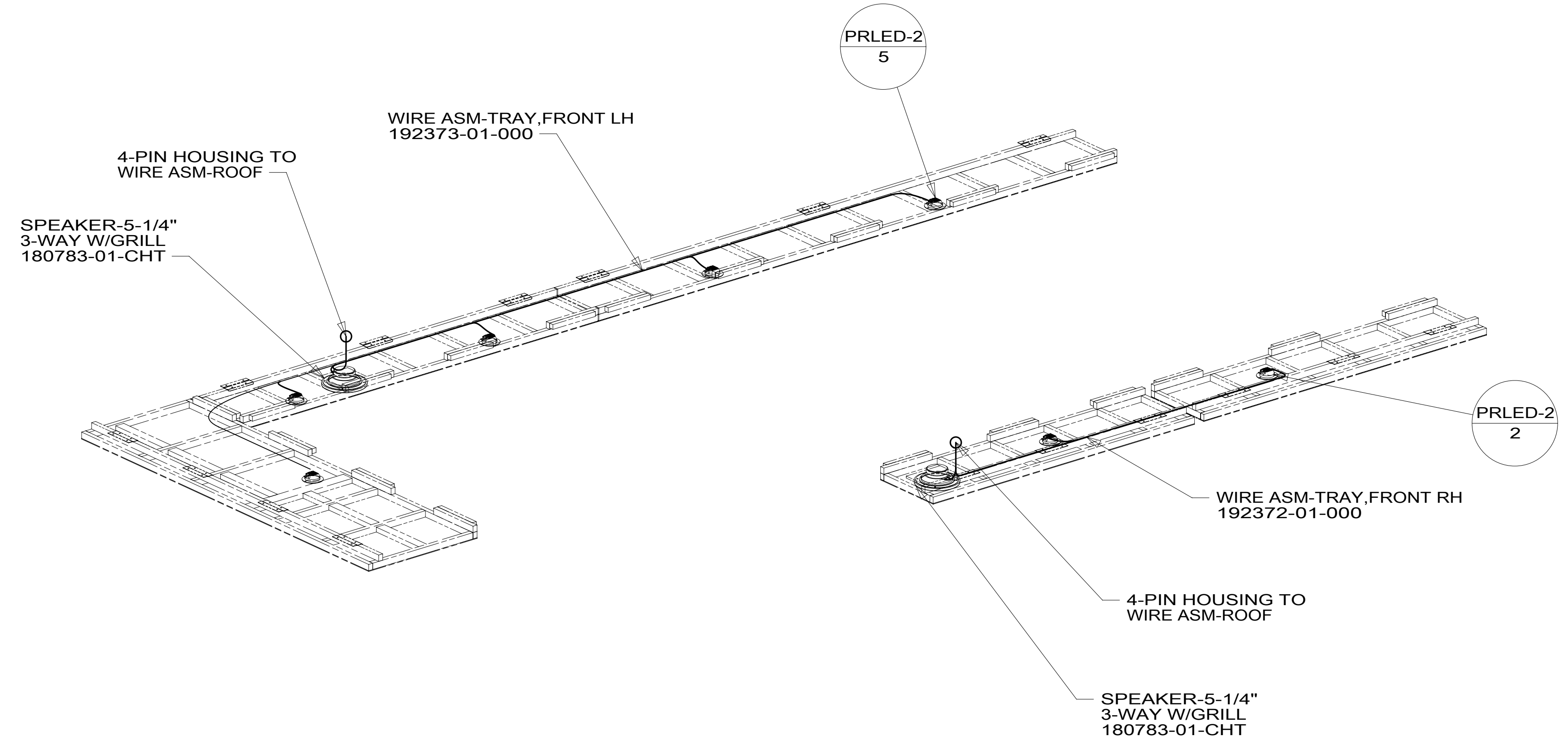
DESCRIPTION: WIRING INSTL-BODY, 12V

SHEET: 8 OF 11 ITEM/PART NO: 000209808 / 30211201000 REV

8 7 6 5 4 3 2 1 23-Nov-2016

8 7 6 5 4 3 2 1

D
C
B
A



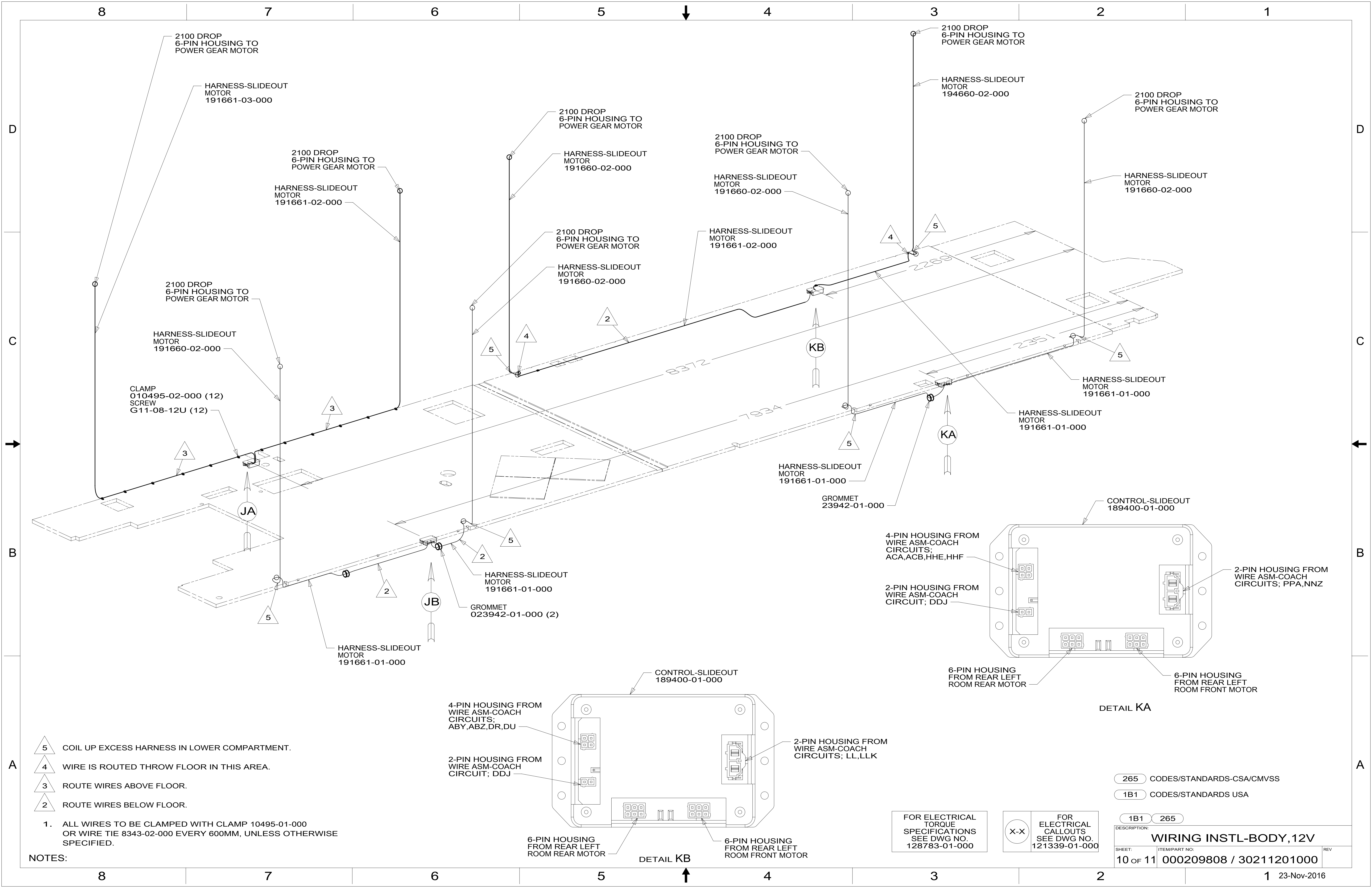
FOR ELECTRICAL TORQUE SPECIFICATIONS SEE DWG NO. 128783-01-000

FOR ELECTRICAL CALLOUTS SEE DWG NO. 121339-01-000

- 265 CODES/STANDARDS-CSA/CMVSS
- 1B1 CODES/STANDARDS USA

DESCRIPTION:		1B1	265
WIRING INSTL-BODY, 12V			
SHEET:	ITEM/PART NO.:	REV	
9 OF 11	000209808 / 30211201000		

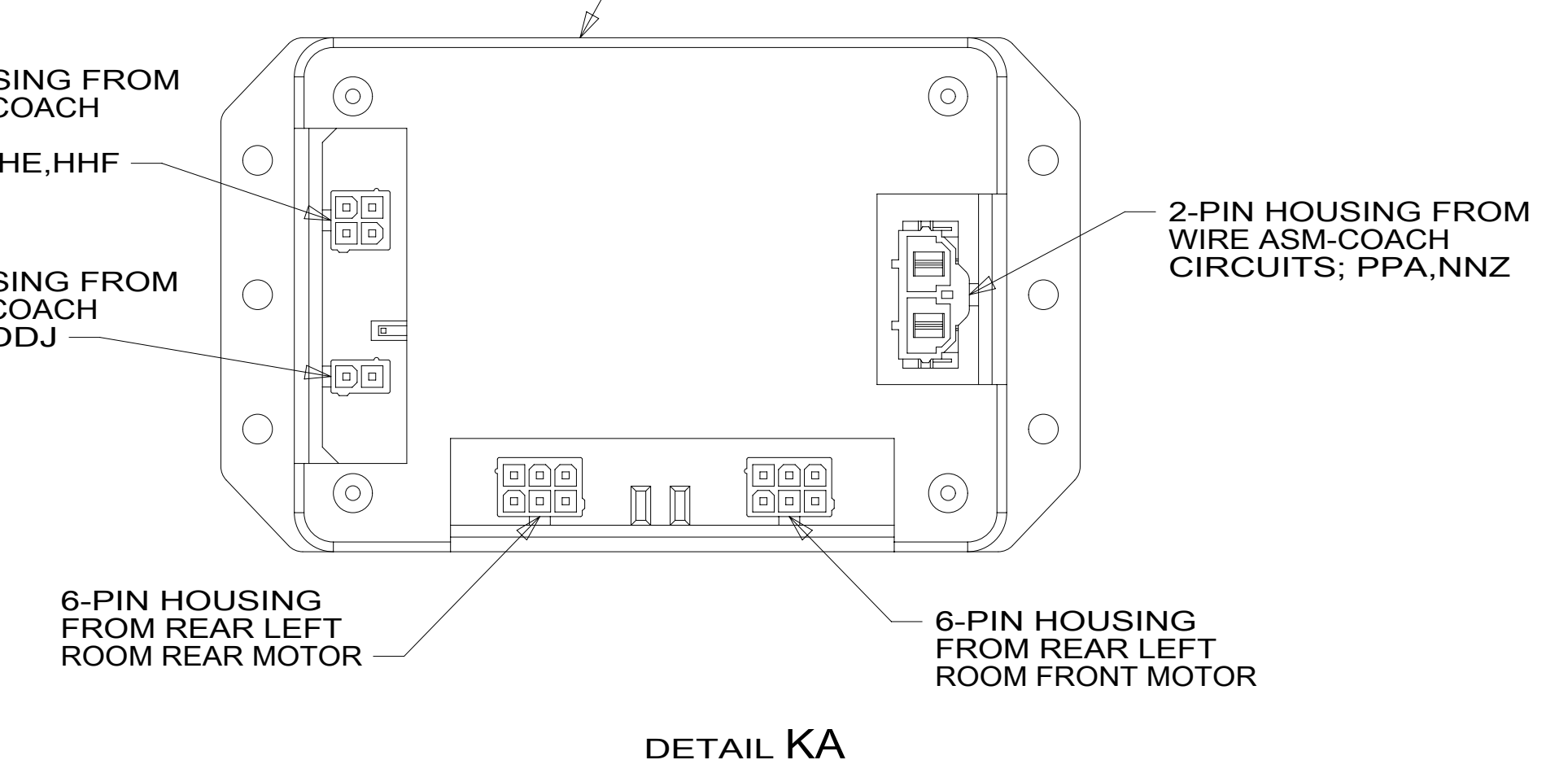
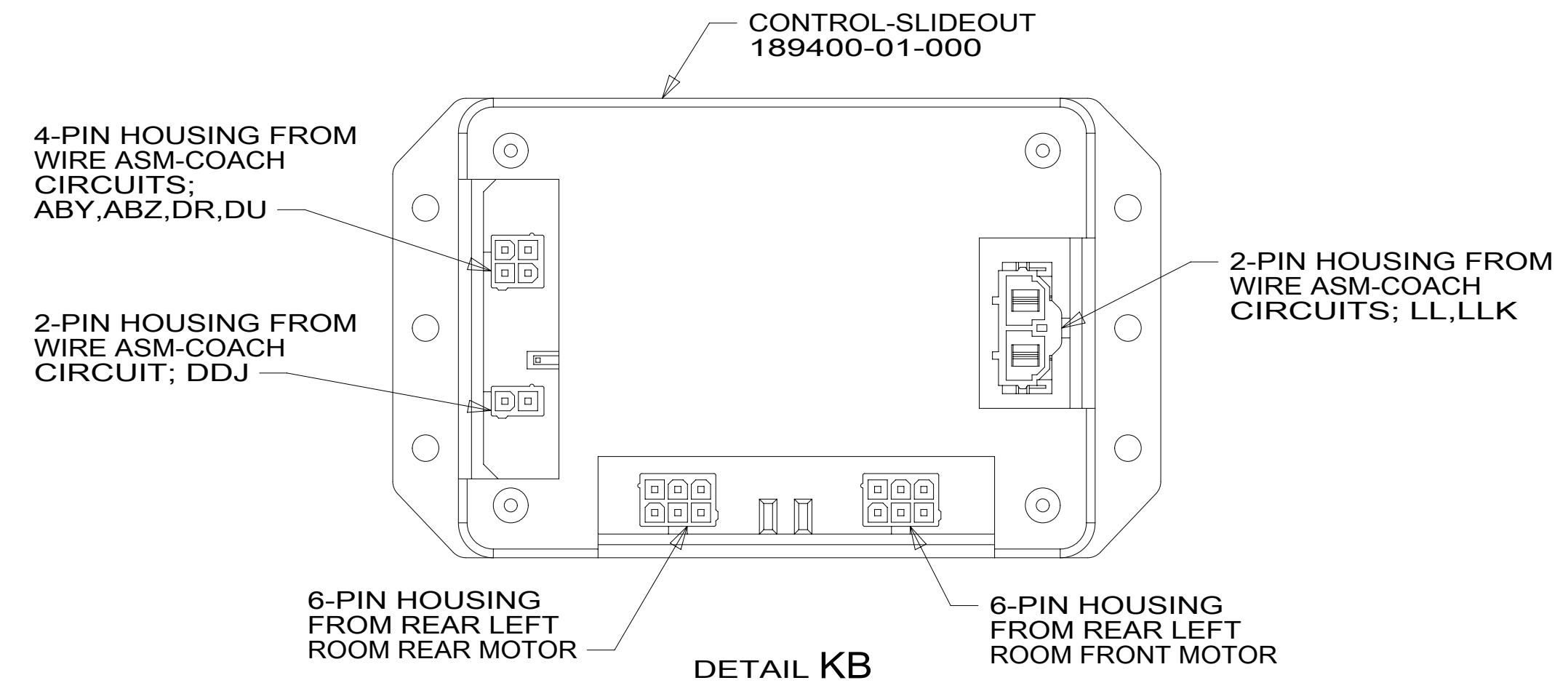
8 7 6 5 4 3 2 1 23-Nov-2016



- 5 COIL UP EXCESS HARNESS IN LOWER COMPARTMENT.
- 4 WIRE IS ROUTED THROU FLOOR IN THIS AREA.
- 3 ROUTE WIRES ABOVE FLOOR.
- 2 ROUTE WIRES BELOW FLOOR.

1. ALL WIRES TO BE CLAMPED WITH CLAMP 10495-01-000 OR WIRE TIE 8343-02-000 EVERY 600MM, UNLESS OTHERWISE SPECIFIED.

NOTES:



FOR ELECTRICAL TORQUE SPECIFICATIONS SEE DWG NO. 128783-01-000

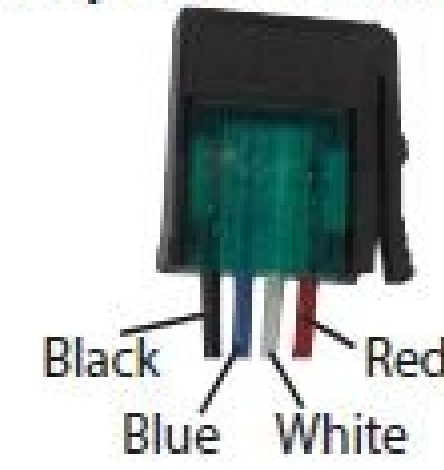
FOR ELECTRICAL CALLOUTS SEE DWG NO. 121339-01-000

- 265 CODES/STANDARDS-CSA/CMVSS
- 1B1 CODES/STANDARDS USA

DESCRIPTION:		1B1 265	
WIRING INSTL-BODY, 12V			
SHEET:	ITEM/PART NO.:	REV:	
10 OF 11	000209808 / 30211201000		

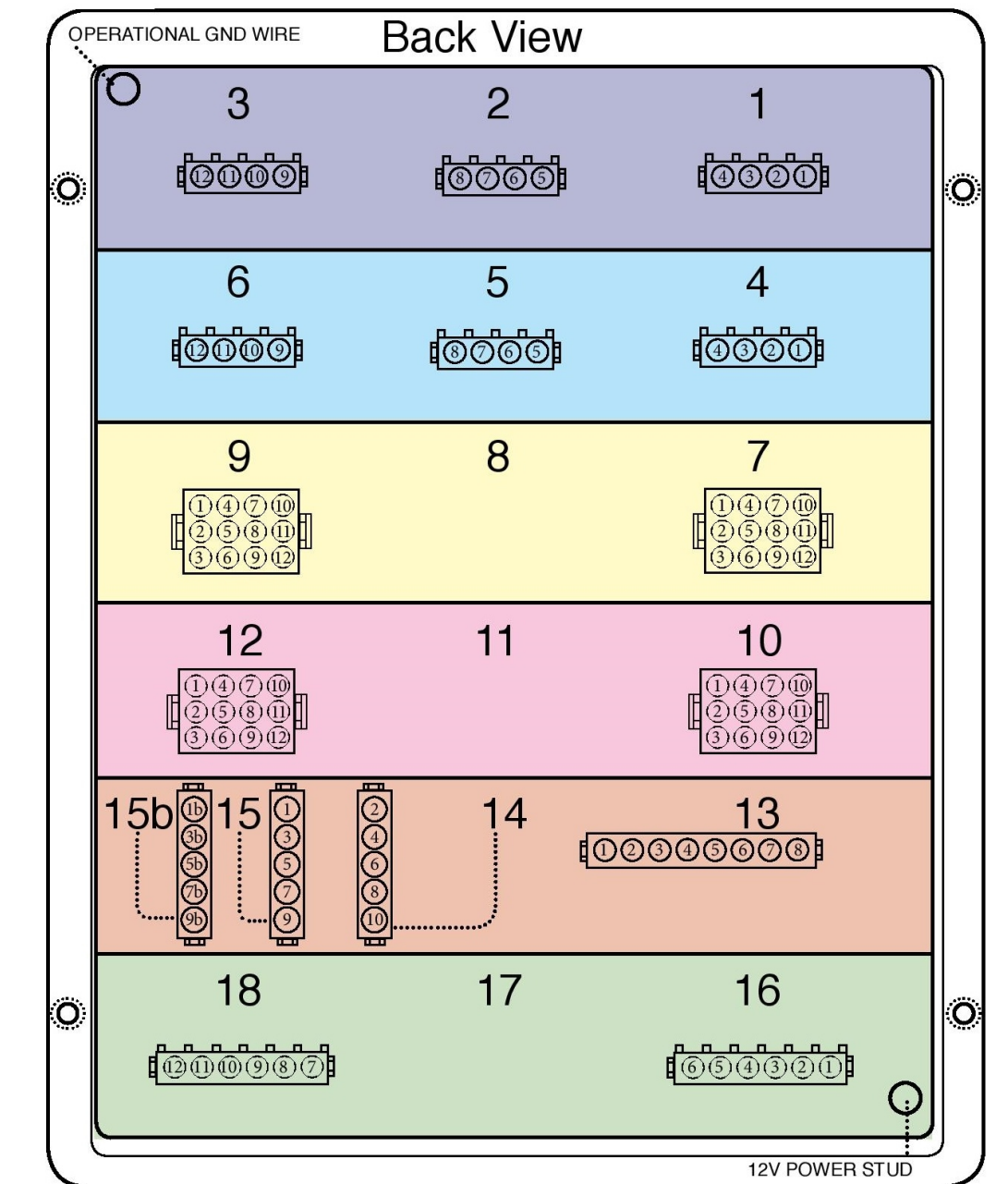
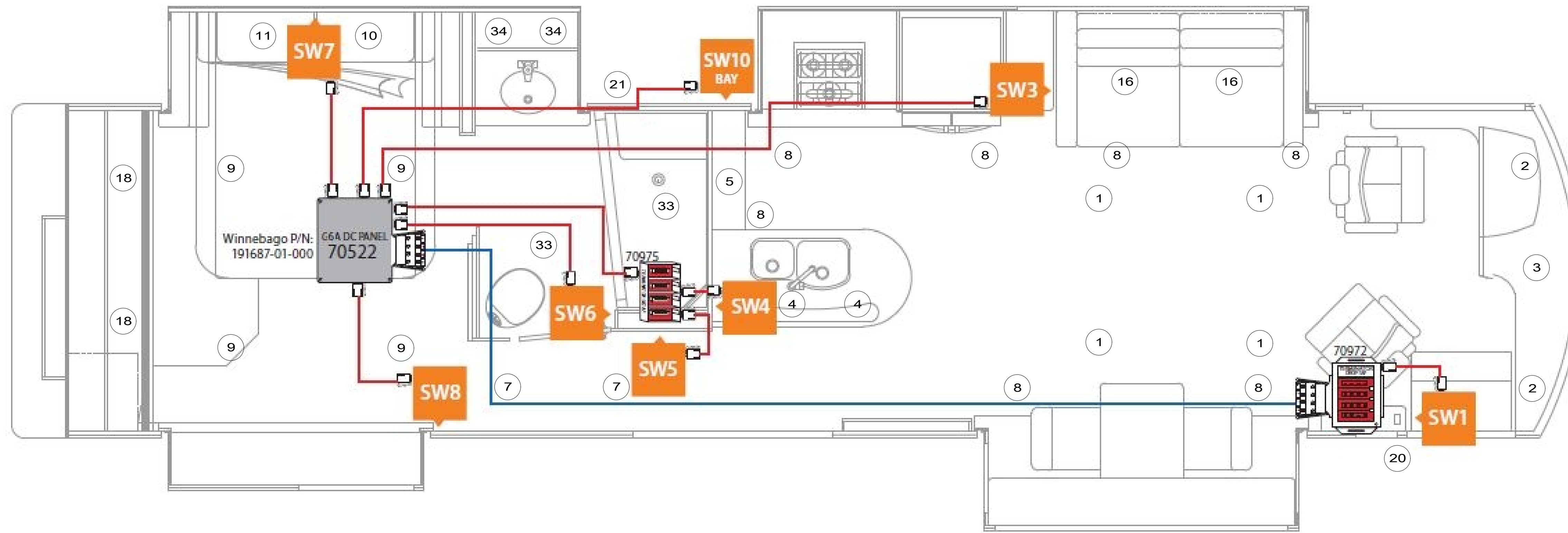
WINNEBAGO - P38P
 SSP -15 NETWORK WIRING DIAGRAM
 SWITCH PANEL LAYOUT
 REVISION 1v7 2/27/15

Drop Cable Connections

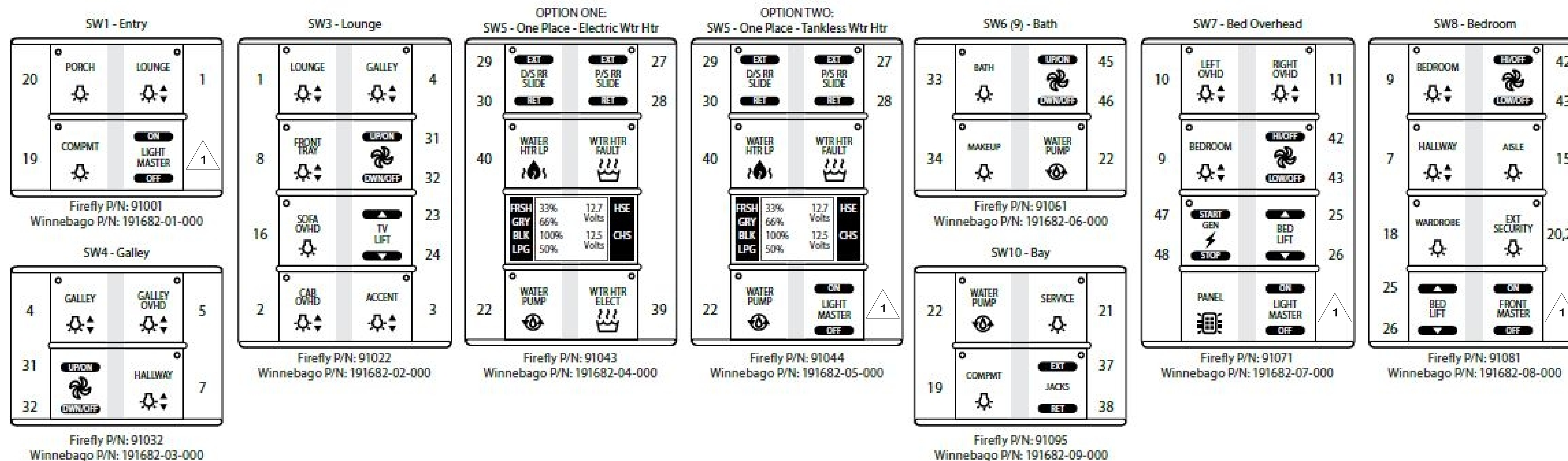


NETWORK LEGEND

- TRUNK CABLE
- DROP CABLE
- SWITCH POSITION



NOTE: CONNECTORS ARE SHOWN HERE IN THE LOADED (REAR) VIEW.



THIS SHEET FOR REFERENCE ONLY

NOTES:
 1 LIGHT MASTER: ON: 1-17; OFF: 1-18,33,34,32,46
 FRONT MASTER (LIGHT): ON: 1-8,13,14,16,17; OFF: 1-8,13,14,16,17

DESCRIPTION: WIRING INSTL-BODY, 12V		
SHEET: 11 OF 11	ITEM/PART NO: 000209808 / 30211201000	REV
23-Nov-2016		