

8 7 6 5 4 3 2 1

D

D

C

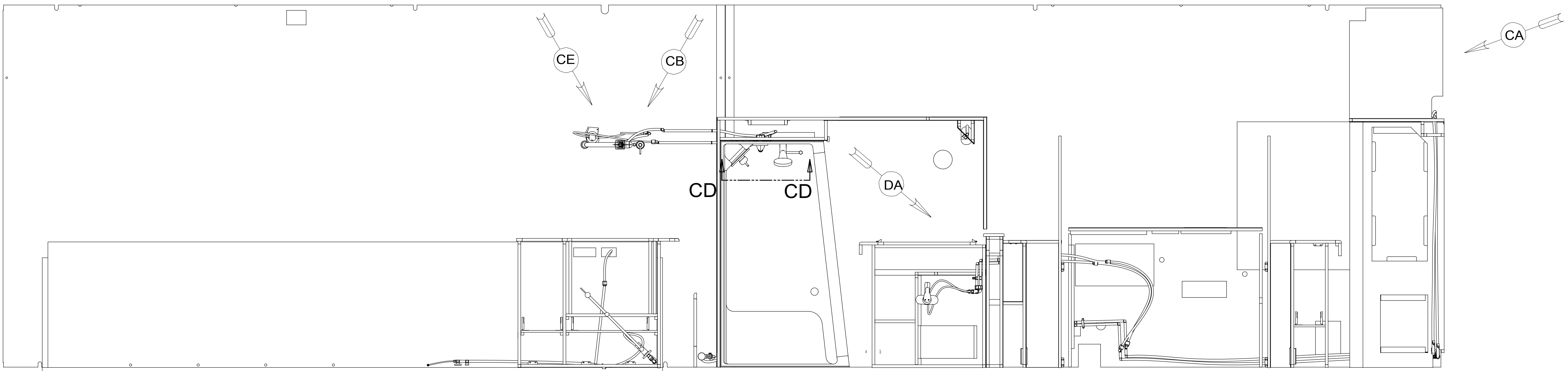
C

B

B

A

A



- 11. FOR INSTALLATION USE SILICON ADHESIVE 131264-05-CHT. APPLY ON TOP OF PLATE, PLACE COVER ON, AND PUT ADHESIVE AROUND COVER.
- 10. INSTALL BYPASS PLUG FOR SYSTEM TESTING AND SHIPPING.
- 9. ALL CRIMP FITTINGS TO 3/4" PEX TUBING REQUIRE 3/4" CLAMP 140171-05-000.
- 8. ALL CRIMP FITTINGS TO 1/2" PEX TUBING REQUIRE 1/2" CLAMP 140171-03-000.
- 7. ALL CRIMP FITTINGS TO 5/8" FLEX TUBING REQUIRE 5/8" CLAMP 140171-04-000.
- 6. LABEL HOT AND COLD SUPPLY TUBES AND TAPE FITTING TO TUBE BEFORE CABINET SET TO PREVENT MOVEMENT.
- 5. ADD PIPE WRAP (LADDER SCRAP 110157-02-000) INSULATION.
- 4. ADD TEFLON TAPE 010405-01-000.
- 3. ALL TUBING TO BE SECURED AT 1200 INTERVALS MAXIMUM WITH CLAMP 010495-01-000 AND SCREW 000G67-10-12U OR EQUIVALENT.
- 2. TUBING TO BE INSTALLED WITH SUFFICIENT SLOPE TO PROVIDE DRAINAGE TO NEAREST VALVE.
- 1. PLASTIC FITTINGS TO BE SEALED WITH SEALANT 084456-01-000.

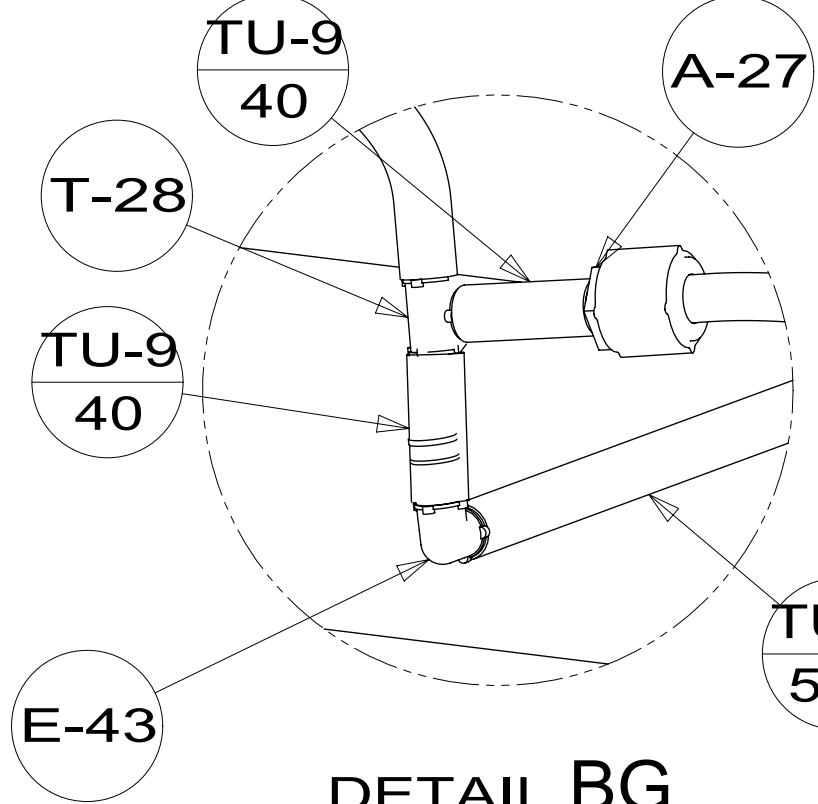
NOTES:

X-X
FOR WATER CALLOUTS SEE DWG NO. 116230-01-000

WINNEBAGO
COPYRIGHT 2016 WINNEBAGO INDUSTRIES, INC.

DSNR:		ALL DIMENSIONS ARE IN MILLIMETERS	
DIFFR:		MATERIAL:	
UNSPECIFIED TOLERANCES:		WEIGHT: (LBS)	FIRST USED: (REF)
WHOLE DIM (X)	3		
ONE-PLACE (X.X)	1.5		
TWO-PLACE (X.XX)	0.50		
ANGLE	1°		
REFER TO ES0018 FOR FASTENER TIGHTENING GUIDELINES			
DESCRIPTION: WATER SYSTEM INSTL			
SHEET: 1 OF 6	ITEM/PART NO: 000209805 / 30211001000	REV:	
REF:		1 19-Sep-2016	

8 7 6 5 4 3 2 1



FAUCET-POT FILLER
187172-01-CHT

BREAKER-VACUUM
125697-04-000
CHECK VALVE
125697-03-000
(MUST BE MOUNTED ABOVE
TOILET FLOOD LEVEL)

FAUCET-LAV
178237-01-CHT

DETAIL BF

DETAIL BE

TU-9
880

CLAMP
010497-02-000

TU10
700

TU-9
630

A-27
2

R-4

R-4

VIEW BA

VIEW BB

I-3

I-1

I-2

V-24

TU-9
40

T-28

TU-9
40

V-22

TU-5
250

TU-9
100

DETAIL BF

CLAMP
010495-04-000 (2)

TU10
275

TU-9
315

TU10
40

TU10
160

E-46
2

E-43
2

TU-9
160

E-43
2

TU10
130

TU10
40

E-43
2

TU-9
40

T-28
2

TU-9
40

E-43
2

TU-9
130

DETAIL BD
(SHOWN W/OUT FLOOR & CABINETS)

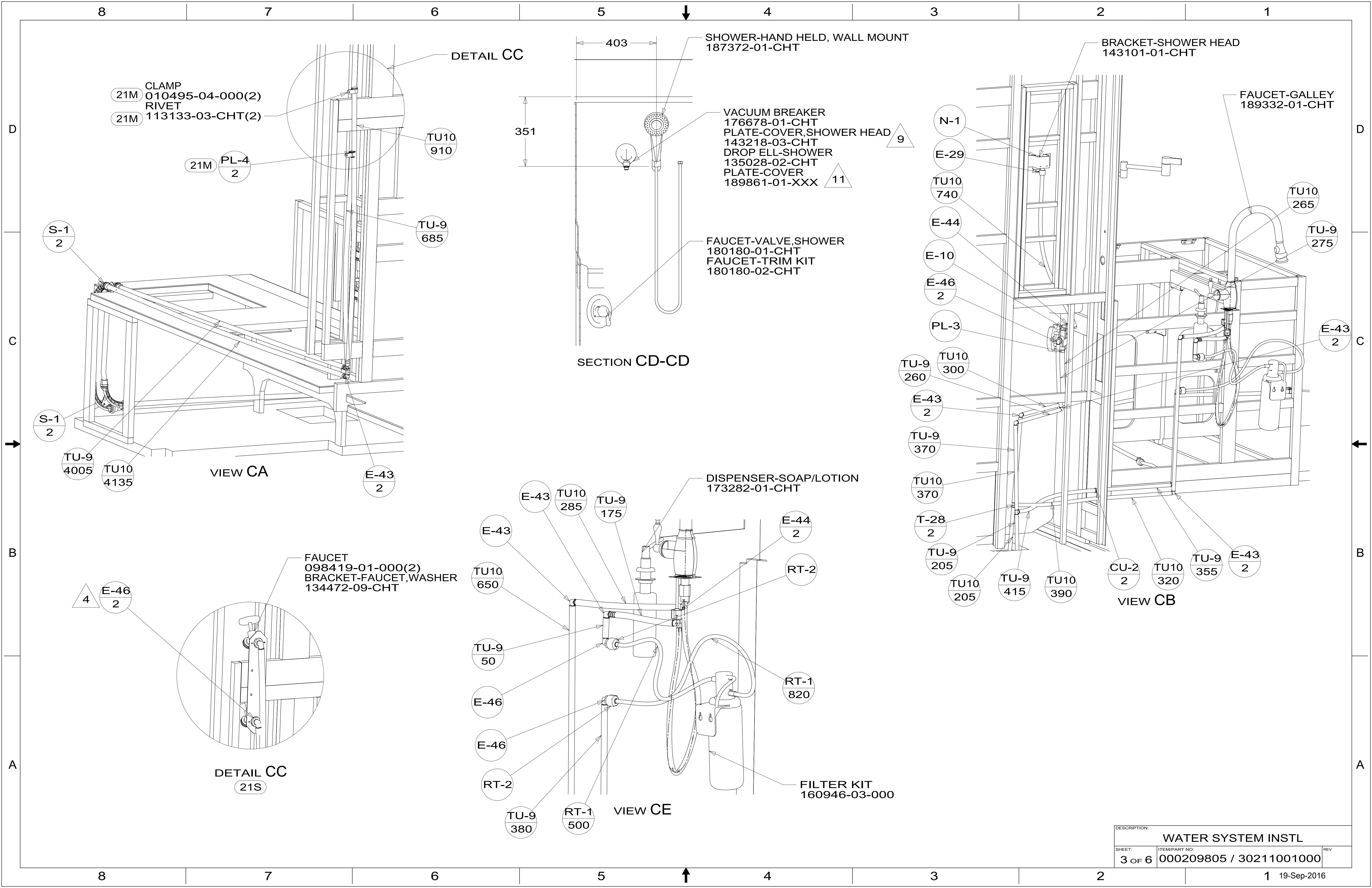
TO TOILET

E-44

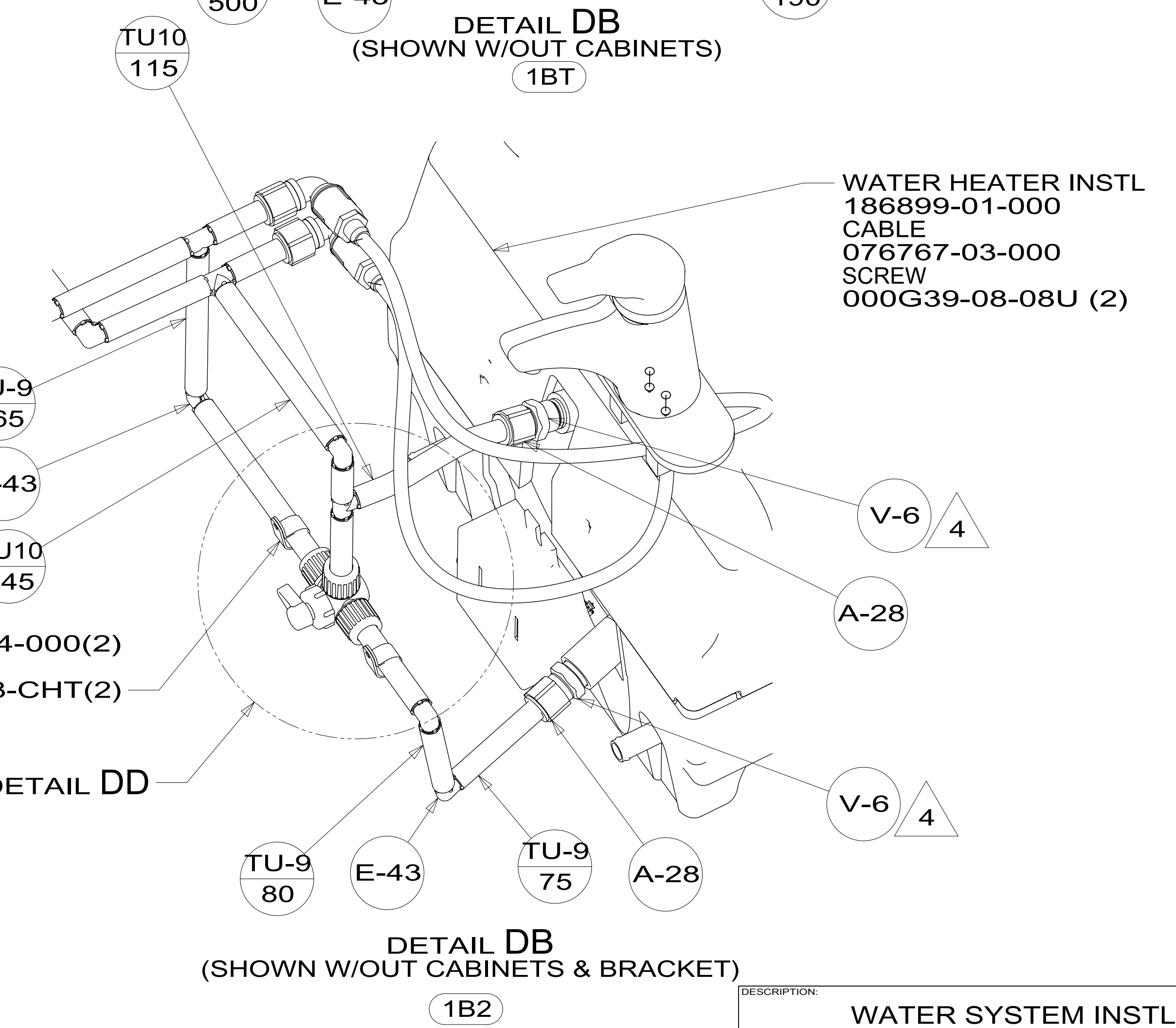
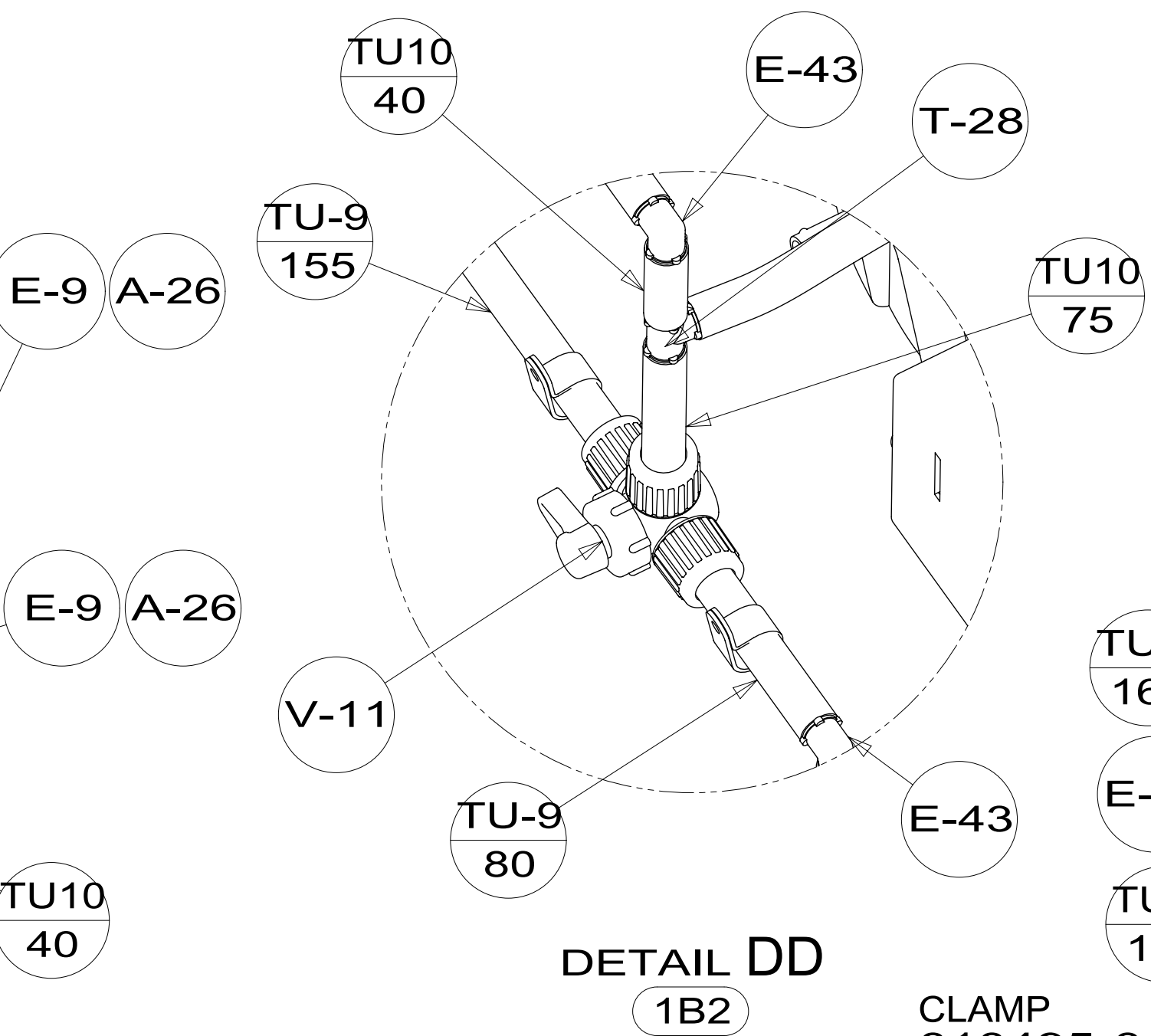
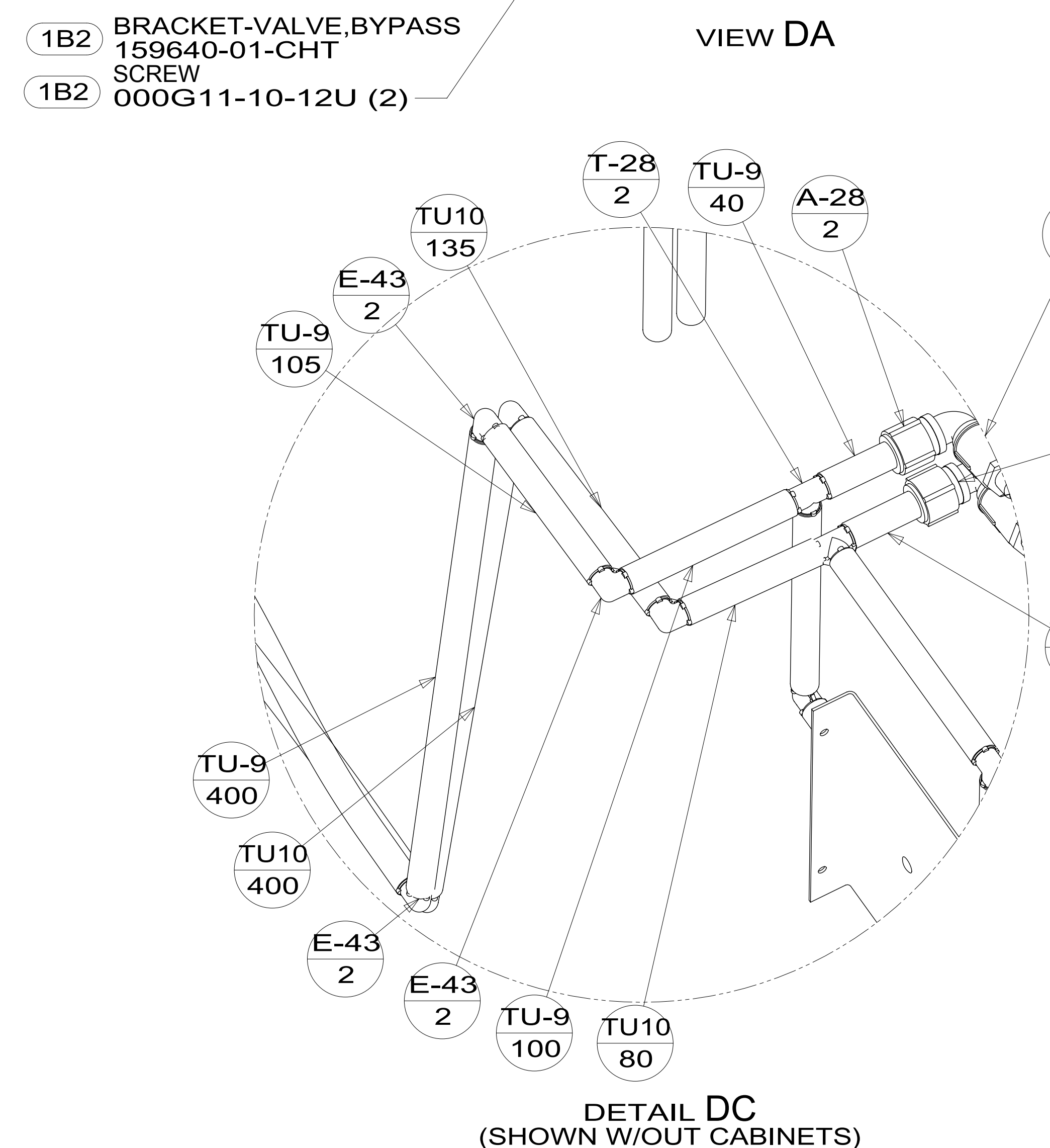
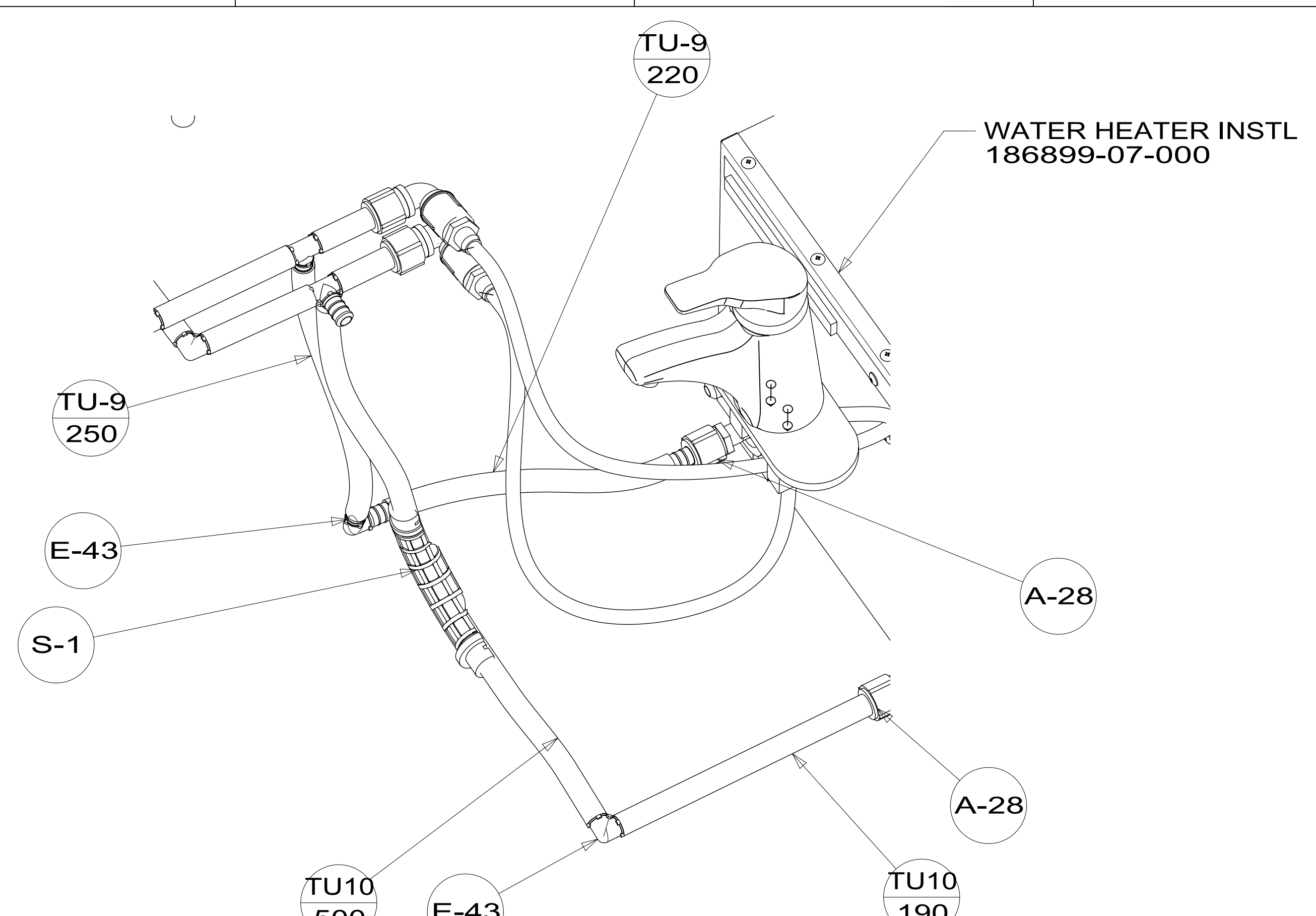
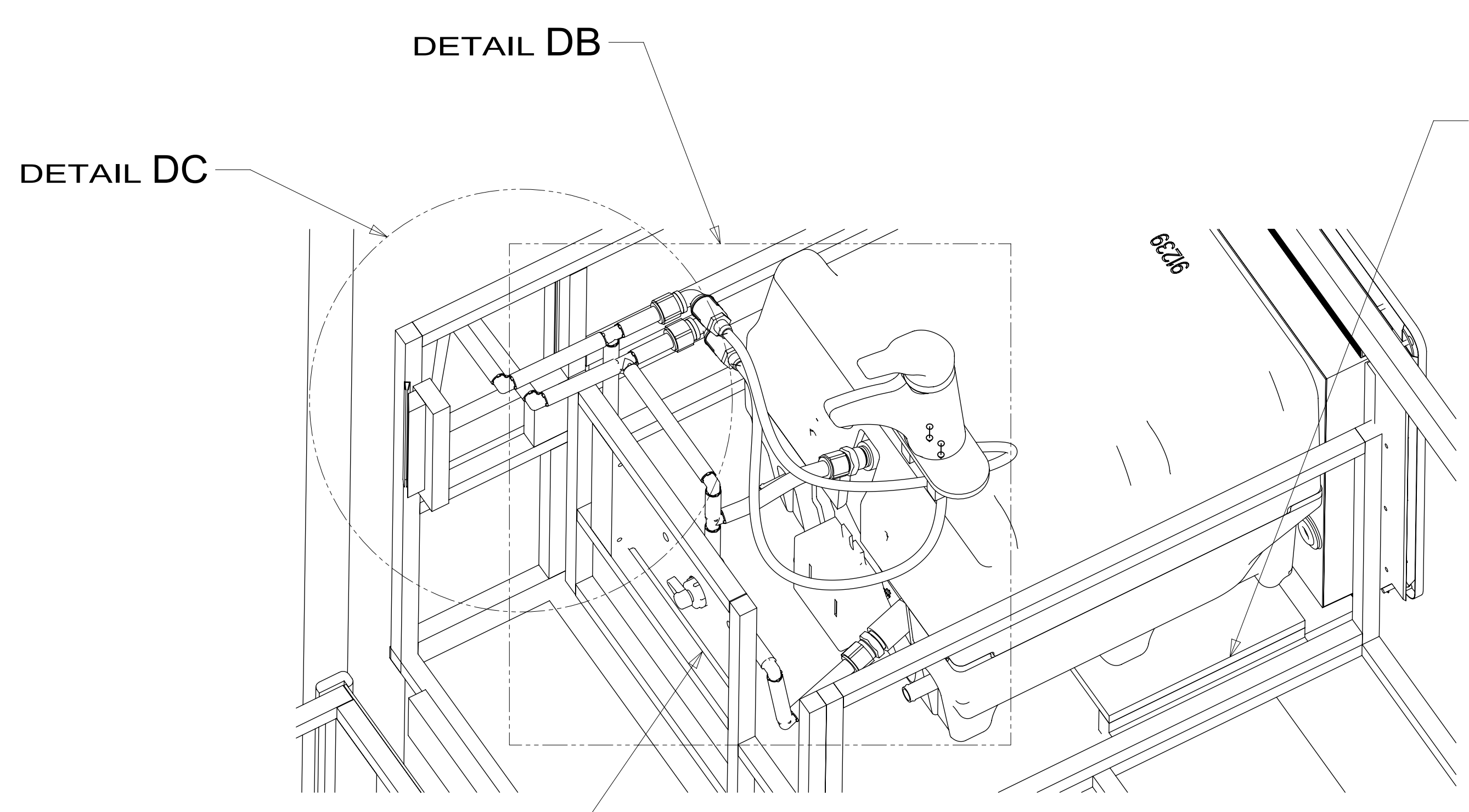
TU-8
285

DETAIL BE
(SHOWN W/OUT CABINETS)

DESCRIPTION: WATER SYSTEM INSTL		
SHEET: 2 OF 6	ITEM/PART NO: 000209805 / 30211001000	REV



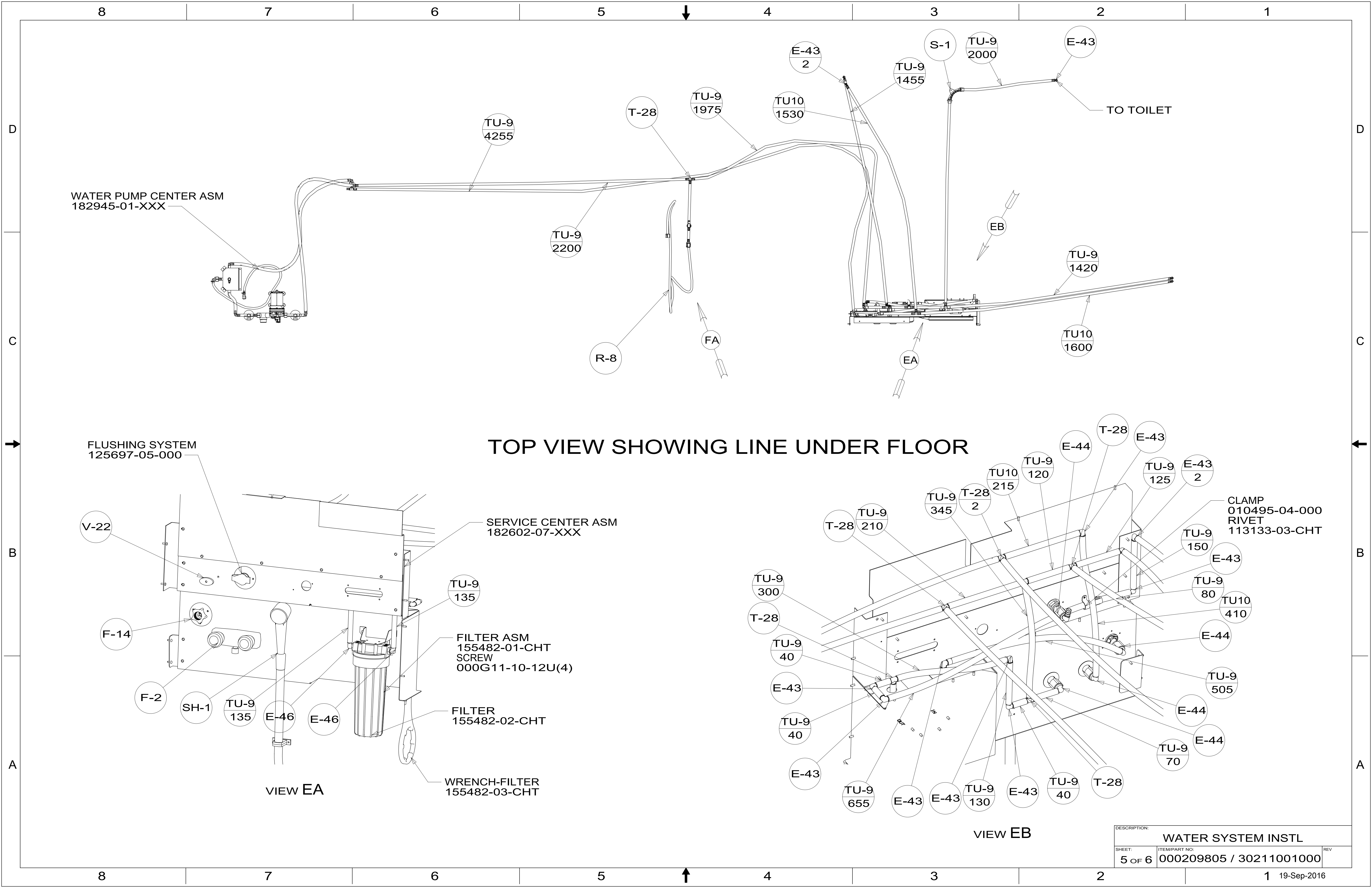
8 7 6 5 4 3 2 1



CLAMP
010495-04-000(2)
RIVET
113133-03-CHT(2)

DESCRIPTION:		
WATER SYSTEM INSTL		
SHEET:	ITEM/PART NO.:	REV
4 OF 6	000209805 / 30211001000	

8 7 6 5 4 3 2 1 19-Sep-2016



TOP VIEW SHOWING LINE UNDER FLOOR

VIEW EA

VIEW EB

DESCRIPTION:		
WATER SYSTEM INSTL		
SHEET:	ITEM/PART NO:	REV
5 OF 6	000209805 / 30211001000	

8

7

6

5

↓

4

3

2

1

D

D

C

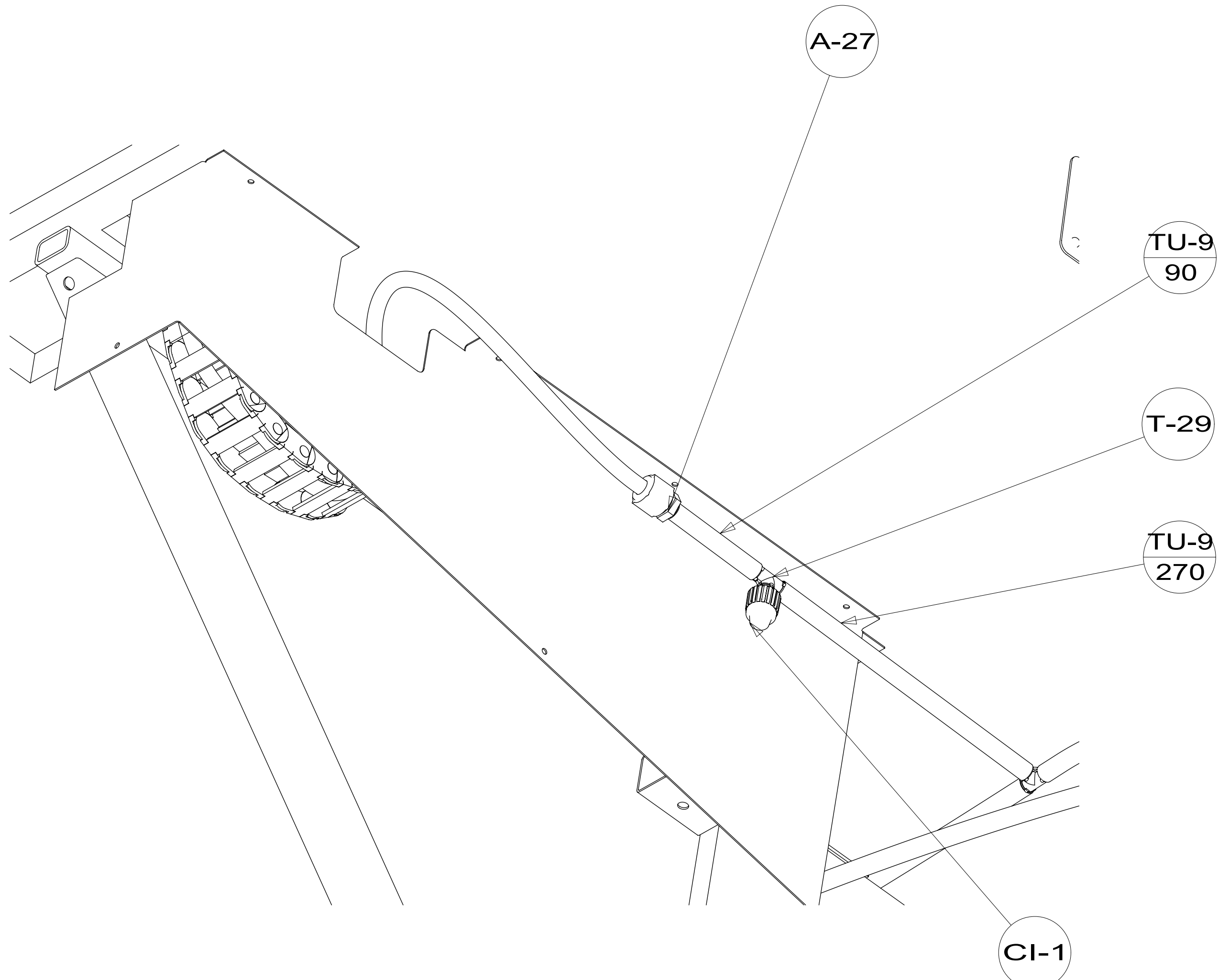
C

B

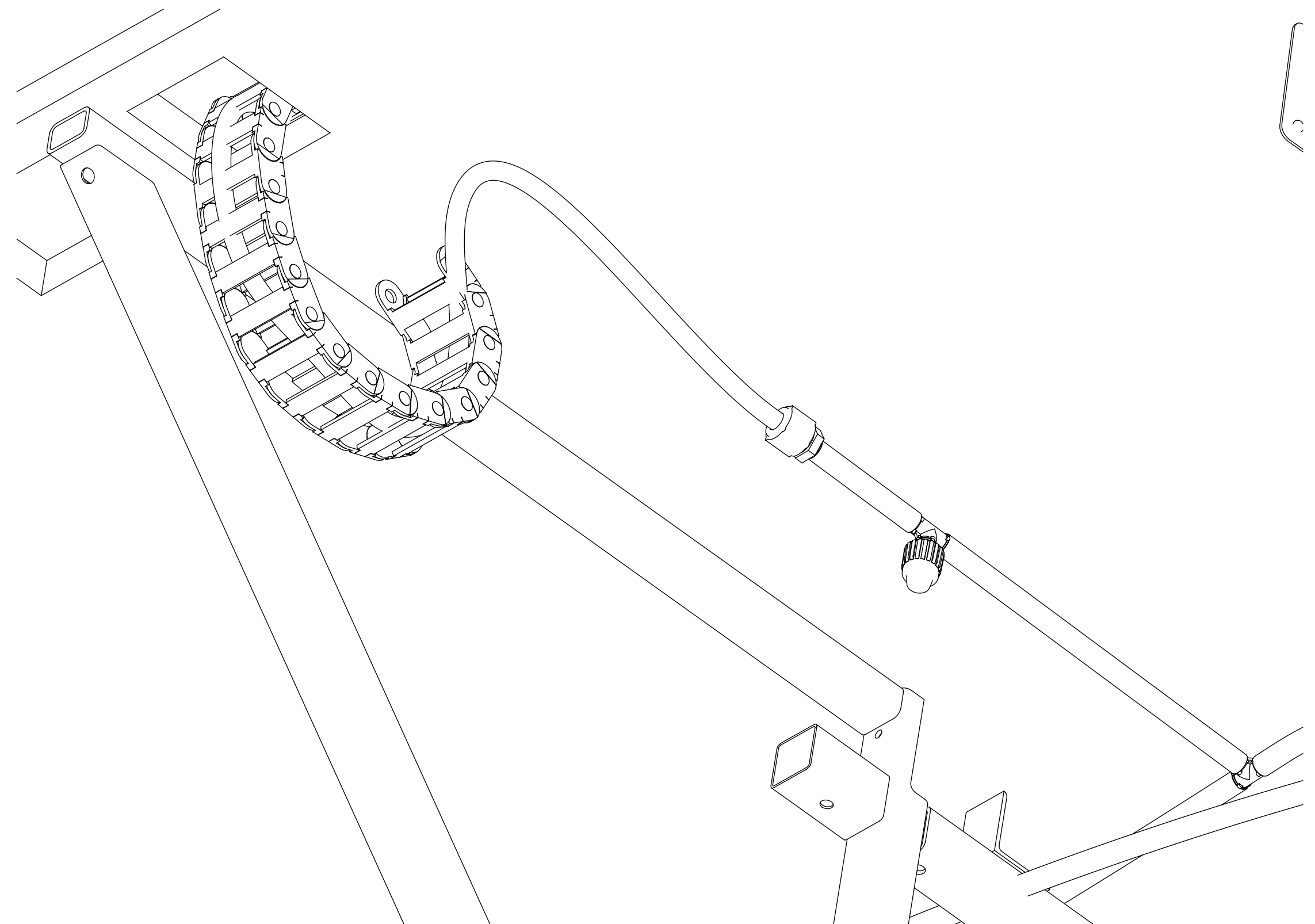
B

A

A



VIEW FA
(SHOWING W/RISER ASM-FLOOR & PANEL-CLOSEOUT)



VIEW FA
(SHOWING W/RISER ASM-FLOOR)

DESCRIPTION:		
WATER SYSTEM INSTL		
SHEET:	ITEM/PART NO:	REV
6 OF 6	000209805 / 30211001000	

8

7

6

5

↑

4

3

2

1

19-Sep-2016