

- NOTES:
- 4 SET BLU-RAY PLAYER TO A MAX VIDEO OUTPUT OF 1080i.
 - 3 STICK I.E. FOR BLU-RAY PLAYER ON FRONT OF BLU-RAY PLAYER AS SHOWN. (90 MM FROM RIGHT SIDE)
 - 2 INTERIOR CONTROL CONNECTS TO SATELLITE DATA CABLE. SEE ROOF ASM FOR ADDITIONAL INFORMATION.
 - 1 SEE LOAD CENTER/ATS FOR ADDITIONAL INFORMATION.

- 783 SATELLITE HD TV SYSTEM AUTOC
- 68R TV - FRONT
- 78C SATELLITE SYSTEM READY
- 48P SAT TV SYSTEM IN-MOTION
- 1H5 TV, FRONT-WITHOUT
- 265 CODES/STANDARDS-CSA/CMVSS
- 1B1 CODES/STANDARDS USA

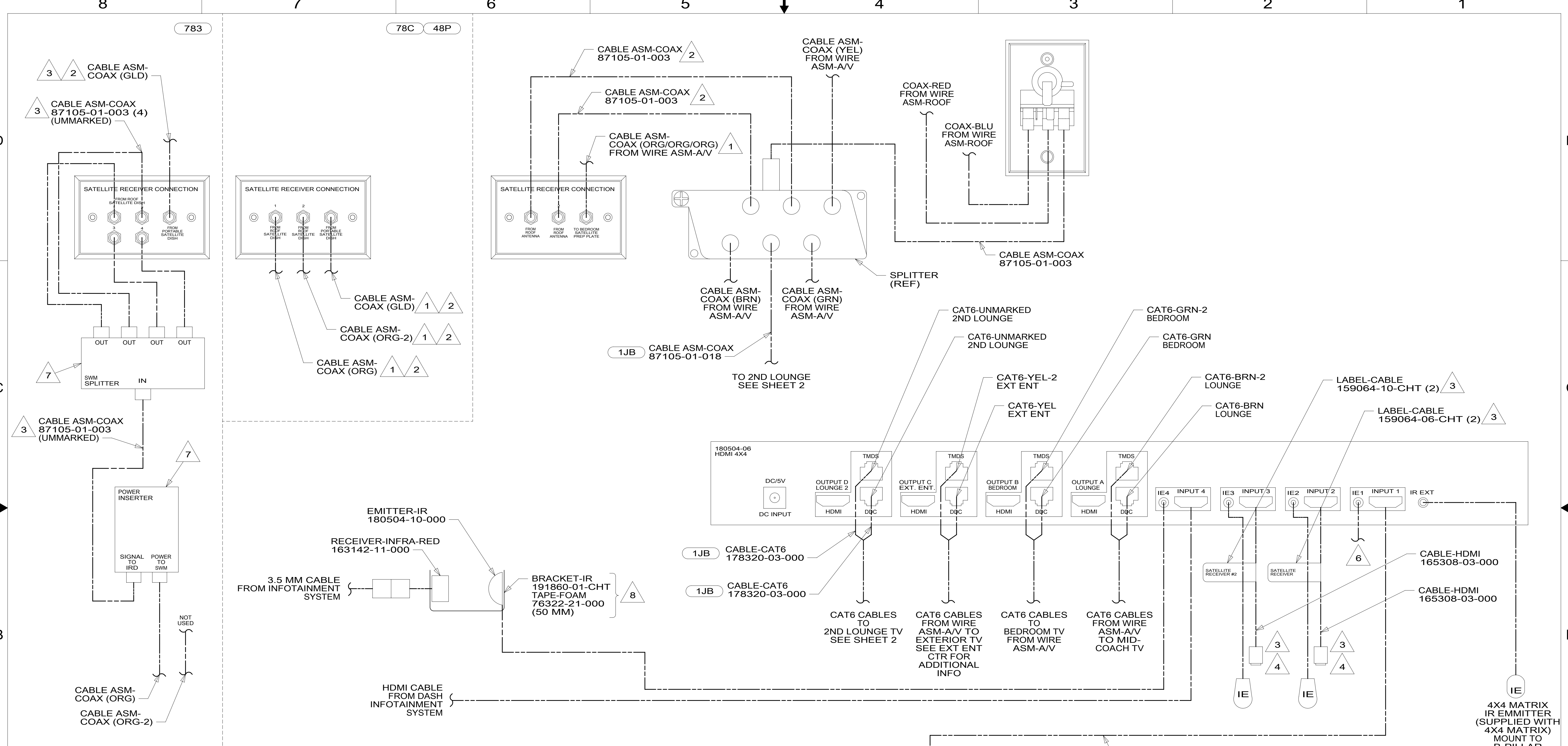
WINNEBAGO
 COPYRIGHT 2016 WINNEBAGO INDUSTRIES, INC.

| | | |
|--|---------------------------------------|-------------|
| DSNR: | ALL DIMENSIONS ARE IN MILLIMETERS | |
| DFFR: | | |
| UNSPECIFIED TOLERANCES: | | MATERIAL: |
| WHOLE DIM (X) | 3 | |
| ONE-PLACE (X.X) | 1.5 | |
| TWO-PLACE (X.XX) | 0.50 | |
| ANGLE | 1° | |
| REFER TO ES0018 FOR FASTENER TIGHTENING GUIDELINES | WEIGHT: (LBS) | FIRST USED: |
| DESCRIPTION: WIRING INSTL-TV/DVD | | |
| SHEET: 1 OF 4 | ITEM/PART NO: 000209778 / 30204601000 | REV: |

REF: 1 20-Sep-2016

FOR ELECTRICAL TORQUE SPECIFICATIONS SEE DWG NO. 128783-01-000

FOR ELECTRICAL CALLOUTS SEE DWG NO. 121339-01-000



- NOTES:**
- 8 PLACE ABOVE 4X4 MATRIX.
 - 7 PARTS ARE SUPPLIED WITH INTERIOR CONTROL 183415-05-000.
 - 6 SEE SHEET 1 FOR I.E. PLACEMENT.
 - 5 SET DVD/BLU-RAY PLAYER FOR MAX VIDEO OUTPUT TO 1080i.
 - 4 COIL CABLE IN SATELLITE PREPARED FOR FUTURE USE.
 - 3 ATTACH LABEL 100 MM FROM EACH END OF CABLE AND 400 MM FROM THE END OF THE IR EMITTER CABLE.
 - 2 CABLE CONNECTS TO REAR SIDE OF PLATE.
 - 1 CABLE ROUTED IN ROOF.

- 783 SATELLITE HD TV SYSTEM AUTOC
- 78C SATELLITE SYSTEM READY
- 48P SAT TV SYSTEM IN-MOTION
- 265 CODES/STANDARDS-CSA/CMVSS
- 1B1 CODES/STANDARDS USA

FOR ELECTRICAL TORQUE SPECIFICATIONS SEE DWG NO. 128783-01-000

FOR ELECTRICAL CALLOUTS SEE DWG NO. 121339-01-000

| | | | |
|--------------|-------------------------|----------------------------|--|
| DESCRIPTION: | | WIRING INSTL-TV/DVD | |
| SHEET: | ITEM/PART NO.: | REV: | |
| 2 OF 4 | 000209778 / 30204601000 | | |

VIEW BA

MATRIX-HDMI,BALUN GEN 2
180504-07-000
BRACKET-MOUNTING,RECEIVER
180543-03-CHT
SCREW
076790-05-000 (2)

TV-32.FLAT
PANEL ELED,HDTV
194668-01-000
SCREW
OMC31K-08-025 (4)
WASHER
156569-01-CHT (4)

BRACKET ASM-MOUNT,TV
187224-03-CHT
SCREW
G67-10-12U (12)

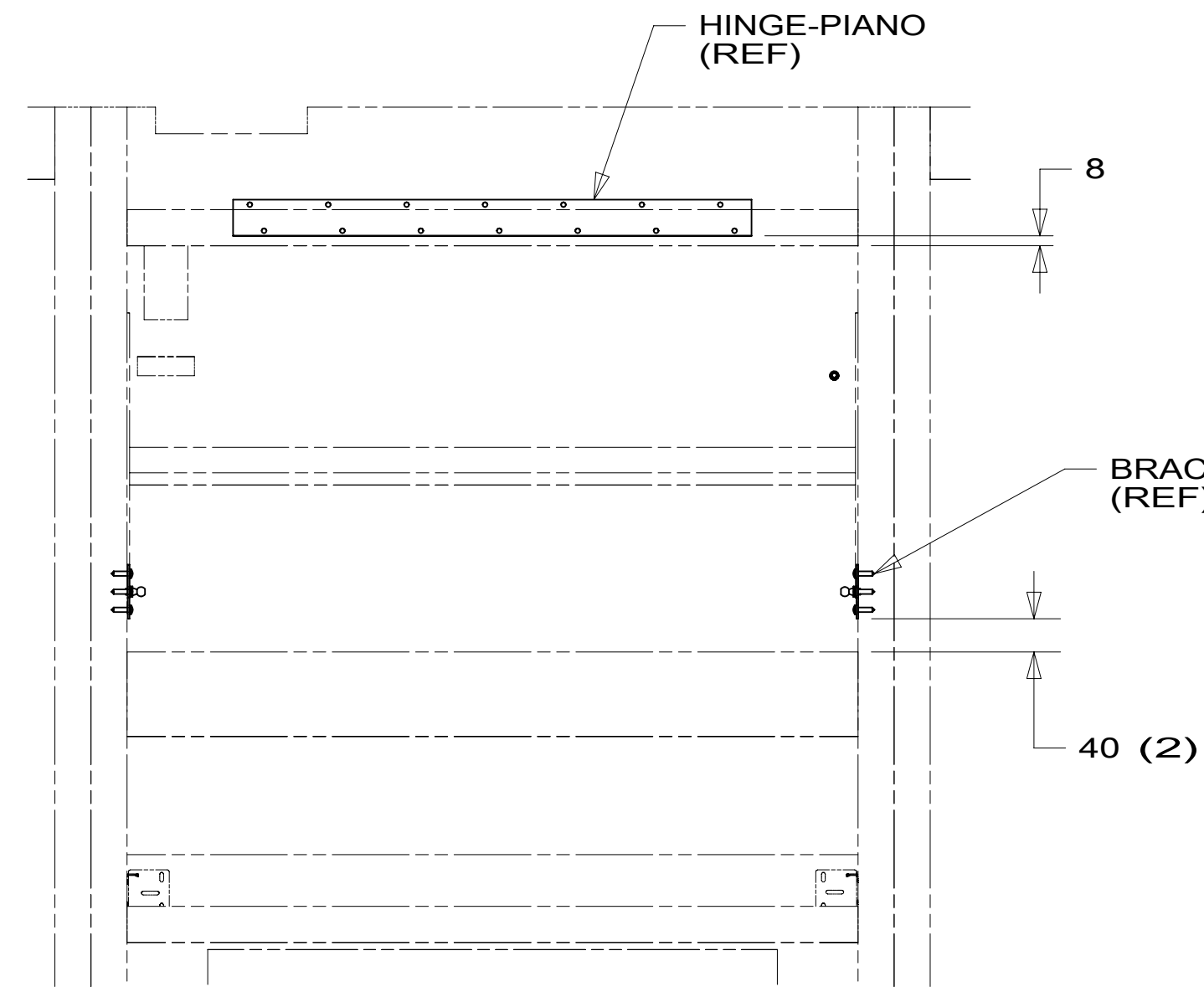
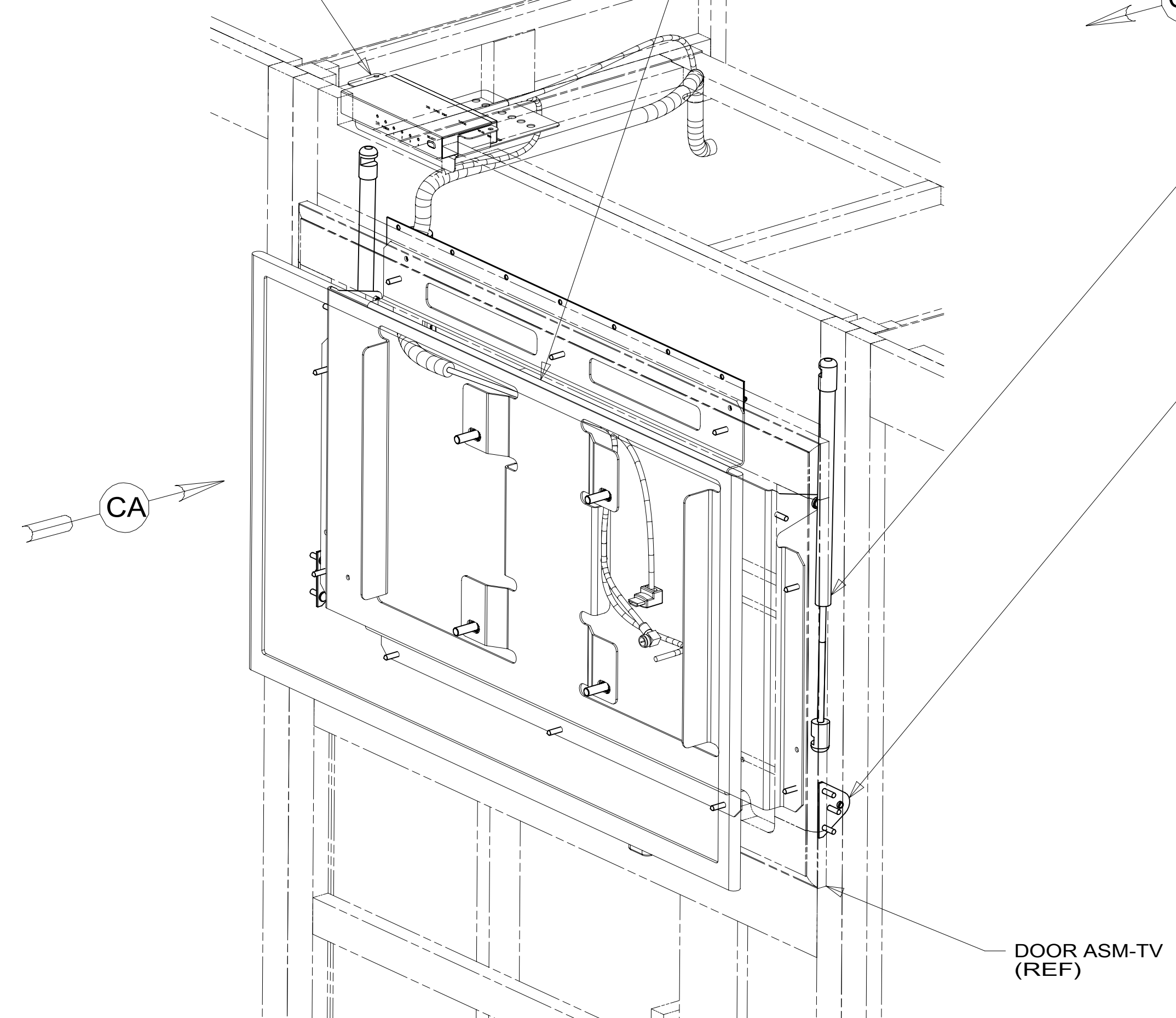
CLAMP
10497-03-000

SLEEVE-BRAIDING
139049-02-00
(900 MM)

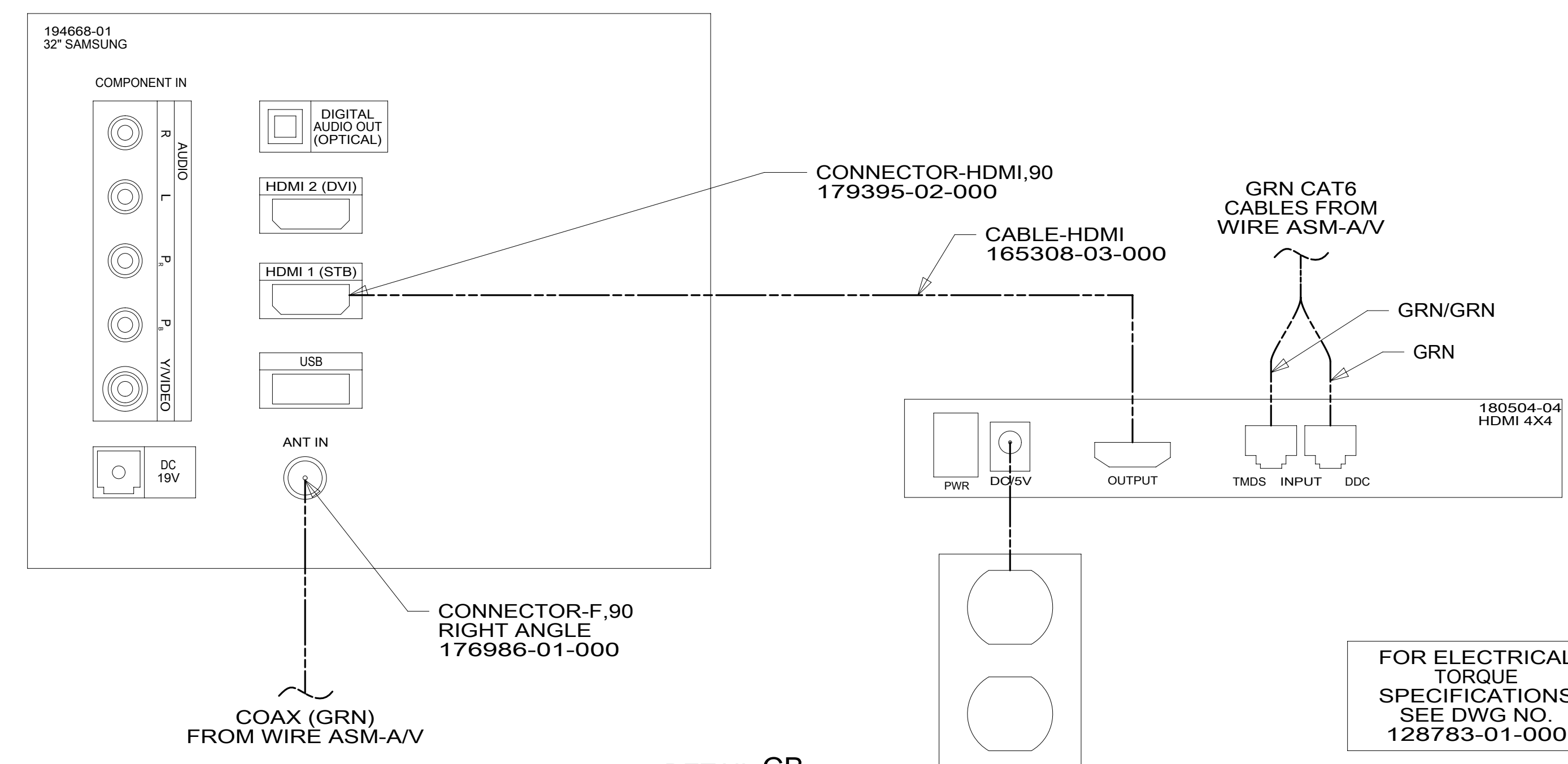
CONNECTOR-
HDMI,90
179395-02-000

CONNECTOR-F,
90 RIGHT ANGLE
176986-01-000

VIEW CC



VIEW CA
(TV NOT SHOWN)



1 USE TIE-WIRE 8343-04-000 TO ATTACH WIRE ASM TO HOLES IN BRACKET ASM-MOUNT,TV.

FOR ELECTRICAL TORQUE SPECIFICATIONS SEE DWG NO. 128783-01-000

FOR ELECTRICAL CALLOUTS SEE DWG NO. 121339-01-000

265 CODES/STANDARDS-CSA/CMVSS
1B1 CODES/STANDARDS USA

| | | |
|----------------------------|-------------------------|-----|
| DESCRIPTION: | 1B1 265 | |
| WIRING INSTL-TV/DVD | | |
| SHEET: | ITEM/PART NO: | REV |
| 3 OF 4 | 000209778 / 30204601000 | |

D

D

C

C

B

B

A

A

TV-50,FLAT
PANEL ELED, HDTV
194671-01-000
BOLT
OMC31K-08-025 (4)
WASHER
156569-01-CHT (4)

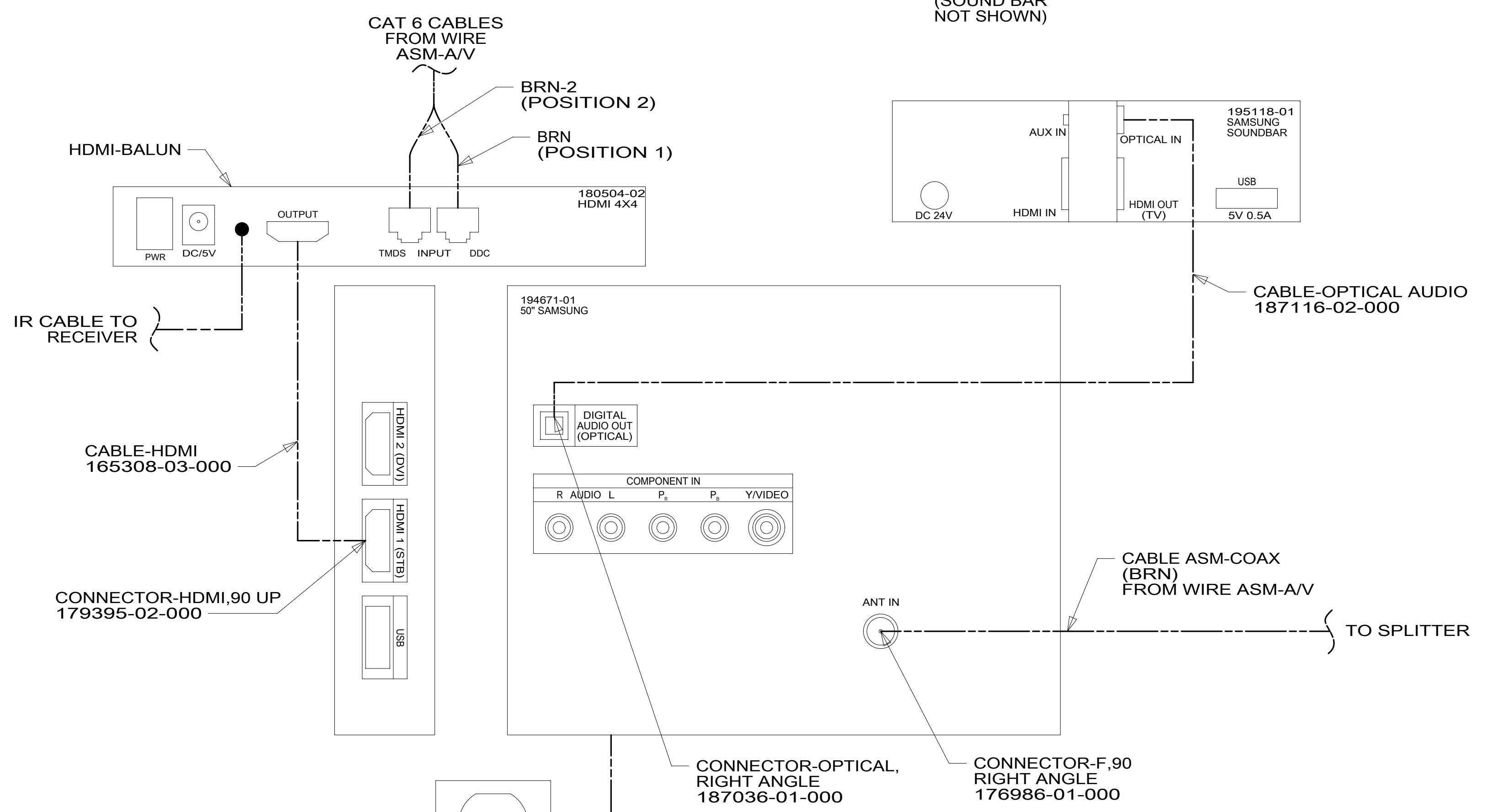
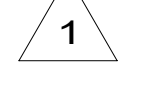
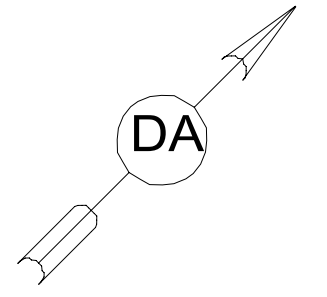
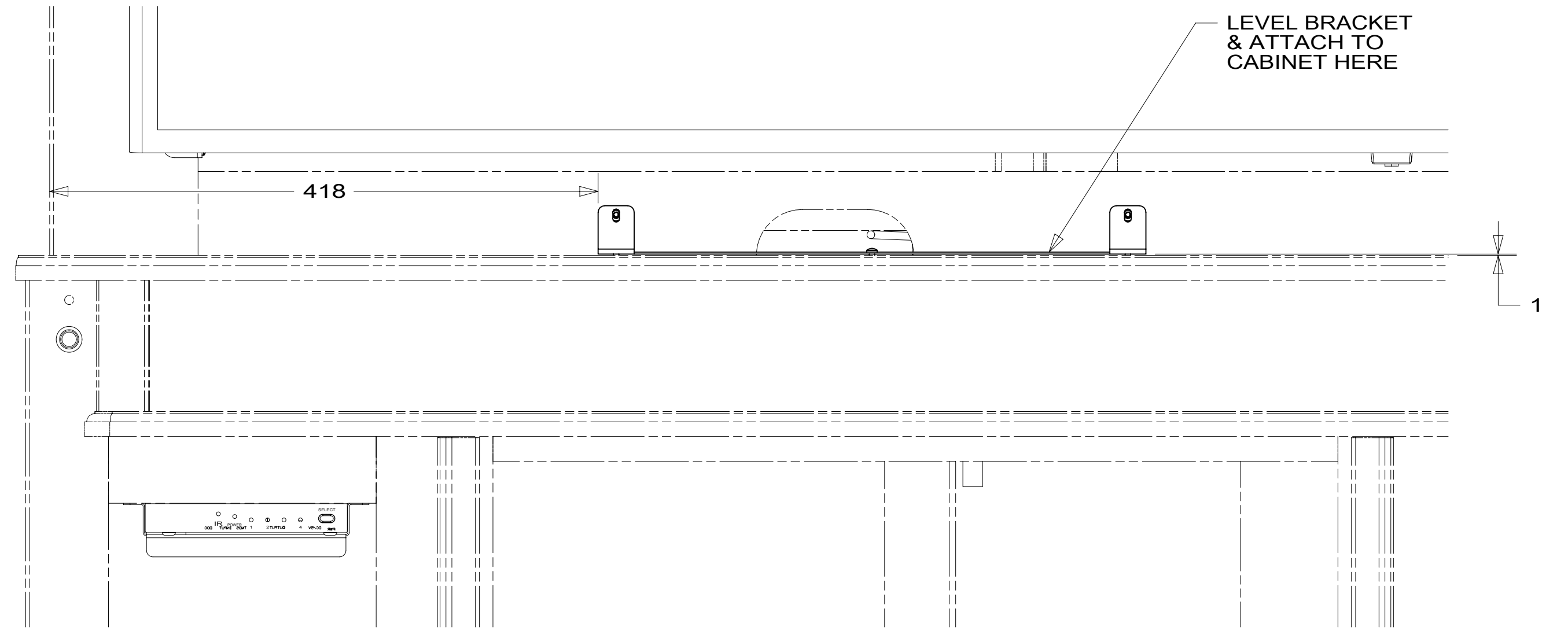
SPEAKER-SOUNDBAR W/SUB
195118-01-000
BRACKET-SOUNDBAR,
SAMSUNG,HW-J450
000008688 / 310880-01-CHT
SCREW
G11-08-12U (3)
SCREW
OMG02U-04-010 (2)

MATRIX-HDMI,IR
REC IN-WALL
180504-08-000

MATRIX-HDMI,BALUN
180504-07-000
BRACKET-MOUNTING,
RECEIVER
180543-03-CHT
SCREW
G11-08-12U (2)

BRACKET ASM INSTL-TV,50"SAMSUNG
000002342 / 310056-01-XXX

CLAMP
10497-10-000 (2)
SCREW
G11-08-10U (2)



VIEW DB

1 USE TIE-WIRE 8343-04-000 TO ATTACH WIRE ASM TO HOLES IN BRACKET ASM INSTL-TV,50"SAMSUNG.

FOR ELECTRICAL TORQUE SPECIFICATIONS SEE DWG NO. 128783-01-000

FOR ELECTRICAL CALLOUTS SEE DWG NO. 121339-01-000

265 CODES/STANDARDS-CSA/CMVSS
1B1 CODES/STANDARDS USA

| | | | |
|----------------------------|-------------------------|---------|--|
| DESCRIPTION: | | 1B1 265 | |
| WIRING INSTL-TV/DVD | | | |
| SHEET: | ITEM/PART NO.: | REV | |
| 4 OF 4 | 000209778 / 30204601000 | | |