

RCP-2 (PUR)
OVHD

PANEL ASM-VINYL COVERED
155127-40-XXX

48P SWITCH-SATELLITE
186102-02-CHT
DETAIL AA

PANEL-SERVICE
132862-10-CHT
SCREW
G11-07-08U (4)

PLATE-WALL
149557-11-CHT
SCREW
G67-10-08U (2)

PLATE-WALL
149557-14-CHT ← 783
149557-10-CHT ← 78C 48P
SCREW
G67-10-08U (2)

BRACKET-110V
CONNECTOR,MOUNT
155223-05-CHT

RCP-2 (DET AB)
SAT PREP

RCP-2 (PUR)
SAT PREP 2 783

RCP-2 (PUR)
SAT PREP 3

MATRIX-HDMI
180504-06-000
BRACKET
188374-01-CHT (3)

BRACKET-VIDEO SWITCH
156586-08-CHT
RIVET
113133-01-CHT (2)

BRACKET-IR
(REF)

PLATE-WALL
179004-02-CHT

SPLITTER-TV,6-WAY
86756-04-000

RCP-2 (PUR)
DVD PLAYER

PANEL ASM-
VINYL COVERED
181888-01-XXX

LIGHT-READING
174060-01-CHT
SCREW
SUPPLIED W/LIGHT

783 2 CONTROL-INTERIOR
183415-05-000
FASTENER-DUAL LOCK
85774-01-000 (200 MM)
85774-02-000 (200 MM)

BLU-RAY PLAYER
302822-01-000 ← 4
FASTENER-DUAL LOCK
85774-01-000 (200 MM) (2)
85774-02-000 (200 MM) (2)

MATRIX-HDMI,IR EMITTER
180504-10-000 3

MATRIX-HDMI,IR EMITTER
180504-10-000 (2)
(SATELLITE PREP)

1 68R THROW IN #7

RCP-2
SAT PREP
(PUR)

TO FRONT TV RECP
DETAIL BA

FROM SIDEWALL
TO RCP-PASS CONSOLE

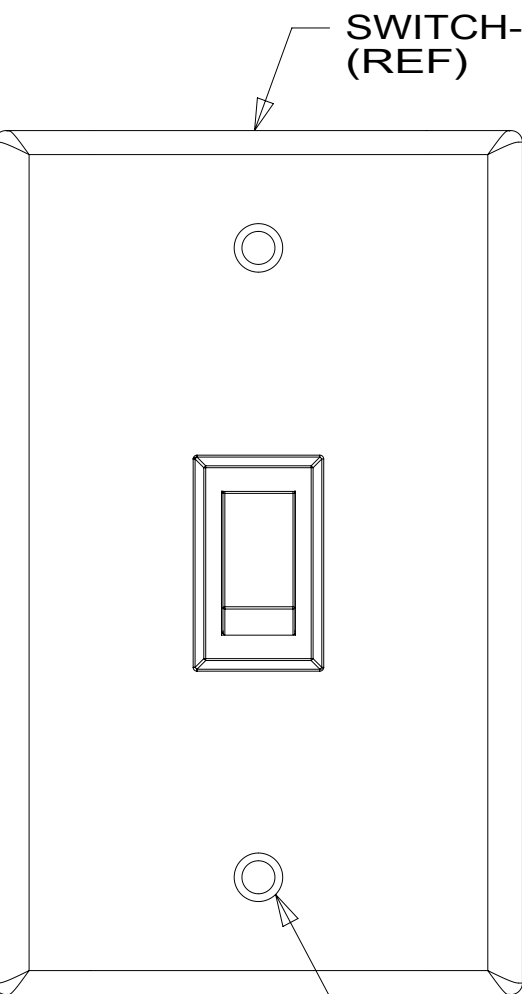
PUR
FROM ROOF

TO RCP DVD

DETAIL AB

FOR ELECTRICAL
TORQUE
SPECIFICATIONS
SEE DWG NO.
128783-01-000

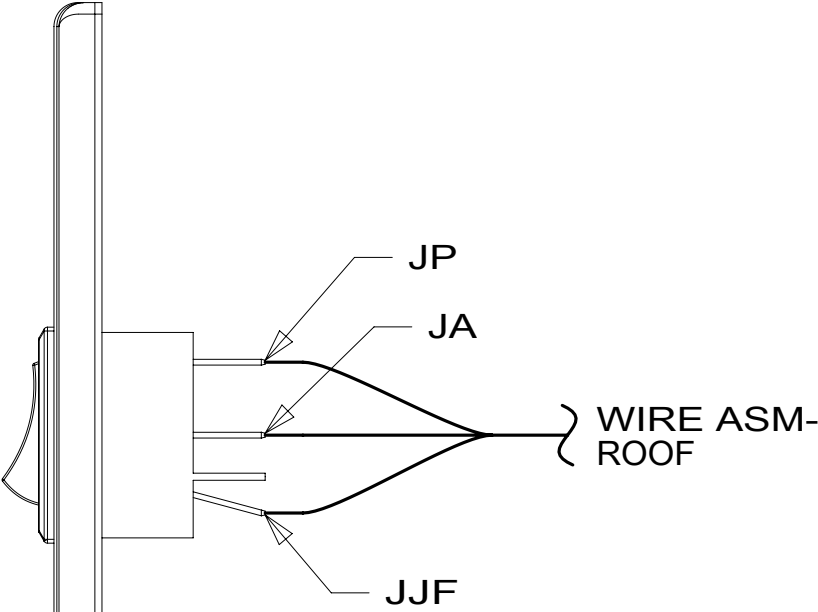
FOR ELECTRICAL
CALLOUTS
SEE DWG NO.
121339-01-000



SWITCH-SATELLITE
(REF)

SCREW
G12-06-12U (2)

DETAIL AA 48P



JP

JA

WIRE ASM-
ROOF

JJF

783 SATELLITE HD TV SYSTEM AUTOC

68R TV - FRONT

78C SATELLITE SYSTEM READY

48P SAT TV SYSTEM IN-MOTION

1H5 TV, FRONT-WITHOUT

265 CODES/STANDARDS-CSA/CMVSS

1B1 CODES/STANDARDS USA

1B1 265 1H5



DSNR:		ALL DIMENSIONS ARE IN MILLIMETERS	
DFTR:		MATERIAL:	
UNSPECIFIED TOLERANCES:			
WHOLE DIM (X)	±	3	
ONE-PLACE (X.X)	±	1.5	
TWO-PLACE (X.XX)	±	0.50	
ANGLE	±	1°	
REFER TO ES0018 FOR FASTENER TIGHTENING GUIDELINES		WEIGHT: (LBS)	FIRST USED:
DESCRIPTION: WIRING INSTL-TV/DVD			
SHEET: 1 OF 5	ITEM/PART NO: 000209777 / 30204401000	REF:	

- 4 SET BLU-RAY PLAYER TO A MAX VIDEO OUTPUT OF 1080i.
- 3 STICK I.E. FOR BLU-RAY PLAYER ON FRONT OF BLU-RAY
PLAYER AS SHOWN. (90 MM FROM RIGHT SIDE)
- 2 INTERIOR CONTROL CONNECTS TO SATELLITE DATA CABLE.
SEE ROOF ASM FOR ADDITIONAL INFORMATION.
- 1 SEE LOAD CENTER/ATS FOR ADDITIONAL INFORMATION.

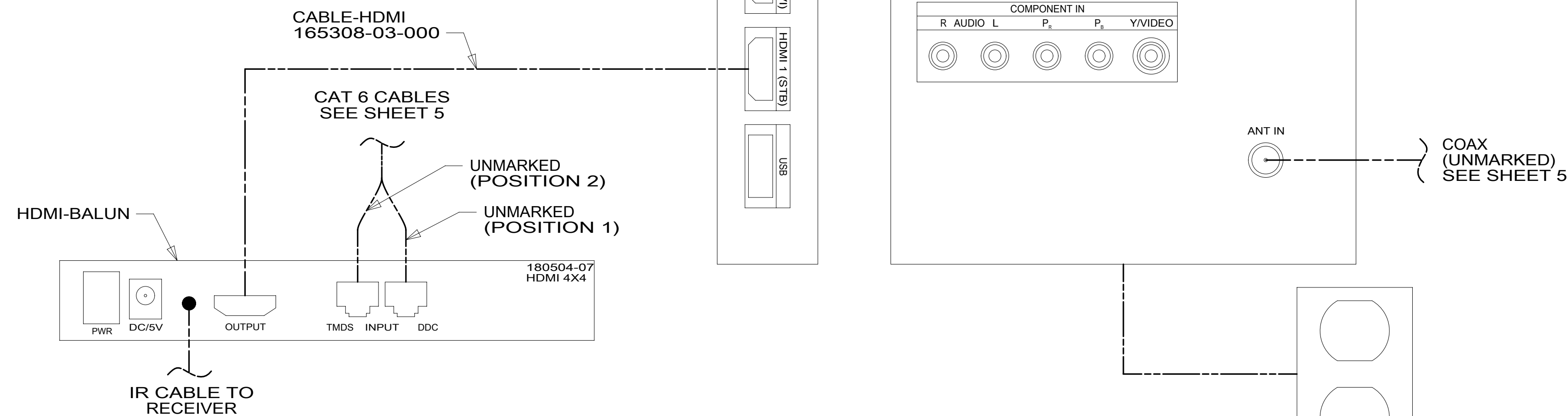
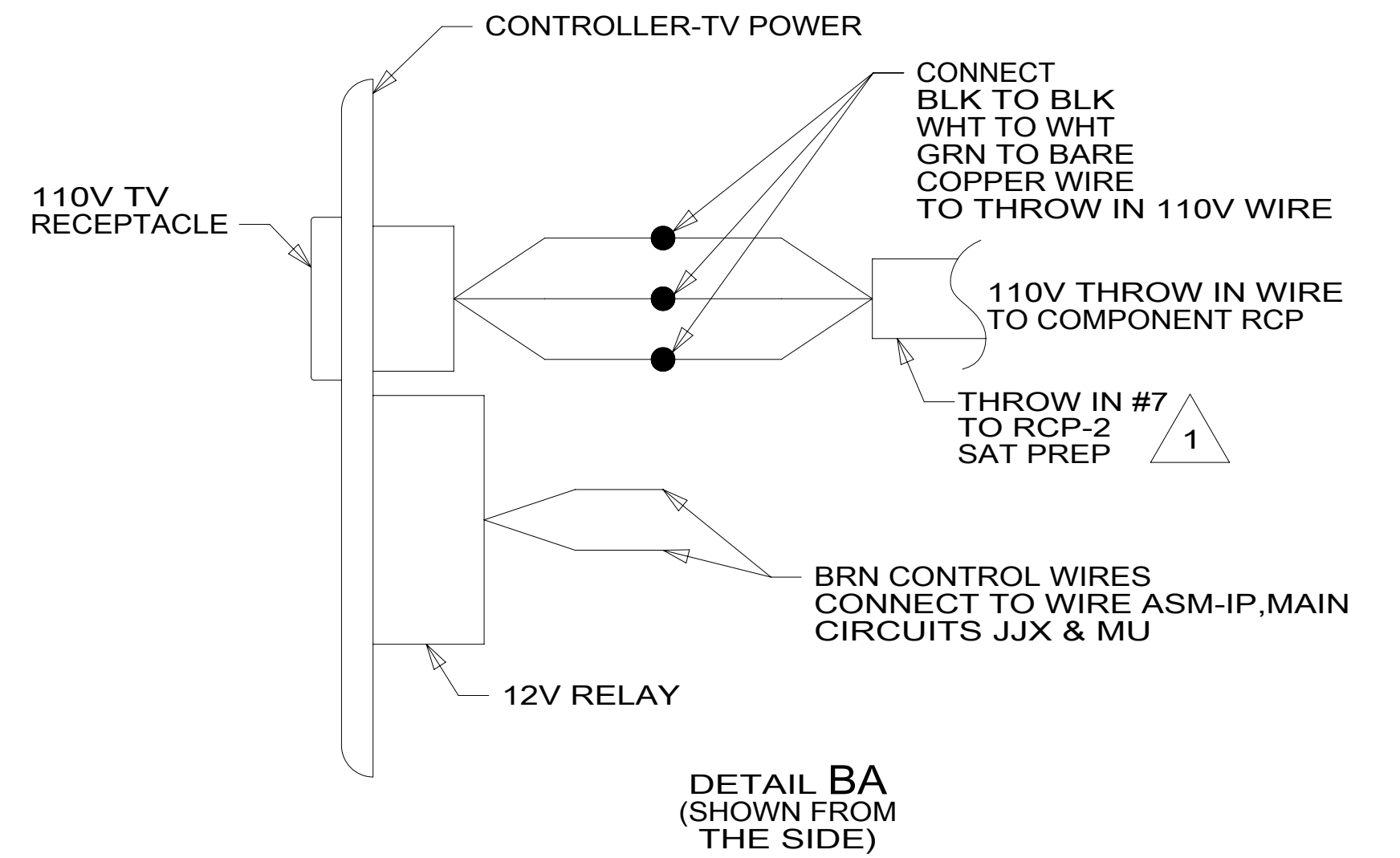
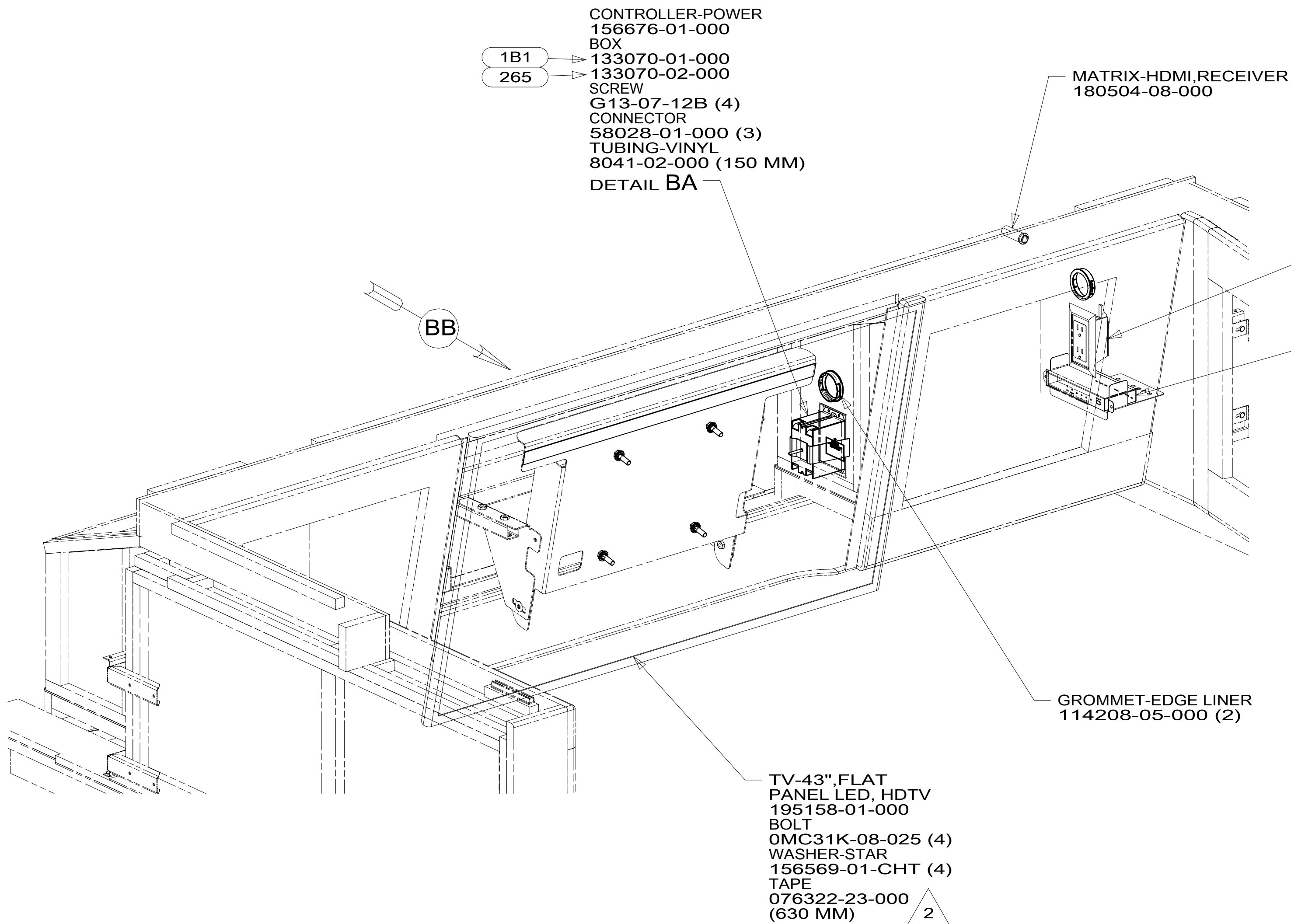
NOTES:

A

B

C

D



VIEW BB

2 CLEAN AND APPLY ADHESIVE PROMOTER 87211-01-000 TO BOTH SURFACES AND BOND WHERE TOP FLANGE OF BRACKET CONTACTS PLASTIC TV BEZEL.

1 SEE LOAD CENTER/ATS FOR ADDITIONAL INFORMATION.

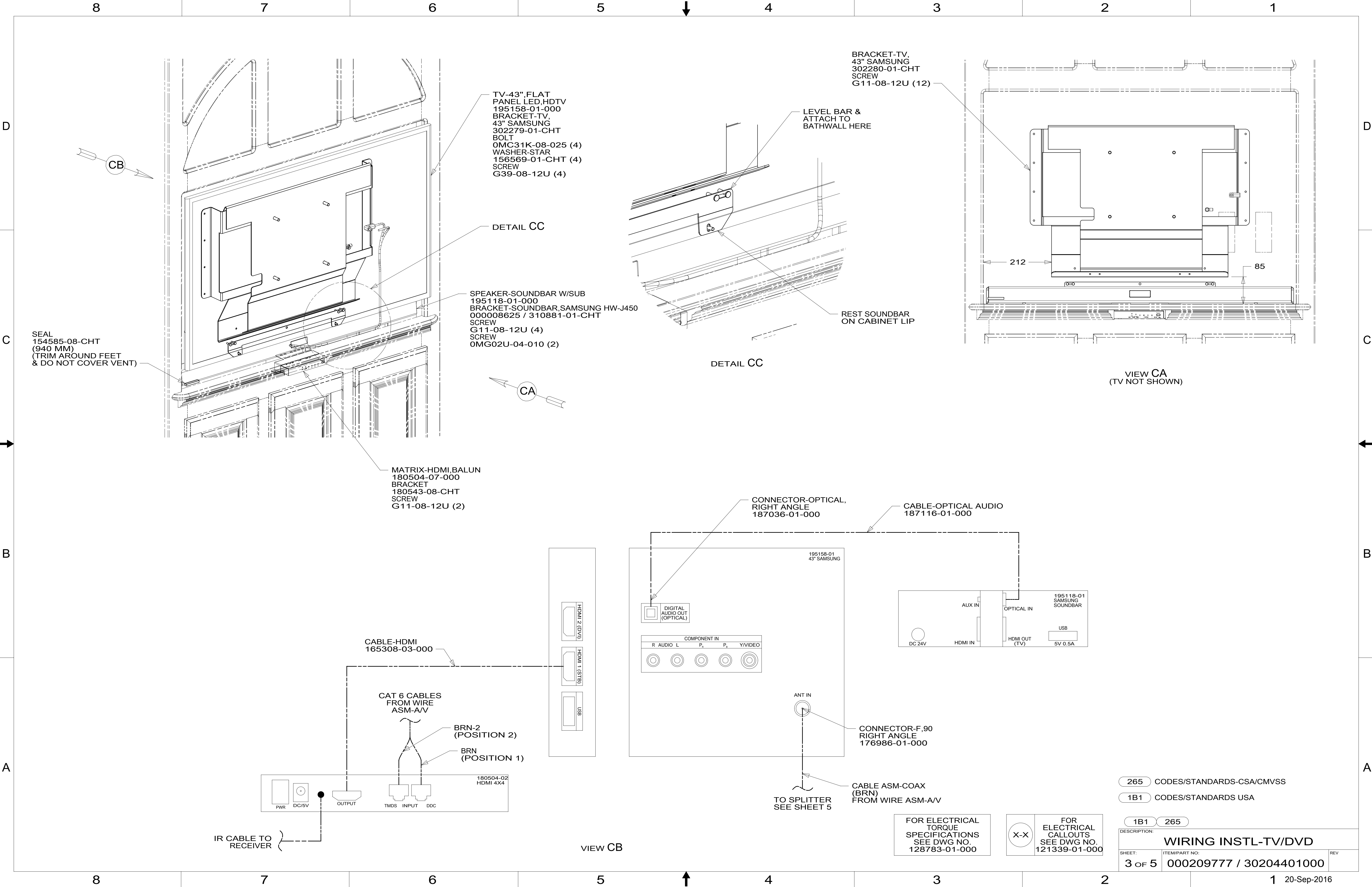
NOTES:

FOR ELECTRICAL TORQUE SPECIFICATIONS SEE DWG NO. 128783-01-000

FOR ELECTRICAL CALLOUTS SEE DWG NO. 121339-01-000

68R TV - FRONT
265 CODES/STANDARDS-CSA/CMVSS
1B1 CODES/STANDARDS USA

DESCRIPTION:		
1B1 265 68R		
WIRING INSTL-TV/DVD		
SHEET:	ITEM/PART NO:	REV
2 OF 5	000209777 / 30204401000	



SEAL
154585-08-CHT
(940 MM)
(TRIM AROUND FEET
& DO NOT COVER VENT)

TV-43",FLAT
PANEL LED,HDTV
195158-01-000
BRACKET-TV,
43" SAMSUNG
302279-01-CHT
BOLT
OMC31K-08-025 (4)
WASHER-STAR
156569-01-CHT (4)
SCREW
G39-08-12U (4)

DETAIL CC

SPEAKER-SOUNDBAR W/SUB
195118-01-000
BRACKET-SOUNDBAR,SAMSUNG HW-J450
000008625 / 310881-01-CHT
SCREW
G11-08-12U (4)
SCREW
OMG02U-04-010 (2)

MATRIX-HDMI,BALUN
180504-07-000
BRACKET
180543-08-CHT
SCREW
G11-08-12U (2)

LEVEL BAR &
ATTACH TO
BATHWALL HERE

BRACKET-TV,
43" SAMSUNG
302280-01-CHT
SCREW
G11-08-12U (12)

REST SOUNDBAR
ON CABINET LIP

DETAIL CC

VIEW CA
(TV NOT SHOWN)

CABLE-HDMI
165308-03-000

CAT 6 CABLES
FROM WIRE
ASM-A/V

BRN-2
(POSITION 2)
BRN
(POSITION 1)

180504-02
HDMI 4X4

IR CABLE TO
RECEIVER

CONNECTOR-OPTICAL,
RIGHT ANGLE
187036-01-000

CABLE-OPTICAL AUDIO
187116-01-000

195158-01
43" SAMSUNG

DIGITAL
AUDIO OUT
(OPTICAL)

COMPONENT IN
R AUDIO L P_r P_b Y/VIDEO

ANT IN

CONNECTOR-F,90
RIGHT ANGLE
176986-01-000

CABLE ASM-COAX
(BRN)
FROM WIRE ASM-A/V
TO SPLITTER
SEE SHEET 5

FOR ELECTRICAL
TORQUE
SPECIFICATIONS
SEE DWG NO.
128783-01-000

FOR ELECTRICAL
CALLOUTS
SEE DWG NO.
121339-01-000

265 CODES/STANDARDS-CSA/CMVSS

1B1 CODES/STANDARDS USA

1B1 265

DESCRIPTION:

WIRING INSTL-TV/DVD

SHEET:

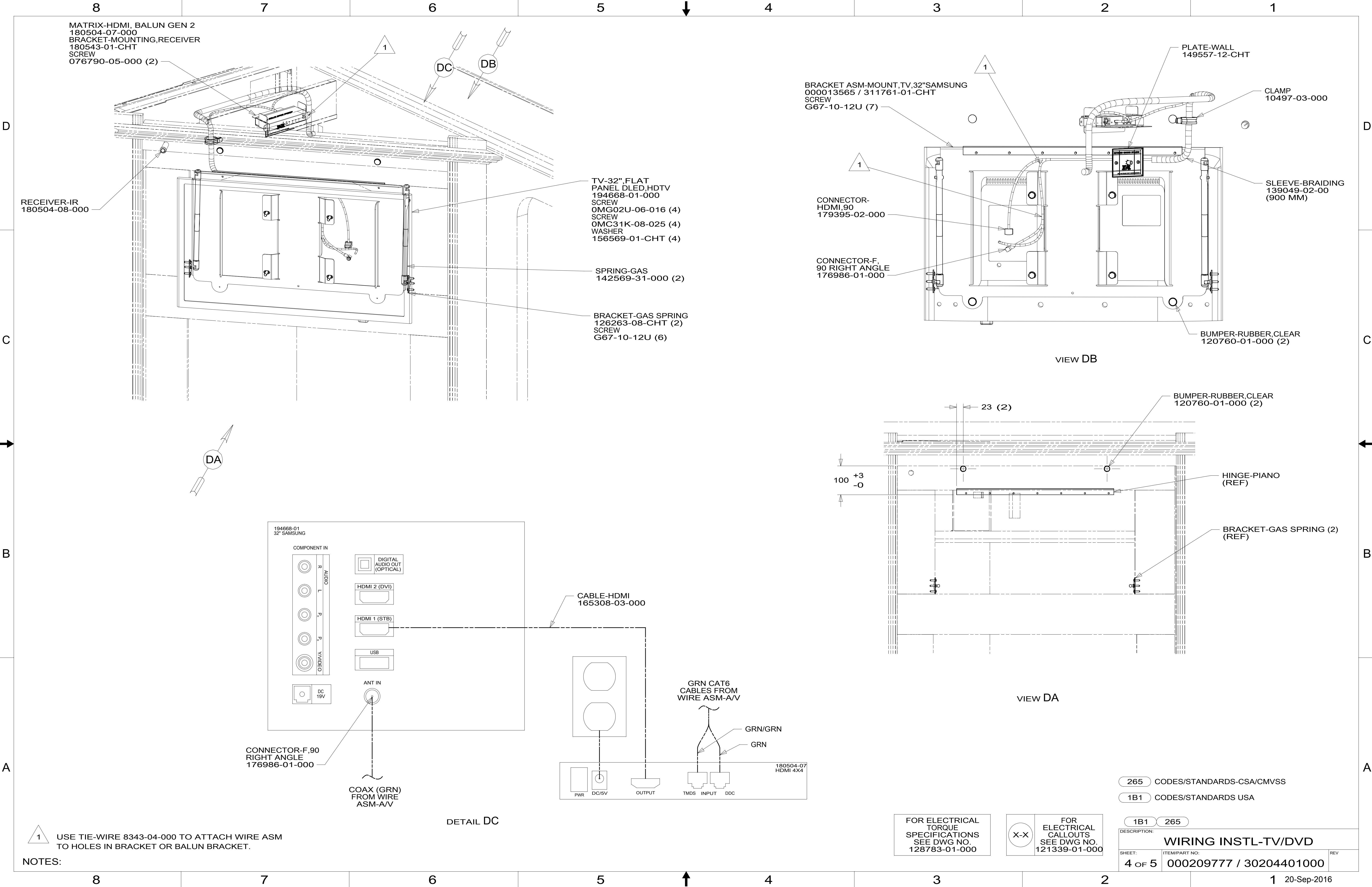
3 OF 5

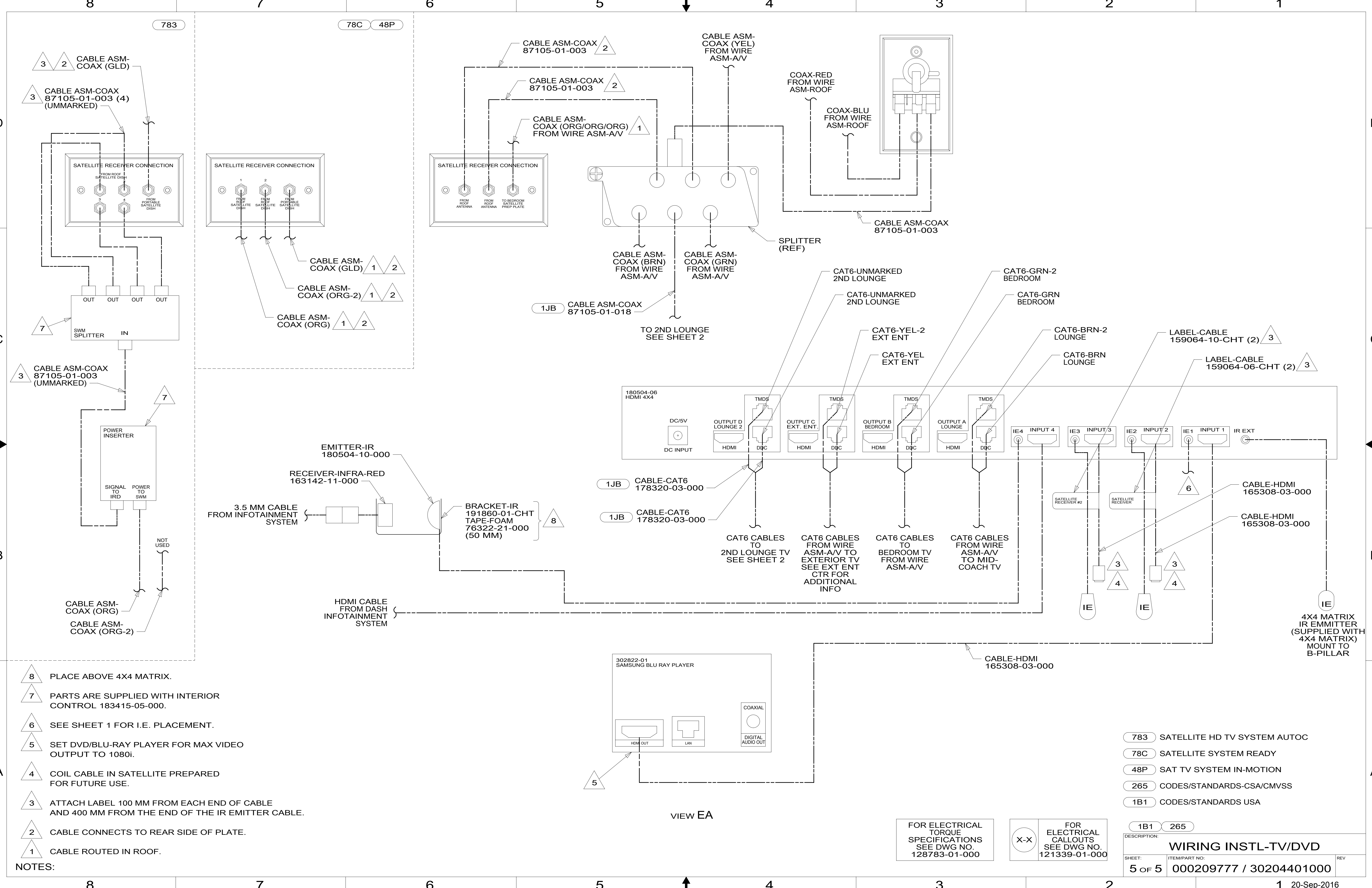
ITEM/PART NO:

000209777 / 30204401000

REV

1 20-Sep-2016





- NOTES:
- 8 PLACE ABOVE 4X4 MATRIX.
 - 7 PARTS ARE SUPPLIED WITH INTERIOR CONTROL 183415-05-000.
 - 6 SEE SHEET 1 FOR I.E. PLACEMENT.
 - 5 SET DVD/BLU-RAY PLAYER FOR MAX VIDEO OUTPUT TO 1080i.
 - 4 COIL CABLE IN SATELLITE PREPARED FOR FUTURE USE.
 - 3 ATTACH LABEL 100 MM FROM EACH END OF CABLE AND 400 MM FROM THE END OF THE IR EMITTER CABLE.
 - 2 CABLE CONNECTS TO REAR SIDE OF PLATE.
 - 1 CABLE ROUTED IN ROOF.

FOR ELECTRICAL TORQUE SPECIFICATIONS SEE DWG NO. 128783-01-000

X-X

FOR ELECTRICAL CALLOUTS SEE DWG NO. 121339-01-000

- 783 SATELLITE HD TV SYSTEM AUTOC
- 78C SATELLITE SYSTEM READY
- 48P SAT TV SYSTEM IN-MOTION
- 265 CODES/STANDARDS-CSA/CMVSS
- 1B1 CODES/STANDARDS USA

DESCRIPTION:		
1B1 265		
WIRING INSTL-TV/DVD		
SHEET:	ITEM/PART NO:	REV
5 OF 5	000209777 / 30204401000	