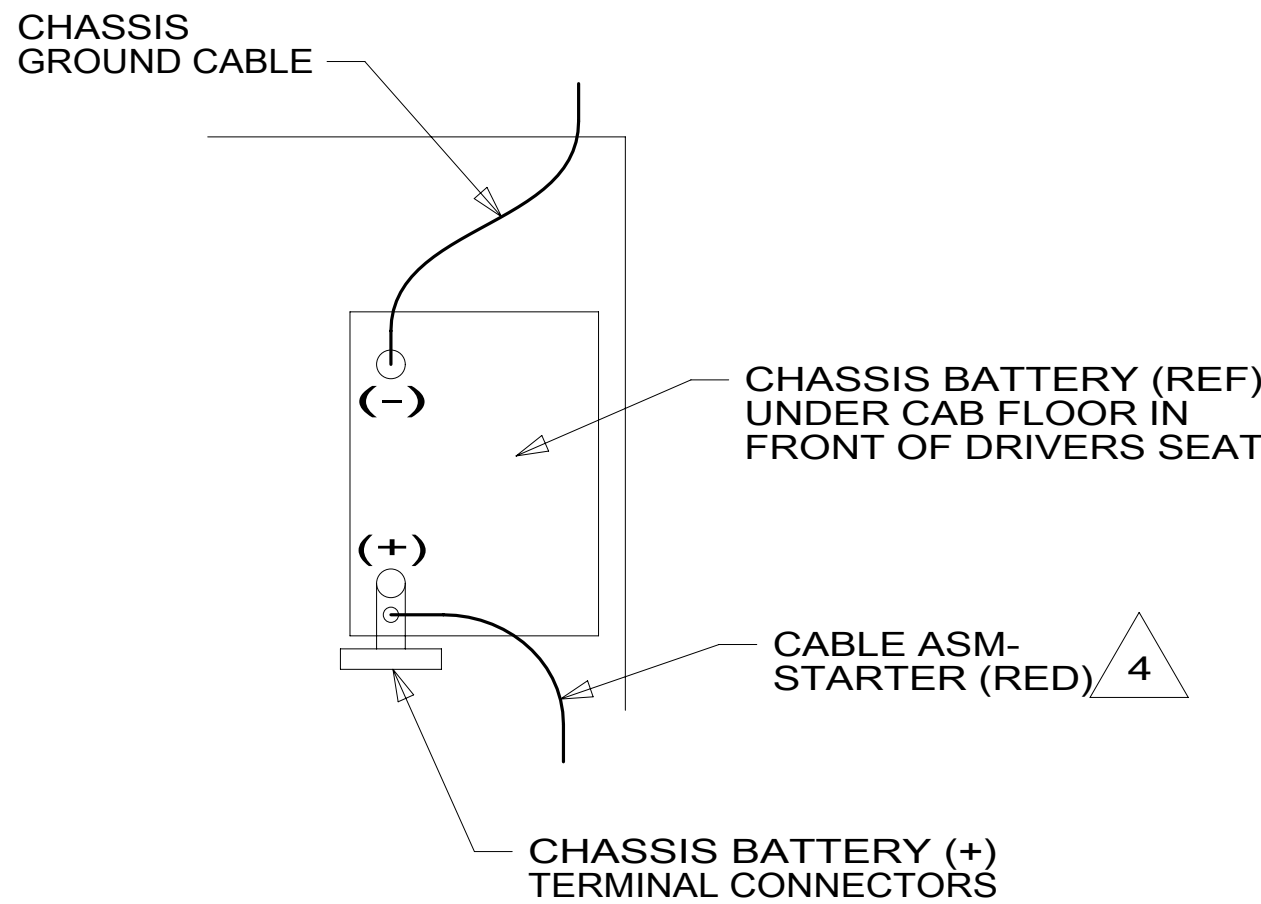


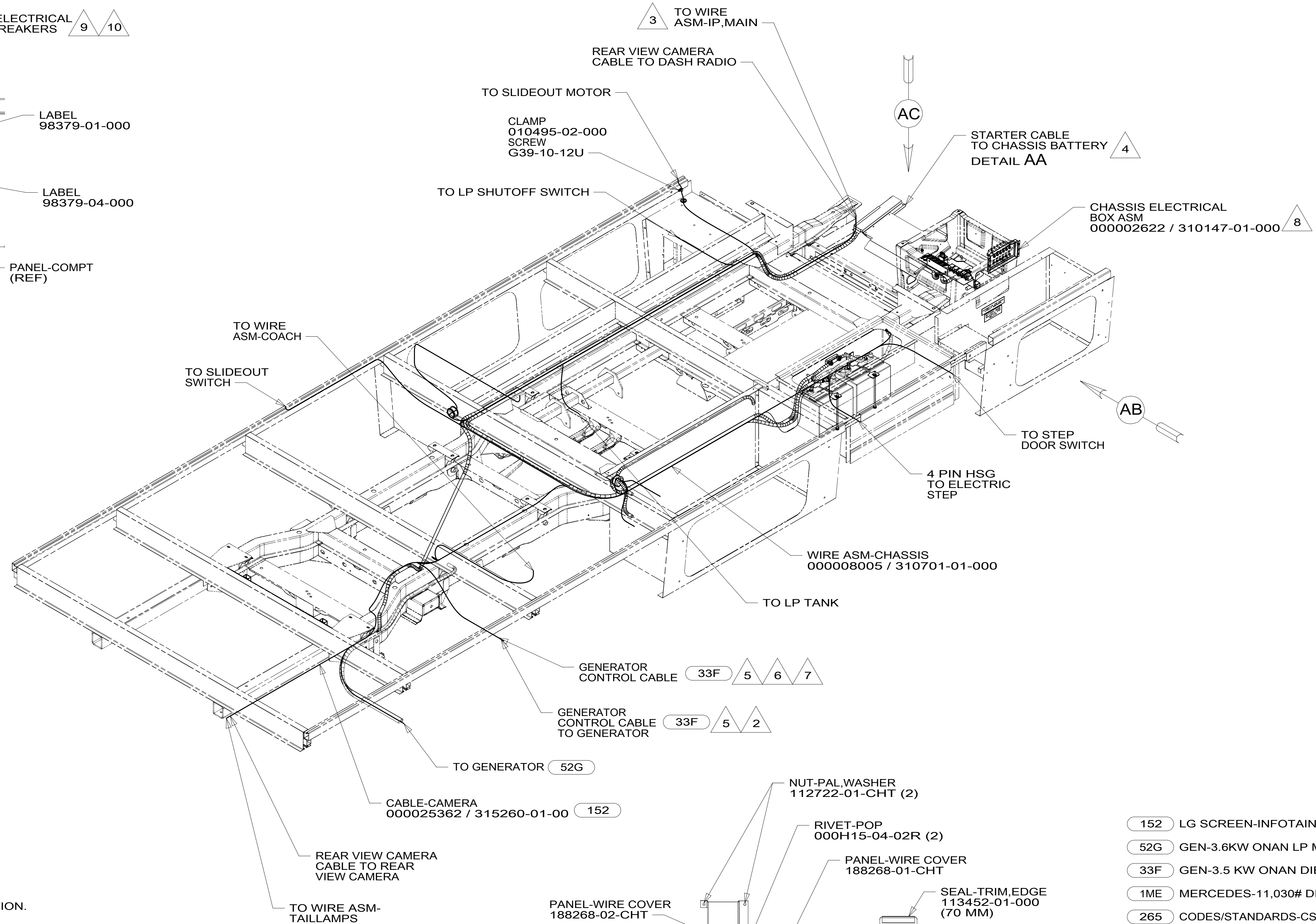
VIEW AB



DETAIL AA

- 10 REMOVE AND DISCARD SUPPLIED PLASTIC COVER INSTALLED ON PASSENGER SEAT PEDESTAL
 - 9 SEE CHASSIS ELECTRICAL BOX ASM FOR ADDITIONAL INFORMATION.
 - 8 LOCATED BELOW PASSENGER SEAT.
 - 7 12 PIN HOUSING TO BE ROUTED ABOVE FLOOR TO CONTROL PANEL.
 - 6 ROUTE GENERATOR CONTROL CABLE ALONG WIRE ASM-CHASSIS THROUGH FLOOR IN THIS AREA.
 - 5 CABLE SUPPLIED WITH DIESEL GENERATOR.
 - 4 SEE BATTERY INSTL FOR ADDITIONAL INFORMATION.
 - 3 CUT WIRE TIE AROUND SPRINTER SEAL, ROUTE THE CHASSIS WIRING THROUGH HOLE AND WIRE TIE SEAL WITH WIRE TIE 8343-04-000.
 - 2 10 PIN HOUSING CONNECTS TO GENERATOR
1. SECURE CONDUIT 41953, TAB AS REQUIRED, OVER ALL WIRES IN CONTACT WITH SHARP EDGES.

NOTES:



VIEW AC

FOR ELECTRICAL TORQUE SPECIFICATIONS SEE DWG NO. 128783-01-000

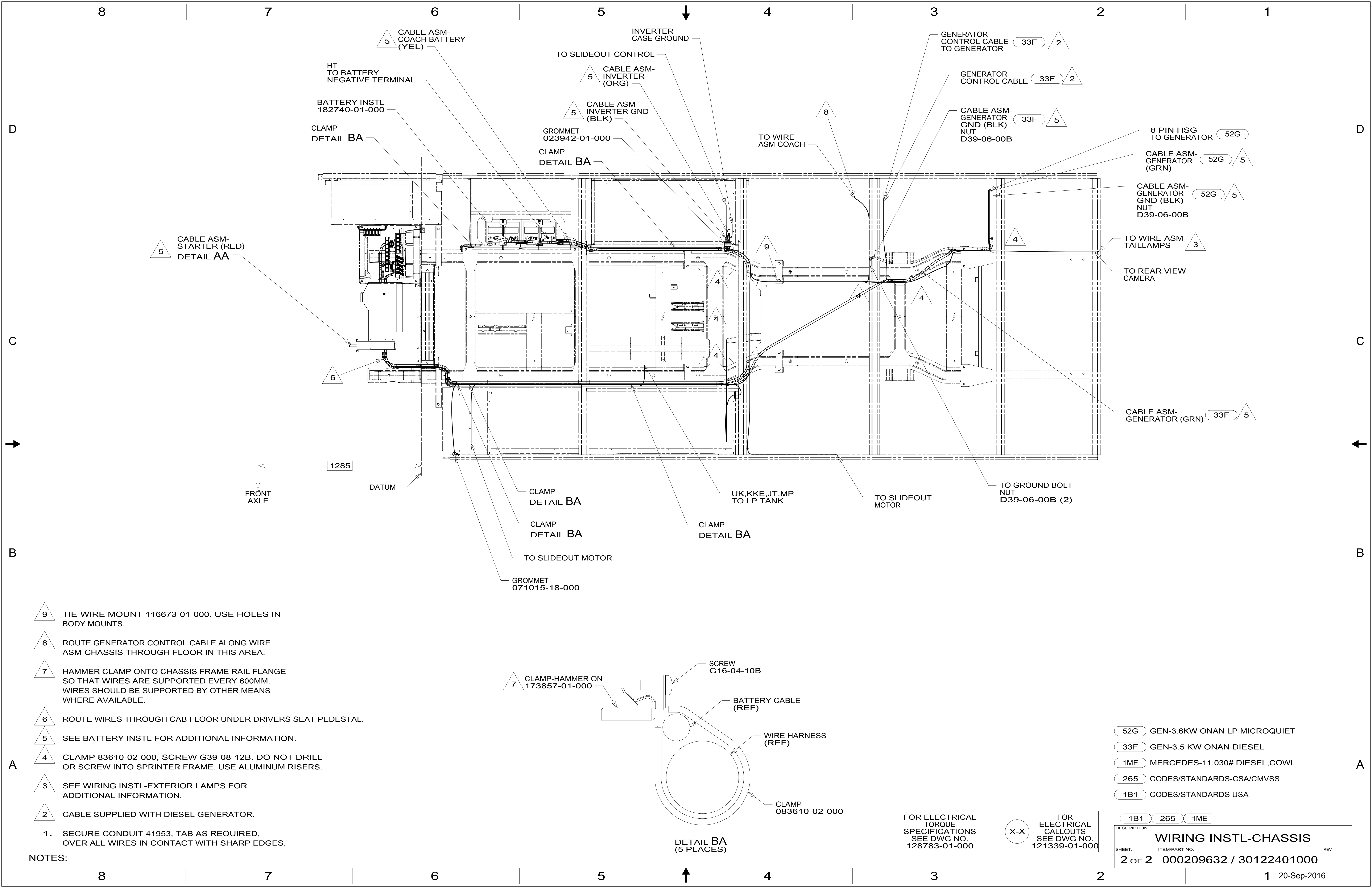
FOR ELECTRICAL CALLOUTS SEE DWG NO. 121339-01-000

- 152 LG SCREEN-INFOTAIN CTR/GPS
- 52G GEN-3.6KW ONAN LP MICROQUIET
- 33F GEN-3.5 KW ONAN DIESEL
- 1ME MERCEDES-11,030# DIESEL,COWL
- 265 CODES/STANDARDS-CSA/CMVSS
- 1B1 CODES/STANDARDS USA

1B1 265 1ME

WINNEBAGO
COPYRIGHT 2016 WINNEBAGO INDUSTRIES, INC.

DSNR:	ALL DIMENSIONS ARE IN MILLIMETERS
DFFR:	
UNSPECIFIED TOLERANCES:	MATERIAL:
WHOLE DIM (X) : 3	
ONE-PLACE (X.X) : 1.5	
TWO-PLACE (X.XX) : 0.50	
ANGLE : 1°	
REFER TO ES0018 FOR FASTENER TIGHTENING GUIDELINES	WEIGHT: (LBS) FIRST USED: 16 H25P
DESCRIPTION: WIRING INSTL-CHASSIS	
SHEET: 1 OF 2	ITEM/PART NO: 000209632 / 30122401000



5 CABLE ASM-STARTER (RED) DETAIL AA

BATTERY INSTL 182740-01-000
CLAMP DETAIL BA

6

FRONT AXLE

1285

DATUM

CLAMP DETAIL BA

CLAMP DETAIL BA

TO SLIDEOUT MOTOR

GROMMET 071015-18-000

TO SLIDEOUT CONTROL

5 CABLE ASM-INVERTER (ORG)

5 CABLE ASM-INVERTER GND (BLK)

GROMMET 023942-01-000

CLAMP DETAIL BA

INVERTER CASE GROUND

TO WIRE ASM-COACH

8

GENERATOR CONTROL CABLE TO GENERATOR

33F 2

GENERATOR CONTROL CABLE

33F 2

CABLE ASM-GENERATOR GND (BLK) NUT D39-06-00B

33F 5

8 PIN HSG TO GENERATOR

52G

CABLE ASM-GENERATOR (GRN)

52G 5

CABLE ASM-GENERATOR GND (BLK) NUT D39-06-00B

52G 5

TO WIRE ASM-TAILLAMPS

3

TO REAR VIEW CAMERA

CABLE ASM-GENERATOR (GRN)

33F 5

TO GROUND BOLT NUT D39-06-00B (2)

TO SLIDEOUT MOTOR

UK,KKE,JT,MP TO LP TANK

CLAMP DETAIL BA

9 TIE-WIRE MOUNT 116673-01-000. USE HOLES IN BODY MOUNTS.

8 ROUTE GENERATOR CONTROL CABLE ALONG WIRE ASM-CHASSIS THROUGH FLOOR IN THIS AREA.

7 HAMMER CLAMP ONTO CHASSIS FRAME RAIL FLANGE SO THAT WIRES ARE SUPPORTED EVERY 600MM. WIRES SHOULD BE SUPPORTED BY OTHER MEANS WHERE AVAILABLE.

6 ROUTE WIRES THROUGH CAB FLOOR UNDER DRIVERS SEAT PEDESTAL.

5 SEE BATTERY INSTL FOR ADDITIONAL INFORMATION.

4 CLAMP 83610-02-000, SCREW G39-08-12B. DO NOT DRILL OR SCREW INTO SPRINTER FRAME. USE ALUMINUM RISERS.

3 SEE WIRING INSTL-EXTERIOR LAMPS FOR ADDITIONAL INFORMATION.

2 CABLE SUPPLIED WITH DIESEL GENERATOR.

1. SECURE CONDUIT 41953, TAB AS REQUIRED, OVER ALL WIRES IN CONTACT WITH SHARP EDGES.

7 CLAMP-HAMMER ON 173857-01-000

SCREW G16-04-10B

BATTERY CABLE (REF)

WIRE HARNESS (REF)

CLAMP 083610-02-000

DETAIL BA (5 PLACES)

FOR ELECTRICAL TORQUE SPECIFICATIONS SEE DWG NO. 128783-01-000

FOR ELECTRICAL CALLOUTS SEE DWG NO. 121339-01-000

- 52G GEN-3.6KW ONAN LP MICROQUIET
- 33F GEN-3.5 KW ONAN DIESEL
- 1ME MERCEDES-11,030# DIESEL,COWL
- 265 CODES/STANDARDS-CSA/CMVSS
- 1B1 CODES/STANDARDS USA

DESCRIPTION:	WIRING INSTL-CHASSIS	
SHEET:	ITEM/PART NO:	REV
2 OF 2	000209632 / 30122401000	