

8 7 6 5 4 3 2 1

D

D

C

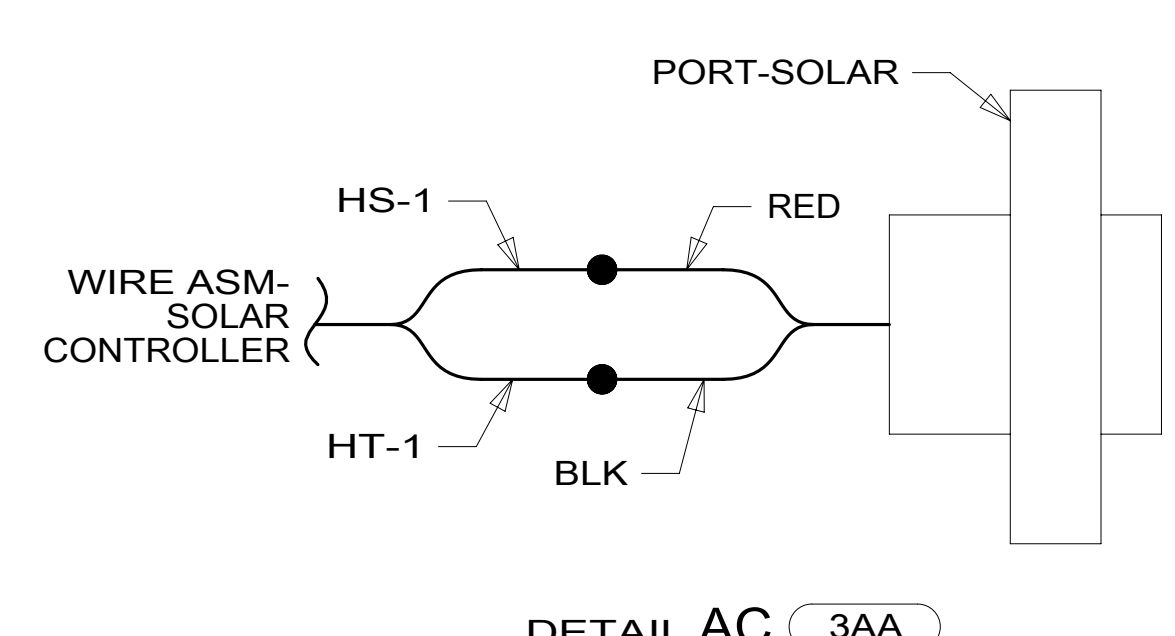
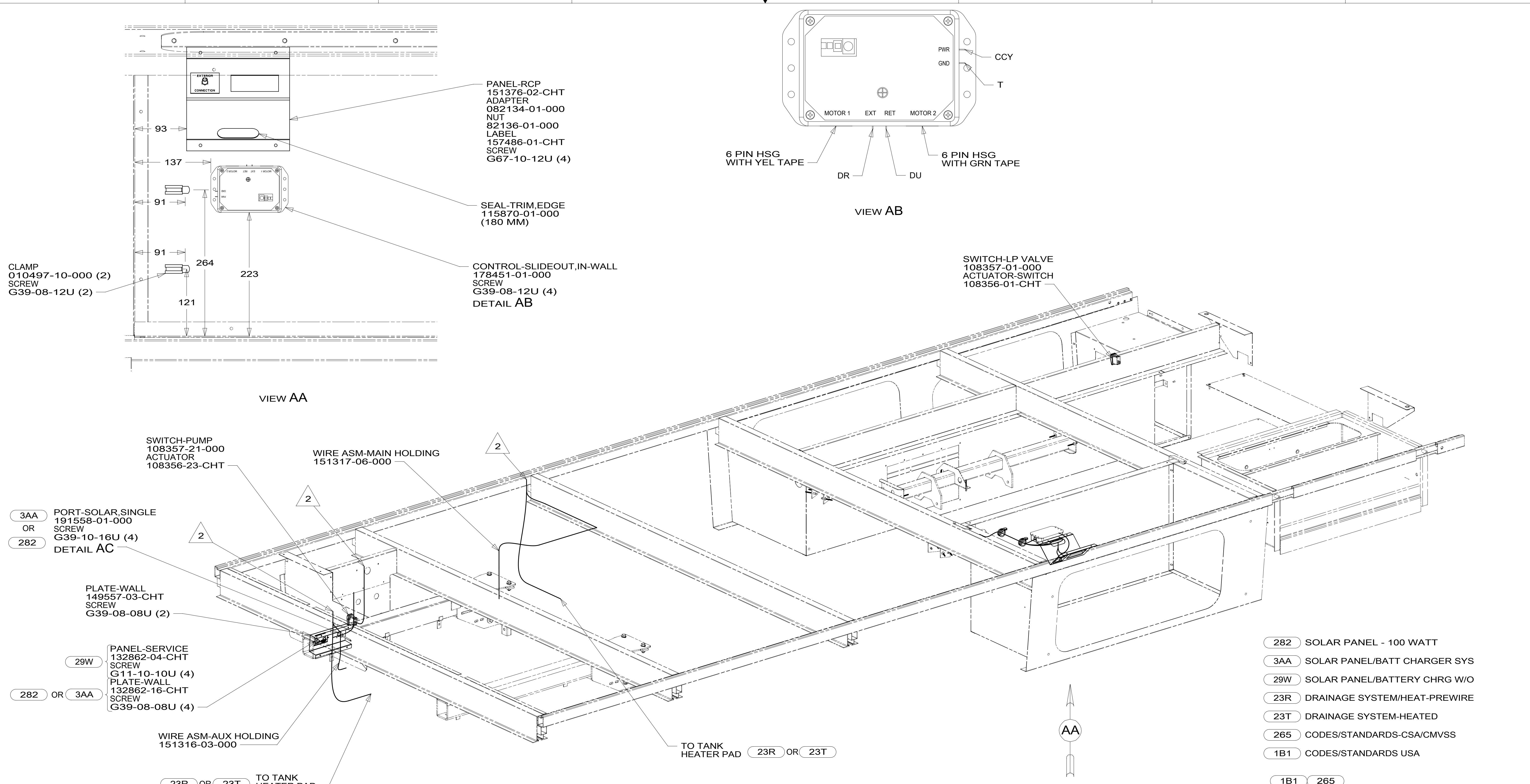
C

B

B

A

A



- NOTES:
- 2 WIRE ROUTED THROUGH FLOOR IN THIS AREA.
  - 1. ROUTE TANK SENSOR WIRES SO THEY DO NOT PASS OVER SENSORS. USE WIRE TIE MOUNT 155366-01-000 AS NEEDED. TANK SURFACE MUST BE CLEANED USING ISOPROPYL ALCOHOL AND PRIME WITH PRIMER 94.

FOR ELECTRICAL TORQUE SPECIFICATIONS SEE DWG NO. 128783-01-000

FOR ELECTRICAL CALLOUTS SEE DWG NO. 121339-01-000

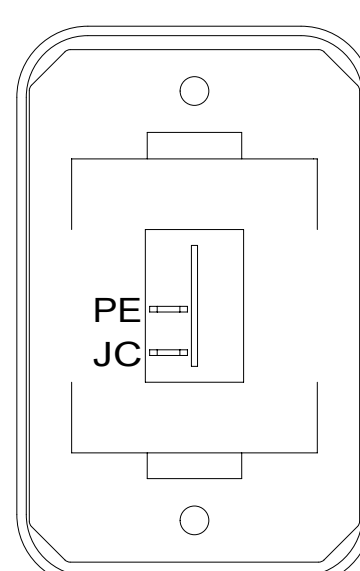
- 282 SOLAR PANEL - 100 WATT
- 3AA SOLAR PANEL/BATT CHARGER SYS
- 29W SOLAR PANEL/BATTERY CHRGR W/O
- 23R DRAINAGE SYSTEM/HEAT-PREWIRE
- 23T DRAINAGE SYSTEM-HEATED
- 265 CODES/STANDARDS-CSA/CMVSS
- 1B1 CODES/STANDARDS USA

**WINNEBAGO**  
COPYRIGHT 2016 WINNEBAGO INDUSTRIES, INC.

DSNR:	ALL DIMENSIONS ARE IN MILLIMETERS
DFFR:	MATERIAL:
UNSPECIFIED TOLERANCES:	WEIGHT: (LBS)
WHOLE DIM (X) : 3	FIRST USED: 16 H25P
ONE-PLACE (X.X) : 1.5	
TWO-PLACE (X.XX) : 0.50	
ANGLE : 1°	
REFER TO ES0018 FOR FASTENER TIGHTENING GUIDELINES	
DESCRIPTION: <b>WIRING INSTL-BODY, 12V</b>	
SHEET: 1 OF 7	ITEM/PART NO: 000209631 / 30122301000
REF:	REV:

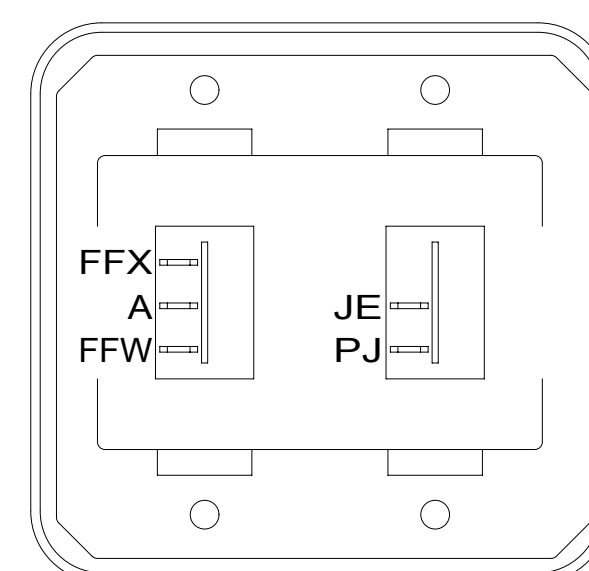
8 7 6 5 4 3 2 1





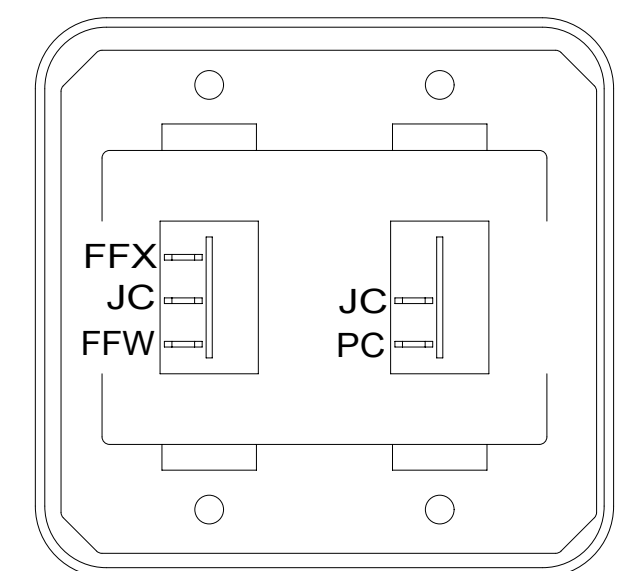
SWITCH-ROCKER  
135740-01-CHT  
SWITCH-BASE  
135741-01-CHT  
SWITCH-BEZEL  
135742-01-CHT  
SCREW  
G11-08-08U (2)

DETAIL DA



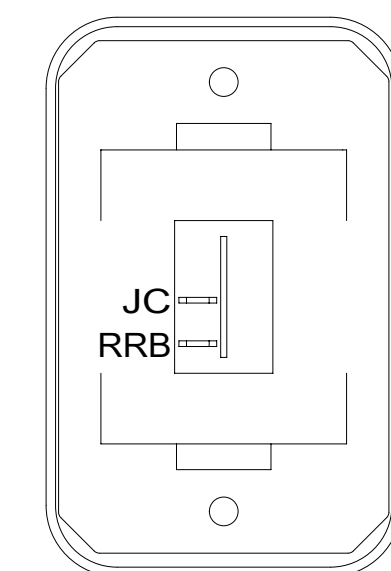
SWITCH-ROCKER  
135740-01-CHT  
135740-02-CHT  
SWITCH-BASE  
135741-02-CHT  
SWITCH-BEZEL  
135742-02-CHT  
SCREW  
G11-08-08U (4)

DETAIL DE



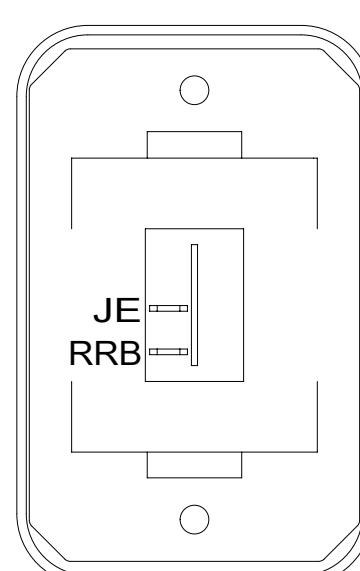
SWITCH-ROCKER  
135740-01-CHT  
135740-02-CHT  
SWITCH-BASE  
135741-02-CHT  
SWITCH-BEZEL  
135742-02-CHT  
SCREW  
G11-08-08U (4)

DETAIL DB



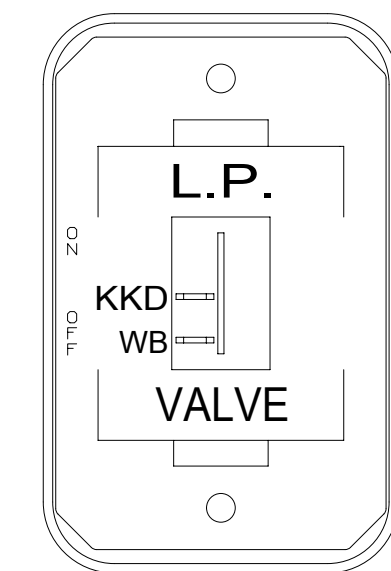
SWITCH-ROCKER  
135740-01-CHT  
SWITCH-BASE  
135741-01-CHT  
SWITCH-BEZEL  
135742-01-CHT  
SCREW  
G11-08-08U (2)

DETAIL DF



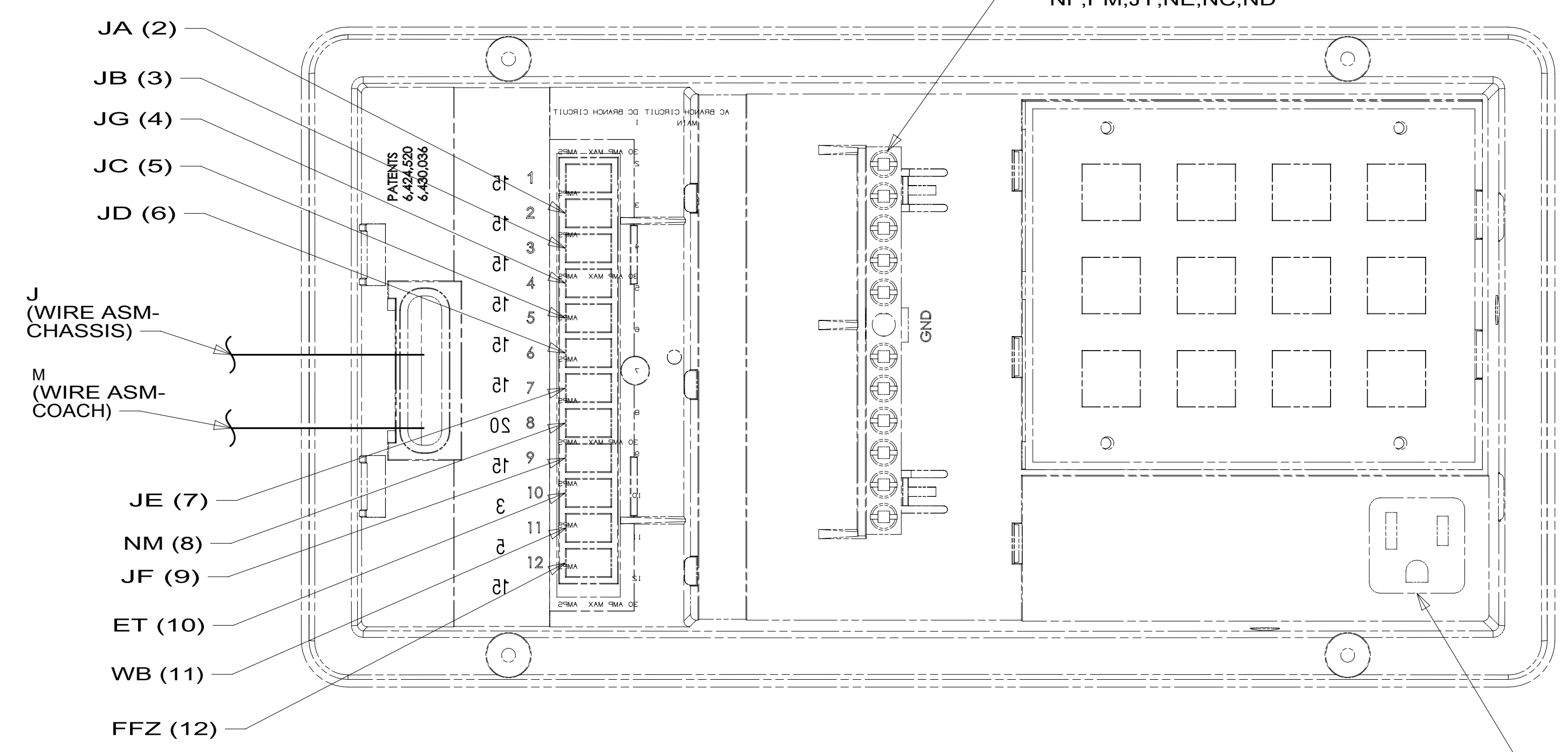
SWITCH-ROCKER  
135740-01-CHT  
SWITCH-BASE  
135741-01-CHT  
SWITCH-BEZEL  
135742-01-CHT  
SCREW  
G11-08-08U (2)

DETAIL DC



SWITCH-ROCKER  
135740-01-CHT  
SWITCH-BASE  
135741-01-CHT  
SWITCH-BEZEL  
135742-59-CHT  
SCREW  
G11-08-08U (2)

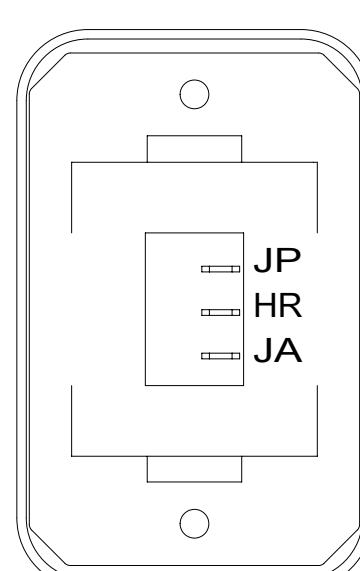
DETAIL DG



VIEW DM

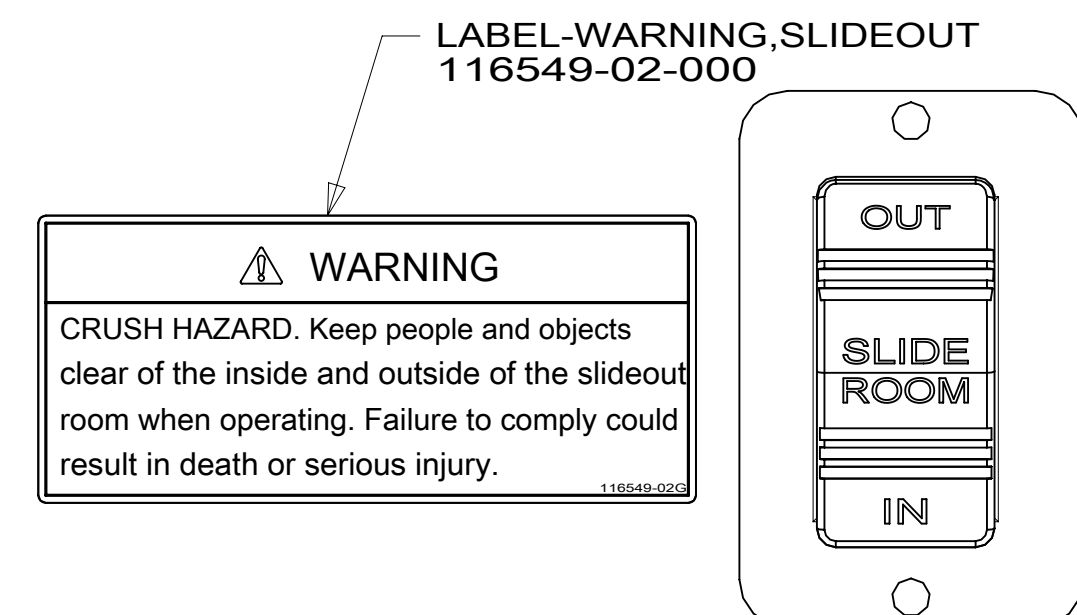
GROUNDS  
JX,EU,UK,FFE,JP,JM,  
NF,PM,JY,NE,NC,ND

PLUG  
CONVERTER  
INTO OUTLET



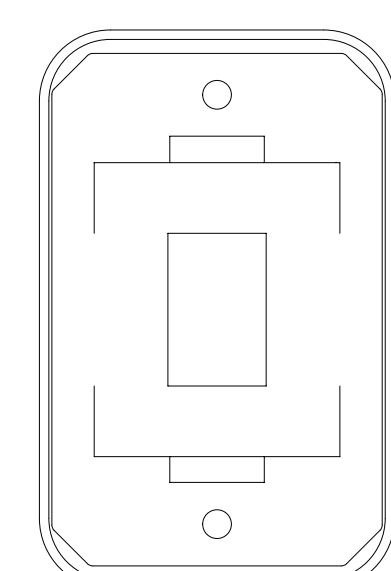
SWITCH-ROCKER  
135740-06-CHT  
SWITCH-BASE  
135741-01-CHT  
SWITCH-BEZEL  
135742-01-CHT  
SCREW  
G11-08-08U (2)  
LABEL-SWITCH  
134563-01-CHT

DETAIL DD



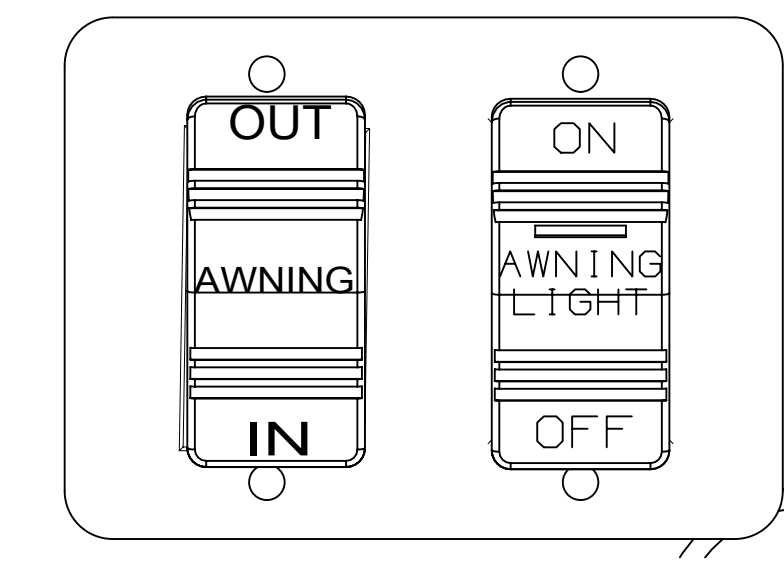
DETAIL DH

PLATE  
144363-02-CHT  
SWITCH  
108357-06-000  
ACTUATOR  
108356-24-CHT  
SCREW  
G11-08-10U (2)  
RELAY  
063912-02-000



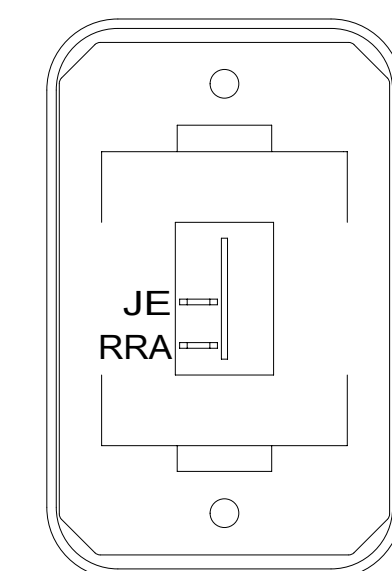
DETAIL DJ

SWITCH-BLANK  
138253-01-CHT  
SWITCH-BASE  
135741-01-CHT  
SWITCH-BEZEL  
135742-01-CHT  
SCREW  
G11-08-08U (2)



DETAIL DP 52N

SWITCH-AWNING  
108357-06-000  
ACTUATOR-AWNING  
108356-12-CHT  
SWITCH-AWNING LIGHT  
108357-14-000  
ACTUATOR  
108356-28-CHT  
PLATE  
158431-17-CHT  
SCREW  
G11-06-10U (4)

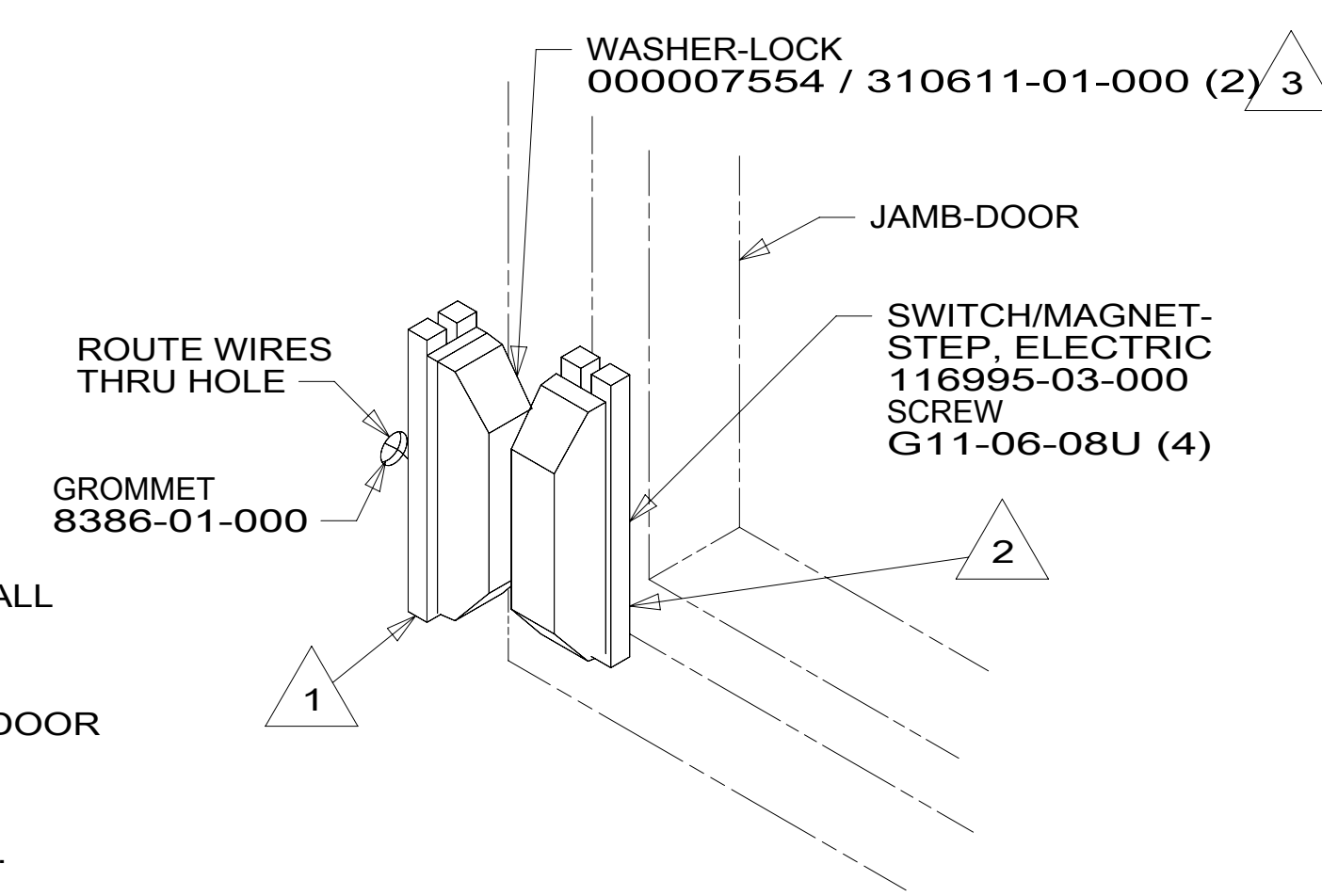


DETAIL DR

SWITCH-ROCKER  
135740-01-CHT  
SWITCH-BASE  
135741-01-CHT  
SWITCH-BEZEL  
135742-01-CHT  
SCREW  
G11-08-08U (2)

HOLDING TANK HEATER  
TURN OFF When Not In Use  
SEE OPERATORS MANUAL

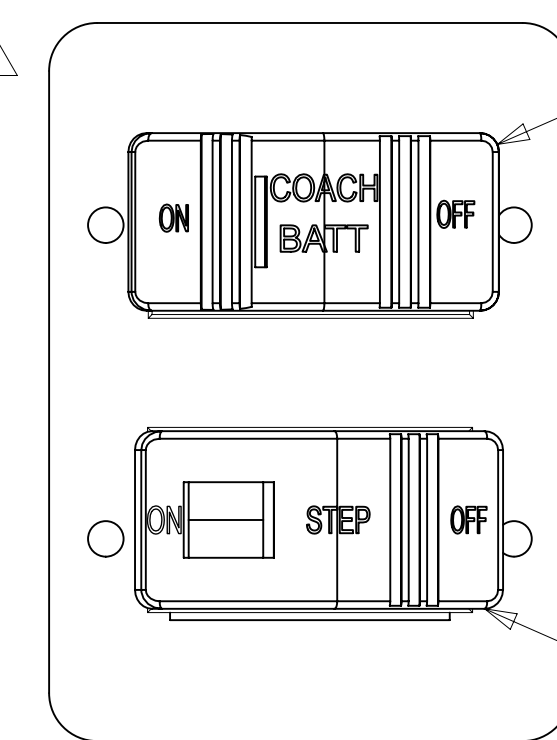
DETAIL DD



DETAIL DN

WASHER-LOCK  
00007554 / 310611-01-000 (2) 3

JAMB-DOOR  
SWITCH/MAGNET-STEP, ELECTRIC  
116995-03-000  
SCREW  
G11-06-08U (4)

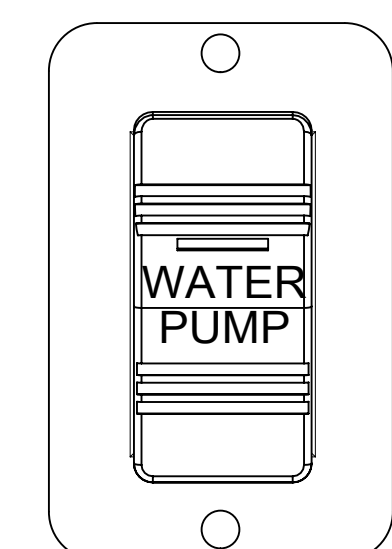


DETAIL DL

SWITCH-BATT DISC  
108357-18-000  
ACTUATOR-BATT DISC  
108356-19-CHT  
WIRE ASM-THERMISTOR  
186796-01-000

PLATE-SWITCH  
158431-17-CHT  
SCREW  
G11-06-10U (4)

SWITCH-STEP  
108357-19-000



DETAIL DK

SWITCH-WATER PUMP  
108357-21-000  
ACTUATOR  
108356-23-CHT  
PLATE  
144363-02-CHT  
SCREW  
G11-06-10U (2)

- NOTES:
- 3 REMOVE SCREWS FROM MAGNET SWITCH TO INSTALL LOCK WASHER AND RING TERMINALS.
  - 2 MOUNT MAGNET USING PILOT HOLES IN SCREEN DOOR FRAME. MOUNT WITH MAGNET TOWARD SWITCH.
  - 1 MOUNT SWITCH AND SPACER TO BLOCK ON JAMB. ADJUST HEIGHT TO MATCH MAGNET.

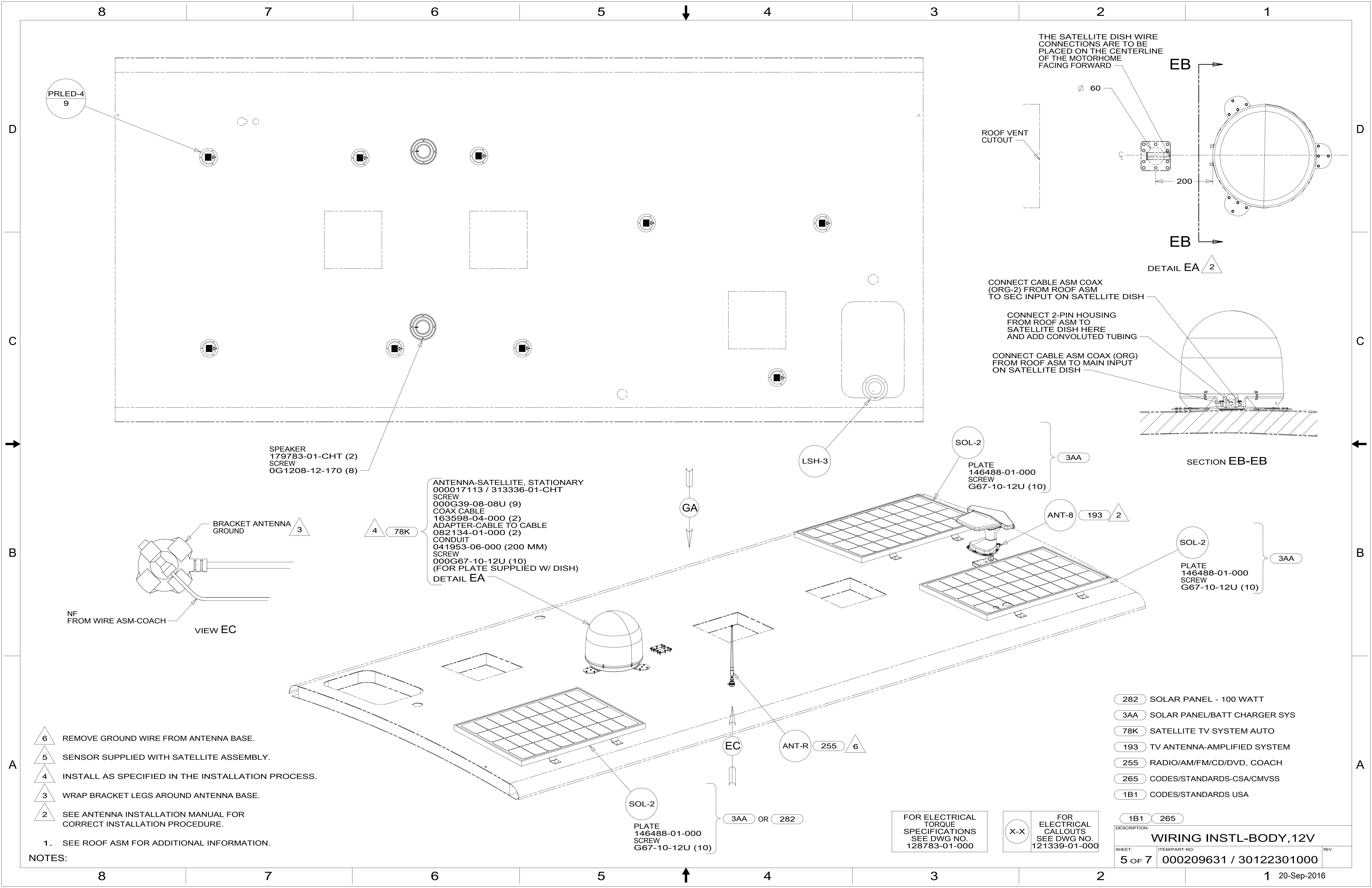
FOR ELECTRICAL TORQUE SPECIFICATIONS SEE DWG NO. 128783-01-000

FOR ELECTRICAL CALLOUTS SEE DWG NO. 121339-01-000

- 23R DRAINAGE SYSTEM/HEAT-PREWIRE
- 52N AWNING - PATIO, ELECTRIC
- 23T DRAINAGE SYSTEM-HEATED
- 1LK TV-20"DC,COLOR,LCD W/REMOTE
- 265 CODES/STANDARDS-CSA/CMVSS
- 1B1 CODES/STANDARDS USA

DESCRIPTION: <b>WIRING INSTL-BODY, 12V</b>	
SHEET: 4 OF 7	ITEM/PART NO: 000209631 / 30122301000
REV 20-Sep-2016	





THE SATELLITE DISH WIRE CONNECTIONS ARE TO BE PLACED ON THE CENTERLINE OF THE MOTORHOME FACING FORWARD

ROOF VENT CUTOUT

DETAIL EA 2

CONNECT CABLE ASM COAX (ORG-2) FROM ROOF ASM TO SEC INPUT ON SATELLITE DISH

CONNECT 2-PIN HOUSING FROM ROOF ASM TO SATELLITE DISH HERE AND ADD CONVOLUTED TUBING

CONNECT CABLE ASM COAX (ORG) FROM ROOF ASM TO MAIN INPUT ON SATELLITE DISH

SECTION EB-EB

SPEAKER  
179783-01-CHT (2)  
SCREW  
OG1208-12-170 (8)

ANTENNA-SATELLITE, STATIONARY  
000017113 / 313336-01-CHT  
SCREW  
000G39-08-08U (9)  
COAX CABLE  
163598-04-000 (2)  
ADAPTER-CABLE TO CABLE  
082134-01-000 (2)  
CONDUIT  
041953-06-000 (200 MM)  
SCREW  
000G67-10-12U (10)  
(FOR PLATE SUPPLIED W/ DISH)  
DETAIL EA

BRACKET ANTENNA  
GROUND

NF FROM WIRE ASM-COACH  
VIEW EC

- 6 REMOVE GROUND WIRE FROM ANTENNA BASE.
- 5 SENSOR SUPPLIED WITH SATELLITE ASSEMBLY.
- 4 INSTALL AS SPECIFIED IN THE INSTALLATION PROCESS.
- 3 WRAP BRACKET LEGS AROUND ANTENNA BASE.
- 2 SEE ANTENNA INSTALLATION MANUAL FOR CORRECT INSTALLATION PROCEDURE.

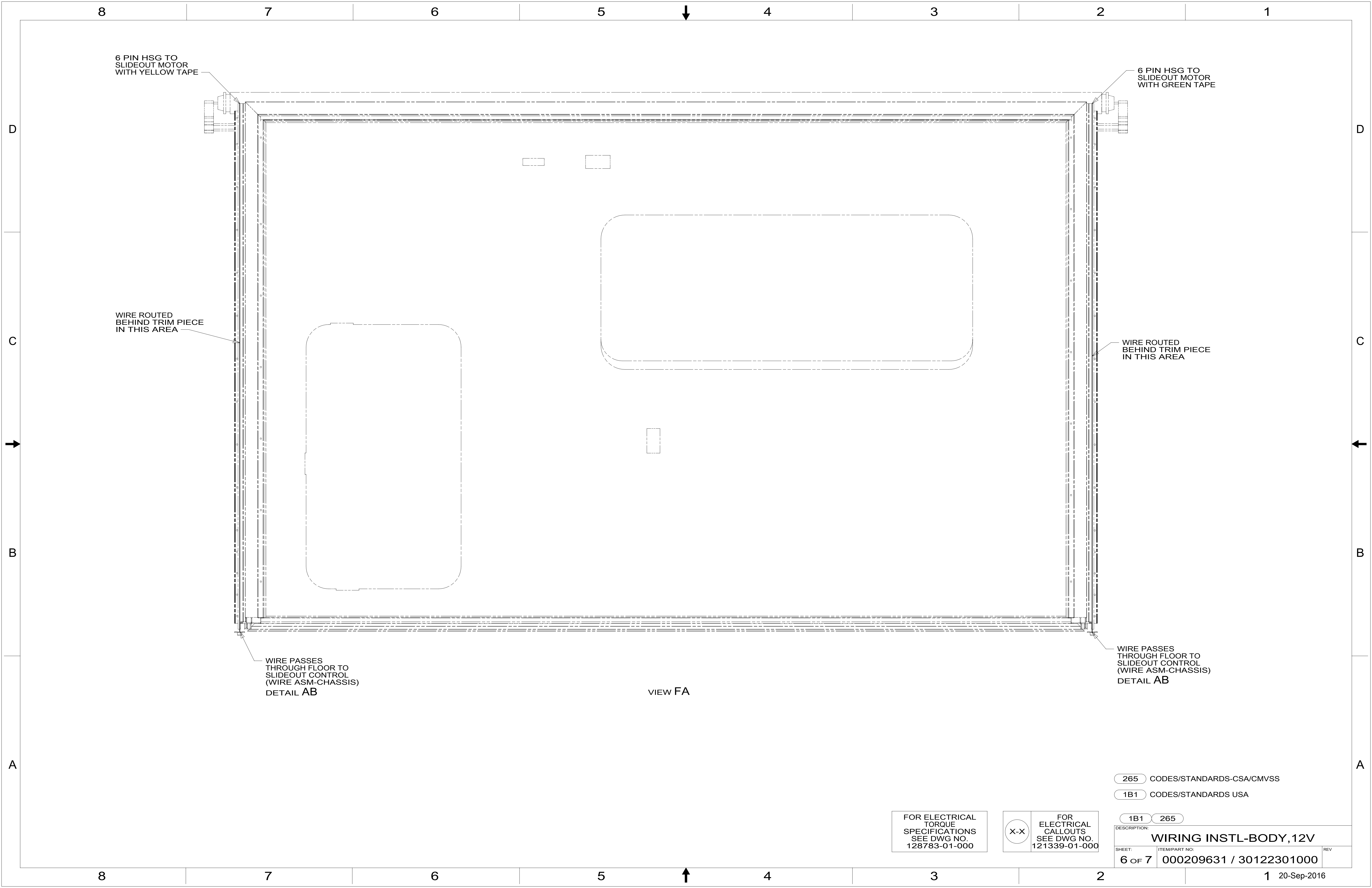
NOTES:  
1. SEE ROOF ASM FOR ADDITIONAL INFORMATION.

- 282 SOLAR PANEL - 100 WATT
- 3AA SOLAR PANEL/BATT CHARGER SYS
- 78K SATELLITE TV SYSTEM AUTO
- 193 TV ANTENNA-AMPLIFIED SYSTEM
- 255 RADIO/AM/FM/CD/DVD, COACH
- 265 CODES/STANDARDS-CSA/CMVSS
- 1B1 CODES/STANDARDS USA

FOR ELECTRICAL TORQUE SPECIFICATIONS SEE DWG NO. 128783-01-000

FOR ELECTRICAL CALLOUTS SEE DWG NO. 121339-01-000

DESCRIPTION: <b>WIRING INSTL-BODY, 12V</b>		
SHEET: 5 OF 7	ITEM/PART NO: 000209631 / 30122301000	REV



6 PIN HSG TO SLIDEOUT MOTOR WITH YELLOW TAPE

6 PIN HSG TO SLIDEOUT MOTOR WITH GREEN TAPE

WIRE ROUTED BEHIND TRIM PIECE IN THIS AREA

WIRE ROUTED BEHIND TRIM PIECE IN THIS AREA

WIRE PASSES THROUGH FLOOR TO SLIDEOUT CONTROL (WIRE ASM-CHASSIS) DETAIL AB

WIRE PASSES THROUGH FLOOR TO SLIDEOUT CONTROL (WIRE ASM-CHASSIS) DETAIL AB

VIEW FA

265 CODES/STANDARDS-CSA/CMVSS

1B1 CODES/STANDARDS USA

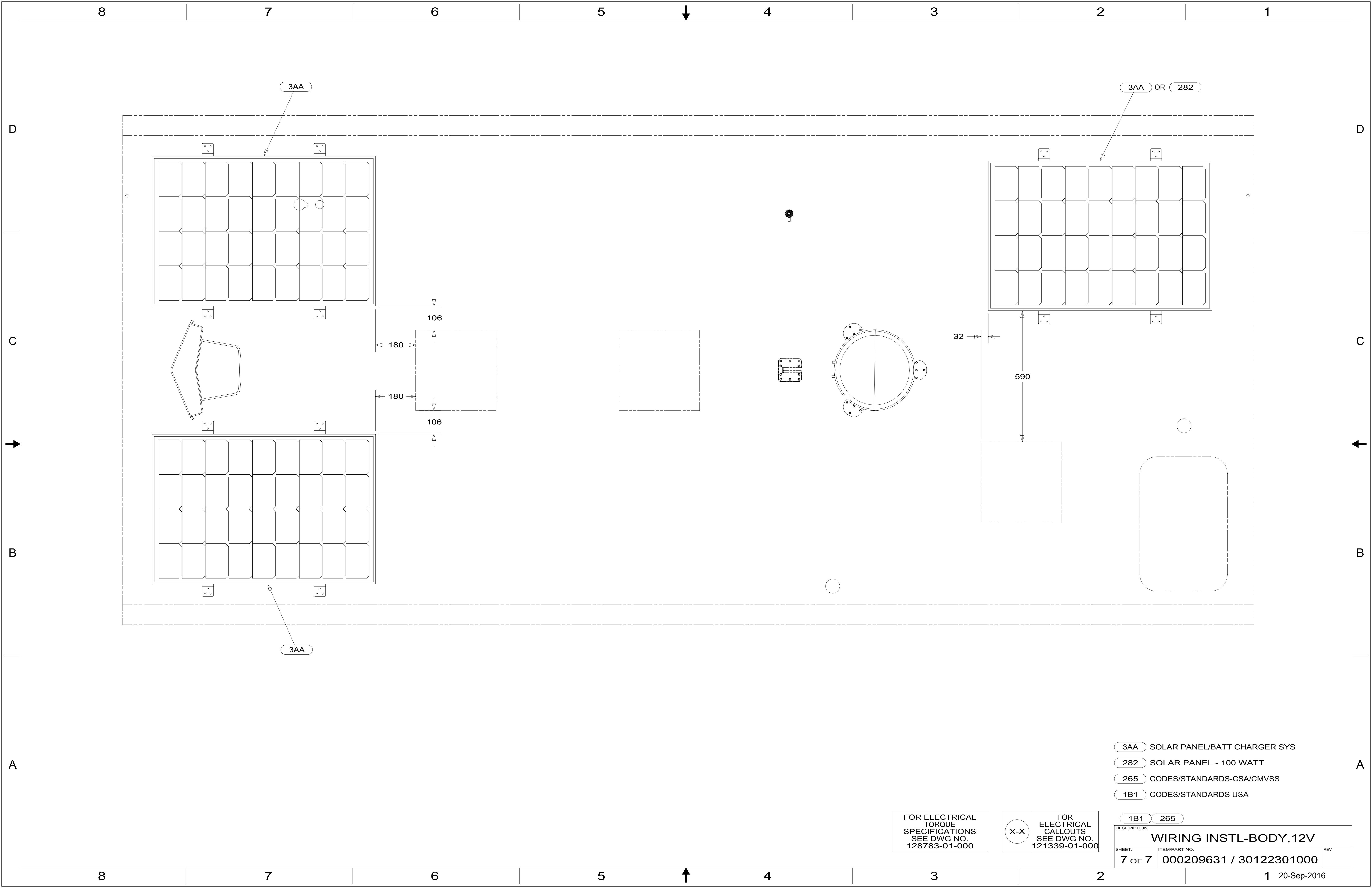
1B1 265

FOR ELECTRICAL TORQUE SPECIFICATIONS SEE DWG NO. 128783-01-000

FOR ELECTRICAL CALLOUTS SEE DWG NO. 121339-01-000

DESCRIPTION: WIRING INSTL-BODY, 12V

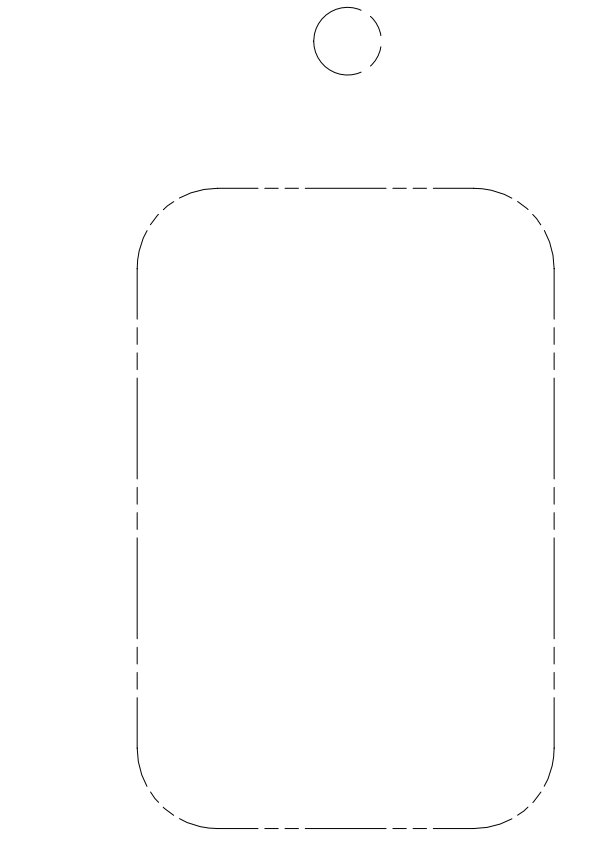
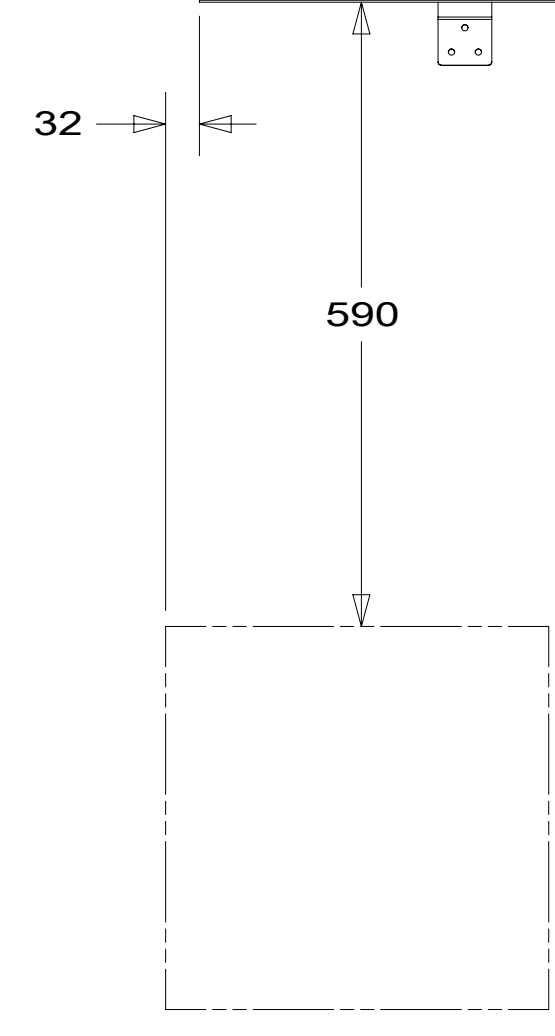
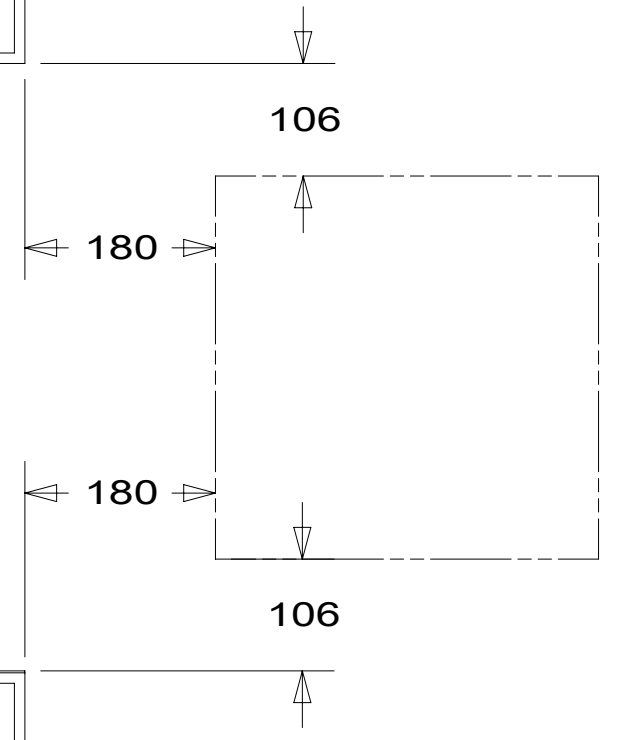
SHEET: 6 OF 7 ITEM/PART NO.: 000209631 / 30122301000 REV



3AA

3AA OR 282

3AA



- 3AA SOLAR PANEL/BATT CHARGER SYS
- 282 SOLAR PANEL - 100 WATT
- 265 CODES/STANDARDS-CSA/CMVSS
- 1B1 CODES/STANDARDS USA

FOR ELECTRICAL TORQUE SPECIFICATIONS SEE DWG NO. 128783-01-000

FOR ELECTRICAL CALLOUTS SEE DWG NO. 121339-01-000

DESCRIPTION:	
1B1 265	
WIRING INSTL-BODY, 12V	
SHEET:	ITEM/PART NO:
7 OF 7	000209631 / 30122301000
REV	