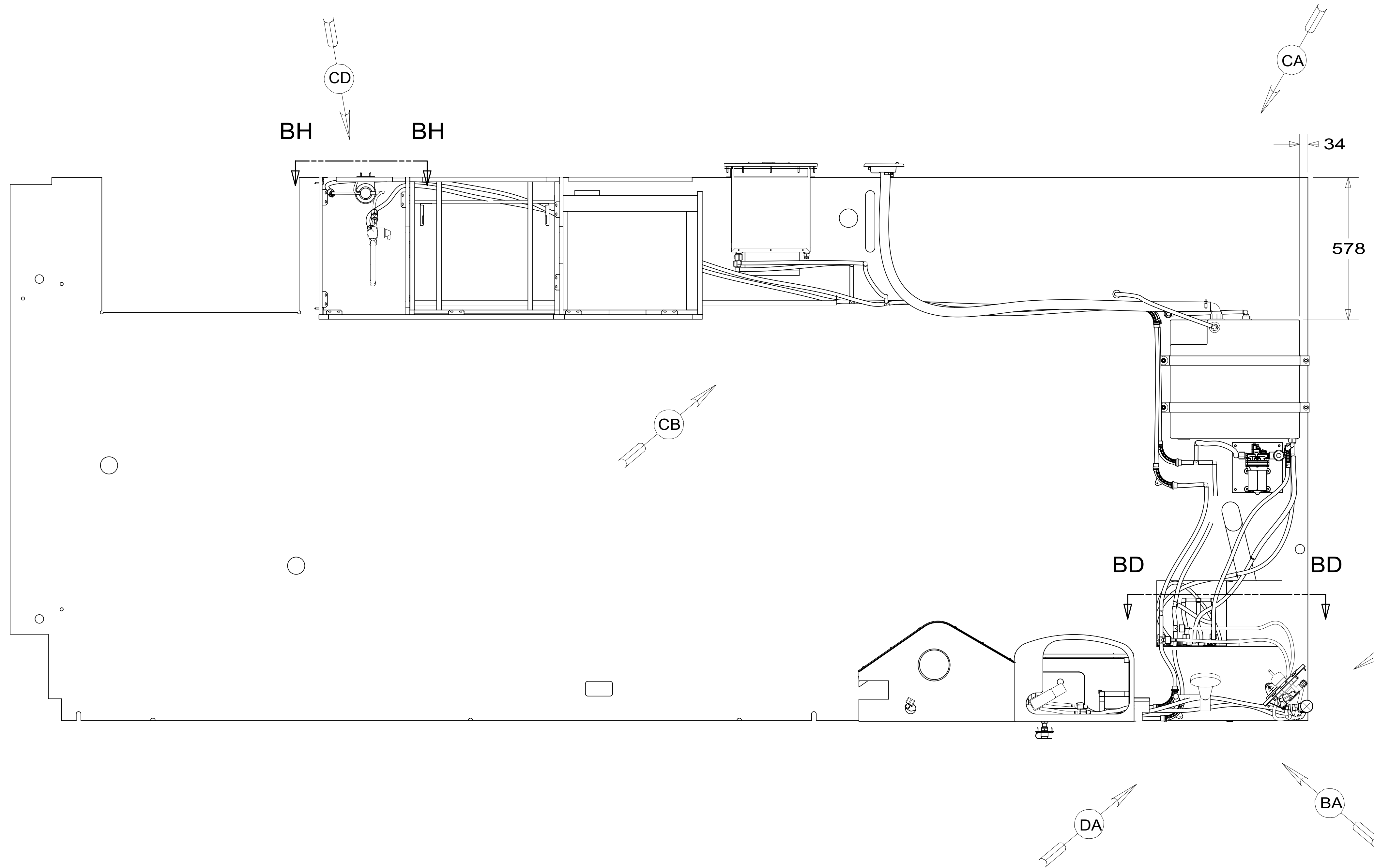


| REV | ZONE | REVISION RECORD  | DATE     | DFTR-ORIG |
|-----|------|------------------|----------|-----------|
| A   | ---  | INITIAL RELEASE  | 11/04/15 | 3660      |
| B   | ---  | CHG LENGTHS SHT3 | 5-12-16  | 1600-5472 |
| C   | ---  | CHG LENGTH SHT2  | 8-23-16  | 1600-5472 |



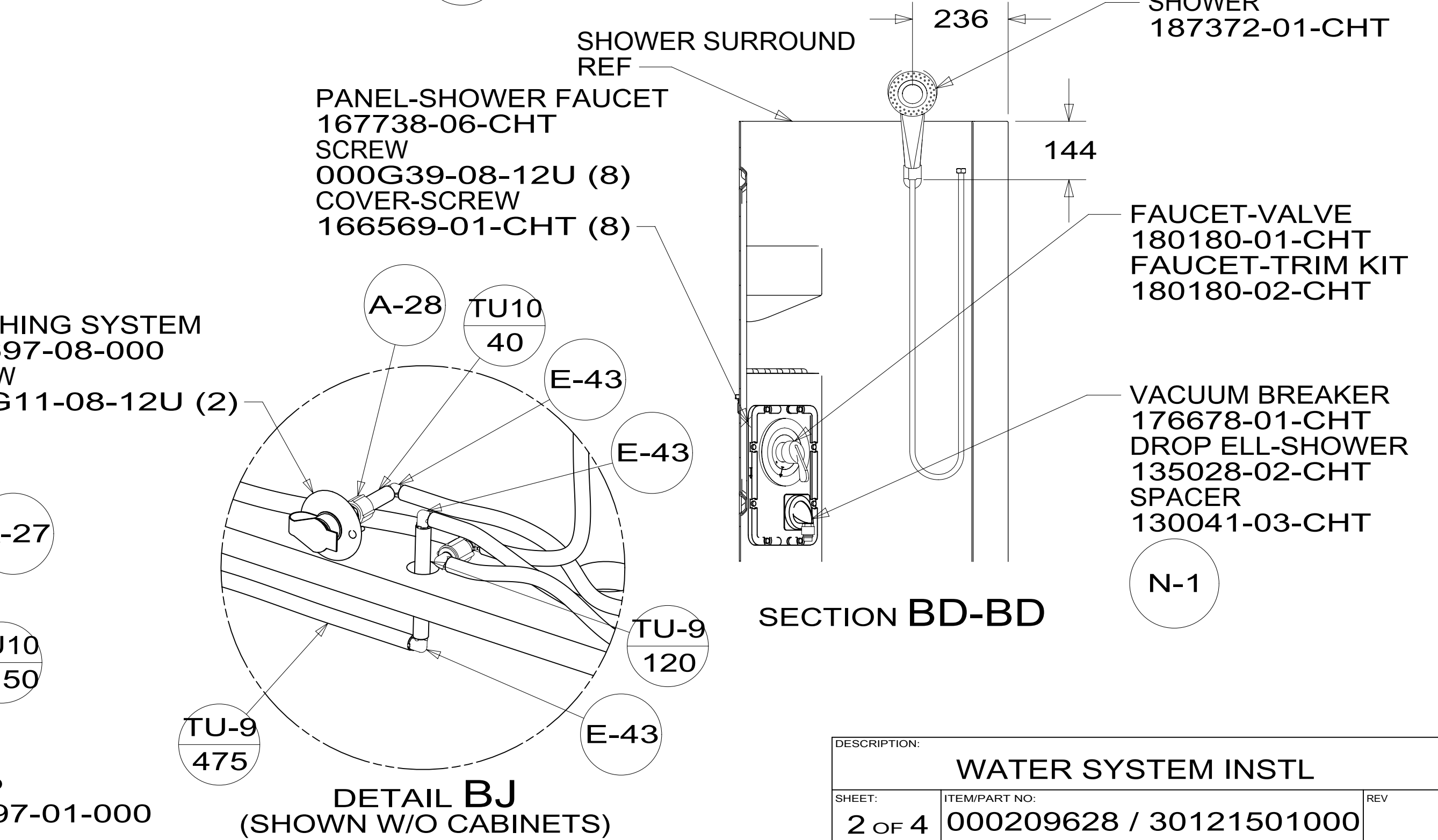
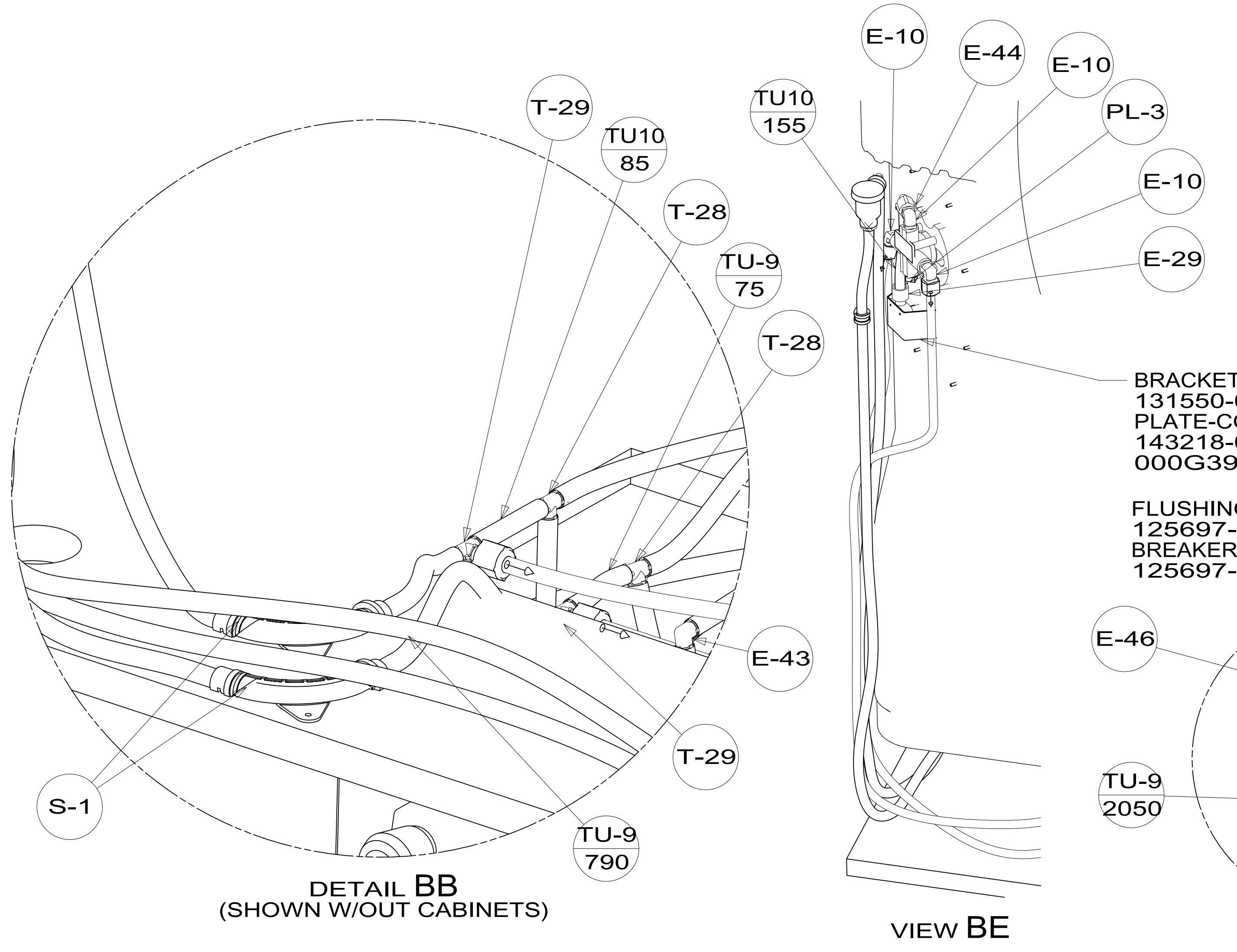
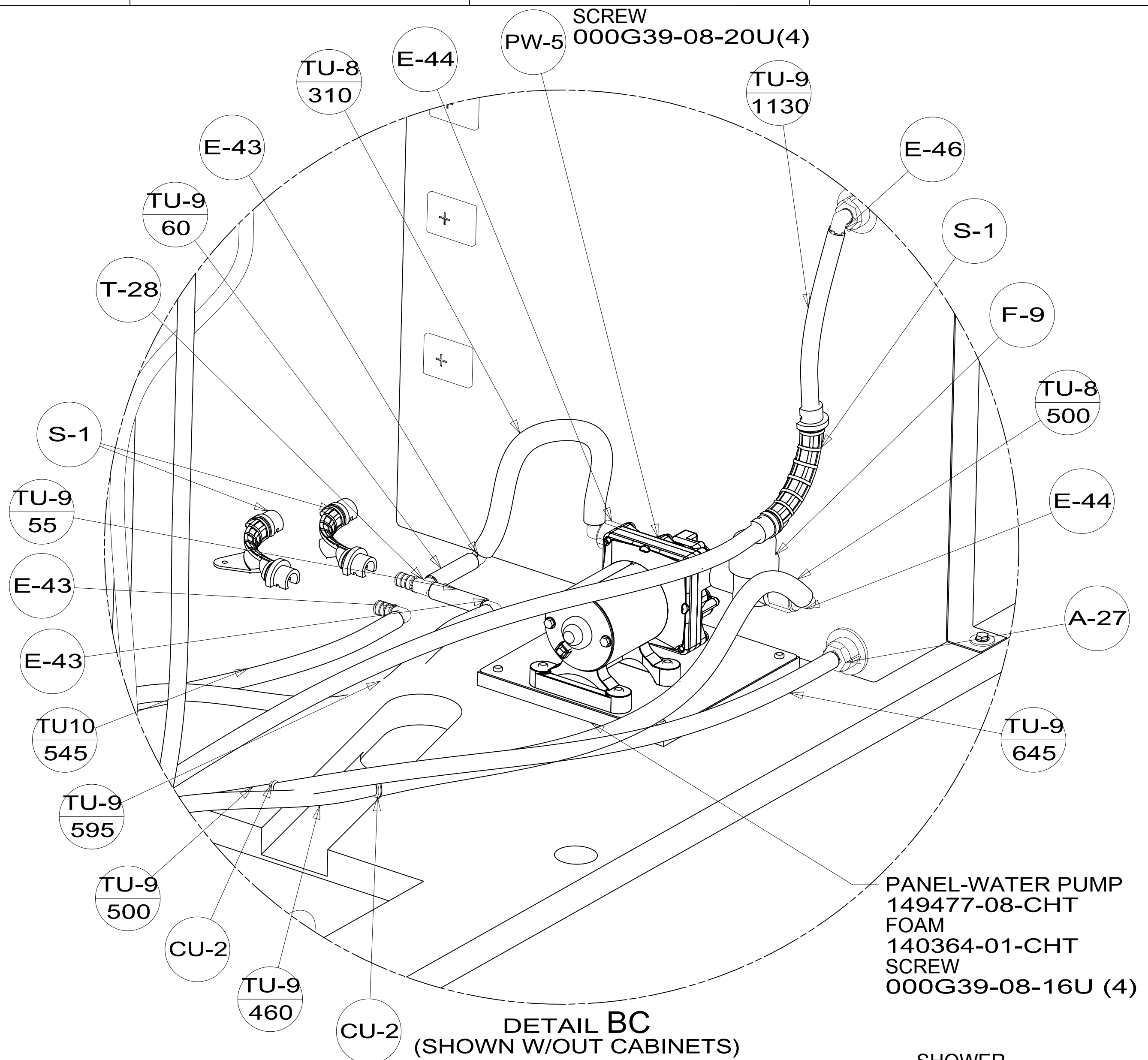
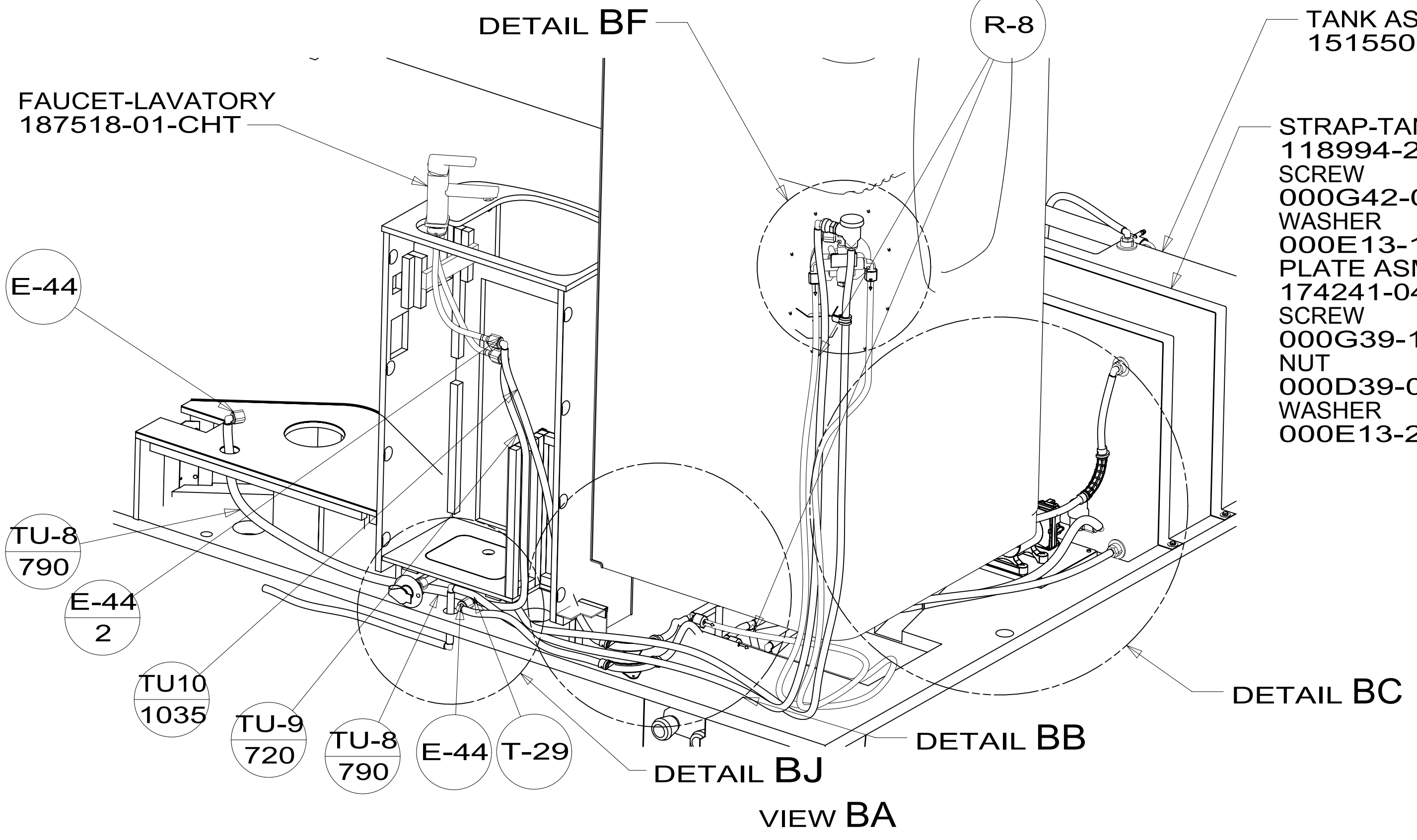
- NOTES:
- 10 MOUNT TO COACH FLOOR PRIOR TO INSTALLING ON FLOOR OF CHASSIS.
  - 9. INSTALL BYPASS PLUG FOR SYSTEM TESTING AND SHIPPING.
  - 8. ALL CRIMP FITTINGS TO 1/2" PEX TUBING REQUIRE 1/2" CLAMP 140171-03-000.
  - 7. ALL CRIMP FITTINGS TO 5/8" PEX TUBING REQUIRE 5/8" CLAMP 140171-04-000.
  - 6 LABEL HOT AND COLD SUPPLY TUBES AND TAPE FITTING TO TUBE BEFORE CABINET SET TO PREVENT MOVEMENT.
  - 5 ADD PIPE WRAP (LADDER SCRAP 110157-02-000) INSULATION.
  - 4 ADD TEFLON TAPE 010405-01-000.
  - 3. ALL TUBING TO BE SECURED AT 1200 INTERVALS MAXIMUM WITH CLAMP 010495-01-000 AND SCREW 000G67-10-12U OR EQUIVALENT.
  - 2. TUBING TO BE INSTALLED WITH SUFFICIENT SLOPE TO PROVIDE DRAINAGE TO NEAREST VALVE.
  - 1. PLASTIC FITTINGS TO BE SEALED WITH SEALANT 084456-01-000.

X-X

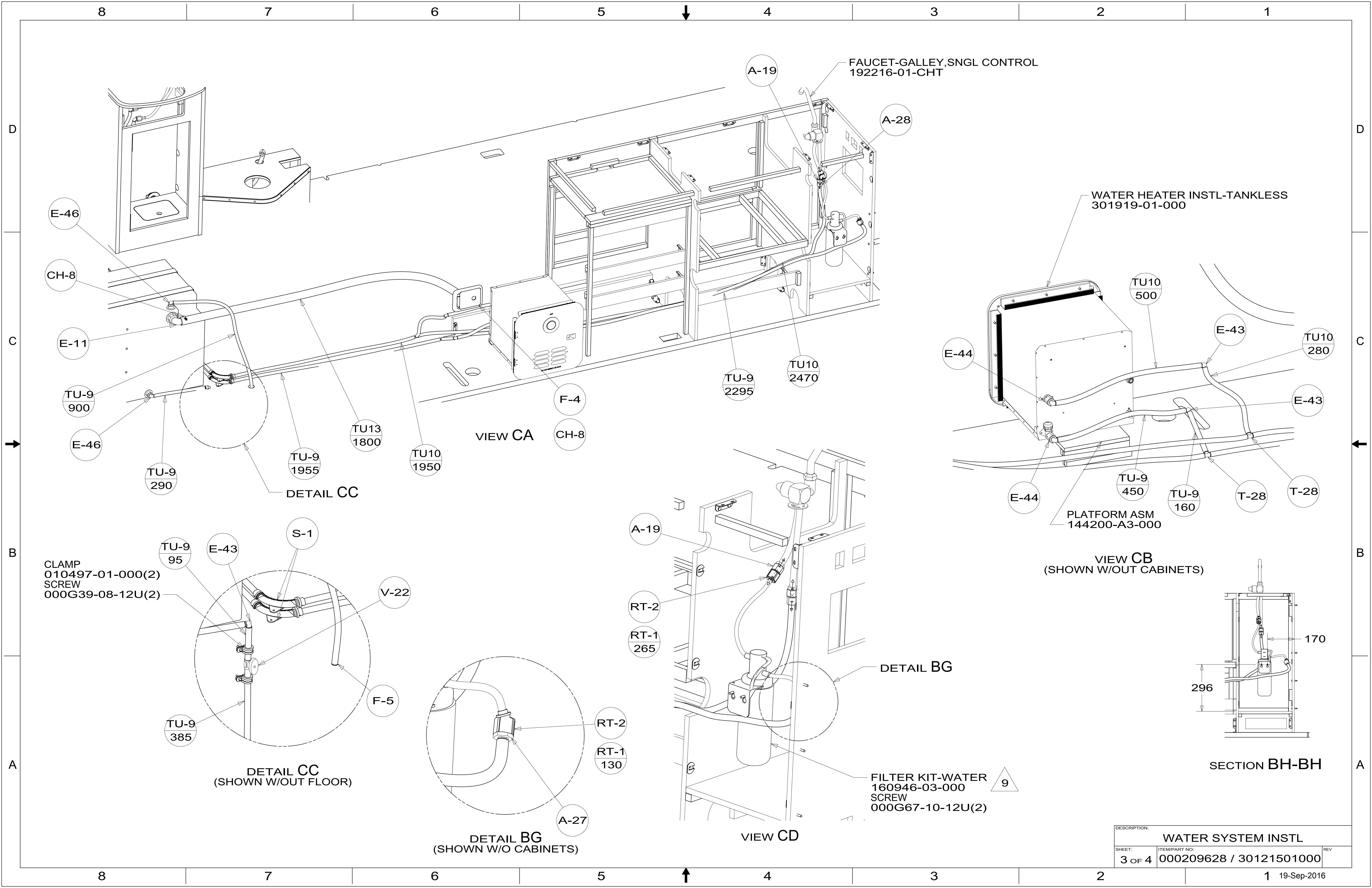
FOR  
WATER  
CALLOUTS  
SEE DWG NO.  
000209446 /  
303369-01-000

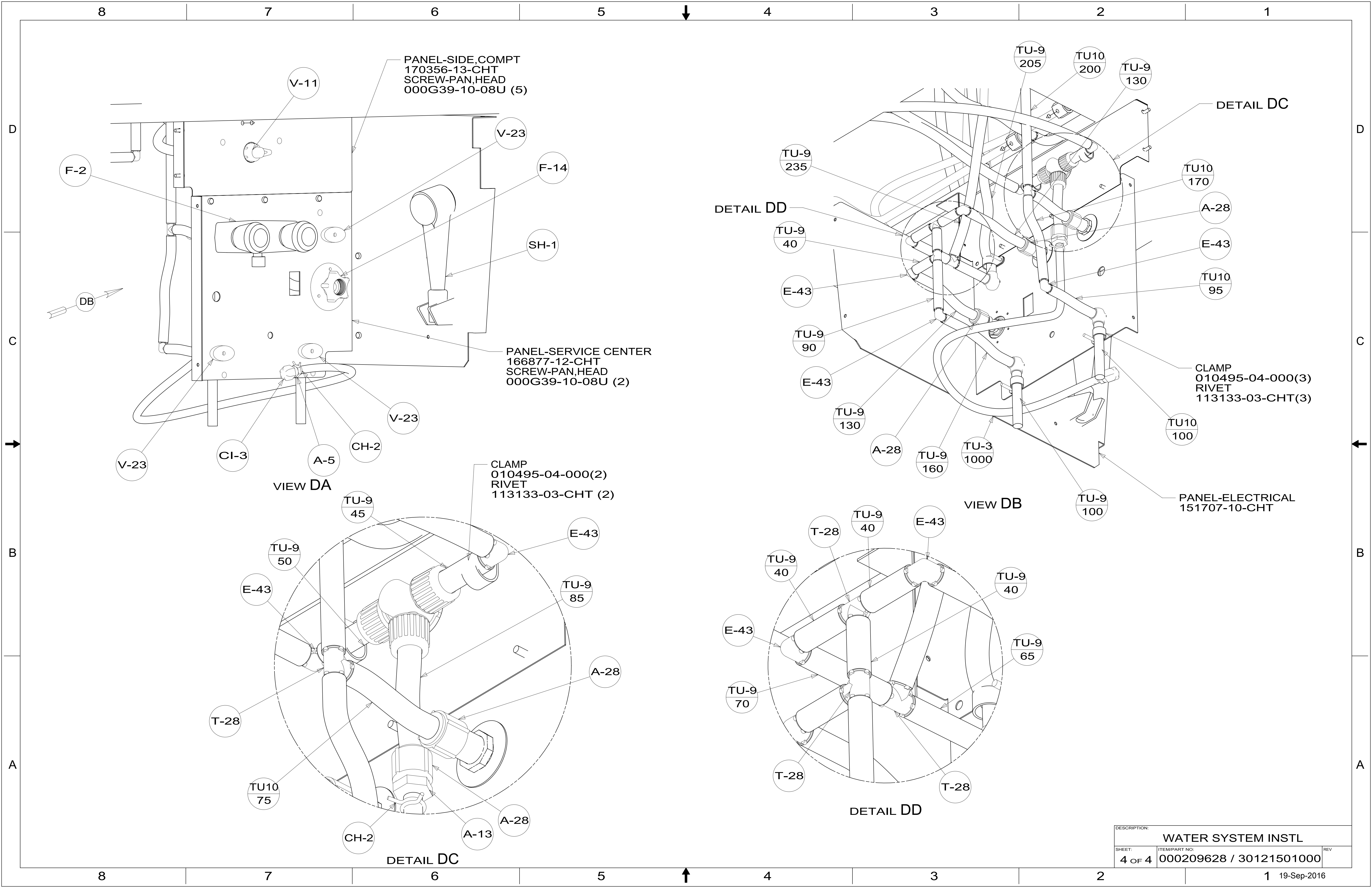
**WINNEBAGO**  
COPYRIGHT 2016 WINNEBAGO INDUSTRIES, INC.

|  |                                       |                   |
|--|---------------------------------------|-------------------|
| DSNR:  | ALL DIMENSIONS ARE IN MILLIMETERS     |                   |
| DFTR:  | MATERIAL:                             |                   |
| UNSPECIFIED TOLERANCES:                            | WHOLE DIM (X) :                       | 3                 |
|  | ONE-PLACE (X.X) :                     | 1.5               |
|  | TWO-PLACE (X.XX) :                    | 0.50              |
|  | ANGLE :                               | 1°                |
| REFER TO ES0018 FOR FASTENER TIGHTENING GUIDELINES | WEIGHT: (LBS)                         | FIRST USED: (REF) |
|  |                                       | 16 H25P           |
| DESCRIPTION:<br><b>WATER SYSTEM INSTL</b>          |                                       |                   |
| SHEET: 1 OF 4                                      | ITEM/PART NO: 000209628 / 30121501000 | REV:              |
| REF:   |                                       | 1 19-Sep-2016     |



|                    |                         |     |
|--------------------|-------------------------|-----|
| DESCRIPTION:       |                         |     |
| WATER SYSTEM INSTL |                         |     |
| SHEET:             | ITEM/PART NO.:          | REV |
| 2 OF 4             | 000209628 / 30121501000 |     |





PANEL-SIDE, COMPT  
170356-13-CHT  
SCREW-PAN, HEAD  
000G39-10-08U (5)

PANEL-SERVICE CENTER  
166877-12-CHT  
SCREW-PAN, HEAD  
000G39-10-08U (2)

CLAMP  
010495-04-000(2)  
RIVET  
113133-03-CHT (2)

CLAMP  
010495-04-000(3)  
RIVET  
113133-03-CHT(3)

PANEL-ELECTRICAL  
151707-10-CHT

VIEW DA

VIEW DB

DETAIL DC

DETAIL DD

|                    |                         |     |
|--------------------|-------------------------|-----|
| DESCRIPTION:       |                         |     |
| WATER SYSTEM INSTL |                         |     |
| SHEET:             | ITEM/PART NO:           | REV |
| 4 OF 4             | 000209628 / 30121501000 |     |