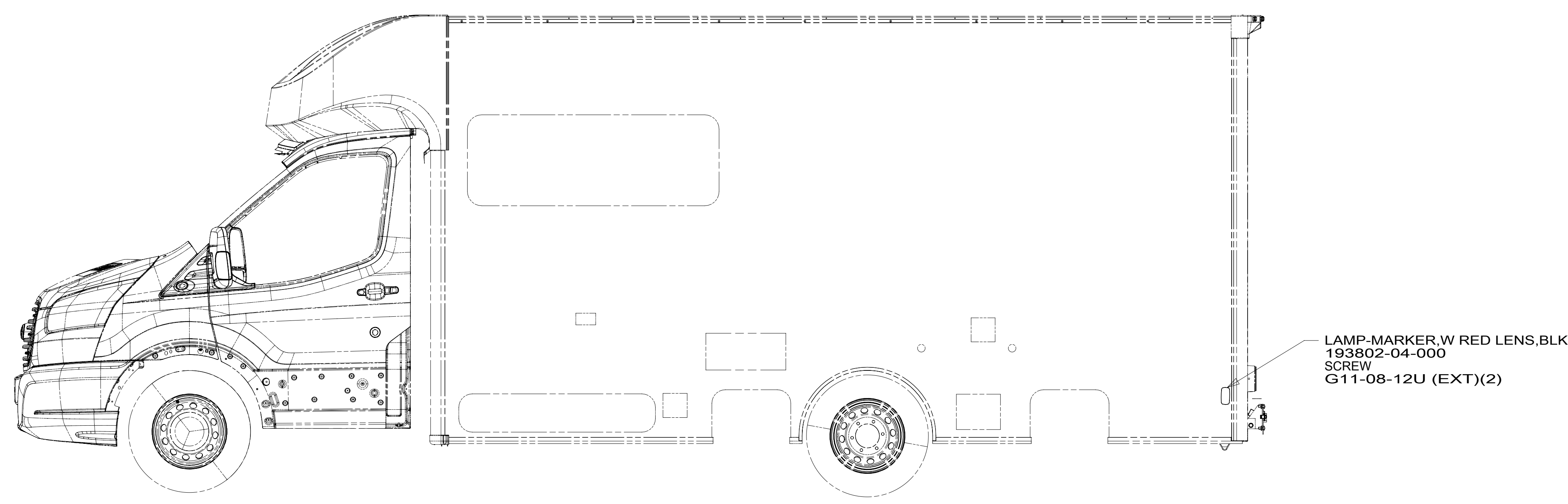
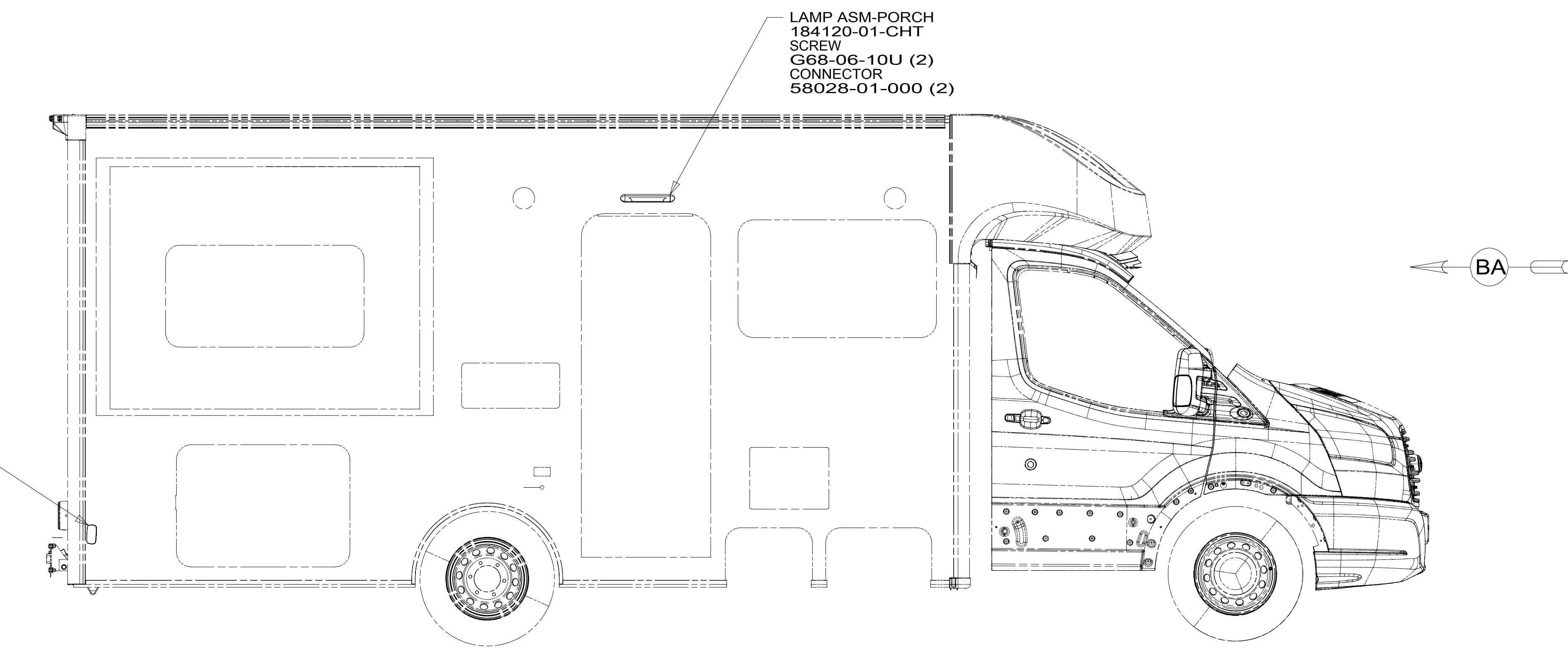


8 7 6 5 4 3 2 1

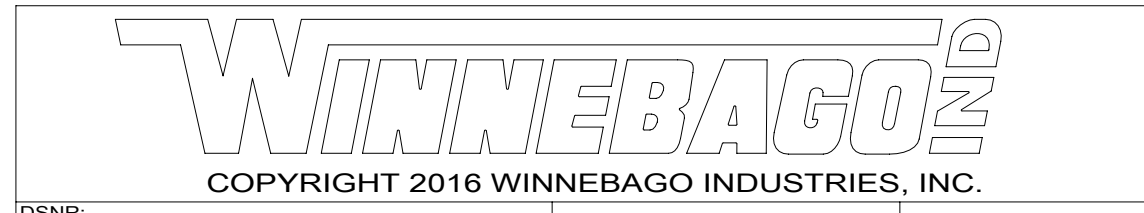
D  
C  
B  
A



FOR ELECTRICAL TORQUE SPECIFICATIONS SEE DWG NO. 128783-01-000

FOR ELECTRICAL CALLOUTS SEE DWG NO. 121339-01-000

- 265 CODES/STANDARDS-CSA/CMVSS
- 1B1 CODES/STANDARDS USA
- 1B1 265



DSNR:	ALL DIMENSIONS ARE IN MILLIMETERS	
DFFR:	MATERIAL:	
UNSPECIFIED TOLERANCES:		
WHOLE DIM (X) :	3	
ONE-PLACE (X.X) :	1.5	
TWO-PLACE (X.XX) :	0.50	
ANGLE :	1°	
REFER TO ES0018 FOR FASTENER TIGHTENING GUIDELINES	WEIGHT: (LBS)	FIRST USED:
		16 423T

DESCRIPTION:  
**WIRING INSTL-EXTERIOR LAMPS**

SHEET: 1 OF 2 ITEM/PART NO.: 000209584 / 30102101000 REF: 1 16-Nov-2016

8 7 6 5 4 3 2 1

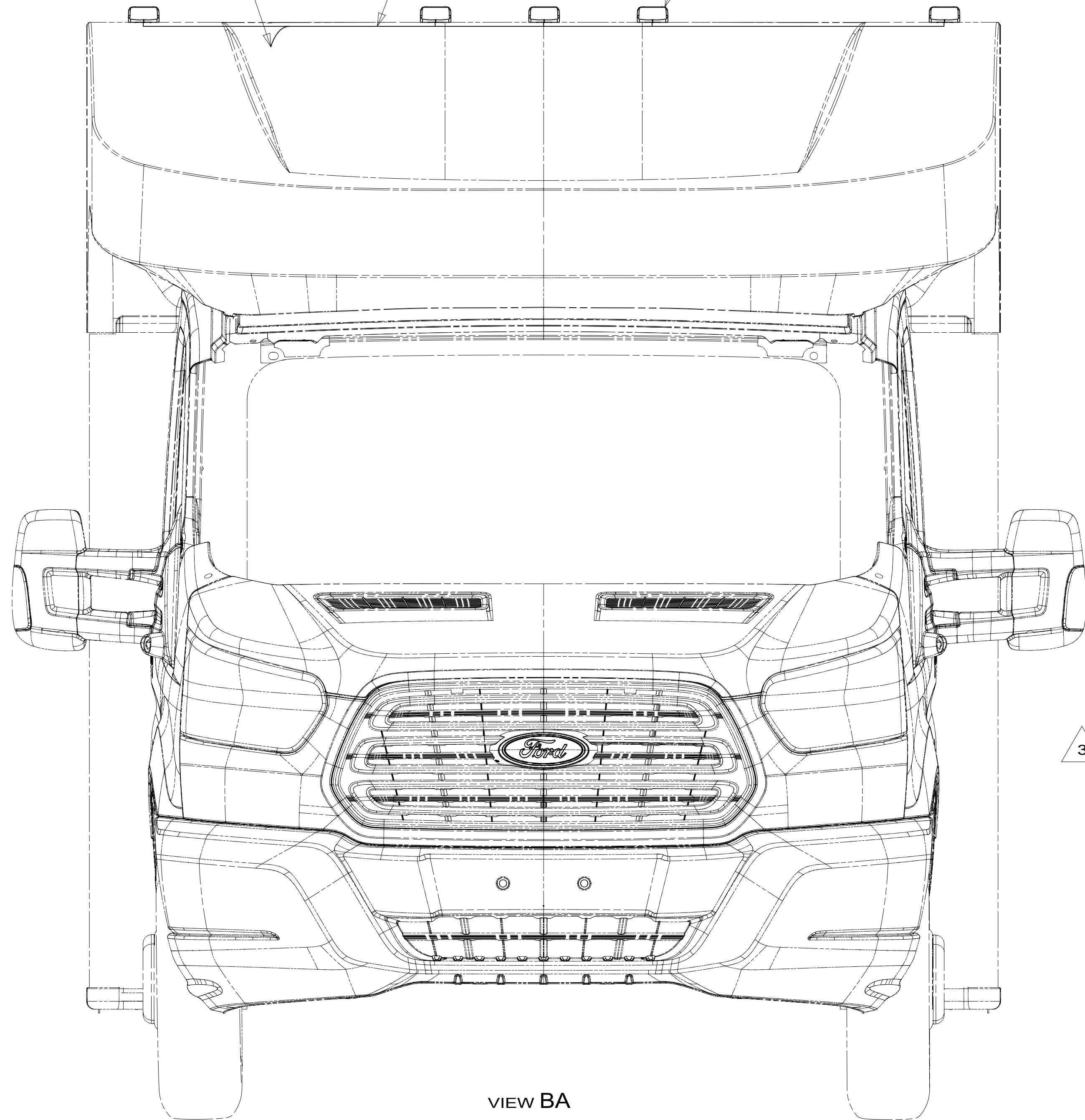
2 PIN HOUSING  
TO WIRE ASM-ROOF

WIRE ASM-CLEARANCE LAMPS  
191817-01-000

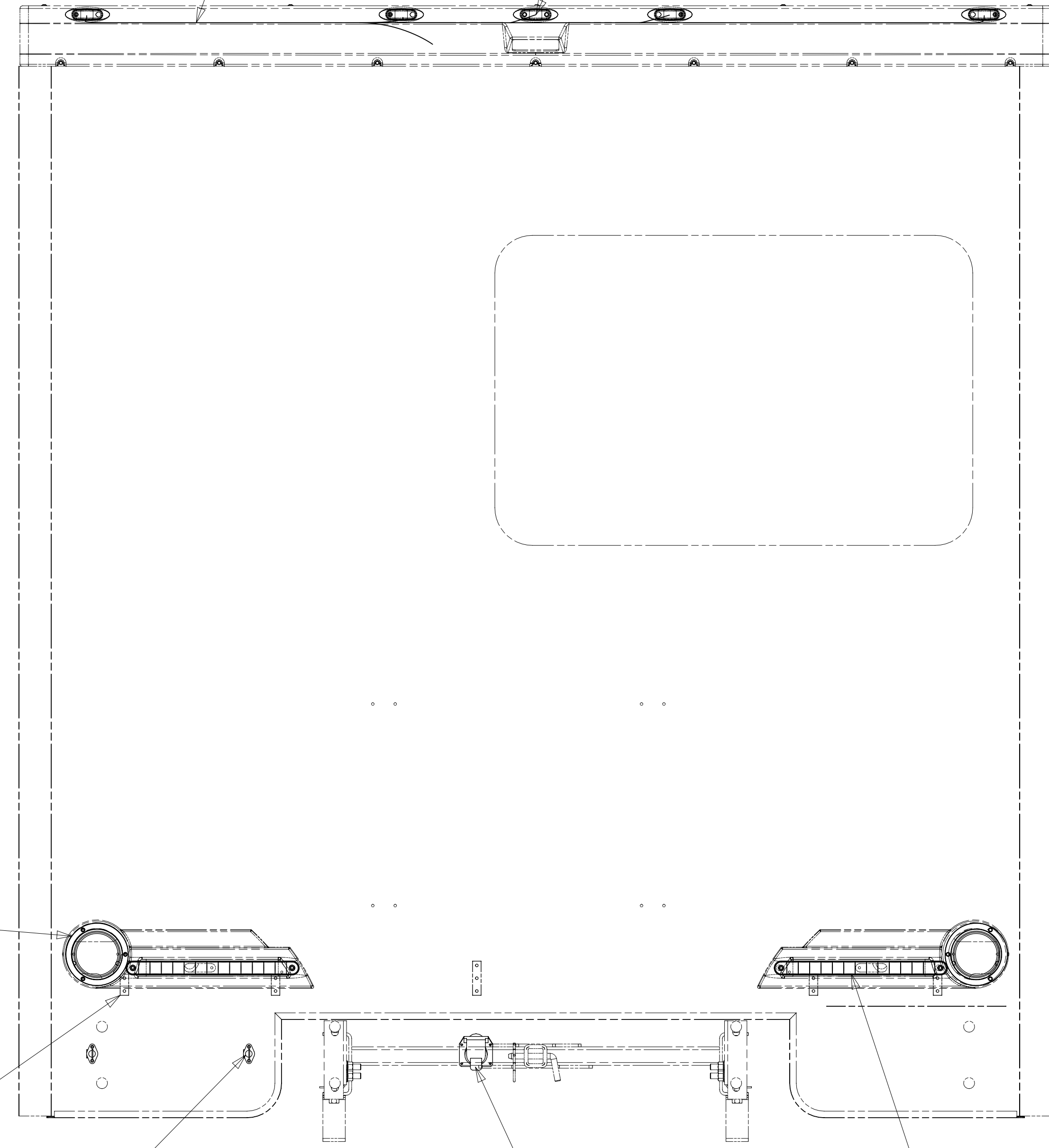
LAMP ASM-CLEARANCE,FRONT  
170776-01-000 (5)

WIRE ASM-CLEARANCE LAMP  
191816-01-000

LAMP ASM-CLEARANCE <sup>2</sup>



VIEW BA



VIEW BB

<sup>3</sup> LAMP ASM-BACKUP  
184674-01-000 (2)  
BEZEL-LAMP  
184674-02-000 (2)  
SCREW  
G11-08-12U (6)

<sup>4</sup> STRAP-W/HOLES  
(REF)  
WIRE TIE  
08343-02-000 (5)

LIGHT-LICENSE  
87201-01-000 (2)  
SCREW  
G11-06-12U (EXT)(4)

LAMP ASM-STOP/TURN/TAIL  
184653-01-000 (2)  
SCREW  
G11-08-12U (4) <sup>1</sup>

CONNECTOR-TRAILER  
157593-01-000  
SCREW  
101618-01-000 (4) 240

<sup>4</sup> CLAMP TRAILER HITCH AND EXTERIOR LAMP WIRE  
ALONG BOTTOM OF BACKWALL ASSEMBLY.

<sup>3</sup> CUT CONNECTOR OFF OF LIGHT ASM. CONNECT CIRCUIT TR TO  
BLACK WIRE, CONNECT CIRCUIT MS TO WHITE WIRE.

<sup>2</sup> SEE TRIM ASM-BACKWALL,UPPER FOR ADDITIONAL INFORMATION.

<sup>1</sup> CONNECT CIRCUIT SC OR SD TO RED WIRE, CONNECT CIRCUIT  
MM TO BROWN WIRE, CONNECT CIRCUIT MS TO WHITE WIRE.

NOTES:

240 TRAILER HITCH

265 CODES/STANDARDS-CSA/CMVSS

1B1 CODES/STANDARDS USA

1B1 265

DESCRIPTION:  
**WIRING INSTL-EXTERIOR LAMPS**

SHEET: **2 OF 2** ITEM/PART NO: **000209584 / 30102101000** REV

FOR ELECTRICAL  
TORQUE  
SPECIFICATIONS  
SEE DWG NO.  
128783-01-000

X-X

FOR  
ELECTRICAL  
CALLOUTS  
SEE DWG NO.  
121339-01-000