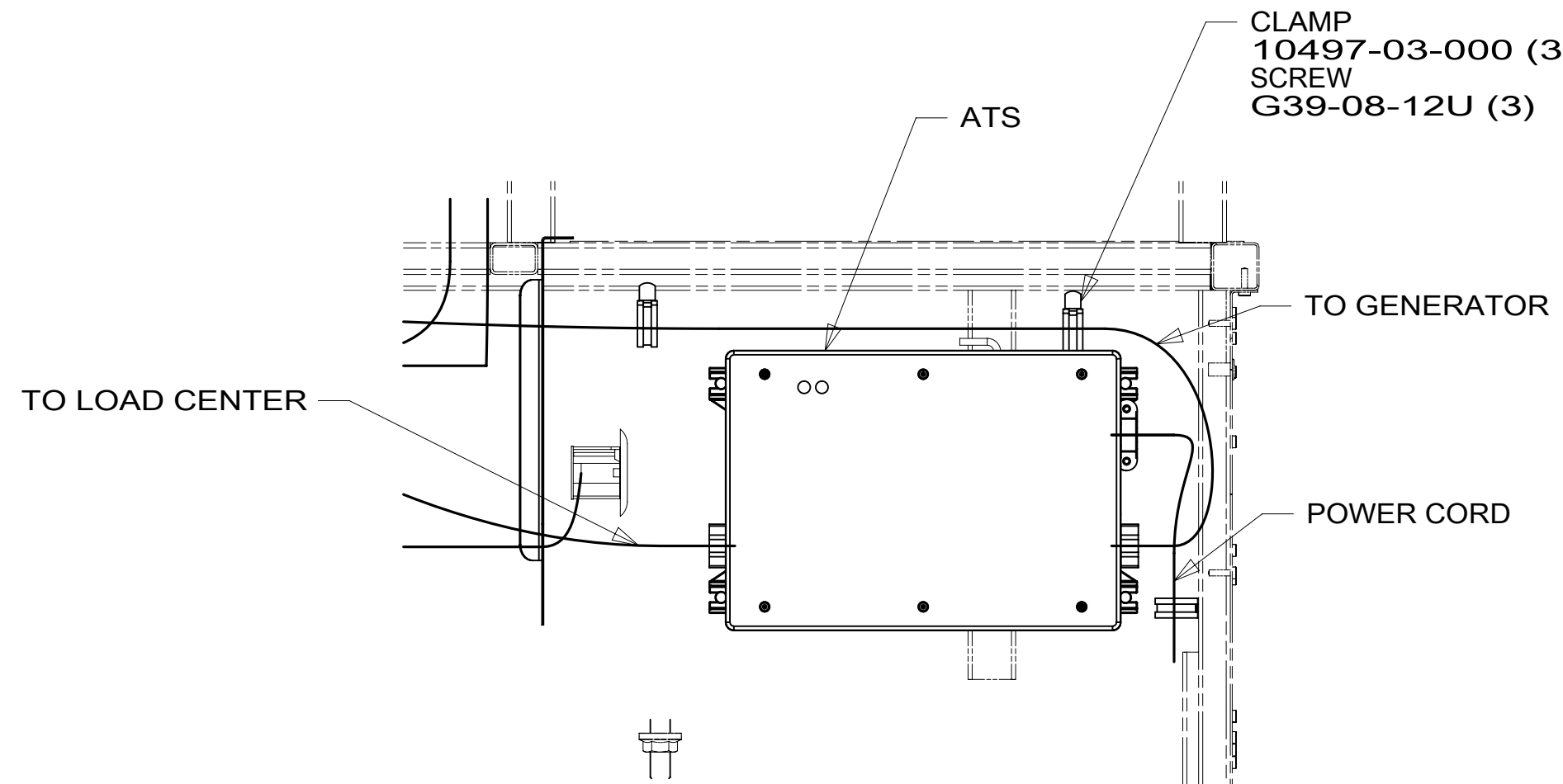
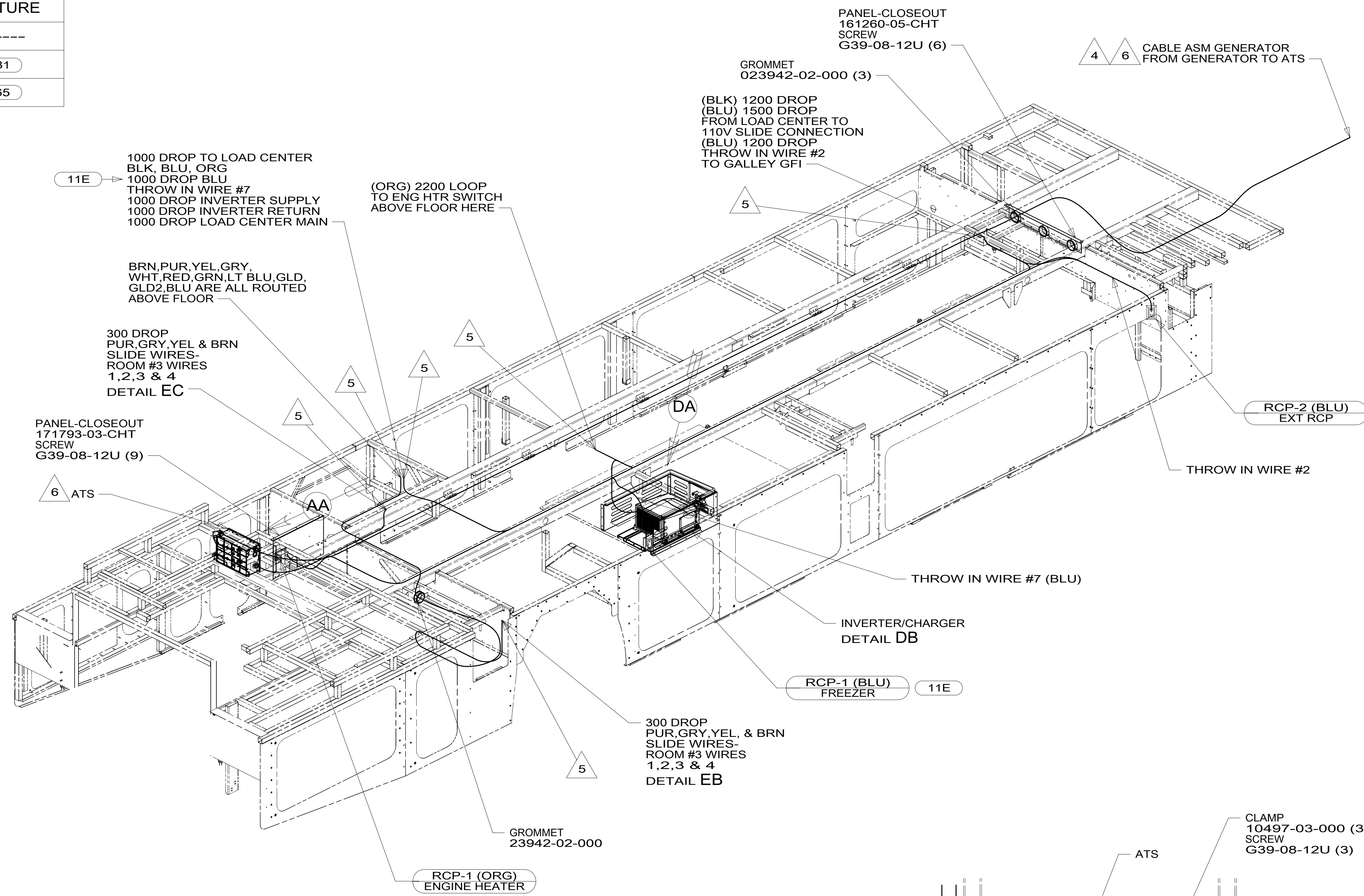


DRAWING NO	FEATURE
302073-01	-----
302073-12	(1B1)
302073-16	(265)



- 6 SEE LOAD CENTER/ATS ASM FOR ADDITIONAL INFORMATION.
- 5 TO ABOVE FLOOR.
- 4 SEE GENERATOR INSTALLATION FOR ADDITIONAL INFORMATION.

3. WIRES THAT REST ON WIRE TRAYS ARE TO BE TIED DOWN WITH WIRE TIE 8343-04-000.
2. CLAMP TO FLOOR SUPPORT TUBES AS NECESSARY WITH CLAMP 10497-01-000.
1. AT MINIMUM ALL WIRES TO BE SUPPORTED AND SECURED PER CODE REQUIREMENTS. USE CLAMP 10495 OR 10497 OR WIRE TIE 8343 OR 108046 AND SCREW G67-XX-XXX OR G56-XX-XXX AS APPROPRIATE FOR INSTALLATION.

NOTES:

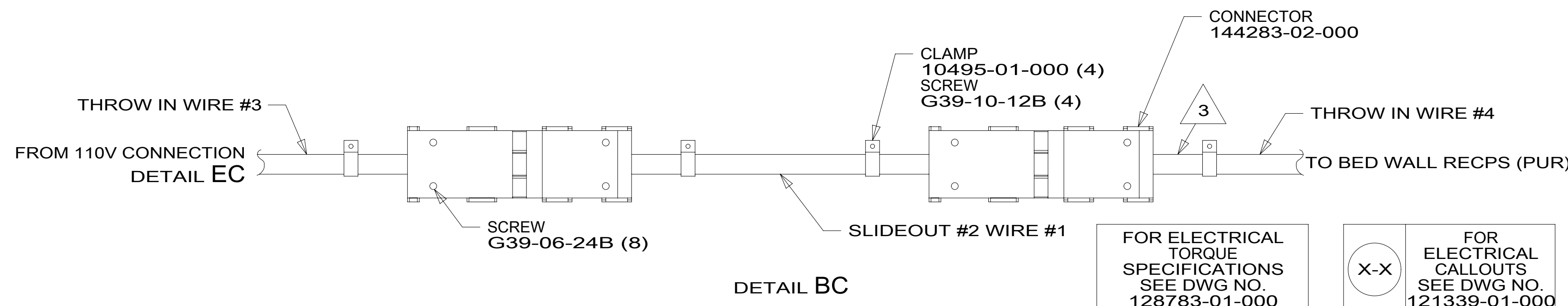
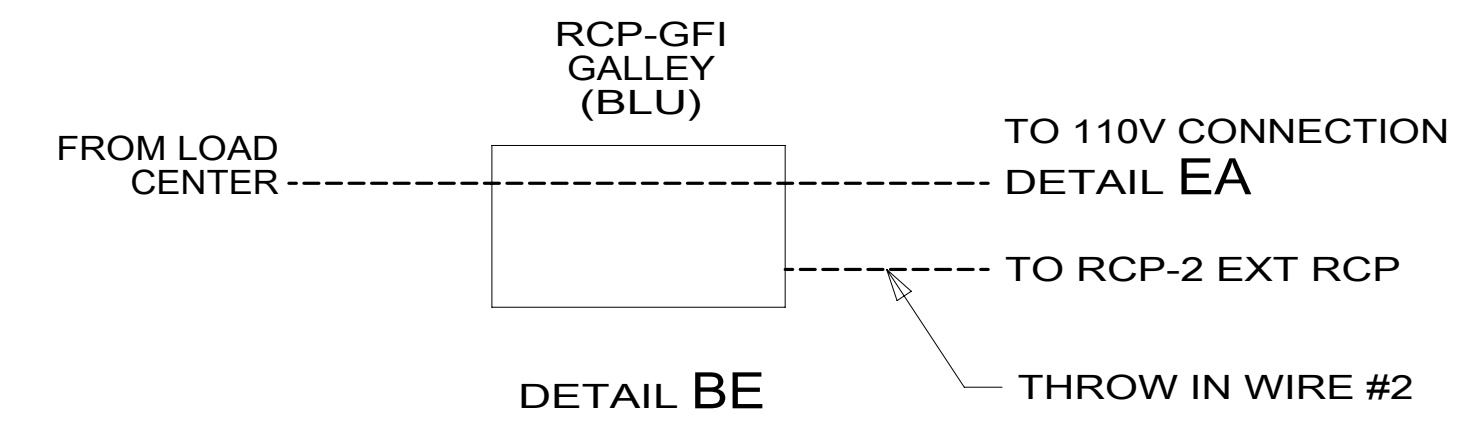
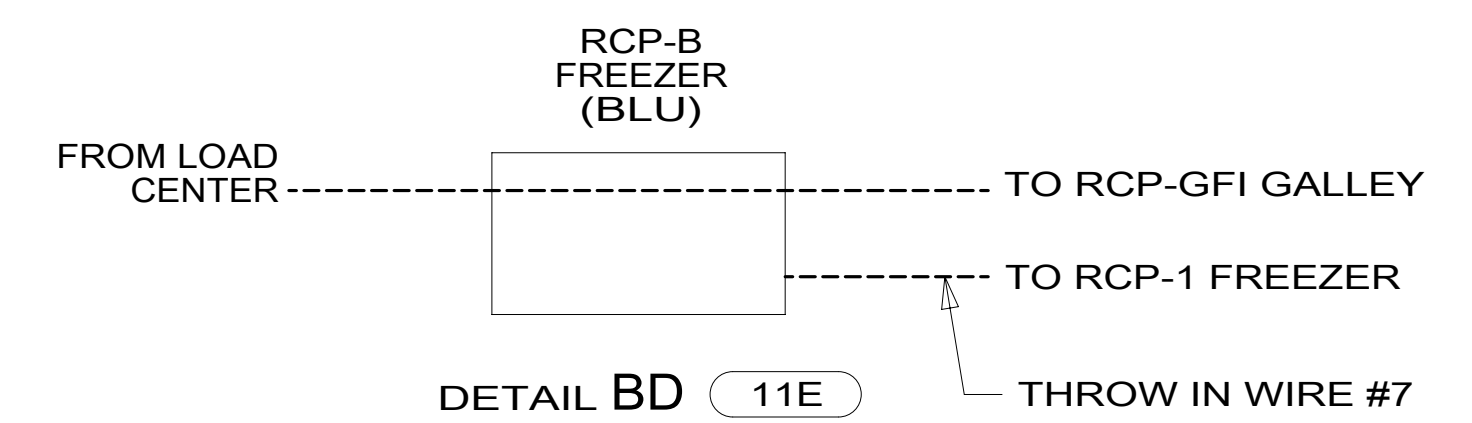
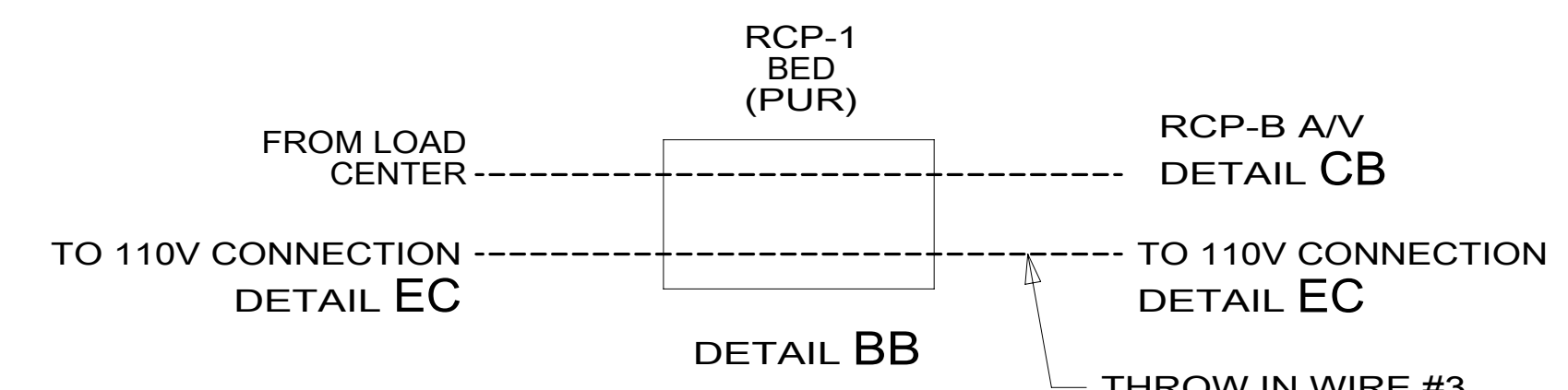
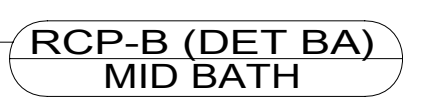
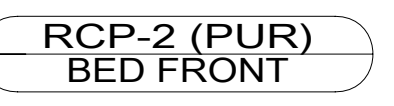
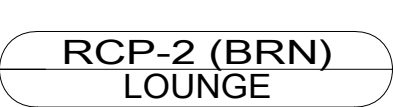
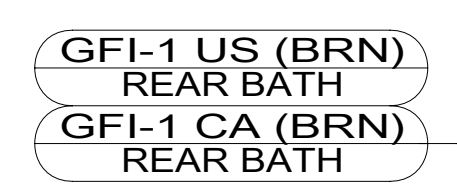
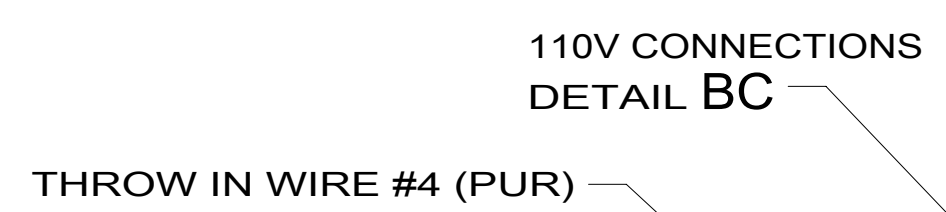
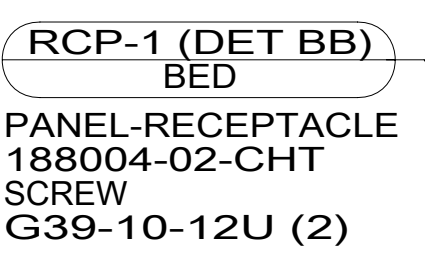
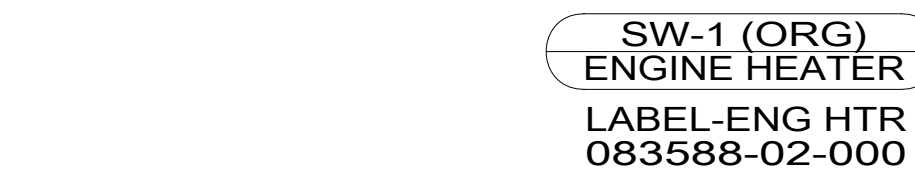
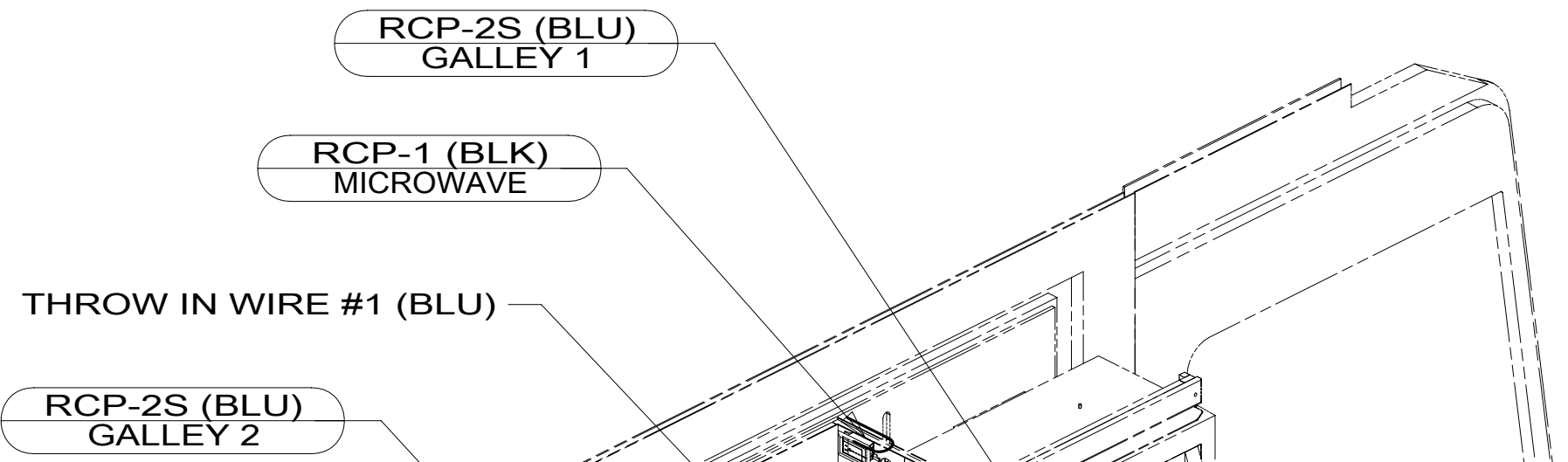
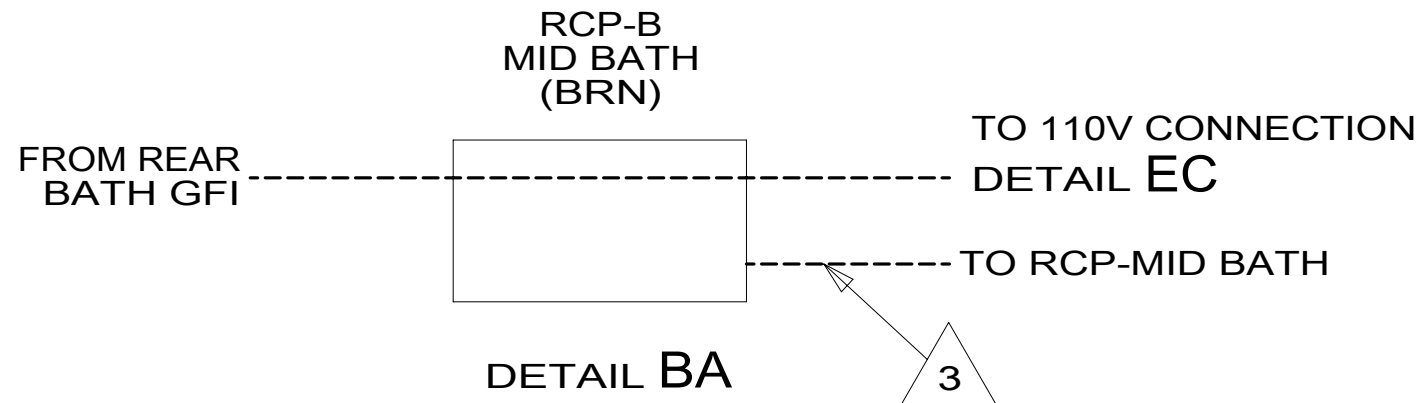
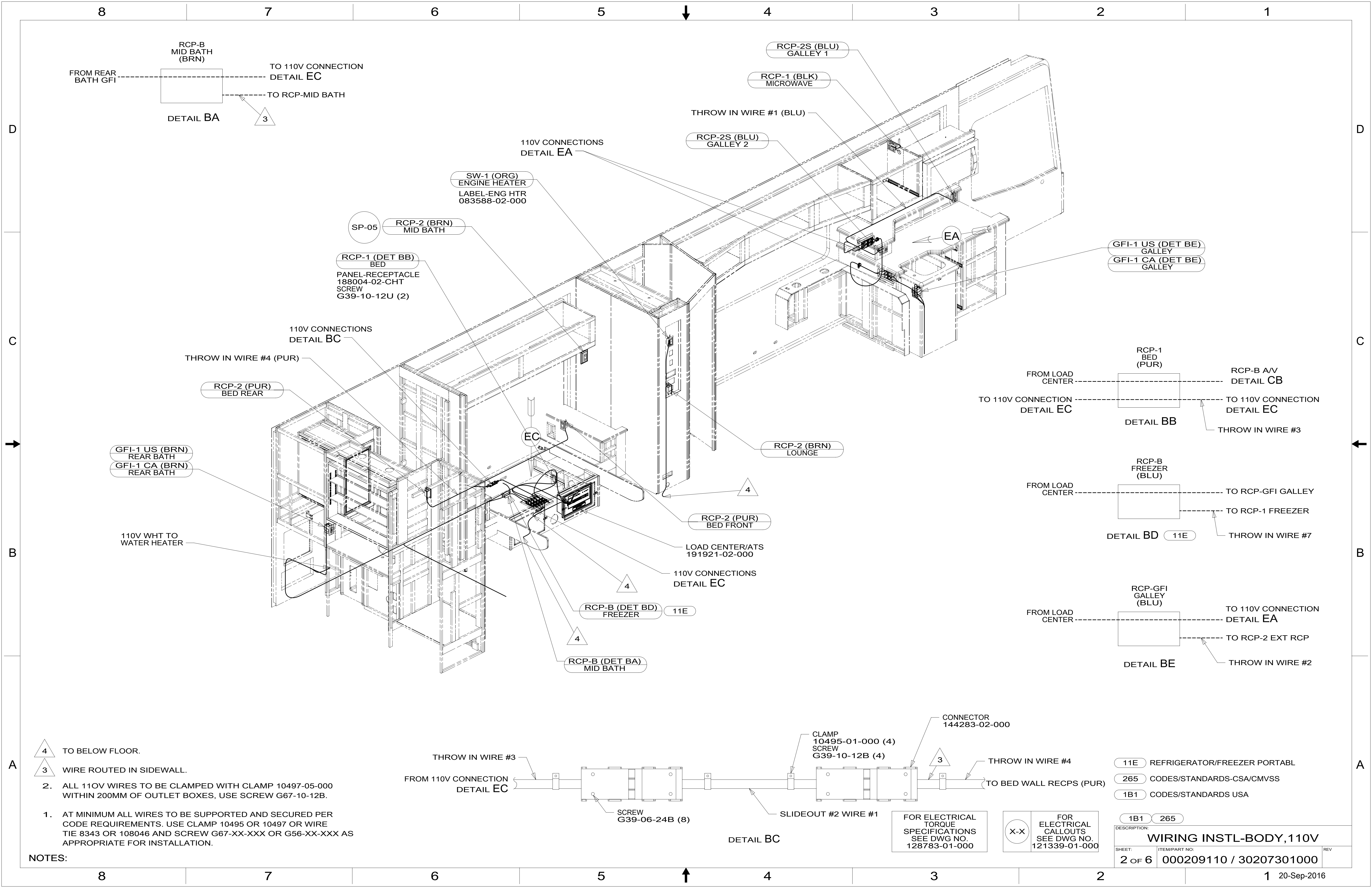
- 11E REFRIGERATOR/FREEZER PORTABLE
- 265 CODES/STANDARDS-CSA/CMVSS
- 1B1 CODES/STANDARDS USA

WINNEBAGO
COPYRIGHT 2016 WINNEBAGO INDUSTRIES, INC.

DSNR:	ALL DIMENSIONS ARE IN MILLIMETERS
DFFR:	MATERIAL:
UNSPECIFIED TOLERANCES:	
WHOLE DIM (X) :	3
ONE-PLACE (X.X) :	1.5
TWO-PLACE (X.XX) :	0.50
ANGLE :	1°
REFER TO ES0018 FOR FASTENER TIGHTENING GUIDELINES	WEIGHT: (LBS) FIRST USED:
DESCRIPTION: WIRING INSTL-BODY, 110V	
SHEET: 1 OF 6	ITEM/PART NO: 000209110 / 30207301000

FOR ELECTRICAL TORQUE SPECIFICATIONS SEE DWG NO. 128783-01-000

FOR ELECTRICAL CALLOUTS SEE DWG NO. 121339-01-000



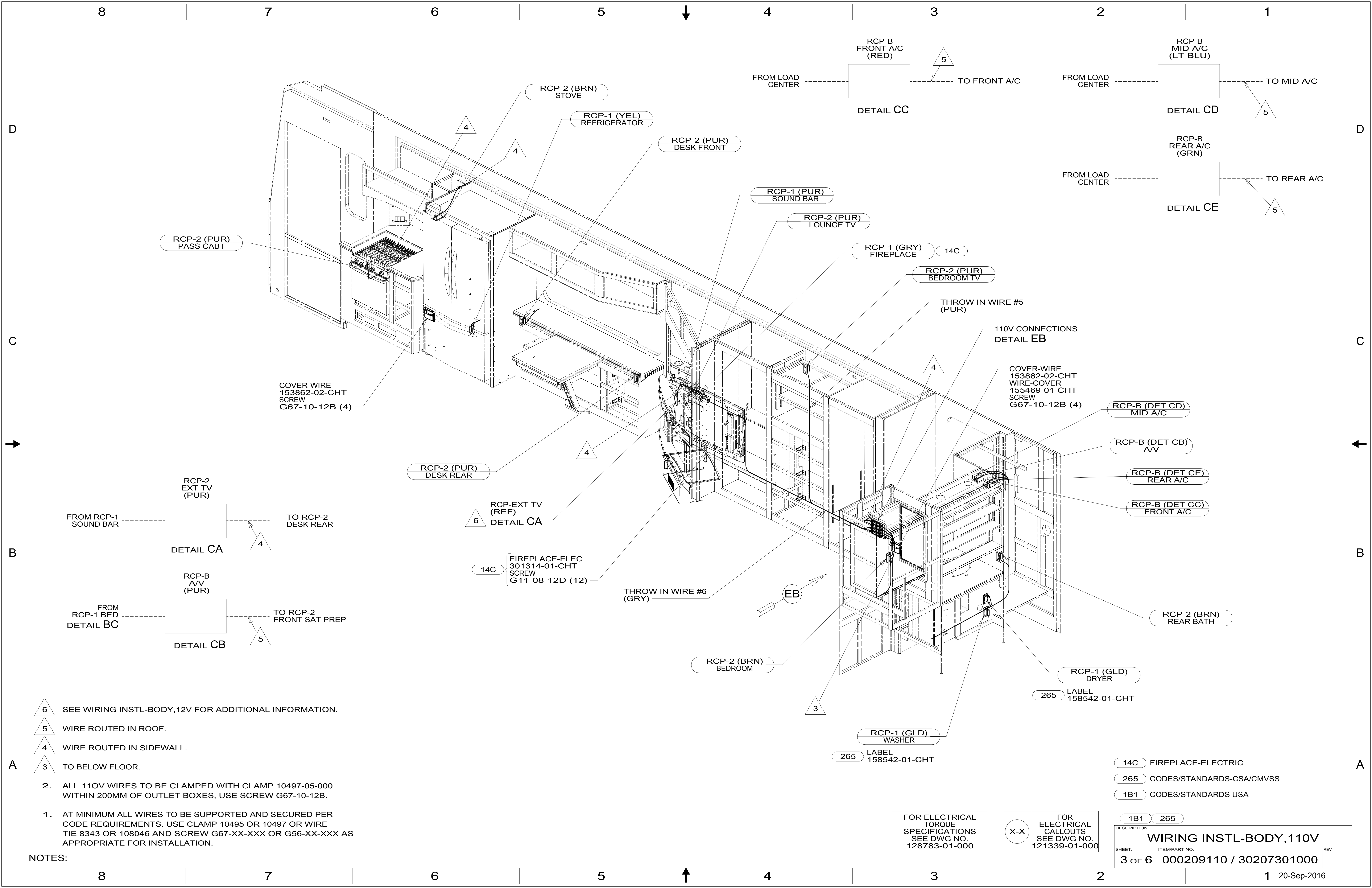
FOR ELECTRICAL TORQUE SPECIFICATIONS SEE DWG NO. 128783-01-000

FOR ELECTRICAL CALLOUTS SEE DWG NO. 121339-01-000

- 11E REFRIGERATOR/FREEZER PORTABLE
- 265 CODES/STANDARDS-CSA/CMVSS
- 1B1 CODES/STANDARDS USA

DESCRIPTION: WIRING INSTL-BODY, 110V		
SHEET: 2 OF 6	ITEM/PART NO: 000209110 / 30207301000	REV
20-Sep-2016		

- NOTES:
1. AT MINIMUM ALL WIRES TO BE SUPPORTED AND SECURED PER CODE REQUIREMENTS. USE CLAMP 10495 OR 10497 OR WIRE TIE 8343 OR 108046 AND SCREW G67-XX-XXX OR G56-XX-XXX AS APPROPRIATE FOR INSTALLATION.
 2. ALL 110V WIRES TO BE CLAMPED WITH CLAMP 10497-05-000 WITHIN 200MM OF OUTLET BOXES, USE SCREW G67-10-12B.
- 4 TO BELOW FLOOR.
3 WIRE ROUTED IN SIDEWALL.



RCP-2 (PUR)
PASS CABT

COVER-WIRE
153862-02-CHT
SCREW
G67-10-12B (4)

RCP-2
EXT TV
(PUR)

RCP-B
A/V
(PUR)

RCP-2 (PUR)
DESK REAR

RCP-EXT TV
(REF)
DETAIL CA

FIREPLACE-ELEC
301314-01-CHT
SCREW
G11-08-12D (12)

THROW IN WIRE #6
(GRY)

RCP-2 (BRN)
BEDROOM

RCP-1 (GLD)
WASHER

265 LABEL
158542-01-CHT

RCP-1 (GLD)
DRYER

265 LABEL
158542-01-CHT

RCP-2 (BRN)
REAR BATH

RCP-B (DET CD)
MID A/C

RCP-B (DET CB)
A/V

RCP-B (DET CE)
REAR A/C

RCP-B (DET CC)
FRONT A/C

RCP-B
FRONT A/C
(RED)
DETAIL CC

RCP-B
MID A/C
(LT BLU)
DETAIL CD

RCP-B
REAR A/C
(GRN)
DETAIL CE

110V CONNECTIONS
DETAIL EB

COVER-WIRE
153862-02-CHT
WIRE-COVER
155469-01-CHT
SCREW
G67-10-12B (4)

RCP-1 (GRY)
FIREPLACE

RCP-2 (PUR)
BEDROOM TV

RCP-2 (PUR)
LOUNGE TV

RCP-1 (PUR)
SOUND BAR

RCP-2 (PUR)
DESK FRONT

RCP-1 (YEL)
REFRIGERATOR

RCP-2 (BRN)
STOVE

FOR ELECTRICAL
TORQUE
SPECIFICATIONS
SEE DWG NO.
128783-01-000

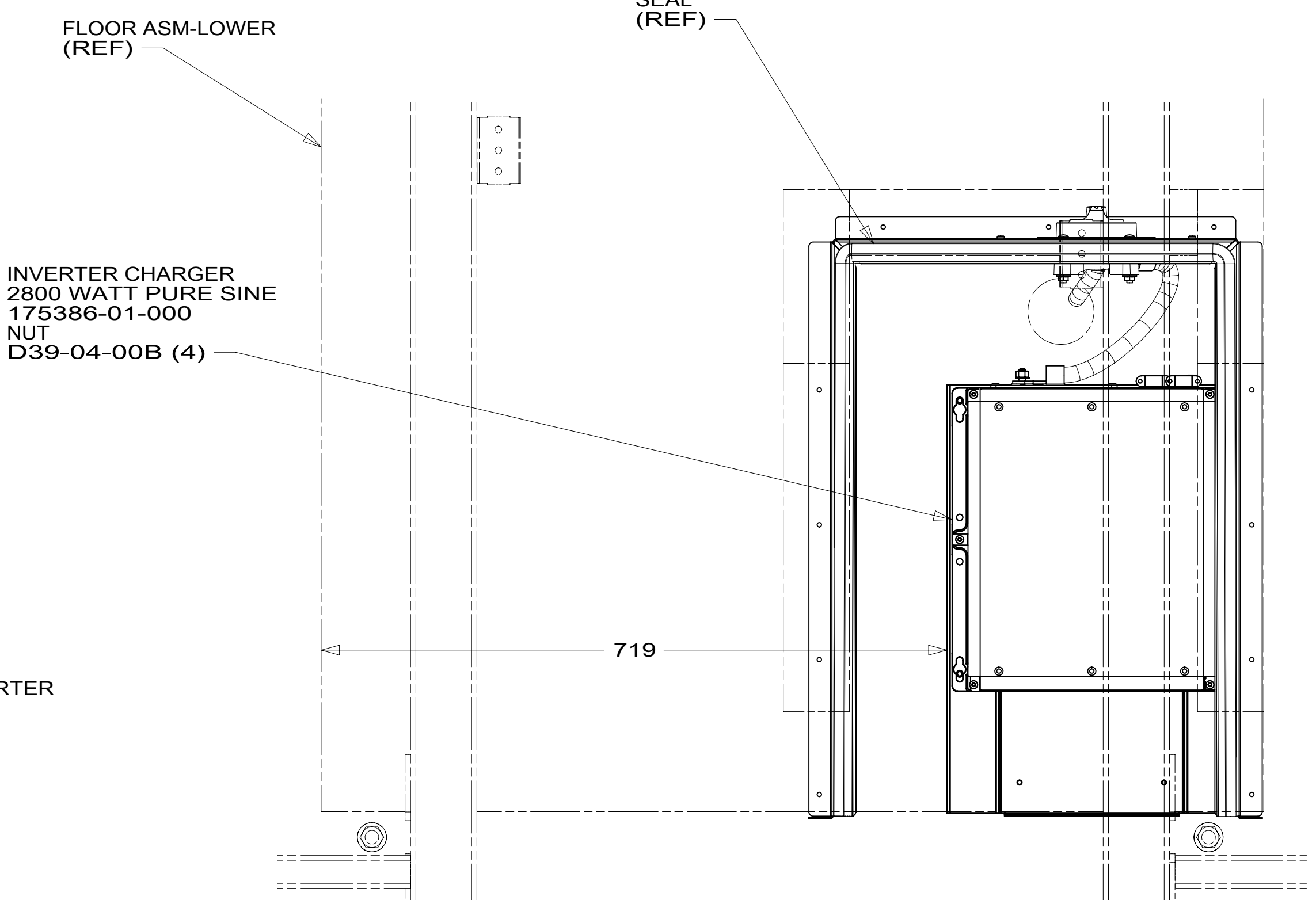
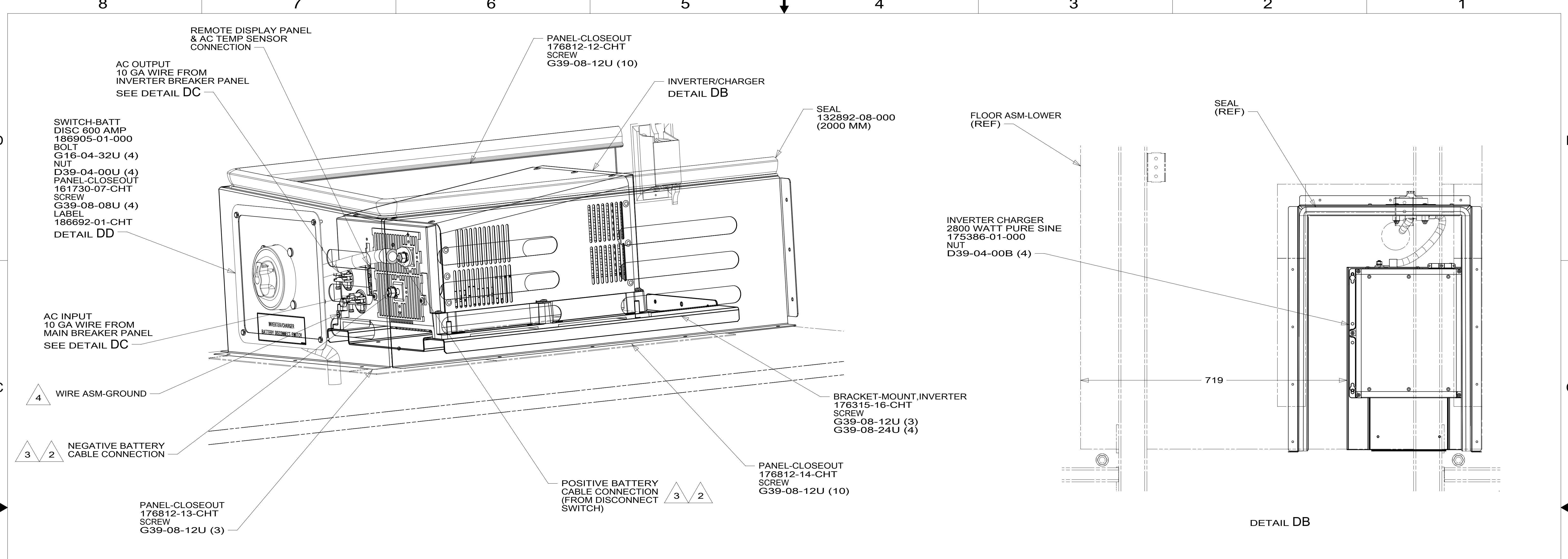
FOR ELECTRICAL
CALLOUTS
SEE DWG NO.
121339-01-000

- 14C FIREPLACE-ELECTRIC
- 265 CODES/STANDARDS-CSA/CMVSS
- 1B1 CODES/STANDARDS USA

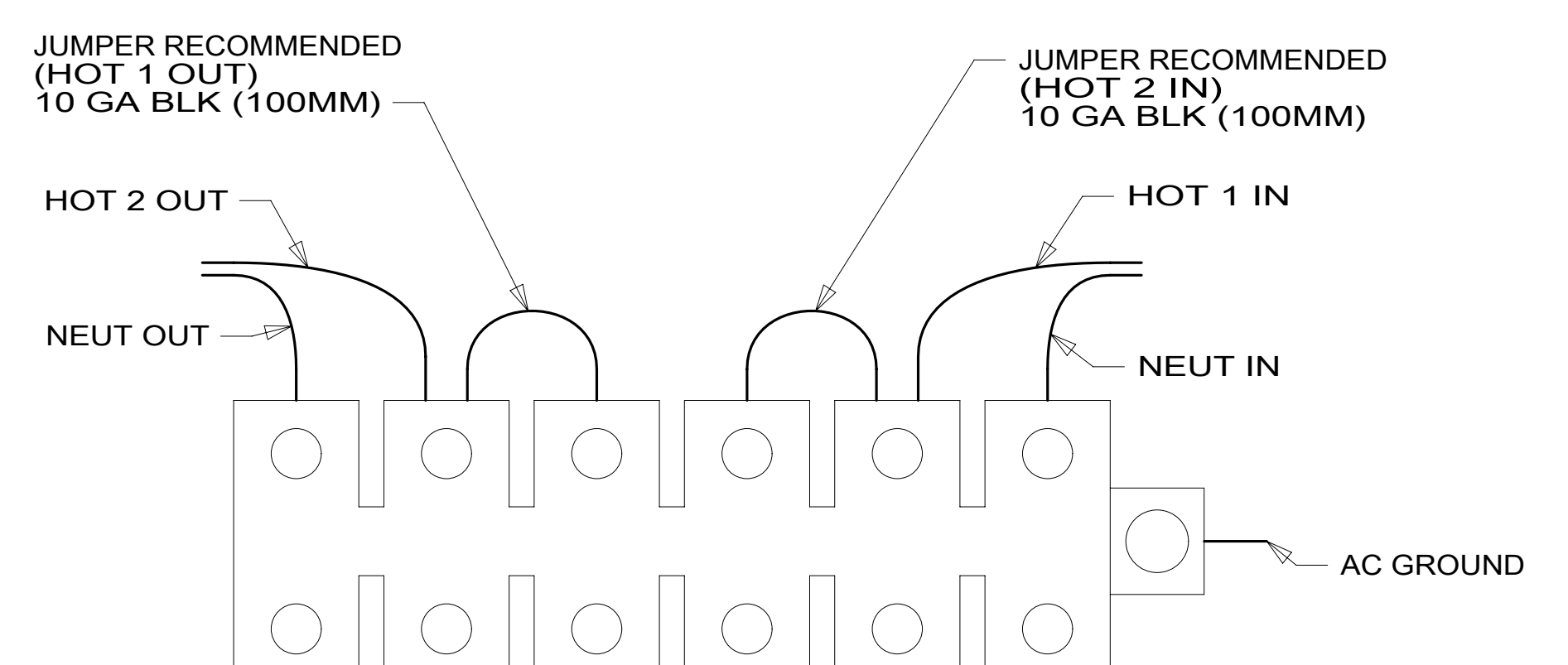
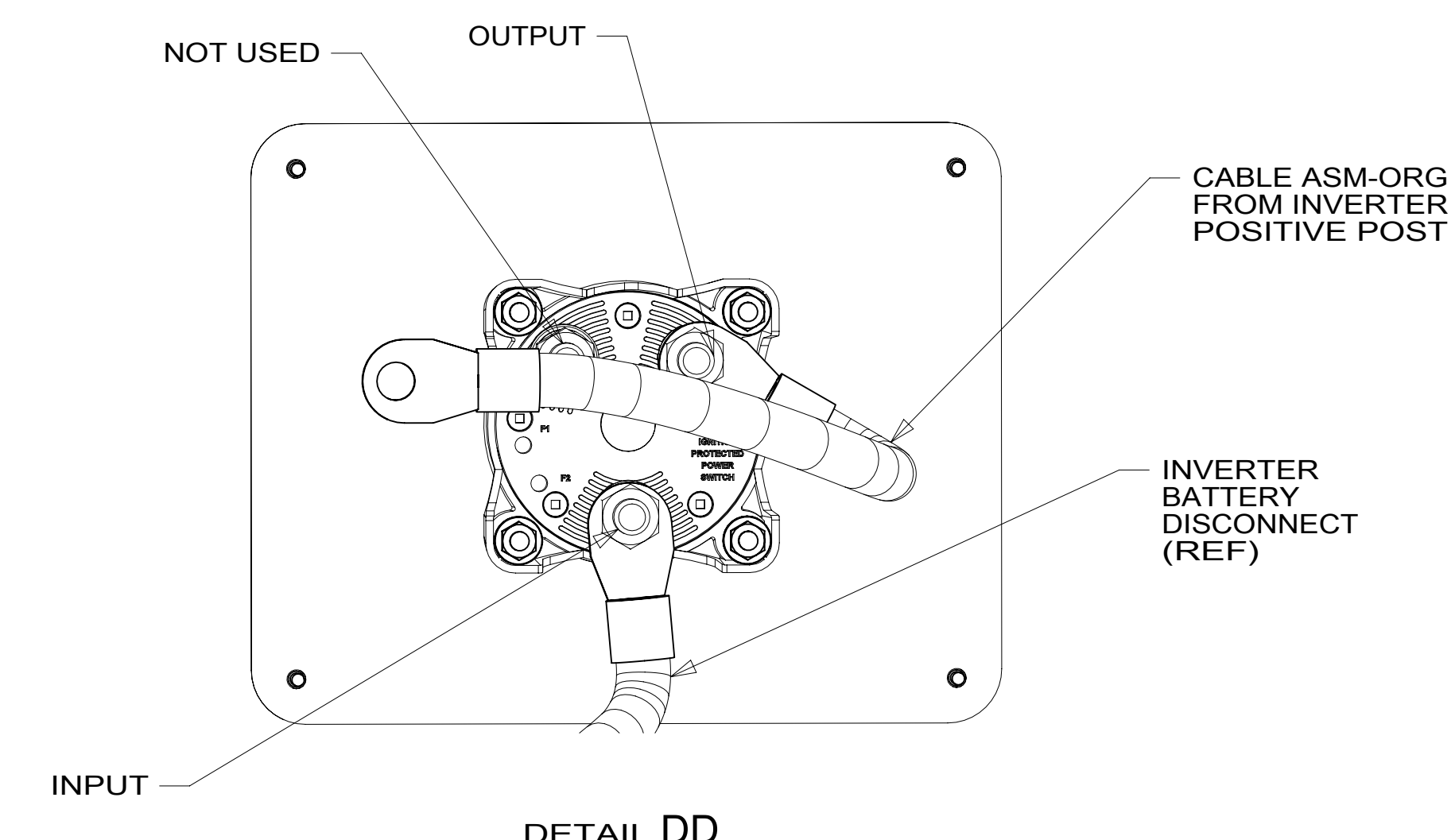
- 6 SEE WIRING INSTL-BODY, 12V FOR ADDITIONAL INFORMATION.
- 5 WIRE ROUTED IN ROOF.
- 4 WIRE ROUTED IN SIDEWALL.
- 3 TO BELOW FLOOR.

- 2. ALL 110V WIRES TO BE CLAMPED WITH CLAMP 10497-05-000 WITHIN 200MM OF OUTLET BOXES, USE SCREW G67-10-12B.
- 1. AT MINIMUM ALL WIRES TO BE SUPPORTED AND SECURED PER CODE REQUIREMENTS. USE CLAMP 10495 OR 10497 OR WIRE TIE 8343 OR 108046 AND SCREW G67-XX-XXX OR G56-XX-XXX AS APPROPRIATE FOR INSTALLATION.

DESCRIPTION: WIRING INSTL-BODY, 110V	
SHEET: 3 OF 6	ITEM/PART NO.: 000209110 / 30207301000
REV	



VIEW DA



- 4 SEE LOAD CENTER/ATS ASM FOR ADDITIONAL INFORMATION.
- 3 DO NOT USE POWER/AIR TOOL TO INSTALL NUT. TORQUE TO 10-12 FT LBS.
- 2 SEE WIRING INSTL-CHASSIS FOR ADDITIONAL INFORMATION.

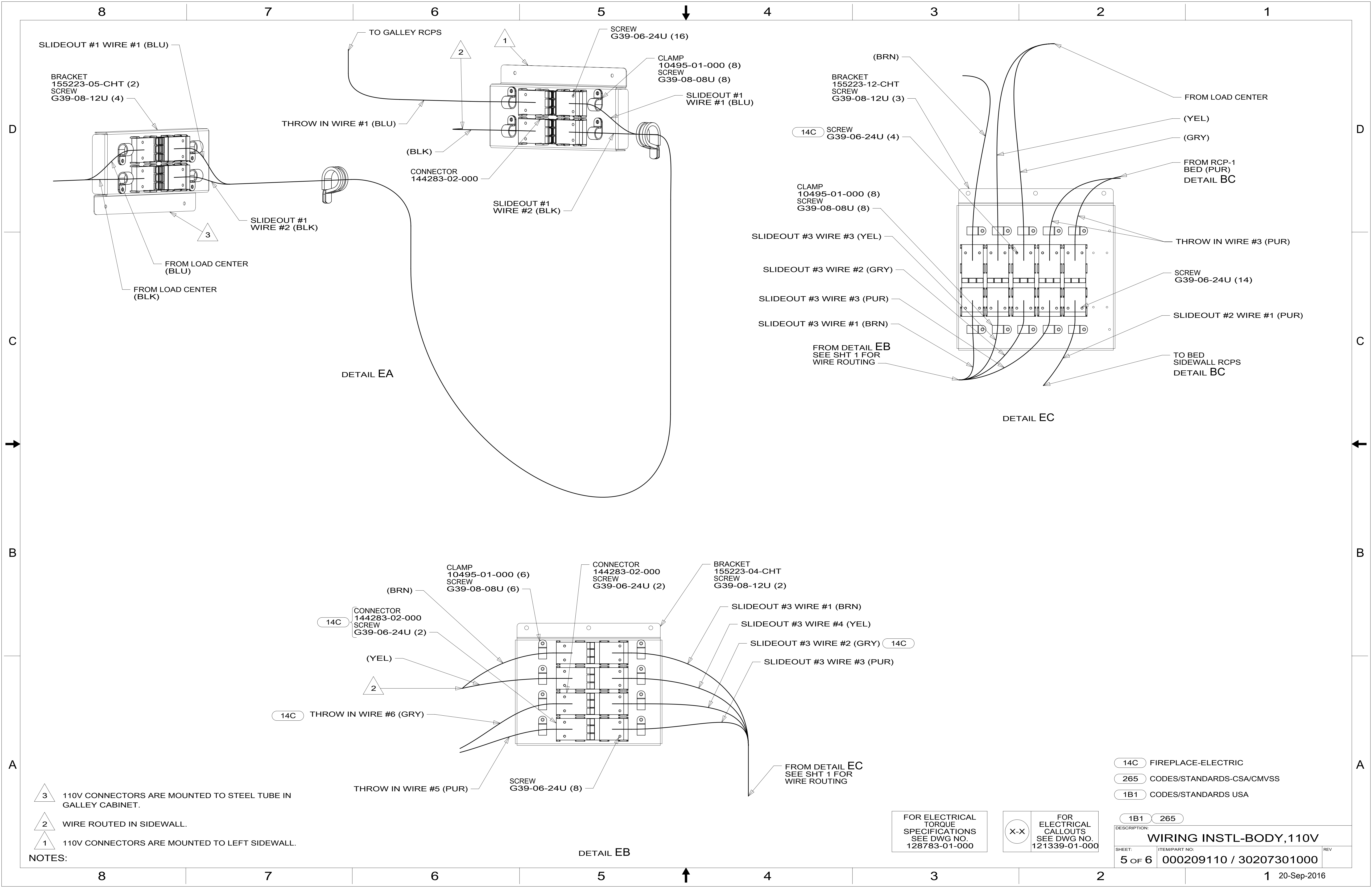
NOTES:
1. WIRE MUST BE ROUTED THROUGH CLAMPS AS SHOWN.

FOR ELECTRICAL TORQUE SPECIFICATIONS SEE DWG NO. 128783-01-000

FOR ELECTRICAL CALLOUTS SEE DWG NO. 121339-01-000

- 265 CODES/STANDARDS-CSA/CMVSS
- 1B1 CODES/STANDARDS USA

DESCRIPTION: WIRING INSTL-BODY, 110V	
SHEET: 4 OF 6	ITEM/PART NO: 000209110 / 30207301000
REV	



SLIDEOUT #1 WIRE #1 (BLU)

BRACKET
155223-05-CHT (2)
SCREW
G39-08-12U (4)

THROW IN WIRE #1 (BLU)

SLIDEOUT #1
WIRE #2 (BLK)

FROM LOAD CENTER
(BLU)

FROM LOAD CENTER
(BLK)

DETAIL EA

SCREW
G39-06-24U (16)

CLAMP
10495-01-000 (8)
SCREW
G39-08-08U (8)

SLIDEOUT #1
WIRE #1 (BLU)

(BLK)

CONNECTOR
144283-02-000

SLIDEOUT #1
WIRE #2 (BLK)

(BRN)

BRACKET
155223-12-CHT
SCREW
G39-08-12U (3)

14C SCREW
G39-06-24U (4)

CLAMP
10495-01-000 (8)
SCREW
G39-08-08U (8)

SLIDEOUT #3 WIRE #3 (YEL)

SLIDEOUT #3 WIRE #2 (GRY)

SLIDEOUT #3 WIRE #3 (PUR)

SLIDEOUT #3 WIRE #1 (BRN)

FROM DETAIL EB
SEE SHT 1 FOR
WIRE ROUTING

DETAIL EC

FROM LOAD CENTER

(YEL)

(GRY)

FROM RCP-1
BED (PUR)
DETAIL BC

THROW IN WIRE #3 (PUR)

SCREW
G39-06-24U (14)

SLIDEOUT #2 WIRE #1 (PUR)

TO BED
SIDEWALL RCPS
DETAIL BC

CLAMP
10495-01-000 (6)
SCREW
G39-08-08U (6)

CONNECTOR
144283-02-000
SCREW
G39-06-24U (2)

BRACKET
155223-04-CHT
SCREW
G39-08-12U (2)

(BRN)

14C CONNECTOR
144283-02-000
SCREW
G39-06-24U (2)

(YEL)

2

14C THROW IN WIRE #6 (GRY)

THROW IN WIRE #5 (PUR)

SCREW
G39-06-24U (8)

SLIDEOUT #3 WIRE #1 (BRN)

SLIDEOUT #3 WIRE #4 (YEL)

SLIDEOUT #3 WIRE #2 (GRY) 14C

SLIDEOUT #3 WIRE #3 (PUR)

FROM DETAIL EC
SEE SHT 1 FOR
WIRE ROUTING

DETAIL EB

3 110V CONNECTORS ARE MOUNTED TO STEEL TUBE IN GALLEY CABINET.

2 WIRE ROUTED IN SIDEWALL.

1 110V CONNECTORS ARE MOUNTED TO LEFT SIDEWALL.

NOTES:

14C FIREPLACE-ELECTRIC

265 CODES/STANDARDS-CSA/CMVSS

1B1 CODES/STANDARDS USA

1B1 265

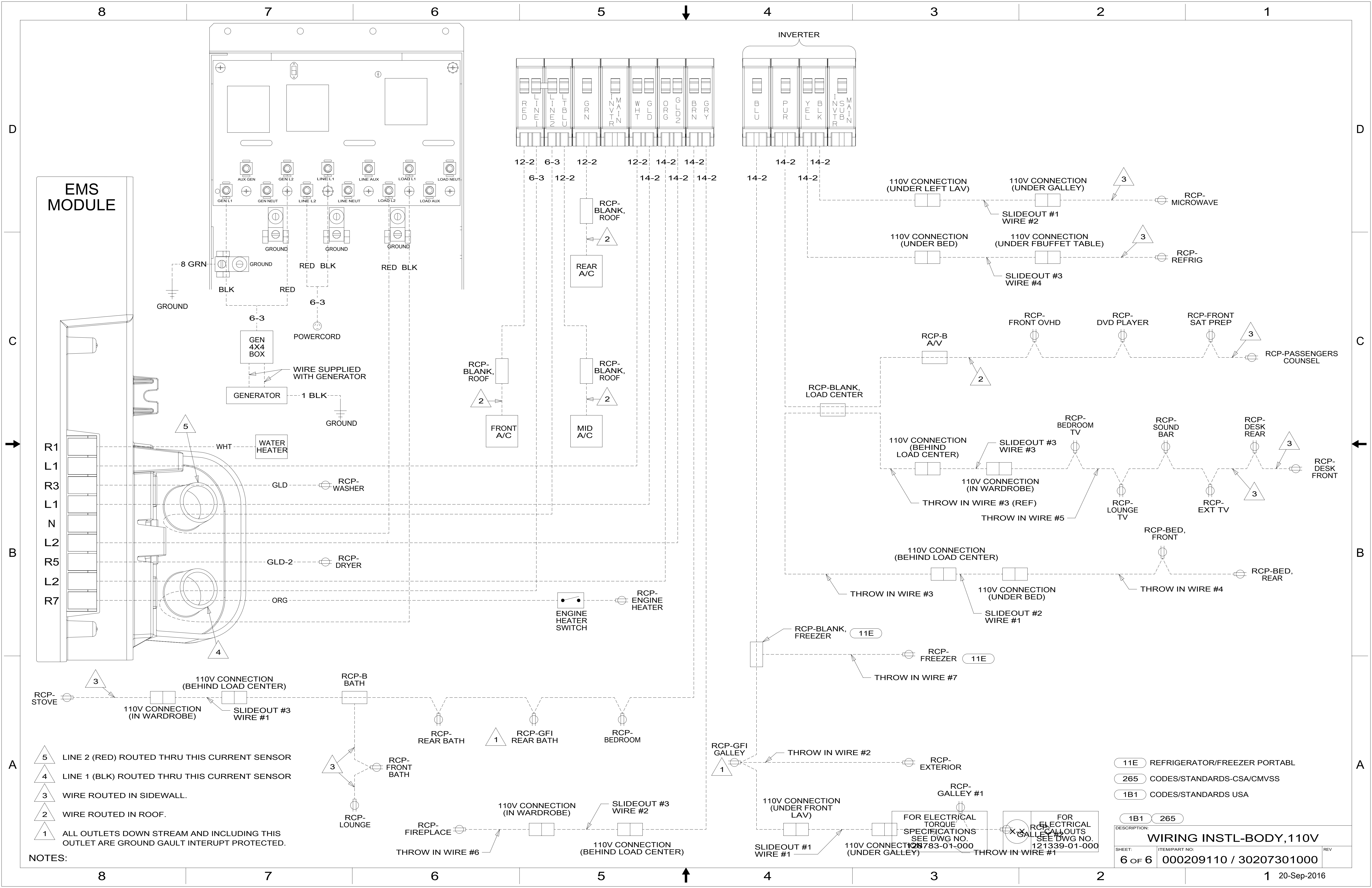
FOR ELECTRICAL
TORQUE
SPECIFICATIONS
SEE DWG NO.
128783-01-000

FOR ELECTRICAL
CALLOUTS
SEE DWG NO.
121339-01-000

DESCRIPTION:
WIRING INSTL-BODY, 110V

SHEET: 5 OF 6 ITEM/PART NO: 000209110 / 30207301000 REV

1 20-Sep-2016



EMS MODULE

- NOTES:**
- 5 LINE 2 (RED) ROUTED THRU THIS CURRENT SENSOR
 - 4 LINE 1 (BLK) ROUTED THRU THIS CURRENT SENSOR
 - 3 WIRE ROUTED IN SIDEWALL.
 - 2 WIRE ROUTED IN ROOF.
 - 1 ALL OUTLETS DOWN STREAM AND INCLUDING THIS OUTLET ARE GROUND GAULT INTERRUPT PROTECTED.

11E	REFRIGERATOR/FREEZER PORTABL
265	CODES/STANDARDS-CSA/CMVSS
1B1	CODES/STANDARDS USA
1B1	265
DESCRIPTION: WIRING INSTL-BODY, 110V	
SHEET: 6 OF 6	ITEM/PART NO: 000209110 / 30207301000
REV 1 20-Sep-2016	

FOR ELECTRICAL TORQUE SPECIFICATIONS SEE DWG NO. 121339-01-000

FOR ELECTRICAL CALLOUTS SEE DWG NO. 121339-01-000