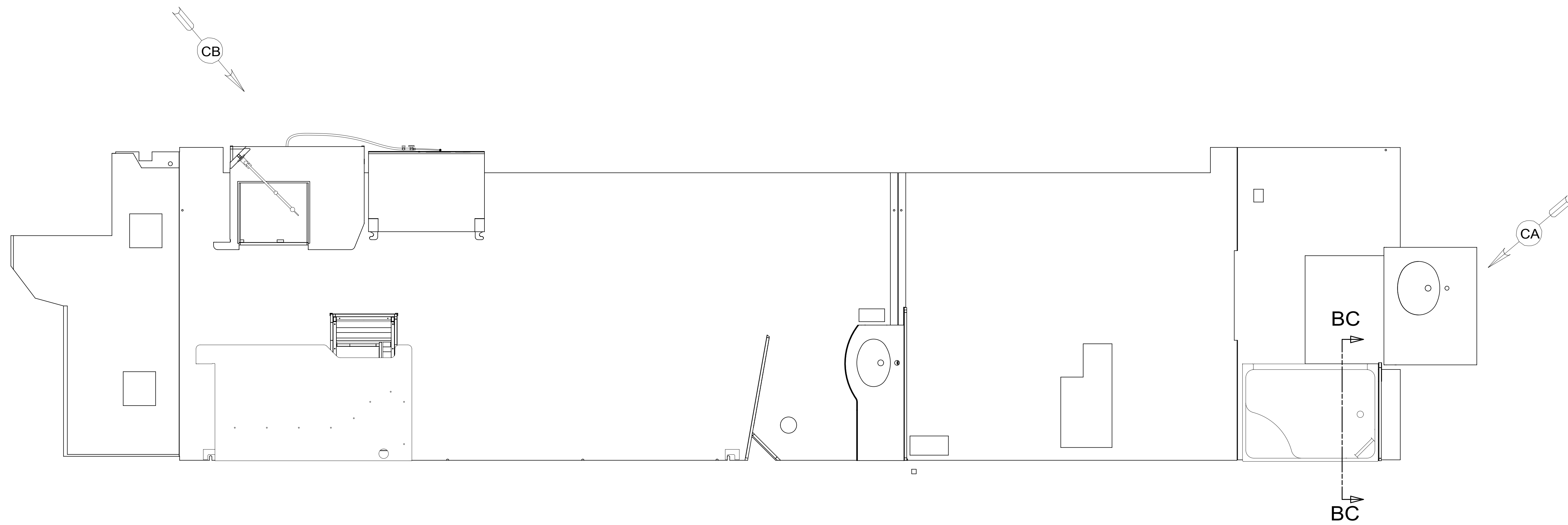
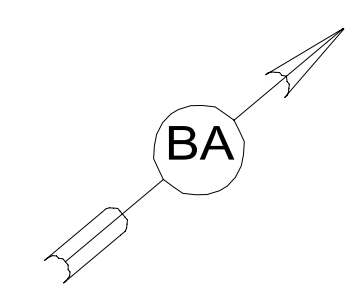


REV	ZONE	REVISION RECORD	DATE	DFTR-ORIG
A	---	INITIAL RELEASE	11/04/15	3660
B	S3CB	E-46 WAS A-27	07/13/16	3650-2314



- NOTES:
11. FOR INSTALLATION USE SILICON ADHESIVE 131264-05-CHT, APPLY ON TOP OF PLATE, PLACE COVER ON, AND PUT ADHESIVE AROUND COVER.
 10. INSTALL FAUCET W/OUT BASEPLATE.
 9. VALVE MUST REMAIN OPEN AFTER WATER TEST.
 8. ALL CRIMP FITTINGS TO 1/2" PEX TUBING REQUIRE 1/2" CLAMP 140171-03-000.
 7. ALL CRIMP FITTINGS TO 5/8" PEX TUBING REQUIRE 5/8" CLAMP 140171-04-000.
 6. LABEL HOT AND COLD SUPPLY TUBES AND TAPE FITTING TO TUBE BEFORE CABINET SET TO PREVENT MOVEMENT.
 5. ADD PIPE WRAP (LADDER SCRAP 110157-02-000) INSULATION.
 4. ADD TEFLON TAPE 010405-02-000.
 3. ALL TUBING TO BE SECURED AT 1200 INTERVALS MAXIMUM WITH CLAMP 010495-01-000 AND SCREW 000G67-10-12U OR EQUIVALENT.
 2. TUBING TO BE INSTALLED WITH SUFFICIENT SLOPE TO PROVIDE DRAINAGE TO NEAREST VALVE.
 1. PLASTIC FITTINGS TO BE SEALED WITH SEALANT 084456-01-000.

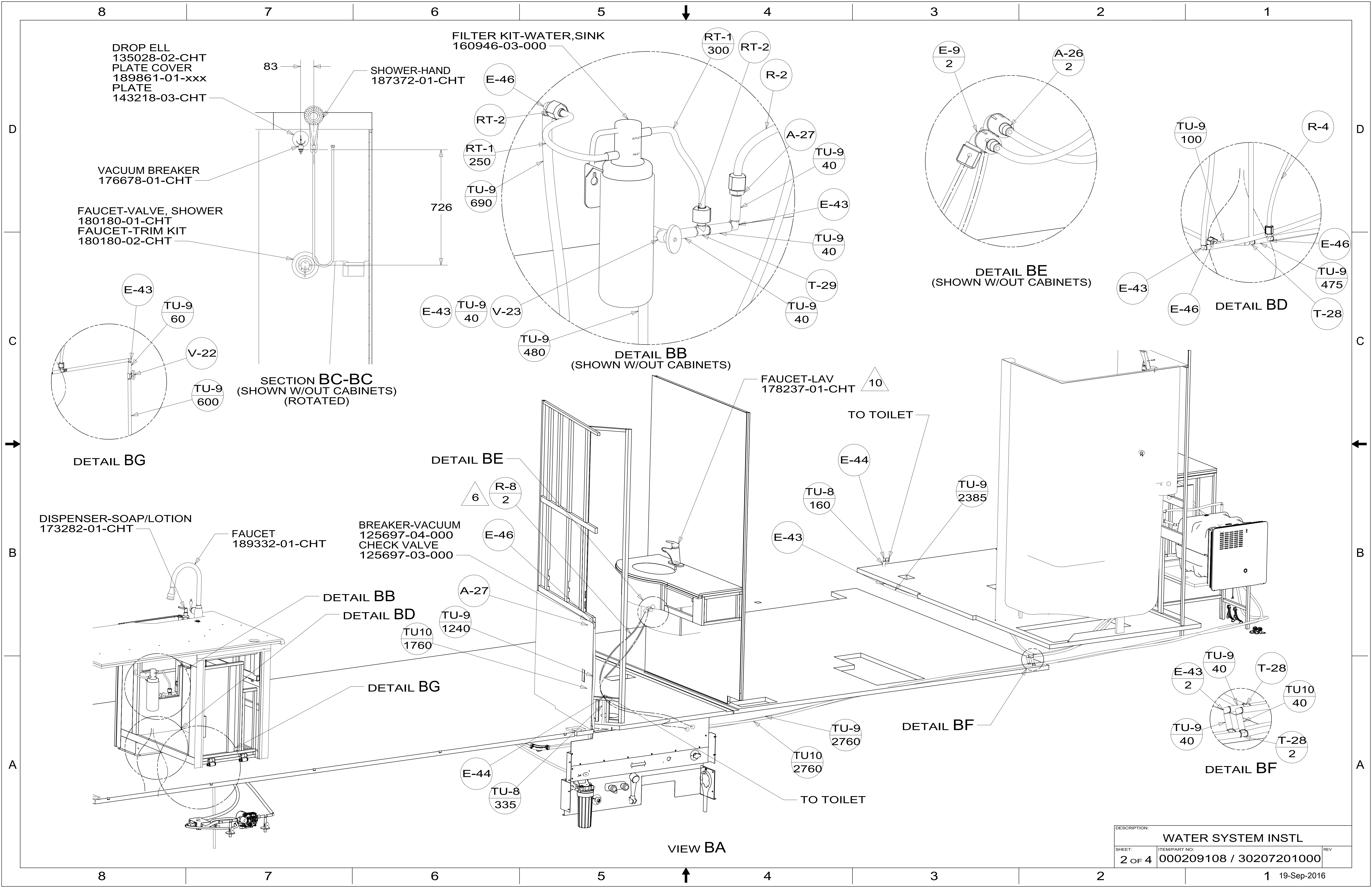


- 1BT WATER HEATER, TANKLESS
- 1B2 WTR HTR-10GAL/ELEC/LP/MTRAIID
- 21S WASHER & DRYER-PAIR
- 21M WASHER/DRYER PREP

X-X
FOR WATER CALLOUTS SEE DWG NO. 116230-01-000

WINNEBAGO
COPYRIGHT 2016 WINNEBAGO INDUSTRIES, INC.

DSNR:	ALL DIMENSIONS ARE IN MILLIMETERS	
DFTR:	MATERIAL:	
UNSPECIFIED TOLERANCES:	WHOLE DIM (X) :	3
	ONE-PLACE (X.X) :	1.5
	TWO-PLACE (X.XX) :	0.50
	ANGLE :	1°
REFER TO ES0018 FOR FASTENER TIGHTENING GUIDELINES	WEIGHT: (LBS)	FIRST USED: (REF)
		16 P40R
DESCRIPTION: WATER SYSTEM INSTL		
SHEET: 1 OF 4	ITEM/PART NO: 000209108 / 30207201000	REV:



DROP ELL
135028-02-CHT
PLATE COVER
189861-01-xxx
PLATE
143218-03-CHT

SHOWER-HAND
187372-01-CHT

FILTER KIT-WATER,SINK
160946-03-000

VACUUM BREAKER
176678-01-CHT

FAUCET-VALVE, SHOWER
180180-01-CHT
FAUCET-TRIM KIT
180180-02-CHT

SECTION BC-BC
(SHOWN W/OUT CABINETS)
(ROTATED)

DETAIL BB
(SHOWN W/OUT CABINETS)

DETAIL BE
(SHOWN W/OUT CABINETS)

DETAIL BD

DETAIL BG

DETAIL BE

TO TOILET

DISPENSER-SOAP/LOTION
173282-01-CHT

FAUCET
189332-01-CHT

BREAKER-VACUUM
125697-04-000
CHECK VALVE
125697-03-000

DETAIL BB

DETAIL BD

DETAIL BG

DETAIL BF

DETAIL BF

VIEW BA

TO TOILET

DESCRIPTION: WATER SYSTEM INSTL		
SHEET: 2 OF 4	ITEM/PART NO: 000209108 / 30207201000	REV

8

7

6

5

4

3

2

1

BRACKET
143101-01-CHT

N-1

E-29

TU10
685

E-10

E-44

E-46
2

TU10
2260

TU-9
2210

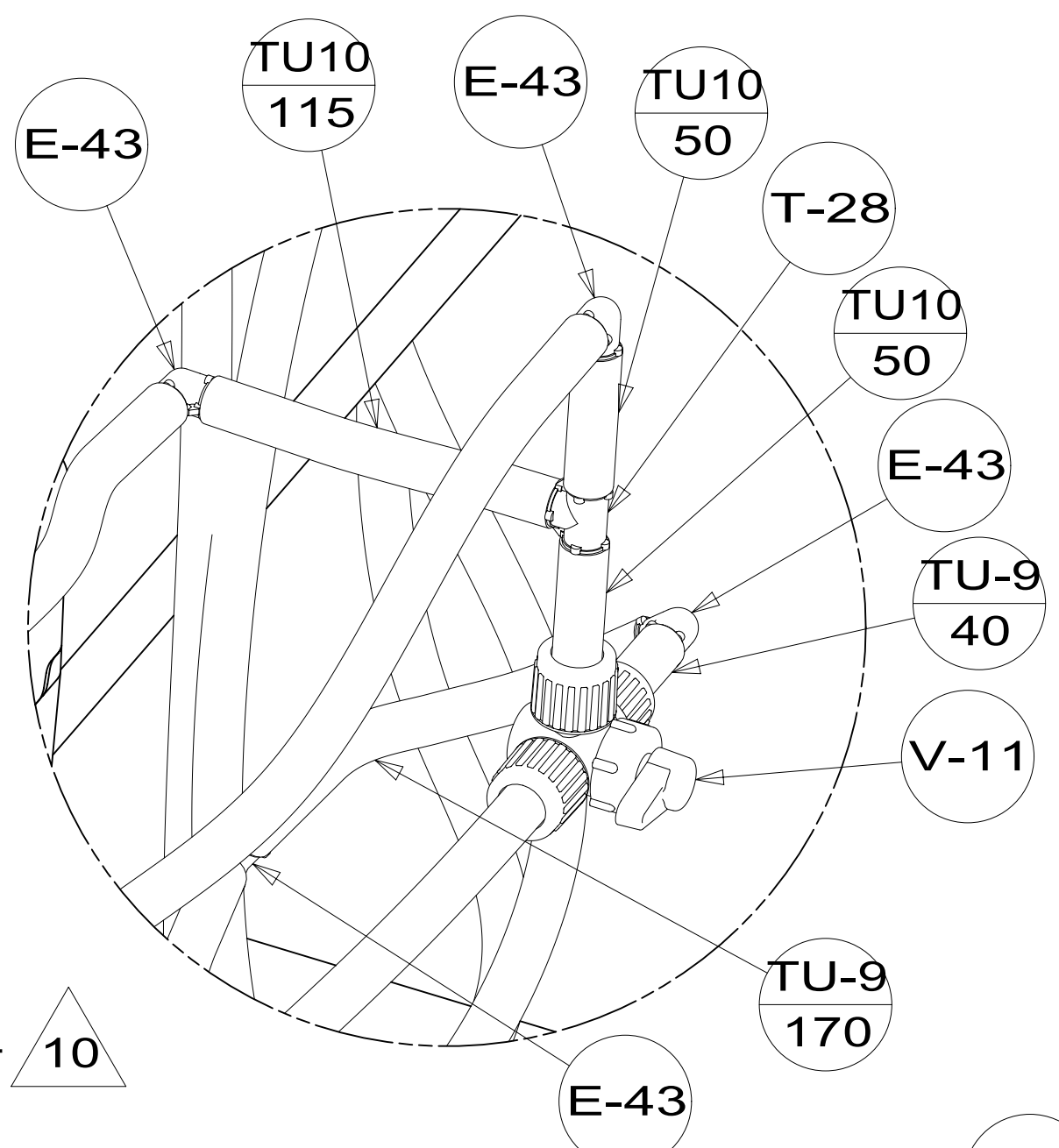
DETAIL CC

PLATFORM ASM
181266-01-000

FAUCET-POT FILLER
187172-01-CHT

N-1

E-9



FAUCET-LAV
178237-01-CHT 10

DETAIL CE
(SHOWN W/OUT BRACKET AND CABINETS)
1B2

WATER HEATER INSTL-TANKLESS
186899-07-000

I-3

I-1

I-2

TU-5
250

V-24

TU-9
40

TU-9
40

TU-9
100

V-22
9

T-28

140821-12-000
VIEW CB

A-27

TU-9
40

TU-9
1065

R-7

E-46

WATER HEATER INSTL
186899-01-000
CABLE ASM
076767-03-000
SCREW
000G39-08-08U (2)

4

E-44

VIEW CA

TU10
165

DETAIL CD

DETAIL CE

BRACKET-VALVE
159640-01-CHT

TU10
115

E-43

E-43

TU-9
65

T-28

T-28

TU-9
2730

TU-9
630

DETAIL CC
(SHOWN W/OUT CABINETS)
1B2

TU10
2975

V-6
4

E-44

TU-9
150

TU-9
400

TU-9
400

TU-9
190

A-28

TU-9
245

TU-9
60

T-28

TU-9
2745

DETAIL CC
(SHOWN W/OUT CABINETS)
1BT

TU10
2735

E-43

TU10
225

TU10
320

TU10
615

TU-9
635

TU10
225

A-28

E-43

E-43

E-43

TU-9
40

TU10
40

T-28

TU10
50

DETAIL CD

A-28

TU-9
50

PL-4
2

21M

A-28

A-26

A-27
2

DETAIL CD

BRACKET-FAUCET, WASHER
134472-05-CHT (2)

21S

DESCRIPTION:		
WATER SYSTEM INSTL		
SHEET:	ITEM/PART NO.:	REV
3 OF 4	000209108 / 30207201000	

