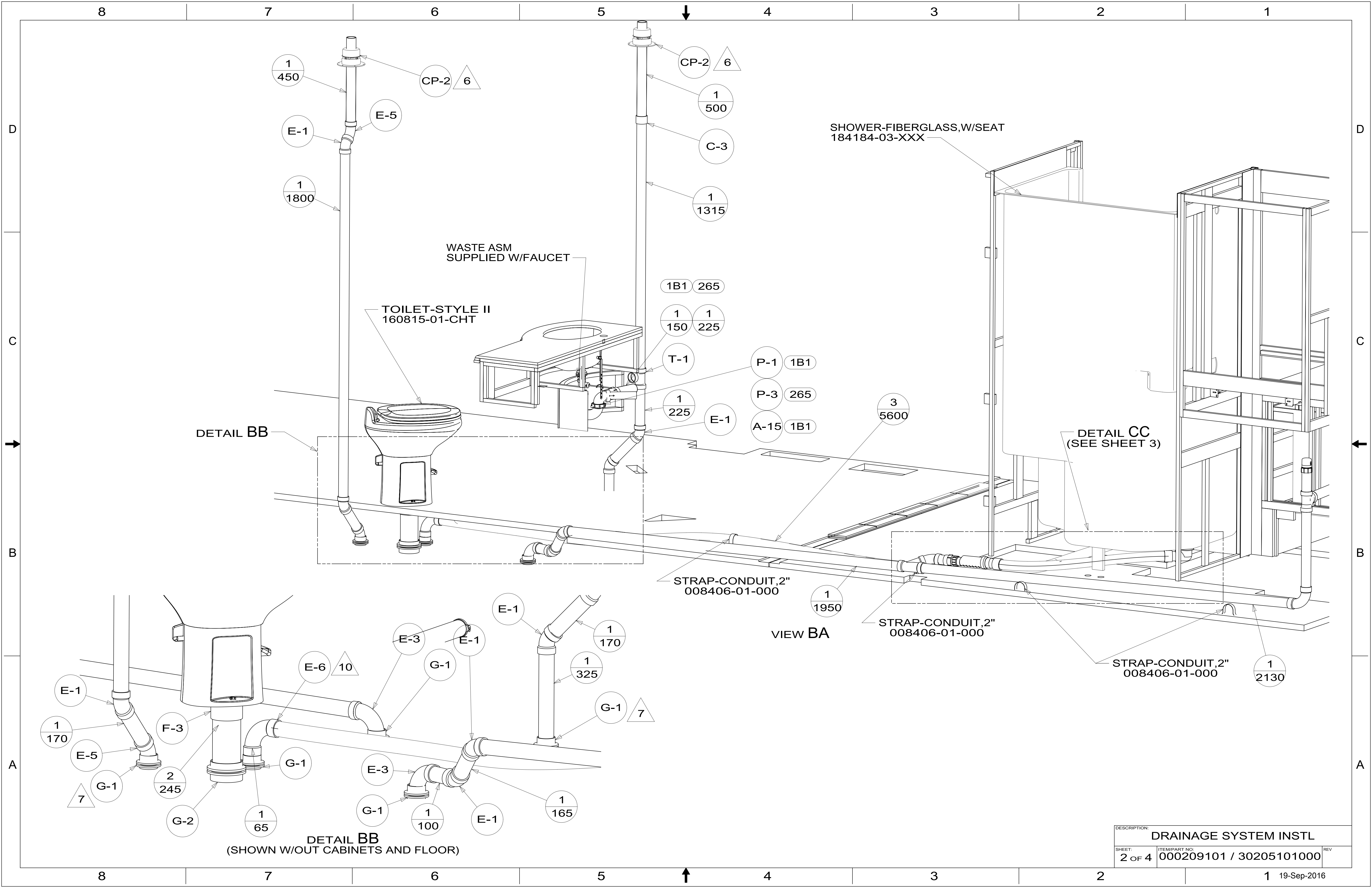


- NOTES:**
- 11. REQUIRES 5 GALLONS RV ANTIFREEZE 182955-01-000 PER TOLIET. FOLLOW TECMA TOLIET WINTERIZATION PROCEDURE.
 - 10. APPLY PRIMER 126427-02-000 AND CEMENT 126427-01-000 BETWEEN ELBOW AND FLEX PIPE.
 - 9. SEE DRAWING 061607 FOR INSTALLATION OF GROMMETS.
 - 8. SECURE DRAINAGE PIPES TO CABINET USING WIRE TIE 108046-02-000, AND SCREW 000G67-10-12U AT INTERVALS OF NOT OF NOT MORE THAN 4 FEET APART.
 - 7. SECURE VENT PIPE TO GROMMET WITH CLAMP 062401-02-000.
 - 6. VENT PIPE MUST PROJECT 51 MIN AND 64 MAX ABOVE ROOF FOR PROPER FIT AND FUNCTION. ADD S-1 (116666-01-CHT SEAL-VENT PIPE) AROUND PIPE ON ROOF BEFORE VENT CAP IS INSTALLED.
 - 5. SEAL AROUND SHOWER WITH SILICONE.
 - 4. USE SMOOTH PLUMBERS PUTTY 167459-01-000 TO SEAL STRAINER (0.2 PER STRAINER).
 - 3. ALL PIPE AND FITTINGS TO BE ASSEMBLED WITH SOLVENT 004020-01-000 (USA), 004020-02-000 (CAN)
 - 2. SLOPE OF TRAP ARM MUST BE 6 PER 305 mm.
 - 1. SLOPE OF HORIZONTAL PIPING TO BE MINIMUM OF 3 PER 305 mm.

- 21S WASHER/DRYER STACKED
- 1B1 CODES/STANDARDS USA
- 265 CODES/STDS-CSA,CMVSS
- 21M WASHER/DRYER PREP

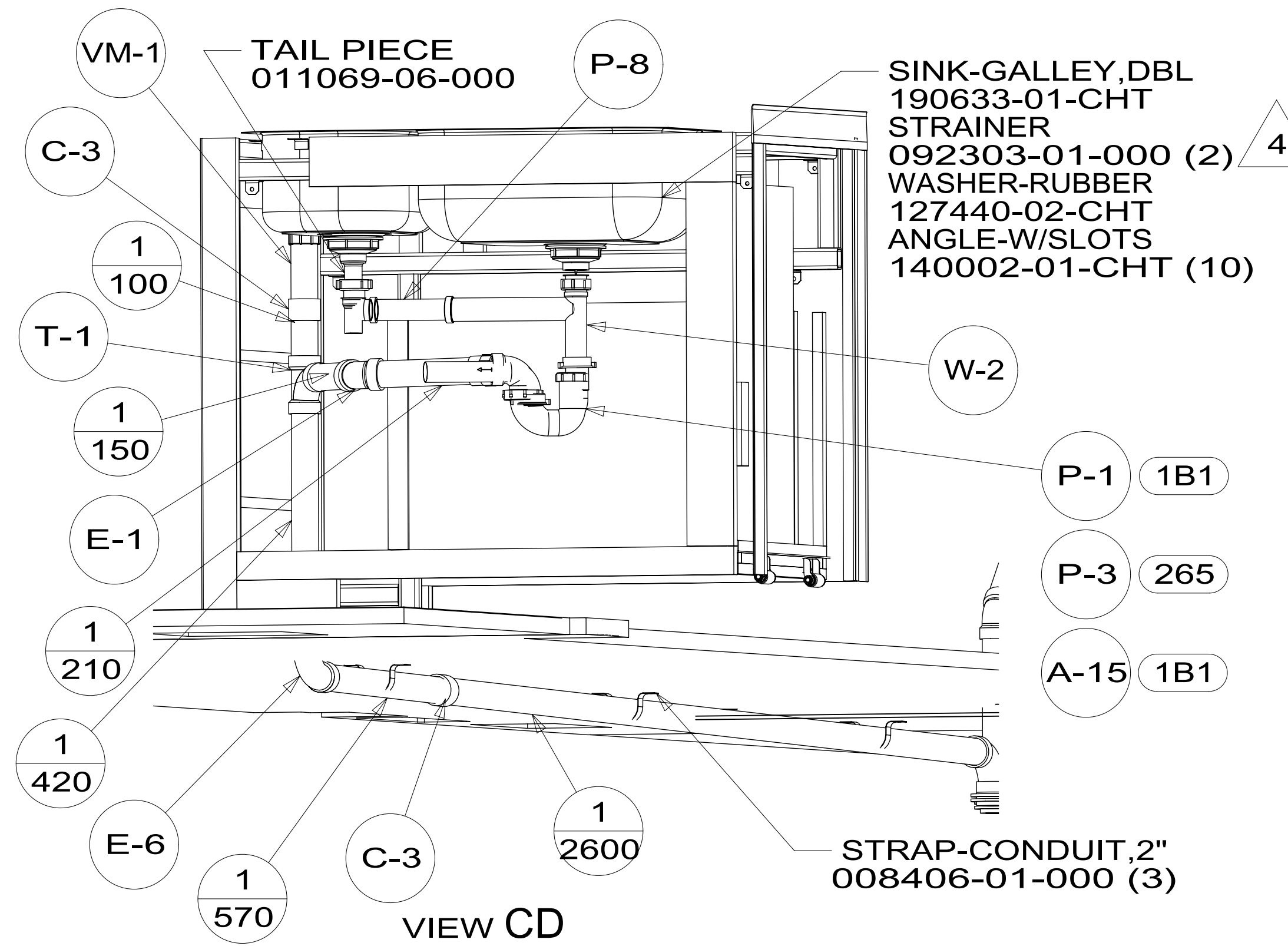
WINNEBAGO[®]
COPYRIGHT 2016 WINNEBAGO INDUSTRIES, INC.

DSNR:		ALL DIMENSIONS ARE IN MILLIMETERS			
DIFTR:					
UNSPECIFIED TOLERANCES:	MATERIAL:				
WHOLE DIM (X) :	3				
ONE-PLACE (X.X) :	1.5				
TWO-PLACE (X.XX) :	0.50				
ANGLE :	1°	WEIGHT: (LBS) FIRST USED: (REF)			
REFER TO ES0018 FOR FASTENER TIGHTENING GUIDELINES					
DESCRIPTION: DRAINAGE SYSTEM INSTL					
SHEET:	ITEM/PART NO:	REV			
1 OF 4	000209101 / 30205101000				
REF:		1 19-Sep-2016			

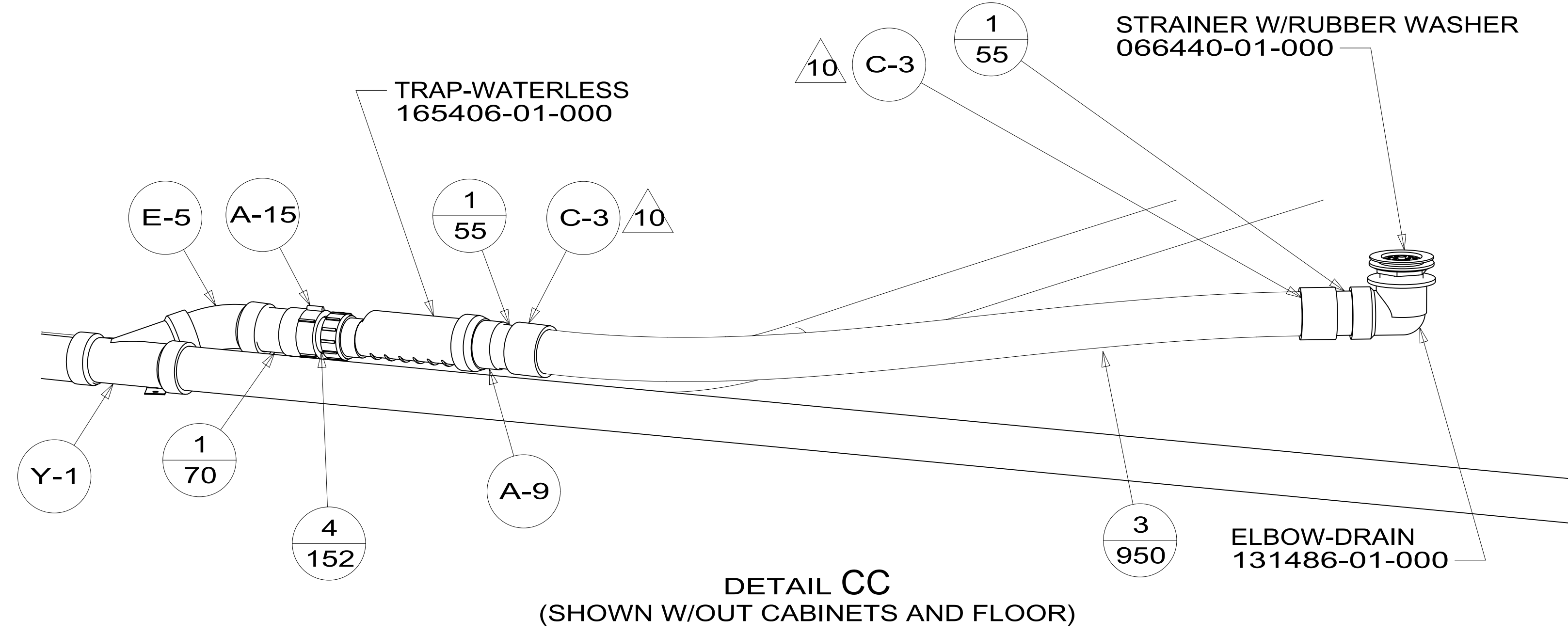


DESCRIPTION:		
DRAINAGE SYSTEM INSTL		
SHEET:	ITEM/PART NO.:	REV
2 OF 4	000209101 / 30205101000	

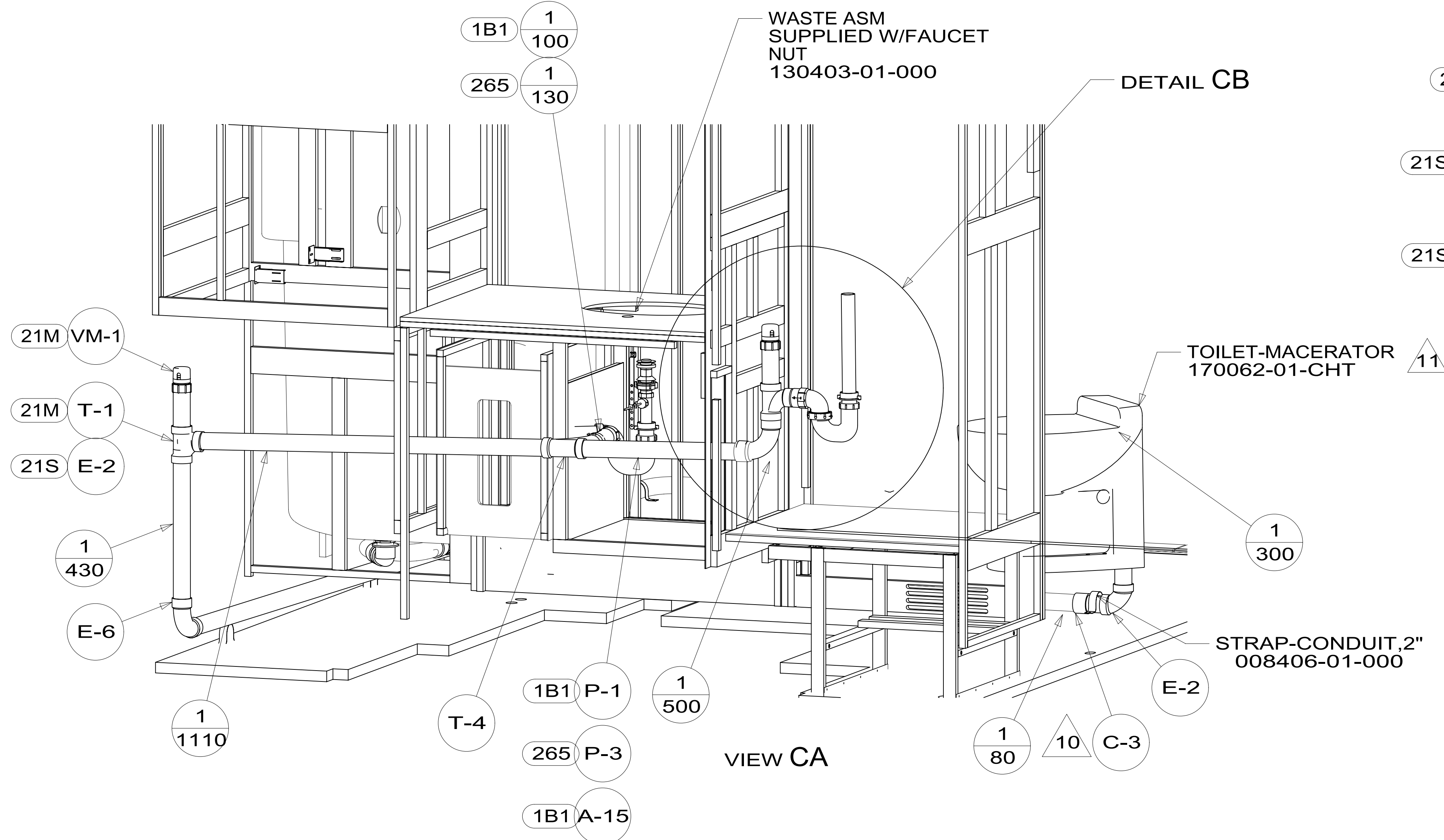
8 7 6 5 4 3 2 1



VIEW CD

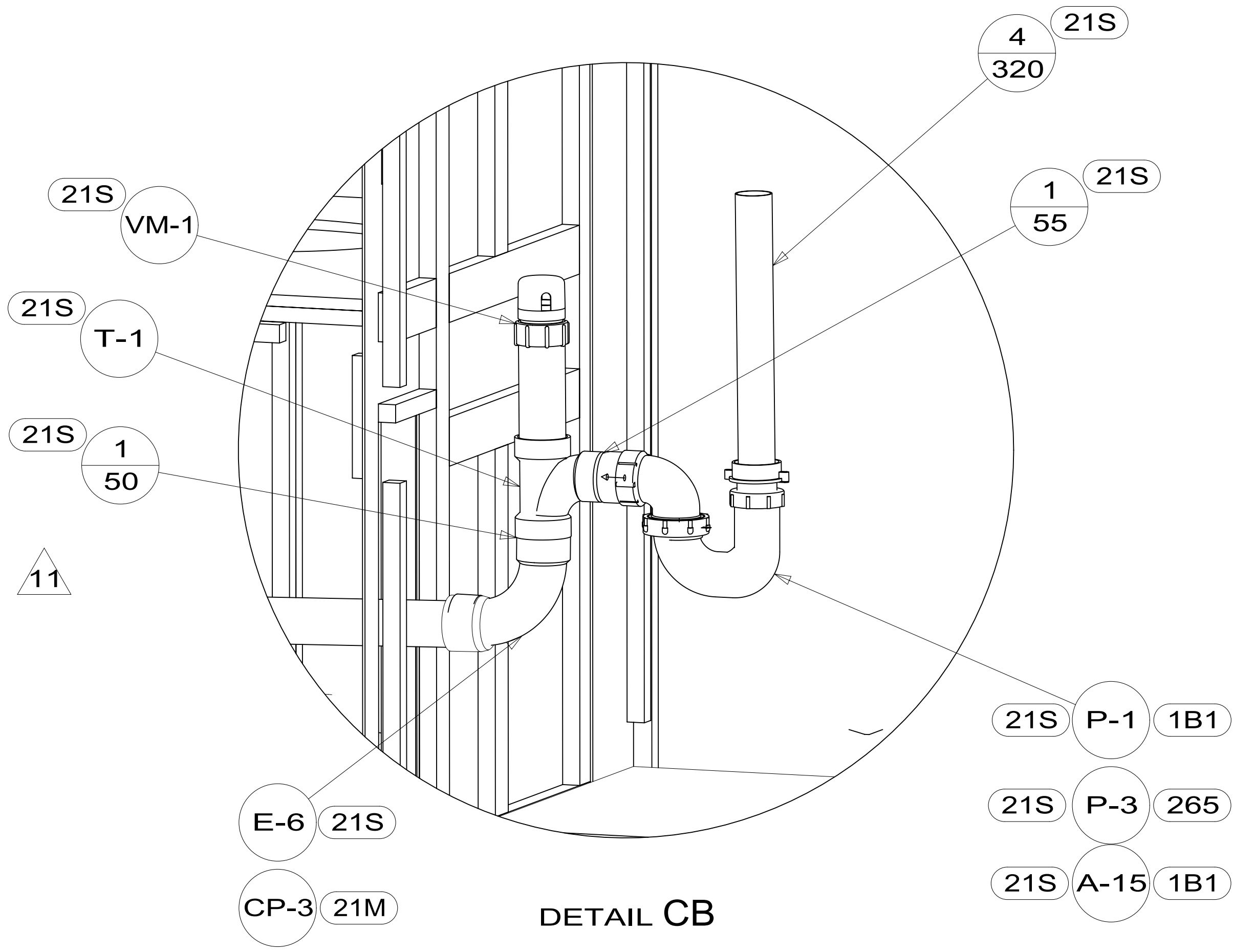


DETAIL CC
 (SHOWN W/OUT CABINETS AND FLOOR)



VIEW CA

DETAIL CB

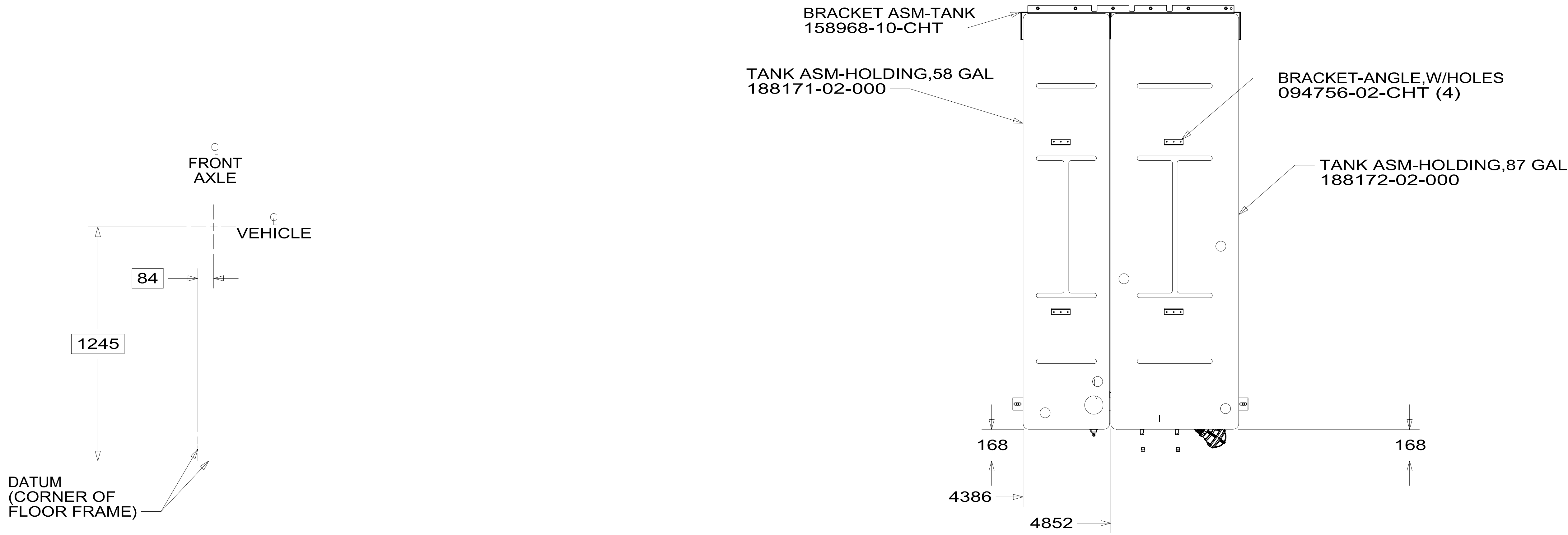


DETAIL CB

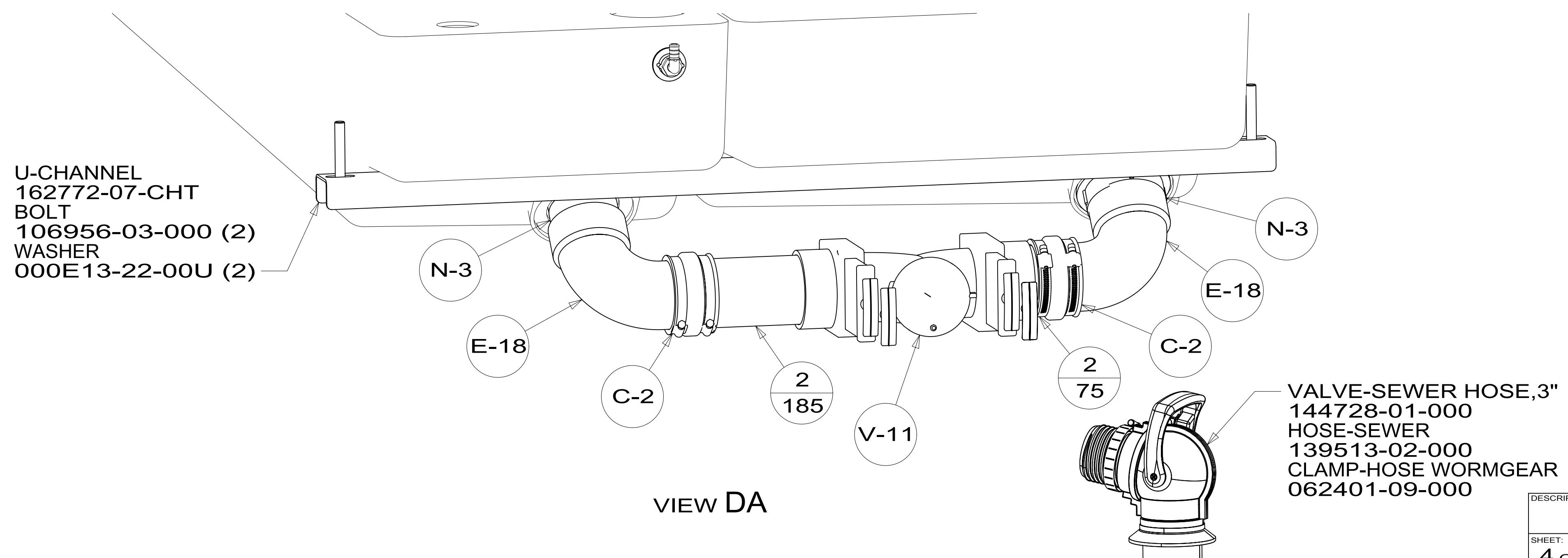
DESCRIPTION: DRAINAGE SYSTEM INSTL		
SHEET: 3 OF 4	ITEM/PART NO: 000209101 / 30205101000	REV
		1 19-Sep-2016

8 7 6 5 4 3 2 1

8 7 6 5 4 3 2 1



TOP VIEW SHOWING TANKS AND DRAINS



VIEW DA

DESCRIPTION: DRAINAGE SYSTEM INSTL		
SHEET: 4 OF 4	ITEM/PART NO: 000209101 / 30205101000	REV