

8 7 6 5 4 3 2 1

D

D

C

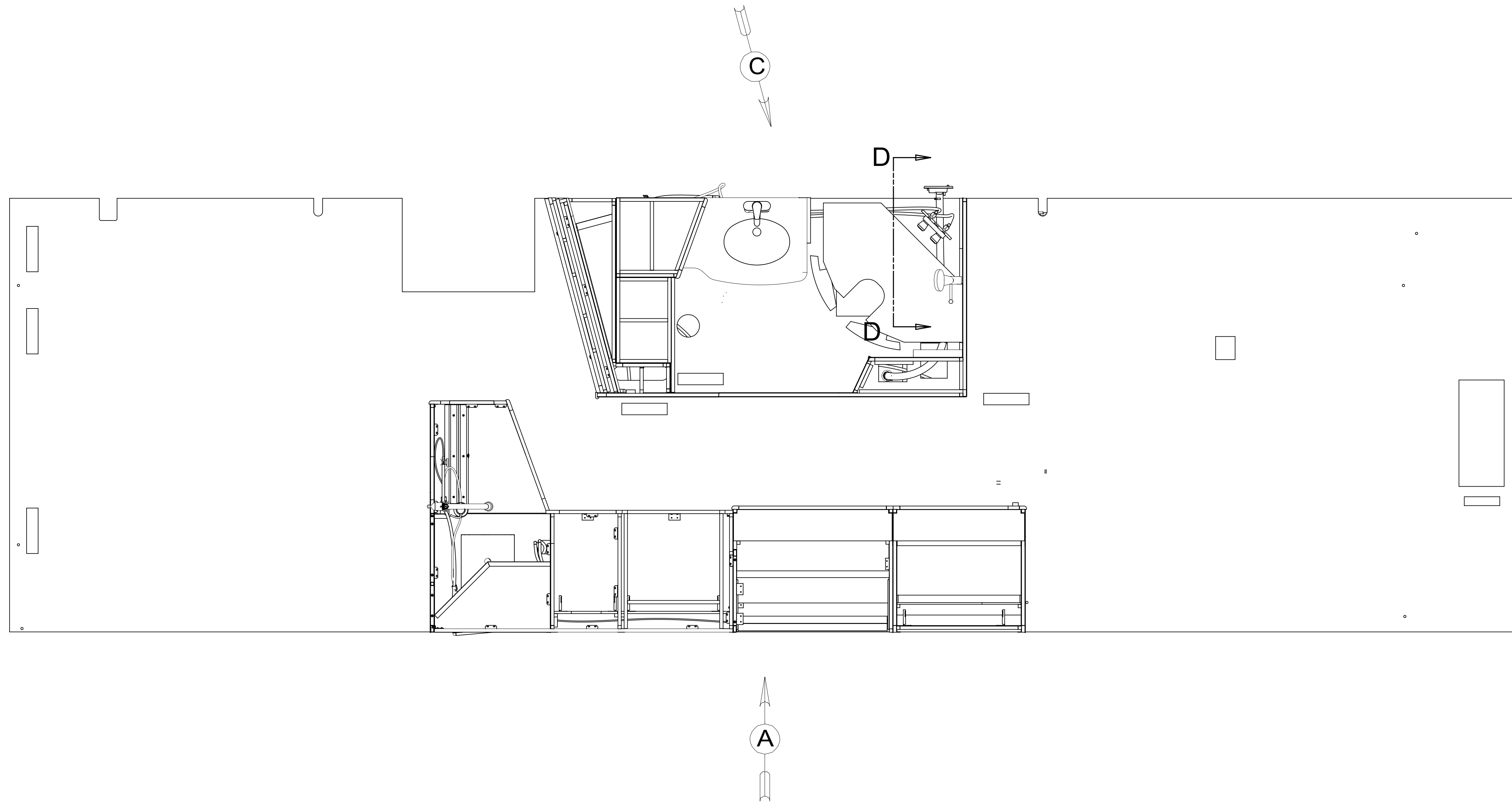
C

B

B

A

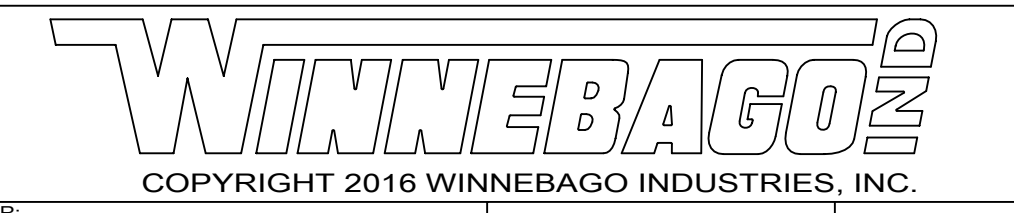
A



- 8. ALL CRIMP FITTINGS TO 1/2" PEX TUBING REQUIRE 1/2" CLAMP 140171-03-000.
- 7. ALL CRIMP FITTINGS TO 5/8" PEX TUBING REQUIRE 5/8" CLAMP 140171-04-000.
- 6. LABEL HOT AND COLD SUPPLY TUBES AND TAPE FITTING TO TUBE BEFORE CABINET SET TO PREVENT MOVEMENT.
- 5. ADD PIPE WRAP (LADDER SCRAP 110157-02-000) INSULATION.
- 4. ADD TEFLON TAPE 010405-02-000.
- 3. ALL TUBING TO BE SECURED AT 1200 INTERVALS MAXIMUM WITH CLAMP 010495-01-000 AND SCREW 000G67-10-12U OR EQUIVALENT.
- 2. TUBING TO BE INSTALLED WITH SUFFICIENT SLOPE TO PROVIDE DRAINAGE TO NEAREST VALVE.
- 1. PLASTIC FITTINGS TO BE SEALED WITH SEALANT 084456-01-000.

NOTES:

- 1BT WATER HEATER, TANKLESS
- 1B2 WTR HTR-10GAL/ELEC/LP/MTRAIID
- 21M WASHER/DRYER PREP
- 21S WASHER & DRYER-PAIR



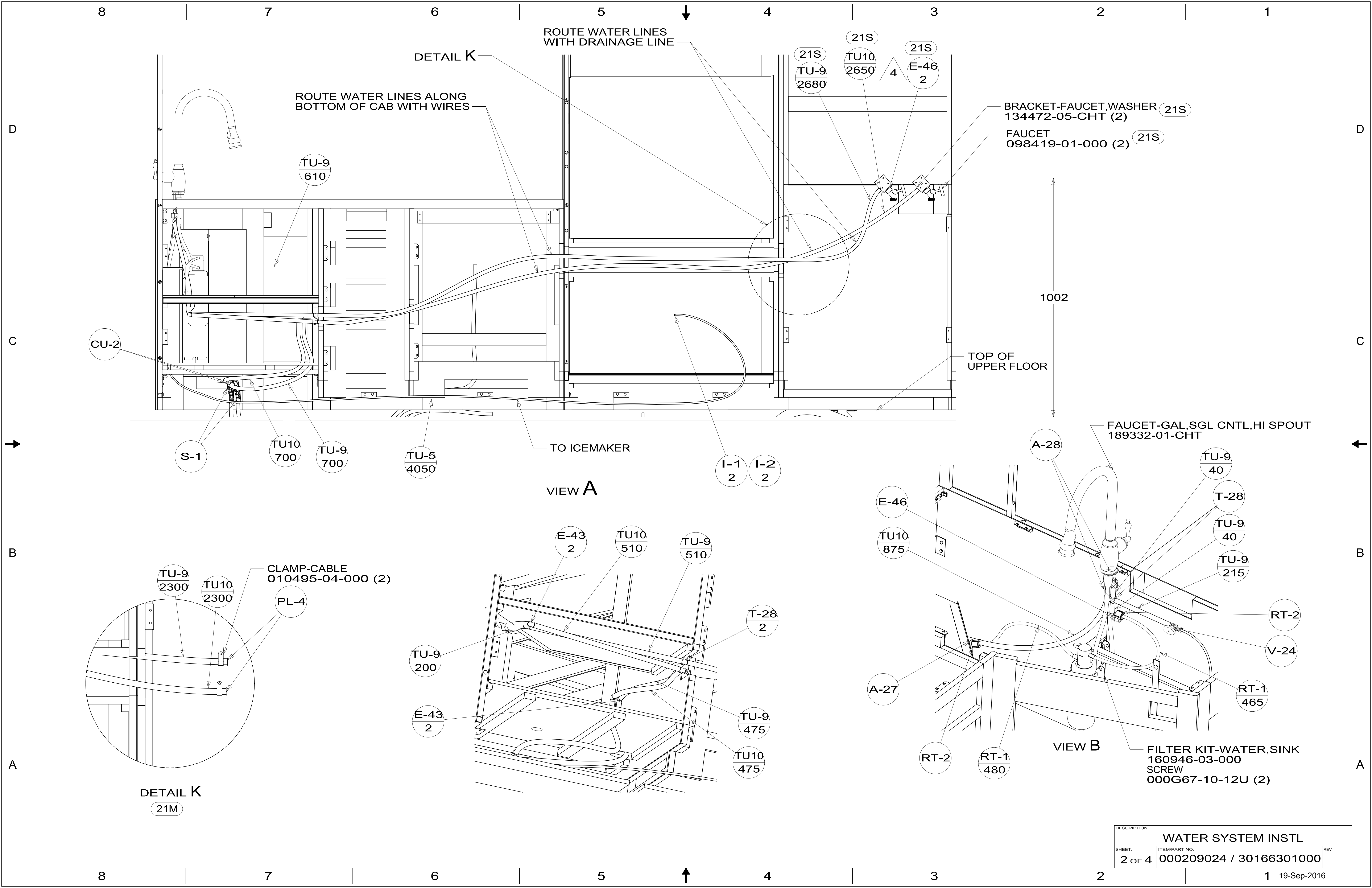
UNSPECIFIED TOLERANCES:		MATERIAL:	
WHOLE DIM (X)	3		
ONE-PLACE (X.X)	1.5		
TWO-PLACE (X.XX)	0.50		
ANGLE	1°		
REFER TO ES0018 FOR FASTENER TIGHTENING GUIDELINES		WEIGHT: (LBS)	FIRST USED: (REF)
DESCRIPTION: WATER SYSTEM INSTL			
SHEET: 1 OF 4	ITEM/PART NO: 000209024 / 30166301000	REV:	

X-X

FOR WATER CALLOUTS SEE DWG NO. 116230-01-000

8 7 6 5 4 3 2 1





DESCRIPTION:		
WATER SYSTEM INSTL		
SHEET:	ITEM/PART NO.:	REV
2 OF 4	000209024 / 30166301000	

8 7 6 5 4 3 2 1

D
C
B
A

PANEL-SHOWER
167738-02-CHT

4 E-44

TU-9
1570

TU10
1520

E-9

E-9

R-5

R-4

T-28

TU-9
605

TU10
610

E-21

VIEW C

DETAIL J

FAUCET-LAV
165730-01-CHT

E-46

BREAKER-VACUUM
125697-04-000
MUST BE MOUNTED ABOVE
TOILET FLOOD LEVEL
CHECK VALVE
125697-03-000 4

A-27

465 SHOWER-HAND
187372-01-CHT

220

F-2

SECTION D-D
(ROTATED)

TO TOILET

TU-9
3450

TU-9
1640

S-1

E-44

TU-8
675

T-28

T-29

TU-9
160

S-1

DETAIL J
(SHOWN W/OUT CABINET)

8 7 6 5 4 3 2 1

D
C
B
A

DESCRIPTION: WATER SYSTEM INSTL		
SHEET: 3 OF 4	ITEM/PART NO: 000209024 / 30166301000	REV

