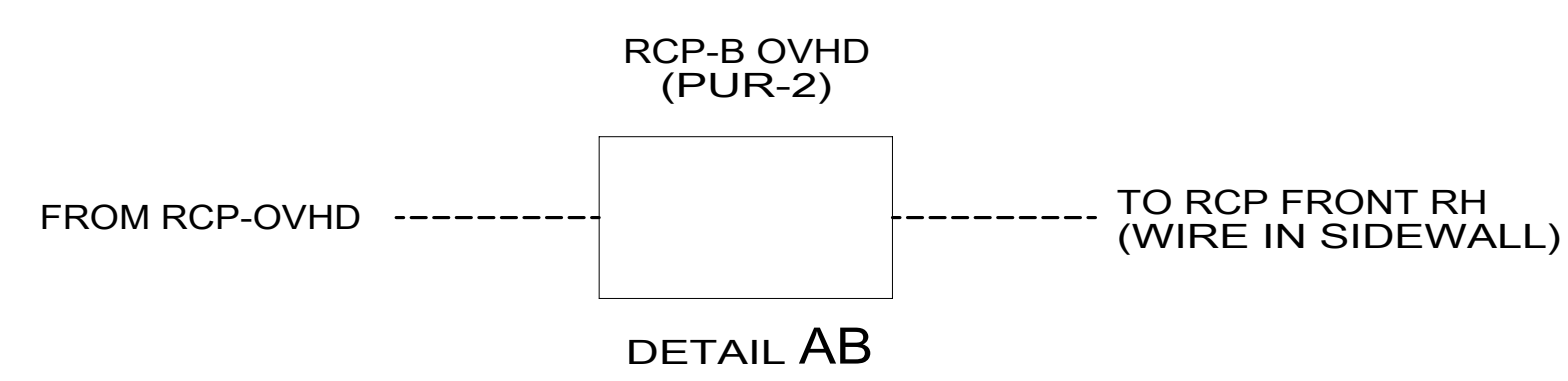


DETAIL AA (48P) (4)

- NOTES:**
- 110V WIRE TO BE CLAMPED WITH CLAMP 10497-05-000 WITHIN 200MM OF OUTLET BOXES, USE SCREW G67-10-12U.
  - ALL WIRES TO BE SECURED WITH CLAMP 10495-01-000 OR CLIP 80734-01-000 EVERY 600MM. USE SCREW G67-10-12U UNLESS OTHERWISE SPECIFIED.
  - WHERE WIRES PASS THROUGH HOLES IN STEEL AND NOT OTHERWISE PROTECTED, USE GROMMET 92908-02-000.



FOR ELECTRICAL TORQUE SPECIFICATIONS SEE DWG NO. 128783-01-000

FOR ELECTRICAL CALLOUTS SEE DWG NO. 121339-01-000

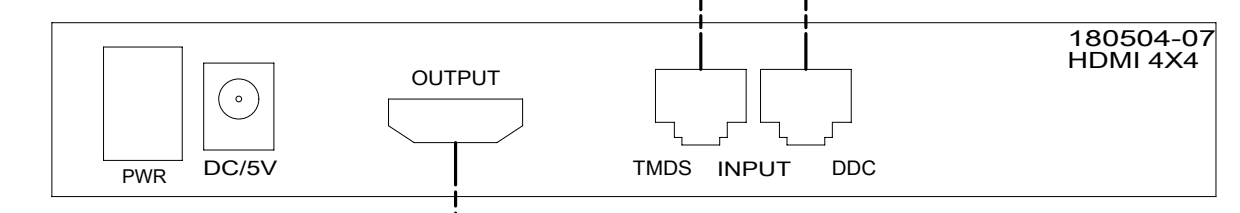
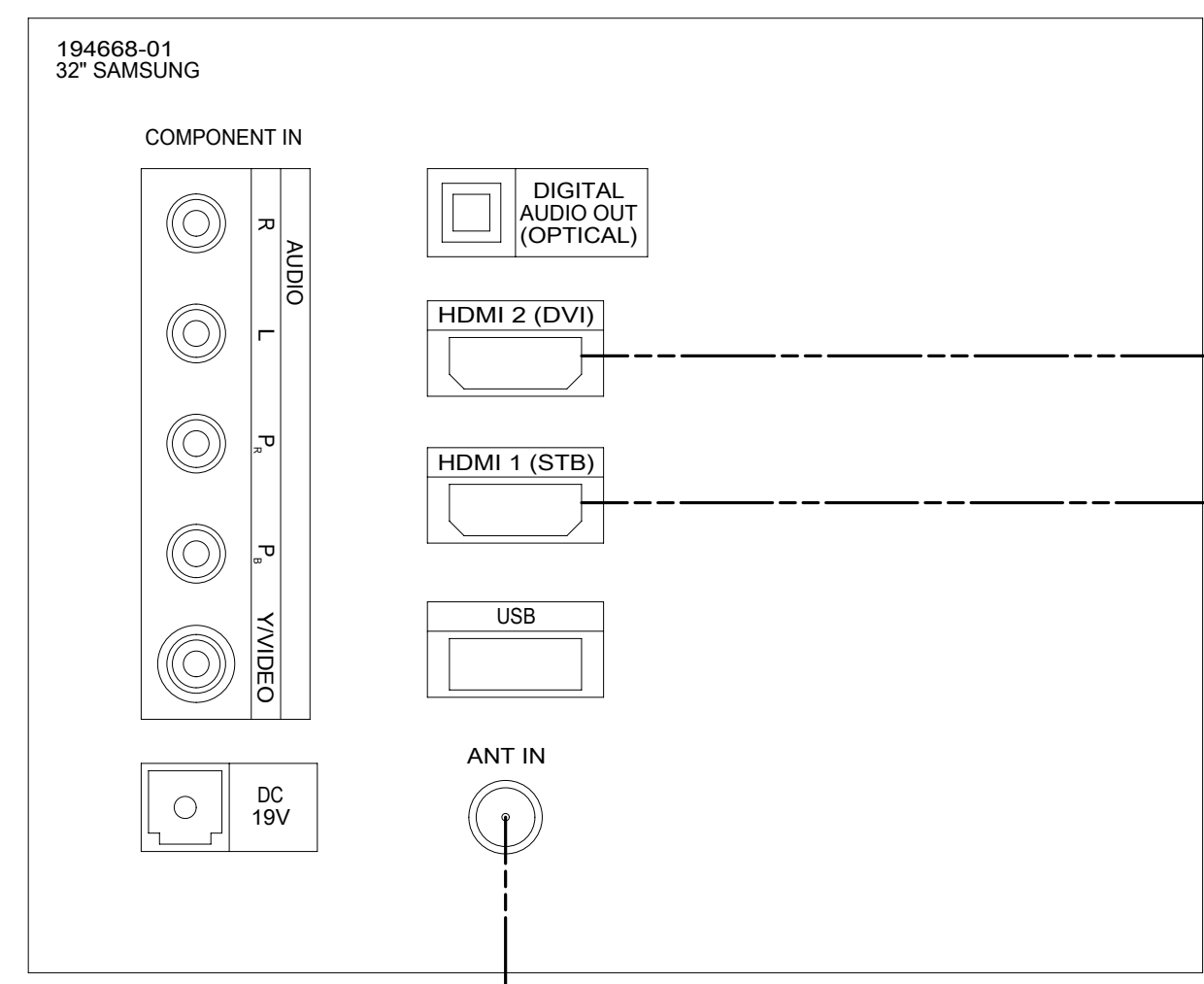
- (783) SATELLITE HD TV SYSTEM AUTOC
- (25M) HOME THEATER SYSTEM, BLU-RAY
- (48P) SAT TV SYSTEM IN-MOTION
- (78C) SATELLITE SYSTEM READY
- (265) CODES/STANDARDS-CSA/CMVSS
- (1B1) CODES/STANDARDS USA

**WINNEBAGO**  
COPYRIGHT 2016 WINNEBAGO INDUSTRIES, INC.

DSNR:	ALL DIMENSIONS ARE IN MILLIMETERS	
DFFR:		
UNSPECIFIED TOLERANCES:		MATERIAL:
WHOLE DIM (X)	3	
ONE-PLACE (X.X)	1.5	
TWO-PLACE (X.XX)	0.50	
ANGLE	1°	
REFER TO ES0018 FOR FASTENER TIGHTENING GUIDELINES	WEIGHT: (LBS)	FIRST USED:
DESCRIPTION: <b>WIRING INSTL-TV/DVD</b>		
SHEET: 1 OF 4	ITEM/PART NO: 000209006 / 30162101000	REV:

REF: 1 20-Sep-2016

8 7 6 5 4 3 2 1



YEL CAT6  
CABLES FROM  
WIRE ASM-COACH

GRN/GRN  
GRN

CABLE-HDMI  
165308-03-000

CABLE-HDMI  
165308-03-000

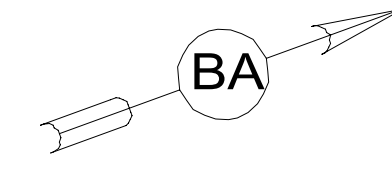
LABEL  
159064-06-CHT

150

GRN FROM WIRE  
ASM-SLIDEOUT

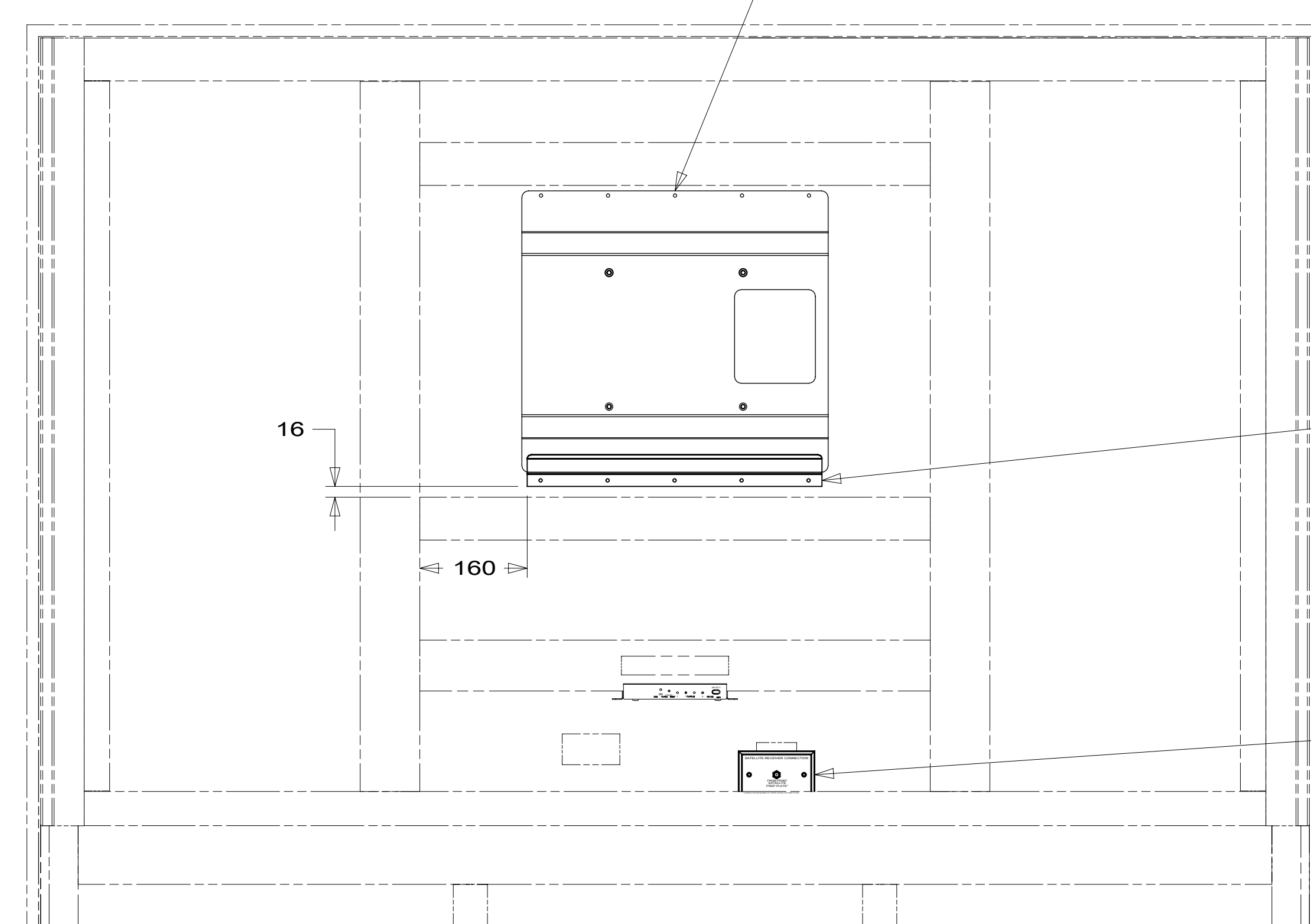
VIEW BB

TV-32", FLAT  
PANEL ELED, HDTV  
194668-01-000  
SCREW-VESA MOUNT  
0MG02U-06-010 (4)  
SCREW-TV STAND MOUNT  
(SUPPLIED WITH TV)



MATRIX-HDMI,  
BALUN GEN 2  
180504-07-000  
BRACKET-MOUNTING,  
RECEIVER  
180543-07-CHT  
SCREW  
G39-10-08U (2)  
TIE-WIRE  
8343-03-000 (3)  
RETAINER-HDMI  
188374-01-CHT (3)

BRACKET-MOUNTING, TV  
195012-01-CHT  
SCREW  
G11-08-12U (10)



CLIP-TRIM  
130034-08-CHT

PLATE-WALL  
149557-12-CHT

VIEW BA  
(SHOWN WITHOUT TV)

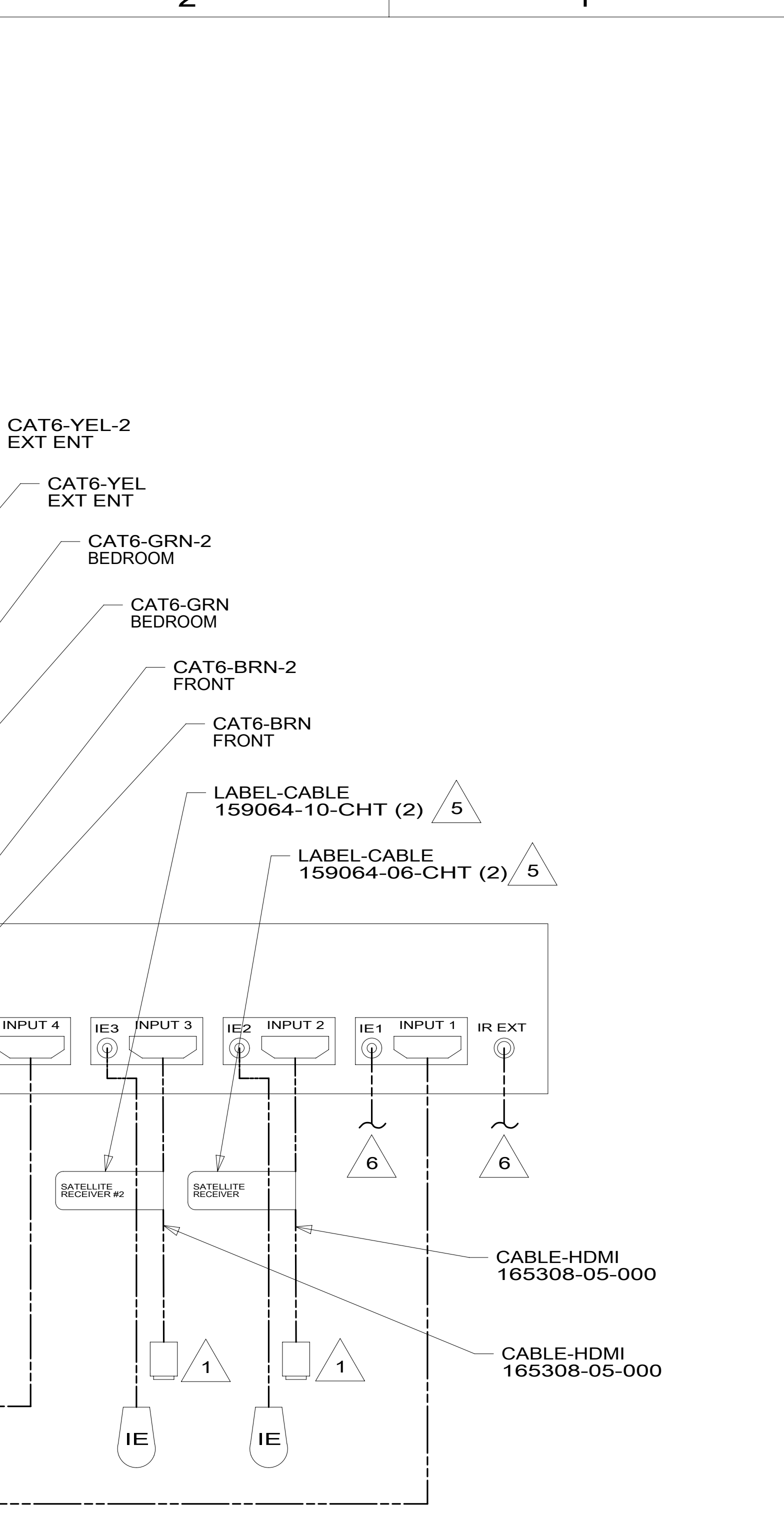
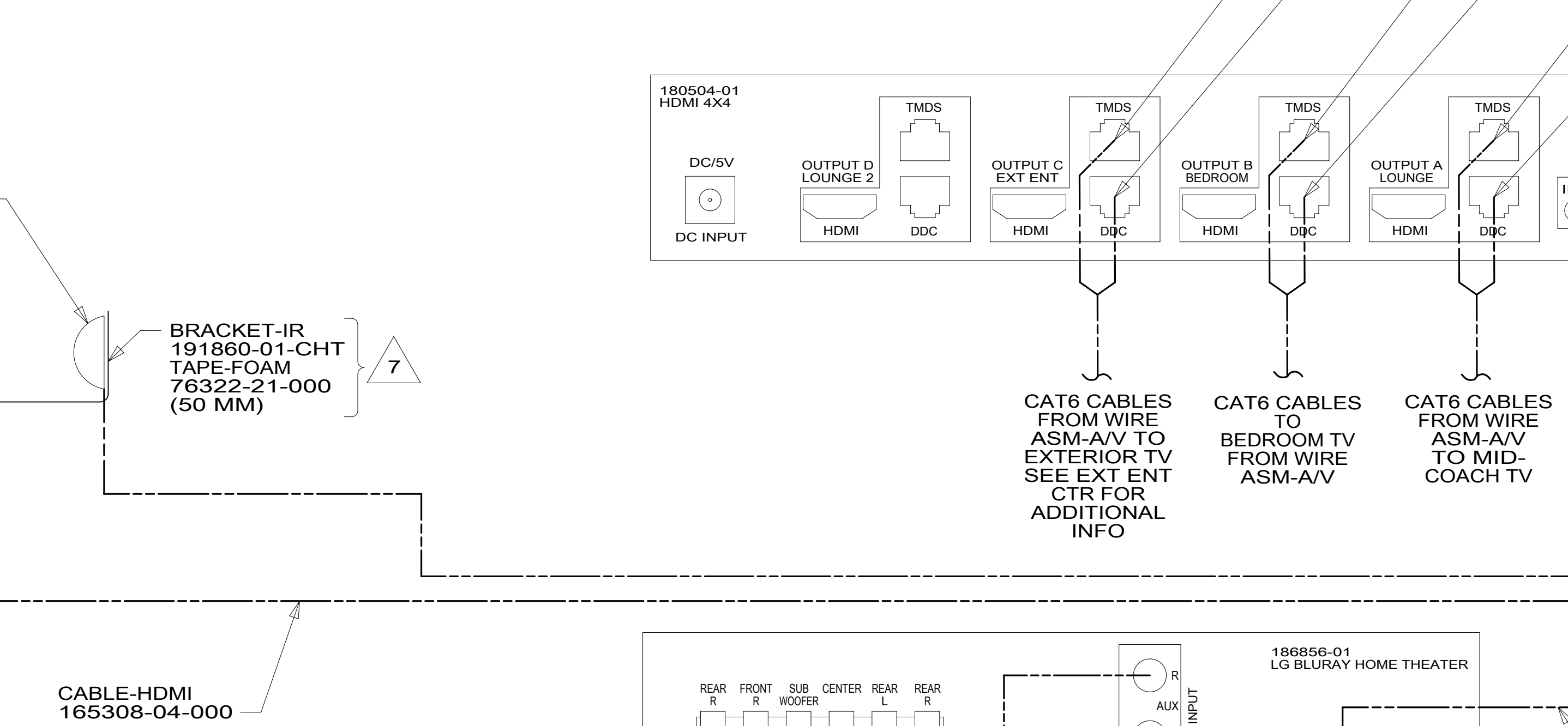
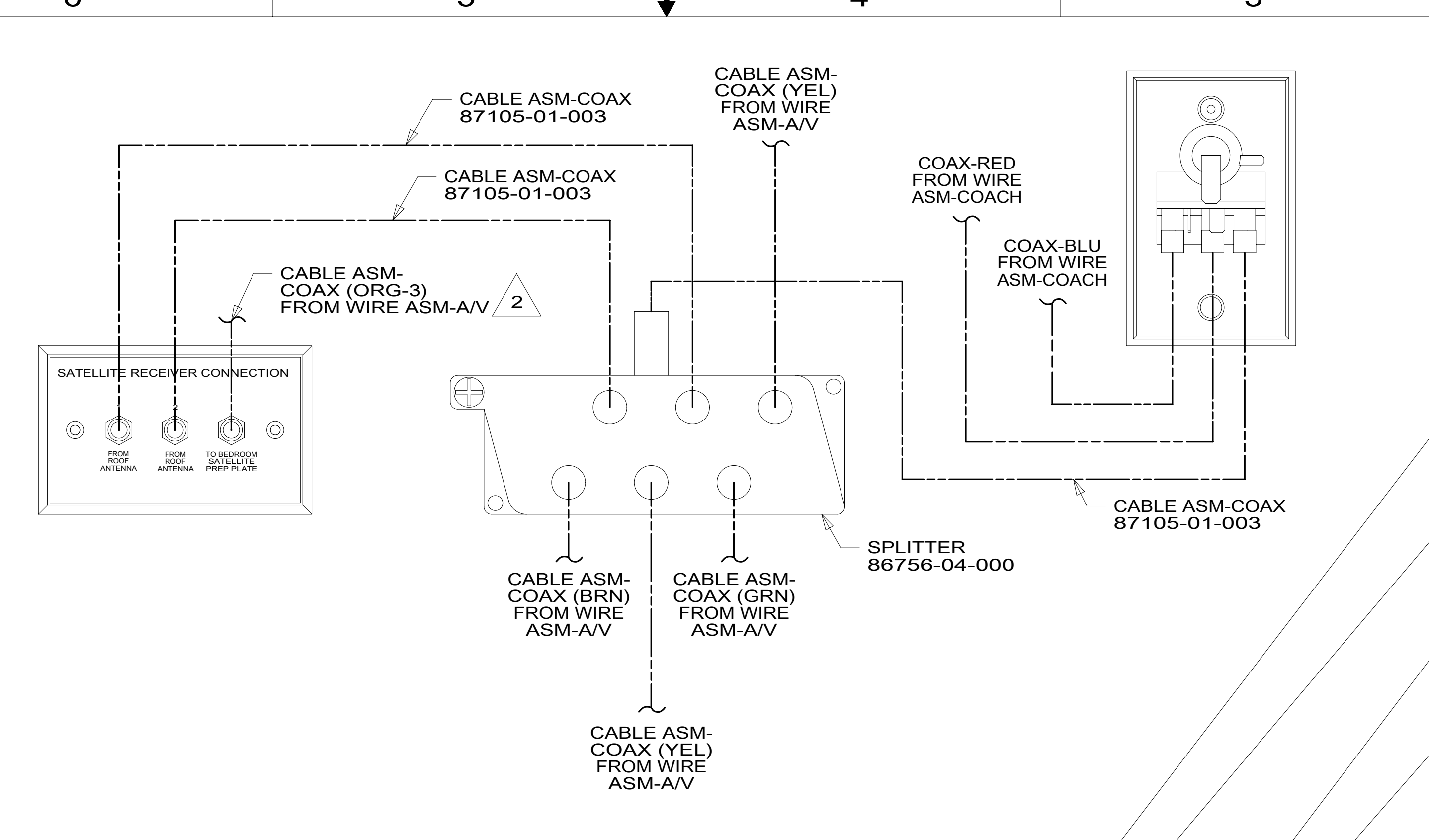
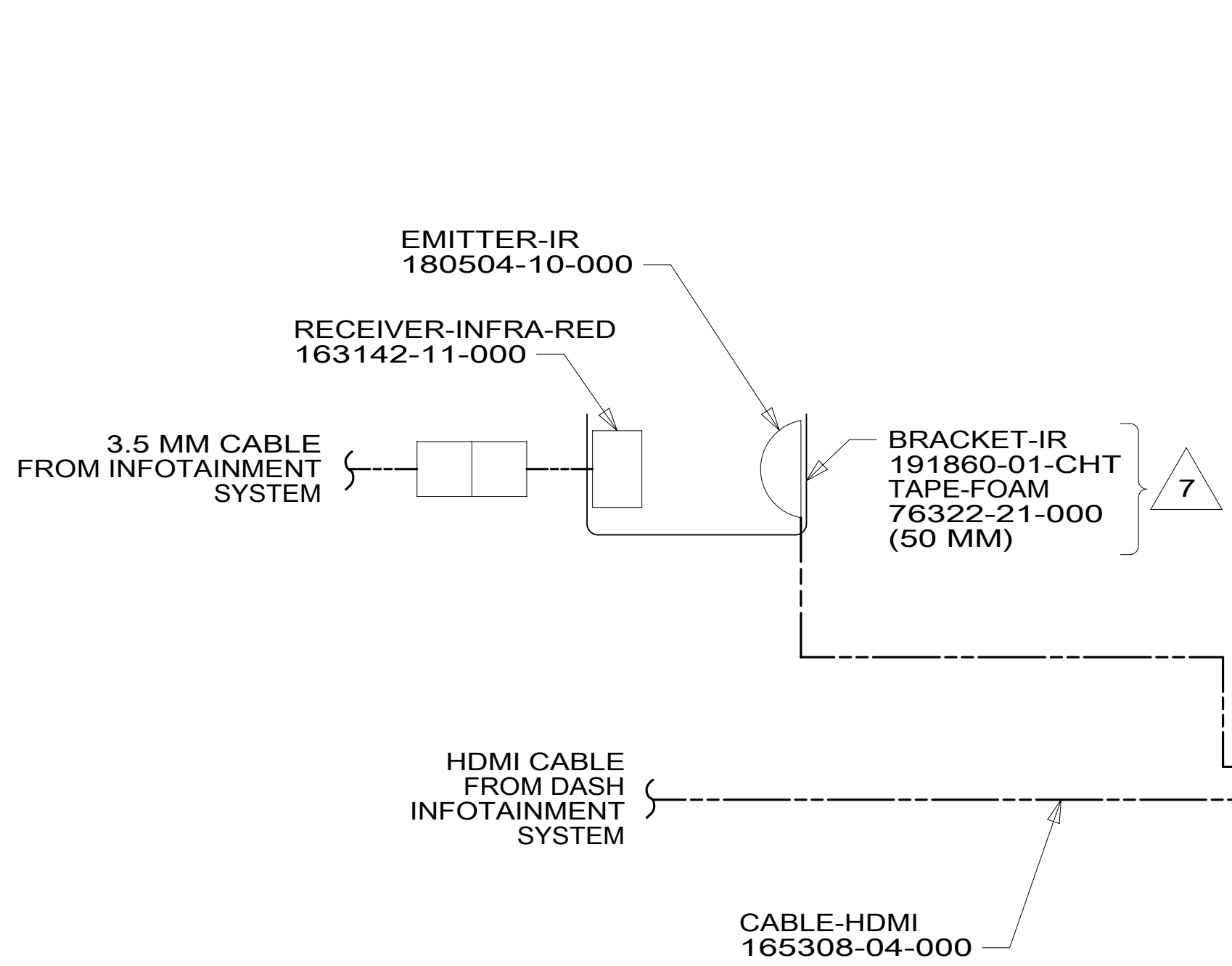
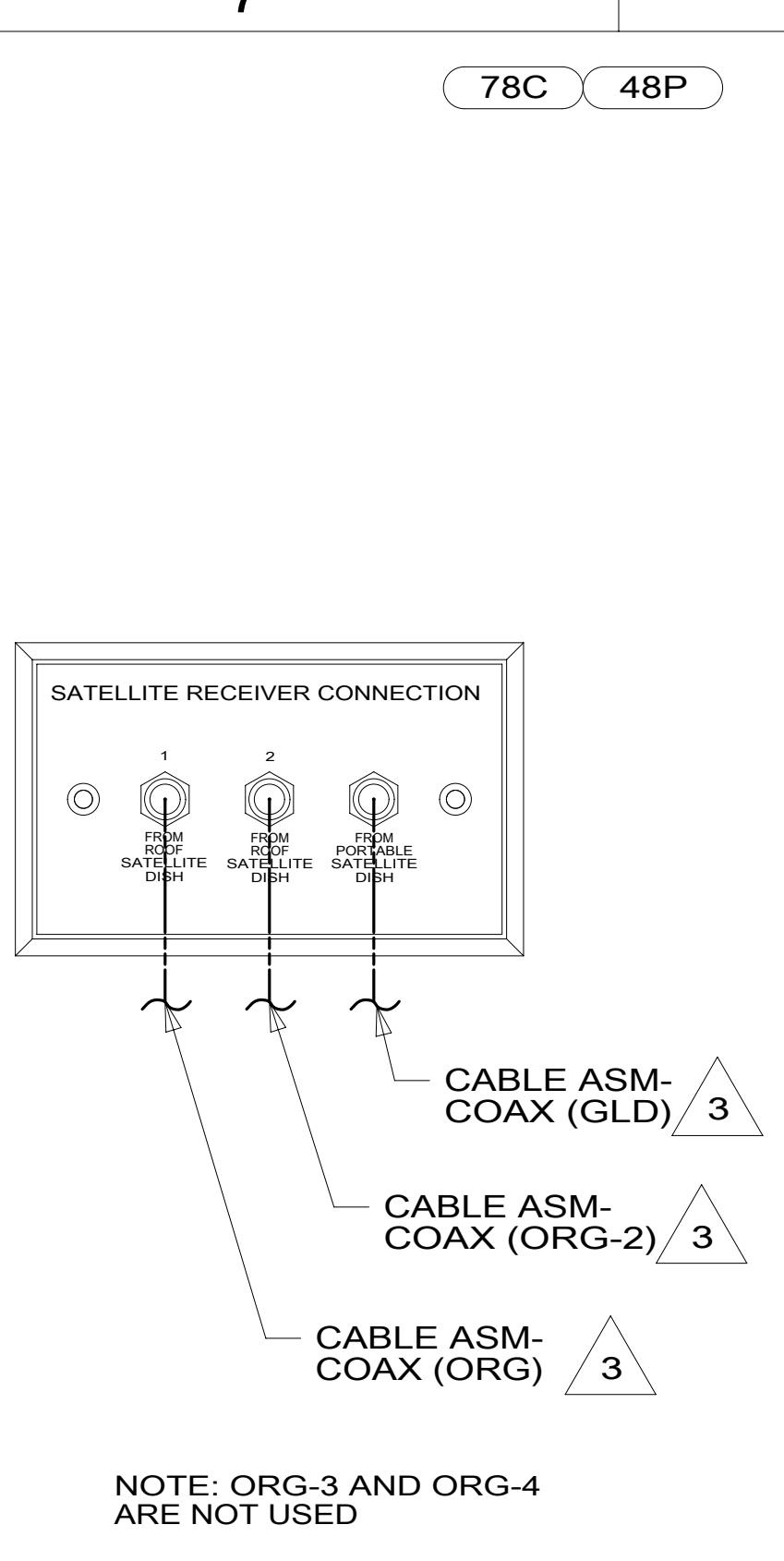
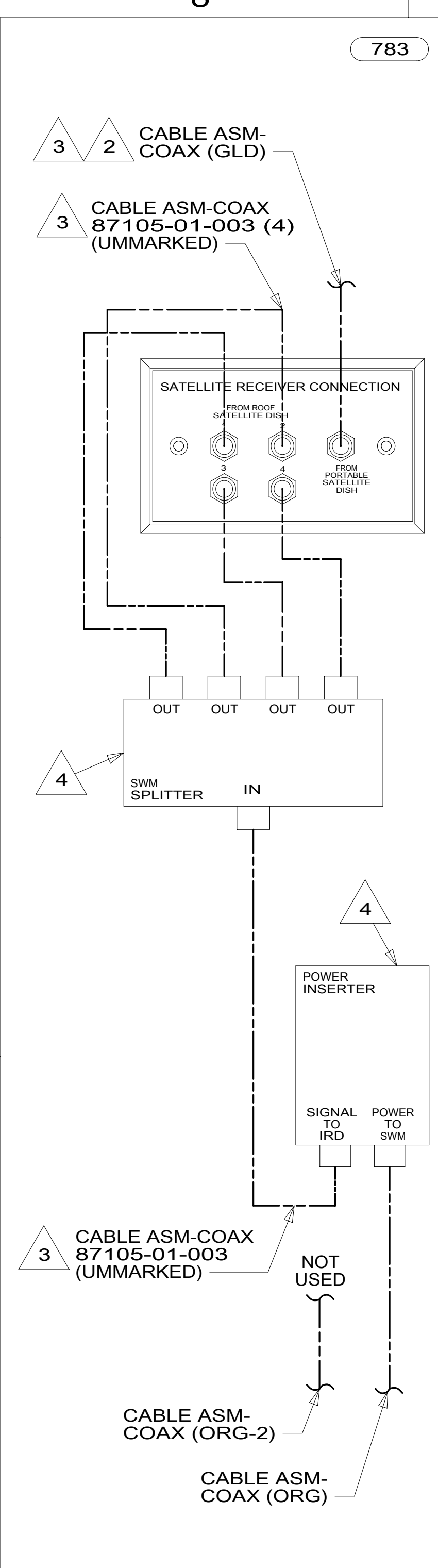
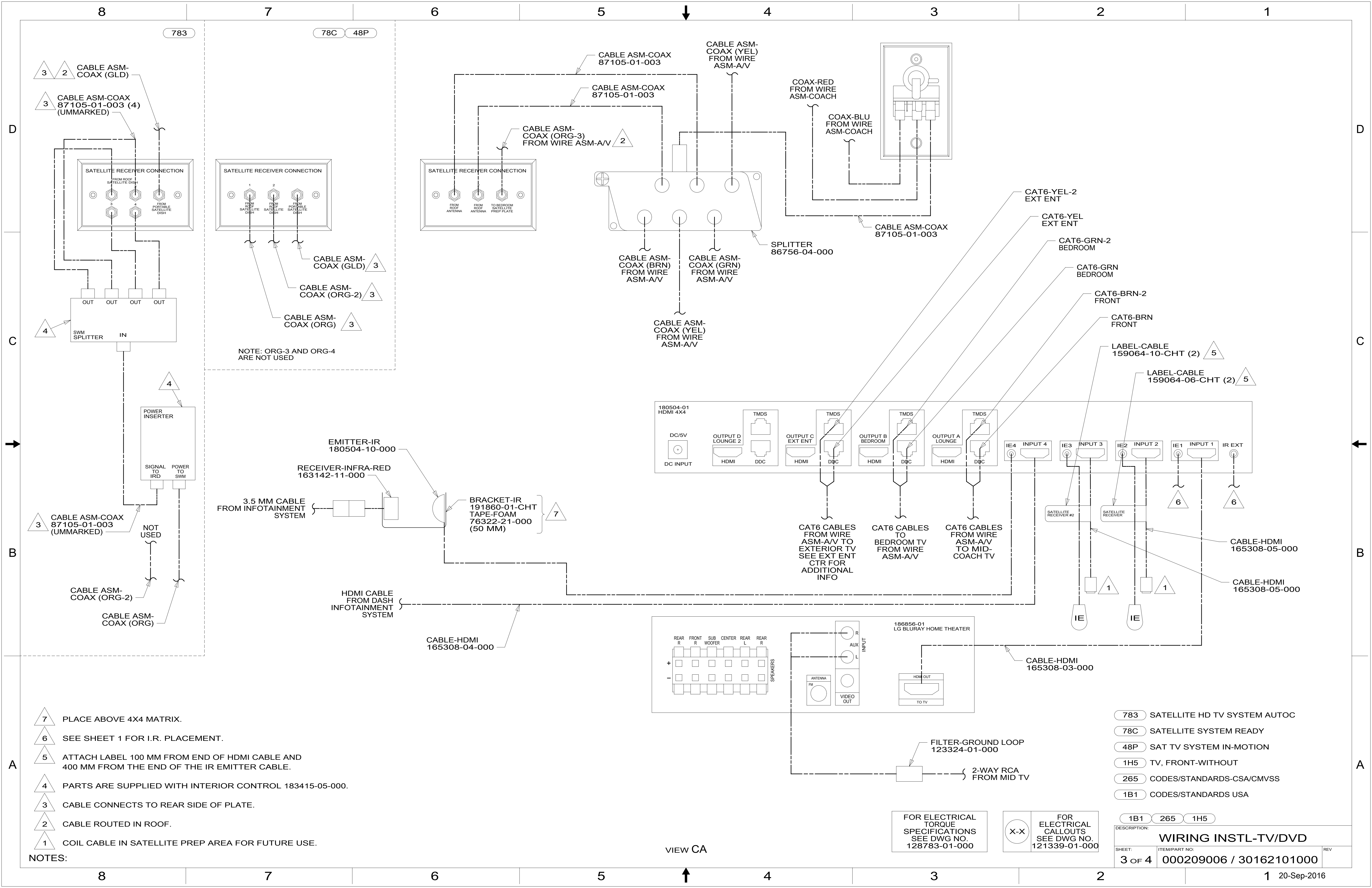
- 195 TV(REAR)-32" COLOR STEREO
- 265 CODES/STANDARDS-CSA/CMVSS
- 1B1 CODES/STANDARDS USA

FOR ELECTRICAL  
TORQUE  
SPECIFICATIONS  
SEE DWG NO.  
128783-01-000

FOR ELECTRICAL  
CALLOUTS  
SEE DWG NO.  
121339-01-000

DESCRIPTION:	1B1 265 195	
<b>WIRING INSTL-TV/DVD</b>		
SHEET:	ITEM/PART NO:	REV
2 OF 4	000209006 / 30162101000	

8 7 6 5 4 3 2 1 20-Sep-2016



- NOTES:
- 7 PLACE ABOVE 4X4 MATRIX.
  - 6 SEE SHEET 1 FOR I.R. PLACEMENT.
  - 5 ATTACH LABEL 100 MM FROM END OF HDMI CABLE AND 400 MM FROM THE END OF THE IR EMITTER CABLE.
  - 4 PARTS ARE SUPPLIED WITH INTERIOR CONTROL 183415-05-000.
  - 3 CABLE CONNECTS TO REAR SIDE OF PLATE.
  - 2 CABLE ROUTED IN ROOF.
  - 1 COIL CABLE IN SATELLITE PREP AREA FOR FUTURE USE.

783 SATELLITE HD TV SYSTEM AUTOC  
 78C SATELLITE SYSTEM READY  
 48P SAT TV SYSTEM IN-MOTION  
 1H5 TV, FRONT-WITHOUT  
 265 CODES/STANDARDS-CSA/CMVSS  
 1B1 CODES/STANDARDS USA

FOR ELECTRICAL TORQUE SPECIFICATIONS SEE DWG NO. 128783-01-000

FOR ELECTRICAL CALLOUTS SEE DWG NO. 121339-01-000

DESCRIPTION: **WIRING INSTL-TV/DVD**

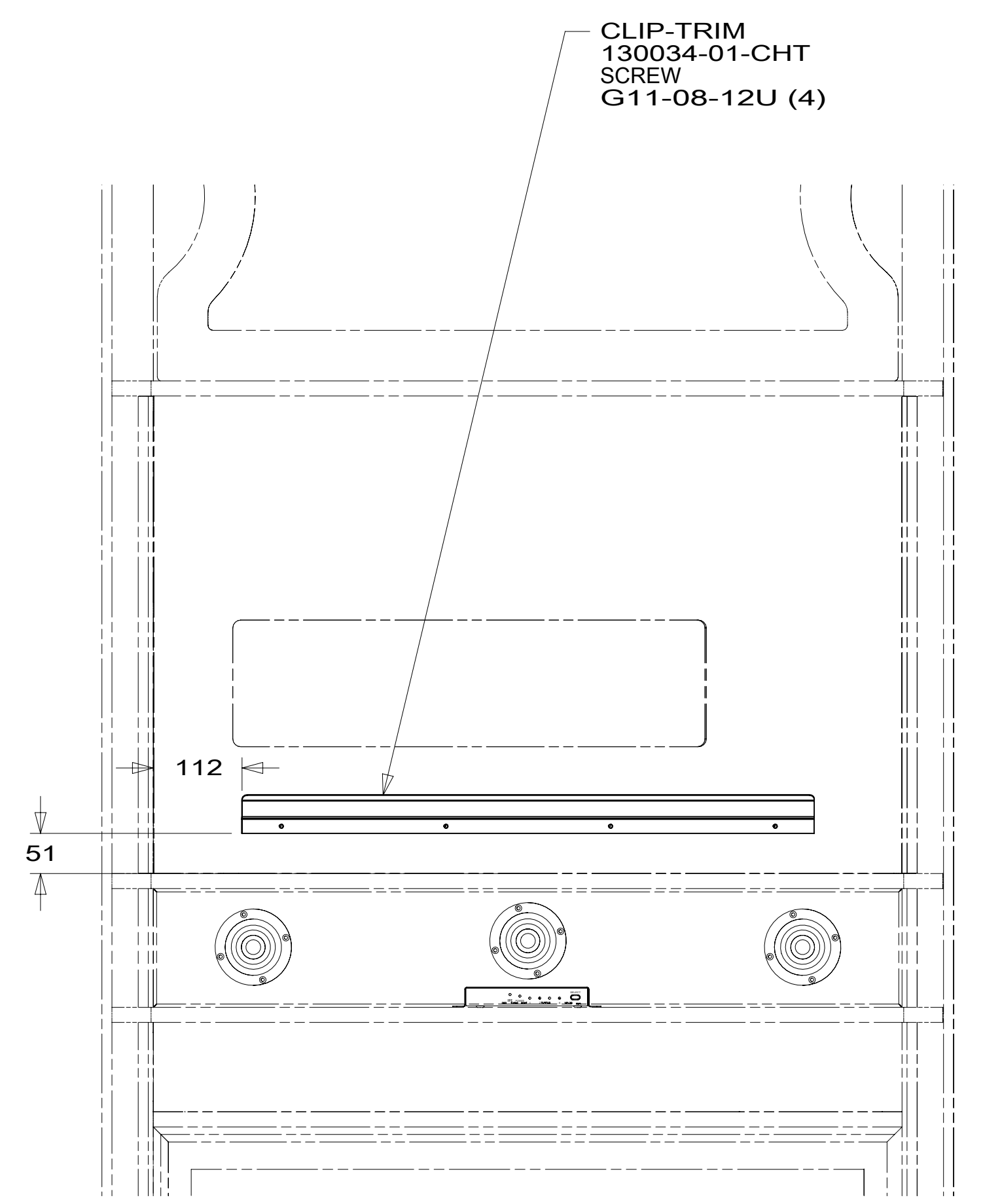
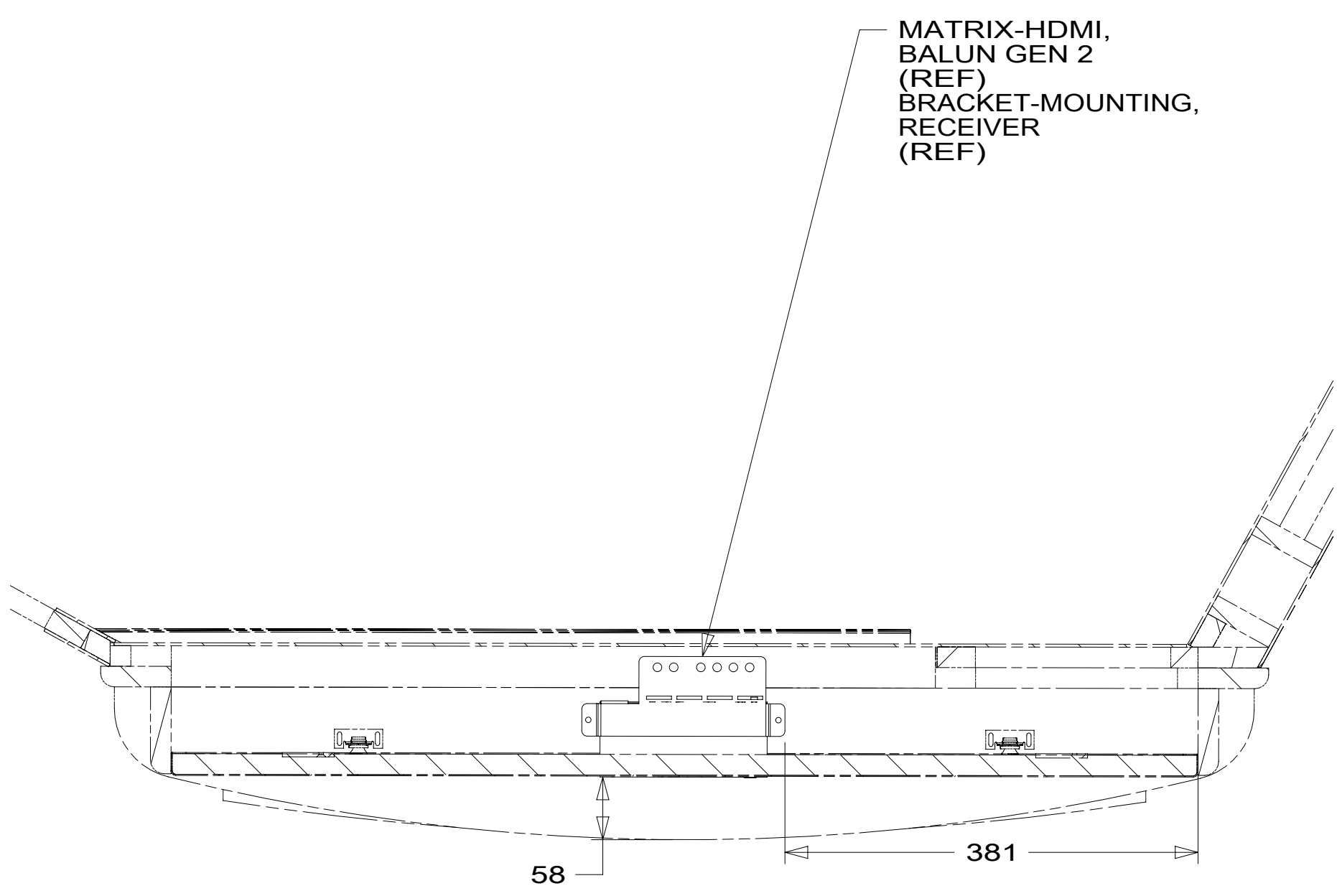
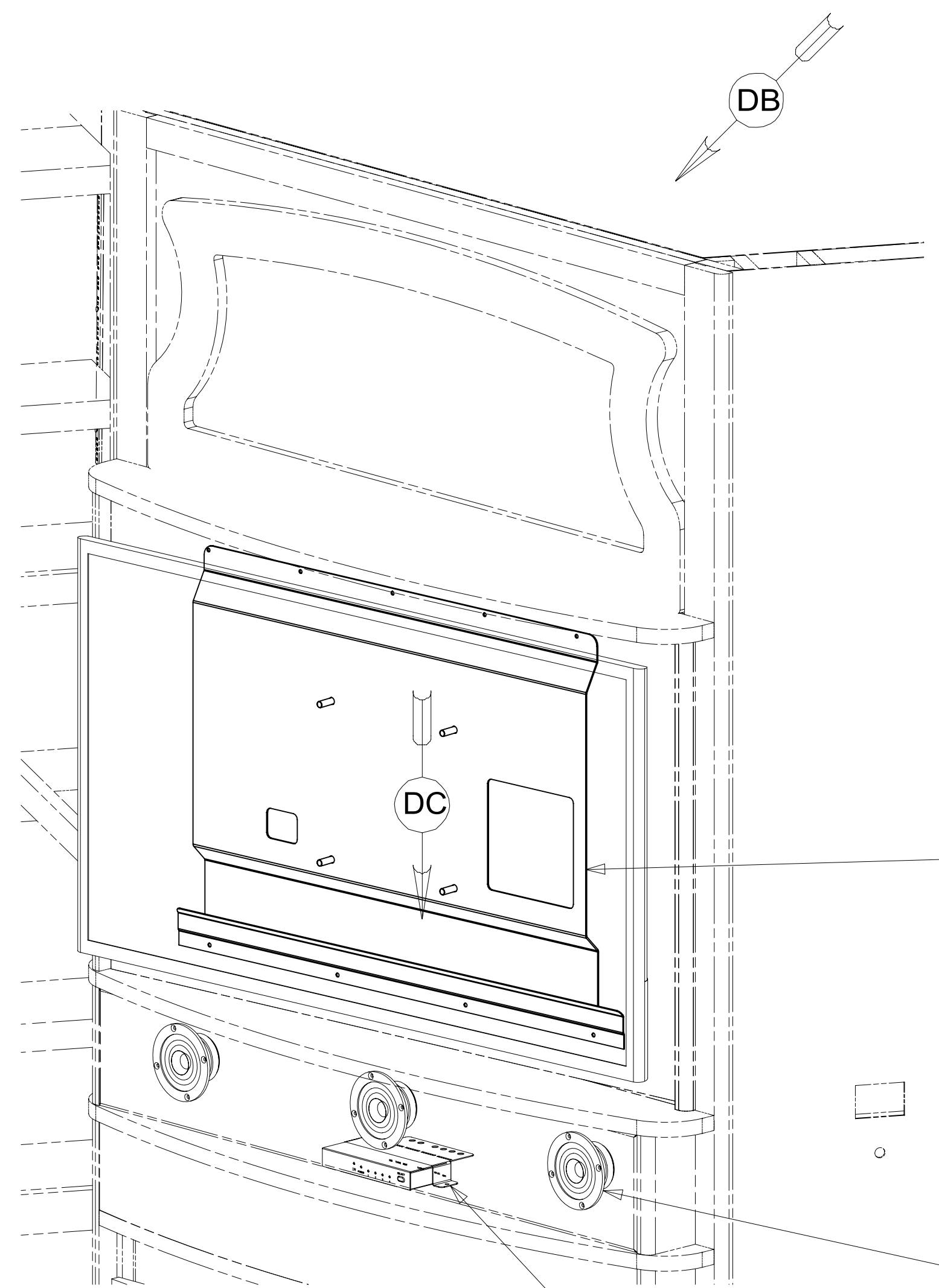
SHEET: 3 OF 4 ITEM/PART NO.: 000209006 / 30162101000 REV

1B1 265 1H5

1 20-Sep-2016

VIEW CA

8 7 6 5 4 3 2 1



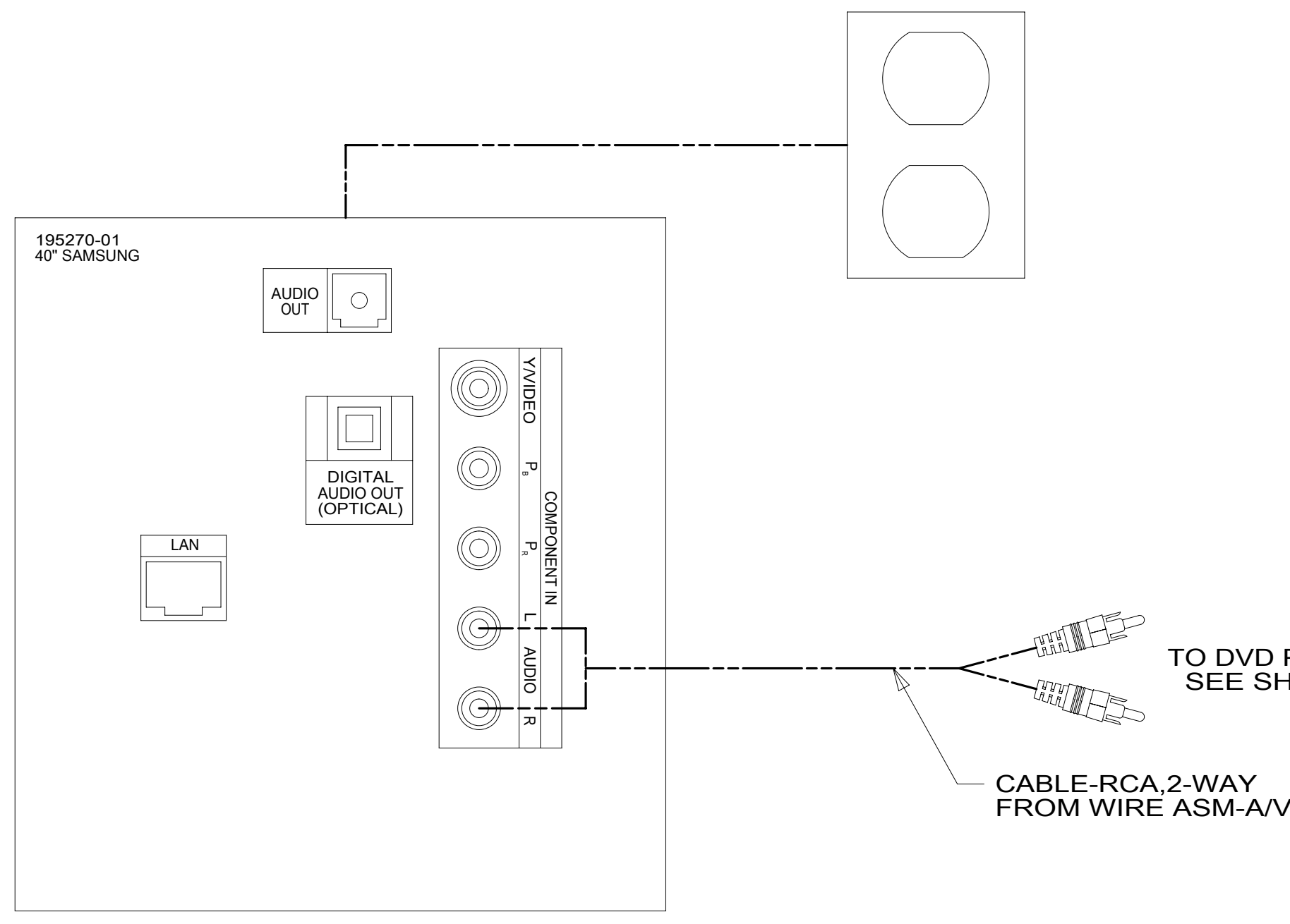
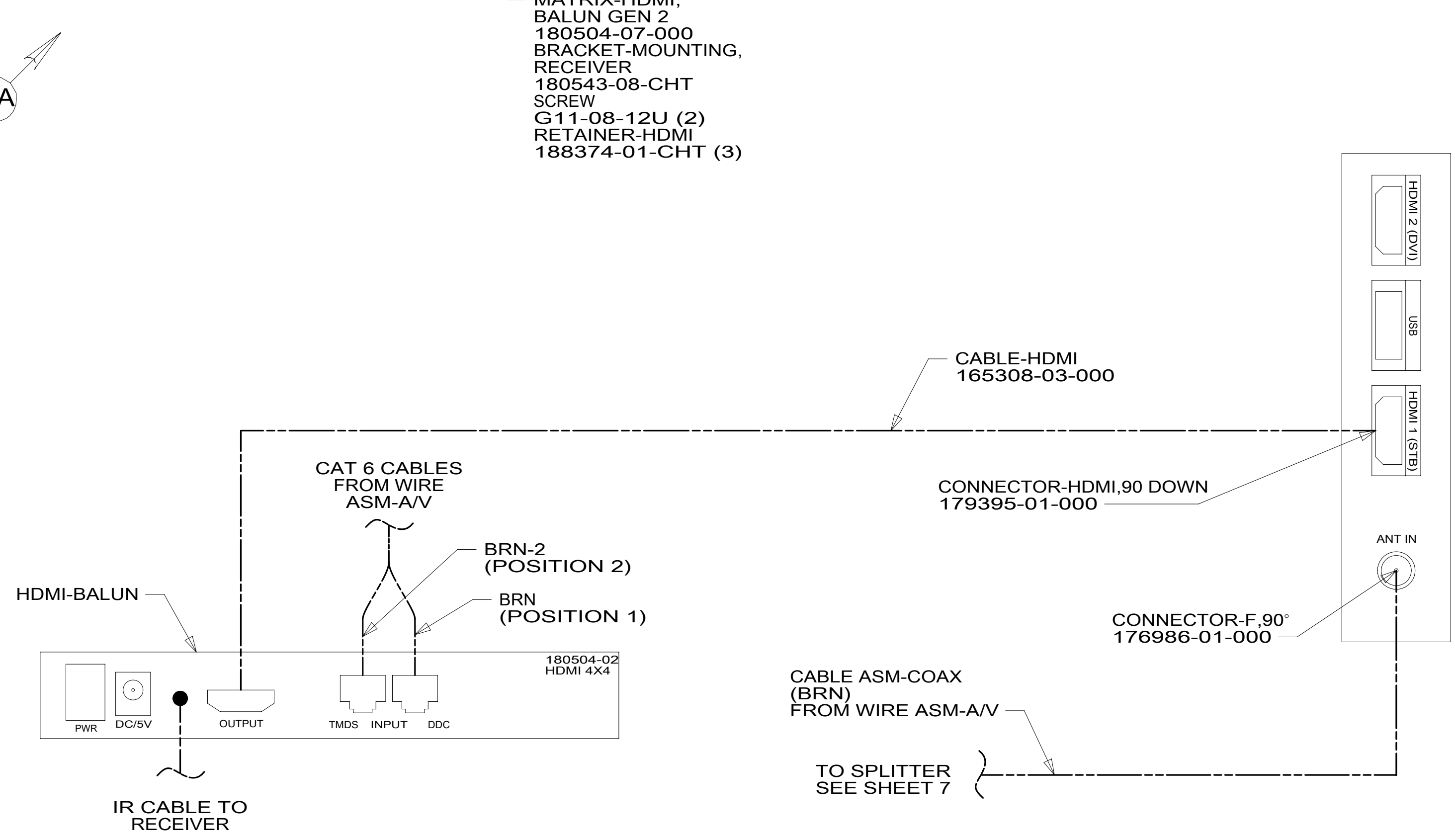
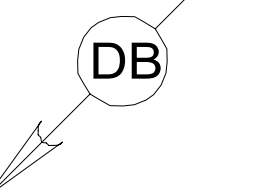
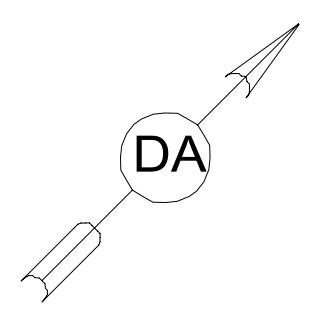
TV-40", FLAT  
 PANEL LED, HDTV  
 195270-01-000  
 BOLT  
 OMC31K-08-025 (4)  
 WASHER  
 156569-01-CHT (4)  
 SCREW  
 G11-08-12U (3)  
 BRACKET-MOUNTING, TV  
 302426-01-CHT

SPEAKER-ROUND, W/O CASE  
 160868-01-CHT (3)  
 SCREW  
 G11-07-08U (12)

MATRIX-HDMI,  
 BALUN GEN 2  
 180504-07-000  
 BRACKET-MOUNTING,  
 RECEIVER  
 180543-08-CHT  
 SCREW  
 G11-08-12U (2)  
 RETAINER-HDMI  
 188374-01-CHT (3)

VIEW DC

VIEW DA  
 (TV NOT SHOWN)



VIEW DB

FOR ELECTRICAL  
 TORQUE  
 SPECIFICATIONS  
 SEE DWG NO.  
 128783-01-000

FOR ELECTRICAL  
 CALLOUTS  
 SEE DWG NO.  
 121339-01-000

265 CODES/STANDARDS-CSA/CMVSS  
 1B1 CODES/STANDARDS USA

DESCRIPTION:	1B1 265	
<b>WIRING INSTL-TV/DVD</b>		
SHEET:	ITEM/PART NO:	REV
4 OF 4	000209006 / 30162101000	