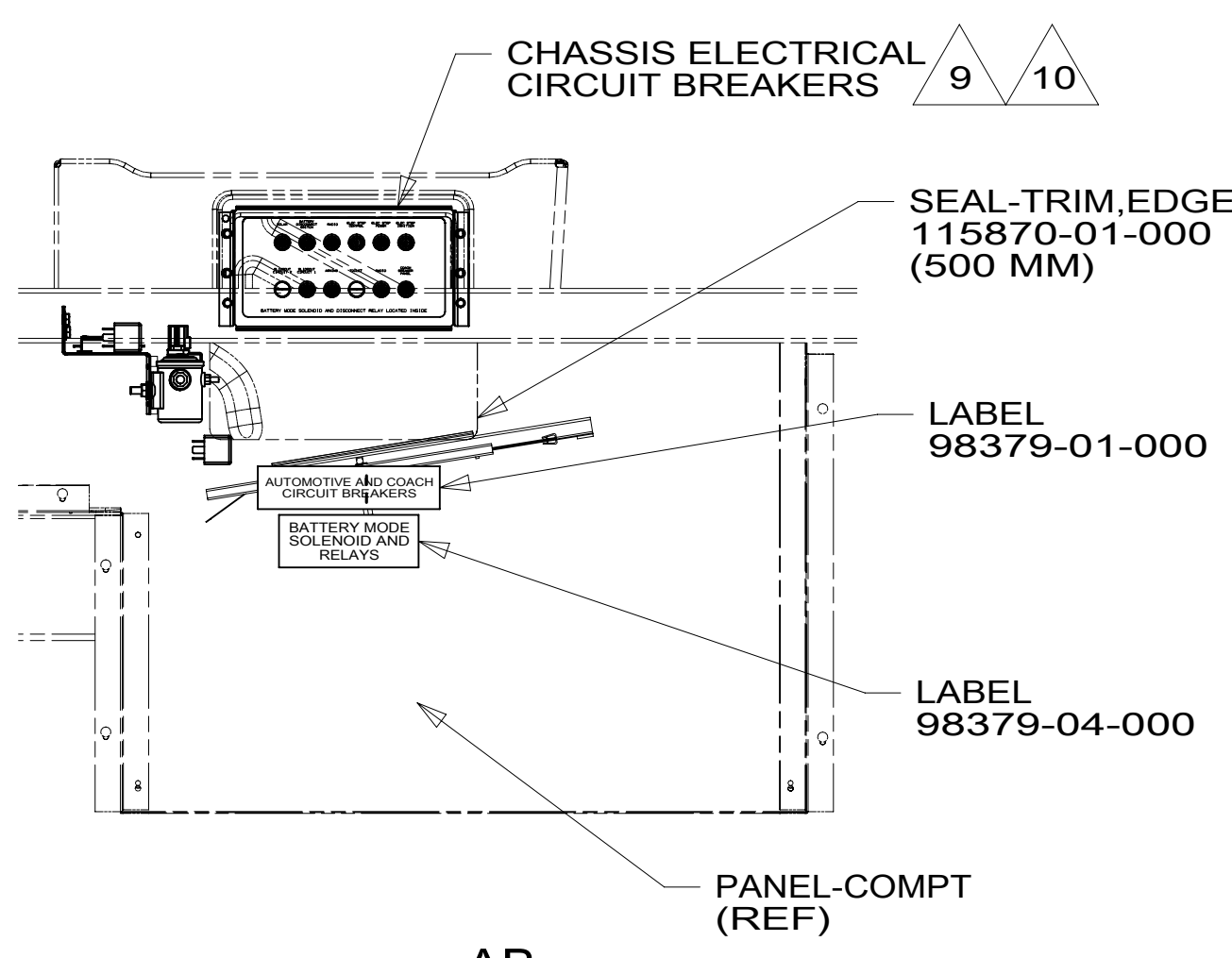
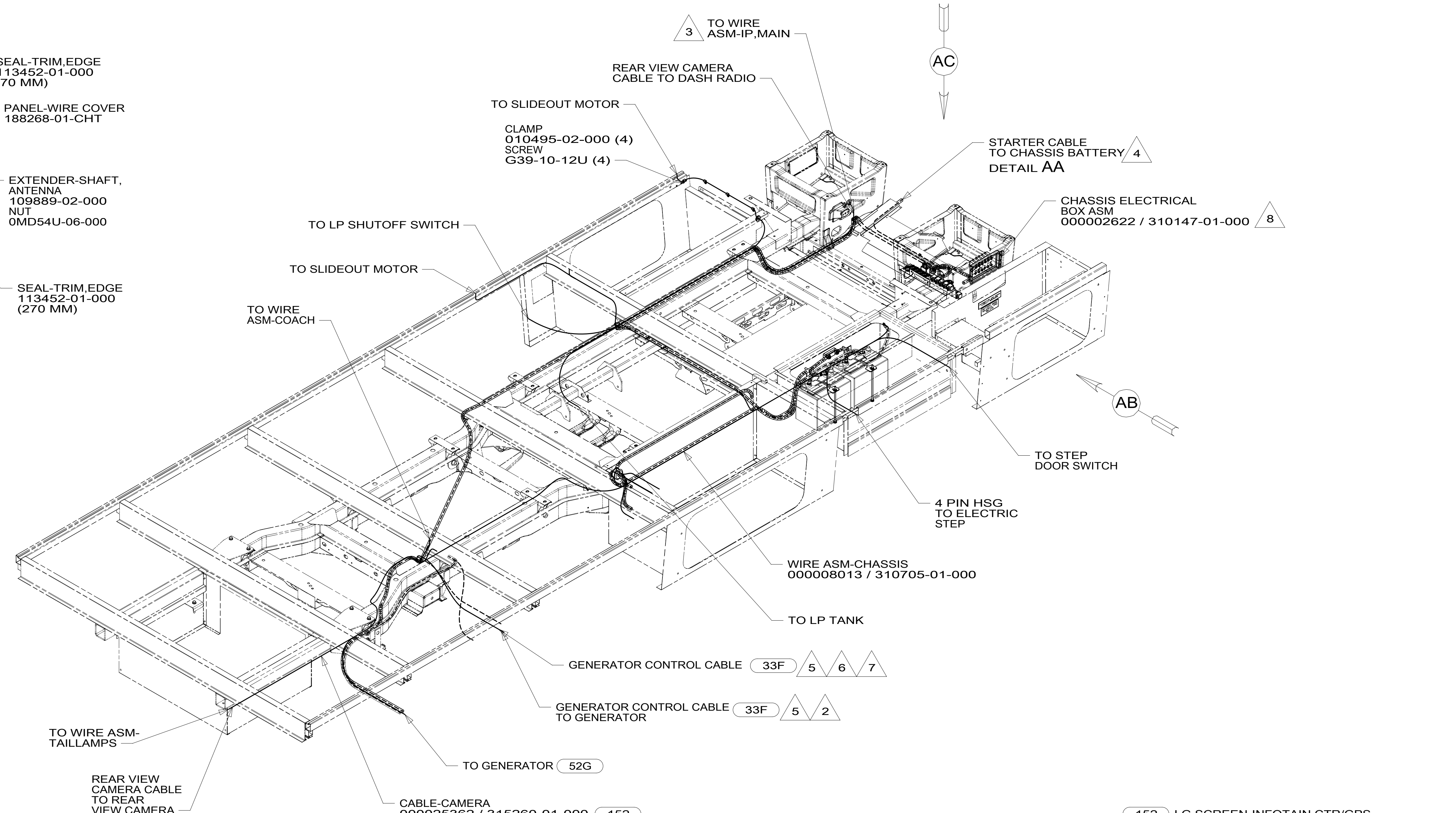


- NOTES:
- 1. SECURE CONDUIT 41953, TAB AS REQUIRED, OVER ALL WIRES IN CONTACT WITH SHARP EDGES.
  - 2. 10 PIN HOUSING CONNECTS TO GENERATOR
  - 3. CUT WIRE TIE AROUND SPRINTER SEAL, ROUTE THE CHASSIS WIRING THROUGH HOLE AND WIRE TIE SEAL WITH WIRE TIE 8343-04-000.
  - 4. SEE BATTERY INSTL FOR ADDITIONAL INFORMATION.
  - 5. CABLE SUPPLIED WITH DIESEL GENERATOR.
  - 6. ROUTE GENERATOR CONTROL CABLE ALONG WIRE ASM-CHASSIS THROUGH FLOOR IN THIS AREA.
  - 7. 12 PIN HOUSING TO BE ROUTED ABOVE FLOOR TO CONTROL PANEL.
  - 8. LOCATED BELOW PASSENGER SEAT.
  - 9. SEE CHASSIS ELECTRICAL BOX ASM FOR ADDITIONAL INFORMATION.
  - 10. REMOVE AND DISCARD SUPPLIED PLASTIC COVER INSTALLED ON PASSENGER SEAT PEDESTAL

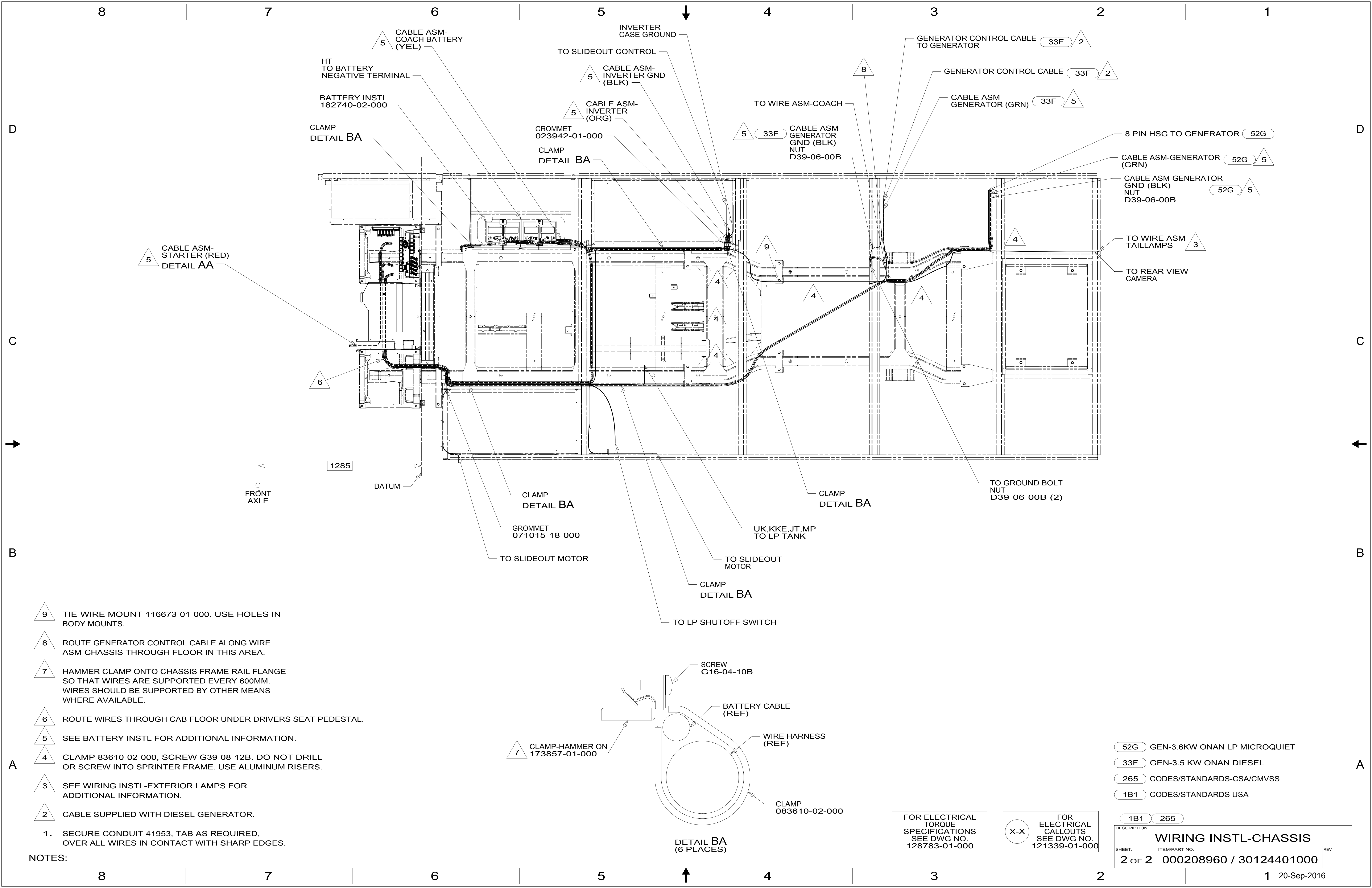


152	LG SCREEN-INFOTAIN CTR/GPS
52G	GEN-3.6KW ONAN LP MICROQUIET
33F	GEN-3.5 KW ONAN DIESEL
1ME	MERCEDES-11,030# DIESEL, COWL
265	CODES/STANDARDS-CSA/CMVSS
1B1	CODES/STANDARDS USA

<b>WINNEBAGO</b>			
COPYRIGHT 2016 WINNEBAGO INDUSTRIES, INC.			
DSNR:	ALL DIMENSIONS ARE IN MILLIMETERS	MATERIAL:	
DFTFR:			
UNSPECIFIED TOLERANCES:		WEIGHT: (LBS)	FIRST USED:
WHOLE DIM (X)	3		16 H25T
ONE-PLACE (X.X)	1.5		
TWO-PLACE (X.XX)	0.50		
ANGLE	1°		
REFER TO ES0018 FOR FASTENER TIGHTENING GUIDELINES			
<b>DESCRIPTION:</b> WIRING INSTL-CHASSIS			
SHEET: 1 OF 2	ITEM/PART NO: 000208960 / 30124401000	REV	
REF:			

FOR ELECTRICAL TORQUE SPECIFICATIONS SEE DWG NO. 128783-01-000

FOR ELECTRICAL CALLOUTS SEE DWG NO. 121339-01-000



5 CABLE ASM-STARTER (RED) DETAIL AA

HT TO BATTERY NEGATIVE TERMINAL  
BATTERY INSTL 182740-02-000  
CLAMP DETAIL BA

5 CABLE ASM-COACH BATTERY (YEL)

5 CABLE ASM-INVERTER (ORG)  
GROMMET 023942-01-000  
CLAMP DETAIL BA

5 CABLE ASM-INVERTER GND (BLK)

INVERTER CASE GROUND  
TO SLIDEOUT CONTROL

5 33F CABLE ASM-GENERATOR GND (BLK) NUT D39-06-00B

TO WIRE ASM-COACH

GENERATOR CONTROL CABLE TO GENERATOR

GENERATOR CONTROL CABLE 33F 2

CABLE ASM-GENERATOR (GRN) 33F 5

8 PIN HSG TO GENERATOR 52G

CABLE ASM-GENERATOR (GRN) 52G 5

CABLE ASM-GENERATOR GND (BLK) NUT D39-06-00B 52G 5

TO WIRE ASM-TAILLAMPS 3

TO REAR VIEW CAMERA

FRONT AXLE

1285

DATUM

CLAMP DETAIL BA

GROMMET 071015-18-000

TO SLIDEOUT MOTOR

CLAMP DETAIL BA

UK,KKE,JT,MP TO LP TANK

TO SLIDEOUT MOTOR

CLAMP DETAIL BA

TO GROUND BOLT NUT D39-06-00B (2)

TO LP SHUTOFF SWITCH

9 TIE-WIRE MOUNT 116673-01-000. USE HOLES IN BODY MOUNTS.

8 ROUTE GENERATOR CONTROL CABLE ALONG WIRE ASM-CHASSIS THROUGH FLOOR IN THIS AREA.

7 HAMMER CLAMP ONTO CHASSIS FRAME RAIL FLANGE SO THAT WIRES ARE SUPPORTED EVERY 600MM. WIRES SHOULD BE SUPPORTED BY OTHER MEANS WHERE AVAILABLE.

6 ROUTE WIRES THROUGH CAB FLOOR UNDER DRIVERS SEAT PEDESTAL.

5 SEE BATTERY INSTL FOR ADDITIONAL INFORMATION.

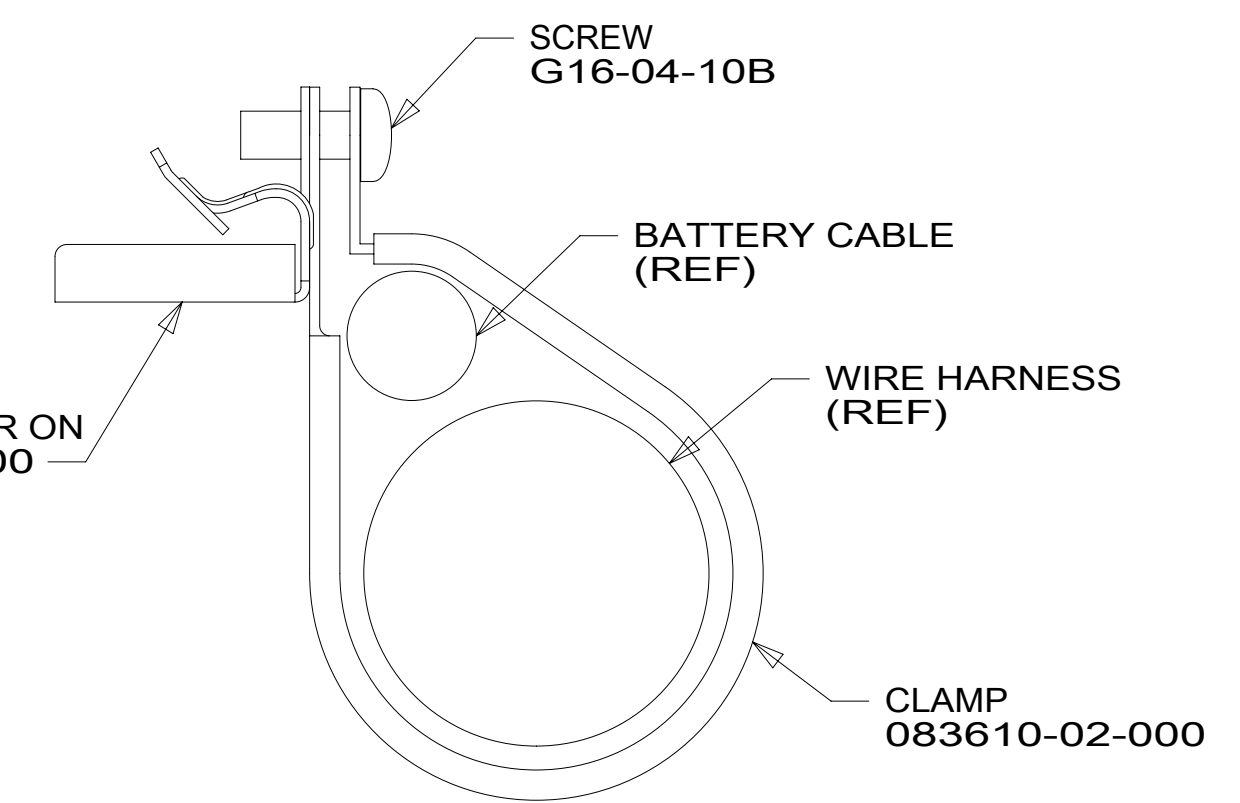
4 CLAMP 83610-02-000, SCREW G39-08-12B. DO NOT DRILL OR SCREW INTO SPRINTER FRAME. USE ALUMINUM RISERS.

3 SEE WIRING INSTL-EXTERIOR LAMPS FOR ADDITIONAL INFORMATION.

2 CABLE SUPPLIED WITH DIESEL GENERATOR.

1. SECURE CONDUIT 41953, TAB AS REQUIRED, OVER ALL WIRES IN CONTACT WITH SHARP EDGES.

NOTES:



- 52G GEN-3.6KW ONAN LP MICROQUIET
- 33F GEN-3.5 KW ONAN DIESEL
- 265 CODES/STANDARDS-CSA/CMVSS
- 1B1 CODES/STANDARDS USA

FOR ELECTRICAL TORQUE SPECIFICATIONS SEE DWG NO. 128783-01-000

FOR ELECTRICAL CALLOUTS SEE DWG NO. 121339-01-000

DESCRIPTION:		1B1 265	
<b>WIRING INSTL-CHASSIS</b>			
SHEET:	ITEM/PART NO.:	REV	
2 OF 2	000208960 / 30124401000		