

ANTENNA-SATELLITE RADIO  
181908-02-000  
PLATE-SATELLITE RADIO  
177256-04-CHT  
SCREW  
G-11-08-08U (4)  
SEAL

70C  
643 5

CABLE-MONITOR 1 3

WIRE ASM-MONITOR, 15'  
(REF) 283

70C  
643 CABLE-ANTENNA, SATELLITE  
(SUPPLIED WITH ANTENNA) 6

283 WIRE ASM-MONITOR  
(REF)

4 ANTENNA-RADIO

HOLE IN FLOOR

- NOTES:
- 6 ROUTE CABLE FROM RADIO TO PASSENGER'S STEPWELL AREA, UP WINGWALL, THROUGH SLEEPER BOARD ASM, UNDER TRIM TO ANTENNA PLATE ON ROOF.
  - 5 MOUNT ANTENNA AND PLATE SUCH THAT BASE IS SQUARE WITH ROOF AND DIRECTLY OVER HOLE IN ROOF. SEAL BOTH HOLE IN ROOF AND ANTENNA BASE AT SCREWS.
  - 4 SUPPLIED WITH CHASSIS. USE SHORTEST SUPPLIED ANTENNA.
  - 3 ROUTE CABLE TO DASH RADIO.
  - 2 WIRING IS ROUTED DIFFERENTLY FOR EACH UNIT FROM THIS POINT REARWARD.
  - 1 REAR MONITOR CAMERA CABLE IS PART OF WIRE ASM-CHASSIS AND RUNS ALONG LEFT FRAME RAIL.

- 643 RENTAL-MILES DIXON
- 70C RADIO - SATELLITE
- 283 MIRRORS-UPGRADE W/CAMERA
- 265 CODES/STANDARDS-CSA/CMVSS
- 1B1 CODES/STANDARDS USA

**WINNEBAGO**  
COPYRIGHT 2016 WINNEBAGO INDUSTRIES, INC.

DSNR:	ALL DIMENSIONS ARE IN MILLIMETERS
DFFR:	MATERIAL:
UNSPECIFIED TOLERANCES:	WEIGHT: (LBS)
WHOLE DIM (X) : 3	FIRST USED: 16 331K
ONE-PLACE (X.X) : 1.5	
TWO-PLACE (X.XX) : 0.50	
ANGLE : 1°	

REFER TO ES0018 FOR FASTENER TIGHTENING GUIDELINES

DESCRIPTION: **RADIO/MONITOR INSTL**

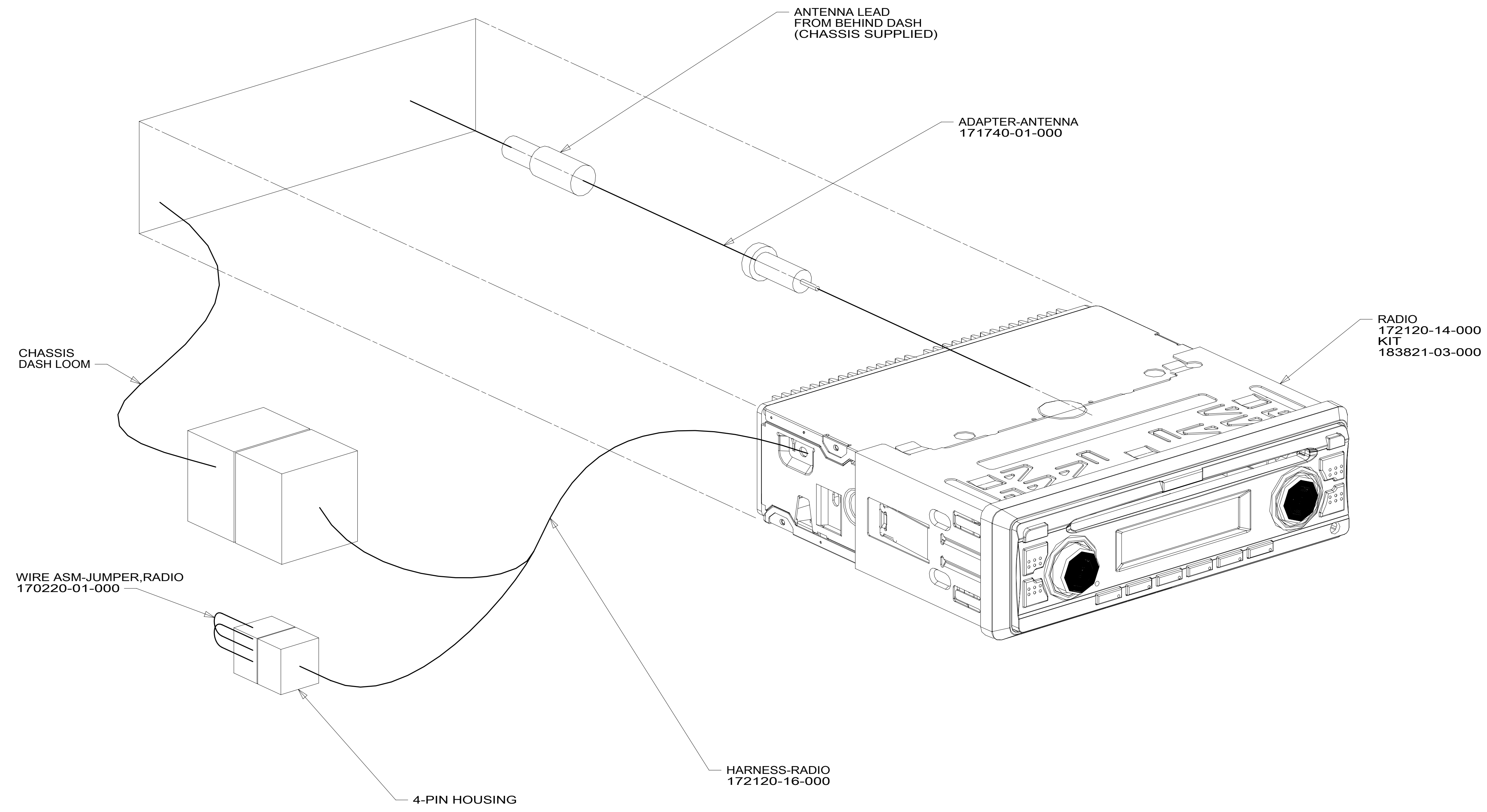
SHEET: 1 OF 5 ITEM/PART NO: 000208695 / 30074101000 REF: 1 20-Sep-2016

FOR ELECTRICAL TORQUE SPECIFICATIONS SEE DWG NO. 128783-01-000

X-X FOR ELECTRICAL CALLOUTS SEE DWG NO. 121339-01-000

8 7 6 5 4 3 2 1

D  
C  
B  
A



- 19V RADIO-AM/FM STEREO CD PLAYER
- 265 CODES/STANDARDS-CSA/CMVSS
- 1B1 CODES/STANDARDS USA

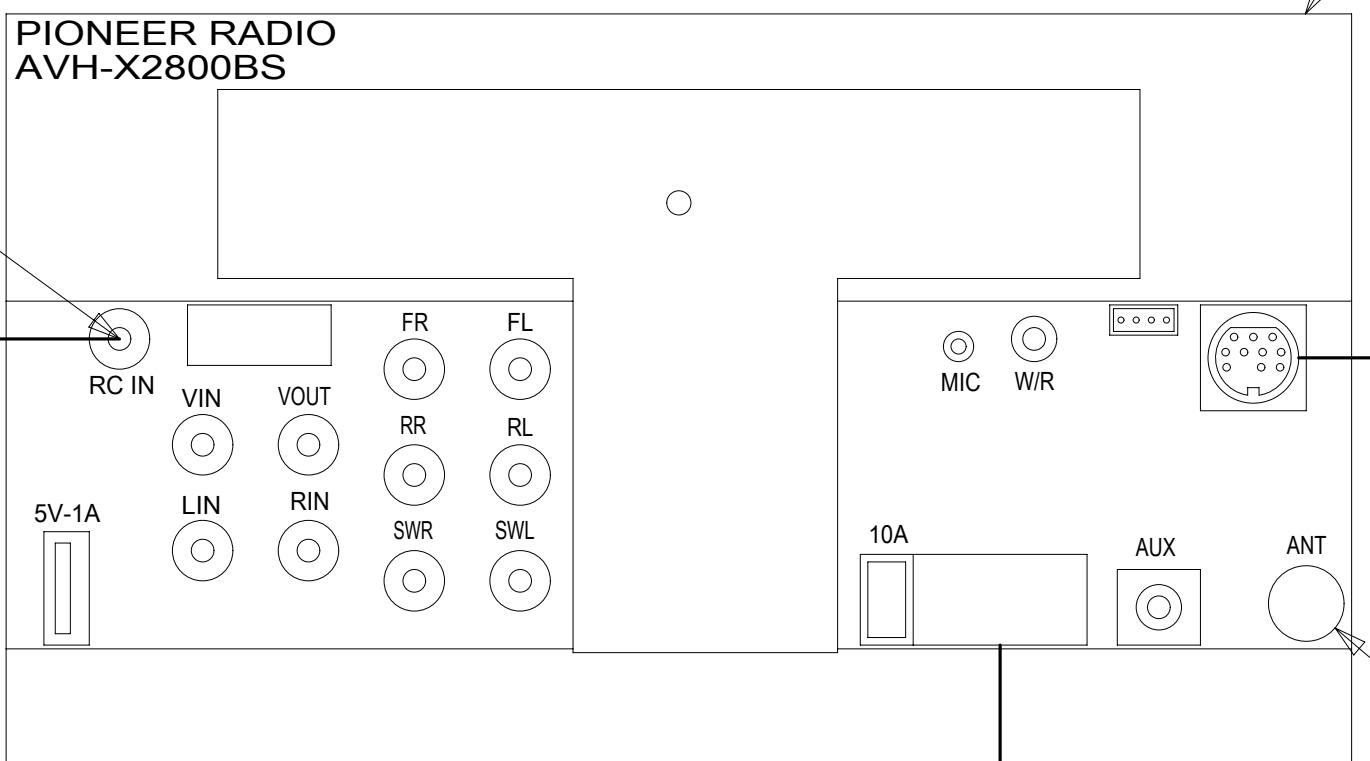
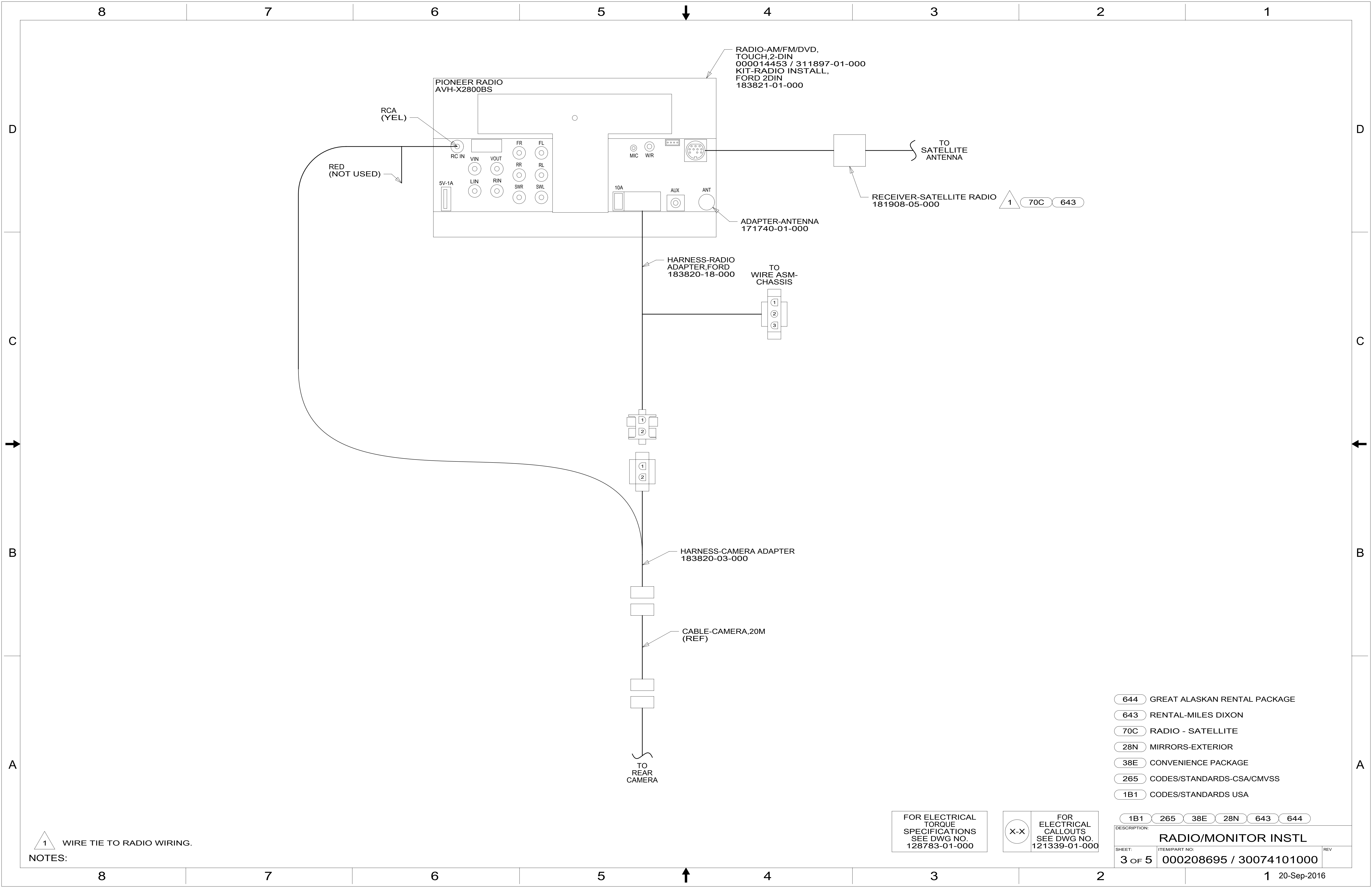
FOR ELECTRICAL TORQUE SPECIFICATIONS SEE DWG NO. 128783-01-000

FOR ELECTRICAL CALLOUTS SEE DWG NO. 121339-01-000

DESCRIPTION:	1B1 265 19V	
<b>RADIO/MONITOR INSTL</b>		
SHEET:	ITEM/PART NO:	REV
2 OF 5	000208695 / 30074101000	

8 7 6 5 4 3 2 1

D  
C  
B  
A



RADIO-AM/FM/DVD,  
TOUCH,2-DIN  
000014453 / 311897-01-000  
KIT-RADIO INSTALL,  
FORD 2DIN  
183821-01-000

TO SATELLITE  
ANTENNA

RECEIVER-SATELLITE RADIO  
181908-05-000

ADAPTER-ANTENNA  
171740-01-000

HARNESS-RADIO  
ADAPTER,FORD  
183820-18-000

TO WIRE ASM-  
CHASSIS

HARNESS-CAMERA ADAPTER  
183820-03-000

CABLE-CAMERA,20M  
(REF)

TO REAR  
CAMERA

RCA (YEL)

RED  
(NOT USED)

1 70C 643

- 644 GREAT ALASKAN RENTAL PACKAGE
- 643 RENTAL-MILES DIXON
- 70C RADIO - SATELLITE
- 28N MIRRORS-EXTERIOR
- 38E CONVENIENCE PACKAGE
- 265 CODES/STANDARDS-CSA/CMVSS
- 1B1 CODES/STANDARDS USA

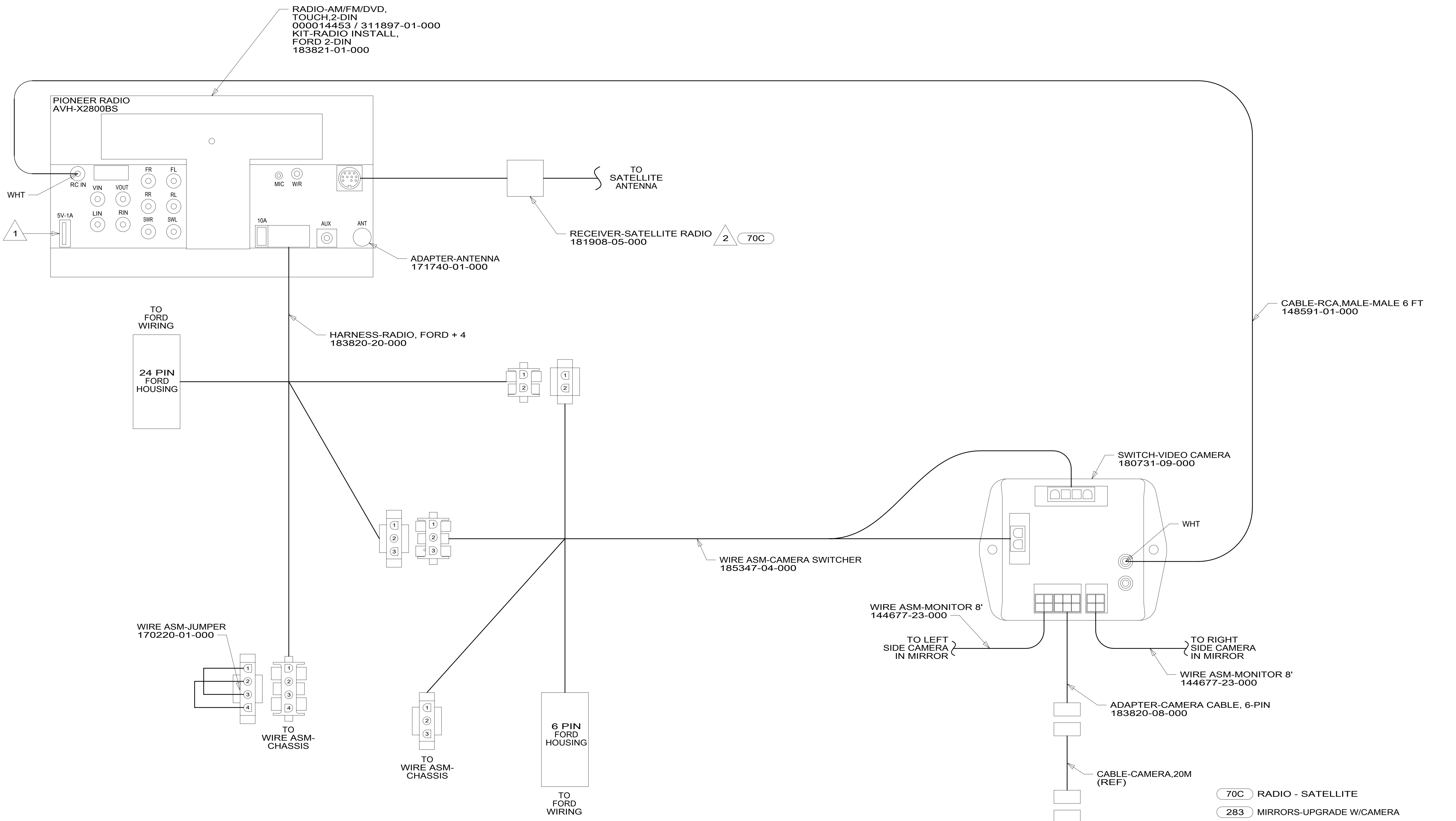
1B1 265 38E 28N 643 644

FOR ELECTRICAL  
TORQUE  
SPECIFICATIONS  
SEE DWG NO.  
128783-01-000

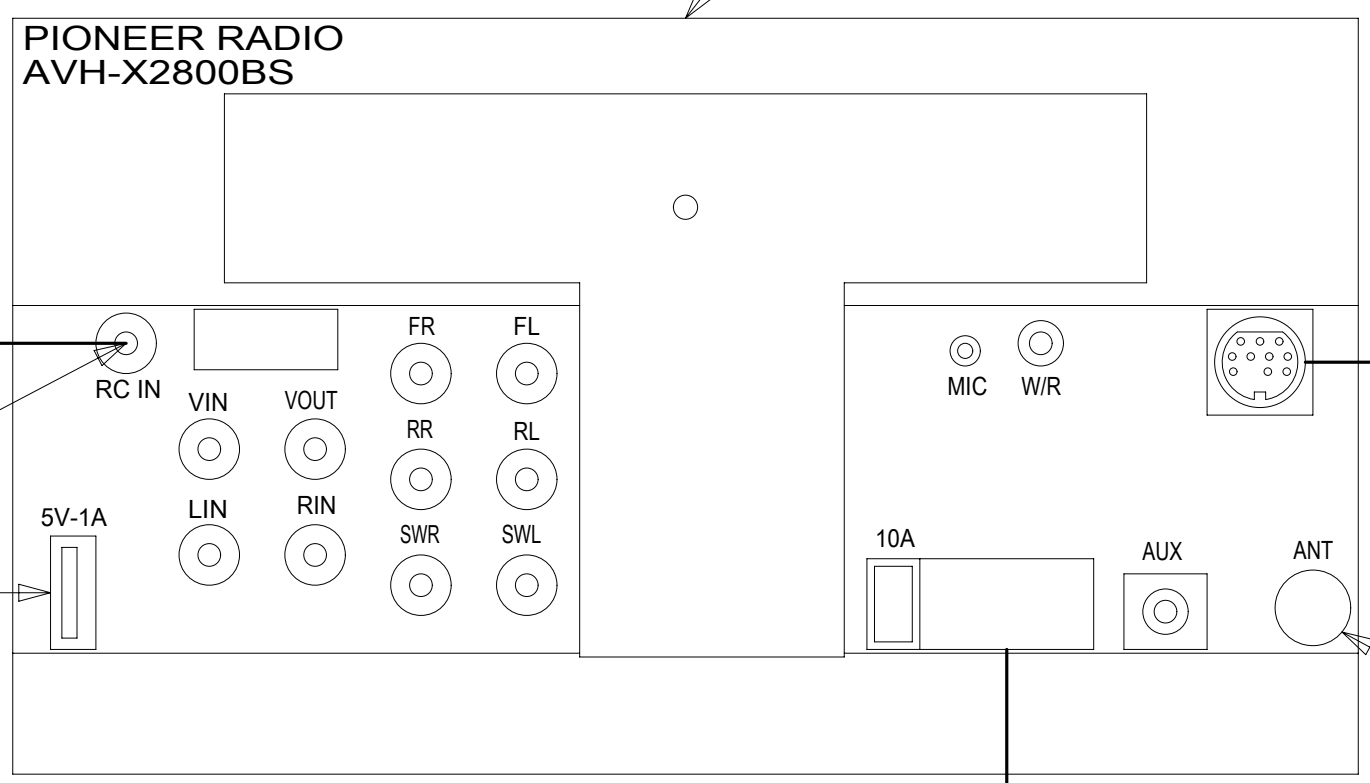
FOR ELECTRICAL  
CALLOUTS  
SEE DWG NO.  
121339-01-000

DESCRIPTION: <b>RADIO/MONITOR INSTL</b>		
SHEET: <b>3 OF 5</b>	ITEM/PART NO: <b>000208695 / 30074101000</b>	REV

NOTES:  
1 WIRE TIE TO RADIO WIRING.



RADIO-AM/FM/DVD,  
TOUCH,2-DIN  
000014453 / 311897-01-000  
KIT-RADIO INSTALL,  
FORD 2-DIN  
183821-01-000



TO SATELLITE ANTENNA

RECEIVER-SATELLITE RADIO  
181908-05-000

ADAPTER-ANTENNA  
171740-01-000

HARNES-RADIO, FORD + 4  
183820-20-000

TO FORD WIRING  
24 PIN FORD HOUSING

CABLE-RCA,MALE-MALE 6 FT  
148591-01-000

SWITCH-VIDEO CAMERA  
180731-09-000

WIRE ASM-CAMERA SWITCHER  
185347-04-000

WIRE ASM-MONITOR 8'  
144677-23-000

TO LEFT SIDE CAMERA IN MIRROR

TO RIGHT SIDE CAMERA IN MIRROR

WIRE ASM-MONITOR 8'  
144677-23-000

ADAPTER-CAMERA CABLE, 6-PIN  
183820-08-000

CABLE-CAMERA,20M (REF)

TO REAR CAMERA

WIRE ASM-JUMPER  
170220-01-000

TO WIRE ASM-CHASSIS

TO WIRE ASM-CHASSIS

6 PIN FORD HOUSING  
TO FORD WIRING

2 WIRE TIE TO RADIO WIRING.

1 PLUG USB CABLE SUPPLIED WITH RADIO INTO LEAD ON BACK OF RADIO MARKED 'USB'. ROUTE CABLE TO THE LEFT OF RADIO. WIRE TIE EXCESS CABLE UNDER DASH IN THE AREA LEFT OF THE RADIO. LEAVE 200 MM OF CABLE IN THE MOTOR COVER BEVERAGE TRAY. MAKE SURE CABLE DOES NOT GET PINCHED BY MOTOR COVER.

NOTES:

FOR ELECTRICAL TORQUE SPECIFICATIONS SEE DWG NO. 128783-01-000

FOR ELECTRICAL CALLOUTS SEE DWG NO. 121339-01-000

- 70C RADIO - SATELLITE
- 283 MIRRORS-UPGRADE W/CAMERA
- 38E CONVENIENCE PACKAGE
- 265 CODES/STANDARDS-CSA/CMVSS
- 1B1 CODES/STANDARDS USA

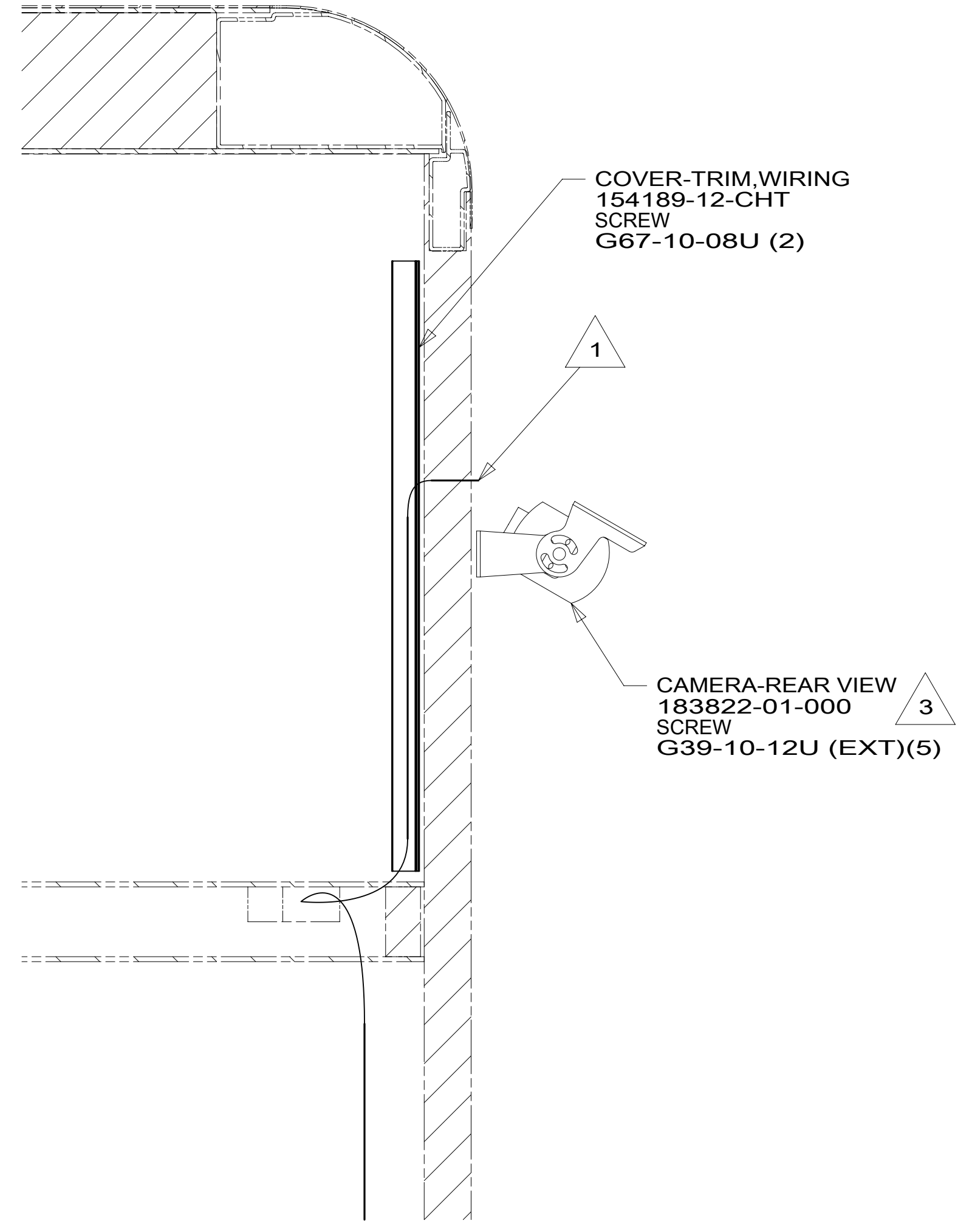
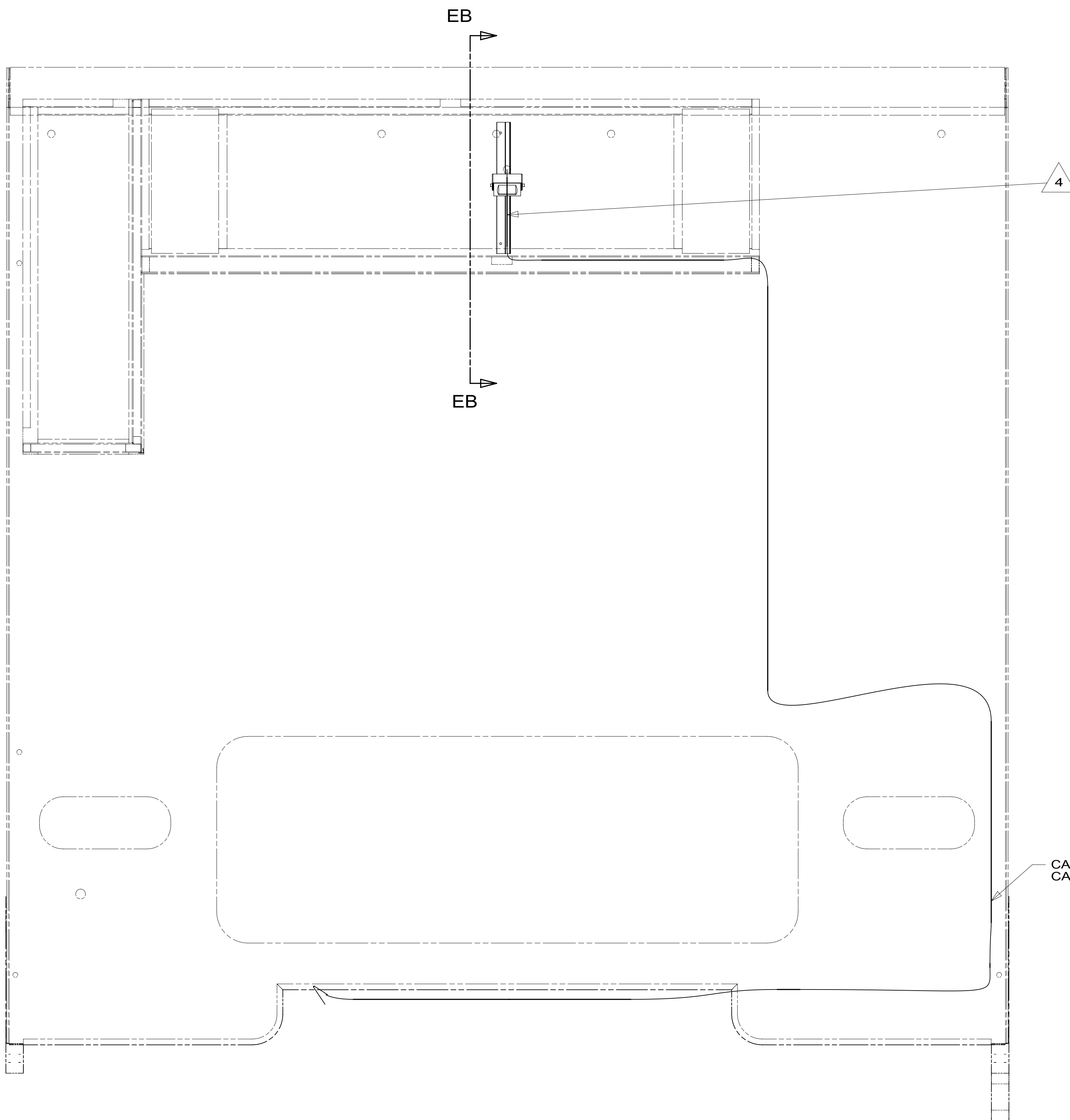
1B1 265 38E 283

DESCRIPTION: <b>RADIO/MONITOR INSTL</b>		
SHEET: 4 OF 5	ITEM/PART NO: 000208695 / 30074101000	REV

8 7 6 5 4 3 2 1

D  
C  
B  
A

D  
C  
B  
A



SECTION EB-EB 38E 643

- NOTES:
- 4 LEAVE CAMERA CABLE IN BOTTOM OF OVHD CABT WITHOUT 38E
  - 3 ADJUST CAMERA AFTER MOUNTING SO BACKWALL IS JUST VISIBLE ON BOTTOM OF THE SCREEN.
  - 2 REAR MONITOR CABLE IS PART OF THE WIRE ASM-CHASSIS.
  - 1 CABLE ROUTED THRU BACKWALL.

- 643 RENTAL-MILES DIXON
- 38E CONVENIENCE PACKAGE
- 265 CODES/STANDARDS-CSA/CMVSS
- 1B1 CODES/STANDARDS USA

FOR ELECTRICAL TORQUE SPECIFICATIONS SEE DWG NO. 128783-01-000

FOR ELECTRICAL CALLOUTS SEE DWG NO. 121339-01-000

DESCRIPTION: <b>RADIO/MONITOR INSTL</b>		
SHEET: 5 OF 5	ITEM/PART NO.: 000208695 / 30074101000	REV