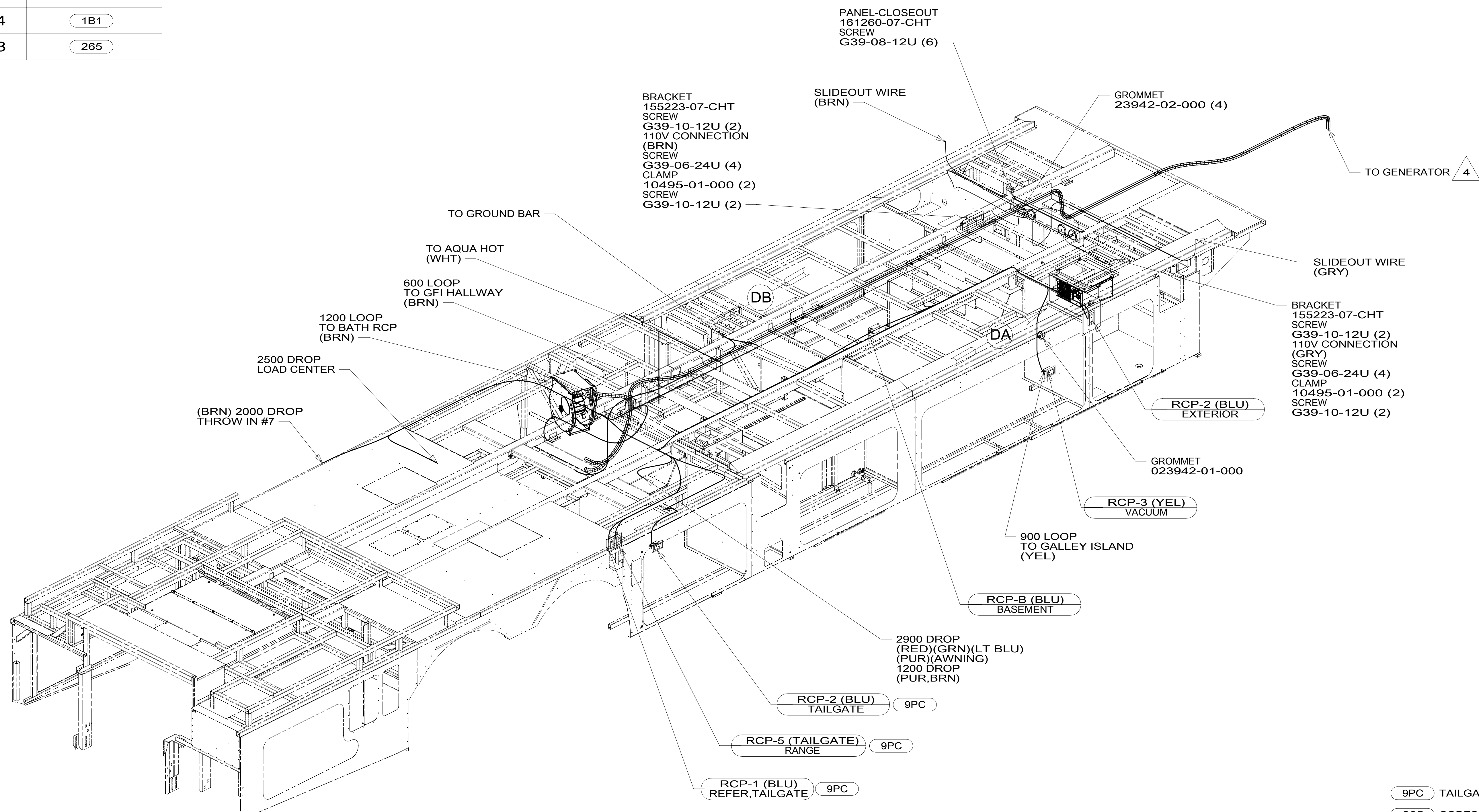


DRAWING NO.	FEATURE
300160-01	-----
300160-14	1B1
300160-18	265



- 4 SEE GENERATOR INSTL FOR ADDITIONAL INFORMATION.
- WIRES THAT REST ON WIRE TRAYS ARE TO BE TIED DOWN WITH WIRE TIE 8343-04-000.
 - CLAMP TO FLOOR SUPPORT TUBES AS NECESSARY WITH CLAMP 10497-01-000.
 - AT MINIMUM ALL WIRES TO BE SUPPORTED AND SECURED PER CODE REQUIREMENTS. USE CLAMP 10495 OR 10497 OR WIRE TIE 8343 OR 108046 AND SCREW G67-XX-XXX OR G56-XX-XXX AS APPROPRIATE FOR INSTALLATION.

NOTES:

- 9PC TAILGATE PACKAGE
- 265 CODES/STANDARDS-CSA/CMVSS
- 1B1 CODES/STANDARDS USA

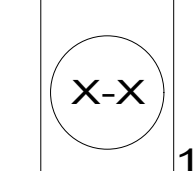
1B1 265

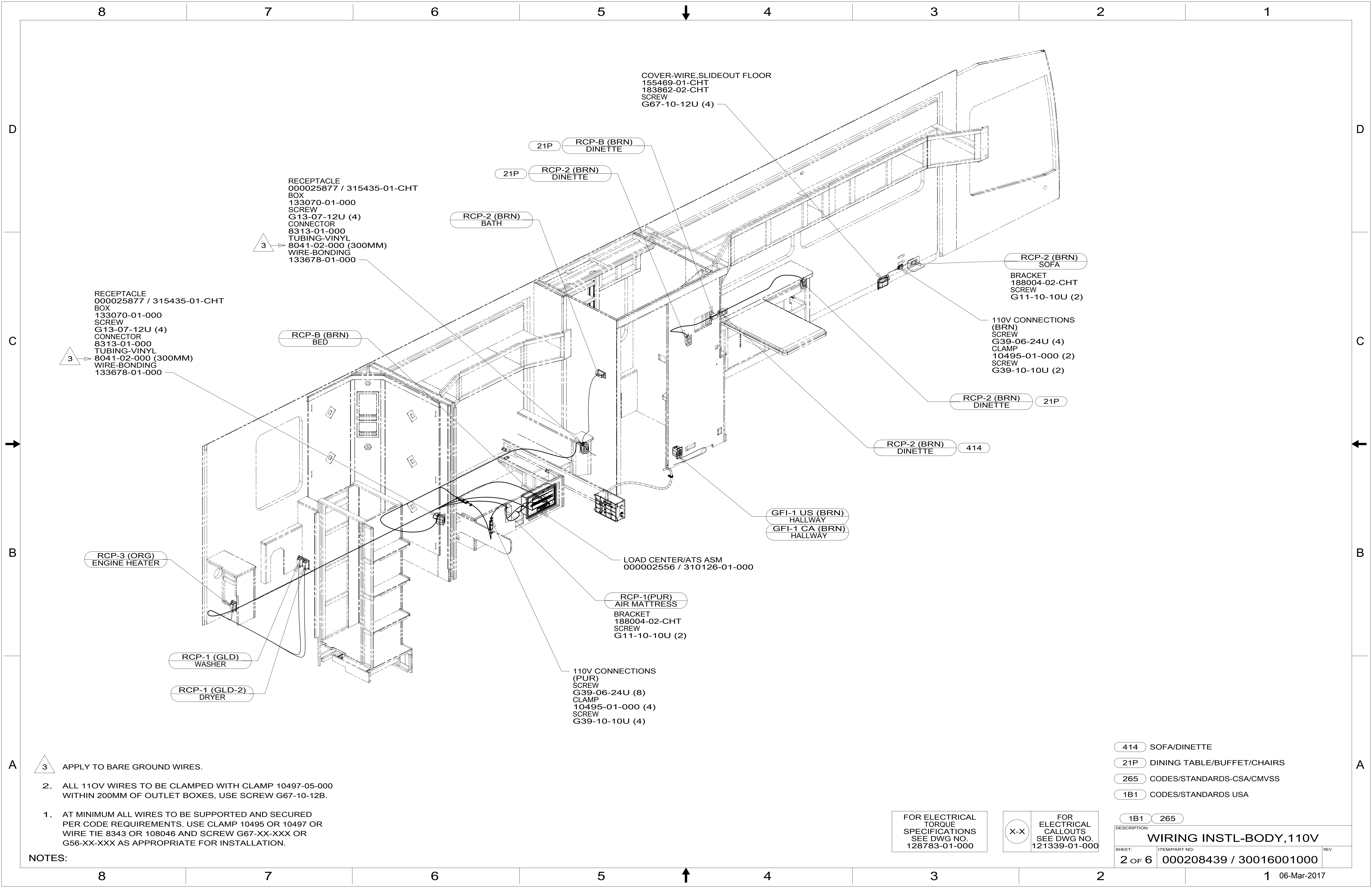
WINNEBAGO
COPYRIGHT 2016 WINNEBAGO INDUSTRIES, INC.

DSNR:	ALL DIMENSIONS ARE IN MILLIMETERS
DIFFR:	MATERIAL:
UNSPECIFIED TOLERANCES:	WEIGHT: (LBS)
WHOLE DIM (X) : 3	FIRST USED: 16 R45RL
ONE-PLACE (X.X) : 1.5	DESCRIPTION: WIRING INSTL-BODY, 110V
TWO-PLACE (X.XX) : 0.50	SHEET: 1 OF 6
ANGLE : 1°	ITEM/PART NO: 000208439 / 30016001000
REFER TO ES0018 FOR FASTENER TIGHTENING GUIDELINES	REF: 1 06-Mar-2017

FOR ELECTRICAL TORQUE SPECIFICATIONS SEE DWG NO. 128783-01-000

FOR ELECTRICAL CALLOUTS SEE DWG NO. 121339-01-000





COVER-WIRE, SLIDEOUT FLOOR
 155469-01-CHT
 183862-02-CHT
 SCREW
 G67-10-12U (4)

21P RCP-B (BRN) DINETTE

21P RCP-2 (BRN) DINETTE

RCP-2 (BRN) BATH

RCP-2 (BRN) SOFA

BRACKET
 188004-02-CHT
 SCREW
 G11-10-10U (2)

110V CONNECTIONS (BRN)
 SCREW
 G39-06-24U (4)
 CLAMP
 10495-01-000 (2)
 SCREW
 G39-10-10U (2)

RCP-2 (BRN) DINETTE 21P

RCP-2 (BRN) DINETTE 414

GFI-1 US (BRN) HALLWAY
 GFI-1 CA (BRN) HALLWAY

LOAD CENTER/ATS ASM
 000002556 / 310126-01-000

RCP-1(PUR) AIR MATTRESS
 BRACKET
 188004-02-CHT
 SCREW
 G11-10-10U (2)

110V CONNECTIONS (PUR)
 SCREW
 G39-06-24U (8)
 CLAMP
 10495-01-000 (4)
 SCREW
 G39-10-10U (4)

RECEPTACLE
 000025877 / 315435-01-CHT
 BOX
 133070-01-000
 SCREW
 G13-07-12U (4)
 CONNECTOR
 8313-01-000
 TUBING-VINYL
 8041-02-000 (300MM)
 WIRE-BONDING
 133678-01-000

3

RCP-B (BRN) BED

RECEPTACLE
 000025877 / 315435-01-CHT
 BOX
 133070-01-000
 SCREW
 G13-07-12U (4)
 CONNECTOR
 8313-01-000
 TUBING-VINYL
 8041-02-000 (300MM)
 WIRE-BONDING
 133678-01-000

3

RCP-3 (ORG) ENGINE HEATER

RCP-1 (GLD) WASHER

RCP-1 (GLD-2) DRYER

3 APPLY TO BARE GROUND WIRES.

2. ALL 110V WIRES TO BE CLAMPED WITH CLAMP 10497-05-000 WITHIN 200MM OF OUTLET BOXES, USE SCREW G67-10-12B.

1. AT MINIMUM ALL WIRES TO BE SUPPORTED AND SECURED PER CODE REQUIREMENTS. USE CLAMP 10495 OR 10497 OR WIRE TIE 8343 OR 108046 AND SCREW G67-XX-XXX OR G56-XX-XXX AS APPROPRIATE FOR INSTALLATION.

NOTES:

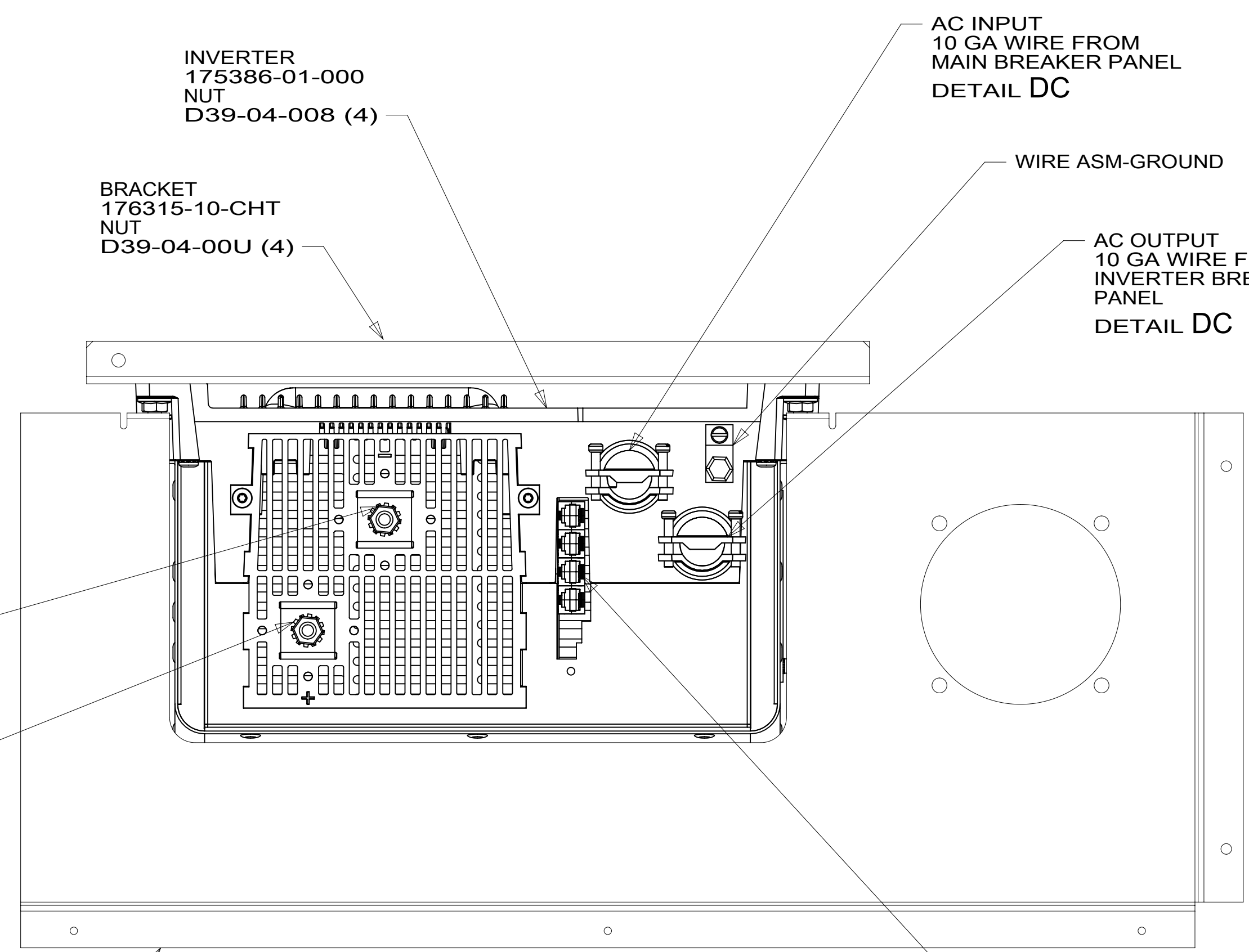
- 414 SOFA/DINETTE
- 21P DINING TABLE/BUFFET/CHAIRS
- 265 CODES/STANDARDS-CSA/CMVSS
- 1B1 CODES/STANDARDS USA

FOR ELECTRICAL TORQUE SPECIFICATIONS SEE DWG NO. 128783-01-000

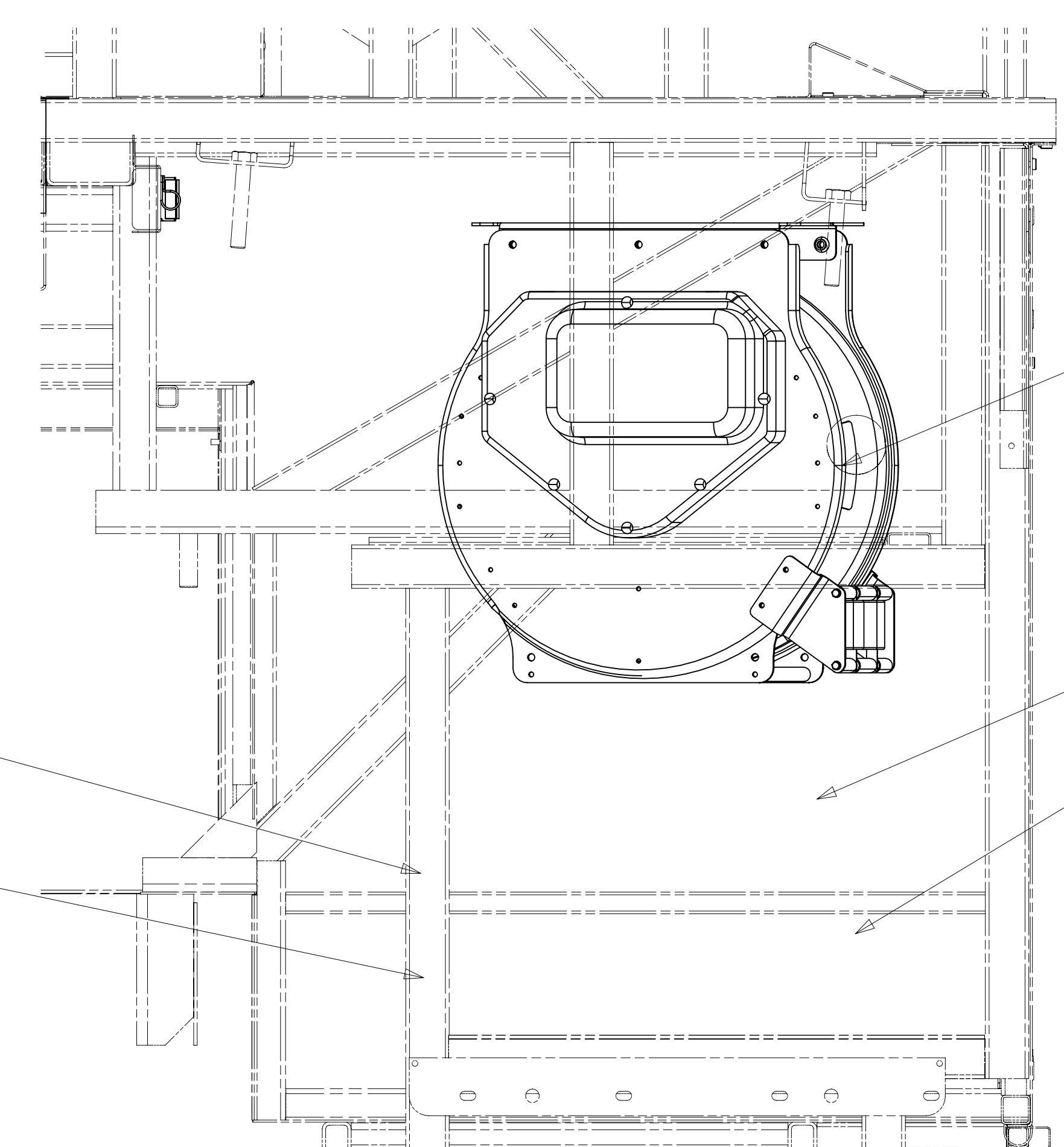
FOR ELECTRICAL CALLOUTS SEE DWG NO. 121339-01-000

DESCRIPTION:		1B1 265	
WIRING INSTL-BODY, 110V			
SHEET:	ITEM/PART NO.:	REV:	
2 OF 6	000208439 / 30016001000		

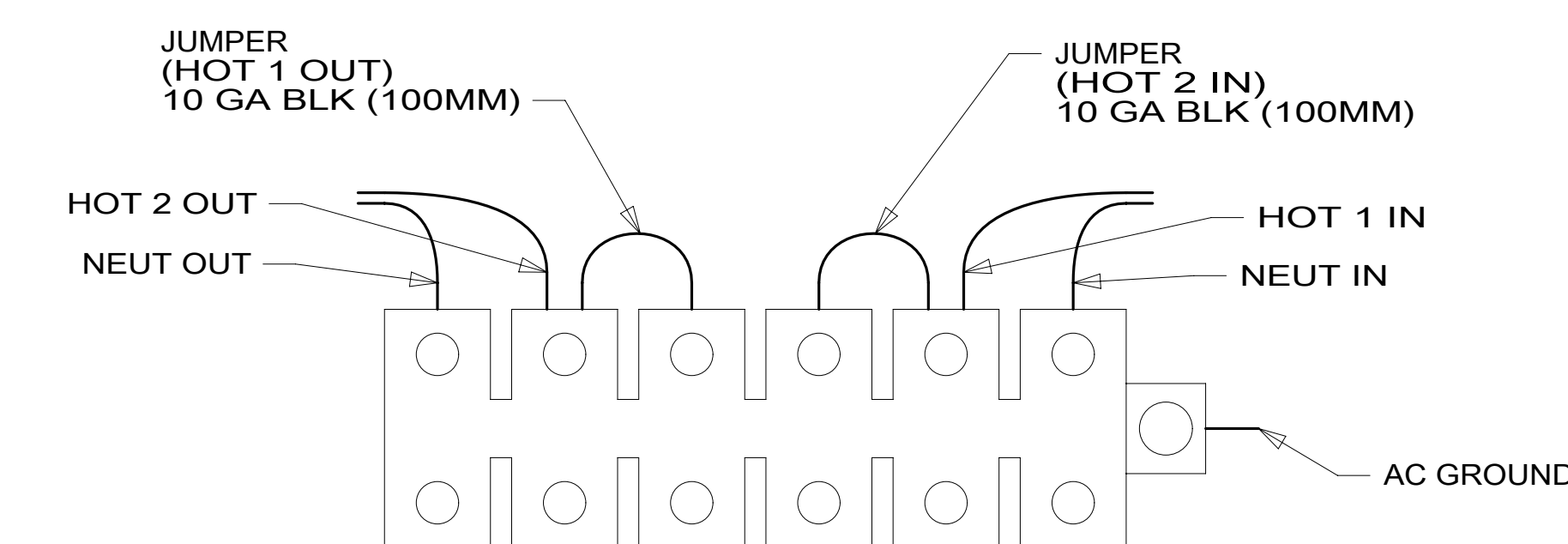
8 7 6 5 4 3 2 1



VIEW DA



VIEW DB



DETAIL DC

- NOTES:
- 4 TORQUE TO 10-12 FT LBS.
 - 3 INSERT BOLT FROM BOTTOM OF COMPARTMENT.
 - 2 SEE BATTERY INSTL FOR ADDITIONAL INFORMATION.
 - 1 SEE LOAD CENTER/ATS ASM FOR ADDITIONAL INFORMATION.

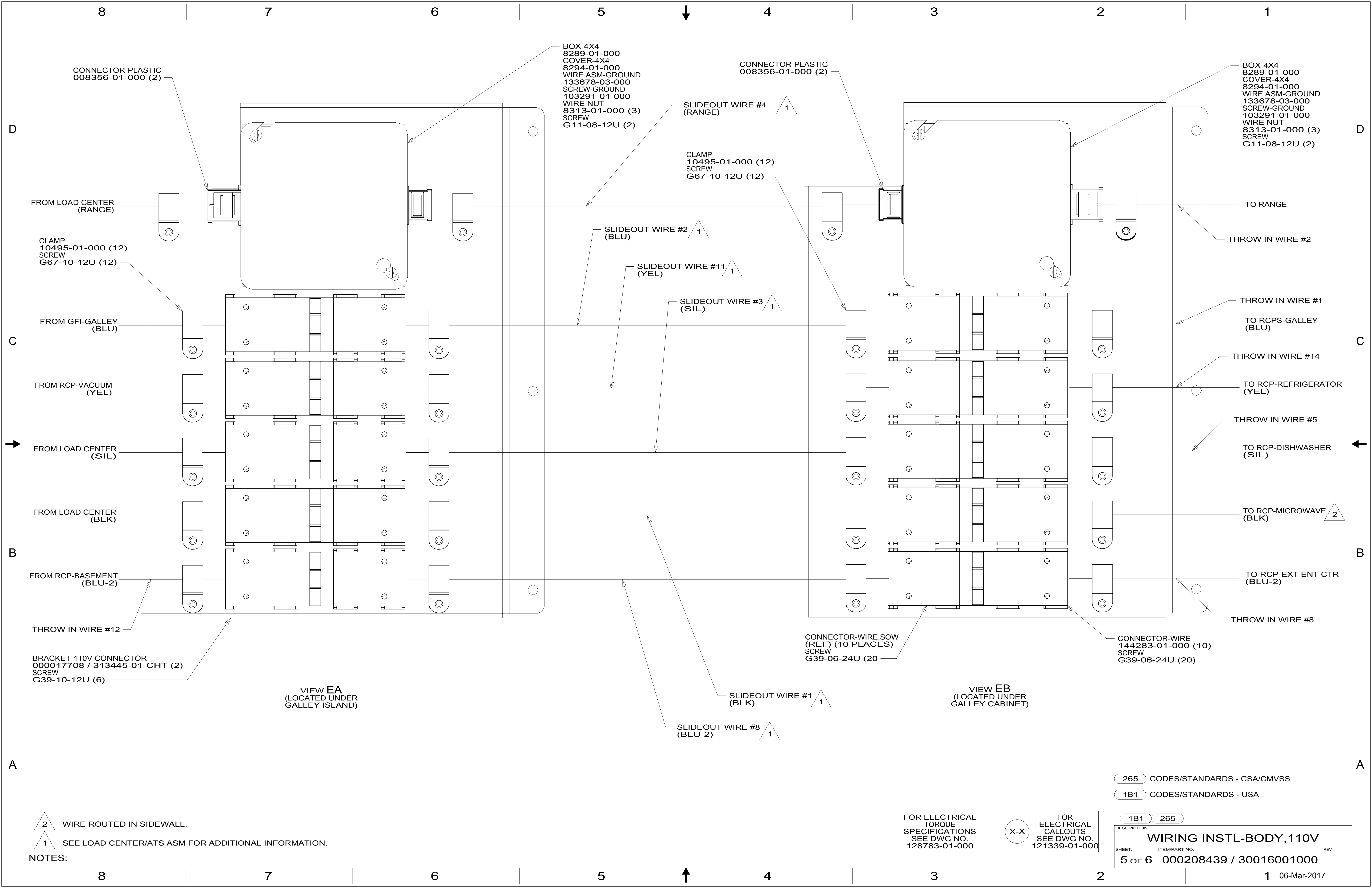
- 265 CODES/STANDARDS-CSA/CMVSS
- 1B1 CODES/STANDARDS USA

FOR ELECTRICAL
TORQUE
SPECIFICATIONS
SEE DWG NO.
128783-01-000

FOR
ELECTRICAL
CALLOUTS
SEE DWG NO.
121339-01-000

DESCRIPTION:	
WIRING INSTL-BODY, 110V	
SHEET:	ITEM/PART NO. REV
4 OF 6	000208439 / 30016001000

8 7 6 5 4 3 2 1 06-Mar-2017



BOX-4X4
8289-01-000
COVER-4X4
8294-01-000
WIRE ASM-GROUND
133678-03-000
SCREW-GROUND
103291-01-000
WIRE NUT
8313-01-000 (3)
SCREW
G11-08-12U (2)

CONNECTOR-PLASTIC
008356-01-000 (2)

BOX-4X4
8289-01-000
COVER-4X4
8294-01-000
WIRE ASM-GROUND
133678-03-000
SCREW-GROUND
103291-01-000
WIRE NUT
8313-01-000 (3)
SCREW
G11-08-12U (2)

CONNECTOR-PLASTIC
008356-01-000 (2)

FROM LOAD CENTER
(RANGE)

CLAMP
10495-01-000 (12)
SCREW
G67-10-12U (12)

FROM GFI-GALLEY
(BLU)

FROM RCP-VACUUM
(YEL)

FROM LOAD CENTER
(SIL)

FROM LOAD CENTER
(BLK)

FROM RCP-BASEMENT
(BLU-2)

THROW IN WIRE #12

BRACKET-110V CONNECTOR
000017708 / 313445-01-CHT (2)
SCREW
G39-10-12U (6)

VIEW EA
(LOCATED UNDER
GALLEY ISLAND)

SLIDEOUT WIRE #4
(RANGE) 1

CLAMP
10495-01-000 (12)
SCREW
G67-10-12U (12)

SLIDEOUT WIRE #2
(BLU) 1

SLIDEOUT WIRE #11
(YEL) 1

SLIDEOUT WIRE #3
(SIL) 1

CONNECTOR-WIRE,SOW
(REF) (10 PLACES)
SCREW
G39-06-24U (20)

SLIDEOUT WIRE #1
(BLK) 1

SLIDEOUT WIRE #8
(BLU-2) 1

VIEW EB
(LOCATED UNDER
GALLEY CABINET)

TO RANGE

THROW IN WIRE #2

THROW IN WIRE #1

TO RCPS-GALLEY
(BLU)

THROW IN WIRE #14

TO RCP-REFRIGERATOR
(YEL)

THROW IN WIRE #5

TO RCP-DISHWASHER
(SIL)

TO RCP-MICROWAVE 2

TO RCP-EXT ENT CTR
(BLU-2)

THROW IN WIRE #8

CONNECTOR-WIRE
144283-01-000 (10)
SCREW
G39-06-24U (20)

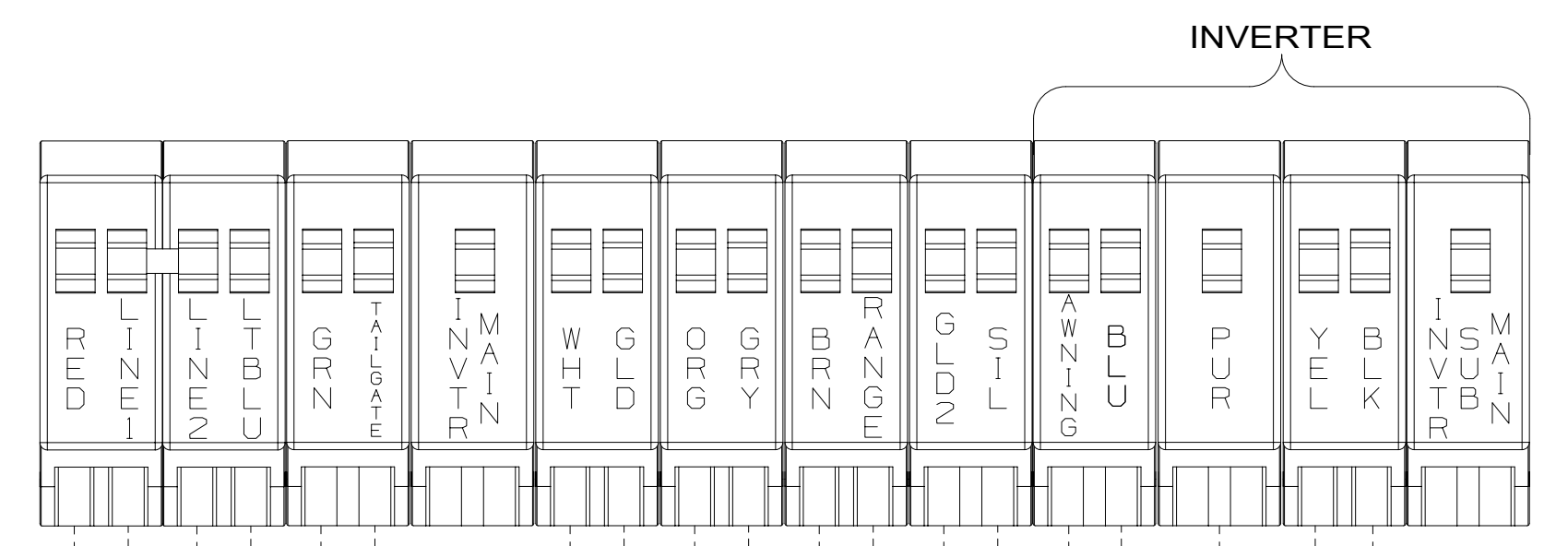
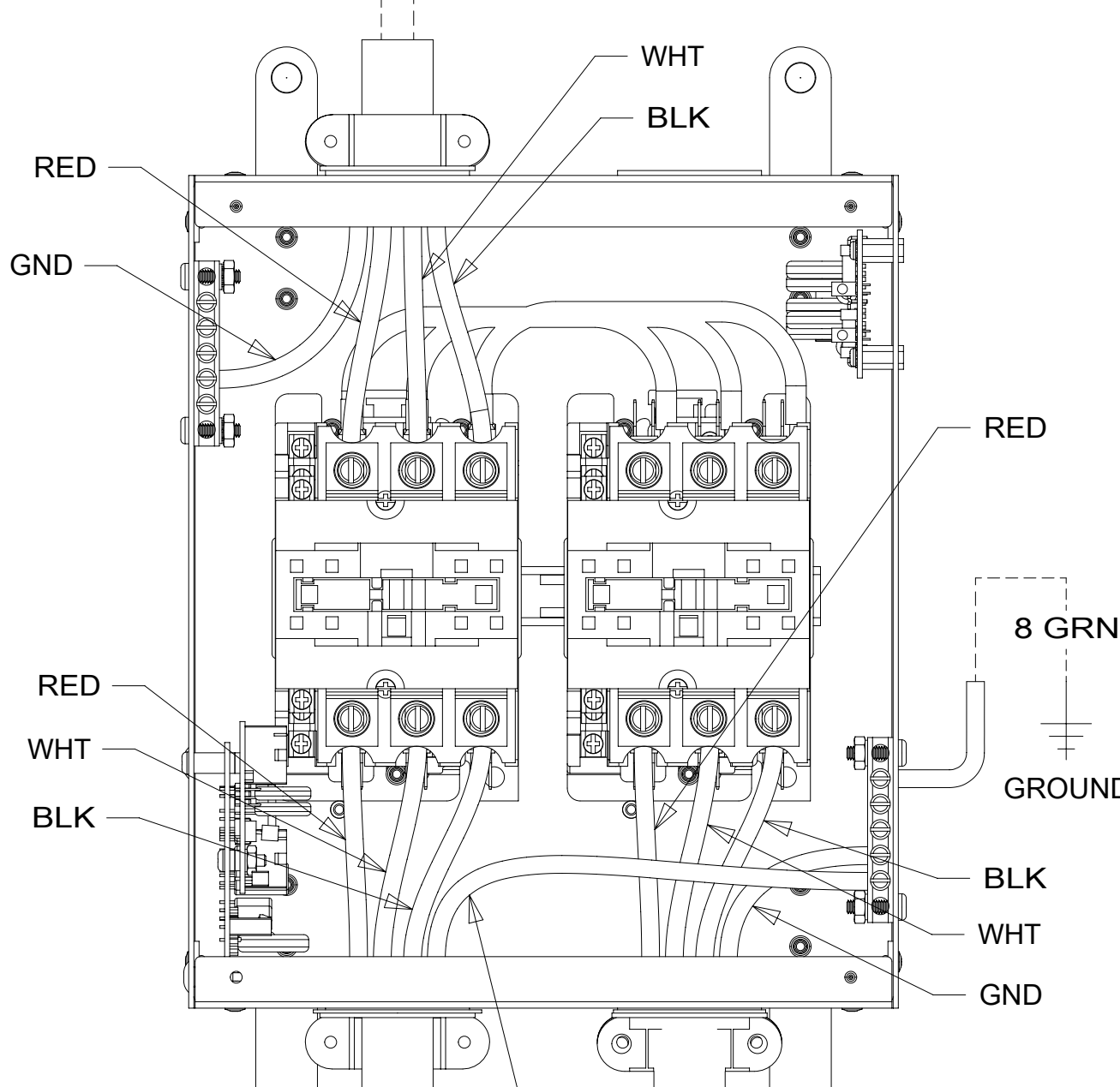
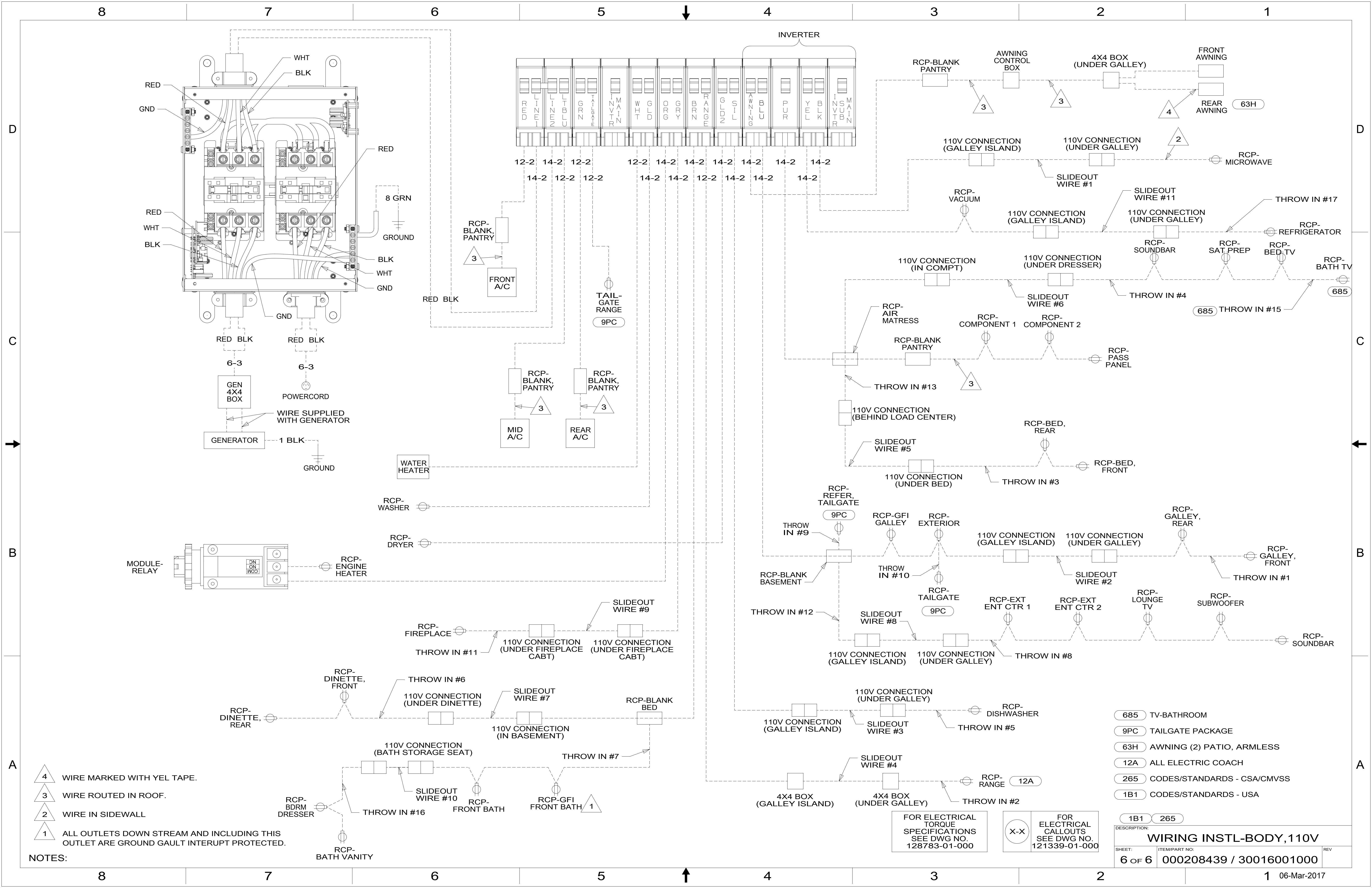
265 CODES/STANDARDS - CSA/CMVSS
1B1 CODES/STANDARDS - USA

2 WIRE ROUTED IN SIDEWALL.
1 SEE LOAD CENTER/ATS ASM FOR ADDITIONAL INFORMATION.

FOR ELECTRICAL
TORQUE
SPECIFICATIONS
SEE DWG NO.
128783-01-000

FOR ELECTRICAL
CALLOUTS
SEE DWG NO.
121339-01-000

DESCRIPTION:	
WIRING INSTL-BODY, 110V	
SHEET:	ITEM/PART NO:
5 OF 6	000208439 / 30016001000
REV	
	06-Mar-2017



- NOTES:
- 4 WIRE MARKED WITH YEL TAPE.
 - 3 WIRE ROUTED IN ROOF.
 - 2 WIRE IN SIDEWALL
 - 1 ALL OUTLETS DOWN STREAM AND INCLUDING THIS OUTLET ARE GROUND GAULT INTERRUPT PROTECTED.

FOR ELECTRICAL TORQUE SPECIFICATIONS SEE DWG NO. 128783-01-000

FOR ELECTRICAL CALLOUTS SEE DWG NO. 121339-01-000

- 685 TV-BATHROOM
- 9PC TAILGATE PACKAGE
- 63H AWNING (2) PATIO, ARMLESS
- 12A ALL ELECTRIC COACH
- 265 CODES/STANDARDS - CSA/CMVSS
- 1B1 CODES/STANDARDS - USA

DESCRIPTION: WIRING INSTL-BODY, 110V		
SHEET: 6 OF 6	ITEM/PART NO.: 000208439 / 30016001000	REV
06-Mar-2017		