

- NOTES:**
- AT MINIMUM ALL WIRES TO BE SUPPORTED AND SECURED PER CODE REQUIREMENTS. USE CLAMP 10495 OR 10497 OR WIRE TIE 8343 OR 108046 AND SCREW G67-XX-XXX OR G56-XX-XXX AS APPROPRIATE FOR INSTALLATION.
 - ROUTE TANK SENSOR WIRES SO THEY DO NOT PASS OVER SENSORS. USE WIRE TIE MOUNT 155366-01-000 AND WIRE TIE 8343-01-000 AS NEEDED. TANK SURFACE MUST BE CLEANED USING ISOPROPYL ALCOHOL AND PRIMED WITH PRIMER 94.
 - ADD CONDUIT TO COVER CAPILLARY TUBE COMPLETELY. CLAMP OR WIRE TIE TO FRAME TUBES.

FOR ELECTRICAL TORQUE SPECIFICATIONS SEE DWG NO. 128783-01-000

FOR ELECTRICAL CALLOUTS SEE DWG NO. 121339-01-000

- 9PC TAILGATE PACKAGE
- 9PA TAILGATE PACKAGE WITHOUT
- 282 SOLAR PANEL - 100 WATT
- 265 CODES/STANDARDS-CSA/CMVSS
- 1B1 CODES/STANDARDS USA

WINNEBAGO
COPYRIGHT 2016 WINNEBAGO INDUSTRIES, INC.

DSNR:	ALL DIMENSIONS ARE IN MILLIMETERS
DFFR:	
UNSPECIFIED TOLERANCES:	MATERIAL:
WHOLE DIM (X) ± 3	
ONE-PLACE (X.X) ± 1.5	
TWO-PLACE (X.XX) ± 0.50	
ANGLE ± 1°	
REFER TO ES0018 FOR FASTENER TIGHTENING GUIDELINES	WEIGHT: (LBS) FIRST USED: 16 R42QD
DESCRIPTION: WIRING INSTL-BODY, 12V	
SHEET: 1 OF 9	ITEM/PART NO: 000208433 / 30009901000
REF:	1 20-Sep-2016

D

D

C

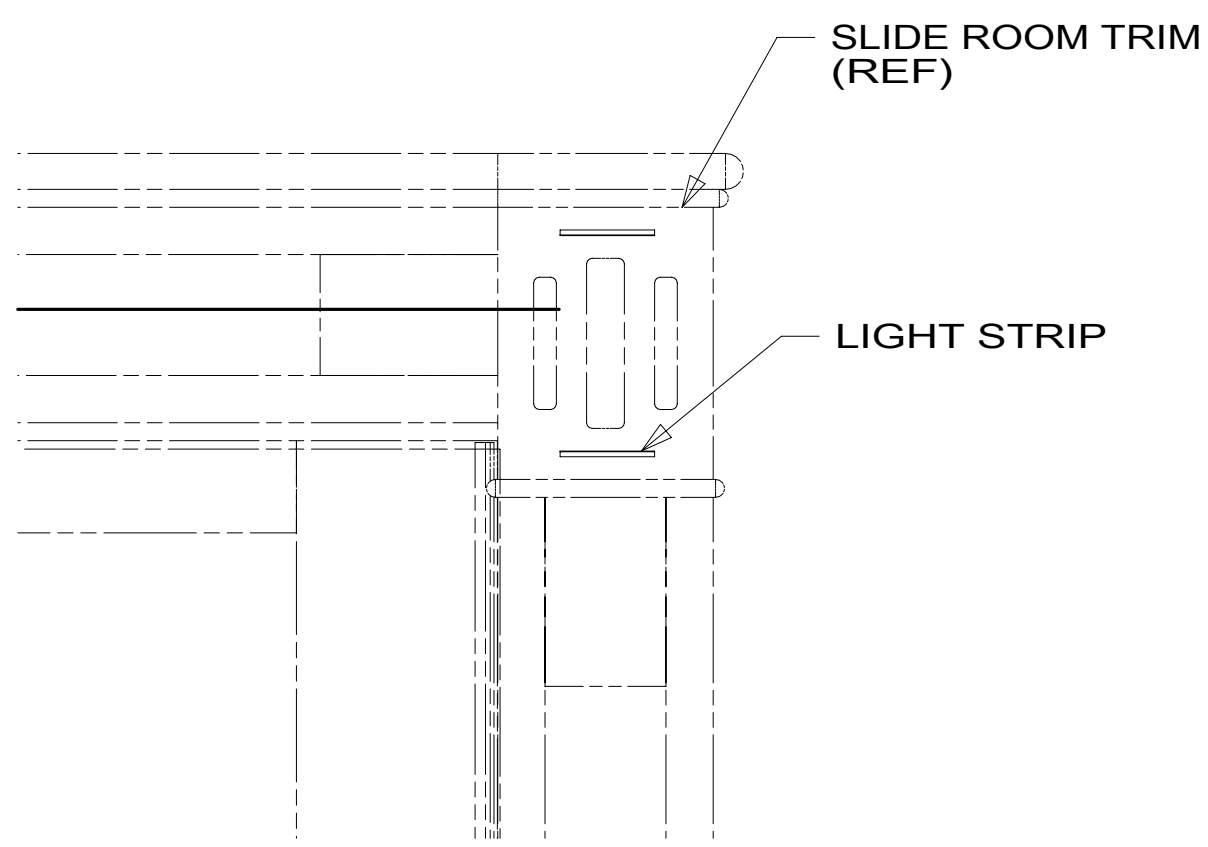
C

B

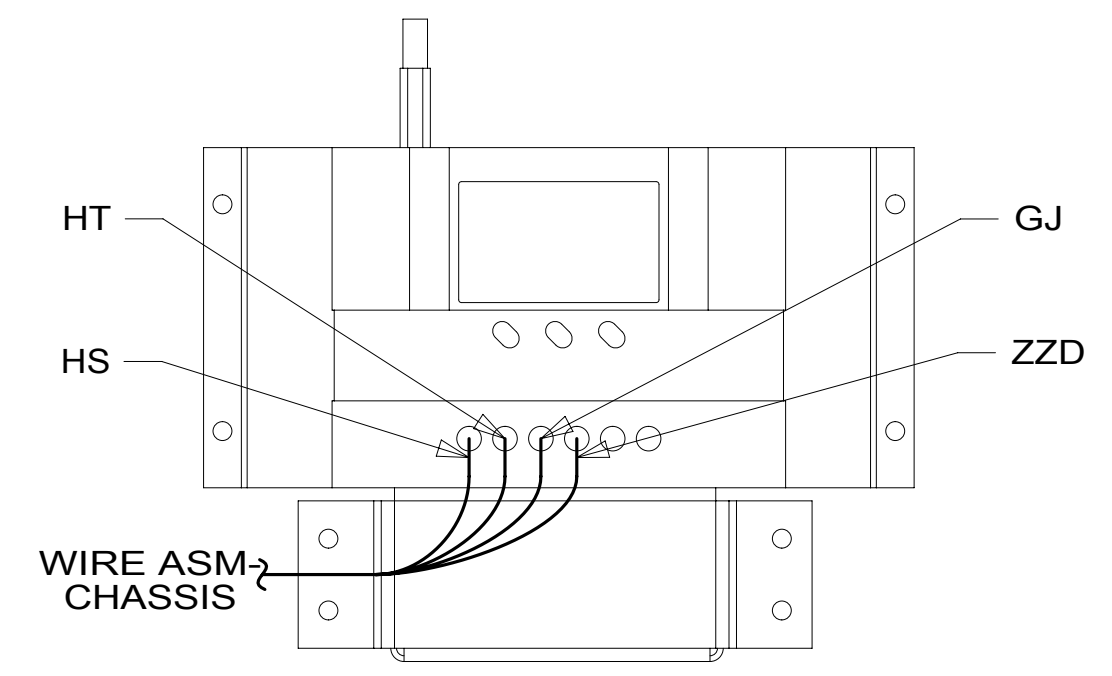
B

A

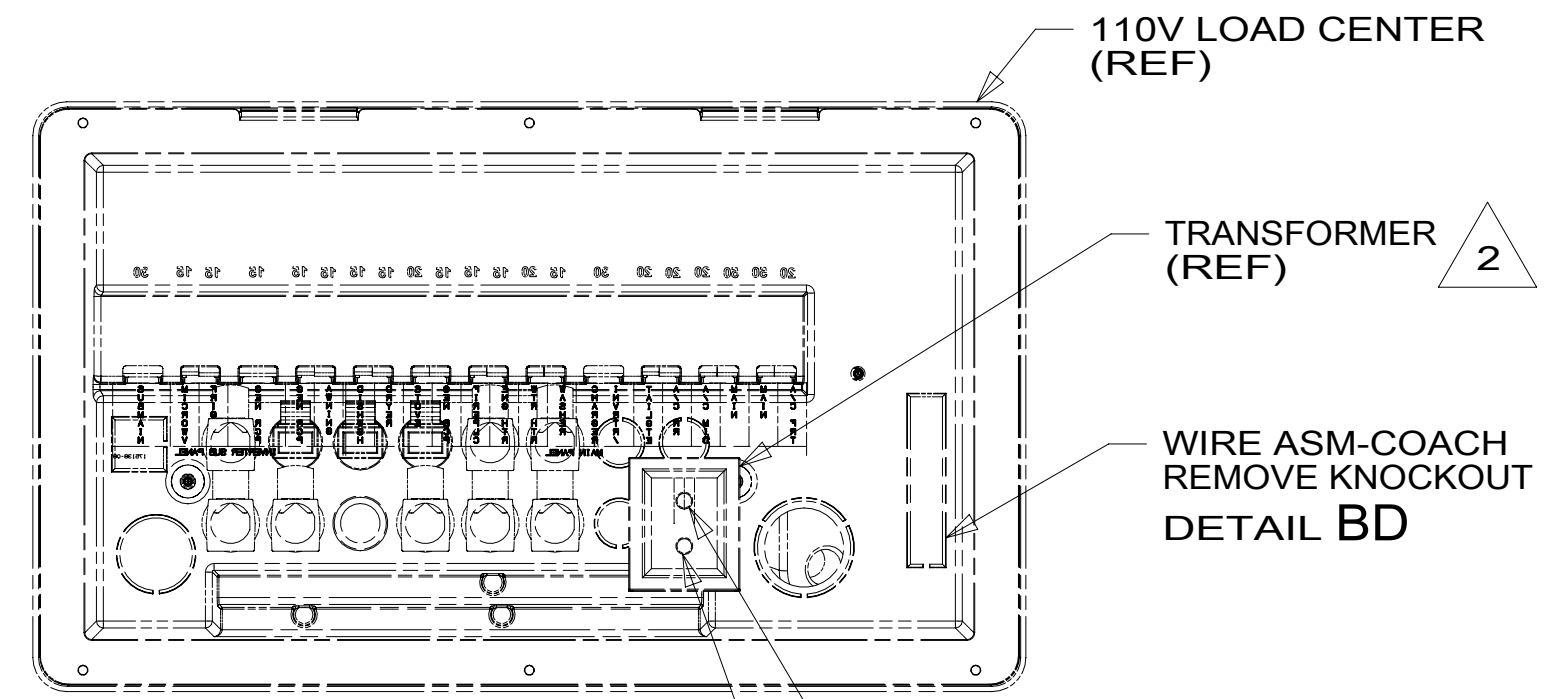
A



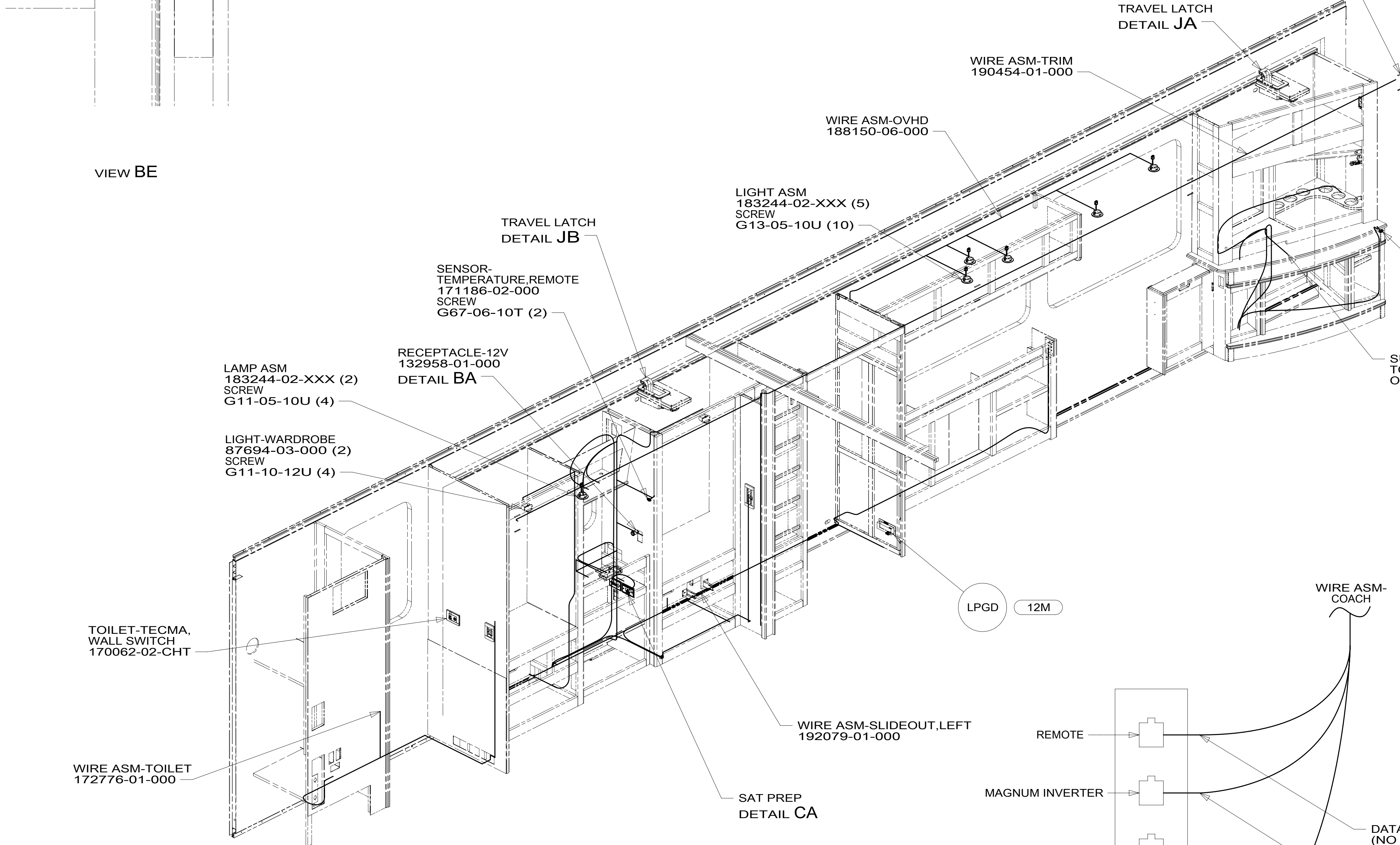
VIEW BE



VIEW BC



VIEW BB



DETAIL BD

FOR ELECTRICAL TORQUE SPECIFICATIONS SEE DWG NO. 128783-01-000

FOR ELECTRICAL CALLOUTS SEE DWG NO. 121339-01-000

- (25N) HOME THEATER SOUNDBAR SYSTEM
- (12M) LPG SYSTEM
- (265) CODES/STANDARDS-CSA/CMVSS
- (1B1) CODES/STANDARDS USA

(1B1) (265)

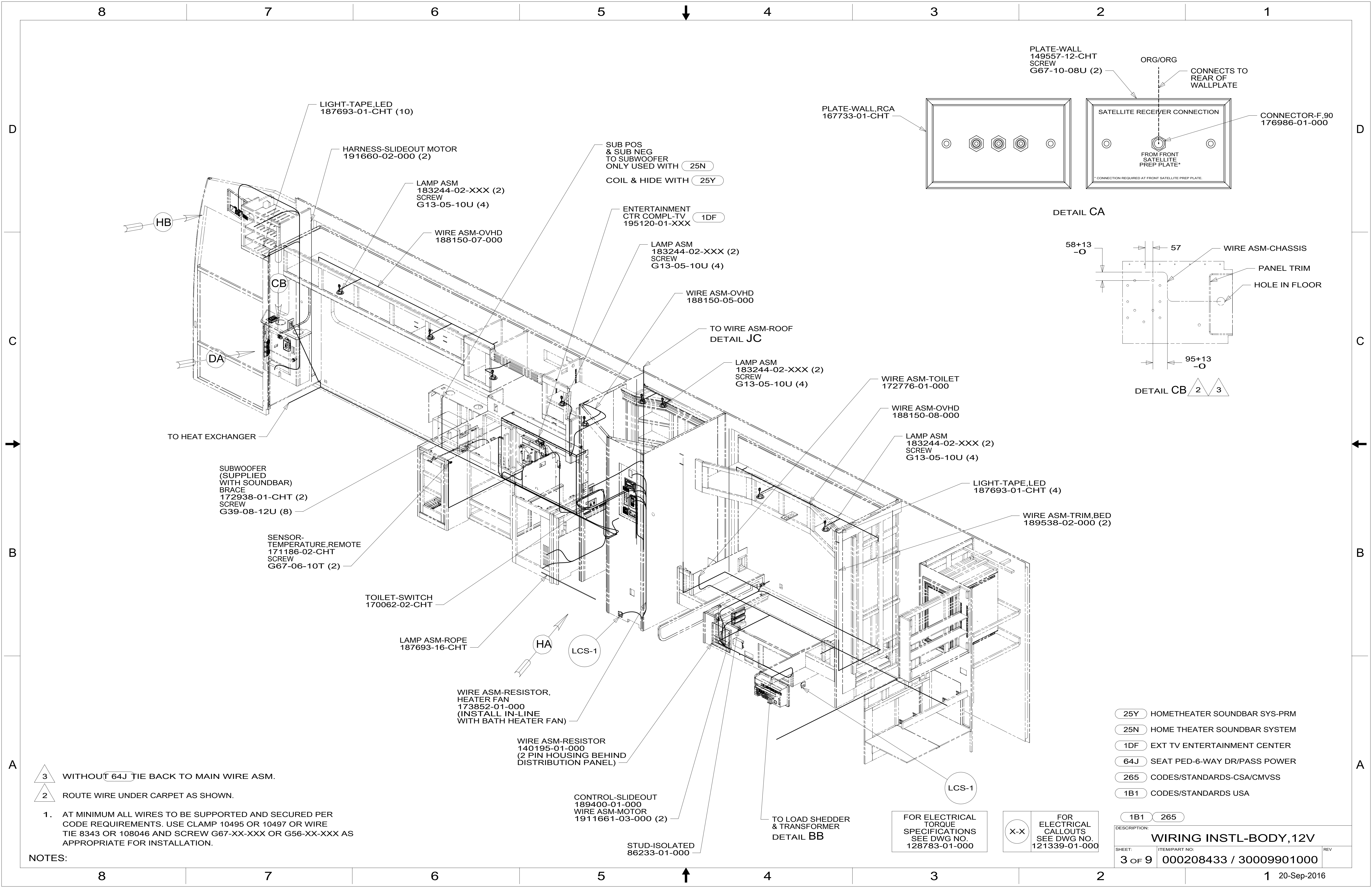
DESCRIPTION:
WIRING INSTL-BODY, 12V

SHEET: 2 OF 9 ITEM/PART NO.: 000208433 / 30009901000 REV

2 SEE LOAD CENTER/ATS ASM FOR ADDITIONAL INFORMATION.

1. AT MINIMUM ALL WIRES TO BE SUPPORTED AND SECURED PER CODE REQUIREMENTS. USE CLAMP 10495 OR 10497 OR WIRE TIE 8343 OR 108046 AND SCREW G67-XX-XXX OR G56-XX-XXX AS APPROPRIATE FOR INSTALLATION.

NOTES:



LIGHT-TAPE,LED 187693-01-CHT (10)

HARNES-SLIDEOUT MOTOR 191660-02-000 (2)

LAMP ASM 183244-02-XXX (2) SCREW G13-05-10U (4)

WIRE ASM-OVHD 188150-07-000

ENTERTAINMENT CTR COMPL-TV 195120-01-XXX 1DF

LAMP ASM 183244-02-XXX (2) SCREW G13-05-10U (4)

WIRE ASM-OVHD 188150-05-000

TO WIRE ASM-ROOF DETAIL JC

LAMP ASM 183244-02-XXX (2) SCREW G13-05-10U (4)

WIRE ASM-TOILET 172776-01-000

WIRE ASM-OVHD 188150-08-000

LAMP ASM 183244-02-XXX (2) SCREW G13-05-10U (4)

LIGHT-TAPE,LED 187693-01-CHT (4)

WIRE ASM-TRIM,BED 189538-02-000 (2)

TO HEAT EXCHANGER

SUBWOOFER (SUPPLIED WITH SOUNDBAR) BRACE 172938-01-CHT (2) SCREW G39-08-12U (8)

SENSOR-TEMPERATURE,REMOTE 171186-02-CHT SCREW G67-06-10T (2)

TOILET-SWITCH 170062-02-CHT

LAMP ASM-ROPE 187693-16-CHT

HA

LCS-1

WIRE ASM-RESISTOR, HEATER FAN 173852-01-000 (INSTALL IN-LINE WITH BATH HEATER FAN)

WIRE ASM-RESISTOR 140195-01-000 (2 PIN HOUSING BEHIND DISTRIBUTION PANEL)

CONTROL-SLIDEOUT 189400-01-000 WIRE ASM-MOTOR 1911661-03-000 (2)

STUD-ISOLATED 86233-01-000

TO LOAD SHEDDER & TRANSFORMER DETAIL BB

LCS-1

PLATE-WALL, RCA 167733-01-CHT

PLATE-WALL 149557-12-CHT SCREW G67-10-08U (2)

CONNECTS TO REAR OF WALLPLATE

SATELLITE RECEIVER CONNECTION

CONNECTOR-F,90 176986-01-000

FROM FRONT SATELLITE PREP PLATE*

*CONNECTION REQUIRED AT FRONT SATELLITE PREP PLATE

DETAIL CA

58+13 -O

57

WIRE ASM-CHASSIS

PANEL TRIM

HOLE IN FLOOR

95+13 -O

DETAIL CB 2 3

- 3 WITHOUT 64J TIE BACK TO MAIN WIRE ASM.
- 2 ROUTE WIRE UNDER CARPET AS SHOWN.

1. AT MINIMUM ALL WIRES TO BE SUPPORTED AND SECURED PER CODE REQUIREMENTS. USE CLAMP 10495 OR 10497 OR WIRE TIE 8343 OR 108046 AND SCREW G67-XX-XXX OR G56-XX-XXX AS APPROPRIATE FOR INSTALLATION.

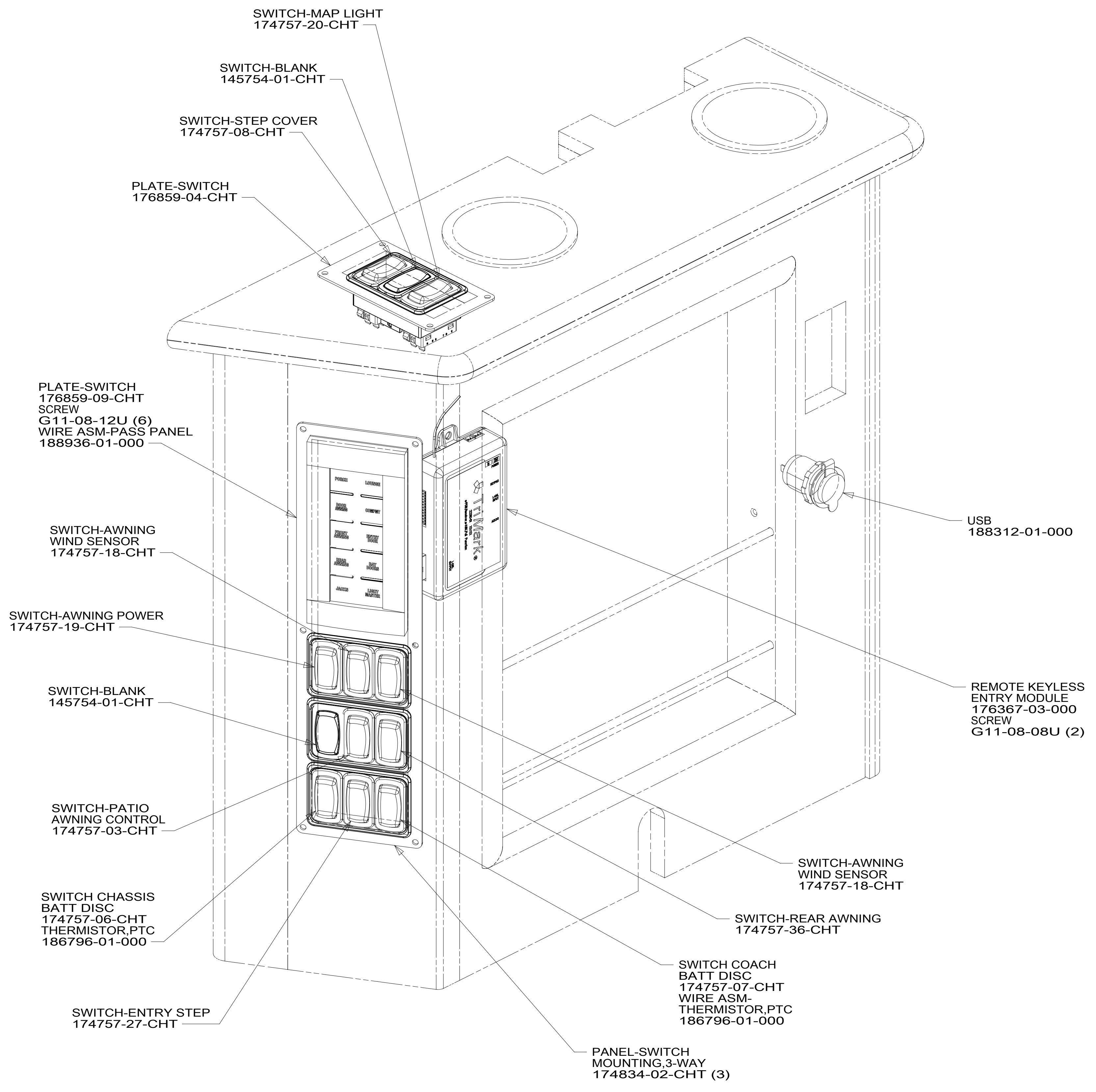
NOTES:

- 25Y HOMETHEATER SOUNDBAR SYS-PRM
- 25N HOME THEATER SOUNDBAR SYSTEM
- 1DF EXT TV ENTERTAINMENT CENTER
- 64J SEAT PED-6-WAY DR/PASS POWER
- 265 CODES/STANDARDS-CSA/CMVSS
- 1B1 CODES/STANDARDS USA

FOR ELECTRICAL TORQUE SPECIFICATIONS SEE DWG NO. 128783-01-000

FOR ELECTRICAL CALLOUTS SEE DWG NO. 121339-01-000

DESCRIPTION:	1B1 265	
WIRING INSTL-BODY, 12V		
SHEET:	ITEM/PART NO:	REV
3 OF 9	000208433 / 30009901000	



- 52N AWNING - PATIO, ELECTRIC
- 52S AWNING - 2ND PATIO, ELECTRIC
- 62R SEATS-W/QUEEN PASS.-HEAT UL
- 62L SEATS-LUXURY CAB
- 63N AWNING-ENTRY, ELECTRIC
- 265 CODES/STANDARDS-CSA/CMVSS
- 1B1 CODES/STANDARDS USA

1. AT MINIMUM ALL WIRES TO BE SUPPORTED AND SECURED PER CODE REQUIREMENTS. USE CLAMP 10495 OR 10497 OR WIRE TIE 8343 OR 108046 AND SCREW G67-XX-XXX OR G56-XX-XXX AS APPROPRIATE FOR INSTALLATION.

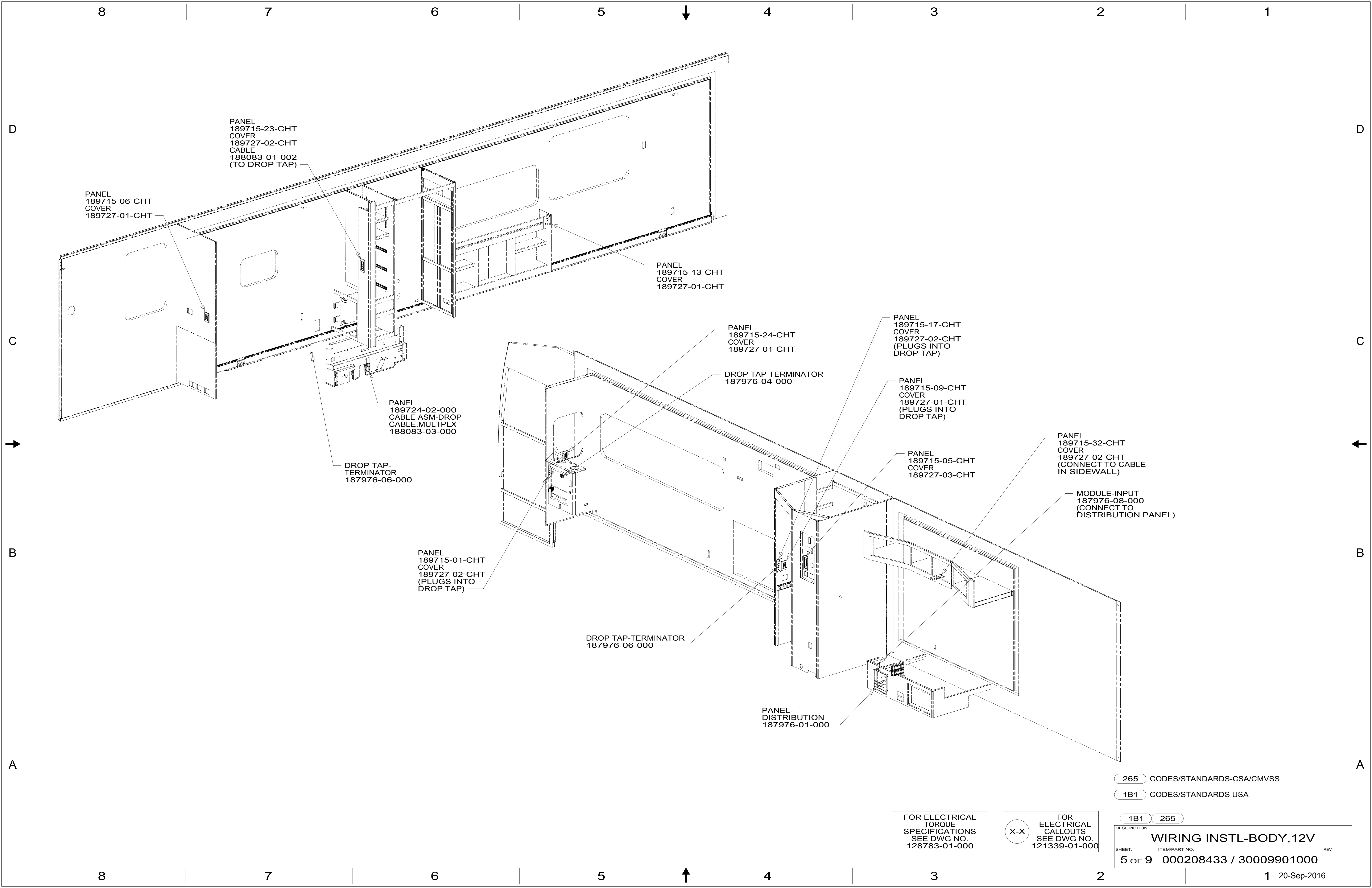
NOTES:

DETAIL DA

FOR ELECTRICAL TORQUE SPECIFICATIONS SEE DWG NO. 128783-01-000

FOR ELECTRICAL CALLOUTS SEE DWG NO. 121339-01-000

DESCRIPTION:	1B1 265	
WIRING INSTL-BODY, 12V		
SHEET:	ITEM/PART NO:	REV
4 OF 9	000208433 / 30009901000	



PANEL
189715-23-CHT
COVER
189727-02-CHT
CABLE
188083-01-002
(TO DROP TAP)

PANEL
189715-06-CHT
COVER
189727-01-CHT

PANEL
189715-13-CHT
COVER
189727-01-CHT

PANEL
189715-24-CHT
COVER
189727-01-CHT

PANEL
189715-17-CHT
COVER
189727-02-CHT
(PLUGS INTO
DROP TAP)

PANEL
189715-09-CHT
COVER
189727-01-CHT
(PLUGS INTO
DROP TAP)

PANEL
189715-32-CHT
COVER
189727-02-CHT
(CONNECT TO CABLE
IN SIDEWALL)

PANEL
189715-05-CHT
COVER
189727-03-CHT

MODULE-INPUT
187976-08-000
(CONNECT TO
DISTRIBUTION PANEL)

PANEL
189724-02-000
CABLE ASM-DROP
CABLE,MULTPLX
188083-03-000

DROP TAP-
TERMINATOR
187976-06-000

DROP TAP-TERMINATOR
187976-04-000

PANEL
189715-01-CHT
COVER
189727-02-CHT
(PLUGS INTO
DROP TAP)

DROP TAP-TERMINATOR
187976-06-000

PANEL-
DISTRIBUTION
187976-01-000

265 CODES/STANDARDS-CSA/CMVSS

1B1 CODES/STANDARDS USA

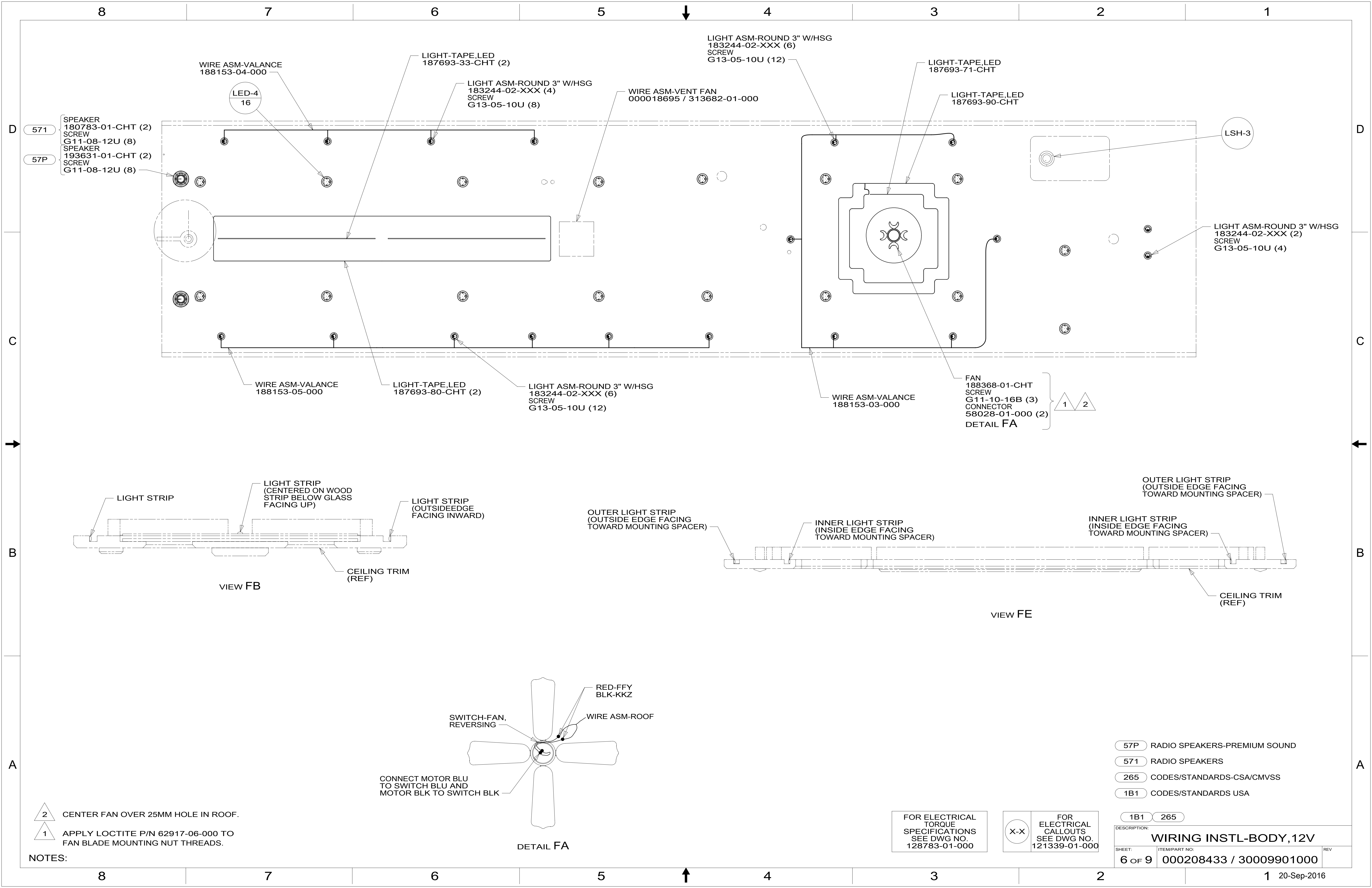
1B1 265

FOR ELECTRICAL
TORQUE
SPECIFICATIONS
SEE DWG NO.
128783-01-000

FOR
ELECTRICAL
CALLOUTS
SEE DWG NO.
121339-01-000

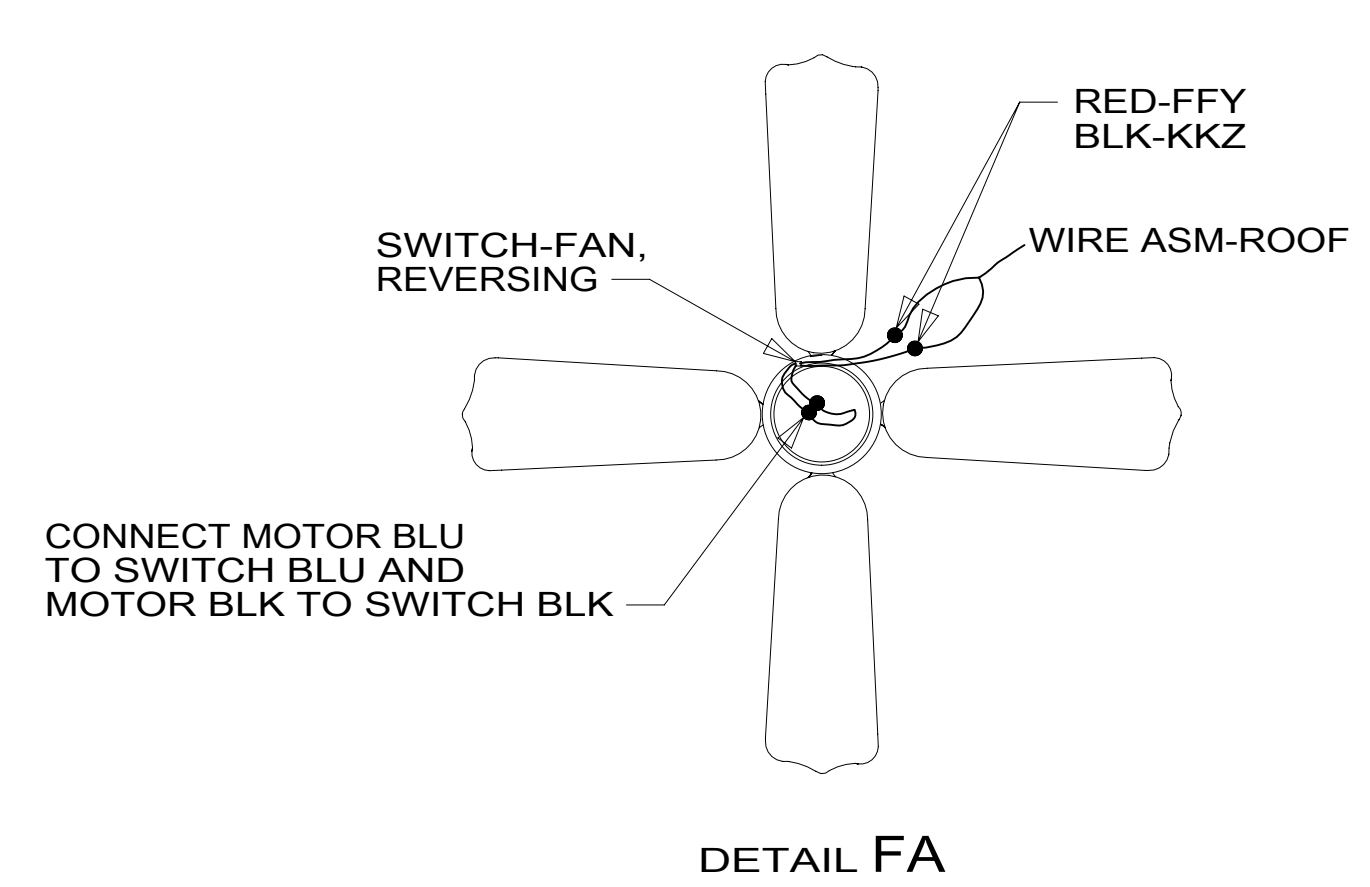
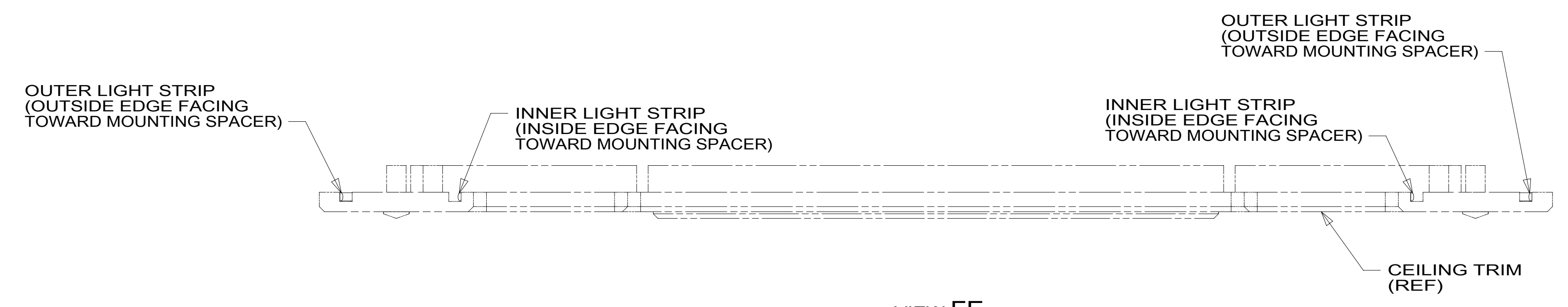
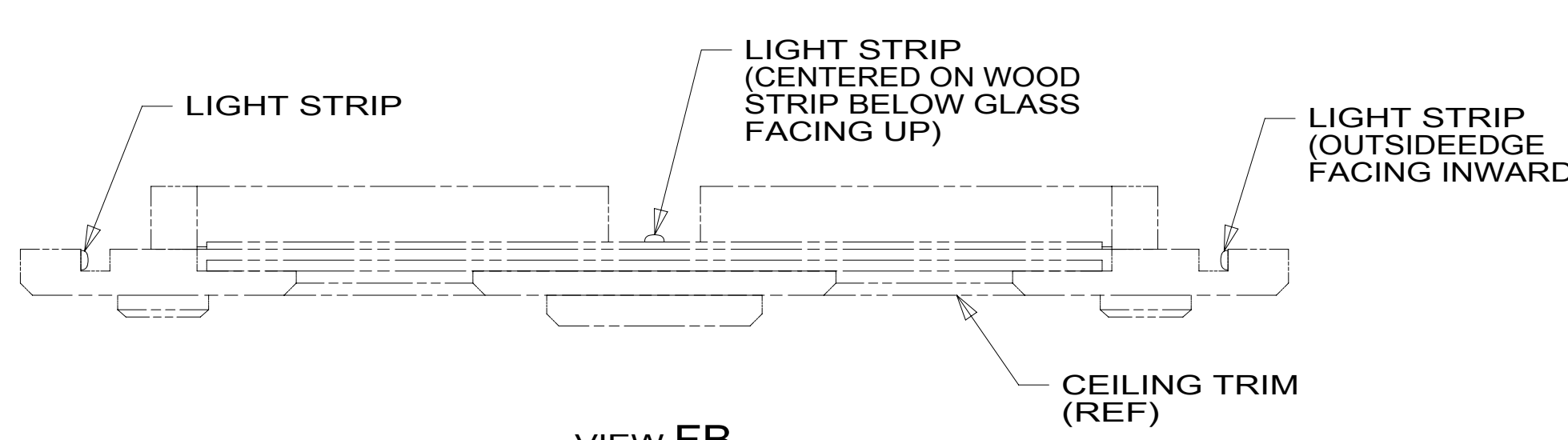
DESCRIPTION:
WIRING INSTL-BODY, 12V

SHEET: 5 OF 9 ITEM/PART NO: 000208433 / 30009901000 REV



- 571 SPEAKER 180783-01-CHT (2)
SCREW G11-08-12U (8)
- 57P SPEAKER 193631-01-CHT (2)
SCREW G11-08-12U (8)

- WIRE ASM-VALANCE 188153-04-000
- LED-4 16
- LIGHT-TAPE,LED 187693-33-CHT (2)
- LIGHT ASM-ROUND 3" W/HSG 183244-02-XXX (4)
SCREW G13-05-10U (8)
- WIRE ASM-VENT FAN 000018695 / 313682-01-000
- LIGHT-TAPE,LED 187693-71-CHT
- LIGHT-TAPE,LED 187693-90-CHT
- LSH-3
- LIGHT ASM-ROUND 3" W/HSG 183244-02-XXX (2)
SCREW G13-05-10U (4)
- WIRE ASM-VALANCE 188153-05-000
- LIGHT-TAPE,LED 187693-80-CHT (2)
- LIGHT ASM-ROUND 3" W/HSG 183244-02-XXX (6)
SCREW G13-05-10U (12)
- WIRE ASM-VALANCE 188153-03-000
- FAN 188368-01-CHT
SCREW G11-10-16B (3)
CONNECTOR 58028-01-000 (2)
DETAIL FA



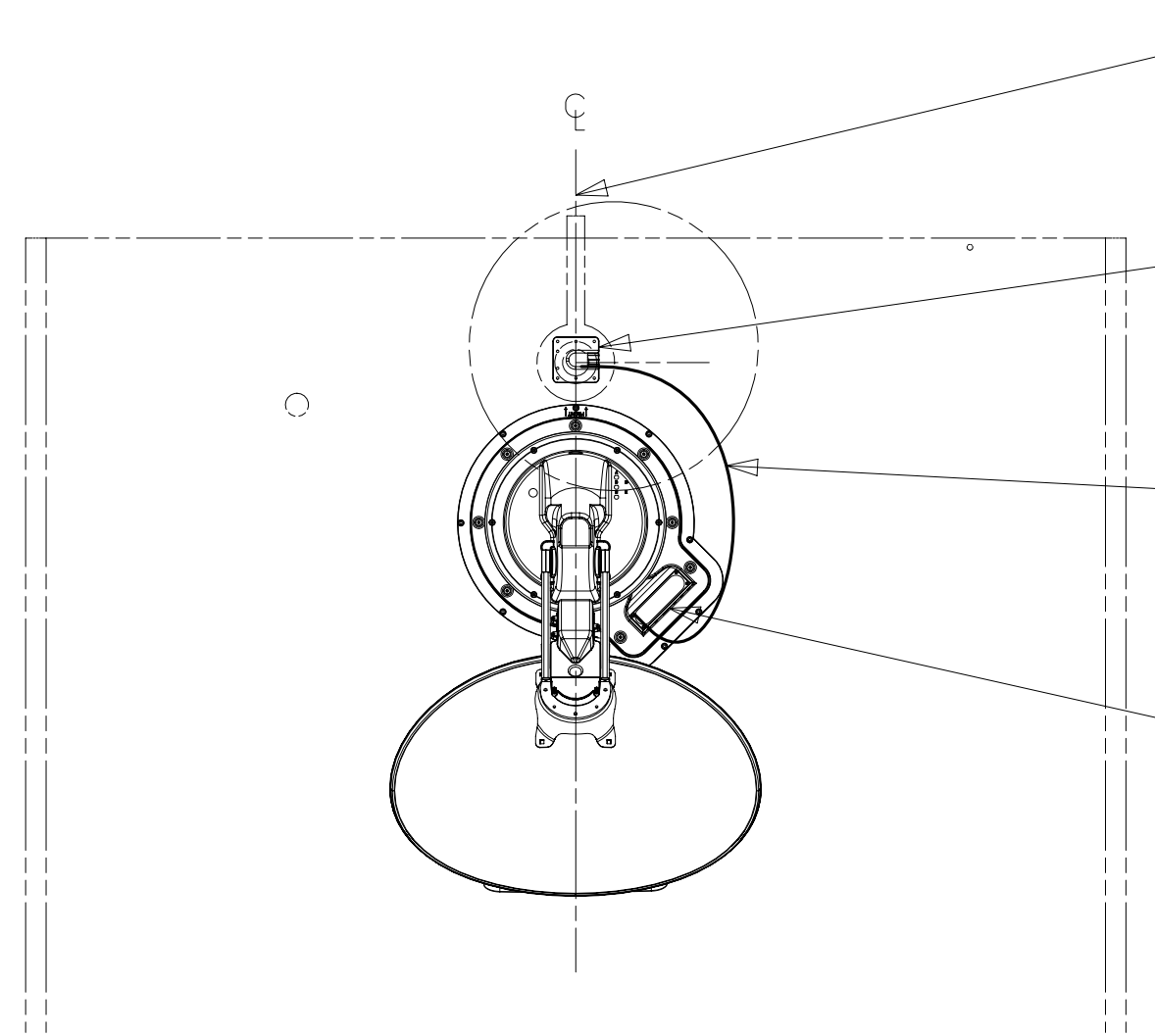
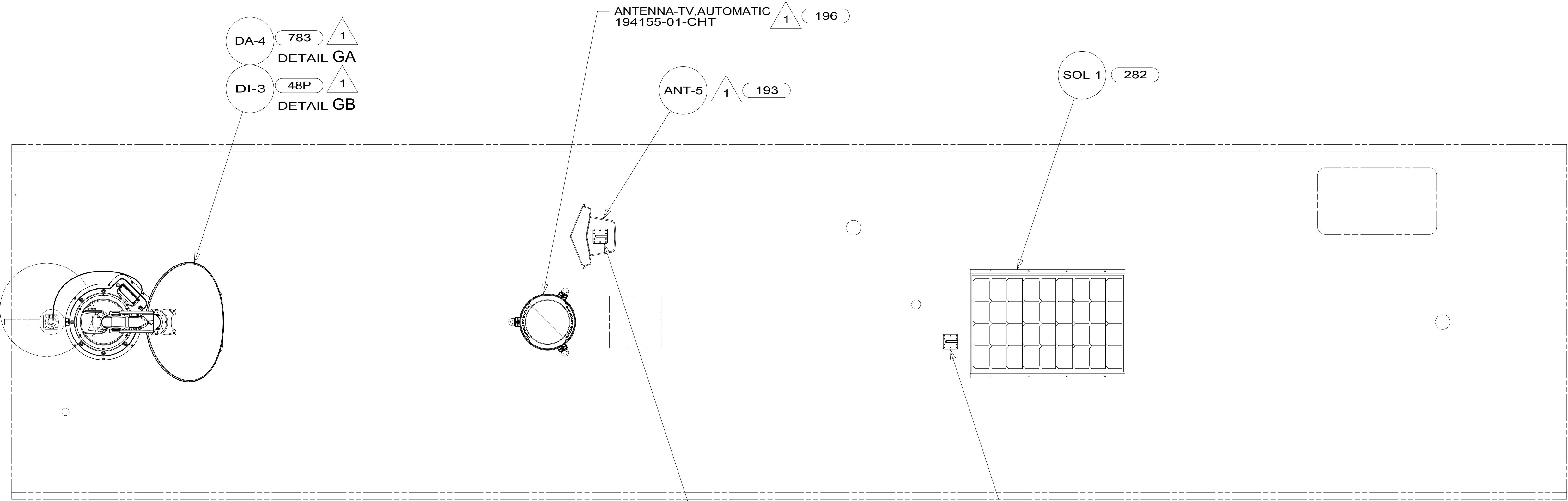
- NOTES:
- 2 CENTER FAN OVER 25MM HOLE IN ROOF.
 - 1 APPLY LOCTITE P/N 62917-06-000 TO FAN BLADE MOUNTING NUT THREADS.

FOR ELECTRICAL TORQUE SPECIFICATIONS SEE DWG NO. 128783-01-000

FOR ELECTRICAL CALLOUTS SEE DWG NO. 121339-01-000

- 57P RADIO SPEAKERS-PREMIUM SOUND
- 571 RADIO SPEAKERS
- 265 CODES/STANDARDS-CSA/CMVSS
- 1B1 CODES/STANDARDS USA

DESCRIPTION:		WIRING INSTL-BODY, 12V	
SHEET:	ITEM/PART NO.:	REV:	
6 OF 9	000208433 / 30009901000		



THE SATELLITE DISH AND WIRE CONNECTIONS ARE TO BE PLACED ON THE CENTERLINE OF THE MOTORHOME FACING FORWARD.

SEPARATE CABLES AND INSTALL WIRE COVER OVER HOLE IN ROOF ASM WITH CABLES EXITING ON PASSENGERS SIDE.

WHEN APPLYING ROOF SEALANT TO SATELLITE DISH, PLACE ROOF SEALANT HERE (APPROX. 75MM WIDE) AND PUSH THE CABLES INTO THE SEALANT TO STABILIZE THEM.

CONNECT CABLE ASM-COAX FROM ROOF ASM TO COAX CABLES ON SATELLITE DISH AND CONNECT 10" CABLE-DATA FROM ROOF ASM TO DATA CABLE FROM SATELLITE DISH AND PLACE ALL CONNECTIONS BACK INTO ROOF ASM.

DETAIL GA

- 196 TV ANT-AUTO,DIRECTIONAL AMPL
- 193 TV ANT-DIGITAL AMPLIFIED
- 783 SATELLITE HD TV SYSTEM AUTOC
- 282 SOLAR PANEL - 100 WATT
- 48P SAT TV SYSTEM IN-MOTION
- 265 CODES/STANDARDS-CSA/CMVSS
- 1B1 CODES/STANDARDS USA

1 SEE MANUFACTURER'S INSTALLATION FOR ADDITIONAL INFORMATION.

FOR ELECTRICAL TORQUE SPECIFICATIONS SEE DWG NO. 128783-01-000

FOR ELECTRICAL CALLOUTS SEE DWG NO. 121339-01-000

DESCRIPTION:	
1B1 265	
WIRING INSTL-BODY, 12V	
SHEET:	ITEM/PART NO. REV
7 OF 9	000208433 / 30009901000

8 7 6 5 4 3 2 1

D

D

C

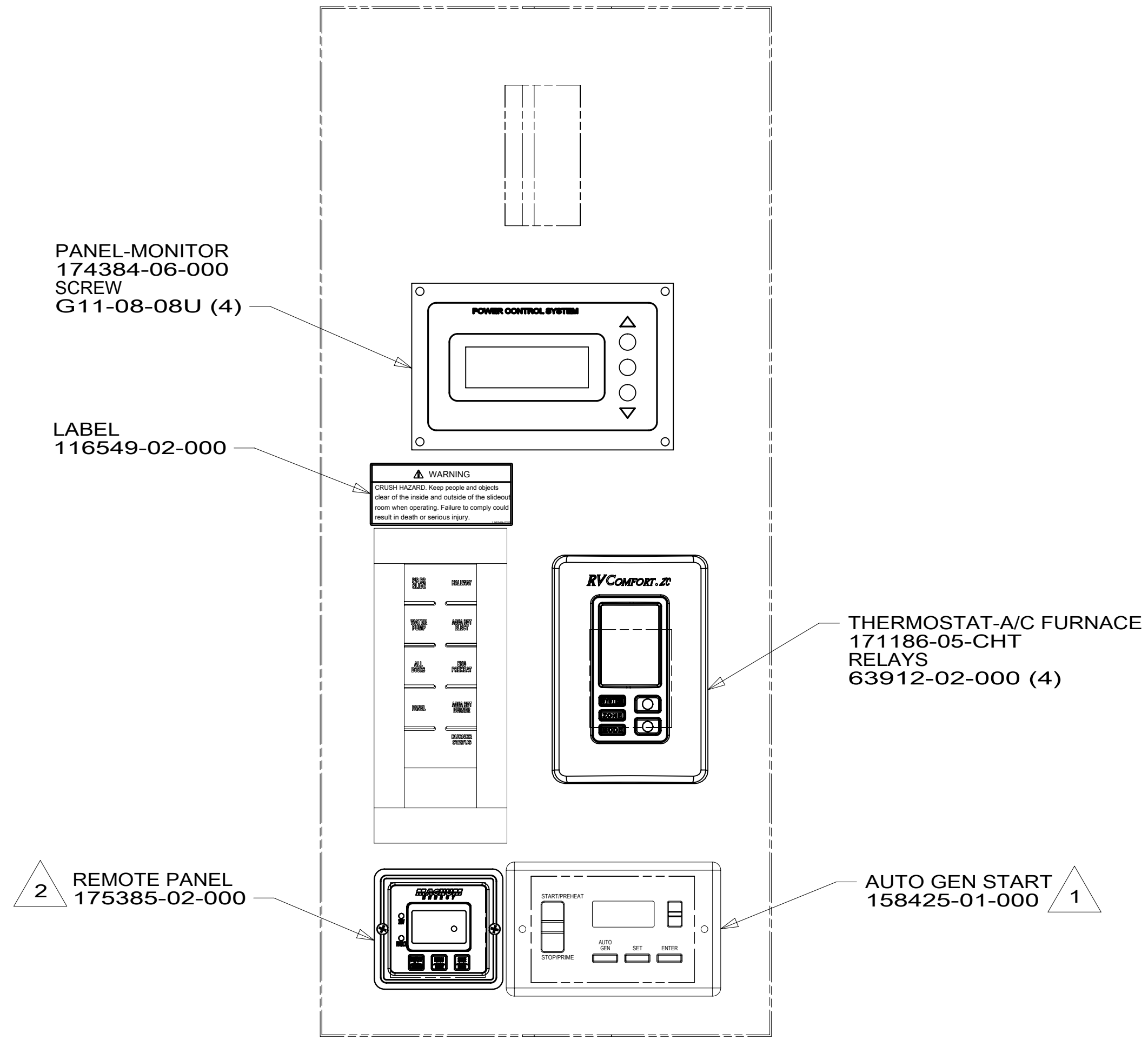
C

B

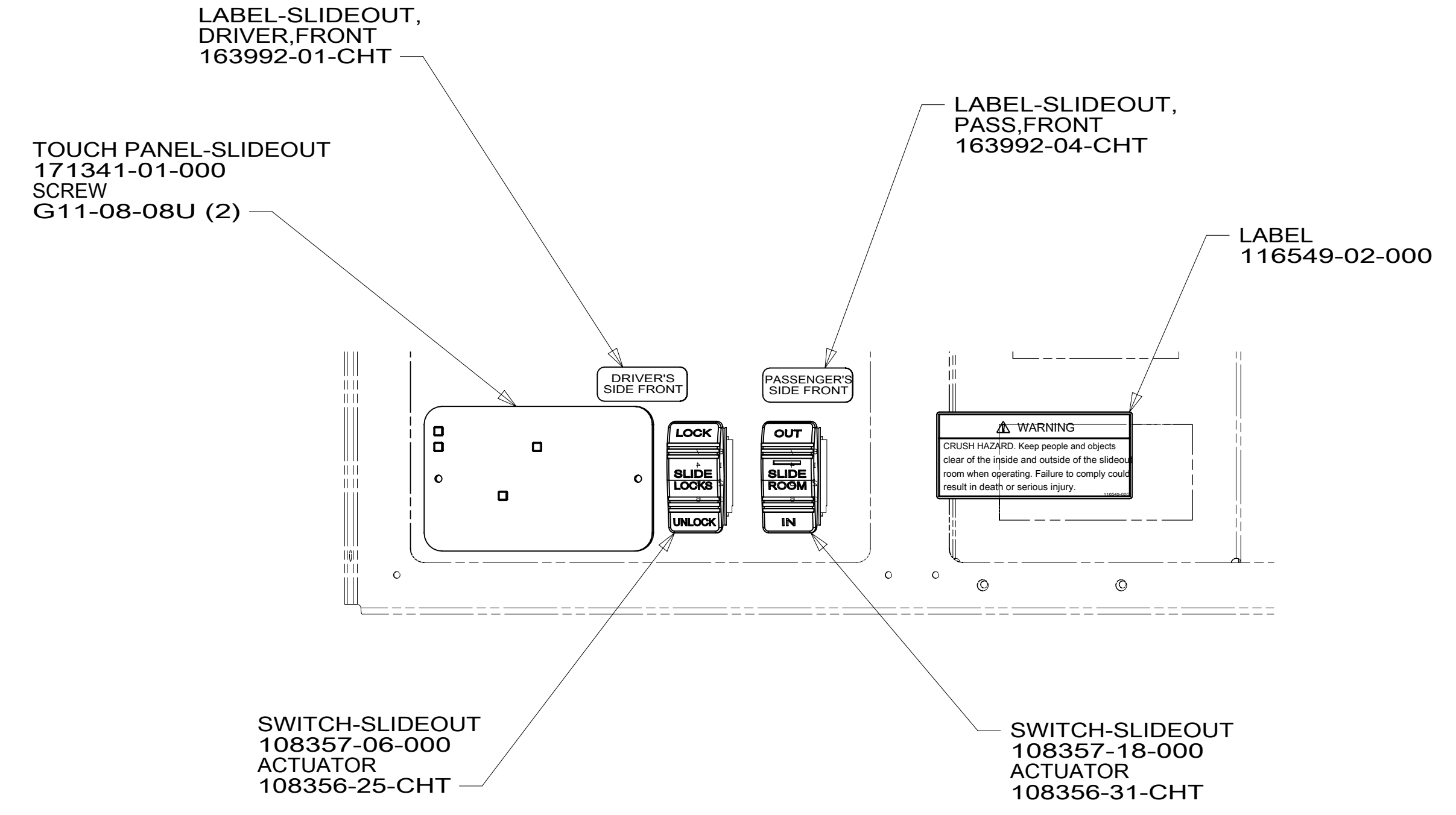
B

A

A



DETAIL HA



DETAIL HB

- NOTES:
- 2 SET 'BAT TYPE' TO 'AGM2'
SET 'LBCO' TO '11VDC'
SET 'BAT AHRS' TO '600 AH'
SEE OWNER'S MANUAL FOR SETUP PROCEDURE.
 - 1 SET 'GEN TYPE' TO 'QD 10-12'
SET 'SAFETY TYPE' TO 'IGNITION'
SET 'SP SENSE' TO 'AFTER'
SEE OWNER'S MANUAL FOR SETUP PROCEDURE.

- 32W GENERATOR-START,AUTO SYSTEM
- 265 CODES/STANDARDS-CSA/CMVSS
- 1B1 CODES/STANDARDS USA

FOR ELECTRICAL TORQUE SPECIFICATIONS SEE DWG NO. 128783-01-000

FOR ELECTRICAL CALLOUTS SEE DWG NO. 121339-01-000

DESCRIPTION: WIRING INSTL-BODY, 12V	
SHEET: 8 OF 9	ITEM/PART NO.: 000208433 / 30009901000
REV	

8 7 6 5 4 3 2 1

D

D

C

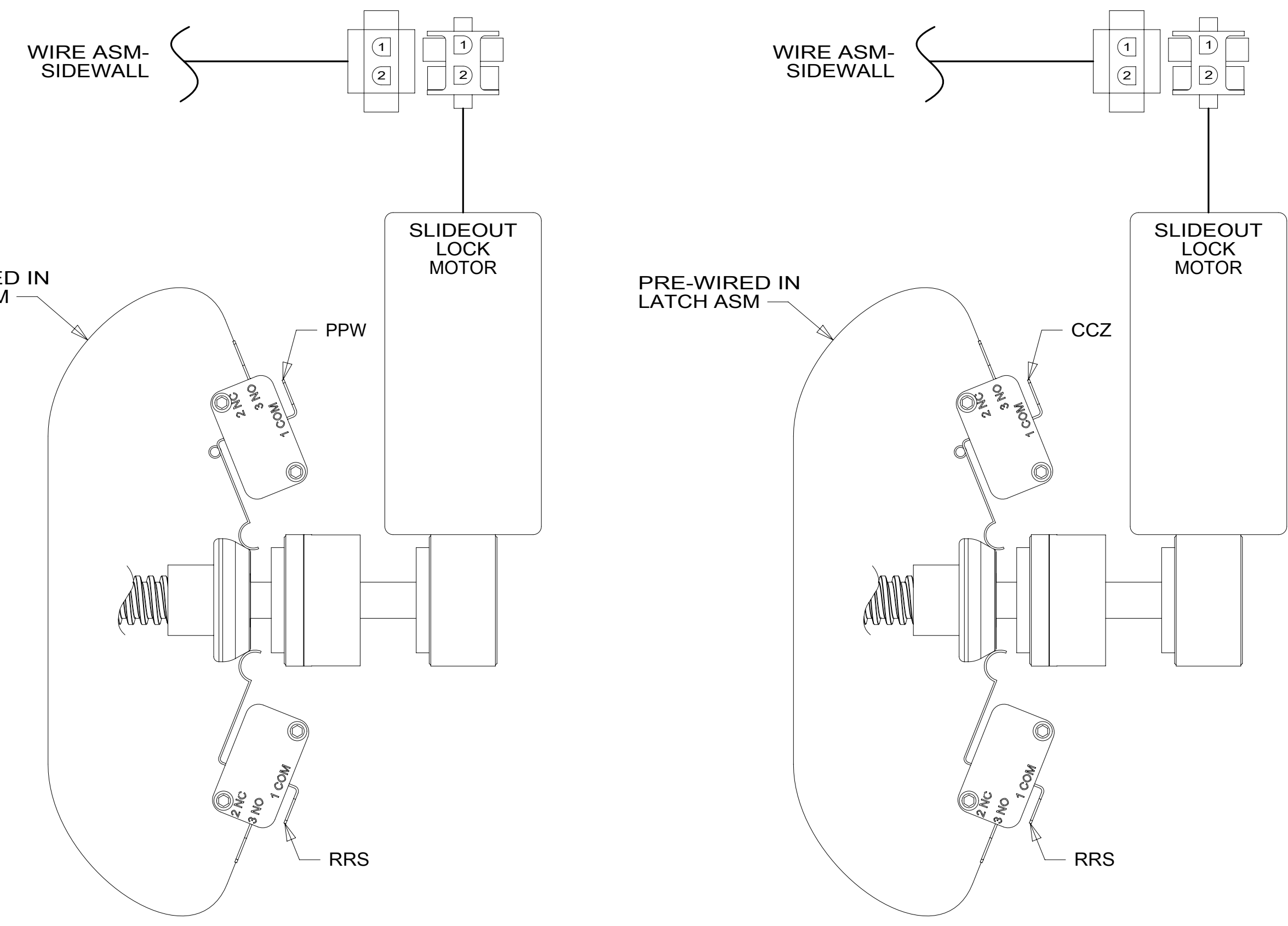
C

B

B

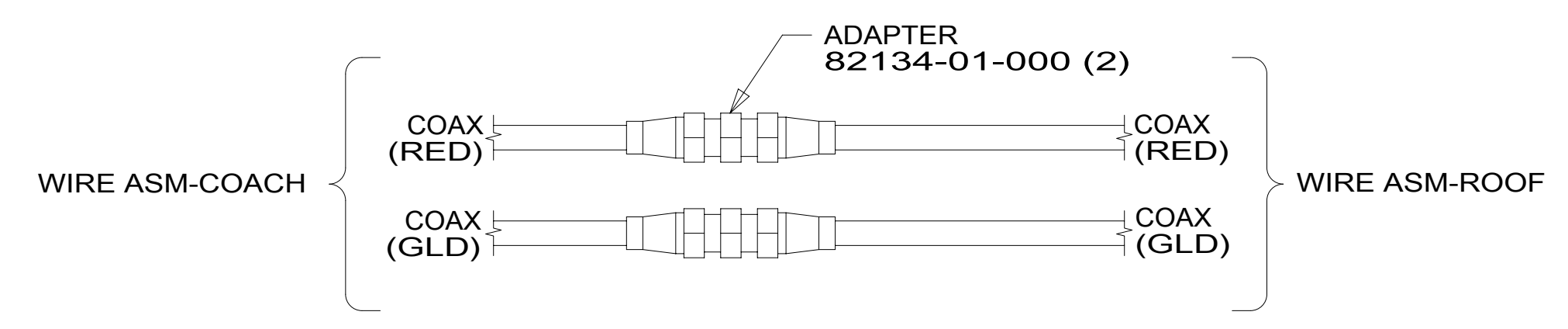
A

A



DETAIL JA

DETAIL JB



DETAIL JC

FOR ELECTRICAL TORQUE SPECIFICATIONS SEE DWG NO. 128783-01-000

FOR ELECTRICAL CALLOUTS SEE DWG NO. 121339-01-000

- 265 CODES/STANDARDS-CSA/CMVSS
- 1B1 CODES/STANDARDS USA

DESCRIPTION: WIRING INSTL-BODY, 12V		
SHEET: 9 OF 9	ITEM/PART NO.: 000208433 / 30009901000	REV