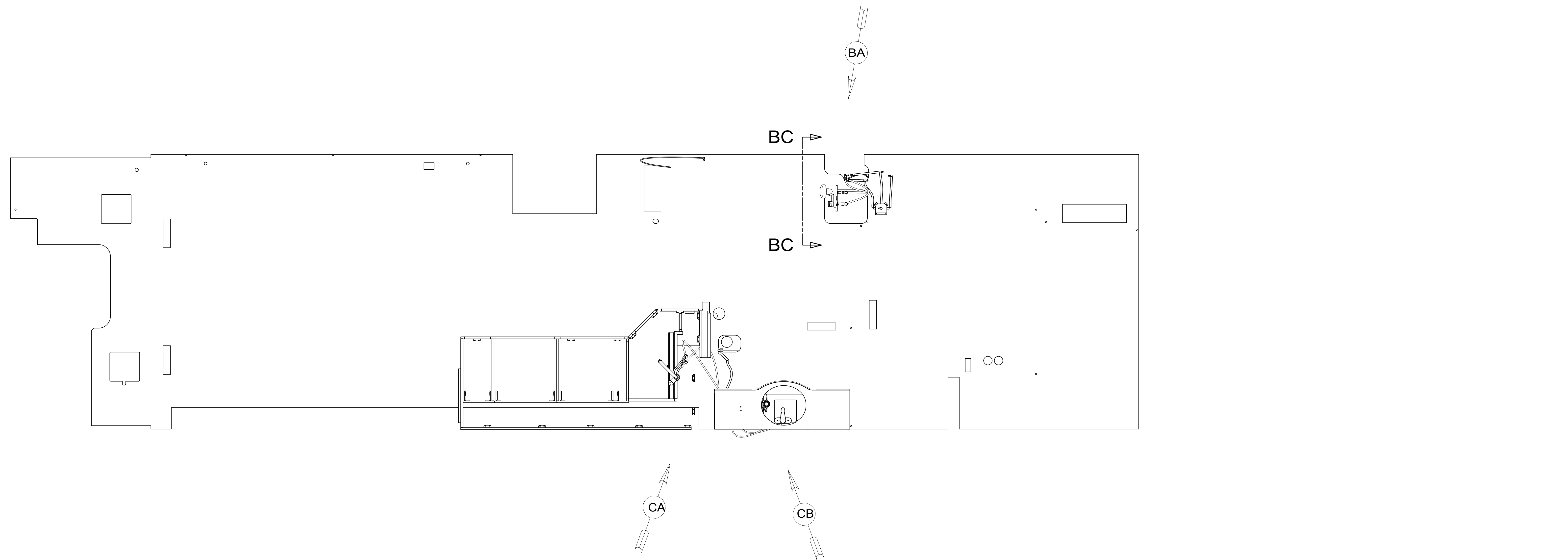


REV	ZONE	REVISION RECORD	DATE	DFTR-ORIG
A	---	INITIAL RELEASE	11/03/15	3660



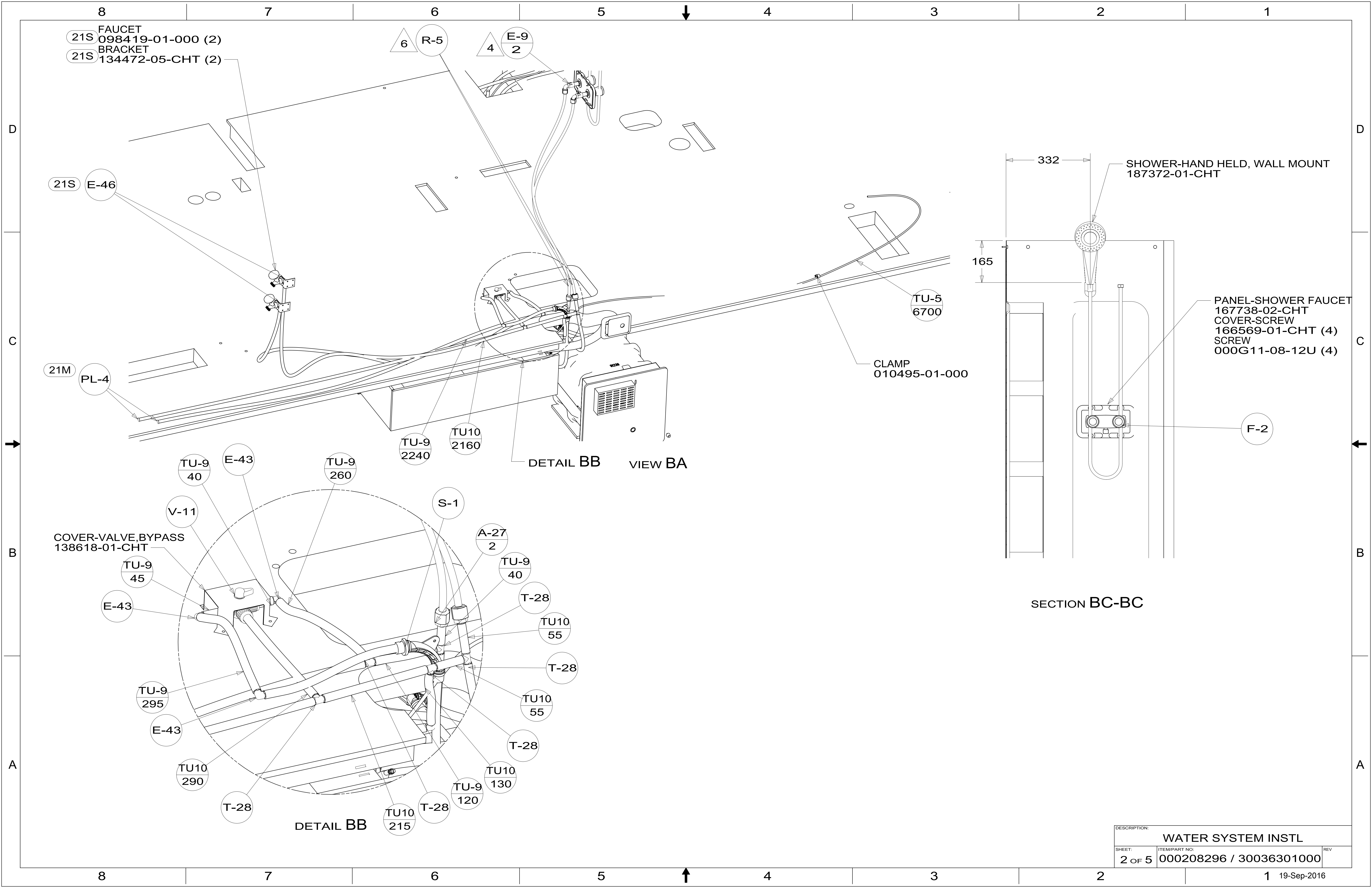
- 10 ALL CRIMP FITTING TO 3/4" PEX TUBING REQUIRE 3/4" CLAMP 140171-05-000.
9. SEAL VENT HOLE IN DOOR W/SILICONE SEALANT.
8. ALL CRIMP FITTINGS TO 1/2" PEX TUBING REQUIRE 1/2" CLAMP 140171-03-000.
7. ALL CRIMP FITTINGS TO 5/8" FLEX TUBING REQUIRE 5/8" CLAMP 140171-04-000.
- 6 LABEL HOT AND COLD SUPPLY TUBES AND TAPE FITTING TO TUBE BEFORE CABINET SET TO PREVENT MOVEMENT.
- 5 ADD PIPE WRAP (LADDER SCRAP 110157-02-000) INSULATION.
- 4 ADD TEFLON TAPE 010405-02-000.
3. ALL TUBING TO BE SECURED AT 1200 INTERVALS MAXIMUM WITH CLAMP 010495-01-000 AND SCREW 000G67-10-12U OR EQUIVALENT.
2. TUBING TO BE INSTALLED WITH SUFFICIENT SLOPE TO PROVIDE DRAINAGE TO NEAREST VALVE.
1. PLASTIC FITTINGS TO BE SEALED WITH SEALANT 084456-01-000.

- 21S WASHER & DRYER-PAIR
- 21M WASHER/DRYER PREP

WINNEBAGO
COPYRIGHT 2016 WINNEBAGO INDUSTRIES, INC.

DSNR:		ALL DIMENSIONS ARE IN MILLIMETERS	
DFTR:		⊕	
UNSPECIFIED TOLERANCES:		MATERIAL:	
WHOLE DIM (X)	3		
ONE-PLACE (X.X)	1.5		
TWO-PLACE (X.XX)	0.50		
ANGLE	1°	WEIGHT: (LBS)	FIRST USED: (REF)
REFER TO ES0018 FOR FASTENER TIGHTENING GUIDELINES			
DESCRIPTION: WATER SYSTEM INSTL			
SHEET:	ITEM/PART NO:	REV	
1 OF 5	000208296 / 30036301000		

X-X
FOR WATER CALLOUTS SEE DWG NO. 116230-01-000



FAUCET
21S 098419-01-000 (2)
BRACKET
21S 134472-05-CHT (2)

21S E-46

21M PL-4

COVER-VALVE, BYPASS
138618-01-CHT

TU-9 45

E-43

TU-9 295

E-43

TU10 290

T-28

DETAIL BB

TU10 215

T-28

TU-9 120

TU10 130

T-28

TU10 55

T-28

TU10 55

TU-9 40

A-27 2

S-1

TU-9 260

E-43

TU-9 40

TU-9 2240

TU10 2160

DETAIL BB

VIEW BA

CLAMP
010495-01-000

TU-5
6700

332
SHOWER-HAND HELD, WALL MOUNT
187372-01-CHT

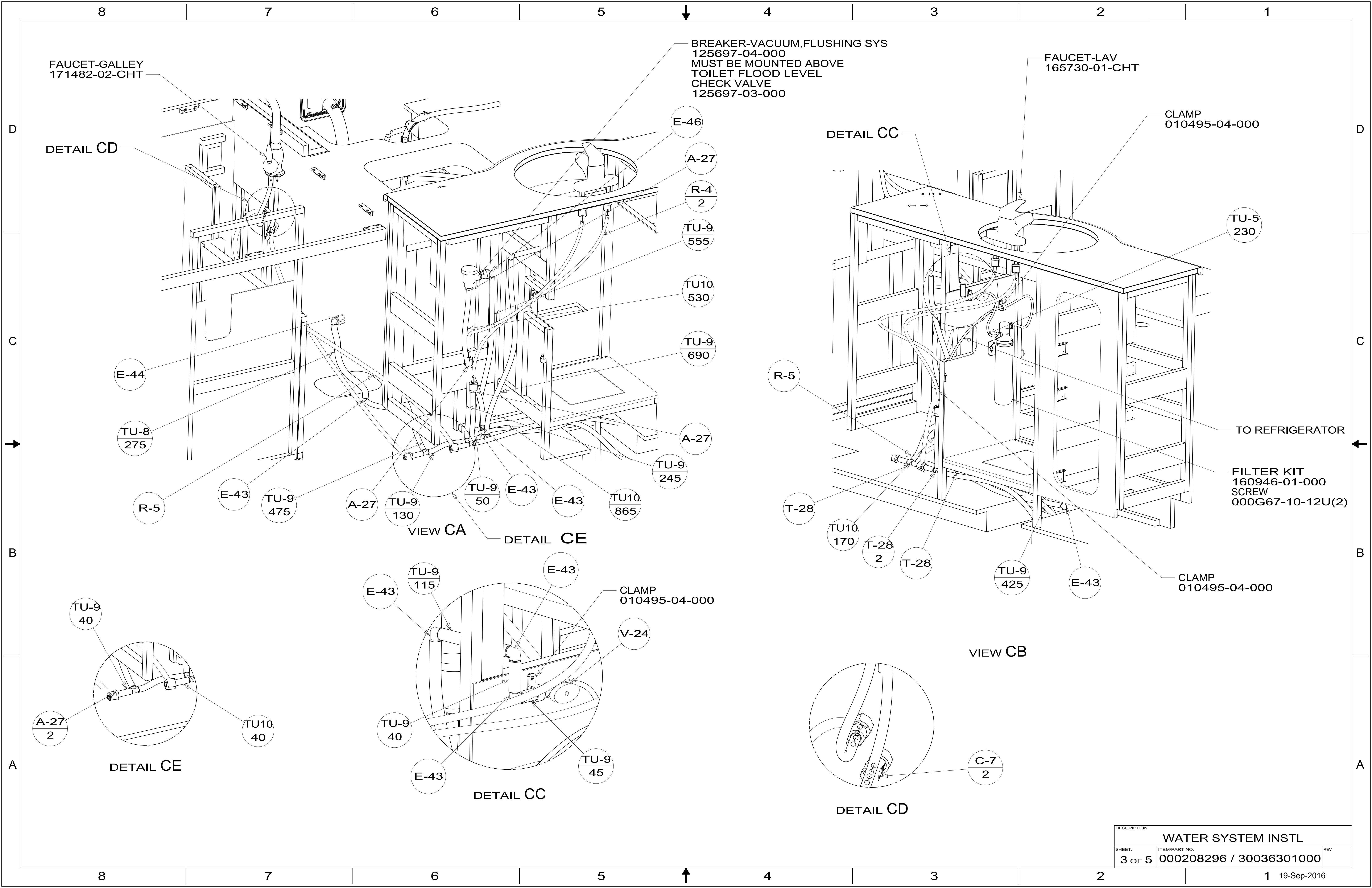
165

PANEL-SHOWER FAUCET
167738-02-CHT
COVER-SCREW
166569-01-CHT (4)
SCREW
000G11-08-12U (4)

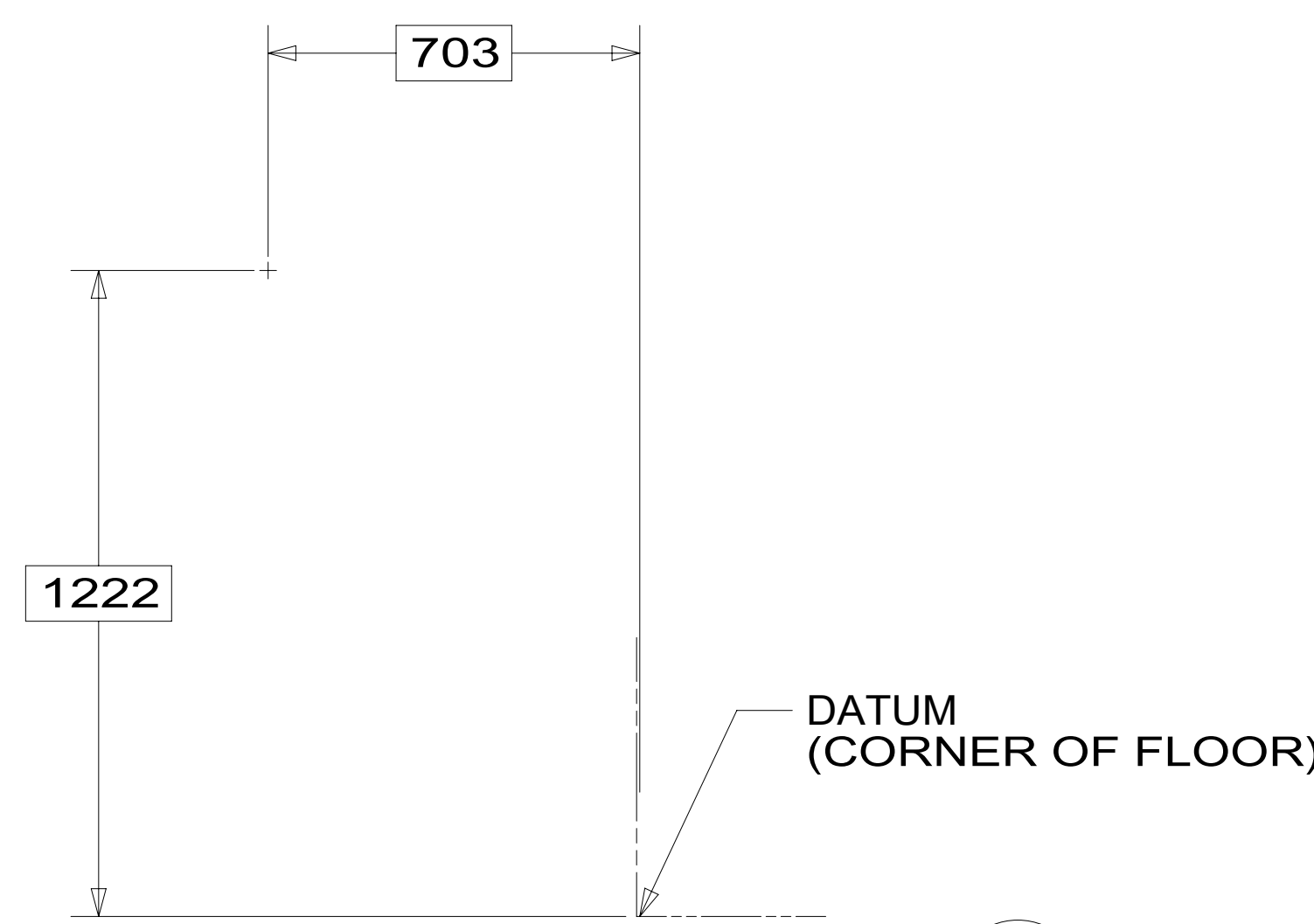
F-2

SECTION BC-BC

DESCRIPTION:		
WATER SYSTEM INSTL		
SHEET:	ITEM/PART NO.:	REV
2 OF 5	000208296 / 30036301000	

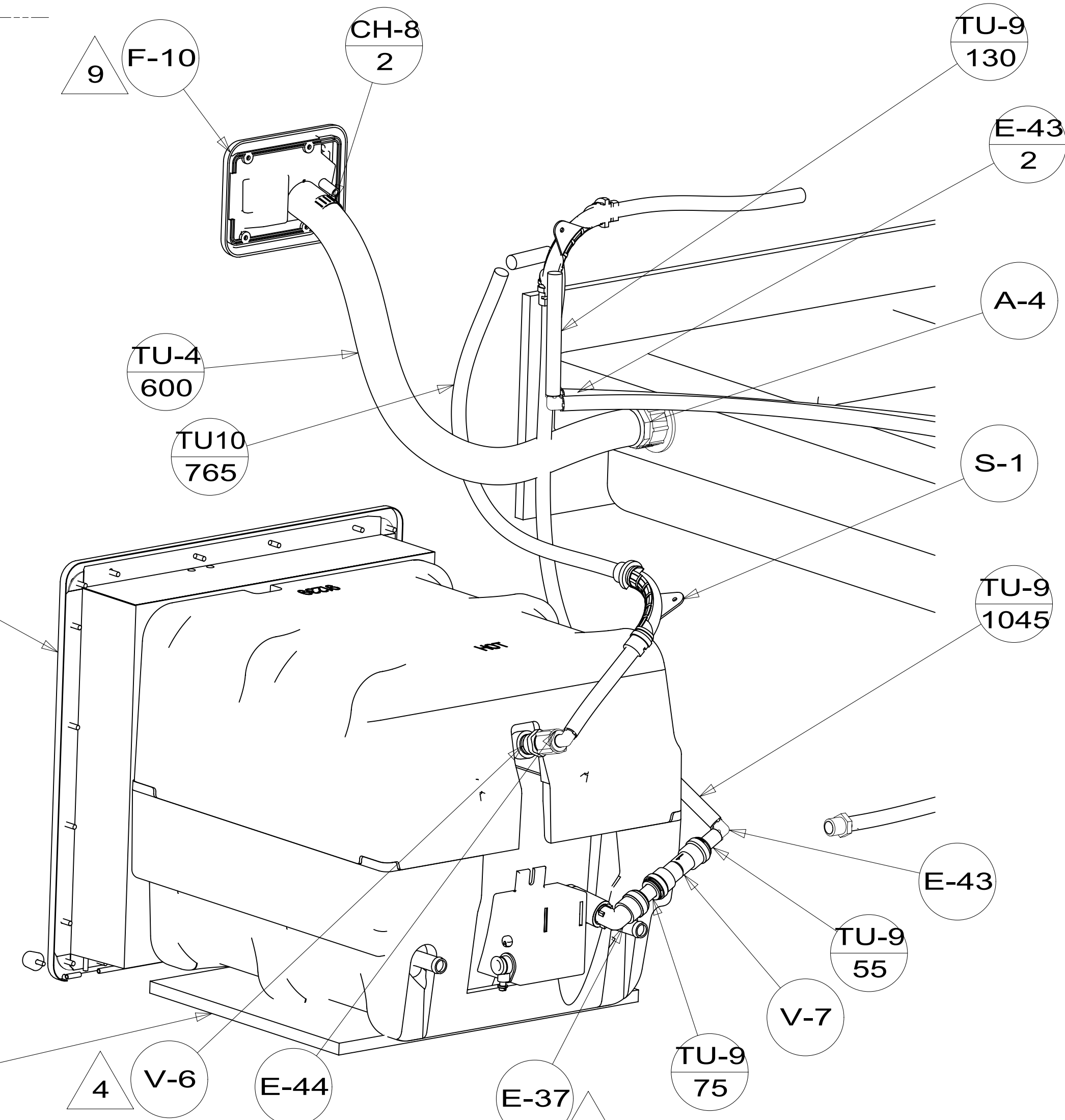


DESCRIPTION:		
WATER SYSTEM INSTL		
SHEET:	ITEM/PART NO:	REV
3 OF 5	000208296 / 30036301000	

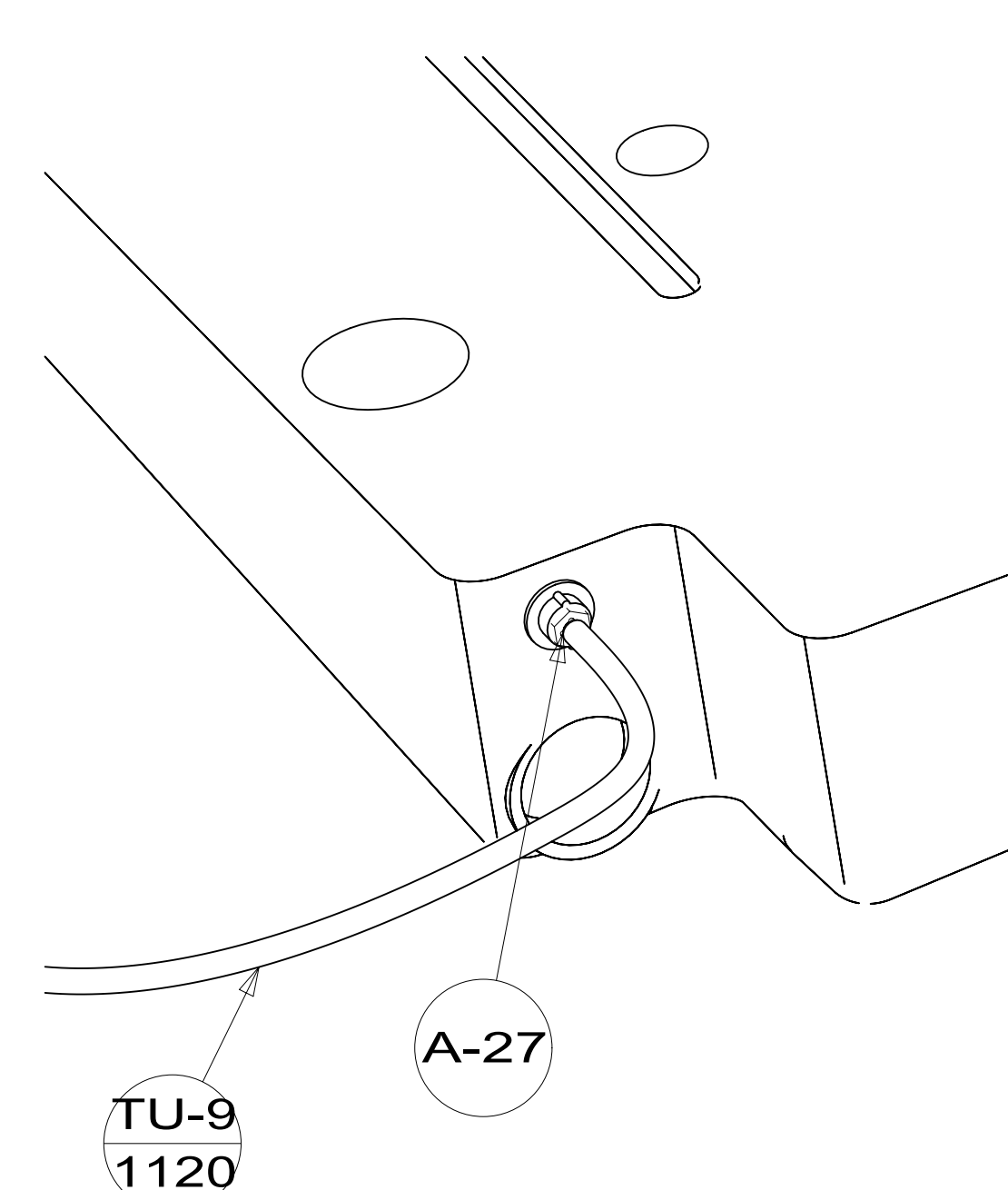
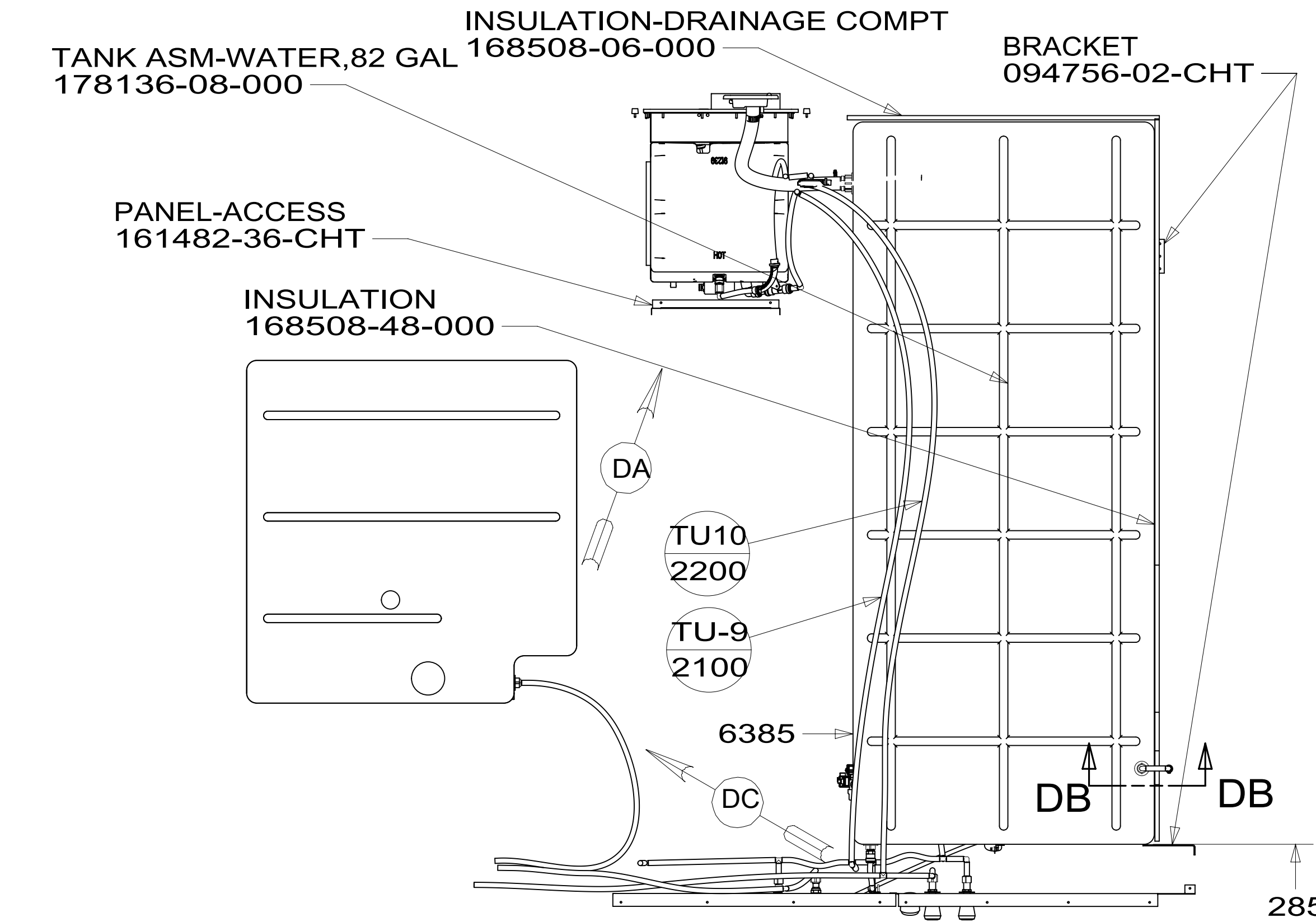


WATER HEATER INSTL
186899-02-000
CABLE
076767-03-000
SCREW
000G11-06-08U (2)

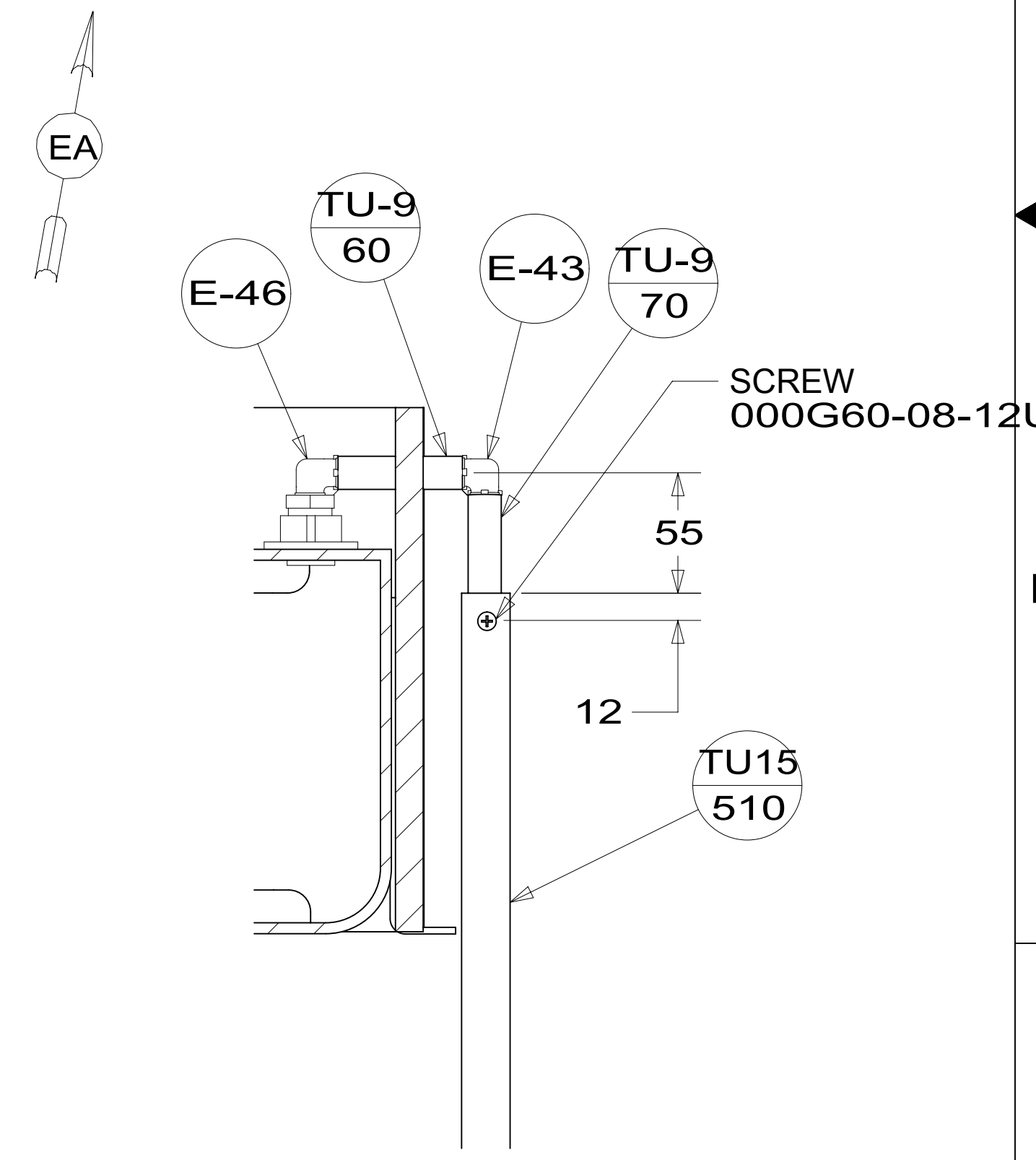
PLYWOOD-CUTSIZE
173882-4M-0CA



VIEW DA
(W/OUT DRAINAGE TANK)

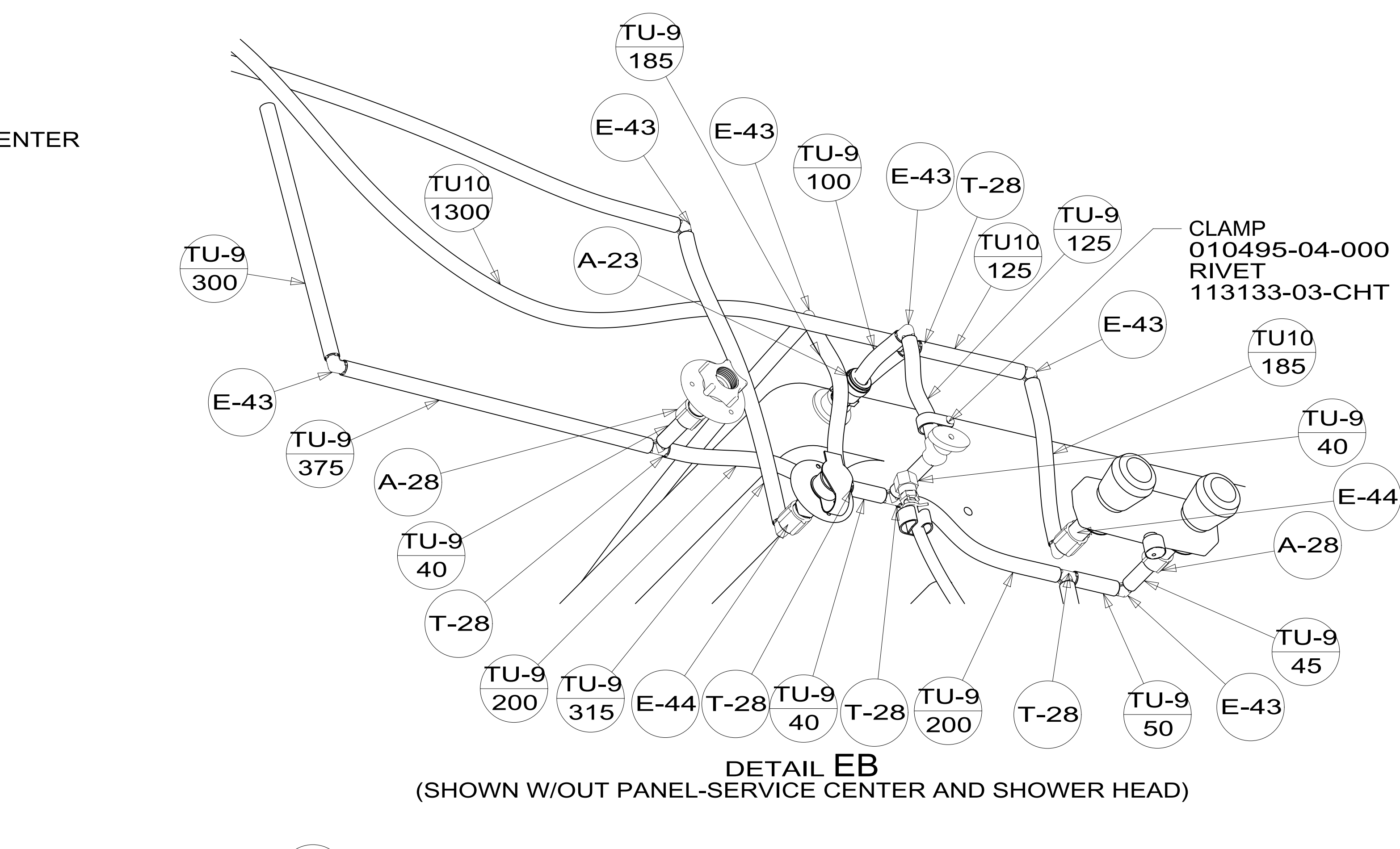
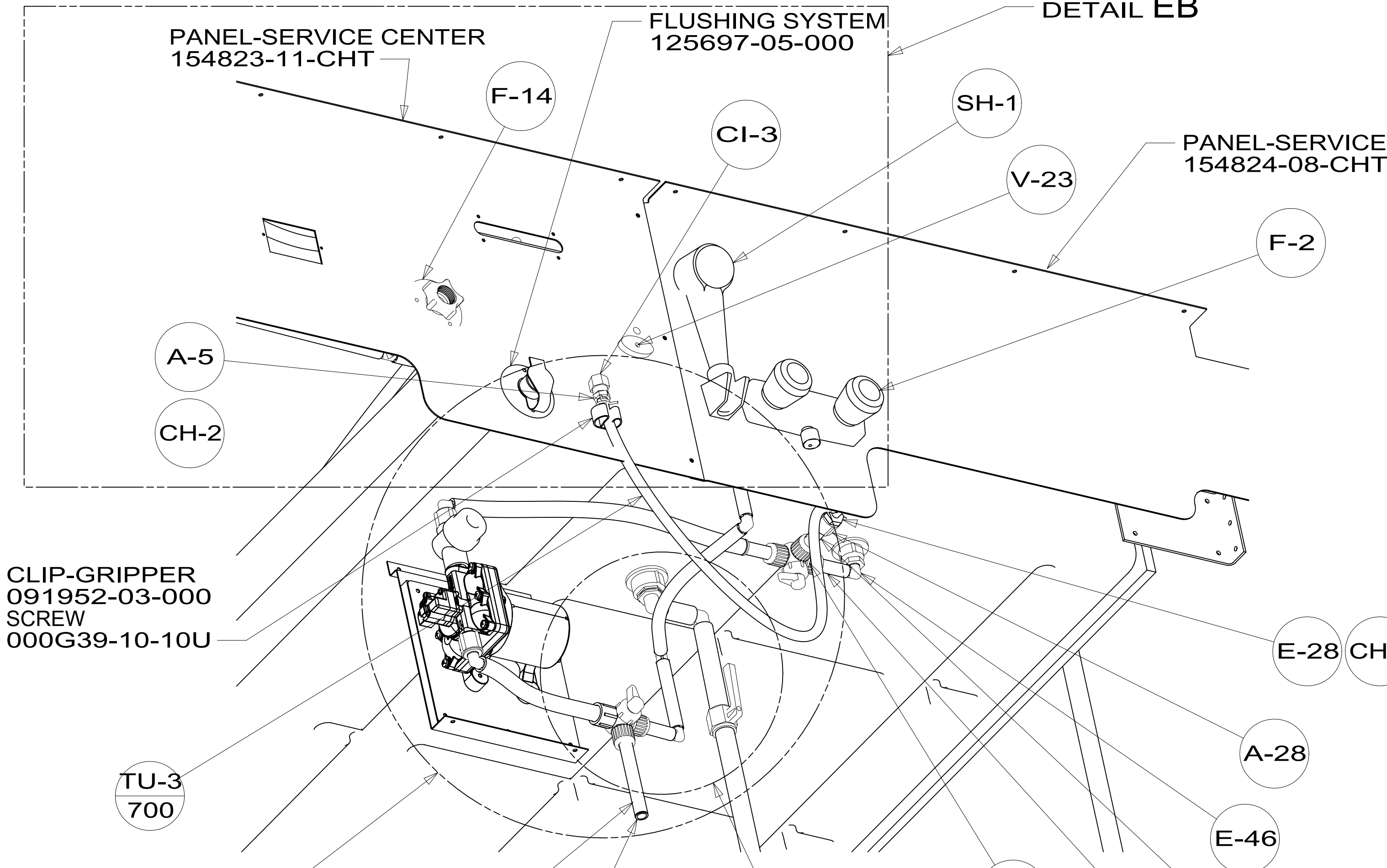
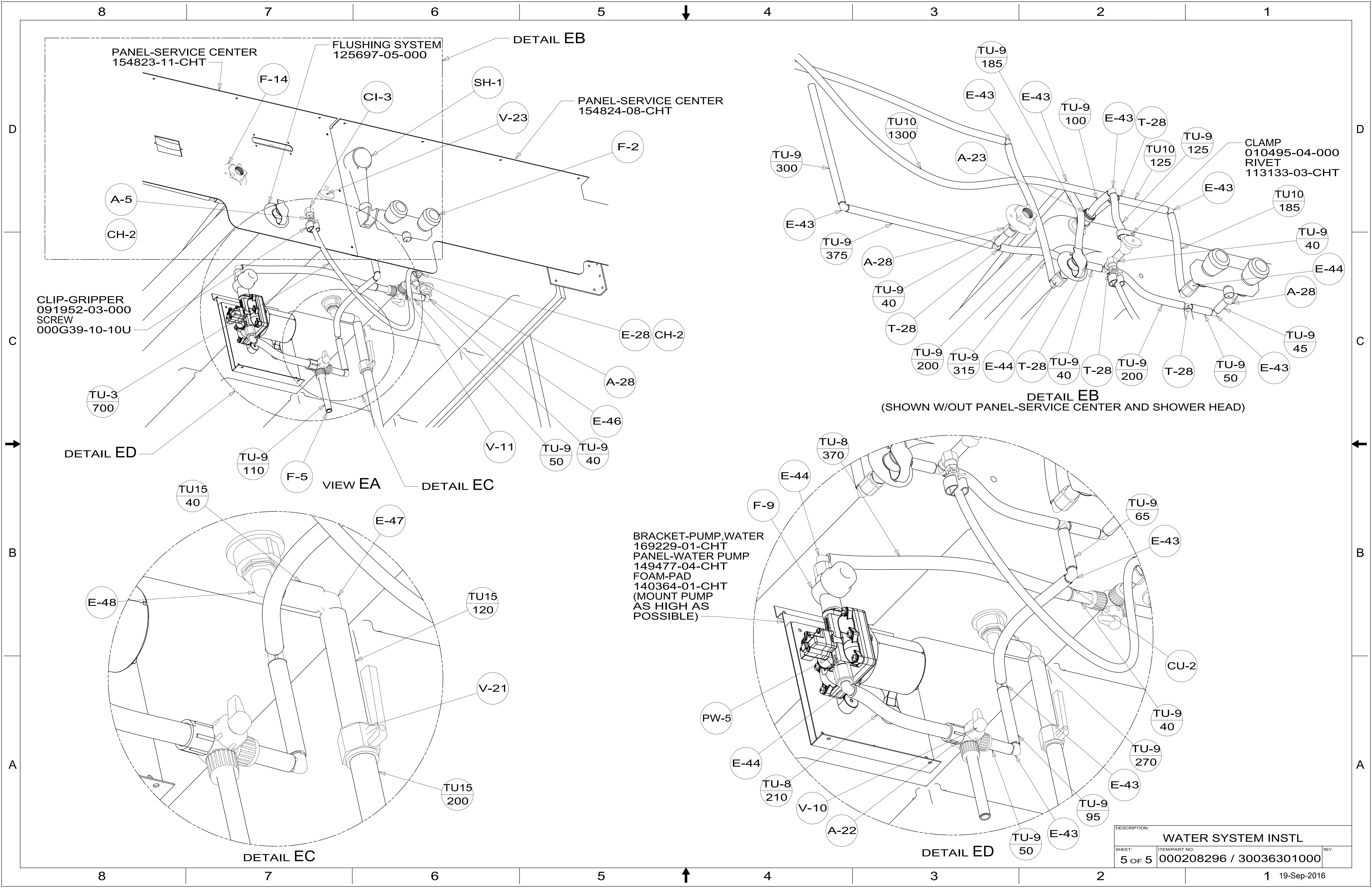


VIEW DC



SECTION DB-DB

DESCRIPTION:		
WATER SYSTEM INSTL		
SHEET:	ITEM/PART NO.:	REV
4 OF 5	000208296 / 30036301000	



DESCRIPTION:		
WATER SYSTEM INSTL		
SHEET:	ITEM/PART NO:	REV
5 OF 5	000208296 / 30036301000	