

WIRE ASM-CHASSIS
00008001 / 310699-01-000

TO FRONT RIGHT
SLIDEOUT FRONT MOTOR

4 PIN HOUSING
TO ELECTRIC STEP
MP,KD
TO STEP DOOR
JAMB SWITCH

BATTERY INSTL
191493-03-000

SEAL-TRIM
113452-02-000 (153 MM) 8

110V
(BRN-2,BLU,BLK)
MAIN DROP TO
WIRE ASM-COACH
& WIRE ASM-ROOF

WIRE ASM-INVERTER
(REF) 401 4

TO FORD SUPPLIED
TAILLAMP CIRCUIT

7 PIN HSG
TO TRAILER
CONNECTOR

TO GROUND BOLT

6 PIN HSG
TO BACKWALL

CABLE ASM-
GENERATOR GND (BLK)
TO GROUND STUD

8 PIN HOUSING
TO GENERATOR

GROUNDS
DETAIL BB

CABLE ASM-
GENERATOR (GRN) 4

GROMMET
023942-01-000

TO FRONT LEFT
SLIDEOUT REAR MOTOR

WIRING TO SLIDEROOM
(BLK,BRN-2)

(RED,YEL,PUR)
TO CHASSIS
ELECTRICAL BOX
(BLU)

TO CHASSIS
ELECTRICAL BOX

CABLE ASM (PUR)
CHASSIS BATTERY
DISCONNECT RETURN
(REF)

GROUND STUD
NUT
D39-05-00U

CHASSIS SUPPLIED YEL
& BLK/ORG CABLES 10 7

ENGINE GROUND CABLES 10 9

STUD-ISOLATED
86233-01-000 (2)
NUT
D39-06-00U (2)
SCREW
G39-08-12U (4)

CHASSIS SUPPLIED
RED CABLE 10 7

FOR ELECTRICAL
TORQUE
SPECIFICATIONS
SEE DWG NO.
128783-01-000

FOR
ELECTRICAL
CALLOUTS
SEE DWG NO.
121339-01-000

WIRING TO SLIDEROOM
& MODULE-110V (BLU)

GROMMET
023942-01-000

GROMMET
023942-02-000

CHASSIS ELECTRICAL
BOX ASM
191494-03-000

TO WIRE ASM-
ELECTRICAL BOX

MP,JT
TO LP TANK

GROMMET
023942-01-000

LEVELING SYSTEM
POWER CABLE

TOP OF RAIL

DATUM

TO CHASSIS
BATTERY
POSITIVE POST

TO GROUND BAR
BEHIND STEP BOX

CABLE ASM (BLK)
CHASSIS GROUND EXT (REF)

VIEW AA

CABLE ASM (RED)
STARTER (REF)

WIRE ASM-CHASSIS
00008001 / 310699-01-000

TO FRONT RIGHT
SLIDEOUT FRONT MOTOR

4 PIN HOUSING
TO ELECTRIC STEP
MP,KD
TO STEP DOOR
JAMB SWITCH

BATTERY INSTL
191493-03-000

SEAL-TRIM
113452-02-000 (153 MM) 8

110V
(BRN-2,BLU,BLK)
MAIN DROP TO
WIRE ASM-COACH
& WIRE ASM-ROOF

WIRE ASM-INVERTER
(REF) 401 4

TO FORD SUPPLIED
TAILLAMP CIRCUIT

7 PIN HSG
TO TRAILER
CONNECTOR

TO GROUND BOLT

6 PIN HSG
TO BACKWALL

CABLE ASM-
GENERATOR GND (BLK)
TO GROUND STUD

8 PIN HOUSING
TO GENERATOR

GROUNDS
DETAIL BB

CABLE ASM-
GENERATOR (GRN) 4

GROMMET
023942-01-000

TO FRONT LEFT
SLIDEOUT REAR MOTOR

WIRING TO SLIDEROOM
(BLK,BRN-2)

(RED,YEL,PUR)
TO CHASSIS
ELECTRICAL BOX
(BLU)

TO CHASSIS
ELECTRICAL BOX

CABLE ASM (PUR)
CHASSIS BATTERY
DISCONNECT RETURN
(REF)

GROUND STUD
NUT
D39-05-00U

CHASSIS SUPPLIED YEL
& BLK/ORG CABLES 10 7

ENGINE GROUND CABLES 10 9

STUD-ISOLATED
86233-01-000 (2)
NUT
D39-06-00U (2)
SCREW
G39-08-12U (4)

CHASSIS SUPPLIED
RED CABLE 10 7

FOR ELECTRICAL
TORQUE
SPECIFICATIONS
SEE DWG NO.
128783-01-000

FOR
ELECTRICAL
CALLOUTS
SEE DWG NO.
121339-01-000

WIRING TO SLIDEROOM
& MODULE-110V (BLU)

GROMMET
023942-01-000

GROMMET
023942-02-000

CHASSIS ELECTRICAL
BOX ASM
191494-03-000

TO WIRE ASM-
ELECTRICAL BOX

MP,JT
TO LP TANK

GROMMET
023942-01-000

LEVELING SYSTEM
POWER CABLE

TOP OF RAIL

DATUM

TO CHASSIS
BATTERY
POSITIVE POST

TO GROUND BAR
BEHIND STEP BOX

CABLE ASM (BLK)
CHASSIS GROUND EXT (REF)

VIEW AA

CABLE ASM (RED)
STARTER (REF)

- NOTES:
1. WIRE TIE 8343-04-000. FASTEN EVERY 600MM MINIMUM.
 2. SECURE CONDUIT 41953, TAB AS REQUIRED, OVER ALL WIRES IN CONTACT WITH SHARP EDGES.
 3. ALL DIMENSIONS ARE FROM DATUM UNLESS OTHERWISE SPECIFIED.
 4. SEE BATTERY INSTALLATION FOR ADDITIONAL INFORMATION.
 5. CLAMP 83610-01-000, SCREW G11-10-16B.
 6. SEE WIRING INSTL-FRONT END FOR ADDITIONAL INFORMATION.
 7. CUT CHASSIS SUPPLIED POSITIVE BATTERY CABLE 150 MM FROM BATTERY TERMINAL END,DISCARD TERMINAL END AND SEPARATE WIRES. ADD TERMINAL 8348-01-000 AND HEAT SHRINK 176567-04-000 TO RED CABLE (CHASSIS STARTER) AND COMBINE YELLOW (CHASSIS POWER DISTRIBUTION) AND BLACK/ORANGE (CHASSIS ALTERNATOR) WIRES TOGETHER AND ADD TERMINAL 8348-01-000 AND HEAT SHRINK 176567-02-000. COIL EXCESS CABLE ALONG FRAME RAIL JUST BEHIND RADIATOR AND TIE UP WITH TIE-WIRE 8343-04-000.
 8. COVER SHARP EDGES WHERE WIRE CROSSES FRAME RAILS.
 9. CUT CHASSIS SUPPLIED BATTERY CABLE 700MM FROM BATTERY TERMINAL AND ADD TERMINAL 8348-01-000 TO CUT END.
 10. SUPPLIED WITH CHASSIS

- 401 INVERTER-DC/AC, 1000 WATT
- 265 CODES/STANDARDS-CSA/CMVSS
- 1B1 CODES/STANDARDS USA

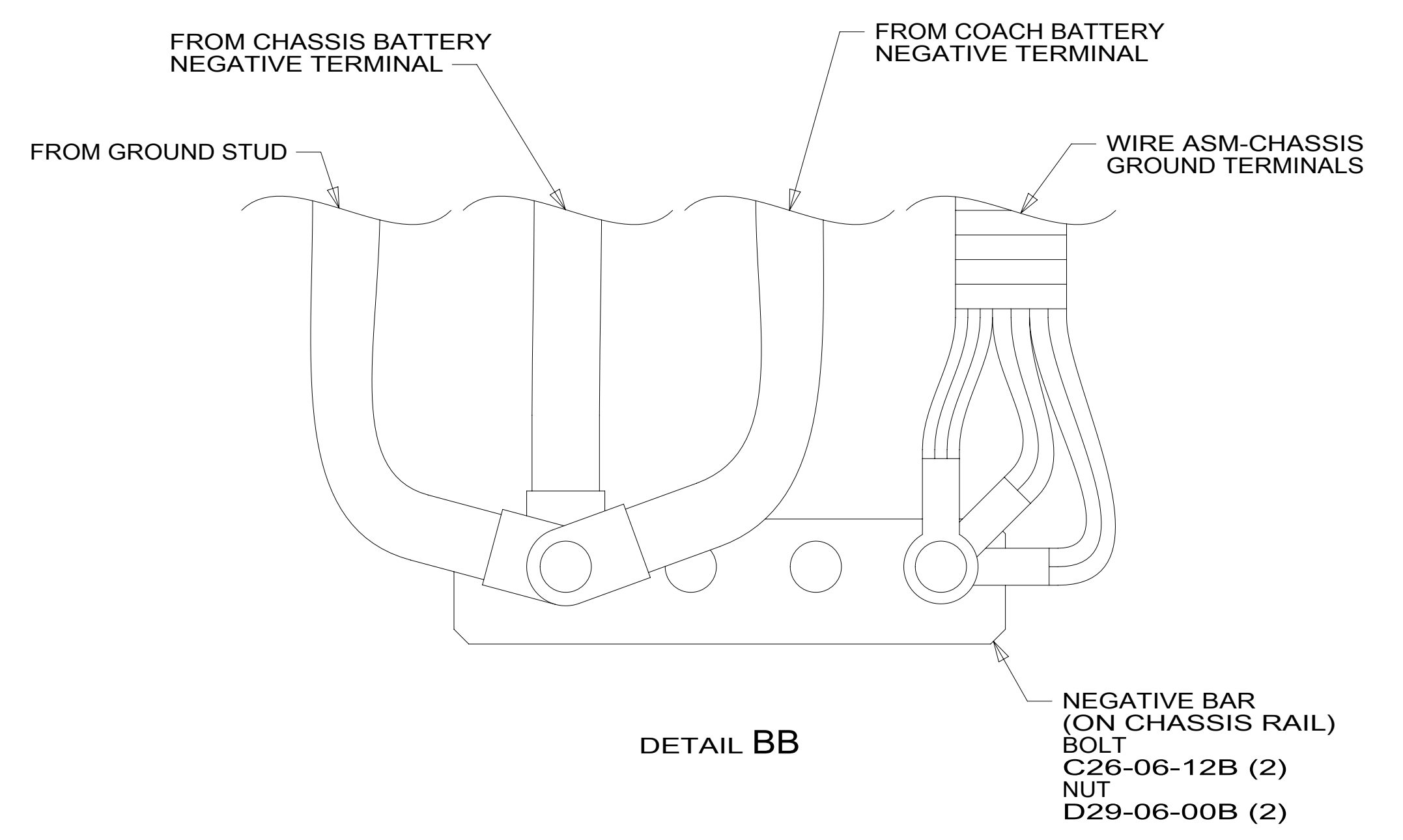
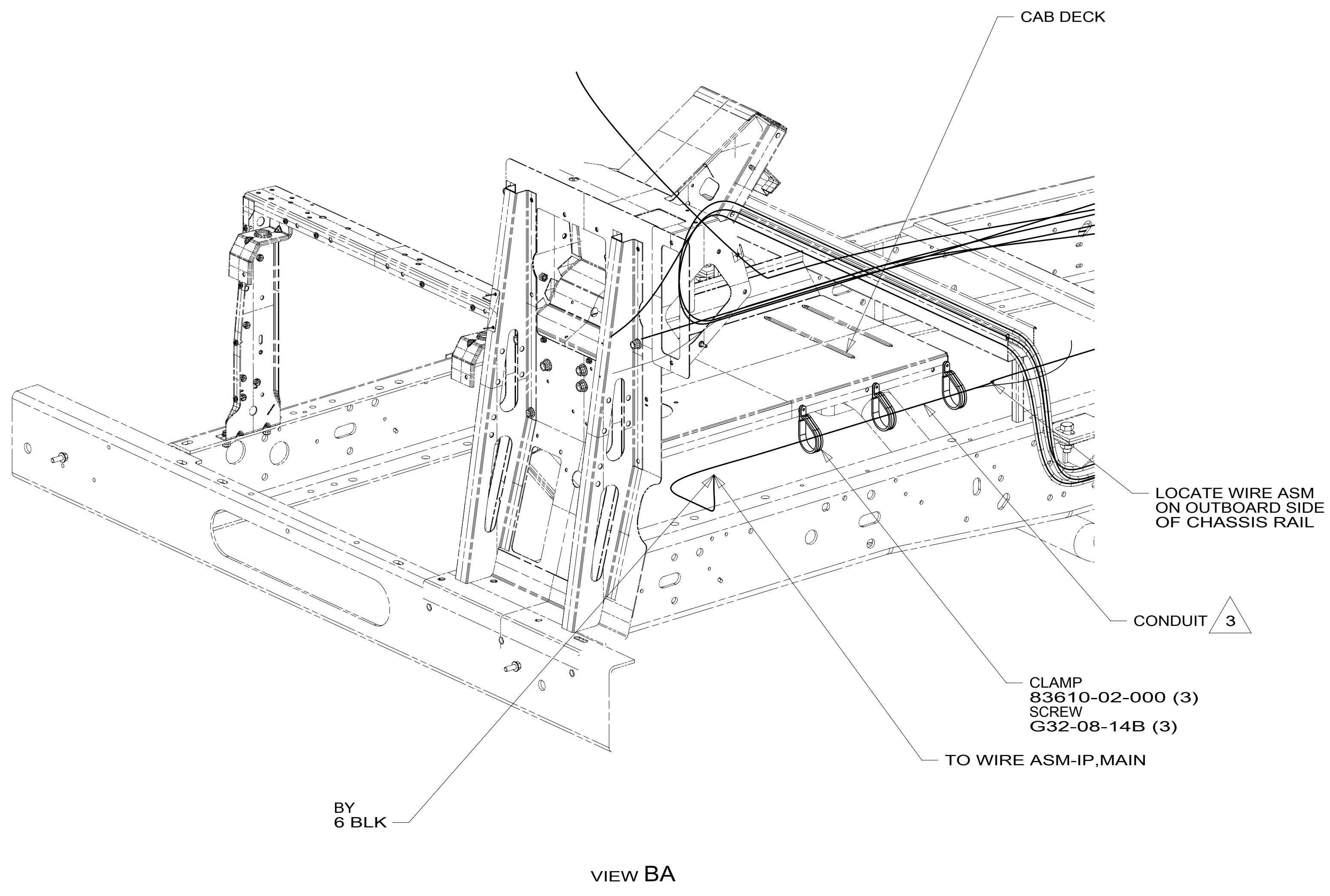
1B1 265

WINNEBAGO
COPYRIGHT 2016 WINNEBAGO INDUSTRIES, INC.

DSNR:		ALL DIMENSIONS ARE IN MILLIMETERS
DFFR:		
UNSPECIFIED TOLERANCES:		MATERIAL:
WHOLE DIM (X) :	3	
ONE-PLACE (X.X) :	1.5	
TWO-PLACE (X.XX) :	0.50	
ANGLE :	1°	
REFER TO ES0018 FOR FASTENER TIGHTENING GUIDELINES	WEIGHT: (LBS)	FIRST USED:
DESCRIPTION: WIRING INSTL-CHASSIS		
SHEET: 1 OF 2	ITEMPART NO: 000201193 / 3019120100	REV
REF:		1 20-Sep-2016

8 7 6 5 4 3 2 1

D
C
B
A



3 COVER WITH CONDUIT 41953-10-000 AND 41953-11-000 AS REQUIRED.

- 2. CONNECT CABLES TO COACH SIDE OF BATTERY DISCONNECT WHEN BATTERY DISCONNECT IS USED.
- 1. CUT OFF EXCESS END OF WIRE TIE.

NOTES:

FOR ELECTRICAL TORQUE SPECIFICATIONS SEE DWG NO. 128783-01-000

FOR ELECTRICAL CALLOUTS SEE DWG NO. 121339-01-000

265 CODES/STANDARDS-CSA/CMVSS
1B1 CODES/STANDARDS USA

DESCRIPTION:		1B1 265
WIRING INSTL-CHASSIS		
SHEET:	ITEM/PART NO.:	REV
2 OF 2	000201193 / 30191201000	

8 7 6 5 4 3 2 1 20-Sep-2016