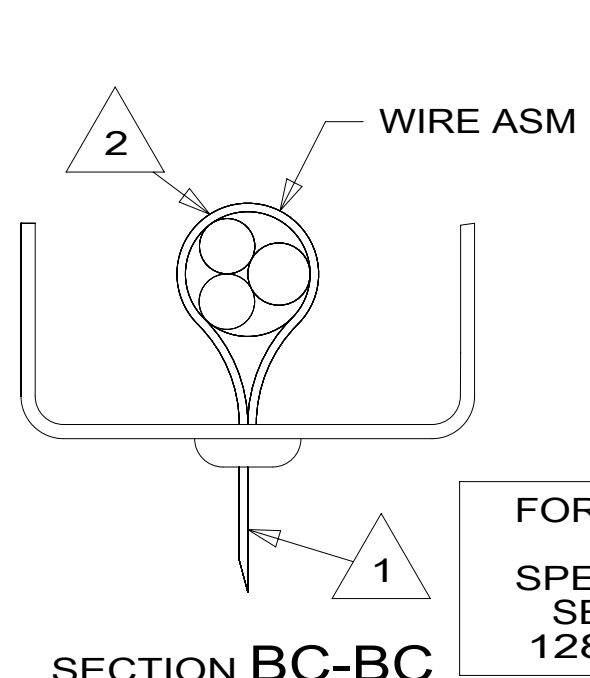
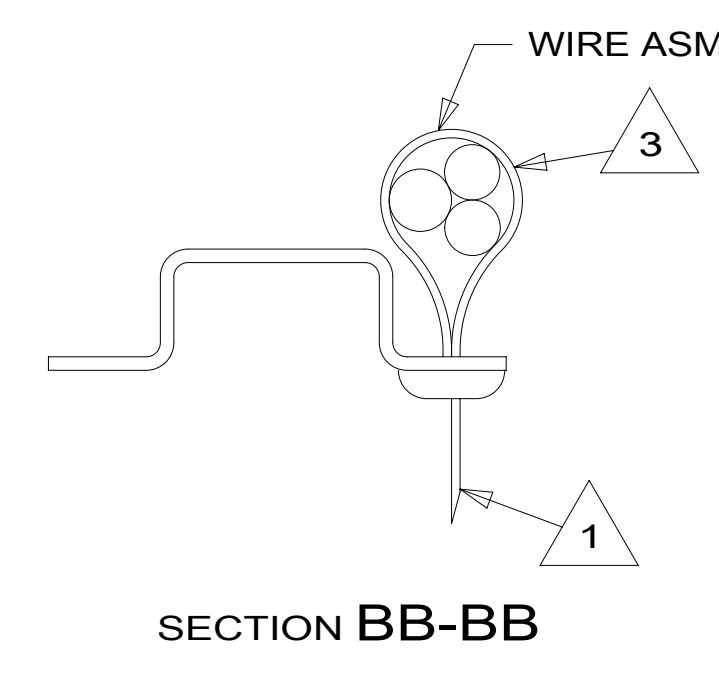
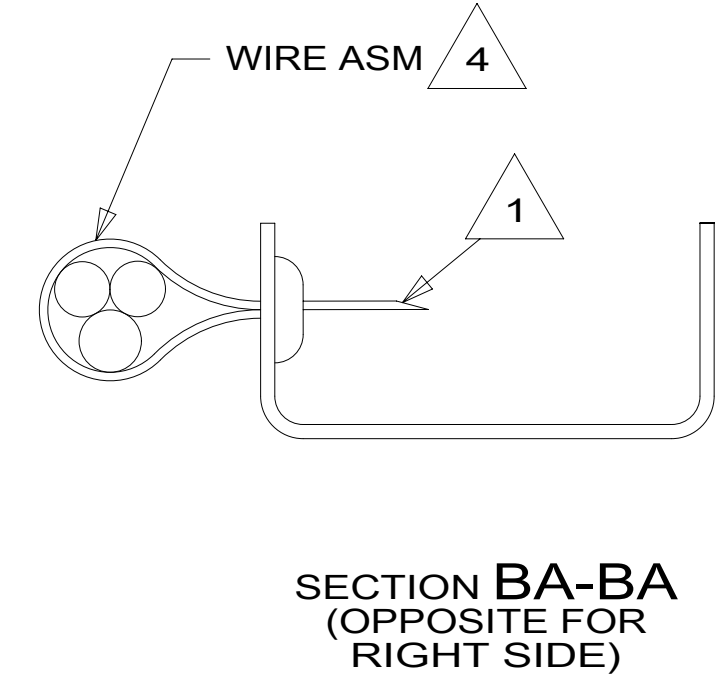


- NOTES:
- 6 SEE BATTERY INSTL FOR ADDITIONAL INFORMATION.
 - 5 SEE LOAD CENTER/ATS ASM FOR ADDITIONAL INFORMATION.
 - 4 WIRES TO BE TIED TO CROSS MEMBER USING EXISTING HOLES.
 - 3 WIRES TO BE TIED TO TOP OF RAIL USING EXISTING HOLES.
 - 2 WIRES TO BE TIED TO INSIDE OF RAIL USING EXISTING HOLES.
 - 1 CUT OFF EXCESS END OF WIRE TIE.

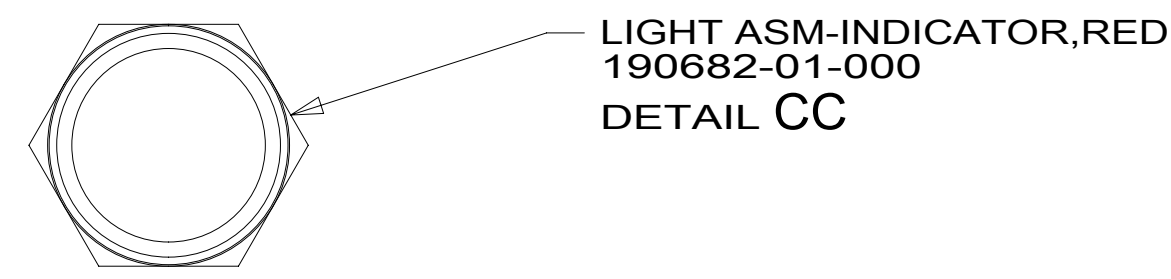


FOR ELECTRICAL TORQUE SPECIFICATIONS SEE DWG NO. 128783-01-000

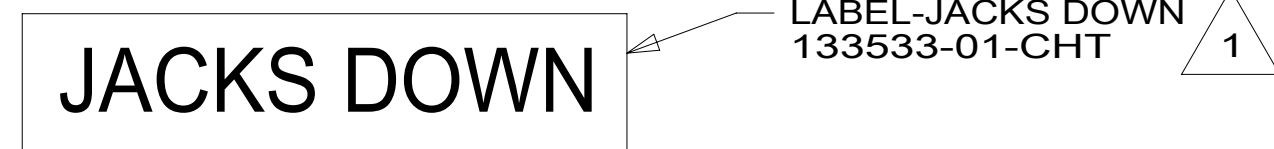
FOR ELECTRICAL CALLOUTS SEE DWG NO. 121339-01-000

- 60M HYDRAULIC LEVEL JACKS-AUTO
- 16Y FORD CHASSIS - 14,500#_GVWR
- 265 CODES/STANDARDS-CSA/CMVSS
- 1B1 CODES/STANDARDS USA

DESCRIPTION:		1B1 265 16Y	
WIRING INSTL-CHASSIS			
SHEET:	ITEM/PART NO.:	REV:	
2 OF 4	000201048 / 30150701000		

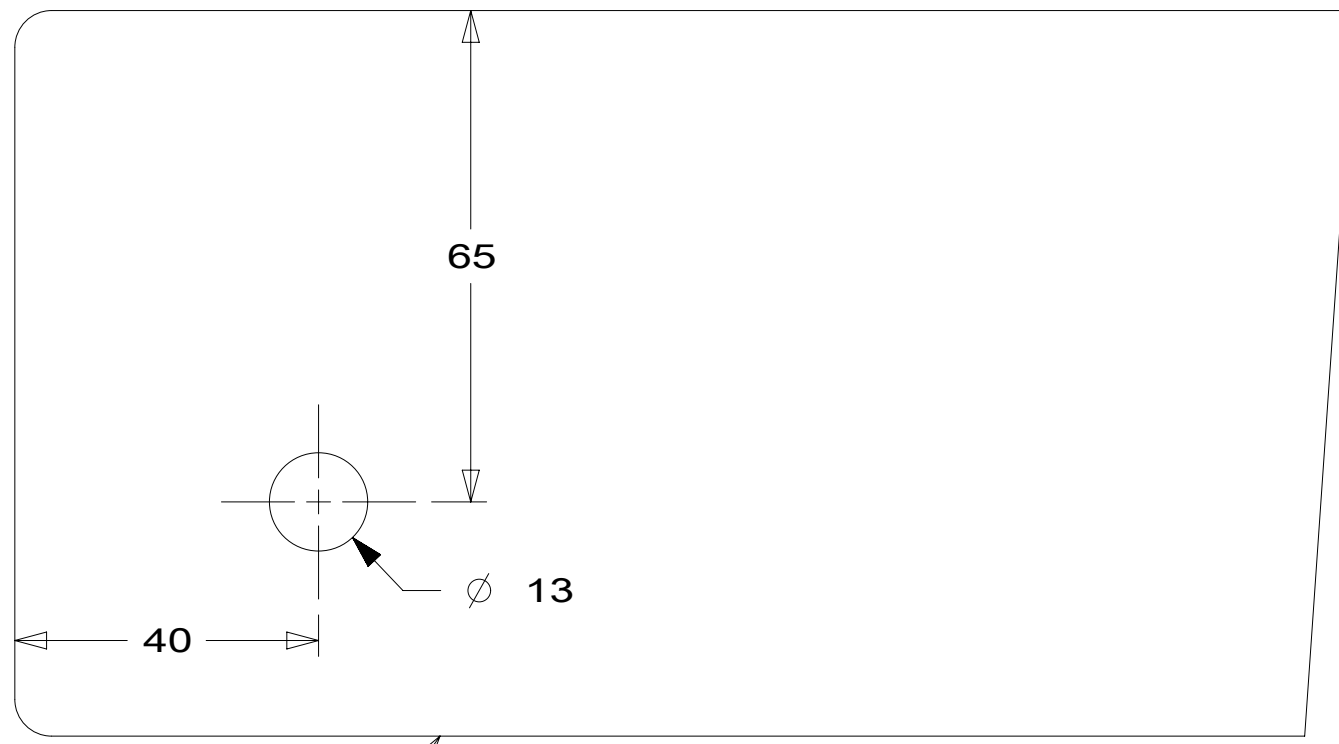


LIGHT ASM-INDICATOR,RED
190682-01-000
DETAIL CC



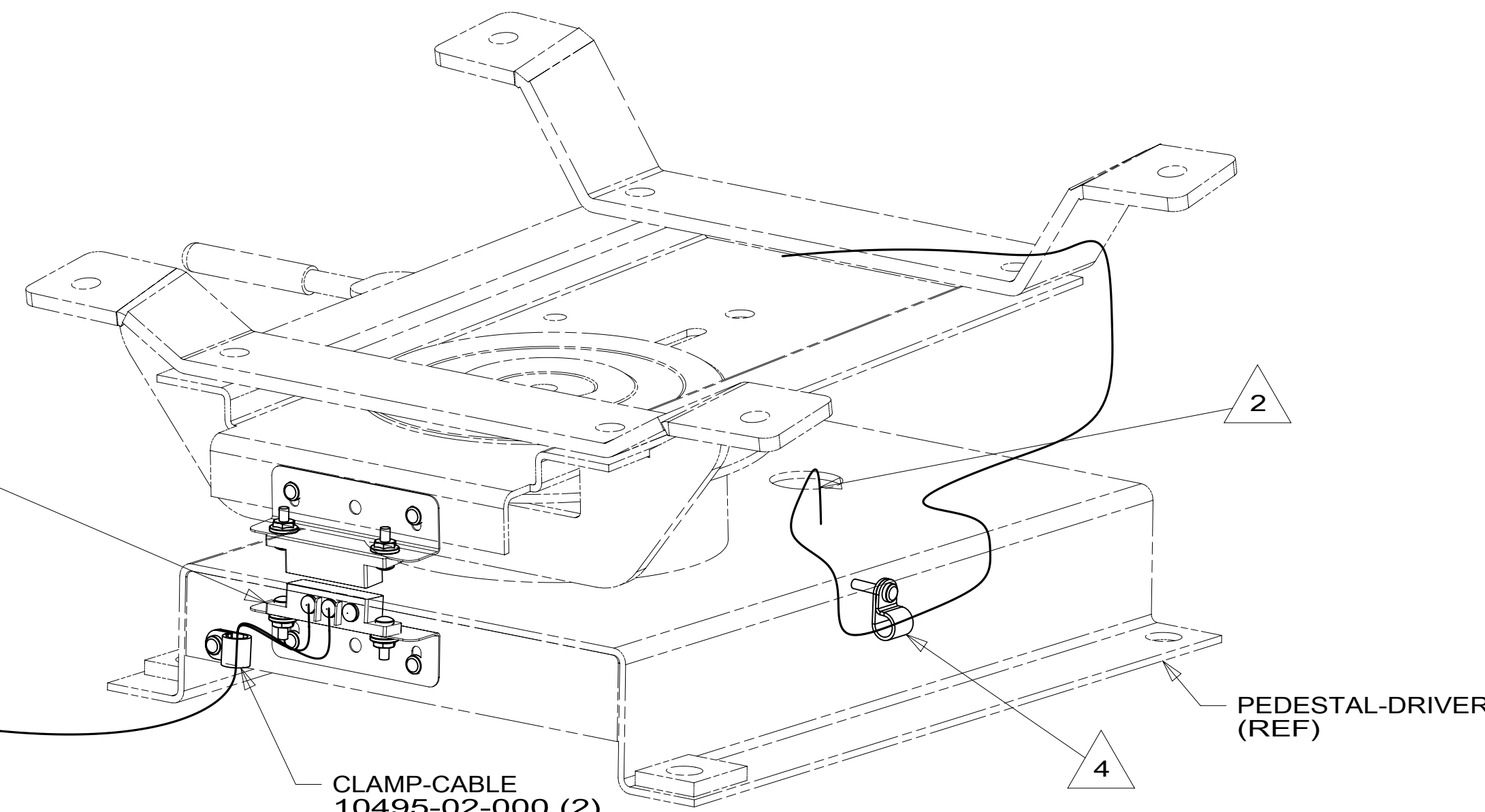
LABEL-JACKS DOWN
133533-01-CHT

DETAIL CA 60M



LEFT SIDE OF STEERING COLUMN
DETAIL CD 60M

BRACKET-SWITCH MOUNT
187994-01-CHT (2)
SCREW
G39-08-08U (4)
SWITCH-MAGNET
187753-01-CHT
SCREW-MACHINE
G18-08-10U (4)
NUT-HEX
D65-08-00U (4)
DETAIL CH

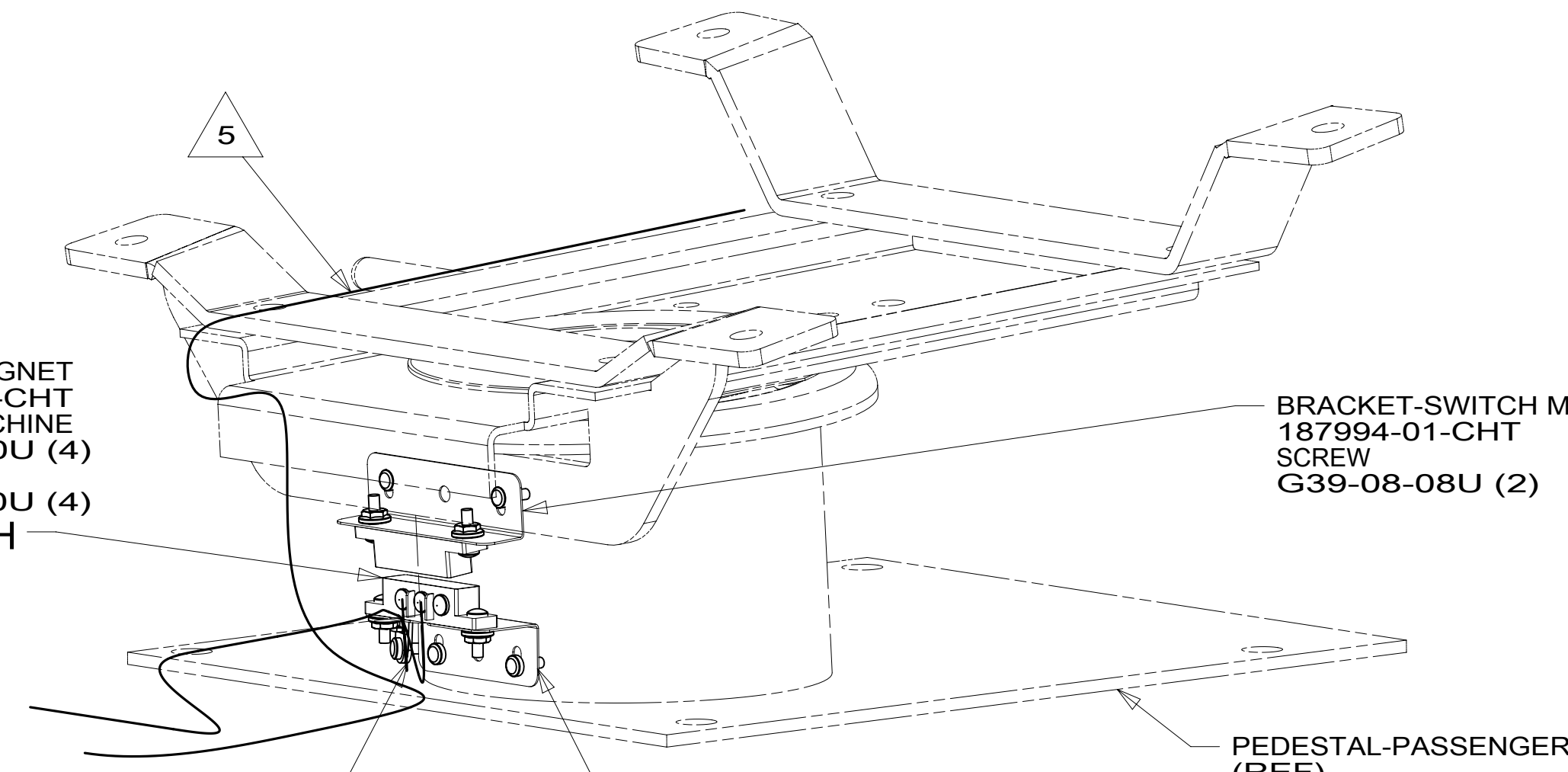


DETAIL CF

CLAMP-CABLE
10495-02-000 (2)
SCREW
G39-08-06U (2)

PEDESTAL-DRIVER
(REF)

SWITCH-MAGNET
187753-01-CHT
SCREW-MACHINE
G18-08-10U (4)
NUT-HEX
D65-08-00U (4)
DETAIL CH



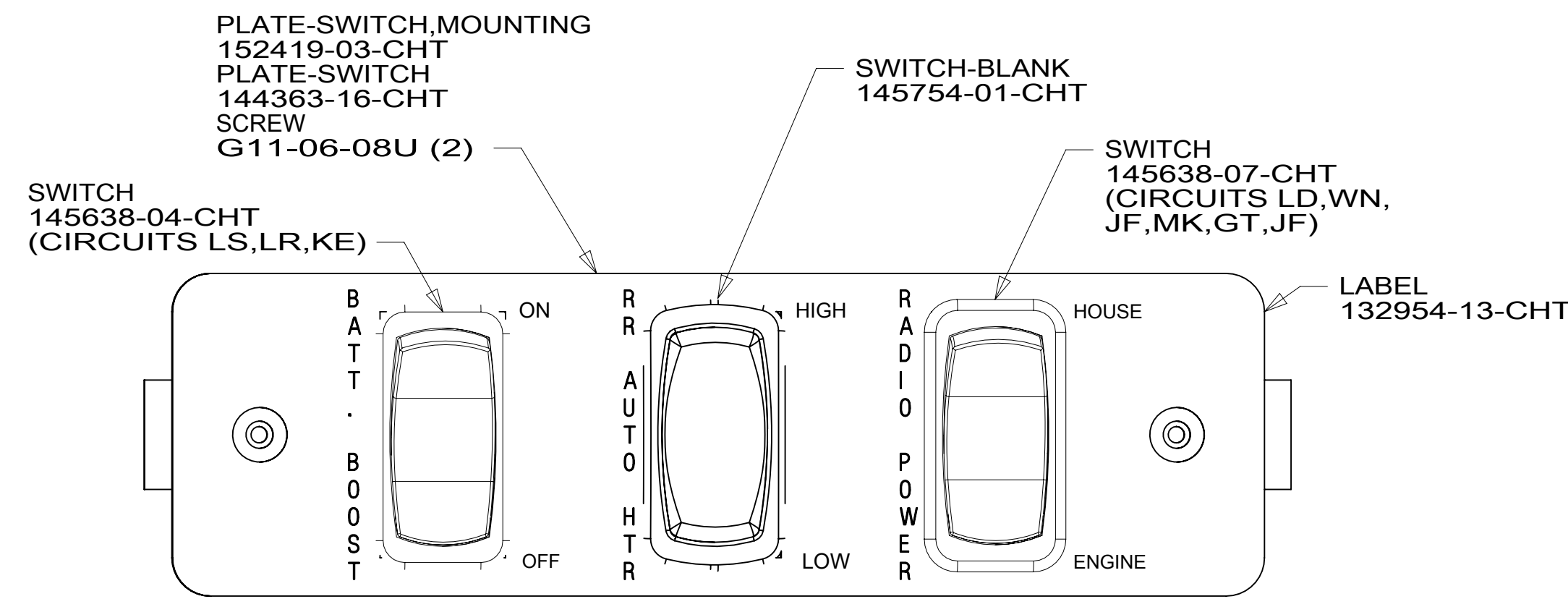
DETAIL CG

CLAMP-CABLE
10495-02-000
SCREW
G39-08-06U

BRACKET-SWITCH MOUNT
187994-01-CHT
SCREW
G39-08-08U (2)

PEDESTAL-PASSENGER
(REF)

- NOTES:
- 5 ATTACH WIRE TIE 116673-01-000 TO FORD SEAT WIRING.
 - 4 INSTALL CLAMP FOR FORD SEAT WIRING.
 - 3 PART OF WIRE ASM-CHASSIS.
 - 2 COVER WIRING WITH CONVOLUTE 41953-01-000 (150 MM) TO PROTECT WIRES FROM SHARP EDGES WHERE THEY PASS THROUGH SEAT PEDESTAL. SECURE BOTH ENDS TO WIRES WITH TAPE 8363-01-000.
 - 1 FOR HOLE SIZE AND LOCATION SEE DETAIL CD.



VIEW CB

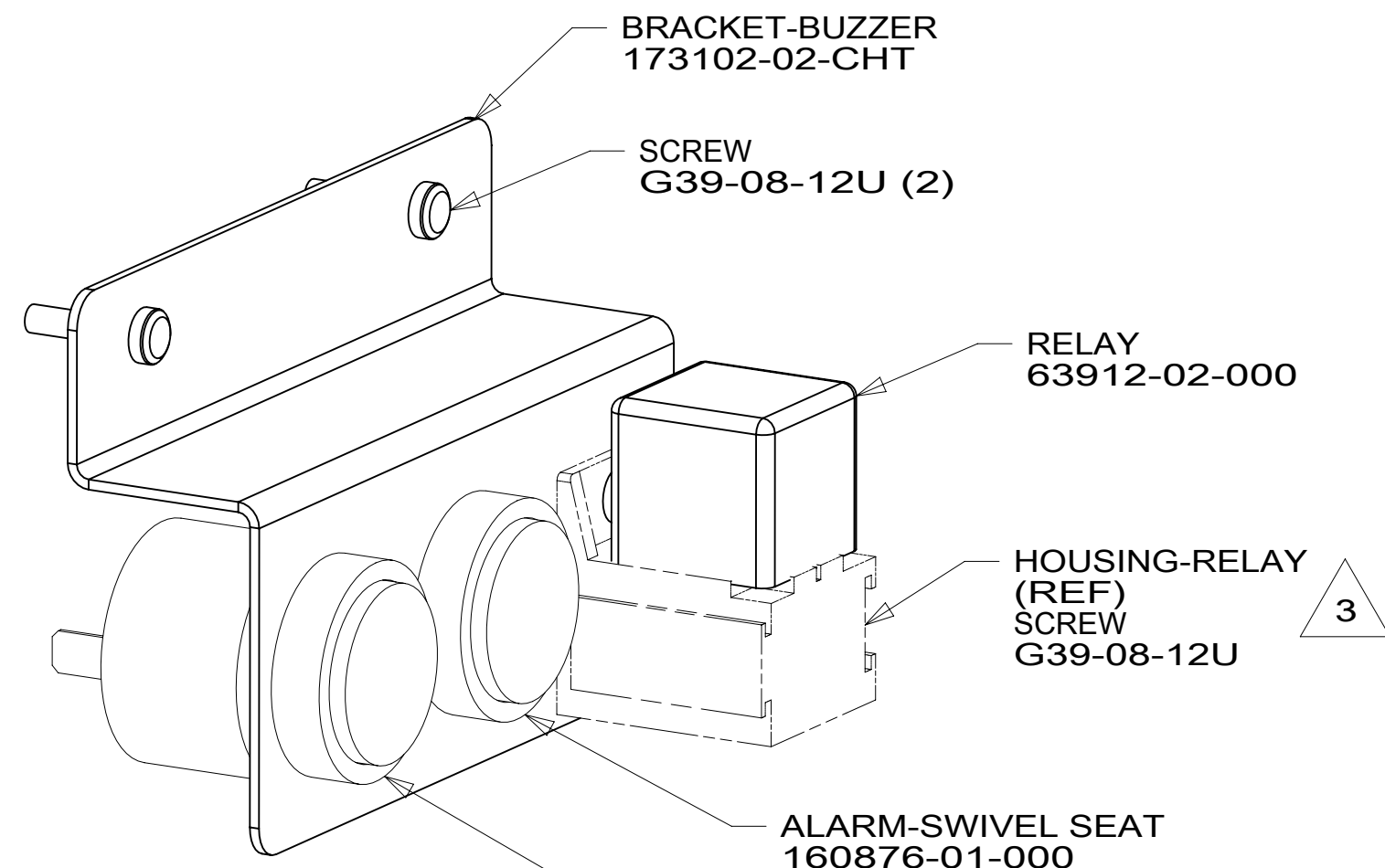
PLATE-SWITCH, MOUNTING
152419-03-CHT
PLATE-SWITCH
144363-16-CHT
SCREW
G11-06-08U (2)

SWITCH-BLANK
145754-01-CHT

SWITCH
145638-07-CHT
(CIRCUITS LD, WN,
JF, MK, GT, JF)

SWITCH
145638-04-CHT
(CIRCUITS LS, LR, KE)

LABEL
132954-13-CHT



DETAIL CE

BRACKET-BUZZER
173102-02-CHT

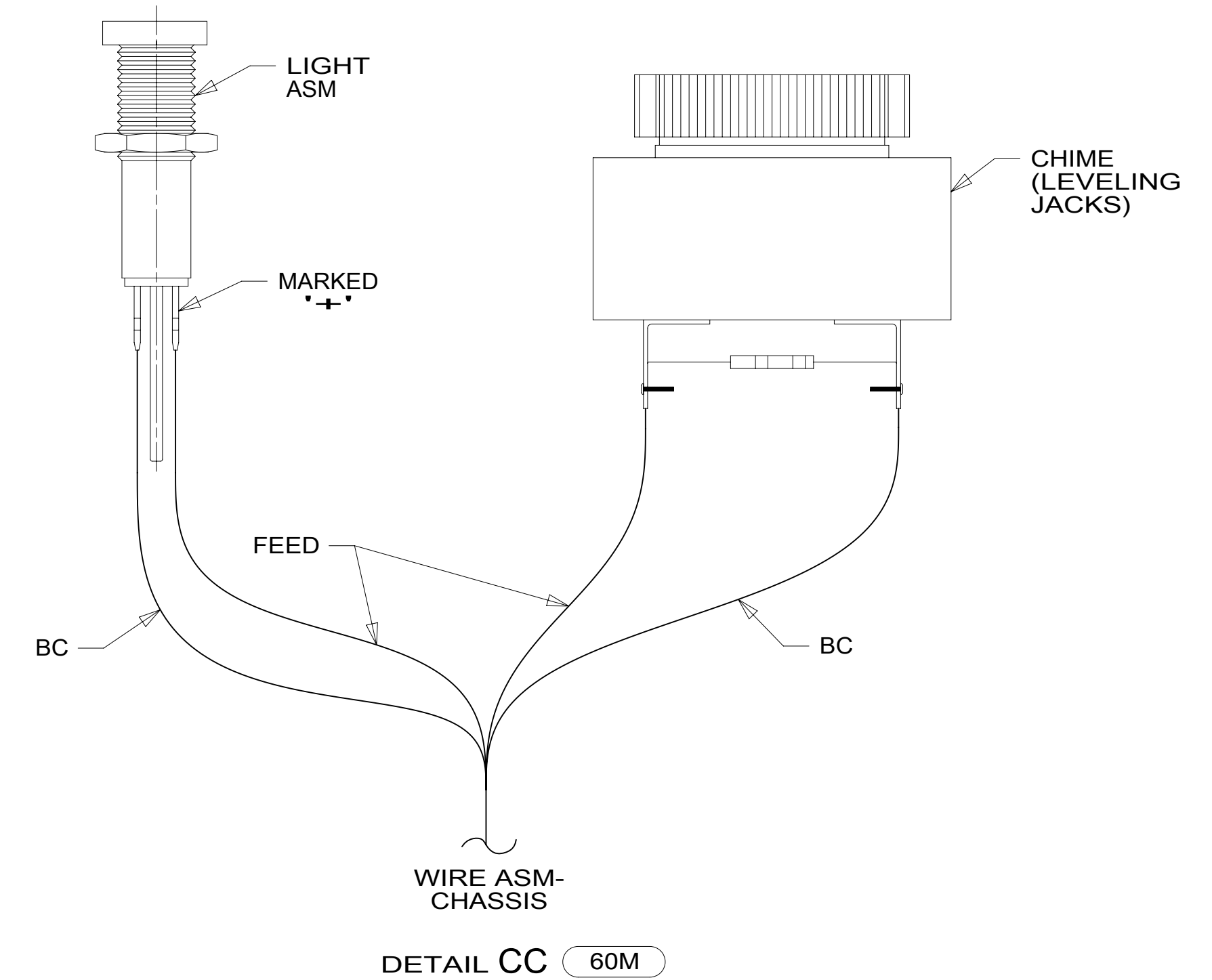
SCREW
G39-08-12U (2)

RELAY
63912-02-000

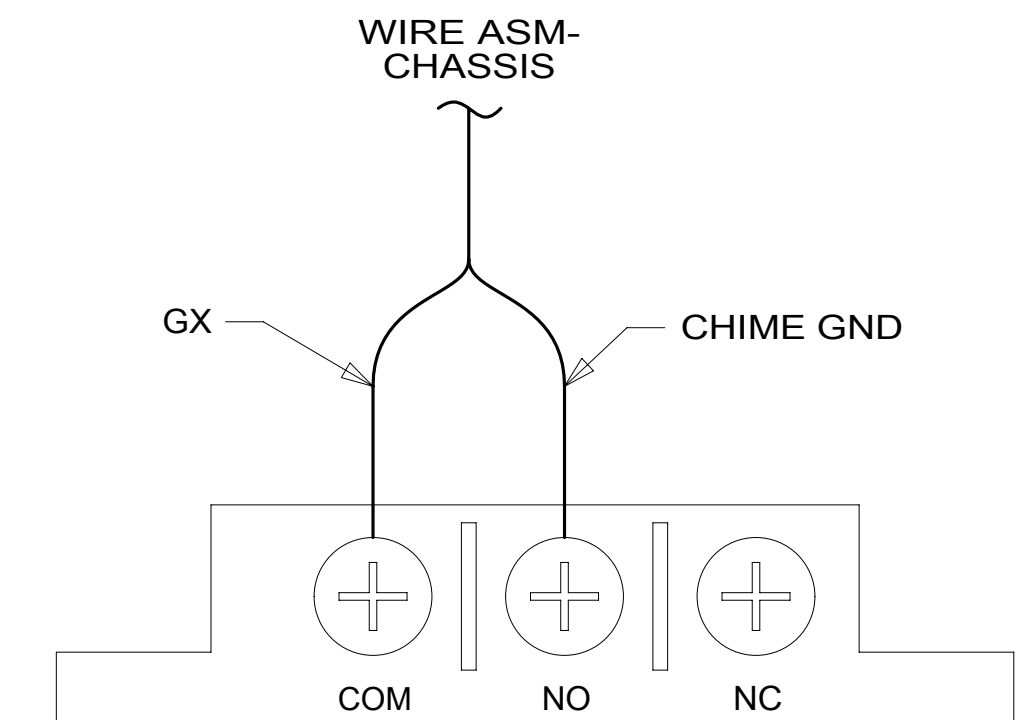
HOUSING-RELAY
(REF)
SCREW
G39-08-12U

ALARM-SWIVEL SEAT
160876-01-000

CHIME-JACKS DOWN
160876-01-000
DETAIL CC



DETAIL CC 60M



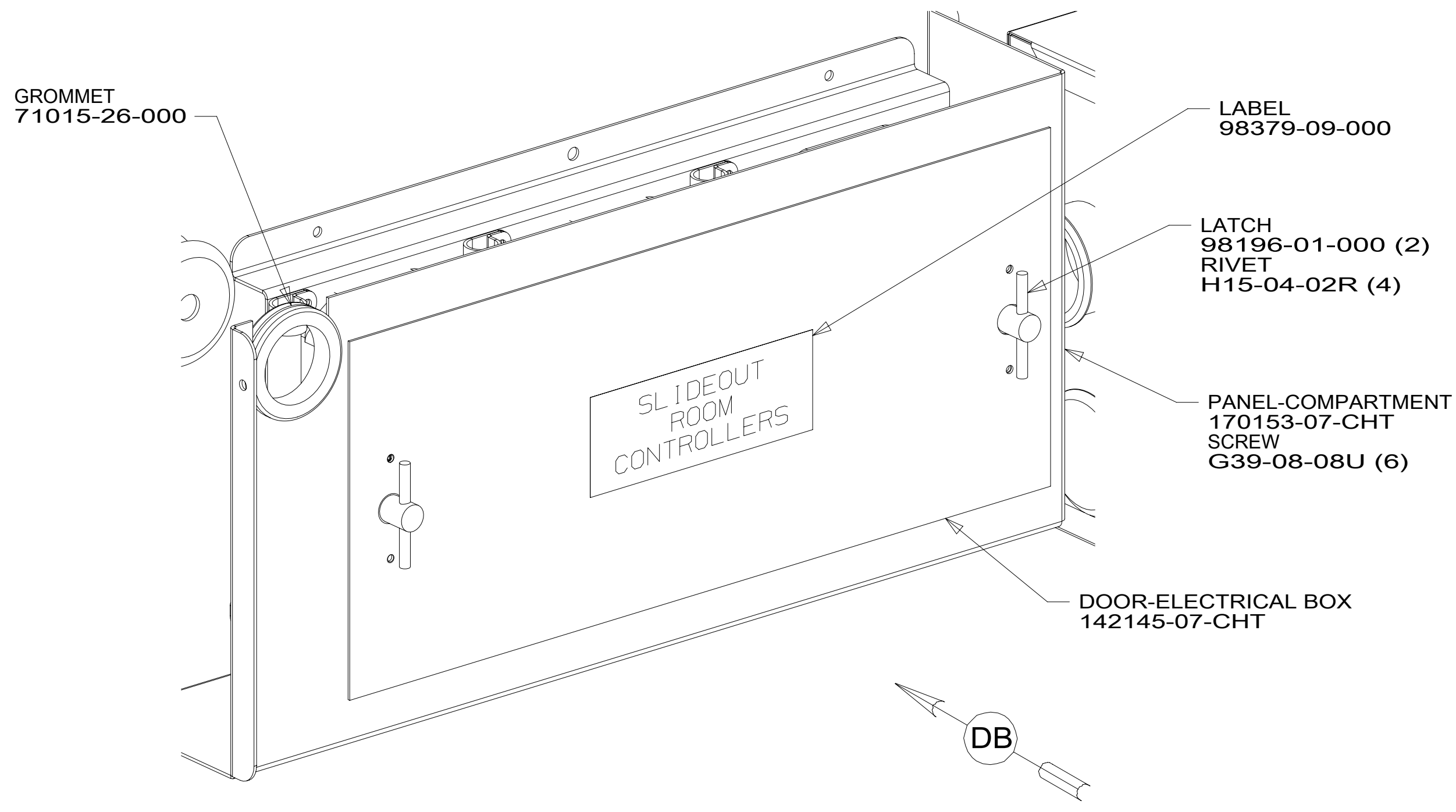
DETAIL CH

- 60M HYDRAULIC LEVEL JACKS-AUTO
- 16Y FORD CHASSIS - 14,500#_GVWR
- 265 CODES/STANDARDS-CSA/CMVSS
- 1B1 CODES/STANDARDS USA

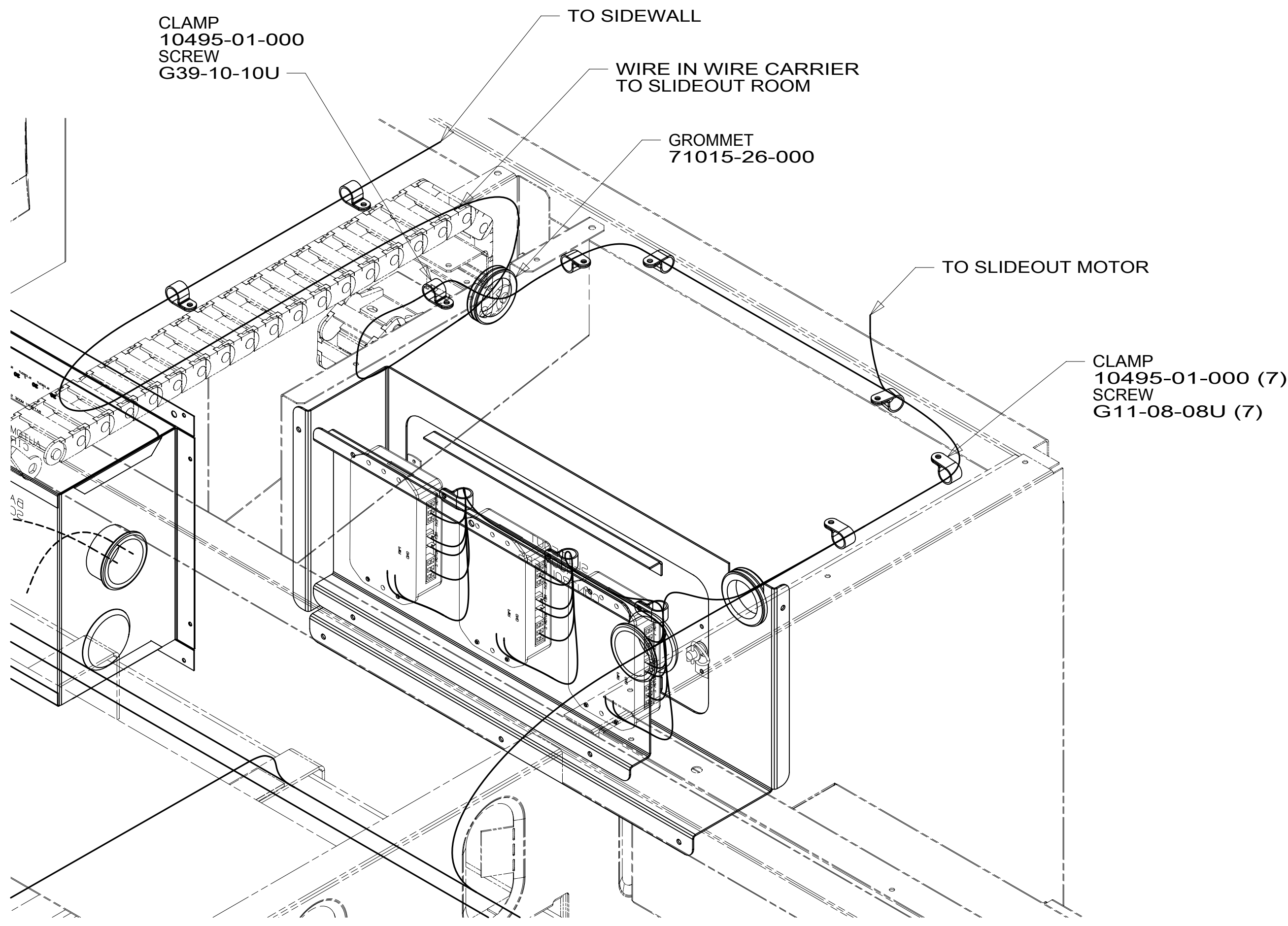
FOR ELECTRICAL TORQUE SPECIFICATIONS SEE DWG NO. 128783-01-000

FOR ELECTRICAL CALLOUTS SEE DWG NO. 121339-01-000

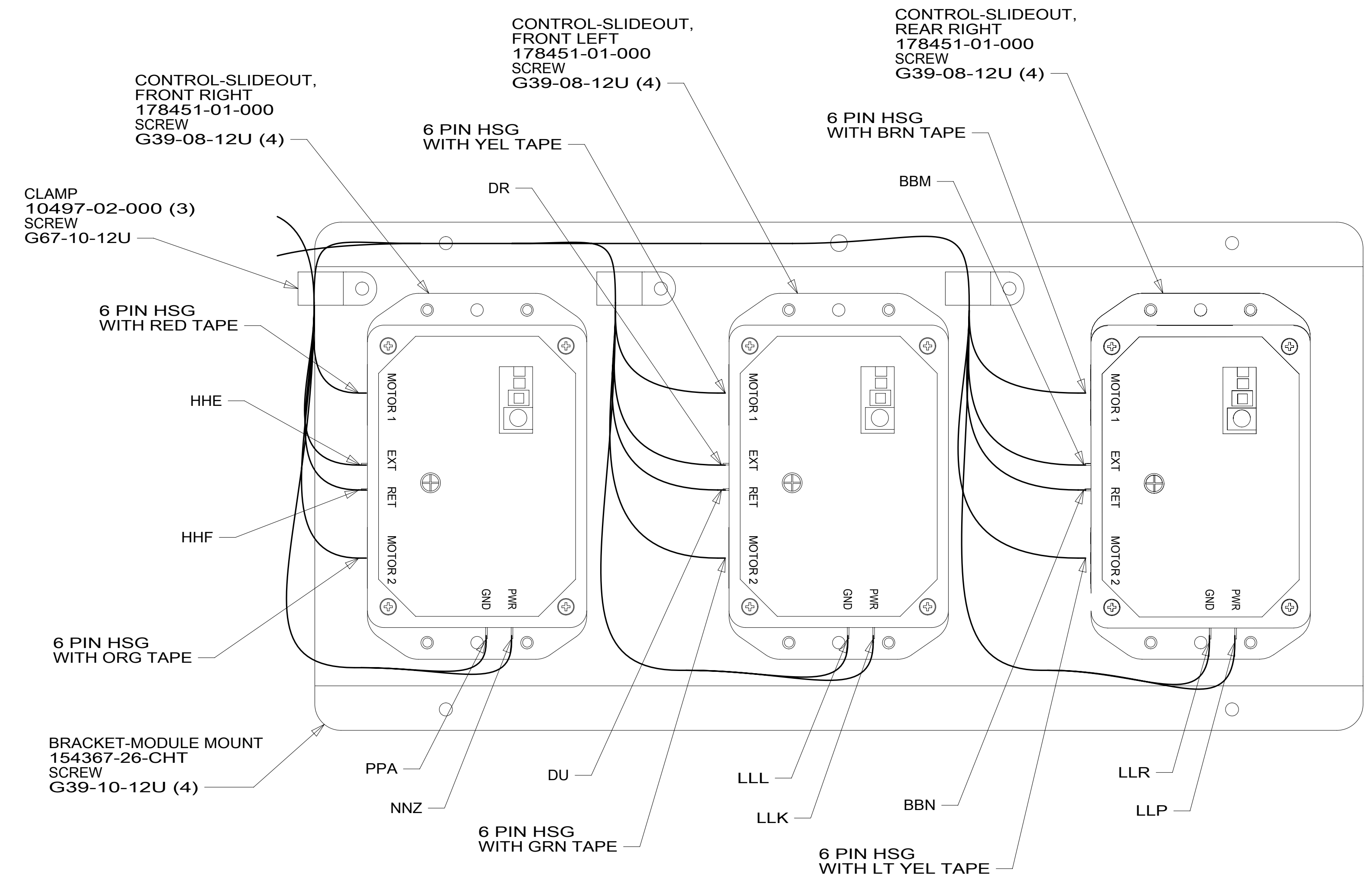
DESCRIPTION:	1B1 265 16Y	
WIRING INSTL-CHASSIS		
SHEET:	ITEM/PART NO:	REV
3 OF 4	000201048 / 30150701000	



VIEW DA



VIEW DC



VIEW DB

- 16Y FORD CHASSIS - 14,500#_GVWR
- 265 CODES/STANDARDS-CSA/CMVSS
- 1B1 CODES/STANDARDS USA

FOR ELECTRICAL TORQUE SPECIFICATIONS SEE DWG NO. 128783-01-000

FOR ELECTRICAL CALLOUTS SEE DWG NO. 121339-01-000

DESCRIPTION:	1B1 265 16Y	
WIRING INSTL-CHASSIS		
SHEET: 4 OF 4	ITEM/PART NO: 000201048 / 30150701000	REV