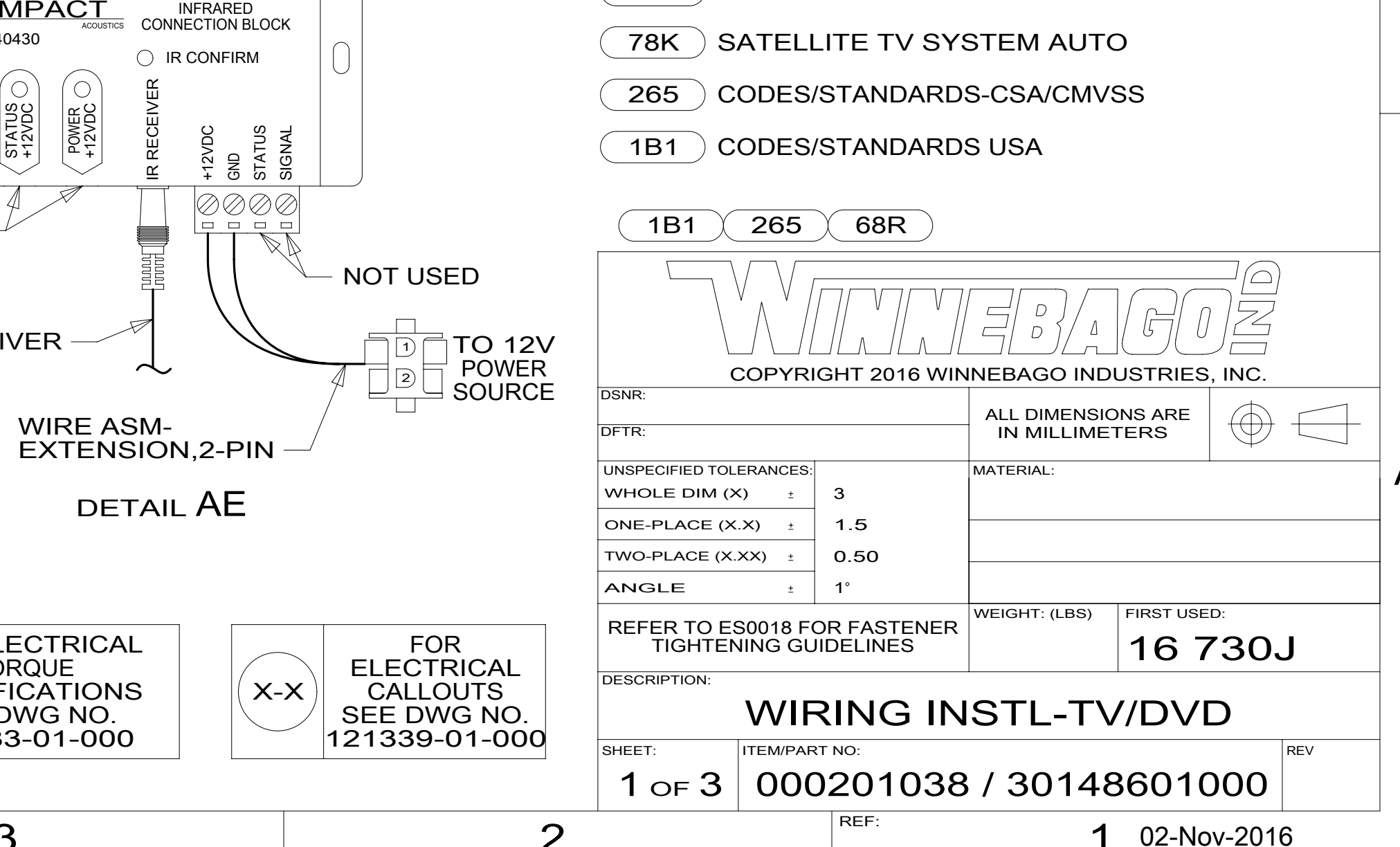
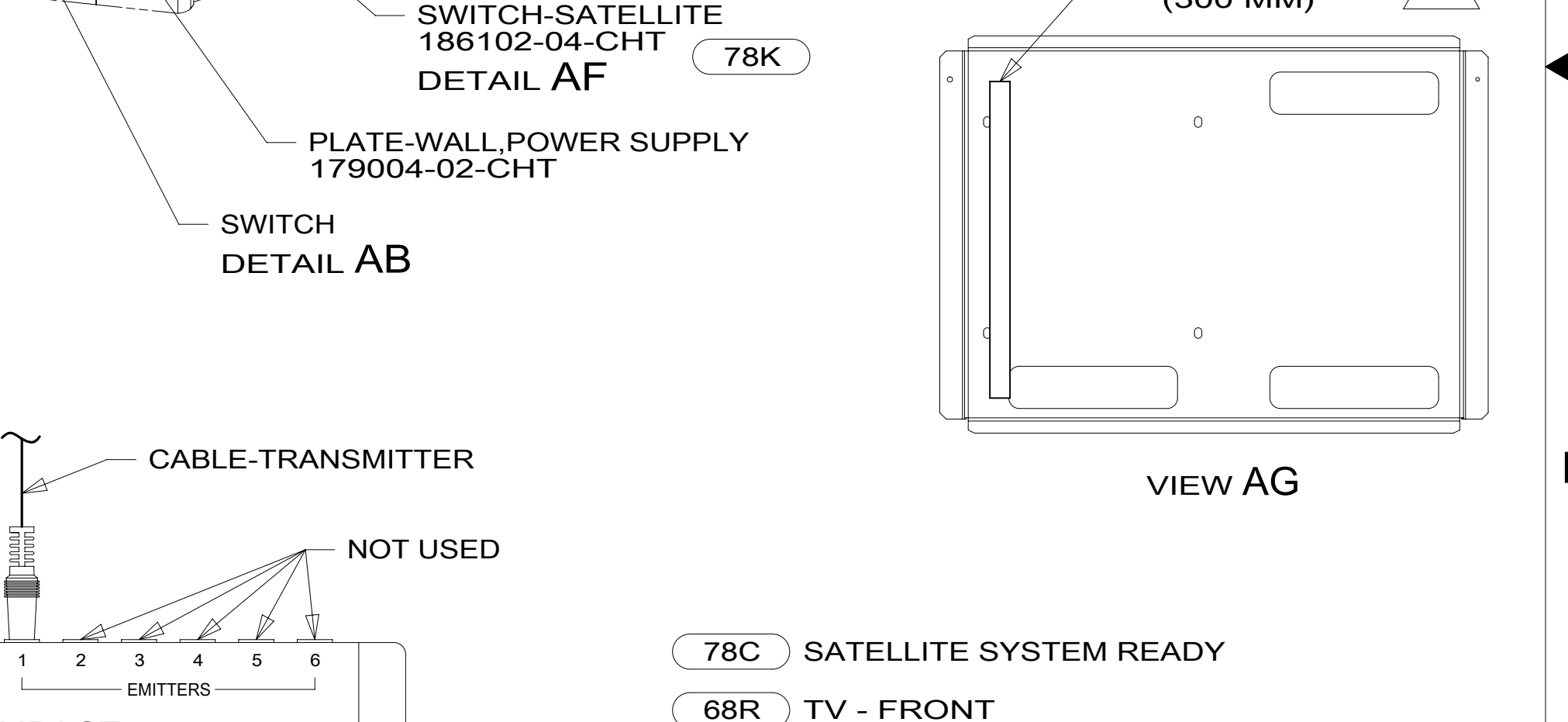
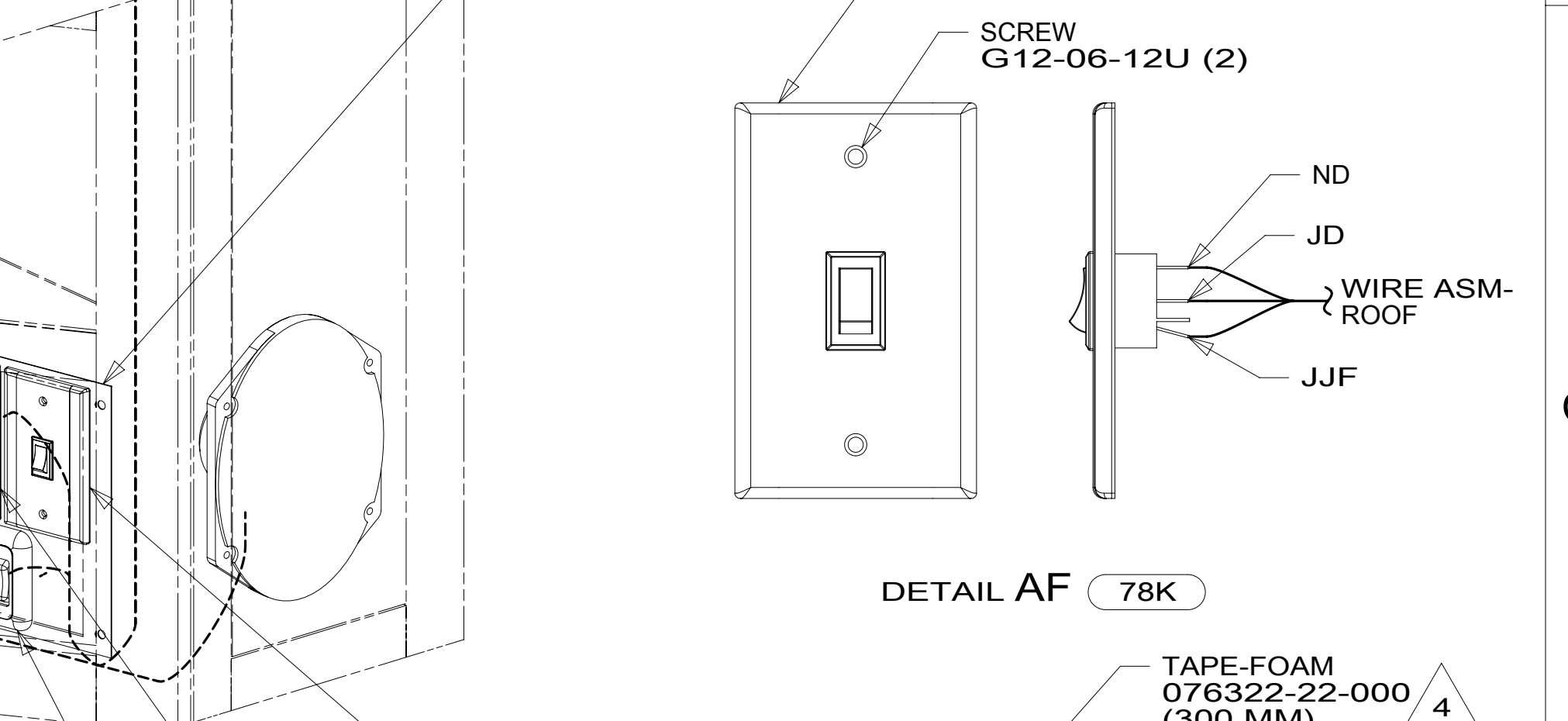
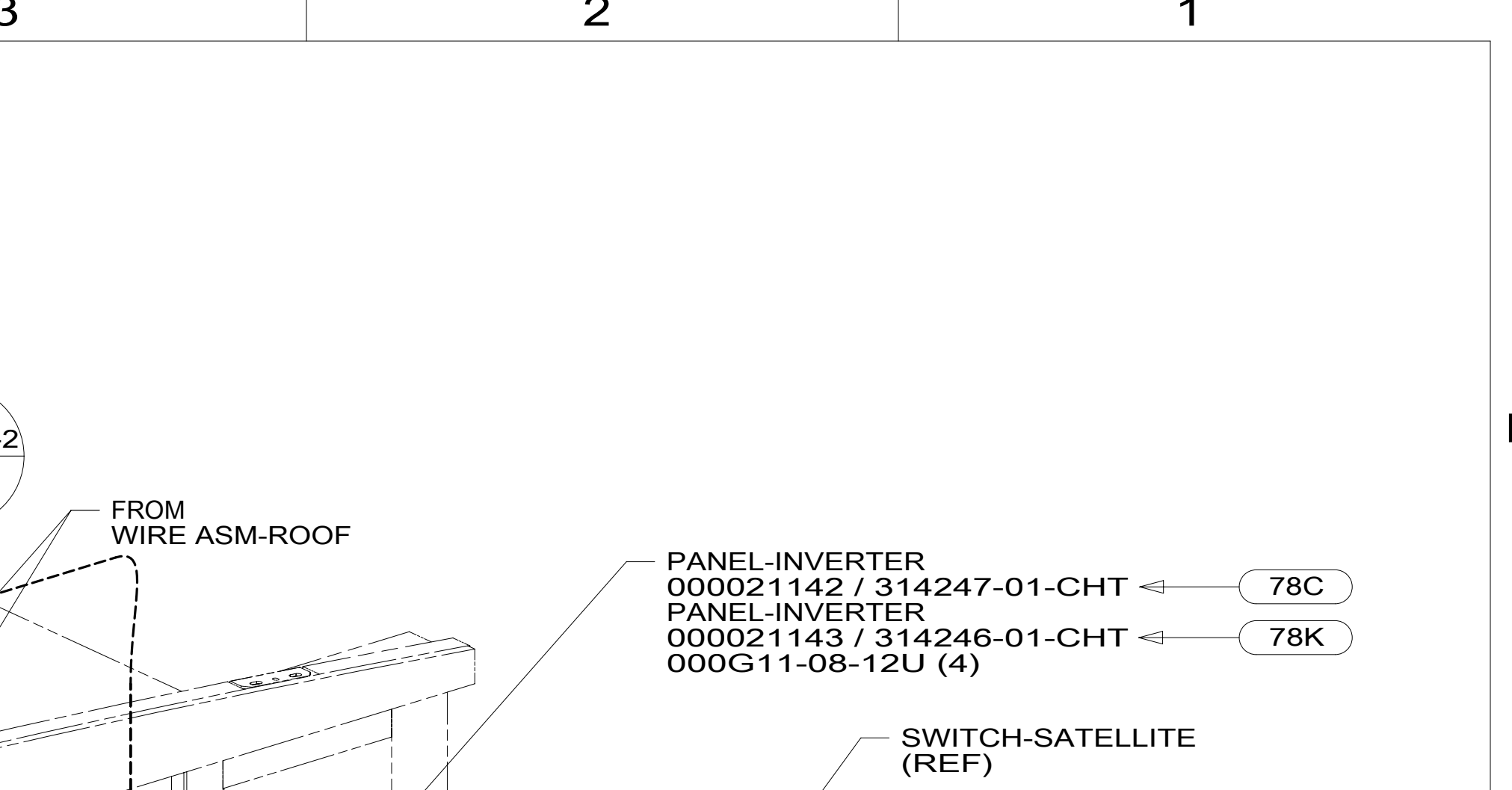


- NOTES:**
1. SEE WIRING INSTL-BODY, 12 & 110V FOR ADDITIONAL INFORMATION.
- 5 ALIGN RH SIDE OF COMPONENTS WITH CABINET OPENING.
  - 4 CLEAN AND PREP SURFACE WITH 87211-01-000.
  - 3 MOUNT BRACKET FLUSH TO OPENING.
  - 2 COIL SATELLITE HDMI CORD AND SECOND TRANSMITTER-INFRARED FOR FUTURE USE.

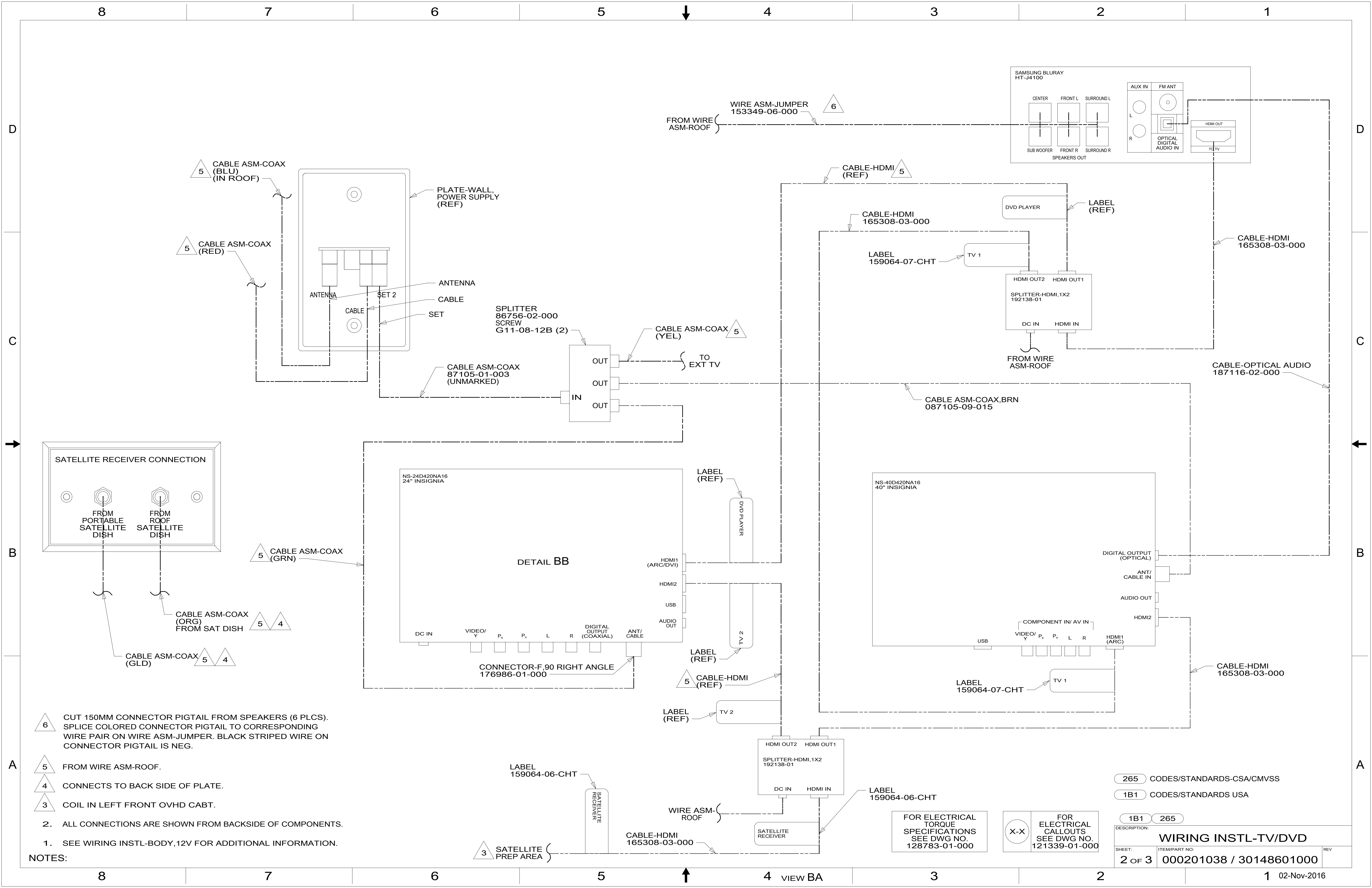


- 78C SATELLITE SYSTEM READY
- 68R TV - FRONT
- 78K SATELLITE TV SYSTEM AUTO
- 265 CODES/STANDARDS-CSA/CMVSS
- 1B1 CODES/STANDARDS USA

<b>WINNEBAGO</b>	
COPYRIGHT 2016 WINNEBAGO INDUSTRIES, INC.	
DSNR:	ALL DIMENSIONS ARE IN MILLIMETERS
DFFR:	
UNSPECIFIED TOLERANCES:	MATERIAL:
WHOLE DIM (X) :	3
ONE-PLACE (X.X) :	1.5
TWO-PLACE (X.XX) :	0.50
ANGLE :	1°
REFER TO ES0018 FOR FASTENER TIGHTENING GUIDELINES	WEIGHT: (LBS) FIRST USED:
	<b>16 730J</b>
<b>DESCRIPTION:</b>	
<b>WIRING INSTL-TV/DVD</b>	
SHEET:	ITEM/PART NO. REV
<b>1 OF 3</b>	<b>000201038 / 30148601000</b>
REF:	

FOR ELECTRICAL TORQUE SPECIFICATIONS SEE DWG NO. 128783-01-000

FOR ELECTRICAL CALLOUTS SEE DWG NO. 121339-01-000



- NOTES:**
- 6 CUT 150MM CONNECTOR PIGTAIL FROM SPEAKERS (6 PLCS). SPLICE COLORED CONNECTOR PIGTAIL TO CORRESPONDING WIRE PAIR ON WIRE ASM-JUMPER. BLACK STRIPED WIRE ON CONNECTOR PIGTAIL IS NEG.
  - 5 FROM WIRE ASM-ROOF.
  - 4 CONNECTS TO BACK SIDE OF PLATE.
  - 3 COIL IN LEFT FRONT OVHD CABT.
  - 2. ALL CONNECTIONS ARE SHOWN FROM BACKSIDE OF COMPONENTS.
  - 1. SEE WIRING INSTL-BODY, 12V FOR ADDITIONAL INFORMATION.

265	CODES/STANDARDS-CSA/CMVSS
1B1	CODES/STANDARDS USA
1B1	265
DESCRIPTION: <b>WIRING INSTL-TV/DVD</b>	
SHEET: 2 OF 3	ITEM/PART NO: 000201038 / 30148601000
REV 02-Nov-2016	

FOR ELECTRICAL TORQUE SPECIFICATIONS SEE DWG NO. 128783-01-000

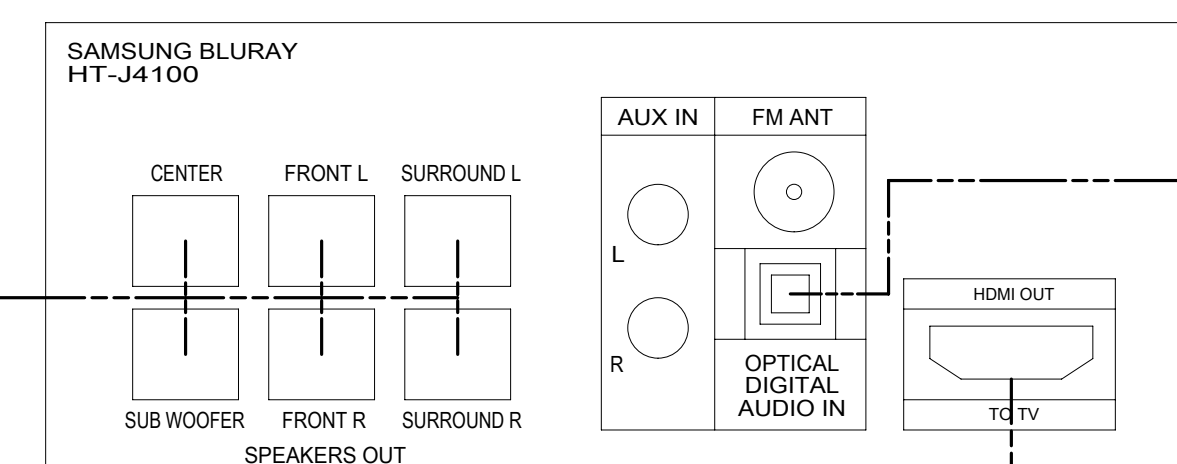
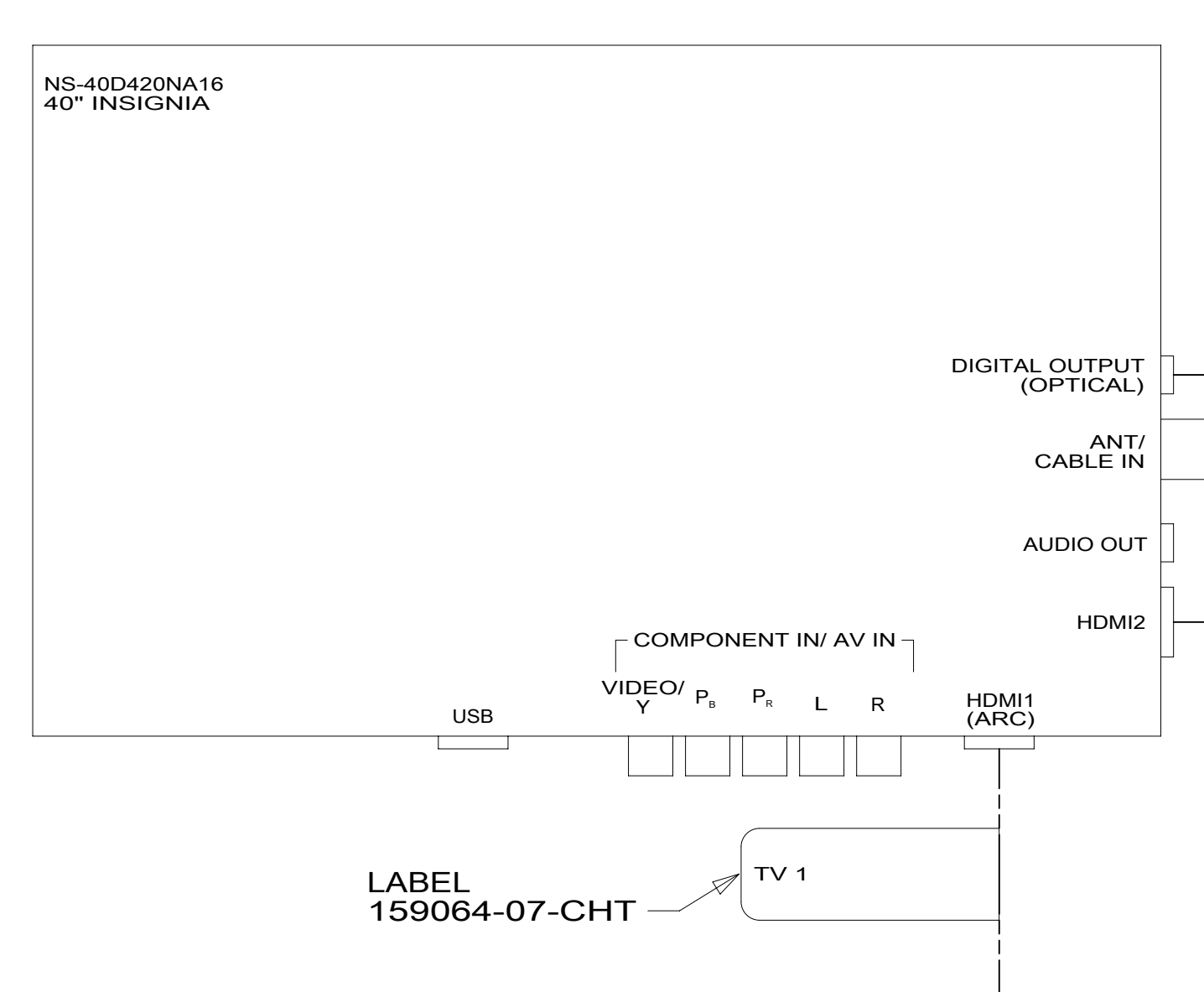
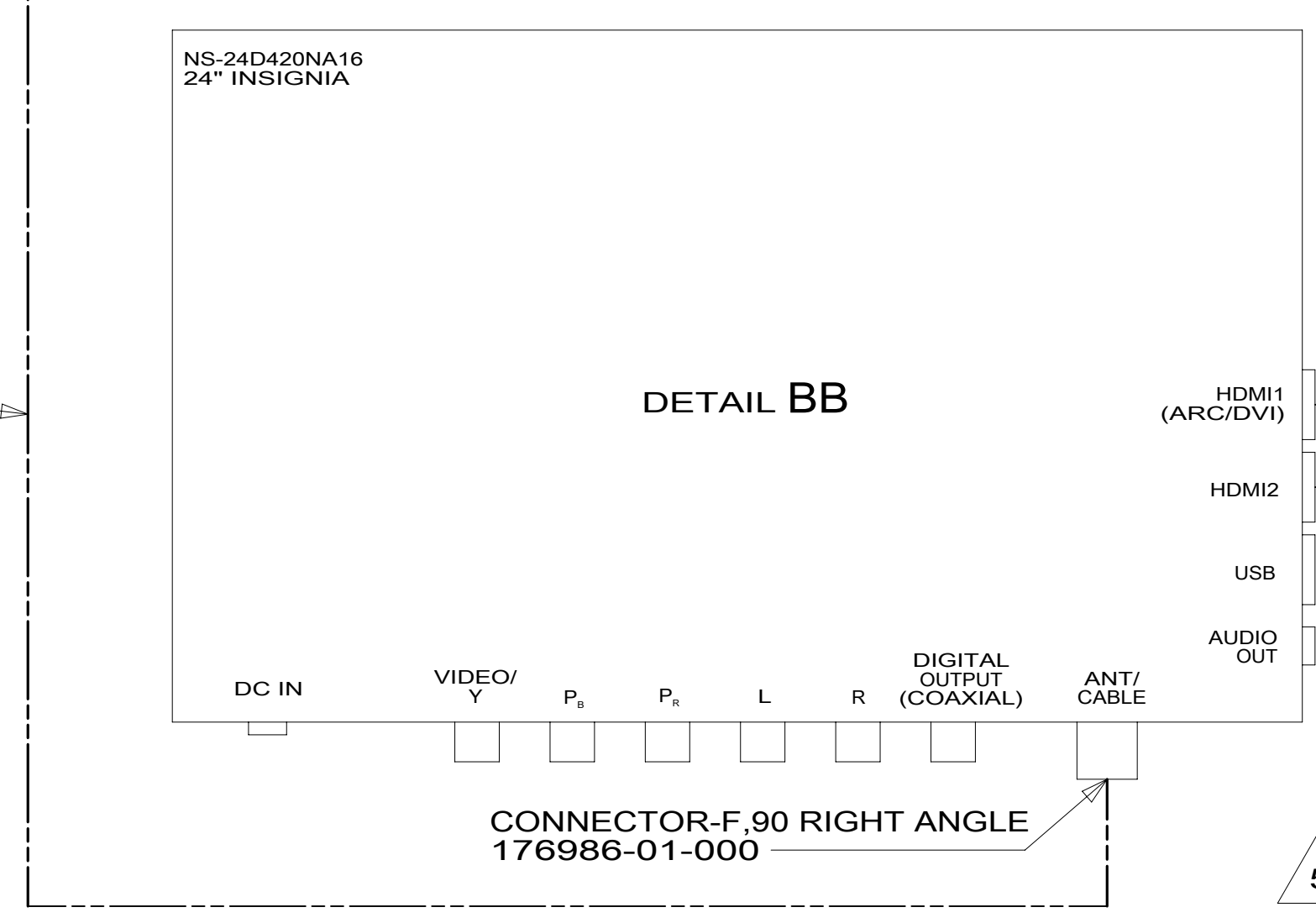
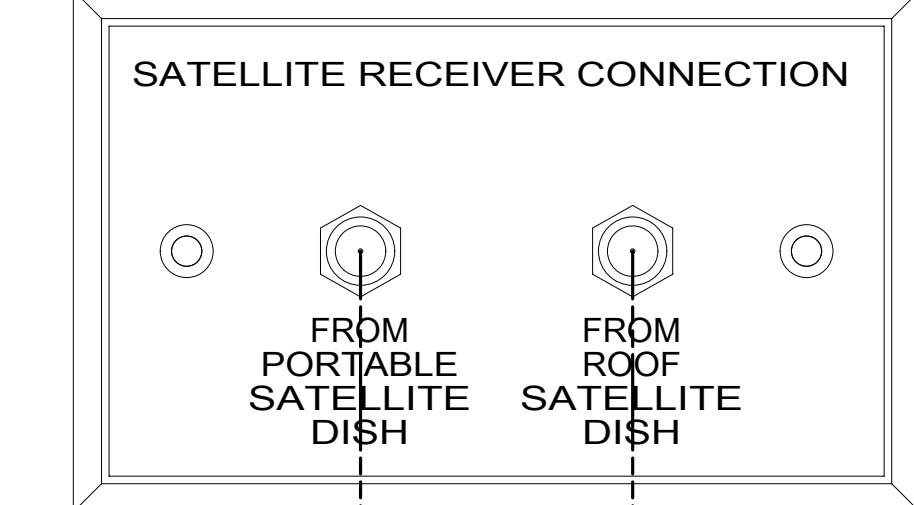
FOR ELECTRICAL CALLOUTS SEE DWG NO. 121339-01-000

3 SATELLITE PREP AREA

CABLE-HDMI 165308-03-000

SPLITTER-HDMI, 1X2 192138-01

CONNECTOR-F.90 RIGHT ANGLE 176986-01-000



5 CABLE ASM-COAX (BLU) (IN ROOF)

5 CABLE ASM-COAX (RED)

SPLITTER 86756-02-000 SCREW G11-08-12B (2)

CABLE ASM-COAX 87105-01-003 (UNMARKED)

CABLE ASM-COAX (YEL)

CABLE-HDMI 165308-03-000

LABEL 159064-07-CHT

DVD PLAYER

SPLITTER-HDMI, 1X2 192138-01

FROM WIRE ASM-ROOF

CABLE-OPTICAL AUDIO 187116-02-000

CABLE ASM-COAX, BRN 087105-09-015

WIRE ASM-JUMPER 153349-06-000

TO EXT TV

HDMI1 (ARC/DVI)

HDMI2

USB

AUDIO OUT

DC IN

VIDEO/Y

P

L

R

DIGITAL OUTPUT (COAXIAL)

ANT/CABLE

HDMI2

AUDIO OUT

DC IN

VIDEO/Y

P

L

R

DIGITAL OUTPUT (COAXIAL)

ANT/CABLE

HDMI2

AUDIO OUT

DC IN

VIDEO/Y

P

L

R

DIGITAL OUTPUT (COAXIAL)

ANT/CABLE

HDMI2

AUDIO OUT

DC IN

VIDEO/Y

P

L

R

DIGITAL OUTPUT (COAXIAL)

ANT/CABLE

HDMI2

AUDIO OUT

DC IN

VIDEO/Y

P

L

R

DIGITAL OUTPUT (COAXIAL)

ANT/CABLE

HDMI2

AUDIO OUT

DC IN

VIDEO/Y

P

L

R

DIGITAL OUTPUT (COAXIAL)

ANT/CABLE

HDMI2

AUDIO OUT

DC IN

VIDEO/Y

P

L

R

DIGITAL OUTPUT (COAXIAL)

ANT/CABLE

HDMI2

AUDIO OUT

DC IN

VIDEO/Y

P

L

R

DIGITAL OUTPUT (COAXIAL)

ANT/CABLE

HDMI2

AUDIO OUT

DC IN

VIDEO/Y

P

L

R

DIGITAL OUTPUT (COAXIAL)

ANT/CABLE

HDMI2

AUDIO OUT

DC IN

VIDEO/Y

P

L

R

DIGITAL OUTPUT (COAXIAL)

ANT/CABLE

HDMI2

AUDIO OUT

DC IN

VIDEO/Y

P

L

R

DIGITAL OUTPUT (COAXIAL)

ANT/CABLE

HDMI2

AUDIO OUT

DC IN

VIDEO/Y

P

L

R

DIGITAL OUTPUT (COAXIAL)

ANT/CABLE

HDMI2

AUDIO OUT

DC IN

VIDEO/Y

P

L

R

DIGITAL OUTPUT (COAXIAL)

ANT/CABLE

HDMI2

AUDIO OUT

DC IN

VIDEO/Y

P

L

R

DIGITAL OUTPUT (COAXIAL)

ANT/CABLE

HDMI2

AUDIO OUT

DC IN

VIDEO/Y

P

L

R

DIGITAL OUTPUT (COAXIAL)

ANT/CABLE

HDMI2

AUDIO OUT

DC IN

VIDEO/Y

P

L

R

DIGITAL OUTPUT (COAXIAL)

ANT/CABLE

HDMI2

AUDIO OUT

DC IN

VIDEO/Y

P

L

R

DIGITAL OUTPUT (COAXIAL)

ANT/CABLE

HDMI2

AUDIO OUT

DC IN

VIDEO/Y

P

L

R

DIGITAL OUTPUT (COAXIAL)

ANT/CABLE

HDMI2

AUDIO OUT

DC IN

VIDEO/Y

P

L

R

DIGITAL OUTPUT (COAXIAL)

ANT/CABLE

HDMI2

AUDIO OUT

DC IN

VIDEO/Y

P

L

R

DIGITAL OUTPUT (COAXIAL)

ANT/CABLE

HDMI2

AUDIO OUT

DC IN

VIDEO/Y

P

L

R

DIGITAL OUTPUT (COAXIAL)

ANT/CABLE

HDMI2

AUDIO OUT

DC IN

VIDEO/Y

P

L

R

DIGITAL OUTPUT (COAXIAL)

ANT/CABLE

HDMI2

AUDIO OUT

DC IN

VIDEO/Y

P

L

R

DIGITAL OUTPUT (COAXIAL)

ANT/CABLE

HDMI2

AUDIO OUT

DC IN

VIDEO/Y

P

L

R

DIGITAL OUTPUT (COAXIAL)

ANT/CABLE

HDMI2

AUDIO OUT

DC IN

VIDEO/Y

P

L

R

DIGITAL OUTPUT (COAXIAL)

ANT/CABLE

HDMI2

AUDIO OUT

DC IN

VIDEO/Y

P

L

R

DIGITAL OUTPUT (COAXIAL)

ANT/CABLE

HDMI2

AUDIO OUT

DC IN

VIDEO/Y

P

L

R

DIGITAL OUTPUT (COAXIAL)

ANT/CABLE

HDMI2

AUDIO OUT

DC IN

VIDEO/Y

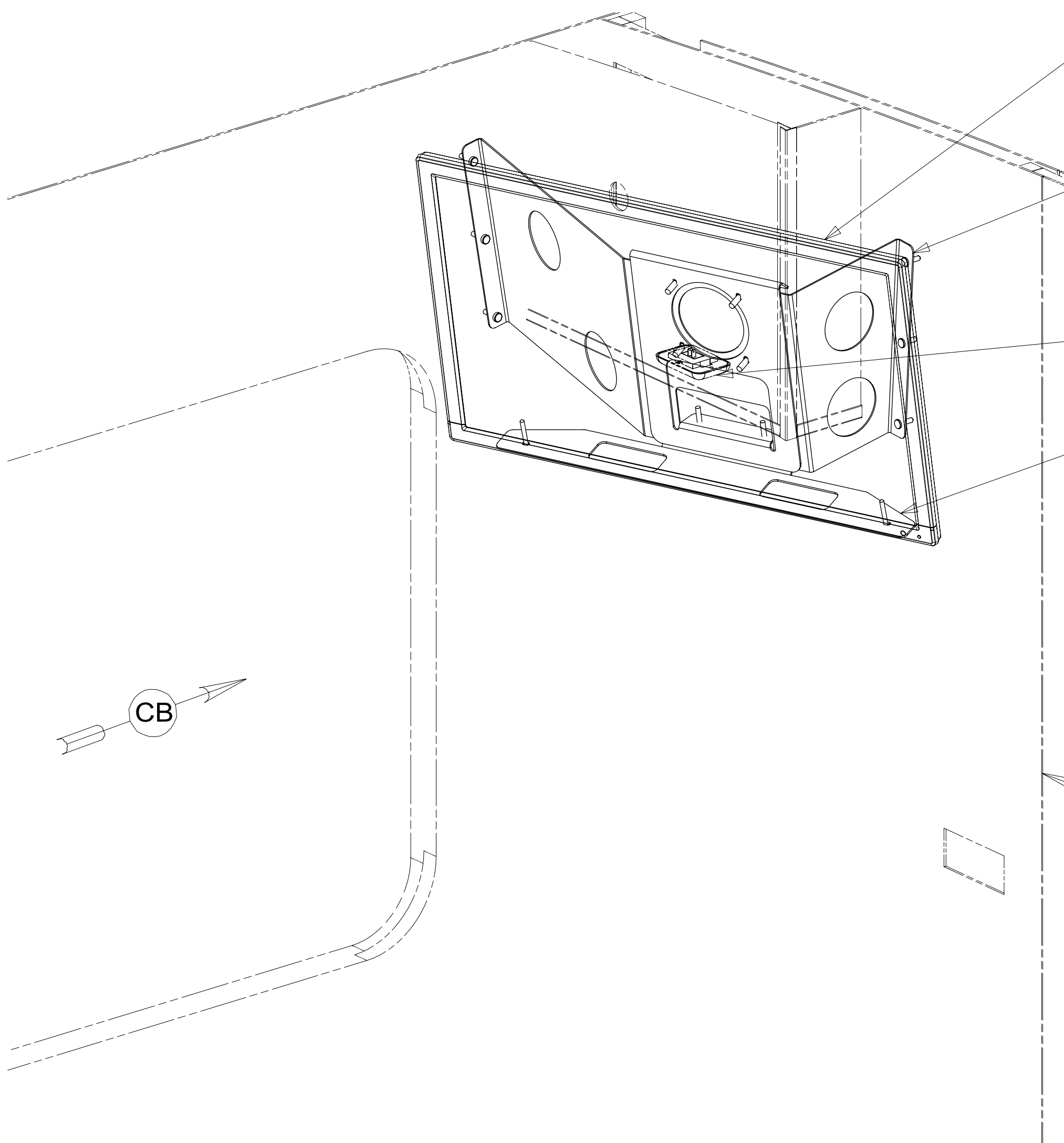
P

L

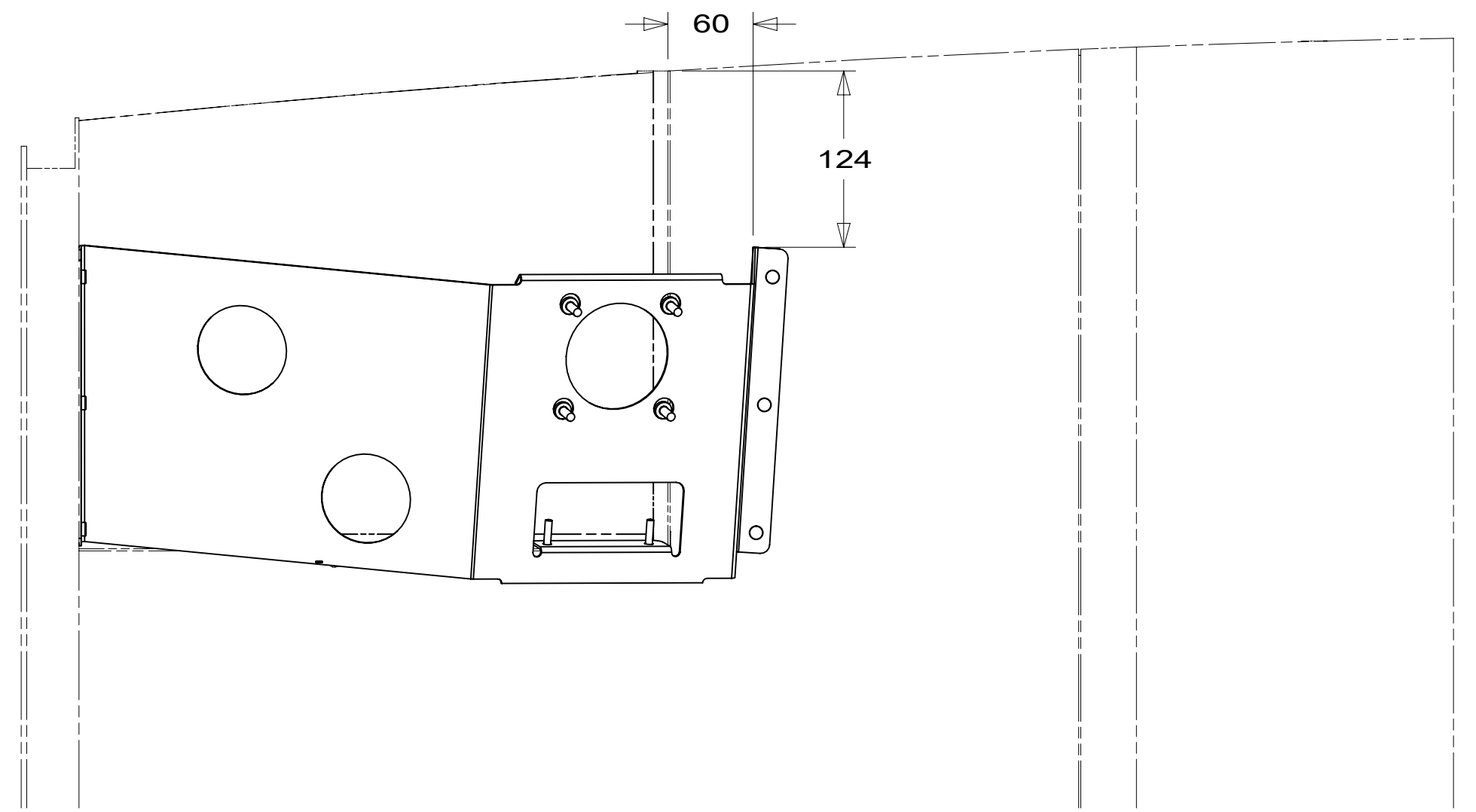
R

DIGITAL OUTPUT (COAXIAL)

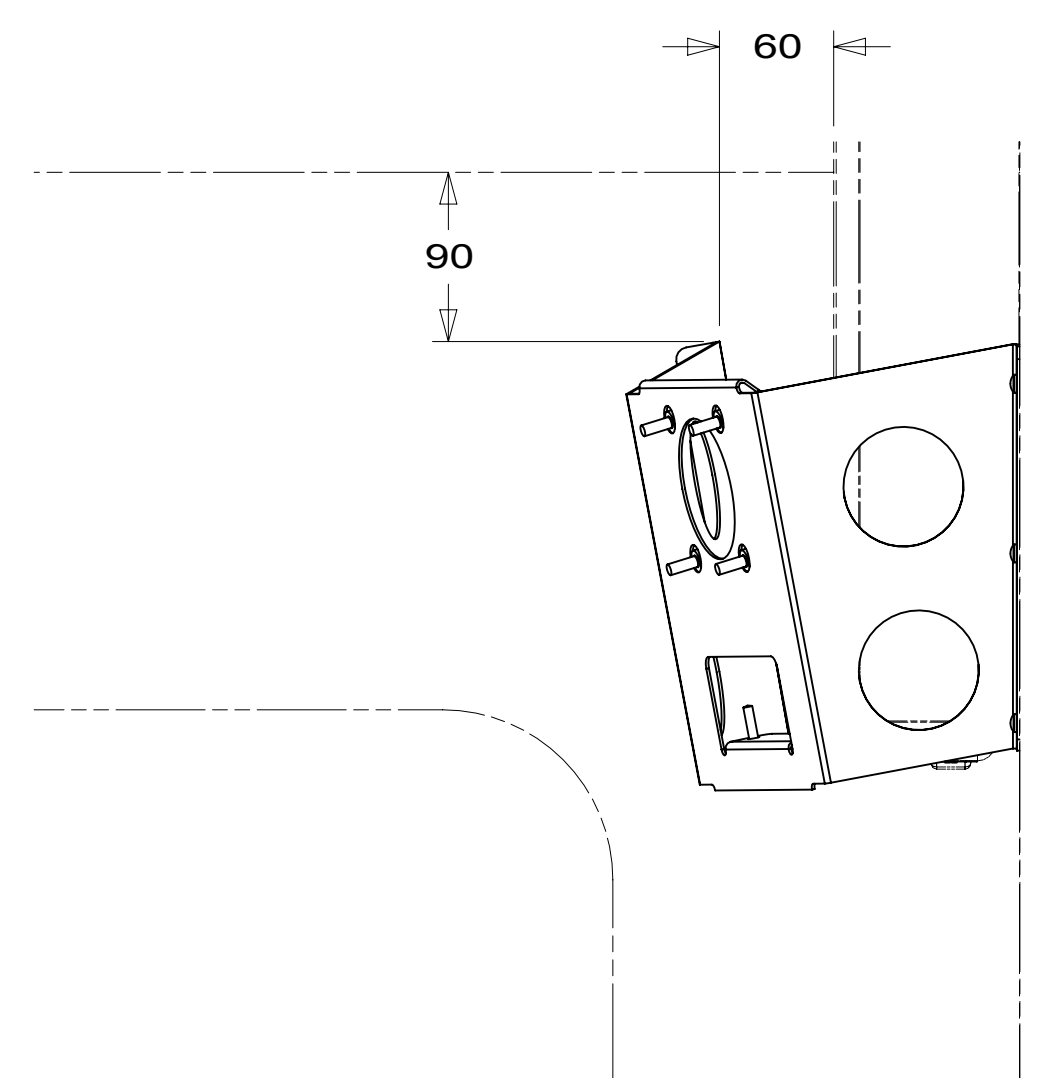
8 7 6 5 4 3 2 1



- TV-24", FLAT  
PANEL DLED, HDTV  
194363-01-000  
CORD-POWER, 12VDC  
191991-01-000  
DETAIL BB
- BRACKET-TV  
158394-24-CHT  
SCREW  
000G67-10-12U (3)  
000G39-10-12U (3)
- TV SWITCH  
(REF)
- PLATE-MOUNTING  
163321-10-CHT  
SCREW  
0MG02U-06-016 (4)  
SCREW  
000G39-10-12U (2)  
SCREW  
000G11-08-20U (2)



VIEW CB



VIEW CC

D  
C  
B  
A

D  
C  
B  
A

- 68X TV - BEDROOM
- 265 CODES/STANDARDS-CSA/CMVSS
- 1B1 CODES/STANDARDS USA

FOR ELECTRICAL  
TORQUE  
SPECIFICATIONS  
SEE DWG NO.  
128783-01-000

FOR  
ELECTRICAL  
CALLOUTS  
SEE DWG NO.  
121339-01-000

DESCRIPTION:	1B1 265 68X	
<b>WIRING INSTL-TV/DVD</b>		
SHEET:	ITEM/PART NO:	REV
3 OF 3	000201038 / 30148601000	

8 7 6 5 4 3 2 1 02-Nov-2016