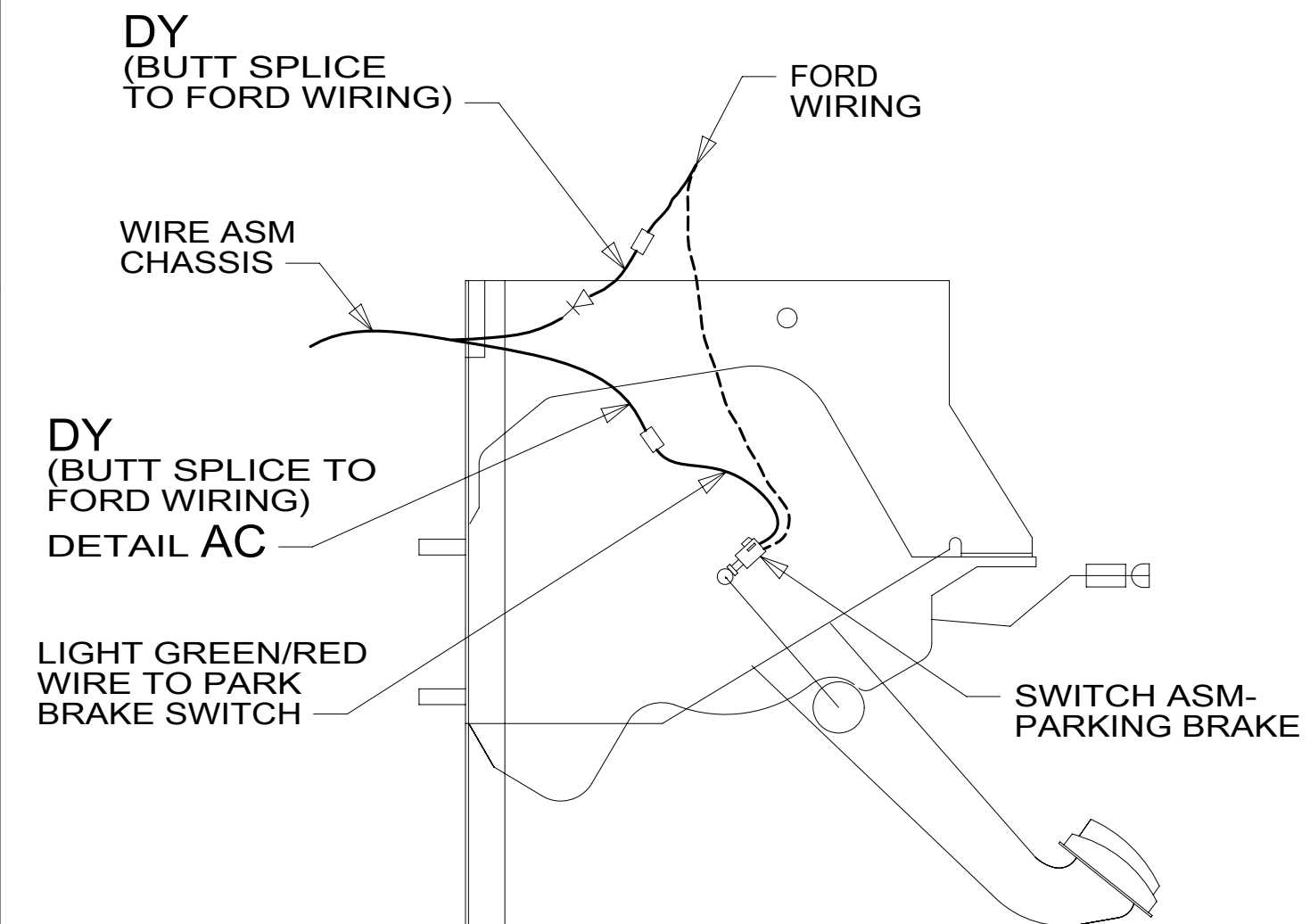


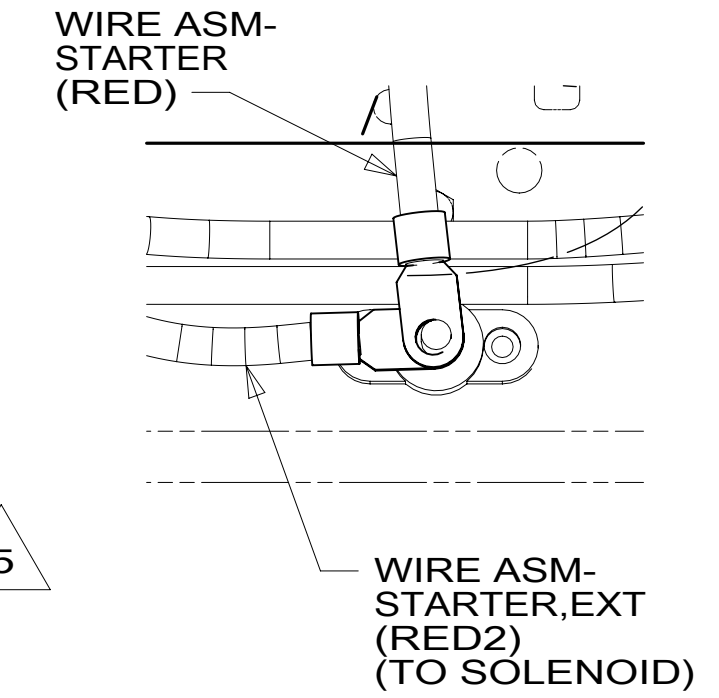
FUSE-7.5 AMP  
62901-03-000  
(POWER MIRRORS  
CIRCUITS WJ,MD)

B	A	B	A	B	A	B	A
35	28	21	14	7	B	A	
36	29	22	15	8			1
37	30	23	16	9			2
		24	17	10			3
39	32	25	18	11			4
40	33	26	19	12			5
41	34	27	20	13			6



DETAIL AA

DETAIL AB



DETAIL AD

- NOTES:**
- 6 WIRING IS PART OF WIRE ASM- POWER MIRRORS.
  - 5 SEE RADIO/MONITOR INSTL FOR ADDITIONAL INFORMAION.
  - 4 CUT WIRE AND RECONNECT AS SHOWN.
  - 3. USE WIRE TIES 8343-04-000 AND 116673-02-000 APPROXIMATELY 600MM ON CENTER UNLESS OTHERWISE SPECIFIED.
  - 2. SECURE CONDUIT 41953, TAB AS REQUIRED, OVER ALL WIRES IN CONTACT WITH SHARP EDGES.
  - 1 CUT LIGHT GREEN/RED WIRE FROM PARK BRAKE SWITCH AND RECONNECT TO CIRCUIT DY OF CHASSIS ASM AS SHOWN.

- 8 SEE SHEET 3 FOR ADDITIONAL INFORMATION.
- 7 WIRE ASM TO BE CONNECTED TO CHASSIS GROUND BAR BY STEP BOX.

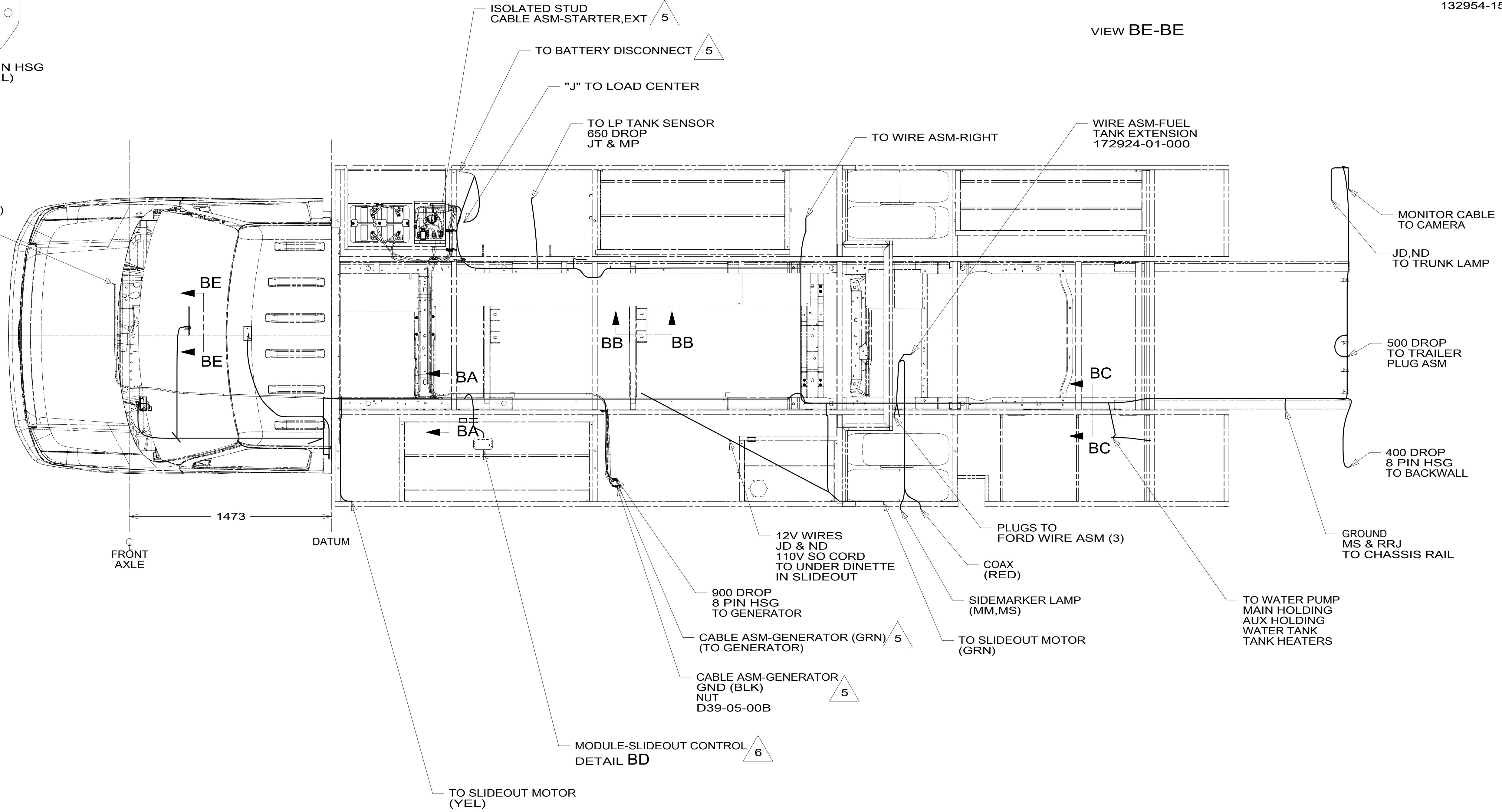
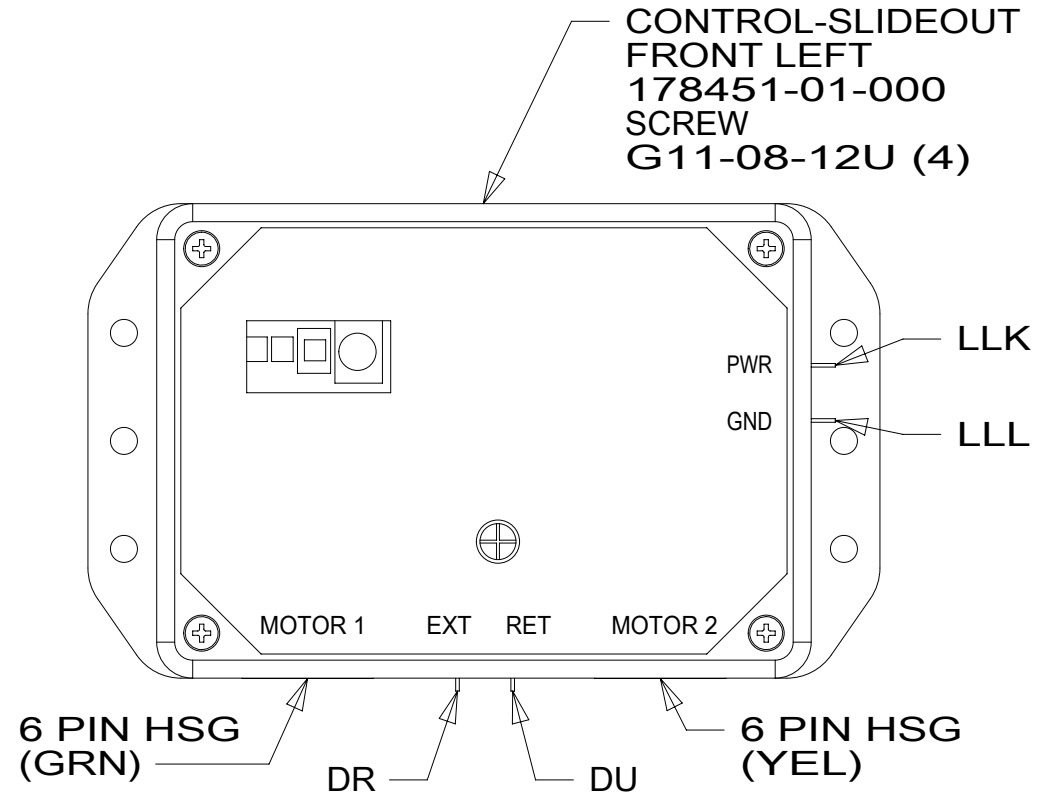
- 644 GREAT ALASKAN RENTAL PACKAGE
- 283 MIRRORS-UPGRADE W/CAMERA
- 965 SEAT PEDESTALS-SWIVEL/SLIDE
- 16Y FORD CHASSIS - 14,500#\_GVWR
- 265 CODES/STANDARDS-CSA/CMVSS
- 1B1 CODES/STANDARDS USA

**WINNEBAGO**  
COPYRIGHT 2016 WINNEBAGO INDUSTRIES, INC.

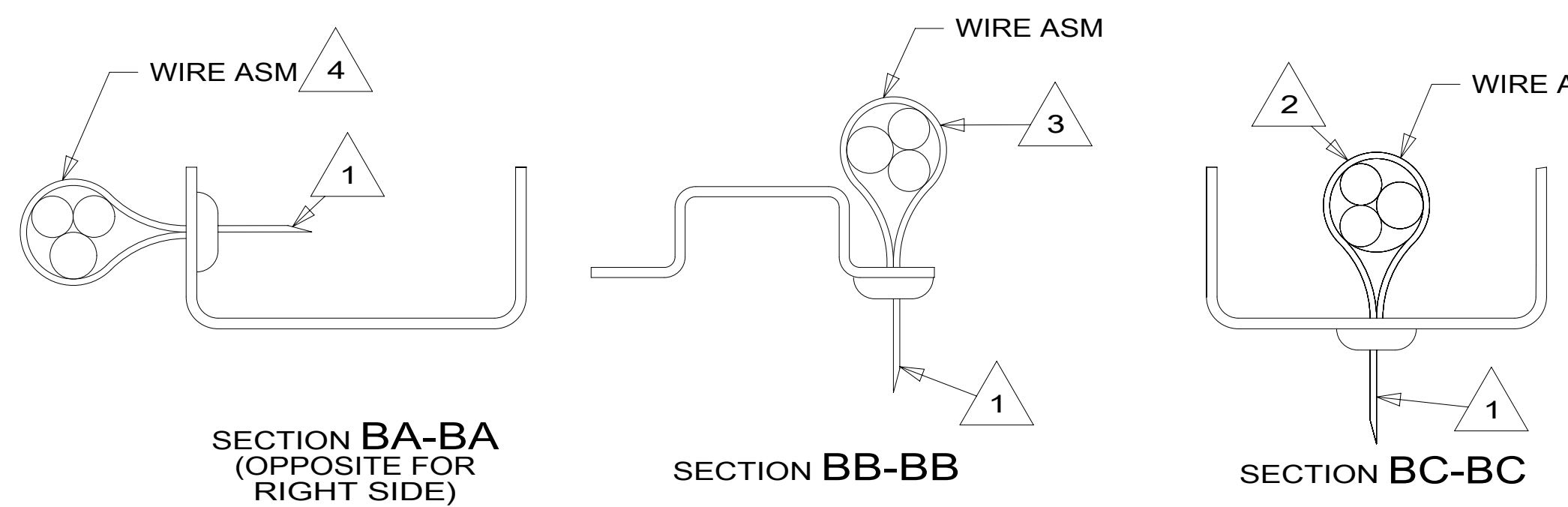
DSNR:		ALL DIMENSIONS ARE IN MILLIMETERS	
DIFFR:			
UNSPECIFIED TOLERANCES:		MATERIAL:	
WHOLE DIM (X)	3		
ONE-PLACE (X.X)	1.5		
TWO-PLACE (X.XX)	0.50		
ANGLE	1°		
REFER TO ES0018 FOR FASTENER TIGHTENING GUIDELINES		WEIGHT: (LBS)	FIRST USED:
DESCRIPTION: <b>WIRING INSTL-CHASSIS</b>			
SHEET: 1 OF 3	ITEM/PART NO: 000200795 / 30082401000	REV	

FOR ELECTRICAL TORQUE SPECIFICATIONS SEE DWG NO. 128783-01-000

FOR ELECTRICAL CALLOUTS SEE DWG NO. 121339-01-000



- NOTES:
- 6 MODULE TO BE ATTACHED TO UNDERSIDE OF FLOOR IN STORAGE COMPARTMENT.
  - 5 SEE BATTERY INSTL FOR ADDITIONAL INFORMATION.
  - 4 WIRES TO BE TIED TO CROSS MEMBER USING EXISTING HOLES.
  - 3 WIRES TO BE TIED TO TOP OF RAIL USING EXISTING HOLES.
  - 2 WIRES TO BE TIED TO INSIDE OF RAIL USING EXISTING HOLES.
  - 1 CUT OFF EXCESS END OF WIRE TIE.



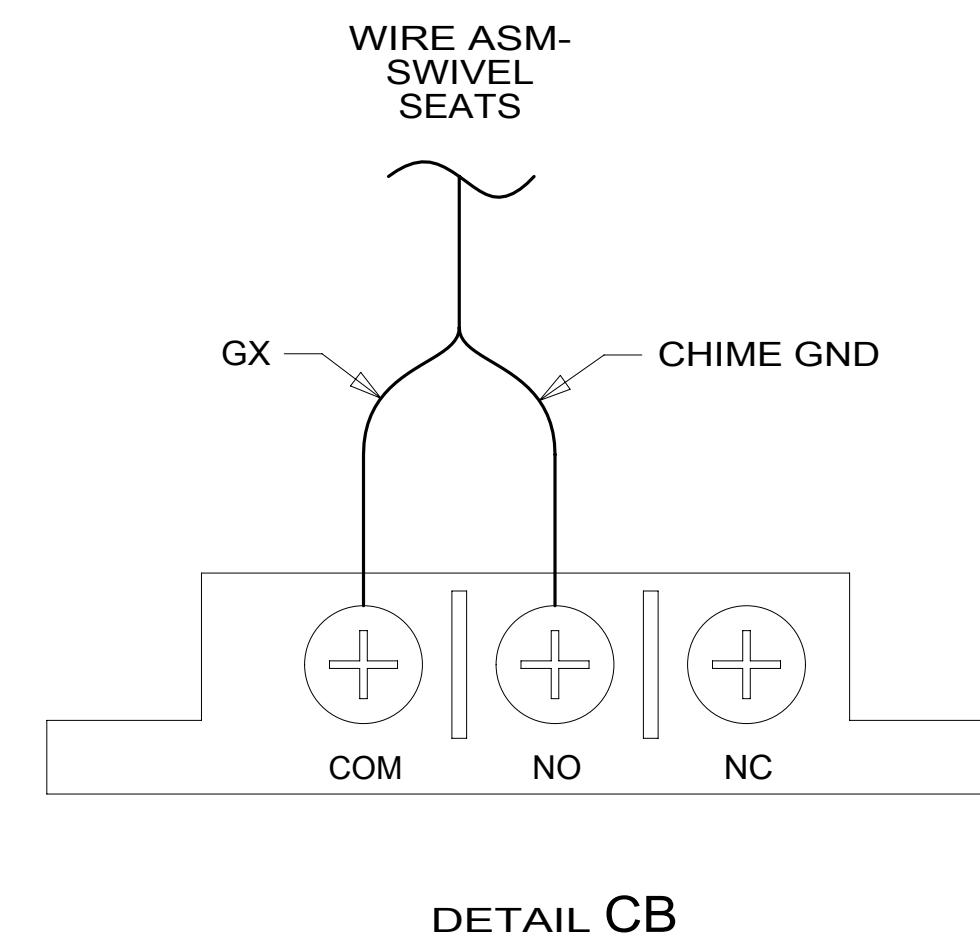
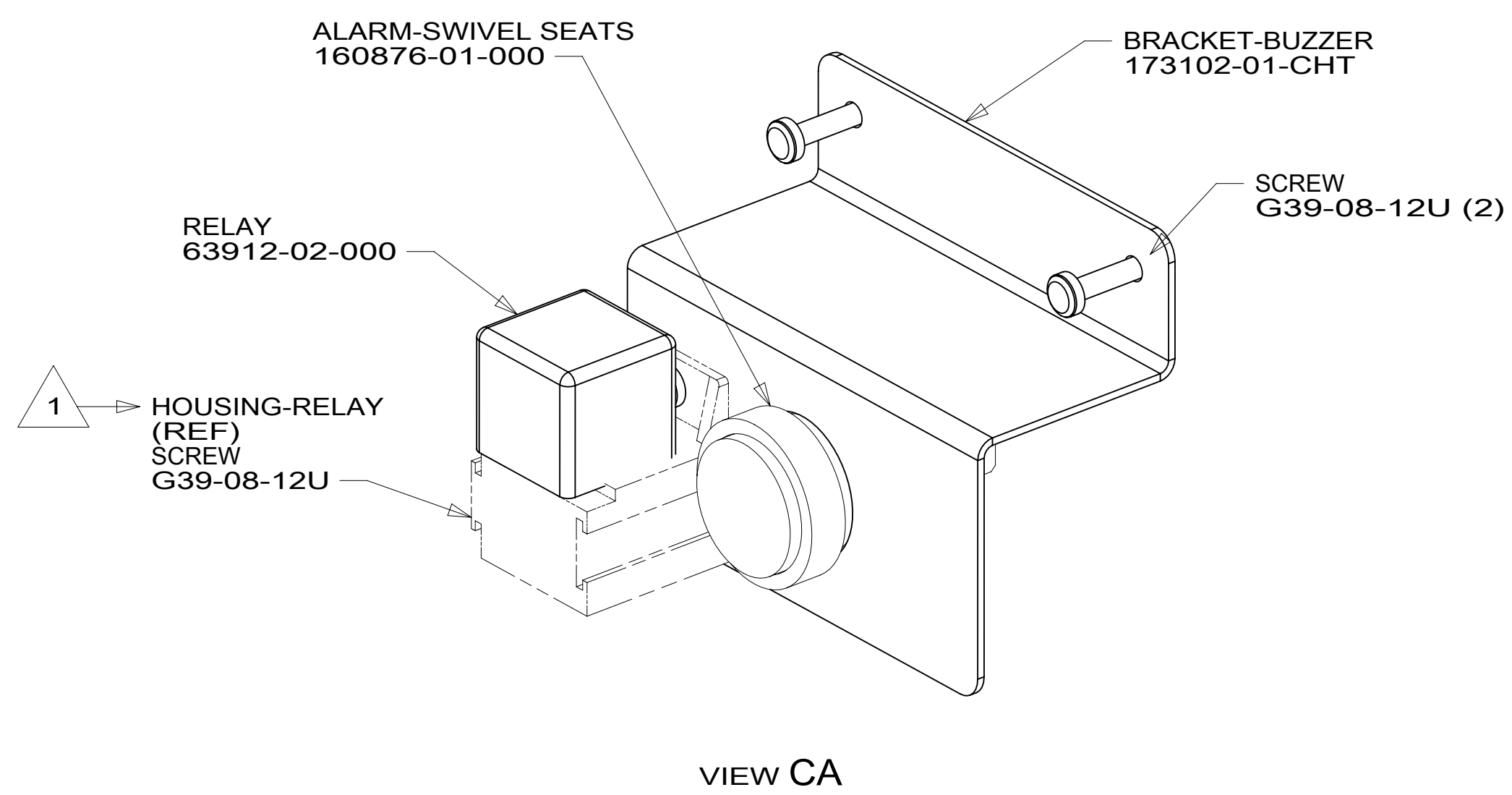
FOR ELECTRICAL TORQUE SPECIFICATIONS SEE DWG NO. 128783-01-000

FOR ELECTRICAL CALLOUTS SEE DWG NO. 121339-01-000

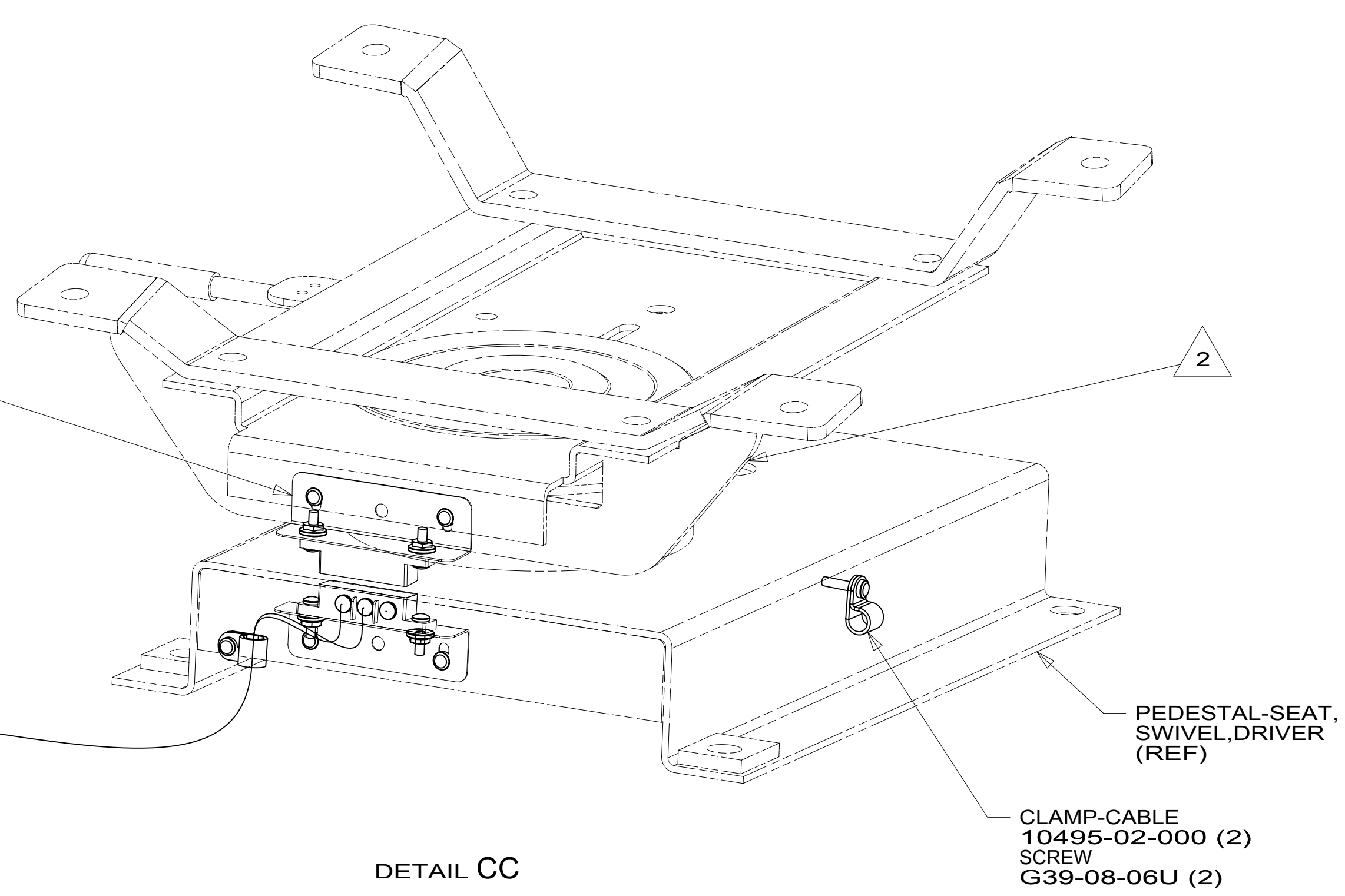
- 16Y FORD CHASSIS - 14,500#\_GVWR
- 265 CODES/STANDARDS-CSA/CMVSS
- 1B1 CODES/STANDARDS USA

DESCRIPTION: 1B1 265 16Y		
<b>WIRING INSTL-CHASSIS</b>		
SHEET: 2 OF 3	ITEM/PART NO: 000200795 / 30082401000	REV:

8 7 6 5 4 3 2 1

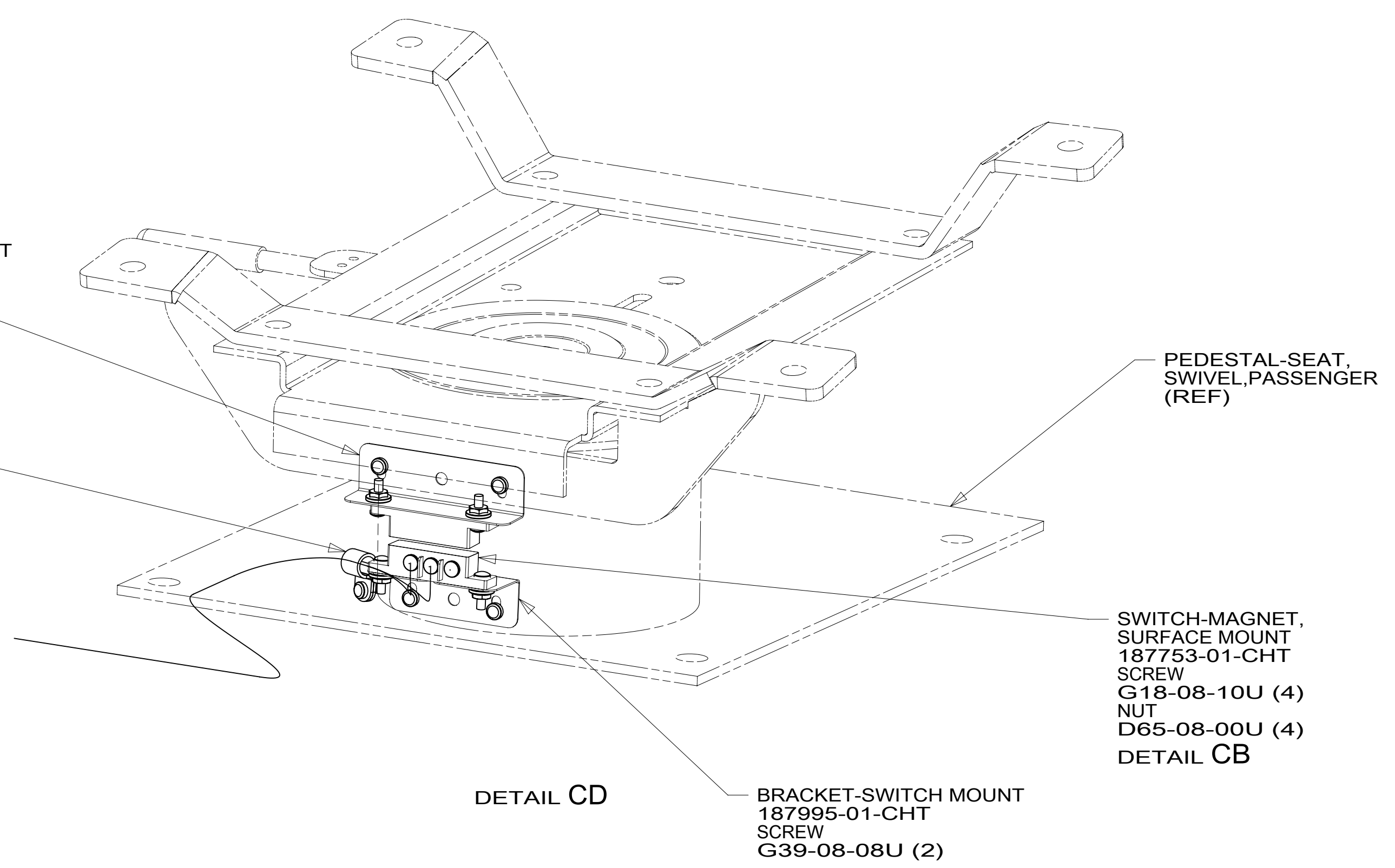


BRACKET-SWITCH MOUNT  
187994-01-CHT (2)  
SCREW  
G39-08-08U (4)  
SWITCH-MAGNET,  
SURFACE MOUNT  
187753-01-CHT  
SCREW  
G18-08-10U (4)  
NUT  
D65-08-00U (4)  
DETAIL CB



BRACKET-SWITCH MOUNT  
187994-01-CHT  
SCREW  
G39-08-08U (2)

CLAMP-CABLE  
10495-02-000  
SCREW  
G39-08-06U



2 COVER FORD WIRING WITH CONVOLUTE 41953-01-000 (150 MM) TO PROTECT WIRES FROM SHARP EDGES WHERE THEY PASS THROUGH SEAT PEDESTAL. SECURE BOTH ENDS TO WIRES WITH TAPE 8363-01-000.

1 PART OF WIRE ASM-CHASSIS.

NOTES:

FOR ELECTRICAL TORQUE SPECIFICATIONS SEE DWG NO. 128783-01-000

FOR ELECTRICAL CALLOUTS SEE DWG NO. 121339-01-000

- 965 SEAT PEDESTALS-SWIVEL/SLIDE
- 16Y FORD CHASSIS - 14,500#\_GVWR
- 265 CODES/STANDARDS-CSA/CMVSS
- 1B1 CODES/STANDARDS USA

DESCRIPTION:	1B1 265 16Y 965		
<b>WIRING INSTL-CHASSIS</b>			
SHEET:	ITEM/PART NO.:	REV:	
3 OF 3	000200795 / 30082401000		

8 7 6 5 4 3 2 1 20-Sep-2016