

283 644 5
 FUSE-7.5 AMP
 62901-03-000
 (POWER MIRRORS)
 (CIRCUITS WJ & MD)

B	A	B	A	B	A	B	A	B	A
35	28	21	14	7		B	A		
36	29	22	15	8			1		
37	30	23	16	9			2		
		24	17	10			3		
39	32	25	18	11			4		
40	33	26	19	12			5		
41	34	27	20	13			6		

644 283
 WIRE ASM-POWER
 MIRRORS
 188032-01-000

200 DROP
 DY, DY1
 TO PARK
 BRAKE SWITCH
 DETAIL AA

100 DROP
 MD
 POWER MIRROR
 WIRE ASM

644 283

DRIVER
 SEAT WIRING
 DETAIL CC

965 8
 WIRE ASM-
 SWIVEL SEATS
 178580-02-000

600 DROP
 KE, KE
 TO FORD
 FUSE PANEL
 DETAIL AB

283 6
 TO REAR VIEW
 MONITOR
 300 DROP
 2-PIN HSG
 3-PIN HSG

200 DROP
 TO BATTERY
 BOOST SWITCH

LAMP-DOME
 86280-01-000
 SCREW
 G67-10-12B (2)
 CONNECTOR
 58028-01-000(2)

ROUTE CABLE
 WITH EXISTING
 WIRE ASM TO CHASSIS
 STARTER SOLENOID

PASSENGER
 SEAT WIRING
 DETAIL CD

BATTERY INSTL
 192233-04-000

CLAMP
 010497-04-000 (2)

WIRE ASM-CHASSIS
 000006498 / 310370-01-000

1150 DROP
 4 & 15-PIN HSG
 RELAYS (2)
 8 PIN-HSG
 CIRCUITS PM, NM, HR.

TO WIRE ASM-RIGHT

TO GROUND BAR

TO FORD CHASSIS
 CONNECTIONS

GROMMET
 023942-01-000

TO WATER PUMP

JD, ND
 TO TRUNK LAMP

TO GENERATOR

GENERATOR GROUND
 TO CHASSIS RAIL

TO TRAILER HITCH ASM

TO BACKWALL ASM

TO MACERATOR
 PUMP SWITCH

JD, ND
 TO BDRM
 OVHD LAMP

TO REAR
 VIEW CAMERA

COAX CABLE (RED)
 TO CABLE INPUT

TO LP TANK SENSOR

TO BATH SWITCH

TO THERMOSTAT

110V HOUSING &
 JD & ND
 TO SLIDEOUT ROOM

TO SLIDEOUT RAM
 (YEL)

CLAMP
 010497-03-000 (2)

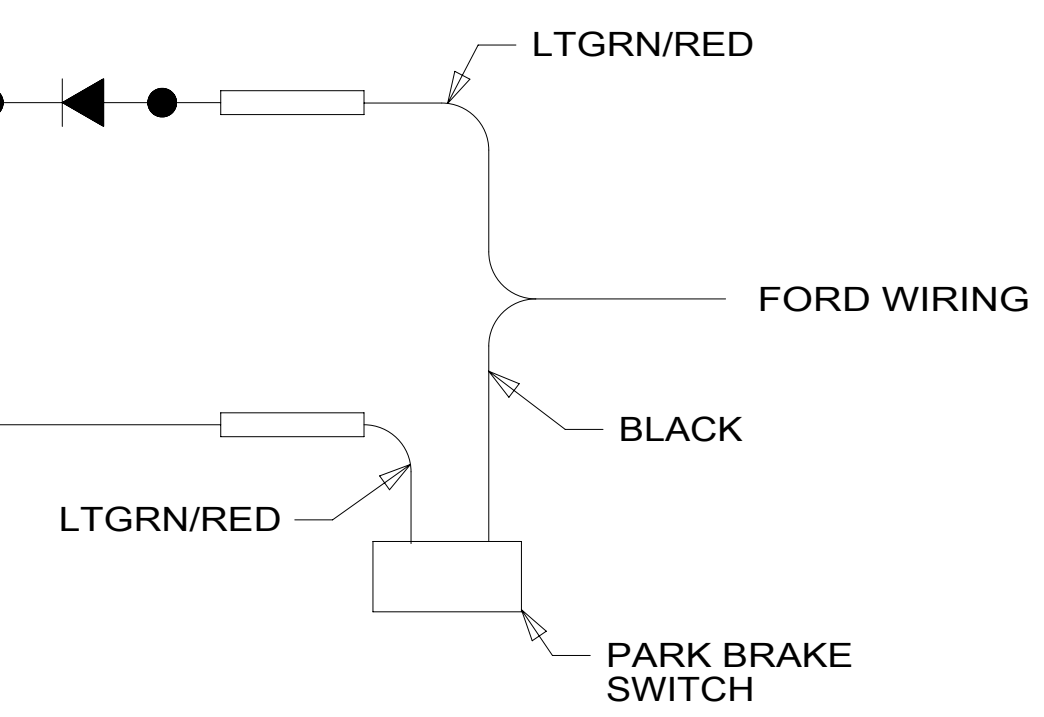
GROMMET
 023942-01-000 (2)

CONNECTIONS
 TO CHASSIS
 SUPPLIED WIRING

VIOLET

DETAIL AB

DETAIL AA



DETAIL AC 3

- 8 SEE SHEET 3 FOR ADDITIONAL INFORMATION.
- 7 COIL EXCESS CAMERA CABLE & 12V WIRES HERE FOR TRANSPORTATION PURPOSES.
- 6 SEE RADIO/MONITOR INSTL FOR ADDITIONAL INFORMATION.
- 5 WIRING IS PART OF WIRE ASM-POWER MIRRORS.
- 4 CUT WIRE AND RECONNECT AS SHOWN.
- 3 CUT LTGRN/RED WIRE FROM PARK BRAKE SWITCH AND RECONNECT TO CIRCUIT DY OF CHASSIS ASM AS SHOWN.

2. SECURE CONDUIT 41953, TAB AS REQUIRED, OVER ALL WIRES IN CONTACT WITH SHARP EDGES.
1. USE WIRE TIES 8343-04-000 AND 116673-01-000 APPROXIMATELY 600MM ON CENTER UNLESS OTHERWISE SPECIFIED.

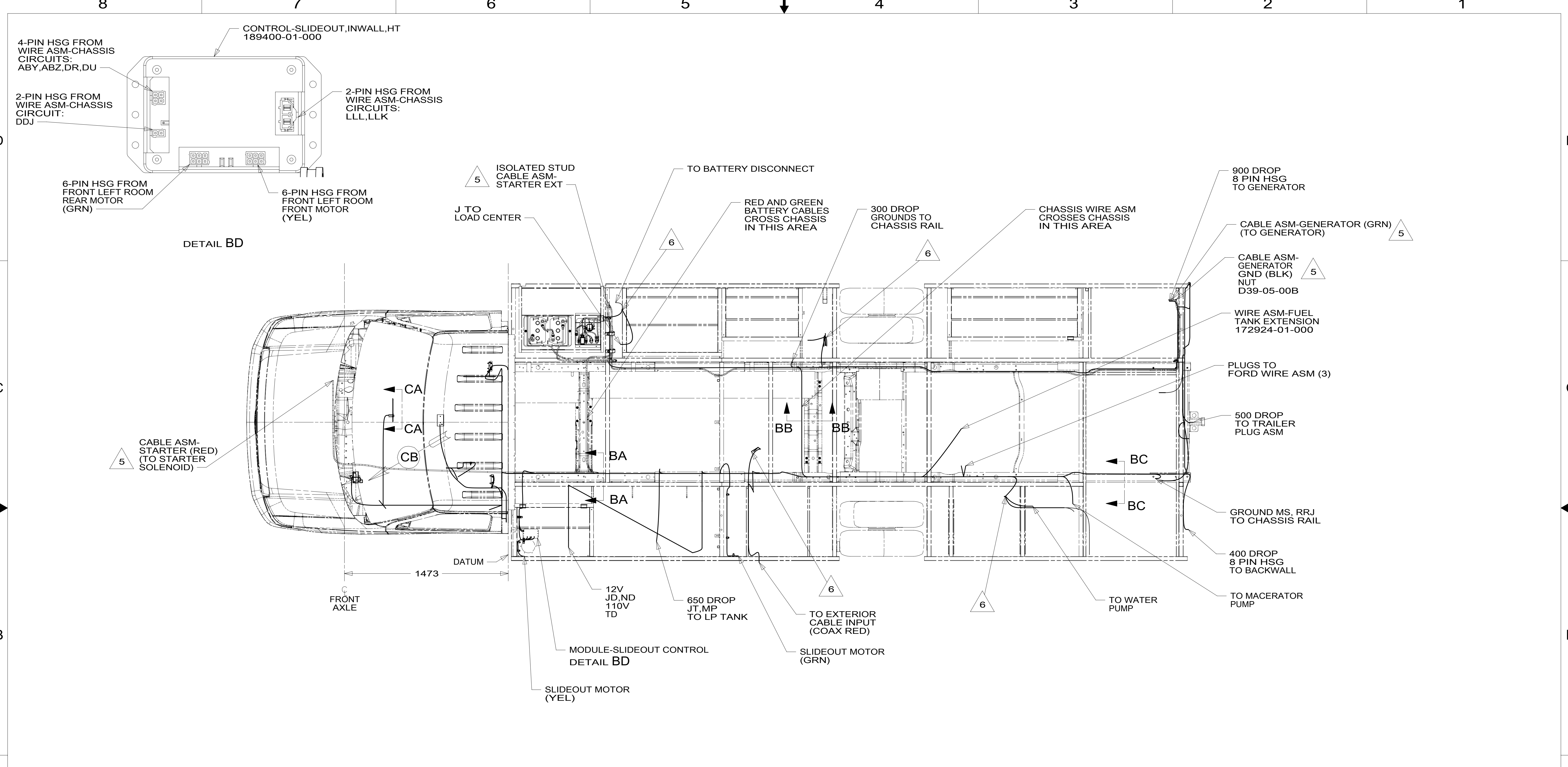
NOTES:

- 965 SEAT PEDESTALS-SWIVEL/SLIDE
- 644 GREAT ALASKAN RENTAL PACKAGE
- 283 MIRRORS-UPGRADE W/CAMERA
- 16Y FORD CHASSIS - 14,500#_GVWR
- 265 CODES/STANDARDS-CSA/CMVSS
- 1B1 CODES/STANDARDS USA

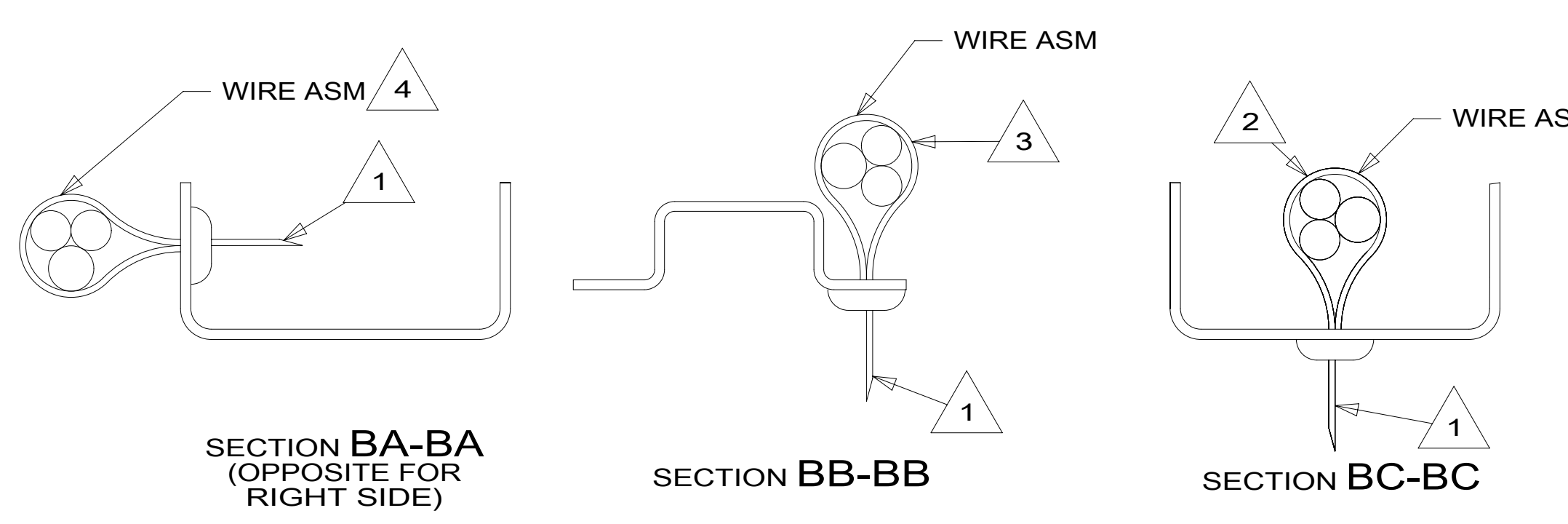
WINNEBAGO COPYRIGHT 2016 WINNEBAGO INDUSTRIES, INC.		ALL DIMENSIONS ARE IN MILLIMETERS
DSNR:		
DIFR:		
UNSPECIFIED TOLERANCES:		MATERIAL:
WHOLE DIM (X)	3	
ONE-PLACE (X.X)	1.5	
TWO-PLACE (X.XX)	0.50	
ANGLE	1°	
REFER TO ES0018 FOR FASTENER TIGHTENING GUIDELINES	WEIGHT: (LBS)	FIRST USED:
DESCRIPTION: WIRING INSTL-CHASSIS		
SHEET:	ITEM/PART NO:	REV
1 OF 3	000200788 / 30080801000	
		REF:
		1 20-Sep-2016

FOR ELECTRICAL
 TORQUE
 SPECIFICATIONS
 SEE DWG NO.
 128783-01-000

FOR ELECTRICAL
 CALLOUTS
 SEE DWG NO.
 121339-01-000



- NOTES:**
- 6 WIRING PASSES THROUGH FLOOR IN THIS AREA.
 - 5 SEE BATTERY INSTL FOR ADDITIONAL INFORMATION.
 - 4 WIRES TO BE TIED TO CROSS MEMBER USING EXISTING HOLES.
 - 3 WIRES TO BE TIED TO TOP OF RAIL USING EXISTING HOLES.
 - 2 WIRES TO BE TIED TO INSIDE OF RAIL USING EXISTING HOLES.
 - 1 CUT OFF EXCESS END OF WIRE TIE.



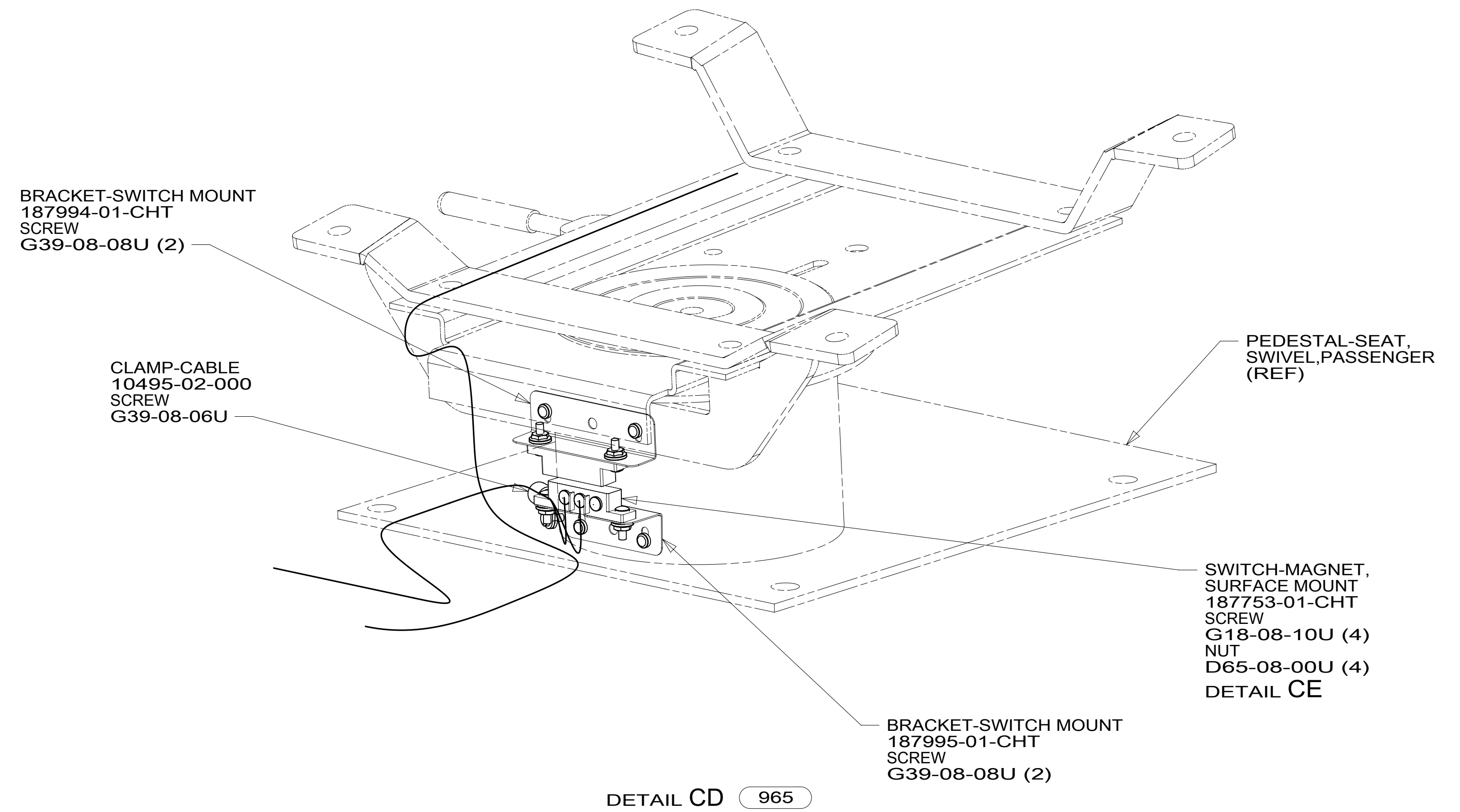
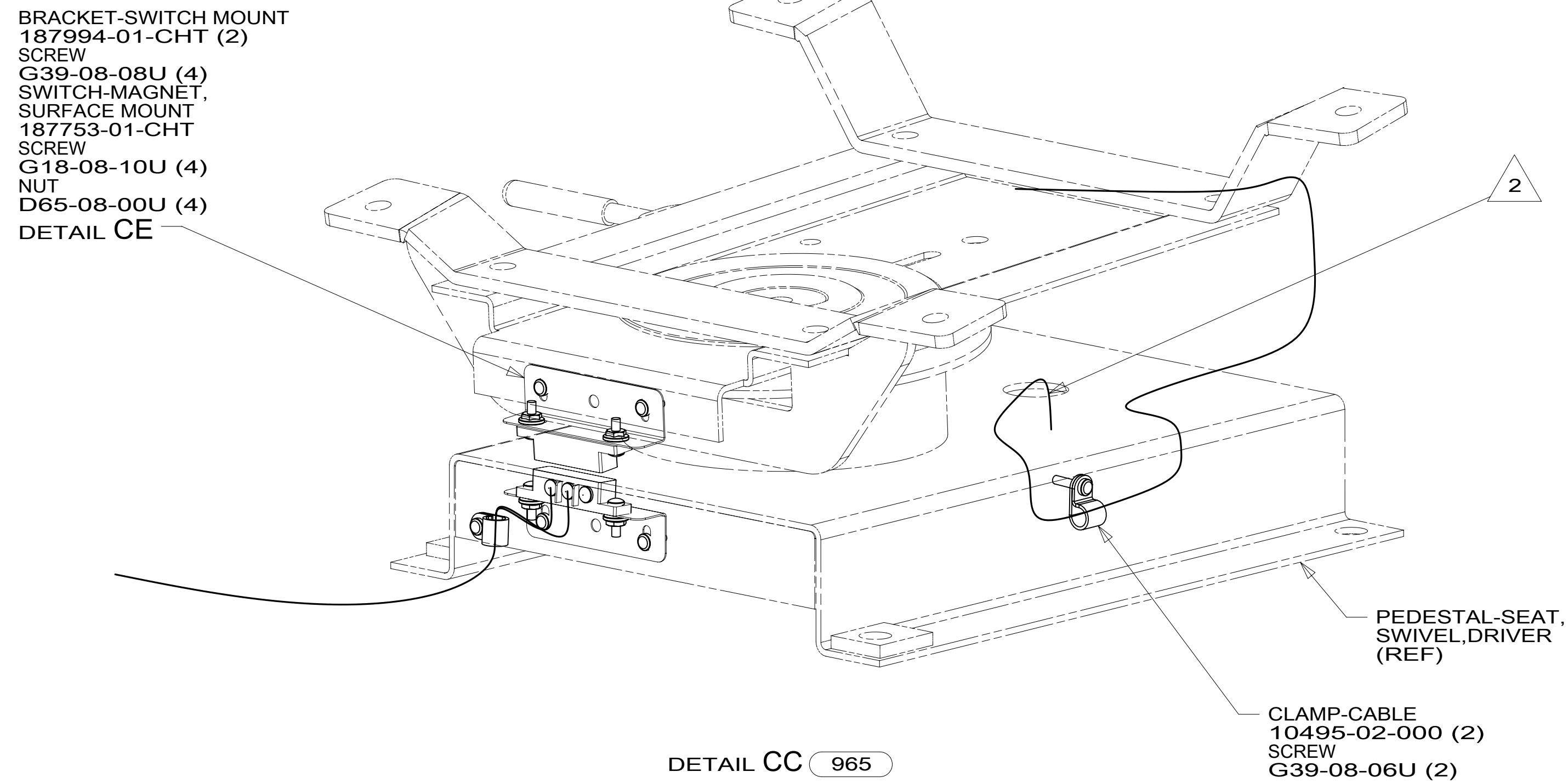
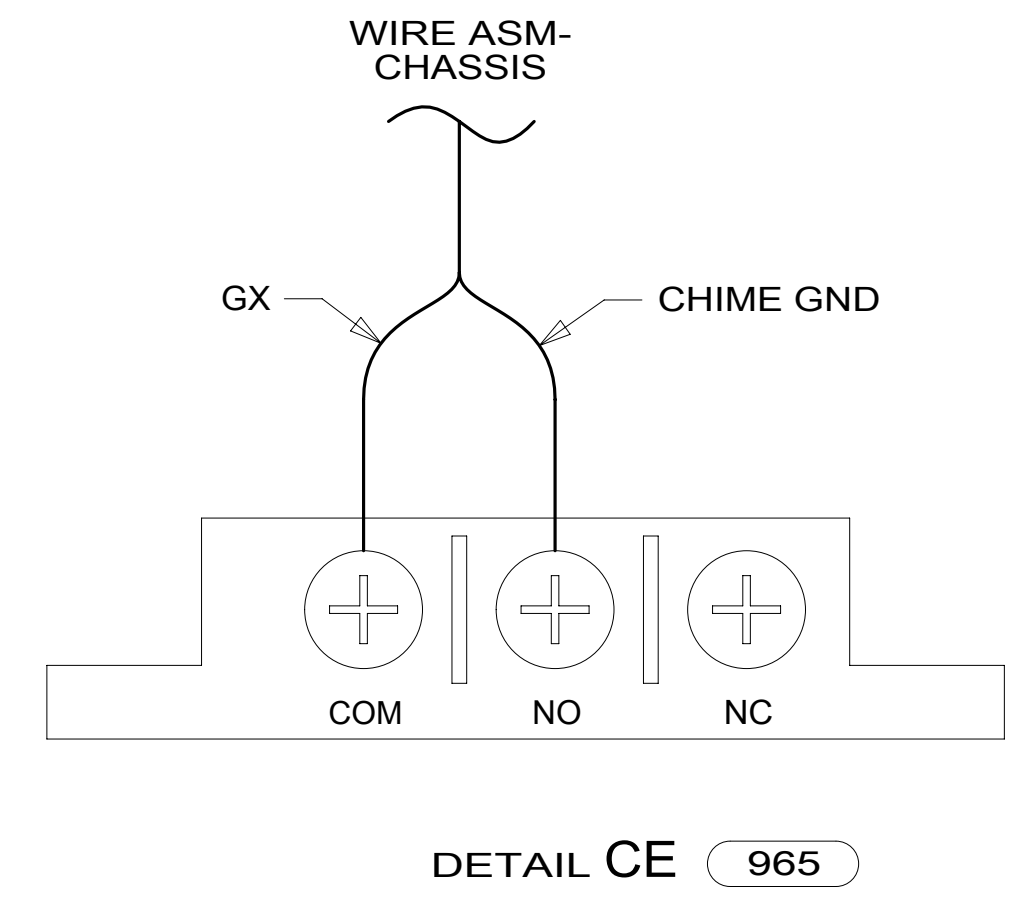
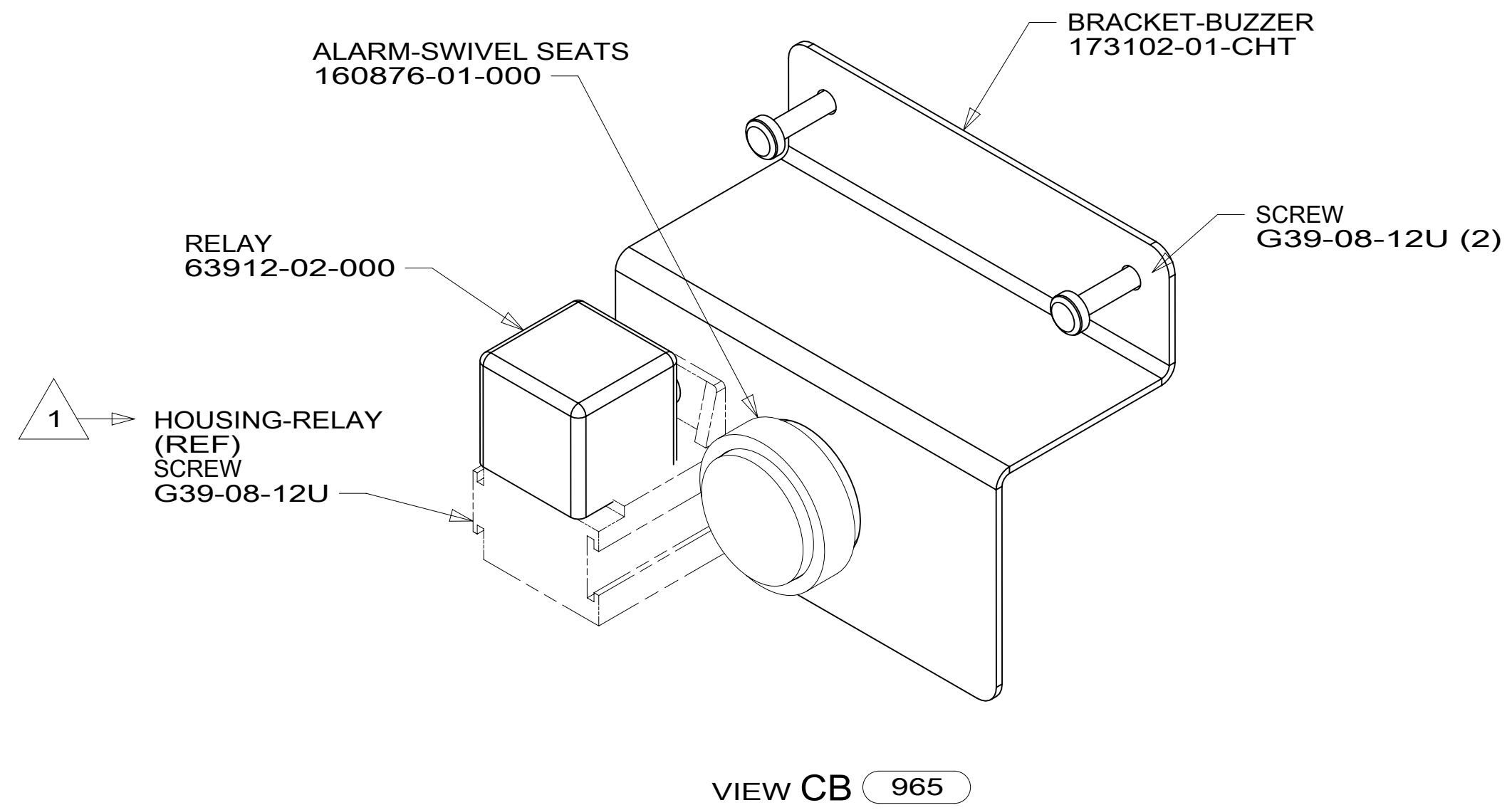
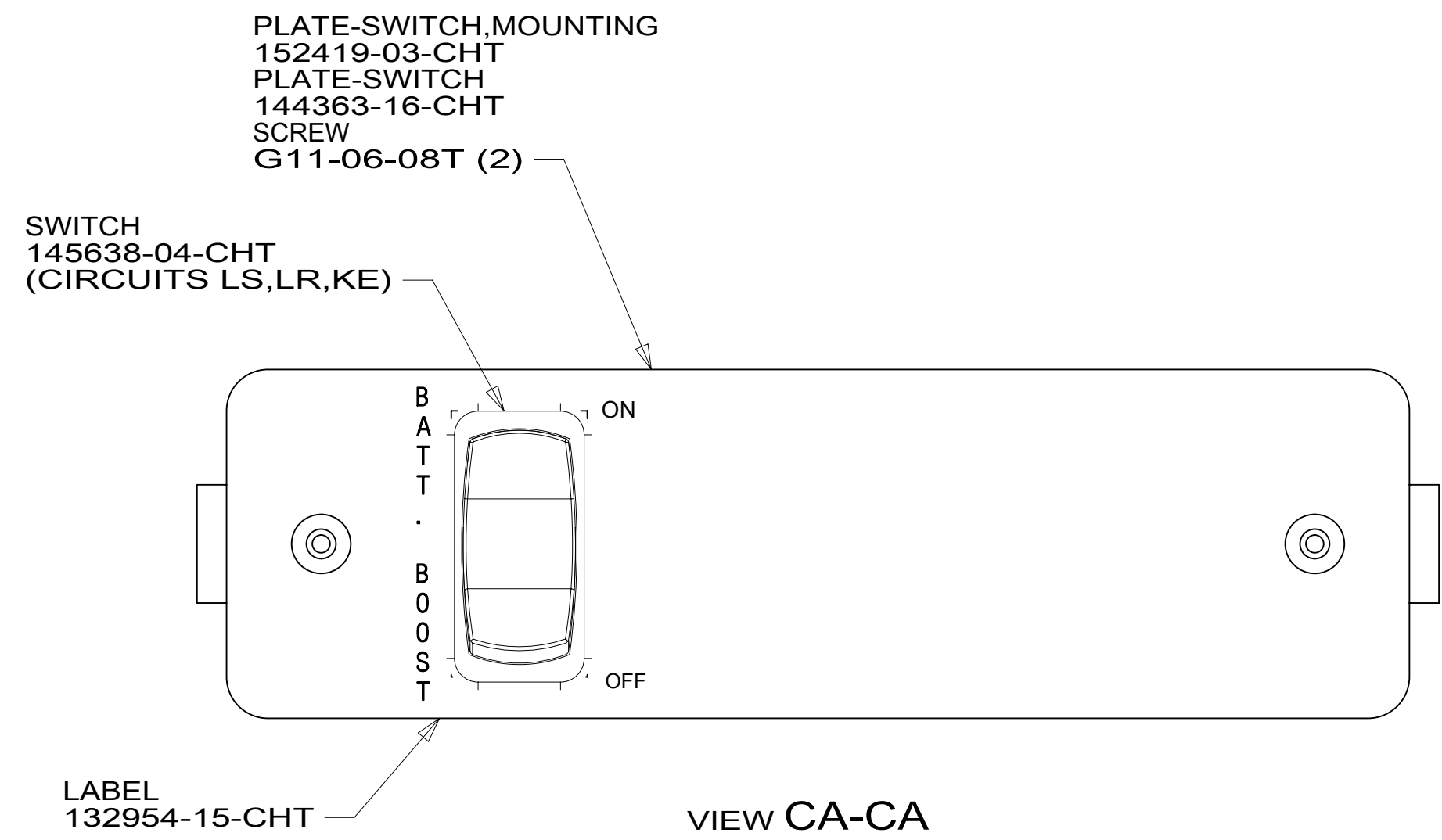
FOR ELECTRICAL TORQUE SPECIFICATIONS SEE DWG NO. 128783-01-000

FOR ELECTRICAL CALLOUTS SEE DWG NO. 121339-01-000

- 16Y FORD CHASSIS - 14,500#_GVWR
- 265 CODES/STANDARDS-CSA/CMVSS
- 1B1 CODES/STANDARDS USA

DESCRIPTION: WIRING INSTL-CHASSIS		
SHEET: 2 OF 3	ITEM/PART NO: 000200788 / 30080801000	REV

8 7 6 5 4 3 2 1



2 COVER WIRING WITH CONVOLUTE 41953-01-000 (150 MM) TO PROTECT WIRES FROM SHARP EDGES WHERE THEY PASS THROUGH SEAT PEDESTAL. SECURE BOTH ENDS TO WIRES WITH TAPE 8363-01-000.

1 PART OF WIRE ASM-CHASSIS.

NOTES:

FOR ELECTRICAL TORQUE SPECIFICATIONS SEE DWG NO. 128783-01-000

FOR ELECTRICAL CALLOUTS SEE DWG NO. 121339-01-000

- 965 SEAT PEDESTALS-SWIVEL/SLIDE
- 16Y FORD CHASSIS - 14,500#_GVWR
- 265 CODES/STANDARDS-CSA/CMVSS
- 1B1 CODES/STANDARDS USA

DESCRIPTION:	1B1 265 16Y	
WIRING INSTL-CHASSIS		
SHEET:	ITEM/PART NO:	REV:
3 OF 3	000200788 / 30080801000	

8 7 6 5 4 3 2 1 20-Sep-2016