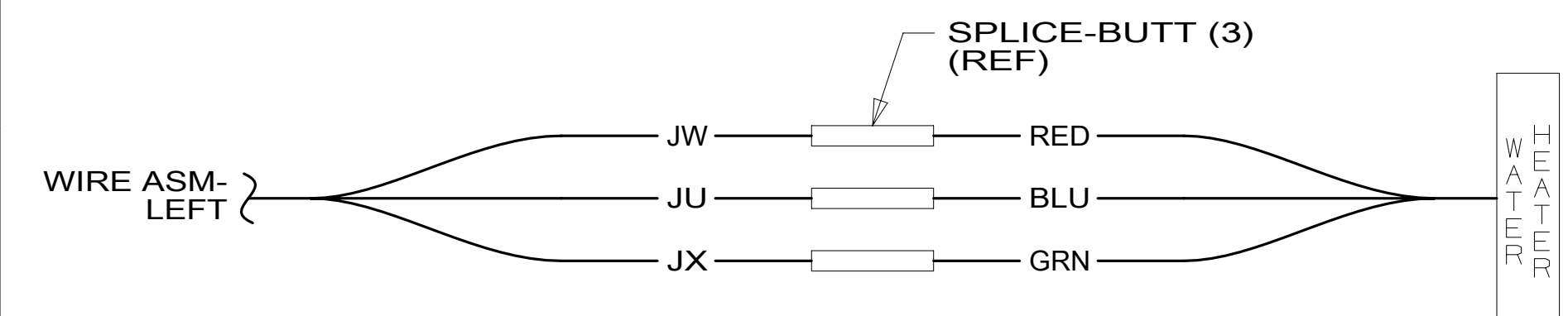
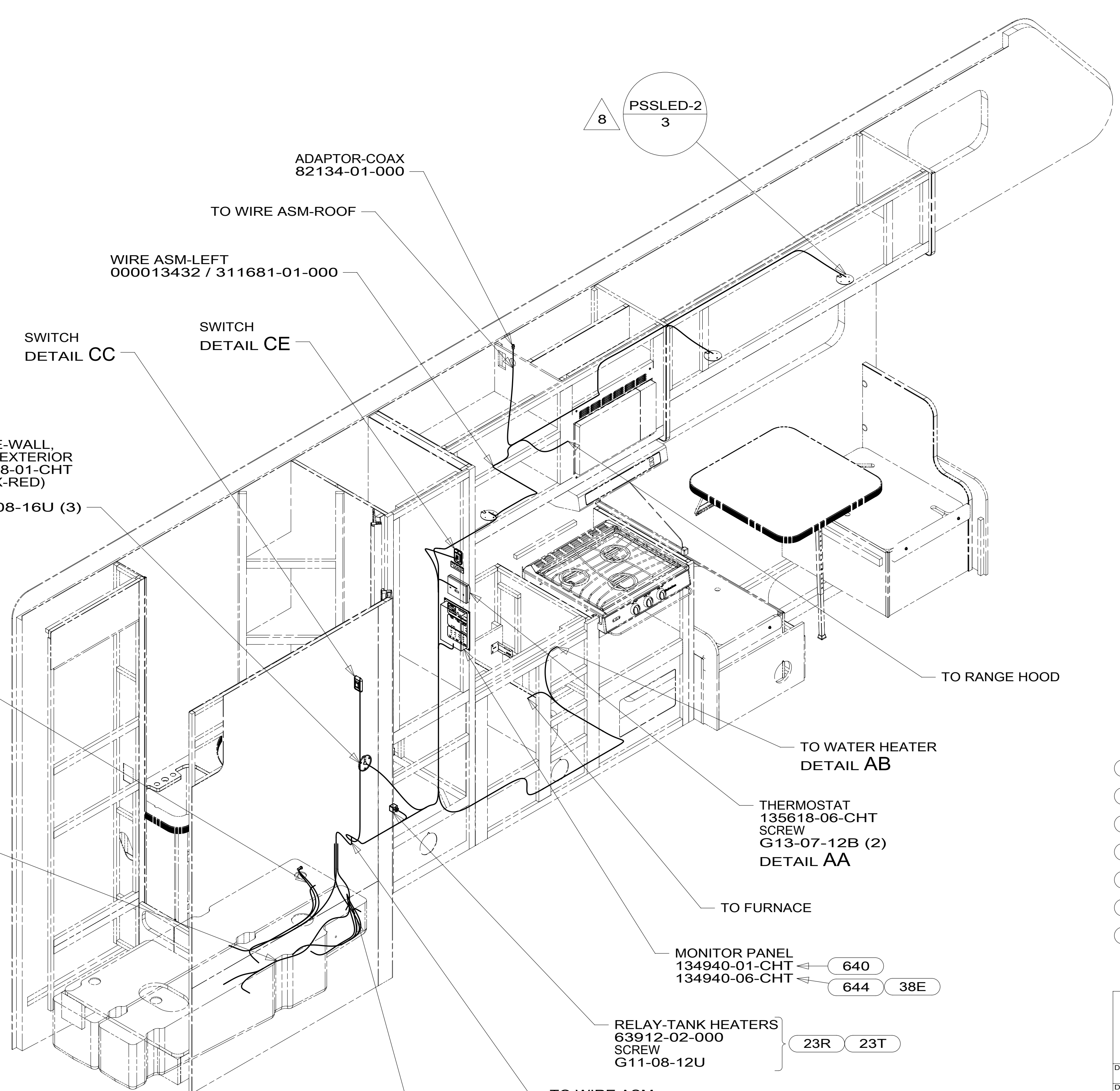


DETAIL AA



DETAIL AB



- 8 SWITCH ON LAMP TO BE ORIENTED TO REAR OF CABINET.
- 7 MARK WIRES WITH WRAP OF ORG TAPE.
- 6 CUT 2 PIN HSG OFF ASM, REPLACE WITH SPLICE-BUTT 031876-01-000 (2). CONNECT BLK WIRE TO WHT AND BLK/WHT WIRE TO YEL.
- 5 MARK WIRES WITH WRAP OF BLU TAPE.
- 4 SEE DETAIL EA FOR WIRING AND CONNECTION TO SENSOR PROBES.
- 3 SEE DRAINAGE SYSTEM INSTALLATION FOR ADDITIONAL INFORMATION.
- 2 WIRE ROUTED ALONG DRAINAGE PIPE AND CONNECTED TO PIPE WITH TIE-WIRE 8343-04-000.

1. AT MINIMUM ALL WIRES TO BE SUPPORTED AND SECURED PER CODE REQUIREMENTS. USE CLAMP 10495 OR 10497 OR WIRE TIE 8343 OR 108046 AND SCREW G67-XX-XXX OR G56-XX-XXX AS APPROPRIATE FOR INSTALLATION.

NOTES:

- 640 4 WIRE ASM-TANK AUX HOLDING 183744-03-000 (CONNECTS TO WIRE ASM-LEFT)
- 38E 644 6 7 WIRE ASM-TANKS, AUX HOLDING 151317-04-000
- 3 2 23T 23R WIRE ASM-HEATER, TANKS 183828-02-000 (CONNECTS TO WIRE ASM-LEFT)

- 4 640 WIRE ASM-TANK MAIN HOLDING 183744-02-000 (CONNECTS TO WIRE ASM-LEFT)
- 6 5 644 38E WIRE ASM-TANK MAIN HOLDING 151317-03-000

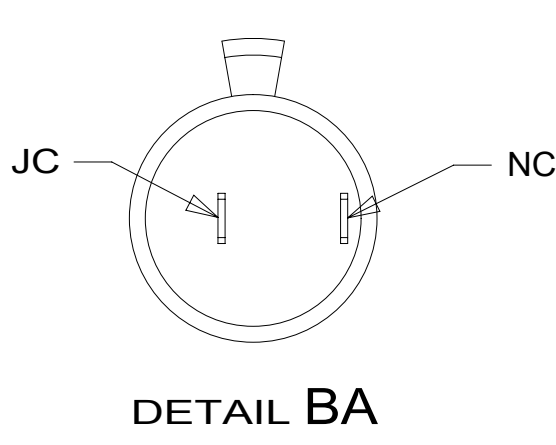
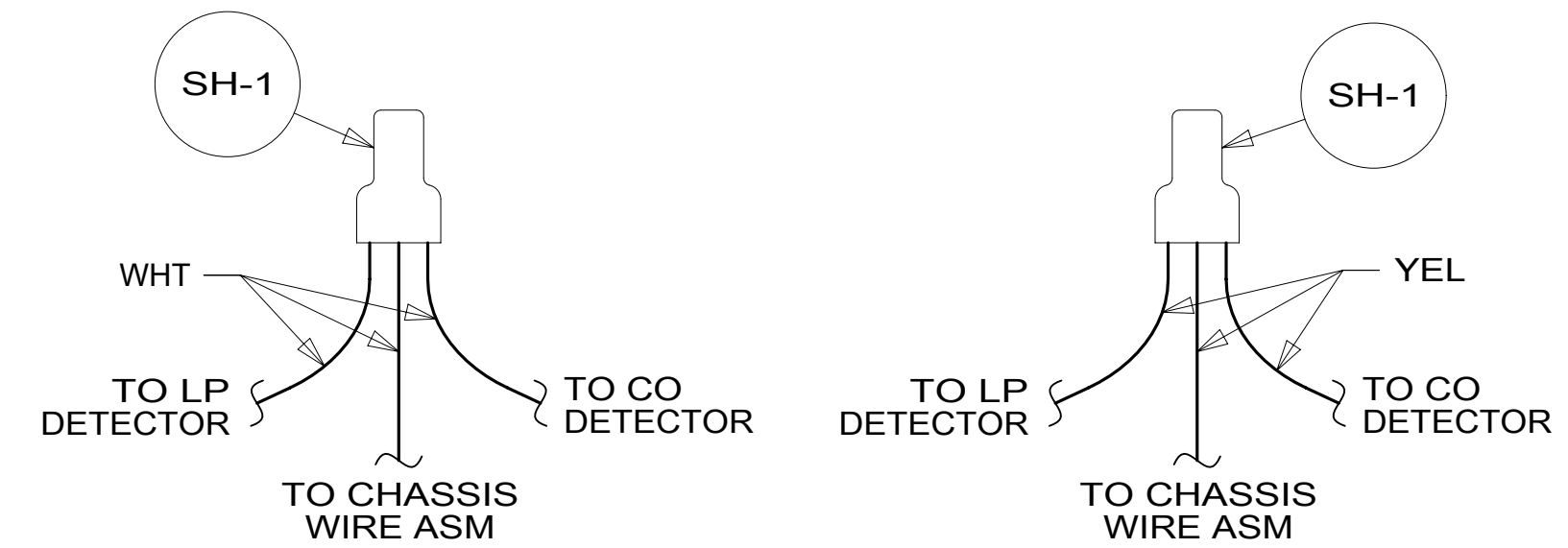
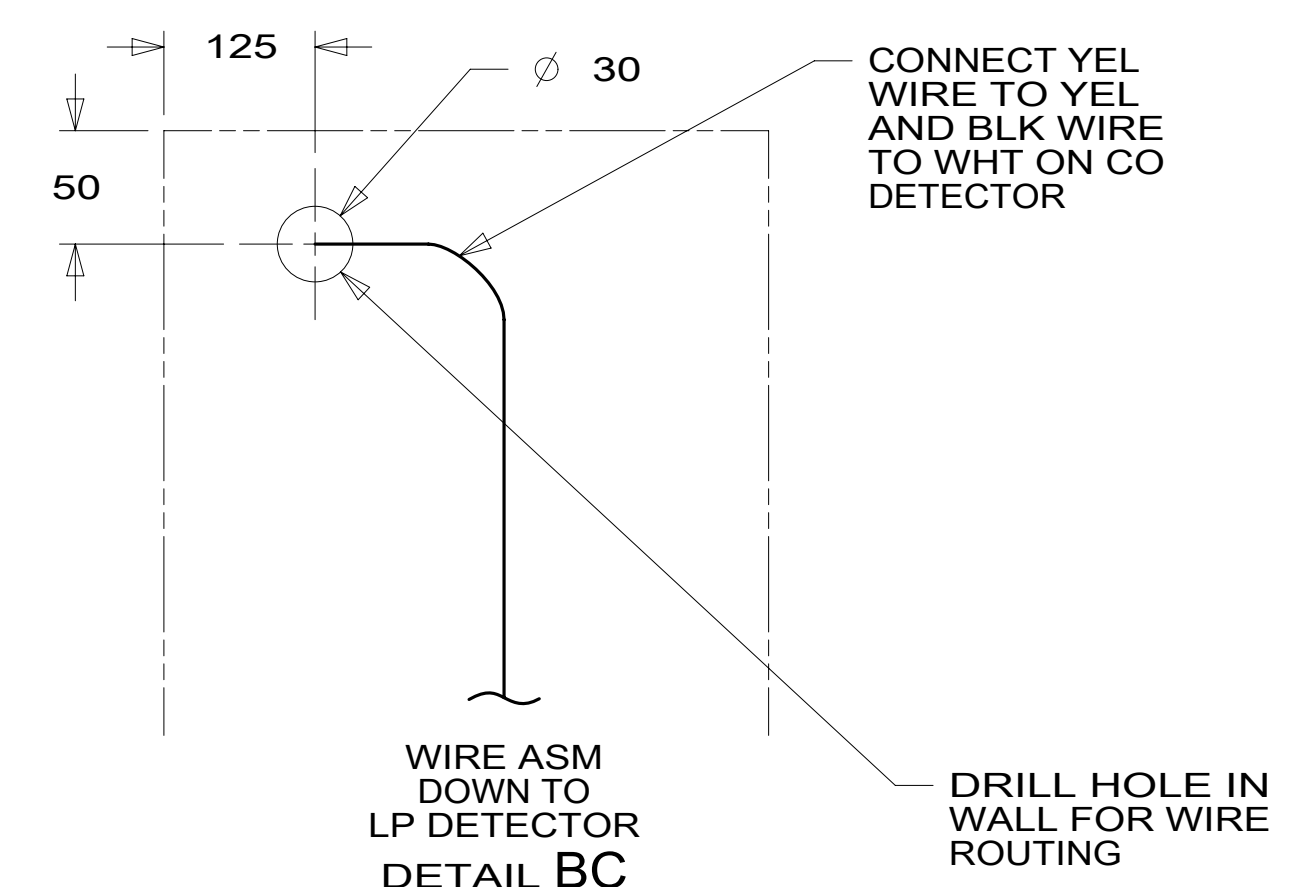
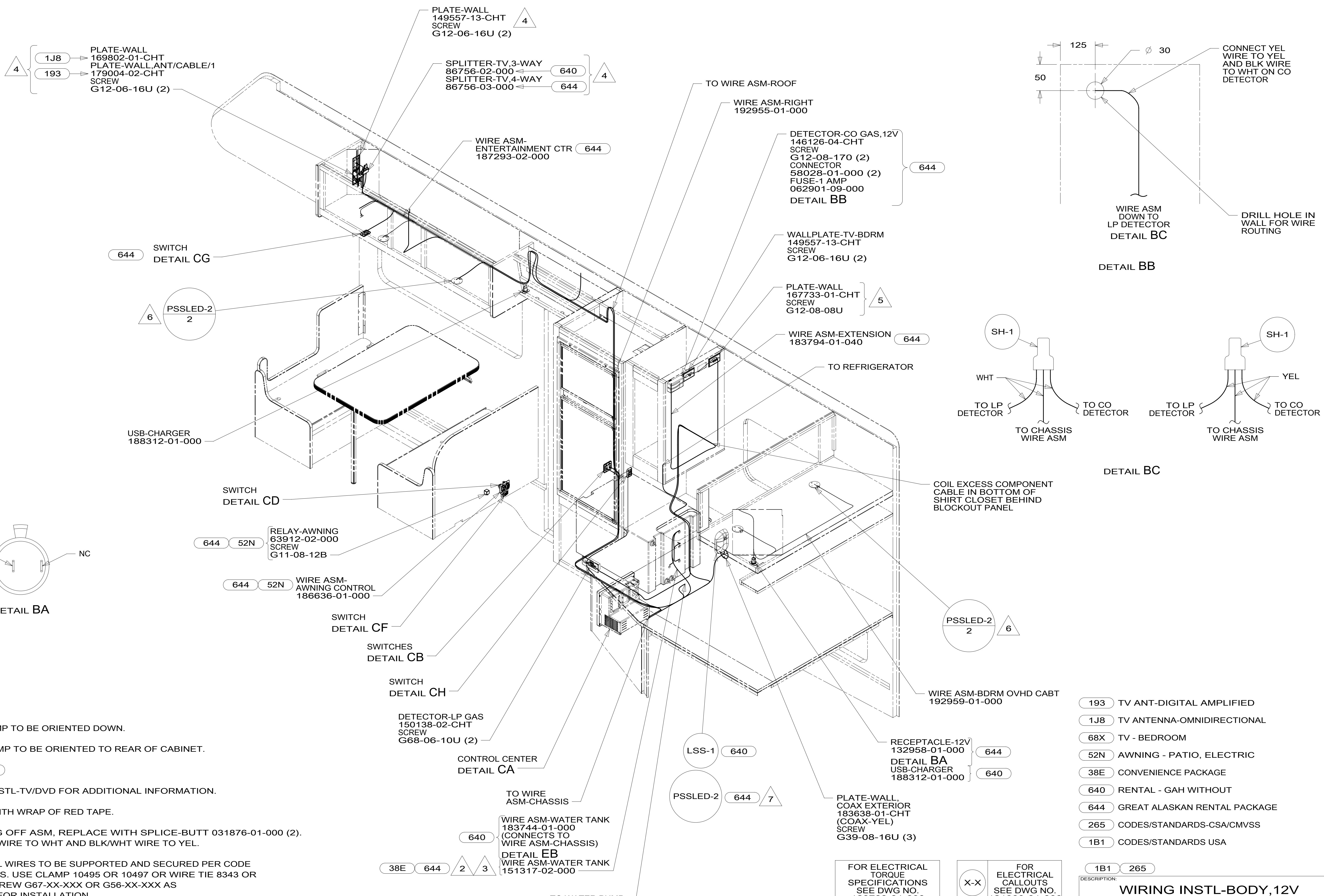
FOR ELECTRICAL TORQUE SPECIFICATIONS SEE DWG NO. 128783-01-000

FOR ELECTRICAL CALLOUTS SEE DWG NO. 121339-01-000

- 38E CONVENIENCE PACKAGE
- 640 RENTAL - GAH WITHOUT
- 644 GREAT ALASKAN RENTAL PACKAGE
- 23R DRAINAGE SYSTEM/HEAT-PREWIRE
- 23T DRAINAGE SYSTEM-HEATED
- 265 CODES/STANDARDS-CSA/CMVSS
- 1B1 CODES/STANDARDS USA

WINNEBAGO
COPYRIGHT 2016 WINNEBAGO INDUSTRIES, INC.

DSNR:	ALL DIMENSIONS ARE IN MILLIMETERS
DFFR:	
UNSPECIFIED TOLERANCES:	MATERIAL:
WHOLE DIM (X) : 3	
ONE-PLACE (X.X) : 1.5	
TWO-PLACE (X.XX) : 0.50	
ANGLE : 1°	
REFER TO ES0018 FOR FASTENER TIGHTENING GUIDELINES	WEIGHT: (LBS) FIRST USED: 16 325B
DESCRIPTION: WIRING INSTL-BODY, 12V	
SHEET: 1 OF 5	ITEM/PART NO: 000200778 / 30078901000
REF:	REV: 1 20-Sep-2016



- NOTES:**
- 7 SWITCH ON LAMP TO BE ORIENTED DOWN.
 - 6 SWITCH ON LAMP TO BE ORIENTED TO REAR OF CABINET.
 - 5 WITHOUT 68X
 - 4 SEE WIRING INSTL-TV/DVD FOR ADDITIONAL INFORMATION.
 - 3 MARK WIRES WITH WRAP OF RED TAPE.
 - 2 CUT 2 PIN HSG OFF ASM, REPLACE WITH SPLICE-BUTT 031876-01-000 (2). CONNECT BLK WIRE TO WHT AND BLK/WHT WIRE TO YEL.
 - 1. AT MINIMUM ALL WIRES TO BE SUPPORTED AND SECURED PER CODE REQUIREMENTS. USE CLAMP 10495 OR 10497 OR WIRE TIE 8343 OR 108046 AND SCREW G67-XX-XXX OR G56-XX-XXX AS APPROPRIATE FOR INSTALLATION.

- 193 TV ANT-DIGITAL AMPLIFIED
- 1J8 TV ANTENNA-OMNIDIRECTIONAL
- 68X TV - BEDROOM
- 52N AWNING - PATIO, ELECTRIC
- 38E CONVENIENCE PACKAGE
- 640 RENTAL - GAH WITHOUT
- 644 GREAT ALASKAN RENTAL PACKAGE
- 265 CODES/STANDARDS-CSA/CMVSS
- 1B1 CODES/STANDARDS USA

FOR ELECTRICAL TORQUE SPECIFICATIONS SEE DWG NO. 128783-01-000

FOR ELECTRICAL CALLOUTS SEE DWG NO. 121339-01-000

DESCRIPTION: WIRING INSTL-BODY, 12V	
SHEET: 2 OF 5	ITEM/PART NO: 000200778 / 30078901000
REV	

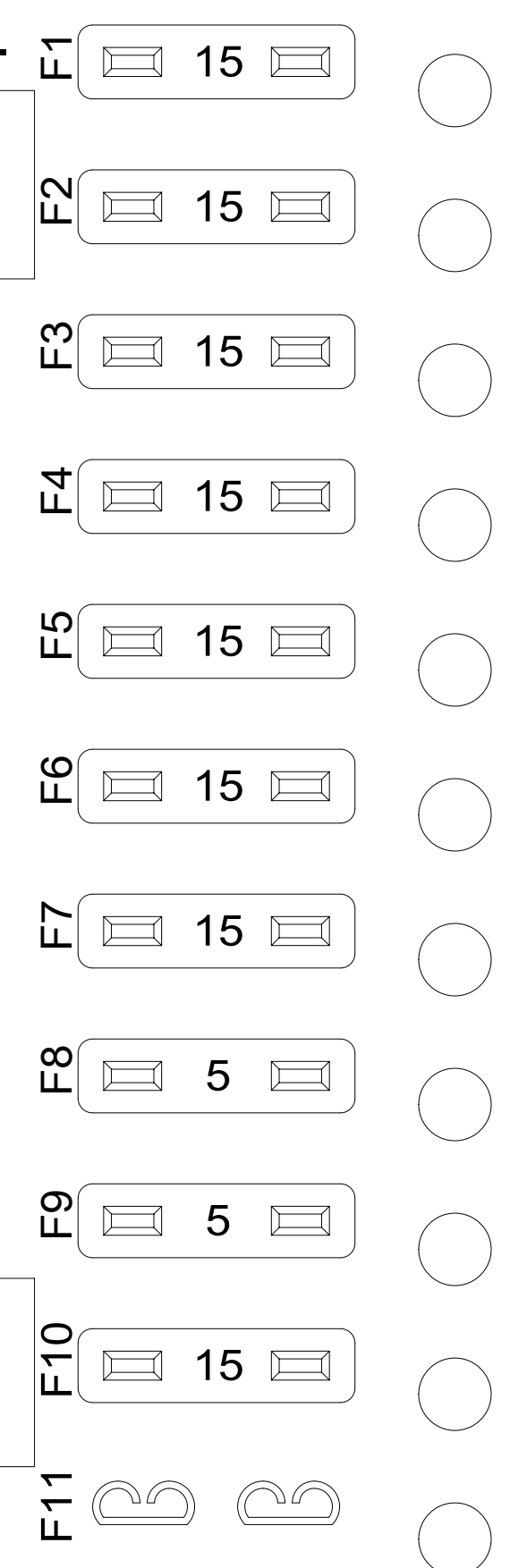
8 GRN (GROUND)

NEG-

+VCC

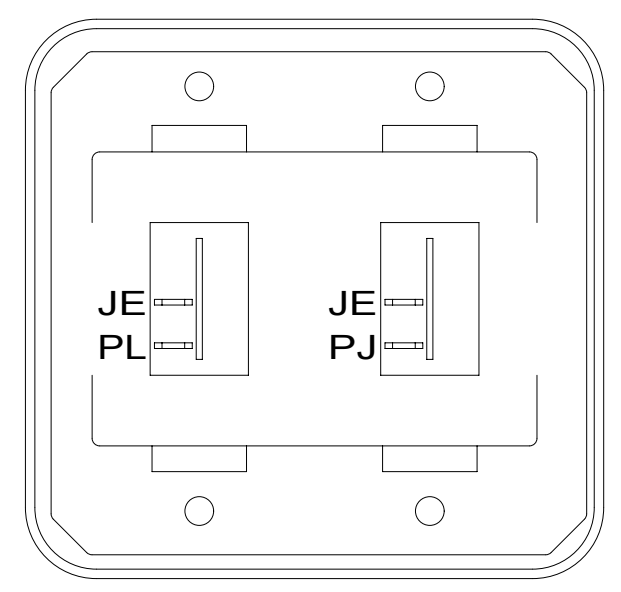
POS+

J BLK (BATTERY COMPT)



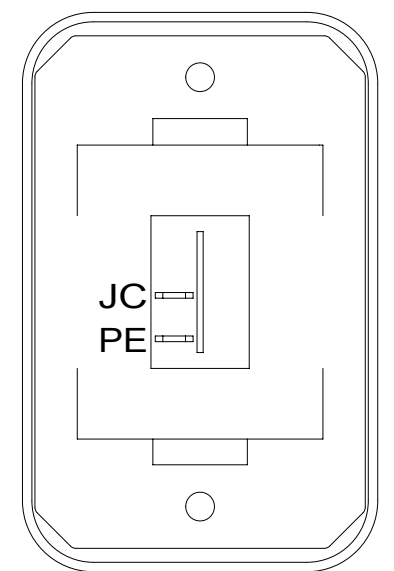
- JC 14 YEL (LAMPS)
- JD 14 YEL (LAMPS)
- JE 14 YEL (LAMPS)
- NM 14 YEL (23T) (HEATED TANKS)
- JA 12 YEL (MONITOR PANEL & PUMP) (ISOLATED CIRCUIT)
- JB 14 YEL (FURNACE)
- FFD 12 YEL (AWNING)
- WB 16 YEL (LP LEAK DETECTOR)
- ET 16 YEL (REFRIG)
- JF 14 YEL (TV/RADIO) (644)

DETAIL CA 1



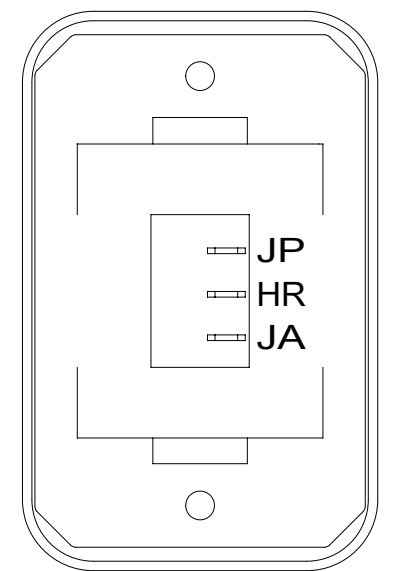
DETAIL CB

SWITCH-ROCKER
135740-01-CHT (2)
SWITCH-BASE
135741-02-CHT
SWITCH-BEZEL
135742-02-CHT
SCREW
G11-08-08U (4)



DETAIL CC

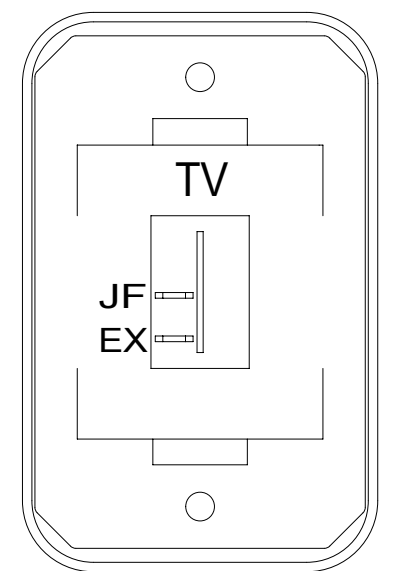
SWITCH-ROCKER
135740-01-CHT
SWITCH-BASE
135741-01-CHT
SWITCH-BEZEL
135742-01-CHT
SCREW
G11-08-08U (2)



HOLDING TANK HEATER
TURN OFF When Not In Use
SEE OPERATORS MANUAL

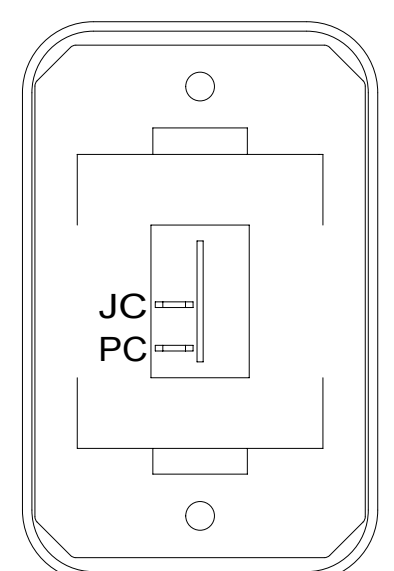
DETAIL CE 23T 23R

SWITCH-ROCKER
135740-06-CHT
SWITCH-BASE
135741-01-CHT
SWITCH-BEZEL
135742-01-CHT
SCREW
G11-08-08U (2)
LABEL-SWITCH
134563-01-CHT



DETAIL CG 644

SWITCH-ROCKER
135740-01-CHT
SWITCH-BASE
135741-01-CHT
SWITCH-BEZEL
135742-45-CHT
SCREW
G11-08-08U (2)

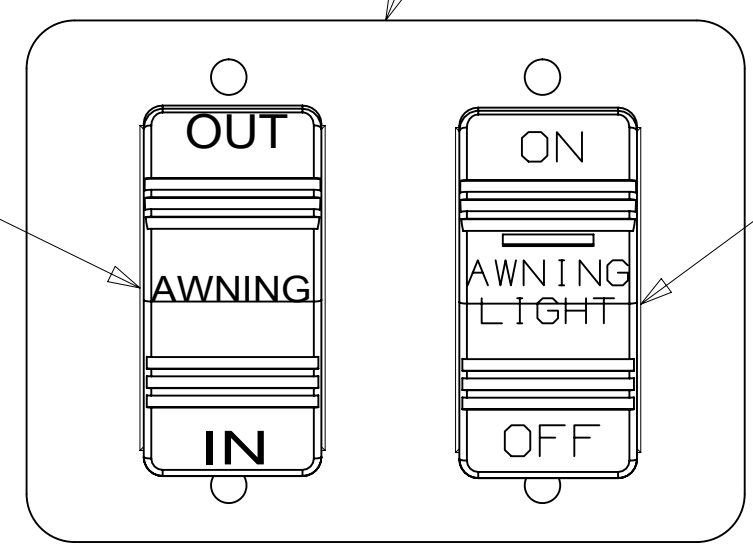


DETAIL CH

SWITCH-ROCKER
135740-01-CHT
SWITCH-BASE
135741-01-CHT
SWITCH-BEZEL
135742-01-CHT
SCREW
G11-08-08U (2)

644 52N
52F

SWITCH-ROCKER
108357-06-000
ACTUATOR-SWITCH
108356-12-CHT
SWITCH-BLANK
096241-03-000



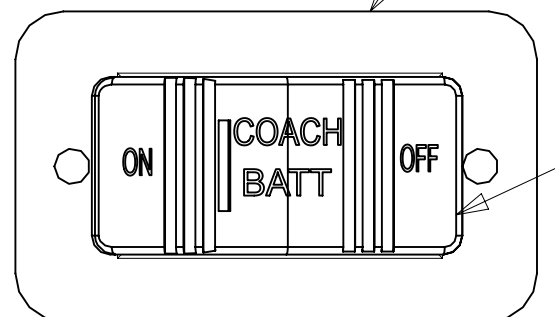
DETAIL CD

PLATE-SWITCH
098351-22-CHT
SCREW
G11-06-10U (4)

SWITCH-ROCKER
108357-14-000
ACTUATOR-SWITCH
108356-28-CHT
SWITCH-BLANK
096241-03-000

52N 644
52F

PLATE-SWITCH
098351-07-CHT
SCREW
G11-06-10U (4)



DETAIL CF

SWITCH-BATTERY
108357-18-000
ACTUATOR-SWITCH
108356-19-CHT
CIRCUITS LH,LJ,
LG,JP,JA
WIRE ASM-THERMISTOR
186796-01-000

- 52N AWNING - PATIO, ELECTRIC
- 52F AWNING-PATIO
- 644 GREAT ALASKAN RENTAL PACKAGE
- 23T DRAINAGE SYSTEM-HEATED
- 265 CODES/STANDARDS-CSA/CMVSS
- 1B1 CODES/STANDARDS USA

1B1 265

FOR ELECTRICAL
TORQUE
SPECIFICATIONS
SEE DWG NO.
128783-01-000

FOR ELECTRICAL
CALLOUTS
SEE DWG NO.
121339-01-000

1 FOR REFERENCE ONLY. SEE LOAD CENTER/ATS ASM FOR ADDITIONAL INFORMATION.

NOTES:

DESCRIPTION:
WIRING INSTL-BODY, 12V
SHEET: 3 OF 5 ITEM/PART NO: 000200778 / 30078901000 REV

8

7

6

5

4

3

2

1



D

D

C

C

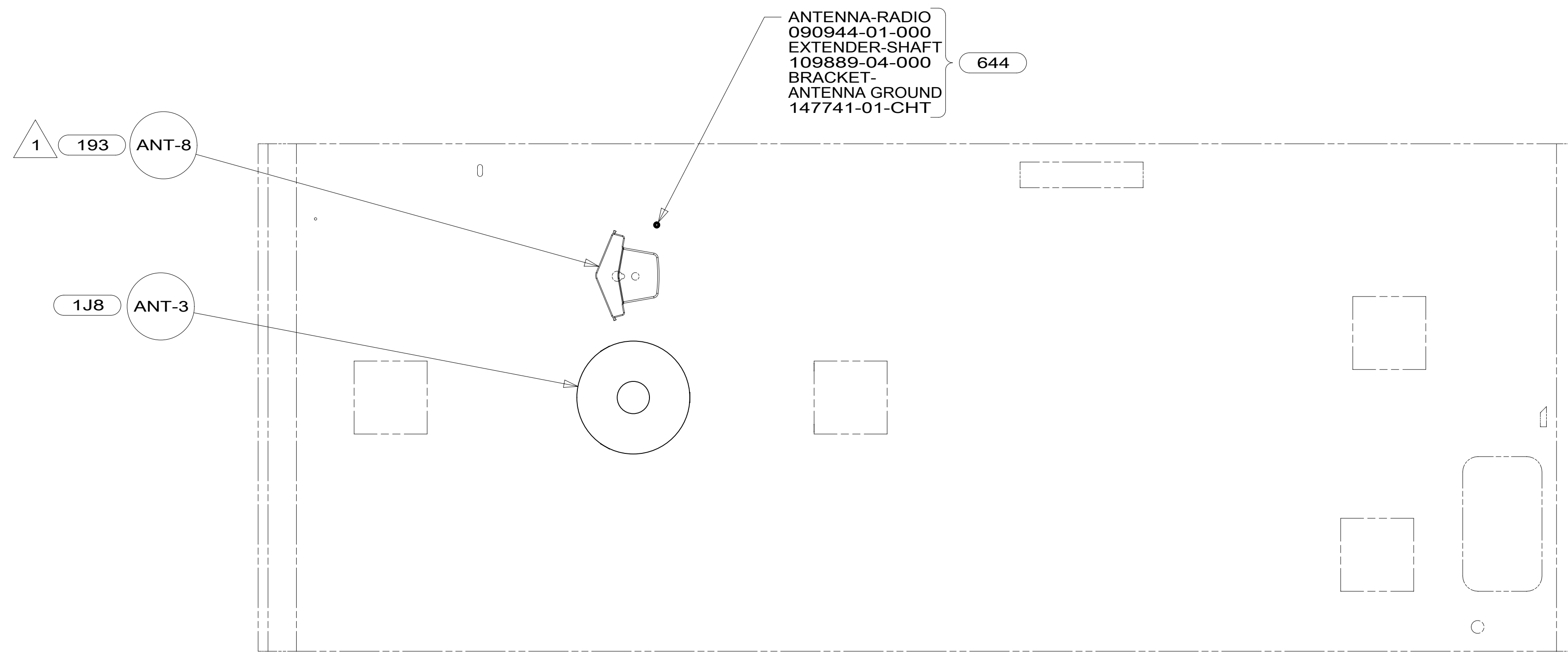
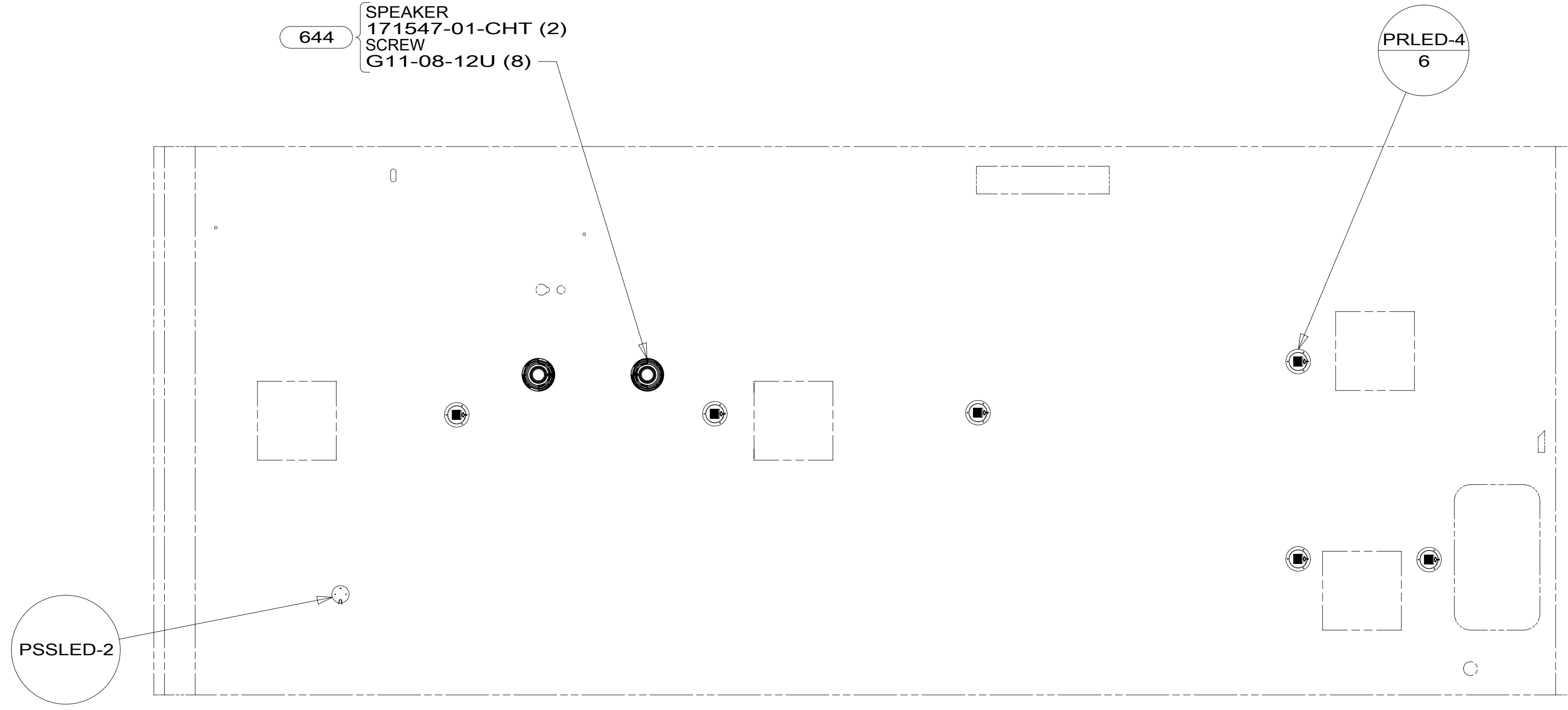


B

B

A

A



- 644 GREAT ALASKAN RENTAL PACKAGE
- 1J8 TV ANTENNA-OMNIDIRECTIONAL
- 193 TV ANTENNA-AMPLIFIED SYSTEM
- 265 CODES/STANDARDS-CSA/CMVSS
- 1B1 CODES/STANDARDS USA

1 SEE ANTENNA INSTALLATION MANUAL FOR
CORRECT INSTALLATION PROCEDURE.

FOR ELECTRICAL
TORQUE
SPECIFICATIONS
SEE DWG NO.
128783-01-000

FOR
ELECTRICAL
CALLOUTS
SEE DWG NO.
121339-01-000

1B1	265
DESCRIPTION: WIRING INSTL-BODY, 12V	
SHEET: 4 OF 5	ITEM/PART NO: 000200778 / 30078901000
REV	

NOTES:

8

7

6

5

4

3

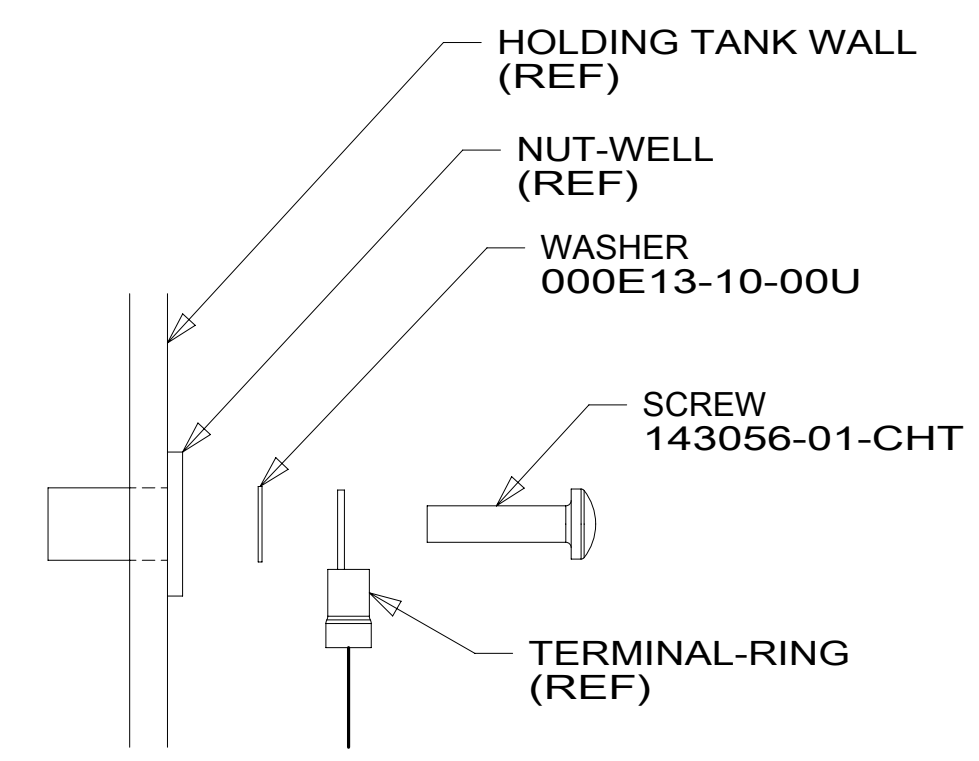
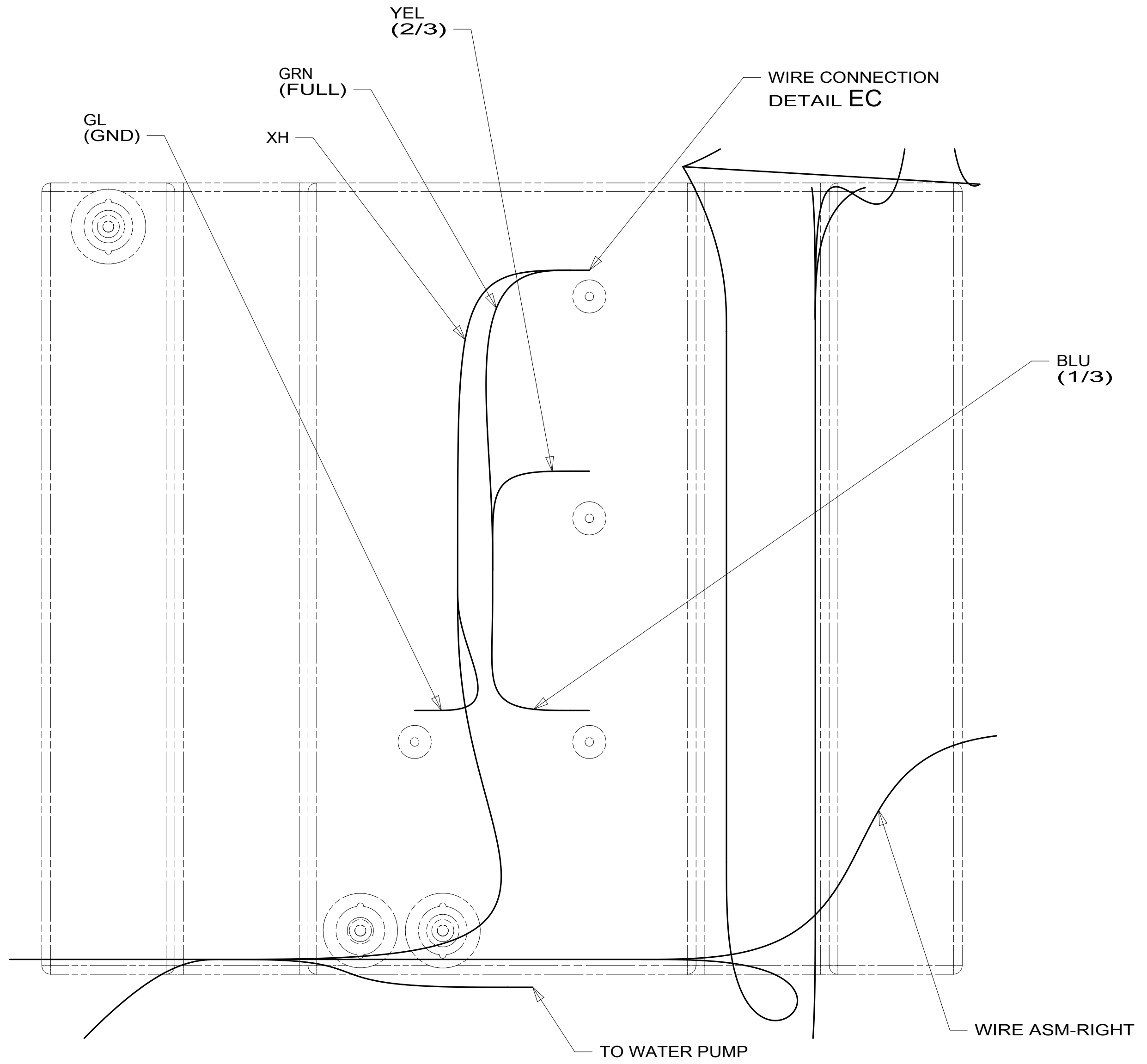
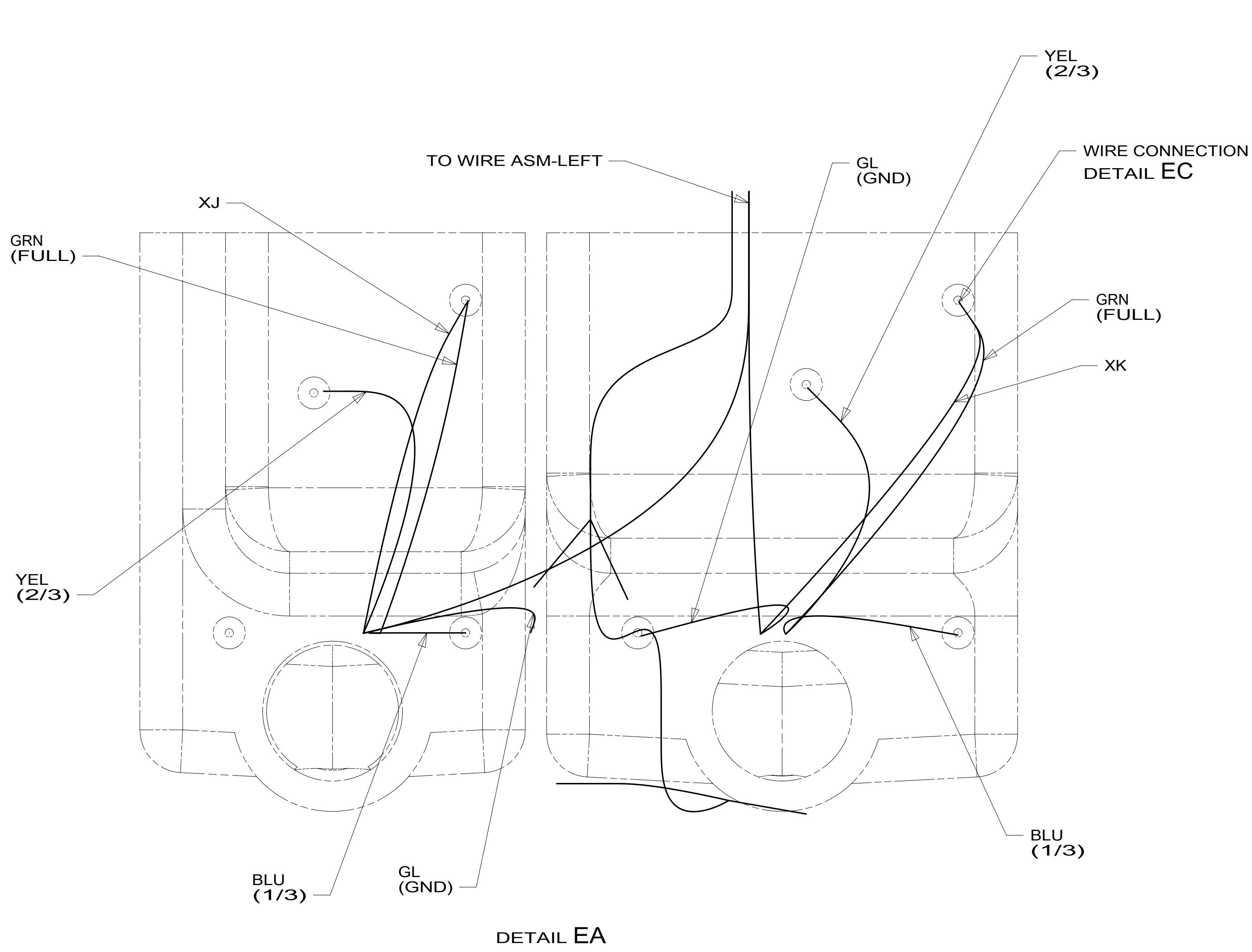
2

1



8 7 6 5 4 3 2 1

D
C
B
A



1 TYPICAL WIRE ATTACHMENT AT ALL LEVEL PROBES (4 EACH) FOR WATER, MAIN, AND AUX HOLDING TANKS.

NOTES:

FOR ELECTRICAL TORQUE SPECIFICATIONS SEE DWG NO. 128783-01-000

FOR ELECTRICAL CALLOUTS SEE DWG NO. 121339-01-000

265 CODES/STANDARDS-CSA/CMVSS
1B1 CODES/STANDARDS USA

DESCRIPTION:	
1B1 265	
WIRING INSTL-BODY, 12V	
SHEET:	ITEM/PART NO.:
5 OF 5	000200778 / 30078901000
REV	

8 7 6 5 4 3 2 1 20-Sep-2016